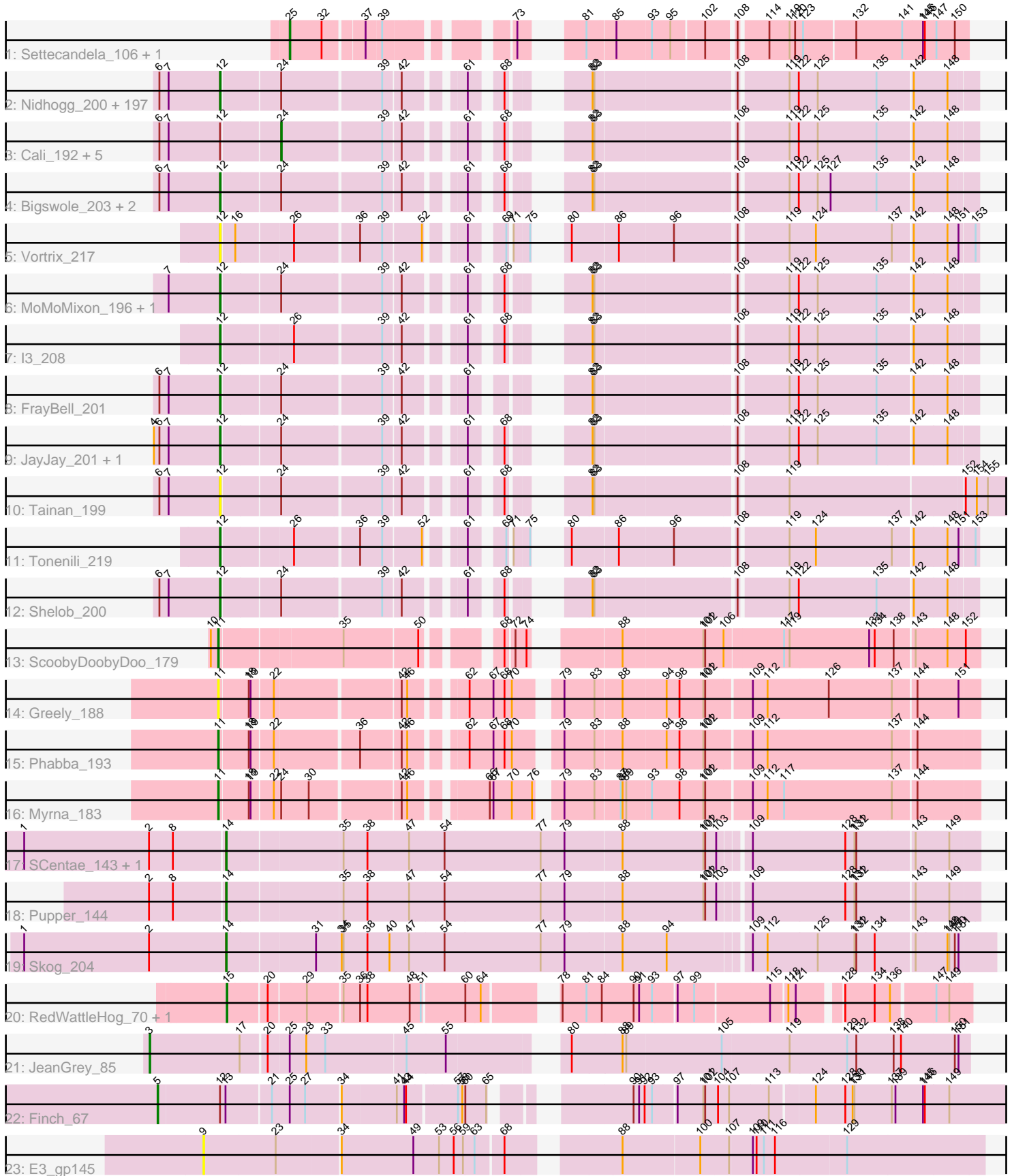


Pham 308034



Note: Tracks are now grouped by subcluster and scaled. Switching in subcluster is indicated by changes in track color. Track scale is now set by default to display the region 30 bp upstream of start 1 to 30 bp downstream of the last possible start. If this default region is judged to be packed too tightly with annotated starts, the track will be further scaled to only show that region of the ORF with annotated starts. This action will be indicated by adding "Zoomed" to the title. For starts, yellow indicates the location of called starts comprised solely of Glimmer/GeneMark auto-annotations, green indicates the location of called starts with at least 1 manual gene annotation.

Pham 308034 Report

This analysis was run 06/27/26 on database version 652.

Pham number 308034 has 232 members, 39 are drafts.

Phages represented in each track:

- Track 1 : Settecandela_106, Phrappuccino_106
- Track 2 : Nidhogg_200, NoodleTree_205, Cane17_190, LifeSavor_197, NuevoMundo_201, Derek_195, Adlitam_197, BigCity_207, Jessibeth14_199, SmallFry_198, Littleton_201, Pupusa_202, Spec_193, JulietS_189, Grasshills_206, Rabinovish_192, LolaVinca_196, Teardrop_195, Astraea_192, OrediggerDelux_195, Gizmo_204, Guwapp_193, Chomp_198, PharkleMinkus_200, RoMag_193, JPickles_194, Rahel_199, Burrough_200, Willis_199, Amataga_199, Pio_206, Darko_197, Bezza_187, SilverDipper_202, Shrimp_200, YemiJoy2021_199, Napoleon13_196, Yassified_195, ZygoTaiga_195, SoilZilla_194, Audrick_201, ChaylaJr_196, Erdmann_200, ChickenPhender_195, Breeniome_197, Concombre_203, Dietrick_188, MikeLiesIn_200, NedWong_198, Naval22_206, Domi_192, BadAgartude_192, Moby_195, Basquiat_196, Janiyra_202, Patter_199, LookingGlass_197, EmToTheThree_199, Phlegm_202, Sauce_194, HyRo_186, Capablanca_203, Naija_199, Ngannou_195, Bread_194, SVoro_194, InterFolia_201, Khaleesi_198, McGee_198, Bipolarisk_197, Cleatunium_192, Melpomini_193, Jezreel_196, ArcherS7_198, Delilah_197, BeanWater_190, JustHall_193, Lethe_199, Babyland_201, Issimir_192, CharlieB_192, Belieber_192, Asterius_200, Norm_198, Ava3_197, Blackdragon_193, McWolfish_196, Maturis_196, EasyJones_202, Megamind_196, BobaPhatt_191, ErnieJ_191, Turret_192, Phusco_197, Phox_199, EmmaElysia_201, Koguma_197, Delylah_200, IkeLoa_190, Substance289_195, Kamryn_197, Daffodil_203, EggyFarm_207, Pinkcreek_183, ShiaLabeouf_195, CindyLou_199, Halldule_191, Izajani_197, Sprinklers_196, Zalkecks_198, Gabriel_201, Quasimodo_201, StubbySaigey_203, Salacia_198, Wally_197, Demodog_204, Iota_193, Yucca_199, Chargie21_196, Stubby_183, Mikro_194, BananaFence_195, Bangla1971_198, InigoMontoya_201, Bowman_196, DeejaClivia_187, Lukilu_189, BackyardAgain_195, Maby2021_198, Tyke_196, YoungMoneyMata_197, DrPhinkDaddy_196, Cactojaque_194, Fixie_198, Matsumoto_197, FudgeTart_194, Lunareta_197, Pleione_203, Dandelion_206, Momo_199, LRRHood_191, PurduePete_199, TinyTim_197, Labradorite_196, FoxtrotP1_197, StephanieG_195, Flabslab_194, ScottMcG_192, Fludd_199, Rocha_196, Shaqnato_190, Gamgam_199, ValleyTerrace_199, Jemmno_197, Moiqah_194, Trinitium_195, JigglyPuff_205, ET08_186, Grungle_183, Fongie_199, Drazdys_196, QBert_190, Pier_199, Colt_190, Specks_202, Shnickers_196, Atlantean_198, GlutenPhree_199, Dessert_196, LordLeafolot_199, Tortoise16_196, Ading_199, Ewok_198, Pivoine_199, DTDevon_200, Duckfeet_192, Roots515_201, Blubba_188, Morizzled23_196, Kboogie_202, Ablatia_198, LinStu_197, Blackbrain_196, Jaygup_194, Nappy_199, Lee7_199, Ronan_194, Latch_198,

Sebata_200, Montpel_197, Zeenon_201, Essence_195, Ghost_198, Bonray_201, ParkTD_197, SrishMeg2525_196, Loanshark_196, Jedediah_198

- Track 3 : Cali_192, Spud_193, Rizal_191, Bxz1_188, Alice_185, Catera_192
- Track 4 : Bigswole_203, Mangeria_199, Primadonna_193
- Track 5 : Vortrix_217
- Track 6 : MoMoMixon_196, Caravan_189
- Track 7 : I3_208
- Track 8 : FrayBell_201
- Track 9 : JayJay_201, DirtMonster_192
- Track 10 : Tainan_199
- Track 11 : Tonenili_219
- Track 12 : Shelob_200
- Track 13 : ScoobyDoobyDoo_179
- Track 14 : Greely_188
- Track 15 : Phabba_193
- Track 16 : Myrna_183
- Track 17 : SCentae_143, CherryTomatoes_145
- Track 18 : Pupper_144
- Track 19 : Skog_204
- Track 20 : RedWattleHog_70, Stormageddon_67
- Track 21 : JeanGrey_85
- Track 22 : Finch_67
- Track 23 : E3_gp145

Summary of Final Annotations (See graph section above for start numbers):

The start number called the most often in the published annotations is 12, it was called in 174 of the 193 non-draft genes in the pham.

Genes that call this "Most Annotated" start:

- Ablatia_198, Ading_199, Adlitam_197, Amataga_199, ArcherS7_198, Asterius_200, Astraea_192, Atlantean_198, Audrick_201, Ava3_197, Babyland_201, BackyardAgain_195, BadAgartude_192, BananaFence_195, Bangla1971_198, Basquiat_196, BeanWater_190, Belieber_192, Bezza_187, BigCity_207, Bigswole_203, Bipolarisk_197, Blackbrain_196, Blackdragon_193, Blubba_188, BobaPhatt_191, Bonray_201, Bowman_196, Bread_194, Breeniome_197, Burrough_200, Cactojaque_194, Cane17_190, Capablanca_203, Caravan_189, Chargie21_196, CharlieB_192, ChaylaJr_196, ChickenPhender_195, Chomp_198, CindyLou_199, Cleatunium_192, Colt_190, Concombre_203, DTDevon_200, Daffodil_203, Dandelion_206, Darko_197, DeejaClivia_187, Delilah_197, Delylah_200, Demodog_204, Derek_195, Dessert_196, Dietrick_188, DirtMonster_192, Domi_192, DrPhinkDaddy_196, Drazdys_196, Duckfeet_192, ET08_186, EasyJones_202, EggyFarm_207, EmToTheThree_199, EmmaElysia_201, Erdmann_200, ErnieJ_191, Essence_195, Ewok_198, Fixie_198, Flabslab_194, Fludd_199, Fongie_199, FoxtrotP1_197, FrayBell_201, FudgeTart_194, Gabriel_201, Gamgam_199, Ghost_198, Gizmo_204, GlutenPhree_199, Grasshills_206, Grungle_183, Guwapp_193, Halldule_191, HyRo_186, I3_208, IkeLoa_190, InigoMontoya_201, InterFolia_201, Iota_193, Issimir_192, Izajani_197, JPickles_194, Janiyra_202, JayJay_201, Jaygup_194, Jedediah_198, Jemmno_197, Jessibeth14_199, Jezreel_196, JigglyPuff_205,

JulietS_189, JustHall_193, Kamryn_197, Kboogie_202, Khaleesi_198, Koguma_197, LRRHood_191, Labradorite_196, Latch_198, Lee7_199, Lethe_199, LifeSavor_197, LinStu_197, Littleton_201, Loanshark_196, LolaVinca_196, LookingGlass_197, LordLeafolot_199, Lukilu_189, Lunareta_197, Maby2021_198, Mangeria_199, Matsumoto_197, Maturis_196, McGee_198, McWolfish_196, Megamind_196, Melpomini_193, MikeLiesIn_200, Mikro_194, MoMoMixon_196, Moby_195, Moiqah_194, Momo_199, Montpel_197, Morizzled23_196, Naija_199, Napoleon13_196, Nappy_199, Naval22_206, NedWong_198, Ngannou_195, Nidhogg_200, NoodleTree_205, Norm_198, NuevoMundo_201, OrediggerDelux_195, ParkTD_197, Patter_199, PharkleMinkus_200, Phlegm_202, Phox_199, Phusco_197, Pier_199, Pinkcreek_183, Pio_206, Pivoine_199, Pleione_203, Primadonna_193, Pupusa_202, PurduePete_199, QBert_190, Quasimodo_201, Rabinovish_192, Rahel_199, RoMag_193, Rocha_196, Ronan_194, Roots515_201, SVoro_194, Salacia_198, Sauce_194, ScottMcG_192, Sebata_200, Shaqnato_190, Shelob_200, ShiaLabeouf_195, Shnickers_196, Shrimp_200, SilverDipper_202, SmallFry_198, SoilZilla_194, Spec_193, Specks_202, Sprinklers_196, SrishMeg2525_196, StephanieG_195, StubbySaigey_203, Stubby_183, Substance289_195, Tainan_199, Teardrop_195, TinyTim_197, Tonenili_219, Tortoise16_196, Trinitium_195, Turret_192, Tyke_196, ValleyTerrace_199, Vortrix_217, Wally_197, Willis_199, Yassified_195, YemiJoy2021_199, YoungMoneyMata_197, Yucca_199, Zalkecks_198, Zeenon_201, ZygoTaiga_195,

Genes that have the "Most Annotated" start but do not call it:

- Alice_185, Bxz1_188, Cali_192, Catera_192, Finch_67, Rizal_191, Spud_193,

Genes that do not have the "Most Annotated" start:

- CherryTomatoes_145, E3_gp145, Greely_188, JeanGrey_85, Myrna_183, Phabba_193, Phrappuccino_106, Pupper_144, RedWattleHog_70, SCentae_143, ScoobyDoobyDoo_179, Settecandela_106, Skog_204, Stormageddon_67,

Summary by start number:

Start 3:

- Found in 1 of 232 (0.4%) of genes in pham
- Manual Annotations of this start: 1 of 193
- Called 100.0% of time when present
- Phage (with cluster) where this start called: JeanGrey_85 (singleton),

Start 5:

- Found in 1 of 232 (0.4%) of genes in pham
- Manual Annotations of this start: 1 of 193
- Called 100.0% of time when present
- Phage (with cluster) where this start called: Finch_67 (singleton),

Start 9:

- Found in 1 of 232 (0.4%) of genes in pham
- No Manual Annotations of this start.
- Called 100.0% of time when present
- Phage (with cluster) where this start called: E3_gp145 (singleton),

Start 11:

- Found in 4 of 232 (1.7%) of genes in pham
- Manual Annotations of this start: 3 of 193

- Called 100.0% of time when present
- Phage (with cluster) where this start called: Greely_188 (C2), Myrna_183 (C2), Phabba_193 (C2), ScoobyDoobyDoo_179 (C2),

Start 12:

- Found in 218 of 232 (94.0%) of genes in pham
- Manual Annotations of this start: 174 of 193
- Called 96.8% of time when present
- Phage (with cluster) where this start called: Ablatia_198 (C1), Ading_199 (C1), Adlitam_197 (C1), Amataga_199 (C1), ArcherS7_198 (C1), Asterius_200 (C1), Astraea_192 (C1), Atlantean_198 (C1), Audrick_201 (C1), Ava3_197 (C1), Babyland_201 (C1), BackyardAgain_195 (C1), BadAgartude_192 (C1), BananaFence_195 (C1), Bangla1971_198 (C1), Basquiat_196 (C1), BeanWater_190 (C1), Belieber_192 (C1), Bezza_187 (C1), BigCity_207 (C1), Bigswole_203 (C1), Bipolarisk_197 (C1), Blackbrain_196 (C1), Blackdragon_193 (C1), Blubba_188 (C1), BobaPhatt_191 (C1), Bonray_201 (C1), Bowman_196 (C1), Bread_194 (C1), Breeniome_197 (C1), Burrough_200 (C1), Cactojaque_194 (C1), Cane17_190 (C1), Capablanca_203 (C1), Caravan_189 (C1), Chargie21_196 (C1), CharlieB_192 (C1), ChaylaJr_196 (C1), ChickenPhender_195 (C1), Chomp_198 (C1), CindyLou_199 (C1), Cleatunium_192 (C1), Colt_190 (C1), Concombre_203 (C1), DTDevon_200 (C1), Daffodil_203 (C1), Dandelion_206 (C1), Darko_197 (C1), DeejaClivia_187 (C1), Delilah_197 (C1), Delylah_200 (C1), Demodog_204 (C1), Derek_195 (C1), Dessert_196 (C1), Dietrick_188 (C1), DirtMonster_192 (C1), Domi_192 (C1), DrPhinkDaddy_196 (C1), Drazdys_196 (C1), Duckfeet_192 (C1), ET08_186 (C1), EasyJones_202 (C1), EggyFarm_207 (C1), EmToTheThree_199 (C1), EmmaElysia_201 (C1), Erdmann_200 (C1), ErnieJ_191 (C1), Essence_195 (C1), Ewok_198 (C1), Fixie_198 (C1), Flabslab_194 (C1), Fludd_199 (C1), Fongie_199 (C1), FoxtrotP1_197 (C1), FrayBell_201 (C1), FudgeTart_194 (C1), Gabriel_201 (C1), Gamgam_199 (C1), Ghost_198 (C1), Gizmo_204 (C1), GlutenPhree_199 (C1), Grasshills_206 (C1), Grungle_183 (C1), Guwapp_193 (C1), Halldule_191 (C1), HyRo_186 (C1), I3_208 (C1), IkeLoa_190 (C1), InigoMontoya_201 (C1), InterFolia_201 (C1), Iota_193 (C1), Issimir_192 (C1), Izajani_197 (C1), JPickles_194 (C1), Janiyr_202 (C1), JayJay_201 (C1), Jaygup_194 (C1), Jedediah_198 (C1), Jemmno_197 (C1), Jessibeth14_199 (C1), Jezreel_196 (C1), JigglyPuff_205 (C1), JulietS_189 (C1), JustHall_193 (C1), Kamryn_197 (C1), Kboogie_202 (C1), Khaleesi_198 (C1), Koguma_197 (C1), LRRHood_191 (C1), Labradorite_196 (C1), Latch_198 (C1), Lee7_199 (C1), Lethe_199 (C1), LifeSavor_197 (C1), LinStu_197 (C1), Littleton_201 (C1), Loanshark_196 (C1), LolaVinca_196 (C1), LookingGlass_197 (C1), LordLeafolot_199 (C1), Lukilu_189 (C1), Lunareta_197 (C1), Maby2021_198 (C1), Mangeria_199 (C1), Matsumoto_197 (C1), Maturis_196 (C1), McGee_198 (C1), McWolfish_196 (C1), Megamind_196 (C1), Melpomini_193 (C1), MikeLiesIn_200 (C1), Mikro_194 (C1), MoMoMixon_196 (C1), Moby_195 (C1), Moiqah_194 (C1), Momo_199 (C1), Montpel_197 (C1), Morizzled23_196 (C1), Naija_199 (C1), Napoleon13_196 (C1), Nappy_199 (C1), Naval22_206 (C1), NedWong_198 (C1), Ngannou_195 (C1), Nidhogg_200 (C1), NoodleTree_205 (C1), Norm_198 (C1), NuevoMundo_201 (C1), OrediggerDelux_195 (C1), ParkTD_197 (C1), Patter_199 (C1), PharkleMinkus_200 (C1), Phlegm_202 (C1), Phox_199 (C1), Phusco_197 (C1), Pier_199 (C1), Pinkcreek_183 (C1), Pio_206 (C1), Pivoine_199 (C1), Pleione_203 (C1), Primadonna_193 (C1), Pupusa_202 (C1), PurduePete_199 (C1), QBert_190 (C1), Quasimodo_201 (C1), Rabinovish_192 (C1), Rahel_199 (C1), RoMag_193 (C1), Rocha_196 (C1), Ronan_194 (C1), Roots515_201 (C1), SVoro_194 (C1), Salacia_198 (C1), Sauce_194 (C1), ScottMcG_192 (C1), Sebata_200 (C1), Shaqnato_190 (C1), Shelob_200 (C1), ShiaLabeouf_195 (C1),

Shnickers_196 (C1), Shrimp_200 (C1), SilverDipper_202 (C1), SmallFry_198 (C1), SoilZilla_194 (C1), Spec_193 (C1), Specks_202 (C1), Sprinklers_196 (C1), SrishMeg2525_196 (C1), StephanieG_195 (C1), StubbySaigey_203 (C1), Stubby_183 (C1), Substance289_195 (C1), Tainan_199 (C1), Teardrop_195 (C1), TinyTim_197 (C1), Tonenili_219 (C1), Tortoise16_196 (C1), Trinitium_195 (C1), Turret_192 (C1), Tyke_196 (C1), ValleyTerrace_199 (C1), Vortrix_217 (C1), Wally_197 (C1), Willis_199 (C1), Yassified_195 (C1), YemiJoy2021_199 (C1), YoungMoneyMata_197 (C1), Yucca_199 (C1), Zalkecks_198 (C1), Zeenon_201 (C1), ZygoTaiga_195 (C1),

Start 14:

- Found in 4 of 232 (1.7%) of genes in pham
- Manual Annotations of this start: 4 of 193
- Called 100.0% of time when present
- Phage (with cluster) where this start called: CherryTomatoes_145 (DO), Pupper_144 (DO), SCentae_143 (DO), Skog_204 (DO),

Start 15:

- Found in 2 of 232 (0.9%) of genes in pham
- Manual Annotations of this start: 2 of 193
- Called 100.0% of time when present
- Phage (with cluster) where this start called: RedWattleHog_70 (DX), Stormageddon_67 (DX),

Start 24:

- Found in 215 of 232 (92.7%) of genes in pham
- Manual Annotations of this start: 6 of 193
- Called 2.8% of time when present
- Phage (with cluster) where this start called: Alice_185 (C1), Bxz1_188 (C1), Cali_192 (C1), Catera_192 (C1), Rizal_191 (C1), Spud_193 (C1),

Start 25:

- Found in 4 of 232 (1.7%) of genes in pham
- Manual Annotations of this start: 2 of 193
- Called 50.0% of time when present
- Phage (with cluster) where this start called: Phrappuccino_106 (AA), Settecandela_106 (AA),

Summary by clusters:

There are 6 clusters represented in this pham: AA, DO, singleton, DX, C2, C1,

Info for manual annotations of cluster AA:

- Start number 25 was manually annotated 2 times for cluster AA.

Info for manual annotations of cluster C1:

- Start number 12 was manually annotated 174 times for cluster C1.
- Start number 24 was manually annotated 6 times for cluster C1.

Info for manual annotations of cluster C2:

- Start number 11 was manually annotated 3 times for cluster C2.

Info for manual annotations of cluster DO:

- Start number 14 was manually annotated 4 times for cluster DO.

Info for manual annotations of cluster DX:

- Start number 15 was manually annotated 2 times for cluster DX.

Gene Information:

Gene: Ablatia_198 Start: 105737, Stop: 106780, Start Num: 12

Candidate Starts for Ablatia_198:

(6, 105638), (7, 105653), (Start: 12 @105737 has 174 MA's), (Start: 24 @105824 has 6 MA's), (39, 105980), (42, 106007), (61, 106082), (68, 106118), (82, 106193), (83, 106196), (108, 106412), (119, 106487), (122, 106502), (125, 106532), (135, 106628), (142, 106682), (148, 106736),

Gene: Ading_199 Start: 106055, Stop: 107098, Start Num: 12

Candidate Starts for Ading_199:

(6, 105956), (7, 105971), (Start: 12 @106055 has 174 MA's), (Start: 24 @106142 has 6 MA's), (39, 106298), (42, 106325), (61, 106400), (68, 106436), (82, 106511), (83, 106514), (108, 106730), (119, 106805), (122, 106820), (125, 106850), (135, 106946), (142, 107000), (148, 107054),

Gene: Adlitam_197 Start: 104659, Stop: 105702, Start Num: 12

Candidate Starts for Adlitam_197:

(6, 104560), (7, 104575), (Start: 12 @104659 has 174 MA's), (Start: 24 @104746 has 6 MA's), (39, 104902), (42, 104929), (61, 105004), (68, 105040), (82, 105115), (83, 105118), (108, 105334), (119, 105409), (122, 105424), (125, 105454), (135, 105550), (142, 105604), (148, 105658),

Gene: Alice_185 Start: 104714, Stop: 105670, Start Num: 24

Candidate Starts for Alice_185:

(6, 104528), (7, 104543), (Start: 12 @104627 has 174 MA's), (Start: 24 @104714 has 6 MA's), (39, 104870), (42, 104897), (61, 104972), (68, 105008), (82, 105083), (83, 105086), (108, 105302), (119, 105377), (122, 105392), (125, 105422), (135, 105518), (142, 105572), (148, 105626),

Gene: Amataga_199 Start: 104471, Stop: 105514, Start Num: 12

Candidate Starts for Amataga_199:

(6, 104372), (7, 104387), (Start: 12 @104471 has 174 MA's), (Start: 24 @104558 has 6 MA's), (39, 104714), (42, 104741), (61, 104816), (68, 104852), (82, 104927), (83, 104930), (108, 105146), (119, 105221), (122, 105236), (125, 105266), (135, 105362), (142, 105416), (148, 105470),

Gene: ArcherS7_198 Start: 105513, Stop: 106556, Start Num: 12

Candidate Starts for ArcherS7_198:

(6, 105414), (7, 105429), (Start: 12 @105513 has 174 MA's), (Start: 24 @105600 has 6 MA's), (39, 105756), (42, 105783), (61, 105858), (68, 105894), (82, 105969), (83, 105972), (108, 106188), (119, 106263), (122, 106278), (125, 106308), (135, 106404), (142, 106458), (148, 106512),

Gene: Asterius_200 Start: 105189, Stop: 106232, Start Num: 12

Candidate Starts for Asterius_200:

(6, 105090), (7, 105105), (Start: 12 @105189 has 174 MA's), (Start: 24 @105276 has 6 MA's), (39, 105432), (42, 105459), (61, 105534), (68, 105570), (82, 105645), (83, 105648), (108, 105864), (119, 105939), (122, 105954), (125, 105984), (135, 106080), (142, 106134), (148, 106188),

Gene: Astraea_192 Start: 104077, Stop: 105120, Start Num: 12

Candidate Starts for Astraea_192:

(6, 103978), (7, 103993), (Start: 12 @104077 has 174 MA's), (Start: 24 @104164 has 6 MA's), (39, 104320), (42, 104347), (61, 104422), (68, 104458), (82, 104533), (83, 104536), (108, 104752), (119, 104827), (122, 104842), (125, 104872), (135, 104968), (142, 105022), (148, 105076),

Gene: Atlantean_198 Start: 104471, Stop: 105514, Start Num: 12

Candidate Starts for Atlantean_198:

(6, 104372), (7, 104387), (Start: 12 @104471 has 174 MA's), (Start: 24 @104558 has 6 MA's), (39, 104714), (42, 104741), (61, 104816), (68, 104852), (82, 104927), (83, 104930), (108, 105146), (119, 105221), (122, 105236), (125, 105266), (135, 105362), (142, 105416), (148, 105470),

Gene: Audrick_201 Start: 104670, Stop: 105713, Start Num: 12

Candidate Starts for Audrick_201:

(6, 104571), (7, 104586), (Start: 12 @104670 has 174 MA's), (Start: 24 @104757 has 6 MA's), (39, 104913), (42, 104940), (61, 105015), (68, 105051), (82, 105126), (83, 105129), (108, 105345), (119, 105420), (122, 105435), (125, 105465), (135, 105561), (142, 105615), (148, 105669),

Gene: Ava3_197 Start: 105214, Stop: 106257, Start Num: 12

Candidate Starts for Ava3_197:

(6, 105115), (7, 105130), (Start: 12 @105214 has 174 MA's), (Start: 24 @105301 has 6 MA's), (39, 105457), (42, 105484), (61, 105559), (68, 105595), (82, 105670), (83, 105673), (108, 105889), (119, 105964), (122, 105979), (125, 106009), (135, 106105), (142, 106159), (148, 106213),

Gene: Babyland_201 Start: 105248, Stop: 106291, Start Num: 12

Candidate Starts for Babyland_201:

(6, 105149), (7, 105164), (Start: 12 @105248 has 174 MA's), (Start: 24 @105335 has 6 MA's), (39, 105491), (42, 105518), (61, 105593), (68, 105629), (82, 105704), (83, 105707), (108, 105923), (119, 105998), (122, 106013), (125, 106043), (135, 106139), (142, 106193), (148, 106247),

Gene: BackyardAgain_195 Start: 103466, Stop: 104509, Start Num: 12

Candidate Starts for BackyardAgain_195:

(6, 103367), (7, 103382), (Start: 12 @103466 has 174 MA's), (Start: 24 @103553 has 6 MA's), (39, 103709), (42, 103736), (61, 103811), (68, 103847), (82, 103922), (83, 103925), (108, 104141), (119, 104216), (122, 104231), (125, 104261), (135, 104357), (142, 104411), (148, 104465),

Gene: BadAgartude_192 Start: 104570, Stop: 105613, Start Num: 12

Candidate Starts for BadAgartude_192:

(6, 104471), (7, 104486), (Start: 12 @104570 has 174 MA's), (Start: 24 @104657 has 6 MA's), (39, 104813), (42, 104840), (61, 104915), (68, 104951), (82, 105026), (83, 105029), (108, 105245), (119, 105320), (122, 105335), (125, 105365), (135, 105461), (142, 105515), (148, 105569),

Gene: BananaFence_195 Start: 104706, Stop: 105749, Start Num: 12

Candidate Starts for BananaFence_195:

(6, 104607), (7, 104622), (Start: 12 @104706 has 174 MA's), (Start: 24 @104793 has 6 MA's), (39, 104949), (42, 104976), (61, 105051), (68, 105087), (82, 105162), (83, 105165), (108, 105381), (119, 105456), (122, 105471), (125, 105501), (135, 105597), (142, 105651), (148, 105705),

Gene: Bangla1971_198 Start: 104477, Stop: 105520, Start Num: 12

Candidate Starts for Bangla1971_198:

(6, 104378), (7, 104393), (Start: 12 @104477 has 174 MA's), (Start: 24 @104564 has 6 MA's), (39, 104720), (42, 104747), (61, 104822), (68, 104858), (82, 104933), (83, 104936), (108, 105152), (119, 105227), (122, 105242), (125, 105272), (135, 105368), (142, 105422), (148, 105476),

Gene: Basquiat_196 Start: 104292, Stop: 105335, Start Num: 12

Candidate Starts for Basquiat_196:

(6, 104193), (7, 104208), (Start: 12 @104292 has 174 MA's), (Start: 24 @104379 has 6 MA's), (39, 104535), (42, 104562), (61, 104637), (68, 104673), (82, 104748), (83, 104751), (108, 104967), (119, 105042), (122, 105057), (125, 105087), (135, 105183), (142, 105237), (148, 105291),

Gene: BeanWater_190 Start: 104509, Stop: 105552, Start Num: 12

Candidate Starts for BeanWater_190:

(6, 104410), (7, 104425), (Start: 12 @104509 has 174 MA's), (Start: 24 @104596 has 6 MA's), (39, 104752), (42, 104779), (61, 104854), (68, 104890), (82, 104965), (83, 104968), (108, 105184), (119, 105259), (122, 105274), (125, 105304), (135, 105400), (142, 105454), (148, 105508),

Gene: Belieber_192 Start: 103606, Stop: 104649, Start Num: 12

Candidate Starts for Belieber_192:

(6, 103507), (7, 103522), (Start: 12 @103606 has 174 MA's), (Start: 24 @103693 has 6 MA's), (39, 103849), (42, 103876), (61, 103951), (68, 103987), (82, 104062), (83, 104065), (108, 104281), (119, 104356), (122, 104371), (125, 104401), (135, 104497), (142, 104551), (148, 104605),

Gene: Bezza_187 Start: 105021, Stop: 106064, Start Num: 12

Candidate Starts for Bezza_187:

(6, 104922), (7, 104937), (Start: 12 @105021 has 174 MA's), (Start: 24 @105108 has 6 MA's), (39, 105264), (42, 105291), (61, 105366), (68, 105402), (82, 105477), (83, 105480), (108, 105696), (119, 105771), (122, 105786), (125, 105816), (135, 105912), (142, 105966), (148, 106020),

Gene: BigCity_207 Start: 108080, Stop: 109123, Start Num: 12

Candidate Starts for BigCity_207:

(6, 107981), (7, 107996), (Start: 12 @108080 has 174 MA's), (Start: 24 @108167 has 6 MA's), (39, 108323), (42, 108350), (61, 108425), (68, 108461), (82, 108536), (83, 108539), (108, 108755), (119, 108830), (122, 108845), (125, 108875), (135, 108971), (142, 109025), (148, 109079),

Gene: Bigswole_203 Start: 107931, Stop: 108974, Start Num: 12

Candidate Starts for Bigswole_203:

(6, 107832), (7, 107847), (Start: 12 @107931 has 174 MA's), (Start: 24 @108018 has 6 MA's), (39, 108174), (42, 108201), (61, 108276), (68, 108312), (82, 108387), (83, 108390), (108, 108606), (119, 108681), (122, 108696), (125, 108726), (127, 108747), (135, 108822), (142, 108876), (148, 108930),

Gene: Bipolarisk_197 Start: 105483, Stop: 106526, Start Num: 12

Candidate Starts for Bipolarisk_197:

(6, 105384), (7, 105399), (Start: 12 @105483 has 174 MA's), (Start: 24 @105570 has 6 MA's), (39, 105726), (42, 105753), (61, 105828), (68, 105864), (82, 105939), (83, 105942), (108, 106158), (119, 106233), (122, 106248), (125, 106278), (135, 106374), (142, 106428), (148, 106482),

Gene: Blackbrain_196 Start: 105377, Stop: 106420, Start Num: 12

Candidate Starts for Blackbrain_196:

(6, 105278), (7, 105293), (Start: 12 @105377 has 174 MA's), (Start: 24 @105464 has 6 MA's), (39, 105620), (42, 105647), (61, 105722), (68, 105758), (82, 105833), (83, 105836), (108, 106052), (119, 106127), (122, 106142), (125, 106172), (135, 106268), (142, 106322), (148, 106376),

Gene: Blackdragon_193 Start: 104807, Stop: 105850, Start Num: 12

Candidate Starts for Blackdragon_193:

(6, 104708), (7, 104723), (Start: 12 @104807 has 174 MA's), (Start: 24 @104894 has 6 MA's), (39, 105050), (42, 105077), (61, 105152), (68, 105188), (82, 105263), (83, 105266), (108, 105482), (119, 105557), (122, 105572), (125, 105602), (135, 105698), (142, 105752), (148, 105806),

Gene: Blubba_188 Start: 108675, Stop: 109718, Start Num: 12

Candidate Starts for Blubba_188:

(6, 108576), (7, 108591), (Start: 12 @108675 has 174 MA's), (Start: 24 @108762 has 6 MA's), (39, 108918), (42, 108945), (61, 109020), (68, 109056), (82, 109131), (83, 109134), (108, 109350), (119, 109425), (122, 109440), (125, 109470), (135, 109566), (142, 109620), (148, 109674),

Gene: BobaPhatt_191 Start: 103491, Stop: 104534, Start Num: 12

Candidate Starts for BobaPhatt_191:

(6, 103392), (7, 103407), (Start: 12 @103491 has 174 MA's), (Start: 24 @103578 has 6 MA's), (39, 103734), (42, 103761), (61, 103836), (68, 103872), (82, 103947), (83, 103950), (108, 104166), (119, 104241), (122, 104256), (125, 104286), (135, 104382), (142, 104436), (148, 104490),

Gene: Bonray_201 Start: 106885, Stop: 107928, Start Num: 12

Candidate Starts for Bonray_201:

(6, 106786), (7, 106801), (Start: 12 @106885 has 174 MA's), (Start: 24 @106972 has 6 MA's), (39, 107128), (42, 107155), (61, 107230), (68, 107266), (82, 107341), (83, 107344), (108, 107560), (119, 107635), (122, 107650), (125, 107680), (135, 107776), (142, 107830), (148, 107884),

Gene: Bowman_196 Start: 105683, Stop: 106726, Start Num: 12

Candidate Starts for Bowman_196:

(6, 105584), (7, 105599), (Start: 12 @105683 has 174 MA's), (Start: 24 @105770 has 6 MA's), (39, 105926), (42, 105953), (61, 106028), (68, 106064), (82, 106139), (83, 106142), (108, 106358), (119, 106433), (122, 106448), (125, 106478), (135, 106574), (142, 106628), (148, 106682),

Gene: Bread_194 Start: 104883, Stop: 105926, Start Num: 12

Candidate Starts for Bread_194:

(6, 104784), (7, 104799), (Start: 12 @104883 has 174 MA's), (Start: 24 @104970 has 6 MA's), (39, 105126), (42, 105153), (61, 105228), (68, 105264), (82, 105339), (83, 105342), (108, 105558), (119, 105633), (122, 105648), (125, 105678), (135, 105774), (142, 105828), (148, 105882),

Gene: Breeniome_197 Start: 104028, Stop: 105071, Start Num: 12

Candidate Starts for Breeniome_197:

(6, 103929), (7, 103944), (Start: 12 @104028 has 174 MA's), (Start: 24 @104115 has 6 MA's), (39, 104271), (42, 104298), (61, 104373), (68, 104409), (82, 104484), (83, 104487), (108, 104703), (119, 104778), (122, 104793), (125, 104823), (135, 104919), (142, 104973), (148, 105027),

Gene: Burrough_200 Start: 106344, Stop: 107387, Start Num: 12

Candidate Starts for Burrough_200:

(6, 106245), (7, 106260), (Start: 12 @106344 has 174 MA's), (Start: 24 @106431 has 6 MA's), (39, 106587), (42, 106614), (61, 106689), (68, 106725), (82, 106800), (83, 106803), (108, 107019), (119, 107094), (122, 107109), (125, 107139), (135, 107235), (142, 107289), (148, 107343),

Gene: Bxz1_188 Start: 107630, Stop: 108586, Start Num: 24

Candidate Starts for Bxz1_188:

(6, 107444), (7, 107459), (Start: 12 @107543 has 174 MA's), (Start: 24 @107630 has 6 MA's), (39, 107786), (42, 107813), (61, 107888), (68, 107924), (82, 107999), (83, 108002), (108, 108218), (119, 108293), (122, 108308), (125, 108338), (135, 108434), (142, 108488), (148, 108542),

Gene: Cactojaque_194 Start: 104312, Stop: 105355, Start Num: 12

Candidate Starts for Cactojaque_194:

(6, 104213), (7, 104228), (Start: 12 @104312 has 174 MA's), (Start: 24 @104399 has 6 MA's), (39, 104555), (42, 104582), (61, 104657), (68, 104693), (82, 104768), (83, 104771), (108, 104987), (119, 105062), (122, 105077), (125, 105107), (135, 105203), (142, 105257), (148, 105311),

Gene: Cali_192 Start: 106346, Stop: 107302, Start Num: 24

Candidate Starts for Cali_192:

(6, 106160), (7, 106175), (Start: 12 @106259 has 174 MA's), (Start: 24 @106346 has 6 MA's), (39, 106502), (42, 106529), (61, 106604), (68, 106640), (82, 106715), (83, 106718), (108, 106934), (119, 107009), (122, 107024), (125, 107054), (135, 107150), (142, 107204), (148, 107258),

Gene: Cane17_190 Start: 109084, Stop: 110127, Start Num: 12

Candidate Starts for Cane17_190:

(6, 108985), (7, 109000), (Start: 12 @109084 has 174 MA's), (Start: 24 @109171 has 6 MA's), (39, 109327), (42, 109354), (61, 109429), (68, 109465), (82, 109540), (83, 109543), (108, 109759), (119, 109834), (122, 109849), (125, 109879), (135, 109975), (142, 110029), (148, 110083),

Gene: Capablanca_203 Start: 107480, Stop: 108523, Start Num: 12

Candidate Starts for Capablanca_203:

(6, 107381), (7, 107396), (Start: 12 @107480 has 174 MA's), (Start: 24 @107567 has 6 MA's), (39, 107723), (42, 107750), (61, 107825), (68, 107861), (82, 107936), (83, 107939), (108, 108155), (119, 108230), (122, 108245), (125, 108275), (135, 108371), (142, 108425), (148, 108479),

Gene: Caravan_189 Start: 105291, Stop: 106334, Start Num: 12

Candidate Starts for Caravan_189:

(7, 105207), (Start: 12 @105291 has 174 MA's), (Start: 24 @105378 has 6 MA's), (39, 105534), (42, 105561), (61, 105636), (68, 105672), (82, 105747), (83, 105750), (108, 105966), (119, 106041), (122, 106056), (125, 106086), (135, 106182), (142, 106236), (148, 106290),

Gene: Catera_192 Start: 104080, Stop: 105036, Start Num: 24

Candidate Starts for Catera_192:

(6, 103894), (7, 103909), (Start: 12 @103993 has 174 MA's), (Start: 24 @104080 has 6 MA's), (39, 104236), (42, 104263), (61, 104338), (68, 104374), (82, 104449), (83, 104452), (108, 104668), (119, 104743), (122, 104758), (125, 104788), (135, 104884), (142, 104938), (148, 104992),

Gene: Chargie21_196 Start: 104292, Stop: 105335, Start Num: 12

Candidate Starts for Chargie21_196:

(6, 104193), (7, 104208), (Start: 12 @104292 has 174 MA's), (Start: 24 @104379 has 6 MA's), (39, 104535), (42, 104562), (61, 104637), (68, 104673), (82, 104748), (83, 104751), (108, 104967), (119, 105042), (122, 105057), (125, 105087), (135, 105183), (142, 105237), (148, 105291),

Gene: CharlieB_192 Start: 104711, Stop: 105754, Start Num: 12

Candidate Starts for CharlieB_192:

(6, 104612), (7, 104627), (Start: 12 @104711 has 174 MA's), (Start: 24 @104798 has 6 MA's), (39, 104954), (42, 104981), (61, 105056), (68, 105092), (82, 105167), (83, 105170), (108, 105386), (119, 105461), (122, 105476), (125, 105506), (135, 105602), (142, 105656), (148, 105710),

Gene: ChaylaJr_196 Start: 104720, Stop: 105763, Start Num: 12

Candidate Starts for ChaylaJr_196:

(6, 104621), (7, 104636), (Start: 12 @104720 has 174 MA's), (Start: 24 @104807 has 6 MA's), (39, 104963), (42, 104990), (61, 105065), (68, 105101), (82, 105176), (83, 105179), (108, 105395), (119, 105470), (122, 105485), (125, 105515), (135, 105611), (142, 105665), (148, 105719),

Gene: CherryTomatoes_145 Start: 99224, Stop: 100399, Start Num: 14

Candidate Starts for CherryTomatoes_145:

(1, 98900), (2, 99104), (8, 99143), (Start: 14 @99224 has 4 MA's), (35, 99404), (38, 99443), (47, 99509), (54, 99563), (77, 99719), (79, 99758), (88, 99848), (101, 99980), (102, 99983), (103, 100001),

(109, 100043), (128, 100193), (131, 100208), (132, 100211), (143, 100301), (149, 100355),

Gene: ChickenPhender_195 Start: 104439, Stop: 105482, Start Num: 12

Candidate Starts for ChickenPhender_195:

(6, 104340), (7, 104355), (Start: 12 @104439 has 174 MA's), (Start: 24 @104526 has 6 MA's), (39, 104682), (42, 104709), (61, 104784), (68, 104820), (82, 104895), (83, 104898), (108, 105114), (119, 105189), (122, 105204), (125, 105234), (135, 105330), (142, 105384), (148, 105438),

Gene: Chomp_198 Start: 105760, Stop: 106803, Start Num: 12

Candidate Starts for Chomp_198:

(6, 105661), (7, 105676), (Start: 12 @105760 has 174 MA's), (Start: 24 @105847 has 6 MA's), (39, 106003), (42, 106030), (61, 106105), (68, 106141), (82, 106216), (83, 106219), (108, 106435), (119, 106510), (122, 106525), (125, 106555), (135, 106651), (142, 106705), (148, 106759),

Gene: CindyLou_199 Start: 106020, Stop: 107063, Start Num: 12

Candidate Starts for CindyLou_199:

(6, 105921), (7, 105936), (Start: 12 @106020 has 174 MA's), (Start: 24 @106107 has 6 MA's), (39, 106263), (42, 106290), (61, 106365), (68, 106401), (82, 106476), (83, 106479), (108, 106695), (119, 106770), (122, 106785), (125, 106815), (135, 106911), (142, 106965), (148, 107019),

Gene: Cleatunium_192 Start: 104712, Stop: 105755, Start Num: 12

Candidate Starts for Cleatunium_192:

(6, 104613), (7, 104628), (Start: 12 @104712 has 174 MA's), (Start: 24 @104799 has 6 MA's), (39, 104955), (42, 104982), (61, 105057), (68, 105093), (82, 105168), (83, 105171), (108, 105387), (119, 105462), (122, 105477), (125, 105507), (135, 105603), (142, 105657), (148, 105711),

Gene: Colt_190 Start: 108315, Stop: 109358, Start Num: 12

Candidate Starts for Colt_190:

(6, 108216), (7, 108231), (Start: 12 @108315 has 174 MA's), (Start: 24 @108402 has 6 MA's), (39, 108558), (42, 108585), (61, 108660), (68, 108696), (82, 108771), (83, 108774), (108, 108990), (119, 109065), (122, 109080), (125, 109110), (135, 109206), (142, 109260), (148, 109314),

Gene: Concombres_203 Start: 107623, Stop: 108666, Start Num: 12

Candidate Starts for Concombres_203:

(6, 107524), (7, 107539), (Start: 12 @107623 has 174 MA's), (Start: 24 @107710 has 6 MA's), (39, 107866), (42, 107893), (61, 107968), (68, 108004), (82, 108079), (83, 108082), (108, 108298), (119, 108373), (122, 108388), (125, 108418), (135, 108514), (142, 108568), (148, 108622),

Gene: DTDevon_200 Start: 106509, Stop: 107552, Start Num: 12

Candidate Starts for DTDevon_200:

(6, 106410), (7, 106425), (Start: 12 @106509 has 174 MA's), (Start: 24 @106596 has 6 MA's), (39, 106752), (42, 106779), (61, 106854), (68, 106890), (82, 106965), (83, 106968), (108, 107184), (119, 107259), (122, 107274), (125, 107304), (135, 107400), (142, 107454), (148, 107508),

Gene: Daffodil_203 Start: 105783, Stop: 106826, Start Num: 12

Candidate Starts for Daffodil_203:

(6, 105684), (7, 105699), (Start: 12 @105783 has 174 MA's), (Start: 24 @105870 has 6 MA's), (39, 106026), (42, 106053), (61, 106128), (68, 106164), (82, 106239), (83, 106242), (108, 106458), (119, 106533), (122, 106548), (125, 106578), (135, 106674), (142, 106728), (148, 106782),

Gene: Dandelion_206 Start: 109416, Stop: 110459, Start Num: 12

Candidate Starts for Dandelion_206:

(6, 109317), (7, 109332), (Start: 12 @109416 has 174 MA's), (Start: 24 @109503 has 6 MA's), (39, 109659), (42, 109686), (61, 109761), (68, 109797), (82, 109872), (83, 109875), (108, 110091), (119, 110166), (122, 110181), (125, 110211), (135, 110307), (142, 110361), (148, 110415),

Gene: Darko_197 Start: 104710, Stop: 105753, Start Num: 12

Candidate Starts for Darko_197:

(6, 104611), (7, 104626), (Start: 12 @104710 has 174 MA's), (Start: 24 @104797 has 6 MA's), (39, 104953), (42, 104980), (61, 105055), (68, 105091), (82, 105166), (83, 105169), (108, 105385), (119, 105460), (122, 105475), (125, 105505), (135, 105601), (142, 105655), (148, 105709),

Gene: DeejaClivia_187 Start: 104152, Stop: 105195, Start Num: 12

Candidate Starts for DeejaClivia_187:

(6, 104053), (7, 104068), (Start: 12 @104152 has 174 MA's), (Start: 24 @104239 has 6 MA's), (39, 104395), (42, 104422), (61, 104497), (68, 104533), (82, 104608), (83, 104611), (108, 104827), (119, 104902), (122, 104917), (125, 104947), (135, 105043), (142, 105097), (148, 105151),

Gene: Delilah_197 Start: 105901, Stop: 106944, Start Num: 12

Candidate Starts for Delilah_197:

(6, 105802), (7, 105817), (Start: 12 @105901 has 174 MA's), (Start: 24 @105988 has 6 MA's), (39, 106144), (42, 106171), (61, 106246), (68, 106282), (82, 106357), (83, 106360), (108, 106576), (119, 106651), (122, 106666), (125, 106696), (135, 106792), (142, 106846), (148, 106900),

Gene: Delylah_200 Start: 105881, Stop: 106924, Start Num: 12

Candidate Starts for Delylah_200:

(6, 105782), (7, 105797), (Start: 12 @105881 has 174 MA's), (Start: 24 @105968 has 6 MA's), (39, 106124), (42, 106151), (61, 106226), (68, 106262), (82, 106337), (83, 106340), (108, 106556), (119, 106631), (122, 106646), (125, 106676), (135, 106772), (142, 106826), (148, 106880),

Gene: Demodog_204 Start: 107633, Stop: 108676, Start Num: 12

Candidate Starts for Demodog_204:

(6, 107534), (7, 107549), (Start: 12 @107633 has 174 MA's), (Start: 24 @107720 has 6 MA's), (39, 107876), (42, 107903), (61, 107978), (68, 108014), (82, 108089), (83, 108092), (108, 108308), (119, 108383), (122, 108398), (125, 108428), (135, 108524), (142, 108578), (148, 108632),

Gene: Derek_195 Start: 105037, Stop: 106080, Start Num: 12

Candidate Starts for Derek_195:

(6, 104938), (7, 104953), (Start: 12 @105037 has 174 MA's), (Start: 24 @105124 has 6 MA's), (39, 105280), (42, 105307), (61, 105382), (68, 105418), (82, 105493), (83, 105496), (108, 105712), (119, 105787), (122, 105802), (125, 105832), (135, 105928), (142, 105982), (148, 106036),

Gene: Dessert_196 Start: 104037, Stop: 105080, Start Num: 12

Candidate Starts for Dessert_196:

(6, 103938), (7, 103953), (Start: 12 @104037 has 174 MA's), (Start: 24 @104124 has 6 MA's), (39, 104280), (42, 104307), (61, 104382), (68, 104418), (82, 104493), (83, 104496), (108, 104712), (119, 104787), (122, 104802), (125, 104832), (135, 104928), (142, 104982), (148, 105036),

Gene: Dietrick_188 Start: 104022, Stop: 105065, Start Num: 12

Candidate Starts for Dietrick_188:

(6, 103923), (7, 103938), (Start: 12 @104022 has 174 MA's), (Start: 24 @104109 has 6 MA's), (39, 104265), (42, 104292), (61, 104367), (68, 104403), (82, 104478), (83, 104481), (108, 104697), (119, 104772), (122, 104787), (125, 104817), (135, 104913), (142, 104967), (148, 105021),

Gene: DirtMonster_192 Start: 105262, Stop: 106305, Start Num: 12

Candidate Starts for DirtMonster_192:

(4, 105154), (6, 105163), (7, 105178), (Start: 12 @105262 has 174 MA's), (Start: 24 @105349 has 6 MA's), (39, 105505), (42, 105532), (61, 105607), (68, 105643), (82, 105718), (83, 105721), (108, 105937), (119, 106012), (122, 106027), (125, 106057), (135, 106153), (142, 106207), (148, 106261),

Gene: Domi_192 Start: 105064, Stop: 106107, Start Num: 12

Candidate Starts for Domi_192:

(6, 104965), (7, 104980), (Start: 12 @105064 has 174 MA's), (Start: 24 @105151 has 6 MA's), (39, 105307), (42, 105334), (61, 105409), (68, 105445), (82, 105520), (83, 105523), (108, 105739), (119, 105814), (122, 105829), (125, 105859), (135, 105955), (142, 106009), (148, 106063),

Gene: DrPhinkDaddy_196 Start: 106561, Stop: 107604, Start Num: 12

Candidate Starts for DrPhinkDaddy_196:

(6, 106462), (7, 106477), (Start: 12 @106561 has 174 MA's), (Start: 24 @106648 has 6 MA's), (39, 106804), (42, 106831), (61, 106906), (68, 106942), (82, 107017), (83, 107020), (108, 107236), (119, 107311), (122, 107326), (125, 107356), (135, 107452), (142, 107506), (148, 107560),

Gene: Drazdys_196 Start: 105154, Stop: 106197, Start Num: 12

Candidate Starts for Drazdys_196:

(6, 105055), (7, 105070), (Start: 12 @105154 has 174 MA's), (Start: 24 @105241 has 6 MA's), (39, 105397), (42, 105424), (61, 105499), (68, 105535), (82, 105610), (83, 105613), (108, 105829), (119, 105904), (122, 105919), (125, 105949), (135, 106045), (142, 106099), (148, 106153),

Gene: Duckfeet_192 Start: 104680, Stop: 105723, Start Num: 12

Candidate Starts for Duckfeet_192:

(6, 104581), (7, 104596), (Start: 12 @104680 has 174 MA's), (Start: 24 @104767 has 6 MA's), (39, 104923), (42, 104950), (61, 105025), (68, 105061), (82, 105136), (83, 105139), (108, 105355), (119, 105430), (122, 105445), (125, 105475), (135, 105571), (142, 105625), (148, 105679),

Gene: E3_gp145 Start: 95839, Stop: 97035, Start Num: 9

Candidate Starts for E3_gp145:

(9, 95839), (23, 95956), (34, 96055), (49, 96172), (53, 96214), (56, 96238), (59, 96253), (63, 96271), (68, 96313), (88, 96460), (100, 96583), (107, 96628), (109, 96664), (110, 96670), (111, 96682), (116, 96700), (129, 96814),

Gene: ET08_186 Start: 104745, Stop: 105788, Start Num: 12

Candidate Starts for ET08_186:

(6, 104646), (7, 104661), (Start: 12 @104745 has 174 MA's), (Start: 24 @104832 has 6 MA's), (39, 104988), (42, 105015), (61, 105090), (68, 105126), (82, 105201), (83, 105204), (108, 105420), (119, 105495), (122, 105510), (125, 105540), (135, 105636), (142, 105690), (148, 105744),

Gene: EasyJones_202 Start: 105535, Stop: 106578, Start Num: 12

Candidate Starts for EasyJones_202:

(6, 105436), (7, 105451), (Start: 12 @105535 has 174 MA's), (Start: 24 @105622 has 6 MA's), (39, 105778), (42, 105805), (61, 105880), (68, 105916), (82, 105991), (83, 105994), (108, 106210), (119, 106285), (122, 106300), (125, 106330), (135, 106426), (142, 106480), (148, 106534),

Gene: EggyFarm_207 Start: 108081, Stop: 109124, Start Num: 12

Candidate Starts for EggyFarm_207:

(6, 107982), (7, 107997), (Start: 12 @108081 has 174 MA's), (Start: 24 @108168 has 6 MA's), (39, 108324), (42, 108351), (61, 108426), (68, 108462), (82, 108537), (83, 108540), (108, 108756), (119, 108831), (122, 108846), (125, 108876), (135, 108972), (142, 109026), (148, 109080),

Gene: EmToTheThree_199 Start: 105934, Stop: 106977, Start Num: 12

Candidate Starts for EmToTheThree_199:

(6, 105835), (7, 105850), (Start: 12 @105934 has 174 MA's), (Start: 24 @106021 has 6 MA's), (39, 106177), (42, 106204), (61, 106279), (68, 106315), (82, 106390), (83, 106393), (108, 106609), (119, 106684), (122, 106699), (125, 106729), (135, 106825), (142, 106879), (148, 106933),

Gene: EmmaElysia_201 Start: 105644, Stop: 106687, Start Num: 12

Candidate Starts for EmmaElysia_201:

(6, 105545), (7, 105560), (Start: 12 @105644 has 174 MA's), (Start: 24 @105731 has 6 MA's), (39, 105887), (42, 105914), (61, 105989), (68, 106025), (82, 106100), (83, 106103), (108, 106319), (119, 106394), (122, 106409), (125, 106439), (135, 106535), (142, 106589), (148, 106643),

Gene: Erdmann_200 Start: 105892, Stop: 106935, Start Num: 12

Candidate Starts for Erdmann_200:

(6, 105793), (7, 105808), (Start: 12 @105892 has 174 MA's), (Start: 24 @105979 has 6 MA's), (39, 106135), (42, 106162), (61, 106237), (68, 106273), (82, 106348), (83, 106351), (108, 106567), (119, 106642), (122, 106657), (125, 106687), (135, 106783), (142, 106837), (148, 106891),

Gene: ErnieJ_191 Start: 103714, Stop: 104757, Start Num: 12

Candidate Starts for ErnieJ_191:

(6, 103615), (7, 103630), (Start: 12 @103714 has 174 MA's), (Start: 24 @103801 has 6 MA's), (39, 103957), (42, 103984), (61, 104059), (68, 104095), (82, 104170), (83, 104173), (108, 104389), (119, 104464), (122, 104479), (125, 104509), (135, 104605), (142, 104659), (148, 104713),

Gene: Essence_195 Start: 104366, Stop: 105409, Start Num: 12

Candidate Starts for Essence_195:

(6, 104267), (7, 104282), (Start: 12 @104366 has 174 MA's), (Start: 24 @104453 has 6 MA's), (39, 104609), (42, 104636), (61, 104711), (68, 104747), (82, 104822), (83, 104825), (108, 105041), (119, 105116), (122, 105131), (125, 105161), (135, 105257), (142, 105311), (148, 105365),

Gene: Ewok_198 Start: 105811, Stop: 106854, Start Num: 12

Candidate Starts for Ewok_198:

(6, 105712), (7, 105727), (Start: 12 @105811 has 174 MA's), (Start: 24 @105898 has 6 MA's), (39, 106054), (42, 106081), (61, 106156), (68, 106192), (82, 106267), (83, 106270), (108, 106486), (119, 106561), (122, 106576), (125, 106606), (135, 106702), (142, 106756), (148, 106810),

Gene: Finch_67 Start: 57570, Stop: 58805, Start Num: 5

Candidate Starts for Finch_67:

(Start: 5 @57570 has 1 MA's), (Start: 12 @57666 has 174 MA's), (13, 57675), (21, 57744), (Start: 25 @57771 has 2 MA's), (27, 57795), (34, 57849), (41, 57936), (43, 57945), (44, 57948), (57, 58020), (58, 58026), (60, 58029), (65, 58062), (90, 58227), (91, 58236), (92, 58245), (93, 58254), (97, 58287), (101, 58329), (102, 58332), (104, 58353), (107, 58371), (113, 58434), (124, 58500), (128, 58548), (130, 58560), (131, 58563), (137, 58623), (139, 58629), (145, 58674), (146, 58677), (149, 58716),

Gene: Fixie_198 Start: 105146, Stop: 106189, Start Num: 12

Candidate Starts for Fixie_198:

(6, 105047), (7, 105062), (Start: 12 @105146 has 174 MA's), (Start: 24 @105233 has 6 MA's), (39, 105389), (42, 105416), (61, 105491), (68, 105527), (82, 105602), (83, 105605), (108, 105821), (119, 105896), (122, 105911), (125, 105941), (135, 106037), (142, 106091), (148, 106145),

Gene: Flabslab_194 Start: 103856, Stop: 104899, Start Num: 12

Candidate Starts for Flabslab_194:

(6, 103757), (7, 103772), (Start: 12 @103856 has 174 MA's), (Start: 24 @103943 has 6 MA's), (39, 104099), (42, 104126), (61, 104201), (68, 104237), (82, 104312), (83, 104315), (108, 104531), (119, 104606), (122, 104621), (125, 104651), (135, 104747), (142, 104801), (148, 104855),

Gene: Fludd_199 Start: 105247, Stop: 106290, Start Num: 12

Candidate Starts for Fludd_199:

(6, 105148), (7, 105163), (Start: 12 @105247 has 174 MA's), (Start: 24 @105334 has 6 MA's), (39, 105490), (42, 105517), (61, 105592), (68, 105628), (82, 105703), (83, 105706), (108, 105922), (119, 105997), (122, 106012), (125, 106042), (135, 106138), (142, 106192), (148, 106246),

Gene: Fongie_199 Start: 105525, Stop: 106568, Start Num: 12

Candidate Starts for Fongie_199:

(6, 105426), (7, 105441), (Start: 12 @105525 has 174 MA's), (Start: 24 @105612 has 6 MA's), (39, 105768), (42, 105795), (61, 105870), (68, 105906), (82, 105981), (83, 105984), (108, 106200), (119, 106275), (122, 106290), (125, 106320), (135, 106416), (142, 106470), (148, 106524),

Gene: FoxtrotP1_197 Start: 106491, Stop: 107534, Start Num: 12

Candidate Starts for FoxtrotP1_197:

(6, 106392), (7, 106407), (Start: 12 @106491 has 174 MA's), (Start: 24 @106578 has 6 MA's), (39, 106734), (42, 106761), (61, 106836), (68, 106872), (82, 106947), (83, 106950), (108, 107166), (119, 107241), (122, 107256), (125, 107286), (135, 107382), (142, 107436), (148, 107490),

Gene: FrayBell_201 Start: 105029, Stop: 106072, Start Num: 12

Candidate Starts for FrayBell_201:

(6, 104930), (7, 104945), (Start: 12 @105029 has 174 MA's), (Start: 24 @105116 has 6 MA's), (39, 105272), (42, 105299), (61, 105374), (82, 105485), (83, 105488), (108, 105704), (119, 105779), (122, 105794), (125, 105824), (135, 105920), (142, 105974), (148, 106028),

Gene: FudgeTart_194 Start: 104958, Stop: 106001, Start Num: 12

Candidate Starts for FudgeTart_194:

(6, 104859), (7, 104874), (Start: 12 @104958 has 174 MA's), (Start: 24 @105045 has 6 MA's), (39, 105201), (42, 105228), (61, 105303), (68, 105339), (82, 105414), (83, 105417), (108, 105633), (119, 105708), (122, 105723), (125, 105753), (135, 105849), (142, 105903), (148, 105957),

Gene: Gabriel_201 Start: 104104, Stop: 105147, Start Num: 12

Candidate Starts for Gabriel_201:

(6, 104005), (7, 104020), (Start: 12 @104104 has 174 MA's), (Start: 24 @104191 has 6 MA's), (39, 104347), (42, 104374), (61, 104449), (68, 104485), (82, 104560), (83, 104563), (108, 104779), (119, 104854), (122, 104869), (125, 104899), (135, 104995), (142, 105049), (148, 105103),

Gene: Gamgam_199 Start: 104461, Stop: 105504, Start Num: 12

Candidate Starts for Gamgam_199:

(6, 104362), (7, 104377), (Start: 12 @104461 has 174 MA's), (Start: 24 @104548 has 6 MA's), (39, 104704), (42, 104731), (61, 104806), (68, 104842), (82, 104917), (83, 104920), (108, 105136), (119, 105211), (122, 105226), (125, 105256), (135, 105352), (142, 105406), (148, 105460),

Gene: Ghost_198 Start: 104691, Stop: 105734, Start Num: 12

Candidate Starts for Ghost_198:

(6, 104592), (7, 104607), (Start: 12 @104691 has 174 MA's), (Start: 24 @104778 has 6 MA's), (39, 104934), (42, 104961), (61, 105036), (68, 105072), (82, 105147), (83, 105150), (108, 105366), (119, 105441), (122, 105456), (125, 105486), (135, 105582), (142, 105636), (148, 105690),

Gene: Gizmo_204 Start: 107809, Stop: 108852, Start Num: 12

Candidate Starts for Gizmo_204:

(6, 107710), (7, 107725), (Start: 12 @107809 has 174 MA's), (Start: 24 @107896 has 6 MA's), (39, 108052), (42, 108079), (61, 108154), (68, 108190), (82, 108265), (83, 108268), (108, 108484), (119, 108559), (122, 108574), (125, 108604), (135, 108700), (142, 108754), (148, 108808),

Gene: GlutenPhree_199 Start: 104472, Stop: 105515, Start Num: 12

Candidate Starts for GlutenPhree_199:

(6, 104373), (7, 104388), (Start: 12 @104472 has 174 MA's), (Start: 24 @104559 has 6 MA's), (39, 104715), (42, 104742), (61, 104817), (68, 104853), (82, 104928), (83, 104931), (108, 105147), (119, 105222), (122, 105237), (125, 105267), (135, 105363), (142, 105417), (148, 105471),

Gene: Grasshills_206 Start: 108080, Stop: 109123, Start Num: 12

Candidate Starts for Grasshills_206:

(6, 107981), (7, 107996), (Start: 12 @108080 has 174 MA's), (Start: 24 @108167 has 6 MA's), (39, 108323), (42, 108350), (61, 108425), (68, 108461), (82, 108536), (83, 108539), (108, 108755), (119, 108830), (122, 108845), (125, 108875), (135, 108971), (142, 109025), (148, 109079),

Gene: Greely_188 Start: 102641, Stop: 103768, Start Num: 11

Candidate Starts for Greely_188:

(Start: 11 @102641 has 3 MA's), (18, 102686), (19, 102689), (22, 102722), (42, 102914), (46, 102923), (62, 102992), (67, 103031), (68, 103049), (70, 103061), (79, 103118), (83, 103166), (88, 103208), (94, 103277), (98, 103298), (101, 103337), (102, 103340), (109, 103409), (112, 103433), (126, 103532), (137, 103634), (144, 103670), (151, 103736),

Gene: Grungle_183 Start: 102728, Stop: 103771, Start Num: 12

Candidate Starts for Grungle_183:

(6, 102629), (7, 102644), (Start: 12 @102728 has 174 MA's), (Start: 24 @102815 has 6 MA's), (39, 102971), (42, 102998), (61, 103073), (68, 103109), (82, 103184), (83, 103187), (108, 103403), (119, 103478), (122, 103493), (125, 103523), (135, 103619), (142, 103673), (148, 103727),

Gene: Guwapp_193 Start: 103216, Stop: 104259, Start Num: 12

Candidate Starts for Guwapp_193:

(6, 103117), (7, 103132), (Start: 12 @103216 has 174 MA's), (Start: 24 @103303 has 6 MA's), (39, 103459), (42, 103486), (61, 103561), (68, 103597), (82, 103672), (83, 103675), (108, 103891), (119, 103966), (122, 103981), (125, 104011), (135, 104107), (142, 104161), (148, 104215),

Gene: Halldule_191 Start: 103601, Stop: 104644, Start Num: 12

Candidate Starts for Halldule_191:

(6, 103502), (7, 103517), (Start: 12 @103601 has 174 MA's), (Start: 24 @103688 has 6 MA's), (39, 103844), (42, 103871), (61, 103946), (68, 103982), (82, 104057), (83, 104060), (108, 104276), (119, 104351), (122, 104366), (125, 104396), (135, 104492), (142, 104546), (148, 104600),

Gene: HyRo_186 Start: 104725, Stop: 105768, Start Num: 12

Candidate Starts for HyRo_186:

(6, 104626), (7, 104641), (Start: 12 @104725 has 174 MA's), (Start: 24 @104812 has 6 MA's), (39, 104968), (42, 104995), (61, 105070), (68, 105106), (82, 105181), (83, 105184), (108, 105400), (119, 105475), (122, 105490), (125, 105520), (135, 105616), (142, 105670), (148, 105724),

Gene: I3_208 Start: 107461, Stop: 108504, Start Num: 12

Candidate Starts for I3_208:

(Start: 12 @107461 has 174 MA's), (26, 107569), (39, 107704), (42, 107731), (61, 107806), (68, 107842), (82, 107917), (83, 107920), (108, 108136), (119, 108211), (122, 108226), (125, 108256), (135, 108352), (142, 108406), (148, 108460),

Gene: IkeLoa_190 Start: 104123, Stop: 105166, Start Num: 12

Candidate Starts for IkeLoa_190:

(6, 104024), (7, 104039), (Start: 12 @104123 has 174 MA's), (Start: 24 @104210 has 6 MA's), (39, 104366), (42, 104393), (61, 104468), (68, 104504), (82, 104579), (83, 104582), (108, 104798), (119, 104873), (122, 104888), (125, 104918), (135, 105014), (142, 105068), (148, 105122),

Gene: InigoMontoya_201 Start: 105135, Stop: 106178, Start Num: 12

Candidate Starts for InigoMontoya_201:

(6, 105036), (7, 105051), (Start: 12 @105135 has 174 MA's), (Start: 24 @105222 has 6 MA's), (39, 105378), (42, 105405), (61, 105480), (68, 105516), (82, 105591), (83, 105594), (108, 105810), (119, 105885), (122, 105900), (125, 105930), (135, 106026), (142, 106080), (148, 106134),

Gene: InterFolia_201 Start: 106835, Stop: 107878, Start Num: 12

Candidate Starts for InterFolia_201:

(6, 106736), (7, 106751), (Start: 12 @106835 has 174 MA's), (Start: 24 @106922 has 6 MA's), (39, 107078), (42, 107105), (61, 107180), (68, 107216), (82, 107291), (83, 107294), (108, 107510), (119, 107585), (122, 107600), (125, 107630), (135, 107726), (142, 107780), (148, 107834),

Gene: Iota_193 Start: 104820, Stop: 105863, Start Num: 12

Candidate Starts for Iota_193:

(6, 104721), (7, 104736), (Start: 12 @104820 has 174 MA's), (Start: 24 @104907 has 6 MA's), (39, 105063), (42, 105090), (61, 105165), (68, 105201), (82, 105276), (83, 105279), (108, 105495), (119, 105570), (122, 105585), (125, 105615), (135, 105711), (142, 105765), (148, 105819),

Gene: Issimir_192 Start: 105082, Stop: 106125, Start Num: 12

Candidate Starts for Issimir_192:

(6, 104983), (7, 104998), (Start: 12 @105082 has 174 MA's), (Start: 24 @105169 has 6 MA's), (39, 105325), (42, 105352), (61, 105427), (68, 105463), (82, 105538), (83, 105541), (108, 105757), (119, 105832), (122, 105847), (125, 105877), (135, 105973), (142, 106027), (148, 106081),

Gene: Izajani_197 Start: 105951, Stop: 106994, Start Num: 12

Candidate Starts for Izajani_197:

(6, 105852), (7, 105867), (Start: 12 @105951 has 174 MA's), (Start: 24 @106038 has 6 MA's), (39, 106194), (42, 106221), (61, 106296), (68, 106332), (82, 106407), (83, 106410), (108, 106626), (119, 106701), (122, 106716), (125, 106746), (135, 106842), (142, 106896), (148, 106950),

Gene: JPickles_194 Start: 103120, Stop: 104163, Start Num: 12

Candidate Starts for JPickles_194:

(6, 103021), (7, 103036), (Start: 12 @103120 has 174 MA's), (Start: 24 @103207 has 6 MA's), (39, 103363), (42, 103390), (61, 103465), (68, 103501), (82, 103576), (83, 103579), (108, 103795), (119, 103870), (122, 103885), (125, 103915), (135, 104011), (142, 104065), (148, 104119),

Gene: Janiyra_202 Start: 105669, Stop: 106712, Start Num: 12

Candidate Starts for Janiyra_202:

(6, 105570), (7, 105585), (Start: 12 @105669 has 174 MA's), (Start: 24 @105756 has 6 MA's), (39, 105912), (42, 105939), (61, 106014), (68, 106050), (82, 106125), (83, 106128), (108, 106344), (119, 106419), (122, 106434), (125, 106464), (135, 106560), (142, 106614), (148, 106668),

Gene: JayJay_201 Start: 106366, Stop: 107409, Start Num: 12

Candidate Starts for JayJay_201:

(4, 106258), (6, 106267), (7, 106282), (Start: 12 @106366 has 174 MA's), (Start: 24 @106453 has 6 MA's), (39, 106609), (42, 106636), (61, 106711), (68, 106747), (82, 106822), (83, 106825), (108,

107041), (119, 107116), (122, 107131), (125, 107161), (135, 107257), (142, 107311), (148, 107365),

Gene: Jaygup_194 Start: 104181, Stop: 105224, Start Num: 12

Candidate Starts for Jaygup_194:

(6, 104082), (7, 104097), (Start: 12 @104181 has 174 MA's), (Start: 24 @104268 has 6 MA's), (39, 104424), (42, 104451), (61, 104526), (68, 104562), (82, 104637), (83, 104640), (108, 104856), (119, 104931), (122, 104946), (125, 104976), (135, 105072), (142, 105126), (148, 105180),

Gene: JeanGrey_85 Start: 67624, Stop: 68880, Start Num: 3

Candidate Starts for JeanGrey_85:

(Start: 3 @67624 has 1 MA's), (17, 67771), (20, 67810), (Start: 25 @67843 has 2 MA's), (28, 67870), (33, 67900), (45, 68029), (55, 68092), (80, 68242), (88, 68323), (89, 68329), (105, 68482), (119, 68590), (129, 68683), (132, 68698), (138, 68758), (140, 68770), (150, 68857), (151, 68863),

Gene: Jedediah_198 Start: 105234, Stop: 106277, Start Num: 12

Candidate Starts for Jedediah_198:

(6, 105135), (7, 105150), (Start: 12 @105234 has 174 MA's), (Start: 24 @105321 has 6 MA's), (39, 105477), (42, 105504), (61, 105579), (68, 105615), (82, 105690), (83, 105693), (108, 105909), (119, 105984), (122, 105999), (125, 106029), (135, 106125), (142, 106179), (148, 106233),

Gene: Jemmno_197 Start: 104063, Stop: 105106, Start Num: 12

Candidate Starts for Jemmno_197:

(6, 103964), (7, 103979), (Start: 12 @104063 has 174 MA's), (Start: 24 @104150 has 6 MA's), (39, 104306), (42, 104333), (61, 104408), (68, 104444), (82, 104519), (83, 104522), (108, 104738), (119, 104813), (122, 104828), (125, 104858), (135, 104954), (142, 105008), (148, 105062),

Gene: Jessibeth14_199 Start: 106560, Stop: 107603, Start Num: 12

Candidate Starts for Jessibeth14_199:

(6, 106461), (7, 106476), (Start: 12 @106560 has 174 MA's), (Start: 24 @106647 has 6 MA's), (39, 106803), (42, 106830), (61, 106905), (68, 106941), (82, 107016), (83, 107019), (108, 107235), (119, 107310), (122, 107325), (125, 107355), (135, 107451), (142, 107505), (148, 107559),

Gene: Jezreel_196 Start: 105629, Stop: 106672, Start Num: 12

Candidate Starts for Jezreel_196:

(6, 105530), (7, 105545), (Start: 12 @105629 has 174 MA's), (Start: 24 @105716 has 6 MA's), (39, 105872), (42, 105899), (61, 105974), (68, 106010), (82, 106085), (83, 106088), (108, 106304), (119, 106379), (122, 106394), (125, 106424), (135, 106520), (142, 106574), (148, 106628),

Gene: JigglyPuff_205 Start: 107631, Stop: 108674, Start Num: 12

Candidate Starts for JigglyPuff_205:

(6, 107532), (7, 107547), (Start: 12 @107631 has 174 MA's), (Start: 24 @107718 has 6 MA's), (39, 107874), (42, 107901), (61, 107976), (68, 108012), (82, 108087), (83, 108090), (108, 108306), (119, 108381), (122, 108396), (125, 108426), (135, 108522), (142, 108576), (148, 108630),

Gene: JulietS_189 Start: 102352, Stop: 103395, Start Num: 12

Candidate Starts for JulietS_189:

(6, 102253), (7, 102268), (Start: 12 @102352 has 174 MA's), (Start: 24 @102439 has 6 MA's), (39, 102595), (42, 102622), (61, 102697), (68, 102733), (82, 102808), (83, 102811), (108, 103027), (119, 103102), (122, 103117), (125, 103147), (135, 103243), (142, 103297), (148, 103351),

Gene: JustHall_193 Start: 104576, Stop: 105619, Start Num: 12

Candidate Starts for JustHall_193:

(6, 104477), (7, 104492), (Start: 12 @104576 has 174 MA's), (Start: 24 @104663 has 6 MA's), (39, 104819), (42, 104846), (61, 104921), (68, 104957), (82, 105032), (83, 105035), (108, 105251), (119, 105326), (122, 105341), (125, 105371), (135, 105467), (142, 105521), (148, 105575),

Gene: Kamryn_197 Start: 105897, Stop: 106940, Start Num: 12

Candidate Starts for Kamryn_197:

(6, 105798), (7, 105813), (Start: 12 @105897 has 174 MA's), (Start: 24 @105984 has 6 MA's), (39, 106140), (42, 106167), (61, 106242), (68, 106278), (82, 106353), (83, 106356), (108, 106572), (119, 106647), (122, 106662), (125, 106692), (135, 106788), (142, 106842), (148, 106896),

Gene: Kboogie_202 Start: 105234, Stop: 106277, Start Num: 12

Candidate Starts for Kboogie_202:

(6, 105135), (7, 105150), (Start: 12 @105234 has 174 MA's), (Start: 24 @105321 has 6 MA's), (39, 105477), (42, 105504), (61, 105579), (68, 105615), (82, 105690), (83, 105693), (108, 105909), (119, 105984), (122, 105999), (125, 106029), (135, 106125), (142, 106179), (148, 106233),

Gene: Khaleesi_198 Start: 106027, Stop: 107070, Start Num: 12

Candidate Starts for Khaleesi_198:

(6, 105928), (7, 105943), (Start: 12 @106027 has 174 MA's), (Start: 24 @106114 has 6 MA's), (39, 106270), (42, 106297), (61, 106372), (68, 106408), (82, 106483), (83, 106486), (108, 106702), (119, 106777), (122, 106792), (125, 106822), (135, 106918), (142, 106972), (148, 107026),

Gene: Koguma_197 Start: 104578, Stop: 105621, Start Num: 12

Candidate Starts for Koguma_197:

(6, 104479), (7, 104494), (Start: 12 @104578 has 174 MA's), (Start: 24 @104665 has 6 MA's), (39, 104821), (42, 104848), (61, 104923), (68, 104959), (82, 105034), (83, 105037), (108, 105253), (119, 105328), (122, 105343), (125, 105373), (135, 105469), (142, 105523), (148, 105577),

Gene: LRRHood_191 Start: 104923, Stop: 105966, Start Num: 12

Candidate Starts for LRRHood_191:

(6, 104824), (7, 104839), (Start: 12 @104923 has 174 MA's), (Start: 24 @105010 has 6 MA's), (39, 105166), (42, 105193), (61, 105268), (68, 105304), (82, 105379), (83, 105382), (108, 105598), (119, 105673), (122, 105688), (125, 105718), (135, 105814), (142, 105868), (148, 105922),

Gene: Labradorite_196 Start: 103673, Stop: 104716, Start Num: 12

Candidate Starts for Labradorite_196:

(6, 103574), (7, 103589), (Start: 12 @103673 has 174 MA's), (Start: 24 @103760 has 6 MA's), (39, 103916), (42, 103943), (61, 104018), (68, 104054), (82, 104129), (83, 104132), (108, 104348), (119, 104423), (122, 104438), (125, 104468), (135, 104564), (142, 104618), (148, 104672),

Gene: Latch_198 Start: 104471, Stop: 105514, Start Num: 12

Candidate Starts for Latch_198:

(6, 104372), (7, 104387), (Start: 12 @104471 has 174 MA's), (Start: 24 @104558 has 6 MA's), (39, 104714), (42, 104741), (61, 104816), (68, 104852), (82, 104927), (83, 104930), (108, 105146), (119, 105221), (122, 105236), (125, 105266), (135, 105362), (142, 105416), (148, 105470),

Gene: Lee7_199 Start: 107407, Stop: 108450, Start Num: 12

Candidate Starts for Lee7_199:

(6, 107308), (7, 107323), (Start: 12 @107407 has 174 MA's), (Start: 24 @107494 has 6 MA's), (39, 107650), (42, 107677), (61, 107752), (68, 107788), (82, 107863), (83, 107866), (108, 108082), (119, 108157), (122, 108172), (125, 108202), (135, 108298), (142, 108352), (148, 108406),

Gene: Lethe_199 Start: 106670, Stop: 107713, Start Num: 12

Candidate Starts for Lethe_199:

(6, 106571), (7, 106586), (Start: 12 @106670 has 174 MA's), (Start: 24 @106757 has 6 MA's), (39, 106913), (42, 106940), (61, 107015), (68, 107051), (82, 107126), (83, 107129), (108, 107345), (119, 107420), (122, 107435), (125, 107465), (135, 107561), (142, 107615), (148, 107669),

Gene: LifeSavor_197 Start: 104996, Stop: 106039, Start Num: 12

Candidate Starts for LifeSavor_197:

(6, 104897), (7, 104912), (Start: 12 @104996 has 174 MA's), (Start: 24 @105083 has 6 MA's), (39, 105239), (42, 105266), (61, 105341), (68, 105377), (82, 105452), (83, 105455), (108, 105671), (119, 105746), (122, 105761), (125, 105791), (135, 105887), (142, 105941), (148, 105995),

Gene: LinStu_197 Start: 105519, Stop: 106562, Start Num: 12

Candidate Starts for LinStu_197:

(6, 105420), (7, 105435), (Start: 12 @105519 has 174 MA's), (Start: 24 @105606 has 6 MA's), (39, 105762), (42, 105789), (61, 105864), (68, 105900), (82, 105975), (83, 105978), (108, 106194), (119, 106269), (122, 106284), (125, 106314), (135, 106410), (142, 106464), (148, 106518),

Gene: Littleton_201 Start: 105708, Stop: 106751, Start Num: 12

Candidate Starts for Littleton_201:

(6, 105609), (7, 105624), (Start: 12 @105708 has 174 MA's), (Start: 24 @105795 has 6 MA's), (39, 105951), (42, 105978), (61, 106053), (68, 106089), (82, 106164), (83, 106167), (108, 106383), (119, 106458), (122, 106473), (125, 106503), (135, 106599), (142, 106653), (148, 106707),

Gene: Loanshark_196 Start: 105342, Stop: 106385, Start Num: 12

Candidate Starts for Loanshark_196:

(6, 105243), (7, 105258), (Start: 12 @105342 has 174 MA's), (Start: 24 @105429 has 6 MA's), (39, 105585), (42, 105612), (61, 105687), (68, 105723), (82, 105798), (83, 105801), (108, 106017), (119, 106092), (122, 106107), (125, 106137), (135, 106233), (142, 106287), (148, 106341),

Gene: LolaVinca_196 Start: 106265, Stop: 107308, Start Num: 12

Candidate Starts for LolaVinca_196:

(6, 106166), (7, 106181), (Start: 12 @106265 has 174 MA's), (Start: 24 @106352 has 6 MA's), (39, 106508), (42, 106535), (61, 106610), (68, 106646), (82, 106721), (83, 106724), (108, 106940), (119, 107015), (122, 107030), (125, 107060), (135, 107156), (142, 107210), (148, 107264),

Gene: LookingGlass_197 Start: 105225, Stop: 106268, Start Num: 12

Candidate Starts for LookingGlass_197:

(6, 105126), (7, 105141), (Start: 12 @105225 has 174 MA's), (Start: 24 @105312 has 6 MA's), (39, 105468), (42, 105495), (61, 105570), (68, 105606), (82, 105681), (83, 105684), (108, 105900), (119, 105975), (122, 105990), (125, 106020), (135, 106116), (142, 106170), (148, 106224),

Gene: LordLeafolot_199 Start: 105877, Stop: 106920, Start Num: 12

Candidate Starts for LordLeafolot_199:

(6, 105778), (7, 105793), (Start: 12 @105877 has 174 MA's), (Start: 24 @105964 has 6 MA's), (39, 106120), (42, 106147), (61, 106222), (68, 106258), (82, 106333), (83, 106336), (108, 106552), (119, 106627), (122, 106642), (125, 106672), (135, 106768), (142, 106822), (148, 106876),

Gene: Lukilu_189 Start: 105933, Stop: 106976, Start Num: 12

Candidate Starts for Lukilu_189:

(6, 105834), (7, 105849), (Start: 12 @105933 has 174 MA's), (Start: 24 @106020 has 6 MA's), (39, 106176), (42, 106203), (61, 106278), (68, 106314), (82, 106389), (83, 106392), (108, 106608), (119, 106683), (122, 106698), (125, 106728), (135, 106824), (142, 106878), (148, 106932),

Gene: Lunareta_197 Start: 106878, Stop: 107921, Start Num: 12

Candidate Starts for Lunareta_197:

(6, 106779), (7, 106794), (Start: 12 @106878 has 174 MA's), (Start: 24 @106965 has 6 MA's), (39, 107121), (42, 107148), (61, 107223), (68, 107259), (82, 107334), (83, 107337), (108, 107553), (119, 107628), (122, 107643), (125, 107673), (135, 107769), (142, 107823), (148, 107877),

Gene: Maby2021_198 Start: 106471, Stop: 107514, Start Num: 12

Candidate Starts for Maby2021_198:

(6, 106372), (7, 106387), (Start: 12 @106471 has 174 MA's), (Start: 24 @106558 has 6 MA's), (39, 106714), (42, 106741), (61, 106816), (68, 106852), (82, 106927), (83, 106930), (108, 107146), (119, 107221), (122, 107236), (125, 107266), (135, 107362), (142, 107416), (148, 107470),

Gene: Mangeria_199 Start: 106264, Stop: 107307, Start Num: 12

Candidate Starts for Mangeria_199:

(6, 106165), (7, 106180), (Start: 12 @106264 has 174 MA's), (Start: 24 @106351 has 6 MA's), (39, 106507), (42, 106534), (61, 106609), (68, 106645), (82, 106720), (83, 106723), (108, 106939), (119, 107014), (122, 107029), (125, 107059), (127, 107080), (135, 107155), (142, 107209), (148, 107263),

Gene: Matsumoto_197 Start: 105222, Stop: 106265, Start Num: 12

Candidate Starts for Matsumoto_197:

(6, 105123), (7, 105138), (Start: 12 @105222 has 174 MA's), (Start: 24 @105309 has 6 MA's), (39, 105465), (42, 105492), (61, 105567), (68, 105603), (82, 105678), (83, 105681), (108, 105897), (119, 105972), (122, 105987), (125, 106017), (135, 106113), (142, 106167), (148, 106221),

Gene: Maturis_196 Start: 105734, Stop: 106777, Start Num: 12

Candidate Starts for Maturis_196:

(6, 105635), (7, 105650), (Start: 12 @105734 has 174 MA's), (Start: 24 @105821 has 6 MA's), (39, 105977), (42, 106004), (61, 106079), (68, 106115), (82, 106190), (83, 106193), (108, 106409), (119, 106484), (122, 106499), (125, 106529), (135, 106625), (142, 106679), (148, 106733),

Gene: McGee_198 Start: 104416, Stop: 105459, Start Num: 12

Candidate Starts for McGee_198:

(6, 104317), (7, 104332), (Start: 12 @104416 has 174 MA's), (Start: 24 @104503 has 6 MA's), (39, 104659), (42, 104686), (61, 104761), (68, 104797), (82, 104872), (83, 104875), (108, 105091), (119, 105166), (122, 105181), (125, 105211), (135, 105307), (142, 105361), (148, 105415),

Gene: McWolfish_196 Start: 105238, Stop: 106281, Start Num: 12

Candidate Starts for McWolfish_196:

(6, 105139), (7, 105154), (Start: 12 @105238 has 174 MA's), (Start: 24 @105325 has 6 MA's), (39, 105481), (42, 105508), (61, 105583), (68, 105619), (82, 105694), (83, 105697), (108, 105913), (119, 105988), (122, 106003), (125, 106033), (135, 106129), (142, 106183), (148, 106237),

Gene: Megamind_196 Start: 105529, Stop: 106572, Start Num: 12

Candidate Starts for Megamind_196:

(6, 105430), (7, 105445), (Start: 12 @105529 has 174 MA's), (Start: 24 @105616 has 6 MA's), (39, 105772), (42, 105799), (61, 105874), (68, 105910), (82, 105985), (83, 105988), (108, 106204), (119, 106279), (122, 106294), (125, 106324), (135, 106420), (142, 106474), (148, 106528),

Gene: Melpomini_193 Start: 104005, Stop: 105048, Start Num: 12

Candidate Starts for Melpomini_193:

(6, 103906), (7, 103921), (Start: 12 @104005 has 174 MA's), (Start: 24 @104092 has 6 MA's), (39, 104248), (42, 104275), (61, 104350), (68, 104386), (82, 104461), (83, 104464), (108, 104680), (119, 104755), (122, 104770), (125, 104800), (135, 104896), (142, 104950), (148, 105004),

Gene: MikeLiesIn_200 Start: 106665, Stop: 107708, Start Num: 12

Candidate Starts for MikeLiesIn_200:

(6, 106566), (7, 106581), (Start: 12 @106665 has 174 MA's), (Start: 24 @106752 has 6 MA's), (39, 106908), (42, 106935), (61, 107010), (68, 107046), (82, 107121), (83, 107124), (108, 107340), (119, 107415), (122, 107430), (125, 107460), (135, 107556), (142, 107610), (148, 107664),

Gene: Mikro_194 Start: 106905, Stop: 107948, Start Num: 12

Candidate Starts for Mikro_194:

(6, 106806), (7, 106821), (Start: 12 @106905 has 174 MA's), (Start: 24 @106992 has 6 MA's), (39, 107148), (42, 107175), (61, 107250), (68, 107286), (82, 107361), (83, 107364), (108, 107580), (119, 107655), (122, 107670), (125, 107700), (135, 107796), (142, 107850), (148, 107904),

Gene: MoMoMixon_196 Start: 105395, Stop: 106438, Start Num: 12

Candidate Starts for MoMoMixon_196:

(7, 105311), (Start: 12 @105395 has 174 MA's), (Start: 24 @105482 has 6 MA's), (39, 105638), (42, 105665), (61, 105740), (68, 105776), (82, 105851), (83, 105854), (108, 106070), (119, 106145), (122, 106160), (125, 106190), (135, 106286), (142, 106340), (148, 106394),

Gene: Moby_195 Start: 104679, Stop: 105722, Start Num: 12

Candidate Starts for Moby_195:

(6, 104580), (7, 104595), (Start: 12 @104679 has 174 MA's), (Start: 24 @104766 has 6 MA's), (39, 104922), (42, 104949), (61, 105024), (68, 105060), (82, 105135), (83, 105138), (108, 105354), (119, 105429), (122, 105444), (125, 105474), (135, 105570), (142, 105624), (148, 105678),

Gene: Moiqah_194 Start: 104656, Stop: 105699, Start Num: 12

Candidate Starts for Moiqah_194:

(6, 104557), (7, 104572), (Start: 12 @104656 has 174 MA's), (Start: 24 @104743 has 6 MA's), (39, 104899), (42, 104926), (61, 105001), (68, 105037), (82, 105112), (83, 105115), (108, 105331), (119, 105406), (122, 105421), (125, 105451), (135, 105547), (142, 105601), (148, 105655),

Gene: Momo_199 Start: 104471, Stop: 105514, Start Num: 12

Candidate Starts for Momo_199:

(6, 104372), (7, 104387), (Start: 12 @104471 has 174 MA's), (Start: 24 @104558 has 6 MA's), (39, 104714), (42, 104741), (61, 104816), (68, 104852), (82, 104927), (83, 104930), (108, 105146), (119, 105221), (122, 105236), (125, 105266), (135, 105362), (142, 105416), (148, 105470),

Gene: Montpel_197 Start: 106876, Stop: 107919, Start Num: 12

Candidate Starts for Montpel_197:

(6, 106777), (7, 106792), (Start: 12 @106876 has 174 MA's), (Start: 24 @106963 has 6 MA's), (39, 107119), (42, 107146), (61, 107221), (68, 107257), (82, 107332), (83, 107335), (108, 107551), (119, 107626), (122, 107641), (125, 107671), (135, 107767), (142, 107821), (148, 107875),

Gene: Morizzled23_196 Start: 104147, Stop: 105190, Start Num: 12

Candidate Starts for Morizzled23_196:

(6, 104048), (7, 104063), (Start: 12 @104147 has 174 MA's), (Start: 24 @104234 has 6 MA's), (39, 104390), (42, 104417), (61, 104492), (68, 104528), (82, 104603), (83, 104606), (108, 104822), (119, 104897), (122, 104912), (125, 104942), (135, 105038), (142, 105092), (148, 105146),

Gene: Myrna_183 Start: 102308, Stop: 103435, Start Num: 11

Candidate Starts for Myrna_183:

(Start: 11 @102308 has 3 MA's), (18, 102353), (19, 102356), (22, 102389), (Start: 24 @102398 has 6 MA's), (30, 102443), (42, 102581), (46, 102590), (66, 102692), (67, 102698), (70, 102728), (76,

102761), (79, 102785), (83, 102833), (87, 102872), (88, 102875), (89, 102881), (93, 102920), (98, 102965), (101, 103004), (102, 103007), (109, 103076), (112, 103100), (117, 103127), (137, 103301), (144, 103337),

Gene: Naija_199 Start: 105174, Stop: 106217, Start Num: 12

Candidate Starts for Naija_199:

(6, 105075), (7, 105090), (Start: 12 @105174 has 174 MA's), (Start: 24 @105261 has 6 MA's), (39, 105417), (42, 105444), (61, 105519), (68, 105555), (82, 105630), (83, 105633), (108, 105849), (119, 105924), (122, 105939), (125, 105969), (135, 106065), (142, 106119), (148, 106173),

Gene: Napoleon13_196 Start: 104511, Stop: 105554, Start Num: 12

Candidate Starts for Napoleon13_196:

(6, 104412), (7, 104427), (Start: 12 @104511 has 174 MA's), (Start: 24 @104598 has 6 MA's), (39, 104754), (42, 104781), (61, 104856), (68, 104892), (82, 104967), (83, 104970), (108, 105186), (119, 105261), (122, 105276), (125, 105306), (135, 105402), (142, 105456), (148, 105510),

Gene: Nappy_199 Start: 106867, Stop: 107910, Start Num: 12

Candidate Starts for Nappy_199:

(6, 106768), (7, 106783), (Start: 12 @106867 has 174 MA's), (Start: 24 @106954 has 6 MA's), (39, 107110), (42, 107137), (61, 107212), (68, 107248), (82, 107323), (83, 107326), (108, 107542), (119, 107617), (122, 107632), (125, 107662), (135, 107758), (142, 107812), (148, 107866),

Gene: Naval22_206 Start: 107260, Stop: 108303, Start Num: 12

Candidate Starts for Naval22_206:

(6, 107161), (7, 107176), (Start: 12 @107260 has 174 MA's), (Start: 24 @107347 has 6 MA's), (39, 107503), (42, 107530), (61, 107605), (68, 107641), (82, 107716), (83, 107719), (108, 107935), (119, 108010), (122, 108025), (125, 108055), (135, 108151), (142, 108205), (148, 108259),

Gene: NedWong_198 Start: 105916, Stop: 106959, Start Num: 12

Candidate Starts for NedWong_198:

(6, 105817), (7, 105832), (Start: 12 @105916 has 174 MA's), (Start: 24 @106003 has 6 MA's), (39, 106159), (42, 106186), (61, 106261), (68, 106297), (82, 106372), (83, 106375), (108, 106591), (119, 106666), (122, 106681), (125, 106711), (135, 106807), (142, 106861), (148, 106915),

Gene: Ngannou_195 Start: 103453, Stop: 104496, Start Num: 12

Candidate Starts for Ngannou_195:

(6, 103354), (7, 103369), (Start: 12 @103453 has 174 MA's), (Start: 24 @103540 has 6 MA's), (39, 103696), (42, 103723), (61, 103798), (68, 103834), (82, 103909), (83, 103912), (108, 104128), (119, 104203), (122, 104218), (125, 104248), (135, 104344), (142, 104398), (148, 104452),

Gene: Nidhogg_200 Start: 106309, Stop: 107352, Start Num: 12

Candidate Starts for Nidhogg_200:

(6, 106210), (7, 106225), (Start: 12 @106309 has 174 MA's), (Start: 24 @106396 has 6 MA's), (39, 106552), (42, 106579), (61, 106654), (68, 106690), (82, 106765), (83, 106768), (108, 106984), (119, 107059), (122, 107074), (125, 107104), (135, 107200), (142, 107254), (148, 107308),

Gene: NoodleTree_205 Start: 106216, Stop: 107259, Start Num: 12

Candidate Starts for NoodleTree_205:

(6, 106117), (7, 106132), (Start: 12 @106216 has 174 MA's), (Start: 24 @106303 has 6 MA's), (39, 106459), (42, 106486), (61, 106561), (68, 106597), (82, 106672), (83, 106675), (108, 106891), (119, 106966), (122, 106981), (125, 107011), (135, 107107), (142, 107161), (148, 107215),

Gene: Norm_198 Start: 105909, Stop: 106952, Start Num: 12

Candidate Starts for Norm_198:

(6, 105810), (7, 105825), (Start: 12 @105909 has 174 MA's), (Start: 24 @105996 has 6 MA's), (39, 106152), (42, 106179), (61, 106254), (68, 106290), (82, 106365), (83, 106368), (108, 106584), (119, 106659), (122, 106674), (125, 106704), (135, 106800), (142, 106854), (148, 106908),

Gene: NuevoMundo_201 Start: 107461, Stop: 108504, Start Num: 12

Candidate Starts for NuevoMundo_201:

(6, 107362), (7, 107377), (Start: 12 @107461 has 174 MA's), (Start: 24 @107548 has 6 MA's), (39, 107704), (42, 107731), (61, 107806), (68, 107842), (82, 107917), (83, 107920), (108, 108136), (119, 108211), (122, 108226), (125, 108256), (135, 108352), (142, 108406), (148, 108460),

Gene: OrediggerDelux_195 Start: 106448, Stop: 107491, Start Num: 12

Candidate Starts for OrediggerDelux_195:

(6, 106349), (7, 106364), (Start: 12 @106448 has 174 MA's), (Start: 24 @106535 has 6 MA's), (39, 106691), (42, 106718), (61, 106793), (68, 106829), (82, 106904), (83, 106907), (108, 107123), (119, 107198), (122, 107213), (125, 107243), (135, 107339), (142, 107393), (148, 107447),

Gene: ParkTD_197 Start: 105780, Stop: 106823, Start Num: 12

Candidate Starts for ParkTD_197:

(6, 105681), (7, 105696), (Start: 12 @105780 has 174 MA's), (Start: 24 @105867 has 6 MA's), (39, 106023), (42, 106050), (61, 106125), (68, 106161), (82, 106236), (83, 106239), (108, 106455), (119, 106530), (122, 106545), (125, 106575), (135, 106671), (142, 106725), (148, 106779),

Gene: Patter_199 Start: 104485, Stop: 105528, Start Num: 12

Candidate Starts for Patter_199:

(6, 104386), (7, 104401), (Start: 12 @104485 has 174 MA's), (Start: 24 @104572 has 6 MA's), (39, 104728), (42, 104755), (61, 104830), (68, 104866), (82, 104941), (83, 104944), (108, 105160), (119, 105235), (122, 105250), (125, 105280), (135, 105376), (142, 105430), (148, 105484),

Gene: Phabba_193 Start: 102216, Stop: 103343, Start Num: 11

Candidate Starts for Phabba_193:

(Start: 11 @102216 has 3 MA's), (18, 102261), (19, 102264), (22, 102297), (36, 102426), (42, 102489), (46, 102498), (62, 102567), (67, 102606), (68, 102624), (70, 102636), (79, 102693), (83, 102741), (88, 102783), (94, 102852), (98, 102873), (101, 102912), (102, 102915), (109, 102984), (112, 103008), (137, 103209), (144, 103245),

Gene: PharkleMinkus_200 Start: 105028, Stop: 106071, Start Num: 12

Candidate Starts for PharkleMinkus_200:

(6, 104929), (7, 104944), (Start: 12 @105028 has 174 MA's), (Start: 24 @105115 has 6 MA's), (39, 105271), (42, 105298), (61, 105373), (68, 105409), (82, 105484), (83, 105487), (108, 105703), (119, 105778), (122, 105793), (125, 105823), (135, 105919), (142, 105973), (148, 106027),

Gene: Phlegm_202 Start: 105174, Stop: 106217, Start Num: 12

Candidate Starts for Phlegm_202:

(6, 105075), (7, 105090), (Start: 12 @105174 has 174 MA's), (Start: 24 @105261 has 6 MA's), (39, 105417), (42, 105444), (61, 105519), (68, 105555), (82, 105630), (83, 105633), (108, 105849), (119, 105924), (122, 105939), (125, 105969), (135, 106065), (142, 106119), (148, 106173),

Gene: Phox_199 Start: 106129, Stop: 107172, Start Num: 12

Candidate Starts for Phox_199:

(6, 106030), (7, 106045), (Start: 12 @106129 has 174 MA's), (Start: 24 @106216 has 6 MA's), (39, 106372), (42, 106399), (61, 106474), (68, 106510), (82, 106585), (83, 106588), (108, 106804), (119, 106879), (122, 106894), (125, 106924), (135, 107020), (142, 107074), (148, 107128),

Gene: Phrappuccino_106 Start: 78400, Stop: 79317, Start Num: 25

Candidate Starts for Phrappuccino_106:

(Start: 25 @78400 has 2 MA's), (32, 78451), (37, 78511), (39, 78535), (73, 78685), (81, 78742), (85, 78784), (93, 78838), (95, 78868), (102, 78919), (108, 78961), (114, 79003), (119, 79036), (120, 79045), (123, 79057), (132, 79138), (141, 79213), (145, 79246), (146, 79249), (147, 79267), (150, 79297),

Gene: Phusco_197 Start: 104315, Stop: 105358, Start Num: 12

Candidate Starts for Phusco_197:

(6, 104216), (7, 104231), (Start: 12 @104315 has 174 MA's), (Start: 24 @104402 has 6 MA's), (39, 104558), (42, 104585), (61, 104660), (68, 104696), (82, 104771), (83, 104774), (108, 104990), (119, 105065), (122, 105080), (125, 105110), (135, 105206), (142, 105260), (148, 105314),

Gene: Pier_199 Start: 107003, Stop: 108046, Start Num: 12

Candidate Starts for Pier_199:

(6, 106904), (7, 106919), (Start: 12 @107003 has 174 MA's), (Start: 24 @107090 has 6 MA's), (39, 107246), (42, 107273), (61, 107348), (68, 107384), (82, 107459), (83, 107462), (108, 107678), (119, 107753), (122, 107768), (125, 107798), (135, 107894), (142, 107948), (148, 108002),

Gene: Pinkcreek_183 Start: 104691, Stop: 105734, Start Num: 12

Candidate Starts for Pinkcreek_183:

(6, 104592), (7, 104607), (Start: 12 @104691 has 174 MA's), (Start: 24 @104778 has 6 MA's), (39, 104934), (42, 104961), (61, 105036), (68, 105072), (82, 105147), (83, 105150), (108, 105366), (119, 105441), (122, 105456), (125, 105486), (135, 105582), (142, 105636), (148, 105690),

Gene: Pio_206 Start: 108198, Stop: 109241, Start Num: 12

Candidate Starts for Pio_206:

(6, 108099), (7, 108114), (Start: 12 @108198 has 174 MA's), (Start: 24 @108285 has 6 MA's), (39, 108441), (42, 108468), (61, 108543), (68, 108579), (82, 108654), (83, 108657), (108, 108873), (119, 108948), (122, 108963), (125, 108993), (135, 109089), (142, 109143), (148, 109197),

Gene: Pivoine_199 Start: 105174, Stop: 106217, Start Num: 12

Candidate Starts for Pivoine_199:

(6, 105075), (7, 105090), (Start: 12 @105174 has 174 MA's), (Start: 24 @105261 has 6 MA's), (39, 105417), (42, 105444), (61, 105519), (68, 105555), (82, 105630), (83, 105633), (108, 105849), (119, 105924), (122, 105939), (125, 105969), (135, 106065), (142, 106119), (148, 106173),

Gene: Pleione_203 Start: 106258, Stop: 107301, Start Num: 12

Candidate Starts for Pleione_203:

(6, 106159), (7, 106174), (Start: 12 @106258 has 174 MA's), (Start: 24 @106345 has 6 MA's), (39, 106501), (42, 106528), (61, 106603), (68, 106639), (82, 106714), (83, 106717), (108, 106933), (119, 107008), (122, 107023), (125, 107053), (135, 107149), (142, 107203), (148, 107257),

Gene: Primadonna_193 Start: 104835, Stop: 105878, Start Num: 12

Candidate Starts for Primadonna_193:

(6, 104736), (7, 104751), (Start: 12 @104835 has 174 MA's), (Start: 24 @104922 has 6 MA's), (39, 105078), (42, 105105), (61, 105180), (68, 105216), (82, 105291), (83, 105294), (108, 105510), (119, 105585), (122, 105600), (125, 105630), (127, 105651), (135, 105726), (142, 105780), (148, 105834),

Gene: Pupper_144 Start: 99464, Stop: 100639, Start Num: 14

Candidate Starts for Pupper_144:

(2, 99344), (8, 99383), (Start: 14 @99464 has 4 MA's), (35, 99644), (38, 99683), (47, 99749), (54, 99803), (77, 99959), (79, 99998), (88, 100088), (101, 100220), (102, 100223), (103, 100241), (109, 100283), (128, 100433), (131, 100448), (132, 100451), (143, 100541), (149, 100595),

Gene: Pupusa_202 Start: 106503, Stop: 107546, Start Num: 12

Candidate Starts for Pupusa_202:

(6, 106404), (7, 106419), (Start: 12 @106503 has 174 MA's), (Start: 24 @106590 has 6 MA's), (39, 106746), (42, 106773), (61, 106848), (68, 106884), (82, 106959), (83, 106962), (108, 107178), (119, 107253), (122, 107268), (125, 107298), (135, 107394), (142, 107448), (148, 107502),

Gene: PurduePete_199 Start: 106486, Stop: 107529, Start Num: 12

Candidate Starts for PurduePete_199:

(6, 106387), (7, 106402), (Start: 12 @106486 has 174 MA's), (Start: 24 @106573 has 6 MA's), (39, 106729), (42, 106756), (61, 106831), (68, 106867), (82, 106942), (83, 106945), (108, 107161), (119, 107236), (122, 107251), (125, 107281), (135, 107377), (142, 107431), (148, 107485),

Gene: QBert_190 Start: 104530, Stop: 105573, Start Num: 12

Candidate Starts for QBert_190:

(6, 104431), (7, 104446), (Start: 12 @104530 has 174 MA's), (Start: 24 @104617 has 6 MA's), (39, 104773), (42, 104800), (61, 104875), (68, 104911), (82, 104986), (83, 104989), (108, 105205), (119, 105280), (122, 105295), (125, 105325), (135, 105421), (142, 105475), (148, 105529),

Gene: Quasimodo_201 Start: 106109, Stop: 107152, Start Num: 12

Candidate Starts for Quasimodo_201:

(6, 106010), (7, 106025), (Start: 12 @106109 has 174 MA's), (Start: 24 @106196 has 6 MA's), (39, 106352), (42, 106379), (61, 106454), (68, 106490), (82, 106565), (83, 106568), (108, 106784), (119, 106859), (122, 106874), (125, 106904), (135, 107000), (142, 107054), (148, 107108),

Gene: Rabinovish_192 Start: 106384, Stop: 107427, Start Num: 12

Candidate Starts for Rabinovish_192:

(6, 106285), (7, 106300), (Start: 12 @106384 has 174 MA's), (Start: 24 @106471 has 6 MA's), (39, 106627), (42, 106654), (61, 106729), (68, 106765), (82, 106840), (83, 106843), (108, 107059), (119, 107134), (122, 107149), (125, 107179), (135, 107275), (142, 107329), (148, 107383),

Gene: Rahel_199 Start: 104909, Stop: 105952, Start Num: 12

Candidate Starts for Rahel_199:

(6, 104810), (7, 104825), (Start: 12 @104909 has 174 MA's), (Start: 24 @104996 has 6 MA's), (39, 105152), (42, 105179), (61, 105254), (68, 105290), (82, 105365), (83, 105368), (108, 105584), (119, 105659), (122, 105674), (125, 105704), (135, 105800), (142, 105854), (148, 105908),

Gene: RedWattleHog_70 Start: 64415, Stop: 65479, Start Num: 15

Candidate Starts for RedWattleHog_70:

(Start: 15 @64415 has 2 MA's), (20, 64475), (29, 64532), (35, 64583), (36, 64610), (38, 64622), (48, 64688), (51, 64706), (60, 64769), (64, 64793), (78, 64880), (81, 64919), (84, 64943), (90, 64991), (91, 65000), (93, 65021), (97, 65054), (99, 65081), (115, 65192), (118, 65216), (121, 65228), (128, 65285), (134, 65333), (136, 65357), (147, 65423), (149, 65444),

Gene: Rizal_191 Start: 103823, Stop: 104779, Start Num: 24

Candidate Starts for Rizal_191:

(6, 103637), (7, 103652), (Start: 12 @103736 has 174 MA's), (Start: 24 @103823 has 6 MA's), (39, 103979), (42, 104006), (61, 104081), (68, 104117), (82, 104192), (83, 104195), (108, 104411), (119, 104486), (122, 104501), (125, 104531), (135, 104627), (142, 104681), (148, 104735),

Gene: RoMag_193 Start: 105220, Stop: 106263, Start Num: 12

Candidate Starts for RoMag_193:

(6, 105121), (7, 105136), (Start: 12 @105220 has 174 MA's), (Start: 24 @105307 has 6 MA's), (39, 105463), (42, 105490), (61, 105565), (68, 105601), (82, 105676), (83, 105679), (108, 105895), (119, 105970), (122, 105985), (125, 106015), (135, 106111), (142, 106165), (148, 106219),

Gene: Rocha_196 Start: 104971, Stop: 106014, Start Num: 12

Candidate Starts for Rocha_196:

(6, 104872), (7, 104887), (Start: 12 @104971 has 174 MA's), (Start: 24 @105058 has 6 MA's), (39, 105214), (42, 105241), (61, 105316), (68, 105352), (82, 105427), (83, 105430), (108, 105646), (119, 105721), (122, 105736), (125, 105766), (135, 105862), (142, 105916), (148, 105970),

Gene: Ronan_194 Start: 103612, Stop: 104655, Start Num: 12

Candidate Starts for Ronan_194:

(6, 103513), (7, 103528), (Start: 12 @103612 has 174 MA's), (Start: 24 @103699 has 6 MA's), (39, 103855), (42, 103882), (61, 103957), (68, 103993), (82, 104068), (83, 104071), (108, 104287), (119, 104362), (122, 104377), (125, 104407), (135, 104503), (142, 104557), (148, 104611),

Gene: Roots515_201 Start: 107037, Stop: 108080, Start Num: 12

Candidate Starts for Roots515_201:

(6, 106938), (7, 106953), (Start: 12 @107037 has 174 MA's), (Start: 24 @107124 has 6 MA's), (39, 107280), (42, 107307), (61, 107382), (68, 107418), (82, 107493), (83, 107496), (108, 107712), (119, 107787), (122, 107802), (125, 107832), (135, 107928), (142, 107982), (148, 108036),

Gene: SCentae_143 Start: 99615, Stop: 100790, Start Num: 14

Candidate Starts for SCentae_143:

(1, 99291), (2, 99495), (8, 99534), (Start: 14 @99615 has 4 MA's), (35, 99795), (38, 99834), (47, 99900), (54, 99954), (77, 100110), (79, 100149), (88, 100239), (101, 100371), (102, 100374), (103, 100392), (109, 100434), (128, 100584), (131, 100599), (132, 100602), (143, 100692), (149, 100746),

Gene: SVoro_194 Start: 105521, Stop: 106564, Start Num: 12

Candidate Starts for SVoro_194:

(6, 105422), (7, 105437), (Start: 12 @105521 has 174 MA's), (Start: 24 @105608 has 6 MA's), (39, 105764), (42, 105791), (61, 105866), (68, 105902), (82, 105977), (83, 105980), (108, 106196), (119, 106271), (122, 106286), (125, 106316), (135, 106412), (142, 106466), (148, 106520),

Gene: Salacia_198 Start: 105312, Stop: 106355, Start Num: 12

Candidate Starts for Salacia_198:

(6, 105213), (7, 105228), (Start: 12 @105312 has 174 MA's), (Start: 24 @105399 has 6 MA's), (39, 105555), (42, 105582), (61, 105657), (68, 105693), (82, 105768), (83, 105771), (108, 105987), (119, 106062), (122, 106077), (125, 106107), (135, 106203), (142, 106257), (148, 106311),

Gene: Sauce_194 Start: 104126, Stop: 105169, Start Num: 12

Candidate Starts for Sauce_194:

(6, 104027), (7, 104042), (Start: 12 @104126 has 174 MA's), (Start: 24 @104213 has 6 MA's), (39, 104369), (42, 104396), (61, 104471), (68, 104507), (82, 104582), (83, 104585), (108, 104801), (119, 104876), (122, 104891), (125, 104921), (135, 105017), (142, 105071), (148, 105125),

Gene: ScoobyDoobyDoo_179 Start: 98925, Stop: 100013, Start Num: 11

Candidate Starts for ScoobyDoobyDoo_179:

(10, 98913), (Start: 11 @98925 has 3 MA's), (35, 99114), (50, 99231), (68, 99318), (72, 99330), (74, 99348), (88, 99450), (101, 99579), (102, 99582), (106, 99612), (117, 99705), (119, 99714), (133, 99843), (134, 99852), (138, 99882), (143, 99912), (148, 99963), (152, 99990),

Gene: ScottMcG_192 Start: 104242, Stop: 105285, Start Num: 12

Candidate Starts for ScottMcG_192:

(6, 104143), (7, 104158), (Start: 12 @104242 has 174 MA's), (Start: 24 @104329 has 6 MA's), (39, 104485), (42, 104512), (61, 104587), (68, 104623), (82, 104698), (83, 104701), (108, 104917), (119, 104992), (122, 105007), (125, 105037), (135, 105133), (142, 105187), (148, 105241),

Gene: Sebata_200 Start: 106944, Stop: 107987, Start Num: 12

Candidate Starts for Sebata_200:

(6, 106845), (7, 106860), (Start: 12 @106944 has 174 MA's), (Start: 24 @107031 has 6 MA's), (39, 107187), (42, 107214), (61, 107289), (68, 107325), (82, 107400), (83, 107403), (108, 107619), (119, 107694), (122, 107709), (125, 107739), (135, 107835), (142, 107889), (148, 107943),

Gene: Settecandela_106 Start: 78400, Stop: 79317, Start Num: 25

Candidate Starts for Settecandela_106:

(Start: 25 @78400 has 2 MA's), (32, 78451), (37, 78511), (39, 78535), (73, 78685), (81, 78742), (85, 78784), (93, 78838), (95, 78868), (102, 78919), (108, 78961), (114, 79003), (119, 79036), (120, 79045), (123, 79057), (132, 79138), (141, 79213), (145, 79246), (146, 79249), (147, 79267), (150, 79297),

Gene: Shaqnato_190 Start: 104652, Stop: 105695, Start Num: 12

Candidate Starts for Shaqnato_190:

(6, 104553), (7, 104568), (Start: 12 @104652 has 174 MA's), (Start: 24 @104739 has 6 MA's), (39, 104895), (42, 104922), (61, 104997), (68, 105033), (82, 105108), (83, 105111), (108, 105327), (119, 105402), (122, 105417), (125, 105447), (135, 105543), (142, 105597), (148, 105651),

Gene: Shelob_200 Start: 107392, Stop: 108435, Start Num: 12

Candidate Starts for Shelob_200:

(6, 107293), (7, 107308), (Start: 12 @107392 has 174 MA's), (Start: 24 @107479 has 6 MA's), (39, 107635), (42, 107662), (61, 107737), (68, 107773), (82, 107848), (83, 107851), (108, 108067), (119, 108142), (122, 108157), (135, 108283), (142, 108337), (148, 108391),

Gene: ShiaLabeouf_195 Start: 104117, Stop: 105160, Start Num: 12

Candidate Starts for ShiaLabeouf_195:

(6, 104018), (7, 104033), (Start: 12 @104117 has 174 MA's), (Start: 24 @104204 has 6 MA's), (39, 104360), (42, 104387), (61, 104462), (68, 104498), (82, 104573), (83, 104576), (108, 104792), (119, 104867), (122, 104882), (125, 104912), (135, 105008), (142, 105062), (148, 105116),

Gene: Shnickers_196 Start: 104181, Stop: 105224, Start Num: 12

Candidate Starts for Shnickers_196:

(6, 104082), (7, 104097), (Start: 12 @104181 has 174 MA's), (Start: 24 @104268 has 6 MA's), (39, 104424), (42, 104451), (61, 104526), (68, 104562), (82, 104637), (83, 104640), (108, 104856), (119, 104931), (122, 104946), (125, 104976), (135, 105072), (142, 105126), (148, 105180),

Gene: Shrimp_200 Start: 106238, Stop: 107281, Start Num: 12

Candidate Starts for Shrimp_200:

(6, 106139), (7, 106154), (Start: 12 @106238 has 174 MA's), (Start: 24 @106325 has 6 MA's), (39, 106481), (42, 106508), (61, 106583), (68, 106619), (82, 106694), (83, 106697), (108, 106913), (119, 106988), (122, 107003), (125, 107033), (135, 107129), (142, 107183), (148, 107237),

Gene: SilverDipper_202 Start: 105730, Stop: 106773, Start Num: 12

Candidate Starts for SilverDipper_202:

(6, 105631), (7, 105646), (Start: 12 @105730 has 174 MA's), (Start: 24 @105817 has 6 MA's), (39, 105973), (42, 106000), (61, 106075), (68, 106111), (82, 106186), (83, 106189), (108, 106405), (119, 106480), (122, 106495), (125, 106525), (135, 106621), (142, 106675), (148, 106729),

Gene: Skog_204 Start: 128821, Stop: 130023, Start Num: 14

Candidate Starts for Skog_204:

(1, 128491), (2, 128695), (Start: 14 @128821 has 4 MA's), (31, 128959), (34, 128998), (35, 129001), (38, 129040), (40, 129076), (47, 129106), (54, 129160), (77, 129316), (79, 129355), (88, 129445), (94, 129517), (109, 129640), (112, 129664), (125, 129745), (131, 129805), (132, 129808), (134, 129838), (143, 129898), (148, 129949), (149, 129952), (150, 129961), (151, 129967),

Gene: SmallFry_198 Start: 104275, Stop: 105318, Start Num: 12

Candidate Starts for SmallFry_198:

(6, 104176), (7, 104191), (Start: 12 @104275 has 174 MA's), (Start: 24 @104362 has 6 MA's), (39, 104518), (42, 104545), (61, 104620), (68, 104656), (82, 104731), (83, 104734), (108, 104950), (119, 105025), (122, 105040), (125, 105070), (135, 105166), (142, 105220), (148, 105274),

Gene: SoilZilla_194 Start: 105137, Stop: 106180, Start Num: 12

Candidate Starts for SoilZilla_194:

(6, 105038), (7, 105053), (Start: 12 @105137 has 174 MA's), (Start: 24 @105224 has 6 MA's), (39, 105380), (42, 105407), (61, 105482), (68, 105518), (82, 105593), (83, 105596), (108, 105812), (119, 105887), (122, 105902), (125, 105932), (135, 106028), (142, 106082), (148, 106136),

Gene: Spec_193 Start: 104466, Stop: 105509, Start Num: 12

Candidate Starts for Spec_193:

(6, 104367), (7, 104382), (Start: 12 @104466 has 174 MA's), (Start: 24 @104553 has 6 MA's), (39, 104709), (42, 104736), (61, 104811), (68, 104847), (82, 104922), (83, 104925), (108, 105141), (119, 105216), (122, 105231), (125, 105261), (135, 105357), (142, 105411), (148, 105465),

Gene: Specks_202 Start: 106584, Stop: 107627, Start Num: 12

Candidate Starts for Specks_202:

(6, 106485), (7, 106500), (Start: 12 @106584 has 174 MA's), (Start: 24 @106671 has 6 MA's), (39, 106827), (42, 106854), (61, 106929), (68, 106965), (82, 107040), (83, 107043), (108, 107259), (119, 107334), (122, 107349), (125, 107379), (135, 107475), (142, 107529), (148, 107583),

Gene: Sprinklers_196 Start: 104833, Stop: 105876, Start Num: 12

Candidate Starts for Sprinklers_196:

(6, 104734), (7, 104749), (Start: 12 @104833 has 174 MA's), (Start: 24 @104920 has 6 MA's), (39, 105076), (42, 105103), (61, 105178), (68, 105214), (82, 105289), (83, 105292), (108, 105508), (119, 105583), (122, 105598), (125, 105628), (135, 105724), (142, 105778), (148, 105832),

Gene: Spud_193 Start: 104941, Stop: 105897, Start Num: 24

Candidate Starts for Spud_193:

(6, 104755), (7, 104770), (Start: 12 @104854 has 174 MA's), (Start: 24 @104941 has 6 MA's), (39, 105097), (42, 105124), (61, 105199), (68, 105235), (82, 105310), (83, 105313), (108, 105529), (119, 105604), (122, 105619), (125, 105649), (135, 105745), (142, 105799), (148, 105853),

Gene: SrishMeg2525_196 Start: 106018, Stop: 107061, Start Num: 12

Candidate Starts for SrishMeg2525_196:

(6, 105919), (7, 105934), (Start: 12 @106018 has 174 MA's), (Start: 24 @106105 has 6 MA's), (39, 106261), (42, 106288), (61, 106363), (68, 106399), (82, 106474), (83, 106477), (108, 106693), (119, 106768), (122, 106783), (125, 106813), (135, 106909), (142, 106963), (148, 107017),

Gene: StephanieG_195 Start: 106049, Stop: 107092, Start Num: 12

Candidate Starts for StephanieG_195:

(6, 105950), (7, 105965), (Start: 12 @106049 has 174 MA's), (Start: 24 @106136 has 6 MA's), (39, 106292), (42, 106319), (61, 106394), (68, 106430), (82, 106505), (83, 106508), (108, 106724), (119, 106799), (122, 106814), (125, 106844), (135, 106940), (142, 106994), (148, 107048),

Gene: Stormageddon_67 Start: 64396, Stop: 65460, Start Num: 15

Candidate Starts for Stormageddon_67:

(Start: 15 @64396 has 2 MA's), (20, 64456), (29, 64513), (35, 64564), (36, 64591), (38, 64603), (48, 64669), (51, 64687), (60, 64750), (64, 64774), (78, 64861), (81, 64900), (84, 64924), (90, 64972), (91, 64981), (93, 65002), (97, 65035), (99, 65062), (115, 65173), (118, 65197), (121, 65209), (128, 65266), (134, 65314), (136, 65338), (147, 65404), (149, 65425),

Gene: Stubby_183 Start: 104894, Stop: 105937, Start Num: 12

Candidate Starts for Stubby_183:

(6, 104795), (7, 104810), (Start: 12 @104894 has 174 MA's), (Start: 24 @104981 has 6 MA's), (39, 105137), (42, 105164), (61, 105239), (68, 105275), (82, 105350), (83, 105353), (108, 105569), (119, 105644), (122, 105659), (125, 105689), (135, 105785), (142, 105839), (148, 105893),

Gene: StubbySaigey_203 Start: 105264, Stop: 106307, Start Num: 12

Candidate Starts for StubbySaigey_203:

(6, 105165), (7, 105180), (Start: 12 @105264 has 174 MA's), (Start: 24 @105351 has 6 MA's), (39, 105507), (42, 105534), (61, 105609), (68, 105645), (82, 105720), (83, 105723), (108, 105939), (119, 106014), (122, 106029), (125, 106059), (135, 106155), (142, 106209), (148, 106263),

Gene: Substance289_195 Start: 104323, Stop: 105366, Start Num: 12

Candidate Starts for Substance289_195:

(6, 104224), (7, 104239), (Start: 12 @104323 has 174 MA's), (Start: 24 @104410 has 6 MA's), (39, 104566), (42, 104593), (61, 104668), (68, 104704), (82, 104779), (83, 104782), (108, 104998), (119, 105073), (122, 105088), (125, 105118), (135, 105214), (142, 105268), (148, 105322),

Gene: Tainan_199 Start: 105603, Stop: 106694, Start Num: 12

Candidate Starts for Tainan_199:

(6, 105504), (7, 105519), (Start: 12 @105603 has 174 MA's), (Start: 24 @105690 has 6 MA's), (39, 105846), (42, 105873), (61, 105948), (68, 105984), (82, 106059), (83, 106062), (108, 106278), (119, 106353), (152, 106626), (154, 106644), (155, 106662),

Gene: Teardrop_195 Start: 103779, Stop: 104822, Start Num: 12

Candidate Starts for Teardrop_195:

(6, 103680), (7, 103695), (Start: 12 @103779 has 174 MA's), (Start: 24 @103866 has 6 MA's), (39, 104022), (42, 104049), (61, 104124), (68, 104160), (82, 104235), (83, 104238), (108, 104454), (119, 104529), (122, 104544), (125, 104574), (135, 104670), (142, 104724), (148, 104778),

Gene: TinyTim_197 Start: 104867, Stop: 105910, Start Num: 12

Candidate Starts for TinyTim_197:

(6, 104768), (7, 104783), (Start: 12 @104867 has 174 MA's), (Start: 24 @104954 has 6 MA's), (39, 105110), (42, 105137), (61, 105212), (68, 105248), (82, 105323), (83, 105326), (108, 105542), (119, 105617), (122, 105632), (125, 105662), (135, 105758), (142, 105812), (148, 105866),

Gene: Tonenili_219 Start: 111161, Stop: 112204, Start Num: 12

Candidate Starts for Tonenili_219:

(Start: 12 @111161 has 174 MA's), (26, 111269), (36, 111368), (39, 111404), (52, 111464), (61, 111506), (69, 111545), (71, 111548), (75, 111572), (80, 111584), (86, 111656), (96, 111743), (108,

111836), (119, 111911), (124, 111953), (137, 112076), (142, 112106), (148, 112160), (151, 112175), (153, 112199),

Gene: Tortoise16_196 Start: 105020, Stop: 106063, Start Num: 12

Candidate Starts for Tortoise16_196:

(6, 104921), (7, 104936), (Start: 12 @105020 has 174 MA's), (Start: 24 @105107 has 6 MA's), (39, 105263), (42, 105290), (61, 105365), (68, 105401), (82, 105476), (83, 105479), (108, 105695), (119, 105770), (122, 105785), (125, 105815), (135, 105911), (142, 105965), (148, 106019),

Gene: Trinitium_195 Start: 104614, Stop: 105657, Start Num: 12

Candidate Starts for Trinitium_195:

(6, 104515), (7, 104530), (Start: 12 @104614 has 174 MA's), (Start: 24 @104701 has 6 MA's), (39, 104857), (42, 104884), (61, 104959), (68, 104995), (82, 105070), (83, 105073), (108, 105289), (119, 105364), (122, 105379), (125, 105409), (135, 105505), (142, 105559), (148, 105613),

Gene: Turret_192 Start: 104196, Stop: 105239, Start Num: 12

Candidate Starts for Turret_192:

(6, 104097), (7, 104112), (Start: 12 @104196 has 174 MA's), (Start: 24 @104283 has 6 MA's), (39, 104439), (42, 104466), (61, 104541), (68, 104577), (82, 104652), (83, 104655), (108, 104871), (119, 104946), (122, 104961), (125, 104991), (135, 105087), (142, 105141), (148, 105195),

Gene: Tyke_196 Start: 106387, Stop: 107430, Start Num: 12

Candidate Starts for Tyke_196:

(6, 106288), (7, 106303), (Start: 12 @106387 has 174 MA's), (Start: 24 @106474 has 6 MA's), (39, 106630), (42, 106657), (61, 106732), (68, 106768), (82, 106843), (83, 106846), (108, 107062), (119, 107137), (122, 107152), (125, 107182), (135, 107278), (142, 107332), (148, 107386),

Gene: ValleyTerrace_199 Start: 104471, Stop: 105514, Start Num: 12

Candidate Starts for ValleyTerrace_199:

(6, 104372), (7, 104387), (Start: 12 @104471 has 174 MA's), (Start: 24 @104558 has 6 MA's), (39, 104714), (42, 104741), (61, 104816), (68, 104852), (82, 104927), (83, 104930), (108, 105146), (119, 105221), (122, 105236), (125, 105266), (135, 105362), (142, 105416), (148, 105470),

Gene: Vortrix_217 Start: 109948, Stop: 110991, Start Num: 12

Candidate Starts for Vortrix_217:

(Start: 12 @109948 has 174 MA's), (16, 109969), (26, 110056), (36, 110155), (39, 110191), (52, 110251), (61, 110293), (69, 110332), (71, 110335), (75, 110359), (80, 110371), (86, 110443), (96, 110530), (108, 110623), (119, 110698), (124, 110740), (137, 110863), (142, 110893), (148, 110947), (151, 110962), (153, 110986),

Gene: Wally_197 Start: 104764, Stop: 105807, Start Num: 12

Candidate Starts for Wally_197:

(6, 104665), (7, 104680), (Start: 12 @104764 has 174 MA's), (Start: 24 @104851 has 6 MA's), (39, 105007), (42, 105034), (61, 105109), (68, 105145), (82, 105220), (83, 105223), (108, 105439), (119, 105514), (122, 105529), (125, 105559), (135, 105655), (142, 105709), (148, 105763),

Gene: Willis_199 Start: 105678, Stop: 106721, Start Num: 12

Candidate Starts for Willis_199:

(6, 105579), (7, 105594), (Start: 12 @105678 has 174 MA's), (Start: 24 @105765 has 6 MA's), (39, 105921), (42, 105948), (61, 106023), (68, 106059), (82, 106134), (83, 106137), (108, 106353), (119, 106428), (122, 106443), (125, 106473), (135, 106569), (142, 106623), (148, 106677),

Gene: Yassified_195 Start: 104810, Stop: 105853, Start Num: 12

Candidate Starts for Yassified_195:

(6, 104711), (7, 104726), (Start: 12 @104810 has 174 MA's), (Start: 24 @104897 has 6 MA's), (39, 105053), (42, 105080), (61, 105155), (68, 105191), (82, 105266), (83, 105269), (108, 105485), (119, 105560), (122, 105575), (125, 105605), (135, 105701), (142, 105755), (148, 105809),

Gene: YemiJoy2021_199 Start: 106434, Stop: 107477, Start Num: 12

Candidate Starts for YemiJoy2021_199:

(6, 106335), (7, 106350), (Start: 12 @106434 has 174 MA's), (Start: 24 @106521 has 6 MA's), (39, 106677), (42, 106704), (61, 106779), (68, 106815), (82, 106890), (83, 106893), (108, 107109), (119, 107184), (122, 107199), (125, 107229), (135, 107325), (142, 107379), (148, 107433),

Gene: YoungMoneyMata_197 Start: 104976, Stop: 106019, Start Num: 12

Candidate Starts for YoungMoneyMata_197:

(6, 104877), (7, 104892), (Start: 12 @104976 has 174 MA's), (Start: 24 @105063 has 6 MA's), (39, 105219), (42, 105246), (61, 105321), (68, 105357), (82, 105432), (83, 105435), (108, 105651), (119, 105726), (122, 105741), (125, 105771), (135, 105867), (142, 105921), (148, 105975),

Gene: Yucca_199 Start: 106426, Stop: 107469, Start Num: 12

Candidate Starts for Yucca_199:

(6, 106327), (7, 106342), (Start: 12 @106426 has 174 MA's), (Start: 24 @106513 has 6 MA's), (39, 106669), (42, 106696), (61, 106771), (68, 106807), (82, 106882), (83, 106885), (108, 107101), (119, 107176), (122, 107191), (125, 107221), (135, 107317), (142, 107371), (148, 107425),

Gene: Zalkecks_198 Start: 105507, Stop: 106550, Start Num: 12

Candidate Starts for Zalkecks_198:

(6, 105408), (7, 105423), (Start: 12 @105507 has 174 MA's), (Start: 24 @105594 has 6 MA's), (39, 105750), (42, 105777), (61, 105852), (68, 105888), (82, 105963), (83, 105966), (108, 106182), (119, 106257), (122, 106272), (125, 106302), (135, 106398), (142, 106452), (148, 106506),

Gene: Zeenon_201 Start: 106078, Stop: 107121, Start Num: 12

Candidate Starts for Zeenon_201:

(6, 105979), (7, 105994), (Start: 12 @106078 has 174 MA's), (Start: 24 @106165 has 6 MA's), (39, 106321), (42, 106348), (61, 106423), (68, 106459), (82, 106534), (83, 106537), (108, 106753), (119, 106828), (122, 106843), (125, 106873), (135, 106969), (142, 107023), (148, 107077),

Gene: ZygoTaiga_195 Start: 106698, Stop: 107741, Start Num: 12

Candidate Starts for ZygoTaiga_195:

(6, 106599), (7, 106614), (Start: 12 @106698 has 174 MA's), (Start: 24 @106785 has 6 MA's), (39, 106941), (42, 106968), (61, 107043), (68, 107079), (82, 107154), (83, 107157), (108, 107373), (119, 107448), (122, 107463), (125, 107493), (135, 107589), (142, 107643), (148, 107697),