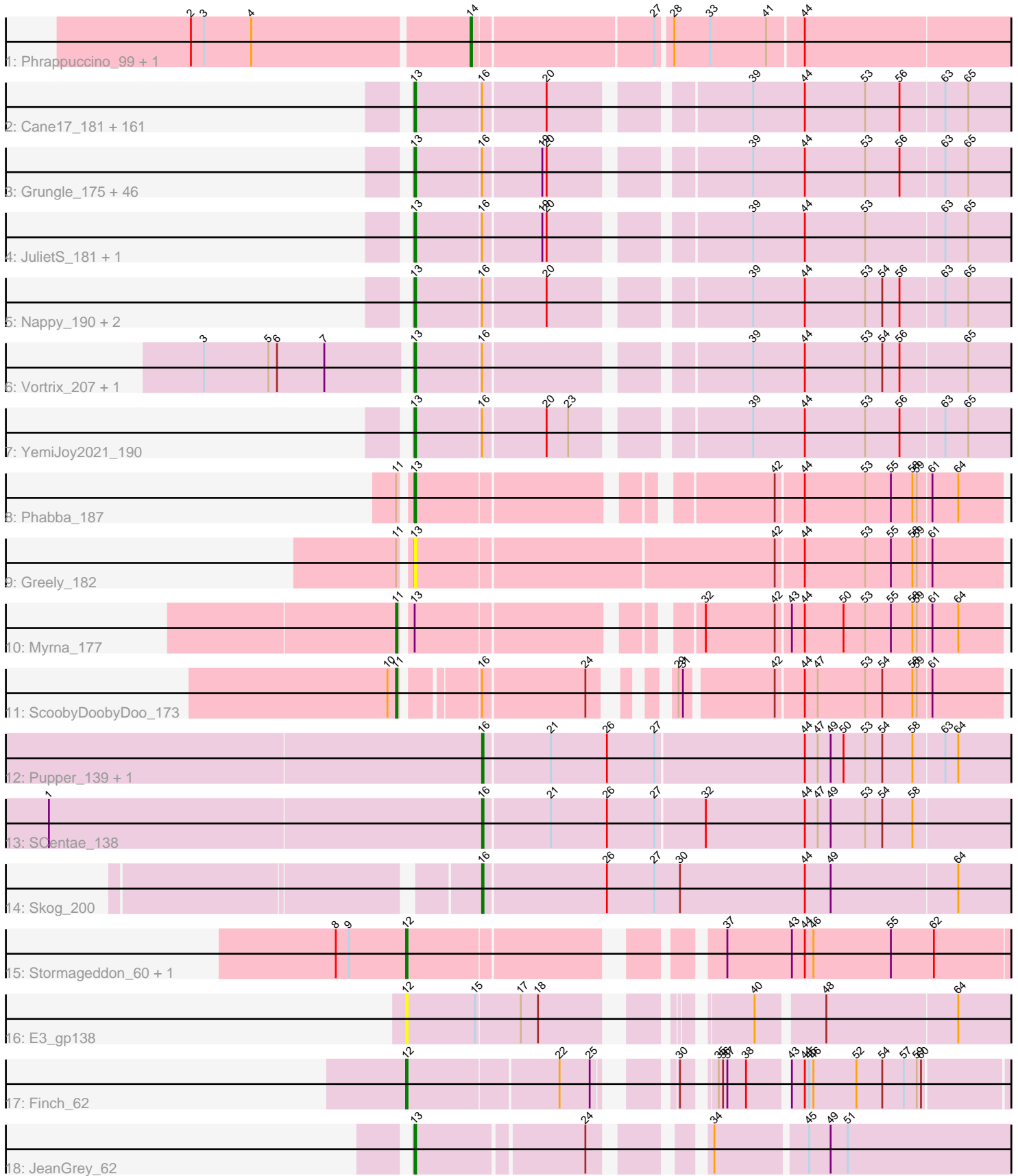


Pham 308035



Note: Tracks are now grouped by subcluster and scaled. Switching in subcluster is indicated by changes in track color. Track scale is now set by default to display the region 30 bp upstream of start 1 to 30 bp downstream of the last possible start. If this default region is judged to be packed too tightly with annotated starts, the track will be further scaled to only show that region of the ORF with annotated starts. This action will be indicated by adding "Zoomed" to the title. For starts, yellow indicates the location of called starts comprised solely of Glimmer/GeneMark auto-annotations, green indicates the location of called starts with at least 1 manual gene annotation.

Pham 308035 Report

This analysis was run 06/27/26 on database version 652.

Pham number 308035 has 232 members, 39 are drafts.

Phages represented in each track:

- Track 1 : Phrappuccino_99, Settecandela_99
- Track 2 : Cane17_181, McWolfish_187, Belieber_184, Kamryn_189, Tortoise16_188, Roots515_192, Kboogie_194, Lethe_190, BackyardAgain_187, YoungMoneyMata_189, Turret_184, Ading_190, LolaVinca_188, MoMoMixon_188, Phusco_189, ChickenPhender_187, Cali_184, Bowman_188, Erdmann_191, Zalkecks_189, PharkleMinkus_192, Nidhogg_191, Burrough_192, Issimir_184, BananaFence_187, Gabriel_193, Chargie21_188, Bigswole_193, Adlitam_189, LookingGlass_189, FudgeTart_185, EmToTheThree_191, Pupusa_194, Sauce_186, Izajani_188, Grasshills_197, Jaygup_186, InterFolia_193, Gizmo_195, Rabinovish_184, Littleton_193, Blackbrain_187, Rizal_184, Primadonna_184, Jemmno_189, Morizzled23_188, BobaPhatt_183, Daffodil_194, Ava3_189, FrayBell_193, HyRo_178, Delylah_191, McGee_190, Concombre_194, Basquiat_188, Labradorite_188, Lunareta_189, Halldule_182, Naval22_197, BadAgartude_184, Janiyra_194, Domi_184, StubbySaigey_194, Yucca_190, Tyke_188, Khaleesi_189, NoodleTree_196, Wally_190, Demodog_195, Bxz1_181, ZygoTaiga_186, Willis_190, Asterius_191, EasyJones_194, IkeLoa_182, Bangla1971_190, Fongie_191, Ewok_189, Melpomini_184, LifeSavor_189, NedWong_189, Darko_189, Blubba_179, Salacia_190, JigglyPuff_196, JayJay_192, Matsumoto_189, Quasimodo_193, ParkTD_188, SoilZilla_186, LinStu_188, Jessibeth14_190, PurduePete_190, Lee7_190, DeejaClivia_178, SrishMeg2525_187, Caravan_181, Stubby_175, FoxtrotP1_188, Essence_187, Sebata_191, LordLeafolot_191, DrPhinkDaddy_187, Cleatunium_183, Rocha_187, Dietrick_180, Spec_185, ChaylaJr_188, EmmaElysia_193, Moiqah_185, Mikro_185, Drazdys_188, SVoro_186, Pleione_194, OrediggerDelux_186, Specks_194, Tainan_191, ScottMcG_184, Rahel_191, Fludd_191, Maby2021_189, Zeenon_192, Pinkcreek_174, Maturis_188, Napoleon13_188, ErnieJ_183, Montpel_189, ArcherS7_189, EggyFarm_198, Breeniome_189, Moby_186, Ablatia_190, Pier_191, Dandelion_197, Catera_185, Loanshark_187, Pio_198, TinyTim_188, StephanieG_187, Ghost_190, Mangeria_190, DTDevon_192, Astraea_184, Derek_187, MikeLiesIn_191, Flabslab_186, Iota_184, BigCity_198, Megamind_187, NuevoMundo_193, Bipolarisk_188, Alice_177, Teardrop_187, I3_198, SmallFry_190, QBert_181, Shelob_191, Delilah_188, Colt_181, Jezreel_187, Bonray_192, Shnickers_188
- Track 3 : Grungle_175, Fixie_189, Norm_189, Ronan_185, ET08_178, Babyland_192, Guwapp_185, Trinitium_187, Phlegm_193, Audrick_193, SilverDipper_193, Duckfeet_184, JustHall_185, Substance289_187, Phox_190, BeanWater_181, Pivoine_190, CindyLou_191, Patter_190, Gamgam_190,

Capablanca_194, LRRHood_183, Chomp_189, CharlieB_183, JPickles_186, Blackdragon_184, Koguma_188, Bezza_178, ValleyTerrace_190, InigoMontoya_192, Naija_190, GlutenPhree_190, ShiaLabeouf_187, Spud_186, RoMag_185, Amataga_190, Momo_190, Ngannou_186, Yassified_186, Bread_185, Latch_189, Shaqnato_182, Atlantean_189, Dessert_187, Cactojaque_186, Jedediah_190, Lukilu_180

- Track 4 : JulietS_181, Sprinklers_187
- Track 5 : Nappy_190, Shrimp_191, DirtMonster_183
- Track 6 : Vortrix_207, Tonenili_209
- Track 7 : YemiJoy2021_190
- Track 8 : Phabba_187
- Track 9 : Greely_182
- Track 10 : Myrna_177
- Track 11 : ScoobyDoobyDoo_173
- Track 12 : Pupper_139, CherryTomatoes_140
- Track 13 : SCentae_138
- Track 14 : Skog_200
- Track 15 : Stormageddon_60, RedWattleHog_63
- Track 16 : E3_gp138
- Track 17 : Finch_62
- Track 18 : JeanGrey_62

Summary of Final Annotations (See graph section above for start numbers):

The start number called the most often in the published annotations is 13, it was called in 182 of the 193 non-draft genes in the pham.

Genes that call this "Most Annotated" start:

• Ablatia_190, Ading_190, Adlitam_189, Alice_177, Amataga_190, ArcherS7_189, Asterius_191, Astraea_184, Atlantean_189, Audrick_193, Ava3_189, Babyland_192, BackyardAgain_187, BadAgartude_184, BananaFence_187, Bangla1971_190, Basquiat_188, BeanWater_181, Belieber_184, Bezza_178, BigCity_198, Bigswole_193, Bipolarisk_188, Blackbrain_187, Blackdragon_184, Blubba_179, BobaPhatt_183, Bonray_192, Bowman_188, Bread_185, Breeniome_189, Burrough_192, Bxz1_181, Cactojaque_186, Cali_184, Cane17_181, Capablanca_194, Caravan_181, Catera_185, Chargie21_188, CharlieB_183, ChaylaJr_188, ChickenPhender_187, Chomp_189, CindyLou_191, Cleatunium_183, Colt_181, Concombre_194, DTDevon_192, Daffodil_194, Dandelion_197, Darko_189, DeejaClivia_178, Delilah_188, Delylah_191, Demodog_195, Derek_187, Dessert_187, Dietrick_180, DirtMonster_183, Domi_184, DrPhinkDaddy_187, Drazdys_188, Duckfeet_184, ET08_178, EasyJones_194, EggyFarm_198, EmToTheThree_191, EmmaElysia_193, Erdmann_191, ErnieJ_183, Essence_187, Ewok_189, Fixie_189, Flabslab_186, Fludd_191, Fongie_191, FoxtrotP1_188, FrayBell_193, FudgeTart_185, Gabriel_193, Gamgam_190, Ghost_190, Gizmo_195, GlutenPhree_190, Grasshills_197, Greely_182, Grungle_175, Guwapp_185, Halldule_182, HyRo_178, I3_198, IkeLoa_182, InigoMontoya_192, InterFolia_193, Iota_184, Issimir_184, Izajani_188, JPickles_186, Janiyra_194, JayJay_192, Jaygup_186, JeanGrey_62, Jedediah_190, Jemmno_189, Jessibeth14_190, Jezreel_187, JigglyPuff_196, JulietS_181, JustHall_185, Kamryn_189, Kboogie_194, Khaleesi_189, Koguma_188, LRRHood_183, Labradorite_188, Latch_189,

Lee7_190, Lethe_190, LifeSavor_189, LinStu_188, Littleton_193, Loanshark_187, LolaVinca_188, LookingGlass_189, LordLeafolot_191, Lukilu_180, Lunareta_189, Maby2021_189, Mangeria_190, Matsumoto_189, Maturis_188, McGee_190, McWolfish_187, Megamind_187, Melpomini_184, MikeLiesIn_191, Mikro_185, MoMoMixon_188, Moby_186, Moiqah_185, Momo_190, Montpel_189, Morizzled23_188, Naija_190, Napoleon13_188, Nappy_190, Naval22_197, NedWong_189, Ngannou_186, Nidhogg_191, NoodleTree_196, Norm_189, NuevoMundo_193, OrediggerDelux_186, ParkTD_188, Patter_190, Phabba_187, PharkleMinkus_192, Phlegm_193, Phox_190, Phusco_189, Pier_191, Pinkcreek_174, Pio_198, Pivoine_190, Pleione_194, Primadonna_184, Pupusa_194, PurduePete_190, QBert_181, Quasimodo_193, Rabinovich_184, Rahel_191, Rizal_184, RoMag_185, Rocha_187, Ronan_185, Roots515_192, SVoro_186, Salacia_190, Sauce_186, ScottMcG_184, Sebata_191, Shaqnato_182, Shelob_191, ShiaLabeouf_187, Shnickers_188, Shrimp_191, SilverDipper_193, SmallFry_190, SoilZilla_186, Spec_185, Specks_194, Sprinklers_187, Spud_186, SrishMeg2525_187, StephanieG_187, StubbySaigey_194, Stubby_175, Substance289_187, Tainan_191, Teardrop_187, TinyTim_188, Tonenili_209, Tortoise16_188, Trinitium_187, Turret_184, Tyke_188, ValleyTerrace_190, Vortex_207, Wally_190, Willis_190, Yassified_186, YemiJoy2021_190, YoungMoneyMata_189, Yucca_190, Zalkecks_189, Zeenon_192, ZygoTaiga_186,

Genes that have the "Most Annotated" start but do not call it:

- Myrna_177,

Genes that do not have the "Most Annotated" start:

- CherryTomatoes_140, E3_gp138, Finch_62, Phrappuccino_99, Pupper_139, RedWattleHog_63, SCentae_138, ScoobyDoobyDoo_173, Settecandela_99, Skog_200, Stormageddon_60,

Summary by start number:

Start 11:

- Found in 4 of 232 (1.7%) of genes in pham
- Manual Annotations of this start: 2 of 193
- Called 50.0% of time when present
- Phage (with cluster) where this start called: Myrna_177 (C2), ScoobyDoobyDoo_173 (C2),

Start 12:

- Found in 4 of 232 (1.7%) of genes in pham
- Manual Annotations of this start: 3 of 193
- Called 100.0% of time when present
- Phage (with cluster) where this start called: E3_gp138 (singleton), Finch_62 (singleton), RedWattleHog_63 (DX), Stormageddon_60 (DX),

Start 13:

- Found in 221 of 232 (95.3%) of genes in pham
- Manual Annotations of this start: 182 of 193
- Called 99.5% of time when present
- Phage (with cluster) where this start called: Ablatia_190 (C1), Ading_190 (C1), Adlitam_189 (C1), Alice_177 (C1), Amataga_190 (C1), ArcherS7_189 (C1), Asterius_191 (C1), Astraea_184 (C1), Atlantean_189 (C1), Audrick_193 (C1), Ava3_189 (C1), Babyland_192 (C1), BackyardAgain_187 (C1), BadAgartude_184

(C1), BananaFence_187 (C1), Bangla1971_190 (C1), Basquiat_188 (C1), BeanWater_181 (C1), Belieber_184 (C1), Bezza_178 (C1), BigCity_198 (C1), Bigswole_193 (C1), Bipolarisk_188 (C1), Blackbrain_187 (C1), Blackdragon_184 (C1), Blubba_179 (C1), BobaPhatt_183 (C1), Bonray_192 (C1), Bowman_188 (C1), Bread_185 (C1), Breeniome_189 (C1), Burrough_192 (C1), Bxz1_181 (C1), Cactojaque_186 (C1), Cali_184 (C1), Cane17_181 (C1), Capablanca_194 (C1), Caravan_181 (C1), Catera_185 (C1), Chargie21_188 (C1), CharlieB_183 (C1), ChaylaJr_188 (C1), ChickenPhender_187 (C1), Chomp_189 (C1), CindyLou_191 (C1), Cleatunium_183 (C1), Colt_181 (C1), Concombre_194 (C1), DTDevon_192 (C1), Daffodil_194 (C1), Dandelion_197 (C1), Darko_189 (C1), DeejaClivia_178 (C1), Delilah_188 (C1), Delylah_191 (C1), Demodog_195 (C1), Derek_187 (C1), Dessert_187 (C1), Dietrick_180 (C1), DirtMonster_183 (C1), Domi_184 (C1), DrPhinkDaddy_187 (C1), Drazdys_188 (C1), Duckfeet_184 (C1), ET08_178 (C1), EasyJones_194 (C1), EggyFarm_198 (C1), EmToTheThree_191 (C1), EmmaElysia_193 (C1), Erdmann_191 (C1), ErnieJ_183 (C1), Essence_187 (C1), Ewok_189 (C1), Fixie_189 (C1), Flabslab_186 (C1), Fludd_191 (C1), Fongie_191 (C1), FoxtrotP1_188 (C1), FrayBell_193 (C1), FudgeTart_185 (C1), Gabriel_193 (C1), Gamgam_190 (C1), Ghost_190 (C1), Gizmo_195 (C1), GlutenPhree_190 (C1), Grasshills_197 (C1), Greely_182 (C2), Grungle_175 (C1), Guwapp_185 (C1), Halldule_182 (C1), HyRo_178 (C1), I3_198 (C1), IkeLoa_182 (C1), InigoMontoya_192 (C1), InterFolia_193 (C1), Iota_184 (C1), Issimir_184 (C1), Izajani_188 (C1), JPickles_186 (C1), Janiyr_194 (C1), JayJay_192 (C1), Jaygup_186 (C1), JeanGrey_62 (singleton), Jediah_190 (C1), Jemmno_189 (C1), Jessibeth14_190 (C1), Jezreel_187 (C1), JigglyPuff_196 (C1), JulietS_181 (C1), JustHall_185 (C1), Kamryn_189 (C1), Kboogie_194 (C1), Khaleesi_189 (C1), Koguma_188 (C1), LRRHood_183 (C1), Labradorite_188 (C1), Latch_189 (C1), Lee7_190 (C1), Lethe_190 (C1), LifeSavor_189 (C1), LinStu_188 (C1), Littleton_193 (C1), Loanshark_187 (C1), LolaVinca_188 (C1), LookingGlass_189 (C1), LordLeafolot_191 (C1), Lukilu_180 (C1), Lunareta_189 (C1), Maby2021_189 (C1), Mangeria_190 (C1), Matsumoto_189 (C1), Maturis_188 (C1), McGee_190 (C1), McWolfish_187 (C1), Megamind_187 (C1), Melpomini_184 (C1), MikeLiesIn_191 (C1), Mikro_185 (C1), MoMoMixon_188 (C1), Moby_186 (C1), Moiqah_185 (C1), Momo_190 (C1), Montpel_189 (C1), Morizzled23_188 (C1), Naija_190 (C1), Napoleon13_188 (C1), Nappy_190 (C1), Naval22_197 (C1), NedWong_189 (C1), Ngannou_186 (C1), Nidhogg_191 (C1), NoodleTree_196 (C1), Norm_189 (C1), NuevoMundo_193 (C1), OrediggerDelux_186 (C1), ParkTD_188 (C1), Patter_190 (C1), Phabba_187 (C2), PharkleMinkus_192 (C1), Phlegm_193 (C1), Phox_190 (C1), Phusco_189 (C1), Pier_191 (C1), Pinkcreek_174 (C1), Pio_198 (C1), Pivoine_190 (C1), Pleione_194 (C1), Primadonna_184 (C1), Pupusa_194 (C1), PurduePete_190 (C1), QBert_181 (C1), Quasimodo_193 (C1), Rabinovish_184 (C1), Rahel_191 (C1), Rizal_184 (C1), RoMag_185 (C1), Rocha_187 (C1), Ronan_185 (C1), Roots515_192 (C1), SVoro_186 (C1), Salacia_190 (C1), Sauce_186 (C1), ScottMcG_184 (C1), Sebata_191 (C1), Shaqnato_182 (C1), Shelob_191 (C1), ShiaLabeouf_187 (C1), Shnickers_188 (C1), Shrimp_191 (C1), SilverDipper_193 (C1), SmallFry_190 (C1), SoilZilla_186 (C1), Spec_185 (C1), Specks_194 (C1), Sprinklers_187 (C1), Spud_186 (C1), SrishMeg2525_187 (C1), StephanieG_187 (C1), StubbySaigey_194 (C1), Stubby_175 (C1), Substance289_187 (C1), Tainan_191 (C1), Teardrop_187 (C1), TinyTim_188 (C1), Tonerili_209 (C1), Tortoise16_188 (C1), Trinitium_187 (C1), Turret_184 (C1), Tyke_188 (C1), ValleyTerrace_190 (C1), Vortrix_207 (C1), Wally_190 (C1), Willis_190 (C1), Yassified_186 (C1), YemiJoy2021_190 (C1), YoungMoneyMata_189 (C1), Yucca_190 (C1), Zalkecks_189 (C1), Zeenon_192 (C1), ZygoTaiga_186 (C1),

Start 14:

- Found in 2 of 232 (0.9%) of genes in pham
- Manual Annotations of this start: 2 of 193
- Called 100.0% of time when present
- Phage (with cluster) where this start called: Phrappuccino_99 (AA), Settecandela_99 (AA),

Start 16:

- Found in 222 of 232 (95.7%) of genes in pham
- Manual Annotations of this start: 4 of 193
- Called 1.8% of time when present
- Phage (with cluster) where this start called: CherryTomatoes_140 (DO), Pupper_139 (DO), SCentae_138 (DO), Skog_200 (DO),

Summary by clusters:

There are 6 clusters represented in this pham: AA, DO, singleton, DX, C2, C1,

Info for manual annotations of cluster AA:

- Start number 14 was manually annotated 2 times for cluster AA.

Info for manual annotations of cluster C1:

- Start number 13 was manually annotated 180 times for cluster C1.

Info for manual annotations of cluster C2:

- Start number 11 was manually annotated 2 times for cluster C2.
- Start number 13 was manually annotated 1 time for cluster C2.

Info for manual annotations of cluster DO:

- Start number 16 was manually annotated 4 times for cluster DO.

Info for manual annotations of cluster DX:

- Start number 12 was manually annotated 2 times for cluster DX.

Gene Information:

Gene: Ablatia_190 Start: 102311, Stop: 102736, Start Num: 13

Candidate Starts for Ablatia_190:

(Start: 13 @102311 has 182 MA's), (Start: 16 @102356 has 4 MA's), (20, 102398), (39, 102518), (44, 102554), (53, 102596), (56, 102620), (63, 102650), (65, 102665),

Gene: Ading_190 Start: 102146, Stop: 102571, Start Num: 13

Candidate Starts for Ading_190:

(Start: 13 @102146 has 182 MA's), (Start: 16 @102191 has 4 MA's), (20, 102233), (39, 102353), (44, 102389), (53, 102431), (56, 102455), (63, 102485), (65, 102500),

Gene: Adlitam_189 Start: 101134, Stop: 101559, Start Num: 13

Candidate Starts for Adlitam_189:

(Start: 13 @101134 has 182 MA's), (Start: 16 @101179 has 4 MA's), (20, 101221), (39, 101341), (44, 101377), (53, 101419), (56, 101443), (63, 101473), (65, 101488),

Gene: Alice_177 Start: 101200, Stop: 101625, Start Num: 13

Candidate Starts for Alice_177:

(Start: 13 @101200 has 182 MA's), (Start: 16 @101245 has 4 MA's), (20, 101287), (39, 101407), (44, 101443), (53, 101485), (56, 101509), (63, 101539), (65, 101554),

Gene: Amataga_190 Start: 100562, Stop: 100987, Start Num: 13

Candidate Starts for Amataga_190:

(Start: 13 @100562 has 182 MA's), (Start: 16 @100607 has 4 MA's), (19, 100646), (20, 100649), (39, 100769), (44, 100805), (53, 100847), (56, 100871), (63, 100901), (65, 100916),

Gene: ArcherS7_189 Start: 101592, Stop: 102017, Start Num: 13

Candidate Starts for ArcherS7_189:

(Start: 13 @101592 has 182 MA's), (Start: 16 @101637 has 4 MA's), (20, 101679), (39, 101799), (44, 101835), (53, 101877), (56, 101901), (63, 101931), (65, 101946),

Gene: Asterius_191 Start: 101279, Stop: 101704, Start Num: 13

Candidate Starts for Asterius_191:

(Start: 13 @101279 has 182 MA's), (Start: 16 @101324 has 4 MA's), (20, 101366), (39, 101486), (44, 101522), (53, 101564), (56, 101588), (63, 101618), (65, 101633),

Gene: Astraea_184 Start: 100654, Stop: 101079, Start Num: 13

Candidate Starts for Astraea_184:

(Start: 13 @100654 has 182 MA's), (Start: 16 @100699 has 4 MA's), (20, 100741), (39, 100861), (44, 100897), (53, 100939), (56, 100963), (63, 100993), (65, 101008),

Gene: Atlantean_189 Start: 100562, Stop: 100987, Start Num: 13

Candidate Starts for Atlantean_189:

(Start: 13 @100562 has 182 MA's), (Start: 16 @100607 has 4 MA's), (19, 100646), (20, 100649), (39, 100769), (44, 100805), (53, 100847), (56, 100871), (63, 100901), (65, 100916),

Gene: Audrick_193 Start: 101244, Stop: 101669, Start Num: 13

Candidate Starts for Audrick_193:

(Start: 13 @101244 has 182 MA's), (Start: 16 @101289 has 4 MA's), (19, 101328), (20, 101331), (39, 101451), (44, 101487), (53, 101529), (56, 101553), (63, 101583), (65, 101598),

Gene: Ava3_189 Start: 101305, Stop: 101730, Start Num: 13

Candidate Starts for Ava3_189:

(Start: 13 @101305 has 182 MA's), (Start: 16 @101350 has 4 MA's), (20, 101392), (39, 101512), (44, 101548), (53, 101590), (56, 101614), (63, 101644), (65, 101659),

Gene: Babyland_192 Start: 101339, Stop: 101764, Start Num: 13

Candidate Starts for Babyland_192:

(Start: 13 @101339 has 182 MA's), (Start: 16 @101384 has 4 MA's), (19, 101423), (20, 101426), (39, 101546), (44, 101582), (53, 101624), (56, 101648), (63, 101678), (65, 101693),

Gene: BackyardAgain_187 Start: 100040, Stop: 100465, Start Num: 13

Candidate Starts for BackyardAgain_187:

(Start: 13 @100040 has 182 MA's), (Start: 16 @100085 has 4 MA's), (20, 100127), (39, 100247), (44, 100283), (53, 100325), (56, 100349), (63, 100379), (65, 100394),

Gene: BadAgartude_184 Start: 101045, Stop: 101470, Start Num: 13

Candidate Starts for BadAgartude_184:

(Start: 13 @101045 has 182 MA's), (Start: 16 @101090 has 4 MA's), (20, 101132), (39, 101252), (44, 101288), (53, 101330), (56, 101354), (63, 101384), (65, 101399),

Gene: BananaFence_187 Start: 101283, Stop: 101708, Start Num: 13

Candidate Starts for BananaFence_187:

(Start: 13 @101283 has 182 MA's), (Start: 16 @101328 has 4 MA's), (20, 101370), (39, 101490), (44, 101526), (53, 101568), (56, 101592), (63, 101622), (65, 101637),

Gene: Bangla1971_190 Start: 100952, Stop: 101377, Start Num: 13

Candidate Starts for Bangla1971_190:

(Start: 13 @100952 has 182 MA's), (Start: 16 @100997 has 4 MA's), (20, 101039), (39, 101159), (44, 101195), (53, 101237), (56, 101261), (63, 101291), (65, 101306),

Gene: Basquiat_188 Start: 100866, Stop: 101291, Start Num: 13

Candidate Starts for Basquiat_188:

(Start: 13 @100866 has 182 MA's), (Start: 16 @100911 has 4 MA's), (20, 100953), (39, 101073), (44, 101109), (53, 101151), (56, 101175), (63, 101205), (65, 101220),

Gene: BeanWater_181 Start: 100606, Stop: 101031, Start Num: 13

Candidate Starts for BeanWater_181:

(Start: 13 @100606 has 182 MA's), (Start: 16 @100651 has 4 MA's), (19, 100690), (20, 100693), (39, 100813), (44, 100849), (53, 100891), (56, 100915), (63, 100945), (65, 100960),

Gene: Belieber_184 Start: 100180, Stop: 100605, Start Num: 13

Candidate Starts for Belieber_184:

(Start: 13 @100180 has 182 MA's), (Start: 16 @100225 has 4 MA's), (20, 100267), (39, 100387), (44, 100423), (53, 100465), (56, 100489), (63, 100519), (65, 100534),

Gene: Bezza_178 Start: 101118, Stop: 101543, Start Num: 13

Candidate Starts for Bezza_178:

(Start: 13 @101118 has 182 MA's), (Start: 16 @101163 has 4 MA's), (19, 101202), (20, 101205), (39, 101325), (44, 101361), (53, 101403), (56, 101427), (63, 101457), (65, 101472),

Gene: BigCity_198 Start: 104171, Stop: 104596, Start Num: 13

Candidate Starts for BigCity_198:

(Start: 13 @104171 has 182 MA's), (Start: 16 @104216 has 4 MA's), (20, 104258), (39, 104378), (44, 104414), (53, 104456), (56, 104480), (63, 104510), (65, 104525),

Gene: Bigswole_193 Start: 103604, Stop: 104029, Start Num: 13

Candidate Starts for Bigswole_193:

(Start: 13 @103604 has 182 MA's), (Start: 16 @103649 has 4 MA's), (20, 103691), (39, 103811), (44, 103847), (53, 103889), (56, 103913), (63, 103943), (65, 103958),

Gene: Bipolarisk_188 Start: 101573, Stop: 101998, Start Num: 13

Candidate Starts for Bipolarisk_188:

(Start: 13 @101573 has 182 MA's), (Start: 16 @101618 has 4 MA's), (20, 101660), (39, 101780), (44, 101816), (53, 101858), (56, 101882), (63, 101912), (65, 101927),

Gene: Blackbrain_187 Start: 101468, Stop: 101893, Start Num: 13

Candidate Starts for Blackbrain_187:

(Start: 13 @101468 has 182 MA's), (Start: 16 @101513 has 4 MA's), (20, 101555), (39, 101675), (44, 101711), (53, 101753), (56, 101777), (63, 101807), (65, 101822),

Gene: Blackdragon_184 Start: 100904, Stop: 101329, Start Num: 13

Candidate Starts for Blackdragon_184:

(Start: 13 @100904 has 182 MA's), (Start: 16 @100949 has 4 MA's), (19, 100988), (20, 100991), (39, 101111), (44, 101147), (53, 101189), (56, 101213), (63, 101243), (65, 101258),

Gene: Blubba_179 Start: 104445, Stop: 104870, Start Num: 13

Candidate Starts for Blubba_179:

(Start: 13 @104445 has 182 MA's), (Start: 16 @104490 has 4 MA's), (20, 104532), (39, 104652), (44, 104688), (53, 104730), (56, 104754), (63, 104784), (65, 104799),

Gene: BobaPhatt_183 Start: 100065, Stop: 100490, Start Num: 13

Candidate Starts for BobaPhatt_183:

(Start: 13 @100065 has 182 MA's), (Start: 16 @100110 has 4 MA's), (20, 100152), (39, 100272), (44, 100308), (53, 100350), (56, 100374), (63, 100404), (65, 100419),

Gene: Bonray_192 Start: 102976, Stop: 103401, Start Num: 13

Candidate Starts for Bonray_192:

(Start: 13 @102976 has 182 MA's), (Start: 16 @103021 has 4 MA's), (20, 103063), (39, 103183), (44, 103219), (53, 103261), (56, 103285), (63, 103315), (65, 103330),

Gene: Bowman_188 Start: 102260, Stop: 102685, Start Num: 13

Candidate Starts for Bowman_188:

(Start: 13 @102260 has 182 MA's), (Start: 16 @102305 has 4 MA's), (20, 102347), (39, 102467), (44, 102503), (53, 102545), (56, 102569), (63, 102599), (65, 102614),

Gene: Bread_185 Start: 100974, Stop: 101399, Start Num: 13

Candidate Starts for Bread_185:

(Start: 13 @100974 has 182 MA's), (Start: 16 @101019 has 4 MA's), (19, 101058), (20, 101061), (39, 101181), (44, 101217), (53, 101259), (56, 101283), (63, 101313), (65, 101328),

Gene: Breeniome_189 Start: 100605, Stop: 101030, Start Num: 13

Candidate Starts for Breeniome_189:

(Start: 13 @100605 has 182 MA's), (Start: 16 @100650 has 4 MA's), (20, 100692), (39, 100812), (44, 100848), (53, 100890), (56, 100914), (63, 100944), (65, 100959),

Gene: Burrough_192 Start: 102819, Stop: 103244, Start Num: 13

Candidate Starts for Burrough_192:

(Start: 13 @102819 has 182 MA's), (Start: 16 @102864 has 4 MA's), (20, 102906), (39, 103026), (44, 103062), (53, 103104), (56, 103128), (63, 103158), (65, 103173),

Gene: Bxz1_181 Start: 104018, Stop: 104443, Start Num: 13

Candidate Starts for Bxz1_181:

(Start: 13 @104018 has 182 MA's), (Start: 16 @104063 has 4 MA's), (20, 104105), (39, 104225), (44, 104261), (53, 104303), (56, 104327), (63, 104357), (65, 104372),

Gene: Cactojaque_186 Start: 100886, Stop: 101311, Start Num: 13

Candidate Starts for Cactojaque_186:

(Start: 13 @100886 has 182 MA's), (Start: 16 @100931 has 4 MA's), (19, 100970), (20, 100973), (39, 101093), (44, 101129), (53, 101171), (56, 101195), (63, 101225), (65, 101240),

Gene: Cali_184 Start: 102359, Stop: 102784, Start Num: 13

Candidate Starts for Cali_184:

(Start: 13 @102359 has 182 MA's), (Start: 16 @102404 has 4 MA's), (20, 102446), (39, 102566), (44, 102602), (53, 102644), (56, 102668), (63, 102698), (65, 102713),

Gene: Cane17_181 Start: 104854, Stop: 105279, Start Num: 13

Candidate Starts for Cane17_181:

(Start: 13 @104854 has 182 MA's), (Start: 16 @104899 has 4 MA's), (20, 104941), (39, 105061), (44, 105097), (53, 105139), (56, 105163), (63, 105193), (65, 105208),

Gene: Capablanca_194 Start: 103571, Stop: 103996, Start Num: 13

Candidate Starts for Capablanca_194:

(Start: 13 @103571 has 182 MA's), (Start: 16 @103616 has 4 MA's), (19, 103655), (20, 103658), (39, 103778), (44, 103814), (53, 103856), (56, 103880), (63, 103910), (65, 103925),

Gene: Caravan_181 Start: 101280, Stop: 101705, Start Num: 13

Candidate Starts for Caravan_181:

(Start: 13 @101280 has 182 MA's), (Start: 16 @101325 has 4 MA's), (20, 101367), (39, 101487), (44, 101523), (53, 101565), (56, 101589), (63, 101619), (65, 101634),

Gene: Catera_185 Start: 100566, Stop: 100991, Start Num: 13

Candidate Starts for Catera_185:

(Start: 13 @100566 has 182 MA's), (Start: 16 @100611 has 4 MA's), (20, 100653), (39, 100773), (44, 100809), (53, 100851), (56, 100875), (63, 100905), (65, 100920),

Gene: Chargie21_188 Start: 100866, Stop: 101291, Start Num: 13

Candidate Starts for Chargie21_188:

(Start: 13 @100866 has 182 MA's), (Start: 16 @100911 has 4 MA's), (20, 100953), (39, 101073), (44, 101109), (53, 101151), (56, 101175), (63, 101205), (65, 101220),

Gene: CharlieB_183 Start: 100808, Stop: 101233, Start Num: 13

Candidate Starts for CharlieB_183:

(Start: 13 @100808 has 182 MA's), (Start: 16 @100853 has 4 MA's), (19, 100892), (20, 100895), (39, 101015), (44, 101051), (53, 101093), (56, 101117), (63, 101147), (65, 101162),

Gene: ChaylaJr_188 Start: 101294, Stop: 101719, Start Num: 13

Candidate Starts for ChaylaJr_188:

(Start: 13 @101294 has 182 MA's), (Start: 16 @101339 has 4 MA's), (20, 101381), (39, 101501), (44, 101537), (53, 101579), (56, 101603), (63, 101633), (65, 101648),

Gene: CherryTomatoes_140 Start: 96955, Stop: 97335, Start Num: 16

Candidate Starts for CherryTomatoes_140:

(Start: 16 @96955 has 4 MA's), (21, 97000), (26, 97039), (27, 97072), (44, 97174), (47, 97183), (49, 97192), (50, 97201), (53, 97216), (54, 97228), (58, 97249), (63, 97270), (64, 97279),

Gene: ChickenPhender_187 Start: 101013, Stop: 101438, Start Num: 13

Candidate Starts for ChickenPhender_187:

(Start: 13 @101013 has 182 MA's), (Start: 16 @101058 has 4 MA's), (20, 101100), (39, 101220), (44, 101256), (53, 101298), (56, 101322), (63, 101352), (65, 101367),

Gene: Chomp_189 Start: 101851, Stop: 102276, Start Num: 13

Candidate Starts for Chomp_189:

(Start: 13 @101851 has 182 MA's), (Start: 16 @101896 has 4 MA's), (19, 101935), (20, 101938), (39, 102058), (44, 102094), (53, 102136), (56, 102160), (63, 102190), (65, 102205),

Gene: CindyLou_191 Start: 102594, Stop: 103019, Start Num: 13

Candidate Starts for CindyLou_191:

(Start: 13 @102594 has 182 MA's), (Start: 16 @102639 has 4 MA's), (19, 102678), (20, 102681), (39, 102801), (44, 102837), (53, 102879), (56, 102903), (63, 102933), (65, 102948),

Gene: Cleatunium_183 Start: 100803, Stop: 101228, Start Num: 13

Candidate Starts for Cleatunium_183:

(Start: 13 @100803 has 182 MA's), (Start: 16 @100848 has 4 MA's), (20, 100890), (39, 101010), (44, 101046), (53, 101088), (56, 101112), (63, 101142), (65, 101157),

Gene: Colt_181 Start: 104085, Stop: 104510, Start Num: 13

Candidate Starts for Colt_181:

(Start: 13 @104085 has 182 MA's), (Start: 16 @104130 has 4 MA's), (20, 104172), (39, 104292), (44, 104328), (53, 104370), (56, 104394), (63, 104424), (65, 104439),

Gene: Concombre_194 Start: 103702, Stop: 104127, Start Num: 13

Candidate Starts for Concombre_194:

(Start: 13 @103702 has 182 MA's), (Start: 16 @103747 has 4 MA's), (20, 103789), (39, 103909), (44, 103945), (53, 103987), (56, 104011), (63, 104041), (65, 104056),

Gene: DTDevon_192 Start: 103086, Stop: 103511, Start Num: 13

Candidate Starts for DTDevon_192:

(Start: 13 @103086 has 182 MA's), (Start: 16 @103131 has 4 MA's), (20, 103173), (39, 103293), (44, 103329), (53, 103371), (56, 103395), (63, 103425), (65, 103440),

Gene: Daffodil_194 Start: 101873, Stop: 102298, Start Num: 13

Candidate Starts for Daffodil_194:

(Start: 13 @101873 has 182 MA's), (Start: 16 @101918 has 4 MA's), (20, 101960), (39, 102080), (44, 102116), (53, 102158), (56, 102182), (63, 102212), (65, 102227),

Gene: Dandelion_197 Start: 105408, Stop: 105833, Start Num: 13

Candidate Starts for Dandelion_197:

(Start: 13 @105408 has 182 MA's), (Start: 16 @105453 has 4 MA's), (20, 105495), (39, 105615), (44, 105651), (53, 105693), (56, 105717), (63, 105747), (65, 105762),

Gene: Darko_189 Start: 101287, Stop: 101712, Start Num: 13

Candidate Starts for Darko_189:

(Start: 13 @101287 has 182 MA's), (Start: 16 @101332 has 4 MA's), (20, 101374), (39, 101494), (44, 101530), (53, 101572), (56, 101596), (63, 101626), (65, 101641),

Gene: DeejaClivia_178 Start: 100243, Stop: 100668, Start Num: 13

Candidate Starts for DeejaClivia_178:

(Start: 13 @100243 has 182 MA's), (Start: 16 @100288 has 4 MA's), (20, 100330), (39, 100450), (44, 100486), (53, 100528), (56, 100552), (63, 100582), (65, 100597),

Gene: Delilah_188 Start: 101991, Stop: 102416, Start Num: 13

Candidate Starts for Delilah_188:

(Start: 13 @101991 has 182 MA's), (Start: 16 @102036 has 4 MA's), (20, 102078), (39, 102198), (44, 102234), (53, 102276), (56, 102300), (63, 102330), (65, 102345),

Gene: Delylah_191 Start: 101972, Stop: 102397, Start Num: 13

Candidate Starts for Delylah_191:

(Start: 13 @101972 has 182 MA's), (Start: 16 @102017 has 4 MA's), (20, 102059), (39, 102179), (44, 102215), (53, 102257), (56, 102281), (63, 102311), (65, 102326),

Gene: Demodog_195 Start: 103712, Stop: 104137, Start Num: 13

Candidate Starts for Demodog_195:

(Start: 13 @103712 has 182 MA's), (Start: 16 @103757 has 4 MA's), (20, 103799), (39, 103919), (44, 103955), (53, 103997), (56, 104021), (63, 104051), (65, 104066),

Gene: Derek_187 Start: 101614, Stop: 102039, Start Num: 13

Candidate Starts for Derek_187:

(Start: 13 @101614 has 182 MA's), (Start: 16 @101659 has 4 MA's), (20, 101701), (39, 101821), (44, 101857), (53, 101899), (56, 101923), (63, 101953), (65, 101968),

Gene: Dessert_187 Start: 100128, Stop: 100553, Start Num: 13

Candidate Starts for Dessert_187:

(Start: 13 @100128 has 182 MA's), (Start: 16 @100173 has 4 MA's), (19, 100212), (20, 100215), (39, 100335), (44, 100371), (53, 100413), (56, 100437), (63, 100467), (65, 100482),

Gene: Dietrick_180 Start: 100596, Stop: 101021, Start Num: 13

Candidate Starts for Dietrick_180:

(Start: 13 @100596 has 182 MA's), (Start: 16 @100641 has 4 MA's), (20, 100683), (39, 100803), (44, 100839), (53, 100881), (56, 100905), (63, 100935), (65, 100950),

Gene: DirtMonster_183 Start: 101356, Stop: 101781, Start Num: 13

Candidate Starts for DirtMonster_183:

(Start: 13 @101356 has 182 MA's), (Start: 16 @101401 has 4 MA's), (20, 101443), (39, 101563), (44, 101599), (53, 101641), (54, 101653), (56, 101665), (63, 101695), (65, 101710),

Gene: Domi_184 Start: 101638, Stop: 102063, Start Num: 13

Candidate Starts for Domi_184:

(Start: 13 @101638 has 182 MA's), (Start: 16 @101683 has 4 MA's), (20, 101725), (39, 101845), (44, 101881), (53, 101923), (56, 101947), (63, 101977), (65, 101992),

Gene: DrPhinkDaddy_187 Start: 102652, Stop: 103077, Start Num: 13

Candidate Starts for DrPhinkDaddy_187:

(Start: 13 @102652 has 182 MA's), (Start: 16 @102697 has 4 MA's), (20, 102739), (39, 102859), (44, 102895), (53, 102937), (56, 102961), (63, 102991), (65, 103006),

Gene: Drazdys_188 Start: 101629, Stop: 102054, Start Num: 13

Candidate Starts for Drazdys_188:

(Start: 13 @101629 has 182 MA's), (Start: 16 @101674 has 4 MA's), (20, 101716), (39, 101836), (44, 101872), (53, 101914), (56, 101938), (63, 101968), (65, 101983),

Gene: Duckfeet_184 Start: 101257, Stop: 101682, Start Num: 13

Candidate Starts for Duckfeet_184:

(Start: 13 @101257 has 182 MA's), (Start: 16 @101302 has 4 MA's), (19, 101341), (20, 101344), (39, 101464), (44, 101500), (53, 101542), (56, 101566), (63, 101596), (65, 101611),

Gene: E3_gp138 Start: 92319, Stop: 92711, Start Num: 12

Candidate Starts for E3_gp138:

(Start: 12 @92319 has 3 MA's), (15, 92367), (17, 92397), (18, 92409), (40, 92517), (48, 92559), (64, 92649),

Gene: ET08_178 Start: 100842, Stop: 101267, Start Num: 13

Candidate Starts for ET08_178:

(Start: 13 @100842 has 182 MA's), (Start: 16 @100887 has 4 MA's), (19, 100926), (20, 100929), (39, 101049), (44, 101085), (53, 101127), (56, 101151), (63, 101181), (65, 101196),

Gene: EasyJones_194 Start: 102108, Stop: 102533, Start Num: 13

Candidate Starts for EasyJones_194:

(Start: 13 @102108 has 182 MA's), (Start: 16 @102153 has 4 MA's), (20, 102195), (39, 102315), (44, 102351), (53, 102393), (56, 102417), (63, 102447), (65, 102462),

Gene: EggyFarm_198 Start: 104172, Stop: 104597, Start Num: 13

Candidate Starts for EggyFarm_198:

(Start: 13 @104172 has 182 MA's), (Start: 16 @104217 has 4 MA's), (20, 104259), (39, 104379), (44, 104415), (53, 104457), (56, 104481), (63, 104511), (65, 104526),

Gene: EmToTheThree_191 Start: 102508, Stop: 102933, Start Num: 13

Candidate Starts for EmToTheThree_191:

(Start: 13 @102508 has 182 MA's), (Start: 16 @102553 has 4 MA's), (20, 102595), (39, 102715), (44, 102751), (53, 102793), (56, 102817), (63, 102847), (65, 102862),

Gene: EmmaElysia_193 Start: 102119, Stop: 102544, Start Num: 13

Candidate Starts for EmmaElysia_193:

(Start: 13 @102119 has 182 MA's), (Start: 16 @102164 has 4 MA's), (20, 102206), (39, 102326), (44, 102362), (53, 102404), (56, 102428), (63, 102458), (65, 102473),

Gene: Erdmann_191 Start: 101983, Stop: 102408, Start Num: 13

Candidate Starts for Erdmann_191:

(Start: 13 @101983 has 182 MA's), (Start: 16 @102028 has 4 MA's), (20, 102070), (39, 102190), (44, 102226), (53, 102268), (56, 102292), (63, 102322), (65, 102337),

Gene: ErnieJ_183 Start: 100288, Stop: 100713, Start Num: 13

Candidate Starts for ErnieJ_183:

(Start: 13 @100288 has 182 MA's), (Start: 16 @100333 has 4 MA's), (20, 100375), (39, 100495), (44, 100531), (53, 100573), (56, 100597), (63, 100627), (65, 100642),

Gene: Essence_187 Start: 100841, Stop: 101266, Start Num: 13

Candidate Starts for Essence_187:

(Start: 13 @100841 has 182 MA's), (Start: 16 @100886 has 4 MA's), (20, 100928), (39, 101048), (44, 101084), (53, 101126), (56, 101150), (63, 101180), (65, 101195),

Gene: Ewok_189 Start: 101902, Stop: 102327, Start Num: 13

Candidate Starts for Ewok_189:

(Start: 13 @101902 has 182 MA's), (Start: 16 @101947 has 4 MA's), (20, 101989), (39, 102109), (44, 102145), (53, 102187), (56, 102211), (63, 102241), (65, 102256),

Gene: Finch_62 Start: 54731, Stop: 55159, Start Num: 12

Candidate Starts for Finch_62:

(Start: 12 @54731 has 3 MA's), (22, 54833), (25, 54854), (30, 54887), (35, 54902), (36, 54905), (37, 54908), (38, 54920), (43, 54944), (44, 54953), (45, 54956), (46, 54959), (52, 54989), (54, 55007), (57, 55022), (59, 55031), (60, 55034),

Gene: Fixie_189 Start: 101237, Stop: 101662, Start Num: 13

Candidate Starts for Fixie_189:

(Start: 13 @101237 has 182 MA's), (Start: 16 @101282 has 4 MA's), (19, 101321), (20, 101324), (39, 101444), (44, 101480), (53, 101522), (56, 101546), (63, 101576), (65, 101591),

Gene: Flabslab_186 Start: 100430, Stop: 100855, Start Num: 13

Candidate Starts for Flabslab_186:

(Start: 13 @100430 has 182 MA's), (Start: 16 @100475 has 4 MA's), (20, 100517), (39, 100637), (44, 100673), (53, 100715), (56, 100739), (63, 100769), (65, 100784),

Gene: Fludd_191 Start: 101821, Stop: 102246, Start Num: 13

Candidate Starts for Fludd_191:

(Start: 13 @101821 has 182 MA's), (Start: 16 @101866 has 4 MA's), (20, 101908), (39, 102028), (44, 102064), (53, 102106), (56, 102130), (63, 102160), (65, 102175),

Gene: Fongie_191 Start: 102000, Stop: 102425, Start Num: 13

Candidate Starts for Fongie_191:

(Start: 13 @102000 has 182 MA's), (Start: 16 @102045 has 4 MA's), (20, 102087), (39, 102207), (44, 102243), (53, 102285), (56, 102309), (63, 102339), (65, 102354),

Gene: FoxtrotP1_188 Start: 102483, Stop: 102908, Start Num: 13

Candidate Starts for FoxtrotP1_188:

(Start: 13 @102483 has 182 MA's), (Start: 16 @102528 has 4 MA's), (20, 102570), (39, 102690), (44, 102726), (53, 102768), (56, 102792), (63, 102822), (65, 102837),

Gene: FrayBell_193 Start: 101606, Stop: 102031, Start Num: 13

Candidate Starts for FrayBell_193:

(Start: 13 @101606 has 182 MA's), (Start: 16 @101651 has 4 MA's), (20, 101693), (39, 101813), (44, 101849), (53, 101891), (56, 101915), (63, 101945), (65, 101960),

Gene: FudgeTart_185 Start: 101049, Stop: 101474, Start Num: 13

Candidate Starts for FudgeTart_185:

(Start: 13 @101049 has 182 MA's), (Start: 16 @101094 has 4 MA's), (20, 101136), (39, 101256), (44, 101292), (53, 101334), (56, 101358), (63, 101388), (65, 101403),

Gene: Gabriel_193 Start: 100579, Stop: 101004, Start Num: 13

Candidate Starts for Gabriel_193:

(Start: 13 @100579 has 182 MA's), (Start: 16 @100624 has 4 MA's), (20, 100666), (39, 100786), (44, 100822), (53, 100864), (56, 100888), (63, 100918), (65, 100933),

Gene: Gamgam_190 Start: 100552, Stop: 100977, Start Num: 13

Candidate Starts for Gamgam_190:

(Start: 13 @100552 has 182 MA's), (Start: 16 @100597 has 4 MA's), (19, 100636), (20, 100639), (39, 100759), (44, 100795), (53, 100837), (56, 100861), (63, 100891), (65, 100906),

Gene: Ghost_190 Start: 101265, Stop: 101690, Start Num: 13

Candidate Starts for Ghost_190:

(Start: 13 @101265 has 182 MA's), (Start: 16 @101310 has 4 MA's), (20, 101352), (39, 101472), (44, 101508), (53, 101550), (56, 101574), (63, 101604), (65, 101619),

Gene: Gizmo_195 Start: 103900, Stop: 104325, Start Num: 13

Candidate Starts for Gizmo_195:

(Start: 13 @103900 has 182 MA's), (Start: 16 @103945 has 4 MA's), (20, 103987), (39, 104107), (44, 104143), (53, 104185), (56, 104209), (63, 104239), (65, 104254),

Gene: GlutenPhree_190 Start: 100563, Stop: 100988, Start Num: 13

Candidate Starts for GlutenPhree_190:

(Start: 13 @100563 has 182 MA's), (Start: 16 @100608 has 4 MA's), (19, 100647), (20, 100650), (39, 100770), (44, 100806), (53, 100848), (56, 100872), (63, 100902), (65, 100917),

Gene: Grasshills_197 Start: 104171, Stop: 104596, Start Num: 13

Candidate Starts for Grasshills_197:

(Start: 13 @104171 has 182 MA's), (Start: 16 @104216 has 4 MA's), (20, 104258), (39, 104378), (44, 104414), (53, 104456), (56, 104480), (63, 104510), (65, 104525),

Gene: Greely_182 Start: 99482, Stop: 99877, Start Num: 13

Candidate Starts for Greely_182:

(Start: 11 @99476 has 2 MA's), (Start: 13 @99482 has 182 MA's), (42, 99725), (44, 99743), (53, 99785), (55, 99803), (58, 99818), (59, 99821), (61, 99830),

Gene: Grungle_175 Start: 99302, Stop: 99727, Start Num: 13

Candidate Starts for Grungle_175:

(Start: 13 @99302 has 182 MA's), (Start: 16 @99347 has 4 MA's), (19, 99386), (20, 99389), (39, 99509), (44, 99545), (53, 99587), (56, 99611), (63, 99641), (65, 99656),

Gene: Guwapp_185 Start: 99793, Stop: 100218, Start Num: 13

Candidate Starts for Guwapp_185:

(Start: 13 @99793 has 182 MA's), (Start: 16 @99838 has 4 MA's), (19, 99877), (20, 99880), (39, 100000), (44, 100036), (53, 100078), (56, 100102), (63, 100132), (65, 100147),

Gene: Halldule_182 Start: 99698, Stop: 100123, Start Num: 13

Candidate Starts for Halldule_182:

(Start: 13 @99698 has 182 MA's), (Start: 16 @99743 has 4 MA's), (20, 99785), (39, 99905), (44, 99941), (53, 99983), (56, 100007), (63, 100037), (65, 100052),

Gene: HyRo_178 Start: 101299, Stop: 101724, Start Num: 13

Candidate Starts for HyRo_178:

(Start: 13 @101299 has 182 MA's), (Start: 16 @101344 has 4 MA's), (20, 101386), (39, 101506), (44, 101542), (53, 101584), (56, 101608), (63, 101638), (65, 101653),

Gene: I3_198 Start: 103252, Stop: 103677, Start Num: 13

Candidate Starts for I3_198:

(Start: 13 @103252 has 182 MA's), (Start: 16 @103297 has 4 MA's), (20, 103339), (39, 103459), (44, 103495), (53, 103537), (56, 103561), (63, 103591), (65, 103606),

Gene: IkeLoa_182 Start: 100598, Stop: 101023, Start Num: 13

Candidate Starts for IkeLoa_182:

(Start: 13 @100598 has 182 MA's), (Start: 16 @100643 has 4 MA's), (20, 100685), (39, 100805), (44, 100841), (53, 100883), (56, 100907), (63, 100937), (65, 100952),

Gene: InigoMontoya_192 Start: 101226, Stop: 101651, Start Num: 13

Candidate Starts for InigoMontoya_192:

(Start: 13 @101226 has 182 MA's), (Start: 16 @101271 has 4 MA's), (19, 101310), (20, 101313), (39, 101433), (44, 101469), (53, 101511), (56, 101535), (63, 101565), (65, 101580),

Gene: InterFolia_193 Start: 103310, Stop: 103735, Start Num: 13

Candidate Starts for InterFolia_193:

(Start: 13 @103310 has 182 MA's), (Start: 16 @103355 has 4 MA's), (20, 103397), (39, 103517), (44, 103553), (53, 103595), (56, 103619), (63, 103649), (65, 103664),

Gene: Iota_184 Start: 100899, Stop: 101324, Start Num: 13

Candidate Starts for Iota_184:

(Start: 13 @100899 has 182 MA's), (Start: 16 @100944 has 4 MA's), (20, 100986), (39, 101106), (44, 101142), (53, 101184), (56, 101208), (63, 101238), (65, 101253),

Gene: Issimir_184 Start: 101173, Stop: 101598, Start Num: 13

Candidate Starts for Issimir_184:

(Start: 13 @101173 has 182 MA's), (Start: 16 @101218 has 4 MA's), (20, 101260), (39, 101380), (44, 101416), (53, 101458), (56, 101482), (63, 101512), (65, 101527),

Gene: Izajani_188 Start: 102042, Stop: 102467, Start Num: 13

Candidate Starts for Izajani_188:

(Start: 13 @102042 has 182 MA's), (Start: 16 @102087 has 4 MA's), (20, 102129), (39, 102249), (44, 102285), (53, 102327), (56, 102351), (63, 102381), (65, 102396),

Gene: JPickles_186 Start: 99694, Stop: 100119, Start Num: 13

Candidate Starts for JPickles_186:

(Start: 13 @99694 has 182 MA's), (Start: 16 @99739 has 4 MA's), (19, 99778), (20, 99781), (39, 99901), (44, 99937), (53, 99979), (56, 100003), (63, 100033), (65, 100048),

Gene: Janiyra_194 Start: 102243, Stop: 102668, Start Num: 13

Candidate Starts for Janiyra_194:

(Start: 13 @102243 has 182 MA's), (Start: 16 @102288 has 4 MA's), (20, 102330), (39, 102450), (44, 102486), (53, 102528), (56, 102552), (63, 102582), (65, 102597),

Gene: JayJay_192 Start: 102457, Stop: 102882, Start Num: 13

Candidate Starts for JayJay_192:

(Start: 13 @102457 has 182 MA's), (Start: 16 @102502 has 4 MA's), (20, 102544), (39, 102664), (44, 102700), (53, 102742), (56, 102766), (63, 102796), (65, 102811),

Gene: Jaygup_186 Start: 100656, Stop: 101081, Start Num: 13

Candidate Starts for Jaygup_186:

(Start: 13 @100656 has 182 MA's), (Start: 16 @100701 has 4 MA's), (20, 100743), (39, 100863), (44, 100899), (53, 100941), (56, 100965), (63, 100995), (65, 101010),

Gene: JeanGrey_62 Start: 50374, Stop: 50751, Start Num: 13

Candidate Starts for JeanGrey_62:

(Start: 13 @50374 has 182 MA's), (24, 50485), (34, 50542), (45, 50602), (49, 50617), (51, 50629),

Gene: Jedediah_190 Start: 101811, Stop: 102236, Start Num: 13

Candidate Starts for Jedediah_190:

(Start: 13 @101811 has 182 MA's), (Start: 16 @101856 has 4 MA's), (19, 101895), (20, 101898), (39, 102018), (44, 102054), (53, 102096), (56, 102120), (63, 102150), (65, 102165),

Gene: Jemmno_189 Start: 100637, Stop: 101062, Start Num: 13

Candidate Starts for Jemmno_189:

(Start: 13 @100637 has 182 MA's), (Start: 16 @100682 has 4 MA's), (20, 100724), (39, 100844), (44, 100880), (53, 100922), (56, 100946), (63, 100976), (65, 100991),

Gene: Jessibeth14_190 Start: 102651, Stop: 103076, Start Num: 13

Candidate Starts for Jessibeth14_190:

(Start: 13 @102651 has 182 MA's), (Start: 16 @102696 has 4 MA's), (20, 102738), (39, 102858), (44, 102894), (53, 102936), (56, 102960), (63, 102990), (65, 103005),

Gene: Jezreel_187 Start: 101720, Stop: 102145, Start Num: 13

Candidate Starts for Jezreel_187:

(Start: 13 @101720 has 182 MA's), (Start: 16 @101765 has 4 MA's), (20, 101807), (39, 101927), (44, 101963), (53, 102005), (56, 102029), (63, 102059), (65, 102074),

Gene: JigglyPuff_196 Start: 103580, Stop: 104005, Start Num: 13

Candidate Starts for JigglyPuff_196:

(Start: 13 @103580 has 182 MA's), (Start: 16 @103625 has 4 MA's), (20, 103667), (39, 103787), (44, 103823), (53, 103865), (56, 103889), (63, 103919), (65, 103934),

Gene: JulietS_181 Start: 98926, Stop: 99351, Start Num: 13

Candidate Starts for JulietS_181:

(Start: 13 @98926 has 182 MA's), (Start: 16 @98971 has 4 MA's), (19, 99010), (20, 99013), (39, 99133), (44, 99169), (53, 99211), (63, 99265), (65, 99280),

Gene: JustHall_185 Start: 101150, Stop: 101575, Start Num: 13

Candidate Starts for JustHall_185:

(Start: 13 @101150 has 182 MA's), (Start: 16 @101195 has 4 MA's), (19, 101234), (20, 101237), (39, 101357), (44, 101393), (53, 101435), (56, 101459), (63, 101489), (65, 101504),

Gene: Kamryn_189 Start: 102372, Stop: 102797, Start Num: 13

Candidate Starts for Kamryn_189:

(Start: 13 @102372 has 182 MA's), (Start: 16 @102417 has 4 MA's), (20, 102459), (39, 102579), (44, 102615), (53, 102657), (56, 102681), (63, 102711), (65, 102726),

Gene: Kboogie_194 Start: 101808, Stop: 102233, Start Num: 13

Candidate Starts for Kboogie_194:

(Start: 13 @101808 has 182 MA's), (Start: 16 @101853 has 4 MA's), (20, 101895), (39, 102015), (44, 102051), (53, 102093), (56, 102117), (63, 102147), (65, 102162),

Gene: Khaleesi_189 Start: 102118, Stop: 102543, Start Num: 13

Candidate Starts for Khaleesi_189:

(Start: 13 @102118 has 182 MA's), (Start: 16 @102163 has 4 MA's), (20, 102205), (39, 102325), (44, 102361), (53, 102403), (56, 102427), (63, 102457), (65, 102472),

Gene: Koguma_188 Start: 100675, Stop: 101100, Start Num: 13

Candidate Starts for Koguma_188:

(Start: 13 @100675 has 182 MA's), (Start: 16 @100720 has 4 MA's), (19, 100759), (20, 100762), (39, 100882), (44, 100918), (53, 100960), (56, 100984), (63, 101014), (65, 101029),

Gene: LRRHood_183 Start: 101020, Stop: 101445, Start Num: 13

Candidate Starts for LRRHood_183:

(Start: 13 @101020 has 182 MA's), (Start: 16 @101065 has 4 MA's), (19, 101104), (20, 101107), (39, 101227), (44, 101263), (53, 101305), (56, 101329), (63, 101359), (65, 101374),

Gene: Labradorite_188 Start: 100250, Stop: 100675, Start Num: 13

Candidate Starts for Labradorite_188:

(Start: 13 @100250 has 182 MA's), (Start: 16 @100295 has 4 MA's), (20, 100337), (39, 100457), (44, 100493), (53, 100535), (56, 100559), (63, 100589), (65, 100604),

Gene: Latch_189 Start: 100562, Stop: 100987, Start Num: 13

Candidate Starts for Latch_189:

(Start: 13 @100562 has 182 MA's), (Start: 16 @100607 has 4 MA's), (19, 100646), (20, 100649), (39, 100769), (44, 100805), (53, 100847), (56, 100871), (63, 100901), (65, 100916),

Gene: Lee7_190 Start: 103498, Stop: 103923, Start Num: 13

Candidate Starts for Lee7_190:

(Start: 13 @103498 has 182 MA's), (Start: 16 @103543 has 4 MA's), (20, 103585), (39, 103705), (44, 103741), (53, 103783), (56, 103807), (63, 103837), (65, 103852),

Gene: Lethe_190 Start: 102761, Stop: 103186, Start Num: 13

Candidate Starts for Lethe_190:

(Start: 13 @102761 has 182 MA's), (Start: 16 @102806 has 4 MA's), (20, 102848), (39, 102968), (44, 103004), (53, 103046), (56, 103070), (63, 103100), (65, 103115),

Gene: LifeSavor_189 Start: 101471, Stop: 101896, Start Num: 13

Candidate Starts for LifeSavor_189:

(Start: 13 @101471 has 182 MA's), (Start: 16 @101516 has 4 MA's), (20, 101558), (39, 101678), (44, 101714), (53, 101756), (56, 101780), (63, 101810), (65, 101825),

Gene: LinStu_188 Start: 101616, Stop: 102041, Start Num: 13

Candidate Starts for LinStu_188:

(Start: 13 @101616 has 182 MA's), (Start: 16 @101661 has 4 MA's), (20, 101703), (39, 101823), (44, 101859), (53, 101901), (56, 101925), (63, 101955), (65, 101970),

Gene: Littleton_193 Start: 102282, Stop: 102707, Start Num: 13

Candidate Starts for Littleton_193:

(Start: 13 @102282 has 182 MA's), (Start: 16 @102327 has 4 MA's), (20, 102369), (39, 102489), (44, 102525), (53, 102567), (56, 102591), (63, 102621), (65, 102636),

Gene: Loanshark_187 Start: 101433, Stop: 101858, Start Num: 13

Candidate Starts for Loanshark_187:

(Start: 13 @101433 has 182 MA's), (Start: 16 @101478 has 4 MA's), (20, 101520), (39, 101640), (44, 101676), (53, 101718), (56, 101742), (63, 101772), (65, 101787),

Gene: LolaVinca_188 Start: 102842, Stop: 103267, Start Num: 13

Candidate Starts for LolaVinca_188:

(Start: 13 @102842 has 182 MA's), (Start: 16 @102887 has 4 MA's), (20, 102929), (39, 103049), (44, 103085), (53, 103127), (56, 103151), (63, 103181), (65, 103196),

Gene: LookingGlass_189 Start: 101700, Stop: 102125, Start Num: 13

Candidate Starts for LookingGlass_189:

(Start: 13 @101700 has 182 MA's), (Start: 16 @101745 has 4 MA's), (20, 101787), (39, 101907), (44, 101943), (53, 101985), (56, 102009), (63, 102039), (65, 102054),

Gene: LordLeafolot_191 Start: 102454, Stop: 102879, Start Num: 13

Candidate Starts for LordLeafolot_191:

(Start: 13 @102454 has 182 MA's), (Start: 16 @102499 has 4 MA's), (20, 102541), (39, 102661), (44, 102697), (53, 102739), (56, 102763), (63, 102793), (65, 102808),

Gene: Lukilu_180 Start: 102030, Stop: 102455, Start Num: 13

Candidate Starts for Lukilu_180:

(Start: 13 @102030 has 182 MA's), (Start: 16 @102075 has 4 MA's), (19, 102114), (20, 102117), (39, 102237), (44, 102273), (53, 102315), (56, 102339), (63, 102369), (65, 102384),

Gene: Lunareta_189 Start: 103212, Stop: 103637, Start Num: 13

Candidate Starts for Lunareta_189:

(Start: 13 @103212 has 182 MA's), (Start: 16 @103257 has 4 MA's), (20, 103299), (39, 103419), (44, 103455), (53, 103497), (56, 103521), (63, 103551), (65, 103566),

Gene: Maby2021_189 Start: 102562, Stop: 102987, Start Num: 13

Candidate Starts for Maby2021_189:

(Start: 13 @102562 has 182 MA's), (Start: 16 @102607 has 4 MA's), (20, 102649), (39, 102769), (44, 102805), (53, 102847), (56, 102871), (63, 102901), (65, 102916),

Gene: Mangeria_190 Start: 102355, Stop: 102780, Start Num: 13

Candidate Starts for Mangeria_190:

(Start: 13 @102355 has 182 MA's), (Start: 16 @102400 has 4 MA's), (20, 102442), (39, 102562), (44, 102598), (53, 102640), (56, 102664), (63, 102694), (65, 102709),

Gene: Matsumoto_189 Start: 101796, Stop: 102221, Start Num: 13

Candidate Starts for Matsumoto_189:

(Start: 13 @101796 has 182 MA's), (Start: 16 @101841 has 4 MA's), (20, 101883), (39, 102003), (44, 102039), (53, 102081), (56, 102105), (63, 102135), (65, 102150),

Gene: Maturis_188 Start: 102068, Stop: 102493, Start Num: 13

Candidate Starts for Maturis_188:

(Start: 13 @102068 has 182 MA's), (Start: 16 @102113 has 4 MA's), (20, 102155), (39, 102275), (44, 102311), (53, 102353), (56, 102377), (63, 102407), (65, 102422),

Gene: McGee_190 Start: 100990, Stop: 101415, Start Num: 13

Candidate Starts for McGee_190:

(Start: 13 @100990 has 182 MA's), (Start: 16 @101035 has 4 MA's), (20, 101077), (39, 101197), (44, 101233), (53, 101275), (56, 101299), (63, 101329), (65, 101344),

Gene: McWolfish_187 Start: 101329, Stop: 101754, Start Num: 13

Candidate Starts for McWolfish_187:

(Start: 13 @101329 has 182 MA's), (Start: 16 @101374 has 4 MA's), (20, 101416), (39, 101536), (44, 101572), (53, 101614), (56, 101638), (63, 101668), (65, 101683),

Gene: Megamind_187 Start: 101620, Stop: 102045, Start Num: 13

Candidate Starts for Megamind_187:

(Start: 13 @101620 has 182 MA's), (Start: 16 @101665 has 4 MA's), (20, 101707), (39, 101827), (44, 101863), (53, 101905), (56, 101929), (63, 101959), (65, 101974),

Gene: Melpomini_184 Start: 100096, Stop: 100521, Start Num: 13

Candidate Starts for Melpomini_184:

(Start: 13 @100096 has 182 MA's), (Start: 16 @100141 has 4 MA's), (20, 100183), (39, 100303), (44, 100339), (53, 100381), (56, 100405), (63, 100435), (65, 100450),

Gene: MikeLiesIn_191 Start: 102756, Stop: 103181, Start Num: 13

Candidate Starts for MikeLiesIn_191:

(Start: 13 @102756 has 182 MA's), (Start: 16 @102801 has 4 MA's), (20, 102843), (39, 102963), (44, 102999), (53, 103041), (56, 103065), (63, 103095), (65, 103110),

Gene: Mikro_185 Start: 102996, Stop: 103421, Start Num: 13

Candidate Starts for Mikro_185:

(Start: 13 @102996 has 182 MA's), (Start: 16 @103041 has 4 MA's), (20, 103083), (39, 103203), (44, 103239), (53, 103281), (56, 103305), (63, 103335), (65, 103350),

Gene: MoMoMixon_188 Start: 101384, Stop: 101809, Start Num: 13

Candidate Starts for MoMoMixon_188:

(Start: 13 @101384 has 182 MA's), (Start: 16 @101429 has 4 MA's), (20, 101471), (39, 101591), (44, 101627), (53, 101669), (56, 101693), (63, 101723), (65, 101738),

Gene: Moby_186 Start: 100769, Stop: 101194, Start Num: 13

Candidate Starts for Moby_186:

(Start: 13 @100769 has 182 MA's), (Start: 16 @100814 has 4 MA's), (20, 100856), (39, 100976), (44, 101012), (53, 101054), (56, 101078), (63, 101108), (65, 101123),

Gene: Moiqah_185 Start: 100746, Stop: 101171, Start Num: 13

Candidate Starts for Moiqah_185:

(Start: 13 @100746 has 182 MA's), (Start: 16 @100791 has 4 MA's), (20, 100833), (39, 100953), (44, 100989), (53, 101031), (56, 101055), (63, 101085), (65, 101100),

Gene: Momo_190 Start: 100562, Stop: 100987, Start Num: 13

Candidate Starts for Momo_190:

(Start: 13 @100562 has 182 MA's), (Start: 16 @100607 has 4 MA's), (19, 100646), (20, 100649), (39, 100769), (44, 100805), (53, 100847), (56, 100871), (63, 100901), (65, 100916),

Gene: Montpel_189 Start: 103210, Stop: 103635, Start Num: 13

Candidate Starts for Montpel_189:

(Start: 13 @103210 has 182 MA's), (Start: 16 @103255 has 4 MA's), (20, 103297), (39, 103417), (44, 103453), (53, 103495), (56, 103519), (63, 103549), (65, 103564),

Gene: Morizzled23_188 Start: 100720, Stop: 101145, Start Num: 13

Candidate Starts for Morizzled23_188:

(Start: 13 @100720 has 182 MA's), (Start: 16 @100765 has 4 MA's), (20, 100807), (39, 100927), (44, 100963), (53, 101005), (56, 101029), (63, 101059), (65, 101074),

Gene: Myrna_177 Start: 99089, Stop: 99463, Start Num: 11

Candidate Starts for Myrna_177:

(Start: 11 @99089 has 2 MA's), (Start: 13 @99095 has 182 MA's), (32, 99263), (42, 99311), (43, 99320), (44, 99329), (50, 99356), (53, 99371), (55, 99389), (58, 99404), (59, 99407), (61, 99416), (64, 99434),

Gene: Naija_190 Start: 101265, Stop: 101690, Start Num: 13

Candidate Starts for Naija_190:

(Start: 13 @101265 has 182 MA's), (Start: 16 @101310 has 4 MA's), (19, 101349), (20, 101352), (39, 101472), (44, 101508), (53, 101550), (56, 101574), (63, 101604), (65, 101619),

Gene: Napoleon13_188 Start: 101085, Stop: 101510, Start Num: 13

Candidate Starts for Napoleon13_188:

(Start: 13 @101085 has 182 MA's), (Start: 16 @101130 has 4 MA's), (20, 101172), (39, 101292), (44, 101328), (53, 101370), (56, 101394), (63, 101424), (65, 101439),

Gene: Nappy_190 Start: 102967, Stop: 103392, Start Num: 13

Candidate Starts for Nappy_190:

(Start: 13 @102967 has 182 MA's), (Start: 16 @103012 has 4 MA's), (20, 103054), (39, 103174), (44, 103210), (53, 103252), (54, 103264), (56, 103276), (63, 103306), (65, 103321),

Gene: Naval22_197 Start: 103351, Stop: 103776, Start Num: 13

Candidate Starts for Naval22_197:

(Start: 13 @103351 has 182 MA's), (Start: 16 @103396 has 4 MA's), (20, 103438), (39, 103558), (44, 103594), (53, 103636), (56, 103660), (63, 103690), (65, 103705),

Gene: NedWong_189 Start: 102007, Stop: 102432, Start Num: 13

Candidate Starts for NedWong_189:

(Start: 13 @102007 has 182 MA's), (Start: 16 @102052 has 4 MA's), (20, 102094), (39, 102214), (44, 102250), (53, 102292), (56, 102316), (63, 102346), (65, 102361),

Gene: Ngannou_186 Start: 99544, Stop: 99969, Start Num: 13

Candidate Starts for Ngannou_186:

(Start: 13 @99544 has 182 MA's), (Start: 16 @99589 has 4 MA's), (19, 99628), (20, 99631), (39, 99751), (44, 99787), (53, 99829), (56, 99853), (63, 99883), (65, 99898),

Gene: Nidhogg_191 Start: 102400, Stop: 102825, Start Num: 13

Candidate Starts for Nidhogg_191:

(Start: 13 @102400 has 182 MA's), (Start: 16 @102445 has 4 MA's), (20, 102487), (39, 102607), (44, 102643), (53, 102685), (56, 102709), (63, 102739), (65, 102754),

Gene: NoodleTree_196 Start: 102307, Stop: 102732, Start Num: 13

Candidate Starts for NoodleTree_196:

(Start: 13 @102307 has 182 MA's), (Start: 16 @102352 has 4 MA's), (20, 102394), (39, 102514), (44, 102550), (53, 102592), (56, 102616), (63, 102646), (65, 102661),

Gene: Norm_189 Start: 102006, Stop: 102431, Start Num: 13

Candidate Starts for Norm_189:

(Start: 13 @102006 has 182 MA's), (Start: 16 @102051 has 4 MA's), (19, 102090), (20, 102093), (39, 102213), (44, 102249), (53, 102291), (56, 102315), (63, 102345), (65, 102360),

Gene: NuevoMundo_193 Start: 103936, Stop: 104361, Start Num: 13

Candidate Starts for NuevoMundo_193:

(Start: 13 @103936 has 182 MA's), (Start: 16 @103981 has 4 MA's), (20, 104023), (39, 104143), (44, 104179), (53, 104221), (56, 104245), (63, 104275), (65, 104290),

Gene: OrediggerDelux_186 Start: 102538, Stop: 102963, Start Num: 13

Candidate Starts for OrediggerDelux_186:

(Start: 13 @102538 has 182 MA's), (Start: 16 @102583 has 4 MA's), (20, 102625), (39, 102745), (44, 102781), (53, 102823), (56, 102847), (63, 102877), (65, 102892),

Gene: ParkTD_188 Start: 101870, Stop: 102295, Start Num: 13

Candidate Starts for ParkTD_188:

(Start: 13 @101870 has 182 MA's), (Start: 16 @101915 has 4 MA's), (20, 101957), (39, 102077), (44, 102113), (53, 102155), (56, 102179), (63, 102209), (65, 102224),

Gene: Patter_190 Start: 100579, Stop: 101004, Start Num: 13

Candidate Starts for Patter_190:

(Start: 13 @100579 has 182 MA's), (Start: 16 @100624 has 4 MA's), (19, 100663), (20, 100666), (39, 100786), (44, 100822), (53, 100864), (56, 100888), (63, 100918), (65, 100933),

Gene: Phabba_187 Start: 99098, Stop: 99466, Start Num: 13

Candidate Starts for Phabba_187:

(Start: 11 @99092 has 2 MA's), (Start: 13 @99098 has 182 MA's), (42, 99314), (44, 99332), (53, 99374), (55, 99392), (58, 99407), (59, 99410), (61, 99419), (64, 99437),

Gene: PharkleMinkus_192 Start: 101605, Stop: 102030, Start Num: 13

Candidate Starts for PharkleMinkus_192:

(Start: 13 @101605 has 182 MA's), (Start: 16 @101650 has 4 MA's), (20, 101692), (39, 101812), (44, 101848), (53, 101890), (56, 101914), (63, 101944), (65, 101959),

Gene: Phlegm_193 Start: 101265, Stop: 101690, Start Num: 13

Candidate Starts for Phlegm_193:

(Start: 13 @101265 has 182 MA's), (Start: 16 @101310 has 4 MA's), (19, 101349), (20, 101352), (39, 101472), (44, 101508), (53, 101550), (56, 101574), (63, 101604), (65, 101619),

Gene: Phox_190 Start: 102226, Stop: 102651, Start Num: 13

Candidate Starts for Phox_190:

(Start: 13 @102226 has 182 MA's), (Start: 16 @102271 has 4 MA's), (19, 102310), (20, 102313), (39, 102433), (44, 102469), (53, 102511), (56, 102535), (63, 102565), (65, 102580),

Gene: Phrappuccino_99 Start: 75207, Stop: 75617, Start Num: 14

Candidate Starts for Phrappuccino_99:

(2, 75018), (3, 75027), (4, 75060), (Start: 14 @75207 has 2 MA's), (27, 75327), (28, 75336), (33, 75360), (41, 75399), (44, 75423),

Gene: Phusco_189 Start: 100889, Stop: 101314, Start Num: 13

Candidate Starts for Phusco_189:

(Start: 13 @100889 has 182 MA's), (Start: 16 @100934 has 4 MA's), (20, 100976), (39, 101096), (44, 101132), (53, 101174), (56, 101198), (63, 101228), (65, 101243),

Gene: Pier_191 Start: 103478, Stop: 103903, Start Num: 13

Candidate Starts for Pier_191:

(Start: 13 @103478 has 182 MA's), (Start: 16 @103523 has 4 MA's), (20, 103565), (39, 103685), (44, 103721), (53, 103763), (56, 103787), (63, 103817), (65, 103832),

Gene: Pinkcreek_174 Start: 100781, Stop: 101206, Start Num: 13

Candidate Starts for Pinkcreek_174:

(Start: 13 @100781 has 182 MA's), (Start: 16 @100826 has 4 MA's), (20, 100868), (39, 100988), (44, 101024), (53, 101066), (56, 101090), (63, 101120), (65, 101135),

Gene: Pio_198 Start: 104673, Stop: 105098, Start Num: 13

Candidate Starts for Pio_198:

(Start: 13 @104673 has 182 MA's), (Start: 16 @104718 has 4 MA's), (20, 104760), (39, 104880), (44, 104916), (53, 104958), (56, 104982), (63, 105012), (65, 105027),

Gene: Pivoine_190 Start: 101265, Stop: 101690, Start Num: 13

Candidate Starts for Pivoine_190:

(Start: 13 @101265 has 182 MA's), (Start: 16 @101310 has 4 MA's), (19, 101349), (20, 101352), (39, 101472), (44, 101508), (53, 101550), (56, 101574), (63, 101604), (65, 101619),

Gene: Pleione_194 Start: 102349, Stop: 102774, Start Num: 13

Candidate Starts for Pleione_194:

(Start: 13 @102349 has 182 MA's), (Start: 16 @102394 has 4 MA's), (20, 102436), (39, 102556), (44, 102592), (53, 102634), (56, 102658), (63, 102688), (65, 102703),

Gene: Primadonna_184 Start: 100914, Stop: 101339, Start Num: 13
Candidate Starts for Primadonna_184:

(Start: 13 @100914 has 182 MA's), (Start: 16 @100959 has 4 MA's), (20, 101001), (39, 101121), (44, 101157), (53, 101199), (56, 101223), (63, 101253), (65, 101268),

Gene: Pupper_139 Start: 97195, Stop: 97575, Start Num: 16
Candidate Starts for Pupper_139:

(Start: 16 @97195 has 4 MA's), (21, 97240), (26, 97279), (27, 97312), (44, 97414), (47, 97423), (49, 97432), (50, 97441), (53, 97456), (54, 97468), (58, 97489), (63, 97510), (64, 97519),

Gene: Pupusa_194 Start: 103080, Stop: 103505, Start Num: 13
Candidate Starts for Pupusa_194:

(Start: 13 @103080 has 182 MA's), (Start: 16 @103125 has 4 MA's), (20, 103167), (39, 103287), (44, 103323), (53, 103365), (56, 103389), (63, 103419), (65, 103434),

Gene: PurduePete_190 Start: 102576, Stop: 103001, Start Num: 13
Candidate Starts for PurduePete_190:

(Start: 13 @102576 has 182 MA's), (Start: 16 @102621 has 4 MA's), (20, 102663), (39, 102783), (44, 102819), (53, 102861), (56, 102885), (63, 102915), (65, 102930),

Gene: QBert_181 Start: 100528, Stop: 100953, Start Num: 13
Candidate Starts for QBert_181:

(Start: 13 @100528 has 182 MA's), (Start: 16 @100573 has 4 MA's), (20, 100615), (39, 100735), (44, 100771), (53, 100813), (56, 100837), (63, 100867), (65, 100882),

Gene: Quasimodo_193 Start: 102683, Stop: 103108, Start Num: 13
Candidate Starts for Quasimodo_193:

(Start: 13 @102683 has 182 MA's), (Start: 16 @102728 has 4 MA's), (20, 102770), (39, 102890), (44, 102926), (53, 102968), (56, 102992), (63, 103022), (65, 103037),

Gene: Rabinovish_184 Start: 102956, Stop: 103381, Start Num: 13
Candidate Starts for Rabinovish_184:

(Start: 13 @102956 has 182 MA's), (Start: 16 @103001 has 4 MA's), (20, 103043), (39, 103163), (44, 103199), (53, 103241), (56, 103265), (63, 103295), (65, 103310),

Gene: Rahel_191 Start: 101483, Stop: 101908, Start Num: 13
Candidate Starts for Rahel_191:

(Start: 13 @101483 has 182 MA's), (Start: 16 @101528 has 4 MA's), (20, 101570), (39, 101690), (44, 101726), (53, 101768), (56, 101792), (63, 101822), (65, 101837),

Gene: RedWattleHog_63 Start: 61147, Stop: 61551, Start Num: 12
Candidate Starts for RedWattleHog_63:

(8, 61099), (9, 61108), (Start: 12 @61147 has 3 MA's), (37, 61330), (43, 61375), (44, 61384), (46, 61390), (55, 61444), (62, 61474),

Gene: Rizal_184 Start: 100310, Stop: 100735, Start Num: 13
Candidate Starts for Rizal_184:

(Start: 13 @100310 has 182 MA's), (Start: 16 @100355 has 4 MA's), (20, 100397), (39, 100517), (44, 100553), (53, 100595), (56, 100619), (63, 100649), (65, 100664),

Gene: RoMag_185 Start: 101794, Stop: 102219, Start Num: 13

Candidate Starts for RoMag_185:

(Start: 13 @101794 has 182 MA's), (Start: 16 @101839 has 4 MA's), (19, 101878), (20, 101881), (39, 102001), (44, 102037), (53, 102079), (56, 102103), (63, 102133), (65, 102148),

Gene: Rocha_187 Start: 101062, Stop: 101487, Start Num: 13

Candidate Starts for Rocha_187:

(Start: 13 @101062 has 182 MA's), (Start: 16 @101107 has 4 MA's), (20, 101149), (39, 101269), (44, 101305), (53, 101347), (56, 101371), (63, 101401), (65, 101416),

Gene: Ronan_185 Start: 99712, Stop: 100137, Start Num: 13

Candidate Starts for Ronan_185:

(Start: 13 @99712 has 182 MA's), (Start: 16 @99757 has 4 MA's), (19, 99796), (20, 99799), (39, 99919), (44, 99955), (53, 99997), (56, 100021), (63, 100051), (65, 100066),

Gene: Roots515_192 Start: 103128, Stop: 103553, Start Num: 13

Candidate Starts for Roots515_192:

(Start: 13 @103128 has 182 MA's), (Start: 16 @103173 has 4 MA's), (20, 103215), (39, 103335), (44, 103371), (53, 103413), (56, 103437), (63, 103467), (65, 103482),

Gene: SCentae_138 Start: 97346, Stop: 97726, Start Num: 16

Candidate Starts for SCentae_138:

(1, 97046), (Start: 16 @97346 has 4 MA's), (21, 97391), (26, 97430), (27, 97463), (32, 97496), (44, 97565), (47, 97574), (49, 97583), (53, 97607), (54, 97619), (58, 97640),

Gene: SVoro_186 Start: 102095, Stop: 102520, Start Num: 13

Candidate Starts for SVoro_186:

(Start: 13 @102095 has 182 MA's), (Start: 16 @102140 has 4 MA's), (20, 102182), (39, 102302), (44, 102338), (53, 102380), (56, 102404), (63, 102434), (65, 102449),

Gene: Salacia_190 Start: 101889, Stop: 102314, Start Num: 13

Candidate Starts for Salacia_190:

(Start: 13 @101889 has 182 MA's), (Start: 16 @101934 has 4 MA's), (20, 101976), (39, 102096), (44, 102132), (53, 102174), (56, 102198), (63, 102228), (65, 102243),

Gene: Sauce_186 Start: 100703, Stop: 101128, Start Num: 13

Candidate Starts for Sauce_186:

(Start: 13 @100703 has 182 MA's), (Start: 16 @100748 has 4 MA's), (20, 100790), (39, 100910), (44, 100946), (53, 100988), (56, 101012), (63, 101042), (65, 101057),

Gene: ScoobyDoobyDoo_173 Start: 96082, Stop: 96438, Start Num: 11

Candidate Starts for ScoobyDoobyDoo_173:

(10, 96076), (Start: 11 @96082 has 2 MA's), (Start: 16 @96127 has 4 MA's), (24, 96196), (29, 96226), (31, 96229), (42, 96286), (44, 96304), (47, 96313), (53, 96346), (54, 96358), (58, 96379), (59, 96382), (61, 96391),

Gene: ScottMcG_184 Start: 100333, Stop: 100758, Start Num: 13

Candidate Starts for ScottMcG_184:

(Start: 13 @100333 has 182 MA's), (Start: 16 @100378 has 4 MA's), (20, 100420), (39, 100540), (44, 100576), (53, 100618), (56, 100642), (63, 100672), (65, 100687),

Gene: Sebata_191 Start: 102801, Stop: 103226, Start Num: 13

Candidate Starts for Sebata_191:

(Start: 13 @102801 has 182 MA's), (Start: 16 @102846 has 4 MA's), (20, 102888), (39, 103008), (44, 103044), (53, 103086), (56, 103110), (63, 103140), (65, 103155),

Gene: Settecandela_99 Start: 75207, Stop: 75617, Start Num: 14

Candidate Starts for Settecandela_99:

(2, 75018), (3, 75027), (4, 75060), (Start: 14 @75207 has 2 MA's), (27, 75327), (28, 75336), (33, 75360), (41, 75399), (44, 75423),

Gene: Shaqnato_182 Start: 101226, Stop: 101651, Start Num: 13

Candidate Starts for Shaqnato_182:

(Start: 13 @101226 has 182 MA's), (Start: 16 @101271 has 4 MA's), (19, 101310), (20, 101313), (39, 101433), (44, 101469), (53, 101511), (56, 101535), (63, 101565), (65, 101580),

Gene: Shelob_191 Start: 103384, Stop: 103809, Start Num: 13

Candidate Starts for Shelob_191:

(Start: 13 @103384 has 182 MA's), (Start: 16 @103429 has 4 MA's), (20, 103471), (39, 103591), (44, 103627), (53, 103669), (56, 103693), (63, 103723), (65, 103738),

Gene: ShiaLabeouf_187 Start: 100694, Stop: 101119, Start Num: 13

Candidate Starts for ShiaLabeouf_187:

(Start: 13 @100694 has 182 MA's), (Start: 16 @100739 has 4 MA's), (19, 100778), (20, 100781), (39, 100901), (44, 100937), (53, 100979), (56, 101003), (63, 101033), (65, 101048),

Gene: Shnickers_188 Start: 100656, Stop: 101081, Start Num: 13

Candidate Starts for Shnickers_188:

(Start: 13 @100656 has 182 MA's), (Start: 16 @100701 has 4 MA's), (20, 100743), (39, 100863), (44, 100899), (53, 100941), (56, 100965), (63, 100995), (65, 101010),

Gene: Shrimp_191 Start: 102326, Stop: 102751, Start Num: 13

Candidate Starts for Shrimp_191:

(Start: 13 @102326 has 182 MA's), (Start: 16 @102371 has 4 MA's), (20, 102413), (39, 102533), (44, 102569), (53, 102611), (54, 102623), (56, 102635), (63, 102665), (65, 102680),

Gene: SilverDipper_193 Start: 101821, Stop: 102246, Start Num: 13

Candidate Starts for SilverDipper_193:

(Start: 13 @101821 has 182 MA's), (Start: 16 @101866 has 4 MA's), (19, 101905), (20, 101908), (39, 102028), (44, 102064), (53, 102106), (56, 102130), (63, 102160), (65, 102175),

Gene: Skog_200 Start: 126837, Stop: 127211, Start Num: 16

Candidate Starts for Skog_200:

(Start: 16 @126837 has 4 MA's), (26, 126921), (27, 126954), (30, 126972), (44, 127059), (49, 127077), (64, 127164),

Gene: SmallFry_190 Start: 100852, Stop: 101277, Start Num: 13

Candidate Starts for SmallFry_190:

(Start: 13 @100852 has 182 MA's), (Start: 16 @100897 has 4 MA's), (20, 100939), (39, 101059), (44, 101095), (53, 101137), (56, 101161), (63, 101191), (65, 101206),

Gene: SoilZilla_186 Start: 101711, Stop: 102136, Start Num: 13

Candidate Starts for SoilZilla_186:

(Start: 13 @101711 has 182 MA's), (Start: 16 @101756 has 4 MA's), (20, 101798), (39, 101918), (44, 101954), (53, 101996), (56, 102020), (63, 102050), (65, 102065),

Gene: Spec_185 Start: 101043, Stop: 101468, Start Num: 13

Candidate Starts for Spec_185:

(Start: 13 @101043 has 182 MA's), (Start: 16 @101088 has 4 MA's), (20, 101130), (39, 101250), (44, 101286), (53, 101328), (56, 101352), (63, 101382), (65, 101397),

Gene: Specks_194 Start: 103059, Stop: 103484, Start Num: 13

Candidate Starts for Specks_194:

(Start: 13 @103059 has 182 MA's), (Start: 16 @103104 has 4 MA's), (20, 103146), (39, 103266), (44, 103302), (53, 103344), (56, 103368), (63, 103398), (65, 103413),

Gene: Sprinklers_187 Start: 100930, Stop: 101355, Start Num: 13

Candidate Starts for Sprinklers_187:

(Start: 13 @100930 has 182 MA's), (Start: 16 @100975 has 4 MA's), (19, 101014), (20, 101017), (39, 101137), (44, 101173), (53, 101215), (63, 101269), (65, 101284),

Gene: Spud_186 Start: 101428, Stop: 101853, Start Num: 13

Candidate Starts for Spud_186:

(Start: 13 @101428 has 182 MA's), (Start: 16 @101473 has 4 MA's), (19, 101512), (20, 101515), (39, 101635), (44, 101671), (53, 101713), (56, 101737), (63, 101767), (65, 101782),

Gene: SrishMeg2525_187 Start: 102109, Stop: 102534, Start Num: 13

Candidate Starts for SrishMeg2525_187:

(Start: 13 @102109 has 182 MA's), (Start: 16 @102154 has 4 MA's), (20, 102196), (39, 102316), (44, 102352), (53, 102394), (56, 102418), (63, 102448), (65, 102463),

Gene: StephanieG_187 Start: 102623, Stop: 103048, Start Num: 13

Candidate Starts for StephanieG_187:

(Start: 13 @102623 has 182 MA's), (Start: 16 @102668 has 4 MA's), (20, 102710), (39, 102830), (44, 102866), (53, 102908), (56, 102932), (63, 102962), (65, 102977),

Gene: Stormageddon_60 Start: 61128, Stop: 61532, Start Num: 12

Candidate Starts for Stormageddon_60:

(8, 61080), (9, 61089), (Start: 12 @61128 has 3 MA's), (37, 61311), (43, 61356), (44, 61365), (46, 61371), (55, 61425), (62, 61455),

Gene: Stubby_175 Start: 101468, Stop: 101893, Start Num: 13

Candidate Starts for Stubby_175:

(Start: 13 @101468 has 182 MA's), (Start: 16 @101513 has 4 MA's), (20, 101555), (39, 101675), (44, 101711), (53, 101753), (56, 101777), (63, 101807), (65, 101822),

Gene: StubbySaigey_194 Start: 101355, Stop: 101780, Start Num: 13

Candidate Starts for StubbySaigey_194:

(Start: 13 @101355 has 182 MA's), (Start: 16 @101400 has 4 MA's), (20, 101442), (39, 101562), (44, 101598), (53, 101640), (56, 101664), (63, 101694), (65, 101709),

Gene: Substance289_187 Start: 100798, Stop: 101223, Start Num: 13

Candidate Starts for Substance289_187:

(Start: 13 @100798 has 182 MA's), (Start: 16 @100843 has 4 MA's), (19, 100882), (20, 100885), (39, 101005), (44, 101041), (53, 101083), (56, 101107), (63, 101137), (65, 101152),

Gene: Tainan_191 Start: 102180, Stop: 102605, Start Num: 13

Candidate Starts for Tainan_191:

(Start: 13 @102180 has 182 MA's), (Start: 16 @102225 has 4 MA's), (20, 102267), (39, 102387), (44, 102423), (53, 102465), (56, 102489), (63, 102519), (65, 102534),

Gene: Teardrop_187 Start: 100254, Stop: 100679, Start Num: 13
Candidate Starts for Teardrop_187:

(Start: 13 @100254 has 182 MA's), (Start: 16 @100299 has 4 MA's), (20, 100341), (39, 100461), (44, 100497), (53, 100539), (56, 100563), (63, 100593), (65, 100608),

Gene: TinyTim_188 Start: 100958, Stop: 101383, Start Num: 13
Candidate Starts for TinyTim_188:

(Start: 13 @100958 has 182 MA's), (Start: 16 @101003 has 4 MA's), (20, 101045), (39, 101165), (44, 101201), (53, 101243), (56, 101267), (63, 101297), (65, 101312),

Gene: Tonenili_209 Start: 106699, Stop: 107124, Start Num: 13
Candidate Starts for Tonenili_209:

(3, 106561), (5, 106606), (6, 106612), (7, 106645), (Start: 13 @106699 has 182 MA's), (Start: 16 @106744 has 4 MA's), (39, 106906), (44, 106942), (53, 106984), (54, 106996), (56, 107008), (65, 107053),

Gene: Tortoise16_188 Start: 101495, Stop: 101920, Start Num: 13
Candidate Starts for Tortoise16_188:

(Start: 13 @101495 has 182 MA's), (Start: 16 @101540 has 4 MA's), (20, 101582), (39, 101702), (44, 101738), (53, 101780), (56, 101804), (63, 101834), (65, 101849),

Gene: Trinitium_187 Start: 101188, Stop: 101613, Start Num: 13
Candidate Starts for Trinitium_187:

(Start: 13 @101188 has 182 MA's), (Start: 16 @101233 has 4 MA's), (19, 101272), (20, 101275), (39, 101395), (44, 101431), (53, 101473), (56, 101497), (63, 101527), (65, 101542),

Gene: Turret_184 Start: 100770, Stop: 101195, Start Num: 13
Candidate Starts for Turret_184:

(Start: 13 @100770 has 182 MA's), (Start: 16 @100815 has 4 MA's), (20, 100857), (39, 100977), (44, 101013), (53, 101055), (56, 101079), (63, 101109), (65, 101124),

Gene: Tyke_188 Start: 102862, Stop: 103287, Start Num: 13
Candidate Starts for Tyke_188:

(Start: 13 @102862 has 182 MA's), (Start: 16 @102907 has 4 MA's), (20, 102949), (39, 103069), (44, 103105), (53, 103147), (56, 103171), (63, 103201), (65, 103216),

Gene: ValleyTerrace_190 Start: 100562, Stop: 100987, Start Num: 13
Candidate Starts for ValleyTerrace_190:

(Start: 13 @100562 has 182 MA's), (Start: 16 @100607 has 4 MA's), (19, 100646), (20, 100649), (39, 100769), (44, 100805), (53, 100847), (56, 100871), (63, 100901), (65, 100916),

Gene: Vortrix_207 Start: 105485, Stop: 105910, Start Num: 13
Candidate Starts for Vortrix_207:

(3, 105347), (5, 105392), (6, 105398), (7, 105431), (Start: 13 @105485 has 182 MA's), (Start: 16 @105530 has 4 MA's), (39, 105692), (44, 105728), (53, 105770), (54, 105782), (56, 105794), (65, 105839),

Gene: Wally_190 Start: 101338, Stop: 101763, Start Num: 13
Candidate Starts for Wally_190:

(Start: 13 @101338 has 182 MA's), (Start: 16 @101383 has 4 MA's), (20, 101425), (39, 101545), (44, 101581), (53, 101623), (56, 101647), (63, 101677), (65, 101692),

Gene: Willis_190 Start: 101769, Stop: 102194, Start Num: 13

Candidate Starts for Willis_190:

(Start: 13 @101769 has 182 MA's), (Start: 16 @101814 has 4 MA's), (20, 101856), (39, 101976), (44, 102012), (53, 102054), (56, 102078), (63, 102108), (65, 102123),

Gene: Yassified_186 Start: 100910, Stop: 101335, Start Num: 13

Candidate Starts for Yassified_186:

(Start: 13 @100910 has 182 MA's), (Start: 16 @100955 has 4 MA's), (19, 100994), (20, 100997), (39, 101117), (44, 101153), (53, 101195), (56, 101219), (63, 101249), (65, 101264),

Gene: YemiJoy2021_190 Start: 102525, Stop: 102950, Start Num: 13

Candidate Starts for YemiJoy2021_190:

(Start: 13 @102525 has 182 MA's), (Start: 16 @102570 has 4 MA's), (20, 102612), (23, 102627), (39, 102732), (44, 102768), (53, 102810), (56, 102834), (63, 102864), (65, 102879),

Gene: YoungMoneyMata_189 Start: 101553, Stop: 101978, Start Num: 13

Candidate Starts for YoungMoneyMata_189:

(Start: 13 @101553 has 182 MA's), (Start: 16 @101598 has 4 MA's), (20, 101640), (39, 101760), (44, 101796), (53, 101838), (56, 101862), (63, 101892), (65, 101907),

Gene: Yucca_190 Start: 102516, Stop: 102941, Start Num: 13

Candidate Starts for Yucca_190:

(Start: 13 @102516 has 182 MA's), (Start: 16 @102561 has 4 MA's), (20, 102603), (39, 102723), (44, 102759), (53, 102801), (56, 102825), (63, 102855), (65, 102870),

Gene: Zalkecks_189 Start: 101598, Stop: 102023, Start Num: 13

Candidate Starts for Zalkecks_189:

(Start: 13 @101598 has 182 MA's), (Start: 16 @101643 has 4 MA's), (20, 101685), (39, 101805), (44, 101841), (53, 101883), (56, 101907), (63, 101937), (65, 101952),

Gene: Zeenon_192 Start: 102168, Stop: 102593, Start Num: 13

Candidate Starts for Zeenon_192:

(Start: 13 @102168 has 182 MA's), (Start: 16 @102213 has 4 MA's), (20, 102255), (39, 102375), (44, 102411), (53, 102453), (56, 102477), (63, 102507), (65, 102522),

Gene: ZygoTaiga_186 Start: 102789, Stop: 103214, Start Num: 13

Candidate Starts for ZygoTaiga_186:

(Start: 13 @102789 has 182 MA's), (Start: 16 @102834 has 4 MA's), (20, 102876), (39, 102996), (44, 103032), (53, 103074), (56, 103098), (63, 103128), (65, 103143),