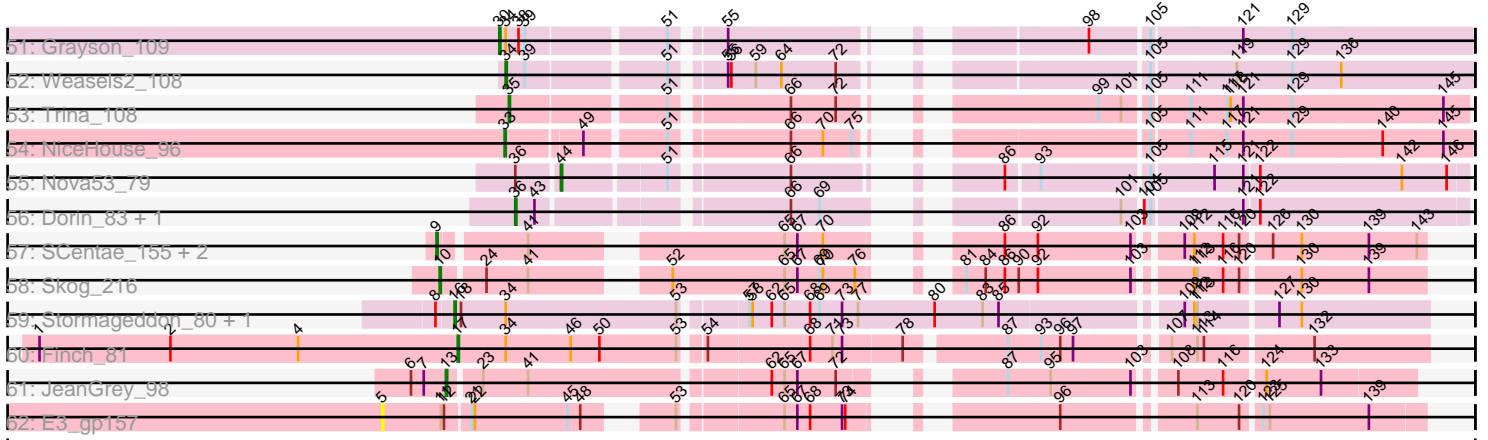


Pham 308048



Note: Tracks are now grouped by subcluster and scaled. Switching in subcluster is indicated by changes in track color. Track scale is now set by default to display the region 30 bp upstream of start 1 to 30 bp downstream of the last possible start. If this default region is judged to be packed too tightly with annotated starts, the track will be further scaled to only show that region of the ORF with annotated starts. This action will be indicated by adding "Zoomed" to the title. For starts, yellow indicates the location of called starts comprised solely of Glimmer/GeneMark auto-annotations, green indicates the location of called starts with at least 1 manual gene annotation.

Pham 308048 Report

This analysis was run 06/27/26 on database version 652.

Pham number 308048 has 200 members, 30 are drafts.

Phages represented in each track:

- Track 1 : Phrappuccino_125, Settecandela_125
- Track 2 : WashU_91, Samisti12_88, Scheme_89, Lululemon_87, ArianaSWT_91, Larnav_88, Cursive_86, PacManQ_87, Leo04_89, Watermoore_88, Tribute_86, Peebs_87, Coogler_88, HangryHippo_88, BlueOtter_88, EGole_89, Sushi23_87, Pepperwood_88, Cross_88
- Track 3 : Targaryen_88, Evy_88
- Track 4 : Daubenski_90, Cadmus_87
- Track 5 : Squillium_87, Davielle_86, Bartholomune_86, FreddyDRoo_85, PinkiePie_86, Braelyn_88, Liandry_86, WhereRU_85, Paradiddles_83, Eliot67_85, Navo_85, PynkPanther_92, Persimmon_86, NootNoot_83
- Track 6 : Jay2Jay_92, Warpy_91
- Track 7 : Marsus_86
- Track 8 : LilMartin_85, MulchMansion_85, Angela_85
- Track 9 : Mildred21_86
- Track 10 : Bmoc_86
- Track 11 : Shuckle_86
- Track 12 : Teutsch_88
- Track 13 : Anedea_87, LilSaint_86, Riptide_84
- Track 14 : AngryGiraffe_90, Sollertia_91, Genie2_91, BoomerJR_91, Stanimal_91, Yaboi_91
- Track 15 : Tomas_93
- Track 16 : CeilingFan_90, Starbow_89, Quaran19_90, TomSawyer_89, PumpkinSpice_90, Brizzy_90, Battuta_89, Spelly_91, Bordeaux_89, Rikishi_91, Gibbi_95, SaltySpitoon_90, Jollison_90, Spilled_92, Karimac_90, Wipeout_88, JimJam_91, KentuckyRacer_91
- Track 17 : Daisy123_94, IchabodCrane_88, Amabiko_91, MindFlayer_88, Birchlyn_88
- Track 18 : Enygma_91
- Track 19 : Elmer_93
- Track 20 : AcciDwight_94
- Track 21 : Wofford_90
- Track 22 : StarPlatinum_91
- Track 23 : LukeCage_90
- Track 24 : Mugiwara_90
- Track 25 : Blueeyedbeauty_71
- Track 26 : DeluluLabubu_71, Forrest_74, Emma1919_73, Jada_72, Maupel_71, Gilson_72

- Track 27 : Comrade_71, Westy_72, SparkleGoddess_71, Stigma_70, Belfort_73
- Track 28 : Phredrick_71, Kenrey_73
- Track 29 : Faust_73, SeresaTree_73
- Track 30 : TunaTartare_72
- Track 31 : Annadreamy_69, Limpid_68
- Track 32 : Karp_69
- Track 33 : Moab_71, Patelgo_71
- Track 34 : Sham_69
- Track 35 : MeganTheeKilla_70
- Track 36 : Francob_70
- Track 37 : Beuffert_69
- Track 38 : Chaewon_70
- Track 39 : Wakanda_67, Muntaha_68
- Track 40 : Circinus_67
- Track 41 : BillNye_66
- Track 42 : ErnieJ_207, Ablatia_213, Tainan_215, Concombre_219, I3_224, LordLeafolot_215, Blackbrain_211, Grasshills_222, Basquiat_211, EasyJones_217, LolaVinca_212, Belieber_207, LRRHood_207, Turret_207, ChickenPhender_210, Dandelion_222, BeanWater_206, Bigswole_219, PharkleMinkus_216, Specks_218, EggyFarm_223, Quasimodo_216, FrayBell_217, Demodog_220, Fludd_214, Cactojaque_209, Phox_215, QBert_206, Nappy_215, Chargie21_211, Bxz1_204, JigglyPuff_221, Trinitium_210, InterFolia_217, LinStu_213, Bezza_203, Pio_222, BigCity_223
- Track 43 : NuevoMundo_217, HyRo_202, ChaylaJr_212, Sebata_215, Pinkcreek_198, Shifa_191, Moby_210, DeejaClivia_202, Maturis_211, Pier_215, BackyardAgain_210, Stubby_198, JayJay_216, Lunareta_212, Montpel_212, Moiqah_209
- Track 44 : Cali_207
- Track 45 : Tonenili_236, Vortrix_234
- Track 46 : Alice_201, Flabslab_209, Rabinovish_207
- Track 47 : Phabba_207
- Track 48 : Greely_203
- Track 49 : Myrna_196
- Track 50 : Peregrin_106
- Track 51 : Grayson_109
- Track 52 : Weasels2_108
- Track 53 : Trina_108
- Track 54 : NiceHouse_96
- Track 55 : Nova53_79
- Track 56 : Dorin_83, Francesca_83
- Track 57 : SCentae_155, Pupper_156, CherryTomatoes_157
- Track 58 : Skog_216
- Track 59 : Stormageddon_80, RedWattleHog_83
- Track 60 : Finch_81
- Track 61 : JeanGrey_98
- Track 62 : E3_gp157

Summary of Final Annotations (See graph section above for start numbers):

The start number called the most often in the published annotations is 27, it was called in 56 of the 170 non-draft genes in the pham.

Genes that call this "Most Annotated" start:

- Amabiko_91, AngryGiraffe_90, Annadreamy_69, Battuta_89, Belfort_73, Beuffert_69, Birchlyn_88, Blueeyedbeauty_71, BoomerJR_91, Bordeaux_89, Brizzy_90, CeilingFan_90, Comrade_71, Daisy123_94, DeluluLabubu_71, Elmer_93, Emma1919_73, Enygma_91, Faust_73, Forrest_74, Francob_70, Genie2_91, Gibbi_95, Gilson_72, IchabodCrane_88, Jada_72, JimJam_91, Jollison_90, Karimac_90, Karp_69, Kenrey_73, KentuckyRacer_91, Limpid_68, LukeCage_90, Maupel_71, MeganTheeKilla_70, MindFlayer_88, Moab_71, Mugiwara_90, Patelgo_71, Phredrick_71, PumpkinSpice_90, Quarant19_90, Rikishi_91, SaltySpittoon_90, SeresaTree_73, Sollertia_91, SparkleGoddess_71, Spelly_91, Spilled_92, Stanimal_91, StarPlatinum_91, Starbow_89, Stigma_70, TomSawyer_89, Tomas_93, Westy_72, Wipeout_88, Wofford_90, Yaboi_91,

Genes that have the "Most Annotated" start but do not call it:

- AcciDwight_94,

Genes that do not have the "Most Annotated" start:

- Ablatia_213, Alice_201, Anedea_87, Angela_85, ArianaSWT_91, BackyardAgain_210, Bartholomune_86, Basquiat_211, BeanWater_206, Belieber_207, Bezza_203, BigCity_223, Bigswole_219, BillNye_66, Blackbrain_211, BlueOtter_88, Bmoc_86, Braelyn_88, Bxz1_204, Cactojaque_209, Cadmus_87, Cali_207, Chaewon_70, Chargie21_211, ChaylaJr_212, CherryTomatoes_157, ChickenPhender_210, Circinus_67, Concombre_219, Coogler_88, Cross_88, Cursive_86, Dandelion_222, Daubenski_90, Davielle_86, DeejaClivia_202, Demodog_220, Dorin_83, E3_gp157, EGole_89, EasyJones_217, EggFarm_223, Eliot67_85, ErnieJ_207, Evy_88, Finch_81, Flabslab_209, Fludd_214, Francesca_83, FrayBell_217, FreddyDRoo_85, Grasshills_222, Grayson_109, Greely_203, HangryHippo_88, HyRo_202, I3_224, InterFolia_217, Jay2Jay_92, JayJay_216, JeanGrey_98, JigglyPuff_221, LRRHood_207, Larnav_88, Leo04_89, Liandry_86, LilMartin_85, LilSaint_86, LinStu_213, LolaVinca_212, LordLeafolot_215, Lululemon_87, Lunareta_212, Marsus_86, Maturis_211, Mildred21_86, Moby_210, Moiqah_209, Montpel_212, MulchMansion_85, Muntaha_68, Myrna_196, Nappy_215, Navo_85, NiceHouse_96, NootNoot_83, Nova53_79, NuevoMundo_217, PacManQ_87, Paradiddles_83, Peebs_87, Pepperwood_88, Peregrin_106, Persimmon_86, Phabba_207, PharkleMinkus_216, Phox_215, Phrappuccino_125, Pier_215, Pinkcreek_198, PinkiePie_86, Pio_222, Pupper_156, PynkPanther_92, QBert_206, Quasimodo_216, Rabinovish_207, RedWattleHog_83, Riptide_84, SCentae_155, Samisti12_88, Scheme_89, Sebata_215, Settecandela_125, Sham_69, Shifa_191, Shuckle_86, Skog_216, Specks_218, Squillium_87, Stormageddon_80, Stubby_198, Sushi23_87, Tainan_215, Targaryen_88, Teutsch_88, Tonenili_236, Tribute_86, Trina_108, Trinitium_210, TunaTartare_72, Turret_207, Vortrix_234, Wakanda_67, Warpy_91, WashU_91, Watermoore_88, Weasels2_108, WhereRU_85,

Summary by start number:

Start 5:

- Found in 1 of 200 (0.5%) of genes in pham
- No Manual Annotations of this start.
- Called 100.0% of time when present

- Phage (with cluster) where this start called: E3_gp157 (singleton),

Start 8:

- Found in 65 of 200 (32.5%) of genes in pham
- Manual Annotations of this start: 45 of 170
- Called 96.9% of time when present
- Phage (with cluster) where this start called: Ablatia_213 (C1), Alice_201 (C1), BackyardAgain_210 (C1), Basquiat_211 (C1), BeanWater_206 (C1), Belieber_207 (C1), Bezza_203 (C1), BigCity_223 (C1), Bigswole_219 (C1), Blackbrain_211 (C1), Bxz1_204 (C1), Cactojaque_209 (C1), Cali_207 (C1), Chargie21_211 (C1), ChaylaJr_212 (C1), ChickenPhender_210 (C1), Concombre_219 (C1), Dandelion_222 (C1), DeejaClivia_202 (C1), Demodog_220 (C1), EasyJones_217 (C1), EggyFarm_223 (C1), ErnieJ_207 (C1), Flabslab_209 (C1), Fludd_214 (C1), FrayBell_217 (C1), Grasshills_222 (C1), Greely_203 (C2), HyRo_202 (C1), I3_224 (C1), InterFolia_217 (C1), JayJay_216 (C1), JigglyPuff_221 (C1), LRRHood_207 (C1), LinStu_213 (C1), LolaVinca_212 (C1), LordLeafolot_215 (C1), Lunareta_212 (C1), Maturis_211 (C1), Moby_210 (C1), Moiqah_209 (C1), Montpel_212 (C1), Myrna_196 (C2), Nappy_215 (C1), NuevoMundo_217 (C1), Phabba_207 (C2), PharkleMinkus_216 (C1), Phox_215 (C1), Pier_215 (C1), Pinkcreek_198 (C1), Pio_222 (C1), QBert_206 (C1), Quasimodo_216 (C1), Rabinovish_207 (C1), Sebata_215 (C1), Shifa_191 (C1), Specks_218 (C1), Stubby_198 (C1), Tainan_215 (C1), Tonenili_236 (C1), Trinitium_210 (C1), Turret_207 (C1), Vortex_234 (C1),

Start 9:

- Found in 3 of 200 (1.5%) of genes in pham
- Manual Annotations of this start: 3 of 170
- Called 100.0% of time when present
- Phage (with cluster) where this start called: CherryTomatoes_157 (DO), Pupper_156 (DO), SCentae_155 (DO),

Start 10:

- Found in 1 of 200 (0.5%) of genes in pham
- Manual Annotations of this start: 1 of 170
- Called 100.0% of time when present
- Phage (with cluster) where this start called: Skog_216 (DO),

Start 13:

- Found in 1 of 200 (0.5%) of genes in pham
- Manual Annotations of this start: 1 of 170
- Called 100.0% of time when present
- Phage (with cluster) where this start called: JeanGrey_98 (singleton),

Start 15:

- Found in 2 of 200 (1.0%) of genes in pham
- Manual Annotations of this start: 2 of 170
- Called 100.0% of time when present
- Phage (with cluster) where this start called: Phrappuccino_125 (AA), Settecandela_125 (AA),

Start 16:

- Found in 2 of 200 (1.0%) of genes in pham
- Manual Annotations of this start: 2 of 170
- Called 100.0% of time when present

- Phage (with cluster) where this start called: RedWattleHog_83 (DX), Stormageddon_80 (DX),

Start 17:

- Found in 1 of 200 (0.5%) of genes in pham
- Manual Annotations of this start: 1 of 170
- Called 100.0% of time when present
- Phage (with cluster) where this start called: Finch_81 (singleton),

Start 23:

- Found in 35 of 200 (17.5%) of genes in pham
- No Manual Annotations of this start.
- Called 2.9% of time when present
- Phage (with cluster) where this start called: AcciDwight_94 (BE2),

Start 26:

- Found in 2 of 200 (1.0%) of genes in pham
- Manual Annotations of this start: 2 of 170
- Called 100.0% of time when present
- Phage (with cluster) where this start called: Sham_69 (BK1), TunaTartare_72 (BK1),

Start 27:

- Found in 61 of 200 (30.5%) of genes in pham
- Manual Annotations of this start: 56 of 170
- Called 98.4% of time when present
- Phage (with cluster) where this start called: Amabiko_91 (BE2), AngryGiraffe_90 (BE2), Annadreamy_69 (BK1), Battuta_89 (BE2), Belfort_73 (BK1), Beuffert_69 (BK1), Birchlyn_88 (BE2), Blueeyedbeauty_71 (BK1), BoomerJR_91 (BE2), Bordeaux_89 (BE2), Brizzy_90 (BE2), CeilingFan_90 (BE2), Comrade_71 (BK1), Daisy123_94 (BE2), DeluluLabubu_71 (BK1), Elmer_93 (BE2), Emma1919_73 (BK1), Enygma_91 (BE2), Faust_73 (BK1), Forrest_74 (BK1), Francob_70 (BK1), Genie2_91 (BE2), Gibbi_95 (BE2), Gilson_72 (BK1), IchabodCrane_88 (BE2), Jada_72 (BK1), JimJam_91 (BE2), Jollison_90 (BE2), Karimac_90 (BE2), Karp_69 (BK1), Kenrey_73 (BK1), KentuckyRacer_91 (BE2), Limpid_68 (BK1), LukeCage_90 (BE2), MaupeI_71 (BK1), MeganTheeKilla_70 (BK1), MindFlayer_88 (BE2), Moab_71 (BK1), Mugiwara_90 (BE2), Patelgo_71 (BK1), Phredrick_71 (BK1), PumpkinSpice_90 (BE2), Quarant19_90 (BE2), Rikishi_91 (BE2), SaltySpittoon_90 (BE2), SeresaTree_73 (BK1), Sollertia_91 (BE2), SparkleGoddess_71 (BK1), Spelly_91 (BE2), Spilled_92 (BE2), Stanimal_91 (BE2), StarPlatinum_91 (BE2), Starbow_89 (BE2), Stigma_70 (BK1), TomSawyer_89 (BE2), Tomas_93 (BE2), Westy_72 (BK1), Wipeout_88 (BE2), Wofford_90 (BE2), Yaboi_91 (BE2),

Start 28:

- Found in 11 of 200 (5.5%) of genes in pham
- Manual Annotations of this start: 8 of 170
- Called 81.8% of time when present
- Phage (with cluster) where this start called: Angela_85 (BE1), BillNye_66 (BK2), Chaewon_70 (BK2), Circinus_67 (BK2), LilMartin_85 (BE1), Marsus_86 (BE1), MulchMansion_85 (BE1), Muntaha_68 (BK2), Wakanda_67 (BK2),

Start 29:

- Found in 2 of 200 (1.0%) of genes in pham
- Manual Annotations of this start: 2 of 170

- Called 100.0% of time when present
- Phage (with cluster) where this start called: Cadmus_87 (BE1), Daubenski_90 (BE1),

Start 30:

- Found in 8 of 200 (4.0%) of genes in pham
- Manual Annotations of this start: 6 of 170
- Called 75.0% of time when present
- Phage (with cluster) where this start called: Evy_88 (BE1), Grayson_109 (CB), Jay2Jay_92 (BE1), Peregrin_106 (CB), Targaryen_88 (BE1), Warpy_91 (BE1),

Start 31:

- Found in 36 of 200 (18.0%) of genes in pham
- Manual Annotations of this start: 31 of 170
- Called 100.0% of time when present
- Phage (with cluster) where this start called: ArianaSWT_91 (BE1), Bartholomune_86 (BE1), BlueOtter_88 (BE1), Braelyn_88 (BE1), Coogler_88 (BE1), Cross_88 (BE1), Cursive_86 (BE1), Davielle_86 (BE1), EGole_89 (BE1), Eliot67_85 (BE1), FreddyDRoo_85 (BE1), HangryHippo_88 (BE1), Larnav_88 (BE1), Leo04_89 (BE1), Liandry_86 (BE1), Lululemon_87 (BE1), Mildred21_86 (BE1), Navo_85 (BE1), NootNoot_83 (BE1), PacManQ_87 (BE1), Paradiddles_83 (BE1), Peebs_87 (BE1), Pepperwood_88 (BE1), Persimmon_86 (BE1), PinkiePie_86 (BE1), PynkPanther_92 (BE1), Samisti12_88 (BE1), Scheme_89 (BE1), Shuckle_86 (BE1), Squillium_87 (BE1), Sushi23_87 (BE1), Teutsch_88 (BE1), Tribute_86 (BE1), WashU_91 (BE1), Watermoore_88 (BE1), WhereRU_85 (BE1),

Start 32:

- Found in 4 of 200 (2.0%) of genes in pham
- Manual Annotations of this start: 4 of 170
- Called 100.0% of time when present
- Phage (with cluster) where this start called: Anedea_87 (BE1), Bmoc_86 (BE1), LilSaint_86 (BE1), Riptide_84 (BE1),

Start 33:

- Found in 1 of 200 (0.5%) of genes in pham
- Manual Annotations of this start: 1 of 170
- Called 100.0% of time when present
- Phage (with cluster) where this start called: NiceHouse_96 (CE),

Start 34:

- Found in 6 of 200 (3.0%) of genes in pham
- Manual Annotations of this start: 1 of 170
- Called 16.7% of time when present
- Phage (with cluster) where this start called: Weasels2_108 (CB),

Start 35:

- Found in 1 of 200 (0.5%) of genes in pham
- Manual Annotations of this start: 1 of 170
- Called 100.0% of time when present
- Phage (with cluster) where this start called: Trina_108 (CE),

Start 36:

- Found in 3 of 200 (1.5%) of genes in pham

- Manual Annotations of this start: 2 of 170
- Called 66.7% of time when present
- Phage (with cluster) where this start called: Dorin_83 (CG), Francesca_83 (CG),

Start 44:

- Found in 4 of 200 (2.0%) of genes in pham
- Manual Annotations of this start: 1 of 170
- Called 25.0% of time when present
- Phage (with cluster) where this start called: Nova53_79 (CG),

Summary by clusters:

There are 13 clusters represented in this pham: AA, DO, singleton, DX, CB, CG, CE, BK1, BK2, BE2, C2, C1, BE1,

Info for manual annotations of cluster AA:

- Start number 15 was manually annotated 2 times for cluster AA.

Info for manual annotations of cluster BE1:

- Start number 28 was manually annotated 4 times for cluster BE1.
- Start number 29 was manually annotated 2 times for cluster BE1.
- Start number 30 was manually annotated 4 times for cluster BE1.
- Start number 31 was manually annotated 31 times for cluster BE1.
- Start number 32 was manually annotated 4 times for cluster BE1.

Info for manual annotations of cluster BE2:

- Start number 27 was manually annotated 34 times for cluster BE2.

Info for manual annotations of cluster BK1:

- Start number 26 was manually annotated 2 times for cluster BK1.
- Start number 27 was manually annotated 22 times for cluster BK1.

Info for manual annotations of cluster BK2:

- Start number 28 was manually annotated 4 times for cluster BK2.

Info for manual annotations of cluster C1:

- Start number 8 was manually annotated 43 times for cluster C1.

Info for manual annotations of cluster C2:

- Start number 8 was manually annotated 2 times for cluster C2.

Info for manual annotations of cluster CB:

- Start number 30 was manually annotated 2 times for cluster CB.
- Start number 34 was manually annotated 1 time for cluster CB.

Info for manual annotations of cluster CE:

- Start number 33 was manually annotated 1 time for cluster CE.
- Start number 35 was manually annotated 1 time for cluster CE.

Info for manual annotations of cluster CG:

- Start number 36 was manually annotated 2 times for cluster CG.
- Start number 44 was manually annotated 1 time for cluster CG.

Info for manual annotations of cluster DO:

- Start number 9 was manually annotated 3 times for cluster DO.
- Start number 10 was manually annotated 1 time for cluster DO.

Info for manual annotations of cluster DX:

- Start number 16 was manually annotated 2 times for cluster DX.

Gene Information:

Gene: Ablatia_213 Start: 118742, Stop: 119512, Start Num: 8

Candidate Starts for Ablatia_213:

(Start: 8 @118742 has 45 MA's), (53, 118922), (65, 119006), (67, 119018), (69, 119039), (70, 119042), (73, 119060), (85, 119135), (91, 119168), (112, 119297), (116, 119324), (120, 119339), (130, 119390), (134, 119417), (138, 119435), (139, 119453), (143, 119498),

Gene: AcciDwight_94 Start: 64659, Stop: 65441, Start Num: 23

Candidate Starts for AcciDwight_94:

(23, 64659), (Start: 27 @64668 has 56 MA's), (66, 64911), (88, 65037), (92, 65058), (105, 65157), (121, 65238), (129, 65283), (146, 65424), (147, 65430),

Gene: Alice_201 Start: 117941, Stop: 118711, Start Num: 8

Candidate Starts for Alice_201:

(Start: 8 @117941 has 45 MA's), (53, 118121), (65, 118205), (67, 118217), (69, 118238), (70, 118241), (73, 118259), (75, 118268), (85, 118334), (91, 118367), (95, 118382), (112, 118496), (116, 118523), (120, 118538), (130, 118589), (134, 118616), (138, 118634), (139, 118652), (143, 118697),

Gene: Amabiko_91 Start: 64713, Stop: 65486, Start Num: 27

Candidate Starts for Amabiko_91:

(23, 64704), (Start: 27 @64713 has 56 MA's), (40, 64737), (66, 64956), (88, 65082), (92, 65103), (105, 65202), (121, 65283), (129, 65328), (146, 65469), (147, 65475),

Gene: Anedea_87 Start: 64016, Stop: 64789, Start Num: 32

Candidate Starts for Anedea_87:

(Start: 32 @64016 has 4 MA's), (66, 64259), (75, 64316), (102, 64487), (105, 64505), (121, 64586), (129, 64631), (141, 64727), (147, 64778),

Gene: Angela_85 Start: 63491, Stop: 64261, Start Num: 28

Candidate Starts for Angela_85:

(Start: 28 @63491 has 8 MA's), (42, 63518), (66, 63731), (75, 63788), (105, 63977), (106, 63983), (121, 64058), (129, 64103), (141, 64199), (146, 64244), (147, 64250),

Gene: AngryGiraffe_90 Start: 64666, Stop: 65439, Start Num: 27

Candidate Starts for AngryGiraffe_90:

(23, 64657), (Start: 27 @64666 has 56 MA's), (66, 64909), (88, 65035), (105, 65155), (118, 65224), (121, 65236), (129, 65281), (146, 65422), (147, 65428),

Gene: Annadreamy_69 Start: 54670, Stop: 55452, Start Num: 27

Candidate Starts for Annadreamy_69:

(Start: 27 @54670 has 56 MA's), (50, 54763), (66, 54916), (71, 54955), (82, 55003), (84, 55018), (99, 55120), (105, 55162), (110, 55192), (121, 55243), (129, 55288), (144, 55414), (146, 55432),

Gene: ArianaSWT_91 Start: 65222, Stop: 65995, Start Num: 31

Candidate Starts for ArianaSWT_91:

(Start: 31 @65222 has 31 MA's), (66, 65465), (75, 65522), (85, 65579), (104, 65705), (105, 65711), (106, 65717), (121, 65792), (129, 65837), (141, 65933), (147, 65984),

Gene: BackyardAgain_210 Start: 116743, Stop: 117513, Start Num: 8

Candidate Starts for BackyardAgain_210:

(Start: 8 @116743 has 45 MA's), (53, 116923), (65, 117007), (67, 117019), (69, 117040), (70, 117043), (73, 117061), (85, 117136), (91, 117169), (95, 117184), (112, 117298), (116, 117325), (120, 117340), (130, 117391), (134, 117418), (138, 117436), (139, 117454), (143, 117499),

Gene: Bartholomune_86 Start: 63915, Stop: 64688, Start Num: 31

Candidate Starts for Bartholomune_86:

(Start: 31 @63915 has 31 MA's), (66, 64158), (75, 64215), (85, 64272), (102, 64386), (105, 64404), (106, 64410), (121, 64485), (129, 64530), (141, 64626), (146, 64671), (147, 64677),

Gene: Basquiat_211 Start: 117297, Stop: 118067, Start Num: 8

Candidate Starts for Basquiat_211:

(Start: 8 @117297 has 45 MA's), (53, 117477), (65, 117561), (67, 117573), (69, 117594), (70, 117597), (73, 117615), (85, 117690), (91, 117723), (112, 117852), (116, 117879), (120, 117894), (130, 117945), (134, 117972), (138, 117990), (139, 118008), (143, 118053),

Gene: Battuta_89 Start: 64687, Stop: 65460, Start Num: 27

Candidate Starts for Battuta_89:

(23, 64678), (Start: 27 @64687 has 56 MA's), (66, 64930), (88, 65056), (92, 65077), (105, 65176), (121, 65257), (129, 65302), (146, 65443), (147, 65449),

Gene: BeanWater_206 Start: 117823, Stop: 118593, Start Num: 8

Candidate Starts for BeanWater_206:

(Start: 8 @117823 has 45 MA's), (53, 118003), (65, 118087), (67, 118099), (69, 118120), (70, 118123), (73, 118141), (85, 118216), (91, 118249), (112, 118378), (116, 118405), (120, 118420), (130, 118471), (134, 118498), (138, 118516), (139, 118534), (143, 118579),

Gene: Belfort_73 Start: 56826, Stop: 57608, Start Num: 27

Candidate Starts for Belfort_73:

(Start: 27 @56826 has 56 MA's), (46, 56892), (55, 57015), (57, 57033), (66, 57072), (71, 57111), (82, 57159), (99, 57276), (105, 57318), (108, 57339), (111, 57351), (121, 57399), (129, 57444), (137, 57495), (146, 57588),

Gene: Belieber_207 Start: 116611, Stop: 117381, Start Num: 8

Candidate Starts for Belieber_207:

(Start: 8 @116611 has 45 MA's), (53, 116791), (65, 116875), (67, 116887), (69, 116908), (70, 116911), (73, 116929), (85, 117004), (91, 117037), (112, 117166), (116, 117193), (120, 117208), (130, 117259), (134, 117286), (138, 117304), (139, 117322), (143, 117367),

Gene: Beuffert_69 Start: 55794, Stop: 56576, Start Num: 27

Candidate Starts for Beuffert_69:

(19, 55764), (20, 55767), (Start: 27 @55794 has 56 MA's), (46, 55860), (50, 55887), (60, 56013), (63, 56025), (66, 56040), (71, 56079), (82, 56127), (89, 56169), (99, 56244), (105, 56286), (110, 56316), (121, 56367), (129, 56412), (144, 56538), (146, 56556),

Gene: Bezza_203 Start: 118335, Stop: 119105, Start Num: 8

Candidate Starts for Bezza_203:

(Start: 8 @118335 has 45 MA's), (53, 118515), (65, 118599), (67, 118611), (69, 118632), (70, 118635), (73, 118653), (85, 118728), (91, 118761), (112, 118890), (116, 118917), (120, 118932), (130, 118983), (134, 119010), (138, 119028), (139, 119046), (143, 119091),

Gene: BigCity_223 Start: 121394, Stop: 122164, Start Num: 8

Candidate Starts for BigCity_223:

(Start: 8 @121394 has 45 MA's), (53, 121574), (65, 121658), (67, 121670), (69, 121691), (70, 121694), (73, 121712), (85, 121787), (91, 121820), (112, 121949), (116, 121976), (120, 121991), (130, 122042), (134, 122069), (138, 122087), (139, 122105), (143, 122150),

Gene: Bigswole_219 Start: 121248, Stop: 122018, Start Num: 8

Candidate Starts for Bigswole_219:

(Start: 8 @121248 has 45 MA's), (53, 121428), (65, 121512), (67, 121524), (69, 121545), (70, 121548), (73, 121566), (85, 121641), (91, 121674), (112, 121803), (116, 121830), (120, 121845), (130, 121896), (134, 121923), (138, 121941), (139, 121959), (143, 122004),

Gene: BillNye_66 Start: 58105, Stop: 58887, Start Num: 28

Candidate Starts for BillNye_66:

(Start: 28 @58105 has 8 MA's), (48, 58180), (50, 58198), (59, 58318), (66, 58351), (82, 58438), (105, 58597), (110, 58627), (121, 58678), (129, 58723), (135, 58765), (146, 58867),

Gene: Birchlyn_88 Start: 62570, Stop: 63343, Start Num: 27

Candidate Starts for Birchlyn_88:

(23, 62561), (Start: 27 @62570 has 56 MA's), (40, 62594), (66, 62813), (88, 62939), (92, 62960), (105, 63059), (121, 63140), (129, 63185), (146, 63326), (147, 63332),

Gene: Blackbrain_211 Start: 118382, Stop: 119152, Start Num: 8

Candidate Starts for Blackbrain_211:

(Start: 8 @118382 has 45 MA's), (53, 118562), (65, 118646), (67, 118658), (69, 118679), (70, 118682), (73, 118700), (85, 118775), (91, 118808), (112, 118937), (116, 118964), (120, 118979), (130, 119030), (134, 119057), (138, 119075), (139, 119093), (143, 119138),

Gene: BlueOtter_88 Start: 65259, Stop: 66032, Start Num: 31

Candidate Starts for BlueOtter_88:

(Start: 31 @65259 has 31 MA's), (66, 65502), (75, 65559), (85, 65616), (104, 65742), (105, 65748), (106, 65754), (121, 65829), (129, 65874), (141, 65970), (147, 66021),

Gene: Blueeyedbeauty_71 Start: 55187, Stop: 55969, Start Num: 27

Candidate Starts for Blueeyedbeauty_71:

(19, 55157), (20, 55160), (Start: 27 @55187 has 56 MA's), (46, 55253), (50, 55280), (60, 55406), (63, 55418), (66, 55433), (71, 55472), (82, 55520), (84, 55535), (89, 55562), (99, 55637), (105, 55679), (110, 55709), (121, 55760), (129, 55805), (144, 55931), (146, 55949),

Gene: Bmoc_86 Start: 63854, Stop: 64627, Start Num: 32

Candidate Starts for Bmoc_86:

(Start: 32 @63854 has 4 MA's), (66, 64097), (75, 64154), (102, 64325), (103, 64331), (105, 64343), (106, 64349), (121, 64424), (129, 64469), (141, 64565), (147, 64616),

Gene: BoomerJR_91 Start: 64555, Stop: 65328, Start Num: 27

Candidate Starts for BoomerJR_91:

(23, 64546), (Start: 27 @64555 has 56 MA's), (66, 64798), (88, 64924), (105, 65044), (118, 65113), (121, 65125), (129, 65170), (146, 65311), (147, 65317),

Gene: Bordeaux_89 Start: 64842, Stop: 65615, Start Num: 27

Candidate Starts for Bordeaux_89:

(23, 64833), (Start: 27 @64842 has 56 MA's), (66, 65085), (88, 65211), (92, 65232), (105, 65331), (121, 65412), (129, 65457), (146, 65598), (147, 65604),

Gene: Braelyn_88 Start: 64679, Stop: 65452, Start Num: 31

Candidate Starts for Braelyn_88:

(Start: 31 @64679 has 31 MA's), (66, 64922), (75, 64979), (85, 65036), (102, 65150), (105, 65168), (106, 65174), (121, 65249), (129, 65294), (141, 65390), (146, 65435), (147, 65441),

Gene: Brizzy_90 Start: 64361, Stop: 65134, Start Num: 27

Candidate Starts for Brizzy_90:

(23, 64352), (Start: 27 @64361 has 56 MA's), (66, 64604), (88, 64730), (92, 64751), (105, 64850), (121, 64931), (129, 64976), (146, 65117), (147, 65123),

Gene: Bxz1_204 Start: 120857, Stop: 121627, Start Num: 8

Candidate Starts for Bxz1_204:

(Start: 8 @120857 has 45 MA's), (53, 121037), (65, 121121), (67, 121133), (69, 121154), (70, 121157), (73, 121175), (85, 121250), (91, 121283), (112, 121412), (116, 121439), (120, 121454), (130, 121505), (134, 121532), (138, 121550), (139, 121568), (143, 121613),

Gene: Cactojaque_209 Start: 117317, Stop: 118087, Start Num: 8

Candidate Starts for Cactojaque_209:

(Start: 8 @117317 has 45 MA's), (53, 117497), (65, 117581), (67, 117593), (69, 117614), (70, 117617), (73, 117635), (85, 117710), (91, 117743), (112, 117872), (116, 117899), (120, 117914), (130, 117965), (134, 117992), (138, 118010), (139, 118028), (143, 118073),

Gene: Cadmus_87 Start: 64208, Stop: 64981, Start Num: 29

Candidate Starts for Cadmus_87:

(Start: 29 @64208 has 2 MA's), (47, 64274), (66, 64451), (75, 64508), (102, 64679), (105, 64697), (106, 64703), (119, 64772), (121, 64778), (129, 64823), (130, 64832), (141, 64919), (146, 64964), (147, 64970),

Gene: Cali_207 Start: 119264, Stop: 120034, Start Num: 8

Candidate Starts for Cali_207:

(Start: 8 @119264 has 45 MA's), (Start: 44 @119372 has 1 MA's), (53, 119444), (65, 119528), (67, 119540), (69, 119561), (70, 119564), (73, 119582), (85, 119657), (91, 119690), (112, 119819), (116, 119846), (120, 119861), (130, 119912), (134, 119939), (138, 119957), (139, 119975), (143, 120020),

Gene: CeilingFan_90 Start: 64602, Stop: 65375, Start Num: 27

Candidate Starts for CeilingFan_90:

(23, 64593), (Start: 27 @64602 has 56 MA's), (66, 64845), (88, 64971), (92, 64992), (105, 65091), (121, 65172), (129, 65217), (146, 65358), (147, 65364),

Gene: Chaewon_70 Start: 58044, Stop: 58826, Start Num: 28

Candidate Starts for Chaewon_70:

(Start: 28 @58044 has 8 MA's), (48, 58119), (50, 58137), (59, 58257), (66, 58290), (71, 58329), (82, 58377), (105, 58536), (121, 58617), (129, 58662), (146, 58806),

Gene: Chargie21_211 Start: 117297, Stop: 118067, Start Num: 8

Candidate Starts for Chargie21_211:

(Start: 8 @117297 has 45 MA's), (53, 117477), (65, 117561), (67, 117573), (69, 117594), (70, 117597), (73, 117615), (85, 117690), (91, 117723), (112, 117852), (116, 117879), (120, 117894), (130, 117945),

(134, 117972), (138, 117990), (139, 118008), (143, 118053),

Gene: ChaylaJr_212 Start: 117997, Stop: 118767, Start Num: 8

Candidate Starts for ChaylaJr_212:

(Start: 8 @117997 has 45 MA's), (53, 118177), (65, 118261), (67, 118273), (69, 118294), (70, 118297), (73, 118315), (85, 118390), (91, 118423), (95, 118438), (112, 118552), (116, 118579), (120, 118594), (130, 118645), (134, 118672), (138, 118690), (139, 118708), (143, 118753),

Gene: CherryTomatoes_157 Start: 110871, Stop: 111644, Start Num: 9

Candidate Starts for CherryTomatoes_157:

(Start: 9 @110871 has 3 MA's), (41, 110943), (65, 111147), (67, 111159), (70, 111183), (86, 111279), (92, 111309), (103, 111393), (109, 111426), (112, 111435), (116, 111462), (120, 111477), (126, 111501), (130, 111528), (139, 111591), (143, 111636),

Gene: ChickenPhender_210 Start: 117444, Stop: 118214, Start Num: 8

Candidate Starts for ChickenPhender_210:

(Start: 8 @117444 has 45 MA's), (53, 117624), (65, 117708), (67, 117720), (69, 117741), (70, 117744), (73, 117762), (85, 117837), (91, 117870), (112, 117999), (116, 118026), (120, 118041), (130, 118092), (134, 118119), (138, 118137), (139, 118155), (143, 118200),

Gene: Circinus_67 Start: 58092, Stop: 58874, Start Num: 28

Candidate Starts for Circinus_67:

(14, 58047), (Start: 28 @58092 has 8 MA's), (48, 58167), (50, 58185), (59, 58305), (66, 58338), (82, 58425), (105, 58584), (110, 58614), (121, 58665), (129, 58710), (135, 58752), (146, 58854),

Gene: Comrade_71 Start: 56442, Stop: 57224, Start Num: 27

Candidate Starts for Comrade_71:

(Start: 27 @56442 has 56 MA's), (46, 56508), (55, 56631), (57, 56649), (66, 56688), (71, 56727), (82, 56775), (99, 56892), (105, 56934), (108, 56955), (111, 56967), (121, 57015), (129, 57060), (137, 57111), (146, 57204),

Gene: Concombre_219 Start: 120937, Stop: 121707, Start Num: 8

Candidate Starts for Concombre_219:

(Start: 8 @120937 has 45 MA's), (53, 121117), (65, 121201), (67, 121213), (69, 121234), (70, 121237), (73, 121255), (85, 121330), (91, 121363), (112, 121492), (116, 121519), (120, 121534), (130, 121585), (134, 121612), (138, 121630), (139, 121648), (143, 121693),

Gene: Coogler_88 Start: 65285, Stop: 66058, Start Num: 31

Candidate Starts for Coogler_88:

(Start: 31 @65285 has 31 MA's), (66, 65528), (75, 65585), (85, 65642), (104, 65768), (105, 65774), (106, 65780), (121, 65855), (129, 65900), (141, 65996), (147, 66047),

Gene: Cross_88 Start: 65260, Stop: 66033, Start Num: 31

Candidate Starts for Cross_88:

(Start: 31 @65260 has 31 MA's), (66, 65503), (75, 65560), (85, 65617), (104, 65743), (105, 65749), (106, 65755), (121, 65830), (129, 65875), (141, 65971), (147, 66022),

Gene: Cursive_86 Start: 64785, Stop: 65558, Start Num: 31

Candidate Starts for Cursive_86:

(Start: 31 @64785 has 31 MA's), (66, 65028), (75, 65085), (85, 65142), (104, 65268), (105, 65274), (106, 65280), (121, 65355), (129, 65400), (141, 65496), (147, 65547),

Gene: Daisy123_94 Start: 64461, Stop: 65234, Start Num: 27

Candidate Starts for Daisy123_94:

(23, 64452), (Start: 27 @64461 has 56 MA's), (40, 64485), (66, 64704), (88, 64830), (92, 64851), (105, 64950), (121, 65031), (129, 65076), (146, 65217), (147, 65223),

Gene: Dandelion_222 Start: 122421, Stop: 123191, Start Num: 8

Candidate Starts for Dandelion_222:

(Start: 8 @122421 has 45 MA's), (53, 122601), (65, 122685), (67, 122697), (69, 122718), (70, 122721), (73, 122739), (85, 122814), (91, 122847), (112, 122976), (116, 123003), (120, 123018), (130, 123069), (134, 123096), (138, 123114), (139, 123132), (143, 123177),

Gene: Daubenski_90 Start: 64972, Stop: 65745, Start Num: 29

Candidate Starts for Daubenski_90:

(Start: 29 @64972 has 2 MA's), (47, 65038), (66, 65215), (75, 65272), (102, 65443), (105, 65461), (106, 65467), (119, 65536), (121, 65542), (129, 65587), (130, 65596), (141, 65683), (146, 65728), (147, 65734),

Gene: Davielle_86 Start: 64099, Stop: 64872, Start Num: 31

Candidate Starts for Davielle_86:

(Start: 31 @64099 has 31 MA's), (66, 64342), (75, 64399), (85, 64456), (102, 64570), (105, 64588), (106, 64594), (121, 64669), (129, 64714), (141, 64810), (146, 64855), (147, 64861),

Gene: DeejaClivia_202 Start: 117157, Stop: 117927, Start Num: 8

Candidate Starts for DeejaClivia_202:

(Start: 8 @117157 has 45 MA's), (53, 117337), (65, 117421), (67, 117433), (69, 117454), (70, 117457), (73, 117475), (85, 117550), (91, 117583), (95, 117598), (112, 117712), (116, 117739), (120, 117754), (130, 117805), (134, 117832), (138, 117850), (139, 117868), (143, 117913),

Gene: DeluluLabubu_71 Start: 54465, Stop: 55247, Start Num: 27

Candidate Starts for DeluluLabubu_71:

(Start: 27 @54465 has 56 MA's), (50, 54558), (57, 54672), (63, 54696), (66, 54711), (71, 54750), (82, 54798), (84, 54813), (99, 54915), (105, 54957), (108, 54978), (111, 54990), (121, 55038), (129, 55083), (137, 55134), (146, 55227),

Gene: Demodog_220 Start: 120947, Stop: 121717, Start Num: 8

Candidate Starts for Demodog_220:

(Start: 8 @120947 has 45 MA's), (53, 121127), (65, 121211), (67, 121223), (69, 121244), (70, 121247), (73, 121265), (85, 121340), (91, 121373), (112, 121502), (116, 121529), (120, 121544), (130, 121595), (134, 121622), (138, 121640), (139, 121658), (143, 121703),

Gene: Dorin_83 Start: 66468, Stop: 67226, Start Num: 36

Candidate Starts for Dorin_83:

(Start: 36 @66468 has 2 MA's), (43, 66486), (66, 66690), (69, 66717), (101, 66921), (104, 66936), (105, 66942), (121, 67023), (122, 67035),

Gene: E3_gp157 Start: 108661, Stop: 109473, Start Num: 5

Candidate Starts for E3_gp157:

(5, 108661), (11, 108715), (12, 108718), (21, 108739), (22, 108742), (45, 108829), (48, 108841), (53, 108895), (65, 108979), (67, 108991), (68, 109003), (73, 109033), (74, 109036), (96, 109162), (113, 109270), (120, 109309), (123, 109324), (125, 109330), (139, 109423),

Gene: EGole_89 Start: 66205, Stop: 66978, Start Num: 31

Candidate Starts for EGole_89:

(Start: 31 @66205 has 31 MA's), (66, 66448), (75, 66505), (85, 66562), (104, 66688), (105, 66694), (106, 66700), (121, 66775), (129, 66820), (141, 66916), (147, 66967),

Gene: EasyJones_217 Start: 118540, Stop: 119310, Start Num: 8

Candidate Starts for EasyJones_217:

(Start: 8 @118540 has 45 MA's), (53, 118720), (65, 118804), (67, 118816), (69, 118837), (70, 118840), (73, 118858), (85, 118933), (91, 118966), (112, 119095), (116, 119122), (120, 119137), (130, 119188), (134, 119215), (138, 119233), (139, 119251), (143, 119296),

Gene: EggyFarm_223 Start: 121395, Stop: 122165, Start Num: 8

Candidate Starts for EggyFarm_223:

(Start: 8 @121395 has 45 MA's), (53, 121575), (65, 121659), (67, 121671), (69, 121692), (70, 121695), (73, 121713), (85, 121788), (91, 121821), (112, 121950), (116, 121977), (120, 121992), (130, 122043), (134, 122070), (138, 122088), (139, 122106), (143, 122151),

Gene: Eliot67_85 Start: 63957, Stop: 64730, Start Num: 31

Candidate Starts for Eliot67_85:

(Start: 31 @63957 has 31 MA's), (66, 64200), (75, 64257), (85, 64314), (102, 64428), (105, 64446), (106, 64452), (121, 64527), (129, 64572), (141, 64668), (146, 64713), (147, 64719),

Gene: Elmer_93 Start: 65793, Stop: 66566, Start Num: 27

Candidate Starts for Elmer_93:

(25, 65787), (Start: 27 @65793 has 56 MA's), (59, 66003), (66, 66036), (88, 66162), (105, 66282), (119, 66357), (121, 66363), (129, 66408), (146, 66549), (147, 66555),

Gene: Emma1919_73 Start: 55139, Stop: 55921, Start Num: 27

Candidate Starts for Emma1919_73:

(Start: 27 @55139 has 56 MA's), (50, 55232), (57, 55346), (63, 55370), (66, 55385), (71, 55424), (82, 55472), (84, 55487), (99, 55589), (105, 55631), (108, 55652), (111, 55664), (121, 55712), (129, 55757), (137, 55808), (146, 55901),

Gene: Enygma_91 Start: 66498, Stop: 67271, Start Num: 27

Candidate Starts for Enygma_91:

(23, 66489), (Start: 27 @66498 has 56 MA's), (66, 66741), (75, 66798), (88, 66867), (105, 66987), (106, 66993), (118, 67056), (121, 67068), (129, 67113), (147, 67260),

Gene: ErnieJ_207 Start: 116719, Stop: 117489, Start Num: 8

Candidate Starts for ErnieJ_207:

(Start: 8 @116719 has 45 MA's), (53, 116899), (65, 116983), (67, 116995), (69, 117016), (70, 117019), (73, 117037), (85, 117112), (91, 117145), (112, 117274), (116, 117301), (120, 117316), (130, 117367), (134, 117394), (138, 117412), (139, 117430), (143, 117475),

Gene: Evy_88 Start: 65159, Stop: 65932, Start Num: 30

Candidate Starts for Evy_88:

(Start: 30 @65159 has 6 MA's), (37, 65174), (48, 65231), (66, 65402), (75, 65459), (105, 65648), (121, 65729), (129, 65774), (141, 65870), (146, 65915), (147, 65921),

Gene: Faust_73 Start: 56777, Stop: 57562, Start Num: 27

Candidate Starts for Faust_73:

(Start: 27 @56777 has 56 MA's), (46, 56846), (50, 56873), (66, 57026), (82, 57113), (99, 57230), (101, 57251), (105, 57272), (121, 57353), (128, 57389), (129, 57398), (137, 57449), (144, 57524), (146, 57542),

Gene: Finch_81 Start: 70492, Stop: 71337, Start Num: 17

Candidate Starts for Finch_81:

(1, 70099), (2, 70222), (4, 70342), (Start: 17 @70492 has 1 MA's), (Start: 34 @70537 has 1 MA's), (46, 70597), (50, 70624), (53, 70696), (54, 70711), (68, 70804), (71, 70825), (73, 70834), (78, 70888), (87, 70972), (93, 71002), (96, 71020), (97, 71032), (107, 71104), (113, 71128), (114, 71134), (132, 71230),

Gene: Flabslab_209 Start: 116861, Stop: 117631, Start Num: 8

Candidate Starts for Flabslab_209:

(Start: 8 @116861 has 45 MA's), (53, 117041), (65, 117125), (67, 117137), (69, 117158), (70, 117161), (73, 117179), (75, 117188), (85, 117254), (91, 117287), (95, 117302), (112, 117416), (116, 117443), (120, 117458), (130, 117509), (134, 117536), (138, 117554), (139, 117572), (143, 117617),

Gene: Fludd_214 Start: 118252, Stop: 119022, Start Num: 8

Candidate Starts for Fludd_214:

(Start: 8 @118252 has 45 MA's), (53, 118432), (65, 118516), (67, 118528), (69, 118549), (70, 118552), (73, 118570), (85, 118645), (91, 118678), (112, 118807), (116, 118834), (120, 118849), (130, 118900), (134, 118927), (138, 118945), (139, 118963), (143, 119008),

Gene: Forrest_74 Start: 56432, Stop: 57214, Start Num: 27

Candidate Starts for Forrest_74:

(Start: 27 @56432 has 56 MA's), (50, 56525), (57, 56639), (63, 56663), (66, 56678), (71, 56717), (82, 56765), (84, 56780), (99, 56882), (105, 56924), (108, 56945), (111, 56957), (121, 57005), (129, 57050), (137, 57101), (146, 57194),

Gene: Francesca_83 Start: 67206, Stop: 67964, Start Num: 36

Candidate Starts for Francesca_83:

(Start: 36 @67206 has 2 MA's), (43, 67224), (66, 67428), (69, 67455), (101, 67659), (104, 67674), (105, 67680), (121, 67761), (122, 67773),

Gene: Francob_70 Start: 55210, Stop: 55992, Start Num: 27

Candidate Starts for Francob_70:

(Start: 27 @55210 has 56 MA's), (57, 55417), (61, 55432), (66, 55456), (71, 55495), (82, 55543), (84, 55558), (99, 55660), (105, 55702), (108, 55723), (110, 55732), (121, 55783), (129, 55828), (137, 55879), (146, 55972),

Gene: FrayBell_217 Start: 118342, Stop: 119112, Start Num: 8

Candidate Starts for FrayBell_217:

(Start: 8 @118342 has 45 MA's), (53, 118522), (65, 118606), (67, 118618), (69, 118639), (70, 118642), (73, 118660), (85, 118735), (91, 118768), (112, 118897), (116, 118924), (120, 118939), (130, 118990), (134, 119017), (138, 119035), (139, 119053), (143, 119098),

Gene: FreddyDRoo_85 Start: 63957, Stop: 64730, Start Num: 31

Candidate Starts for FreddyDRoo_85:

(Start: 31 @63957 has 31 MA's), (66, 64200), (75, 64257), (85, 64314), (102, 64428), (105, 64446), (106, 64452), (121, 64527), (129, 64572), (141, 64668), (146, 64713), (147, 64719),

Gene: Genie2_91 Start: 64669, Stop: 65442, Start Num: 27

Candidate Starts for Genie2_91:

(23, 64660), (Start: 27 @64669 has 56 MA's), (66, 64912), (88, 65038), (105, 65158), (118, 65227), (121, 65239), (129, 65284), (146, 65425), (147, 65431),

Gene: Gibbi_95 Start: 64825, Stop: 65598, Start Num: 27

Candidate Starts for Gibbi_95:

(23, 64816), (Start: 27 @64825 has 56 MA's), (66, 65068), (88, 65194), (92, 65215), (105, 65314), (121, 65395), (129, 65440), (146, 65581), (147, 65587),

Gene: Gilson_72 Start: 55101, Stop: 55883, Start Num: 27

Candidate Starts for Gilson_72:

(Start: 27 @55101 has 56 MA's), (50, 55194), (57, 55308), (63, 55332), (66, 55347), (71, 55386), (82, 55434), (84, 55449), (99, 55551), (105, 55593), (108, 55614), (111, 55626), (121, 55674), (129, 55719), (137, 55770), (146, 55863),

Gene: Grasshills_222 Start: 121394, Stop: 122164, Start Num: 8

Candidate Starts for Grasshills_222:

(Start: 8 @121394 has 45 MA's), (53, 121574), (65, 121658), (67, 121670), (69, 121691), (70, 121694), (73, 121712), (85, 121787), (91, 121820), (112, 121949), (116, 121976), (120, 121991), (130, 122042), (134, 122069), (138, 122087), (139, 122105), (143, 122150),

Gene: Grayson_109 Start: 68149, Stop: 68922, Start Num: 30

Candidate Starts for Grayson_109:

(Start: 30 @68149 has 6 MA's), (Start: 34 @68155 has 1 MA's), (38, 68167), (39, 68173), (51, 68293), (55, 68332), (98, 68578), (105, 68629), (121, 68710), (129, 68755),

Gene: Greely_203 Start: 115700, Stop: 116476, Start Num: 8

Candidate Starts for Greely_203:

(Start: 8 @115700 has 45 MA's), (41, 115787), (53, 115889), (65, 115973), (69, 116006), (73, 116027), (86, 116105), (87, 116108), (91, 116132), (95, 116147), (103, 116219), (112, 116261), (130, 116354), (139, 116417), (143, 116462),

Gene: HangryHippo_88 Start: 65259, Stop: 66032, Start Num: 31

Candidate Starts for HangryHippo_88:

(Start: 31 @65259 has 31 MA's), (66, 65502), (75, 65559), (85, 65616), (104, 65742), (105, 65748), (106, 65754), (121, 65829), (129, 65874), (141, 65970), (147, 66021),

Gene: HyRo_202 Start: 118039, Stop: 118809, Start Num: 8

Candidate Starts for HyRo_202:

(Start: 8 @118039 has 45 MA's), (53, 118219), (65, 118303), (67, 118315), (69, 118336), (70, 118339), (73, 118357), (85, 118432), (91, 118465), (95, 118480), (112, 118594), (116, 118621), (120, 118636), (130, 118687), (134, 118714), (138, 118732), (139, 118750), (143, 118795),

Gene: I3_224 Start: 120484, Stop: 121254, Start Num: 8

Candidate Starts for I3_224:

(Start: 8 @120484 has 45 MA's), (53, 120664), (65, 120748), (67, 120760), (69, 120781), (70, 120784), (73, 120802), (85, 120877), (91, 120910), (112, 121039), (116, 121066), (120, 121081), (130, 121132), (134, 121159), (138, 121177), (139, 121195), (143, 121240),

Gene: IchabodCrane_88 Start: 64414, Stop: 65187, Start Num: 27

Candidate Starts for IchabodCrane_88:

(23, 64405), (Start: 27 @64414 has 56 MA's), (40, 64438), (66, 64657), (88, 64783), (92, 64804), (105, 64903), (121, 64984), (129, 65029), (146, 65170), (147, 65176),

Gene: InterFolia_217 Start: 120147, Stop: 120917, Start Num: 8

Candidate Starts for InterFolia_217:

(Start: 8 @120147 has 45 MA's), (53, 120327), (65, 120411), (67, 120423), (69, 120444), (70, 120447), (73, 120465), (85, 120540), (91, 120573), (112, 120702), (116, 120729), (120, 120744), (130, 120795), (134, 120822), (138, 120840), (139, 120858), (143, 120903),

Gene: Jada_72 Start: 55614, Stop: 56396, Start Num: 27

Candidate Starts for Jada_72:

(Start: 27 @55614 has 56 MA's), (50, 55707), (57, 55821), (63, 55845), (66, 55860), (71, 55899), (82, 55947), (84, 55962), (99, 56064), (105, 56106), (108, 56127), (111, 56139), (121, 56187), (129, 56232), (137, 56283), (146, 56376),

Gene: Jay2Jay_92 Start: 66011, Stop: 66784, Start Num: 30

Candidate Starts for Jay2Jay_92:

(Start: 30 @66011 has 6 MA's), (37, 66026), (46, 66074), (48, 66083), (66, 66254), (75, 66311), (105, 66500), (121, 66581), (129, 66626), (141, 66722), (146, 66767), (147, 66773),

Gene: JayJay_216 Start: 119371, Stop: 120141, Start Num: 8

Candidate Starts for JayJay_216:

(Start: 8 @119371 has 45 MA's), (53, 119551), (65, 119635), (67, 119647), (69, 119668), (70, 119671), (73, 119689), (85, 119764), (91, 119797), (95, 119812), (112, 119926), (116, 119953), (120, 119968), (130, 120019), (134, 120046), (138, 120064), (139, 120082), (143, 120127),

Gene: JeanGrey_98 Start: 79852, Stop: 80628, Start Num: 13

Candidate Starts for JeanGrey_98:

(6, 79819), (7, 79831), (Start: 13 @79852 has 1 MA's), (23, 79879), (41, 79921), (62, 80131), (65, 80143), (67, 80155), (72, 80191), (87, 80278), (95, 80317), (103, 80389), (108, 80416), (116, 80458), (124, 80491), (133, 80542),

Gene: JigglyPuff_221 Start: 120945, Stop: 121715, Start Num: 8

Candidate Starts for JigglyPuff_221:

(Start: 8 @120945 has 45 MA's), (53, 121125), (65, 121209), (67, 121221), (69, 121242), (70, 121245), (73, 121263), (85, 121338), (91, 121371), (112, 121500), (116, 121527), (120, 121542), (130, 121593), (134, 121620), (138, 121638), (139, 121656), (143, 121701),

Gene: JimJam_91 Start: 64788, Stop: 65561, Start Num: 27

Candidate Starts for JimJam_91:

(23, 64779), (Start: 27 @64788 has 56 MA's), (66, 65031), (88, 65157), (92, 65178), (105, 65277), (121, 65358), (129, 65403), (146, 65544), (147, 65550),

Gene: Jollison_90 Start: 64670, Stop: 65443, Start Num: 27

Candidate Starts for Jollison_90:

(23, 64661), (Start: 27 @64670 has 56 MA's), (66, 64913), (88, 65039), (92, 65060), (105, 65159), (121, 65240), (129, 65285), (146, 65426), (147, 65432),

Gene: Karimac_90 Start: 64819, Stop: 65592, Start Num: 27

Candidate Starts for Karimac_90:

(23, 64810), (Start: 27 @64819 has 56 MA's), (66, 65062), (88, 65188), (92, 65209), (105, 65308), (121, 65389), (129, 65434), (146, 65575), (147, 65581),

Gene: Karp_69 Start: 56035, Stop: 56817, Start Num: 27

Candidate Starts for Karp_69:

(Start: 27 @56035 has 56 MA's), (46, 56101), (50, 56128), (55, 56224), (57, 56242), (66, 56281), (71, 56320), (82, 56368), (99, 56485), (105, 56527), (108, 56548), (111, 56560), (121, 56608), (129, 56653), (137, 56704), (146, 56797),

Gene: Kenrey_73 Start: 55283, Stop: 56065, Start Num: 27

Candidate Starts for Kenrey_73:

(Start: 27 @55283 has 56 MA's), (50, 55376), (57, 55490), (66, 55529), (71, 55568), (82, 55616), (99, 55733), (105, 55775), (108, 55796), (111, 55808), (121, 55856), (129, 55901), (137, 55952), (144, 56027), (146, 56045),

Gene: KentuckyRacer_91 Start: 64603, Stop: 65376, Start Num: 27

Candidate Starts for KentuckyRacer_91:

(23, 64594), (Start: 27 @64603 has 56 MA's), (66, 64846), (88, 64972), (92, 64993), (105, 65092), (121, 65173), (129, 65218), (146, 65359), (147, 65365),

Gene: LRRHood_207 Start: 118237, Stop: 119007, Start Num: 8

Candidate Starts for LRRHood_207:

(Start: 8 @118237 has 45 MA's), (53, 118417), (65, 118501), (67, 118513), (69, 118534), (70, 118537), (73, 118555), (85, 118630), (91, 118663), (112, 118792), (116, 118819), (120, 118834), (130, 118885), (134, 118912), (138, 118930), (139, 118948), (143, 118993),

Gene: Larnav_88 Start: 65244, Stop: 66017, Start Num: 31

Candidate Starts for Larnav_88:

(Start: 31 @65244 has 31 MA's), (66, 65487), (75, 65544), (85, 65601), (104, 65727), (105, 65733), (106, 65739), (121, 65814), (129, 65859), (141, 65955), (147, 66006),

Gene: Leo04_89 Start: 65759, Stop: 66532, Start Num: 31

Candidate Starts for Leo04_89:

(Start: 31 @65759 has 31 MA's), (66, 66002), (75, 66059), (85, 66116), (104, 66242), (105, 66248), (106, 66254), (121, 66329), (129, 66374), (141, 66470), (147, 66521),

Gene: Liandry_86 Start: 64664, Stop: 65437, Start Num: 31

Candidate Starts for Liandry_86:

(Start: 31 @64664 has 31 MA's), (66, 64907), (75, 64964), (85, 65021), (102, 65135), (105, 65153), (106, 65159), (121, 65234), (129, 65279), (141, 65375), (146, 65420), (147, 65426),

Gene: LilMartin_85 Start: 63439, Stop: 64209, Start Num: 28

Candidate Starts for LilMartin_85:

(Start: 28 @63439 has 8 MA's), (42, 63466), (66, 63679), (75, 63736), (105, 63925), (106, 63931), (121, 64006), (129, 64051), (141, 64147), (146, 64192), (147, 64198),

Gene: LilSaint_86 Start: 63689, Stop: 64462, Start Num: 32

Candidate Starts for LilSaint_86:

(Start: 32 @63689 has 4 MA's), (66, 63932), (75, 63989), (102, 64160), (105, 64178), (121, 64259), (129, 64304), (141, 64400), (147, 64451),

Gene: Limpid_68 Start: 54669, Stop: 55451, Start Num: 27

Candidate Starts for Limpid_68:

(Start: 27 @54669 has 56 MA's), (50, 54762), (66, 54915), (71, 54954), (82, 55002), (84, 55017), (99, 55119), (105, 55161), (110, 55191), (121, 55242), (129, 55287), (144, 55413), (146, 55431),

Gene: LinStu_213 Start: 118524, Stop: 119294, Start Num: 8

Candidate Starts for LinStu_213:

(Start: 8 @118524 has 45 MA's), (53, 118704), (65, 118788), (67, 118800), (69, 118821), (70, 118824), (73, 118842), (85, 118917), (91, 118950), (112, 119079), (116, 119106), (120, 119121), (130, 119172), (134, 119199), (138, 119217), (139, 119235), (143, 119280),

Gene: LolaVinca_212 Start: 119577, Stop: 120347, Start Num: 8

Candidate Starts for LolaVinca_212:

(Start: 8 @119577 has 45 MA's), (53, 119757), (65, 119841), (67, 119853), (69, 119874), (70, 119877), (73, 119895), (85, 119970), (91, 120003), (112, 120132), (116, 120159), (120, 120174), (130, 120225), (134, 120252), (138, 120270), (139, 120288), (143, 120333),

Gene: LordLeafolot_215 Start: 119190, Stop: 119960, Start Num: 8

Candidate Starts for LordLeafolot_215:

(Start: 8 @119190 has 45 MA's), (53, 119370), (65, 119454), (67, 119466), (69, 119487), (70, 119490), (73, 119508), (85, 119583), (91, 119616), (112, 119745), (116, 119772), (120, 119787), (130, 119838), (134, 119865), (138, 119883), (139, 119901), (143, 119946),

Gene: LukeCage_90 Start: 64576, Stop: 65349, Start Num: 27

Candidate Starts for LukeCage_90:

(23, 64567), (Start: 27 @64576 has 56 MA's), (40, 64600), (66, 64819), (88, 64945), (105, 65065), (118, 65134), (121, 65146), (129, 65191), (146, 65332), (147, 65338),

Gene: Lululemon_87 Start: 64640, Stop: 65413, Start Num: 31

Candidate Starts for Lululemon_87:

(Start: 31 @64640 has 31 MA's), (66, 64883), (75, 64940), (85, 64997), (104, 65123), (105, 65129), (106, 65135), (121, 65210), (129, 65255), (141, 65351), (147, 65402),

Gene: Lunareta_212 Start: 119883, Stop: 120653, Start Num: 8

Candidate Starts for Lunareta_212:

(Start: 8 @119883 has 45 MA's), (53, 120063), (65, 120147), (67, 120159), (69, 120180), (70, 120183), (73, 120201), (85, 120276), (91, 120309), (95, 120324), (112, 120438), (116, 120465), (120, 120480), (130, 120531), (134, 120558), (138, 120576), (139, 120594), (143, 120639),

Gene: Marsus_86 Start: 63688, Stop: 64458, Start Num: 28

Candidate Starts for Marsus_86:

(Start: 28 @63688 has 8 MA's), (42, 63715), (66, 63928), (75, 63985), (105, 64174), (121, 64255), (129, 64300), (141, 64396), (146, 64441), (147, 64447),

Gene: Maturis_211 Start: 118739, Stop: 119509, Start Num: 8

Candidate Starts for Maturis_211:

(Start: 8 @118739 has 45 MA's), (53, 118919), (65, 119003), (67, 119015), (69, 119036), (70, 119039), (73, 119057), (85, 119132), (91, 119165), (95, 119180), (112, 119294), (116, 119321), (120, 119336), (130, 119387), (134, 119414), (138, 119432), (139, 119450), (143, 119495),

Gene: Maupel_71 Start: 55101, Stop: 55883, Start Num: 27

Candidate Starts for Maupel_71:

(Start: 27 @55101 has 56 MA's), (50, 55194), (57, 55308), (63, 55332), (66, 55347), (71, 55386), (82, 55434), (84, 55449), (99, 55551), (105, 55593), (108, 55614), (111, 55626), (121, 55674), (129, 55719), (137, 55770), (146, 55863),

Gene: MeganTheeKilla_70 Start: 54462, Stop: 55244, Start Num: 27

Candidate Starts for MeganTheeKilla_70:

(Start: 27 @54462 has 56 MA's), (50, 54555), (57, 54669), (63, 54693), (66, 54708), (71, 54747), (82, 54795), (99, 54912), (105, 54954), (108, 54975), (111, 54987), (121, 55035), (129, 55080), (137, 55131), (146, 55224),

Gene: Mildred21_86 Start: 63659, Stop: 64432, Start Num: 31

Candidate Starts for Mildred21_86:

(Start: 31 @63659 has 31 MA's), (66, 63902), (75, 63959), (103, 64136), (105, 64148), (106, 64154), (121, 64229), (129, 64274), (141, 64370), (146, 64415), (147, 64421),

Gene: MindFlayer_88 Start: 64321, Stop: 65094, Start Num: 27

Candidate Starts for MindFlayer_88:

(23, 64312), (Start: 27 @64321 has 56 MA's), (40, 64345), (66, 64564), (88, 64690), (92, 64711), (105, 64810), (121, 64891), (129, 64936), (146, 65077), (147, 65083),

Gene: Moab_71 Start: 56333, Stop: 57115, Start Num: 27

Candidate Starts for Moab_71:

(Start: 27 @56333 has 56 MA's), (50, 56426), (55, 56522), (57, 56540), (66, 56579), (71, 56618), (82, 56666), (99, 56783), (105, 56825), (108, 56846), (110, 56855), (121, 56906), (129, 56951), (146, 57095),

Gene: Moby_210 Start: 117684, Stop: 118454, Start Num: 8

Candidate Starts for Moby_210:

(Start: 8 @117684 has 45 MA's), (53, 117864), (65, 117948), (67, 117960), (69, 117981), (70, 117984), (73, 118002), (85, 118077), (91, 118110), (95, 118125), (112, 118239), (116, 118266), (120, 118281), (130, 118332), (134, 118359), (138, 118377), (139, 118395), (143, 118440),

Gene: Moiqah_209 Start: 117661, Stop: 118431, Start Num: 8

Candidate Starts for Moiqah_209:

(Start: 8 @117661 has 45 MA's), (53, 117841), (65, 117925), (67, 117937), (69, 117958), (70, 117961), (73, 117979), (85, 118054), (91, 118087), (95, 118102), (112, 118216), (116, 118243), (120, 118258), (130, 118309), (134, 118336), (138, 118354), (139, 118372), (143, 118417),

Gene: Montpel_212 Start: 119881, Stop: 120651, Start Num: 8

Candidate Starts for Montpel_212:

(Start: 8 @119881 has 45 MA's), (53, 120061), (65, 120145), (67, 120157), (69, 120178), (70, 120181), (73, 120199), (85, 120274), (91, 120307), (95, 120322), (112, 120436), (116, 120463), (120, 120478), (130, 120529), (134, 120556), (138, 120574), (139, 120592), (143, 120637),

Gene: Mugiwara_90 Start: 65075, Stop: 65848, Start Num: 27

Candidate Starts for Mugiwara_90:

(23, 65066), (Start: 27 @65075 has 56 MA's), (66, 65318), (75, 65375), (88, 65444), (105, 65564), (121, 65645), (129, 65690), (146, 65831), (147, 65837),

Gene: MulchMansion_85 Start: 63439, Stop: 64209, Start Num: 28

Candidate Starts for MulchMansion_85:

(Start: 28 @63439 has 8 MA's), (42, 63466), (66, 63679), (75, 63736), (105, 63925), (106, 63931), (121, 64006), (129, 64051), (141, 64147), (146, 64192), (147, 64198),

Gene: Muntaha_68 Start: 56441, Stop: 57223, Start Num: 28

Candidate Starts for Muntaha_68:

(Start: 28 @56441 has 8 MA's), (50, 56534), (59, 56654), (66, 56687), (71, 56726), (82, 56774), (84, 56789), (105, 56933), (121, 57014), (129, 57059), (135, 57101), (146, 57203),

Gene: Myrna_196 Start: 115086, Stop: 115862, Start Num: 8

Candidate Starts for Myrna_196:

(Start: 8 @115086 has 45 MA's), (41, 115173), (53, 115275), (65, 115359), (69, 115392), (73, 115413), (79, 115440), (84, 115473), (86, 115491), (87, 115494), (94, 115527), (95, 115533), (103, 115605), (109, 115638), (130, 115740), (139, 115803), (143, 115848),

Gene: Nappy_215 Start: 120182, Stop: 120952, Start Num: 8

Candidate Starts for Nappy_215:

(Start: 8 @120182 has 45 MA's), (53, 120362), (65, 120446), (67, 120458), (69, 120479), (70, 120482), (73, 120500), (85, 120575), (91, 120608), (112, 120737), (116, 120764), (120, 120779), (130, 120830), (134, 120857), (138, 120875), (139, 120893), (143, 120938),

Gene: Navo_85 Start: 64583, Stop: 65356, Start Num: 31

Candidate Starts for Navo_85:

(Start: 31 @64583 has 31 MA's), (66, 64826), (75, 64883), (85, 64940), (102, 65054), (105, 65072), (106, 65078), (121, 65153), (129, 65198), (141, 65294), (146, 65339), (147, 65345),

Gene: NiceHouse_96 Start: 71004, Stop: 71774, Start Num: 33

Candidate Starts for NiceHouse_96:

(Start: 33 @71004 has 1 MA's), (49, 71070), (51, 71139), (66, 71235), (70, 71265), (75, 71292), (105, 71481), (111, 71514), (117, 71547), (121, 71562), (129, 71607), (140, 71691), (145, 71748),

Gene: NootNoot_83 Start: 63578, Stop: 64351, Start Num: 31

Candidate Starts for NootNoot_83:

(Start: 31 @63578 has 31 MA's), (66, 63821), (75, 63878), (85, 63935), (102, 64049), (105, 64067), (106, 64073), (121, 64148), (129, 64193), (141, 64289), (146, 64334), (147, 64340),

Gene: Nova53_79 Start: 66078, Stop: 66794, Start Num: 44

Candidate Starts for Nova53_79:

(Start: 36 @66042 has 2 MA's), (Start: 44 @66078 has 1 MA's), (51, 66168), (66, 66264), (86, 66387), (93, 66414), (105, 66510), (115, 66564), (121, 66591), (122, 66603), (142, 66735), (146, 66777),

Gene: NuevoMundo_217 Start: 120775, Stop: 121545, Start Num: 8

Candidate Starts for NuevoMundo_217:

(Start: 8 @120775 has 45 MA's), (53, 120955), (65, 121039), (67, 121051), (69, 121072), (70, 121075), (73, 121093), (85, 121168), (91, 121201), (95, 121216), (112, 121330), (116, 121357), (120, 121372), (130, 121423), (134, 121450), (138, 121468), (139, 121486), (143, 121531),

Gene: PacManQ_87 Start: 64640, Stop: 65413, Start Num: 31

Candidate Starts for PacManQ_87:

(Start: 31 @64640 has 31 MA's), (66, 64883), (75, 64940), (85, 64997), (104, 65123), (105, 65129), (106, 65135), (121, 65210), (129, 65255), (141, 65351), (147, 65402),

Gene: Paradiddles_83 Start: 63842, Stop: 64615, Start Num: 31

Candidate Starts for Paradiddles_83:

(Start: 31 @63842 has 31 MA's), (66, 64085), (75, 64142), (85, 64199), (102, 64313), (105, 64331), (106, 64337), (121, 64412), (129, 64457), (141, 64553), (146, 64598), (147, 64604),

Gene: Patelgo_71 Start: 56496, Stop: 57278, Start Num: 27

Candidate Starts for Patelgo_71:

(Start: 27 @56496 has 56 MA's), (50, 56589), (55, 56685), (57, 56703), (66, 56742), (71, 56781), (82, 56829), (99, 56946), (105, 56988), (108, 57009), (110, 57018), (121, 57069), (129, 57114), (146, 57258),

Gene: Peebs_87 Start: 64994, Stop: 65767, Start Num: 31

Candidate Starts for Peebs_87:

(Start: 31 @64994 has 31 MA's), (66, 65237), (75, 65294), (85, 65351), (104, 65477), (105, 65483), (106, 65489), (121, 65564), (129, 65609), (141, 65705), (147, 65756),

Gene: Pepperwood_88 Start: 65127, Stop: 65900, Start Num: 31

Candidate Starts for Pepperwood_88:

(Start: 31 @65127 has 31 MA's), (66, 65370), (75, 65427), (85, 65484), (104, 65610), (105, 65616), (106, 65622), (121, 65697), (129, 65742), (141, 65838), (147, 65889),

Gene: Peregrin_106 Start: 66574, Stop: 67347, Start Num: 30

Candidate Starts for Peregrin_106:

(Start: 30 @66574 has 6 MA's), (Start: 34 @66580 has 1 MA's), (38, 66592), (39, 66598), (51, 66718), (55, 66757), (56, 66760), (98, 67003), (105, 67054), (121, 67135), (129, 67180),

Gene: Persimmon_86 Start: 63511, Stop: 64284, Start Num: 31

Candidate Starts for Persimmon_86:

(Start: 31 @63511 has 31 MA's), (66, 63754), (75, 63811), (85, 63868), (102, 63982), (105, 64000), (106, 64006), (121, 64081), (129, 64126), (141, 64222), (146, 64267), (147, 64273),

Gene: Phabba_207 Start: 115054, Stop: 115830, Start Num: 8

Candidate Starts for Phabba_207:

(Start: 8 @115054 has 45 MA's), (41, 115141), (53, 115243), (65, 115327), (69, 115360), (73, 115381), (86, 115459), (87, 115462), (88, 115465), (95, 115501), (103, 115573), (112, 115615), (130, 115708), (139, 115771), (143, 115816),

Gene: PharkleMinkus_216 Start: 118341, Stop: 119111, Start Num: 8

Candidate Starts for PharkleMinkus_216:

(Start: 8 @118341 has 45 MA's), (53, 118521), (65, 118605), (67, 118617), (69, 118638), (70, 118641), (73, 118659), (85, 118734), (91, 118767), (112, 118896), (116, 118923), (120, 118938), (130, 118989), (134, 119016), (138, 119034), (139, 119052), (143, 119097),

Gene: Phox_215 Start: 119443, Stop: 120213, Start Num: 8

Candidate Starts for Phox_215:

(Start: 8 @119443 has 45 MA's), (53, 119623), (65, 119707), (67, 119719), (69, 119740), (70, 119743), (73, 119761), (85, 119836), (91, 119869), (112, 119998), (116, 120025), (120, 120040), (130, 120091), (134, 120118), (138, 120136), (139, 120154), (143, 120199),

Gene: Phrappuccino_125 Start: 91892, Stop: 92680, Start Num: 15

Candidate Starts for Phrappuccino_125:

(3, 91706), (Start: 15 @91892 has 2 MA's), (Start: 30 @91934 has 6 MA's), (41, 91961), (46, 92000), (62, 92150), (65, 92162), (66, 92168), (67, 92174), (73, 92216), (84, 92279), (87, 92300), (88, 92303), (100, 92387), (112, 92474), (113, 92477), (116, 92501), (130, 92567), (139, 92630),

Gene: Phredrick_71 Start: 54363, Stop: 55145, Start Num: 27

Candidate Starts for Phredrick_71:

(Start: 27 @54363 has 56 MA's), (50, 54456), (57, 54570), (66, 54609), (71, 54648), (82, 54696), (99, 54813), (105, 54855), (108, 54876), (111, 54888), (121, 54936), (129, 54981), (137, 55032), (144, 55107), (146, 55125),

Gene: Pier_215 Start: 120320, Stop: 121090, Start Num: 8

Candidate Starts for Pier_215:

(Start: 8 @120320 has 45 MA's), (53, 120500), (65, 120584), (67, 120596), (69, 120617), (70, 120620), (73, 120638), (85, 120713), (91, 120746), (95, 120761), (112, 120875), (116, 120902), (120, 120917), (130, 120968), (134, 120995), (138, 121013), (139, 121031), (143, 121076),

Gene: Pinkcreek_198 Start: 117696, Stop: 118466, Start Num: 8

Candidate Starts for Pinkcreek_198:

(Start: 8 @117696 has 45 MA's), (53, 117876), (65, 117960), (67, 117972), (69, 117993), (70, 117996), (73, 118014), (85, 118089), (91, 118122), (95, 118137), (112, 118251), (116, 118278), (120, 118293),

(130, 118344), (134, 118371), (138, 118389), (139, 118407), (143, 118452),

Gene: PinkiePie_86 Start: 64664, Stop: 65437, Start Num: 31

Candidate Starts for PinkiePie_86:

(Start: 31 @64664 has 31 MA's), (66, 64907), (75, 64964), (85, 65021), (102, 65135), (105, 65153), (106, 65159), (121, 65234), (129, 65279), (141, 65375), (146, 65420), (147, 65426),

Gene: Pio_222 Start: 121512, Stop: 122282, Start Num: 8

Candidate Starts for Pio_222:

(Start: 8 @121512 has 45 MA's), (53, 121692), (65, 121776), (67, 121788), (69, 121809), (70, 121812), (73, 121830), (85, 121905), (91, 121938), (112, 122067), (116, 122094), (120, 122109), (130, 122160), (134, 122187), (138, 122205), (139, 122223), (143, 122268),

Gene: PumpkinSpice_90 Start: 64713, Stop: 65486, Start Num: 27

Candidate Starts for PumpkinSpice_90:

(23, 64704), (Start: 27 @64713 has 56 MA's), (66, 64956), (88, 65082), (92, 65103), (105, 65202), (121, 65283), (129, 65328), (146, 65469), (147, 65475),

Gene: Pupper_156 Start: 111111, Stop: 111884, Start Num: 9

Candidate Starts for Pupper_156:

(Start: 9 @111111 has 3 MA's), (41, 111183), (65, 111387), (67, 111399), (70, 111423), (86, 111519), (92, 111549), (103, 111633), (109, 111666), (112, 111675), (116, 111702), (120, 111717), (126, 111741), (130, 111768), (139, 111831), (143, 111876),

Gene: PynkPanther_92 Start: 64644, Stop: 65417, Start Num: 31

Candidate Starts for PynkPanther_92:

(Start: 31 @64644 has 31 MA's), (66, 64887), (75, 64944), (85, 65001), (102, 65115), (105, 65133), (106, 65139), (121, 65214), (129, 65259), (141, 65355), (146, 65400), (147, 65406),

Gene: QBert_206 Start: 117844, Stop: 118614, Start Num: 8

Candidate Starts for QBert_206:

(Start: 8 @117844 has 45 MA's), (53, 118024), (65, 118108), (67, 118120), (69, 118141), (70, 118144), (73, 118162), (85, 118237), (91, 118270), (112, 118399), (116, 118426), (120, 118441), (130, 118492), (134, 118519), (138, 118537), (139, 118555), (143, 118600),

Gene: Quaran19_90 Start: 64704, Stop: 65477, Start Num: 27

Candidate Starts for Quaran19_90:

(23, 64695), (Start: 27 @64704 has 56 MA's), (66, 64947), (88, 65073), (92, 65094), (105, 65193), (121, 65274), (129, 65319), (146, 65460), (147, 65466),

Gene: Quasimodo_216 Start: 119114, Stop: 119884, Start Num: 8

Candidate Starts for Quasimodo_216:

(Start: 8 @119114 has 45 MA's), (53, 119294), (65, 119378), (67, 119390), (69, 119411), (70, 119414), (73, 119432), (85, 119507), (91, 119540), (112, 119669), (116, 119696), (120, 119711), (130, 119762), (134, 119789), (138, 119807), (139, 119825), (143, 119870),

Gene: Rabinovish_207 Start: 119389, Stop: 120159, Start Num: 8

Candidate Starts for Rabinovish_207:

(Start: 8 @119389 has 45 MA's), (53, 119569), (65, 119653), (67, 119665), (69, 119686), (70, 119689), (73, 119707), (75, 119716), (85, 119782), (91, 119815), (95, 119830), (112, 119944), (116, 119971), (120, 119986), (130, 120037), (134, 120064), (138, 120082), (139, 120100), (143, 120145),

Gene: RedWattleHog_83 Start: 76357, Stop: 77220, Start Num: 16

Candidate Starts for RedWattleHog_83:

(Start: 8 @76342 has 45 MA's), (Start: 16 @76357 has 2 MA's), (18, 76363), (Start: 34 @76405 has 1 MA's), (53, 76564), (57, 76615), (58, 76618), (62, 76636), (65, 76648), (68, 76672), (69, 76681), (73, 76702), (77, 76717), (80, 76789), (83, 76834), (85, 76849), (109, 76999), (112, 77008), (113, 77011), (127, 77080), (130, 77101),

Gene: Rikishi_91 Start: 64619, Stop: 65392, Start Num: 27

Candidate Starts for Rikishi_91:

(23, 64610), (Start: 27 @64619 has 56 MA's), (66, 64862), (88, 64988), (92, 65009), (105, 65108), (121, 65189), (129, 65234), (146, 65375), (147, 65381),

Gene: Riptide_84 Start: 63233, Stop: 64006, Start Num: 32

Candidate Starts for Riptide_84:

(Start: 32 @63233 has 4 MA's), (66, 63476), (75, 63533), (102, 63704), (105, 63722), (121, 63803), (129, 63848), (141, 63944), (147, 63995),

Gene: SCentae_155 Start: 111265, Stop: 112038, Start Num: 9

Candidate Starts for SCentae_155:

(Start: 9 @111265 has 3 MA's), (41, 111337), (65, 111541), (67, 111553), (70, 111577), (86, 111673), (92, 111703), (103, 111787), (109, 111820), (112, 111829), (116, 111856), (120, 111871), (126, 111895), (130, 111922), (139, 111985), (143, 112030),

Gene: SaltySpittoon_90 Start: 64713, Stop: 65486, Start Num: 27

Candidate Starts for SaltySpittoon_90:

(23, 64704), (Start: 27 @64713 has 56 MA's), (66, 64956), (88, 65082), (92, 65103), (105, 65202), (121, 65283), (129, 65328), (146, 65469), (147, 65475),

Gene: Samisti12_88 Start: 66436, Stop: 67209, Start Num: 31

Candidate Starts for Samisti12_88:

(Start: 31 @66436 has 31 MA's), (66, 66679), (75, 66736), (85, 66793), (104, 66919), (105, 66925), (106, 66931), (121, 67006), (129, 67051), (141, 67147), (147, 67198),

Gene: Scheme_89 Start: 65841, Stop: 66614, Start Num: 31

Candidate Starts for Scheme_89:

(Start: 31 @65841 has 31 MA's), (66, 66084), (75, 66141), (85, 66198), (104, 66324), (105, 66330), (106, 66336), (121, 66411), (129, 66456), (141, 66552), (147, 66603),

Gene: Sebata_215 Start: 119949, Stop: 120719, Start Num: 8

Candidate Starts for Sebata_215:

(Start: 8 @119949 has 45 MA's), (53, 120129), (65, 120213), (67, 120225), (69, 120246), (70, 120249), (73, 120267), (85, 120342), (91, 120375), (95, 120390), (112, 120504), (116, 120531), (120, 120546), (130, 120597), (134, 120624), (138, 120642), (139, 120660), (143, 120705),

Gene: SeresaTree_73 Start: 56167, Stop: 56952, Start Num: 27

Candidate Starts for SeresaTree_73:

(Start: 27 @56167 has 56 MA's), (46, 56236), (50, 56263), (66, 56416), (82, 56503), (99, 56620), (101, 56641), (105, 56662), (121, 56743), (128, 56779), (129, 56788), (137, 56839), (144, 56914), (146, 56932),

Gene: Settecandela_125 Start: 91892, Stop: 92680, Start Num: 15

Candidate Starts for Settecandela_125:

(3, 91706), (Start: 15 @91892 has 2 MA's), (Start: 30 @91934 has 6 MA's), (41, 91961), (46, 92000), (62, 92150), (65, 92162), (66, 92168), (67, 92174), (73, 92216), (84, 92279), (87, 92300), (88, 92303),

(100, 92387), (112, 92474), (113, 92477), (116, 92501), (130, 92567), (139, 92630),

Gene: Sham_69 Start: 56839, Stop: 57630, Start Num: 26

Candidate Starts for Sham_69:

(Start: 26 @56839 has 2 MA's), (Start: 28 @56845 has 8 MA's), (50, 56941), (63, 57079), (66, 57094), (71, 57133), (99, 57298), (105, 57340), (110, 57370), (121, 57421), (129, 57466), (144, 57592), (145, 57607), (146, 57610),

Gene: Shifa_191 Start: 118008, Stop: 118778, Start Num: 8

Candidate Starts for Shifa_191:

(Start: 8 @118008 has 45 MA's), (53, 118188), (65, 118272), (67, 118284), (69, 118305), (70, 118308), (73, 118326), (85, 118401), (91, 118434), (95, 118449), (112, 118563), (116, 118590), (120, 118605), (130, 118656), (134, 118683), (138, 118701), (139, 118719), (143, 118764),

Gene: Shuckle_86 Start: 65449, Stop: 66222, Start Num: 31

Candidate Starts for Shuckle_86:

(Start: 31 @65449 has 31 MA's), (66, 65692), (75, 65749), (85, 65806), (105, 65938), (106, 65944), (121, 66019), (129, 66064), (141, 66160), (146, 66205), (147, 66211),

Gene: Skog_216 Start: 140744, Stop: 141520, Start Num: 10

Candidate Starts for Skog_216:

(Start: 10 @140744 has 1 MA's), (24, 140780), (41, 140819), (52, 140918), (65, 141023), (67, 141035), (69, 141056), (70, 141059), (76, 141089), (81, 141119), (84, 141137), (86, 141155), (90, 141167), (92, 141185), (103, 141269), (112, 141311), (113, 141314), (116, 141338), (120, 141353), (130, 141404), (139, 141467),

Gene: Sollertia_91 Start: 64669, Stop: 65442, Start Num: 27

Candidate Starts for Sollertia_91:

(23, 64660), (Start: 27 @64669 has 56 MA's), (66, 64912), (88, 65038), (105, 65158), (118, 65227), (121, 65239), (129, 65284), (146, 65425), (147, 65431),

Gene: SparkleGoddess_71 Start: 56443, Stop: 57225, Start Num: 27

Candidate Starts for SparkleGoddess_71:

(Start: 27 @56443 has 56 MA's), (46, 56509), (55, 56632), (57, 56650), (66, 56689), (71, 56728), (82, 56776), (99, 56893), (105, 56935), (108, 56956), (111, 56968), (121, 57016), (129, 57061), (137, 57112), (146, 57205),

Gene: Specks_218 Start: 119898, Stop: 120668, Start Num: 8

Candidate Starts for Specks_218:

(Start: 8 @119898 has 45 MA's), (53, 120078), (65, 120162), (67, 120174), (69, 120195), (70, 120198), (73, 120216), (85, 120291), (91, 120324), (112, 120453), (116, 120480), (120, 120495), (130, 120546), (134, 120573), (138, 120591), (139, 120609), (143, 120654),

Gene: Spelly_91 Start: 64668, Stop: 65441, Start Num: 27

Candidate Starts for Spelly_91:

(23, 64659), (Start: 27 @64668 has 56 MA's), (66, 64911), (88, 65037), (92, 65058), (105, 65157), (121, 65238), (129, 65283), (146, 65424), (147, 65430),

Gene: Spilled_92 Start: 64785, Stop: 65558, Start Num: 27

Candidate Starts for Spilled_92:

(23, 64776), (Start: 27 @64785 has 56 MA's), (66, 65028), (88, 65154), (92, 65175), (105, 65274), (121, 65355), (129, 65400), (146, 65541), (147, 65547),

Gene: Squillium_87 Start: 64665, Stop: 65438, Start Num: 31

Candidate Starts for Squillium_87:

(Start: 31 @64665 has 31 MA's), (66, 64908), (75, 64965), (85, 65022), (102, 65136), (105, 65154), (106, 65160), (121, 65235), (129, 65280), (141, 65376), (146, 65421), (147, 65427),

Gene: Stanimal_91 Start: 64558, Stop: 65331, Start Num: 27

Candidate Starts for Stanimal_91:

(23, 64549), (Start: 27 @64558 has 56 MA's), (66, 64801), (88, 64927), (105, 65047), (118, 65116), (121, 65128), (129, 65173), (146, 65314), (147, 65320),

Gene: StarPlatinum_91 Start: 65221, Stop: 65994, Start Num: 27

Candidate Starts for StarPlatinum_91:

(23, 65212), (Start: 27 @65221 has 56 MA's), (66, 65464), (88, 65590), (105, 65710), (121, 65791), (129, 65836), (146, 65977), (147, 65983),

Gene: Starbow_89 Start: 64689, Stop: 65462, Start Num: 27

Candidate Starts for Starbow_89:

(23, 64680), (Start: 27 @64689 has 56 MA's), (66, 64932), (88, 65058), (92, 65079), (105, 65178), (121, 65259), (129, 65304), (146, 65445), (147, 65451),

Gene: Stigma_70 Start: 56451, Stop: 57233, Start Num: 27

Candidate Starts for Stigma_70:

(Start: 27 @56451 has 56 MA's), (46, 56517), (55, 56640), (57, 56658), (66, 56697), (71, 56736), (82, 56784), (99, 56901), (105, 56943), (108, 56964), (111, 56976), (121, 57024), (129, 57069), (137, 57120), (146, 57213),

Gene: Stormageddon_80 Start: 76338, Stop: 77201, Start Num: 16

Candidate Starts for Stormageddon_80:

(Start: 8 @76323 has 45 MA's), (Start: 16 @76338 has 2 MA's), (18, 76344), (Start: 34 @76386 has 1 MA's), (53, 76545), (57, 76596), (58, 76599), (62, 76617), (65, 76629), (68, 76653), (69, 76662), (73, 76683), (77, 76698), (80, 76770), (83, 76815), (85, 76830), (109, 76980), (112, 76989), (113, 76992), (127, 77061), (130, 77082),

Gene: Stubby_198 Start: 117899, Stop: 118669, Start Num: 8

Candidate Starts for Stubby_198:

(Start: 8 @117899 has 45 MA's), (53, 118079), (65, 118163), (67, 118175), (69, 118196), (70, 118199), (73, 118217), (85, 118292), (91, 118325), (95, 118340), (112, 118454), (116, 118481), (120, 118496), (130, 118547), (134, 118574), (138, 118592), (139, 118610), (143, 118655),

Gene: Sushi23_87 Start: 65352, Stop: 66125, Start Num: 31

Candidate Starts for Sushi23_87:

(Start: 31 @65352 has 31 MA's), (66, 65595), (75, 65652), (85, 65709), (104, 65835), (105, 65841), (106, 65847), (121, 65922), (129, 65967), (141, 66063), (147, 66114),

Gene: Tainan_215 Start: 118917, Stop: 119687, Start Num: 8

Candidate Starts for Tainan_215:

(Start: 8 @118917 has 45 MA's), (53, 119097), (65, 119181), (67, 119193), (69, 119214), (70, 119217), (73, 119235), (85, 119310), (91, 119343), (112, 119472), (116, 119499), (120, 119514), (130, 119565), (134, 119592), (138, 119610), (139, 119628), (143, 119673),

Gene: Targaryen_88 Start: 66061, Stop: 66834, Start Num: 30

Candidate Starts for Targaryen_88:

(Start: 30 @66061 has 6 MA's), (37, 66076), (48, 66133), (66, 66304), (75, 66361), (105, 66550), (121, 66631), (129, 66676), (141, 66772), (146, 66817), (147, 66823),

Gene: Teutsch_88 Start: 65615, Stop: 66388, Start Num: 31

Candidate Starts for Teutsch_88:

(Start: 31 @65615 has 31 MA's), (42, 65645), (66, 65858), (75, 65915), (85, 65972), (104, 66098), (105, 66104), (106, 66110), (121, 66185), (129, 66230), (141, 66326), (147, 66377),

Gene: TomSawyer_89 Start: 64304, Stop: 65077, Start Num: 27

Candidate Starts for TomSawyer_89:

(23, 64295), (Start: 27 @64304 has 56 MA's), (66, 64547), (88, 64673), (92, 64694), (105, 64793), (121, 64874), (129, 64919), (146, 65060), (147, 65066),

Gene: Tomas_93 Start: 67469, Stop: 68242, Start Num: 27

Candidate Starts for Tomas_93:

(Start: 27 @67469 has 56 MA's), (40, 67493), (42, 67499), (47, 67535), (66, 67712), (88, 67838), (105, 67958), (117, 68024), (121, 68039), (129, 68084), (131, 68102), (147, 68231),

Gene: Tonenili_236 Start: 124698, Stop: 125468, Start Num: 8

Candidate Starts for Tonenili_236:

(Start: 8 @124698 has 45 MA's), (Start: 44 @124806 has 1 MA's), (53, 124878), (65, 124962), (67, 124974), (69, 124995), (70, 124998), (73, 125016), (85, 125091), (91, 125124), (108, 125238), (110, 125247), (112, 125253), (116, 125280), (120, 125295), (130, 125346), (134, 125373), (138, 125391), (139, 125409), (143, 125454),

Gene: Tribute_86 Start: 64821, Stop: 65594, Start Num: 31

Candidate Starts for Tribute_86:

(Start: 31 @64821 has 31 MA's), (66, 65064), (75, 65121), (85, 65178), (104, 65304), (105, 65310), (106, 65316), (121, 65391), (129, 65436), (141, 65532), (147, 65583),

Gene: Trina_108 Start: 74062, Stop: 74832, Start Num: 35

Candidate Starts for Trina_108:

(Start: 35 @74062 has 1 MA's), (51, 74197), (66, 74293), (72, 74335), (99, 74500), (101, 74521), (105, 74542), (111, 74575), (117, 74608), (118, 74611), (121, 74623), (129, 74668), (145, 74809),

Gene: Trinitium_210 Start: 117619, Stop: 118389, Start Num: 8

Candidate Starts for Trinitium_210:

(Start: 8 @117619 has 45 MA's), (53, 117799), (65, 117883), (67, 117895), (69, 117916), (70, 117919), (73, 117937), (85, 118012), (91, 118045), (112, 118174), (116, 118201), (120, 118216), (130, 118267), (134, 118294), (138, 118312), (139, 118330), (143, 118375),

Gene: TunaTartare_72 Start: 57339, Stop: 58130, Start Num: 26

Candidate Starts for TunaTartare_72:

(Start: 26 @57339 has 2 MA's), (Start: 28 @57345 has 8 MA's), (50, 57441), (63, 57579), (66, 57594), (89, 57723), (99, 57798), (105, 57840), (110, 57870), (121, 57921), (124, 57942), (129, 57966), (144, 58092), (146, 58110),

Gene: Turret_207 Start: 117201, Stop: 117971, Start Num: 8

Candidate Starts for Turret_207:

(Start: 8 @117201 has 45 MA's), (53, 117381), (65, 117465), (67, 117477), (69, 117498), (70, 117501), (73, 117519), (85, 117594), (91, 117627), (112, 117756), (116, 117783), (120, 117798), (130, 117849), (134, 117876), (138, 117894), (139, 117912), (143, 117957),

Gene: Vortrix_234 Start: 123485, Stop: 124255, Start Num: 8

Candidate Starts for Vortrix_234:

(Start: 8 @123485 has 45 MA's), (Start: 44 @123593 has 1 MA's), (53, 123665), (65, 123749), (67, 123761), (69, 123782), (70, 123785), (73, 123803), (85, 123878), (91, 123911), (108, 124025), (110, 124034), (112, 124040), (116, 124067), (120, 124082), (130, 124133), (134, 124160), (138, 124178), (139, 124196), (143, 124241),

Gene: Wakanda_67 Start: 56378, Stop: 57160, Start Num: 28

Candidate Starts for Wakanda_67:

(Start: 28 @56378 has 8 MA's), (50, 56471), (59, 56591), (66, 56624), (71, 56663), (82, 56711), (84, 56726), (105, 56870), (121, 56951), (129, 56996), (135, 57038), (146, 57140),

Gene: Warpy_91 Start: 65524, Stop: 66297, Start Num: 30

Candidate Starts for Warpy_91:

(Start: 30 @65524 has 6 MA's), (37, 65539), (46, 65587), (48, 65596), (66, 65767), (75, 65824), (105, 66013), (121, 66094), (129, 66139), (141, 66235), (146, 66280), (147, 66286),

Gene: WashU_91 Start: 65130, Stop: 65903, Start Num: 31

Candidate Starts for WashU_91:

(Start: 31 @65130 has 31 MA's), (66, 65373), (75, 65430), (85, 65487), (104, 65613), (105, 65619), (106, 65625), (121, 65700), (129, 65745), (141, 65841), (147, 65892),

Gene: Watermoore_88 Start: 65831, Stop: 66604, Start Num: 31

Candidate Starts for Watermoore_88:

(Start: 31 @65831 has 31 MA's), (66, 66074), (75, 66131), (85, 66188), (104, 66314), (105, 66320), (106, 66326), (121, 66401), (129, 66446), (141, 66542), (147, 66593),

Gene: Weasels2_108 Start: 67583, Stop: 68353, Start Num: 34

Candidate Starts for Weasels2_108:

(Start: 34 @67583 has 1 MA's), (39, 67601), (51, 67721), (55, 67760), (56, 67763), (59, 67784), (64, 67808), (72, 67859), (105, 68057), (119, 68132), (129, 68183), (136, 68228),

Gene: Westy_72 Start: 56443, Stop: 57225, Start Num: 27

Candidate Starts for Westy_72:

(Start: 27 @56443 has 56 MA's), (46, 56509), (55, 56632), (57, 56650), (66, 56689), (71, 56728), (82, 56776), (99, 56893), (105, 56935), (108, 56956), (111, 56968), (121, 57016), (129, 57061), (137, 57112), (146, 57205),

Gene: WhereRU_85 Start: 64099, Stop: 64872, Start Num: 31

Candidate Starts for WhereRU_85:

(Start: 31 @64099 has 31 MA's), (66, 64342), (75, 64399), (85, 64456), (102, 64570), (105, 64588), (106, 64594), (121, 64669), (129, 64714), (141, 64810), (146, 64855), (147, 64861),

Gene: Wipeout_88 Start: 65055, Stop: 65828, Start Num: 27

Candidate Starts for Wipeout_88:

(23, 65046), (Start: 27 @65055 has 56 MA's), (66, 65298), (88, 65424), (92, 65445), (105, 65544), (121, 65625), (129, 65670), (146, 65811), (147, 65817),

Gene: Wofford_90 Start: 65756, Stop: 66529, Start Num: 27

Candidate Starts for Wofford_90:

(25, 65750), (Start: 27 @65756 has 56 MA's), (66, 65999), (88, 66125), (105, 66245), (121, 66326), (129, 66371), (146, 66512), (147, 66518),

Gene: Yaboi_91 Start: 64646, Stop: 65419, Start Num: 27

Candidate Starts for Yaboi_91:

(23, 64637), (Start: 27 @64646 has 56 MA's), (66, 64889), (88, 65015), (105, 65135), (118, 65204),
(121, 65216), (129, 65261), (146, 65402), (147, 65408),