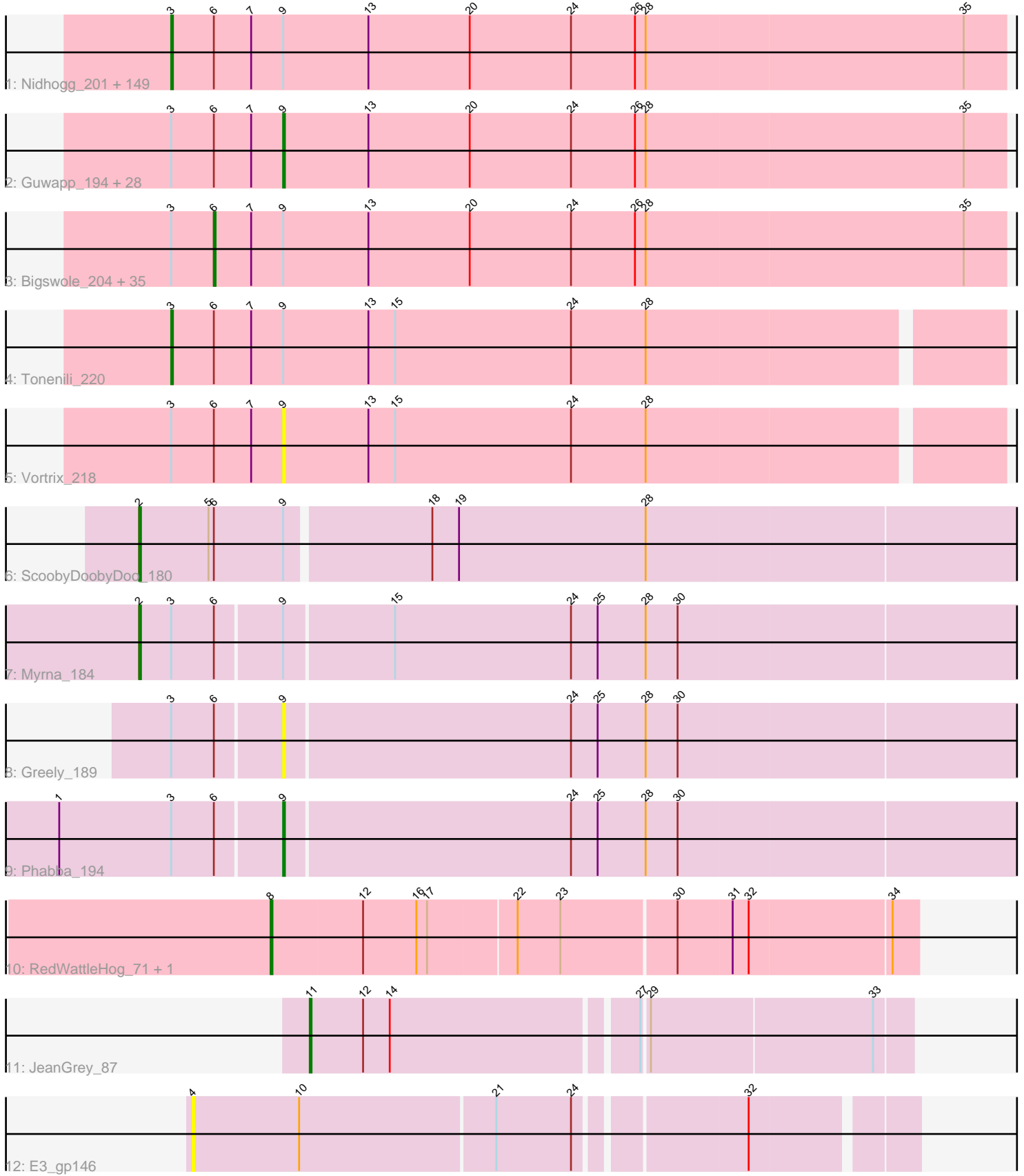


Pham 308050



Note: Tracks are now grouped by subcluster and scaled. Switching in subcluster is indicated by changes in track color. Track scale is now set by default to display the region 30 bp upstream of start 1 to 30 bp downstream of the last possible start. If this default region is judged to be packed too tightly with annotated starts, the track will be further scaled to only show that region of the ORF with annotated starts. This action will be indicated by adding "Zoomed" to the title. For starts, yellow indicates the location of called starts comprised solely of Glimmer/GeneMark auto-annotations, green indicates the location of called starts with at least 1 manual gene annotation.

Pham 308050 Report

This analysis was run 06/27/26 on database version 652.

Pham number 308050 has 225 members, 39 are drafts.

Phages represented in each track:

- Track 1 : Nidhogg_201, McWolfish_197, LifeSavor_198, Derek_196, NuevoMundo_202, InigoMontoya_202, Drazdys_197, Littleton_202, YemiJoy2021_200, JulietS_190, Shelob_201, Spud_194, Chomp_199, Rabinovish_193, Gizmo_205, Bonray_202, JPickles_195, Cali_193, Rahel_200, ChaylaJr_197, SilverDipper_203, Darko_198, Ading_200, Napoleon13_197, ZygoTaiga_196, Erdmann_201, ChickenPhender_196, Babyland_202, Breeniome_198, MoMoMixon_197, MikeLiesIn_201, BadAgartude_193, Basquiat_197, Patter_200, Janiyra_203, Phlegm_203, Audrick_202, BananaFence_196, Naija_200, Sauce_195, Latch_199, Capablanca_204, SmallFry_199, Ngannou_196, Bread_195, SVoro_195, Khaleesi_199, McGee_199, Bipolarisk_198, Jezreel_197, Melpomini_194, Sebata_201, Delilah_198, BeanWater_191, Letha_200, CharlieB_193, Issimir_193, Norm_199, Ava3_198, Quasimodo_202, ErnieJ_192, Megamind_197, Asterius_201, FrayBell_202, Phox_200, Delylah_201, Daffodil_204, Catera_193, EmmaElysia_202, Pinkcreek_184, Kamryn_198, Rizal_192, Sprinklers_197, EmToTheThree_200, EasyJones_203, StubbySaigey_204, Wally_198, Salacia_199, Zalkecks_199, Iota_194, Izajani_198, Yucca_200, Chargie21_197, NoodleTree_206, Bxz1_189, Bangla1971_199, Pleione_204, Stubby_184, DirtMonster_193, Maby2021_199, Trinitium_196, Lukilu_190, LordLeafolot_200, BackyardAgain_196, DrPhinkDaddy_197, Cactojaque_195, Matsumoto_198, Naval22_207, YoungMoneyMata_198, PurduePete_200, FudgeTart_195, LRRHood_192, QBert_191, JustHall_194, Dandelion_207, TinyTim_198, Koguma_198, FoxtrotP1_198, Mangeria_200, Flabslab_195, ShiaLabeouf_196, Gabriel_202, Fludd_200, RoMag_194, ValleyTerrace_200, Jemmno_198, Gamgam_200, Jaygup_195, ET08_187, Amataga_200, Phusco_198, Pier_200, Ablatia_199, Colt_191, Shnickers_197, GlutenPhree_200, Atlantean_199, Willis_200, Cane17_191, Tortoise16_197, IkeLoa_191, Pivoine_200, Ewok_199, DTDevon_201, Shrimp_201, NedWong_199, Roots515_202, Morizzled23_197, Kboogie_203, Jessibeth14_200, Nappy_200, Shaqnato_191, Loanshark_197, Caravan_190, ParkTD_198, Essence_196, Blackbrain_197, Astraea_193, Jedediah_199, SrishMeg2525_197
- Track 2 : Guwapp_194, BigCity_208, Spec_194, Grasshills_207, OrediggerDelux_196, Burrough_201, Dessert_197, Bezza_188, Domi_193, Concombre_204, Zeenon_202, InterFolia_202, Belieber_193, Maturis_197, Substance289_196, EggyFarm_208, Halldule_192, Montpel_198, Mikro_195, DeejaClivia_188, Rocha_197, Lee7_200, StephanieG_196, JigglyPuff_206, Duckfeet_193, ScottMcG_193, Lunareta_198, Ronan_195, Bowman_197

- Track 3 : Bigswole_204, Adlitam_198, Yassified_196, Pupusa_203, LolaVinca_197, Labradorite_197, PharkleMinkus_201, Pio_207, SoilZilla_195, HyRo_187, Dietrick_189, Moby_196, I3_209, LookingGlass_198, Cleatunium_193, ArcherS7_199, Demodog_205, Blackdragon_194, JayJay_202, Turret_193, CindyLou_200, Tyke_197, Teardrop_196, Grungle_184, Fixie_199, Momo_200, LinStu_198, Alice_186, Tainan_200, Blubba_189, Moiqah_195, Fongie_200, Specks_203, Primadonna_194, BobaPhatt_192, Ghost_199
- Track 4 : Tonenili_220
- Track 5 : Vortrix_218
- Track 6 : ScoobyDoobyDoo_180
- Track 7 : Myrna_184
- Track 8 : Greely_189
- Track 9 : Phabba_194
- Track 10 : RedWattleHog_71, Stormageddon_68
- Track 11 : JeanGrey_87
- Track 12 : E3_gp146

Summary of Final Annotations (See graph section above for start numbers):

The start number called the most often in the published annotations is 3, it was called in 151 of the 186 non-draft genes in the pham.

Genes that call this "Most Annotated" start:

- Ablatia_199, Ading_200, Amataga_200, Asterius_201, Astraea_193, Atlantean_199, Audrick_202, Ava3_198, Babyland_202, BackyardAgain_196, BadAgartude_193, BananaFence_196, Bangla1971_199, Basquiat_197, BeanWater_191, Bipolarisk_198, Blackbrain_197, Bonray_202, Bread_195, Breeniome_198, Bxz1_189, Cactojaque_195, Cali_193, Cane17_191, Capablanca_204, Caravan_190, Catera_193, Chargie21_197, CharlieB_193, ChaylaJr_197, ChickenPhender_196, Chomp_199, Colt_191, DTDevon_201, Daffodil_204, Dandelion_207, Darko_198, Delilah_198, Delylah_201, Derek_196, DirtMonster_193, DrPhinkDaddy_197, Drazdys_197, ET08_187, EasyJones_203, EmToTheThree_200, EmmaElysia_202, Erdmann_201, ErnieJ_192, Essence_196, Ewok_199, Flabslab_195, Fludd_200, FoxtrotP1_198, FrayBell_202, FudgeTart_195, Gabriel_202, Gamgam_200, Gizmo_205, GlutenPhree_200, IkeLoa_191, InigoMontoya_202, Iota_194, Issimir_193, Izajani_198, JPickles_195, Janiyra_203, Jaygup_195, Jediah_199, Jemmno_198, Jessibeth14_200, Jezreel_197, JulietS_190, JustHall_194, Kamryn_198, Kboogie_203, Khaleesi_199, Koguma_198, LRRHood_192, Latch_199, Lethe_200, LifeSavor_198, Littleton_202, Loanshark_197, LordLeafolot_200, Lukilu_190, Maby2021_199, Mangeria_200, Matsumoto_198, McGee_199, McWolfish_197, Megamind_197, Melpomini_194, MikeLiesIn_201, MoMoMixon_197, Morizzled23_197, Naija_200, Napoleon13_197, Nappy_200, Naval22_207, NedWong_199, Ngannou_196, Nidhogg_201, NoodleTree_206, Norm_199, NuevoMundo_202, ParkTD_198, Patter_200, Phlegm_203, Phox_200, Phusco_198, Pier_200, Pinkcreek_184, Pivoine_200, Pleione_204, PurduePete_200, QBert_191, Quasimodo_202, Rabinovish_193, Rahel_200, Rizal_192, RoMag_194, Roots515_202, SVoro_195, Salacia_199, Sauce_195, Sebata_201, Shaqnato_191, Shelob_201, ShiaLabeouf_196, Shnickers_197, Shrimp_201, SilverDipper_203, SmallFry_199, Sprinklers_197, Spud_194, SrishMeg2525_197, StubbySaigey_204, Stubby_184, TinyTim_198, Tonenili_220, Tortoise16_197, Trinitium_196,

ValleyTerrace_200, Wally_198, Willis_200, YemiJoy2021_200,
YoungMoneyMata_198, Yucca_200, Zalkecks_199, ZygoTaiga_196,

Genes that have the "Most Annotated" start but do not call it:

- Adlitam_198, Alice_186, ArcherS7_199, Belieber_193, Bezza_188, BigCity_208, Bigswole_204, Blackdragon_194, Blubba_189, BobaPhatt_192, Bowman_197, Burrough_201, CindyLou_200, Cleatunium_193, Concombres_204, DeejaClivia_188, Demodog_205, Dessert_197, Dietrick_189, Domi_193, Duckfeet_193, EggyFarm_208, Fixie_199, Fongie_200, Ghost_199, Grasshills_207, Greely_189, Grungle_184, Guwapp_194, Halldule_192, HyRo_187, I3_209, InterFolia_202, JayJay_202, JigglyPuff_206, Labradorite_197, Lee7_200, LinStu_198, LolaVinca_197, LookingGlass_198, Lunareta_198, Maturis_197, Mikro_195, Moby_196, Moiqah_195, Momo_200, Montpel_198, Myrna_184, OrediggerDelux_196, Phabba_194, PharkleMinkus_201, Pio_207, Primadonna_194, Pupusa_203, Rocha_197, Ronan_195, ScottMcG_193, SoilZilla_195, Spec_194, Specks_203, StephanieG_196, Substance289_196, Tainan_200, Teardrop_196, Turret_193, Tyke_197, Vortrix_218, Yassified_196, Zeenon_202,

Genes that do not have the "Most Annotated" start:

- E3_gp146, JeanGrey_87, RedWattleHog_71, ScoobyDoobyDoo_180, Stormageddon_68,

Summary by start number:

Start 2:

- Found in 2 of 225 (0.9%) of genes in pham
- Manual Annotations of this start: 2 of 186
- Called 100.0% of time when present
- Phage (with cluster) where this start called: Myrna_184 (C2), ScoobyDoobyDoo_180 (C2),

Start 3:

- Found in 220 of 225 (97.8%) of genes in pham
- Manual Annotations of this start: 151 of 186
- Called 68.6% of time when present
- Phage (with cluster) where this start called: Ablatia_199 (C1), Ading_200 (C1), Amataga_200 (C1), Asterius_201 (C1), Astraea_193 (C1), Atlantean_199 (C1), Audrick_202 (C1), Ava3_198 (C1), Babyland_202 (C1), BackyardAgain_196 (C1), BadAgartude_193 (C1), BananaFence_196 (C1), Bangla1971_199 (C1), Basquiat_197 (C1), BeanWater_191 (C1), Bipolarisk_198 (C1), Blackbrain_197 (C1), Bonray_202 (C1), Bread_195 (C1), Breeniome_198 (C1), Bxz1_189 (C1), Cactojaque_195 (C1), Cali_193 (C1), Cane17_191 (C1), Capablanca_204 (C1), Caravan_190 (C1), Catera_193 (C1), Chargie21_197 (C1), CharlieB_193 (C1), ChaylaJr_197 (C1), ChickenPhender_196 (C1), Chomp_199 (C1), Colt_191 (C1), DTDevon_201 (C1), Daffodil_204 (C1), Dandelion_207 (C1), Darko_198 (C1), Delilah_198 (C1), Delylah_201 (C1), Derek_196 (C1), DirtMonster_193 (C1), DrPhinkDaddy_197 (C1), Drazdys_197 (C1), ET08_187 (C1), EasyJones_203 (C1), EmToTheThree_200 (C1), EmmaElysia_202 (C1), Erdmann_201 (C1), ErnieJ_192 (C1), Essence_196 (C1), Ewok_199 (C1), Flabslab_195 (C1), Fludd_200 (C1), FoxtrotP1_198 (C1), FrayBell_202 (C1), FudgeTart_195 (C1), Gabriel_202 (C1), Gamgam_200 (C1), Gizmo_205 (C1), GlutenPhree_200 (C1), IkeLoa_191 (C1), InigoMontoya_202 (C1), Iota_194 (C1), Issimir_193 (C1), Izajani_198 (C1), JPickles_195 (C1), Janiyra_203 (C1), Jaygup_195 (C1), Jedediah_199 (C1),

Jemmno_198 (C1), Jessibeth14_200 (C1), Jezreel_197 (C1), JulietS_190 (C1), JustHall_194 (C1), Kamryn_198 (C1), Kboogie_203 (C1), Khaleesi_199 (C1), Koguma_198 (C1), LRRHood_192 (C1), Latch_199 (C1), Lethe_200 (C1), LifeSavor_198 (C1), Littleton_202 (C1), Loanshark_197 (C1), LordLeafolot_200 (C1), Lukilu_190 (C1), Maby2021_199 (C1), Mangeria_200 (C1), Matsumoto_198 (C1), McGee_199 (C1), McWolfish_197 (C1), Megamind_197 (C1), Melpomini_194 (C1), MikeLiesIn_201 (C1), MoMoMixon_197 (C1), Morizzled23_197 (C1), Naija_200 (C1), Napoleon13_197 (C1), Nappy_200 (C1), Naval22_207 (C1), NedWong_199 (C1), Ngannou_196 (C1), Nidhogg_201 (C1), NoodleTree_206 (C1), Norm_199 (C1), NuevoMundo_202 (C1), ParkTD_198 (C1), Patter_200 (C1), Phlegm_203 (C1), Phox_200 (C1), Phusco_198 (C1), Pier_200 (C1), Pinkcreek_184 (C1), Pivoine_200 (C1), Pleione_204 (C1), PurduePete_200 (C1), QBert_191 (C1), Quasimodo_202 (C1), Rabinovich_193 (C1), Rahel_200 (C1), Rizal_192 (C1), RoMag_194 (C1), Roots515_202 (C1), SVoro_195 (C1), Salacia_199 (C1), Sauce_195 (C1), Sebata_201 (C1), Shaqnato_191 (C1), Shelob_201 (C1), ShiaLabeouf_196 (C1), Shnickers_197 (C1), Shrimp_201 (C1), SilverDipper_203 (C1), SmallFry_199 (C1), Sprinklers_197 (C1), Spud_194 (C1), SrishMeg2525_197 (C1), StubbySaigey_204 (C1), Stubby_184 (C1), TinyTim_198 (C1), Tonenili_220 (C1), Tortoise16_197 (C1), Trinitium_196 (C1), ValleyTerrace_200 (C1), Wally_198 (C1), Willis_200 (C1), YemiJoy2021_200 (C1), YoungMoneyMata_198 (C1), Yucca_200 (C1), Zalkecks_199 (C1), ZygoTaiga_196 (C1),

Start 4:

- Found in 1 of 225 (0.4%) of genes in pham
- No Manual Annotations of this start.
- Called 100.0% of time when present
- Phage (with cluster) where this start called: E3_gp146 (singleton),

Start 6:

- Found in 221 of 225 (98.2%) of genes in pham
- Manual Annotations of this start: 21 of 186
- Called 16.3% of time when present
- Phage (with cluster) where this start called: Adlitam_198 (C1), Alice_186 (C1), ArcherS7_199 (C1), Bigswole_204 (C1), Blackdragon_194 (C1), Blubba_189 (C1), BobaPhatt_192 (C1), CindyLou_200 (C1), Cleatunium_193 (C1), Demodog_205 (C1), Dietrick_189 (C1), Fixie_199 (C1), Fongie_200 (C1), Ghost_199 (C1), Grungle_184 (C1), HyRo_187 (C1), I3_209 (C1), JayJay_202 (C1), Labradorite_197 (C1), LinStu_198 (C1), LolaVinca_197 (C1), LookingGlass_198 (C1), Moby_196 (C1), Moiqah_195 (C1), Momo_200 (C1), PharkleMinkus_201 (C1), Pio_207 (C1), Primadonna_194 (C1), Pupusa_203 (C1), SoilZilla_195 (C1), Specks_203 (C1), Tainan_200 (C1), Teardrop_196 (C1), Turret_193 (C1), Tyke_197 (C1), Yassified_196 (C1),

Start 8:

- Found in 2 of 225 (0.9%) of genes in pham
- Manual Annotations of this start: 2 of 186
- Called 100.0% of time when present
- Phage (with cluster) where this start called: RedWattleHog_71 (DX), Stormageddon_68 (DX),

Start 9:

- Found in 221 of 225 (98.2%) of genes in pham
- Manual Annotations of this start: 9 of 186

- Called 14.5% of time when present
- Phage (with cluster) where this start called: Belieber_193 (C1), Bezza_188 (C1), BigCity_208 (C1), Bowman_197 (C1), Burrough_201 (C1), Concombre_204 (C1), DeejaClivia_188 (C1), Dessert_197 (C1), Domi_193 (C1), Duckfeet_193 (C1), EggyFarm_208 (C1), Grasshills_207 (C1), Greely_189 (C2), Guwapp_194 (C1), Halldule_192 (C1), InterFolia_202 (C1), JigglyPuff_206 (C1), Lee7_200 (C1), Lunareta_198 (C1), Maturis_197 (C1), Mikro_195 (C1), Montpel_198 (C1), OrediggerDelux_196 (C1), Phabba_194 (C2), Rocha_197 (C1), Ronan_195 (C1), ScottMcG_193 (C1), Spec_194 (C1), StephanieG_196 (C1), Substance289_196 (C1), Vortrix_218 (C1), Zeenon_202 (C1),

Start 11:

- Found in 1 of 225 (0.4%) of genes in pham
- Manual Annotations of this start: 1 of 186
- Called 100.0% of time when present
- Phage (with cluster) where this start called: JeanGrey_87 (singleton),

Summary by clusters:

There are 4 clusters represented in this pham: C2, C1, singleton, DX,

Info for manual annotations of cluster C1:

- Start number 3 was manually annotated 151 times for cluster C1.
- Start number 6 was manually annotated 21 times for cluster C1.
- Start number 9 was manually annotated 8 times for cluster C1.

Info for manual annotations of cluster C2:

- Start number 2 was manually annotated 2 times for cluster C2.
- Start number 9 was manually annotated 1 time for cluster C2.

Info for manual annotations of cluster DX:

- Start number 8 was manually annotated 2 times for cluster DX.

Gene Information:

Gene: Ablatia_199 Start: 106800, Stop: 107267, Start Num: 3

Candidate Starts for Ablatia_199:

(Start: 3 @106800 has 151 MA's), (Start: 6 @106824 has 21 MA's), (7, 106845), (Start: 9 @106863 has 9 MA's), (13, 106911), (20, 106968), (24, 107025), (26, 107061), (28, 107067), (35, 107244),

Gene: Ading_200 Start: 107118, Stop: 107585, Start Num: 3

Candidate Starts for Ading_200:

(Start: 3 @107118 has 151 MA's), (Start: 6 @107142 has 21 MA's), (7, 107163), (Start: 9 @107181 has 9 MA's), (13, 107229), (20, 107286), (24, 107343), (26, 107379), (28, 107385), (35, 107562),

Gene: Adlitam_198 Start: 105746, Stop: 106189, Start Num: 6

Candidate Starts for Adlitam_198:

(Start: 3 @105722 has 151 MA's), (Start: 6 @105746 has 21 MA's), (7, 105767), (Start: 9 @105785 has 9 MA's), (13, 105833), (20, 105890), (24, 105947), (26, 105983), (28, 105989), (35, 106166),

Gene: Alice_186 Start: 105714, Stop: 106157, Start Num: 6

Candidate Starts for Alice_186:

(Start: 3 @105690 has 151 MA's), (Start: 6 @105714 has 21 MA's), (7, 105735), (Start: 9 @105753 has 9 MA's), (13, 105801), (20, 105858), (24, 105915), (26, 105951), (28, 105957), (35, 106134),

Gene: Amataga_200 Start: 105534, Stop: 106001, Start Num: 3

Candidate Starts for Amataga_200:

(Start: 3 @105534 has 151 MA's), (Start: 6 @105558 has 21 MA's), (7, 105579), (Start: 9 @105597 has 9 MA's), (13, 105645), (20, 105702), (24, 105759), (26, 105795), (28, 105801), (35, 105978),

Gene: ArcherS7_199 Start: 106600, Stop: 107043, Start Num: 6

Candidate Starts for ArcherS7_199:

(Start: 3 @106576 has 151 MA's), (Start: 6 @106600 has 21 MA's), (7, 106621), (Start: 9 @106639 has 9 MA's), (13, 106687), (20, 106744), (24, 106801), (26, 106837), (28, 106843), (35, 107020),

Gene: Asterius_201 Start: 106252, Stop: 106719, Start Num: 3

Candidate Starts for Asterius_201:

(Start: 3 @106252 has 151 MA's), (Start: 6 @106276 has 21 MA's), (7, 106297), (Start: 9 @106315 has 9 MA's), (13, 106363), (20, 106420), (24, 106477), (26, 106513), (28, 106519), (35, 106696),

Gene: Astraea_193 Start: 105140, Stop: 105607, Start Num: 3

Candidate Starts for Astraea_193:

(Start: 3 @105140 has 151 MA's), (Start: 6 @105164 has 21 MA's), (7, 105185), (Start: 9 @105203 has 9 MA's), (13, 105251), (20, 105308), (24, 105365), (26, 105401), (28, 105407), (35, 105584),

Gene: Atlantean_199 Start: 105534, Stop: 106001, Start Num: 3

Candidate Starts for Atlantean_199:

(Start: 3 @105534 has 151 MA's), (Start: 6 @105558 has 21 MA's), (7, 105579), (Start: 9 @105597 has 9 MA's), (13, 105645), (20, 105702), (24, 105759), (26, 105795), (28, 105801), (35, 105978),

Gene: Audrick_202 Start: 105733, Stop: 106200, Start Num: 3

Candidate Starts for Audrick_202:

(Start: 3 @105733 has 151 MA's), (Start: 6 @105757 has 21 MA's), (7, 105778), (Start: 9 @105796 has 9 MA's), (13, 105844), (20, 105901), (24, 105958), (26, 105994), (28, 106000), (35, 106177),

Gene: Ava3_198 Start: 106277, Stop: 106744, Start Num: 3

Candidate Starts for Ava3_198:

(Start: 3 @106277 has 151 MA's), (Start: 6 @106301 has 21 MA's), (7, 106322), (Start: 9 @106340 has 9 MA's), (13, 106388), (20, 106445), (24, 106502), (26, 106538), (28, 106544), (35, 106721),

Gene: Babyland_202 Start: 106311, Stop: 106778, Start Num: 3

Candidate Starts for Babyland_202:

(Start: 3 @106311 has 151 MA's), (Start: 6 @106335 has 21 MA's), (7, 106356), (Start: 9 @106374 has 9 MA's), (13, 106422), (20, 106479), (24, 106536), (26, 106572), (28, 106578), (35, 106755),

Gene: BackyardAgain_196 Start: 104529, Stop: 104996, Start Num: 3

Candidate Starts for BackyardAgain_196:

(Start: 3 @104529 has 151 MA's), (Start: 6 @104553 has 21 MA's), (7, 104574), (Start: 9 @104592 has 9 MA's), (13, 104640), (20, 104697), (24, 104754), (26, 104790), (28, 104796), (35, 104973),

Gene: BadAgartude_193 Start: 105633, Stop: 106100, Start Num: 3

Candidate Starts for BadAgartude_193:

(Start: 3 @105633 has 151 MA's), (Start: 6 @105657 has 21 MA's), (7, 105678), (Start: 9 @105696 has 9 MA's), (13, 105744), (20, 105801), (24, 105858), (26, 105894), (28, 105900), (35, 106077),

Gene: BananaFence_196 Start: 105769, Stop: 106236, Start Num: 3
Candidate Starts for BananaFence_196:
(Start: 3 @105769 has 151 MA's), (Start: 6 @105793 has 21 MA's), (7, 105814), (Start: 9 @105832 has 9 MA's), (13, 105880), (20, 105937), (24, 105994), (26, 106030), (28, 106036), (35, 106213),

Gene: Bangla1971_199 Start: 105540, Stop: 106007, Start Num: 3
Candidate Starts for Bangla1971_199:
(Start: 3 @105540 has 151 MA's), (Start: 6 @105564 has 21 MA's), (7, 105585), (Start: 9 @105603 has 9 MA's), (13, 105651), (20, 105708), (24, 105765), (26, 105801), (28, 105807), (35, 105984),

Gene: Basquiat_197 Start: 105355, Stop: 105822, Start Num: 3
Candidate Starts for Basquiat_197:
(Start: 3 @105355 has 151 MA's), (Start: 6 @105379 has 21 MA's), (7, 105400), (Start: 9 @105418 has 9 MA's), (13, 105466), (20, 105523), (24, 105580), (26, 105616), (28, 105622), (35, 105799),

Gene: BeanWater_191 Start: 105572, Stop: 106039, Start Num: 3
Candidate Starts for BeanWater_191:
(Start: 3 @105572 has 151 MA's), (Start: 6 @105596 has 21 MA's), (7, 105617), (Start: 9 @105635 has 9 MA's), (13, 105683), (20, 105740), (24, 105797), (26, 105833), (28, 105839), (35, 106016),

Gene: Belieber_193 Start: 104732, Stop: 105136, Start Num: 9
Candidate Starts for Belieber_193:
(Start: 3 @104669 has 151 MA's), (Start: 6 @104693 has 21 MA's), (7, 104714), (Start: 9 @104732 has 9 MA's), (13, 104780), (20, 104837), (24, 104894), (26, 104930), (28, 104936), (35, 105113),

Gene: Bezza_188 Start: 106147, Stop: 106551, Start Num: 9
Candidate Starts for Bezza_188:
(Start: 3 @106084 has 151 MA's), (Start: 6 @106108 has 21 MA's), (7, 106129), (Start: 9 @106147 has 9 MA's), (13, 106195), (20, 106252), (24, 106309), (26, 106345), (28, 106351), (35, 106528),

Gene: BigCity_208 Start: 109206, Stop: 109610, Start Num: 9
Candidate Starts for BigCity_208:
(Start: 3 @109143 has 151 MA's), (Start: 6 @109167 has 21 MA's), (7, 109188), (Start: 9 @109206 has 9 MA's), (13, 109254), (20, 109311), (24, 109368), (26, 109404), (28, 109410), (35, 109587),

Gene: Bigswole_204 Start: 109018, Stop: 109461, Start Num: 6
Candidate Starts for Bigswole_204:
(Start: 3 @108994 has 151 MA's), (Start: 6 @109018 has 21 MA's), (7, 109039), (Start: 9 @109057 has 9 MA's), (13, 109105), (20, 109162), (24, 109219), (26, 109255), (28, 109261), (35, 109438),

Gene: Bipolarisk_198 Start: 106546, Stop: 107013, Start Num: 3
Candidate Starts for Bipolarisk_198:
(Start: 3 @106546 has 151 MA's), (Start: 6 @106570 has 21 MA's), (7, 106591), (Start: 9 @106609 has 9 MA's), (13, 106657), (20, 106714), (24, 106771), (26, 106807), (28, 106813), (35, 106990),

Gene: Blackbrain_197 Start: 106440, Stop: 106907, Start Num: 3
Candidate Starts for Blackbrain_197:
(Start: 3 @106440 has 151 MA's), (Start: 6 @106464 has 21 MA's), (7, 106485), (Start: 9 @106503 has 9 MA's), (13, 106551), (20, 106608), (24, 106665), (26, 106701), (28, 106707), (35, 106884),

Gene: Blackdragon_194 Start: 105894, Stop: 106337, Start Num: 6
Candidate Starts for Blackdragon_194:

(Start: 3 @105870 has 151 MA's), (Start: 6 @105894 has 21 MA's), (7, 105915), (Start: 9 @105933 has 9 MA's), (13, 105981), (20, 106038), (24, 106095), (26, 106131), (28, 106137), (35, 106314),

Gene: Blubba_189 Start: 109762, Stop: 110205, Start Num: 6

Candidate Starts for Blubba_189:

(Start: 3 @109738 has 151 MA's), (Start: 6 @109762 has 21 MA's), (7, 109783), (Start: 9 @109801 has 9 MA's), (13, 109849), (20, 109906), (24, 109963), (26, 109999), (28, 110005), (35, 110182),

Gene: BobaPhatt_192 Start: 104578, Stop: 105021, Start Num: 6

Candidate Starts for BobaPhatt_192:

(Start: 3 @104554 has 151 MA's), (Start: 6 @104578 has 21 MA's), (7, 104599), (Start: 9 @104617 has 9 MA's), (13, 104665), (20, 104722), (24, 104779), (26, 104815), (28, 104821), (35, 104998),

Gene: Bonray_202 Start: 107948, Stop: 108415, Start Num: 3

Candidate Starts for Bonray_202:

(Start: 3 @107948 has 151 MA's), (Start: 6 @107972 has 21 MA's), (7, 107993), (Start: 9 @108011 has 9 MA's), (13, 108059), (20, 108116), (24, 108173), (26, 108209), (28, 108215), (35, 108392),

Gene: Bowman_197 Start: 106809, Stop: 107213, Start Num: 9

Candidate Starts for Bowman_197:

(Start: 3 @106746 has 151 MA's), (Start: 6 @106770 has 21 MA's), (7, 106791), (Start: 9 @106809 has 9 MA's), (13, 106857), (20, 106914), (24, 106971), (26, 107007), (28, 107013), (35, 107190),

Gene: Bread_195 Start: 105946, Stop: 106413, Start Num: 3

Candidate Starts for Bread_195:

(Start: 3 @105946 has 151 MA's), (Start: 6 @105970 has 21 MA's), (7, 105991), (Start: 9 @106009 has 9 MA's), (13, 106057), (20, 106114), (24, 106171), (26, 106207), (28, 106213), (35, 106390),

Gene: Breeniome_198 Start: 105091, Stop: 105558, Start Num: 3

Candidate Starts for Breeniome_198:

(Start: 3 @105091 has 151 MA's), (Start: 6 @105115 has 21 MA's), (7, 105136), (Start: 9 @105154 has 9 MA's), (13, 105202), (20, 105259), (24, 105316), (26, 105352), (28, 105358), (35, 105535),

Gene: Burrough_201 Start: 107470, Stop: 107874, Start Num: 9

Candidate Starts for Burrough_201:

(Start: 3 @107407 has 151 MA's), (Start: 6 @107431 has 21 MA's), (7, 107452), (Start: 9 @107470 has 9 MA's), (13, 107518), (20, 107575), (24, 107632), (26, 107668), (28, 107674), (35, 107851),

Gene: Bxz1_189 Start: 108606, Stop: 109073, Start Num: 3

Candidate Starts for Bxz1_189:

(Start: 3 @108606 has 151 MA's), (Start: 6 @108630 has 21 MA's), (7, 108651), (Start: 9 @108669 has 9 MA's), (13, 108717), (20, 108774), (24, 108831), (26, 108867), (28, 108873), (35, 109050),

Gene: Cactojaque_195 Start: 105375, Stop: 105842, Start Num: 3

Candidate Starts for Cactojaque_195:

(Start: 3 @105375 has 151 MA's), (Start: 6 @105399 has 21 MA's), (7, 105420), (Start: 9 @105438 has 9 MA's), (13, 105486), (20, 105543), (24, 105600), (26, 105636), (28, 105642), (35, 105819),

Gene: Cali_193 Start: 107322, Stop: 107789, Start Num: 3

Candidate Starts for Cali_193:

(Start: 3 @107322 has 151 MA's), (Start: 6 @107346 has 21 MA's), (7, 107367), (Start: 9 @107385 has 9 MA's), (13, 107433), (20, 107490), (24, 107547), (26, 107583), (28, 107589), (35, 107766),

Gene: Cane17_191 Start: 110147, Stop: 110614, Start Num: 3

Candidate Starts for Cane17_191:

(Start: 3 @110147 has 151 MA's), (Start: 6 @110171 has 21 MA's), (7, 110192), (Start: 9 @110210 has 9 MA's), (13, 110258), (20, 110315), (24, 110372), (26, 110408), (28, 110414), (35, 110591),

Gene: Capablanca_204 Start: 108543, Stop: 109010, Start Num: 3

Candidate Starts for Capablanca_204:

(Start: 3 @108543 has 151 MA's), (Start: 6 @108567 has 21 MA's), (7, 108588), (Start: 9 @108606 has 9 MA's), (13, 108654), (20, 108711), (24, 108768), (26, 108804), (28, 108810), (35, 108987),

Gene: Caravan_190 Start: 106354, Stop: 106821, Start Num: 3

Candidate Starts for Caravan_190:

(Start: 3 @106354 has 151 MA's), (Start: 6 @106378 has 21 MA's), (7, 106399), (Start: 9 @106417 has 9 MA's), (13, 106465), (20, 106522), (24, 106579), (26, 106615), (28, 106621), (35, 106798),

Gene: Catera_193 Start: 105056, Stop: 105523, Start Num: 3

Candidate Starts for Catera_193:

(Start: 3 @105056 has 151 MA's), (Start: 6 @105080 has 21 MA's), (7, 105101), (Start: 9 @105119 has 9 MA's), (13, 105167), (20, 105224), (24, 105281), (26, 105317), (28, 105323), (35, 105500),

Gene: Charge21_197 Start: 105355, Stop: 105822, Start Num: 3

Candidate Starts for Charge21_197:

(Start: 3 @105355 has 151 MA's), (Start: 6 @105379 has 21 MA's), (7, 105400), (Start: 9 @105418 has 9 MA's), (13, 105466), (20, 105523), (24, 105580), (26, 105616), (28, 105622), (35, 105799),

Gene: CharlieB_193 Start: 105774, Stop: 106241, Start Num: 3

Candidate Starts for CharlieB_193:

(Start: 3 @105774 has 151 MA's), (Start: 6 @105798 has 21 MA's), (7, 105819), (Start: 9 @105837 has 9 MA's), (13, 105885), (20, 105942), (24, 105999), (26, 106035), (28, 106041), (35, 106218),

Gene: ChaylaJr_197 Start: 105783, Stop: 106250, Start Num: 3

Candidate Starts for ChaylaJr_197:

(Start: 3 @105783 has 151 MA's), (Start: 6 @105807 has 21 MA's), (7, 105828), (Start: 9 @105846 has 9 MA's), (13, 105894), (20, 105951), (24, 106008), (26, 106044), (28, 106050), (35, 106227),

Gene: ChickenPhender_196 Start: 105502, Stop: 105969, Start Num: 3

Candidate Starts for ChickenPhender_196:

(Start: 3 @105502 has 151 MA's), (Start: 6 @105526 has 21 MA's), (7, 105547), (Start: 9 @105565 has 9 MA's), (13, 105613), (20, 105670), (24, 105727), (26, 105763), (28, 105769), (35, 105946),

Gene: Chomp_199 Start: 106823, Stop: 107290, Start Num: 3

Candidate Starts for Chomp_199:

(Start: 3 @106823 has 151 MA's), (Start: 6 @106847 has 21 MA's), (7, 106868), (Start: 9 @106886 has 9 MA's), (13, 106934), (20, 106991), (24, 107048), (26, 107084), (28, 107090), (35, 107267),

Gene: CindyLou_200 Start: 107107, Stop: 107550, Start Num: 6

Candidate Starts for CindyLou_200:

(Start: 3 @107083 has 151 MA's), (Start: 6 @107107 has 21 MA's), (7, 107128), (Start: 9 @107146 has 9 MA's), (13, 107194), (20, 107251), (24, 107308), (26, 107344), (28, 107350), (35, 107527),

Gene: Cleatunium_193 Start: 105799, Stop: 106242, Start Num: 6

Candidate Starts for Cleatunium_193:

(Start: 3 @105775 has 151 MA's), (Start: 6 @105799 has 21 MA's), (7, 105820), (Start: 9 @105838 has 9 MA's), (13, 105886), (20, 105943), (24, 106000), (26, 106036), (28, 106042), (35, 106219),

Gene: Colt_191 Start: 109378, Stop: 109845, Start Num: 3

Candidate Starts for Colt_191:

(Start: 3 @109378 has 151 MA's), (Start: 6 @109402 has 21 MA's), (7, 109423), (Start: 9 @109441 has 9 MA's), (13, 109489), (20, 109546), (24, 109603), (26, 109639), (28, 109645), (35, 109822),

Gene: Concombres_204 Start: 108749, Stop: 109153, Start Num: 9

Candidate Starts for Concombres_204:

(Start: 3 @108686 has 151 MA's), (Start: 6 @108710 has 21 MA's), (7, 108731), (Start: 9 @108749 has 9 MA's), (13, 108797), (20, 108854), (24, 108911), (26, 108947), (28, 108953), (35, 109130),

Gene: DTDevon_201 Start: 107572, Stop: 108039, Start Num: 3

Candidate Starts for DTDevon_201:

(Start: 3 @107572 has 151 MA's), (Start: 6 @107596 has 21 MA's), (7, 107617), (Start: 9 @107635 has 9 MA's), (13, 107683), (20, 107740), (24, 107797), (26, 107833), (28, 107839), (35, 108016),

Gene: Daffodil_204 Start: 106846, Stop: 107313, Start Num: 3

Candidate Starts for Daffodil_204:

(Start: 3 @106846 has 151 MA's), (Start: 6 @106870 has 21 MA's), (7, 106891), (Start: 9 @106909 has 9 MA's), (13, 106957), (20, 107014), (24, 107071), (26, 107107), (28, 107113), (35, 107290),

Gene: Dandelion_207 Start: 110479, Stop: 110946, Start Num: 3

Candidate Starts for Dandelion_207:

(Start: 3 @110479 has 151 MA's), (Start: 6 @110503 has 21 MA's), (7, 110524), (Start: 9 @110542 has 9 MA's), (13, 110590), (20, 110647), (24, 110704), (26, 110740), (28, 110746), (35, 110923),

Gene: Darko_198 Start: 105773, Stop: 106240, Start Num: 3

Candidate Starts for Darko_198:

(Start: 3 @105773 has 151 MA's), (Start: 6 @105797 has 21 MA's), (7, 105818), (Start: 9 @105836 has 9 MA's), (13, 105884), (20, 105941), (24, 105998), (26, 106034), (28, 106040), (35, 106217),

Gene: DeejaClivia_188 Start: 105278, Stop: 105682, Start Num: 9

Candidate Starts for DeejaClivia_188:

(Start: 3 @105215 has 151 MA's), (Start: 6 @105239 has 21 MA's), (7, 105260), (Start: 9 @105278 has 9 MA's), (13, 105326), (20, 105383), (24, 105440), (26, 105476), (28, 105482), (35, 105659),

Gene: Delilah_198 Start: 106964, Stop: 107431, Start Num: 3

Candidate Starts for Delilah_198:

(Start: 3 @106964 has 151 MA's), (Start: 6 @106988 has 21 MA's), (7, 107009), (Start: 9 @107027 has 9 MA's), (13, 107075), (20, 107132), (24, 107189), (26, 107225), (28, 107231), (35, 107408),

Gene: Delylah_201 Start: 106944, Stop: 107411, Start Num: 3

Candidate Starts for Delylah_201:

(Start: 3 @106944 has 151 MA's), (Start: 6 @106968 has 21 MA's), (7, 106989), (Start: 9 @107007 has 9 MA's), (13, 107055), (20, 107112), (24, 107169), (26, 107205), (28, 107211), (35, 107388),

Gene: Demodog_205 Start: 108720, Stop: 109163, Start Num: 6

Candidate Starts for Demodog_205:

(Start: 3 @108696 has 151 MA's), (Start: 6 @108720 has 21 MA's), (7, 108741), (Start: 9 @108759 has 9 MA's), (13, 108807), (20, 108864), (24, 108921), (26, 108957), (28, 108963), (35, 109140),

Gene: Derek_196 Start: 106100, Stop: 106567, Start Num: 3

Candidate Starts for Derek_196:

(Start: 3 @106100 has 151 MA's), (Start: 6 @106124 has 21 MA's), (7, 106145), (Start: 9 @106163 has 9 MA's), (13, 106211), (20, 106268), (24, 106325), (26, 106361), (28, 106367), (35, 106544),

Gene: Dessert_197 Start: 105163, Stop: 105567, Start Num: 9

Candidate Starts for Dessert_197:

(Start: 3 @105100 has 151 MA's), (Start: 6 @105124 has 21 MA's), (7, 105145), (Start: 9 @105163 has 9 MA's), (13, 105211), (20, 105268), (24, 105325), (26, 105361), (28, 105367), (35, 105544),

Gene: Dietrick_189 Start: 105109, Stop: 105552, Start Num: 6

Candidate Starts for Dietrick_189:

(Start: 3 @105085 has 151 MA's), (Start: 6 @105109 has 21 MA's), (7, 105130), (Start: 9 @105148 has 9 MA's), (13, 105196), (20, 105253), (24, 105310), (26, 105346), (28, 105352), (35, 105529),

Gene: DirtMonster_193 Start: 106325, Stop: 106792, Start Num: 3

Candidate Starts for DirtMonster_193:

(Start: 3 @106325 has 151 MA's), (Start: 6 @106349 has 21 MA's), (7, 106370), (Start: 9 @106388 has 9 MA's), (13, 106436), (20, 106493), (24, 106550), (26, 106586), (28, 106592), (35, 106769),

Gene: Domi_193 Start: 106190, Stop: 106594, Start Num: 9

Candidate Starts for Domi_193:

(Start: 3 @106127 has 151 MA's), (Start: 6 @106151 has 21 MA's), (7, 106172), (Start: 9 @106190 has 9 MA's), (13, 106238), (20, 106295), (24, 106352), (26, 106388), (28, 106394), (35, 106571),

Gene: DrPhinkDaddy_197 Start: 107624, Stop: 108091, Start Num: 3

Candidate Starts for DrPhinkDaddy_197:

(Start: 3 @107624 has 151 MA's), (Start: 6 @107648 has 21 MA's), (7, 107669), (Start: 9 @107687 has 9 MA's), (13, 107735), (20, 107792), (24, 107849), (26, 107885), (28, 107891), (35, 108068),

Gene: Drazdys_197 Start: 106217, Stop: 106684, Start Num: 3

Candidate Starts for Drazdys_197:

(Start: 3 @106217 has 151 MA's), (Start: 6 @106241 has 21 MA's), (7, 106262), (Start: 9 @106280 has 9 MA's), (13, 106328), (20, 106385), (24, 106442), (26, 106478), (28, 106484), (35, 106661),

Gene: Duckfeet_193 Start: 105806, Stop: 106210, Start Num: 9

Candidate Starts for Duckfeet_193:

(Start: 3 @105743 has 151 MA's), (Start: 6 @105767 has 21 MA's), (7, 105788), (Start: 9 @105806 has 9 MA's), (13, 105854), (20, 105911), (24, 105968), (26, 106004), (28, 106010), (35, 106187),

Gene: E3_gp146 Start: 97074, Stop: 97457, Start Num: 4

Candidate Starts for E3_gp146:

(4, 97074), (10, 97134), (21, 97242), (24, 97284), (32, 97371),

Gene: ET08_187 Start: 105808, Stop: 106275, Start Num: 3

Candidate Starts for ET08_187:

(Start: 3 @105808 has 151 MA's), (Start: 6 @105832 has 21 MA's), (7, 105853), (Start: 9 @105871 has 9 MA's), (13, 105919), (20, 105976), (24, 106033), (26, 106069), (28, 106075), (35, 106252),

Gene: EasyJones_203 Start: 106598, Stop: 107065, Start Num: 3

Candidate Starts for EasyJones_203:

(Start: 3 @106598 has 151 MA's), (Start: 6 @106622 has 21 MA's), (7, 106643), (Start: 9 @106661 has 9 MA's), (13, 106709), (20, 106766), (24, 106823), (26, 106859), (28, 106865), (35, 107042),

Gene: EggyFarm_208 Start: 109207, Stop: 109611, Start Num: 9
Candidate Starts for EggyFarm_208:
(Start: 3 @109144 has 151 MA's), (Start: 6 @109168 has 21 MA's), (7, 109189), (Start: 9 @109207 has 9 MA's), (13, 109255), (20, 109312), (24, 109369), (26, 109405), (28, 109411), (35, 109588),

Gene: EmToTheThree_200 Start: 106997, Stop: 107464, Start Num: 3
Candidate Starts for EmToTheThree_200:
(Start: 3 @106997 has 151 MA's), (Start: 6 @107021 has 21 MA's), (7, 107042), (Start: 9 @107060 has 9 MA's), (13, 107108), (20, 107165), (24, 107222), (26, 107258), (28, 107264), (35, 107441),

Gene: EmmaElysia_202 Start: 106707, Stop: 107174, Start Num: 3
Candidate Starts for EmmaElysia_202:
(Start: 3 @106707 has 151 MA's), (Start: 6 @106731 has 21 MA's), (7, 106752), (Start: 9 @106770 has 9 MA's), (13, 106818), (20, 106875), (24, 106932), (26, 106968), (28, 106974), (35, 107151),

Gene: Erdmann_201 Start: 106955, Stop: 107422, Start Num: 3
Candidate Starts for Erdmann_201:
(Start: 3 @106955 has 151 MA's), (Start: 6 @106979 has 21 MA's), (7, 107000), (Start: 9 @107018 has 9 MA's), (13, 107066), (20, 107123), (24, 107180), (26, 107216), (28, 107222), (35, 107399),

Gene: ErnieJ_192 Start: 104777, Stop: 105244, Start Num: 3
Candidate Starts for ErnieJ_192:
(Start: 3 @104777 has 151 MA's), (Start: 6 @104801 has 21 MA's), (7, 104822), (Start: 9 @104840 has 9 MA's), (13, 104888), (20, 104945), (24, 105002), (26, 105038), (28, 105044), (35, 105221),

Gene: Essence_196 Start: 105429, Stop: 105896, Start Num: 3
Candidate Starts for Essence_196:
(Start: 3 @105429 has 151 MA's), (Start: 6 @105453 has 21 MA's), (7, 105474), (Start: 9 @105492 has 9 MA's), (13, 105540), (20, 105597), (24, 105654), (26, 105690), (28, 105696), (35, 105873),

Gene: Ewok_199 Start: 106874, Stop: 107341, Start Num: 3
Candidate Starts for Ewok_199:
(Start: 3 @106874 has 151 MA's), (Start: 6 @106898 has 21 MA's), (7, 106919), (Start: 9 @106937 has 9 MA's), (13, 106985), (20, 107042), (24, 107099), (26, 107135), (28, 107141), (35, 107318),

Gene: Fixie_199 Start: 106233, Stop: 106676, Start Num: 6
Candidate Starts for Fixie_199:
(Start: 3 @106209 has 151 MA's), (Start: 6 @106233 has 21 MA's), (7, 106254), (Start: 9 @106272 has 9 MA's), (13, 106320), (20, 106377), (24, 106434), (26, 106470), (28, 106476), (35, 106653),

Gene: Flabslab_195 Start: 104919, Stop: 105386, Start Num: 3
Candidate Starts for Flabslab_195:
(Start: 3 @104919 has 151 MA's), (Start: 6 @104943 has 21 MA's), (7, 104964), (Start: 9 @104982 has 9 MA's), (13, 105030), (20, 105087), (24, 105144), (26, 105180), (28, 105186), (35, 105363),

Gene: Fludd_200 Start: 106310, Stop: 106777, Start Num: 3
Candidate Starts for Fludd_200:
(Start: 3 @106310 has 151 MA's), (Start: 6 @106334 has 21 MA's), (7, 106355), (Start: 9 @106373 has 9 MA's), (13, 106421), (20, 106478), (24, 106535), (26, 106571), (28, 106577), (35, 106754),

Gene: Fongie_200 Start: 106612, Stop: 107055, Start Num: 6
Candidate Starts for Fongie_200:

(Start: 3 @106588 has 151 MA's), (Start: 6 @106612 has 21 MA's), (7, 106633), (Start: 9 @106651 has 9 MA's), (13, 106699), (20, 106756), (24, 106813), (26, 106849), (28, 106855), (35, 107032),

Gene: FoxtrotP1_198 Start: 107554, Stop: 108021, Start Num: 3

Candidate Starts for FoxtrotP1_198:

(Start: 3 @107554 has 151 MA's), (Start: 6 @107578 has 21 MA's), (7, 107599), (Start: 9 @107617 has 9 MA's), (13, 107665), (20, 107722), (24, 107779), (26, 107815), (28, 107821), (35, 107998),

Gene: FrayBell_202 Start: 106092, Stop: 106559, Start Num: 3

Candidate Starts for FrayBell_202:

(Start: 3 @106092 has 151 MA's), (Start: 6 @106116 has 21 MA's), (7, 106137), (Start: 9 @106155 has 9 MA's), (13, 106203), (20, 106260), (24, 106317), (26, 106353), (28, 106359), (35, 106536),

Gene: FudgeTart_195 Start: 106021, Stop: 106488, Start Num: 3

Candidate Starts for FudgeTart_195:

(Start: 3 @106021 has 151 MA's), (Start: 6 @106045 has 21 MA's), (7, 106066), (Start: 9 @106084 has 9 MA's), (13, 106132), (20, 106189), (24, 106246), (26, 106282), (28, 106288), (35, 106465),

Gene: Gabriel_202 Start: 105167, Stop: 105634, Start Num: 3

Candidate Starts for Gabriel_202:

(Start: 3 @105167 has 151 MA's), (Start: 6 @105191 has 21 MA's), (7, 105212), (Start: 9 @105230 has 9 MA's), (13, 105278), (20, 105335), (24, 105392), (26, 105428), (28, 105434), (35, 105611),

Gene: Gamgam_200 Start: 105524, Stop: 105991, Start Num: 3

Candidate Starts for Gamgam_200:

(Start: 3 @105524 has 151 MA's), (Start: 6 @105548 has 21 MA's), (7, 105569), (Start: 9 @105587 has 9 MA's), (13, 105635), (20, 105692), (24, 105749), (26, 105785), (28, 105791), (35, 105968),

Gene: Ghost_199 Start: 105778, Stop: 106221, Start Num: 6

Candidate Starts for Ghost_199:

(Start: 3 @105754 has 151 MA's), (Start: 6 @105778 has 21 MA's), (7, 105799), (Start: 9 @105817 has 9 MA's), (13, 105865), (20, 105922), (24, 105979), (26, 106015), (28, 106021), (35, 106198),

Gene: Gizmo_205 Start: 108872, Stop: 109339, Start Num: 3

Candidate Starts for Gizmo_205:

(Start: 3 @108872 has 151 MA's), (Start: 6 @108896 has 21 MA's), (7, 108917), (Start: 9 @108935 has 9 MA's), (13, 108983), (20, 109040), (24, 109097), (26, 109133), (28, 109139), (35, 109316),

Gene: GlutenPhree_200 Start: 105535, Stop: 106002, Start Num: 3

Candidate Starts for GlutenPhree_200:

(Start: 3 @105535 has 151 MA's), (Start: 6 @105559 has 21 MA's), (7, 105580), (Start: 9 @105598 has 9 MA's), (13, 105646), (20, 105703), (24, 105760), (26, 105796), (28, 105802), (35, 105979),

Gene: Grasshills_207 Start: 109206, Stop: 109610, Start Num: 9

Candidate Starts for Grasshills_207:

(Start: 3 @109143 has 151 MA's), (Start: 6 @109167 has 21 MA's), (7, 109188), (Start: 9 @109206 has 9 MA's), (13, 109254), (20, 109311), (24, 109368), (26, 109404), (28, 109410), (35, 109587),

Gene: Greely_189 Start: 103830, Stop: 104249, Start Num: 9

Candidate Starts for Greely_189:

(Start: 3 @103770 has 151 MA's), (Start: 6 @103794 has 21 MA's), (Start: 9 @103830 has 9 MA's), (24, 103989), (25, 104004), (28, 104031), (30, 104049),

Gene: Grungle_184 Start: 103815, Stop: 104258, Start Num: 6

Candidate Starts for Grungle_184:

(Start: 3 @103791 has 151 MA's), (Start: 6 @103815 has 21 MA's), (7, 103836), (Start: 9 @103854 has 9 MA's), (13, 103902), (20, 103959), (24, 104016), (26, 104052), (28, 104058), (35, 104235),

Gene: Guwapp_194 Start: 104342, Stop: 104746, Start Num: 9

Candidate Starts for Guwapp_194:

(Start: 3 @104279 has 151 MA's), (Start: 6 @104303 has 21 MA's), (7, 104324), (Start: 9 @104342 has 9 MA's), (13, 104390), (20, 104447), (24, 104504), (26, 104540), (28, 104546), (35, 104723),

Gene: Halldule_192 Start: 104727, Stop: 105131, Start Num: 9

Candidate Starts for Halldule_192:

(Start: 3 @104664 has 151 MA's), (Start: 6 @104688 has 21 MA's), (7, 104709), (Start: 9 @104727 has 9 MA's), (13, 104775), (20, 104832), (24, 104889), (26, 104925), (28, 104931), (35, 105108),

Gene: HyRo_187 Start: 105812, Stop: 106255, Start Num: 6

Candidate Starts for HyRo_187:

(Start: 3 @105788 has 151 MA's), (Start: 6 @105812 has 21 MA's), (7, 105833), (Start: 9 @105851 has 9 MA's), (13, 105899), (20, 105956), (24, 106013), (26, 106049), (28, 106055), (35, 106232),

Gene: I3_209 Start: 108548, Stop: 108991, Start Num: 6

Candidate Starts for I3_209:

(Start: 3 @108524 has 151 MA's), (Start: 6 @108548 has 21 MA's), (7, 108569), (Start: 9 @108587 has 9 MA's), (13, 108635), (20, 108692), (24, 108749), (26, 108785), (28, 108791), (35, 108968),

Gene: IkeLoa_191 Start: 105186, Stop: 105653, Start Num: 3

Candidate Starts for IkeLoa_191:

(Start: 3 @105186 has 151 MA's), (Start: 6 @105210 has 21 MA's), (7, 105231), (Start: 9 @105249 has 9 MA's), (13, 105297), (20, 105354), (24, 105411), (26, 105447), (28, 105453), (35, 105630),

Gene: InigoMontoya_202 Start: 106198, Stop: 106665, Start Num: 3

Candidate Starts for InigoMontoya_202:

(Start: 3 @106198 has 151 MA's), (Start: 6 @106222 has 21 MA's), (7, 106243), (Start: 9 @106261 has 9 MA's), (13, 106309), (20, 106366), (24, 106423), (26, 106459), (28, 106465), (35, 106642),

Gene: InterFolia_202 Start: 107961, Stop: 108365, Start Num: 9

Candidate Starts for InterFolia_202:

(Start: 3 @107898 has 151 MA's), (Start: 6 @107922 has 21 MA's), (7, 107943), (Start: 9 @107961 has 9 MA's), (13, 108009), (20, 108066), (24, 108123), (26, 108159), (28, 108165), (35, 108342),

Gene: Iota_194 Start: 105883, Stop: 106350, Start Num: 3

Candidate Starts for Iota_194:

(Start: 3 @105883 has 151 MA's), (Start: 6 @105907 has 21 MA's), (7, 105928), (Start: 9 @105946 has 9 MA's), (13, 105994), (20, 106051), (24, 106108), (26, 106144), (28, 106150), (35, 106327),

Gene: Issimir_193 Start: 106145, Stop: 106612, Start Num: 3

Candidate Starts for Issimir_193:

(Start: 3 @106145 has 151 MA's), (Start: 6 @106169 has 21 MA's), (7, 106190), (Start: 9 @106208 has 9 MA's), (13, 106256), (20, 106313), (24, 106370), (26, 106406), (28, 106412), (35, 106589),

Gene: Izajani_198 Start: 107014, Stop: 107481, Start Num: 3

Candidate Starts for Izajani_198:

(Start: 3 @107014 has 151 MA's), (Start: 6 @107038 has 21 MA's), (7, 107059), (Start: 9 @107077 has 9 MA's), (13, 107125), (20, 107182), (24, 107239), (26, 107275), (28, 107281), (35, 107458),

Gene: JPickles_195 Start: 104183, Stop: 104650, Start Num: 3

Candidate Starts for JPickles_195:

(Start: 3 @104183 has 151 MA's), (Start: 6 @104207 has 21 MA's), (7, 104228), (Start: 9 @104246 has 9 MA's), (13, 104294), (20, 104351), (24, 104408), (26, 104444), (28, 104450), (35, 104627),

Gene: Janiyra_203 Start: 106732, Stop: 107199, Start Num: 3

Candidate Starts for Janiyra_203:

(Start: 3 @106732 has 151 MA's), (Start: 6 @106756 has 21 MA's), (7, 106777), (Start: 9 @106795 has 9 MA's), (13, 106843), (20, 106900), (24, 106957), (26, 106993), (28, 106999), (35, 107176),

Gene: JayJay_202 Start: 107453, Stop: 107896, Start Num: 6

Candidate Starts for JayJay_202:

(Start: 3 @107429 has 151 MA's), (Start: 6 @107453 has 21 MA's), (7, 107474), (Start: 9 @107492 has 9 MA's), (13, 107540), (20, 107597), (24, 107654), (26, 107690), (28, 107696), (35, 107873),

Gene: Jaygup_195 Start: 105244, Stop: 105711, Start Num: 3

Candidate Starts for Jaygup_195:

(Start: 3 @105244 has 151 MA's), (Start: 6 @105268 has 21 MA's), (7, 105289), (Start: 9 @105307 has 9 MA's), (13, 105355), (20, 105412), (24, 105469), (26, 105505), (28, 105511), (35, 105688),

Gene: JeanGrey_87 Start: 69433, Stop: 69756, Start Num: 11

Candidate Starts for JeanGrey_87:

(Start: 11 @69433 has 1 MA's), (12, 69463), (14, 69478), (27, 69610), (29, 69613), (33, 69736),

Gene: Jedediah_199 Start: 106297, Stop: 106764, Start Num: 3

Candidate Starts for Jedediah_199:

(Start: 3 @106297 has 151 MA's), (Start: 6 @106321 has 21 MA's), (7, 106342), (Start: 9 @106360 has 9 MA's), (13, 106408), (20, 106465), (24, 106522), (26, 106558), (28, 106564), (35, 106741),

Gene: Jemmno_198 Start: 105126, Stop: 105593, Start Num: 3

Candidate Starts for Jemmno_198:

(Start: 3 @105126 has 151 MA's), (Start: 6 @105150 has 21 MA's), (7, 105171), (Start: 9 @105189 has 9 MA's), (13, 105237), (20, 105294), (24, 105351), (26, 105387), (28, 105393), (35, 105570),

Gene: Jessibeth14_200 Start: 107623, Stop: 108090, Start Num: 3

Candidate Starts for Jessibeth14_200:

(Start: 3 @107623 has 151 MA's), (Start: 6 @107647 has 21 MA's), (7, 107668), (Start: 9 @107686 has 9 MA's), (13, 107734), (20, 107791), (24, 107848), (26, 107884), (28, 107890), (35, 108067),

Gene: Jezreel_197 Start: 106692, Stop: 107159, Start Num: 3

Candidate Starts for Jezreel_197:

(Start: 3 @106692 has 151 MA's), (Start: 6 @106716 has 21 MA's), (7, 106737), (Start: 9 @106755 has 9 MA's), (13, 106803), (20, 106860), (24, 106917), (26, 106953), (28, 106959), (35, 107136),

Gene: JigglyPuff_206 Start: 108757, Stop: 109161, Start Num: 9

Candidate Starts for JigglyPuff_206:

(Start: 3 @108694 has 151 MA's), (Start: 6 @108718 has 21 MA's), (7, 108739), (Start: 9 @108757 has 9 MA's), (13, 108805), (20, 108862), (24, 108919), (26, 108955), (28, 108961), (35, 109138),

Gene: JulietS_190 Start: 103415, Stop: 103882, Start Num: 3

Candidate Starts for JulietS_190:

(Start: 3 @103415 has 151 MA's), (Start: 6 @103439 has 21 MA's), (7, 103460), (Start: 9 @103478 has 9 MA's), (13, 103526), (20, 103583), (24, 103640), (26, 103676), (28, 103682), (35, 103859),

Gene: JustHall_194 Start: 105639, Stop: 106106, Start Num: 3

Candidate Starts for JustHall_194:

(Start: 3 @105639 has 151 MA's), (Start: 6 @105663 has 21 MA's), (7, 105684), (Start: 9 @105702 has 9 MA's), (13, 105750), (20, 105807), (24, 105864), (26, 105900), (28, 105906), (35, 106083),

Gene: Kamryn_198 Start: 106960, Stop: 107427, Start Num: 3

Candidate Starts for Kamryn_198:

(Start: 3 @106960 has 151 MA's), (Start: 6 @106984 has 21 MA's), (7, 107005), (Start: 9 @107023 has 9 MA's), (13, 107071), (20, 107128), (24, 107185), (26, 107221), (28, 107227), (35, 107404),

Gene: Kboogie_203 Start: 106297, Stop: 106764, Start Num: 3

Candidate Starts for Kboogie_203:

(Start: 3 @106297 has 151 MA's), (Start: 6 @106321 has 21 MA's), (7, 106342), (Start: 9 @106360 has 9 MA's), (13, 106408), (20, 106465), (24, 106522), (26, 106558), (28, 106564), (35, 106741),

Gene: Khaleesi_199 Start: 107090, Stop: 107557, Start Num: 3

Candidate Starts for Khaleesi_199:

(Start: 3 @107090 has 151 MA's), (Start: 6 @107114 has 21 MA's), (7, 107135), (Start: 9 @107153 has 9 MA's), (13, 107201), (20, 107258), (24, 107315), (26, 107351), (28, 107357), (35, 107534),

Gene: Koguma_198 Start: 105641, Stop: 106108, Start Num: 3

Candidate Starts for Koguma_198:

(Start: 3 @105641 has 151 MA's), (Start: 6 @105665 has 21 MA's), (7, 105686), (Start: 9 @105704 has 9 MA's), (13, 105752), (20, 105809), (24, 105866), (26, 105902), (28, 105908), (35, 106085),

Gene: LRRHood_192 Start: 105986, Stop: 106453, Start Num: 3

Candidate Starts for LRRHood_192:

(Start: 3 @105986 has 151 MA's), (Start: 6 @106010 has 21 MA's), (7, 106031), (Start: 9 @106049 has 9 MA's), (13, 106097), (20, 106154), (24, 106211), (26, 106247), (28, 106253), (35, 106430),

Gene: Labradorite_197 Start: 104760, Stop: 105203, Start Num: 6

Candidate Starts for Labradorite_197:

(Start: 3 @104736 has 151 MA's), (Start: 6 @104760 has 21 MA's), (7, 104781), (Start: 9 @104799 has 9 MA's), (13, 104847), (20, 104904), (24, 104961), (26, 104997), (28, 105003), (35, 105180),

Gene: Latch_199 Start: 105534, Stop: 106001, Start Num: 3

Candidate Starts for Latch_199:

(Start: 3 @105534 has 151 MA's), (Start: 6 @105558 has 21 MA's), (7, 105579), (Start: 9 @105597 has 9 MA's), (13, 105645), (20, 105702), (24, 105759), (26, 105795), (28, 105801), (35, 105978),

Gene: Lee7_200 Start: 108533, Stop: 108937, Start Num: 9

Candidate Starts for Lee7_200:

(Start: 3 @108470 has 151 MA's), (Start: 6 @108494 has 21 MA's), (7, 108515), (Start: 9 @108533 has 9 MA's), (13, 108581), (20, 108638), (24, 108695), (26, 108731), (28, 108737), (35, 108914),

Gene: Lethe_200 Start: 107733, Stop: 108200, Start Num: 3

Candidate Starts for Lethe_200:

(Start: 3 @107733 has 151 MA's), (Start: 6 @107757 has 21 MA's), (7, 107778), (Start: 9 @107796 has 9 MA's), (13, 107844), (20, 107901), (24, 107958), (26, 107994), (28, 108000), (35, 108177),

Gene: LifeSavor_198 Start: 106059, Stop: 106526, Start Num: 3

Candidate Starts for LifeSavor_198:

(Start: 3 @106059 has 151 MA's), (Start: 6 @106083 has 21 MA's), (7, 106104), (Start: 9 @106122 has 9 MA's), (13, 106170), (20, 106227), (24, 106284), (26, 106320), (28, 106326), (35, 106503),

Gene: LinStu_198 Start: 106606, Stop: 107049, Start Num: 6

Candidate Starts for LinStu_198:

(Start: 3 @106582 has 151 MA's), (Start: 6 @106606 has 21 MA's), (7, 106627), (Start: 9 @106645 has 9 MA's), (13, 106693), (20, 106750), (24, 106807), (26, 106843), (28, 106849), (35, 107026),

Gene: Littleton_202 Start: 106771, Stop: 107238, Start Num: 3

Candidate Starts for Littleton_202:

(Start: 3 @106771 has 151 MA's), (Start: 6 @106795 has 21 MA's), (7, 106816), (Start: 9 @106834 has 9 MA's), (13, 106882), (20, 106939), (24, 106996), (26, 107032), (28, 107038), (35, 107215),

Gene: Loanshark_197 Start: 106405, Stop: 106872, Start Num: 3

Candidate Starts for Loanshark_197:

(Start: 3 @106405 has 151 MA's), (Start: 6 @106429 has 21 MA's), (7, 106450), (Start: 9 @106468 has 9 MA's), (13, 106516), (20, 106573), (24, 106630), (26, 106666), (28, 106672), (35, 106849),

Gene: LolaVinca_197 Start: 107352, Stop: 107795, Start Num: 6

Candidate Starts for LolaVinca_197:

(Start: 3 @107328 has 151 MA's), (Start: 6 @107352 has 21 MA's), (7, 107373), (Start: 9 @107391 has 9 MA's), (13, 107439), (20, 107496), (24, 107553), (26, 107589), (28, 107595), (35, 107772),

Gene: LookingGlass_198 Start: 106312, Stop: 106755, Start Num: 6

Candidate Starts for LookingGlass_198:

(Start: 3 @106288 has 151 MA's), (Start: 6 @106312 has 21 MA's), (7, 106333), (Start: 9 @106351 has 9 MA's), (13, 106399), (20, 106456), (24, 106513), (26, 106549), (28, 106555), (35, 106732),

Gene: LordLeafolot_200 Start: 106940, Stop: 107407, Start Num: 3

Candidate Starts for LordLeafolot_200:

(Start: 3 @106940 has 151 MA's), (Start: 6 @106964 has 21 MA's), (7, 106985), (Start: 9 @107003 has 9 MA's), (13, 107051), (20, 107108), (24, 107165), (26, 107201), (28, 107207), (35, 107384),

Gene: Lukilu_190 Start: 106996, Stop: 107463, Start Num: 3

Candidate Starts for Lukilu_190:

(Start: 3 @106996 has 151 MA's), (Start: 6 @107020 has 21 MA's), (7, 107041), (Start: 9 @107059 has 9 MA's), (13, 107107), (20, 107164), (24, 107221), (26, 107257), (28, 107263), (35, 107440),

Gene: Lunareta_198 Start: 108004, Stop: 108408, Start Num: 9

Candidate Starts for Lunareta_198:

(Start: 3 @107941 has 151 MA's), (Start: 6 @107965 has 21 MA's), (7, 107986), (Start: 9 @108004 has 9 MA's), (13, 108052), (20, 108109), (24, 108166), (26, 108202), (28, 108208), (35, 108385),

Gene: Maby2021_199 Start: 107534, Stop: 108001, Start Num: 3

Candidate Starts for Maby2021_199:

(Start: 3 @107534 has 151 MA's), (Start: 6 @107558 has 21 MA's), (7, 107579), (Start: 9 @107597 has 9 MA's), (13, 107645), (20, 107702), (24, 107759), (26, 107795), (28, 107801), (35, 107978),

Gene: Mangeria_200 Start: 107327, Stop: 107794, Start Num: 3

Candidate Starts for Mangeria_200:

(Start: 3 @107327 has 151 MA's), (Start: 6 @107351 has 21 MA's), (7, 107372), (Start: 9 @107390 has 9 MA's), (13, 107438), (20, 107495), (24, 107552), (26, 107588), (28, 107594), (35, 107771),

Gene: Matsumoto_198 Start: 106285, Stop: 106752, Start Num: 3

Candidate Starts for Matsumoto_198:

(Start: 3 @106285 has 151 MA's), (Start: 6 @106309 has 21 MA's), (7, 106330), (Start: 9 @106348 has 9 MA's), (13, 106396), (20, 106453), (24, 106510), (26, 106546), (28, 106552), (35, 106729),

Gene: Maturis_197 Start: 106860, Stop: 107264, Start Num: 9

Candidate Starts for Maturis_197:

(Start: 3 @106797 has 151 MA's), (Start: 6 @106821 has 21 MA's), (7, 106842), (Start: 9 @106860 has 9 MA's), (13, 106908), (20, 106965), (24, 107022), (26, 107058), (28, 107064), (35, 107241),

Gene: McGee_199 Start: 105479, Stop: 105946, Start Num: 3

Candidate Starts for McGee_199:

(Start: 3 @105479 has 151 MA's), (Start: 6 @105503 has 21 MA's), (7, 105524), (Start: 9 @105542 has 9 MA's), (13, 105590), (20, 105647), (24, 105704), (26, 105740), (28, 105746), (35, 105923),

Gene: McWolfish_197 Start: 106301, Stop: 106768, Start Num: 3

Candidate Starts for McWolfish_197:

(Start: 3 @106301 has 151 MA's), (Start: 6 @106325 has 21 MA's), (7, 106346), (Start: 9 @106364 has 9 MA's), (13, 106412), (20, 106469), (24, 106526), (26, 106562), (28, 106568), (35, 106745),

Gene: Megamind_197 Start: 106592, Stop: 107059, Start Num: 3

Candidate Starts for Megamind_197:

(Start: 3 @106592 has 151 MA's), (Start: 6 @106616 has 21 MA's), (7, 106637), (Start: 9 @106655 has 9 MA's), (13, 106703), (20, 106760), (24, 106817), (26, 106853), (28, 106859), (35, 107036),

Gene: Melpomini_194 Start: 105068, Stop: 105535, Start Num: 3

Candidate Starts for Melpomini_194:

(Start: 3 @105068 has 151 MA's), (Start: 6 @105092 has 21 MA's), (7, 105113), (Start: 9 @105131 has 9 MA's), (13, 105179), (20, 105236), (24, 105293), (26, 105329), (28, 105335), (35, 105512),

Gene: MikeLiesIn_201 Start: 107728, Stop: 108195, Start Num: 3

Candidate Starts for MikeLiesIn_201:

(Start: 3 @107728 has 151 MA's), (Start: 6 @107752 has 21 MA's), (7, 107773), (Start: 9 @107791 has 9 MA's), (13, 107839), (20, 107896), (24, 107953), (26, 107989), (28, 107995), (35, 108172),

Gene: Mikro_195 Start: 108031, Stop: 108435, Start Num: 9

Candidate Starts for Mikro_195:

(Start: 3 @107968 has 151 MA's), (Start: 6 @107992 has 21 MA's), (7, 108013), (Start: 9 @108031 has 9 MA's), (13, 108079), (20, 108136), (24, 108193), (26, 108229), (28, 108235), (35, 108412),

Gene: MoMoMixon_197 Start: 106458, Stop: 106925, Start Num: 3

Candidate Starts for MoMoMixon_197:

(Start: 3 @106458 has 151 MA's), (Start: 6 @106482 has 21 MA's), (7, 106503), (Start: 9 @106521 has 9 MA's), (13, 106569), (20, 106626), (24, 106683), (26, 106719), (28, 106725), (35, 106902),

Gene: Moby_196 Start: 105766, Stop: 106209, Start Num: 6

Candidate Starts for Moby_196:

(Start: 3 @105742 has 151 MA's), (Start: 6 @105766 has 21 MA's), (7, 105787), (Start: 9 @105805 has 9 MA's), (13, 105853), (20, 105910), (24, 105967), (26, 106003), (28, 106009), (35, 106186),

Gene: Moiqah_195 Start: 105743, Stop: 106186, Start Num: 6
Candidate Starts for Moiqah_195:
(Start: 3 @105719 has 151 MA's), (Start: 6 @105743 has 21 MA's), (7, 105764), (Start: 9 @105782 has 9 MA's), (13, 105830), (20, 105887), (24, 105944), (26, 105980), (28, 105986), (35, 106163),

Gene: Momo_200 Start: 105558, Stop: 106001, Start Num: 6
Candidate Starts for Momo_200:
(Start: 3 @105534 has 151 MA's), (Start: 6 @105558 has 21 MA's), (7, 105579), (Start: 9 @105597 has 9 MA's), (13, 105645), (20, 105702), (24, 105759), (26, 105795), (28, 105801), (35, 105978),

Gene: Montpel_198 Start: 108002, Stop: 108406, Start Num: 9
Candidate Starts for Montpel_198:
(Start: 3 @107939 has 151 MA's), (Start: 6 @107963 has 21 MA's), (7, 107984), (Start: 9 @108002 has 9 MA's), (13, 108050), (20, 108107), (24, 108164), (26, 108200), (28, 108206), (35, 108383),

Gene: Morizzled23_197 Start: 105210, Stop: 105677, Start Num: 3
Candidate Starts for Morizzled23_197:
(Start: 3 @105210 has 151 MA's), (Start: 6 @105234 has 21 MA's), (7, 105255), (Start: 9 @105273 has 9 MA's), (13, 105321), (20, 105378), (24, 105435), (26, 105471), (28, 105477), (35, 105654),

Gene: Myrna_184 Start: 103419, Stop: 103916, Start Num: 2
Candidate Starts for Myrna_184:
(Start: 2 @103419 has 2 MA's), (Start: 3 @103437 has 151 MA's), (Start: 6 @103461 has 21 MA's), (Start: 9 @103497 has 9 MA's), (15, 103557), (24, 103656), (25, 103671), (28, 103698), (30, 103716),

Gene: Naija_200 Start: 106237, Stop: 106704, Start Num: 3
Candidate Starts for Naija_200:
(Start: 3 @106237 has 151 MA's), (Start: 6 @106261 has 21 MA's), (7, 106282), (Start: 9 @106300 has 9 MA's), (13, 106348), (20, 106405), (24, 106462), (26, 106498), (28, 106504), (35, 106681),

Gene: Napoleon13_197 Start: 105574, Stop: 106041, Start Num: 3
Candidate Starts for Napoleon13_197:
(Start: 3 @105574 has 151 MA's), (Start: 6 @105598 has 21 MA's), (7, 105619), (Start: 9 @105637 has 9 MA's), (13, 105685), (20, 105742), (24, 105799), (26, 105835), (28, 105841), (35, 106018),

Gene: Nappy_200 Start: 107930, Stop: 108397, Start Num: 3
Candidate Starts for Nappy_200:
(Start: 3 @107930 has 151 MA's), (Start: 6 @107954 has 21 MA's), (7, 107975), (Start: 9 @107993 has 9 MA's), (13, 108041), (20, 108098), (24, 108155), (26, 108191), (28, 108197), (35, 108374),

Gene: Naval22_207 Start: 108323, Stop: 108790, Start Num: 3
Candidate Starts for Naval22_207:
(Start: 3 @108323 has 151 MA's), (Start: 6 @108347 has 21 MA's), (7, 108368), (Start: 9 @108386 has 9 MA's), (13, 108434), (20, 108491), (24, 108548), (26, 108584), (28, 108590), (35, 108767),

Gene: NedWong_199 Start: 106979, Stop: 107446, Start Num: 3
Candidate Starts for NedWong_199:
(Start: 3 @106979 has 151 MA's), (Start: 6 @107003 has 21 MA's), (7, 107024), (Start: 9 @107042 has 9 MA's), (13, 107090), (20, 107147), (24, 107204), (26, 107240), (28, 107246), (35, 107423),

Gene: Ngannou_196 Start: 104516, Stop: 104983, Start Num: 3
Candidate Starts for Ngannou_196:

(Start: 3 @104516 has 151 MA's), (Start: 6 @104540 has 21 MA's), (7, 104561), (Start: 9 @104579 has 9 MA's), (13, 104627), (20, 104684), (24, 104741), (26, 104777), (28, 104783), (35, 104960),

Gene: Nidhogg_201 Start: 107372, Stop: 107839, Start Num: 3

Candidate Starts for Nidhogg_201:

(Start: 3 @107372 has 151 MA's), (Start: 6 @107396 has 21 MA's), (7, 107417), (Start: 9 @107435 has 9 MA's), (13, 107483), (20, 107540), (24, 107597), (26, 107633), (28, 107639), (35, 107816),

Gene: NoodleTree_206 Start: 107279, Stop: 107746, Start Num: 3

Candidate Starts for NoodleTree_206:

(Start: 3 @107279 has 151 MA's), (Start: 6 @107303 has 21 MA's), (7, 107324), (Start: 9 @107342 has 9 MA's), (13, 107390), (20, 107447), (24, 107504), (26, 107540), (28, 107546), (35, 107723),

Gene: Norm_199 Start: 106972, Stop: 107439, Start Num: 3

Candidate Starts for Norm_199:

(Start: 3 @106972 has 151 MA's), (Start: 6 @106996 has 21 MA's), (7, 107017), (Start: 9 @107035 has 9 MA's), (13, 107083), (20, 107140), (24, 107197), (26, 107233), (28, 107239), (35, 107416),

Gene: NuevoMundo_202 Start: 108524, Stop: 108991, Start Num: 3

Candidate Starts for NuevoMundo_202:

(Start: 3 @108524 has 151 MA's), (Start: 6 @108548 has 21 MA's), (7, 108569), (Start: 9 @108587 has 9 MA's), (13, 108635), (20, 108692), (24, 108749), (26, 108785), (28, 108791), (35, 108968),

Gene: OrediggerDelux_196 Start: 107574, Stop: 107978, Start Num: 9

Candidate Starts for OrediggerDelux_196:

(Start: 3 @107511 has 151 MA's), (Start: 6 @107535 has 21 MA's), (7, 107556), (Start: 9 @107574 has 9 MA's), (13, 107622), (20, 107679), (24, 107736), (26, 107772), (28, 107778), (35, 107955),

Gene: ParkTD_198 Start: 106843, Stop: 107310, Start Num: 3

Candidate Starts for ParkTD_198:

(Start: 3 @106843 has 151 MA's), (Start: 6 @106867 has 21 MA's), (7, 106888), (Start: 9 @106906 has 9 MA's), (13, 106954), (20, 107011), (24, 107068), (26, 107104), (28, 107110), (35, 107287),

Gene: Patter_200 Start: 105548, Stop: 106015, Start Num: 3

Candidate Starts for Patter_200:

(Start: 3 @105548 has 151 MA's), (Start: 6 @105572 has 21 MA's), (7, 105593), (Start: 9 @105611 has 9 MA's), (13, 105659), (20, 105716), (24, 105773), (26, 105809), (28, 105815), (35, 105992),

Gene: Phabba_194 Start: 103405, Stop: 103824, Start Num: 9

Candidate Starts for Phabba_194:

(1, 103282), (Start: 3 @103345 has 151 MA's), (Start: 6 @103369 has 21 MA's), (Start: 9 @103405 has 9 MA's), (24, 103564), (25, 103579), (28, 103606), (30, 103624),

Gene: PharkleMinkus_201 Start: 106115, Stop: 106558, Start Num: 6

Candidate Starts for PharkleMinkus_201:

(Start: 3 @106091 has 151 MA's), (Start: 6 @106115 has 21 MA's), (7, 106136), (Start: 9 @106154 has 9 MA's), (13, 106202), (20, 106259), (24, 106316), (26, 106352), (28, 106358), (35, 106535),

Gene: Phlegm_203 Start: 106237, Stop: 106704, Start Num: 3

Candidate Starts for Phlegm_203:

(Start: 3 @106237 has 151 MA's), (Start: 6 @106261 has 21 MA's), (7, 106282), (Start: 9 @106300 has 9 MA's), (13, 106348), (20, 106405), (24, 106462), (26, 106498), (28, 106504), (35, 106681),

Gene: Phox_200 Start: 107192, Stop: 107659, Start Num: 3

Candidate Starts for Phox_200:

(Start: 3 @107192 has 151 MA's), (Start: 6 @107216 has 21 MA's), (7, 107237), (Start: 9 @107255 has 9 MA's), (13, 107303), (20, 107360), (24, 107417), (26, 107453), (28, 107459), (35, 107636),

Gene: Phusco_198 Start: 105378, Stop: 105845, Start Num: 3

Candidate Starts for Phusco_198:

(Start: 3 @105378 has 151 MA's), (Start: 6 @105402 has 21 MA's), (7, 105423), (Start: 9 @105441 has 9 MA's), (13, 105489), (20, 105546), (24, 105603), (26, 105639), (28, 105645), (35, 105822),

Gene: Pier_200 Start: 108066, Stop: 108533, Start Num: 3

Candidate Starts for Pier_200:

(Start: 3 @108066 has 151 MA's), (Start: 6 @108090 has 21 MA's), (7, 108111), (Start: 9 @108129 has 9 MA's), (13, 108177), (20, 108234), (24, 108291), (26, 108327), (28, 108333), (35, 108510),

Gene: Pinkcreek_184 Start: 105754, Stop: 106221, Start Num: 3

Candidate Starts for Pinkcreek_184:

(Start: 3 @105754 has 151 MA's), (Start: 6 @105778 has 21 MA's), (7, 105799), (Start: 9 @105817 has 9 MA's), (13, 105865), (20, 105922), (24, 105979), (26, 106015), (28, 106021), (35, 106198),

Gene: Pio_207 Start: 109285, Stop: 109728, Start Num: 6

Candidate Starts for Pio_207:

(Start: 3 @109261 has 151 MA's), (Start: 6 @109285 has 21 MA's), (7, 109306), (Start: 9 @109324 has 9 MA's), (13, 109372), (20, 109429), (24, 109486), (26, 109522), (28, 109528), (35, 109705),

Gene: Pivoine_200 Start: 106237, Stop: 106704, Start Num: 3

Candidate Starts for Pivoine_200:

(Start: 3 @106237 has 151 MA's), (Start: 6 @106261 has 21 MA's), (7, 106282), (Start: 9 @106300 has 9 MA's), (13, 106348), (20, 106405), (24, 106462), (26, 106498), (28, 106504), (35, 106681),

Gene: Pleione_204 Start: 107321, Stop: 107788, Start Num: 3

Candidate Starts for Pleione_204:

(Start: 3 @107321 has 151 MA's), (Start: 6 @107345 has 21 MA's), (7, 107366), (Start: 9 @107384 has 9 MA's), (13, 107432), (20, 107489), (24, 107546), (26, 107582), (28, 107588), (35, 107765),

Gene: Primadonna_194 Start: 105922, Stop: 106365, Start Num: 6

Candidate Starts for Primadonna_194:

(Start: 3 @105898 has 151 MA's), (Start: 6 @105922 has 21 MA's), (7, 105943), (Start: 9 @105961 has 9 MA's), (13, 106009), (20, 106066), (24, 106123), (26, 106159), (28, 106165), (35, 106342),

Gene: Pupusa_203 Start: 107590, Stop: 108033, Start Num: 6

Candidate Starts for Pupusa_203:

(Start: 3 @107566 has 151 MA's), (Start: 6 @107590 has 21 MA's), (7, 107611), (Start: 9 @107629 has 9 MA's), (13, 107677), (20, 107734), (24, 107791), (26, 107827), (28, 107833), (35, 108010),

Gene: PurduePete_200 Start: 107549, Stop: 108016, Start Num: 3

Candidate Starts for PurduePete_200:

(Start: 3 @107549 has 151 MA's), (Start: 6 @107573 has 21 MA's), (7, 107594), (Start: 9 @107612 has 9 MA's), (13, 107660), (20, 107717), (24, 107774), (26, 107810), (28, 107816), (35, 107993),

Gene: QBert_191 Start: 105593, Stop: 106060, Start Num: 3

Candidate Starts for QBert_191:

(Start: 3 @105593 has 151 MA's), (Start: 6 @105617 has 21 MA's), (7, 105638), (Start: 9 @105656 has 9 MA's), (13, 105704), (20, 105761), (24, 105818), (26, 105854), (28, 105860), (35, 106037),

Gene: Quasimodo_202 Start: 107172, Stop: 107639, Start Num: 3

Candidate Starts for Quasimodo_202:

(Start: 3 @107172 has 151 MA's), (Start: 6 @107196 has 21 MA's), (7, 107217), (Start: 9 @107235 has 9 MA's), (13, 107283), (20, 107340), (24, 107397), (26, 107433), (28, 107439), (35, 107616),

Gene: Rabinovish_193 Start: 107447, Stop: 107914, Start Num: 3

Candidate Starts for Rabinovish_193:

(Start: 3 @107447 has 151 MA's), (Start: 6 @107471 has 21 MA's), (7, 107492), (Start: 9 @107510 has 9 MA's), (13, 107558), (20, 107615), (24, 107672), (26, 107708), (28, 107714), (35, 107891),

Gene: Rahel_200 Start: 105972, Stop: 106439, Start Num: 3

Candidate Starts for Rahel_200:

(Start: 3 @105972 has 151 MA's), (Start: 6 @105996 has 21 MA's), (7, 106017), (Start: 9 @106035 has 9 MA's), (13, 106083), (20, 106140), (24, 106197), (26, 106233), (28, 106239), (35, 106416),

Gene: RedWattleHog_71 Start: 65476, Stop: 65829, Start Num: 8

Candidate Starts for RedWattleHog_71:

(Start: 8 @65476 has 2 MA's), (12, 65527), (16, 65557), (17, 65563), (22, 65611), (23, 65635), (30, 65698), (31, 65728), (32, 65737), (34, 65815),

Gene: Rizal_192 Start: 104799, Stop: 105266, Start Num: 3

Candidate Starts for Rizal_192:

(Start: 3 @104799 has 151 MA's), (Start: 6 @104823 has 21 MA's), (7, 104844), (Start: 9 @104862 has 9 MA's), (13, 104910), (20, 104967), (24, 105024), (26, 105060), (28, 105066), (35, 105243),

Gene: RoMag_194 Start: 106283, Stop: 106750, Start Num: 3

Candidate Starts for RoMag_194:

(Start: 3 @106283 has 151 MA's), (Start: 6 @106307 has 21 MA's), (7, 106328), (Start: 9 @106346 has 9 MA's), (13, 106394), (20, 106451), (24, 106508), (26, 106544), (28, 106550), (35, 106727),

Gene: Rocha_197 Start: 106097, Stop: 106501, Start Num: 9

Candidate Starts for Rocha_197:

(Start: 3 @106034 has 151 MA's), (Start: 6 @106058 has 21 MA's), (7, 106079), (Start: 9 @106097 has 9 MA's), (13, 106145), (20, 106202), (24, 106259), (26, 106295), (28, 106301), (35, 106478),

Gene: Ronan_195 Start: 104738, Stop: 105142, Start Num: 9

Candidate Starts for Ronan_195:

(Start: 3 @104675 has 151 MA's), (Start: 6 @104699 has 21 MA's), (7, 104720), (Start: 9 @104738 has 9 MA's), (13, 104786), (20, 104843), (24, 104900), (26, 104936), (28, 104942), (35, 105119),

Gene: Roots515_202 Start: 108100, Stop: 108567, Start Num: 3

Candidate Starts for Roots515_202:

(Start: 3 @108100 has 151 MA's), (Start: 6 @108124 has 21 MA's), (7, 108145), (Start: 9 @108163 has 9 MA's), (13, 108211), (20, 108268), (24, 108325), (26, 108361), (28, 108367), (35, 108544),

Gene: SVoro_195 Start: 106584, Stop: 107051, Start Num: 3

Candidate Starts for SVoro_195:

(Start: 3 @106584 has 151 MA's), (Start: 6 @106608 has 21 MA's), (7, 106629), (Start: 9 @106647 has 9 MA's), (13, 106695), (20, 106752), (24, 106809), (26, 106845), (28, 106851), (35, 107028),

Gene: Salacia_199 Start: 106375, Stop: 106842, Start Num: 3

Candidate Starts for Salacia_199:

(Start: 3 @106375 has 151 MA's), (Start: 6 @106399 has 21 MA's), (7, 106420), (Start: 9 @106438 has 9 MA's), (13, 106486), (20, 106543), (24, 106600), (26, 106636), (28, 106642), (35, 106819),

Gene: Sauce_195 Start: 105189, Stop: 105656, Start Num: 3

Candidate Starts for Sauce_195:

(Start: 3 @105189 has 151 MA's), (Start: 6 @105213 has 21 MA's), (7, 105234), (Start: 9 @105252 has 9 MA's), (13, 105300), (20, 105357), (24, 105414), (26, 105450), (28, 105456), (35, 105633),

Gene: ScoobyDoobyDoo_180 Start: 99997, Stop: 100494, Start Num: 2

Candidate Starts for ScoobyDoobyDoo_180:

(Start: 2 @99997 has 2 MA's), (5, 100036), (Start: 6 @100039 has 21 MA's), (Start: 9 @100078 has 9 MA's), (18, 100156), (19, 100171), (28, 100276),

Gene: ScottMcG_193 Start: 105368, Stop: 105772, Start Num: 9

Candidate Starts for ScottMcG_193:

(Start: 3 @105305 has 151 MA's), (Start: 6 @105329 has 21 MA's), (7, 105350), (Start: 9 @105368 has 9 MA's), (13, 105416), (20, 105473), (24, 105530), (26, 105566), (28, 105572), (35, 105749),

Gene: Sebata_201 Start: 108007, Stop: 108474, Start Num: 3

Candidate Starts for Sebata_201:

(Start: 3 @108007 has 151 MA's), (Start: 6 @108031 has 21 MA's), (7, 108052), (Start: 9 @108070 has 9 MA's), (13, 108118), (20, 108175), (24, 108232), (26, 108268), (28, 108274), (35, 108451),

Gene: Shaqnato_191 Start: 105715, Stop: 106182, Start Num: 3

Candidate Starts for Shaqnato_191:

(Start: 3 @105715 has 151 MA's), (Start: 6 @105739 has 21 MA's), (7, 105760), (Start: 9 @105778 has 9 MA's), (13, 105826), (20, 105883), (24, 105940), (26, 105976), (28, 105982), (35, 106159),

Gene: Shelob_201 Start: 108455, Stop: 108922, Start Num: 3

Candidate Starts for Shelob_201:

(Start: 3 @108455 has 151 MA's), (Start: 6 @108479 has 21 MA's), (7, 108500), (Start: 9 @108518 has 9 MA's), (13, 108566), (20, 108623), (24, 108680), (26, 108716), (28, 108722), (35, 108899),

Gene: ShiaLabeouf_196 Start: 105180, Stop: 105647, Start Num: 3

Candidate Starts for ShiaLabeouf_196:

(Start: 3 @105180 has 151 MA's), (Start: 6 @105204 has 21 MA's), (7, 105225), (Start: 9 @105243 has 9 MA's), (13, 105291), (20, 105348), (24, 105405), (26, 105441), (28, 105447), (35, 105624),

Gene: Shnickers_197 Start: 105244, Stop: 105711, Start Num: 3

Candidate Starts for Shnickers_197:

(Start: 3 @105244 has 151 MA's), (Start: 6 @105268 has 21 MA's), (7, 105289), (Start: 9 @105307 has 9 MA's), (13, 105355), (20, 105412), (24, 105469), (26, 105505), (28, 105511), (35, 105688),

Gene: Shrimp_201 Start: 107301, Stop: 107768, Start Num: 3

Candidate Starts for Shrimp_201:

(Start: 3 @107301 has 151 MA's), (Start: 6 @107325 has 21 MA's), (7, 107346), (Start: 9 @107364 has 9 MA's), (13, 107412), (20, 107469), (24, 107526), (26, 107562), (28, 107568), (35, 107745),

Gene: SilverDipper_203 Start: 106793, Stop: 107260, Start Num: 3

Candidate Starts for SilverDipper_203:

(Start: 3 @106793 has 151 MA's), (Start: 6 @106817 has 21 MA's), (7, 106838), (Start: 9 @106856 has 9 MA's), (13, 106904), (20, 106961), (24, 107018), (26, 107054), (28, 107060), (35, 107237),

Gene: SmallFry_199 Start: 105338, Stop: 105805, Start Num: 3

Candidate Starts for SmallFry_199:

(Start: 3 @105338 has 151 MA's), (Start: 6 @105362 has 21 MA's), (7, 105383), (Start: 9 @105401 has 9 MA's), (13, 105449), (20, 105506), (24, 105563), (26, 105599), (28, 105605), (35, 105782),

Gene: SoilZilla_195 Start: 106224, Stop: 106667, Start Num: 6

Candidate Starts for SoilZilla_195:

(Start: 3 @106200 has 151 MA's), (Start: 6 @106224 has 21 MA's), (7, 106245), (Start: 9 @106263 has 9 MA's), (13, 106311), (20, 106368), (24, 106425), (26, 106461), (28, 106467), (35, 106644),

Gene: Spec_194 Start: 105592, Stop: 105996, Start Num: 9

Candidate Starts for Spec_194:

(Start: 3 @105529 has 151 MA's), (Start: 6 @105553 has 21 MA's), (7, 105574), (Start: 9 @105592 has 9 MA's), (13, 105640), (20, 105697), (24, 105754), (26, 105790), (28, 105796), (35, 105973),

Gene: Specks_203 Start: 107671, Stop: 108114, Start Num: 6

Candidate Starts for Specks_203:

(Start: 3 @107647 has 151 MA's), (Start: 6 @107671 has 21 MA's), (7, 107692), (Start: 9 @107710 has 9 MA's), (13, 107758), (20, 107815), (24, 107872), (26, 107908), (28, 107914), (35, 108091),

Gene: Sprinklers_197 Start: 105896, Stop: 106363, Start Num: 3

Candidate Starts for Sprinklers_197:

(Start: 3 @105896 has 151 MA's), (Start: 6 @105920 has 21 MA's), (7, 105941), (Start: 9 @105959 has 9 MA's), (13, 106007), (20, 106064), (24, 106121), (26, 106157), (28, 106163), (35, 106340),

Gene: Spud_194 Start: 105917, Stop: 106384, Start Num: 3

Candidate Starts for Spud_194:

(Start: 3 @105917 has 151 MA's), (Start: 6 @105941 has 21 MA's), (7, 105962), (Start: 9 @105980 has 9 MA's), (13, 106028), (20, 106085), (24, 106142), (26, 106178), (28, 106184), (35, 106361),

Gene: SrishMeg2525_197 Start: 107081, Stop: 107548, Start Num: 3

Candidate Starts for SrishMeg2525_197:

(Start: 3 @107081 has 151 MA's), (Start: 6 @107105 has 21 MA's), (7, 107126), (Start: 9 @107144 has 9 MA's), (13, 107192), (20, 107249), (24, 107306), (26, 107342), (28, 107348), (35, 107525),

Gene: StephanieG_196 Start: 107175, Stop: 107579, Start Num: 9

Candidate Starts for StephanieG_196:

(Start: 3 @107112 has 151 MA's), (Start: 6 @107136 has 21 MA's), (7, 107157), (Start: 9 @107175 has 9 MA's), (13, 107223), (20, 107280), (24, 107337), (26, 107373), (28, 107379), (35, 107556),

Gene: Stormageddon_68 Start: 65457, Stop: 65810, Start Num: 8

Candidate Starts for Stormageddon_68:

(Start: 8 @65457 has 2 MA's), (12, 65508), (16, 65538), (17, 65544), (22, 65592), (23, 65616), (30, 65679), (31, 65709), (32, 65718), (34, 65796),

Gene: Stubby_184 Start: 105957, Stop: 106424, Start Num: 3

Candidate Starts for Stubby_184:

(Start: 3 @105957 has 151 MA's), (Start: 6 @105981 has 21 MA's), (7, 106002), (Start: 9 @106020 has 9 MA's), (13, 106068), (20, 106125), (24, 106182), (26, 106218), (28, 106224), (35, 106401),

Gene: StubbySaigey_204 Start: 106327, Stop: 106794, Start Num: 3
Candidate Starts for StubbySaigey_204:
(Start: 3 @106327 has 151 MA's), (Start: 6 @106351 has 21 MA's), (7, 106372), (Start: 9 @106390 has 9 MA's), (13, 106438), (20, 106495), (24, 106552), (26, 106588), (28, 106594), (35, 106771),

Gene: Substance289_196 Start: 105449, Stop: 105853, Start Num: 9
Candidate Starts for Substance289_196:
(Start: 3 @105386 has 151 MA's), (Start: 6 @105410 has 21 MA's), (7, 105431), (Start: 9 @105449 has 9 MA's), (13, 105497), (20, 105554), (24, 105611), (26, 105647), (28, 105653), (35, 105830),

Gene: Tainan_200 Start: 106691, Stop: 107134, Start Num: 6
Candidate Starts for Tainan_200:
(Start: 3 @106667 has 151 MA's), (Start: 6 @106691 has 21 MA's), (7, 106712), (Start: 9 @106730 has 9 MA's), (13, 106778), (20, 106835), (24, 106892), (26, 106928), (28, 106934), (35, 107111),

Gene: Teardrop_196 Start: 104866, Stop: 105309, Start Num: 6
Candidate Starts for Teardrop_196:
(Start: 3 @104842 has 151 MA's), (Start: 6 @104866 has 21 MA's), (7, 104887), (Start: 9 @104905 has 9 MA's), (13, 104953), (20, 105010), (24, 105067), (26, 105103), (28, 105109), (35, 105286),

Gene: TinyTim_198 Start: 105930, Stop: 106397, Start Num: 3
Candidate Starts for TinyTim_198:
(Start: 3 @105930 has 151 MA's), (Start: 6 @105954 has 21 MA's), (7, 105975), (Start: 9 @105993 has 9 MA's), (13, 106041), (20, 106098), (24, 106155), (26, 106191), (28, 106197), (35, 106374),

Gene: Tonenili_220 Start: 112224, Stop: 112682, Start Num: 3
Candidate Starts for Tonenili_220:
(Start: 3 @112224 has 151 MA's), (Start: 6 @112248 has 21 MA's), (7, 112269), (Start: 9 @112287 has 9 MA's), (13, 112335), (15, 112350), (24, 112449), (28, 112491),

Gene: Tortoise16_197 Start: 106083, Stop: 106550, Start Num: 3
Candidate Starts for Tortoise16_197:
(Start: 3 @106083 has 151 MA's), (Start: 6 @106107 has 21 MA's), (7, 106128), (Start: 9 @106146 has 9 MA's), (13, 106194), (20, 106251), (24, 106308), (26, 106344), (28, 106350), (35, 106527),

Gene: Trinitium_196 Start: 105677, Stop: 106144, Start Num: 3
Candidate Starts for Trinitium_196:
(Start: 3 @105677 has 151 MA's), (Start: 6 @105701 has 21 MA's), (7, 105722), (Start: 9 @105740 has 9 MA's), (13, 105788), (20, 105845), (24, 105902), (26, 105938), (28, 105944), (35, 106121),

Gene: Turret_193 Start: 105283, Stop: 105726, Start Num: 6
Candidate Starts for Turret_193:
(Start: 3 @105259 has 151 MA's), (Start: 6 @105283 has 21 MA's), (7, 105304), (Start: 9 @105322 has 9 MA's), (13, 105370), (20, 105427), (24, 105484), (26, 105520), (28, 105526), (35, 105703),

Gene: Tyke_197 Start: 107474, Stop: 107917, Start Num: 6
Candidate Starts for Tyke_197:
(Start: 3 @107450 has 151 MA's), (Start: 6 @107474 has 21 MA's), (7, 107495), (Start: 9 @107513 has 9 MA's), (13, 107561), (20, 107618), (24, 107675), (26, 107711), (28, 107717), (35, 107894),

Gene: ValleyTerrace_200 Start: 105534, Stop: 106001, Start Num: 3
Candidate Starts for ValleyTerrace_200:

(Start: 3 @105534 has 151 MA's), (Start: 6 @105558 has 21 MA's), (7, 105579), (Start: 9 @105597 has 9 MA's), (13, 105645), (20, 105702), (24, 105759), (26, 105795), (28, 105801), (35, 105978),

Gene: Vortrix_218 Start: 111074, Stop: 111469, Start Num: 9

Candidate Starts for Vortrix_218:

(Start: 3 @111011 has 151 MA's), (Start: 6 @111035 has 21 MA's), (7, 111056), (Start: 9 @111074 has 9 MA's), (13, 111122), (15, 111137), (24, 111236), (28, 111278),

Gene: Wally_198 Start: 105827, Stop: 106294, Start Num: 3

Candidate Starts for Wally_198:

(Start: 3 @105827 has 151 MA's), (Start: 6 @105851 has 21 MA's), (7, 105872), (Start: 9 @105890 has 9 MA's), (13, 105938), (20, 105995), (24, 106052), (26, 106088), (28, 106094), (35, 106271),

Gene: Willis_200 Start: 106741, Stop: 107208, Start Num: 3

Candidate Starts for Willis_200:

(Start: 3 @106741 has 151 MA's), (Start: 6 @106765 has 21 MA's), (7, 106786), (Start: 9 @106804 has 9 MA's), (13, 106852), (20, 106909), (24, 106966), (26, 107002), (28, 107008), (35, 107185),

Gene: Yassified_196 Start: 105897, Stop: 106340, Start Num: 6

Candidate Starts for Yassified_196:

(Start: 3 @105873 has 151 MA's), (Start: 6 @105897 has 21 MA's), (7, 105918), (Start: 9 @105936 has 9 MA's), (13, 105984), (20, 106041), (24, 106098), (26, 106134), (28, 106140), (35, 106317),

Gene: YemiJoy2021_200 Start: 107497, Stop: 107964, Start Num: 3

Candidate Starts for YemiJoy2021_200:

(Start: 3 @107497 has 151 MA's), (Start: 6 @107521 has 21 MA's), (7, 107542), (Start: 9 @107560 has 9 MA's), (13, 107608), (20, 107665), (24, 107722), (26, 107758), (28, 107764), (35, 107941),

Gene: YoungMoneyMata_198 Start: 106039, Stop: 106506, Start Num: 3

Candidate Starts for YoungMoneyMata_198:

(Start: 3 @106039 has 151 MA's), (Start: 6 @106063 has 21 MA's), (7, 106084), (Start: 9 @106102 has 9 MA's), (13, 106150), (20, 106207), (24, 106264), (26, 106300), (28, 106306), (35, 106483),

Gene: Yucca_200 Start: 107489, Stop: 107956, Start Num: 3

Candidate Starts for Yucca_200:

(Start: 3 @107489 has 151 MA's), (Start: 6 @107513 has 21 MA's), (7, 107534), (Start: 9 @107552 has 9 MA's), (13, 107600), (20, 107657), (24, 107714), (26, 107750), (28, 107756), (35, 107933),

Gene: Zalkecks_199 Start: 106570, Stop: 107037, Start Num: 3

Candidate Starts for Zalkecks_199:

(Start: 3 @106570 has 151 MA's), (Start: 6 @106594 has 21 MA's), (7, 106615), (Start: 9 @106633 has 9 MA's), (13, 106681), (20, 106738), (24, 106795), (26, 106831), (28, 106837), (35, 107014),

Gene: Zeenon_202 Start: 107204, Stop: 107608, Start Num: 9

Candidate Starts for Zeenon_202:

(Start: 3 @107141 has 151 MA's), (Start: 6 @107165 has 21 MA's), (7, 107186), (Start: 9 @107204 has 9 MA's), (13, 107252), (20, 107309), (24, 107366), (26, 107402), (28, 107408), (35, 107585),

Gene: ZygoTaiga_196 Start: 107761, Stop: 108228, Start Num: 3

Candidate Starts for ZygoTaiga_196:

(Start: 3 @107761 has 151 MA's), (Start: 6 @107785 has 21 MA's), (7, 107806), (Start: 9 @107824 has 9 MA's), (13, 107872), (20, 107929), (24, 107986), (26, 108022), (28, 108028), (35, 108205),