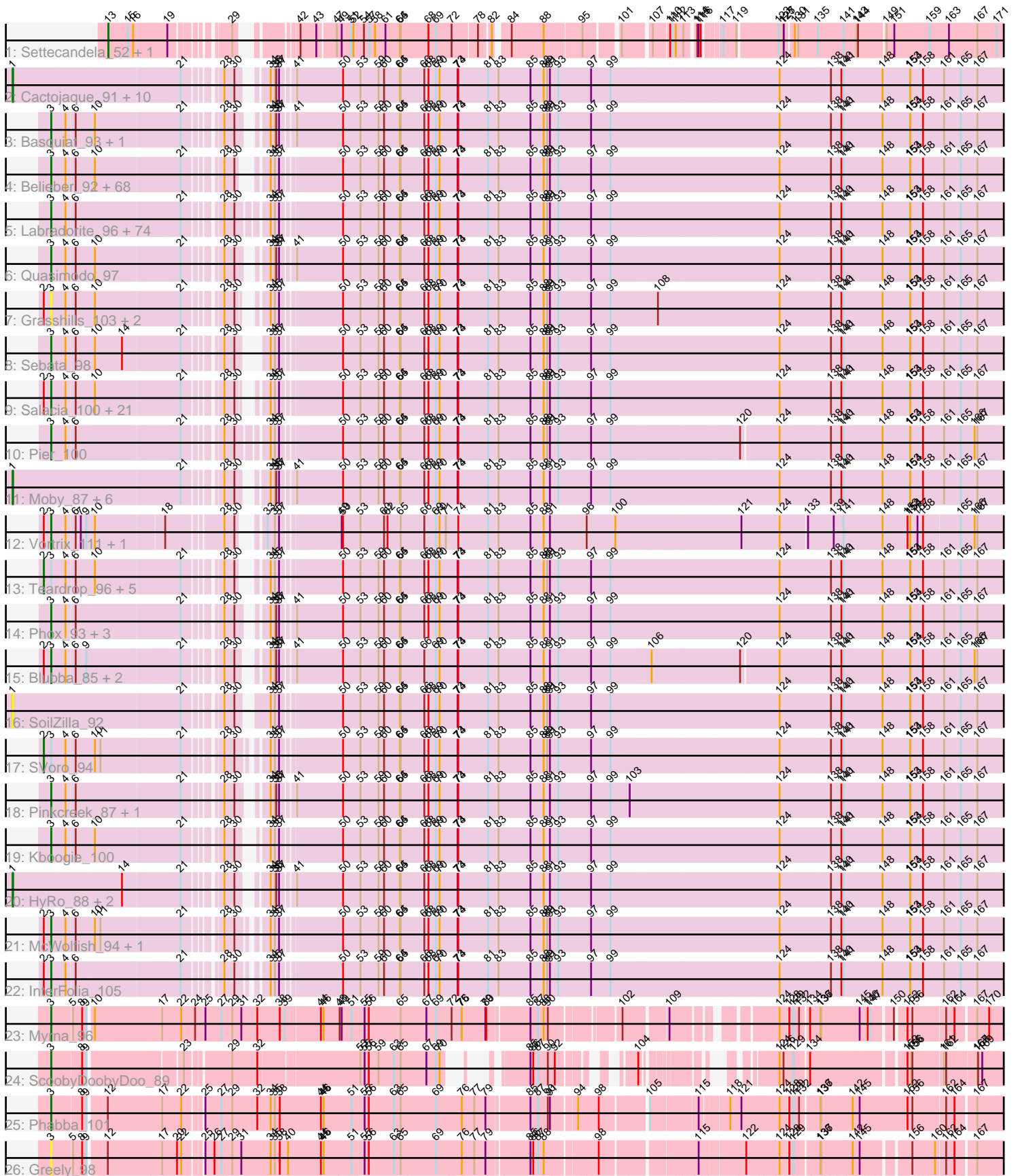


Pham 308054



Note: Tracks are now grouped by subcluster and scaled. Switching in subcluster is indicated by changes in track color. Track scale is now set by default to display the region 30 bp upstream of start 1 to 30 bp downstream of the last possible start. If this default region is judged to be packed too tightly with annotated starts, the track will be further scaled to only show that region of the ORF with annotated starts. This action will be indicated by adding "Zoomed" to the title. For starts, yellow indicates the location of called starts comprised solely of Glimmer/GeneMark auto-annotations, green indicates the location of called starts with at least 1 manual gene annotation.

Pham 308054 Report

This analysis was run 06/27/26 on database version 652.

Pham number 308054 has 224 members, 38 are drafts.

Phages represented in each track:

- Track 1 : Settecandela_52, Phrappuccino_52
- Track 2 : Cactojaque_91, Flabslab_91, ChaylaJr_91, ErnieJ_92, Melpomini_90, Rabinovish_93, Turret_91, Blackbrain_91, Janiyra_98, EasyJones_99, ChickenPhender_92
- Track 3 : Basquiat_93, Chargie21_93
- Track 4 : Belieber_92, Atlantean_96, JPickles_95, StubbySaigey_99, CindyLou_98, Naija_96, Ngannou_93, Shnickers_97, LifeSavor_96, ValleyTerrace_97, Fixie_93, Halldule_90, Audrick_99, McGee_98, Sauce_97, Babyland_97, Amataga_97, Guwapp_96, Essence_94, InigoMontoya_98, ArcherS7_96, Blackdragon_92, Lunareta_95, LRRHood_91, Ronan_90, JulietS_90, Derek_97, Cali_92, Jemmno_97, BobaPhatt_92, Nappy_99, Ablatia_95, Jedediah_100, EmmaElysia_96, Yassified_93, Iota_91, Pupusa_103, Rahel_96, Ading_97, Spec_93, Chomp_96, JustHall_93, Pivoine_96, Grungle_84, Momo_96, Trinitium_93, Jaygup_97, GlutenPhree_98, Ghost_96, Shaqnato_89, Gamgam_97, Koguma_93, Phlegm_99, SmallFry_97, Patter_97, DirtMonster_90, CharlieB_92, Duckfeet_89, YoungMoneyMata_97, Adlitam_97, JigglyPuff_104, Montpel_95, Sprinklers_92, Substance289_95, Bangla1971_98, SilverDipper_98, Fludd_97, Phusco_97, Latch_97
- Track 5 : Labradorite_96, Roots515_95, FrayBell_102, Loanshark_96, BananaFence_95, Lethe_95, Caravan_91, BeanWater_88, Tainan_101, LolaVinca_98, Napoleon13_92, Khaleesi_95, Megamind_95, Primadonna_90, MikeLiesIn_97, Ewok_97, Bowman_94, FoxtrotP1_96, ShiaLabeouf_96, TinyTim_96, BadAgartude_93, Naval22_104, Zalkecks_97, Kamryn_96, EmToTheThree_99, Domi_90, YemiJoy2021_97, ET08_85, Delylah_99, Gizmo_100, OrediggerDelux_94, Bonray_96, NedWong_97, Willis_97, Darko_96, Lee7_94, Wally_95, QBert_90, Rocha_95, Asterius_99, Delilah_96, Bipolarisk_95, Pio_100, Zeenon_98, Drazdys_96, Mangeria_96, Norm_97, LordLeafolot_102, Ava3_97, Jessibeth14_95, StephanieG_95, Yucca_96, Cleatunium_91, ZygoTaiga_95, Capablanca_98, Matsumoto_95, Pleione_99, Shelob_98, Daffodil_101, Fongie_94, PharkleMinkus_101, Issimir_95, MoMoMixon_97, Lukilu_87, ParkTD_97, Gabriel_98, Dessert_94, SrishMeg2525_95, Bxz1_94, Shrimp_96, Littleton_96, Erdmann_97, FudgeTart_96, Burrough_96, Rizal_93
- Track 6 : Quasimodo_97
- Track 7 : Grasshills_103, EggyFarm_104, BigCity_104
- Track 8 : Sebata_98
- Track 9 : Salacia_100, Mikro_94, Concombre_103, Bigswole_101, IkeLoa_90, LinStu_96, I3_102, DTDevon_97, NoodleTree_104, Dandelion_103, Demodog_103, DrPhinkDaddy_95, Specks_102, Tyke_98, JayJay_102, LookingGlass_97,

- Izajani_96, NuevoMundo_102, Maturis_94, Maby2021_96, Bread_96, Jezreel_96
- Track 10 : Pier_100
 - Track 11 : Moby_87, BackyardAgain_93, Dietrick_88, Morizzled23_96, ScottMcG_93, Catera_93, Moiqah_87
 - Track 12 : Vortrix_111, Tonenili_110
 - Track 13 : Teardrop_96, Nidhogg_97, Tortoise16_94, Astraea_94, RoMag_91, Breeniome_96
 - Track 14 : Phox_93, Bezza_85, Alice_89, Spud_96
 - Track 15 : Blubba_85, Colt_86, Cane17_85
 - Track 16 : SoilZilla_92
 - Track 17 : SVoro_94
 - Track 18 : Pinkcreek_87, Stubby_89
 - Track 19 : Kboogie_100
 - Track 20 : HyRo_88, Shifa_85, DeejaClivia_85
 - Track 21 : McWolfish_94, PurduePete_96
 - Track 22 : InterFolia_105
 - Track 23 : Myrna_96
 - Track 24 : ScoobyDoobyDoo_89
 - Track 25 : Phabba_101
 - Track 26 : Greely_98

Summary of Final Annotations (See graph section above for start numbers):

The start number called the most often in the published annotations is 3, it was called in 159 of the 186 non-draft genes in the pham.

Genes that call this "Most Annotated" start:

- Ablatia_95, Ading_97, Adlitam_97, Alice_89, Amataga_97, ArcherS7_96, Asterius_99, Atlantean_96, Audrick_99, Ava3_97, Babyland_97, BadAgartude_93, BananaFence_95, Bangla1971_98, Basquiat_93, BeanWater_88, Belieber_92, Bezza_85, BigCity_104, Bigswole_101, Bipolarisk_95, Blackdragon_92, Blubba_85, BobaPhatt_92, Bonray_96, Bowman_94, Bread_96, Burrough_96, Bxz1_94, Cali_92, Cane17_85, Capablanca_98, Caravan_91, Chargie21_93, CharlieB_92, Chomp_96, CindyLou_98, Cleatunium_91, Colt_86, Concombre_103, DTDevon_97, Daffodil_101, Dandelion_103, Darko_96, Delilah_96, Delylah_99, Demodog_103, Derek_97, Dessert_94, DirtMonster_90, Domi_90, DrPhinkDaddy_95, Drazdys_96, Duckfeet_89, ET08_85, EggyFarm_104, EmToTheThree_99, EmmaElysia_96, Erdmann_97, Essence_94, Ewok_97, Fixie_93, Fludd_97, Fongie_94, FoxtrotP1_96, FrayBell_102, FudgeTart_96, Gabriel_98, Gamgam_97, Ghost_96, Gizmo_100, GlutenPhree_98, Grasshills_103, Greely_98, Grungle_84, Guwapp_96, Halldule_90, I3_102, IkeLoa_90, InigoMontoya_98, InterFolia_105, Iota_91, Issimir_95, Izajani_96, JPickles_95, JayJay_102, Jaygup_97, Jedediah_100, Jemmno_97, Jessibeth14_95, Jezreel_96, JigglyPuff_104, JulietS_90, JustHall_93, Kamryn_96, Kboogie_100, Khaleesi_95, Koguma_93, LRRHood_91, Labradorite_96, Latch_97, Lee7_94, Lethe_95, LifeSavor_96, LinStu_96, Littleton_96, Loanshark_96, LolaVinca_98, LookingGlass_97, LordLeafolot_102, Lukilu_87, Lunareta_95, Maby2021_96, Mangeria_96, Matsumoto_95, Maturis_94, McGee_98, McWolfish_94, Megamind_95, MikeLiesIn_97, Mikro_94, MoMoMixon_97, Momo_96, Montpel_95, Myrna_96, Naija_96, Napoleon13_92, Nappy_99, Naval22_104, NedWong_97, Ngannou_93, NoodleTree_104, Norm_97, NuevoMundo_102, OrediggerDelux_94, ParkTD_97,

Patter_97, Phabba_101, PharkleMinkus_101, Phlegm_99, Phox_93, Phusco_97, Pier_100, Pinkcreek_87, Pio_100, Pivoine_96, Pleione_99, Primadonna_90, Pupusa_103, PurduePete_96, QBert_90, Quasimodo_97, Rahel_96, Rizal_93, Rocha_95, Ronan_90, Roots515_95, Salacia_100, Sauce_97, ScoobyDoobyDoo_89, Sebata_98, Shaqnato_89, Shelob_98, ShiaLabeouf_96, Shnickers_97, Shrimp_96, SilverDipper_98, SmallFry_97, Spec_93, Specks_102, Sprinklers_92, Spud_96, SrishMeg2525_95, StephanieG_95, StubbySaigey_99, Stubby_89, Substance289_95, Tainan_101, TinyTim_96, Tonenili_110, Trinitium_93, Tyke_98, ValleyTerrace_97, Vortrix_111, Wally_95, Willis_97, Yassified_93, YemiJoy2021_97, YoungMoneyMata_97, Yucca_96, Zalkecks_97, Zeenon_98, ZygoTaiga_95,

Genes that have the "Most Annotated" start but do not call it:

- Astraea_94, Breeniome_96, Nidhogg_97, RoMag_91, SVoro_94, Teardrop_96, Tortoise16_94,

Genes that do not have the "Most Annotated" start:

- BackyardAgain_93, Blackbrain_91, Cactojaque_91, Catera_93, ChaylaJr_91, ChickenPhender_92, DeejaClivia_85, Dietrick_88, EasyJones_99, ErnieJ_92, Flabslab_91, HyRo_88, Janiyra_98, Melpomini_90, Moby_87, Moiqah_87, Morizzled23_96, Phrappuccino_52, Rabinovish_93, ScottMcG_93, Settecandela_52, Shifa_85, SoilZilla_92, Turret_91,

Summary by start number:

Start 1:

- Found in 22 of 224 (9.8%) of genes in pham
- Manual Annotations of this start: 18 of 186
- Called 100.0% of time when present
- Phage (with cluster) where this start called: BackyardAgain_93 (C1), Blackbrain_91 (C1), Cactojaque_91 (C1), Catera_93 (C1), ChaylaJr_91 (C1), ChickenPhender_92 (C1), DeejaClivia_85 (C1), Dietrick_88 (C1), EasyJones_99 (C1), ErnieJ_92 (C1), Flabslab_91 (C1), HyRo_88 (C1), Janiyra_98 (C1), Melpomini_90 (C1), Moby_87 (C1), Moiqah_87 (C1), Morizzled23_96 (C1), Rabinovish_93 (C1), ScottMcG_93 (C1), Shifa_85 (C1), SoilZilla_92 (C1), Turret_91 (C1),

Start 2:

- Found in 40 of 224 (17.9%) of genes in pham
- Manual Annotations of this start: 7 of 186
- Called 17.5% of time when present
- Phage (with cluster) where this start called: Astraea_94 (C1), Breeniome_96 (C1), Nidhogg_97 (C1), RoMag_91 (C1), SVoro_94 (C1), Teardrop_96 (C1), Tortoise16_94 (C1),

Start 3:

- Found in 200 of 224 (89.3%) of genes in pham
- Manual Annotations of this start: 159 of 186
- Called 96.5% of time when present
- Phage (with cluster) where this start called: Ablatia_95 (C1), Ading_97 (C1), Adlitam_97 (C1), Alice_89 (C1), Amataga_97 (C1), ArcherS7_96 (C1), Asterius_99 (C1), Atlantean_96 (C1), Audrick_99 (C1), Ava3_97 (C1), Babyland_97 (C1), BadAgartude_93 (C1), BananaFence_95 (C1), Bangla1971_98 (C1), Basquiat_93 (C1), BeanWater_88 (C1), Belieber_92 (C1), Bezza_85 (C1), BigCity_104 (C1), Bigswole_101 (C1), Bipolarisk_95 (C1), Blackdragon_92 (C1), Blubba_85 (C1),

BobaPhatt_92 (C1), Bonray_96 (C1), Bowman_94 (C1), Bread_96 (C1), Burrough_96 (C1), Bxz1_94 (C1), Cali_92 (C1), Cane17_85 (C1), Capablanca_98 (C1), Caravan_91 (C1), Charge21_93 (C1), CharlieB_92 (C1), Chomp_96 (C1), CindyLou_98 (C1), Cleatunium_91 (C1), Colt_86 (C1), Concombre_103 (C1), DTDevon_97 (C1), Daffodil_101 (C1), Dandelion_103 (C1), Darko_96 (C1), Delilah_96 (C1), Delylah_99 (C1), Demodog_103 (C1), Derek_97 (C1), Dessert_94 (C1), DirtMonster_90 (C1), Domi_90 (C1), DrPhinkDaddy_95 (C1), Drazdys_96 (C1), Duckfeet_89 (C1), ET08_85 (C1), EggyFarm_104 (C1), EmToTheThree_99 (C1), EmmaElysia_96 (C1), Erdmann_97 (C1), Essence_94 (C1), Ewok_97 (C1), Fixie_93 (C1), Fludd_97 (C1), Fongie_94 (C1), FoxtrotP1_96 (C1), FrayBell_102 (C1), FudgeTart_96 (C1), Gabriel_98 (C1), Gamgam_97 (C1), Ghost_96 (C1), Gizmo_100 (C1), GlutenPhree_98 (C1), Grasshills_103 (C1), Greely_98 (C2), Grungle_84 (C1), Guwapp_96 (C1), Halldule_90 (C1), I3_102 (C1), IkeLoa_90 (C1), InigoMontoya_98 (C1), InterFolia_105 (C1), Iota_91 (C1), Issimir_95 (C1), Izajani_96 (C1), JPickles_95 (C1), JayJay_102 (C1), Jaygup_97 (C1), Jedediah_100 (C1), Jemmno_97 (C1), Jessibeth14_95 (C1), Jezreel_96 (C1), JigglyPuff_104 (C1), JulietS_90 (C1), JustHall_93 (C1), Kamryn_96 (C1), Kboogie_100 (C1), Khaleesi_95 (C1), Koguma_93 (C1), LRRHood_91 (C1), Labradorite_96 (C1), Latch_97 (C1), Lee7_94 (C1), Lethe_95 (C1), LifeSavor_96 (C1), LinStu_96 (C1), Littleton_96 (C1), Loanshark_96 (C1), LolaVinca_98 (C1), LookingGlass_97 (C1), LordLeafolot_102 (C1), Lukilu_87 (C1), Lunareta_95 (C1), Maby2021_96 (C1), Mangeria_96 (C1), Matsumoto_95 (C1), Maturis_94 (C1), McGee_98 (C1), McWolfish_94 (C1), Megamind_95 (C1), MikeLiesIn_97 (C1), Mikro_94 (C1), MoMoMixon_97 (C1), Momo_96 (C1), Montpel_95 (C1), Myrna_96 (C2), Naija_96 (C1), Napoleon13_92 (C1), Nappy_99 (C1), Naval22_104 (C1), NedWong_97 (C1), Ngannou_93 (C1), NoodleTree_104 (C1), Norm_97 (C1), NuevoMundo_102 (C1), OrediggerDelux_94 (C1), ParkTD_97 (C1), Patter_97 (C1), Phabba_101 (C2), PharkleMinkus_101 (C1), Phlegm_99 (C1), Phox_93 (C1), Phusco_97 (C1), Pier_100 (C1), Pinkcreek_87 (C1), Pio_100 (C1), Pivoine_96 (C1), Pleione_99 (C1), Primadonna_90 (C1), Pupusa_103 (C1), PurduePete_96 (C1), QBert_90 (C1), Quasimodo_97 (C1), Rahel_96 (C1), Rizal_93 (C1), Rocha_95 (C1), Ronan_90 (C1), Roots515_95 (C1), Salacia_100 (C1), Sauce_97 (C1), ScoobyDoobyDoo_89 (C2), Sebata_98 (C1), Shaqnato_89 (C1), Shelob_98 (C1), ShiaLabeouf_96 (C1), Shnickers_97 (C1), Shrimp_96 (C1), SilverDipper_98 (C1), SmallFry_97 (C1), Spec_93 (C1), Specks_102 (C1), Sprinklers_92 (C1), Spud_96 (C1), SrishMeg2525_95 (C1), StephanieG_95 (C1), StubbySaigey_99 (C1), Stubby_89 (C1), Substance289_95 (C1), Tainan_101 (C1), TinyTim_96 (C1), Tonenili_110 (C1), Trinitium_93 (C1), Tyke_98 (C1), ValleyTerrace_97 (C1), Vortrix_111 (C1), Wally_95 (C1), Willis_97 (C1), Yassified_93 (C1), YemiJoy2021_97 (C1), YoungMoneyMata_97 (C1), Yucca_96 (C1), Zalkecks_97 (C1), Zeenon_98 (C1), ZygoTaiga_95 (C1),

Start 13:

- Found in 2 of 224 (0.9%) of genes in pham
- Manual Annotations of this start: 2 of 186
- Called 100.0% of time when present
- Phage (with cluster) where this start called: Phrappuccino_52 (AA), Settecandela_52 (AA),

Summary by clusters:

There are 3 clusters represented in this pham: AA, C2, C1,

Info for manual annotations of cluster AA:

- Start number 13 was manually annotated 2 times for cluster AA.

Info for manual annotations of cluster C1:

- Start number 1 was manually annotated 18 times for cluster C1.
- Start number 2 was manually annotated 7 times for cluster C1.
- Start number 3 was manually annotated 156 times for cluster C1.

Info for manual annotations of cluster C2:

- Start number 3 was manually annotated 3 times for cluster C2.

Gene Information:

Gene: Ablatia_95 Start: 40116, Stop: 43916, Start Num: 3

Candidate Starts for Ablatia_95:

(Start: 3 @40116 has 159 MA's), (4, 40170), (6, 40200), (10, 40269), (21, 40620), (28, 40734), (30, 40776), (34, 40833), (35, 40851), (37, 40869), (50, 41088), (53, 41160), (59, 41238), (60, 41262), (64, 41331), (65, 41334), (66, 41436), (68, 41454), (69, 41487), (70, 41502), (73, 41580), (74, 41583), (81, 41712), (83, 41757), (85, 41892), (88, 41949), (89, 41964), (91, 41976), (93, 42009), (97, 42150), (99, 42234), (124, 42936), (138, 43152), (140, 43194), (141, 43203), (148, 43371), (153, 43488), (154, 43491), (158, 43542), (161, 43629), (165, 43701), (167, 43770),

Gene: Ading_97 Start: 41385, Stop: 45185, Start Num: 3

Candidate Starts for Ading_97:

(Start: 3 @41385 has 159 MA's), (4, 41439), (6, 41469), (10, 41538), (21, 41889), (28, 42003), (30, 42045), (34, 42102), (35, 42120), (37, 42138), (50, 42357), (53, 42429), (59, 42507), (60, 42531), (64, 42600), (65, 42603), (66, 42705), (68, 42723), (69, 42756), (70, 42771), (73, 42849), (74, 42852), (81, 42981), (83, 43026), (85, 43161), (88, 43218), (89, 43233), (91, 43245), (93, 43278), (97, 43419), (99, 43503), (124, 44205), (138, 44421), (140, 44463), (141, 44472), (148, 44640), (153, 44757), (154, 44760), (158, 44811), (161, 44898), (165, 44970), (167, 45039),

Gene: Adlitam_97 Start: 41402, Stop: 45202, Start Num: 3

Candidate Starts for Adlitam_97:

(Start: 3 @41402 has 159 MA's), (4, 41456), (6, 41486), (10, 41555), (21, 41906), (28, 42020), (30, 42062), (34, 42119), (35, 42137), (37, 42155), (50, 42374), (53, 42446), (59, 42524), (60, 42548), (64, 42617), (65, 42620), (66, 42722), (68, 42740), (69, 42773), (70, 42788), (73, 42866), (74, 42869), (81, 42998), (83, 43043), (85, 43178), (88, 43235), (89, 43250), (91, 43262), (93, 43295), (97, 43436), (99, 43520), (124, 44222), (138, 44438), (140, 44480), (141, 44489), (148, 44657), (153, 44774), (154, 44777), (158, 44828), (161, 44915), (165, 44987), (167, 45056),

Gene: Alice_89 Start: 38827, Stop: 42642, Start Num: 3

Candidate Starts for Alice_89:

(Start: 3 @38827 has 159 MA's), (4, 38881), (6, 38911), (21, 39331), (28, 39445), (30, 39487), (34, 39562), (35, 39580), (36, 39586), (37, 39598), (41, 39637), (50, 39814), (53, 39886), (59, 39964), (60, 39988), (64, 40057), (65, 40060), (66, 40162), (68, 40180), (69, 40213), (70, 40228), (73, 40306), (74, 40309), (81, 40438), (83, 40483), (85, 40618), (88, 40675), (91, 40702), (93, 40735), (97, 40876), (99, 40960), (124, 41662), (138, 41878), (140, 41920), (141, 41929), (148, 42097), (153, 42214), (154, 42217), (158, 42268), (161, 42355), (165, 42427), (167, 42496),

Gene: Amataga_97 Start: 40647, Stop: 44447, Start Num: 3

Candidate Starts for Amataga_97:

(Start: 3 @40647 has 159 MA's), (4, 40701), (6, 40731), (10, 40800), (21, 41151), (28, 41265), (30, 41307), (34, 41364), (35, 41382), (37, 41400), (50, 41619), (53, 41691), (59, 41769), (60, 41793), (64, 41862), (65, 41865), (66, 41967), (68, 41985), (69, 42018), (70, 42033), (73, 42111), (74, 42114), (81, 42243), (83, 42288), (85, 42423), (88, 42480), (89, 42495), (91, 42507), (93, 42540), (97, 42681), (99, 42765), (124, 43467), (138, 43683), (140, 43725), (141, 43734), (148, 43902), (153, 44019), (154, 44022), (158, 44073), (161, 44160), (165, 44232), (167, 44301),

Gene: ArcherS7_96 Start: 40965, Stop: 44765, Start Num: 3

Candidate Starts for ArcherS7_96:

(Start: 3 @40965 has 159 MA's), (4, 41019), (6, 41049), (10, 41118), (21, 41469), (28, 41583), (30, 41625), (34, 41682), (35, 41700), (37, 41718), (50, 41937), (53, 42009), (59, 42087), (60, 42111), (64, 42180), (65, 42183), (66, 42285), (68, 42303), (69, 42336), (70, 42351), (73, 42429), (74, 42432), (81, 42561), (83, 42606), (85, 42741), (88, 42798), (89, 42813), (91, 42825), (93, 42858), (97, 42999), (99, 43083), (124, 43785), (138, 44001), (140, 44043), (141, 44052), (148, 44220), (153, 44337), (154, 44340), (158, 44391), (161, 44478), (165, 44550), (167, 44619),

Gene: Asterius_99 Start: 40513, Stop: 44343, Start Num: 3

Candidate Starts for Asterius_99:

(Start: 3 @40513 has 159 MA's), (4, 40567), (6, 40597), (21, 41017), (28, 41131), (30, 41173), (34, 41260), (35, 41278), (37, 41296), (50, 41515), (53, 41587), (59, 41665), (60, 41689), (64, 41758), (65, 41761), (66, 41863), (68, 41881), (69, 41914), (70, 41929), (73, 42007), (74, 42010), (81, 42139), (83, 42184), (85, 42319), (88, 42376), (89, 42391), (91, 42403), (93, 42436), (97, 42577), (99, 42661), (124, 43363), (138, 43579), (140, 43621), (141, 43630), (148, 43798), (153, 43915), (154, 43918), (158, 43969), (161, 44056), (165, 44128), (167, 44197),

Gene: Astraea_94 Start: 40359, Stop: 44216, Start Num: 2

Candidate Starts for Astraea_94:

(Start: 2 @40359 has 7 MA's), (Start: 3 @40386 has 159 MA's), (4, 40440), (6, 40470), (10, 40539), (21, 40890), (28, 41004), (30, 41046), (34, 41133), (35, 41151), (37, 41169), (50, 41388), (53, 41460), (59, 41538), (60, 41562), (64, 41631), (65, 41634), (66, 41736), (68, 41754), (69, 41787), (70, 41802), (73, 41880), (74, 41883), (81, 42012), (83, 42057), (85, 42192), (88, 42249), (89, 42264), (91, 42276), (93, 42309), (97, 42450), (99, 42534), (124, 43236), (138, 43452), (140, 43494), (141, 43503), (148, 43671), (153, 43788), (154, 43791), (158, 43842), (161, 43929), (165, 44001), (167, 44070),

Gene: Atlantean_96 Start: 40647, Stop: 44447, Start Num: 3

Candidate Starts for Atlantean_96:

(Start: 3 @40647 has 159 MA's), (4, 40701), (6, 40731), (10, 40800), (21, 41151), (28, 41265), (30, 41307), (34, 41364), (35, 41382), (37, 41400), (50, 41619), (53, 41691), (59, 41769), (60, 41793), (64, 41862), (65, 41865), (66, 41967), (68, 41985), (69, 42018), (70, 42033), (73, 42111), (74, 42114), (81, 42243), (83, 42288), (85, 42423), (88, 42480), (89, 42495), (91, 42507), (93, 42540), (97, 42681), (99, 42765), (124, 43467), (138, 43683), (140, 43725), (141, 43734), (148, 43902), (153, 44019), (154, 44022), (158, 44073), (161, 44160), (165, 44232), (167, 44301),

Gene: Audrick_99 Start: 40626, Stop: 44426, Start Num: 3

Candidate Starts for Audrick_99:

(Start: 3 @40626 has 159 MA's), (4, 40680), (6, 40710), (10, 40779), (21, 41130), (28, 41244), (30, 41286), (34, 41343), (35, 41361), (37, 41379), (50, 41598), (53, 41670), (59, 41748), (60, 41772), (64, 41841), (65, 41844), (66, 41946), (68, 41964), (69, 41997), (70, 42012), (73, 42090), (74, 42093), (81, 42222), (83, 42267), (85, 42402), (88, 42459), (89, 42474), (91, 42486), (93, 42519), (97, 42660), (99, 42744), (124, 43446), (138, 43662), (140, 43704), (141, 43713), (148, 43881), (153, 43998), (154, 44001), (158, 44052), (161, 44139), (165, 44211), (167, 44280),

Gene: Ava3_97 Start: 40886, Stop: 44716, Start Num: 3

Candidate Starts for Ava3_97:

(Start: 3 @40886 has 159 MA's), (4, 40940), (6, 40970), (21, 41390), (28, 41504), (30, 41546), (34, 41633), (35, 41651), (37, 41669), (50, 41888), (53, 41960), (59, 42038), (60, 42062), (64, 42131), (65, 42134), (66, 42236), (68, 42254), (69, 42287), (70, 42302), (73, 42380), (74, 42383), (81, 42512), (83, 42557), (85, 42692), (88, 42749), (89, 42764), (91, 42776), (93, 42809), (97, 42950), (99, 43034), (124, 43736), (138, 43952), (140, 43994), (141, 44003), (148, 44171), (153, 44288), (154, 44291), (158, 44342), (161, 44429), (165, 44501), (167, 44570),

Gene: Babyland_97 Start: 40086, Stop: 43886, Start Num: 3

Candidate Starts for Babyland_97:

(Start: 3 @40086 has 159 MA's), (4, 40140), (6, 40170), (10, 40239), (21, 40590), (28, 40704), (30, 40746), (34, 40803), (35, 40821), (37, 40839), (50, 41058), (53, 41130), (59, 41208), (60, 41232), (64, 41301), (65, 41304), (66, 41406), (68, 41424), (69, 41457), (70, 41472), (73, 41550), (74, 41553), (81, 41682), (83, 41727), (85, 41862), (88, 41919), (89, 41934), (91, 41946), (93, 41979), (97, 42120), (99, 42204), (124, 42906), (138, 43122), (140, 43164), (141, 43173), (148, 43341), (153, 43458), (154, 43461), (158, 43512), (161, 43599), (165, 43671), (167, 43740),

Gene: BackyardAgain_93 Start: 39706, Stop: 43719, Start Num: 1

Candidate Starts for BackyardAgain_93:

(Start: 1 @39706 has 18 MA's), (21, 40408), (28, 40522), (30, 40564), (34, 40639), (35, 40657), (36, 40663), (37, 40675), (41, 40714), (50, 40891), (53, 40963), (59, 41041), (60, 41065), (64, 41134), (65, 41137), (66, 41239), (68, 41257), (69, 41290), (70, 41305), (73, 41383), (74, 41386), (81, 41515), (83, 41560), (85, 41695), (88, 41752), (91, 41779), (93, 41812), (97, 41953), (99, 42037), (124, 42739), (138, 42955), (140, 42997), (141, 43006), (148, 43174), (153, 43291), (154, 43294), (158, 43345), (161, 43432), (165, 43504), (167, 43573),

Gene: BadAgartude_93 Start: 42040, Stop: 45885, Start Num: 3

Candidate Starts for BadAgartude_93:

(Start: 3 @42040 has 159 MA's), (4, 42094), (6, 42124), (21, 42544), (28, 42658), (30, 42700), (34, 42802), (35, 42820), (37, 42838), (50, 43057), (53, 43129), (59, 43207), (60, 43231), (64, 43300), (65, 43303), (66, 43405), (68, 43423), (69, 43456), (70, 43471), (73, 43549), (74, 43552), (81, 43681), (83, 43726), (85, 43861), (88, 43918), (89, 43933), (91, 43945), (93, 43978), (97, 44119), (99, 44203), (124, 44905), (138, 45121), (140, 45163), (141, 45172), (148, 45340), (153, 45457), (154, 45460), (158, 45511), (161, 45598), (165, 45670), (167, 45739),

Gene: BananaFence_95 Start: 40751, Stop: 44584, Start Num: 3

Candidate Starts for BananaFence_95:

(Start: 3 @40751 has 159 MA's), (4, 40805), (6, 40835), (21, 41258), (28, 41372), (30, 41414), (34, 41501), (35, 41519), (37, 41537), (50, 41756), (53, 41828), (59, 41906), (60, 41930), (64, 41999), (65, 42002), (66, 42104), (68, 42122), (69, 42155), (70, 42170), (73, 42248), (74, 42251), (81, 42380), (83, 42425), (85, 42560), (88, 42617), (89, 42632), (91, 42644), (93, 42677), (97, 42818), (99, 42902), (124, 43604), (138, 43820), (140, 43862), (141, 43871), (148, 44039), (153, 44156), (154, 44159), (158, 44210), (161, 44297), (165, 44369), (167, 44438),

Gene: Bangla1971_98 Start: 41095, Stop: 44895, Start Num: 3

Candidate Starts for Bangla1971_98:

(Start: 3 @41095 has 159 MA's), (4, 41149), (6, 41179), (10, 41248), (21, 41599), (28, 41713), (30, 41755), (34, 41812), (35, 41830), (37, 41848), (50, 42067), (53, 42139), (59, 42217), (60, 42241), (64, 42310), (65, 42313), (66, 42415), (68, 42433), (69, 42466), (70, 42481), (73, 42559), (74, 42562), (81, 42691), (83, 42736), (85, 42871), (88, 42928), (89, 42943), (91, 42955), (93, 42988), (97, 43129), (99, 43213), (124, 43915), (138, 44131), (140, 44173), (141, 44182), (148, 44350), (153, 44467), (154, 44470), (158, 44521), (161, 44608), (165, 44680), (167, 44749),

Gene: Basquiat_93 Start: 39640, Stop: 43455, Start Num: 3

Candidate Starts for Basquiat_93:

(Start: 3 @39640 has 159 MA's), (4, 39694), (6, 39724), (10, 39793), (21, 40144), (28, 40258), (30, 40300), (34, 40375), (35, 40393), (36, 40399), (37, 40411), (41, 40450), (50, 40627), (53, 40699), (59, 40777), (60, 40801), (64, 40870), (65, 40873), (66, 40975), (68, 40993), (69, 41026), (70, 41041), (73, 41119), (74, 41122), (81, 41251), (83, 41296), (85, 41431), (88, 41488), (89, 41503), (91, 41515), (93, 41548), (97, 41689), (99, 41773), (124, 42475), (138, 42691), (140, 42733), (141, 42742), (148, 42910), (153, 43027), (154, 43030), (158, 43081), (161, 43168), (165, 43240), (167, 43309),

Gene: BeanWater_88 Start: 40602, Stop: 44432, Start Num: 3

Candidate Starts for BeanWater_88:

(Start: 3 @40602 has 159 MA's), (4, 40656), (6, 40686), (21, 41106), (28, 41220), (30, 41262), (34, 41349), (35, 41367), (37, 41385), (50, 41604), (53, 41676), (59, 41754), (60, 41778), (64, 41847), (65, 41850), (66, 41952), (68, 41970), (69, 42003), (70, 42018), (73, 42096), (74, 42099), (81, 42228), (83, 42273), (85, 42408), (88, 42465), (89, 42480), (91, 42492), (93, 42525), (97, 42666), (99, 42750), (124, 43452), (138, 43668), (140, 43710), (141, 43719), (148, 43887), (153, 44004), (154, 44007), (158, 44058), (161, 44145), (165, 44217), (167, 44286),

Gene: Belieber_92 Start: 39999, Stop: 43799, Start Num: 3

Candidate Starts for Belieber_92:

(Start: 3 @39999 has 159 MA's), (4, 40053), (6, 40083), (10, 40152), (21, 40503), (28, 40617), (30, 40659), (34, 40716), (35, 40734), (37, 40752), (50, 40971), (53, 41043), (59, 41121), (60, 41145), (64, 41214), (65, 41217), (66, 41319), (68, 41337), (69, 41370), (70, 41385), (73, 41463), (74, 41466), (81, 41595), (83, 41640), (85, 41775), (88, 41832), (89, 41847), (91, 41859), (93, 41892), (97, 42033), (99, 42117), (124, 42819), (138, 43035), (140, 43077), (141, 43086), (148, 43254), (153, 43371), (154, 43374), (158, 43425), (161, 43512), (165, 43584), (167, 43653),

Gene: Bezza_85 Start: 39518, Stop: 43333, Start Num: 3

Candidate Starts for Bezza_85:

(Start: 3 @39518 has 159 MA's), (4, 39572), (6, 39602), (21, 40022), (28, 40136), (30, 40178), (34, 40253), (35, 40271), (36, 40277), (37, 40289), (41, 40328), (50, 40505), (53, 40577), (59, 40655), (60, 40679), (64, 40748), (65, 40751), (66, 40853), (68, 40871), (69, 40904), (70, 40919), (73, 40997), (74, 41000), (81, 41129), (83, 41174), (85, 41309), (88, 41366), (91, 41393), (93, 41426), (97, 41567), (99, 41651), (124, 42353), (138, 42569), (140, 42611), (141, 42620), (148, 42788), (153, 42905), (154, 42908), (158, 42959), (161, 43046), (165, 43118), (167, 43187),

Gene: BigCity_104 Start: 43426, Stop: 47226, Start Num: 3

Candidate Starts for BigCity_104:

(Start: 2 @43399 has 7 MA's), (Start: 3 @43426 has 159 MA's), (4, 43480), (6, 43510), (10, 43579), (21, 43930), (28, 44044), (30, 44086), (34, 44143), (35, 44161), (37, 44179), (50, 44398), (53, 44470), (59, 44548), (60, 44572), (64, 44641), (65, 44644), (66, 44746), (68, 44764), (69, 44797), (70, 44812), (73, 44890), (74, 44893), (81, 45022), (83, 45067), (85, 45202), (88, 45259), (89, 45274), (91, 45286), (93, 45319), (97, 45460), (99, 45544), (108, 45745), (124, 46246), (138, 46462), (140, 46504), (141, 46513), (148, 46681), (153, 46798), (154, 46801), (158, 46852), (161, 46939), (165, 47011), (167, 47080),

Gene: Bigswole_101 Start: 43774, Stop: 47574, Start Num: 3

Candidate Starts for Bigswole_101:

(Start: 2 @43747 has 7 MA's), (Start: 3 @43774 has 159 MA's), (4, 43828), (6, 43858), (10, 43927), (21, 44278), (28, 44392), (30, 44434), (34, 44491), (35, 44509), (37, 44527), (50, 44746), (53, 44818), (59, 44896), (60, 44920), (64, 44989), (65, 44992), (66, 45094), (68, 45112), (69, 45145), (70, 45160), (73, 45238), (74, 45241), (81, 45370), (83, 45415), (85, 45550), (88, 45607), (89, 45622), (91, 45634), (93, 45667), (97, 45808), (99, 45892), (124, 46594), (138, 46810), (140, 46852), (141, 46861), (148,

47029), (153, 47146), (154, 47149), (158, 47200), (161, 47287), (165, 47359), (167, 47428),

Gene: Bipolarisk_95 Start: 40916, Stop: 44734, Start Num: 3

Candidate Starts for Bipolarisk_95:

(Start: 3 @40916 has 159 MA's), (4, 40970), (6, 41000), (21, 41423), (28, 41537), (30, 41579), (34, 41651), (35, 41669), (37, 41687), (50, 41906), (53, 41978), (59, 42056), (60, 42080), (64, 42149), (65, 42152), (66, 42254), (68, 42272), (69, 42305), (70, 42320), (73, 42398), (74, 42401), (81, 42530), (83, 42575), (85, 42710), (88, 42767), (89, 42782), (91, 42794), (93, 42827), (97, 42968), (99, 43052), (124, 43754), (138, 43970), (140, 44012), (141, 44021), (148, 44189), (153, 44306), (154, 44309), (158, 44360), (161, 44447), (165, 44519), (167, 44588),

Gene: Blackbrain_91 Start: 39020, Stop: 43033, Start Num: 1

Candidate Starts for Blackbrain_91:

(Start: 1 @39020 has 18 MA's), (21, 39722), (28, 39836), (30, 39878), (34, 39953), (35, 39971), (36, 39977), (37, 39989), (41, 40028), (50, 40205), (53, 40277), (59, 40355), (60, 40379), (64, 40448), (65, 40451), (66, 40553), (68, 40571), (69, 40604), (70, 40619), (73, 40697), (74, 40700), (81, 40829), (83, 40874), (85, 41009), (88, 41066), (89, 41081), (91, 41093), (93, 41126), (97, 41267), (99, 41351), (124, 42053), (138, 42269), (140, 42311), (141, 42320), (148, 42488), (153, 42605), (154, 42608), (158, 42659), (161, 42746), (165, 42818), (167, 42887),

Gene: Blackdragon_92 Start: 40171, Stop: 44007, Start Num: 3

Candidate Starts for Blackdragon_92:

(Start: 3 @40171 has 159 MA's), (4, 40225), (6, 40255), (10, 40324), (21, 40675), (28, 40789), (30, 40831), (34, 40924), (35, 40942), (37, 40960), (50, 41179), (53, 41251), (59, 41329), (60, 41353), (64, 41422), (65, 41425), (66, 41527), (68, 41545), (69, 41578), (70, 41593), (73, 41671), (74, 41674), (81, 41803), (83, 41848), (85, 41983), (88, 42040), (89, 42055), (91, 42067), (93, 42100), (97, 42241), (99, 42325), (124, 43027), (138, 43243), (140, 43285), (141, 43294), (148, 43462), (153, 43579), (154, 43582), (158, 43633), (161, 43720), (165, 43792), (167, 43861),

Gene: Blubba_85 Start: 39561, Stop: 43364, Start Num: 3

Candidate Starts for Blubba_85:

(Start: 2 @39534 has 7 MA's), (Start: 3 @39561 has 159 MA's), (4, 39615), (6, 39645), (9, 39684), (21, 40065), (28, 40179), (30, 40221), (34, 40290), (35, 40308), (36, 40314), (37, 40326), (41, 40365), (50, 40542), (53, 40614), (59, 40692), (60, 40716), (64, 40785), (65, 40788), (66, 40890), (69, 40941), (70, 40956), (73, 41034), (74, 41037), (81, 41166), (83, 41211), (85, 41346), (88, 41403), (91, 41430), (93, 41463), (97, 41604), (99, 41688), (106, 41862), (120, 42225), (124, 42381), (138, 42597), (140, 42639), (141, 42648), (148, 42816), (153, 42933), (154, 42936), (158, 42987), (161, 43074), (165, 43146), (166, 43206), (167, 43218),

Gene: BobaPhatt_92 Start: 39280, Stop: 43080, Start Num: 3

Candidate Starts for BobaPhatt_92:

(Start: 3 @39280 has 159 MA's), (4, 39334), (6, 39364), (10, 39433), (21, 39784), (28, 39898), (30, 39940), (34, 39997), (35, 40015), (37, 40033), (50, 40252), (53, 40324), (59, 40402), (60, 40426), (64, 40495), (65, 40498), (66, 40600), (68, 40618), (69, 40651), (70, 40666), (73, 40744), (74, 40747), (81, 40876), (83, 40921), (85, 41056), (88, 41113), (89, 41128), (91, 41140), (93, 41173), (97, 41314), (99, 41398), (124, 42100), (138, 42316), (140, 42358), (141, 42367), (148, 42535), (153, 42652), (154, 42655), (158, 42706), (161, 42793), (165, 42865), (167, 42934),

Gene: Bonray_96 Start: 41312, Stop: 45142, Start Num: 3

Candidate Starts for Bonray_96:

(Start: 3 @41312 has 159 MA's), (4, 41366), (6, 41396), (21, 41816), (28, 41930), (30, 41972), (34, 42059), (35, 42077), (37, 42095), (50, 42314), (53, 42386), (59, 42464), (60, 42488), (64, 42557), (65, 42560), (66, 42662), (68, 42680), (69, 42713), (70, 42728), (73, 42806), (74, 42809), (81, 42938), (83,

42983), (85, 43118), (88, 43175), (89, 43190), (91, 43202), (93, 43235), (97, 43376), (99, 43460), (124, 44162), (138, 44378), (140, 44420), (141, 44429), (148, 44597), (153, 44714), (154, 44717), (158, 44768), (161, 44855), (165, 44927), (167, 44996),

Gene: Bowman_94 Start: 41504, Stop: 45352, Start Num: 3

Candidate Starts for Bowman_94:

(Start: 3 @41504 has 159 MA's), (4, 41558), (6, 41588), (21, 42011), (28, 42125), (30, 42167), (34, 42269), (35, 42287), (37, 42305), (50, 42524), (53, 42596), (59, 42674), (60, 42698), (64, 42767), (65, 42770), (66, 42872), (68, 42890), (69, 42923), (70, 42938), (73, 43016), (74, 43019), (81, 43148), (83, 43193), (85, 43328), (88, 43385), (89, 43400), (91, 43412), (93, 43445), (97, 43586), (99, 43670), (124, 44372), (138, 44588), (140, 44630), (141, 44639), (148, 44807), (153, 44924), (154, 44927), (158, 44978), (161, 45065), (165, 45137), (167, 45206),

Gene: Bread_96 Start: 40972, Stop: 44802, Start Num: 3

Candidate Starts for Bread_96:

(Start: 2 @40945 has 7 MA's), (Start: 3 @40972 has 159 MA's), (4, 41026), (6, 41056), (10, 41125), (21, 41476), (28, 41590), (30, 41632), (34, 41719), (35, 41737), (37, 41755), (50, 41974), (53, 42046), (59, 42124), (60, 42148), (64, 42217), (65, 42220), (66, 42322), (68, 42340), (69, 42373), (70, 42388), (73, 42466), (74, 42469), (81, 42598), (83, 42643), (85, 42778), (88, 42835), (89, 42850), (91, 42862), (93, 42895), (97, 43036), (99, 43120), (124, 43822), (138, 44038), (140, 44080), (141, 44089), (148, 44257), (153, 44374), (154, 44377), (158, 44428), (161, 44515), (165, 44587), (167, 44656),

Gene: Breeniome_96 Start: 40168, Stop: 44028, Start Num: 2

Candidate Starts for Breeniome_96:

(Start: 2 @40168 has 7 MA's), (Start: 3 @40195 has 159 MA's), (4, 40249), (6, 40279), (10, 40348), (21, 40702), (28, 40816), (30, 40858), (34, 40945), (35, 40963), (37, 40981), (50, 41200), (53, 41272), (59, 41350), (60, 41374), (64, 41443), (65, 41446), (66, 41548), (68, 41566), (69, 41599), (70, 41614), (73, 41692), (74, 41695), (81, 41824), (83, 41869), (85, 42004), (88, 42061), (89, 42076), (91, 42088), (93, 42121), (97, 42262), (99, 42346), (124, 43048), (138, 43264), (140, 43306), (141, 43315), (148, 43483), (153, 43600), (154, 43603), (158, 43654), (161, 43741), (165, 43813), (167, 43882),

Gene: Burrough_96 Start: 41465, Stop: 45298, Start Num: 3

Candidate Starts for Burrough_96:

(Start: 3 @41465 has 159 MA's), (4, 41519), (6, 41549), (21, 41972), (28, 42086), (30, 42128), (34, 42215), (35, 42233), (37, 42251), (50, 42470), (53, 42542), (59, 42620), (60, 42644), (64, 42713), (65, 42716), (66, 42818), (68, 42836), (69, 42869), (70, 42884), (73, 42962), (74, 42965), (81, 43094), (83, 43139), (85, 43274), (88, 43331), (89, 43346), (91, 43358), (93, 43391), (97, 43532), (99, 43616), (124, 44318), (138, 44534), (140, 44576), (141, 44585), (148, 44753), (153, 44870), (154, 44873), (158, 44924), (161, 45011), (165, 45083), (167, 45152),

Gene: Bxz1_94 Start: 42516, Stop: 46349, Start Num: 3

Candidate Starts for Bxz1_94:

(Start: 3 @42516 has 159 MA's), (4, 42570), (6, 42600), (21, 43023), (28, 43137), (30, 43179), (34, 43266), (35, 43284), (37, 43302), (50, 43521), (53, 43593), (59, 43671), (60, 43695), (64, 43764), (65, 43767), (66, 43869), (68, 43887), (69, 43920), (70, 43935), (73, 44013), (74, 44016), (81, 44145), (83, 44190), (85, 44325), (88, 44382), (89, 44397), (91, 44409), (93, 44442), (97, 44583), (99, 44667), (124, 45369), (138, 45585), (140, 45627), (141, 45636), (148, 45804), (153, 45921), (154, 45924), (158, 45975), (161, 46062), (165, 46134), (167, 46203),

Gene: Cactojaque_91 Start: 39127, Stop: 43140, Start Num: 1

Candidate Starts for Cactojaque_91:

(Start: 1 @39127 has 18 MA's), (21, 39829), (28, 39943), (30, 39985), (34, 40060), (35, 40078), (36, 40084), (37, 40096), (41, 40135), (50, 40312), (53, 40384), (59, 40462), (60, 40486), (64, 40555), (65,

40558), (66, 40660), (68, 40678), (69, 40711), (70, 40726), (73, 40804), (74, 40807), (81, 40936), (83, 40981), (85, 41116), (88, 41173), (89, 41188), (91, 41200), (93, 41233), (97, 41374), (99, 41458), (124, 42160), (138, 42376), (140, 42418), (141, 42427), (148, 42595), (153, 42712), (154, 42715), (158, 42766), (161, 42853), (165, 42925), (167, 42994),

Gene: Cali_92 Start: 41479, Stop: 45315, Start Num: 3

Candidate Starts for Cali_92:

(Start: 3 @41479 has 159 MA's), (4, 41533), (6, 41563), (10, 41632), (21, 41983), (28, 42097), (30, 42139), (34, 42232), (35, 42250), (37, 42268), (50, 42487), (53, 42559), (59, 42637), (60, 42661), (64, 42730), (65, 42733), (66, 42835), (68, 42853), (69, 42886), (70, 42901), (73, 42979), (74, 42982), (81, 43111), (83, 43156), (85, 43291), (88, 43348), (89, 43363), (91, 43375), (93, 43408), (97, 43549), (99, 43633), (124, 44335), (138, 44551), (140, 44593), (141, 44602), (148, 44770), (153, 44887), (154, 44890), (158, 44941), (161, 45028), (165, 45100), (167, 45169),

Gene: Cane17_85 Start: 39634, Stop: 43437, Start Num: 3

Candidate Starts for Cane17_85:

(Start: 2 @39607 has 7 MA's), (Start: 3 @39634 has 159 MA's), (4, 39688), (6, 39718), (9, 39757), (21, 40138), (28, 40252), (30, 40294), (34, 40363), (35, 40381), (36, 40387), (37, 40399), (41, 40438), (50, 40615), (53, 40687), (59, 40765), (60, 40789), (64, 40858), (65, 40861), (66, 40963), (69, 41014), (70, 41029), (73, 41107), (74, 41110), (81, 41239), (83, 41284), (85, 41419), (88, 41476), (91, 41503), (93, 41536), (97, 41677), (99, 41761), (106, 41935), (120, 42298), (124, 42454), (138, 42670), (140, 42712), (141, 42721), (148, 42889), (153, 43006), (154, 43009), (158, 43060), (161, 43147), (165, 43219), (166, 43279), (167, 43291),

Gene: Capablanca_98 Start: 41335, Stop: 45165, Start Num: 3

Candidate Starts for Capablanca_98:

(Start: 3 @41335 has 159 MA's), (4, 41389), (6, 41419), (21, 41839), (28, 41953), (30, 41995), (34, 42082), (35, 42100), (37, 42118), (50, 42337), (53, 42409), (59, 42487), (60, 42511), (64, 42580), (65, 42583), (66, 42685), (68, 42703), (69, 42736), (70, 42751), (73, 42829), (74, 42832), (81, 42961), (83, 43006), (85, 43141), (88, 43198), (89, 43213), (91, 43225), (93, 43258), (97, 43399), (99, 43483), (124, 44185), (138, 44401), (140, 44443), (141, 44452), (148, 44620), (153, 44737), (154, 44740), (158, 44791), (161, 44878), (165, 44950), (167, 45019),

Gene: Caravan_91 Start: 40839, Stop: 44669, Start Num: 3

Candidate Starts for Caravan_91:

(Start: 3 @40839 has 159 MA's), (4, 40893), (6, 40923), (21, 41343), (28, 41457), (30, 41499), (34, 41586), (35, 41604), (37, 41622), (50, 41841), (53, 41913), (59, 41991), (60, 42015), (64, 42084), (65, 42087), (66, 42189), (68, 42207), (69, 42240), (70, 42255), (73, 42333), (74, 42336), (81, 42465), (83, 42510), (85, 42645), (88, 42702), (89, 42717), (91, 42729), (93, 42762), (97, 42903), (99, 42987), (124, 43689), (138, 43905), (140, 43947), (141, 43956), (148, 44124), (153, 44241), (154, 44244), (158, 44295), (161, 44382), (165, 44454), (167, 44523),

Gene: Catera_93 Start: 39292, Stop: 43305, Start Num: 1

Candidate Starts for Catera_93:

(Start: 1 @39292 has 18 MA's), (21, 39994), (28, 40108), (30, 40150), (34, 40225), (35, 40243), (36, 40249), (37, 40261), (41, 40300), (50, 40477), (53, 40549), (59, 40627), (60, 40651), (64, 40720), (65, 40723), (66, 40825), (68, 40843), (69, 40876), (70, 40891), (73, 40969), (74, 40972), (81, 41101), (83, 41146), (85, 41281), (88, 41338), (91, 41365), (93, 41398), (97, 41539), (99, 41623), (124, 42325), (138, 42541), (140, 42583), (141, 42592), (148, 42760), (153, 42877), (154, 42880), (158, 42931), (161, 43018), (165, 43090), (167, 43159),

Gene: Chargie21_93 Start: 39640, Stop: 43455, Start Num: 3

Candidate Starts for Chargie21_93:

(Start: 3 @39640 has 159 MA's), (4, 39694), (6, 39724), (10, 39793), (21, 40144), (28, 40258), (30, 40300), (34, 40375), (35, 40393), (36, 40399), (37, 40411), (41, 40450), (50, 40627), (53, 40699), (59, 40777), (60, 40801), (64, 40870), (65, 40873), (66, 40975), (68, 40993), (69, 41026), (70, 41041), (73, 41119), (74, 41122), (81, 41251), (83, 41296), (85, 41431), (88, 41488), (89, 41503), (91, 41515), (93, 41548), (97, 41689), (99, 41773), (124, 42475), (138, 42691), (140, 42733), (141, 42742), (148, 42910), (153, 43027), (154, 43030), (158, 43081), (161, 43168), (165, 43240), (167, 43309),

Gene: CharlieB_92 Start: 39477, Stop: 43313, Start Num: 3

Candidate Starts for CharlieB_92:

(Start: 3 @39477 has 159 MA's), (4, 39531), (6, 39561), (10, 39630), (21, 39981), (28, 40095), (30, 40137), (34, 40230), (35, 40248), (37, 40266), (50, 40485), (53, 40557), (59, 40635), (60, 40659), (64, 40728), (65, 40731), (66, 40833), (68, 40851), (69, 40884), (70, 40899), (73, 40977), (74, 40980), (81, 41109), (83, 41154), (85, 41289), (88, 41346), (89, 41361), (91, 41373), (93, 41406), (97, 41547), (99, 41631), (124, 42333), (138, 42549), (140, 42591), (141, 42600), (148, 42768), (153, 42885), (154, 42888), (158, 42939), (161, 43026), (165, 43098), (167, 43167),

Gene: ChaylaJr_91 Start: 38918, Stop: 42931, Start Num: 1

Candidate Starts for ChaylaJr_91:

(Start: 1 @38918 has 18 MA's), (21, 39620), (28, 39734), (30, 39776), (34, 39851), (35, 39869), (36, 39875), (37, 39887), (41, 39926), (50, 40103), (53, 40175), (59, 40253), (60, 40277), (64, 40346), (65, 40349), (66, 40451), (68, 40469), (69, 40502), (70, 40517), (73, 40595), (74, 40598), (81, 40727), (83, 40772), (85, 40907), (88, 40964), (89, 40979), (91, 40991), (93, 41024), (97, 41165), (99, 41249), (124, 41951), (138, 42167), (140, 42209), (141, 42218), (148, 42386), (153, 42503), (154, 42506), (158, 42557), (161, 42644), (165, 42716), (167, 42785),

Gene: ChickenPhender_92 Start: 39251, Stop: 43264, Start Num: 1

Candidate Starts for ChickenPhender_92:

(Start: 1 @39251 has 18 MA's), (21, 39953), (28, 40067), (30, 40109), (34, 40184), (35, 40202), (36, 40208), (37, 40220), (41, 40259), (50, 40436), (53, 40508), (59, 40586), (60, 40610), (64, 40679), (65, 40682), (66, 40784), (68, 40802), (69, 40835), (70, 40850), (73, 40928), (74, 40931), (81, 41060), (83, 41105), (85, 41240), (88, 41297), (89, 41312), (91, 41324), (93, 41357), (97, 41498), (99, 41582), (124, 42284), (138, 42500), (140, 42542), (141, 42551), (148, 42719), (153, 42836), (154, 42839), (158, 42890), (161, 42977), (165, 43049), (167, 43118),

Gene: Chomp_96 Start: 41935, Stop: 45735, Start Num: 3

Candidate Starts for Chomp_96:

(Start: 3 @41935 has 159 MA's), (4, 41989), (6, 42019), (10, 42088), (21, 42439), (28, 42553), (30, 42595), (34, 42652), (35, 42670), (37, 42688), (50, 42907), (53, 42979), (59, 43057), (60, 43081), (64, 43150), (65, 43153), (66, 43255), (68, 43273), (69, 43306), (70, 43321), (73, 43399), (74, 43402), (81, 43531), (83, 43576), (85, 43711), (88, 43768), (89, 43783), (91, 43795), (93, 43828), (97, 43969), (99, 44053), (124, 44755), (138, 44971), (140, 45013), (141, 45022), (148, 45190), (153, 45307), (154, 45310), (158, 45361), (161, 45448), (165, 45520), (167, 45589),

Gene: CindyLou_98 Start: 41976, Stop: 45776, Start Num: 3

Candidate Starts for CindyLou_98:

(Start: 3 @41976 has 159 MA's), (4, 42030), (6, 42060), (10, 42129), (21, 42480), (28, 42594), (30, 42636), (34, 42693), (35, 42711), (37, 42729), (50, 42948), (53, 43020), (59, 43098), (60, 43122), (64, 43191), (65, 43194), (66, 43296), (68, 43314), (69, 43347), (70, 43362), (73, 43440), (74, 43443), (81, 43572), (83, 43617), (85, 43752), (88, 43809), (89, 43824), (91, 43836), (93, 43869), (97, 44010), (99, 44094), (124, 44796), (138, 45012), (140, 45054), (141, 45063), (148, 45231), (153, 45348), (154, 45351), (158, 45402), (161, 45489), (165, 45561), (167, 45630),

Gene: Cleatunium_91 Start: 40600, Stop: 44433, Start Num: 3

Candidate Starts for Cleatunium_91:

(Start: 3 @40600 has 159 MA's), (4, 40654), (6, 40684), (21, 41107), (28, 41221), (30, 41263), (34, 41350), (35, 41368), (37, 41386), (50, 41605), (53, 41677), (59, 41755), (60, 41779), (64, 41848), (65, 41851), (66, 41953), (68, 41971), (69, 42004), (70, 42019), (73, 42097), (74, 42100), (81, 42229), (83, 42274), (85, 42409), (88, 42466), (89, 42481), (91, 42493), (93, 42526), (97, 42667), (99, 42751), (124, 43453), (138, 43669), (140, 43711), (141, 43720), (148, 43888), (153, 44005), (154, 44008), (158, 44059), (161, 44146), (165, 44218), (167, 44287),

Gene: Colt_86 Start: 40230, Stop: 44033, Start Num: 3

Candidate Starts for Colt_86:

(Start: 2 @40203 has 7 MA's), (Start: 3 @40230 has 159 MA's), (4, 40284), (6, 40314), (9, 40353), (21, 40734), (28, 40848), (30, 40890), (34, 40959), (35, 40977), (36, 40983), (37, 40995), (41, 41034), (50, 41211), (53, 41283), (59, 41361), (60, 41385), (64, 41454), (65, 41457), (66, 41559), (69, 41610), (70, 41625), (73, 41703), (74, 41706), (81, 41835), (83, 41880), (85, 42015), (88, 42072), (91, 42099), (93, 42132), (97, 42273), (99, 42357), (106, 42531), (120, 42894), (124, 43050), (138, 43266), (140, 43308), (141, 43317), (148, 43485), (153, 43602), (154, 43605), (158, 43656), (161, 43743), (165, 43815), (166, 43875), (167, 43887),

Gene: Concombre_103 Start: 43615, Stop: 47451, Start Num: 3

Candidate Starts for Concombre_103:

(Start: 2 @43588 has 7 MA's), (Start: 3 @43615 has 159 MA's), (4, 43669), (6, 43699), (10, 43768), (21, 44119), (28, 44233), (30, 44275), (34, 44368), (35, 44386), (37, 44404), (50, 44623), (53, 44695), (59, 44773), (60, 44797), (64, 44866), (65, 44869), (66, 44971), (68, 44989), (69, 45022), (70, 45037), (73, 45115), (74, 45118), (81, 45247), (83, 45292), (85, 45427), (88, 45484), (89, 45499), (91, 45511), (93, 45544), (97, 45685), (99, 45769), (124, 46471), (138, 46687), (140, 46729), (141, 46738), (148, 46906), (153, 47023), (154, 47026), (158, 47077), (161, 47164), (165, 47236), (167, 47305),

Gene: DTDevon_97 Start: 41535, Stop: 45335, Start Num: 3

Candidate Starts for DTDevon_97:

(Start: 2 @41508 has 7 MA's), (Start: 3 @41535 has 159 MA's), (4, 41589), (6, 41619), (10, 41688), (21, 42039), (28, 42153), (30, 42195), (34, 42252), (35, 42270), (37, 42288), (50, 42507), (53, 42579), (59, 42657), (60, 42681), (64, 42750), (65, 42753), (66, 42855), (68, 42873), (69, 42906), (70, 42921), (73, 42999), (74, 43002), (81, 43131), (83, 43176), (85, 43311), (88, 43368), (89, 43383), (91, 43395), (93, 43428), (97, 43569), (99, 43653), (124, 44355), (138, 44571), (140, 44613), (141, 44622), (148, 44790), (153, 44907), (154, 44910), (158, 44961), (161, 45048), (165, 45120), (167, 45189),

Gene: Daffodil_101 Start: 41204, Stop: 45034, Start Num: 3

Candidate Starts for Daffodil_101:

(Start: 3 @41204 has 159 MA's), (4, 41258), (6, 41288), (21, 41708), (28, 41822), (30, 41864), (34, 41951), (35, 41969), (37, 41987), (50, 42206), (53, 42278), (59, 42356), (60, 42380), (64, 42449), (65, 42452), (66, 42554), (68, 42572), (69, 42605), (70, 42620), (73, 42698), (74, 42701), (81, 42830), (83, 42875), (85, 43010), (88, 43067), (89, 43082), (91, 43094), (93, 43127), (97, 43268), (99, 43352), (124, 44054), (138, 44270), (140, 44312), (141, 44321), (148, 44489), (153, 44606), (154, 44609), (158, 44660), (161, 44747), (165, 44819), (167, 44888),

Gene: Dandelion_103 Start: 43898, Stop: 47698, Start Num: 3

Candidate Starts for Dandelion_103:

(Start: 2 @43871 has 7 MA's), (Start: 3 @43898 has 159 MA's), (4, 43952), (6, 43982), (10, 44051), (21, 44402), (28, 44516), (30, 44558), (34, 44615), (35, 44633), (37, 44651), (50, 44870), (53, 44942), (59, 45020), (60, 45044), (64, 45113), (65, 45116), (66, 45218), (68, 45236), (69, 45269), (70, 45284), (73, 45362), (74, 45365), (81, 45494), (83, 45539), (85, 45674), (88, 45731), (89, 45746), (91, 45758), (93, 45791), (97, 45932), (99, 46016), (124, 46718), (138, 46934), (140, 46976), (141, 46985), (148, 47153), (153, 47270), (154, 47273), (158, 47324), (161, 47411), (165, 47483), (167, 47552),

Gene: Darko_96 Start: 41139, Stop: 44972, Start Num: 3

Candidate Starts for Darko_96:

(Start: 3 @41139 has 159 MA's), (4, 41193), (6, 41223), (21, 41646), (28, 41760), (30, 41802), (34, 41889), (35, 41907), (37, 41925), (50, 42144), (53, 42216), (59, 42294), (60, 42318), (64, 42387), (65, 42390), (66, 42492), (68, 42510), (69, 42543), (70, 42558), (73, 42636), (74, 42639), (81, 42768), (83, 42813), (85, 42948), (88, 43005), (89, 43020), (91, 43032), (93, 43065), (97, 43206), (99, 43290), (124, 43992), (138, 44208), (140, 44250), (141, 44259), (148, 44427), (153, 44544), (154, 44547), (158, 44598), (161, 44685), (165, 44757), (167, 44826),

Gene: DeejaClivia_85 Start: 37057, Stop: 41070, Start Num: 1

Candidate Starts for DeejaClivia_85:

(Start: 1 @37057 has 18 MA's), (14, 37525), (21, 37759), (28, 37873), (30, 37915), (34, 37990), (35, 38008), (36, 38014), (37, 38026), (41, 38065), (50, 38242), (53, 38314), (59, 38392), (60, 38416), (64, 38485), (65, 38488), (66, 38590), (68, 38608), (69, 38641), (70, 38656), (73, 38734), (74, 38737), (81, 38866), (83, 38911), (85, 39046), (88, 39103), (91, 39130), (93, 39163), (97, 39304), (99, 39388), (124, 40090), (138, 40306), (140, 40348), (141, 40357), (148, 40525), (153, 40642), (154, 40645), (158, 40696), (161, 40783), (165, 40855), (167, 40924),

Gene: Delilah_96 Start: 41205, Stop: 45035, Start Num: 3

Candidate Starts for Delilah_96:

(Start: 3 @41205 has 159 MA's), (4, 41259), (6, 41289), (21, 41709), (28, 41823), (30, 41865), (34, 41952), (35, 41970), (37, 41988), (50, 42207), (53, 42279), (59, 42357), (60, 42381), (64, 42450), (65, 42453), (66, 42555), (68, 42573), (69, 42606), (70, 42621), (73, 42699), (74, 42702), (81, 42831), (83, 42876), (85, 43011), (88, 43068), (89, 43083), (91, 43095), (93, 43128), (97, 43269), (99, 43353), (124, 44055), (138, 44271), (140, 44313), (141, 44322), (148, 44490), (153, 44607), (154, 44610), (158, 44661), (161, 44748), (165, 44820), (167, 44889),

Gene: Delylah_99 Start: 40998, Stop: 44828, Start Num: 3

Candidate Starts for Delylah_99:

(Start: 3 @40998 has 159 MA's), (4, 41052), (6, 41082), (21, 41502), (28, 41616), (30, 41658), (34, 41745), (35, 41763), (37, 41781), (50, 42000), (53, 42072), (59, 42150), (60, 42174), (64, 42243), (65, 42246), (66, 42348), (68, 42366), (69, 42399), (70, 42414), (73, 42492), (74, 42495), (81, 42624), (83, 42669), (85, 42804), (88, 42861), (89, 42876), (91, 42888), (93, 42921), (97, 43062), (99, 43146), (124, 43848), (138, 44064), (140, 44106), (141, 44115), (148, 44283), (153, 44400), (154, 44403), (158, 44454), (161, 44541), (165, 44613), (167, 44682),

Gene: Demodog_103 Start: 43615, Stop: 47451, Start Num: 3

Candidate Starts for Demodog_103:

(Start: 2 @43588 has 7 MA's), (Start: 3 @43615 has 159 MA's), (4, 43669), (6, 43699), (10, 43768), (21, 44119), (28, 44233), (30, 44275), (34, 44368), (35, 44386), (37, 44404), (50, 44623), (53, 44695), (59, 44773), (60, 44797), (64, 44866), (65, 44869), (66, 44971), (68, 44989), (69, 45022), (70, 45037), (73, 45115), (74, 45118), (81, 45247), (83, 45292), (85, 45427), (88, 45484), (89, 45499), (91, 45511), (93, 45544), (97, 45685), (99, 45769), (124, 46471), (138, 46687), (140, 46729), (141, 46738), (148, 46906), (153, 47023), (154, 47026), (158, 47077), (161, 47164), (165, 47236), (167, 47305),

Gene: Derek_97 Start: 41737, Stop: 45537, Start Num: 3

Candidate Starts for Derek_97:

(Start: 3 @41737 has 159 MA's), (4, 41791), (6, 41821), (10, 41890), (21, 42241), (28, 42355), (30, 42397), (34, 42454), (35, 42472), (37, 42490), (50, 42709), (53, 42781), (59, 42859), (60, 42883), (64, 42952), (65, 42955), (66, 43057), (68, 43075), (69, 43108), (70, 43123), (73, 43201), (74, 43204), (81, 43333), (83, 43378), (85, 43513), (88, 43570), (89, 43585), (91, 43597), (93, 43630), (97, 43771), (99, 43855), (124, 44557), (138, 44773), (140, 44815), (141, 44824), (148, 44992), (153, 45109), (154,

45112), (158, 45163), (161, 45250), (165, 45322), (167, 45391),

Gene: Dessert_94 Start: 40210, Stop: 44013, Start Num: 3

Candidate Starts for Dessert_94:

(Start: 3 @40210 has 159 MA's), (4, 40264), (6, 40294), (21, 40717), (28, 40831), (30, 40873), (34, 40930), (35, 40948), (37, 40966), (50, 41185), (53, 41257), (59, 41335), (60, 41359), (64, 41428), (65, 41431), (66, 41533), (68, 41551), (69, 41584), (70, 41599), (73, 41677), (74, 41680), (81, 41809), (83, 41854), (85, 41989), (88, 42046), (89, 42061), (91, 42073), (93, 42106), (97, 42247), (99, 42331), (124, 43033), (138, 43249), (140, 43291), (141, 43300), (148, 43468), (153, 43585), (154, 43588), (158, 43639), (161, 43726), (165, 43798), (167, 43867),

Gene: Dietrick_88 Start: 38954, Stop: 42967, Start Num: 1

Candidate Starts for Dietrick_88:

(Start: 1 @38954 has 18 MA's), (21, 39656), (28, 39770), (30, 39812), (34, 39887), (35, 39905), (36, 39911), (37, 39923), (41, 39962), (50, 40139), (53, 40211), (59, 40289), (60, 40313), (64, 40382), (65, 40385), (66, 40487), (68, 40505), (69, 40538), (70, 40553), (73, 40631), (74, 40634), (81, 40763), (83, 40808), (85, 40943), (88, 41000), (91, 41027), (93, 41060), (97, 41201), (99, 41285), (124, 41987), (138, 42203), (140, 42245), (141, 42254), (148, 42422), (153, 42539), (154, 42542), (158, 42593), (161, 42680), (165, 42752), (167, 42821),

Gene: DirtMonster_90 Start: 40233, Stop: 44069, Start Num: 3

Candidate Starts for DirtMonster_90:

(Start: 3 @40233 has 159 MA's), (4, 40287), (6, 40317), (10, 40386), (21, 40737), (28, 40851), (30, 40893), (34, 40986), (35, 41004), (37, 41022), (50, 41241), (53, 41313), (59, 41391), (60, 41415), (64, 41484), (65, 41487), (66, 41589), (68, 41607), (69, 41640), (70, 41655), (73, 41733), (74, 41736), (81, 41865), (83, 41910), (85, 42045), (88, 42102), (89, 42117), (91, 42129), (93, 42162), (97, 42303), (99, 42387), (124, 43089), (138, 43305), (140, 43347), (141, 43356), (148, 43524), (153, 43641), (154, 43644), (158, 43695), (161, 43782), (165, 43854), (167, 43923),

Gene: Domi_90 Start: 40533, Stop: 44378, Start Num: 3

Candidate Starts for Domi_90:

(Start: 3 @40533 has 159 MA's), (4, 40587), (6, 40617), (21, 41037), (28, 41151), (30, 41193), (34, 41295), (35, 41313), (37, 41331), (50, 41550), (53, 41622), (59, 41700), (60, 41724), (64, 41793), (65, 41796), (66, 41898), (68, 41916), (69, 41949), (70, 41964), (73, 42042), (74, 42045), (81, 42174), (83, 42219), (85, 42354), (88, 42411), (89, 42426), (91, 42438), (93, 42471), (97, 42612), (99, 42696), (124, 43398), (138, 43614), (140, 43656), (141, 43665), (148, 43833), (153, 43950), (154, 43953), (158, 44004), (161, 44091), (165, 44163), (167, 44232),

Gene: DrPhinkDaddy_95 Start: 41424, Stop: 45254, Start Num: 3

Candidate Starts for DrPhinkDaddy_95:

(Start: 2 @41397 has 7 MA's), (Start: 3 @41424 has 159 MA's), (4, 41478), (6, 41508), (10, 41577), (21, 41928), (28, 42042), (30, 42084), (34, 42171), (35, 42189), (37, 42207), (50, 42426), (53, 42498), (59, 42576), (60, 42600), (64, 42669), (65, 42672), (66, 42774), (68, 42792), (69, 42825), (70, 42840), (73, 42918), (74, 42921), (81, 43050), (83, 43095), (85, 43230), (88, 43287), (89, 43302), (91, 43314), (93, 43347), (97, 43488), (99, 43572), (124, 44274), (138, 44490), (140, 44532), (141, 44541), (148, 44709), (153, 44826), (154, 44829), (158, 44880), (161, 44967), (165, 45039), (167, 45108),

Gene: Drazdys_96 Start: 41002, Stop: 44835, Start Num: 3

Candidate Starts for Drazdys_96:

(Start: 3 @41002 has 159 MA's), (4, 41056), (6, 41086), (21, 41509), (28, 41623), (30, 41665), (34, 41752), (35, 41770), (37, 41788), (50, 42007), (53, 42079), (59, 42157), (60, 42181), (64, 42250), (65, 42253), (66, 42355), (68, 42373), (69, 42406), (70, 42421), (73, 42499), (74, 42502), (81, 42631), (83, 42676), (85, 42811), (88, 42868), (89, 42883), (91, 42895), (93, 42928), (97, 43069), (99, 43153), (124,

43855), (138, 44071), (140, 44113), (141, 44122), (148, 44290), (153, 44407), (154, 44410), (158, 44461), (161, 44548), (165, 44620), (167, 44689),

Gene: Duckfeet_89 Start: 39444, Stop: 43280, Start Num: 3

Candidate Starts for Duckfeet_89:

(Start: 3 @39444 has 159 MA's), (4, 39498), (6, 39528), (10, 39597), (21, 39948), (28, 40062), (30, 40104), (34, 40197), (35, 40215), (37, 40233), (50, 40452), (53, 40524), (59, 40602), (60, 40626), (64, 40695), (65, 40698), (66, 40800), (68, 40818), (69, 40851), (70, 40866), (73, 40944), (74, 40947), (81, 41076), (83, 41121), (85, 41256), (88, 41313), (89, 41328), (91, 41340), (93, 41373), (97, 41514), (99, 41598), (124, 42300), (138, 42516), (140, 42558), (141, 42567), (148, 42735), (153, 42852), (154, 42855), (158, 42906), (161, 42993), (165, 43065), (167, 43134),

Gene: ET08_85 Start: 39976, Stop: 43821, Start Num: 3

Candidate Starts for ET08_85:

(Start: 3 @39976 has 159 MA's), (4, 40030), (6, 40060), (21, 40480), (28, 40594), (30, 40636), (34, 40738), (35, 40756), (37, 40774), (50, 40993), (53, 41065), (59, 41143), (60, 41167), (64, 41236), (65, 41239), (66, 41341), (68, 41359), (69, 41392), (70, 41407), (73, 41485), (74, 41488), (81, 41617), (83, 41662), (85, 41797), (88, 41854), (89, 41869), (91, 41881), (93, 41914), (97, 42055), (99, 42139), (124, 42841), (138, 43057), (140, 43099), (141, 43108), (148, 43276), (153, 43393), (154, 43396), (158, 43447), (161, 43534), (165, 43606), (167, 43675),

Gene: EasyJones_99 Start: 40310, Stop: 44323, Start Num: 1

Candidate Starts for EasyJones_99:

(Start: 1 @40310 has 18 MA's), (21, 41012), (28, 41126), (30, 41168), (34, 41243), (35, 41261), (36, 41267), (37, 41279), (41, 41318), (50, 41495), (53, 41567), (59, 41645), (60, 41669), (64, 41738), (65, 41741), (66, 41843), (68, 41861), (69, 41894), (70, 41909), (73, 41987), (74, 41990), (81, 42119), (83, 42164), (85, 42299), (88, 42356), (89, 42371), (91, 42383), (93, 42416), (97, 42557), (99, 42641), (124, 43343), (138, 43559), (140, 43601), (141, 43610), (148, 43778), (153, 43895), (154, 43898), (158, 43949), (161, 44036), (165, 44108), (167, 44177),

Gene: EggyFarm_104 Start: 43426, Stop: 47226, Start Num: 3

Candidate Starts for EggyFarm_104:

(Start: 2 @43399 has 7 MA's), (Start: 3 @43426 has 159 MA's), (4, 43480), (6, 43510), (10, 43579), (21, 43930), (28, 44044), (30, 44086), (34, 44143), (35, 44161), (37, 44179), (50, 44398), (53, 44470), (59, 44548), (60, 44572), (64, 44641), (65, 44644), (66, 44746), (68, 44764), (69, 44797), (70, 44812), (73, 44890), (74, 44893), (81, 45022), (83, 45067), (85, 45202), (88, 45259), (89, 45274), (91, 45286), (93, 45319), (97, 45460), (99, 45544), (108, 45745), (124, 46246), (138, 46462), (140, 46504), (141, 46513), (148, 46681), (153, 46798), (154, 46801), (158, 46852), (161, 46939), (165, 47011), (167, 47080),

Gene: EmToTheThree_99 Start: 42656, Stop: 46486, Start Num: 3

Candidate Starts for EmToTheThree_99:

(Start: 3 @42656 has 159 MA's), (4, 42710), (6, 42740), (21, 43160), (28, 43274), (30, 43316), (34, 43403), (35, 43421), (37, 43439), (50, 43658), (53, 43730), (59, 43808), (60, 43832), (64, 43901), (65, 43904), (66, 44006), (68, 44024), (69, 44057), (70, 44072), (73, 44150), (74, 44153), (81, 44282), (83, 44327), (85, 44462), (88, 44519), (89, 44534), (91, 44546), (93, 44579), (97, 44720), (99, 44804), (124, 45506), (138, 45722), (140, 45764), (141, 45773), (148, 45941), (153, 46058), (154, 46061), (158, 46112), (161, 46199), (165, 46271), (167, 46340),

Gene: EmmaElysia_96 Start: 40214, Stop: 44014, Start Num: 3

Candidate Starts for EmmaElysia_96:

(Start: 3 @40214 has 159 MA's), (4, 40268), (6, 40298), (10, 40367), (21, 40718), (28, 40832), (30, 40874), (34, 40931), (35, 40949), (37, 40967), (50, 41186), (53, 41258), (59, 41336), (60, 41360), (64,

41429), (65, 41432), (66, 41534), (68, 41552), (69, 41585), (70, 41600), (73, 41678), (74, 41681), (81, 41810), (83, 41855), (85, 41990), (88, 42047), (89, 42062), (91, 42074), (93, 42107), (97, 42248), (99, 42332), (124, 43034), (138, 43250), (140, 43292), (141, 43301), (148, 43469), (153, 43586), (154, 43589), (158, 43640), (161, 43727), (165, 43799), (167, 43868),

Gene: Erdmann_97 Start: 41205, Stop: 45035, Start Num: 3

Candidate Starts for Erdmann_97:

(Start: 3 @41205 has 159 MA's), (4, 41259), (6, 41289), (21, 41709), (28, 41823), (30, 41865), (34, 41952), (35, 41970), (37, 41988), (50, 42207), (53, 42279), (59, 42357), (60, 42381), (64, 42450), (65, 42453), (66, 42555), (68, 42573), (69, 42606), (70, 42621), (73, 42699), (74, 42702), (81, 42831), (83, 42876), (85, 43011), (88, 43068), (89, 43083), (91, 43095), (93, 43128), (97, 43269), (99, 43353), (124, 44055), (138, 44271), (140, 44313), (141, 44322), (148, 44490), (153, 44607), (154, 44610), (158, 44661), (161, 44748), (165, 44820), (167, 44889),

Gene: ErnieJ_92 Start: 39232, Stop: 43245, Start Num: 1

Candidate Starts for ErnieJ_92:

(Start: 1 @39232 has 18 MA's), (21, 39934), (28, 40048), (30, 40090), (34, 40165), (35, 40183), (36, 40189), (37, 40201), (41, 40240), (50, 40417), (53, 40489), (59, 40567), (60, 40591), (64, 40660), (65, 40663), (66, 40765), (68, 40783), (69, 40816), (70, 40831), (73, 40909), (74, 40912), (81, 41041), (83, 41086), (85, 41221), (88, 41278), (89, 41293), (91, 41305), (93, 41338), (97, 41479), (99, 41563), (124, 42265), (138, 42481), (140, 42523), (141, 42532), (148, 42700), (153, 42817), (154, 42820), (158, 42871), (161, 42958), (165, 43030), (167, 43099),

Gene: Essence_94 Start: 41201, Stop: 45001, Start Num: 3

Candidate Starts for Essence_94:

(Start: 3 @41201 has 159 MA's), (4, 41255), (6, 41285), (10, 41354), (21, 41705), (28, 41819), (30, 41861), (34, 41918), (35, 41936), (37, 41954), (50, 42173), (53, 42245), (59, 42323), (60, 42347), (64, 42416), (65, 42419), (66, 42521), (68, 42539), (69, 42572), (70, 42587), (73, 42665), (74, 42668), (81, 42797), (83, 42842), (85, 42977), (88, 43034), (89, 43049), (91, 43061), (93, 43094), (97, 43235), (99, 43319), (124, 44021), (138, 44237), (140, 44279), (141, 44288), (148, 44456), (153, 44573), (154, 44576), (158, 44627), (161, 44714), (165, 44786), (167, 44855),

Gene: Ewok_97 Start: 40832, Stop: 44662, Start Num: 3

Candidate Starts for Ewok_97:

(Start: 3 @40832 has 159 MA's), (4, 40886), (6, 40916), (21, 41336), (28, 41450), (30, 41492), (34, 41579), (35, 41597), (37, 41615), (50, 41834), (53, 41906), (59, 41984), (60, 42008), (64, 42077), (65, 42080), (66, 42182), (68, 42200), (69, 42233), (70, 42248), (73, 42326), (74, 42329), (81, 42458), (83, 42503), (85, 42638), (88, 42695), (89, 42710), (91, 42722), (93, 42755), (97, 42896), (99, 42980), (124, 43682), (138, 43898), (140, 43940), (141, 43949), (148, 44117), (153, 44234), (154, 44237), (158, 44288), (161, 44375), (165, 44447), (167, 44516),

Gene: Fixie_93 Start: 39847, Stop: 43677, Start Num: 3

Candidate Starts for Fixie_93:

(Start: 3 @39847 has 159 MA's), (4, 39901), (6, 39931), (10, 40000), (21, 40351), (28, 40465), (30, 40507), (34, 40594), (35, 40612), (37, 40630), (50, 40849), (53, 40921), (59, 40999), (60, 41023), (64, 41092), (65, 41095), (66, 41197), (68, 41215), (69, 41248), (70, 41263), (73, 41341), (74, 41344), (81, 41473), (83, 41518), (85, 41653), (88, 41710), (89, 41725), (91, 41737), (93, 41770), (97, 41911), (99, 41995), (124, 42697), (138, 42913), (140, 42955), (141, 42964), (148, 43132), (153, 43249), (154, 43252), (158, 43303), (161, 43390), (165, 43462), (167, 43531),

Gene: Flabslab_91 Start: 38988, Stop: 43001, Start Num: 1

Candidate Starts for Flabslab_91:

(Start: 1 @38988 has 18 MA's), (21, 39690), (28, 39804), (30, 39846), (34, 39921), (35, 39939), (36, 39945), (37, 39957), (41, 39996), (50, 40173), (53, 40245), (59, 40323), (60, 40347), (64, 40416), (65, 40419), (66, 40521), (68, 40539), (69, 40572), (70, 40587), (73, 40665), (74, 40668), (81, 40797), (83, 40842), (85, 40977), (88, 41034), (89, 41049), (91, 41061), (93, 41094), (97, 41235), (99, 41319), (124, 42021), (138, 42237), (140, 42279), (141, 42288), (148, 42456), (153, 42573), (154, 42576), (158, 42627), (161, 42714), (165, 42786), (167, 42855),

Gene: Fludd_97 Start: 40087, Stop: 43887, Start Num: 3

Candidate Starts for Fludd_97:

(Start: 3 @40087 has 159 MA's), (4, 40141), (6, 40171), (10, 40240), (21, 40591), (28, 40705), (30, 40747), (34, 40804), (35, 40822), (37, 40840), (50, 41059), (53, 41131), (59, 41209), (60, 41233), (64, 41302), (65, 41305), (66, 41407), (68, 41425), (69, 41458), (70, 41473), (73, 41551), (74, 41554), (81, 41683), (83, 41728), (85, 41863), (88, 41920), (89, 41935), (91, 41947), (93, 41980), (97, 42121), (99, 42205), (124, 42907), (138, 43123), (140, 43165), (141, 43174), (148, 43342), (153, 43459), (154, 43462), (158, 43513), (161, 43600), (165, 43672), (167, 43741),

Gene: Fongie_94 Start: 41045, Stop: 44875, Start Num: 3

Candidate Starts for Fongie_94:

(Start: 3 @41045 has 159 MA's), (4, 41099), (6, 41129), (21, 41549), (28, 41663), (30, 41705), (34, 41792), (35, 41810), (37, 41828), (50, 42047), (53, 42119), (59, 42197), (60, 42221), (64, 42290), (65, 42293), (66, 42395), (68, 42413), (69, 42446), (70, 42461), (73, 42539), (74, 42542), (81, 42671), (83, 42716), (85, 42851), (88, 42908), (89, 42923), (91, 42935), (93, 42968), (97, 43109), (99, 43193), (124, 43895), (138, 44111), (140, 44153), (141, 44162), (148, 44330), (153, 44447), (154, 44450), (158, 44501), (161, 44588), (165, 44660), (167, 44729),

Gene: FoxtrotP1_96 Start: 42375, Stop: 46205, Start Num: 3

Candidate Starts for FoxtrotP1_96:

(Start: 3 @42375 has 159 MA's), (4, 42429), (6, 42459), (21, 42879), (28, 42993), (30, 43035), (34, 43122), (35, 43140), (37, 43158), (50, 43377), (53, 43449), (59, 43527), (60, 43551), (64, 43620), (65, 43623), (66, 43725), (68, 43743), (69, 43776), (70, 43791), (73, 43869), (74, 43872), (81, 44001), (83, 44046), (85, 44181), (88, 44238), (89, 44253), (91, 44265), (93, 44298), (97, 44439), (99, 44523), (124, 45225), (138, 45441), (140, 45483), (141, 45492), (148, 45660), (153, 45777), (154, 45780), (158, 45831), (161, 45918), (165, 45990), (167, 46059),

Gene: FrayBell_102 Start: 42654, Stop: 46487, Start Num: 3

Candidate Starts for FrayBell_102:

(Start: 3 @42654 has 159 MA's), (4, 42708), (6, 42738), (21, 43161), (28, 43275), (30, 43317), (34, 43404), (35, 43422), (37, 43440), (50, 43659), (53, 43731), (59, 43809), (60, 43833), (64, 43902), (65, 43905), (66, 44007), (68, 44025), (69, 44058), (70, 44073), (73, 44151), (74, 44154), (81, 44283), (83, 44328), (85, 44463), (88, 44520), (89, 44535), (91, 44547), (93, 44580), (97, 44721), (99, 44805), (124, 45507), (138, 45723), (140, 45765), (141, 45774), (148, 45942), (153, 46059), (154, 46062), (158, 46113), (161, 46200), (165, 46272), (167, 46341),

Gene: FudgeTart_96 Start: 40398, Stop: 44243, Start Num: 3

Candidate Starts for FudgeTart_96:

(Start: 3 @40398 has 159 MA's), (4, 40452), (6, 40482), (21, 40902), (28, 41016), (30, 41058), (34, 41160), (35, 41178), (37, 41196), (50, 41415), (53, 41487), (59, 41565), (60, 41589), (64, 41658), (65, 41661), (66, 41763), (68, 41781), (69, 41814), (70, 41829), (73, 41907), (74, 41910), (81, 42039), (83, 42084), (85, 42219), (88, 42276), (89, 42291), (91, 42303), (93, 42336), (97, 42477), (99, 42561), (124, 43263), (138, 43479), (140, 43521), (141, 43530), (148, 43698), (153, 43815), (154, 43818), (158, 43869), (161, 43956), (165, 44028), (167, 44097),

Gene: Gabriel_98 Start: 40607, Stop: 44407, Start Num: 3

Candidate Starts for Gabriel_98:

(Start: 3 @40607 has 159 MA's), (4, 40661), (6, 40691), (21, 41111), (28, 41225), (30, 41267), (34, 41324), (35, 41342), (37, 41360), (50, 41579), (53, 41651), (59, 41729), (60, 41753), (64, 41822), (65, 41825), (66, 41927), (68, 41945), (69, 41978), (70, 41993), (73, 42071), (74, 42074), (81, 42203), (83, 42248), (85, 42383), (88, 42440), (89, 42455), (91, 42467), (93, 42500), (97, 42641), (99, 42725), (124, 43427), (138, 43643), (140, 43685), (141, 43694), (148, 43862), (153, 43979), (154, 43982), (158, 44033), (161, 44120), (165, 44192), (167, 44261),

Gene: Gamgam_97 Start: 40647, Stop: 44447, Start Num: 3

Candidate Starts for Gamgam_97:

(Start: 3 @40647 has 159 MA's), (4, 40701), (6, 40731), (10, 40800), (21, 41151), (28, 41265), (30, 41307), (34, 41364), (35, 41382), (37, 41400), (50, 41619), (53, 41691), (59, 41769), (60, 41793), (64, 41862), (65, 41865), (66, 41967), (68, 41985), (69, 42018), (70, 42033), (73, 42111), (74, 42114), (81, 42243), (83, 42288), (85, 42423), (88, 42480), (89, 42495), (91, 42507), (93, 42540), (97, 42681), (99, 42765), (124, 43467), (138, 43683), (140, 43725), (141, 43734), (148, 43902), (153, 44019), (154, 44022), (158, 44073), (161, 44160), (165, 44232), (167, 44301),

Gene: Ghost_96 Start: 40647, Stop: 44447, Start Num: 3

Candidate Starts for Ghost_96:

(Start: 3 @40647 has 159 MA's), (4, 40701), (6, 40731), (10, 40800), (21, 41151), (28, 41265), (30, 41307), (34, 41364), (35, 41382), (37, 41400), (50, 41619), (53, 41691), (59, 41769), (60, 41793), (64, 41862), (65, 41865), (66, 41967), (68, 41985), (69, 42018), (70, 42033), (73, 42111), (74, 42114), (81, 42243), (83, 42288), (85, 42423), (88, 42480), (89, 42495), (91, 42507), (93, 42540), (97, 42681), (99, 42765), (124, 43467), (138, 43683), (140, 43725), (141, 43734), (148, 43902), (153, 44019), (154, 44022), (158, 44073), (161, 44160), (165, 44232), (167, 44301),

Gene: Gizmo_100 Start: 42352, Stop: 46182, Start Num: 3

Candidate Starts for Gizmo_100:

(Start: 3 @42352 has 159 MA's), (4, 42406), (6, 42436), (21, 42856), (28, 42970), (30, 43012), (34, 43099), (35, 43117), (37, 43135), (50, 43354), (53, 43426), (59, 43504), (60, 43528), (64, 43597), (65, 43600), (66, 43702), (68, 43720), (69, 43753), (70, 43768), (73, 43846), (74, 43849), (81, 43978), (83, 44023), (85, 44158), (88, 44215), (89, 44230), (91, 44242), (93, 44275), (97, 44416), (99, 44500), (124, 45202), (138, 45418), (140, 45460), (141, 45469), (148, 45637), (153, 45754), (154, 45757), (158, 45808), (161, 45895), (165, 45967), (167, 46036),

Gene: GlutenPhree_98 Start: 40647, Stop: 44447, Start Num: 3

Candidate Starts for GlutenPhree_98:

(Start: 3 @40647 has 159 MA's), (4, 40701), (6, 40731), (10, 40800), (21, 41151), (28, 41265), (30, 41307), (34, 41364), (35, 41382), (37, 41400), (50, 41619), (53, 41691), (59, 41769), (60, 41793), (64, 41862), (65, 41865), (66, 41967), (68, 41985), (69, 42018), (70, 42033), (73, 42111), (74, 42114), (81, 42243), (83, 42288), (85, 42423), (88, 42480), (89, 42495), (91, 42507), (93, 42540), (97, 42681), (99, 42765), (124, 43467), (138, 43683), (140, 43725), (141, 43734), (148, 43902), (153, 44019), (154, 44022), (158, 44073), (161, 44160), (165, 44232), (167, 44301),

Gene: Grasshills_103 Start: 43426, Stop: 47226, Start Num: 3

Candidate Starts for Grasshills_103:

(Start: 2 @43399 has 7 MA's), (Start: 3 @43426 has 159 MA's), (4, 43480), (6, 43510), (10, 43579), (21, 43930), (28, 44044), (30, 44086), (34, 44143), (35, 44161), (37, 44179), (50, 44398), (53, 44470), (59, 44548), (60, 44572), (64, 44641), (65, 44644), (66, 44746), (68, 44764), (69, 44797), (70, 44812), (73, 44890), (74, 44893), (81, 45022), (83, 45067), (85, 45202), (88, 45259), (89, 45274), (91, 45286), (93, 45319), (97, 45460), (99, 45544), (108, 45745), (124, 46246), (138, 46462), (140, 46504), (141, 46513), (148, 46681), (153, 46798), (154, 46801), (158, 46852), (161, 46939), (165, 47011), (167, 47080),

Gene: Greely_98 Start: 42373, Stop: 46023, Start Num: 3

Candidate Starts for Greely_98:

(Start: 3 @42373 has 159 MA's), (5, 42454), (8, 42481), (9, 42496), (12, 42565), (17, 42796), (20, 42859), (22, 42877), (25, 42943), (26, 42982), (27, 43006), (29, 43051), (31, 43090), (34, 43216), (35, 43234), (38, 43255), (40, 43285), (44, 43426), (45, 43435), (46, 43438), (51, 43549), (55, 43603), (56, 43621), (63, 43729), (65, 43759), (69, 43909), (76, 44014), (77, 44059), (79, 44104), (85, 44269), (86, 44281), (87, 44302), (88, 44326), (98, 44527), (115, 44893), (122, 45061), (124, 45193), (128, 45220), (129, 45235), (136, 45328), (137, 45331), (142, 45454), (145, 45481), (156, 45649), (160, 45739), (162, 45772), (164, 45805), (167, 45877),

Gene: Grungle_84 Start: 38029, Stop: 41865, Start Num: 3

Candidate Starts for Grungle_84:

(Start: 3 @38029 has 159 MA's), (4, 38083), (6, 38113), (10, 38182), (21, 38533), (28, 38647), (30, 38689), (34, 38782), (35, 38800), (37, 38818), (50, 39037), (53, 39109), (59, 39187), (60, 39211), (64, 39280), (65, 39283), (66, 39385), (68, 39403), (69, 39436), (70, 39451), (73, 39529), (74, 39532), (81, 39661), (83, 39706), (85, 39841), (88, 39898), (89, 39913), (91, 39925), (93, 39958), (97, 40099), (99, 40183), (124, 40885), (138, 41101), (140, 41143), (141, 41152), (148, 41320), (153, 41437), (154, 41440), (158, 41491), (161, 41578), (165, 41650), (167, 41719),

Gene: Guwapp_96 Start: 40742, Stop: 44572, Start Num: 3

Candidate Starts for Guwapp_96:

(Start: 3 @40742 has 159 MA's), (4, 40796), (6, 40826), (10, 40895), (21, 41246), (28, 41360), (30, 41402), (34, 41489), (35, 41507), (37, 41525), (50, 41744), (53, 41816), (59, 41894), (60, 41918), (64, 41987), (65, 41990), (66, 42092), (68, 42110), (69, 42143), (70, 42158), (73, 42236), (74, 42239), (81, 42368), (83, 42413), (85, 42548), (88, 42605), (89, 42620), (91, 42632), (93, 42665), (97, 42806), (99, 42890), (124, 43592), (138, 43808), (140, 43850), (141, 43859), (148, 44027), (153, 44144), (154, 44147), (158, 44198), (161, 44285), (165, 44357), (167, 44426),

Gene: Halldule_90 Start: 39059, Stop: 42895, Start Num: 3

Candidate Starts for Halldule_90:

(Start: 3 @39059 has 159 MA's), (4, 39113), (6, 39143), (10, 39212), (21, 39563), (28, 39677), (30, 39719), (34, 39812), (35, 39830), (37, 39848), (50, 40067), (53, 40139), (59, 40217), (60, 40241), (64, 40310), (65, 40313), (66, 40415), (68, 40433), (69, 40466), (70, 40481), (73, 40559), (74, 40562), (81, 40691), (83, 40736), (85, 40871), (88, 40928), (89, 40943), (91, 40955), (93, 40988), (97, 41129), (99, 41213), (124, 41915), (138, 42131), (140, 42173), (141, 42182), (148, 42350), (153, 42467), (154, 42470), (158, 42521), (161, 42608), (165, 42680), (167, 42749),

Gene: HyRo_88 Start: 39381, Stop: 43394, Start Num: 1

Candidate Starts for HyRo_88:

(Start: 1 @39381 has 18 MA's), (14, 39849), (21, 40083), (28, 40197), (30, 40239), (34, 40314), (35, 40332), (36, 40338), (37, 40350), (41, 40389), (50, 40566), (53, 40638), (59, 40716), (60, 40740), (64, 40809), (65, 40812), (66, 40914), (68, 40932), (69, 40965), (70, 40980), (73, 41058), (74, 41061), (81, 41190), (83, 41235), (85, 41370), (88, 41427), (91, 41454), (93, 41487), (97, 41628), (99, 41712), (124, 42414), (138, 42630), (140, 42672), (141, 42681), (148, 42849), (153, 42966), (154, 42969), (158, 43020), (161, 43107), (165, 43179), (167, 43248),

Gene: I3_102 Start: 41529, Stop: 45329, Start Num: 3

Candidate Starts for I3_102:

(Start: 2 @41502 has 7 MA's), (Start: 3 @41529 has 159 MA's), (4, 41583), (6, 41613), (10, 41682), (21, 42033), (28, 42147), (30, 42189), (34, 42246), (35, 42264), (37, 42282), (50, 42501), (53, 42573), (59, 42651), (60, 42675), (64, 42744), (65, 42747), (66, 42849), (68, 42867), (69, 42900), (70, 42915), (73, 42993), (74, 42996), (81, 43125), (83, 43170), (85, 43305), (88, 43362), (89, 43377), (91, 43389),

(93, 43422), (97, 43563), (99, 43647), (124, 44349), (138, 44565), (140, 44607), (141, 44616), (148, 44784), (153, 44901), (154, 44904), (158, 44955), (161, 45042), (165, 45114), (167, 45183),

Gene: IkeLoa_90 Start: 39734, Stop: 43564, Start Num: 3

Candidate Starts for IkeLoa_90:

(Start: 2 @39707 has 7 MA's), (Start: 3 @39734 has 159 MA's), (4, 39788), (6, 39818), (10, 39887), (21, 40238), (28, 40352), (30, 40394), (34, 40481), (35, 40499), (37, 40517), (50, 40736), (53, 40808), (59, 40886), (60, 40910), (64, 40979), (65, 40982), (66, 41084), (68, 41102), (69, 41135), (70, 41150), (73, 41228), (74, 41231), (81, 41360), (83, 41405), (85, 41540), (88, 41597), (89, 41612), (91, 41624), (93, 41657), (97, 41798), (99, 41882), (124, 42584), (138, 42800), (140, 42842), (141, 42851), (148, 43019), (153, 43136), (154, 43139), (158, 43190), (161, 43277), (165, 43349), (167, 43418),

Gene: InigoMontoya_98 Start: 40608, Stop: 44408, Start Num: 3

Candidate Starts for InigoMontoya_98:

(Start: 3 @40608 has 159 MA's), (4, 40662), (6, 40692), (10, 40761), (21, 41112), (28, 41226), (30, 41268), (34, 41325), (35, 41343), (37, 41361), (50, 41580), (53, 41652), (59, 41730), (60, 41754), (64, 41823), (65, 41826), (66, 41928), (68, 41946), (69, 41979), (70, 41994), (73, 42072), (74, 42075), (81, 42204), (83, 42249), (85, 42384), (88, 42441), (89, 42456), (91, 42468), (93, 42501), (97, 42642), (99, 42726), (124, 43428), (138, 43644), (140, 43686), (141, 43695), (148, 43863), (153, 43980), (154, 43983), (158, 44034), (161, 44121), (165, 44193), (167, 44262),

Gene: InterFolia_105 Start: 43589, Stop: 47422, Start Num: 3

Candidate Starts for InterFolia_105:

(Start: 2 @43562 has 7 MA's), (Start: 3 @43589 has 159 MA's), (4, 43643), (6, 43673), (21, 44096), (28, 44210), (30, 44252), (34, 44339), (35, 44357), (37, 44375), (50, 44594), (53, 44666), (59, 44744), (60, 44768), (64, 44837), (65, 44840), (66, 44942), (68, 44960), (69, 44993), (70, 45008), (73, 45086), (74, 45089), (81, 45218), (83, 45263), (85, 45398), (88, 45455), (89, 45470), (91, 45482), (93, 45515), (97, 45656), (99, 45740), (124, 46442), (138, 46658), (140, 46700), (141, 46709), (148, 46877), (153, 46994), (154, 46997), (158, 47048), (161, 47135), (165, 47207), (167, 47276),

Gene: Iota_91 Start: 40388, Stop: 44224, Start Num: 3

Candidate Starts for Iota_91:

(Start: 3 @40388 has 159 MA's), (4, 40442), (6, 40472), (10, 40541), (21, 40892), (28, 41006), (30, 41048), (34, 41141), (35, 41159), (37, 41177), (50, 41396), (53, 41468), (59, 41546), (60, 41570), (64, 41639), (65, 41642), (66, 41744), (68, 41762), (69, 41795), (70, 41810), (73, 41888), (74, 41891), (81, 42020), (83, 42065), (85, 42200), (88, 42257), (89, 42272), (91, 42284), (93, 42317), (97, 42458), (99, 42542), (124, 43244), (138, 43460), (140, 43502), (141, 43511), (148, 43679), (153, 43796), (154, 43799), (158, 43850), (161, 43937), (165, 44009), (167, 44078),

Gene: Issimir_95 Start: 41148, Stop: 44978, Start Num: 3

Candidate Starts for Issimir_95:

(Start: 3 @41148 has 159 MA's), (4, 41202), (6, 41232), (21, 41652), (28, 41766), (30, 41808), (34, 41895), (35, 41913), (37, 41931), (50, 42150), (53, 42222), (59, 42300), (60, 42324), (64, 42393), (65, 42396), (66, 42498), (68, 42516), (69, 42549), (70, 42564), (73, 42642), (74, 42645), (81, 42774), (83, 42819), (85, 42954), (88, 43011), (89, 43026), (91, 43038), (93, 43071), (97, 43212), (99, 43296), (124, 43998), (138, 44214), (140, 44256), (141, 44265), (148, 44433), (153, 44550), (154, 44553), (158, 44604), (161, 44691), (165, 44763), (167, 44832),

Gene: Izajani_96 Start: 41385, Stop: 45215, Start Num: 3

Candidate Starts for Izajani_96:

(Start: 2 @41358 has 7 MA's), (Start: 3 @41385 has 159 MA's), (4, 41439), (6, 41469), (10, 41538), (21, 41889), (28, 42003), (30, 42045), (34, 42132), (35, 42150), (37, 42168), (50, 42387), (53, 42459), (59, 42537), (60, 42561), (64, 42630), (65, 42633), (66, 42735), (68, 42753), (69, 42786), (70, 42801),

(73, 42879), (74, 42882), (81, 43011), (83, 43056), (85, 43191), (88, 43248), (89, 43263), (91, 43275), (93, 43308), (97, 43449), (99, 43533), (124, 44235), (138, 44451), (140, 44493), (141, 44502), (148, 44670), (153, 44787), (154, 44790), (158, 44841), (161, 44928), (165, 45000), (167, 45069),

Gene: JPickles_95 Start: 39878, Stop: 43678, Start Num: 3

Candidate Starts for JPickles_95:

(Start: 3 @39878 has 159 MA's), (4, 39932), (6, 39962), (10, 40031), (21, 40382), (28, 40496), (30, 40538), (34, 40595), (35, 40613), (37, 40631), (50, 40850), (53, 40922), (59, 41000), (60, 41024), (64, 41093), (65, 41096), (66, 41198), (68, 41216), (69, 41249), (70, 41264), (73, 41342), (74, 41345), (81, 41474), (83, 41519), (85, 41654), (88, 41711), (89, 41726), (91, 41738), (93, 41771), (97, 41912), (99, 41996), (124, 42698), (138, 42914), (140, 42956), (141, 42965), (148, 43133), (153, 43250), (154, 43253), (158, 43304), (161, 43391), (165, 43463), (167, 43532),

Gene: Janiyra_98 Start: 40480, Stop: 44493, Start Num: 1

Candidate Starts for Janiyra_98:

(Start: 1 @40480 has 18 MA's), (21, 41182), (28, 41296), (30, 41338), (34, 41413), (35, 41431), (36, 41437), (37, 41449), (41, 41488), (50, 41665), (53, 41737), (59, 41815), (60, 41839), (64, 41908), (65, 41911), (66, 42013), (68, 42031), (69, 42064), (70, 42079), (73, 42157), (74, 42160), (81, 42289), (83, 42334), (85, 42469), (88, 42526), (89, 42541), (91, 42553), (93, 42586), (97, 42727), (99, 42811), (124, 43513), (138, 43729), (140, 43771), (141, 43780), (148, 43948), (153, 44065), (154, 44068), (158, 44119), (161, 44206), (165, 44278), (167, 44347),

Gene: JayJay_102 Start: 42673, Stop: 46509, Start Num: 3

Candidate Starts for JayJay_102:

(Start: 2 @42646 has 7 MA's), (Start: 3 @42673 has 159 MA's), (4, 42727), (6, 42757), (10, 42826), (21, 43177), (28, 43291), (30, 43333), (34, 43426), (35, 43444), (37, 43462), (50, 43681), (53, 43753), (59, 43831), (60, 43855), (64, 43924), (65, 43927), (66, 44029), (68, 44047), (69, 44080), (70, 44095), (73, 44173), (74, 44176), (81, 44305), (83, 44350), (85, 44485), (88, 44542), (89, 44557), (91, 44569), (93, 44602), (97, 44743), (99, 44827), (124, 45529), (138, 45745), (140, 45787), (141, 45796), (148, 45964), (153, 46081), (154, 46084), (158, 46135), (161, 46222), (165, 46294), (167, 46363),

Gene: Jaygup_97 Start: 41403, Stop: 45203, Start Num: 3

Candidate Starts for Jaygup_97:

(Start: 3 @41403 has 159 MA's), (4, 41457), (6, 41487), (10, 41556), (21, 41907), (28, 42021), (30, 42063), (34, 42120), (35, 42138), (37, 42156), (50, 42375), (53, 42447), (59, 42525), (60, 42549), (64, 42618), (65, 42621), (66, 42723), (68, 42741), (69, 42774), (70, 42789), (73, 42867), (74, 42870), (81, 42999), (83, 43044), (85, 43179), (88, 43236), (89, 43251), (91, 43263), (93, 43296), (97, 43437), (99, 43521), (124, 44223), (138, 44439), (140, 44481), (141, 44490), (148, 44658), (153, 44775), (154, 44778), (158, 44829), (161, 44916), (165, 44988), (167, 45057),

Gene: Jedediah_100 Start: 41903, Stop: 45736, Start Num: 3

Candidate Starts for Jedediah_100:

(Start: 3 @41903 has 159 MA's), (4, 41957), (6, 41987), (10, 42056), (21, 42410), (28, 42524), (30, 42566), (34, 42653), (35, 42671), (37, 42689), (50, 42908), (53, 42980), (59, 43058), (60, 43082), (64, 43151), (65, 43154), (66, 43256), (68, 43274), (69, 43307), (70, 43322), (73, 43400), (74, 43403), (81, 43532), (83, 43577), (85, 43712), (88, 43769), (89, 43784), (91, 43796), (93, 43829), (97, 43970), (99, 44054), (124, 44756), (138, 44972), (140, 45014), (141, 45023), (148, 45191), (153, 45308), (154, 45311), (158, 45362), (161, 45449), (165, 45521), (167, 45590),

Gene: Jemmno_97 Start: 41353, Stop: 45183, Start Num: 3

Candidate Starts for Jemmno_97:

(Start: 3 @41353 has 159 MA's), (4, 41407), (6, 41437), (10, 41506), (21, 41857), (28, 41971), (30, 42013), (34, 42100), (35, 42118), (37, 42136), (50, 42355), (53, 42427), (59, 42505), (60, 42529), (64,

42598), (65, 42601), (66, 42703), (68, 42721), (69, 42754), (70, 42769), (73, 42847), (74, 42850), (81, 42979), (83, 43024), (85, 43159), (88, 43216), (89, 43231), (91, 43243), (93, 43276), (97, 43417), (99, 43501), (124, 44203), (138, 44419), (140, 44461), (141, 44470), (148, 44638), (153, 44755), (154, 44758), (158, 44809), (161, 44896), (165, 44968), (167, 45037),

Gene: Jessibeth14_95 Start: 40990, Stop: 44820, Start Num: 3

Candidate Starts for Jessibeth14_95:

(Start: 3 @40990 has 159 MA's), (4, 41044), (6, 41074), (21, 41494), (28, 41608), (30, 41650), (34, 41737), (35, 41755), (37, 41773), (50, 41992), (53, 42064), (59, 42142), (60, 42166), (64, 42235), (65, 42238), (66, 42340), (68, 42358), (69, 42391), (70, 42406), (73, 42484), (74, 42487), (81, 42616), (83, 42661), (85, 42796), (88, 42853), (89, 42868), (91, 42880), (93, 42913), (97, 43054), (99, 43138), (124, 43840), (138, 44056), (140, 44098), (141, 44107), (148, 44275), (153, 44392), (154, 44395), (158, 44446), (161, 44533), (165, 44605), (167, 44674),

Gene: Jezreel_96 Start: 41068, Stop: 44898, Start Num: 3

Candidate Starts for Jezreel_96:

(Start: 2 @41041 has 7 MA's), (Start: 3 @41068 has 159 MA's), (4, 41122), (6, 41152), (10, 41221), (21, 41572), (28, 41686), (30, 41728), (34, 41815), (35, 41833), (37, 41851), (50, 42070), (53, 42142), (59, 42220), (60, 42244), (64, 42313), (65, 42316), (66, 42418), (68, 42436), (69, 42469), (70, 42484), (73, 42562), (74, 42565), (81, 42694), (83, 42739), (85, 42874), (88, 42931), (89, 42946), (91, 42958), (93, 42991), (97, 43132), (99, 43216), (124, 43918), (138, 44134), (140, 44176), (141, 44185), (148, 44353), (153, 44470), (154, 44473), (158, 44524), (161, 44611), (165, 44683), (167, 44752),

Gene: JigglyPuff_104 Start: 43562, Stop: 47398, Start Num: 3

Candidate Starts for JigglyPuff_104:

(Start: 3 @43562 has 159 MA's), (4, 43616), (6, 43646), (10, 43715), (21, 44066), (28, 44180), (30, 44222), (34, 44315), (35, 44333), (37, 44351), (50, 44570), (53, 44642), (59, 44720), (60, 44744), (64, 44813), (65, 44816), (66, 44918), (68, 44936), (69, 44969), (70, 44984), (73, 45062), (74, 45065), (81, 45194), (83, 45239), (85, 45374), (88, 45431), (89, 45446), (91, 45458), (93, 45491), (97, 45632), (99, 45716), (124, 46418), (138, 46634), (140, 46676), (141, 46685), (148, 46853), (153, 46970), (154, 46973), (158, 47024), (161, 47111), (165, 47183), (167, 47252),

Gene: JulietS_90 Start: 38910, Stop: 42746, Start Num: 3

Candidate Starts for JulietS_90:

(Start: 3 @38910 has 159 MA's), (4, 38964), (6, 38994), (10, 39063), (21, 39414), (28, 39528), (30, 39570), (34, 39663), (35, 39681), (37, 39699), (50, 39918), (53, 39990), (59, 40068), (60, 40092), (64, 40161), (65, 40164), (66, 40266), (68, 40284), (69, 40317), (70, 40332), (73, 40410), (74, 40413), (81, 40542), (83, 40587), (85, 40722), (88, 40779), (89, 40794), (91, 40806), (93, 40839), (97, 40980), (99, 41064), (124, 41766), (138, 41982), (140, 42024), (141, 42033), (148, 42201), (153, 42318), (154, 42321), (158, 42372), (161, 42459), (165, 42531), (167, 42600),

Gene: JustHall_93 Start: 40555, Stop: 44355, Start Num: 3

Candidate Starts for JustHall_93:

(Start: 3 @40555 has 159 MA's), (4, 40609), (6, 40639), (10, 40708), (21, 41059), (28, 41173), (30, 41215), (34, 41272), (35, 41290), (37, 41308), (50, 41527), (53, 41599), (59, 41677), (60, 41701), (64, 41770), (65, 41773), (66, 41875), (68, 41893), (69, 41926), (70, 41941), (73, 42019), (74, 42022), (81, 42151), (83, 42196), (85, 42331), (88, 42388), (89, 42403), (91, 42415), (93, 42448), (97, 42589), (99, 42673), (124, 43375), (138, 43591), (140, 43633), (141, 43642), (148, 43810), (153, 43927), (154, 43930), (158, 43981), (161, 44068), (165, 44140), (167, 44209),

Gene: Kamryn_96 Start: 41729, Stop: 45559, Start Num: 3

Candidate Starts for Kamryn_96:

(Start: 3 @41729 has 159 MA's), (4, 41783), (6, 41813), (21, 42233), (28, 42347), (30, 42389), (34, 42476), (35, 42494), (37, 42512), (50, 42731), (53, 42803), (59, 42881), (60, 42905), (64, 42974), (65, 42977), (66, 43079), (68, 43097), (69, 43130), (70, 43145), (73, 43223), (74, 43226), (81, 43355), (83, 43400), (85, 43535), (88, 43592), (89, 43607), (91, 43619), (93, 43652), (97, 43793), (99, 43877), (124, 44579), (138, 44795), (140, 44837), (141, 44846), (148, 45014), (153, 45131), (154, 45134), (158, 45185), (161, 45272), (165, 45344), (167, 45413),

Gene: Kboogie_100 Start: 40199, Stop: 43999, Start Num: 3

Candidate Starts for Kboogie_100:

(Start: 3 @40199 has 159 MA's), (4, 40253), (6, 40283), (10, 40352), (21, 40703), (28, 40817), (30, 40859), (34, 40916), (35, 40934), (37, 40952), (50, 41171), (53, 41243), (59, 41321), (60, 41345), (64, 41414), (65, 41417), (66, 41519), (68, 41537), (69, 41570), (70, 41585), (73, 41663), (74, 41666), (81, 41795), (83, 41840), (85, 41975), (88, 42032), (91, 42059), (93, 42092), (97, 42233), (99, 42317), (124, 43019), (138, 43235), (140, 43277), (141, 43286), (148, 43454), (153, 43571), (154, 43574), (158, 43625), (161, 43712), (165, 43784), (167, 43853),

Gene: Khaleesi_95 Start: 40952, Stop: 44782, Start Num: 3

Candidate Starts for Khaleesi_95:

(Start: 3 @40952 has 159 MA's), (4, 41006), (6, 41036), (21, 41456), (28, 41570), (30, 41612), (34, 41699), (35, 41717), (37, 41735), (50, 41954), (53, 42026), (59, 42104), (60, 42128), (64, 42197), (65, 42200), (66, 42302), (68, 42320), (69, 42353), (70, 42368), (73, 42446), (74, 42449), (81, 42578), (83, 42623), (85, 42758), (88, 42815), (89, 42830), (91, 42842), (93, 42875), (97, 43016), (99, 43100), (124, 43802), (138, 44018), (140, 44060), (141, 44069), (148, 44237), (153, 44354), (154, 44357), (158, 44408), (161, 44495), (165, 44567), (167, 44636),

Gene: Koguma_93 Start: 39130, Stop: 42966, Start Num: 3

Candidate Starts for Koguma_93:

(Start: 3 @39130 has 159 MA's), (4, 39184), (6, 39214), (10, 39283), (21, 39634), (28, 39748), (30, 39790), (34, 39883), (35, 39901), (37, 39919), (50, 40138), (53, 40210), (59, 40288), (60, 40312), (64, 40381), (65, 40384), (66, 40486), (68, 40504), (69, 40537), (70, 40552), (73, 40630), (74, 40633), (81, 40762), (83, 40807), (85, 40942), (88, 40999), (89, 41014), (91, 41026), (93, 41059), (97, 41200), (99, 41284), (124, 41986), (138, 42202), (140, 42244), (141, 42253), (148, 42421), (153, 42538), (154, 42541), (158, 42592), (161, 42679), (165, 42751), (167, 42820),

Gene: LRRHood_91 Start: 40949, Stop: 44785, Start Num: 3

Candidate Starts for LRRHood_91:

(Start: 3 @40949 has 159 MA's), (4, 41003), (6, 41033), (10, 41102), (21, 41453), (28, 41567), (30, 41609), (34, 41702), (35, 41720), (37, 41738), (50, 41957), (53, 42029), (59, 42107), (60, 42131), (64, 42200), (65, 42203), (66, 42305), (68, 42323), (69, 42356), (70, 42371), (73, 42449), (74, 42452), (81, 42581), (83, 42626), (85, 42761), (88, 42818), (89, 42833), (91, 42845), (93, 42878), (97, 43019), (99, 43103), (124, 43805), (138, 44021), (140, 44063), (141, 44072), (148, 44240), (153, 44357), (154, 44360), (158, 44411), (161, 44498), (165, 44570), (167, 44639),

Gene: Labradorite_96 Start: 40289, Stop: 44134, Start Num: 3

Candidate Starts for Labradorite_96:

(Start: 3 @40289 has 159 MA's), (4, 40343), (6, 40373), (21, 40793), (28, 40907), (30, 40949), (34, 41051), (35, 41069), (37, 41087), (50, 41306), (53, 41378), (59, 41456), (60, 41480), (64, 41549), (65, 41552), (66, 41654), (68, 41672), (69, 41705), (70, 41720), (73, 41798), (74, 41801), (81, 41930), (83, 41975), (85, 42110), (88, 42167), (89, 42182), (91, 42194), (93, 42227), (97, 42368), (99, 42452), (124, 43154), (138, 43370), (140, 43412), (141, 43421), (148, 43589), (153, 43706), (154, 43709), (158, 43760), (161, 43847), (165, 43919), (167, 43988),

Gene: Latch_97 Start: 40647, Stop: 44447, Start Num: 3

Candidate Starts for Latch_97:

(Start: 3 @40647 has 159 MA's), (4, 40701), (6, 40731), (10, 40800), (21, 41151), (28, 41265), (30, 41307), (34, 41364), (35, 41382), (37, 41400), (50, 41619), (53, 41691), (59, 41769), (60, 41793), (64, 41862), (65, 41865), (66, 41967), (68, 41985), (69, 42018), (70, 42033), (73, 42111), (74, 42114), (81, 42243), (83, 42288), (85, 42423), (88, 42480), (89, 42495), (91, 42507), (93, 42540), (97, 42681), (99, 42765), (124, 43467), (138, 43683), (140, 43725), (141, 43734), (148, 43902), (153, 44019), (154, 44022), (158, 44073), (161, 44160), (165, 44232), (167, 44301),

Gene: Lee7_94 Start: 41586, Stop: 45416, Start Num: 3

Candidate Starts for Lee7_94:

(Start: 3 @41586 has 159 MA's), (4, 41640), (6, 41670), (21, 42090), (28, 42204), (30, 42246), (34, 42333), (35, 42351), (37, 42369), (50, 42588), (53, 42660), (59, 42738), (60, 42762), (64, 42831), (65, 42834), (66, 42936), (68, 42954), (69, 42987), (70, 43002), (73, 43080), (74, 43083), (81, 43212), (83, 43257), (85, 43392), (88, 43449), (89, 43464), (91, 43476), (93, 43509), (97, 43650), (99, 43734), (124, 44436), (138, 44652), (140, 44694), (141, 44703), (148, 44871), (153, 44988), (154, 44991), (158, 45042), (161, 45129), (165, 45201), (167, 45270),

Gene: Lethe_95 Start: 41400, Stop: 45230, Start Num: 3

Candidate Starts for Lethe_95:

(Start: 3 @41400 has 159 MA's), (4, 41454), (6, 41484), (21, 41904), (28, 42018), (30, 42060), (34, 42147), (35, 42165), (37, 42183), (50, 42402), (53, 42474), (59, 42552), (60, 42576), (64, 42645), (65, 42648), (66, 42750), (68, 42768), (69, 42801), (70, 42816), (73, 42894), (74, 42897), (81, 43026), (83, 43071), (85, 43206), (88, 43263), (89, 43278), (91, 43290), (93, 43323), (97, 43464), (99, 43548), (124, 44250), (138, 44466), (140, 44508), (141, 44517), (148, 44685), (153, 44802), (154, 44805), (158, 44856), (161, 44943), (165, 45015), (167, 45084),

Gene: LifeSavor_96 Start: 41335, Stop: 45135, Start Num: 3

Candidate Starts for LifeSavor_96:

(Start: 3 @41335 has 159 MA's), (4, 41389), (6, 41419), (10, 41488), (21, 41839), (28, 41953), (30, 41995), (34, 42052), (35, 42070), (37, 42088), (50, 42307), (53, 42379), (59, 42457), (60, 42481), (64, 42550), (65, 42553), (66, 42655), (68, 42673), (69, 42706), (70, 42721), (73, 42799), (74, 42802), (81, 42931), (83, 42976), (85, 43111), (88, 43168), (89, 43183), (91, 43195), (93, 43228), (97, 43369), (99, 43453), (124, 44155), (138, 44371), (140, 44413), (141, 44422), (148, 44590), (153, 44707), (154, 44710), (158, 44761), (161, 44848), (165, 44920), (167, 44989),

Gene: LinStu_96 Start: 41573, Stop: 45373, Start Num: 3

Candidate Starts for LinStu_96:

(Start: 2 @41546 has 7 MA's), (Start: 3 @41573 has 159 MA's), (4, 41627), (6, 41657), (10, 41726), (21, 42077), (28, 42191), (30, 42233), (34, 42290), (35, 42308), (37, 42326), (50, 42545), (53, 42617), (59, 42695), (60, 42719), (64, 42788), (65, 42791), (66, 42893), (68, 42911), (69, 42944), (70, 42959), (73, 43037), (74, 43040), (81, 43169), (83, 43214), (85, 43349), (88, 43406), (89, 43421), (91, 43433), (93, 43466), (97, 43607), (99, 43691), (124, 44393), (138, 44609), (140, 44651), (141, 44660), (148, 44828), (153, 44945), (154, 44948), (158, 44999), (161, 45086), (165, 45158), (167, 45227),

Gene: Littleton_96 Start: 40524, Stop: 44354, Start Num: 3

Candidate Starts for Littleton_96:

(Start: 3 @40524 has 159 MA's), (4, 40578), (6, 40608), (21, 41028), (28, 41142), (30, 41184), (34, 41271), (35, 41289), (37, 41307), (50, 41526), (53, 41598), (59, 41676), (60, 41700), (64, 41769), (65, 41772), (66, 41874), (68, 41892), (69, 41925), (70, 41940), (73, 42018), (74, 42021), (81, 42150), (83, 42195), (85, 42330), (88, 42387), (89, 42402), (91, 42414), (93, 42447), (97, 42588), (99, 42672), (124, 43374), (138, 43590), (140, 43632), (141, 43641), (148, 43809), (153, 43926), (154, 43929), (158, 43980), (161, 44067), (165, 44139), (167, 44208),

Gene: Loanshark_96 Start: 41205, Stop: 45005, Start Num: 3

Candidate Starts for Loanshark_96:

(Start: 3 @41205 has 159 MA's), (4, 41259), (6, 41289), (21, 41709), (28, 41823), (30, 41865), (34, 41922), (35, 41940), (37, 41958), (50, 42177), (53, 42249), (59, 42327), (60, 42351), (64, 42420), (65, 42423), (66, 42525), (68, 42543), (69, 42576), (70, 42591), (73, 42669), (74, 42672), (81, 42801), (83, 42846), (85, 42981), (88, 43038), (89, 43053), (91, 43065), (93, 43098), (97, 43239), (99, 43323), (124, 44025), (138, 44241), (140, 44283), (141, 44292), (148, 44460), (153, 44577), (154, 44580), (158, 44631), (161, 44718), (165, 44790), (167, 44859),

Gene: LolaVinca_98 Start: 42311, Stop: 46141, Start Num: 3

Candidate Starts for LolaVinca_98:

(Start: 3 @42311 has 159 MA's), (4, 42365), (6, 42395), (21, 42815), (28, 42929), (30, 42971), (34, 43058), (35, 43076), (37, 43094), (50, 43313), (53, 43385), (59, 43463), (60, 43487), (64, 43556), (65, 43559), (66, 43661), (68, 43679), (69, 43712), (70, 43727), (73, 43805), (74, 43808), (81, 43937), (83, 43982), (85, 44117), (88, 44174), (89, 44189), (91, 44201), (93, 44234), (97, 44375), (99, 44459), (124, 45161), (138, 45377), (140, 45419), (141, 45428), (148, 45596), (153, 45713), (154, 45716), (158, 45767), (161, 45854), (165, 45926), (167, 45995),

Gene: LookingGlass_97 Start: 41478, Stop: 45308, Start Num: 3

Candidate Starts for LookingGlass_97:

(Start: 2 @41451 has 7 MA's), (Start: 3 @41478 has 159 MA's), (4, 41532), (6, 41562), (10, 41631), (21, 41982), (28, 42096), (30, 42138), (34, 42225), (35, 42243), (37, 42261), (50, 42480), (53, 42552), (59, 42630), (60, 42654), (64, 42723), (65, 42726), (66, 42828), (68, 42846), (69, 42879), (70, 42894), (73, 42972), (74, 42975), (81, 43104), (83, 43149), (85, 43284), (88, 43341), (89, 43356), (91, 43368), (93, 43401), (97, 43542), (99, 43626), (124, 44328), (138, 44544), (140, 44586), (141, 44595), (148, 44763), (153, 44880), (154, 44883), (158, 44934), (161, 45021), (165, 45093), (167, 45162),

Gene: LordLeafolot_102 Start: 43302, Stop: 47105, Start Num: 3

Candidate Starts for LordLeafolot_102:

(Start: 3 @43302 has 159 MA's), (4, 43356), (6, 43386), (21, 43809), (28, 43923), (30, 43965), (34, 44022), (35, 44040), (37, 44058), (50, 44277), (53, 44349), (59, 44427), (60, 44451), (64, 44520), (65, 44523), (66, 44625), (68, 44643), (69, 44676), (70, 44691), (73, 44769), (74, 44772), (81, 44901), (83, 44946), (85, 45081), (88, 45138), (89, 45153), (91, 45165), (93, 45198), (97, 45339), (99, 45423), (124, 46125), (138, 46341), (140, 46383), (141, 46392), (148, 46560), (153, 46677), (154, 46680), (158, 46731), (161, 46818), (165, 46890), (167, 46959),

Gene: Lukilu_87 Start: 40816, Stop: 44646, Start Num: 3

Candidate Starts for Lukilu_87:

(Start: 3 @40816 has 159 MA's), (4, 40870), (6, 40900), (21, 41320), (28, 41434), (30, 41476), (34, 41563), (35, 41581), (37, 41599), (50, 41818), (53, 41890), (59, 41968), (60, 41992), (64, 42061), (65, 42064), (66, 42166), (68, 42184), (69, 42217), (70, 42232), (73, 42310), (74, 42313), (81, 42442), (83, 42487), (85, 42622), (88, 42679), (89, 42694), (91, 42706), (93, 42739), (97, 42880), (99, 42964), (124, 43666), (138, 43882), (140, 43924), (141, 43933), (148, 44101), (153, 44218), (154, 44221), (158, 44272), (161, 44359), (165, 44431), (167, 44500),

Gene: Lunareta_95 Start: 42831, Stop: 46661, Start Num: 3

Candidate Starts for Lunareta_95:

(Start: 3 @42831 has 159 MA's), (4, 42885), (6, 42915), (10, 42984), (21, 43335), (28, 43449), (30, 43491), (34, 43578), (35, 43596), (37, 43614), (50, 43833), (53, 43905), (59, 43983), (60, 44007), (64, 44076), (65, 44079), (66, 44181), (68, 44199), (69, 44232), (70, 44247), (73, 44325), (74, 44328), (81, 44457), (83, 44502), (85, 44637), (88, 44694), (89, 44709), (91, 44721), (93, 44754), (97, 44895), (99, 44979), (124, 45681), (138, 45897), (140, 45939), (141, 45948), (148, 46116), (153, 46233), (154, 46236), (158, 46287), (161, 46374), (165, 46446), (167, 46515),

Gene: Maby2021_96 Start: 41050, Stop: 44880, Start Num: 3

Candidate Starts for Maby2021_96:

(Start: 2 @41023 has 7 MA's), (Start: 3 @41050 has 159 MA's), (4, 41104), (6, 41134), (10, 41203), (21, 41554), (28, 41668), (30, 41710), (34, 41797), (35, 41815), (37, 41833), (50, 42052), (53, 42124), (59, 42202), (60, 42226), (64, 42295), (65, 42298), (66, 42400), (68, 42418), (69, 42451), (70, 42466), (73, 42544), (74, 42547), (81, 42676), (83, 42721), (85, 42856), (88, 42913), (89, 42928), (91, 42940), (93, 42973), (97, 43114), (99, 43198), (124, 43900), (138, 44116), (140, 44158), (141, 44167), (148, 44335), (153, 44452), (154, 44455), (158, 44506), (161, 44593), (165, 44665), (167, 44734),

Gene: Mangeria_96 Start: 41167, Stop: 44985, Start Num: 3

Candidate Starts for Mangeria_96:

(Start: 3 @41167 has 159 MA's), (4, 41221), (6, 41251), (21, 41671), (28, 41785), (30, 41827), (34, 41902), (35, 41920), (37, 41938), (50, 42157), (53, 42229), (59, 42307), (60, 42331), (64, 42400), (65, 42403), (66, 42505), (68, 42523), (69, 42556), (70, 42571), (73, 42649), (74, 42652), (81, 42781), (83, 42826), (85, 42961), (88, 43018), (89, 43033), (91, 43045), (93, 43078), (97, 43219), (99, 43303), (124, 44005), (138, 44221), (140, 44263), (141, 44272), (148, 44440), (153, 44557), (154, 44560), (158, 44611), (161, 44698), (165, 44770), (167, 44839),

Gene: Matsumoto_95 Start: 40930, Stop: 44763, Start Num: 3

Candidate Starts for Matsumoto_95:

(Start: 3 @40930 has 159 MA's), (4, 40984), (6, 41014), (21, 41437), (28, 41551), (30, 41593), (34, 41680), (35, 41698), (37, 41716), (50, 41935), (53, 42007), (59, 42085), (60, 42109), (64, 42178), (65, 42181), (66, 42283), (68, 42301), (69, 42334), (70, 42349), (73, 42427), (74, 42430), (81, 42559), (83, 42604), (85, 42739), (88, 42796), (89, 42811), (91, 42823), (93, 42856), (97, 42997), (99, 43081), (124, 43783), (138, 43999), (140, 44041), (141, 44050), (148, 44218), (153, 44335), (154, 44338), (158, 44389), (161, 44476), (165, 44548), (167, 44617),

Gene: Maturis_94 Start: 41323, Stop: 45159, Start Num: 3

Candidate Starts for Maturis_94:

(Start: 2 @41296 has 7 MA's), (Start: 3 @41323 has 159 MA's), (4, 41377), (6, 41407), (10, 41476), (21, 41827), (28, 41941), (30, 41983), (34, 42076), (35, 42094), (37, 42112), (50, 42331), (53, 42403), (59, 42481), (60, 42505), (64, 42574), (65, 42577), (66, 42679), (68, 42697), (69, 42730), (70, 42745), (73, 42823), (74, 42826), (81, 42955), (83, 43000), (85, 43135), (88, 43192), (89, 43207), (91, 43219), (93, 43252), (97, 43393), (99, 43477), (124, 44179), (138, 44395), (140, 44437), (141, 44446), (148, 44614), (153, 44731), (154, 44734), (158, 44785), (161, 44872), (165, 44944), (167, 45013),

Gene: McGee_98 Start: 39831, Stop: 43631, Start Num: 3

Candidate Starts for McGee_98:

(Start: 3 @39831 has 159 MA's), (4, 39885), (6, 39915), (10, 39984), (21, 40335), (28, 40449), (30, 40491), (34, 40548), (35, 40566), (37, 40584), (50, 40803), (53, 40875), (59, 40953), (60, 40977), (64, 41046), (65, 41049), (66, 41151), (68, 41169), (69, 41202), (70, 41217), (73, 41295), (74, 41298), (81, 41427), (83, 41472), (85, 41607), (88, 41664), (89, 41679), (91, 41691), (93, 41724), (97, 41865), (99, 41949), (124, 42651), (138, 42867), (140, 42909), (141, 42918), (148, 43086), (153, 43203), (154, 43206), (158, 43257), (161, 43344), (165, 43416), (167, 43485),

Gene: McWolfish_94 Start: 40775, Stop: 44605, Start Num: 3

Candidate Starts for McWolfish_94:

(Start: 2 @40748 has 7 MA's), (Start: 3 @40775 has 159 MA's), (4, 40829), (6, 40859), (10, 40928), (11, 40952), (21, 41279), (28, 41393), (30, 41435), (34, 41522), (35, 41540), (37, 41558), (50, 41777), (53, 41849), (59, 41927), (60, 41951), (64, 42020), (65, 42023), (66, 42125), (68, 42143), (69, 42176), (70, 42191), (73, 42269), (74, 42272), (81, 42401), (83, 42446), (85, 42581), (88, 42638), (89, 42653), (91, 42665), (93, 42698), (97, 42839), (99, 42923), (124, 43625), (138, 43841), (140, 43883), (141,

43892), (148, 44060), (153, 44177), (154, 44180), (158, 44231), (161, 44318), (165, 44390), (167, 44459),

Gene: Megamind_95 Start: 40871, Stop: 44701, Start Num: 3

Candidate Starts for Megamind_95:

(Start: 3 @40871 has 159 MA's), (4, 40925), (6, 40955), (21, 41375), (28, 41489), (30, 41531), (34, 41618), (35, 41636), (37, 41654), (50, 41873), (53, 41945), (59, 42023), (60, 42047), (64, 42116), (65, 42119), (66, 42221), (68, 42239), (69, 42272), (70, 42287), (73, 42365), (74, 42368), (81, 42497), (83, 42542), (85, 42677), (88, 42734), (89, 42749), (91, 42761), (93, 42794), (97, 42935), (99, 43019), (124, 43721), (138, 43937), (140, 43979), (141, 43988), (148, 44156), (153, 44273), (154, 44276), (158, 44327), (161, 44414), (165, 44486), (167, 44555),

Gene: Melpomini_90 Start: 38395, Stop: 42408, Start Num: 1

Candidate Starts for Melpomini_90:

(Start: 1 @38395 has 18 MA's), (21, 39097), (28, 39211), (30, 39253), (34, 39328), (35, 39346), (36, 39352), (37, 39364), (41, 39403), (50, 39580), (53, 39652), (59, 39730), (60, 39754), (64, 39823), (65, 39826), (66, 39928), (68, 39946), (69, 39979), (70, 39994), (73, 40072), (74, 40075), (81, 40204), (83, 40249), (85, 40384), (88, 40441), (89, 40456), (91, 40468), (93, 40501), (97, 40642), (99, 40726), (124, 41428), (138, 41644), (140, 41686), (141, 41695), (148, 41863), (153, 41980), (154, 41983), (158, 42034), (161, 42121), (165, 42193), (167, 42262),

Gene: MikeLiesIn_97 Start: 41218, Stop: 45048, Start Num: 3

Candidate Starts for MikeLiesIn_97:

(Start: 3 @41218 has 159 MA's), (4, 41272), (6, 41302), (21, 41722), (28, 41836), (30, 41878), (34, 41965), (35, 41983), (37, 42001), (50, 42220), (53, 42292), (59, 42370), (60, 42394), (64, 42463), (65, 42466), (66, 42568), (68, 42586), (69, 42619), (70, 42634), (73, 42712), (74, 42715), (81, 42844), (83, 42889), (85, 43024), (88, 43081), (89, 43096), (91, 43108), (93, 43141), (97, 43282), (99, 43366), (124, 44068), (138, 44284), (140, 44326), (141, 44335), (148, 44503), (153, 44620), (154, 44623), (158, 44674), (161, 44761), (165, 44833), (167, 44902),

Gene: Mikro_94 Start: 42293, Stop: 46123, Start Num: 3

Candidate Starts for Mikro_94:

(Start: 2 @42266 has 7 MA's), (Start: 3 @42293 has 159 MA's), (4, 42347), (6, 42377), (10, 42446), (21, 42797), (28, 42911), (30, 42953), (34, 43040), (35, 43058), (37, 43076), (50, 43295), (53, 43367), (59, 43445), (60, 43469), (64, 43538), (65, 43541), (66, 43643), (68, 43661), (69, 43694), (70, 43709), (73, 43787), (74, 43790), (81, 43919), (83, 43964), (85, 44099), (88, 44156), (89, 44171), (91, 44183), (93, 44216), (97, 44357), (99, 44441), (124, 45143), (138, 45359), (140, 45401), (141, 45410), (148, 45578), (153, 45695), (154, 45698), (158, 45749), (161, 45836), (165, 45908), (167, 45977),

Gene: MoMoMixon_97 Start: 40943, Stop: 44773, Start Num: 3

Candidate Starts for MoMoMixon_97:

(Start: 3 @40943 has 159 MA's), (4, 40997), (6, 41027), (21, 41447), (28, 41561), (30, 41603), (34, 41690), (35, 41708), (37, 41726), (50, 41945), (53, 42017), (59, 42095), (60, 42119), (64, 42188), (65, 42191), (66, 42293), (68, 42311), (69, 42344), (70, 42359), (73, 42437), (74, 42440), (81, 42569), (83, 42614), (85, 42749), (88, 42806), (89, 42821), (91, 42833), (93, 42866), (97, 43007), (99, 43091), (124, 43793), (138, 44009), (140, 44051), (141, 44060), (148, 44228), (153, 44345), (154, 44348), (158, 44399), (161, 44486), (165, 44558), (167, 44627),

Gene: Moby_87 Start: 36470, Stop: 40483, Start Num: 1

Candidate Starts for Moby_87:

(Start: 1 @36470 has 18 MA's), (21, 37172), (28, 37286), (30, 37328), (34, 37403), (35, 37421), (36, 37427), (37, 37439), (41, 37478), (50, 37655), (53, 37727), (59, 37805), (60, 37829), (64, 37898), (65, 37901), (66, 38003), (68, 38021), (69, 38054), (70, 38069), (73, 38147), (74, 38150), (81, 38279), (83,

38324), (85, 38459), (88, 38516), (91, 38543), (93, 38576), (97, 38717), (99, 38801), (124, 39503), (138, 39719), (140, 39761), (141, 39770), (148, 39938), (153, 40055), (154, 40058), (158, 40109), (161, 40196), (165, 40268), (167, 40337),

Gene: Moiqah_87 Start: 36470, Stop: 40483, Start Num: 1

Candidate Starts for Moiqah_87:

(Start: 1 @36470 has 18 MA's), (21, 37172), (28, 37286), (30, 37328), (34, 37403), (35, 37421), (36, 37427), (37, 37439), (41, 37478), (50, 37655), (53, 37727), (59, 37805), (60, 37829), (64, 37898), (65, 37901), (66, 38003), (68, 38021), (69, 38054), (70, 38069), (73, 38147), (74, 38150), (81, 38279), (83, 38324), (85, 38459), (88, 38516), (91, 38543), (93, 38576), (97, 38717), (99, 38801), (124, 39503), (138, 39719), (140, 39761), (141, 39770), (148, 39938), (153, 40055), (154, 40058), (158, 40109), (161, 40196), (165, 40268), (167, 40337),

Gene: Momo_96 Start: 40647, Stop: 44447, Start Num: 3

Candidate Starts for Momo_96:

(Start: 3 @40647 has 159 MA's), (4, 40701), (6, 40731), (10, 40800), (21, 41151), (28, 41265), (30, 41307), (34, 41364), (35, 41382), (37, 41400), (50, 41619), (53, 41691), (59, 41769), (60, 41793), (64, 41862), (65, 41865), (66, 41967), (68, 41985), (69, 42018), (70, 42033), (73, 42111), (74, 42114), (81, 42243), (83, 42288), (85, 42423), (88, 42480), (89, 42495), (91, 42507), (93, 42540), (97, 42681), (99, 42765), (124, 43467), (138, 43683), (140, 43725), (141, 43734), (148, 43902), (153, 44019), (154, 44022), (158, 44073), (161, 44160), (165, 44232), (167, 44301),

Gene: Montpel_95 Start: 42831, Stop: 46661, Start Num: 3

Candidate Starts for Montpel_95:

(Start: 3 @42831 has 159 MA's), (4, 42885), (6, 42915), (10, 42984), (21, 43335), (28, 43449), (30, 43491), (34, 43578), (35, 43596), (37, 43614), (50, 43833), (53, 43905), (59, 43983), (60, 44007), (64, 44076), (65, 44079), (66, 44181), (68, 44199), (69, 44232), (70, 44247), (73, 44325), (74, 44328), (81, 44457), (83, 44502), (85, 44637), (88, 44694), (89, 44709), (91, 44721), (93, 44754), (97, 44895), (99, 44979), (124, 45681), (138, 45897), (140, 45939), (141, 45948), (148, 46116), (153, 46233), (154, 46236), (158, 46287), (161, 46374), (165, 46446), (167, 46515),

Gene: Morizzled23_96 Start: 39915, Stop: 43928, Start Num: 1

Candidate Starts for Morizzled23_96:

(Start: 1 @39915 has 18 MA's), (21, 40617), (28, 40731), (30, 40773), (34, 40848), (35, 40866), (36, 40872), (37, 40884), (41, 40923), (50, 41100), (53, 41172), (59, 41250), (60, 41274), (64, 41343), (65, 41346), (66, 41448), (68, 41466), (69, 41499), (70, 41514), (73, 41592), (74, 41595), (81, 41724), (83, 41769), (85, 41904), (88, 41961), (91, 41988), (93, 42021), (97, 42162), (99, 42246), (124, 42948), (138, 43164), (140, 43206), (141, 43215), (148, 43383), (153, 43500), (154, 43503), (158, 43554), (161, 43641), (165, 43713), (167, 43782),

Gene: Myrna_96 Start: 43197, Stop: 46664, Start Num: 3

Candidate Starts for Myrna_96:

(Start: 3 @43197 has 159 MA's), (5, 43278), (8, 43305), (9, 43320), (10, 43335), (17, 43620), (22, 43698), (24, 43758), (25, 43803), (27, 43872), (29, 43917), (31, 43956), (32, 44025), (38, 44112), (39, 44133), (44, 44274), (46, 44286), (48, 44352), (49, 44355), (51, 44397), (55, 44451), (56, 44469), (65, 44607), (67, 44715), (69, 44757), (72, 44820), (75, 44859), (76, 44862), (79, 44943), (80, 44946), (85, 45111), (87, 45144), (88, 45168), (90, 45186), (102, 45408), (109, 45555), (124, 45837), (128, 45861), (129, 45876), (132, 45897), (134, 45930), (136, 45969), (137, 45972), (145, 46122), (146, 46155), (147, 46164), (150, 46230), (152, 46269), (156, 46290), (162, 46413), (164, 46446), (167, 46518), (170, 46569),

Gene: Naija_96 Start: 40647, Stop: 44447, Start Num: 3

Candidate Starts for Naija_96:

(Start: 3 @40647 has 159 MA's), (4, 40701), (6, 40731), (10, 40800), (21, 41151), (28, 41265), (30, 41307), (34, 41364), (35, 41382), (37, 41400), (50, 41619), (53, 41691), (59, 41769), (60, 41793), (64, 41862), (65, 41865), (66, 41967), (68, 41985), (69, 42018), (70, 42033), (73, 42111), (74, 42114), (81, 42243), (83, 42288), (85, 42423), (88, 42480), (89, 42495), (91, 42507), (93, 42540), (97, 42681), (99, 42765), (124, 43467), (138, 43683), (140, 43725), (141, 43734), (148, 43902), (153, 44019), (154, 44022), (158, 44073), (161, 44160), (165, 44232), (167, 44301),

Gene: Napoleon13_92 Start: 39013, Stop: 42843, Start Num: 3

Candidate Starts for Napoleon13_92:

(Start: 3 @39013 has 159 MA's), (4, 39067), (6, 39097), (21, 39517), (28, 39631), (30, 39673), (34, 39760), (35, 39778), (37, 39796), (50, 40015), (53, 40087), (59, 40165), (60, 40189), (64, 40258), (65, 40261), (66, 40363), (68, 40381), (69, 40414), (70, 40429), (73, 40507), (74, 40510), (81, 40639), (83, 40684), (85, 40819), (88, 40876), (89, 40891), (91, 40903), (93, 40936), (97, 41077), (99, 41161), (124, 41863), (138, 42079), (140, 42121), (141, 42130), (148, 42298), (153, 42415), (154, 42418), (158, 42469), (161, 42556), (165, 42628), (167, 42697),

Gene: Nappy_99 Start: 42373, Stop: 46209, Start Num: 3

Candidate Starts for Nappy_99:

(Start: 3 @42373 has 159 MA's), (4, 42427), (6, 42457), (10, 42526), (21, 42877), (28, 42991), (30, 43033), (34, 43126), (35, 43144), (37, 43162), (50, 43381), (53, 43453), (59, 43531), (60, 43555), (64, 43624), (65, 43627), (66, 43729), (68, 43747), (69, 43780), (70, 43795), (73, 43873), (74, 43876), (81, 44005), (83, 44050), (85, 44185), (88, 44242), (89, 44257), (91, 44269), (93, 44302), (97, 44443), (99, 44527), (124, 45229), (138, 45445), (140, 45487), (141, 45496), (148, 45664), (153, 45781), (154, 45784), (158, 45835), (161, 45922), (165, 45994), (167, 46063),

Gene: Naval22_104 Start: 42809, Stop: 46639, Start Num: 3

Candidate Starts for Naval22_104:

(Start: 3 @42809 has 159 MA's), (4, 42863), (6, 42893), (21, 43313), (28, 43427), (30, 43469), (34, 43556), (35, 43574), (37, 43592), (50, 43811), (53, 43883), (59, 43961), (60, 43985), (64, 44054), (65, 44057), (66, 44159), (68, 44177), (69, 44210), (70, 44225), (73, 44303), (74, 44306), (81, 44435), (83, 44480), (85, 44615), (88, 44672), (89, 44687), (91, 44699), (93, 44732), (97, 44873), (99, 44957), (124, 45659), (138, 45875), (140, 45917), (141, 45926), (148, 46094), (153, 46211), (154, 46214), (158, 46265), (161, 46352), (165, 46424), (167, 46493),

Gene: NedWong_97 Start: 41205, Stop: 45035, Start Num: 3

Candidate Starts for NedWong_97:

(Start: 3 @41205 has 159 MA's), (4, 41259), (6, 41289), (21, 41709), (28, 41823), (30, 41865), (34, 41952), (35, 41970), (37, 41988), (50, 42207), (53, 42279), (59, 42357), (60, 42381), (64, 42450), (65, 42453), (66, 42555), (68, 42573), (69, 42606), (70, 42621), (73, 42699), (74, 42702), (81, 42831), (83, 42876), (85, 43011), (88, 43068), (89, 43083), (91, 43095), (93, 43128), (97, 43269), (99, 43353), (124, 44055), (138, 44271), (140, 44313), (141, 44322), (148, 44490), (153, 44607), (154, 44610), (158, 44661), (161, 44748), (165, 44820), (167, 44889),

Gene: Ngannou_93 Start: 39629, Stop: 43429, Start Num: 3

Candidate Starts for Ngannou_93:

(Start: 3 @39629 has 159 MA's), (4, 39683), (6, 39713), (10, 39782), (21, 40133), (28, 40247), (30, 40289), (34, 40346), (35, 40364), (37, 40382), (50, 40601), (53, 40673), (59, 40751), (60, 40775), (64, 40844), (65, 40847), (66, 40949), (68, 40967), (69, 41000), (70, 41015), (73, 41093), (74, 41096), (81, 41225), (83, 41270), (85, 41405), (88, 41462), (89, 41477), (91, 41489), (93, 41522), (97, 41663), (99, 41747), (124, 42449), (138, 42665), (140, 42707), (141, 42716), (148, 42884), (153, 43001), (154, 43004), (158, 43055), (161, 43142), (165, 43214), (167, 43283),

Gene: Nidhogg_97 Start: 41196, Stop: 45023, Start Num: 2

Candidate Starts for Nidhogg_97:

(Start: 2 @41196 has 7 MA's), (Start: 3 @41223 has 159 MA's), (4, 41277), (6, 41307), (10, 41376), (21, 41727), (28, 41841), (30, 41883), (34, 41940), (35, 41958), (37, 41976), (50, 42195), (53, 42267), (59, 42345), (60, 42369), (64, 42438), (65, 42441), (66, 42543), (68, 42561), (69, 42594), (70, 42609), (73, 42687), (74, 42690), (81, 42819), (83, 42864), (85, 42999), (88, 43056), (89, 43071), (91, 43083), (93, 43116), (97, 43257), (99, 43341), (124, 44043), (138, 44259), (140, 44301), (141, 44310), (148, 44478), (153, 44595), (154, 44598), (158, 44649), (161, 44736), (165, 44808), (167, 44877),

Gene: NoodleTree_104 Start: 42400, Stop: 46245, Start Num: 3

Candidate Starts for NoodleTree_104:

(Start: 2 @42373 has 7 MA's), (Start: 3 @42400 has 159 MA's), (4, 42454), (6, 42484), (10, 42553), (21, 42904), (28, 43018), (30, 43060), (34, 43162), (35, 43180), (37, 43198), (50, 43417), (53, 43489), (59, 43567), (60, 43591), (64, 43660), (65, 43663), (66, 43765), (68, 43783), (69, 43816), (70, 43831), (73, 43909), (74, 43912), (81, 44041), (83, 44086), (85, 44221), (88, 44278), (89, 44293), (91, 44305), (93, 44338), (97, 44479), (99, 44563), (124, 45265), (138, 45481), (140, 45523), (141, 45532), (148, 45700), (153, 45817), (154, 45820), (158, 45871), (161, 45958), (165, 46030), (167, 46099),

Gene: Norm_97 Start: 41978, Stop: 45808, Start Num: 3

Candidate Starts for Norm_97:

(Start: 3 @41978 has 159 MA's), (4, 42032), (6, 42062), (21, 42482), (28, 42596), (30, 42638), (34, 42725), (35, 42743), (37, 42761), (50, 42980), (53, 43052), (59, 43130), (60, 43154), (64, 43223), (65, 43226), (66, 43328), (68, 43346), (69, 43379), (70, 43394), (73, 43472), (74, 43475), (81, 43604), (83, 43649), (85, 43784), (88, 43841), (89, 43856), (91, 43868), (93, 43901), (97, 44042), (99, 44126), (124, 44828), (138, 45044), (140, 45086), (141, 45095), (148, 45263), (153, 45380), (154, 45383), (158, 45434), (161, 45521), (165, 45593), (167, 45662),

Gene: NuevoMundo_102 Start: 43330, Stop: 47160, Start Num: 3

Candidate Starts for NuevoMundo_102:

(Start: 2 @43303 has 7 MA's), (Start: 3 @43330 has 159 MA's), (4, 43384), (6, 43414), (10, 43483), (21, 43834), (28, 43948), (30, 43990), (34, 44077), (35, 44095), (37, 44113), (50, 44332), (53, 44404), (59, 44482), (60, 44506), (64, 44575), (65, 44578), (66, 44680), (68, 44698), (69, 44731), (70, 44746), (73, 44824), (74, 44827), (81, 44956), (83, 45001), (85, 45136), (88, 45193), (89, 45208), (91, 45220), (93, 45253), (97, 45394), (99, 45478), (124, 46180), (138, 46396), (140, 46438), (141, 46447), (148, 46615), (153, 46732), (154, 46735), (158, 46786), (161, 46873), (165, 46945), (167, 47014),

Gene: OrediggerDelux_94 Start: 41975, Stop: 45805, Start Num: 3

Candidate Starts for OrediggerDelux_94:

(Start: 3 @41975 has 159 MA's), (4, 42029), (6, 42059), (21, 42479), (28, 42593), (30, 42635), (34, 42722), (35, 42740), (37, 42758), (50, 42977), (53, 43049), (59, 43127), (60, 43151), (64, 43220), (65, 43223), (66, 43325), (68, 43343), (69, 43376), (70, 43391), (73, 43469), (74, 43472), (81, 43601), (83, 43646), (85, 43781), (88, 43838), (89, 43853), (91, 43865), (93, 43898), (97, 44039), (99, 44123), (124, 44825), (138, 45041), (140, 45083), (141, 45092), (148, 45260), (153, 45377), (154, 45380), (158, 45431), (161, 45518), (165, 45590), (167, 45659),

Gene: ParkTD_97 Start: 41201, Stop: 45031, Start Num: 3

Candidate Starts for ParkTD_97:

(Start: 3 @41201 has 159 MA's), (4, 41255), (6, 41285), (21, 41705), (28, 41819), (30, 41861), (34, 41948), (35, 41966), (37, 41984), (50, 42203), (53, 42275), (59, 42353), (60, 42377), (64, 42446), (65, 42449), (66, 42551), (68, 42569), (69, 42602), (70, 42617), (73, 42695), (74, 42698), (81, 42827), (83, 42872), (85, 43007), (88, 43064), (89, 43079), (91, 43091), (93, 43124), (97, 43265), (99, 43349), (124, 44051), (138, 44267), (140, 44309), (141, 44318), (148, 44486), (153, 44603), (154, 44606), (158, 44657), (161, 44744), (165, 44816), (167, 44885),

Gene: Patter_97 Start: 40664, Stop: 44464, Start Num: 3

Candidate Starts for Patter_97:

(Start: 3 @40664 has 159 MA's), (4, 40718), (6, 40748), (10, 40817), (21, 41168), (28, 41282), (30, 41324), (34, 41381), (35, 41399), (37, 41417), (50, 41636), (53, 41708), (59, 41786), (60, 41810), (64, 41879), (65, 41882), (66, 41984), (68, 42002), (69, 42035), (70, 42050), (73, 42128), (74, 42131), (81, 42260), (83, 42305), (85, 42440), (88, 42497), (89, 42512), (91, 42524), (93, 42557), (97, 42698), (99, 42782), (124, 43484), (138, 43700), (140, 43742), (141, 43751), (148, 43919), (153, 44036), (154, 44039), (158, 44090), (161, 44177), (165, 44249), (167, 44318),

Gene: Phabba_101 Start: 42154, Stop: 45843, Start Num: 3

Candidate Starts for Phabba_101:

(Start: 3 @42154 has 159 MA's), (8, 42262), (9, 42277), (12, 42346), (17, 42577), (22, 42658), (25, 42724), (27, 42787), (29, 42832), (32, 42940), (34, 42997), (35, 43015), (38, 43036), (44, 43213), (45, 43222), (46, 43225), (51, 43336), (55, 43390), (56, 43408), (63, 43516), (65, 43546), (69, 43696), (76, 43801), (77, 43846), (79, 43891), (85, 44056), (87, 44089), (90, 44131), (91, 44140), (94, 44236), (98, 44314), (105, 44497), (115, 44671), (118, 44767), (121, 44812), (124, 44959), (128, 44986), (129, 45001), (132, 45022), (136, 45094), (137, 45097), (142, 45220), (145, 45247), (152, 45448), (156, 45469), (162, 45592), (164, 45625), (167, 45697),

Gene: PharkleMinkus_101 Start: 42654, Stop: 46487, Start Num: 3

Candidate Starts for PharkleMinkus_101:

(Start: 3 @42654 has 159 MA's), (4, 42708), (6, 42738), (21, 43161), (28, 43275), (30, 43317), (34, 43404), (35, 43422), (37, 43440), (50, 43659), (53, 43731), (59, 43809), (60, 43833), (64, 43902), (65, 43905), (66, 44007), (68, 44025), (69, 44058), (70, 44073), (73, 44151), (74, 44154), (81, 44283), (83, 44328), (85, 44463), (88, 44520), (89, 44535), (91, 44547), (93, 44580), (97, 44721), (99, 44805), (124, 45507), (138, 45723), (140, 45765), (141, 45774), (148, 45942), (153, 46059), (154, 46062), (158, 46113), (161, 46200), (165, 46272), (167, 46341),

Gene: Phlegm_99 Start: 40647, Stop: 44447, Start Num: 3

Candidate Starts for Phlegm_99:

(Start: 3 @40647 has 159 MA's), (4, 40701), (6, 40731), (10, 40800), (21, 41151), (28, 41265), (30, 41307), (34, 41364), (35, 41382), (37, 41400), (50, 41619), (53, 41691), (59, 41769), (60, 41793), (64, 41862), (65, 41865), (66, 41967), (68, 41985), (69, 42018), (70, 42033), (73, 42111), (74, 42114), (81, 42243), (83, 42288), (85, 42423), (88, 42480), (89, 42495), (91, 42507), (93, 42540), (97, 42681), (99, 42765), (124, 43467), (138, 43683), (140, 43725), (141, 43734), (148, 43902), (153, 44019), (154, 44022), (158, 44073), (161, 44160), (165, 44232), (167, 44301),

Gene: Phox_93 Start: 41073, Stop: 44888, Start Num: 3

Candidate Starts for Phox_93:

(Start: 3 @41073 has 159 MA's), (4, 41127), (6, 41157), (21, 41577), (28, 41691), (30, 41733), (34, 41808), (35, 41826), (36, 41832), (37, 41844), (41, 41883), (50, 42060), (53, 42132), (59, 42210), (60, 42234), (64, 42303), (65, 42306), (66, 42408), (68, 42426), (69, 42459), (70, 42474), (73, 42552), (74, 42555), (81, 42684), (83, 42729), (85, 42864), (88, 42921), (91, 42948), (93, 42981), (97, 43122), (99, 43206), (124, 43908), (138, 44124), (140, 44166), (141, 44175), (148, 44343), (153, 44460), (154, 44463), (158, 44514), (161, 44601), (165, 44673), (167, 44742),

Gene: Phrappuccino_52 Start: 30830, Stop: 34024, Start Num: 13

Candidate Starts for Phrappuccino_52:

(Start: 13 @30830 has 2 MA's), (15, 30905), (16, 30926), (19, 31061), (29, 31235), (42, 31391), (43, 31448), (47, 31517), (49, 31538), (51, 31580), (52, 31589), (54, 31634), (57, 31658), (58, 31682), (61, 31727), (64, 31790), (65, 31793), (68, 31913), (69, 31946), (72, 32012), (78, 32108), (82, 32150), (84, 32198), (88, 32324), (95, 32465), (101, 32582), (107, 32690), (110, 32744), (111, 32753), (112, 32768), (113, 32801), (114, 32837), (115, 32843), (116, 32852), (117, 32906), (119, 32957), (123,

33110), (125, 33128), (127, 33131), (130, 33164), (131, 33179), (135, 33257), (141, 33368), (143, 33425), (144, 33431), (149, 33539), (151, 33572), (159, 33713), (163, 33788), (167, 33896), (171, 33980),

Gene: Phusco_97 Start: 41412, Stop: 45212, Start Num: 3

Candidate Starts for Phusco_97:

(Start: 3 @41412 has 159 MA's), (4, 41466), (6, 41496), (10, 41565), (21, 41916), (28, 42030), (30, 42072), (34, 42129), (35, 42147), (37, 42165), (50, 42384), (53, 42456), (59, 42534), (60, 42558), (64, 42627), (65, 42630), (66, 42732), (68, 42750), (69, 42783), (70, 42798), (73, 42876), (74, 42879), (81, 43008), (83, 43053), (85, 43188), (88, 43245), (89, 43260), (91, 43272), (93, 43305), (97, 43446), (99, 43530), (124, 44232), (138, 44448), (140, 44490), (141, 44499), (148, 44667), (153, 44784), (154, 44787), (158, 44838), (161, 44925), (165, 44997), (167, 45066),

Gene: Pier_100 Start: 42206, Stop: 46045, Start Num: 3

Candidate Starts for Pier_100:

(Start: 3 @42206 has 159 MA's), (4, 42260), (6, 42290), (21, 42710), (28, 42824), (30, 42866), (34, 42968), (35, 42986), (37, 43004), (50, 43223), (53, 43295), (59, 43373), (60, 43397), (64, 43466), (65, 43469), (66, 43571), (68, 43589), (69, 43622), (70, 43637), (73, 43715), (74, 43718), (81, 43847), (83, 43892), (85, 44027), (88, 44084), (89, 44099), (91, 44111), (93, 44144), (97, 44285), (99, 44369), (120, 44906), (124, 45062), (138, 45278), (140, 45320), (141, 45329), (148, 45497), (153, 45614), (154, 45617), (158, 45668), (161, 45755), (165, 45827), (166, 45887), (167, 45899),

Gene: Pinkcreek_87 Start: 38159, Stop: 41974, Start Num: 3

Candidate Starts for Pinkcreek_87:

(Start: 3 @38159 has 159 MA's), (4, 38213), (6, 38243), (21, 38663), (28, 38777), (30, 38819), (34, 38894), (35, 38912), (36, 38918), (37, 38930), (41, 38969), (50, 39146), (53, 39218), (59, 39296), (60, 39320), (64, 39389), (65, 39392), (66, 39494), (68, 39512), (69, 39545), (70, 39560), (73, 39638), (74, 39641), (81, 39770), (83, 39815), (85, 39950), (88, 40007), (91, 40034), (93, 40067), (97, 40208), (99, 40292), (103, 40373), (124, 40994), (138, 41210), (140, 41252), (141, 41261), (148, 41429), (153, 41546), (154, 41549), (158, 41600), (161, 41687), (165, 41759), (167, 41828),

Gene: Pio_100 Start: 42938, Stop: 46771, Start Num: 3

Candidate Starts for Pio_100:

(Start: 3 @42938 has 159 MA's), (4, 42992), (6, 43022), (21, 43445), (28, 43559), (30, 43601), (34, 43688), (35, 43706), (37, 43724), (50, 43943), (53, 44015), (59, 44093), (60, 44117), (64, 44186), (65, 44189), (66, 44291), (68, 44309), (69, 44342), (70, 44357), (73, 44435), (74, 44438), (81, 44567), (83, 44612), (85, 44747), (88, 44804), (89, 44819), (91, 44831), (93, 44864), (97, 45005), (99, 45089), (124, 45791), (138, 46007), (140, 46049), (141, 46058), (148, 46226), (153, 46343), (154, 46346), (158, 46397), (161, 46484), (165, 46556), (167, 46625),

Gene: Pivoine_96 Start: 40647, Stop: 44447, Start Num: 3

Candidate Starts for Pivoine_96:

(Start: 3 @40647 has 159 MA's), (4, 40701), (6, 40731), (10, 40800), (21, 41151), (28, 41265), (30, 41307), (34, 41364), (35, 41382), (37, 41400), (50, 41619), (53, 41691), (59, 41769), (60, 41793), (64, 41862), (65, 41865), (66, 41967), (68, 41985), (69, 42018), (70, 42033), (73, 42111), (74, 42114), (81, 42243), (83, 42288), (85, 42423), (88, 42480), (89, 42495), (91, 42507), (93, 42540), (97, 42681), (99, 42765), (124, 43467), (138, 43683), (140, 43725), (141, 43734), (148, 43902), (153, 44019), (154, 44022), (158, 44073), (161, 44160), (165, 44232), (167, 44301),

Gene: Pleione_99 Start: 41204, Stop: 45049, Start Num: 3

Candidate Starts for Pleione_99:

(Start: 3 @41204 has 159 MA's), (4, 41258), (6, 41288), (21, 41708), (28, 41822), (30, 41864), (34, 41966), (35, 41984), (37, 42002), (50, 42221), (53, 42293), (59, 42371), (60, 42395), (64, 42464), (65,

42467), (66, 42569), (68, 42587), (69, 42620), (70, 42635), (73, 42713), (74, 42716), (81, 42845), (83, 42890), (85, 43025), (88, 43082), (89, 43097), (91, 43109), (93, 43142), (97, 43283), (99, 43367), (124, 44069), (138, 44285), (140, 44327), (141, 44336), (148, 44504), (153, 44621), (154, 44624), (158, 44675), (161, 44762), (165, 44834), (167, 44903),

Gene: Primadonna_90 Start: 40096, Stop: 43929, Start Num: 3

Candidate Starts for Primadonna_90:

(Start: 3 @40096 has 159 MA's), (4, 40150), (6, 40180), (21, 40603), (28, 40717), (30, 40759), (34, 40846), (35, 40864), (37, 40882), (50, 41101), (53, 41173), (59, 41251), (60, 41275), (64, 41344), (65, 41347), (66, 41449), (68, 41467), (69, 41500), (70, 41515), (73, 41593), (74, 41596), (81, 41725), (83, 41770), (85, 41905), (88, 41962), (89, 41977), (91, 41989), (93, 42022), (97, 42163), (99, 42247), (124, 42949), (138, 43165), (140, 43207), (141, 43216), (148, 43384), (153, 43501), (154, 43504), (158, 43555), (161, 43642), (165, 43714), (167, 43783),

Gene: Pupusa_103 Start: 43458, Stop: 47294, Start Num: 3

Candidate Starts for Pupusa_103:

(Start: 3 @43458 has 159 MA's), (4, 43512), (6, 43542), (10, 43611), (21, 43962), (28, 44076), (30, 44118), (34, 44211), (35, 44229), (37, 44247), (50, 44466), (53, 44538), (59, 44616), (60, 44640), (64, 44709), (65, 44712), (66, 44814), (68, 44832), (69, 44865), (70, 44880), (73, 44958), (74, 44961), (81, 45090), (83, 45135), (85, 45270), (88, 45327), (89, 45342), (91, 45354), (93, 45387), (97, 45528), (99, 45612), (124, 46314), (138, 46530), (140, 46572), (141, 46581), (148, 46749), (153, 46866), (154, 46869), (158, 46920), (161, 47007), (165, 47079), (167, 47148),

Gene: PurduePete_96 Start: 41413, Stop: 45243, Start Num: 3

Candidate Starts for PurduePete_96:

(Start: 2 @41386 has 7 MA's), (Start: 3 @41413 has 159 MA's), (4, 41467), (6, 41497), (10, 41566), (11, 41590), (21, 41917), (28, 42031), (30, 42073), (34, 42160), (35, 42178), (37, 42196), (50, 42415), (53, 42487), (59, 42565), (60, 42589), (64, 42658), (65, 42661), (66, 42763), (68, 42781), (69, 42814), (70, 42829), (73, 42907), (74, 42910), (81, 43039), (83, 43084), (85, 43219), (88, 43276), (89, 43291), (91, 43303), (93, 43336), (97, 43477), (99, 43561), (124, 44263), (138, 44479), (140, 44521), (141, 44530), (148, 44698), (153, 44815), (154, 44818), (158, 44869), (161, 44956), (165, 45028), (167, 45097),

Gene: QBert_90 Start: 40705, Stop: 44565, Start Num: 3

Candidate Starts for QBert_90:

(Start: 3 @40705 has 159 MA's), (4, 40759), (6, 40789), (21, 41209), (28, 41323), (30, 41365), (34, 41482), (35, 41500), (37, 41518), (50, 41737), (53, 41809), (59, 41887), (60, 41911), (64, 41980), (65, 41983), (66, 42085), (68, 42103), (69, 42136), (70, 42151), (73, 42229), (74, 42232), (81, 42361), (83, 42406), (85, 42541), (88, 42598), (89, 42613), (91, 42625), (93, 42658), (97, 42799), (99, 42883), (124, 43585), (138, 43801), (140, 43843), (141, 43852), (148, 44020), (153, 44137), (154, 44140), (158, 44191), (161, 44278), (165, 44350), (167, 44419),

Gene: Quasimodo_97 Start: 41177, Stop: 44992, Start Num: 3

Candidate Starts for Quasimodo_97:

(Start: 3 @41177 has 159 MA's), (4, 41231), (6, 41261), (10, 41330), (21, 41681), (28, 41795), (30, 41837), (34, 41912), (35, 41930), (36, 41936), (37, 41948), (41, 41987), (50, 42164), (53, 42236), (59, 42314), (60, 42338), (64, 42407), (65, 42410), (66, 42512), (68, 42530), (69, 42563), (70, 42578), (73, 42656), (74, 42659), (81, 42788), (83, 42833), (85, 42968), (88, 43025), (91, 43052), (93, 43085), (97, 43226), (99, 43310), (124, 44012), (138, 44228), (140, 44270), (141, 44279), (148, 44447), (153, 44564), (154, 44567), (158, 44618), (161, 44705), (165, 44777), (167, 44846),

Gene: Rabinovish_93 Start: 41046, Stop: 45059, Start Num: 1

Candidate Starts for Rabinovish_93:

(Start: 1 @41046 has 18 MA's), (21, 41748), (28, 41862), (30, 41904), (34, 41979), (35, 41997), (36, 42003), (37, 42015), (41, 42054), (50, 42231), (53, 42303), (59, 42381), (60, 42405), (64, 42474), (65, 42477), (66, 42579), (68, 42597), (69, 42630), (70, 42645), (73, 42723), (74, 42726), (81, 42855), (83, 42900), (85, 43035), (88, 43092), (89, 43107), (91, 43119), (93, 43152), (97, 43293), (99, 43377), (124, 44079), (138, 44295), (140, 44337), (141, 44346), (148, 44514), (153, 44631), (154, 44634), (158, 44685), (161, 44772), (165, 44844), (167, 44913),

Gene: Rahel_96 Start: 41004, Stop: 44804, Start Num: 3

Candidate Starts for Rahel_96:

(Start: 3 @41004 has 159 MA's), (4, 41058), (6, 41088), (10, 41157), (21, 41508), (28, 41622), (30, 41664), (34, 41721), (35, 41739), (37, 41757), (50, 41976), (53, 42048), (59, 42126), (60, 42150), (64, 42219), (65, 42222), (66, 42324), (68, 42342), (69, 42375), (70, 42390), (73, 42468), (74, 42471), (81, 42600), (83, 42645), (85, 42780), (88, 42837), (89, 42852), (91, 42864), (93, 42897), (97, 43038), (99, 43122), (124, 43824), (138, 44040), (140, 44082), (141, 44091), (148, 44259), (153, 44376), (154, 44379), (158, 44430), (161, 44517), (165, 44589), (167, 44658),

Gene: Rizal_93 Start: 40122, Stop: 43952, Start Num: 3

Candidate Starts for Rizal_93:

(Start: 3 @40122 has 159 MA's), (4, 40176), (6, 40206), (21, 40626), (28, 40740), (30, 40782), (34, 40869), (35, 40887), (37, 40905), (50, 41124), (53, 41196), (59, 41274), (60, 41298), (64, 41367), (65, 41370), (66, 41472), (68, 41490), (69, 41523), (70, 41538), (73, 41616), (74, 41619), (81, 41748), (83, 41793), (85, 41928), (88, 41985), (89, 42000), (91, 42012), (93, 42045), (97, 42186), (99, 42270), (124, 42972), (138, 43188), (140, 43230), (141, 43239), (148, 43407), (153, 43524), (154, 43527), (158, 43578), (161, 43665), (165, 43737), (167, 43806),

Gene: RoMag_91 Start: 40534, Stop: 44406, Start Num: 2

Candidate Starts for RoMag_91:

(Start: 2 @40534 has 7 MA's), (Start: 3 @40561 has 159 MA's), (4, 40615), (6, 40645), (10, 40714), (21, 41065), (28, 41179), (30, 41221), (34, 41323), (35, 41341), (37, 41359), (50, 41578), (53, 41650), (59, 41728), (60, 41752), (64, 41821), (65, 41824), (66, 41926), (68, 41944), (69, 41977), (70, 41992), (73, 42070), (74, 42073), (81, 42202), (83, 42247), (85, 42382), (88, 42439), (89, 42454), (91, 42466), (93, 42499), (97, 42640), (99, 42724), (124, 43426), (138, 43642), (140, 43684), (141, 43693), (148, 43861), (153, 43978), (154, 43981), (158, 44032), (161, 44119), (165, 44191), (167, 44260),

Gene: Rocha_95 Start: 40647, Stop: 44477, Start Num: 3

Candidate Starts for Rocha_95:

(Start: 3 @40647 has 159 MA's), (4, 40701), (6, 40731), (21, 41151), (28, 41265), (30, 41307), (34, 41394), (35, 41412), (37, 41430), (50, 41649), (53, 41721), (59, 41799), (60, 41823), (64, 41892), (65, 41895), (66, 41997), (68, 42015), (69, 42048), (70, 42063), (73, 42141), (74, 42144), (81, 42273), (83, 42318), (85, 42453), (88, 42510), (89, 42525), (91, 42537), (93, 42570), (97, 42711), (99, 42795), (124, 43497), (138, 43713), (140, 43755), (141, 43764), (148, 43932), (153, 44049), (154, 44052), (158, 44103), (161, 44190), (165, 44262), (167, 44331),

Gene: Ronan_90 Start: 38448, Stop: 42293, Start Num: 3

Candidate Starts for Ronan_90:

(Start: 3 @38448 has 159 MA's), (4, 38502), (6, 38532), (10, 38601), (21, 38952), (28, 39066), (30, 39108), (34, 39210), (35, 39228), (37, 39246), (50, 39465), (53, 39537), (59, 39615), (60, 39639), (64, 39708), (65, 39711), (66, 39813), (68, 39831), (69, 39864), (70, 39879), (73, 39957), (74, 39960), (81, 40089), (83, 40134), (85, 40269), (88, 40326), (89, 40341), (91, 40353), (93, 40386), (97, 40527), (99, 40611), (124, 41313), (138, 41529), (140, 41571), (141, 41580), (148, 41748), (153, 41865), (154, 41868), (158, 41919), (161, 42006), (165, 42078), (167, 42147),

Gene: Roots515_95 Start: 41398, Stop: 45228, Start Num: 3

Candidate Starts for Roots515_95:

(Start: 3 @41398 has 159 MA's), (4, 41452), (6, 41482), (21, 41902), (28, 42016), (30, 42058), (34, 42145), (35, 42163), (37, 42181), (50, 42400), (53, 42472), (59, 42550), (60, 42574), (64, 42643), (65, 42646), (66, 42748), (68, 42766), (69, 42799), (70, 42814), (73, 42892), (74, 42895), (81, 43024), (83, 43069), (85, 43204), (88, 43261), (89, 43276), (91, 43288), (93, 43321), (97, 43462), (99, 43546), (124, 44248), (138, 44464), (140, 44506), (141, 44515), (148, 44683), (153, 44800), (154, 44803), (158, 44854), (161, 44941), (165, 45013), (167, 45082),

Gene: SVoro_94 Start: 41336, Stop: 45193, Start Num: 2

Candidate Starts for SVoro_94:

(Start: 2 @41336 has 7 MA's), (Start: 3 @41363 has 159 MA's), (4, 41417), (6, 41447), (10, 41516), (11, 41540), (21, 41867), (28, 41981), (30, 42023), (34, 42110), (35, 42128), (37, 42146), (50, 42365), (53, 42437), (59, 42515), (60, 42539), (64, 42608), (65, 42611), (66, 42713), (68, 42731), (69, 42764), (70, 42779), (73, 42857), (74, 42860), (81, 42989), (83, 43034), (85, 43169), (88, 43226), (89, 43241), (91, 43253), (93, 43286), (97, 43427), (99, 43511), (124, 44213), (138, 44429), (140, 44471), (141, 44480), (148, 44648), (153, 44765), (154, 44768), (158, 44819), (161, 44906), (165, 44978), (167, 45047),

Gene: Salacia_100 Start: 41483, Stop: 45283, Start Num: 3

Candidate Starts for Salacia_100:

(Start: 2 @41456 has 7 MA's), (Start: 3 @41483 has 159 MA's), (4, 41537), (6, 41567), (10, 41636), (21, 41987), (28, 42101), (30, 42143), (34, 42200), (35, 42218), (37, 42236), (50, 42455), (53, 42527), (59, 42605), (60, 42629), (64, 42698), (65, 42701), (66, 42803), (68, 42821), (69, 42854), (70, 42869), (73, 42947), (74, 42950), (81, 43079), (83, 43124), (85, 43259), (88, 43316), (89, 43331), (91, 43343), (93, 43376), (97, 43517), (99, 43601), (124, 44303), (138, 44519), (140, 44561), (141, 44570), (148, 44738), (153, 44855), (154, 44858), (158, 44909), (161, 44996), (165, 45068), (167, 45137),

Gene: Sauce_97 Start: 40496, Stop: 44332, Start Num: 3

Candidate Starts for Sauce_97:

(Start: 3 @40496 has 159 MA's), (4, 40550), (6, 40580), (10, 40649), (21, 41000), (28, 41114), (30, 41156), (34, 41249), (35, 41267), (37, 41285), (50, 41504), (53, 41576), (59, 41654), (60, 41678), (64, 41747), (65, 41750), (66, 41852), (68, 41870), (69, 41903), (70, 41918), (73, 41996), (74, 41999), (81, 42128), (83, 42173), (85, 42308), (88, 42365), (89, 42380), (91, 42392), (93, 42425), (97, 42566), (99, 42650), (124, 43352), (138, 43568), (140, 43610), (141, 43619), (148, 43787), (153, 43904), (154, 43907), (158, 43958), (161, 44045), (165, 44117), (167, 44186),

Gene: ScoobyDoobyDoo_89 Start: 39544, Stop: 42636, Start Num: 3

Candidate Starts for ScoobyDoobyDoo_89:

(Start: 3 @39544 has 159 MA's), (8, 39658), (9, 39673), (23, 40036), (29, 40195), (32, 40303), (53, 40699), (55, 40717), (56, 40735), (59, 40777), (63, 40843), (65, 40873), (67, 40981), (69, 41023), (70, 41038), (85, 41191), (86, 41203), (87, 41224), (90, 41266), (92, 41293), (104, 41476), (124, 41770), (126, 41782), (129, 41821), (134, 41875), (152, 42217), (155, 42232), (156, 42238), (161, 42361), (162, 42370), (167, 42490), (168, 42493), (169, 42511),

Gene: ScottMcG_93 Start: 40190, Stop: 44203, Start Num: 1

Candidate Starts for ScottMcG_93:

(Start: 1 @40190 has 18 MA's), (21, 40892), (28, 41006), (30, 41048), (34, 41123), (35, 41141), (36, 41147), (37, 41159), (41, 41198), (50, 41375), (53, 41447), (59, 41525), (60, 41549), (64, 41618), (65, 41621), (66, 41723), (68, 41741), (69, 41774), (70, 41789), (73, 41867), (74, 41870), (81, 41999), (83, 42044), (85, 42179), (88, 42236), (91, 42263), (93, 42296), (97, 42437), (99, 42521), (124, 43223), (138, 43439), (140, 43481), (141, 43490), (148, 43658), (153, 43775), (154, 43778), (158, 43829), (161, 43916), (165, 43988), (167, 44057),

Gene: Sebata_98 Start: 42132, Stop: 45932, Start Num: 3

Candidate Starts for Sebata_98:

(Start: 3 @42132 has 159 MA's), (4, 42186), (6, 42216), (10, 42285), (14, 42402), (21, 42636), (28, 42750), (30, 42792), (34, 42849), (35, 42867), (37, 42885), (50, 43104), (53, 43176), (59, 43254), (60, 43278), (64, 43347), (65, 43350), (66, 43452), (68, 43470), (69, 43503), (70, 43518), (73, 43596), (74, 43599), (81, 43728), (83, 43773), (85, 43908), (88, 43965), (89, 43980), (91, 43992), (93, 44025), (97, 44166), (99, 44250), (124, 44952), (138, 45168), (140, 45210), (141, 45219), (148, 45387), (153, 45504), (154, 45507), (158, 45558), (161, 45645), (165, 45717), (167, 45786),

Gene: Settecandela_52 Start: 30830, Stop: 34024, Start Num: 13

Candidate Starts for Settecandela_52:

(Start: 13 @30830 has 2 MA's), (15, 30905), (16, 30926), (19, 31061), (29, 31235), (42, 31391), (43, 31448), (47, 31517), (49, 31538), (51, 31580), (52, 31589), (54, 31634), (57, 31658), (58, 31682), (61, 31727), (64, 31790), (65, 31793), (68, 31913), (69, 31946), (72, 32012), (78, 32108), (82, 32150), (84, 32198), (88, 32324), (95, 32465), (101, 32582), (107, 32690), (110, 32744), (111, 32753), (112, 32768), (113, 32801), (114, 32837), (115, 32843), (116, 32852), (117, 32906), (119, 32957), (123, 33110), (125, 33128), (127, 33131), (130, 33164), (131, 33179), (135, 33257), (141, 33368), (143, 33425), (144, 33431), (149, 33539), (151, 33572), (159, 33713), (163, 33788), (167, 33896), (171, 33980),

Gene: Shaqnato_89 Start: 39371, Stop: 43207, Start Num: 3

Candidate Starts for Shaqnato_89:

(Start: 3 @39371 has 159 MA's), (4, 39425), (6, 39455), (10, 39524), (21, 39875), (28, 39989), (30, 40031), (34, 40124), (35, 40142), (37, 40160), (50, 40379), (53, 40451), (59, 40529), (60, 40553), (64, 40622), (65, 40625), (66, 40727), (68, 40745), (69, 40778), (70, 40793), (73, 40871), (74, 40874), (81, 41003), (83, 41048), (85, 41183), (88, 41240), (89, 41255), (91, 41267), (93, 41300), (97, 41441), (99, 41525), (124, 42227), (138, 42443), (140, 42485), (141, 42494), (148, 42662), (153, 42779), (154, 42782), (158, 42833), (161, 42920), (165, 42992), (167, 43061),

Gene: Shelob_98 Start: 42197, Stop: 46027, Start Num: 3

Candidate Starts for Shelob_98:

(Start: 3 @42197 has 159 MA's), (4, 42251), (6, 42281), (21, 42701), (28, 42815), (30, 42857), (34, 42944), (35, 42962), (37, 42980), (50, 43199), (53, 43271), (59, 43349), (60, 43373), (64, 43442), (65, 43445), (66, 43547), (68, 43565), (69, 43598), (70, 43613), (73, 43691), (74, 43694), (81, 43823), (83, 43868), (85, 44003), (88, 44060), (89, 44075), (91, 44087), (93, 44120), (97, 44261), (99, 44345), (124, 45047), (138, 45263), (140, 45305), (141, 45314), (148, 45482), (153, 45599), (154, 45602), (158, 45653), (161, 45740), (165, 45812), (167, 45881),

Gene: ShiaLabeouf_96 Start: 41406, Stop: 45239, Start Num: 3

Candidate Starts for ShiaLabeouf_96:

(Start: 3 @41406 has 159 MA's), (4, 41460), (6, 41490), (21, 41913), (28, 42027), (30, 42069), (34, 42156), (35, 42174), (37, 42192), (50, 42411), (53, 42483), (59, 42561), (60, 42585), (64, 42654), (65, 42657), (66, 42759), (68, 42777), (69, 42810), (70, 42825), (73, 42903), (74, 42906), (81, 43035), (83, 43080), (85, 43215), (88, 43272), (89, 43287), (91, 43299), (93, 43332), (97, 43473), (99, 43557), (124, 44259), (138, 44475), (140, 44517), (141, 44526), (148, 44694), (153, 44811), (154, 44814), (158, 44865), (161, 44952), (165, 45024), (167, 45093),

Gene: Shifa_85 Start: 38648, Stop: 42661, Start Num: 1

Candidate Starts for Shifa_85:

(Start: 1 @38648 has 18 MA's), (14, 39116), (21, 39350), (28, 39464), (30, 39506), (34, 39581), (35, 39599), (36, 39605), (37, 39617), (41, 39656), (50, 39833), (53, 39905), (59, 39983), (60, 40007), (64, 40076), (65, 40079), (66, 40181), (68, 40199), (69, 40232), (70, 40247), (73, 40325), (74, 40328), (81, 40457), (83, 40502), (85, 40637), (88, 40694), (91, 40721), (93, 40754), (97, 40895), (99, 40979), (124,

41681), (138, 41897), (140, 41939), (141, 41948), (148, 42116), (153, 42233), (154, 42236), (158, 42287), (161, 42374), (165, 42446), (167, 42515),

Gene: Shnickers_97 Start: 41403, Stop: 45203, Start Num: 3

Candidate Starts for Shnickers_97:

(Start: 3 @41403 has 159 MA's), (4, 41457), (6, 41487), (10, 41556), (21, 41907), (28, 42021), (30, 42063), (34, 42120), (35, 42138), (37, 42156), (50, 42375), (53, 42447), (59, 42525), (60, 42549), (64, 42618), (65, 42621), (66, 42723), (68, 42741), (69, 42774), (70, 42789), (73, 42867), (74, 42870), (81, 42999), (83, 43044), (85, 43179), (88, 43236), (89, 43251), (91, 43263), (93, 43296), (97, 43437), (99, 43521), (124, 44223), (138, 44439), (140, 44481), (141, 44490), (148, 44658), (153, 44775), (154, 44778), (158, 44829), (161, 44916), (165, 44988), (167, 45057),

Gene: Shrimp_96 Start: 41209, Stop: 45039, Start Num: 3

Candidate Starts for Shrimp_96:

(Start: 3 @41209 has 159 MA's), (4, 41263), (6, 41293), (21, 41713), (28, 41827), (30, 41869), (34, 41956), (35, 41974), (37, 41992), (50, 42211), (53, 42283), (59, 42361), (60, 42385), (64, 42454), (65, 42457), (66, 42559), (68, 42577), (69, 42610), (70, 42625), (73, 42703), (74, 42706), (81, 42835), (83, 42880), (85, 43015), (88, 43072), (89, 43087), (91, 43099), (93, 43132), (97, 43273), (99, 43357), (124, 44059), (138, 44275), (140, 44317), (141, 44326), (148, 44494), (153, 44611), (154, 44614), (158, 44665), (161, 44752), (165, 44824), (167, 44893),

Gene: SilverDipper_98 Start: 40647, Stop: 44447, Start Num: 3

Candidate Starts for SilverDipper_98:

(Start: 3 @40647 has 159 MA's), (4, 40701), (6, 40731), (10, 40800), (21, 41151), (28, 41265), (30, 41307), (34, 41364), (35, 41382), (37, 41400), (50, 41619), (53, 41691), (59, 41769), (60, 41793), (64, 41862), (65, 41865), (66, 41967), (68, 41985), (69, 42018), (70, 42033), (73, 42111), (74, 42114), (81, 42243), (83, 42288), (85, 42423), (88, 42480), (89, 42495), (91, 42507), (93, 42540), (97, 42681), (99, 42765), (124, 43467), (138, 43683), (140, 43725), (141, 43734), (148, 43902), (153, 44019), (154, 44022), (158, 44073), (161, 44160), (165, 44232), (167, 44301),

Gene: SmallFry_97 Start: 40598, Stop: 44428, Start Num: 3

Candidate Starts for SmallFry_97:

(Start: 3 @40598 has 159 MA's), (4, 40652), (6, 40682), (10, 40751), (21, 41102), (28, 41216), (30, 41258), (34, 41345), (35, 41363), (37, 41381), (50, 41600), (53, 41672), (59, 41750), (60, 41774), (64, 41843), (65, 41846), (66, 41948), (68, 41966), (69, 41999), (70, 42014), (73, 42092), (74, 42095), (81, 42224), (83, 42269), (85, 42404), (88, 42461), (89, 42476), (91, 42488), (93, 42521), (97, 42662), (99, 42746), (124, 43448), (138, 43664), (140, 43706), (141, 43715), (148, 43883), (153, 44000), (154, 44003), (158, 44054), (161, 44141), (165, 44213), (167, 44282),

Gene: SoilZilla_92 Start: 40295, Stop: 44323, Start Num: 1

Candidate Starts for SoilZilla_92:

(Start: 1 @40295 has 18 MA's), (21, 40997), (28, 41111), (30, 41153), (34, 41240), (35, 41258), (37, 41276), (50, 41495), (53, 41567), (59, 41645), (60, 41669), (64, 41738), (65, 41741), (66, 41843), (68, 41861), (69, 41894), (70, 41909), (73, 41987), (74, 41990), (81, 42119), (83, 42164), (85, 42299), (88, 42356), (89, 42371), (91, 42383), (93, 42416), (97, 42557), (99, 42641), (124, 43343), (138, 43559), (140, 43601), (141, 43610), (148, 43778), (153, 43895), (154, 43898), (158, 43949), (161, 44036), (165, 44108), (167, 44177),

Gene: Spec_93 Start: 41168, Stop: 44968, Start Num: 3

Candidate Starts for Spec_93:

(Start: 3 @41168 has 159 MA's), (4, 41222), (6, 41252), (10, 41321), (21, 41672), (28, 41786), (30, 41828), (34, 41885), (35, 41903), (37, 41921), (50, 42140), (53, 42212), (59, 42290), (60, 42314), (64, 42383), (65, 42386), (66, 42488), (68, 42506), (69, 42539), (70, 42554), (73, 42632), (74, 42635), (81,

42764), (83, 42809), (85, 42944), (88, 43001), (89, 43016), (91, 43028), (93, 43061), (97, 43202), (99, 43286), (124, 43988), (138, 44204), (140, 44246), (141, 44255), (148, 44423), (153, 44540), (154, 44543), (158, 44594), (161, 44681), (165, 44753), (167, 44822),

Gene: Specks_102 Start: 43302, Stop: 47102, Start Num: 3

Candidate Starts for Specks_102:

(Start: 2 @43275 has 7 MA's), (Start: 3 @43302 has 159 MA's), (4, 43356), (6, 43386), (10, 43455), (21, 43806), (28, 43920), (30, 43962), (34, 44019), (35, 44037), (37, 44055), (50, 44274), (53, 44346), (59, 44424), (60, 44448), (64, 44517), (65, 44520), (66, 44622), (68, 44640), (69, 44673), (70, 44688), (73, 44766), (74, 44769), (81, 44898), (83, 44943), (85, 45078), (88, 45135), (89, 45150), (91, 45162), (93, 45195), (97, 45336), (99, 45420), (124, 46122), (138, 46338), (140, 46380), (141, 46389), (148, 46557), (153, 46674), (154, 46677), (158, 46728), (161, 46815), (165, 46887), (167, 46956),

Gene: Sprinklers_92 Start: 39868, Stop: 43704, Start Num: 3

Candidate Starts for Sprinklers_92:

(Start: 3 @39868 has 159 MA's), (4, 39922), (6, 39952), (10, 40021), (21, 40372), (28, 40486), (30, 40528), (34, 40621), (35, 40639), (37, 40657), (50, 40876), (53, 40948), (59, 41026), (60, 41050), (64, 41119), (65, 41122), (66, 41224), (68, 41242), (69, 41275), (70, 41290), (73, 41368), (74, 41371), (81, 41500), (83, 41545), (85, 41680), (88, 41737), (89, 41752), (91, 41764), (93, 41797), (97, 41938), (99, 42022), (124, 42724), (138, 42940), (140, 42982), (141, 42991), (148, 43159), (153, 43276), (154, 43279), (158, 43330), (161, 43417), (165, 43489), (167, 43558),

Gene: Spud_96 Start: 41152, Stop: 44967, Start Num: 3

Candidate Starts for Spud_96:

(Start: 3 @41152 has 159 MA's), (4, 41206), (6, 41236), (21, 41656), (28, 41770), (30, 41812), (34, 41887), (35, 41905), (36, 41911), (37, 41923), (41, 41962), (50, 42139), (53, 42211), (59, 42289), (60, 42313), (64, 42382), (65, 42385), (66, 42487), (68, 42505), (69, 42538), (70, 42553), (73, 42631), (74, 42634), (81, 42763), (83, 42808), (85, 42943), (88, 43000), (91, 43027), (93, 43060), (97, 43201), (99, 43285), (124, 43987), (138, 44203), (140, 44245), (141, 44254), (148, 44422), (153, 44539), (154, 44542), (158, 44593), (161, 44680), (165, 44752), (167, 44821),

Gene: SrishMeg2525_95 Start: 41312, Stop: 45142, Start Num: 3

Candidate Starts for SrishMeg2525_95:

(Start: 3 @41312 has 159 MA's), (4, 41366), (6, 41396), (21, 41816), (28, 41930), (30, 41972), (34, 42059), (35, 42077), (37, 42095), (50, 42314), (53, 42386), (59, 42464), (60, 42488), (64, 42557), (65, 42560), (66, 42662), (68, 42680), (69, 42713), (70, 42728), (73, 42806), (74, 42809), (81, 42938), (83, 42983), (85, 43118), (88, 43175), (89, 43190), (91, 43202), (93, 43235), (97, 43376), (99, 43460), (124, 44162), (138, 44378), (140, 44420), (141, 44429), (148, 44597), (153, 44714), (154, 44717), (158, 44768), (161, 44855), (165, 44927), (167, 44996),

Gene: StephanieG_95 Start: 42021, Stop: 45866, Start Num: 3

Candidate Starts for StephanieG_95:

(Start: 3 @42021 has 159 MA's), (4, 42075), (6, 42105), (21, 42525), (28, 42639), (30, 42681), (34, 42783), (35, 42801), (37, 42819), (50, 43038), (53, 43110), (59, 43188), (60, 43212), (64, 43281), (65, 43284), (66, 43386), (68, 43404), (69, 43437), (70, 43452), (73, 43530), (74, 43533), (81, 43662), (83, 43707), (85, 43842), (88, 43899), (89, 43914), (91, 43926), (93, 43959), (97, 44100), (99, 44184), (124, 44886), (138, 45102), (140, 45144), (141, 45153), (148, 45321), (153, 45438), (154, 45441), (158, 45492), (161, 45579), (165, 45651), (167, 45720),

Gene: Stubby_89 Start: 39237, Stop: 43052, Start Num: 3

Candidate Starts for Stubby_89:

(Start: 3 @39237 has 159 MA's), (4, 39291), (6, 39321), (21, 39741), (28, 39855), (30, 39897), (34, 39972), (35, 39990), (36, 39996), (37, 40008), (41, 40047), (50, 40224), (53, 40296), (59, 40374), (60,

40398), (64, 40467), (65, 40470), (66, 40572), (68, 40590), (69, 40623), (70, 40638), (73, 40716), (74, 40719), (81, 40848), (83, 40893), (85, 41028), (88, 41085), (91, 41112), (93, 41145), (97, 41286), (99, 41370), (103, 41451), (124, 42072), (138, 42288), (140, 42330), (141, 42339), (148, 42507), (153, 42624), (154, 42627), (158, 42678), (161, 42765), (165, 42837), (167, 42906),

Gene: StubbySaigey_99 Start: 39935, Stop: 43735, Start Num: 3

Candidate Starts for StubbySaigey_99:

(Start: 3 @39935 has 159 MA's), (4, 39989), (6, 40019), (10, 40088), (21, 40439), (28, 40553), (30, 40595), (34, 40652), (35, 40670), (37, 40688), (50, 40907), (53, 40979), (59, 41057), (60, 41081), (64, 41150), (65, 41153), (66, 41255), (68, 41273), (69, 41306), (70, 41321), (73, 41399), (74, 41402), (81, 41531), (83, 41576), (85, 41711), (88, 41768), (89, 41783), (91, 41795), (93, 41828), (97, 41969), (99, 42053), (124, 42755), (138, 42971), (140, 43013), (141, 43022), (148, 43190), (153, 43307), (154, 43310), (158, 43361), (161, 43448), (165, 43520), (167, 43589),

Gene: Substance289_95 Start: 40921, Stop: 44721, Start Num: 3

Candidate Starts for Substance289_95:

(Start: 3 @40921 has 159 MA's), (4, 40975), (6, 41005), (10, 41074), (21, 41425), (28, 41539), (30, 41581), (34, 41638), (35, 41656), (37, 41674), (50, 41893), (53, 41965), (59, 42043), (60, 42067), (64, 42136), (65, 42139), (66, 42241), (68, 42259), (69, 42292), (70, 42307), (73, 42385), (74, 42388), (81, 42517), (83, 42562), (85, 42697), (88, 42754), (89, 42769), (91, 42781), (93, 42814), (97, 42955), (99, 43039), (124, 43741), (138, 43957), (140, 43999), (141, 44008), (148, 44176), (153, 44293), (154, 44296), (158, 44347), (161, 44434), (165, 44506), (167, 44575),

Gene: Tainan_101 Start: 42595, Stop: 46425, Start Num: 3

Candidate Starts for Tainan_101:

(Start: 3 @42595 has 159 MA's), (4, 42649), (6, 42679), (21, 43099), (28, 43213), (30, 43255), (34, 43342), (35, 43360), (37, 43378), (50, 43597), (53, 43669), (59, 43747), (60, 43771), (64, 43840), (65, 43843), (66, 43945), (68, 43963), (69, 43996), (70, 44011), (73, 44089), (74, 44092), (81, 44221), (83, 44266), (85, 44401), (88, 44458), (89, 44473), (91, 44485), (93, 44518), (97, 44659), (99, 44743), (124, 45445), (138, 45661), (140, 45703), (141, 45712), (148, 45880), (153, 45997), (154, 46000), (158, 46051), (161, 46138), (165, 46210), (167, 46279),

Gene: Teardrop_96 Start: 40599, Stop: 44426, Start Num: 2

Candidate Starts for Teardrop_96:

(Start: 2 @40599 has 7 MA's), (Start: 3 @40626 has 159 MA's), (4, 40680), (6, 40710), (10, 40779), (21, 41130), (28, 41244), (30, 41286), (34, 41343), (35, 41361), (37, 41379), (50, 41598), (53, 41670), (59, 41748), (60, 41772), (64, 41841), (65, 41844), (66, 41946), (68, 41964), (69, 41997), (70, 42012), (73, 42090), (74, 42093), (81, 42222), (83, 42267), (85, 42402), (88, 42459), (89, 42474), (91, 42486), (93, 42519), (97, 42660), (99, 42744), (124, 43446), (138, 43662), (140, 43704), (141, 43713), (148, 43881), (153, 43998), (154, 44001), (158, 44052), (161, 44139), (165, 44211), (167, 44280),

Gene: TinyTim_96 Start: 41205, Stop: 45035, Start Num: 3

Candidate Starts for TinyTim_96:

(Start: 3 @41205 has 159 MA's), (4, 41259), (6, 41289), (21, 41709), (28, 41823), (30, 41865), (34, 41952), (35, 41970), (37, 41988), (50, 42207), (53, 42279), (59, 42357), (60, 42381), (64, 42450), (65, 42453), (66, 42555), (68, 42573), (69, 42606), (70, 42621), (73, 42699), (74, 42702), (81, 42831), (83, 42876), (85, 43011), (88, 43068), (89, 43083), (91, 43095), (93, 43128), (97, 43269), (99, 43353), (124, 44055), (138, 44271), (140, 44313), (141, 44322), (148, 44490), (153, 44607), (154, 44610), (158, 44661), (161, 44748), (165, 44820), (167, 44889),

Gene: Tonenili_110 Start: 45377, Stop: 49180, Start Num: 3

Candidate Starts for Tonenili_110:

(Start: 2 @45350 has 7 MA's), (Start: 3 @45377 has 159 MA's), (4, 45431), (6, 45461), (7, 45479), (9, 45500), (10, 45530), (18, 45803), (28, 46004), (30, 46046), (33, 46091), (35, 46121), (37, 46139), (49, 46352), (50, 46358), (53, 46430), (60, 46532), (62, 46547), (65, 46604), (66, 46706), (69, 46757), (70, 46772), (71, 46799), (74, 46853), (81, 46982), (83, 47027), (85, 47162), (88, 47219), (91, 47246), (96, 47396), (100, 47516), (121, 48053), (124, 48218), (133, 48329), (139, 48437), (141, 48476), (148, 48644), (152, 48752), (153, 48761), (154, 48764), (157, 48794), (158, 48818), (165, 48968), (166, 49022), (167, 49034),

Gene: Tortoise16_94 Start: 41200, Stop: 45027, Start Num: 2

Candidate Starts for Tortoise16_94:

(Start: 2 @41200 has 7 MA's), (Start: 3 @41227 has 159 MA's), (4, 41281), (6, 41311), (10, 41380), (21, 41731), (28, 41845), (30, 41887), (34, 41944), (35, 41962), (37, 41980), (50, 42199), (53, 42271), (59, 42349), (60, 42373), (64, 42442), (65, 42445), (66, 42547), (68, 42565), (69, 42598), (70, 42613), (73, 42691), (74, 42694), (81, 42823), (83, 42868), (85, 43003), (88, 43060), (89, 43075), (91, 43087), (93, 43120), (97, 43261), (99, 43345), (124, 44047), (138, 44263), (140, 44305), (141, 44314), (148, 44482), (153, 44599), (154, 44602), (158, 44653), (161, 44740), (165, 44812), (167, 44881),

Gene: Trinitium_93 Start: 39673, Stop: 43473, Start Num: 3

Candidate Starts for Trinitium_93:

(Start: 3 @39673 has 159 MA's), (4, 39727), (6, 39757), (10, 39826), (21, 40177), (28, 40291), (30, 40333), (34, 40390), (35, 40408), (37, 40426), (50, 40645), (53, 40717), (59, 40795), (60, 40819), (64, 40888), (65, 40891), (66, 40993), (68, 41011), (69, 41044), (70, 41059), (73, 41137), (74, 41140), (81, 41269), (83, 41314), (85, 41449), (88, 41506), (89, 41521), (91, 41533), (93, 41566), (97, 41707), (99, 41791), (124, 42493), (138, 42709), (140, 42751), (141, 42760), (148, 42928), (153, 43045), (154, 43048), (158, 43099), (161, 43186), (165, 43258), (167, 43327),

Gene: Turret_91 Start: 38902, Stop: 42915, Start Num: 1

Candidate Starts for Turret_91:

(Start: 1 @38902 has 18 MA's), (21, 39604), (28, 39718), (30, 39760), (34, 39835), (35, 39853), (36, 39859), (37, 39871), (41, 39910), (50, 40087), (53, 40159), (59, 40237), (60, 40261), (64, 40330), (65, 40333), (66, 40435), (68, 40453), (69, 40486), (70, 40501), (73, 40579), (74, 40582), (81, 40711), (83, 40756), (85, 40891), (88, 40948), (89, 40963), (91, 40975), (93, 41008), (97, 41149), (99, 41233), (124, 41935), (138, 42151), (140, 42193), (141, 42202), (148, 42370), (153, 42487), (154, 42490), (158, 42541), (161, 42628), (165, 42700), (167, 42769),

Gene: Tyke_98 Start: 42768, Stop: 46568, Start Num: 3

Candidate Starts for Tyke_98:

(Start: 2 @42741 has 7 MA's), (Start: 3 @42768 has 159 MA's), (4, 42822), (6, 42852), (10, 42921), (21, 43272), (28, 43386), (30, 43428), (34, 43485), (35, 43503), (37, 43521), (50, 43740), (53, 43812), (59, 43890), (60, 43914), (64, 43983), (65, 43986), (66, 44088), (68, 44106), (69, 44139), (70, 44154), (73, 44232), (74, 44235), (81, 44364), (83, 44409), (85, 44544), (88, 44601), (89, 44616), (91, 44628), (93, 44661), (97, 44802), (99, 44886), (124, 45588), (138, 45804), (140, 45846), (141, 45855), (148, 46023), (153, 46140), (154, 46143), (158, 46194), (161, 46281), (165, 46353), (167, 46422),

Gene: ValleyTerrace_97 Start: 40647, Stop: 44447, Start Num: 3

Candidate Starts for ValleyTerrace_97:

(Start: 3 @40647 has 159 MA's), (4, 40701), (6, 40731), (10, 40800), (21, 41151), (28, 41265), (30, 41307), (34, 41364), (35, 41382), (37, 41400), (50, 41619), (53, 41691), (59, 41769), (60, 41793), (64, 41862), (65, 41865), (66, 41967), (68, 41985), (69, 42018), (70, 42033), (73, 42111), (74, 42114), (81, 42243), (83, 42288), (85, 42423), (88, 42480), (89, 42495), (91, 42507), (93, 42540), (97, 42681), (99, 42765), (124, 43467), (138, 43683), (140, 43725), (141, 43734), (148, 43902), (153, 44019), (154, 44022), (158, 44073), (161, 44160), (165, 44232), (167, 44301),

Gene: Vortrix_111 Start: 44783, Stop: 48586, Start Num: 3

Candidate Starts for Vortrix_111:

(Start: 2 @44756 has 7 MA's), (Start: 3 @44783 has 159 MA's), (4, 44837), (6, 44867), (7, 44885), (9, 44906), (10, 44936), (18, 45209), (28, 45410), (30, 45452), (33, 45497), (35, 45527), (37, 45545), (49, 45758), (50, 45764), (53, 45836), (60, 45938), (62, 45953), (65, 46010), (66, 46112), (69, 46163), (70, 46178), (71, 46205), (74, 46259), (81, 46388), (83, 46433), (85, 46568), (88, 46625), (91, 46652), (96, 46802), (100, 46922), (121, 47459), (124, 47624), (133, 47735), (139, 47843), (141, 47882), (148, 48050), (152, 48158), (153, 48167), (154, 48170), (157, 48200), (158, 48224), (165, 48374), (166, 48428), (167, 48440),

Gene: Wally_95 Start: 39760, Stop: 43575, Start Num: 3

Candidate Starts for Wally_95:

(Start: 3 @39760 has 159 MA's), (4, 39814), (6, 39844), (21, 40264), (28, 40378), (30, 40420), (34, 40492), (35, 40510), (37, 40528), (50, 40747), (53, 40819), (59, 40897), (60, 40921), (64, 40990), (65, 40993), (66, 41095), (68, 41113), (69, 41146), (70, 41161), (73, 41239), (74, 41242), (81, 41371), (83, 41416), (85, 41551), (88, 41608), (89, 41623), (91, 41635), (93, 41668), (97, 41809), (99, 41893), (124, 42595), (138, 42811), (140, 42853), (141, 42862), (148, 43030), (153, 43147), (154, 43150), (158, 43201), (161, 43288), (165, 43360), (167, 43429),

Gene: Willis_97 Start: 41100, Stop: 44930, Start Num: 3

Candidate Starts for Willis_97:

(Start: 3 @41100 has 159 MA's), (4, 41154), (6, 41184), (21, 41604), (28, 41718), (30, 41760), (34, 41847), (35, 41865), (37, 41883), (50, 42102), (53, 42174), (59, 42252), (60, 42276), (64, 42345), (65, 42348), (66, 42450), (68, 42468), (69, 42501), (70, 42516), (73, 42594), (74, 42597), (81, 42726), (83, 42771), (85, 42906), (88, 42963), (89, 42978), (91, 42990), (93, 43023), (97, 43164), (99, 43248), (124, 43950), (138, 44166), (140, 44208), (141, 44217), (148, 44385), (153, 44502), (154, 44505), (158, 44556), (161, 44643), (165, 44715), (167, 44784),

Gene: Yassified_93 Start: 39906, Stop: 43751, Start Num: 3

Candidate Starts for Yassified_93:

(Start: 3 @39906 has 159 MA's), (4, 39960), (6, 39990), (10, 40059), (21, 40410), (28, 40524), (30, 40566), (34, 40668), (35, 40686), (37, 40704), (50, 40923), (53, 40995), (59, 41073), (60, 41097), (64, 41166), (65, 41169), (66, 41271), (68, 41289), (69, 41322), (70, 41337), (73, 41415), (74, 41418), (81, 41547), (83, 41592), (85, 41727), (88, 41784), (89, 41799), (91, 41811), (93, 41844), (97, 41985), (99, 42069), (124, 42771), (138, 42987), (140, 43029), (141, 43038), (148, 43206), (153, 43323), (154, 43326), (158, 43377), (161, 43464), (165, 43536), (167, 43605),

Gene: YemiJoy2021_97 Start: 41202, Stop: 45032, Start Num: 3

Candidate Starts for YemiJoy2021_97:

(Start: 3 @41202 has 159 MA's), (4, 41256), (6, 41286), (21, 41706), (28, 41820), (30, 41862), (34, 41949), (35, 41967), (37, 41985), (50, 42204), (53, 42276), (59, 42354), (60, 42378), (64, 42447), (65, 42450), (66, 42552), (68, 42570), (69, 42603), (70, 42618), (73, 42696), (74, 42699), (81, 42828), (83, 42873), (85, 43008), (88, 43065), (89, 43080), (91, 43092), (93, 43125), (97, 43266), (99, 43350), (124, 44052), (138, 44268), (140, 44310), (141, 44319), (148, 44487), (153, 44604), (154, 44607), (158, 44658), (161, 44745), (165, 44817), (167, 44886),

Gene: YoungMoneyMata_97 Start: 40398, Stop: 44198, Start Num: 3

Candidate Starts for YoungMoneyMata_97:

(Start: 3 @40398 has 159 MA's), (4, 40452), (6, 40482), (10, 40551), (21, 40902), (28, 41016), (30, 41058), (34, 41115), (35, 41133), (37, 41151), (50, 41370), (53, 41442), (59, 41520), (60, 41544), (64, 41613), (65, 41616), (66, 41718), (68, 41736), (69, 41769), (70, 41784), (73, 41862), (74, 41865), (81, 41994), (83, 42039), (85, 42174), (88, 42231), (89, 42246), (91, 42258), (93, 42291), (97, 42432), (99, 42516), (124, 43218), (138, 43434), (140, 43476), (141, 43485), (148, 43653), (153, 43770), (154,

43773), (158, 43824), (161, 43911), (165, 43983), (167, 44052),

Gene: Yucca_96 Start: 41124, Stop: 44954, Start Num: 3

Candidate Starts for Yucca_96:

(Start: 3 @41124 has 159 MA's), (4, 41178), (6, 41208), (21, 41628), (28, 41742), (30, 41784), (34, 41871), (35, 41889), (37, 41907), (50, 42126), (53, 42198), (59, 42276), (60, 42300), (64, 42369), (65, 42372), (66, 42474), (68, 42492), (69, 42525), (70, 42540), (73, 42618), (74, 42621), (81, 42750), (83, 42795), (85, 42930), (88, 42987), (89, 43002), (91, 43014), (93, 43047), (97, 43188), (99, 43272), (124, 43974), (138, 44190), (140, 44232), (141, 44241), (148, 44409), (153, 44526), (154, 44529), (158, 44580), (161, 44667), (165, 44739), (167, 44808),

Gene: Zalkecks_97 Start: 40890, Stop: 44720, Start Num: 3

Candidate Starts for Zalkecks_97:

(Start: 3 @40890 has 159 MA's), (4, 40944), (6, 40974), (21, 41394), (28, 41508), (30, 41550), (34, 41637), (35, 41655), (37, 41673), (50, 41892), (53, 41964), (59, 42042), (60, 42066), (64, 42135), (65, 42138), (66, 42240), (68, 42258), (69, 42291), (70, 42306), (73, 42384), (74, 42387), (81, 42516), (83, 42561), (85, 42696), (88, 42753), (89, 42768), (91, 42780), (93, 42813), (97, 42954), (99, 43038), (124, 43740), (138, 43956), (140, 43998), (141, 44007), (148, 44175), (153, 44292), (154, 44295), (158, 44346), (161, 44433), (165, 44505), (167, 44574),

Gene: Zeenon_98 Start: 40817, Stop: 44650, Start Num: 3

Candidate Starts for Zeenon_98:

(Start: 3 @40817 has 159 MA's), (4, 40871), (6, 40901), (21, 41324), (28, 41438), (30, 41480), (34, 41567), (35, 41585), (37, 41603), (50, 41822), (53, 41894), (59, 41972), (60, 41996), (64, 42065), (65, 42068), (66, 42170), (68, 42188), (69, 42221), (70, 42236), (73, 42314), (74, 42317), (81, 42446), (83, 42491), (85, 42626), (88, 42683), (89, 42698), (91, 42710), (93, 42743), (97, 42884), (99, 42968), (124, 43670), (138, 43886), (140, 43928), (141, 43937), (148, 44105), (153, 44222), (154, 44225), (158, 44276), (161, 44363), (165, 44435), (167, 44504),

Gene: ZygoTaiga_95 Start: 41977, Stop: 45807, Start Num: 3

Candidate Starts for ZygoTaiga_95:

(Start: 3 @41977 has 159 MA's), (4, 42031), (6, 42061), (21, 42481), (28, 42595), (30, 42637), (34, 42724), (35, 42742), (37, 42760), (50, 42979), (53, 43051), (59, 43129), (60, 43153), (64, 43222), (65, 43225), (66, 43327), (68, 43345), (69, 43378), (70, 43393), (73, 43471), (74, 43474), (81, 43603), (83, 43648), (85, 43783), (88, 43840), (89, 43855), (91, 43867), (93, 43900), (97, 44041), (99, 44125), (124, 44827), (138, 45043), (140, 45085), (141, 45094), (148, 45262), (153, 45379), (154, 45382), (158, 45433), (161, 45520), (165, 45592), (167, 45661),