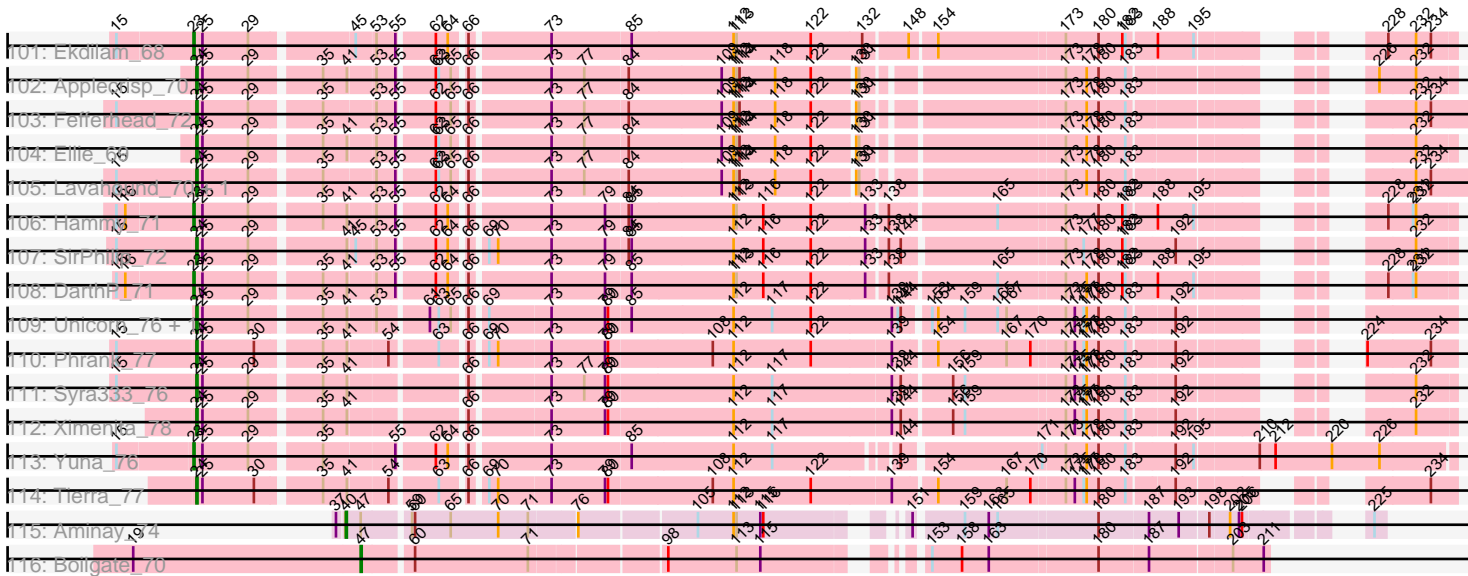


Pham 308059



Note: Tracks are now grouped by subcluster and scaled. Switching in subcluster is indicated by changes in track color. Track scale is now set by default to display the region 30 bp upstream of start 1 to 30 bp downstream of the last possible start. If this default region is judged to be packed too tightly with annotated starts, the track will be further scaled to only show that region of the ORF with annotated starts. This action will be indicated by adding "Zoomed" to the title. For starts, yellow indicates the location of called starts comprised solely of Glimmer/GeneMark auto-annotations, green indicates the location of called starts with at least 1 manual gene annotation.

Pham 308059 Report

This analysis was run 06/27/26 on database version 652.

Pham number 308059 has 222 members, 16 are drafts.

Phages represented in each track:

- Track 1 : MalagasyRose_71
- Track 2 : Nergal_65
- Track 3 : Guanica15_79
- Track 4 : BaghaKamala_72
- Track 5 : Anaya_77
- Track 6 : Twitch_73, Jeckyll_73, AlishaPH_72, Atiba_74, Llorens_73, Belladonna_73, Lunahalos_73, Boiiii_73, Blizzard_73, Rosmarinus_73, Adephagia_72, Hyperbowlee_72, Jarvi_73, Durfee_73, CaseJules_75, Homura_72, CallaLilly_73, Spock_73, ShiaSurprise_74, BEEST_73, Padfoot_73, Piatt_72, Inky_73, Asayake_73, Capricorn_73, Dalmuri_73, Peel_73, CREW_72, Topper_73, Tachez_73, BGlluviae_73
- Track 7 : Validus_78
- Track 8 : Bern_74
- Track 9 : Nikao_63, Binglebops_60, LilPharaoh_61, SgtBeansprout_61, Torres_63, Nutello_60, Teejan_62, Amelie_60, Trice_60, Enkosi_62, Mdavu_61
- Track 10 : Emerson_76, Padpat_77
- Track 11 : Ganymede_73, QuincyRose_71
- Track 12 : Geraldini_77
- Track 13 : Curiosium_79
- Track 14 : Beezoo_76, YoureAdopted_73
- Track 15 : Veliki_74, Ramen_74
- Track 16 : DartGoblin_74
- Track 17 : Jayhawk_76, BarrelRoll_74, Rapunzel97_76, Slimphazie_75
- Track 18 : Stinson_74
- Track 19 : Zabiza_69, HedwigODU_73, Joy99_74, ActinUp_74
- Track 20 : Nibb_75
- Track 21 : Pokerus_74, Deby_73, Mynx_75
- Track 22 : Clipper_78, MackKat_70
- Track 23 : Ageofdapage_77
- Track 24 : Shaobing_74, Niklas_75
- Track 25 : Dartin_74, McMater_74, Richo_74
- Track 26 : Scarlett_76
- Track 27 : TiniBug_73
- Track 28 : Prithvi_76, LindNT_72, TreyKay_76
- Track 29 : DrHayes_73, SamuelLPlaqson_73, Urkel_73, Anma_73
- Track 30 : TruffulaTree_75
- Track 31 : Megsy_75

- Track 32 : Efra2_80
- Track 33 : MarkPhew_74
- Track 34 : TaiwanKao_75
- Track 35 : Bella96_74
- Track 36 : CrimD_75
- Track 37 : JAWS_72
- Track 38 : MeaningOfLife_75
- Track 39 : Apocalypse_76
- Track 40 : Angelica_72, Sulley_72
- Track 41 : Pisa1_71, Pisa4_65
- Track 42 : Devera_81, Dole_78, Illumine_79
- Track 43 : Chris_74
- Track 44 : Yunkel11_79
- Track 45 : LastHope_79
- Track 46 : Zavala_76
- Track 47 : LaterM_73
- Track 48 : CheetoDust_73
- Track 49 : Murucutumbu_74
- Track 50 : Chavito_75
- Track 51 : LeMond_75
- Track 52 : Tiri_73
- Track 53 : Adonis_73
- Track 54 : Peanam_75
- Track 55 : KiSi_76
- Track 56 : Oscar_75
- Track 57 : TingHuaYa_76
- Track 58 : DismalStressor_77, DismalFunk_77, Marcoliusprime_76
- Track 59 : Strobilo_78, Findley_77
- Track 60 : Milly_77
- Track 61 : TM4_75
- Track 62 : Doughnut_77
- Track 63 : BoostSeason_76, Mufasa_76
- Track 64 : ZoeJ_76
- Track 65 : ShedlockHolmes_76
- Track 66 : Keshu_76
- Track 67 : Hurricane_74
- Track 68 : Lea83_74
- Track 69 : MacnCheese_76
- Track 70 : TBond007_70
- Track 71 : Pixie_73
- Track 72 : Pharb_72
- Track 73 : TribbleTrouble_75
- Track 74 : Ruthiejr_79
- Track 75 : Y2_75, Y10_75, JF1_78
- Track 76 : Cheetobro_78, DanSyl44_81, Qhanda_80, YasnayaPolyana_77, Slarp_78, Lebo14_77, OmniCritical_78
- Track 77 : Reptar3000_75, Bobquesha_79
- Track 78 : Eponine_80, Fionnbharth_78, Wintermute_78
- Track 79 : Malthus_79, Mitti_78, Taquito_77, Kraw_78
- Track 80 : Patt_74, MissDaisy_75
- Track 81 : Juliette_80
- Track 82 : Chancellor_78, SamScheppers_77

- Track 83 : BananenDer11_66, Collard_64, InvictusManeo_64, Agent47_66, DoubleChamp_63, ViviJ_65, LilDirt_65
- Track 84 : Waterfoul_68, Miryou_70, Thyatira_69
- Track 85 : Psycho_66, Edugator_65, Dadosky_68, AlleyCat_68, Larva_67, Neighly_68
- Track 86 : Leston_66
- Track 87 : Feyre_69
- Track 88 : Omnicron_70
- Track 89 : Gengar_66, OkiRoe_67
- Track 90 : Rando14_69
- Track 91 : SoSeph_67, Heftyboy_67
- Track 92 : Paola_66, Guillsminger_67
- Track 93 : Kratio_64
- Track 94 : Cain_77, Bryler_77
- Track 95 : Marshawn_71
- Track 96 : Tigress9_77, Krueger_77
- Track 97 : TClif_74
- Track 98 : November_70
- Track 99 : Amohnition_71
- Track 100 : Shadow1_77, Sunflower1121_78
- Track 101 : Ekdilam_68
- Track 102 : Applecrisp_70
- Track 103 : Fefferhead_72
- Track 104 : Ellie_69
- Track 105 : Lavahound_70, Amgine_71
- Track 106 : Hammy_71
- Track 107 : SirPhilip_72
- Track 108 : DarthP_71
- Track 109 : Unicorn_76, PhelpsODU_76
- Track 110 : Phrank_77
- Track 111 : Syra333_76
- Track 112 : Ximenita_78
- Track 113 : Yuna_76
- Track 114 : Tierra_77
- Track 115 : Aminay_74
- Track 116 : Boilgate_70

Summary of Final Annotations (See graph section above for start numbers):

The start number called the most often in the published annotations is 24, it was called in 120 of the 206 non-draft genes in the pham.

Genes that call this "Most Annotated" start:

- ActinUp_74, Adephegia_72, Adonis_73, Ageofdapage_77, AlishaPH_72, Amelie_60, Amgine_71, Anaya_77, Angelica_72, Anma_73, Apocalypse_76, Applecrisp_70, Asayake_73, Atiba_74, BEEST_73, BGIlluviae_73, BaghaKamala_72, BarrelRoll_74, Beezoo_76, Bella96_74, Belladonna_73, Bern_74, Biglebops_60, Blizzard_73, Boiiii_73, Bryler_77, CREW_72, Cain_77, CallaLilly_73, Capricorn_73, CaseJules_75, Chavito_75, CheetoDust_73, Clipper_78, CrimD_75, Curiosium_79, Dalmuri_73, DartGoblin_74, Deby_73, Devera_81, Dole_78, DrHayes_73, Durfee_73,

Efra2_80, Ellie_69, Emerson_76, Enkosi_62, Fefferhead_72, Ganymede_73, Geraldini_77, Guanica15_79, HedwigODU_73, Homura_72, Hyperbowlee_72, Illumine_79, Inky_73, Jarvi_73, Jayhawk_76, Jeckyll_73, Joy99_74, Krueger_77, LastHope_79, LaterM_73, Lavahound_70, LilPharaoh_61, LindNT_72, Llorens_73, Lunahalos_73, MacKat_70, Mdavu_61, MeaningOfLife_75, Megsy_75, Murucutumbu_74, Mynx_75, Nikao_63, Niklas_75, Nutello_60, Padfoot_73, Padpat_77, Peanam_75, Peel_73, PhelpsODU_76, Phrank_77, Piatt_72, Pisa1_71, Pisa4_65, Pokerus_74, Prithvi_76, QuincyRose_71, Ramen_74, Rapunzel97_76, Rosmarinus_73, SamuelLPlaqson_73, SgtBeansprout_61, Shadow1_77, Shaobing_74, ShiaSurprise_74, SirPhilip_72, Slimphazie_75, Spock_73, Stinson_74, Sulley_72, Sunflower1121_78, Syra333_76, TClif_74, Tachez_73, TaiwanKao_75, Teejan_62, Tierra_77, Tigress9_77, TingHuaYa_76, TiniBug_73, Tiri_73, Topper_73, Torres_63, TreyKay_76, Trice_60, TruffulaTree_75, Twitch_73, Unicorn_76, Urkel_73, Validus_78, Veliki_74, Ximenita_78, YoureAdopted_73, Yunkel11_79, Zabiza_69, Zavala_76,

Genes that have the "Most Annotated" start but do not call it:

- Dartin_74, JAWS_72, McMater_74, Richo_74,

Genes that do not have the "Most Annotated" start:

- Agent47_66, AlleyCat_68, Aminay_74, Amohntion_71, BananenDer11_66, Bobquesha_79, Boilgate_70, BoostSeason_76, Chancellor_78, Cheetobro_78, Chris_74, Collard_64, Dadosky_68, DanSyl44_81, DarthP_71, DismalFunk_77, DismalStressor_77, DoubleChamp_63, Doughnut_77, Edugator_65, Ekdilam_68, Eponine_80, Feyre_69, Findley_77, Fionnbharth_78, Gengar_66, Guillsminger_67, Hammy_71, Heftyboy_67, Hurricane_74, InvictusManeo_64, JF1_78, Juliette_80, Keshu_76, KiSi_76, Kratio_64, Kraw_78, Larva_67, LeMond_75, Lea83_74, Lebo14_77, Leston_66, LiIDirt_65, MacnCheese_76, MalagasyRose_71, Malthus_79, Marcoliusprime_76, MarkPhew_74, Marshawn_71, Milly_77, Miryou_70, MissDaisy_75, Mitti_78, Mufasa_76, Neighly_68, Nergal_65, Nibb_75, November_70, OkiRoe_67, OmniCritical_78, Omnicron_70, Oscar_75, Paola_66, Patt_74, Pharb_72, Pixie_73, Psycho_66, Qhanda_80, Rando14_69, Reptar3000_75, Ruthiejr_79, SamScheppers_77, Scarlett_76, ShedlockHolmes_76, Slarp_78, SoSeph_67, Strobilo_78, TBond007_70, TM4_75, Taquito_77, Thyatira_69, TribbleTrouble_75, ViviJ_65, Waterfoul_68, Wintermute_78, Y10_75, Y2_75, YasnayaPolyana_77, Yuna_76, ZoeJ_76,

Summary by start number:

Start 23:

- Found in 11 of 222 (5.0%) of genes in pham
- Manual Annotations of this start: 6 of 206
- Called 54.5% of time when present
- Phage (with cluster) where this start called: Amohntion_71 (K6), DarthP_71 (K6), Ekdilam_68 (K6), Hammy_71 (K6), November_70 (K6), Yuna_76 (K6),

Start 24:

- Found in 132 of 222 (59.5%) of genes in pham
- Manual Annotations of this start: 120 of 206
- Called 97.0% of time when present
- Phage (with cluster) where this start called: ActinUp_74 (K1), Adephegia_72 (K1), Adonis_73 (K1), Ageofdapage_77 (K1), AlishaPH_72 (K1), Amelie_60 (K1), Amgine_71 (K6), Anaya_77 (K1), Angelica_72 (K1), Anma_73 (K1), Apocalypse_76

(K1), Applecrisp_70 (K6), Asayake_73 (K1), Atiba_74 (K1), BEEST_73 (K1), BGIlluviae_73 (K1), BaghaKamala_72 (K1), BarrelRoll_74 (K1), Beezoo_76 (K1), Bella96_74 (K1), Belladonna_73 (K1), Bern_74 (K1), Binglebops_60 (K1), Blizzard_73 (K1), Boiiii_73 (K1), Bryler_77 (K6), CREW_72 (K1), Cain_77 (K6), CallaLilly_73 (K1), Capricorn_73 (K1), CaseJules_75 (K1), Chavito_75 (K1), CheetoDust_73 (K1), Clipper_78 (K1), CrimD_75 (K1), Curiosium_79 (K1), Dalmuri_73 (K1), DartGoblin_74 (K1), Deby_73 (K1), Devera_81 (K1), Dole_78 (K1), DrHayes_73 (K1), Durfee_73 (K1), Efra2_80 (K1), Ellie_69 (K6), Emerson_76 (K1), Enkosi_62 (K1), Fefferhead_72 (K6), Ganymede_73 (K1), Geraldini_77 (K1), Guanica15_79 (K1), HedwigODU_73 (K1), Homura_72 (K1), Hyperbowlee_72 (K1), Illumine_79 (K1), Inky_73 (K1), Jarvi_73 (K1), Jayhawk_76 (K1), Jeckyll_73 (K1), Joy99_74 (K1), Krueger_77 (K6), LastHope_79 (K1), LaterM_73 (K1), Lavahound_70 (K6), LilPharaoh_61 (K1), LindNT_72 (K1), Llorens_73 (K1), Lunahalos_73 (K1), MacKat_70 (K1), Mdavu_61 (K1), MeaningOfLife_75 (K1), Megsy_75 (K1), Murucutumbu_74 (K1), Mynx_75 (K1), Nikao_63 (K1), Niklas_75 (K1), Nutello_60 (K1), Padfoot_73 (K1), Padpat_77 (K1), Peanam_75 (K1), Peel_73 (K1), PhelpsODU_76 (K6), Phrank_77 (K6), Piatt_72 (K1), Pisa1_71 (K1), Pisa4_65 (K1), Pokerus_74 (K1), Prithvi_76 (K1), QuincyRose_71 (K1), Ramen_74 (K1), Rapunzel97_76 (K1), Rosmarinus_73 (K1), SamuelLPlaqson_73 (K1), SgtBeansprout_61 (K1), Shadow1_77 (K6), Shaobing_74 (K1), ShiaSurprise_74 (K1), SirPhilip_72 (K6), Slimphazie_75 (K1), Spock_73 (K1), Stinson_74 (K1), Sulley_72 (K1), Sunflower1121_78 (K6), Syra333_76 (K6), TClif_74 (K6), Tachez_73 (K1), TaiwanKao_75 (K1), Teejan_62 (K1), Tierra_77 (K6), Tigress9_77 (K6), TingHuaYa_76 (K1), TiniBug_73 (K1), Tiri_73 (K1), Topper_73 (K1), Torres_63 (K1), TreyKay_76 (K1), Trice_60 (K1), TruffulaTree_75 (K1), Twitch_73 (K1), Unicorn_76 (K6), Urkel_73 (K1), Validus_78 (K1), Veliki_74 (K1), Ximenita_78 (K6), YoureAdopted_73 (K1), Yunkel11_79 (K1), Zabiza_69 (K1), Zavala_76 (K1),

Start 30:

- Found in 32 of 222 (14.4%) of genes in pham
- Manual Annotations of this start: 7 of 206
- Called 21.9% of time when present
- Phage (with cluster) where this start called: Chris_74 (K1), KiSi_76 (K1), LeMond_75 (K1), MarkPhew_74 (K1), Nibb_75 (K1), Oscar_75 (K1), Scarlett_76 (K1),

Start 31:

- Found in 20 of 222 (9.0%) of genes in pham
- Manual Annotations of this start: 1 of 206
- Called 5.0% of time when present
- Phage (with cluster) where this start called: Marshawn_71 (K6),

Start 35:

- Found in 135 of 222 (60.8%) of genes in pham
- Manual Annotations of this start: 1 of 206
- Called 0.7% of time when present
- Phage (with cluster) where this start called: JAWS_72 (K1),

Start 40:

- Found in 1 of 222 (0.5%) of genes in pham
- Manual Annotations of this start: 1 of 206
- Called 100.0% of time when present
- Phage (with cluster) where this start called: Aminay_74 (K7),

Start 41:

- Found in 37 of 222 (16.7%) of genes in pham
- No Manual Annotations of this start.
- Called 8.1% of time when present
- Phage (with cluster) where this start called: Dartin_74 (K1), McMater_74 (K1), Richo_74 (K1),

Start 44:

- Found in 2 of 222 (0.9%) of genes in pham
- Manual Annotations of this start: 1 of 206
- Called 50.0% of time when present
- Phage (with cluster) where this start called: MalagasyRose_71 (AG),

Start 45:

- Found in 32 of 222 (14.4%) of genes in pham
- Manual Annotations of this start: 25 of 206
- Called 84.4% of time when present
- Phage (with cluster) where this start called: Agent47_66 (K5), AlleyCat_68 (K5), BananenDer11_66 (K5), Collard_64 (K5), Dadosky_68 (K5), DoubleChamp_63 (K5), Edugator_65 (K5), Feyre_69 (K5), Gengar_66 (K5), Guillsminger_67 (K5), Heftyboy_67 (K5), InvictusManeo_64 (K5), Kratio_64 (K5), Larva_67 (K5), Leston_66 (K5), LilDirt_65 (K5), Miryou_70 (K5), Neighly_68 (K3), OkiRoe_67 (K5), Omnicron_70 (K5), Paola_66 (K5), Psycho_66 (K5), Rando14_69 (K5), SoSeph_67 (K5), Thyatira_69 (K5), ViviJ_65 (K5), Waterfoul_68 (K5),

Start 47:

- Found in 27 of 222 (12.2%) of genes in pham
- Manual Annotations of this start: 23 of 206
- Called 96.3% of time when present
- Phage (with cluster) where this start called: Bobquesha_79 (K4), Boilgate_70 (K8), Chancellor_78 (K4), Cheetobro_78 (K4), DanSyl44_81 (K4), Eponine_80 (K4), Fionnbharth_78 (K4), JF1_78 (K4), Juliette_80 (K4), Kraw_78 (K4), Lebo14_77 (K4), Malthus_79 (K4), MissDaisy_75 (K4), Mitti_78 (K4), OmniCritical_78 (K4), Patt_74 (K4), Qhanda_80 (K4), Reptar3000_75 (K4), Ruthiejr_79 (K4), SamScheppers_77 (K4), Slarp_78 (K4), Taquito_77 (K4), Wintermute_78 (K4), Y10_75 (K4), Y2_75 (K4), YasnayaPolyana_77 (K4),

Start 48:

- Found in 22 of 222 (9.9%) of genes in pham
- Manual Annotations of this start: 1 of 206
- Called 4.5% of time when present
- Phage (with cluster) where this start called: Nergal_65 (AG),

Start 49:

- Found in 9 of 222 (4.1%) of genes in pham
- Manual Annotations of this start: 9 of 206
- Called 100.0% of time when present
- Phage (with cluster) where this start called: Hurricane_74 (K3), Keshu_76 (K3), Lea83_74 (K3), MacnCheese_76 (K3), Pharb_72 (K3), Pixie_73 (K3), ShedlockHolmes_76 (K3), TBond007_70 (K3), TribbleTrouble_75 (K3),

Start 50:

- Found in 11 of 222 (5.0%) of genes in pham

- Manual Annotations of this start: 11 of 206
- Called 100.0% of time when present
- Phage (with cluster) where this start called: BoostSeason_76 (K2), DismalFunk_77 (K2), DismalStressor_77 (K2), Doughnut_77 (K2), Findley_77 (K2), Marcoliusprime_76 (K2), Milly_77 (K2), Mufasa_76 (K2), Strobilo_78 (K2), TM4_75 (K2), ZoeJ_76 (K2),

Summary by clusters:

There are 9 clusters represented in this pham: AG, K3, K2, K1, K7, K6, K5, K4, K8,

Info for manual annotations of cluster AG:

- Start number 44 was manually annotated 1 time for cluster AG.
- Start number 48 was manually annotated 1 time for cluster AG.

Info for manual annotations of cluster K1:

- Start number 24 was manually annotated 101 times for cluster K1.
- Start number 30 was manually annotated 7 times for cluster K1.
- Start number 35 was manually annotated 1 time for cluster K1.

Info for manual annotations of cluster K2:

- Start number 50 was manually annotated 11 times for cluster K2.

Info for manual annotations of cluster K3:

- Start number 49 was manually annotated 9 times for cluster K3.

Info for manual annotations of cluster K4:

- Start number 47 was manually annotated 22 times for cluster K4.

Info for manual annotations of cluster K5:

- Start number 45 was manually annotated 25 times for cluster K5.

Info for manual annotations of cluster K6:

- Start number 23 was manually annotated 6 times for cluster K6.
- Start number 24 was manually annotated 19 times for cluster K6.
- Start number 31 was manually annotated 1 time for cluster K6.

Info for manual annotations of cluster K7:

- Start number 40 was manually annotated 1 time for cluster K7.

Info for manual annotations of cluster K8:

- Start number 47 was manually annotated 1 time for cluster K8.

Gene Information:

Gene: ActinUp_74 Start: 48731, Stop: 49918, Start Num: 24

Candidate Starts for ActinUp_74:

(Start: 24 @48731 has 120 MA's), (25, 48737), (Start: 35 @48857 has 1 MA's), (36, 48863), (Start: 48 @48893 has 1 MA's), (53, 48905), (61, 48950), (62, 48956), (63, 48959), (66, 48980), (69, 48992), (73, 49055), (75, 49073), (76, 49082), (77, 49088), (79, 49109), (85, 49133), (90, 49151), (112, 49235), (113, 49238), (117, 49274), (118, 49277), (121, 49304), (122, 49313), (129, 49355), (167, 49487),

(173, 49544), (183, 49604), (192, 49649), (194, 49655), (195, 49667), (212, 49742), (217, 49766), (219, 49793), (220, 49799), (221, 49814), (223, 49826), (230, 49868),

Gene: Adephagia_72 Start: 48568, Stop: 49755, Start Num: 24

Candidate Starts for Adephagia_72:

(Start: 24 @48568 has 120 MA's), (25, 48574), (Start: 35 @48694 has 1 MA's), (36, 48700), (42, 48718), (53, 48742), (61, 48787), (62, 48793), (63, 48796), (66, 48817), (69, 48829), (73, 48892), (76, 48919), (77, 48925), (79, 48946), (85, 48970), (90, 48988), (112, 49072), (113, 49075), (117, 49111), (118, 49114), (121, 49141), (122, 49150), (129, 49192), (167, 49324), (173, 49381), (183, 49441), (192, 49486), (194, 49492), (195, 49504), (212, 49579), (217, 49603), (219, 49630), (220, 49636), (221, 49651), (223, 49663), (230, 49705),

Gene: Adonis_73 Start: 49003, Stop: 50190, Start Num: 24

Candidate Starts for Adonis_73:

(Start: 24 @49003 has 120 MA's), (25, 49009), (Start: 35 @49129 has 1 MA's), (36, 49135), (Start: 48 @49165 has 1 MA's), (53, 49177), (61, 49222), (62, 49228), (63, 49231), (66, 49252), (69, 49264), (73, 49327), (76, 49354), (77, 49360), (79, 49381), (84, 49402), (85, 49405), (90, 49423), (112, 49507), (113, 49510), (117, 49546), (118, 49549), (121, 49576), (122, 49585), (129, 49627), (167, 49759), (173, 49816), (183, 49876), (192, 49921), (194, 49927), (195, 49939), (212, 50014), (217, 50038), (219, 50065), (220, 50071), (221, 50086), (223, 50098), (230, 50140),

Gene: Agent47_66 Start: 46221, Stop: 47066, Start Num: 45

Candidate Starts for Agent47_66:

(33, 46158), (Start: 45 @46221 has 25 MA's), (59, 46263), (62, 46287), (66, 46311), (73, 46383), (79, 46437), (89, 46470), (106, 46521), (108, 46527), (112, 46548), (113, 46551), (118, 46590), (130, 46665), (131, 46668), (141, 46698), (154, 46725), (163, 46776), (166, 46791), (173, 46848), (176, 46860), (189, 46935), (192, 46950), (195, 46968), (198, 46980), (204, 47004), (209, 47016),

Gene: Ageofdapage_77 Start: 49926, Stop: 51116, Start Num: 24

Candidate Starts for Ageofdapage_77:

(Start: 24 @49926 has 120 MA's), (25, 49932), (Start: 35 @50052 has 1 MA's), (42, 50079), (60, 50136), (62, 50157), (63, 50160), (66, 50181), (69, 50193), (73, 50256), (75, 50274), (76, 50283), (77, 50289), (79, 50310), (84, 50331), (85, 50334), (90, 50352), (112, 50436), (113, 50439), (117, 50475), (121, 50505), (122, 50514), (129, 50556), (136, 50571), (173, 50745), (183, 50805), (190, 50841), (192, 50847), (196, 50868), (212, 50940), (217, 50964), (219, 50991), (223, 51024),

Gene: AlishaPH_72 Start: 48829, Stop: 50016, Start Num: 24

Candidate Starts for AlishaPH_72:

(Start: 24 @48829 has 120 MA's), (25, 48835), (Start: 35 @48955 has 1 MA's), (36, 48961), (42, 48979), (53, 49003), (61, 49048), (62, 49054), (63, 49057), (66, 49078), (69, 49090), (73, 49153), (76, 49180), (77, 49186), (79, 49207), (85, 49231), (90, 49249), (112, 49333), (113, 49336), (117, 49372), (118, 49375), (121, 49402), (122, 49411), (129, 49453), (167, 49585), (173, 49642), (183, 49702), (192, 49747), (194, 49753), (195, 49765), (212, 49840), (217, 49864), (219, 49891), (220, 49897), (221, 49912), (223, 49924), (230, 49966),

Gene: AlleyCat_68 Start: 46549, Stop: 47403, Start Num: 45

Candidate Starts for AlleyCat_68:

(20, 46357), (22, 46390), (33, 46486), (Start: 45 @46549 has 25 MA's), (46, 46552), (58, 46591), (59, 46594), (62, 46618), (66, 46642), (73, 46714), (79, 46768), (89, 46801), (106, 46852), (108, 46858), (112, 46879), (113, 46882), (118, 46921), (130, 46996), (131, 46999), (141, 47029), (163, 47107), (166, 47122), (173, 47179), (176, 47191), (182, 47236), (189, 47266), (192, 47281), (195, 47299), (198, 47311), (204, 47335),

Gene: Amelie_60 Start: 45735, Stop: 46916, Start Num: 24

Candidate Starts for Amelie_60:

(Start: 24 @45735 has 120 MA's), (25, 45741), (26, 45753), (Start: 35 @45849 has 1 MA's), (41, 45873), (Start: 48 @45885 has 1 MA's), (54, 45909), (55, 45915), (60, 45927), (61, 45942), (62, 45948), (63, 45951), (66, 45972), (68, 45981), (69, 45984), (72, 46038), (73, 46044), (75, 46062), (77, 46077), (79, 46098), (80, 46101), (85, 46122), (94, 46149), (96, 46155), (101, 46173), (108, 46203), (112, 46224), (113, 46227), (116, 46254), (117, 46263), (121, 46293), (122, 46302), (123, 46314), (134, 46359), (145, 46386), (147, 46389), (155, 46422), (157, 46437), (159, 46443), (163, 46467), (165, 46476), (167, 46485), (171, 46518), (173, 46539), (175, 46548), (176, 46551), (180, 46572), (183, 46599), (190, 46638), (192, 46644), (195, 46662), (196, 46665), (198, 46674), (207, 46710), (212, 46737), (213, 46740), (214, 46746), (217, 46761), (219, 46788), (221, 46809), (222, 46812), (223, 46821), (235, 46905), (236, 46908),

Gene: Amgine_71 Start: 49342, Stop: 50448, Start Num: 24

Candidate Starts for Amgine_71:

(15, 49264), (Start: 24 @49342 has 120 MA's), (25, 49348), (29, 49393), (Start: 35 @49456 has 1 MA's), (53, 49504), (55, 49522), (62, 49555), (63, 49558), (65, 49570), (66, 49579), (73, 49654), (77, 49687), (84, 49729), (109, 49822), (112, 49834), (113, 49837), (114, 49840), (118, 49876), (122, 49912), (130, 49951), (131, 49954), (173, 50134), (178, 50155), (180, 50167), (183, 50194), (232, 50389), (234, 50404),

Gene: Aminay_74 Start: 48045, Stop: 48938, Start Num: 40

Candidate Starts for Aminay_74:

(37, 48039), (Start: 40 @48045 has 1 MA's), (Start: 47 @48060 has 23 MA's), (59, 48102), (60, 48105), (65, 48141), (70, 48189), (71, 48219), (76, 48261), (105, 48372), (112, 48408), (113, 48411), (115, 48435), (116, 48438), (151, 48540), (159, 48582), (163, 48606), (165, 48615), (180, 48711), (187, 48759), (193, 48789), (198, 48816), (202, 48834), (205, 48843), (206, 48846), (225, 48927),

Gene: Amohnition_71 Start: 49043, Stop: 50146, Start Num: 23

Candidate Starts for Amohnition_71:

(15, 48968), (16, 48977), (Start: 23 @49043 has 6 MA's), (25, 49052), (29, 49097), (Start: 35 @49160 has 1 MA's), (41, 49184), (53, 49208), (55, 49226), (62, 49259), (64, 49271), (66, 49283), (73, 49358), (79, 49412), (85, 49436), (112, 49538), (113, 49541), (122, 49616), (133, 49670), (138, 49688), (165, 49790), (173, 49853), (180, 49886), (182, 49910), (183, 49913), (195, 49973), (228, 50081), (231, 50105), (232, 50108),

Gene: Anaya_77 Start: 49707, Stop: 50813, Start Num: 24

Candidate Starts for Anaya_77:

(Start: 24 @49707 has 120 MA's), (25, 49713), (Start: 35 @49833 has 1 MA's), (36, 49839), (42, 49857), (Start: 48 @49869 has 1 MA's), (53, 49881), (61, 49926), (62, 49932), (63, 49935), (66, 49956), (69, 49968), (73, 50031), (75, 50049), (76, 50058), (77, 50064), (79, 50085), (85, 50109), (90, 50127), (112, 50211), (113, 50214), (117, 50250), (118, 50253), (121, 50280), (122, 50289), (129, 50331), (136, 50346), (142, 50364), (167, 50463), (173, 50520), (180, 50553), (183, 50580), (195, 50643), (230, 50763),

Gene: Angelica_72 Start: 48688, Stop: 49875, Start Num: 24

Candidate Starts for Angelica_72:

(Start: 24 @48688 has 120 MA's), (25, 48694), (Start: 30 @48745 has 7 MA's), (Start: 35 @48814 has 1 MA's), (36, 48820), (42, 48838), (53, 48862), (61, 48907), (62, 48913), (63, 48916), (66, 48937), (69, 48949), (73, 49012), (75, 49030), (76, 49039), (77, 49045), (79, 49066), (85, 49090), (90, 49108), (112, 49192), (113, 49195), (117, 49231), (118, 49234), (121, 49261), (122, 49270), (129, 49312), (173, 49501), (183, 49561), (192, 49606), (194, 49612), (195, 49624), (212, 49699), (217, 49723), (219, 49750), (220, 49756), (221, 49771), (223, 49783), (230, 49825),

Gene: Anma_73 Start: 49181, Stop: 50269, Start Num: 24

Candidate Starts for Anma_73:

(Start: 24 @49181 has 120 MA's), (25, 49187), (Start: 35 @49307 has 1 MA's), (42, 49334), (60, 49391), (62, 49412), (63, 49415), (66, 49436), (73, 49511), (76, 49538), (77, 49544), (79, 49565), (84, 49586), (85, 49589), (90, 49607), (112, 49691), (113, 49694), (117, 49730), (118, 49733), (121, 49760), (122, 49769), (149, 49835), (162, 49901), (167, 49922), (173, 49979), (180, 50012), (183, 50039), (195, 50099), (196, 50102), (230, 50219),

Gene: Apocalypse_76 Start: 49451, Stop: 50557, Start Num: 24

Candidate Starts for Apocalypse_76:

(Start: 24 @49451 has 120 MA's), (25, 49457), (Start: 30 @49508 has 7 MA's), (Start: 35 @49577 has 1 MA's), (36, 49583), (42, 49601), (53, 49625), (61, 49670), (62, 49676), (63, 49679), (66, 49700), (69, 49712), (73, 49775), (75, 49793), (76, 49802), (79, 49829), (84, 49850), (85, 49853), (90, 49871), (103, 49907), (112, 49955), (113, 49958), (117, 49994), (118, 49997), (121, 50024), (122, 50033), (129, 50075), (136, 50090), (142, 50108), (173, 50264), (180, 50297), (183, 50324), (192, 50369), (195, 50387), (230, 50507),

Gene: Applecrisp_70 Start: 48635, Stop: 49720, Start Num: 24

Candidate Starts for Applecrisp_70:

(Start: 24 @48635 has 120 MA's), (25, 48641), (29, 48686), (Start: 35 @48749 has 1 MA's), (41, 48773), (53, 48797), (55, 48815), (62, 48848), (63, 48851), (65, 48863), (66, 48872), (73, 48947), (77, 48980), (84, 49022), (109, 49115), (112, 49127), (113, 49130), (114, 49133), (118, 49169), (122, 49205), (130, 49244), (131, 49247), (173, 49427), (178, 49448), (180, 49460), (183, 49487), (226, 49646), (232, 49682),

Gene: Asayake_73 Start: 48883, Stop: 50070, Start Num: 24

Candidate Starts for Asayake_73:

(Start: 24 @48883 has 120 MA's), (25, 48889), (Start: 35 @49009 has 1 MA's), (36, 49015), (42, 49033), (53, 49057), (61, 49102), (62, 49108), (63, 49111), (66, 49132), (69, 49144), (73, 49207), (76, 49234), (77, 49240), (79, 49261), (85, 49285), (90, 49303), (112, 49387), (113, 49390), (117, 49426), (118, 49429), (121, 49456), (122, 49465), (129, 49507), (167, 49639), (173, 49696), (183, 49756), (192, 49801), (194, 49807), (195, 49819), (212, 49894), (217, 49918), (219, 49945), (220, 49951), (221, 49966), (223, 49978), (230, 50020),

Gene: Atiba_74 Start: 48531, Stop: 49718, Start Num: 24

Candidate Starts for Atiba_74:

(Start: 24 @48531 has 120 MA's), (25, 48537), (Start: 35 @48657 has 1 MA's), (36, 48663), (42, 48681), (53, 48705), (61, 48750), (62, 48756), (63, 48759), (66, 48780), (69, 48792), (73, 48855), (76, 48882), (77, 48888), (79, 48909), (85, 48933), (90, 48951), (112, 49035), (113, 49038), (117, 49074), (118, 49077), (121, 49104), (122, 49113), (129, 49155), (167, 49287), (173, 49344), (183, 49404), (192, 49449), (194, 49455), (195, 49467), (212, 49542), (217, 49566), (219, 49593), (220, 49599), (221, 49614), (223, 49626), (230, 49668),

Gene: BEEST_73 Start: 48883, Stop: 50070, Start Num: 24

Candidate Starts for BEEST_73:

(Start: 24 @48883 has 120 MA's), (25, 48889), (Start: 35 @49009 has 1 MA's), (36, 49015), (42, 49033), (53, 49057), (61, 49102), (62, 49108), (63, 49111), (66, 49132), (69, 49144), (73, 49207), (76, 49234), (77, 49240), (79, 49261), (85, 49285), (90, 49303), (112, 49387), (113, 49390), (117, 49426), (118, 49429), (121, 49456), (122, 49465), (129, 49507), (167, 49639), (173, 49696), (183, 49756), (192, 49801), (194, 49807), (195, 49819), (212, 49894), (217, 49918), (219, 49945), (220, 49951), (221, 49966), (223, 49978), (230, 50020),

Gene: BGlluviae_73 Start: 48686, Stop: 49873, Start Num: 24

Candidate Starts for BGlluviae_73:

(Start: 24 @48686 has 120 MA's), (25, 48692), (Start: 35 @48812 has 1 MA's), (36, 48818), (42, 48836), (53, 48860), (61, 48905), (62, 48911), (63, 48914), (66, 48935), (69, 48947), (73, 49010), (76, 49037), (77, 49043), (79, 49064), (85, 49088), (90, 49106), (112, 49190), (113, 49193), (117, 49229), (118, 49232), (121, 49259), (122, 49268), (129, 49310), (167, 49442), (173, 49499), (183, 49559), (192, 49604), (194, 49610), (195, 49622), (212, 49697), (217, 49721), (219, 49748), (220, 49754), (221, 49769), (223, 49781), (230, 49823),

Gene: BaghaKamala_72 Start: 48117, Stop: 49304, Start Num: 24

Candidate Starts for BaghaKamala_72:

(1, 47949), (3, 47973), (4, 47979), (6, 47982), (9, 47994), (10, 48000), (14, 48039), (17, 48060), (Start: 24 @48117 has 120 MA's), (25, 48123), (Start: 35 @48243 has 1 MA's), (36, 48249), (42, 48267), (53, 48291), (61, 48336), (62, 48342), (63, 48345), (66, 48366), (69, 48378), (73, 48441), (76, 48468), (77, 48474), (79, 48495), (85, 48519), (90, 48537), (112, 48621), (113, 48624), (117, 48660), (118, 48663), (121, 48690), (122, 48699), (129, 48741), (167, 48873), (173, 48930), (183, 48990), (192, 49035), (194, 49041), (195, 49053), (212, 49128), (217, 49152), (219, 49179), (220, 49185), (221, 49200), (223, 49212), (230, 49254),

Gene: BananenDer11_66 Start: 46182, Stop: 47027, Start Num: 45

Candidate Starts for BananenDer11_66:

(33, 46119), (Start: 45 @46182 has 25 MA's), (59, 46224), (62, 46248), (66, 46272), (73, 46344), (79, 46398), (89, 46431), (106, 46482), (108, 46488), (112, 46509), (113, 46512), (118, 46551), (130, 46626), (131, 46629), (141, 46659), (154, 46686), (163, 46737), (166, 46752), (173, 46809), (176, 46821), (189, 46896), (192, 46911), (195, 46929), (198, 46941), (204, 46965), (209, 46977),

Gene: BarrelRoll_74 Start: 49169, Stop: 50275, Start Num: 24

Candidate Starts for BarrelRoll_74:

(Start: 24 @49169 has 120 MA's), (25, 49175), (Start: 30 @49226 has 7 MA's), (Start: 35 @49295 has 1 MA's), (36, 49301), (42, 49319), (53, 49343), (61, 49388), (62, 49394), (63, 49397), (66, 49418), (69, 49430), (73, 49493), (75, 49511), (76, 49520), (77, 49526), (79, 49547), (85, 49571), (90, 49589), (112, 49673), (113, 49676), (117, 49712), (118, 49715), (121, 49742), (122, 49751), (129, 49793), (136, 49808), (142, 49826), (167, 49925), (173, 49982), (180, 50015), (183, 50042), (192, 50087), (195, 50105), (230, 50225),

Gene: Beezoo_76 Start: 49665, Stop: 50852, Start Num: 24

Candidate Starts for Beezoo_76:

(Start: 24 @49665 has 120 MA's), (25, 49671), (Start: 30 @49722 has 7 MA's), (Start: 35 @49791 has 1 MA's), (36, 49797), (42, 49815), (Start: 48 @49827 has 1 MA's), (53, 49839), (61, 49884), (62, 49890), (63, 49893), (66, 49914), (69, 49926), (73, 49989), (75, 50007), (76, 50016), (77, 50022), (79, 50043), (85, 50067), (90, 50085), (112, 50169), (113, 50172), (117, 50208), (118, 50211), (121, 50238), (122, 50247), (129, 50289), (167, 50421), (173, 50478), (183, 50538), (192, 50583), (194, 50589), (195, 50601), (212, 50676), (217, 50700), (219, 50727), (220, 50733), (221, 50748), (223, 50760), (230, 50802),

Gene: Bella96_74 Start: 49027, Stop: 50136, Start Num: 24

Candidate Starts for Bella96_74:

(Start: 24 @49027 has 120 MA's), (25, 49033), (Start: 35 @49153 has 1 MA's), (42, 49180), (60, 49237), (62, 49258), (63, 49261), (66, 49282), (71, 49333), (73, 49357), (75, 49375), (76, 49384), (77, 49390), (79, 49411), (84, 49432), (85, 49435), (90, 49453), (108, 49516), (112, 49537), (113, 49540), (118, 49579), (121, 49606), (122, 49615), (129, 49657), (173, 49846), (180, 49879), (183, 49906), (195, 49966), (196, 49969), (230, 50086),

Gene: Belladonna_73 Start: 48686, Stop: 49873, Start Num: 24

Candidate Starts for Belladonna_73:

(Start: 24 @48686 has 120 MA's), (25, 48692), (Start: 35 @48812 has 1 MA's), (36, 48818), (42, 48836), (53, 48860), (61, 48905), (62, 48911), (63, 48914), (66, 48935), (69, 48947), (73, 49010), (76, 49037), (77, 49043), (79, 49064), (85, 49088), (90, 49106), (112, 49190), (113, 49193), (117, 49229), (118, 49232), (121, 49259), (122, 49268), (129, 49310), (167, 49442), (173, 49499), (183, 49559), (192, 49604), (194, 49610), (195, 49622), (212, 49697), (217, 49721), (219, 49748), (220, 49754), (221, 49769), (223, 49781), (230, 49823),

Gene: Bern_74 Start: 47713, Stop: 48822, Start Num: 24

Candidate Starts for Bern_74:

(2, 47545), (7, 47575), (8, 47578), (12, 47596), (15, 47635), (16, 47644), (Start: 24 @47713 has 120 MA's), (25, 47719), (Start: 35 @47839 has 1 MA's), (46, 47875), (60, 47923), (62, 47944), (63, 47947), (66, 47968), (73, 48043), (75, 48061), (77, 48076), (79, 48097), (80, 48100), (84, 48118), (85, 48121), (112, 48223), (113, 48226), (118, 48265), (121, 48292), (122, 48301), (129, 48343), (136, 48358), (145, 48379), (154, 48406), (167, 48475), (173, 48532), (180, 48565), (183, 48592), (195, 48652), (196, 48655), (230, 48772),

Gene: Biglebops_60 Start: 45750, Stop: 46931, Start Num: 24

Candidate Starts for Biglebops_60:

(Start: 24 @45750 has 120 MA's), (25, 45756), (26, 45768), (Start: 35 @45864 has 1 MA's), (41, 45888), (Start: 48 @45900 has 1 MA's), (54, 45924), (55, 45930), (60, 45942), (61, 45957), (62, 45963), (63, 45966), (66, 45987), (68, 45996), (69, 45999), (72, 46053), (73, 46059), (75, 46077), (77, 46092), (79, 46113), (80, 46116), (85, 46137), (94, 46164), (96, 46170), (101, 46188), (108, 46218), (112, 46239), (113, 46242), (116, 46269), (117, 46278), (121, 46308), (122, 46317), (123, 46329), (134, 46374), (145, 46401), (147, 46404), (155, 46437), (157, 46452), (159, 46458), (163, 46482), (165, 46491), (167, 46500), (171, 46533), (173, 46554), (175, 46563), (176, 46566), (180, 46587), (183, 46614), (190, 46653), (192, 46659), (195, 46677), (196, 46680), (198, 46689), (207, 46725), (212, 46752), (213, 46755), (214, 46761), (217, 46776), (219, 46803), (221, 46824), (222, 46827), (223, 46836), (235, 46920), (236, 46923),

Gene: Blizzard_73 Start: 48883, Stop: 50070, Start Num: 24

Candidate Starts for Blizzard_73:

(Start: 24 @48883 has 120 MA's), (25, 48889), (Start: 35 @49009 has 1 MA's), (36, 49015), (42, 49033), (53, 49057), (61, 49102), (62, 49108), (63, 49111), (66, 49132), (69, 49144), (73, 49207), (76, 49234), (77, 49240), (79, 49261), (85, 49285), (90, 49303), (112, 49387), (113, 49390), (117, 49426), (118, 49429), (121, 49456), (122, 49465), (129, 49507), (167, 49639), (173, 49696), (183, 49756), (192, 49801), (194, 49807), (195, 49819), (212, 49894), (217, 49918), (219, 49945), (220, 49951), (221, 49966), (223, 49978), (230, 50020),

Gene: Bobquesha_79 Start: 47993, Stop: 48871, Start Num: 47

Candidate Starts for Bobquesha_79:

(Start: 47 @47993 has 23 MA's), (60, 48038), (63, 48062), (64, 48071), (71, 48152), (76, 48194), (77, 48200), (82, 48233), (92, 48266), (98, 48275), (110, 48332), (112, 48341), (113, 48344), (115, 48368), (121, 48410), (123, 48431), (153, 48482), (154, 48488), (158, 48512), (159, 48515), (163, 48539), (165, 48548), (174, 48614), (178, 48632), (179, 48638), (180, 48644), (183, 48671), (187, 48692), (193, 48722), (202, 48767),

Gene: Boiiii_73 Start: 48885, Stop: 50072, Start Num: 24

Candidate Starts for Boiiii_73:

(Start: 24 @48885 has 120 MA's), (25, 48891), (Start: 35 @49011 has 1 MA's), (36, 49017), (42, 49035), (53, 49059), (61, 49104), (62, 49110), (63, 49113), (66, 49134), (69, 49146), (73, 49209), (76, 49236), (77, 49242), (79, 49263), (85, 49287), (90, 49305), (112, 49389), (113, 49392), (117, 49428),

(118, 49431), (121, 49458), (122, 49467), (129, 49509), (167, 49641), (173, 49698), (183, 49758), (192, 49803), (194, 49809), (195, 49821), (212, 49896), (217, 49920), (219, 49947), (220, 49953), (221, 49968), (223, 49980), (230, 50022),

Gene: Boilgate_70 Start: 51766, Stop: 52578, Start Num: 47

Candidate Starts for Boilgate_70:

(19, 51538), (Start: 47 @51766 has 23 MA's), (60, 51811), (71, 51925), (98, 52045), (113, 52114), (115, 52138), (153, 52255), (158, 52285), (163, 52312), (180, 52417), (187, 52465), (203, 52543), (211, 52573),

Gene: BoostSeason_76 Start: 50587, Stop: 51489, Start Num: 50

Candidate Starts for BoostSeason_76:

(Start: 50 @50587 has 11 MA's), (60, 50629), (73, 50764), (77, 50797), (107, 50899), (108, 50902), (110, 50914), (113, 50926), (136, 51040), (153, 51079), (159, 51112), (173, 51208), (176, 51220), (180, 51241), (181, 51262), (183, 51268), (187, 51289), (193, 51319), (194, 51322), (203, 51367), (227, 51472),

Gene: Bryler_77 Start: 48601, Stop: 49704, Start Num: 24

Candidate Starts for Bryler_77:

(15, 48523), (Start: 24 @48601 has 120 MA's), (25, 48607), (Start: 30 @48658 has 7 MA's), (Start: 35 @48715 has 1 MA's), (41, 48739), (63, 48817), (66, 48838), (69, 48850), (70, 48859), (73, 48910), (79, 48964), (80, 48967), (108, 49069), (112, 49090), (122, 49168), (139, 49246), (154, 49285), (170, 49378), (173, 49408), (177, 49426), (178, 49429), (180, 49441), (183, 49468), (192, 49510),

Gene: CREW_72 Start: 48686, Stop: 49873, Start Num: 24

Candidate Starts for CREW_72:

(Start: 24 @48686 has 120 MA's), (25, 48692), (Start: 35 @48812 has 1 MA's), (36, 48818), (42, 48836), (53, 48860), (61, 48905), (62, 48911), (63, 48914), (66, 48935), (69, 48947), (73, 49010), (76, 49037), (77, 49043), (79, 49064), (85, 49088), (90, 49106), (112, 49190), (113, 49193), (117, 49229), (118, 49232), (121, 49259), (122, 49268), (129, 49310), (167, 49442), (173, 49499), (183, 49559), (192, 49604), (194, 49610), (195, 49622), (212, 49697), (217, 49721), (219, 49748), (220, 49754), (221, 49769), (223, 49781), (230, 49823),

Gene: Cain_77 Start: 48589, Stop: 49692, Start Num: 24

Candidate Starts for Cain_77:

(15, 48511), (Start: 24 @48589 has 120 MA's), (25, 48595), (Start: 30 @48646 has 7 MA's), (Start: 35 @48703 has 1 MA's), (41, 48727), (63, 48805), (66, 48826), (69, 48838), (70, 48847), (73, 48898), (79, 48952), (80, 48955), (108, 49057), (112, 49078), (122, 49156), (139, 49234), (154, 49273), (170, 49366), (173, 49396), (177, 49414), (178, 49417), (180, 49429), (183, 49456), (192, 49498),

Gene: CallaLilly_73 Start: 48609, Stop: 49796, Start Num: 24

Candidate Starts for CallaLilly_73:

(Start: 24 @48609 has 120 MA's), (25, 48615), (Start: 35 @48735 has 1 MA's), (36, 48741), (42, 48759), (53, 48783), (61, 48828), (62, 48834), (63, 48837), (66, 48858), (69, 48870), (73, 48933), (76, 48960), (77, 48966), (79, 48987), (85, 49011), (90, 49029), (112, 49113), (113, 49116), (117, 49152), (118, 49155), (121, 49182), (122, 49191), (129, 49233), (167, 49365), (173, 49422), (183, 49482), (192, 49527), (194, 49533), (195, 49545), (212, 49620), (217, 49644), (219, 49671), (220, 49677), (221, 49692), (223, 49704), (230, 49746),

Gene: Capricorn_73 Start: 48686, Stop: 49873, Start Num: 24

Candidate Starts for Capricorn_73:

(Start: 24 @48686 has 120 MA's), (25, 48692), (Start: 35 @48812 has 1 MA's), (36, 48818), (42, 48836), (53, 48860), (61, 48905), (62, 48911), (63, 48914), (66, 48935), (69, 48947), (73, 49010), (76,

49037), (77, 49043), (79, 49064), (85, 49088), (90, 49106), (112, 49190), (113, 49193), (117, 49229), (118, 49232), (121, 49259), (122, 49268), (129, 49310), (167, 49442), (173, 49499), (183, 49559), (192, 49604), (194, 49610), (195, 49622), (212, 49697), (217, 49721), (219, 49748), (220, 49754), (221, 49769), (223, 49781), (230, 49823),

Gene: CaseJules_75 Start: 48883, Stop: 50070, Start Num: 24

Candidate Starts for CaseJules_75:

(Start: 24 @48883 has 120 MA's), (25, 48889), (Start: 35 @49009 has 1 MA's), (36, 49015), (42, 49033), (53, 49057), (61, 49102), (62, 49108), (63, 49111), (66, 49132), (69, 49144), (73, 49207), (76, 49234), (77, 49240), (79, 49261), (85, 49285), (90, 49303), (112, 49387), (113, 49390), (117, 49426), (118, 49429), (121, 49456), (122, 49465), (129, 49507), (167, 49639), (173, 49696), (183, 49756), (192, 49801), (194, 49807), (195, 49819), (212, 49894), (217, 49918), (219, 49945), (220, 49951), (221, 49966), (223, 49978), (230, 50020),

Gene: Chancellor_78 Start: 49464, Stop: 50342, Start Num: 47

Candidate Starts for Chancellor_78:

(Start: 47 @49464 has 23 MA's), (60, 49509), (64, 49542), (67, 49572), (71, 49623), (76, 49665), (77, 49671), (79, 49692), (82, 49704), (92, 49737), (98, 49746), (110, 49803), (112, 49812), (113, 49815), (115, 49839), (121, 49881), (123, 49902), (153, 49953), (154, 49959), (158, 49983), (159, 49986), (163, 50010), (165, 50019), (169, 50043), (174, 50085), (175, 50091), (179, 50109), (180, 50115), (183, 50142), (184, 50151), (187, 50163), (202, 50238), (225, 50331),

Gene: Chavito_75 Start: 49702, Stop: 50799, Start Num: 24

Candidate Starts for Chavito_75:

(2, 49534), (7, 49564), (8, 49567), (12, 49585), (15, 49624), (Start: 24 @49702 has 120 MA's), (25, 49708), (Start: 35 @49816 has 1 MA's), (41, 49840), (Start: 48 @49852 has 1 MA's), (61, 49909), (62, 49915), (63, 49918), (66, 49939), (73, 50011), (75, 50029), (76, 50038), (77, 50044), (83, 50080), (85, 50089), (112, 50191), (113, 50194), (114, 50197), (116, 50221), (121, 50260), (122, 50269), (131, 50311), (140, 50344), (143, 50347), (157, 50395), (159, 50401), (163, 50425), (165, 50434), (170, 50467), (173, 50503), (180, 50536), (183, 50563), (195, 50626),

Gene: CheetoDust_73 Start: 48364, Stop: 49470, Start Num: 24

Candidate Starts for CheetoDust_73:

(Start: 24 @48364 has 120 MA's), (25, 48370), (Start: 30 @48421 has 7 MA's), (Start: 35 @48490 has 1 MA's), (36, 48496), (42, 48514), (53, 48538), (61, 48583), (62, 48589), (63, 48592), (66, 48613), (69, 48625), (73, 48688), (75, 48706), (76, 48715), (77, 48721), (79, 48742), (85, 48766), (90, 48784), (112, 48868), (113, 48871), (117, 48907), (118, 48910), (121, 48937), (122, 48946), (129, 48988), (167, 49120), (173, 49177), (180, 49210), (183, 49237), (192, 49282), (195, 49300), (230, 49420),

Gene: Cheetobro_78 Start: 49632, Stop: 50510, Start Num: 47

Candidate Starts for Cheetobro_78:

(Start: 47 @49632 has 23 MA's), (60, 49677), (64, 49710), (67, 49740), (71, 49791), (76, 49833), (77, 49839), (79, 49860), (82, 49872), (92, 49905), (98, 49914), (110, 49971), (112, 49980), (113, 49983), (115, 50007), (121, 50049), (123, 50070), (153, 50121), (154, 50127), (158, 50151), (159, 50154), (163, 50178), (165, 50187), (169, 50211), (174, 50253), (175, 50259), (179, 50277), (180, 50283), (183, 50310), (184, 50319), (187, 50331), (202, 50406),

Gene: Chris_74 Start: 49447, Stop: 50478, Start Num: 30

Candidate Starts for Chris_74:

(21, 49372), (Start: 30 @49447 has 7 MA's), (Start: 31 @49453 has 1 MA's), (42, 49531), (60, 49591), (62, 49612), (66, 49636), (73, 49711), (75, 49729), (87, 49795), (109, 49879), (113, 49894), (118, 49933), (122, 49969), (137, 50041), (144, 50053), (173, 50203), (180, 50236), (194, 50314), (195, 50326), (200, 50344), (233, 50449), (234, 50455), (235, 50467),

Gene: Clipper_78 Start: 49785, Stop: 50972, Start Num: 24

Candidate Starts for Clipper_78:

(Start: 24 @49785 has 120 MA's), (25, 49791), (Start: 30 @49842 has 7 MA's), (Start: 35 @49911 has 1 MA's), (36, 49917), (42, 49935), (53, 49959), (61, 50004), (62, 50010), (63, 50013), (66, 50034), (69, 50046), (73, 50109), (75, 50127), (76, 50136), (77, 50142), (79, 50163), (85, 50187), (90, 50205), (112, 50289), (113, 50292), (117, 50328), (118, 50331), (121, 50358), (122, 50367), (129, 50409), (136, 50424), (173, 50598), (183, 50658), (192, 50703), (194, 50709), (195, 50721), (212, 50796), (217, 50820), (219, 50847), (220, 50853), (221, 50868), (223, 50880), (230, 50922),

Gene: Collard_64 Start: 46182, Stop: 47027, Start Num: 45

Candidate Starts for Collard_64:

(33, 46119), (Start: 45 @46182 has 25 MA's), (59, 46224), (62, 46248), (66, 46272), (73, 46344), (79, 46398), (89, 46431), (106, 46482), (108, 46488), (112, 46509), (113, 46512), (118, 46551), (130, 46626), (131, 46629), (141, 46659), (154, 46686), (163, 46737), (166, 46752), (173, 46809), (176, 46821), (189, 46896), (192, 46911), (195, 46929), (198, 46941), (204, 46965), (209, 46977),

Gene: CrimD_75 Start: 49772, Stop: 50872, Start Num: 24

Candidate Starts for CrimD_75:

(2, 49604), (7, 49634), (8, 49637), (12, 49655), (15, 49694), (Start: 24 @49772 has 120 MA's), (25, 49778), (Start: 35 @49886 has 1 MA's), (42, 49913), (60, 49970), (62, 49991), (63, 49994), (66, 50015), (69, 50027), (73, 50090), (76, 50117), (77, 50123), (79, 50144), (84, 50165), (85, 50168), (90, 50186), (112, 50270), (113, 50273), (117, 50309), (118, 50312), (121, 50339), (122, 50348), (129, 50390), (145, 50426), (158, 50477), (167, 50522), (173, 50579), (180, 50612), (183, 50639), (190, 50678), (195, 50702), (230, 50822),

Gene: Curiosium_79 Start: 48656, Stop: 49837, Start Num: 24

Candidate Starts for Curiosium_79:

(Start: 24 @48656 has 120 MA's), (25, 48662), (27, 48680), (28, 48704), (29, 48707), (Start: 31 @48719 has 1 MA's), (Start: 35 @48770 has 1 MA's), (36, 48776), (57, 48845), (60, 48854), (62, 48875), (63, 48878), (66, 48899), (73, 48974), (76, 49001), (77, 49007), (79, 49028), (84, 49049), (85, 49052), (90, 49070), (112, 49154), (113, 49157), (117, 49193), (118, 49196), (121, 49223), (122, 49232), (129, 49274), (136, 49289), (167, 49406), (173, 49463), (180, 49496), (183, 49523), (190, 49559), (192, 49565), (194, 49571), (195, 49583), (212, 49658), (217, 49682), (219, 49709), (221, 49730), (235, 49826),

Gene: Dadosky_68 Start: 46551, Stop: 47405, Start Num: 45

Candidate Starts for Dadosky_68:

(20, 46359), (22, 46392), (33, 46488), (Start: 45 @46551 has 25 MA's), (46, 46554), (58, 46593), (59, 46596), (62, 46620), (66, 46644), (73, 46716), (79, 46770), (89, 46803), (106, 46854), (108, 46860), (112, 46881), (113, 46884), (118, 46923), (130, 46998), (131, 47001), (141, 47031), (163, 47109), (166, 47124), (173, 47181), (176, 47193), (182, 47238), (189, 47268), (192, 47283), (195, 47301), (198, 47313), (204, 47337),

Gene: Dalmuri_73 Start: 48686, Stop: 49873, Start Num: 24

Candidate Starts for Dalmuri_73:

(Start: 24 @48686 has 120 MA's), (25, 48692), (Start: 35 @48812 has 1 MA's), (36, 48818), (42, 48836), (53, 48860), (61, 48905), (62, 48911), (63, 48914), (66, 48935), (69, 48947), (73, 49010), (76, 49037), (77, 49043), (79, 49064), (85, 49088), (90, 49106), (112, 49190), (113, 49193), (117, 49229), (118, 49232), (121, 49259), (122, 49268), (129, 49310), (167, 49442), (173, 49499), (183, 49559), (192, 49604), (194, 49610), (195, 49622), (212, 49697), (217, 49721), (219, 49748), (220, 49754), (221, 49769), (223, 49781), (230, 49823),

Gene: DanSyl44_81 Start: 50883, Stop: 51761, Start Num: 47

Candidate Starts for DanSyl44_81:

(Start: 47 @50883 has 23 MA's), (60, 50928), (64, 50961), (67, 50991), (71, 51042), (76, 51084), (77, 51090), (79, 51111), (82, 51123), (92, 51156), (98, 51165), (110, 51222), (112, 51231), (113, 51234), (115, 51258), (121, 51300), (123, 51321), (153, 51372), (154, 51378), (158, 51402), (159, 51405), (163, 51429), (165, 51438), (169, 51462), (174, 51504), (175, 51510), (179, 51528), (180, 51534), (183, 51561), (184, 51570), (187, 51582), (202, 51657),

Gene: DartGoblin_74 Start: 49011, Stop: 50099, Start Num: 24

Candidate Starts for DartGoblin_74:

(Start: 24 @49011 has 120 MA's), (25, 49017), (Start: 30 @49068 has 7 MA's), (Start: 35 @49137 has 1 MA's), (42, 49164), (60, 49221), (62, 49242), (63, 49245), (66, 49266), (69, 49278), (71, 49317), (73, 49341), (75, 49359), (76, 49368), (77, 49374), (79, 49395), (84, 49416), (85, 49419), (90, 49437), (108, 49500), (112, 49521), (113, 49524), (117, 49560), (118, 49563), (121, 49590), (122, 49599), (149, 49665), (173, 49809), (180, 49842), (183, 49869), (195, 49929), (196, 49932), (230, 50049),

Gene: DarthP_71 Start: 48900, Stop: 50003, Start Num: 23

Candidate Starts for DarthP_71:

(15, 48825), (16, 48834), (Start: 23 @48900 has 6 MA's), (25, 48909), (29, 48954), (Start: 35 @49017 has 1 MA's), (41, 49041), (53, 49065), (55, 49083), (62, 49116), (64, 49128), (66, 49140), (73, 49215), (79, 49269), (85, 49293), (112, 49395), (113, 49398), (116, 49425), (122, 49473), (133, 49527), (138, 49545), (165, 49647), (173, 49710), (178, 49731), (180, 49743), (182, 49767), (183, 49770), (188, 49794), (195, 49830), (228, 49938), (231, 49962), (232, 49965),

Gene: Dartin_74 Start: 49082, Stop: 50047, Start Num: 41

Candidate Starts for Dartin_74:

(Start: 24 @48944 has 120 MA's), (25, 48950), (29, 48995), (Start: 35 @49058 has 1 MA's), (41, 49082), (55, 49124), (61, 49151), (62, 49157), (63, 49160), (66, 49181), (73, 49253), (76, 49280), (77, 49286), (85, 49331), (108, 49412), (109, 49421), (112, 49433), (113, 49436), (114, 49439), (117, 49472), (121, 49502), (122, 49511), (138, 49589), (139, 49592), (154, 49628), (159, 49655), (163, 49679), (166, 49694), (173, 49754), (178, 49775), (180, 49787), (183, 49814), (190, 49850), (192, 49856), (224, 49961),

Gene: Deby_73 Start: 49136, Stop: 50242, Start Num: 24

Candidate Starts for Deby_73:

(Start: 24 @49136 has 120 MA's), (25, 49142), (Start: 30 @49193 has 7 MA's), (Start: 35 @49262 has 1 MA's), (36, 49268), (42, 49286), (53, 49310), (61, 49355), (62, 49361), (63, 49364), (66, 49385), (69, 49397), (73, 49460), (75, 49478), (76, 49487), (77, 49493), (79, 49514), (85, 49538), (90, 49556), (112, 49640), (113, 49643), (117, 49679), (118, 49682), (121, 49709), (122, 49718), (129, 49760), (136, 49775), (142, 49793), (173, 49949), (180, 49982), (183, 50009), (192, 50054), (195, 50072), (230, 50192),

Gene: Devera_81 Start: 50477, Stop: 51667, Start Num: 24

Candidate Starts for Devera_81:

(Start: 24 @50477 has 120 MA's), (25, 50483), (Start: 35 @50603 has 1 MA's), (42, 50630), (60, 50687), (62, 50708), (63, 50711), (66, 50732), (73, 50807), (76, 50834), (77, 50840), (79, 50861), (84, 50882), (85, 50885), (90, 50903), (108, 50966), (112, 50987), (113, 50990), (117, 51026), (121, 51056), (129, 51107), (136, 51122), (158, 51194), (161, 51209), (173, 51296), (183, 51356), (190, 51392), (192, 51398), (196, 51419), (212, 51491), (217, 51515), (219, 51542), (223, 51575),

Gene: DismalFunk_77 Start: 51116, Stop: 52018, Start Num: 50

Candidate Starts for DismalFunk_77:

(Start: 50 @51116 has 11 MA's), (60, 51158), (73, 51293), (77, 51326), (107, 51428), (108, 51431), (110, 51443), (113, 51455), (136, 51569), (153, 51608), (159, 51641), (169, 51698), (173, 51737), (180, 51770), (181, 51791), (183, 51797), (187, 51818), (193, 51848), (194, 51851), (203, 51896), (224, 51986), (227, 52001),

Gene: DismalStressor_77 Start: 51116, Stop: 52018, Start Num: 50

Candidate Starts for DismalStressor_77:

(Start: 50 @51116 has 11 MA's), (60, 51158), (73, 51293), (77, 51326), (107, 51428), (108, 51431), (110, 51443), (113, 51455), (136, 51569), (153, 51608), (159, 51641), (169, 51698), (173, 51737), (180, 51770), (181, 51791), (183, 51797), (187, 51818), (193, 51848), (194, 51851), (203, 51896), (224, 51986), (227, 52001),

Gene: Dole_78 Start: 50480, Stop: 51670, Start Num: 24

Candidate Starts for Dole_78:

(Start: 24 @50480 has 120 MA's), (25, 50486), (Start: 35 @50606 has 1 MA's), (42, 50633), (60, 50690), (62, 50711), (63, 50714), (66, 50735), (73, 50810), (76, 50837), (77, 50843), (79, 50864), (84, 50885), (85, 50888), (90, 50906), (108, 50969), (112, 50990), (113, 50993), (117, 51029), (121, 51059), (129, 51110), (136, 51125), (158, 51197), (161, 51212), (173, 51299), (183, 51359), (190, 51395), (192, 51401), (196, 51422), (212, 51494), (217, 51518), (219, 51545), (223, 51578),

Gene: DoubleChamp_63 Start: 46182, Stop: 47027, Start Num: 45

Candidate Starts for DoubleChamp_63:

(33, 46119), (Start: 45 @46182 has 25 MA's), (59, 46224), (62, 46248), (66, 46272), (73, 46344), (79, 46398), (89, 46431), (106, 46482), (108, 46488), (112, 46509), (113, 46512), (118, 46551), (130, 46626), (131, 46629), (141, 46659), (154, 46686), (163, 46737), (166, 46752), (173, 46809), (176, 46821), (189, 46896), (192, 46911), (195, 46929), (198, 46941), (204, 46965), (209, 46977),

Gene: Doughnut_77 Start: 50752, Stop: 51654, Start Num: 50

Candidate Starts for Doughnut_77:

(Start: 50 @50752 has 11 MA's), (60, 50794), (73, 50929), (76, 50956), (77, 50962), (107, 51064), (108, 51067), (110, 51079), (113, 51091), (136, 51205), (153, 51244), (159, 51277), (169, 51334), (173, 51373), (180, 51406), (181, 51427), (182, 51430), (183, 51433), (187, 51454), (193, 51484), (194, 51487), (203, 51532), (227, 51637),

Gene: DrHayes_73 Start: 49181, Stop: 50269, Start Num: 24

Candidate Starts for DrHayes_73:

(Start: 24 @49181 has 120 MA's), (25, 49187), (Start: 35 @49307 has 1 MA's), (42, 49334), (60, 49391), (62, 49412), (63, 49415), (66, 49436), (73, 49511), (76, 49538), (77, 49544), (79, 49565), (84, 49586), (85, 49589), (90, 49607), (112, 49691), (113, 49694), (117, 49730), (118, 49733), (121, 49760), (122, 49769), (149, 49835), (162, 49901), (167, 49922), (173, 49979), (180, 50012), (183, 50039), (195, 50099), (196, 50102), (230, 50219),

Gene: Durfee_73 Start: 48883, Stop: 50070, Start Num: 24

Candidate Starts for Durfee_73:

(Start: 24 @48883 has 120 MA's), (25, 48889), (Start: 35 @49009 has 1 MA's), (36, 49015), (42, 49033), (53, 49057), (61, 49102), (62, 49108), (63, 49111), (66, 49132), (69, 49144), (73, 49207), (76, 49234), (77, 49240), (79, 49261), (85, 49285), (90, 49303), (112, 49387), (113, 49390), (117, 49426), (118, 49429), (121, 49456), (122, 49465), (129, 49507), (167, 49639), (173, 49696), (183, 49756), (192, 49801), (194, 49807), (195, 49819), (212, 49894), (217, 49918), (219, 49945), (220, 49951), (221, 49966), (223, 49978), (230, 50020),

Gene: Edugator_65 Start: 47969, Stop: 48823, Start Num: 45

Candidate Starts for Edugator_65:

(20, 47777), (22, 47810), (33, 47906), (Start: 45 @47969 has 25 MA's), (46, 47972), (58, 48011), (59, 48014), (62, 48038), (66, 48062), (73, 48134), (79, 48188), (89, 48221), (106, 48272), (108, 48278), (112, 48299), (113, 48302), (118, 48341), (130, 48416), (131, 48419), (141, 48449), (163, 48527), (166, 48542), (173, 48599), (176, 48611), (182, 48656), (189, 48686), (192, 48701), (195, 48719), (198, 48731), (204, 48755),

Gene: Efra2_80 Start: 49519, Stop: 50703, Start Num: 24

Candidate Starts for Efra2_80:

(Start: 24 @49519 has 120 MA's), (25, 49525), (28, 49567), (29, 49570), (Start: 31 @49582 has 1 MA's), (Start: 35 @49633 has 1 MA's), (36, 49639), (42, 49660), (46, 49669), (52, 49681), (62, 49738), (63, 49741), (66, 49762), (73, 49837), (76, 49864), (77, 49870), (79, 49891), (84, 49912), (85, 49915), (112, 50017), (113, 50020), (117, 50056), (118, 50059), (121, 50086), (122, 50095), (129, 50137), (136, 50152), (145, 50173), (158, 50224), (159, 50227), (160, 50230), (173, 50326), (180, 50359), (183, 50386), (192, 50431), (195, 50449), (212, 50524), (219, 50575), (221, 50596), (222, 50599), (226, 50629), (233, 50674),

Gene: Ekdilam_68 Start: 49108, Stop: 50211, Start Num: 23

Candidate Starts for Ekdilam_68:

(15, 49033), (Start: 23 @49108 has 6 MA's), (25, 49117), (29, 49162), (Start: 45 @49255 has 25 MA's), (53, 49273), (55, 49291), (62, 49324), (64, 49336), (66, 49348), (73, 49423), (85, 49501), (112, 49603), (113, 49606), (122, 49681), (132, 49732), (148, 49771), (154, 49795), (173, 49918), (180, 49951), (182, 49975), (183, 49978), (188, 50002), (195, 50038), (228, 50146), (232, 50173), (234, 50188),

Gene: Ellie_69 Start: 48362, Stop: 49447, Start Num: 24

Candidate Starts for Ellie_69:

(Start: 24 @48362 has 120 MA's), (25, 48368), (29, 48413), (Start: 35 @48476 has 1 MA's), (41, 48500), (53, 48524), (55, 48542), (62, 48575), (63, 48578), (65, 48590), (66, 48599), (73, 48674), (77, 48707), (84, 48749), (109, 48842), (112, 48854), (113, 48857), (114, 48860), (118, 48896), (122, 48932), (130, 48971), (131, 48974), (173, 49154), (178, 49175), (180, 49187), (183, 49214), (232, 49409),

Gene: Emerson_76 Start: 49203, Stop: 50309, Start Num: 24

Candidate Starts for Emerson_76:

(Start: 24 @49203 has 120 MA's), (25, 49209), (Start: 35 @49329 has 1 MA's), (36, 49335), (38, 49344), (42, 49353), (53, 49377), (61, 49422), (62, 49428), (63, 49431), (66, 49452), (69, 49464), (73, 49527), (75, 49545), (76, 49554), (77, 49560), (79, 49581), (85, 49605), (112, 49707), (113, 49710), (117, 49746), (118, 49749), (121, 49776), (122, 49785), (129, 49827), (167, 49959), (173, 50016), (180, 50049), (183, 50076), (192, 50121), (195, 50139), (230, 50259),

Gene: Enkosi_62 Start: 48348, Stop: 49529, Start Num: 24

Candidate Starts for Enkosi_62:

(Start: 24 @48348 has 120 MA's), (25, 48354), (26, 48366), (Start: 35 @48462 has 1 MA's), (41, 48486), (Start: 48 @48498 has 1 MA's), (54, 48522), (55, 48528), (60, 48540), (61, 48555), (62, 48561), (63, 48564), (66, 48585), (68, 48594), (69, 48597), (72, 48651), (73, 48657), (75, 48675), (77, 48690), (79, 48711), (80, 48714), (85, 48735), (94, 48762), (96, 48768), (101, 48786), (108, 48816), (112, 48837), (113, 48840), (116, 48867), (117, 48876), (121, 48906), (122, 48915), (123, 48927), (134, 48972), (145, 48999), (147, 49002), (155, 49035), (157, 49050), (159, 49056), (163, 49080), (165, 49089), (167, 49098), (171, 49131), (173, 49152), (175, 49161), (176, 49164), (180, 49185), (183, 49212), (190, 49251), (192, 49257), (195, 49275), (196, 49278), (198, 49287), (207, 49323), (212, 49350), (213, 49353), (214, 49359), (217, 49374), (219, 49401), (221, 49422), (222, 49425), (223, 49434), (235, 49518), (236, 49521),

Gene: Eponine_80 Start: 50458, Stop: 51336, Start Num: 47

Candidate Starts for Eponine_80:

(Start: 47 @50458 has 23 MA's), (60, 50503), (64, 50536), (67, 50566), (71, 50617), (76, 50659), (77, 50665), (79, 50686), (82, 50698), (92, 50731), (98, 50740), (110, 50797), (112, 50806), (113, 50809), (115, 50833), (121, 50875), (123, 50896), (153, 50947), (154, 50953), (158, 50977), (159, 50980), (163, 51004), (165, 51013), (174, 51079), (179, 51103), (180, 51109), (183, 51136), (184, 51145), (187, 51157), (202, 51232),

Gene: Fefferhead_72 Start: 48571, Stop: 49677, Start Num: 24

Candidate Starts for Fefferhead_72:

(15, 48493), (Start: 24 @48571 has 120 MA's), (25, 48577), (29, 48622), (Start: 35 @48685 has 1 MA's), (53, 48733), (55, 48751), (62, 48784), (65, 48799), (66, 48808), (73, 48883), (77, 48916), (84, 48958), (109, 49051), (112, 49063), (113, 49066), (114, 49069), (118, 49105), (122, 49141), (130, 49180), (131, 49183), (173, 49363), (178, 49384), (180, 49396), (183, 49423), (232, 49618), (234, 49633),

Gene: Feyre_69 Start: 49943, Stop: 50788, Start Num: 45

Candidate Starts for Feyre_69:

(20, 49751), (22, 49784), (33, 49880), (Start: 45 @49943 has 25 MA's), (59, 49985), (62, 50009), (66, 50033), (73, 50105), (80, 50162), (89, 50192), (106, 50243), (112, 50270), (113, 50273), (118, 50312), (122, 50348), (123, 50360), (131, 50387), (143, 50420), (146, 50423), (150, 50432), (160, 50489), (166, 50525), (173, 50582), (176, 50594), (183, 50642), (188, 50666), (192, 50684), (195, 50702), (196, 50705), (198, 50714), (214, 50774),

Gene: Findley_77 Start: 51134, Stop: 52036, Start Num: 50

Candidate Starts for Findley_77:

(Start: 50 @51134 has 11 MA's), (60, 51176), (73, 51311), (77, 51344), (107, 51446), (108, 51449), (110, 51461), (113, 51473), (136, 51587), (153, 51626), (159, 51659), (173, 51755), (180, 51788), (181, 51809), (183, 51815), (187, 51836), (193, 51866), (194, 51869), (203, 51914), (224, 52004), (227, 52019),

Gene: Fionnbharth_78 Start: 49856, Stop: 50734, Start Num: 47

Candidate Starts for Fionnbharth_78:

(Start: 47 @49856 has 23 MA's), (60, 49901), (64, 49934), (67, 49964), (71, 50015), (76, 50057), (77, 50063), (79, 50084), (82, 50096), (92, 50129), (98, 50138), (110, 50195), (112, 50204), (113, 50207), (115, 50231), (121, 50273), (123, 50294), (153, 50345), (154, 50351), (158, 50375), (159, 50378), (163, 50402), (165, 50411), (174, 50477), (179, 50501), (180, 50507), (183, 50534), (184, 50543), (187, 50555), (202, 50630),

Gene: Ganymede_73 Start: 49093, Stop: 50280, Start Num: 24

Candidate Starts for Ganymede_73:

(Start: 24 @49093 has 120 MA's), (25, 49099), (Start: 35 @49219 has 1 MA's), (36, 49225), (53, 49267), (61, 49312), (62, 49318), (63, 49321), (66, 49342), (69, 49354), (73, 49417), (76, 49444), (77, 49450), (79, 49471), (85, 49495), (90, 49513), (112, 49597), (113, 49600), (117, 49636), (118, 49639), (121, 49666), (122, 49675), (129, 49717), (173, 49906), (183, 49966), (192, 50011), (194, 50017), (195, 50029), (212, 50104), (217, 50128), (219, 50155), (220, 50161), (221, 50176), (223, 50188), (230, 50230),

Gene: Gengar_66 Start: 47930, Stop: 48778, Start Num: 45

Candidate Starts for Gengar_66:

(Start: 45 @47930 has 25 MA's), (59, 47972), (62, 47996), (66, 48020), (73, 48092), (80, 48149), (89, 48179), (106, 48230), (112, 48257), (113, 48260), (118, 48299), (122, 48335), (123, 48347), (131, 48374), (143, 48407), (146, 48410), (150, 48419), (160, 48476), (163, 48497), (166, 48512), (173, 48569), (176, 48581), (177, 48587), (183, 48629), (188, 48653), (192, 48671), (195, 48689), (196,

48692), (198, 48701), (215, 48770),

Gene: Geraldini_77 Start: 49764, Stop: 50870, Start Num: 24

Candidate Starts for Geraldini_77:

(Start: 24 @49764 has 120 MA's), (25, 49770), (Start: 35 @49890 has 1 MA's), (36, 49896), (42, 49914), (53, 49938), (61, 49983), (62, 49989), (63, 49992), (66, 50013), (69, 50025), (73, 50088), (75, 50106), (76, 50115), (77, 50121), (79, 50142), (85, 50166), (90, 50184), (112, 50268), (113, 50271), (117, 50307), (118, 50310), (121, 50337), (122, 50346), (129, 50388), (167, 50520), (173, 50577), (180, 50610), (183, 50637), (192, 50682), (195, 50700), (224, 50787), (230, 50820),

Gene: Guanica15_79 Start: 49265, Stop: 50449, Start Num: 24

Candidate Starts for Guanica15_79:

(Start: 24 @49265 has 120 MA's), (25, 49271), (28, 49313), (29, 49316), (Start: 35 @49379 has 1 MA's), (36, 49385), (42, 49406), (46, 49415), (52, 49427), (62, 49484), (63, 49487), (66, 49508), (73, 49583), (75, 49601), (76, 49610), (77, 49616), (79, 49637), (84, 49658), (85, 49661), (112, 49763), (113, 49766), (117, 49802), (118, 49805), (121, 49832), (122, 49841), (129, 49883), (136, 49898), (145, 49919), (157, 49967), (163, 49997), (173, 50072), (178, 50093), (180, 50105), (183, 50132), (190, 50171), (192, 50177), (195, 50195), (212, 50270), (221, 50342), (222, 50345), (223, 50354), (233, 50420),

Gene: Guillsminger_67 Start: 47872, Stop: 48717, Start Num: 45

Candidate Starts for Guillsminger_67:

(Start: 45 @47872 has 25 MA's), (59, 47914), (62, 47938), (66, 47962), (73, 48034), (80, 48091), (89, 48121), (106, 48172), (112, 48199), (113, 48202), (118, 48241), (122, 48277), (123, 48289), (131, 48316), (143, 48349), (146, 48352), (150, 48361), (160, 48418), (163, 48439), (166, 48454), (173, 48511), (176, 48523), (188, 48595), (189, 48598), (192, 48613), (195, 48631), (198, 48643),

Gene: Hammy_71 Start: 48885, Stop: 49988, Start Num: 23

Candidate Starts for Hammy_71:

(15, 48810), (16, 48819), (Start: 23 @48885 has 6 MA's), (25, 48894), (29, 48939), (Start: 35 @49002 has 1 MA's), (41, 49026), (53, 49050), (55, 49068), (62, 49101), (64, 49113), (66, 49125), (73, 49200), (79, 49254), (84, 49275), (85, 49278), (112, 49380), (113, 49383), (116, 49410), (122, 49458), (133, 49512), (138, 49530), (165, 49632), (173, 49695), (180, 49728), (182, 49752), (183, 49755), (188, 49779), (195, 49815), (228, 49923), (231, 49947), (232, 49950),

Gene: HedwigODU_73 Start: 48731, Stop: 49918, Start Num: 24

Candidate Starts for HedwigODU_73:

(Start: 24 @48731 has 120 MA's), (25, 48737), (Start: 35 @48857 has 1 MA's), (36, 48863), (Start: 48 @48893 has 1 MA's), (53, 48905), (61, 48950), (62, 48956), (63, 48959), (66, 48980), (69, 48992), (73, 49055), (75, 49073), (76, 49082), (77, 49088), (79, 49109), (85, 49133), (90, 49151), (112, 49235), (113, 49238), (117, 49274), (118, 49277), (121, 49304), (122, 49313), (129, 49355), (167, 49487), (173, 49544), (183, 49604), (192, 49649), (194, 49655), (195, 49667), (212, 49742), (217, 49766), (219, 49793), (220, 49799), (221, 49814), (223, 49826), (230, 49868),

Gene: Heftyboy_67 Start: 48251, Stop: 49087, Start Num: 45

Candidate Starts for Heftyboy_67:

(20, 48059), (22, 48092), (33, 48188), (Start: 45 @48251 has 25 MA's), (59, 48293), (62, 48317), (66, 48341), (72, 48407), (73, 48413), (80, 48470), (89, 48500), (106, 48551), (112, 48578), (113, 48581), (118, 48620), (122, 48656), (123, 48668), (130, 48695), (131, 48698), (133, 48704), (136, 48713), (141, 48728), (154, 48755), (163, 48806), (166, 48821), (173, 48878), (176, 48890), (177, 48896), (183, 48938), (188, 48962), (192, 48980), (195, 48998), (196, 49001), (198, 49010),

Gene: Homura_72 Start: 48686, Stop: 49873, Start Num: 24

Candidate Starts for Homura_72:

(Start: 24 @48686 has 120 MA's), (25, 48692), (Start: 35 @48812 has 1 MA's), (36, 48818), (42, 48836), (53, 48860), (61, 48905), (62, 48911), (63, 48914), (66, 48935), (69, 48947), (73, 49010), (76, 49037), (77, 49043), (79, 49064), (85, 49088), (90, 49106), (112, 49190), (113, 49193), (117, 49229), (118, 49232), (121, 49259), (122, 49268), (129, 49310), (167, 49442), (173, 49499), (183, 49559), (192, 49604), (194, 49610), (195, 49622), (212, 49697), (217, 49721), (219, 49748), (220, 49754), (221, 49769), (223, 49781), (230, 49823),

Gene: Hurricane_74 Start: 48983, Stop: 49900, Start Num: 49

Candidate Starts for Hurricane_74:

(Start: 31 @48890 has 1 MA's), (32, 48911), (Start: 49 @48983 has 9 MA's), (58, 49019), (62, 49046), (66, 49070), (70, 49091), (73, 49142), (76, 49169), (95, 49241), (102, 49265), (108, 49295), (113, 49319), (115, 49343), (117, 49355), (122, 49394), (125, 49415), (154, 49484), (159, 49511), (160, 49514), (167, 49553), (168, 49565), (173, 49607), (180, 49640), (184, 49679), (199, 49754),

Gene: Hyperbowlee_72 Start: 48883, Stop: 50070, Start Num: 24

Candidate Starts for Hyperbowlee_72:

(Start: 24 @48883 has 120 MA's), (25, 48889), (Start: 35 @49009 has 1 MA's), (36, 49015), (42, 49033), (53, 49057), (61, 49102), (62, 49108), (63, 49111), (66, 49132), (69, 49144), (73, 49207), (76, 49234), (77, 49240), (79, 49261), (85, 49285), (90, 49303), (112, 49387), (113, 49390), (117, 49426), (118, 49429), (121, 49456), (122, 49465), (129, 49507), (167, 49639), (173, 49696), (183, 49756), (192, 49801), (194, 49807), (195, 49819), (212, 49894), (217, 49918), (219, 49945), (220, 49951), (221, 49966), (223, 49978), (230, 50020),

Gene: Illumine_79 Start: 50479, Stop: 51669, Start Num: 24

Candidate Starts for Illumine_79:

(Start: 24 @50479 has 120 MA's), (25, 50485), (Start: 35 @50605 has 1 MA's), (42, 50632), (60, 50689), (62, 50710), (63, 50713), (66, 50734), (73, 50809), (76, 50836), (77, 50842), (79, 50863), (84, 50884), (85, 50887), (90, 50905), (108, 50968), (112, 50989), (113, 50992), (117, 51028), (121, 51058), (129, 51109), (136, 51124), (158, 51196), (161, 51211), (173, 51298), (183, 51358), (190, 51394), (192, 51400), (196, 51421), (212, 51493), (217, 51517), (219, 51544), (223, 51577),

Gene: Inky_73 Start: 48686, Stop: 49873, Start Num: 24

Candidate Starts for Inky_73:

(Start: 24 @48686 has 120 MA's), (25, 48692), (Start: 35 @48812 has 1 MA's), (36, 48818), (42, 48836), (53, 48860), (61, 48905), (62, 48911), (63, 48914), (66, 48935), (69, 48947), (73, 49010), (76, 49037), (77, 49043), (79, 49064), (85, 49088), (90, 49106), (112, 49190), (113, 49193), (117, 49229), (118, 49232), (121, 49259), (122, 49268), (129, 49310), (167, 49442), (173, 49499), (183, 49559), (192, 49604), (194, 49610), (195, 49622), (212, 49697), (217, 49721), (219, 49748), (220, 49754), (221, 49769), (223, 49781), (230, 49823),

Gene: InvictusManeo_64 Start: 46225, Stop: 47070, Start Num: 45

Candidate Starts for InvictusManeo_64:

(33, 46162), (Start: 45 @46225 has 25 MA's), (59, 46267), (62, 46291), (66, 46315), (73, 46387), (79, 46441), (89, 46474), (106, 46525), (108, 46531), (112, 46552), (113, 46555), (118, 46594), (130, 46669), (131, 46672), (141, 46702), (154, 46729), (163, 46780), (166, 46795), (173, 46852), (176, 46864), (189, 46939), (192, 46954), (195, 46972), (198, 46984), (204, 47008), (209, 47020),

Gene: JAWS_72 Start: 48855, Stop: 49835, Start Num: 35

Candidate Starts for JAWS_72:

(2, 48561), (5, 48585), (8, 48594), (11, 48606), (12, 48612), (15, 48651), (Start: 24 @48729 has 120 MA's), (25, 48735), (Start: 35 @48855 has 1 MA's), (36, 48861), (38, 48870), (42, 48879), (53, 48903), (61, 48948), (62, 48954), (63, 48957), (66, 48978), (69, 48990), (73, 49053), (76, 49080), (77, 49086),

(79, 49107), (85, 49131), (90, 49149), (103, 49185), (112, 49233), (113, 49236), (117, 49272), (118, 49275), (121, 49302), (122, 49311), (129, 49353), (136, 49368), (142, 49386), (167, 49485), (173, 49542), (180, 49575), (183, 49602), (192, 49647), (195, 49665), (230, 49785),

Gene: JF1_78 Start: 49773, Stop: 50651, Start Num: 47

Candidate Starts for JF1_78:

(Start: 47 @49773 has 23 MA's), (60, 49818), (64, 49851), (67, 49881), (71, 49932), (76, 49974), (77, 49980), (82, 50013), (92, 50046), (98, 50055), (110, 50112), (112, 50121), (113, 50124), (115, 50148), (121, 50190), (123, 50211), (153, 50262), (154, 50268), (158, 50292), (159, 50295), (163, 50319), (165, 50328), (174, 50394), (175, 50400), (179, 50418), (180, 50424), (183, 50451), (184, 50460), (187, 50472), (202, 50547),

Gene: Jarvi_73 Start: 48686, Stop: 49873, Start Num: 24

Candidate Starts for Jarvi_73:

(Start: 24 @48686 has 120 MA's), (25, 48692), (Start: 35 @48812 has 1 MA's), (36, 48818), (42, 48836), (53, 48860), (61, 48905), (62, 48911), (63, 48914), (66, 48935), (69, 48947), (73, 49010), (76, 49037), (77, 49043), (79, 49064), (85, 49088), (90, 49106), (112, 49190), (113, 49193), (117, 49229), (118, 49232), (121, 49259), (122, 49268), (129, 49310), (167, 49442), (173, 49499), (183, 49559), (192, 49604), (194, 49610), (195, 49622), (212, 49697), (217, 49721), (219, 49748), (220, 49754), (221, 49769), (223, 49781), (230, 49823),

Gene: Jayhawk_76 Start: 49229, Stop: 50335, Start Num: 24

Candidate Starts for Jayhawk_76:

(Start: 24 @49229 has 120 MA's), (25, 49235), (Start: 30 @49286 has 7 MA's), (Start: 35 @49355 has 1 MA's), (36, 49361), (42, 49379), (53, 49403), (61, 49448), (62, 49454), (63, 49457), (66, 49478), (69, 49490), (73, 49553), (75, 49571), (76, 49580), (77, 49586), (79, 49607), (85, 49631), (90, 49649), (112, 49733), (113, 49736), (117, 49772), (118, 49775), (121, 49802), (122, 49811), (129, 49853), (136, 49868), (142, 49886), (167, 49985), (173, 50042), (180, 50075), (183, 50102), (192, 50147), (195, 50165), (230, 50285),

Gene: Jeckyll_73 Start: 48686, Stop: 49873, Start Num: 24

Candidate Starts for Jeckyll_73:

(Start: 24 @48686 has 120 MA's), (25, 48692), (Start: 35 @48812 has 1 MA's), (36, 48818), (42, 48836), (53, 48860), (61, 48905), (62, 48911), (63, 48914), (66, 48935), (69, 48947), (73, 49010), (76, 49037), (77, 49043), (79, 49064), (85, 49088), (90, 49106), (112, 49190), (113, 49193), (117, 49229), (118, 49232), (121, 49259), (122, 49268), (129, 49310), (167, 49442), (173, 49499), (183, 49559), (192, 49604), (194, 49610), (195, 49622), (212, 49697), (217, 49721), (219, 49748), (220, 49754), (221, 49769), (223, 49781), (230, 49823),

Gene: Joy99_74 Start: 48815, Stop: 50002, Start Num: 24

Candidate Starts for Joy99_74:

(Start: 24 @48815 has 120 MA's), (25, 48821), (Start: 35 @48941 has 1 MA's), (36, 48947), (Start: 48 @48977 has 1 MA's), (53, 48989), (61, 49034), (62, 49040), (63, 49043), (66, 49064), (69, 49076), (73, 49139), (75, 49157), (76, 49166), (77, 49172), (79, 49193), (85, 49217), (90, 49235), (112, 49319), (113, 49322), (117, 49358), (118, 49361), (121, 49388), (122, 49397), (129, 49439), (167, 49571), (173, 49628), (183, 49688), (192, 49733), (194, 49739), (195, 49751), (212, 49826), (217, 49850), (219, 49877), (220, 49883), (221, 49898), (223, 49910), (230, 49952),

Gene: Juliette_80 Start: 49877, Stop: 50755, Start Num: 47

Candidate Starts for Juliette_80:

(Start: 47 @49877 has 23 MA's), (60, 49922), (64, 49955), (67, 49985), (71, 50036), (76, 50078), (77, 50084), (80, 50108), (82, 50117), (92, 50150), (98, 50159), (110, 50216), (112, 50225), (113, 50228), (115, 50252), (121, 50294), (123, 50315), (153, 50366), (154, 50372), (158, 50396), (159, 50399),

(163, 50423), (165, 50432), (166, 50438), (169, 50456), (174, 50498), (179, 50522), (180, 50528), (183, 50555), (184, 50564), (187, 50576), (202, 50651),

Gene: Keshu_76 Start: 49138, Stop: 50055, Start Num: 49

Candidate Starts for Keshu_76:

(Start: 31 @49045 has 1 MA's), (32, 49066), (Start: 49 @49138 has 9 MA's), (58, 49174), (62, 49201), (66, 49225), (69, 49237), (73, 49297), (102, 49420), (113, 49474), (115, 49498), (117, 49510), (122, 49549), (154, 49639), (159, 49666), (160, 49669), (167, 49708), (168, 49720), (173, 49762), (180, 49795), (184, 49834), (199, 49909), (206, 49939),

Gene: KiSi_76 Start: 49435, Stop: 50466, Start Num: 30

Candidate Starts for KiSi_76:

(21, 49360), (Start: 23 @49375 has 6 MA's), (Start: 30 @49435 has 7 MA's), (Start: 31 @49441 has 1 MA's), (42, 49519), (62, 49600), (66, 49624), (73, 49699), (75, 49717), (87, 49783), (109, 49867), (112, 49879), (113, 49882), (122, 49957), (130, 50002), (139, 50035), (155, 50074), (163, 50119), (166, 50134), (173, 50191), (180, 50224), (194, 50302), (195, 50314), (200, 50332), (233, 50437),

Gene: Kratio_64 Start: 45964, Stop: 46821, Start Num: 45

Candidate Starts for Kratio_64:

(33, 45901), (Start: 45 @45964 has 25 MA's), (59, 46006), (62, 46030), (66, 46054), (73, 46126), (79, 46180), (89, 46213), (106, 46264), (108, 46270), (112, 46291), (113, 46294), (118, 46333), (130, 46408), (131, 46411), (141, 46441), (166, 46534), (173, 46591), (176, 46603), (182, 46648), (189, 46678), (192, 46693), (195, 46711), (198, 46723), (204, 46747), (209, 46759),

Gene: Kraw_78 Start: 49580, Stop: 50458, Start Num: 47

Candidate Starts for Kraw_78:

(Start: 47 @49580 has 23 MA's), (60, 49625), (64, 49658), (67, 49688), (71, 49739), (76, 49781), (77, 49787), (82, 49820), (92, 49853), (98, 49862), (110, 49919), (112, 49928), (113, 49931), (115, 49955), (121, 49997), (123, 50018), (153, 50069), (154, 50075), (158, 50099), (159, 50102), (163, 50126), (165, 50135), (169, 50159), (174, 50201), (175, 50207), (179, 50225), (180, 50231), (183, 50258), (184, 50267), (187, 50279), (202, 50354),

Gene: Krueger_77 Start: 48733, Stop: 49833, Start Num: 24

Candidate Starts for Krueger_77:

(15, 48655), (Start: 24 @48733 has 120 MA's), (25, 48739), (29, 48784), (Start: 35 @48847 has 1 MA's), (41, 48871), (61, 48940), (65, 48961), (66, 48970), (69, 48982), (73, 49042), (77, 49075), (79, 49096), (85, 49120), (112, 49222), (117, 49261), (133, 49354), (139, 49378), (154, 49417), (156, 49432), (170, 49510), (173, 49540), (175, 49549), (177, 49558), (178, 49561), (180, 49573), (183, 49600), (192, 49642), (224, 49747), (232, 49795),

Gene: Larva_67 Start: 47423, Stop: 48277, Start Num: 45

Candidate Starts for Larva_67:

(20, 47231), (22, 47264), (33, 47360), (Start: 45 @47423 has 25 MA's), (46, 47426), (58, 47465), (59, 47468), (62, 47492), (66, 47516), (73, 47588), (79, 47642), (89, 47675), (106, 47726), (108, 47732), (112, 47753), (113, 47756), (118, 47795), (130, 47870), (131, 47873), (141, 47903), (163, 47981), (166, 47996), (173, 48053), (176, 48065), (182, 48110), (189, 48140), (192, 48155), (195, 48173), (198, 48185), (204, 48209),

Gene: LastHope_79 Start: 48375, Stop: 49559, Start Num: 24

Candidate Starts for LastHope_79:

(13, 48264), (Start: 24 @48375 has 120 MA's), (25, 48381), (27, 48399), (28, 48423), (29, 48426), (Start: 31 @48438 has 1 MA's), (Start: 35 @48489 has 1 MA's), (36, 48495), (42, 48516), (60, 48573), (62, 48594), (63, 48597), (66, 48618), (73, 48693), (75, 48711), (77, 48726), (79, 48747), (84, 48768),

(85, 48771), (90, 48789), (99, 48813), (112, 48873), (113, 48876), (117, 48912), (118, 48915), (121, 48942), (122, 48951), (129, 48993), (136, 49008), (157, 49077), (163, 49107), (165, 49116), (167, 49125), (173, 49182), (183, 49242), (192, 49287), (194, 49293), (195, 49305), (212, 49380), (217, 49404), (219, 49431), (220, 49437), (221, 49452), (223, 49464),

Gene: LaterM_73 Start: 49344, Stop: 50534, Start Num: 24

Candidate Starts for LaterM_73:

(Start: 24 @49344 has 120 MA's), (25, 49350), (Start: 35 @49470 has 1 MA's), (42, 49497), (60, 49554), (62, 49575), (63, 49578), (66, 49599), (73, 49674), (75, 49692), (76, 49701), (77, 49707), (79, 49728), (84, 49749), (85, 49752), (90, 49770), (112, 49854), (113, 49857), (117, 49893), (121, 49923), (122, 49932), (129, 49974), (136, 49989), (173, 50163), (183, 50223), (190, 50259), (192, 50265), (196, 50286), (212, 50358), (217, 50382), (219, 50409),

Gene: Lavahound_70 Start: 49476, Stop: 50582, Start Num: 24

Candidate Starts for Lavahound_70:

(15, 49398), (Start: 24 @49476 has 120 MA's), (25, 49482), (29, 49527), (Start: 35 @49590 has 1 MA's), (53, 49638), (55, 49656), (62, 49689), (63, 49692), (65, 49704), (66, 49713), (73, 49788), (77, 49821), (84, 49863), (109, 49956), (112, 49968), (113, 49971), (114, 49974), (118, 50010), (122, 50046), (130, 50085), (131, 50088), (173, 50268), (178, 50289), (180, 50301), (183, 50328), (232, 50523), (234, 50538),

Gene: LeMond_75 Start: 49039, Stop: 50070, Start Num: 30

Candidate Starts for LeMond_75:

(21, 48964), (Start: 23 @48979 has 6 MA's), (Start: 30 @49039 has 7 MA's), (Start: 31 @49045 has 1 MA's), (42, 49123), (60, 49183), (62, 49204), (66, 49228), (73, 49303), (75, 49321), (87, 49387), (109, 49471), (112, 49483), (113, 49486), (122, 49561), (130, 49606), (139, 49639), (155, 49678), (163, 49723), (166, 49738), (173, 49795), (180, 49828), (194, 49906), (233, 50041),

Gene: Lea83_74 Start: 49074, Stop: 49991, Start Num: 49

Candidate Starts for Lea83_74:

(Start: 31 @48981 has 1 MA's), (Start: 49 @49074 has 9 MA's), (58, 49110), (66, 49161), (70, 49182), (76, 49260), (102, 49356), (113, 49410), (115, 49434), (117, 49446), (122, 49485), (126, 49512), (154, 49575), (159, 49602), (160, 49605), (167, 49644), (168, 49656), (173, 49698), (180, 49731), (184, 49770), (199, 49845),

Gene: Lebo14_77 Start: 50030, Stop: 50908, Start Num: 47

Candidate Starts for Lebo14_77:

(Start: 47 @50030 has 23 MA's), (60, 50075), (64, 50108), (67, 50138), (71, 50189), (76, 50231), (77, 50237), (79, 50258), (82, 50270), (92, 50303), (98, 50312), (110, 50369), (112, 50378), (113, 50381), (115, 50405), (121, 50447), (123, 50468), (153, 50519), (154, 50525), (158, 50549), (159, 50552), (163, 50576), (165, 50585), (169, 50609), (174, 50651), (175, 50657), (179, 50675), (180, 50681), (183, 50708), (184, 50717), (187, 50729), (202, 50804),

Gene: Leston_66 Start: 48001, Stop: 48834, Start Num: 45

Candidate Starts for Leston_66:

(20, 47809), (22, 47842), (33, 47938), (Start: 45 @48001 has 25 MA's), (59, 48043), (62, 48067), (66, 48091), (73, 48163), (80, 48220), (89, 48250), (106, 48301), (112, 48328), (113, 48331), (118, 48370), (122, 48406), (123, 48418), (130, 48445), (131, 48448), (133, 48454), (141, 48478), (160, 48535), (163, 48556), (166, 48571), (173, 48628), (176, 48640), (188, 48712), (189, 48715), (192, 48730), (195, 48748), (198, 48760),

Gene: LilDirt_65 Start: 45983, Stop: 46828, Start Num: 45

Candidate Starts for LilDirt_65:

(33, 45920), (Start: 45 @45983 has 25 MA's), (59, 46025), (62, 46049), (66, 46073), (73, 46145), (79, 46199), (89, 46232), (106, 46283), (108, 46289), (112, 46310), (113, 46313), (118, 46352), (130, 46427), (131, 46430), (141, 46460), (154, 46487), (163, 46538), (166, 46553), (173, 46610), (176, 46622), (189, 46697), (192, 46712), (195, 46730), (198, 46742), (204, 46766), (209, 46778),

Gene: LilPharaoh_61 Start: 45463, Stop: 46644, Start Num: 24

Candidate Starts for LilPharaoh_61:

(Start: 24 @45463 has 120 MA's), (25, 45469), (26, 45481), (Start: 35 @45577 has 1 MA's), (41, 45601), (Start: 48 @45613 has 1 MA's), (54, 45637), (55, 45643), (60, 45655), (61, 45670), (62, 45676), (63, 45679), (66, 45700), (68, 45709), (69, 45712), (72, 45766), (73, 45772), (75, 45790), (77, 45805), (79, 45826), (80, 45829), (85, 45850), (94, 45877), (96, 45883), (101, 45901), (108, 45931), (112, 45952), (113, 45955), (116, 45982), (117, 45991), (121, 46021), (122, 46030), (123, 46042), (134, 46087), (145, 46114), (147, 46117), (155, 46150), (157, 46165), (159, 46171), (163, 46195), (165, 46204), (167, 46213), (171, 46246), (173, 46267), (175, 46276), (176, 46279), (180, 46300), (183, 46327), (190, 46366), (192, 46372), (195, 46390), (196, 46393), (198, 46402), (207, 46438), (212, 46465), (213, 46468), (214, 46474), (217, 46489), (219, 46516), (221, 46537), (222, 46540), (223, 46549), (235, 46633), (236, 46636),

Gene: LindNT_72 Start: 49236, Stop: 50336, Start Num: 24

Candidate Starts for LindNT_72:

(15, 49158), (16, 49167), (Start: 24 @49236 has 120 MA's), (25, 49242), (Start: 35 @49350 has 1 MA's), (42, 49377), (60, 49434), (62, 49455), (63, 49458), (66, 49479), (69, 49491), (73, 49554), (76, 49581), (77, 49587), (79, 49608), (84, 49629), (85, 49632), (90, 49650), (112, 49734), (113, 49737), (117, 49773), (118, 49776), (121, 49803), (122, 49812), (129, 49854), (145, 49890), (158, 49941), (167, 49986), (173, 50043), (180, 50076), (183, 50103), (190, 50142), (195, 50166), (230, 50286),

Gene: Llorens_73 Start: 48686, Stop: 49873, Start Num: 24

Candidate Starts for Llorens_73:

(Start: 24 @48686 has 120 MA's), (25, 48692), (Start: 35 @48812 has 1 MA's), (36, 48818), (42, 48836), (53, 48860), (61, 48905), (62, 48911), (63, 48914), (66, 48935), (69, 48947), (73, 49010), (76, 49037), (77, 49043), (79, 49064), (85, 49088), (90, 49106), (112, 49190), (113, 49193), (117, 49229), (118, 49232), (121, 49259), (122, 49268), (129, 49310), (167, 49442), (173, 49499), (183, 49559), (192, 49604), (194, 49610), (195, 49622), (212, 49697), (217, 49721), (219, 49748), (220, 49754), (221, 49769), (223, 49781), (230, 49823),

Gene: Lunahalos_73 Start: 48686, Stop: 49873, Start Num: 24

Candidate Starts for Lunahalos_73:

(Start: 24 @48686 has 120 MA's), (25, 48692), (Start: 35 @48812 has 1 MA's), (36, 48818), (42, 48836), (53, 48860), (61, 48905), (62, 48911), (63, 48914), (66, 48935), (69, 48947), (73, 49010), (76, 49037), (77, 49043), (79, 49064), (85, 49088), (90, 49106), (112, 49190), (113, 49193), (117, 49229), (118, 49232), (121, 49259), (122, 49268), (129, 49310), (167, 49442), (173, 49499), (183, 49559), (192, 49604), (194, 49610), (195, 49622), (212, 49697), (217, 49721), (219, 49748), (220, 49754), (221, 49769), (223, 49781), (230, 49823),

Gene: MacKat_70 Start: 44669, Stop: 45856, Start Num: 24

Candidate Starts for MacKat_70:

(Start: 24 @44669 has 120 MA's), (25, 44675), (Start: 30 @44726 has 7 MA's), (Start: 35 @44795 has 1 MA's), (36, 44801), (42, 44819), (53, 44843), (61, 44888), (62, 44894), (63, 44897), (66, 44918), (69, 44930), (73, 44993), (75, 45011), (76, 45020), (77, 45026), (79, 45047), (85, 45071), (90, 45089), (112, 45173), (113, 45176), (117, 45212), (118, 45215), (121, 45242), (122, 45251), (129, 45293), (136, 45308), (173, 45482), (183, 45542), (192, 45587), (194, 45593), (195, 45605), (212, 45680), (217, 45704), (219, 45731), (220, 45737), (221, 45752), (223, 45764), (230, 45806),

Gene: MacnCheese_76 Start: 49599, Stop: 50501, Start Num: 49

Candidate Starts for MacnCheese_76:

(Start: 49 @49599 has 9 MA's), (58, 49635), (62, 49662), (66, 49686), (73, 49758), (100, 49875), (102, 49881), (111, 49929), (115, 49959), (117, 49971), (120, 49998), (122, 50010), (162, 50142), (167, 50163), (168, 50175), (173, 50217), (180, 50250), (184, 50289), (199, 50364), (202, 50382),

Gene: MalagasyRose_71 Start: 47350, Stop: 48273, Start Num: 44

Candidate Starts for MalagasyRose_71:

(Start: 44 @47350 has 1 MA's), (51, 47365), (59, 47404), (66, 47452), (70, 47473), (71, 47503), (72, 47521), (74, 47542), (79, 47578), (90, 47623), (91, 47626), (93, 47629), (104, 47656), (112, 47698), (116, 47728), (117, 47737), (122, 47776), (125, 47797), (149, 47842), (151, 47845), (157, 47881), (159, 47887), (167, 47929), (168, 47941), (172, 47965), (173, 47983), (180, 48016), (183, 48043), (185, 48052), (191, 48085), (192, 48088), (201, 48124), (207, 48148), (208, 48151), (217, 48199), (218, 48208), (229, 48250),

Gene: Malthus_79 Start: 49580, Stop: 50458, Start Num: 47

Candidate Starts for Malthus_79:

(Start: 47 @49580 has 23 MA's), (60, 49625), (64, 49658), (67, 49688), (71, 49739), (76, 49781), (77, 49787), (82, 49820), (92, 49853), (98, 49862), (110, 49919), (112, 49928), (113, 49931), (115, 49955), (121, 49997), (123, 50018), (153, 50069), (154, 50075), (158, 50099), (159, 50102), (163, 50126), (165, 50135), (169, 50159), (174, 50201), (175, 50207), (179, 50225), (180, 50231), (183, 50258), (184, 50267), (187, 50279), (202, 50354),

Gene: Marcoliusprime_76 Start: 51116, Stop: 52018, Start Num: 50

Candidate Starts for Marcoliusprime_76:

(Start: 50 @51116 has 11 MA's), (60, 51158), (73, 51293), (77, 51326), (107, 51428), (108, 51431), (110, 51443), (113, 51455), (136, 51569), (153, 51608), (159, 51641), (169, 51698), (173, 51737), (180, 51770), (181, 51791), (183, 51797), (187, 51818), (193, 51848), (194, 51851), (203, 51896), (224, 51986), (227, 52001),

Gene: MarkPhew_74 Start: 48544, Stop: 49581, Start Num: 30

Candidate Starts for MarkPhew_74:

(21, 48469), (Start: 23 @48484 has 6 MA's), (Start: 30 @48544 has 7 MA's), (Start: 31 @48550 has 1 MA's), (42, 48628), (53, 48646), (62, 48697), (66, 48721), (73, 48796), (75, 48814), (80, 48853), (87, 48880), (96, 48907), (109, 48964), (113, 48979), (118, 49018), (122, 49054), (137, 49126), (144, 49138), (155, 49171), (165, 49225), (173, 49288), (180, 49321), (194, 49399), (195, 49411), (230, 49528), (232, 49543), (235, 49570),

Gene: Marshawn_71 Start: 48922, Stop: 49965, Start Num: 31

Candidate Starts for Marshawn_71:

(Start: 30 @48916 has 7 MA's), (Start: 31 @48922 has 1 MA's), (42, 49000), (Start: 45 @49006 has 25 MA's), (60, 49060), (63, 49084), (66, 49105), (73, 49180), (75, 49198), (87, 49264), (96, 49291), (112, 49360), (113, 49363), (117, 49399), (118, 49402), (122, 49438), (134, 49492), (137, 49510), (165, 49609), (173, 49672), (182, 49729), (183, 49732), (192, 49777), (196, 49798), (232, 49927),

Gene: McMater_74 Start: 49082, Stop: 50047, Start Num: 41

Candidate Starts for McMater_74:

(Start: 24 @48944 has 120 MA's), (25, 48950), (29, 48995), (Start: 35 @49058 has 1 MA's), (41, 49082), (55, 49124), (61, 49151), (62, 49157), (63, 49160), (66, 49181), (73, 49253), (76, 49280), (77, 49286), (85, 49331), (108, 49412), (109, 49421), (112, 49433), (113, 49436), (114, 49439), (117, 49472), (121, 49502), (122, 49511), (138, 49589), (139, 49592), (154, 49628), (159, 49655), (163, 49679), (166, 49694), (173, 49754), (178, 49775), (180, 49787), (183, 49814), (190, 49850), (192, 49856), (224, 49961),

Gene: Mdavu_61 Start: 45739, Stop: 46920, Start Num: 24

Candidate Starts for Mdavu_61:

(Start: 24 @45739 has 120 MA's), (25, 45745), (26, 45757), (Start: 35 @45853 has 1 MA's), (41, 45877), (Start: 48 @45889 has 1 MA's), (54, 45913), (55, 45919), (60, 45931), (61, 45946), (62, 45952), (63, 45955), (66, 45976), (68, 45985), (69, 45988), (72, 46042), (73, 46048), (75, 46066), (77, 46081), (79, 46102), (80, 46105), (85, 46126), (94, 46153), (96, 46159), (101, 46177), (108, 46207), (112, 46228), (113, 46231), (116, 46258), (117, 46267), (121, 46297), (122, 46306), (123, 46318), (134, 46363), (145, 46390), (147, 46393), (155, 46426), (157, 46441), (159, 46447), (163, 46471), (165, 46480), (167, 46489), (171, 46522), (173, 46543), (175, 46552), (176, 46555), (180, 46576), (183, 46603), (190, 46642), (192, 46648), (195, 46666), (196, 46669), (198, 46678), (207, 46714), (212, 46741), (213, 46744), (214, 46750), (217, 46765), (219, 46792), (221, 46813), (222, 46816), (223, 46825), (235, 46909), (236, 46912),

Gene: MeaningOfLife_75 Start: 49638, Stop: 50825, Start Num: 24

Candidate Starts for MeaningOfLife_75:

(Start: 24 @49638 has 120 MA's), (25, 49644), (Start: 30 @49695 has 7 MA's), (Start: 35 @49764 has 1 MA's), (36, 49770), (38, 49779), (42, 49788), (53, 49812), (61, 49857), (62, 49863), (63, 49866), (66, 49887), (69, 49899), (73, 49962), (75, 49980), (76, 49989), (77, 49995), (79, 50016), (85, 50040), (90, 50058), (112, 50142), (113, 50145), (117, 50181), (118, 50184), (121, 50211), (122, 50220), (129, 50262), (136, 50277), (142, 50295), (167, 50394), (173, 50451), (183, 50511), (192, 50556), (194, 50562), (195, 50574), (212, 50649), (217, 50673), (219, 50700), (220, 50706), (221, 50721), (223, 50733), (230, 50775),

Gene: Megsy_75 Start: 48863, Stop: 49963, Start Num: 24

Candidate Starts for Megsy_75:

(2, 48695), (7, 48725), (8, 48728), (12, 48746), (15, 48785), (Start: 24 @48863 has 120 MA's), (25, 48869), (Start: 35 @48977 has 1 MA's), (42, 49004), (60, 49061), (62, 49082), (63, 49085), (66, 49106), (69, 49118), (73, 49181), (75, 49199), (76, 49208), (77, 49214), (78, 49220), (79, 49235), (84, 49256), (85, 49259), (90, 49277), (112, 49361), (113, 49364), (116, 49391), (117, 49400), (121, 49430), (122, 49439), (129, 49481), (145, 49517), (158, 49568), (167, 49613), (173, 49670), (180, 49703), (183, 49730), (190, 49769), (195, 49793), (230, 49913),

Gene: Milly_77 Start: 51107, Stop: 52009, Start Num: 50

Candidate Starts for Milly_77:

(Start: 50 @51107 has 11 MA's), (60, 51149), (73, 51284), (77, 51317), (107, 51419), (108, 51422), (110, 51434), (113, 51446), (136, 51560), (153, 51599), (159, 51632), (173, 51728), (180, 51761), (181, 51782), (182, 51785), (183, 51788), (187, 51809), (193, 51839), (194, 51842), (203, 51887), (224, 51977), (227, 51992),

Gene: Miryou_70 Start: 50627, Stop: 51463, Start Num: 45

Candidate Starts for Miryou_70:

(20, 50435), (22, 50468), (33, 50564), (Start: 45 @50627 has 25 MA's), (59, 50669), (62, 50693), (66, 50717), (72, 50783), (73, 50789), (80, 50846), (89, 50876), (106, 50927), (112, 50954), (113, 50957), (118, 50996), (122, 51032), (123, 51044), (130, 51071), (131, 51074), (133, 51080), (141, 51104), (160, 51161), (166, 51197), (173, 51254), (176, 51266), (177, 51272), (183, 51314), (188, 51338), (192, 51356), (195, 51374), (196, 51377), (198, 51386),

Gene: MissDaisy_75 Start: 48011, Stop: 48889, Start Num: 47

Candidate Starts for MissDaisy_75:

(Start: 47 @48011 has 23 MA's), (60, 48056), (63, 48080), (64, 48089), (67, 48119), (71, 48170), (76, 48212), (77, 48218), (82, 48251), (92, 48284), (98, 48293), (110, 48350), (112, 48359), (113, 48362), (115, 48386), (121, 48428), (123, 48449), (153, 48500), (154, 48506), (158, 48530), (159, 48533),

(163, 48557), (165, 48566), (174, 48632), (178, 48650), (179, 48656), (180, 48662), (183, 48689), (187, 48710), (193, 48740), (202, 48785),

Gene: Mitti_78 Start: 49771, Stop: 50649, Start Num: 47

Candidate Starts for Mitti_78:

(Start: 47 @49771 has 23 MA's), (60, 49816), (64, 49849), (67, 49879), (71, 49930), (76, 49972), (77, 49978), (82, 50011), (92, 50044), (98, 50053), (110, 50110), (112, 50119), (113, 50122), (115, 50146), (121, 50188), (123, 50209), (153, 50260), (154, 50266), (158, 50290), (159, 50293), (163, 50317), (165, 50326), (169, 50350), (174, 50392), (175, 50398), (179, 50416), (180, 50422), (183, 50449), (184, 50458), (187, 50470), (202, 50545),

Gene: Mufasa_76 Start: 50574, Stop: 51476, Start Num: 50

Candidate Starts for Mufasa_76:

(Start: 50 @50574 has 11 MA's), (60, 50616), (73, 50751), (77, 50784), (107, 50886), (108, 50889), (110, 50901), (113, 50913), (136, 51027), (153, 51066), (159, 51099), (173, 51195), (176, 51207), (180, 51228), (181, 51249), (183, 51255), (187, 51276), (193, 51306), (194, 51309), (203, 51354), (227, 51459),

Gene: Murucutumbu_74 Start: 49919, Stop: 51109, Start Num: 24

Candidate Starts for Murucutumbu_74:

(Start: 24 @49919 has 120 MA's), (25, 49925), (Start: 35 @50045 has 1 MA's), (42, 50072), (60, 50129), (62, 50150), (63, 50153), (66, 50174), (73, 50249), (76, 50276), (79, 50303), (84, 50324), (85, 50327), (90, 50345), (112, 50429), (113, 50432), (117, 50468), (121, 50498), (122, 50507), (129, 50549), (136, 50564), (173, 50738), (183, 50798), (190, 50834), (192, 50840), (196, 50861), (212, 50933), (217, 50957), (219, 50984), (223, 51017),

Gene: Mynx_75 Start: 49498, Stop: 50604, Start Num: 24

Candidate Starts for Mynx_75:

(Start: 24 @49498 has 120 MA's), (25, 49504), (Start: 30 @49555 has 7 MA's), (Start: 35 @49624 has 1 MA's), (36, 49630), (42, 49648), (53, 49672), (61, 49717), (62, 49723), (63, 49726), (66, 49747), (69, 49759), (73, 49822), (75, 49840), (76, 49849), (77, 49855), (79, 49876), (85, 49900), (90, 49918), (112, 50002), (113, 50005), (117, 50041), (118, 50044), (121, 50071), (122, 50080), (129, 50122), (136, 50137), (142, 50155), (173, 50311), (180, 50344), (183, 50371), (192, 50416), (195, 50434), (230, 50554),

Gene: Neighly_68 Start: 47422, Stop: 48276, Start Num: 45

Candidate Starts for Neighly_68:

(20, 47230), (22, 47263), (33, 47359), (Start: 45 @47422 has 25 MA's), (46, 47425), (58, 47464), (59, 47467), (62, 47491), (66, 47515), (73, 47587), (79, 47641), (89, 47674), (106, 47725), (108, 47731), (112, 47752), (113, 47755), (118, 47794), (130, 47869), (131, 47872), (141, 47902), (163, 47980), (166, 47995), (173, 48052), (176, 48064), (182, 48109), (189, 48139), (192, 48154), (195, 48172), (198, 48184), (204, 48208),

Gene: Nergal_65 Start: 45413, Stop: 46264, Start Num: 48

Candidate Starts for Nergal_65:

(Start: 48 @45413 has 1 MA's), (59, 45452), (63, 45479), (70, 45521), (77, 45605), (81, 45635), (88, 45656), (95, 45671), (102, 45695), (108, 45725), (113, 45749), (115, 45773), (119, 45794), (122, 45824), (124, 45839), (126, 45851), (135, 45863), (153, 45902), (154, 45908), (159, 45935), (160, 45938), (164, 45962), (167, 45977), (173, 46031), (178, 46052), (180, 46064), (183, 46091), (192, 46136), (197, 46163), (216, 46238),

Gene: Nibb_75 Start: 48740, Stop: 49771, Start Num: 30

Candidate Starts for Nibb_75:

(Start: 30 @48740 has 7 MA's), (Start: 31 @48746 has 1 MA's), (42, 48824), (62, 48905), (73, 49004), (75, 49022), (77, 49037), (87, 49088), (109, 49172), (112, 49184), (113, 49187), (117, 49223), (122, 49262), (137, 49334), (173, 49496), (180, 49529), (194, 49607), (195, 49619), (233, 49742), (235, 49760),

Gene: Nikao_63 Start: 48348, Stop: 49529, Start Num: 24

Candidate Starts for Nikao_63:

(Start: 24 @48348 has 120 MA's), (25, 48354), (26, 48366), (Start: 35 @48462 has 1 MA's), (41, 48486), (Start: 48 @48498 has 1 MA's), (54, 48522), (55, 48528), (60, 48540), (61, 48555), (62, 48561), (63, 48564), (66, 48585), (68, 48594), (69, 48597), (72, 48651), (73, 48657), (75, 48675), (77, 48690), (79, 48711), (80, 48714), (85, 48735), (94, 48762), (96, 48768), (101, 48786), (108, 48816), (112, 48837), (113, 48840), (116, 48867), (117, 48876), (121, 48906), (122, 48915), (123, 48927), (134, 48972), (145, 48999), (147, 49002), (155, 49035), (157, 49050), (159, 49056), (163, 49080), (165, 49089), (167, 49098), (171, 49131), (173, 49152), (175, 49161), (176, 49164), (180, 49185), (183, 49212), (190, 49251), (192, 49257), (195, 49275), (196, 49278), (198, 49287), (207, 49323), (212, 49350), (213, 49353), (214, 49359), (217, 49374), (219, 49401), (221, 49422), (222, 49425), (223, 49434), (235, 49518), (236, 49521),

Gene: Niklas_75 Start: 49005, Stop: 50108, Start Num: 24

Candidate Starts for Niklas_75:

(Start: 24 @49005 has 120 MA's), (25, 49011), (29, 49056), (Start: 35 @49119 has 1 MA's), (41, 49143), (55, 49185), (61, 49212), (62, 49218), (63, 49221), (66, 49242), (73, 49314), (76, 49341), (77, 49347), (85, 49392), (108, 49473), (109, 49482), (112, 49494), (113, 49497), (114, 49500), (117, 49533), (121, 49563), (122, 49572), (138, 49650), (139, 49653), (154, 49689), (159, 49716), (163, 49740), (166, 49755), (173, 49815), (178, 49836), (180, 49848), (183, 49875), (190, 49911), (192, 49917),

Gene: November_70 Start: 48781, Stop: 49884, Start Num: 23

Candidate Starts for November_70:

(15, 48706), (Start: 23 @48781 has 6 MA's), (25, 48790), (27, 48808), (29, 48835), (Start: 35 @48898 has 1 MA's), (41, 48922), (53, 48946), (55, 48964), (62, 48997), (64, 49009), (66, 49021), (73, 49096), (75, 49114), (112, 49276), (113, 49279), (122, 49354), (133, 49408), (138, 49426), (165, 49528), (173, 49591), (180, 49624), (183, 49651), (188, 49675), (195, 49711), (232, 49846), (234, 49861),

Gene: Nutello_60 Start: 45735, Stop: 46916, Start Num: 24

Candidate Starts for Nutello_60:

(Start: 24 @45735 has 120 MA's), (25, 45741), (26, 45753), (Start: 35 @45849 has 1 MA's), (41, 45873), (Start: 48 @45885 has 1 MA's), (54, 45909), (55, 45915), (60, 45927), (61, 45942), (62, 45948), (63, 45951), (66, 45972), (68, 45981), (69, 45984), (72, 46038), (73, 46044), (75, 46062), (77, 46077), (79, 46098), (80, 46101), (85, 46122), (94, 46149), (96, 46155), (101, 46173), (108, 46203), (112, 46224), (113, 46227), (116, 46254), (117, 46263), (121, 46293), (122, 46302), (123, 46314), (134, 46359), (145, 46386), (147, 46389), (155, 46422), (157, 46437), (159, 46443), (163, 46467), (165, 46476), (167, 46485), (171, 46518), (173, 46539), (175, 46548), (176, 46551), (180, 46572), (183, 46599), (190, 46638), (192, 46644), (195, 46662), (196, 46665), (198, 46674), (207, 46710), (212, 46737), (213, 46740), (214, 46746), (217, 46761), (219, 46788), (221, 46809), (222, 46812), (223, 46821), (235, 46905), (236, 46908),

Gene: OkiRoe_67 Start: 48299, Stop: 49147, Start Num: 45

Candidate Starts for OkiRoe_67:

(Start: 45 @48299 has 25 MA's), (59, 48341), (62, 48365), (66, 48389), (73, 48461), (80, 48518), (89, 48548), (106, 48599), (112, 48626), (113, 48629), (118, 48668), (122, 48704), (123, 48716), (131, 48743), (143, 48776), (146, 48779), (150, 48788), (160, 48845), (163, 48866), (166, 48881), (173, 48938), (176, 48950), (177, 48956), (183, 48998), (188, 49022), (192, 49040), (195, 49058), (196,

49061), (198, 49070), (215, 49139),

Gene: OmniCritical_78 Start: 49773, Stop: 50651, Start Num: 47

Candidate Starts for OmniCritical_78:

(Start: 47 @49773 has 23 MA's), (60, 49818), (64, 49851), (67, 49881), (71, 49932), (76, 49974), (77, 49980), (79, 50001), (82, 50013), (92, 50046), (98, 50055), (110, 50112), (112, 50121), (113, 50124), (115, 50148), (121, 50190), (123, 50211), (153, 50262), (154, 50268), (158, 50292), (159, 50295), (163, 50319), (165, 50328), (169, 50352), (174, 50394), (175, 50400), (179, 50418), (180, 50424), (183, 50451), (184, 50460), (187, 50472), (202, 50547),

Gene: Omnicron_70 Start: 48420, Stop: 49313, Start Num: 45

Candidate Starts for Omnicron_70:

(20, 48228), (22, 48261), (33, 48357), (43, 48417), (Start: 45 @48420 has 25 MA's), (56, 48459), (62, 48498), (66, 48522), (69, 48534), (72, 48588), (73, 48594), (79, 48648), (89, 48681), (97, 48693), (113, 48762), (114, 48765), (121, 48828), (122, 48837), (127, 48876), (166, 49017), (173, 49074), (183, 49134), (189, 49161), (192, 49176), (195, 49194), (204, 49230),

Gene: Oscar_75 Start: 48959, Stop: 49990, Start Num: 30

Candidate Starts for Oscar_75:

(21, 48884), (Start: 23 @48899 has 6 MA's), (Start: 30 @48959 has 7 MA's), (Start: 31 @48965 has 1 MA's), (42, 49043), (60, 49103), (62, 49124), (66, 49148), (73, 49223), (75, 49241), (87, 49307), (109, 49391), (112, 49403), (113, 49406), (122, 49481), (130, 49526), (139, 49559), (155, 49598), (163, 49643), (166, 49658), (173, 49715), (180, 49748), (194, 49826), (195, 49838), (233, 49961),

Gene: Padfoot_73 Start: 48883, Stop: 50070, Start Num: 24

Candidate Starts for Padfoot_73:

(Start: 24 @48883 has 120 MA's), (25, 48889), (Start: 35 @49009 has 1 MA's), (36, 49015), (42, 49033), (53, 49057), (61, 49102), (62, 49108), (63, 49111), (66, 49132), (69, 49144), (73, 49207), (76, 49234), (77, 49240), (79, 49261), (85, 49285), (90, 49303), (112, 49387), (113, 49390), (117, 49426), (118, 49429), (121, 49456), (122, 49465), (129, 49507), (167, 49639), (173, 49696), (183, 49756), (192, 49801), (194, 49807), (195, 49819), (212, 49894), (217, 49918), (219, 49945), (220, 49951), (221, 49966), (223, 49978), (230, 50020),

Gene: Padpat_77 Start: 49203, Stop: 50309, Start Num: 24

Candidate Starts for Padpat_77:

(Start: 24 @49203 has 120 MA's), (25, 49209), (Start: 35 @49329 has 1 MA's), (36, 49335), (38, 49344), (42, 49353), (53, 49377), (61, 49422), (62, 49428), (63, 49431), (66, 49452), (69, 49464), (73, 49527), (75, 49545), (76, 49554), (77, 49560), (79, 49581), (85, 49605), (112, 49707), (113, 49710), (117, 49746), (118, 49749), (121, 49776), (122, 49785), (129, 49827), (167, 49959), (173, 50016), (180, 50049), (183, 50076), (192, 50121), (195, 50139), (230, 50259),

Gene: Paola_66 Start: 47872, Stop: 48717, Start Num: 45

Candidate Starts for Paola_66:

(Start: 45 @47872 has 25 MA's), (59, 47914), (62, 47938), (66, 47962), (73, 48034), (80, 48091), (89, 48121), (106, 48172), (112, 48199), (113, 48202), (118, 48241), (122, 48277), (123, 48289), (131, 48316), (143, 48349), (146, 48352), (150, 48361), (160, 48418), (163, 48439), (166, 48454), (173, 48511), (176, 48523), (188, 48595), (189, 48598), (192, 48613), (195, 48631), (198, 48643),

Gene: Patt_74 Start: 47732, Stop: 48610, Start Num: 47

Candidate Starts for Patt_74:

(Start: 47 @47732 has 23 MA's), (60, 47777), (63, 47801), (64, 47810), (67, 47840), (71, 47891), (76, 47933), (77, 47939), (82, 47972), (92, 48005), (98, 48014), (110, 48071), (112, 48080), (113, 48083), (115, 48107), (121, 48149), (123, 48170), (153, 48221), (154, 48227), (158, 48251), (159, 48254),

(163, 48278), (165, 48287), (174, 48353), (178, 48371), (179, 48377), (180, 48383), (183, 48410), (187, 48431), (193, 48461), (202, 48506),

Gene: Peanam_75 Start: 48963, Stop: 50066, Start Num: 24

Candidate Starts for Peanam_75:

(Start: 24 @48963 has 120 MA's), (25, 48969), (29, 49014), (Start: 35 @49077 has 1 MA's), (41, 49101), (55, 49143), (61, 49170), (62, 49176), (63, 49179), (66, 49200), (73, 49272), (76, 49299), (77, 49305), (85, 49350), (108, 49431), (109, 49440), (112, 49452), (113, 49455), (114, 49458), (117, 49491), (121, 49521), (138, 49608), (139, 49611), (159, 49674), (163, 49698), (166, 49713), (173, 49773), (178, 49794), (180, 49806), (183, 49833), (192, 49875),

Gene: Peel_73 Start: 48688, Stop: 49875, Start Num: 24

Candidate Starts for Peel_73:

(Start: 24 @48688 has 120 MA's), (25, 48694), (Start: 35 @48814 has 1 MA's), (36, 48820), (42, 48838), (53, 48862), (61, 48907), (62, 48913), (63, 48916), (66, 48937), (69, 48949), (73, 49012), (76, 49039), (77, 49045), (79, 49066), (85, 49090), (90, 49108), (112, 49192), (113, 49195), (117, 49231), (118, 49234), (121, 49261), (122, 49270), (129, 49312), (167, 49444), (173, 49501), (183, 49561), (192, 49606), (194, 49612), (195, 49624), (212, 49699), (217, 49723), (219, 49750), (220, 49756), (221, 49771), (223, 49783), (230, 49825),

Gene: Pharb_72 Start: 48273, Stop: 49181, Start Num: 49

Candidate Starts for Pharb_72:

(34, 48225), (Start: 44 @48264 has 1 MA's), (Start: 49 @48273 has 9 MA's), (58, 48309), (66, 48360), (70, 48381), (73, 48432), (86, 48510), (95, 48531), (102, 48555), (113, 48609), (115, 48633), (117, 48645), (120, 48672), (122, 48684), (126, 48711), (154, 48774), (167, 48843), (168, 48855), (173, 48897), (180, 48930), (183, 48957), (184, 48969), (199, 49044),

Gene: PhelpsODU_76 Start: 48713, Stop: 49819, Start Num: 24

Candidate Starts for PhelpsODU_76:

(Start: 24 @48713 has 120 MA's), (25, 48719), (29, 48764), (Start: 35 @48827 has 1 MA's), (41, 48851), (53, 48875), (61, 48920), (63, 48929), (65, 48941), (66, 48950), (69, 48962), (73, 49022), (79, 49076), (80, 49079), (85, 49100), (112, 49202), (117, 49241), (122, 49280), (139, 49361), (141, 49367), (144, 49370), (153, 49391), (154, 49397), (159, 49424), (165, 49457), (167, 49466), (173, 49523), (175, 49532), (177, 49541), (178, 49544), (180, 49556), (183, 49583), (192, 49625),

Gene: Phrank_77 Start: 48576, Stop: 49679, Start Num: 24

Candidate Starts for Phrank_77:

(15, 48498), (Start: 24 @48576 has 120 MA's), (25, 48582), (Start: 30 @48633 has 7 MA's), (Start: 35 @48690 has 1 MA's), (41, 48714), (54, 48750), (63, 48792), (66, 48813), (69, 48825), (70, 48834), (73, 48885), (79, 48939), (80, 48942), (108, 49044), (112, 49065), (122, 49143), (139, 49221), (154, 49260), (167, 49329), (170, 49353), (173, 49383), (175, 49392), (177, 49401), (178, 49404), (180, 49416), (183, 49443), (192, 49485), (224, 49590), (234, 49653),

Gene: Piatt_72 Start: 48883, Stop: 50070, Start Num: 24

Candidate Starts for Piatt_72:

(Start: 24 @48883 has 120 MA's), (25, 48889), (Start: 35 @49009 has 1 MA's), (36, 49015), (42, 49033), (53, 49057), (61, 49102), (62, 49108), (63, 49111), (66, 49132), (69, 49144), (73, 49207), (76, 49234), (77, 49240), (79, 49261), (85, 49285), (90, 49303), (112, 49387), (113, 49390), (117, 49426), (118, 49429), (121, 49456), (122, 49465), (129, 49507), (167, 49639), (173, 49696), (183, 49756), (192, 49801), (194, 49807), (195, 49819), (212, 49894), (217, 49918), (219, 49945), (220, 49951), (221, 49966), (223, 49978), (230, 50020),

Gene: Pisa1_71 Start: 49259, Stop: 50368, Start Num: 24

Candidate Starts for Pisa1_71:

(2, 49091), (5, 49115), (7, 49121), (8, 49124), (12, 49142), (15, 49181), (Start: 24 @49259 has 120 MA's), (25, 49265), (Start: 35 @49385 has 1 MA's), (57, 49460), (60, 49469), (62, 49490), (63, 49493), (66, 49514), (73, 49589), (76, 49616), (77, 49622), (79, 49643), (84, 49664), (85, 49667), (112, 49769), (113, 49772), (121, 49838), (122, 49847), (129, 49889), (136, 49904), (145, 49925), (154, 49952), (173, 50078), (177, 50096), (180, 50111), (183, 50138), (195, 50198), (196, 50201), (230, 50318),

Gene: Pisa4_65 Start: 44628, Stop: 45737, Start Num: 24

Candidate Starts for Pisa4_65:

(2, 44460), (5, 44484), (7, 44490), (8, 44493), (12, 44511), (15, 44550), (Start: 24 @44628 has 120 MA's), (25, 44634), (Start: 35 @44754 has 1 MA's), (57, 44829), (60, 44838), (62, 44859), (63, 44862), (66, 44883), (73, 44958), (76, 44985), (77, 44991), (79, 45012), (84, 45033), (85, 45036), (112, 45138), (113, 45141), (121, 45207), (122, 45216), (129, 45258), (136, 45273), (145, 45294), (154, 45321), (173, 45447), (177, 45465), (180, 45480), (183, 45507), (195, 45567), (196, 45570), (230, 45687),

Gene: Pixie_73 Start: 48565, Stop: 49482, Start Num: 49

Candidate Starts for Pixie_73:

(Start: 31 @48472 has 1 MA's), (Start: 45 @48559 has 25 MA's), (Start: 49 @48565 has 9 MA's), (58, 48601), (66, 48652), (73, 48724), (95, 48823), (102, 48847), (113, 48901), (115, 48925), (117, 48937), (122, 48976), (126, 49003), (154, 49066), (159, 49093), (160, 49096), (167, 49135), (168, 49147), (173, 49189), (180, 49222), (184, 49261), (199, 49336),

Gene: Pokerus_74 Start: 49212, Stop: 50318, Start Num: 24

Candidate Starts for Pokerus_74:

(Start: 24 @49212 has 120 MA's), (25, 49218), (Start: 30 @49269 has 7 MA's), (Start: 35 @49338 has 1 MA's), (36, 49344), (42, 49362), (53, 49386), (61, 49431), (62, 49437), (63, 49440), (66, 49461), (69, 49473), (73, 49536), (75, 49554), (76, 49563), (77, 49569), (79, 49590), (85, 49614), (90, 49632), (112, 49716), (113, 49719), (117, 49755), (118, 49758), (121, 49785), (122, 49794), (129, 49836), (136, 49851), (142, 49869), (173, 50025), (180, 50058), (183, 50085), (192, 50130), (195, 50148), (230, 50268),

Gene: Prithvi_76 Start: 49236, Stop: 50336, Start Num: 24

Candidate Starts for Prithvi_76:

(15, 49158), (16, 49167), (Start: 24 @49236 has 120 MA's), (25, 49242), (Start: 35 @49350 has 1 MA's), (42, 49377), (60, 49434), (62, 49455), (63, 49458), (66, 49479), (69, 49491), (73, 49554), (76, 49581), (77, 49587), (79, 49608), (84, 49629), (85, 49632), (90, 49650), (112, 49734), (113, 49737), (117, 49773), (118, 49776), (121, 49803), (122, 49812), (129, 49854), (145, 49890), (158, 49941), (167, 49986), (173, 50043), (180, 50076), (183, 50103), (190, 50142), (195, 50166), (230, 50286),

Gene: Psycho_66 Start: 46548, Stop: 47402, Start Num: 45

Candidate Starts for Psycho_66:

(20, 46356), (22, 46389), (33, 46485), (Start: 45 @46548 has 25 MA's), (46, 46551), (58, 46590), (59, 46593), (62, 46617), (66, 46641), (73, 46713), (79, 46767), (89, 46800), (106, 46851), (108, 46857), (112, 46878), (113, 46881), (118, 46920), (130, 46995), (131, 46998), (141, 47028), (163, 47106), (166, 47121), (173, 47178), (176, 47190), (182, 47235), (189, 47265), (192, 47280), (195, 47298), (198, 47310), (204, 47334),

Gene: Qhanda_80 Start: 49632, Stop: 50510, Start Num: 47

Candidate Starts for Qhanda_80:

(Start: 47 @49632 has 23 MA's), (60, 49677), (64, 49710), (67, 49740), (71, 49791), (76, 49833), (77, 49839), (79, 49860), (82, 49872), (92, 49905), (98, 49914), (110, 49971), (112, 49980), (113, 49983), (115, 50007), (121, 50049), (123, 50070), (153, 50121), (154, 50127), (158, 50151), (159, 50154), (163, 50178), (165, 50187), (169, 50211), (174, 50253), (175, 50259), (179, 50277), (180, 50283),

(183, 50310), (184, 50319), (187, 50331), (202, 50406),

Gene: QuincyRose_71 Start: 49093, Stop: 50280, Start Num: 24

Candidate Starts for QuincyRose_71:

(Start: 24 @49093 has 120 MA's), (25, 49099), (Start: 35 @49219 has 1 MA's), (36, 49225), (53, 49267), (61, 49312), (62, 49318), (63, 49321), (66, 49342), (69, 49354), (73, 49417), (76, 49444), (77, 49450), (79, 49471), (85, 49495), (90, 49513), (112, 49597), (113, 49600), (117, 49636), (118, 49639), (121, 49666), (122, 49675), (129, 49717), (173, 49906), (183, 49966), (192, 50011), (194, 50017), (195, 50029), (212, 50104), (217, 50128), (219, 50155), (220, 50161), (221, 50176), (223, 50188), (230, 50230),

Gene: Ramen_74 Start: 48533, Stop: 49639, Start Num: 24

Candidate Starts for Ramen_74:

(2, 48365), (5, 48389), (8, 48398), (11, 48410), (12, 48416), (15, 48455), (Start: 24 @48533 has 120 MA's), (25, 48539), (Start: 35 @48659 has 1 MA's), (36, 48665), (38, 48674), (42, 48683), (53, 48707), (61, 48752), (62, 48758), (63, 48761), (66, 48782), (69, 48794), (73, 48857), (76, 48884), (77, 48890), (79, 48911), (85, 48935), (90, 48953), (103, 48989), (112, 49037), (113, 49040), (117, 49076), (118, 49079), (121, 49106), (122, 49115), (129, 49157), (136, 49172), (142, 49190), (167, 49289), (173, 49346), (180, 49379), (183, 49406), (192, 49451), (195, 49469), (230, 49589),

Gene: Rando14_69 Start: 47204, Stop: 48082, Start Num: 45

Candidate Starts for Rando14_69:

(33, 47141), (43, 47201), (Start: 45 @47204 has 25 MA's), (56, 47243), (62, 47282), (66, 47306), (69, 47318), (89, 47465), (97, 47477), (110, 47534), (113, 47546), (114, 47549), (121, 47612), (122, 47621), (130, 47660), (131, 47663), (141, 47693), (163, 47771), (166, 47786), (173, 47843), (176, 47855), (189, 47930), (192, 47945), (195, 47963), (196, 47966),

Gene: Rapunzel97_76 Start: 49184, Stop: 50290, Start Num: 24

Candidate Starts for Rapunzel97_76:

(Start: 24 @49184 has 120 MA's), (25, 49190), (Start: 30 @49241 has 7 MA's), (Start: 35 @49310 has 1 MA's), (36, 49316), (42, 49334), (53, 49358), (61, 49403), (62, 49409), (63, 49412), (66, 49433), (69, 49445), (73, 49508), (75, 49526), (76, 49535), (77, 49541), (79, 49562), (85, 49586), (90, 49604), (112, 49688), (113, 49691), (117, 49727), (118, 49730), (121, 49757), (122, 49766), (129, 49808), (136, 49823), (142, 49841), (167, 49940), (173, 49997), (180, 50030), (183, 50057), (192, 50102), (195, 50120), (230, 50240),

Gene: Reptar3000_75 Start: 47721, Stop: 48599, Start Num: 47

Candidate Starts for Reptar3000_75:

(Start: 47 @47721 has 23 MA's), (60, 47766), (63, 47790), (64, 47799), (71, 47880), (76, 47922), (77, 47928), (82, 47961), (92, 47994), (98, 48003), (110, 48060), (112, 48069), (113, 48072), (115, 48096), (121, 48138), (123, 48159), (153, 48210), (154, 48216), (158, 48240), (159, 48243), (163, 48267), (165, 48276), (174, 48342), (178, 48360), (179, 48366), (180, 48372), (183, 48399), (187, 48420), (193, 48450), (202, 48495),

Gene: Richo_74 Start: 49082, Stop: 50047, Start Num: 41

Candidate Starts for Richo_74:

(Start: 24 @48944 has 120 MA's), (25, 48950), (29, 48995), (Start: 35 @49058 has 1 MA's), (41, 49082), (55, 49124), (61, 49151), (62, 49157), (63, 49160), (66, 49181), (73, 49253), (76, 49280), (77, 49286), (85, 49331), (108, 49412), (109, 49421), (112, 49433), (113, 49436), (114, 49439), (117, 49472), (121, 49502), (122, 49511), (138, 49589), (139, 49592), (154, 49628), (159, 49655), (163, 49679), (166, 49694), (173, 49754), (178, 49775), (180, 49787), (183, 49814), (190, 49850), (192, 49856), (224, 49961),

Gene: Rosmarinus_73 Start: 48674, Stop: 49861, Start Num: 24

Candidate Starts for Rosmarinus_73:

(Start: 24 @48674 has 120 MA's), (25, 48680), (Start: 35 @48800 has 1 MA's), (36, 48806), (42, 48824), (53, 48848), (61, 48893), (62, 48899), (63, 48902), (66, 48923), (69, 48935), (73, 48998), (76, 49025), (77, 49031), (79, 49052), (85, 49076), (90, 49094), (112, 49178), (113, 49181), (117, 49217), (118, 49220), (121, 49247), (122, 49256), (129, 49298), (167, 49430), (173, 49487), (183, 49547), (192, 49592), (194, 49598), (195, 49610), (212, 49685), (217, 49709), (219, 49736), (220, 49742), (221, 49757), (223, 49769), (230, 49811),

Gene: Ruthiejr_79 Start: 49661, Stop: 50539, Start Num: 47

Candidate Starts for Ruthiejr_79:

(Start: 47 @49661 has 23 MA's), (60, 49706), (63, 49730), (64, 49739), (67, 49769), (71, 49820), (76, 49862), (77, 49868), (80, 49892), (82, 49901), (92, 49934), (98, 49943), (110, 50000), (112, 50009), (113, 50012), (115, 50036), (121, 50078), (123, 50099), (153, 50153), (154, 50159), (158, 50183), (159, 50186), (163, 50210), (165, 50219), (169, 50243), (174, 50285), (175, 50291), (179, 50309), (180, 50315), (183, 50342), (184, 50351), (187, 50363), (193, 50393), (202, 50438),

Gene: SamScheppers_77 Start: 49936, Stop: 50814, Start Num: 47

Candidate Starts for SamScheppers_77:

(Start: 47 @49936 has 23 MA's), (60, 49981), (64, 50014), (67, 50044), (71, 50095), (76, 50137), (77, 50143), (79, 50164), (82, 50176), (92, 50209), (98, 50218), (110, 50275), (112, 50284), (113, 50287), (115, 50311), (121, 50353), (123, 50374), (153, 50425), (154, 50431), (158, 50455), (159, 50458), (163, 50482), (165, 50491), (169, 50515), (174, 50557), (175, 50563), (179, 50581), (180, 50587), (183, 50614), (184, 50623), (187, 50635), (202, 50710), (225, 50803),

Gene: SamuelLPlaqson_73 Start: 49181, Stop: 50269, Start Num: 24

Candidate Starts for SamuelLPlaqson_73:

(Start: 24 @49181 has 120 MA's), (25, 49187), (Start: 35 @49307 has 1 MA's), (42, 49334), (60, 49391), (62, 49412), (63, 49415), (66, 49436), (73, 49511), (76, 49538), (77, 49544), (79, 49565), (84, 49586), (85, 49589), (90, 49607), (112, 49691), (113, 49694), (117, 49730), (118, 49733), (121, 49760), (122, 49769), (149, 49835), (162, 49901), (167, 49922), (173, 49979), (180, 50012), (183, 50039), (195, 50099), (196, 50102), (230, 50219),

Gene: Scarlett_76 Start: 49295, Stop: 50326, Start Num: 30

Candidate Starts for Scarlett_76:

(21, 49220), (Start: 23 @49235 has 6 MA's), (Start: 30 @49295 has 7 MA's), (Start: 31 @49301 has 1 MA's), (42, 49379), (60, 49439), (62, 49460), (66, 49484), (73, 49559), (75, 49577), (87, 49643), (109, 49727), (112, 49739), (113, 49742), (122, 49817), (130, 49862), (139, 49895), (155, 49934), (163, 49979), (166, 49994), (173, 50051), (194, 50162), (195, 50174), (233, 50297),

Gene: SgtBeansprout_61 Start: 45735, Stop: 46916, Start Num: 24

Candidate Starts for SgtBeansprout_61:

(Start: 24 @45735 has 120 MA's), (25, 45741), (26, 45753), (Start: 35 @45849 has 1 MA's), (41, 45873), (Start: 48 @45885 has 1 MA's), (54, 45909), (55, 45915), (60, 45927), (61, 45942), (62, 45948), (63, 45951), (66, 45972), (68, 45981), (69, 45984), (72, 46038), (73, 46044), (75, 46062), (77, 46077), (79, 46098), (80, 46101), (85, 46122), (94, 46149), (96, 46155), (101, 46173), (108, 46203), (112, 46224), (113, 46227), (116, 46254), (117, 46263), (121, 46293), (122, 46302), (123, 46314), (134, 46359), (145, 46386), (147, 46389), (155, 46422), (157, 46437), (159, 46443), (163, 46467), (165, 46476), (167, 46485), (171, 46518), (173, 46539), (175, 46548), (176, 46551), (180, 46572), (183, 46599), (190, 46638), (192, 46644), (195, 46662), (196, 46665), (198, 46674), (207, 46710), (212, 46737), (213, 46740), (214, 46746), (217, 46761), (219, 46788), (221, 46809), (222, 46812), (223, 46821), (235, 46905), (236, 46908),

Gene: Shadow1_77 Start: 48873, Stop: 49973, Start Num: 24

Candidate Starts for Shadow1_77:

(Start: 24 @48873 has 120 MA's), (25, 48879), (29, 48924), (Start: 35 @48987 has 1 MA's), (41, 49011), (64, 49098), (66, 49110), (73, 49182), (77, 49215), (79, 49236), (80, 49239), (90, 49278), (112, 49362), (117, 49401), (139, 49518), (144, 49527), (156, 49572), (159, 49584), (173, 49680), (175, 49689), (177, 49698), (178, 49701), (180, 49713), (183, 49740), (186, 49758), (192, 49782), (224, 49887), (228, 49908), (232, 49935),

Gene: Shaobing_74 Start: 48980, Stop: 50083, Start Num: 24

Candidate Starts for Shaobing_74:

(Start: 24 @48980 has 120 MA's), (25, 48986), (29, 49031), (Start: 35 @49094 has 1 MA's), (41, 49118), (55, 49160), (61, 49187), (62, 49193), (63, 49196), (66, 49217), (73, 49289), (76, 49316), (77, 49322), (85, 49367), (108, 49448), (109, 49457), (112, 49469), (113, 49472), (114, 49475), (117, 49508), (121, 49538), (122, 49547), (138, 49625), (139, 49628), (154, 49664), (159, 49691), (163, 49715), (166, 49730), (173, 49790), (178, 49811), (180, 49823), (183, 49850), (190, 49886), (192, 49892),

Gene: ShedlockHolmes_76 Start: 49078, Stop: 49995, Start Num: 49

Candidate Starts for ShedlockHolmes_76:

(Start: 31 @48985 has 1 MA's), (Start: 49 @49078 has 9 MA's), (58, 49114), (66, 49165), (70, 49186), (73, 49237), (95, 49336), (102, 49360), (113, 49414), (115, 49438), (117, 49450), (122, 49489), (125, 49510), (154, 49579), (159, 49606), (160, 49609), (167, 49648), (168, 49660), (173, 49702), (180, 49735), (184, 49774), (199, 49849),

Gene: ShiaSurprise_74 Start: 48883, Stop: 50070, Start Num: 24

Candidate Starts for ShiaSurprise_74:

(Start: 24 @48883 has 120 MA's), (25, 48889), (Start: 35 @49009 has 1 MA's), (36, 49015), (42, 49033), (53, 49057), (61, 49102), (62, 49108), (63, 49111), (66, 49132), (69, 49144), (73, 49207), (76, 49234), (77, 49240), (79, 49261), (85, 49285), (90, 49303), (112, 49387), (113, 49390), (117, 49426), (118, 49429), (121, 49456), (122, 49465), (129, 49507), (167, 49639), (173, 49696), (183, 49756), (192, 49801), (194, 49807), (195, 49819), (212, 49894), (217, 49918), (219, 49945), (220, 49951), (221, 49966), (223, 49978), (230, 50020),

Gene: SirPhilip_72 Start: 49101, Stop: 50201, Start Num: 24

Candidate Starts for SirPhilip_72:

(15, 49023), (Start: 24 @49101 has 120 MA's), (25, 49107), (29, 49152), (41, 49239), (Start: 45 @49245 has 25 MA's), (53, 49263), (55, 49281), (62, 49314), (64, 49326), (66, 49338), (69, 49350), (70, 49359), (73, 49413), (79, 49467), (84, 49488), (85, 49491), (112, 49593), (116, 49623), (122, 49671), (133, 49725), (138, 49743), (144, 49755), (173, 49905), (177, 49923), (180, 49938), (182, 49962), (183, 49965), (192, 50010), (232, 50163),

Gene: Slarp_78 Start: 49635, Stop: 50513, Start Num: 47

Candidate Starts for Slarp_78:

(Start: 47 @49635 has 23 MA's), (60, 49680), (64, 49713), (67, 49743), (71, 49794), (76, 49836), (77, 49842), (79, 49863), (82, 49875), (92, 49908), (98, 49917), (110, 49974), (112, 49983), (113, 49986), (115, 50010), (121, 50052), (123, 50073), (153, 50124), (154, 50130), (158, 50154), (159, 50157), (163, 50181), (165, 50190), (169, 50214), (174, 50256), (175, 50262), (179, 50280), (180, 50286), (183, 50313), (184, 50322), (187, 50334), (202, 50409),

Gene: Slimphazie_75 Start: 49184, Stop: 50290, Start Num: 24

Candidate Starts for Slimphazie_75:

(Start: 24 @49184 has 120 MA's), (25, 49190), (Start: 30 @49241 has 7 MA's), (Start: 35 @49310 has 1 MA's), (36, 49316), (42, 49334), (53, 49358), (61, 49403), (62, 49409), (63, 49412), (66, 49433), (69,

49445), (73, 49508), (75, 49526), (76, 49535), (77, 49541), (79, 49562), (85, 49586), (90, 49604), (112, 49688), (113, 49691), (117, 49727), (118, 49730), (121, 49757), (122, 49766), (129, 49808), (136, 49823), (142, 49841), (167, 49940), (173, 49997), (180, 50030), (183, 50057), (192, 50102), (195, 50120), (230, 50240),

Gene: SoSeph_67 Start: 48251, Stop: 49087, Start Num: 45

Candidate Starts for SoSeph_67:

(20, 48059), (22, 48092), (33, 48188), (Start: 45 @48251 has 25 MA's), (59, 48293), (62, 48317), (66, 48341), (72, 48407), (73, 48413), (80, 48470), (89, 48500), (106, 48551), (112, 48578), (113, 48581), (118, 48620), (122, 48656), (123, 48668), (130, 48695), (131, 48698), (133, 48704), (136, 48713), (141, 48728), (154, 48755), (163, 48806), (166, 48821), (173, 48878), (176, 48890), (177, 48896), (183, 48938), (188, 48962), (192, 48980), (195, 48998), (196, 49001), (198, 49010),

Gene: Spock_73 Start: 48687, Stop: 49874, Start Num: 24

Candidate Starts for Spock_73:

(Start: 24 @48687 has 120 MA's), (25, 48693), (Start: 35 @48813 has 1 MA's), (36, 48819), (42, 48837), (53, 48861), (61, 48906), (62, 48912), (63, 48915), (66, 48936), (69, 48948), (73, 49011), (76, 49038), (77, 49044), (79, 49065), (85, 49089), (90, 49107), (112, 49191), (113, 49194), (117, 49230), (118, 49233), (121, 49260), (122, 49269), (129, 49311), (167, 49443), (173, 49500), (183, 49560), (192, 49605), (194, 49611), (195, 49623), (212, 49698), (217, 49722), (219, 49749), (220, 49755), (221, 49770), (223, 49782), (230, 49824),

Gene: Stinson_74 Start: 49279, Stop: 50469, Start Num: 24

Candidate Starts for Stinson_74:

(Start: 24 @49279 has 120 MA's), (25, 49285), (Start: 35 @49405 has 1 MA's), (42, 49432), (60, 49489), (62, 49510), (63, 49513), (66, 49534), (69, 49546), (73, 49609), (75, 49627), (76, 49636), (77, 49642), (78, 49648), (79, 49663), (84, 49684), (85, 49687), (90, 49705), (112, 49789), (113, 49792), (117, 49828), (121, 49858), (122, 49867), (129, 49909), (136, 49924), (173, 50098), (183, 50158), (190, 50194), (192, 50200), (196, 50221), (212, 50293), (217, 50317), (219, 50344), (223, 50377),

Gene: Strobilo_78 Start: 51113, Stop: 52015, Start Num: 50

Candidate Starts for Strobilo_78:

(Start: 50 @51113 has 11 MA's), (60, 51155), (73, 51290), (77, 51323), (107, 51425), (108, 51428), (110, 51440), (113, 51452), (136, 51566), (153, 51605), (159, 51638), (173, 51734), (180, 51767), (181, 51788), (183, 51794), (187, 51815), (193, 51845), (194, 51848), (203, 51893), (224, 51983), (227, 51998),

Gene: Sulley_72 Start: 48714, Stop: 49901, Start Num: 24

Candidate Starts for Sulley_72:

(Start: 24 @48714 has 120 MA's), (25, 48720), (Start: 30 @48771 has 7 MA's), (Start: 35 @48840 has 1 MA's), (36, 48846), (42, 48864), (53, 48888), (61, 48933), (62, 48939), (63, 48942), (66, 48963), (69, 48975), (73, 49038), (75, 49056), (76, 49065), (77, 49071), (79, 49092), (85, 49116), (90, 49134), (112, 49218), (113, 49221), (117, 49257), (118, 49260), (121, 49287), (122, 49296), (129, 49338), (173, 49527), (183, 49587), (192, 49632), (194, 49638), (195, 49650), (212, 49725), (217, 49749), (219, 49776), (220, 49782), (221, 49797), (223, 49809), (230, 49851),

Gene: Sunflower1121_78 Start: 49019, Stop: 50119, Start Num: 24

Candidate Starts for Sunflower1121_78:

(Start: 24 @49019 has 120 MA's), (25, 49025), (29, 49070), (Start: 35 @49133 has 1 MA's), (41, 49157), (64, 49244), (66, 49256), (73, 49328), (77, 49361), (79, 49382), (80, 49385), (90, 49424), (112, 49508), (117, 49547), (139, 49664), (144, 49673), (156, 49718), (159, 49730), (173, 49826), (175, 49835), (177, 49844), (178, 49847), (180, 49859), (183, 49886), (186, 49904), (192, 49928), (224, 50033), (228, 50054), (232, 50081),

Gene: Syra333_76 Start: 48747, Stop: 49847, Start Num: 24

Candidate Starts for Syra333_76:

(15, 48669), (Start: 24 @48747 has 120 MA's), (25, 48753), (29, 48798), (Start: 35 @48861 has 1 MA's), (41, 48885), (66, 48984), (73, 49056), (77, 49089), (79, 49110), (80, 49113), (112, 49236), (117, 49275), (139, 49392), (144, 49401), (156, 49446), (159, 49458), (173, 49554), (175, 49563), (177, 49572), (178, 49575), (180, 49587), (183, 49614), (192, 49656), (232, 49809),

Gene: TBond007_70 Start: 48564, Stop: 49481, Start Num: 49

Candidate Starts for TBond007_70:

(Start: 45 @48558 has 25 MA's), (Start: 49 @48564 has 9 MA's), (58, 48600), (66, 48651), (73, 48723), (95, 48822), (102, 48846), (113, 48900), (115, 48924), (117, 48936), (122, 48975), (126, 49002), (154, 49065), (159, 49092), (160, 49095), (167, 49134), (168, 49146), (173, 49188), (180, 49221), (184, 49260), (199, 49335),

Gene: TClif_74 Start: 48506, Stop: 49597, Start Num: 24

Candidate Starts for TClif_74:

(15, 48431), (18, 48446), (Start: 24 @48506 has 120 MA's), (25, 48512), (29, 48557), (64, 48731), (66, 48743), (73, 48815), (76, 48842), (77, 48848), (79, 48869), (85, 48893), (95, 48920), (108, 48974), (113, 48998), (114, 49001), (122, 49073), (123, 49085), (128, 49115), (144, 49148), (165, 49238), (173, 49301), (180, 49334), (183, 49361), (195, 49424), (232, 49559),

Gene: TM4_75 Start: 45538, Stop: 46449, Start Num: 50

Candidate Starts for TM4_75:

(Start: 50 @45538 has 11 MA's), (60, 45580), (73, 45715), (77, 45748), (107, 45850), (108, 45853), (113, 45877), (136, 45991), (153, 46030), (159, 46063), (173, 46159), (180, 46192), (181, 46213), (182, 46216), (183, 46219), (187, 46240), (193, 46270), (203, 46318), (227, 46432),

Gene: Tachez_73 Start: 48531, Stop: 49718, Start Num: 24

Candidate Starts for Tachez_73:

(Start: 24 @48531 has 120 MA's), (25, 48537), (Start: 35 @48657 has 1 MA's), (36, 48663), (42, 48681), (53, 48705), (61, 48750), (62, 48756), (63, 48759), (66, 48780), (69, 48792), (73, 48855), (76, 48882), (77, 48888), (79, 48909), (85, 48933), (90, 48951), (112, 49035), (113, 49038), (117, 49074), (118, 49077), (121, 49104), (122, 49113), (129, 49155), (167, 49287), (173, 49344), (183, 49404), (192, 49449), (194, 49455), (195, 49467), (212, 49542), (217, 49566), (219, 49593), (220, 49599), (221, 49614), (223, 49626), (230, 49668),

Gene: TaiwanKao_75 Start: 49281, Stop: 50393, Start Num: 24

Candidate Starts for TaiwanKao_75:

(Start: 24 @49281 has 120 MA's), (25, 49287), (Start: 35 @49407 has 1 MA's), (42, 49434), (60, 49491), (62, 49512), (63, 49515), (66, 49536), (73, 49611), (76, 49638), (79, 49665), (84, 49686), (85, 49689), (90, 49707), (112, 49791), (113, 49794), (117, 49830), (121, 49860), (122, 49869), (129, 49911), (136, 49926), (145, 49947), (158, 49998), (167, 50043), (173, 50100), (180, 50133), (183, 50160), (190, 50199), (195, 50223), (226, 50322), (230, 50343),

Gene: Taquito_77 Start: 49669, Stop: 50547, Start Num: 47

Candidate Starts for Taquito_77:

(Start: 47 @49669 has 23 MA's), (60, 49714), (64, 49747), (67, 49777), (71, 49828), (76, 49870), (77, 49876), (82, 49909), (92, 49942), (98, 49951), (110, 50008), (112, 50017), (113, 50020), (115, 50044), (121, 50086), (123, 50107), (153, 50158), (154, 50164), (158, 50188), (159, 50191), (163, 50215), (165, 50224), (169, 50248), (174, 50290), (175, 50296), (179, 50314), (180, 50320), (183, 50347), (184, 50356), (187, 50368), (202, 50443),

Gene: Teejan_62 Start: 48348, Stop: 49529, Start Num: 24

Candidate Starts for Teejan_62:

(Start: 24 @48348 has 120 MA's), (25, 48354), (26, 48366), (Start: 35 @48462 has 1 MA's), (41, 48486), (Start: 48 @48498 has 1 MA's), (54, 48522), (55, 48528), (60, 48540), (61, 48555), (62, 48561), (63, 48564), (66, 48585), (68, 48594), (69, 48597), (72, 48651), (73, 48657), (75, 48675), (77, 48690), (79, 48711), (80, 48714), (85, 48735), (94, 48762), (96, 48768), (101, 48786), (108, 48816), (112, 48837), (113, 48840), (116, 48867), (117, 48876), (121, 48906), (122, 48915), (123, 48927), (134, 48972), (145, 48999), (147, 49002), (155, 49035), (157, 49050), (159, 49056), (163, 49080), (165, 49089), (167, 49098), (171, 49131), (173, 49152), (175, 49161), (176, 49164), (180, 49185), (183, 49212), (190, 49251), (192, 49257), (195, 49275), (196, 49278), (198, 49287), (207, 49323), (212, 49350), (213, 49353), (214, 49359), (217, 49374), (219, 49401), (221, 49422), (222, 49425), (223, 49434), (235, 49518), (236, 49521),

Gene: Thyatira_69 Start: 50243, Stop: 51079, Start Num: 45

Candidate Starts for Thyatira_69:

(20, 50051), (22, 50084), (33, 50180), (Start: 45 @50243 has 25 MA's), (59, 50285), (62, 50309), (66, 50333), (72, 50399), (73, 50405), (80, 50462), (89, 50492), (106, 50543), (112, 50570), (113, 50573), (118, 50612), (122, 50648), (123, 50660), (130, 50687), (131, 50690), (133, 50696), (141, 50720), (160, 50777), (166, 50813), (173, 50870), (176, 50882), (177, 50888), (183, 50930), (188, 50954), (192, 50972), (195, 50990), (196, 50993), (198, 51002),

Gene: Tierra_77 Start: 49387, Stop: 50490, Start Num: 24

Candidate Starts for Tierra_77:

(Start: 24 @49387 has 120 MA's), (25, 49393), (Start: 30 @49444 has 7 MA's), (Start: 35 @49501 has 1 MA's), (41, 49525), (54, 49561), (63, 49603), (66, 49624), (69, 49636), (70, 49645), (73, 49696), (79, 49750), (80, 49753), (108, 49855), (112, 49876), (122, 49954), (139, 50032), (154, 50071), (167, 50140), (170, 50164), (173, 50194), (175, 50203), (177, 50212), (178, 50215), (180, 50227), (183, 50254), (192, 50296), (234, 50464),

Gene: Tigress9_77 Start: 49062, Stop: 50162, Start Num: 24

Candidate Starts for Tigress9_77:

(15, 48984), (Start: 24 @49062 has 120 MA's), (25, 49068), (29, 49113), (Start: 35 @49176 has 1 MA's), (41, 49200), (61, 49269), (65, 49290), (66, 49299), (69, 49311), (73, 49371), (77, 49404), (79, 49425), (85, 49449), (112, 49551), (117, 49590), (133, 49683), (139, 49707), (154, 49746), (156, 49761), (170, 49839), (173, 49869), (175, 49878), (177, 49887), (178, 49890), (180, 49902), (183, 49929), (192, 49971), (224, 50076), (232, 50124),

Gene: TingHuaYa_76 Start: 48446, Stop: 49630, Start Num: 24

Candidate Starts for TingHuaYa_76:

(Start: 24 @48446 has 120 MA's), (25, 48452), (27, 48470), (28, 48494), (29, 48497), (Start: 31 @48509 has 1 MA's), (Start: 35 @48560 has 1 MA's), (36, 48566), (42, 48587), (60, 48644), (62, 48665), (63, 48668), (66, 48689), (73, 48764), (75, 48782), (76, 48791), (77, 48797), (79, 48818), (84, 48839), (85, 48842), (90, 48860), (99, 48884), (112, 48944), (113, 48947), (117, 48983), (121, 49013), (122, 49022), (129, 49064), (136, 49079), (157, 49148), (163, 49178), (165, 49187), (167, 49196), (173, 49253), (183, 49313), (192, 49358), (194, 49364), (195, 49376), (212, 49451), (217, 49475), (219, 49502), (220, 49508), (221, 49523), (223, 49535), (233, 49601),

Gene: TiniBug_73 Start: 49181, Stop: 50269, Start Num: 24

Candidate Starts for TiniBug_73:

(Start: 24 @49181 has 120 MA's), (25, 49187), (Start: 30 @49238 has 7 MA's), (Start: 31 @49244 has 1 MA's), (Start: 35 @49307 has 1 MA's), (39, 49328), (42, 49334), (60, 49391), (62, 49412), (63, 49415), (66, 49436), (69, 49448), (71, 49487), (73, 49511), (75, 49529), (76, 49538), (77, 49544), (79, 49565), (84, 49586), (85, 49589), (90, 49607), (108, 49670), (112, 49691), (113, 49694), (117, 49730),

(118, 49733), (121, 49760), (122, 49769), (149, 49835), (158, 49877), (173, 49979), (180, 50012), (183, 50039), (195, 50099), (196, 50102), (230, 50219),

Gene: Tiri_73 Start: 48587, Stop: 49774, Start Num: 24

Candidate Starts for Tiri_73:

(Start: 24 @48587 has 120 MA's), (25, 48593), (Start: 35 @48713 has 1 MA's), (36, 48719), (53, 48761), (61, 48806), (62, 48812), (63, 48815), (66, 48836), (69, 48848), (73, 48911), (76, 48938), (77, 48944), (79, 48965), (85, 48989), (90, 49007), (112, 49091), (113, 49094), (117, 49130), (118, 49133), (121, 49160), (122, 49169), (129, 49211), (167, 49343), (173, 49400), (183, 49460), (192, 49505), (194, 49511), (195, 49523), (212, 49598), (217, 49622), (219, 49649), (220, 49655), (221, 49670), (223, 49682), (230, 49724),

Gene: Topper_73 Start: 48686, Stop: 49873, Start Num: 24

Candidate Starts for Topper_73:

(Start: 24 @48686 has 120 MA's), (25, 48692), (Start: 35 @48812 has 1 MA's), (36, 48818), (42, 48836), (53, 48860), (61, 48905), (62, 48911), (63, 48914), (66, 48935), (69, 48947), (73, 49010), (76, 49037), (77, 49043), (79, 49064), (85, 49088), (90, 49106), (112, 49190), (113, 49193), (117, 49229), (118, 49232), (121, 49259), (122, 49268), (129, 49310), (167, 49442), (173, 49499), (183, 49559), (192, 49604), (194, 49610), (195, 49622), (212, 49697), (217, 49721), (219, 49748), (220, 49754), (221, 49769), (223, 49781), (230, 49823),

Gene: Torres_63 Start: 48349, Stop: 49530, Start Num: 24

Candidate Starts for Torres_63:

(Start: 24 @48349 has 120 MA's), (25, 48355), (26, 48367), (Start: 35 @48463 has 1 MA's), (41, 48487), (Start: 48 @48499 has 1 MA's), (54, 48523), (55, 48529), (60, 48541), (61, 48556), (62, 48562), (63, 48565), (66, 48586), (68, 48595), (69, 48598), (72, 48652), (73, 48658), (75, 48676), (77, 48691), (79, 48712), (80, 48715), (85, 48736), (94, 48763), (96, 48769), (101, 48787), (108, 48817), (112, 48838), (113, 48841), (116, 48868), (117, 48877), (121, 48907), (122, 48916), (123, 48928), (134, 48973), (145, 49000), (147, 49003), (155, 49036), (157, 49051), (159, 49057), (163, 49081), (165, 49090), (167, 49099), (171, 49132), (173, 49153), (175, 49162), (176, 49165), (180, 49186), (183, 49213), (190, 49252), (192, 49258), (195, 49276), (196, 49279), (198, 49288), (207, 49324), (212, 49351), (213, 49354), (214, 49360), (217, 49375), (219, 49402), (221, 49423), (222, 49426), (223, 49435), (235, 49519), (236, 49522),

Gene: TreyKay_76 Start: 49236, Stop: 50336, Start Num: 24

Candidate Starts for TreyKay_76:

(15, 49158), (16, 49167), (Start: 24 @49236 has 120 MA's), (25, 49242), (Start: 35 @49350 has 1 MA's), (42, 49377), (60, 49434), (62, 49455), (63, 49458), (66, 49479), (69, 49491), (73, 49554), (76, 49581), (77, 49587), (79, 49608), (84, 49629), (85, 49632), (90, 49650), (112, 49734), (113, 49737), (117, 49773), (118, 49776), (121, 49803), (122, 49812), (129, 49854), (145, 49890), (158, 49941), (167, 49986), (173, 50043), (180, 50076), (183, 50103), (190, 50142), (195, 50166), (230, 50286),

Gene: TribelTrouble_75 Start: 49560, Stop: 50477, Start Num: 49

Candidate Starts for TribelTrouble_75:

(Start: 49 @49560 has 9 MA's), (58, 49596), (66, 49647), (73, 49719), (76, 49746), (86, 49797), (102, 49842), (113, 49896), (115, 49920), (117, 49932), (120, 49959), (122, 49971), (154, 50061), (167, 50130), (168, 50142), (169, 50145), (173, 50184), (180, 50217), (182, 50241), (184, 50256), (199, 50331),

Gene: Trice_60 Start: 45736, Stop: 46917, Start Num: 24

Candidate Starts for Trice_60:

(Start: 24 @45736 has 120 MA's), (25, 45742), (26, 45754), (Start: 35 @45850 has 1 MA's), (41, 45874), (Start: 48 @45886 has 1 MA's), (54, 45910), (55, 45916), (60, 45928), (61, 45943), (62,

45949), (63, 45952), (66, 45973), (68, 45982), (69, 45985), (72, 46039), (73, 46045), (75, 46063), (77, 46078), (79, 46099), (80, 46102), (85, 46123), (94, 46150), (96, 46156), (101, 46174), (108, 46204), (112, 46225), (113, 46228), (116, 46255), (117, 46264), (121, 46294), (122, 46303), (123, 46315), (134, 46360), (145, 46387), (147, 46390), (155, 46423), (157, 46438), (159, 46444), (163, 46468), (165, 46477), (167, 46486), (171, 46519), (173, 46540), (175, 46549), (176, 46552), (180, 46573), (183, 46600), (190, 46639), (192, 46645), (195, 46663), (196, 46666), (198, 46675), (207, 46711), (212, 46738), (213, 46741), (214, 46747), (217, 46762), (219, 46789), (221, 46810), (222, 46813), (223, 46822), (235, 46906), (236, 46909),

Gene: TruffulaTree_75 Start: 49180, Stop: 50286, Start Num: 24

Candidate Starts for TruffulaTree_75:

(Start: 24 @49180 has 120 MA's), (25, 49186), (Start: 30 @49237 has 7 MA's), (Start: 35 @49306 has 1 MA's), (36, 49312), (42, 49330), (53, 49354), (61, 49399), (62, 49405), (63, 49408), (66, 49429), (69, 49441), (73, 49504), (75, 49522), (76, 49531), (77, 49537), (79, 49558), (85, 49582), (90, 49600), (103, 49636), (112, 49684), (113, 49687), (117, 49723), (118, 49726), (121, 49753), (122, 49762), (129, 49804), (136, 49819), (142, 49837), (167, 49936), (173, 49993), (180, 50026), (183, 50053), (192, 50098), (230, 50236),

Gene: Twitch_73 Start: 48688, Stop: 49875, Start Num: 24

Candidate Starts for Twitch_73:

(Start: 24 @48688 has 120 MA's), (25, 48694), (Start: 35 @48814 has 1 MA's), (36, 48820), (42, 48838), (53, 48862), (61, 48907), (62, 48913), (63, 48916), (66, 48937), (69, 48949), (73, 49012), (76, 49039), (77, 49045), (79, 49066), (85, 49090), (90, 49108), (112, 49192), (113, 49195), (117, 49231), (118, 49234), (121, 49261), (122, 49270), (129, 49312), (167, 49444), (173, 49501), (183, 49561), (192, 49606), (194, 49612), (195, 49624), (212, 49699), (217, 49723), (219, 49750), (220, 49756), (221, 49771), (223, 49783), (230, 49825),

Gene: Unicorn_76 Start: 48713, Stop: 49819, Start Num: 24

Candidate Starts for Unicorn_76:

(Start: 24 @48713 has 120 MA's), (25, 48719), (29, 48764), (Start: 35 @48827 has 1 MA's), (41, 48851), (53, 48875), (61, 48920), (63, 48929), (65, 48941), (66, 48950), (69, 48962), (73, 49022), (79, 49076), (80, 49079), (85, 49100), (112, 49202), (117, 49241), (122, 49280), (139, 49361), (141, 49367), (144, 49370), (153, 49391), (154, 49397), (159, 49424), (165, 49457), (167, 49466), (173, 49523), (175, 49532), (177, 49541), (178, 49544), (180, 49556), (183, 49583), (192, 49625),

Gene: Urkel_73 Start: 49181, Stop: 50269, Start Num: 24

Candidate Starts for Urkel_73:

(Start: 24 @49181 has 120 MA's), (25, 49187), (Start: 35 @49307 has 1 MA's), (42, 49334), (60, 49391), (62, 49412), (63, 49415), (66, 49436), (73, 49511), (76, 49538), (77, 49544), (79, 49565), (84, 49586), (85, 49589), (90, 49607), (112, 49691), (113, 49694), (117, 49730), (118, 49733), (121, 49760), (122, 49769), (149, 49835), (162, 49901), (167, 49922), (173, 49979), (180, 50012), (183, 50039), (195, 50099), (196, 50102), (230, 50219),

Gene: Validus_78 Start: 49542, Stop: 50633, Start Num: 24

Candidate Starts for Validus_78:

(Start: 24 @49542 has 120 MA's), (25, 49548), (27, 49566), (28, 49590), (29, 49593), (Start: 31 @49605 has 1 MA's), (Start: 35 @49656 has 1 MA's), (36, 49662), (Start: 48 @49692 has 1 MA's), (61, 49749), (62, 49755), (63, 49758), (66, 49779), (73, 49851), (76, 49878), (77, 49884), (78, 49890), (79, 49905), (85, 49929), (90, 49947), (112, 50031), (113, 50034), (114, 50037), (116, 50061), (121, 50100), (122, 50109), (131, 50151), (143, 50187), (152, 50199), (165, 50274), (167, 50283), (173, 50340), (178, 50361), (180, 50373), (183, 50400), (192, 50442), (195, 50460),

Gene: Veliki_74 Start: 48720, Stop: 49826, Start Num: 24

Candidate Starts for Veliki_74:

(2, 48552), (5, 48576), (8, 48585), (11, 48597), (12, 48603), (15, 48642), (Start: 24 @48720 has 120 MA's), (25, 48726), (Start: 35 @48846 has 1 MA's), (36, 48852), (38, 48861), (42, 48870), (53, 48894), (61, 48939), (62, 48945), (63, 48948), (66, 48969), (69, 48981), (73, 49044), (76, 49071), (77, 49077), (79, 49098), (85, 49122), (90, 49140), (103, 49176), (112, 49224), (113, 49227), (117, 49263), (118, 49266), (121, 49293), (122, 49302), (129, 49344), (136, 49359), (142, 49377), (167, 49476), (173, 49533), (180, 49566), (183, 49593), (192, 49638), (195, 49656), (230, 49776),

Gene: ViviJ_65 Start: 45982, Stop: 46839, Start Num: 45

Candidate Starts for ViviJ_65:

(33, 45919), (Start: 45 @45982 has 25 MA's), (59, 46024), (62, 46048), (66, 46072), (73, 46144), (79, 46198), (89, 46231), (106, 46282), (108, 46288), (112, 46309), (113, 46312), (118, 46351), (130, 46426), (131, 46429), (141, 46459), (154, 46486), (163, 46537), (166, 46552), (173, 46609), (176, 46621), (189, 46696), (192, 46711), (195, 46729), (198, 46741), (204, 46765), (209, 46777),

Gene: Waterfoul_68 Start: 48313, Stop: 49149, Start Num: 45

Candidate Starts for Waterfoul_68:

(20, 48121), (22, 48154), (33, 48250), (Start: 45 @48313 has 25 MA's), (59, 48355), (62, 48379), (66, 48403), (72, 48469), (73, 48475), (80, 48532), (89, 48562), (106, 48613), (112, 48640), (113, 48643), (118, 48682), (122, 48718), (123, 48730), (130, 48757), (131, 48760), (133, 48766), (141, 48790), (160, 48847), (166, 48883), (173, 48940), (176, 48952), (177, 48958), (183, 49000), (188, 49024), (192, 49042), (195, 49060), (196, 49063), (198, 49072),

Gene: Wintermute_78 Start: 49845, Stop: 50723, Start Num: 47

Candidate Starts for Wintermute_78:

(Start: 47 @49845 has 23 MA's), (60, 49890), (64, 49923), (67, 49953), (71, 50004), (76, 50046), (77, 50052), (79, 50073), (82, 50085), (92, 50118), (98, 50127), (110, 50184), (112, 50193), (113, 50196), (115, 50220), (121, 50262), (123, 50283), (153, 50334), (154, 50340), (158, 50364), (159, 50367), (163, 50391), (165, 50400), (174, 50466), (179, 50490), (180, 50496), (183, 50523), (184, 50532), (187, 50544), (202, 50619),

Gene: Ximenita_78 Start: 49071, Stop: 50171, Start Num: 24

Candidate Starts for Ximenita_78:

(Start: 24 @49071 has 120 MA's), (25, 49077), (29, 49122), (Start: 35 @49185 has 1 MA's), (41, 49209), (66, 49308), (73, 49380), (79, 49434), (80, 49437), (112, 49560), (117, 49599), (139, 49716), (144, 49725), (156, 49770), (159, 49782), (173, 49878), (175, 49887), (177, 49896), (178, 49899), (180, 49911), (183, 49938), (192, 49980), (232, 50133),

Gene: Y10_75 Start: 49773, Stop: 50651, Start Num: 47

Candidate Starts for Y10_75:

(Start: 47 @49773 has 23 MA's), (60, 49818), (64, 49851), (67, 49881), (71, 49932), (76, 49974), (77, 49980), (82, 50013), (92, 50046), (98, 50055), (110, 50112), (112, 50121), (113, 50124), (115, 50148), (121, 50190), (123, 50211), (153, 50262), (154, 50268), (158, 50292), (159, 50295), (163, 50319), (165, 50328), (174, 50394), (175, 50400), (179, 50418), (180, 50424), (183, 50451), (184, 50460), (187, 50472), (202, 50547),

Gene: Y2_75 Start: 49773, Stop: 50651, Start Num: 47

Candidate Starts for Y2_75:

(Start: 47 @49773 has 23 MA's), (60, 49818), (64, 49851), (67, 49881), (71, 49932), (76, 49974), (77, 49980), (82, 50013), (92, 50046), (98, 50055), (110, 50112), (112, 50121), (113, 50124), (115, 50148), (121, 50190), (123, 50211), (153, 50262), (154, 50268), (158, 50292), (159, 50295), (163, 50319), (165, 50328), (174, 50394), (175, 50400), (179, 50418), (180, 50424), (183, 50451), (184, 50460), (187, 50472), (202, 50547),

Gene: YasnayaPolyana_77 Start: 49748, Stop: 50626, Start Num: 47

Candidate Starts for YasnayaPolyana_77:

(Start: 47 @49748 has 23 MA's), (60, 49793), (64, 49826), (67, 49856), (71, 49907), (76, 49949), (77, 49955), (79, 49976), (82, 49988), (92, 50021), (98, 50030), (110, 50087), (112, 50096), (113, 50099), (115, 50123), (121, 50165), (123, 50186), (153, 50237), (154, 50243), (158, 50267), (159, 50270), (163, 50294), (165, 50303), (169, 50327), (174, 50369), (175, 50375), (179, 50393), (180, 50399), (183, 50426), (184, 50435), (187, 50447), (202, 50522),

Gene: YoureAdopted_73 Start: 49050, Stop: 50237, Start Num: 24

Candidate Starts for YoureAdopted_73:

(Start: 24 @49050 has 120 MA's), (25, 49056), (Start: 30 @49107 has 7 MA's), (Start: 35 @49176 has 1 MA's), (36, 49182), (42, 49200), (Start: 48 @49212 has 1 MA's), (53, 49224), (61, 49269), (62, 49275), (63, 49278), (66, 49299), (69, 49311), (73, 49374), (75, 49392), (76, 49401), (77, 49407), (79, 49428), (85, 49452), (90, 49470), (112, 49554), (113, 49557), (117, 49593), (118, 49596), (121, 49623), (122, 49632), (129, 49674), (167, 49806), (173, 49863), (183, 49923), (192, 49968), (194, 49974), (195, 49986), (212, 50061), (217, 50085), (219, 50112), (220, 50118), (221, 50133), (223, 50145), (230, 50187),

Gene: Yuna_76 Start: 50152, Stop: 51321, Start Num: 23

Candidate Starts for Yuna_76:

(15, 50080), (Start: 23 @50152 has 6 MA's), (25, 50161), (29, 50206), (Start: 35 @50269 has 1 MA's), (55, 50335), (62, 50368), (64, 50380), (66, 50392), (73, 50467), (85, 50545), (112, 50647), (117, 50686), (144, 50797), (171, 50926), (173, 50947), (178, 50968), (180, 50980), (183, 51007), (192, 51052), (195, 51070), (210, 51130), (212, 51145), (220, 51202), (226, 51250),

Gene: Yunkel11_79 Start: 49270, Stop: 50454, Start Num: 24

Candidate Starts for Yunkel11_79:

(Start: 24 @49270 has 120 MA's), (25, 49276), (28, 49318), (29, 49321), (Start: 31 @49333 has 1 MA's), (Start: 35 @49384 has 1 MA's), (36, 49390), (42, 49411), (46, 49420), (52, 49432), (62, 49489), (63, 49492), (66, 49513), (73, 49588), (76, 49615), (77, 49621), (79, 49642), (84, 49663), (85, 49666), (112, 49768), (113, 49771), (117, 49807), (118, 49810), (121, 49837), (122, 49846), (129, 49888), (136, 49903), (145, 49924), (158, 49975), (159, 49978), (160, 49981), (173, 50077), (178, 50098), (180, 50110), (183, 50137), (192, 50182), (195, 50200), (212, 50275), (219, 50326), (221, 50347), (222, 50350), (226, 50380), (233, 50425),

Gene: Zabiza_69 Start: 45036, Stop: 46223, Start Num: 24

Candidate Starts for Zabiza_69:

(Start: 24 @45036 has 120 MA's), (25, 45042), (Start: 35 @45162 has 1 MA's), (36, 45168), (Start: 48 @45198 has 1 MA's), (53, 45210), (61, 45255), (62, 45261), (63, 45264), (66, 45285), (69, 45297), (73, 45360), (75, 45378), (76, 45387), (77, 45393), (79, 45414), (85, 45438), (90, 45456), (112, 45540), (113, 45543), (117, 45579), (118, 45582), (121, 45609), (122, 45618), (129, 45660), (167, 45792), (173, 45849), (183, 45909), (192, 45954), (194, 45960), (195, 45972), (212, 46047), (217, 46071), (219, 46098), (220, 46104), (221, 46119), (223, 46131), (230, 46173),

Gene: Zavala_76 Start: 49258, Stop: 50364, Start Num: 24

Candidate Starts for Zavala_76:

(2, 49090), (5, 49114), (8, 49123), (12, 49141), (15, 49180), (Start: 24 @49258 has 120 MA's), (25, 49264), (Start: 30 @49315 has 7 MA's), (Start: 35 @49384 has 1 MA's), (36, 49390), (42, 49408), (53, 49432), (61, 49477), (62, 49483), (63, 49486), (66, 49507), (69, 49519), (73, 49582), (75, 49600), (76, 49609), (77, 49615), (79, 49636), (85, 49660), (90, 49678), (112, 49762), (113, 49765), (117, 49801), (118, 49804), (121, 49831), (122, 49840), (129, 49882), (136, 49897), (142, 49915), (173, 50071), (180, 50104), (183, 50131), (192, 50176), (195, 50194), (230, 50314),

Gene: ZoeJ_76 Start: 50548, Stop: 51450, Start Num: 50

Candidate Starts for ZoeJ_76:

(Start: 50 @50548 has 11 MA's), (60, 50590), (73, 50725), (107, 50860), (108, 50863), (110, 50875),
(113, 50887), (136, 51001), (159, 51073), (173, 51169), (180, 51202), (181, 51223), (182, 51226),
(183, 51229), (187, 51250), (193, 51280), (203, 51328), (227, 51433),