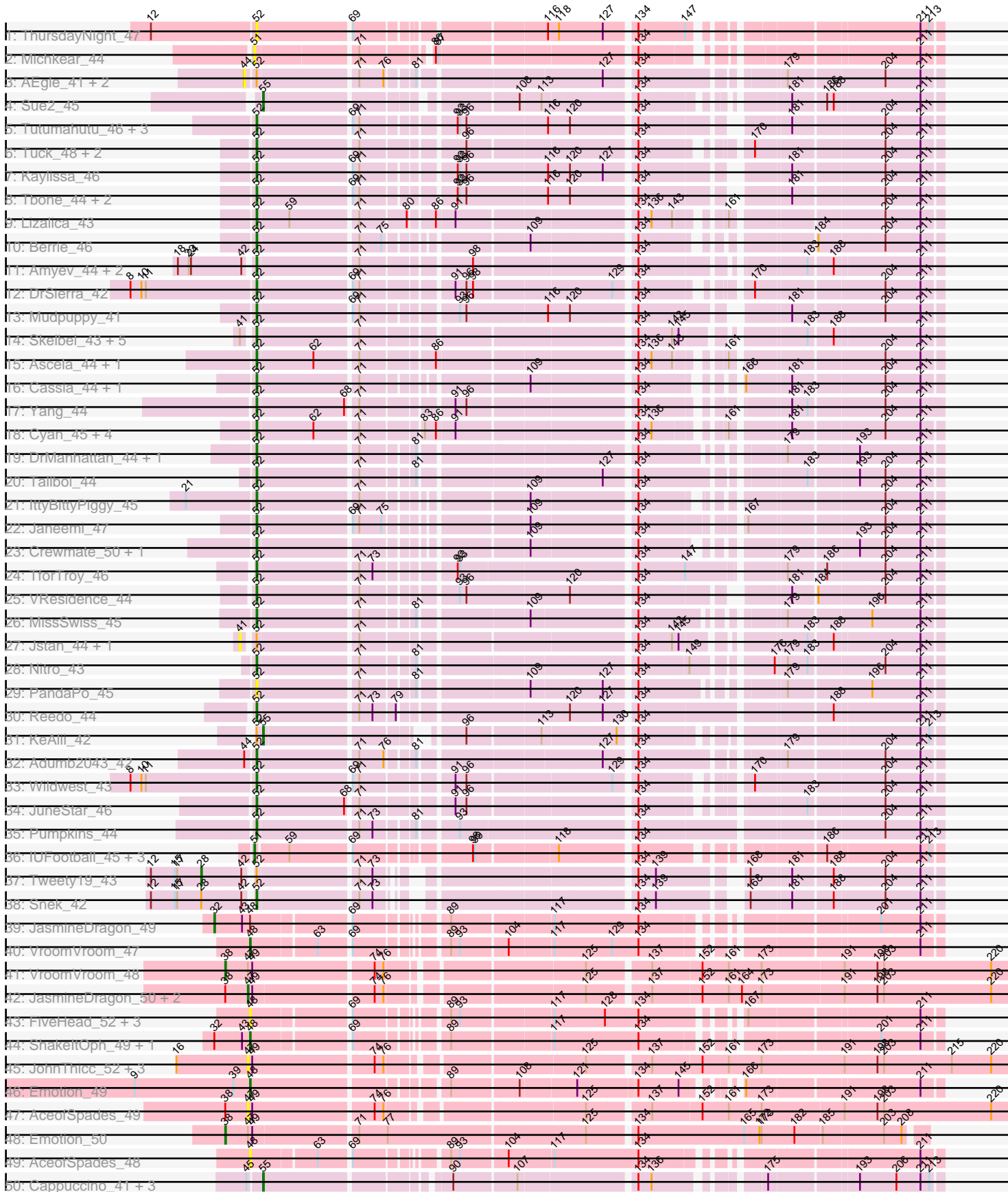
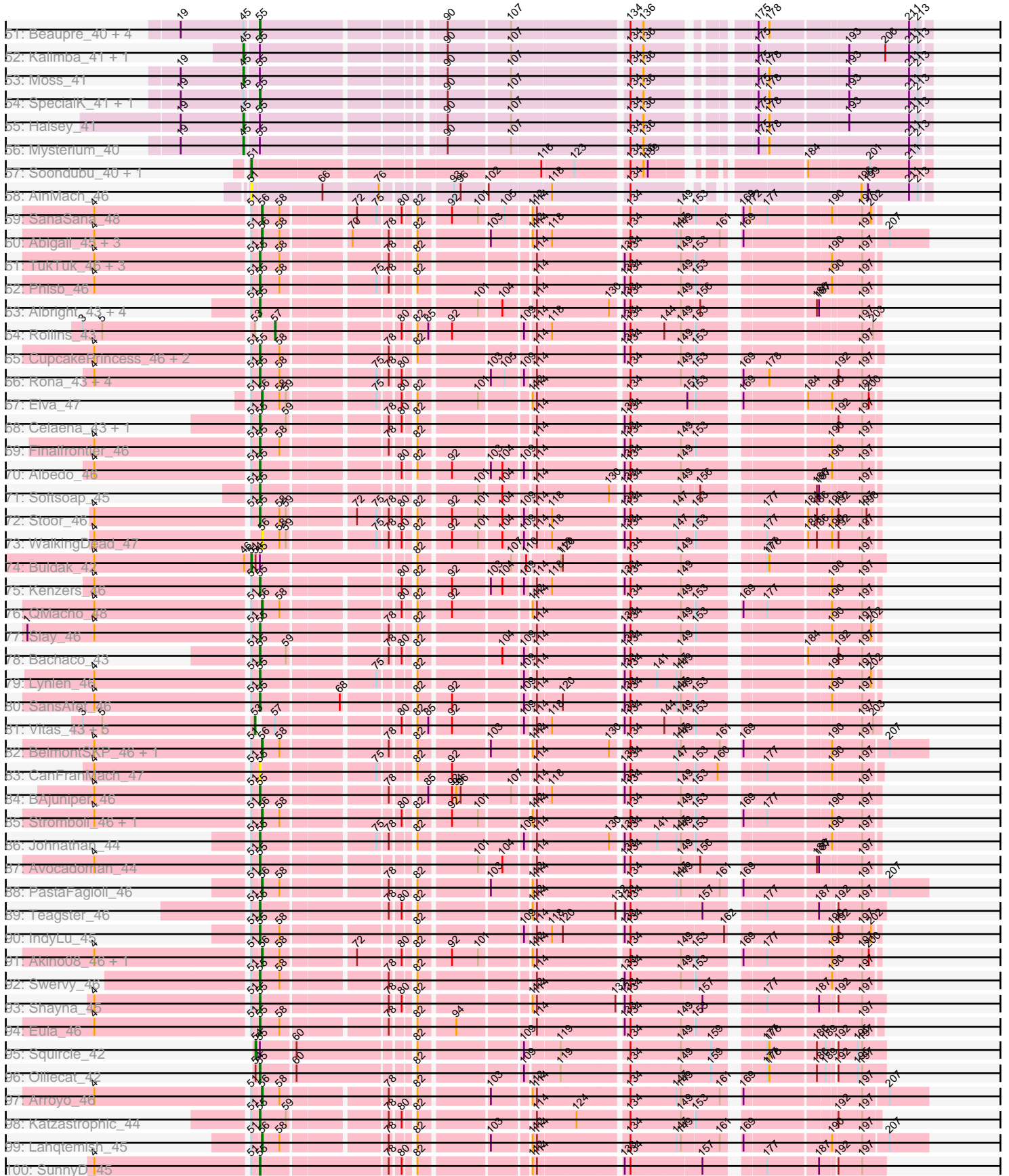


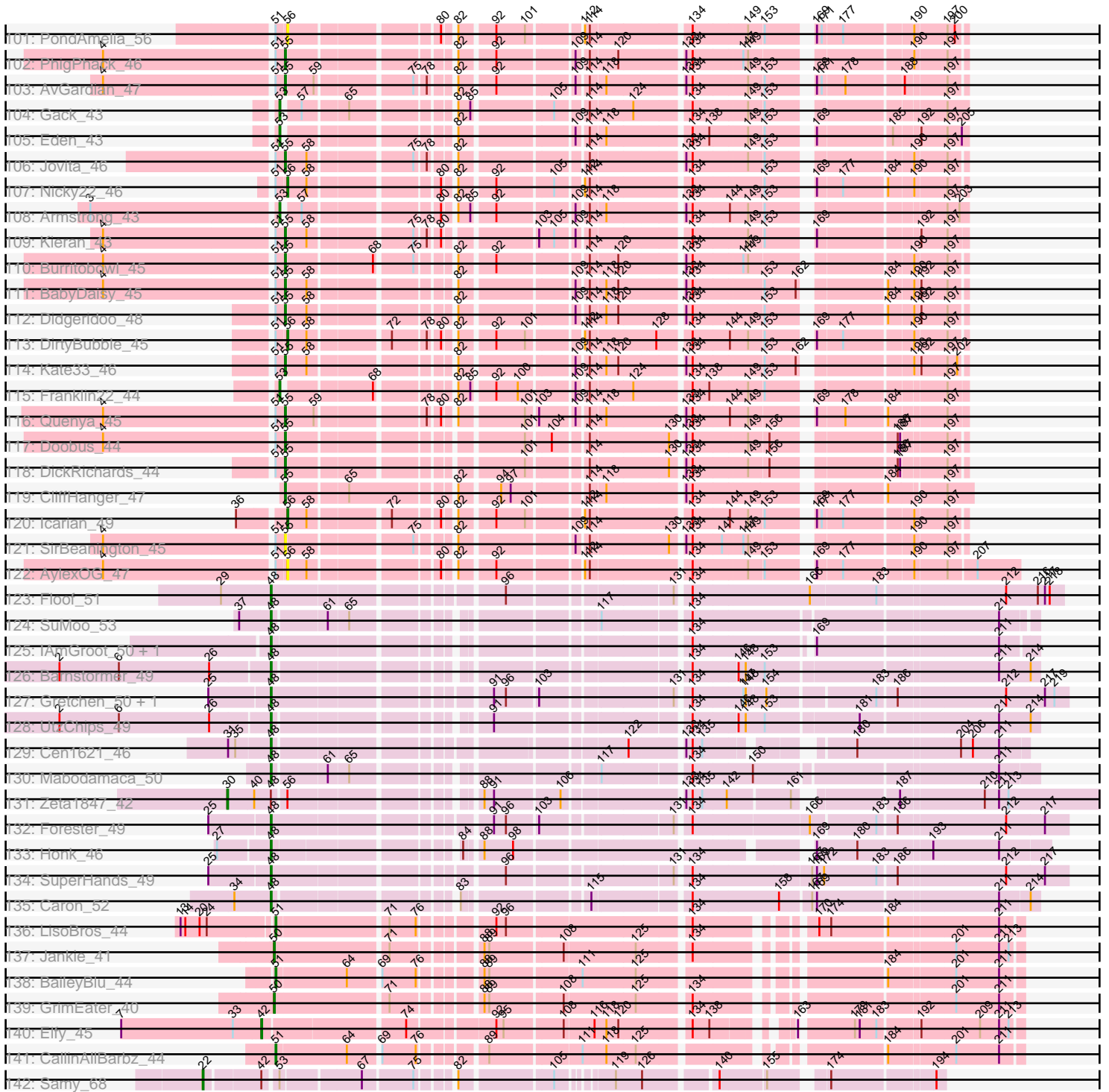
Pham 308081



Pham 308081



Pham 308081



Note: Tracks are now grouped by subcluster and scaled. Switching in subcluster is indicated by changes in track color. Track scale is now set by default to display the region 30 bp upstream of start 1 to 30 bp downstream of the last possible start. If this default region is judged to be packed too tightly with annotated starts, the track will be further scaled to only show that region of the ORF with annotated starts. This action will be indicated by adding "Zoomed" to the title. For starts, yellow indicates the location of called starts comprised solely of Glimmer/GeneMark auto-annotations, green indicates the location of called starts with at least 1 manual gene annotation.

Pham 308081 Report

This analysis was run 06/27/26 on database version 652.

Pham number 308081 has 216 members, 35 are drafts.

Phages represented in each track:

- Track 1 : ThursdayNight_47
- Track 2 : Michkear_44
- Track 3 : AEgle_41, Amploria_43, Turab_42
- Track 4 : Sue2_45
- Track 5 : Tutumahutu_46, Powerpuff_47, Lego_44, YesChef_45
- Track 6 : Tuck_48, Community_47, Phives_48
- Track 7 : Kaylissa_46
- Track 8 : Tbone_44, Warda_45, AGrandiflora_47
- Track 9 : Lizalica_43
- Track 10 : Berrie_46
- Track 11 : Amyev_44, Pixelle_45, Tian_43
- Track 12 : DrSierra_42
- Track 13 : Mudpuppy_41
- Track 14 : Skelbel_43, Asa16_42, Niobe_42, Eraser_42, London_42, Elezi_42
- Track 15 : Ascela_44, Iter_44
- Track 16 : Cassia_44, Schaffner_45
- Track 17 : Yang_44
- Track 18 : Cyan_45, Flutur_44, JohnDoe_45, Joemato_45, Simpson_47
- Track 19 : DrManhattan_44, Adolin_45
- Track 20 : Tallboi_44
- Track 21 : IttyBittyPiggy_45
- Track 22 : Janeemi_47
- Track 23 : Crewmate_50, ObiToo_50
- Track 24 : TforTroy_46
- Track 25 : VResidence_44
- Track 26 : MissSwiss_45
- Track 27 : Jstan_44, Subaru_43
- Track 28 : Nitro_43
- Track 29 : PandaPo_45
- Track 30 : Reedo_44
- Track 31 : KeAlii_42
- Track 32 : Adumb2043_42
- Track 33 : Wildwest_43
- Track 34 : JuneStar_46
- Track 35 : Pumpkins_44
- Track 36 : IUFootball_45, MaGuCo_42, Liebe_45, Maureen_45
- Track 37 : Tweety19_43

- Track 38 : Snek_42
- Track 39 : JasmineDragon_49
- Track 40 : VroomVroom_47
- Track 41 : VroomVroom_48
- Track 42 : JasmineDragon_50, MiniMommy_50, ShakeltOph_50
- Track 43 : FiveHead_52, JohnThicc_51, LadyAstra_51, Origami_50
- Track 44 : ShakeltOph_49, MiniMommy_49
- Track 45 : JohnThicc_52, FiveHead_53, LadyAstra_52, Origami_51
- Track 46 : Emotion_49
- Track 47 : AceofSpades_49
- Track 48 : Emotion_50
- Track 49 : AceofSpades_48
- Track 50 : Cappuccino_41, Gambol_42, Sabourin_41, Sooty_41
- Track 51 : Beaupre_40, Giorgio_40, Gumpizza_40, Ashes_41, RockScotty_40
- Track 52 : Kalimba_41, Donkey_41
- Track 53 : Moss_41
- Track 54 : SpecialK_41, Stuu_41
- Track 55 : Halsey_41
- Track 56 : Mysterium_40
- Track 57 : Soondubu_40, Exile_39
- Track 58 : AinMach_46
- Track 59 : SanaSana_48
- Track 60 : Abigail_45, LimaBean_45, Bengal_46, CroZenni_45
- Track 61 : TukTuk_46, SarBear_45, Lilo27_46, Pecas_47
- Track 62 : Phisb_46
- Track 63 : Albright_43, Cashington_43, BubbaBear_44, Milomuff_45, Solea_46
- Track 64 : Rollins_43
- Track 65 : CupcakePrincess_46, Jabb_46, MsUbiquitous_46
- Track 66 : Rona_43, ChiliPepper_43, Dismas_43, Kamdara_43, Sharkboy_44
- Track 67 : Elva_47
- Track 68 : Celaena_43, FlameThrower_43
- Track 69 : Finalfrontier_46
- Track 70 : Albedo_46
- Track 71 : Softsoap_45
- Track 72 : Stoor_46
- Track 73 : WalkingDead_47
- Track 74 : Buldak_42
- Track 75 : Kenzers_46
- Track 76 : QMacho_48
- Track 77 : Slay_46
- Track 78 : Bachaco_43
- Track 79 : Lynlen_46
- Track 80 : SansAfet_46
- Track 81 : Vitas_43, Bernstein_43, Skylord_43, Brahms_43, Coltrane_43, Clayda5_44
- Track 82 : BelmontSKP_46, AnnaLie_46
- Track 83 : CanFranMach_47
- Track 84 : BAjuniper_46
- Track 85 : Stromboli_46, BabyYoda_46
- Track 86 : Johnathan_44
- Track 87 : Avocadoman_44
- Track 88 : PastaFagioli_46
- Track 89 : Teagster_46

- Track 90 : IndyLu_45
- Track 91 : Akino08_46, Loviatar_46
- Track 92 : Swervy_46
- Track 93 : Shayna_45
- Track 94 : Eula_46
- Track 95 : Squircle_42
- Track 96 : Olliecat_42
- Track 97 : Arroyo_46
- Track 98 : Katzastrophic_44
- Track 99 : Lahqtemish_45
- Track 100 : SunnyD_45
- Track 101 : PondAmelia_56
- Track 102 : PhigPhack_46
- Track 103 : AvGardian_47
- Track 104 : Gack_43
- Track 105 : Eden_43
- Track 106 : Jovita_46
- Track 107 : Nicky22_46
- Track 108 : Armstrong_43
- Track 109 : Kieran_43
- Track 110 : Burritobowl_45
- Track 111 : BabyDaisy_45
- Track 112 : Didgeridoo_48
- Track 113 : DirtyBubble_45
- Track 114 : Kate33_46
- Track 115 : Franklin22_44
- Track 116 : Quenya_45
- Track 117 : Doobus_44
- Track 118 : DickRichards_44
- Track 119 : CliffHanger_47
- Track 120 : Icarian_49
- Track 121 : SirBeanington_45
- Track 122 : AylexOG_47
- Track 123 : Floof_51
- Track 124 : SuMoo_53
- Track 125 : IAmGroot_50, GardenState_50
- Track 126 : Barnstormer_49
- Track 127 : Gretchen_50, Percival_51
- Track 128 : UtzChips_49
- Track 129 : Cen1621_46
- Track 130 : Mabodamaca_50
- Track 131 : Zeta1847_42
- Track 132 : Forester_49
- Track 133 : Honk_46
- Track 134 : SuperHands_49
- Track 135 : Caron_52
- Track 136 : LisoBros_44
- Track 137 : Jankie_41
- Track 138 : BaileyBlu_44
- Track 139 : GrimEater_40
- Track 140 : Elfy_45
- Track 141 : CallinAllBarbz_44
- Track 142 : Samy_68

Summary of Final Annotations (See graph section above for start numbers):

The start number called the most often in the published annotations is 55, it was called in 62 of the 181 non-draft genes in the pham.

Genes that call this "Most Annotated" start:

- Albedo_46, Albright_43, Ashes_41, AvGardian_47, Avocadoman_44, BAjuniper_46, BabyDaisy_45, Bachaco_43, Beaupre_40, BubbaBear_44, Burritobowl_45, CanFranMach_47, Cappuccino_41, Cashington_43, Celaena_43, ChiliPepper_43, CliffHanger_47, CupcakePrincess_46, DickRichards_44, Didgeridoo_48, Dismas_43, Doobus_44, Eula_46, Finalfrontier_46, FlameThrower_43, Gambol_42, Giorgio_40, Gumpizza_40, IndyLu_45, Jabb_46, Johnathan_44, Jovita_46, Kamdara_43, Kate33_46, Katzastrophic_44, KeAlii_42, Kenzers_46, Kieran_43, Lilo27_46, Lynlen_46, Milomuff_45, MsUbiquitous_46, Olliecat_42, Pecas_47, PhigPhack_46, Phisb_46, Quenya_45, RockScotty_40, Rona_43, Sabourin_41, SansAfet_46, SarBear_45, Sharkboy_44, Shayna_45, SirBeanington_45, Slay_46, Softsoap_45, Solea_46, Sooty_41, SpecialK_41, Stoor_46, Stuu_41, Sue2_45, SunnyD_45, Swervy_46, Teagster_46, TukTuk_46,

Genes that have the "Most Annotated" start but do not call it:

- Buldak_42, Donkey_41, Halsey_41, Kalimba_41, Moss_41, Mysterium_40, Squirrel_42,

Genes that do not have the "Most Annotated" start:

- AEgle_41, AGrandiflora_47, Abigail_45, AceofSpades_48, AceofSpades_49, Adolin_45, Adumb2043_42, AinMach_46, Akino08_46, Amploria_43, Amyev_44, AnnaLie_46, Armstrong_43, Arroyo_46, Asa16_42, Ascela_44, AylexOG_47, BabyYoda_46, BaileyBlu_44, Barnstormer_49, BelmontSKP_46, Bengal_46, Bernstein_43, Berrie_46, Brahms_43, CallinAllBarbz_44, Caron_52, Cassia_44, Cen1621_46, Clayda5_44, Coltrane_43, Community_47, Crewmate_50, CroZenni_45, Cyan_45, DirtyBubble_45, DrManhattan_44, DrSierra_42, Eden_43, Elezi_42, Elfy_45, Elva_47, Emotion_49, Emotion_50, Eraser_42, Exile_39, FiveHead_52, FiveHead_53, Floof_51, Flutur_44, Forester_49, Franklin22_44, Gack_43, GardenState_50, Gretchen_50, GrimEater_40, Honk_46, IAmGroot_50, IUFootball_45, Icarian_49, Iter_44, IttyBittyPiggy_45, Janeemi_47, Jankie_41, JasmineDragon_49, JasmineDragon_50, Joemato_45, JohnDoe_45, JohnThicc_51, JohnThicc_52, Jstan_44, JuneStar_46, Kaylissa_46, LadyAstra_51, LadyAstra_52, Lahqtemish_45, Lego_44, Liebe_45, LimaBean_45, LisoBros_44, Lizalica_43, London_42, Loviatar_46, MaGuCo_42, Mabodamaca_50, Maureen_45, Michkear_44, MiniMommy_49, MiniMommy_50, MissSwiss_45, Mudpuppy_41, Nicky22_46, Niobe_42, Nitro_43, ObiToo_50, Origami_50, Origami_51, PandaPo_45, PastaFagioli_46, Percival_51, Phives_48, Pixelle_45, PondAmelia_56, Powerpuff_47, Pumpkins_44, QMacho_48, Reedo_44, Rollins_43, Samy_68, SanaSana_48, Schaffner_45, ShakeltOph_49, ShakeltOph_50, Simpson_47, Skelbel_43, Skylord_43, Snek_42, Soondubu_40, Stromboli_46, SuMoo_53, Subaru_43, SuperHands_49, Tallboi_44, Tbone_44, TforTroy_46, ThursdayNight_47, Tian_43, Tuck_48, Turab_42, Tutumahutu_46, Tweety19_43, UtzChips_49, VResidence_44, Vitas_43, VroomVroom_47, VroomVroom_48, WalkingDead_47, Warda_45, Wildwest_43, Yang_44, YesChef_45, Zeta1847_42,

Summary by start number:

Start 22:

- Found in 1 of 216 (0.5%) of genes in pham
- Manual Annotations of this start: 1 of 181
- Called 100.0% of time when present
- Phage (with cluster) where this start called: Samy_68 (singleton),

Start 28:

- Found in 2 of 216 (0.9%) of genes in pham
- Manual Annotations of this start: 1 of 181
- Called 50.0% of time when present
- Phage (with cluster) where this start called: Tweety19_43 (AZ3),

Start 30:

- Found in 1 of 216 (0.5%) of genes in pham
- Manual Annotations of this start: 1 of 181
- Called 100.0% of time when present
- Phage (with cluster) where this start called: Zeta1847_42 (EH),

Start 32:

- Found in 3 of 216 (1.4%) of genes in pham
- Manual Annotations of this start: 1 of 181
- Called 33.3% of time when present
- Phage (with cluster) where this start called: JasmineDragon_49 (AZ4),

Start 38:

- Found in 6 of 216 (2.8%) of genes in pham
- Manual Annotations of this start: 2 of 181
- Called 33.3% of time when present
- Phage (with cluster) where this start called: Emotion_50 (AZ4), VroomVroom_48 (AZ4),

Start 41:

- Found in 8 of 216 (3.7%) of genes in pham
- No Manual Annotations of this start.
- Called 25.0% of time when present
- Phage (with cluster) where this start called: Jstan_44 (AZ1), Subaru_43 (AZ1),

Start 42:

- Found in 7 of 216 (3.2%) of genes in pham
- Manual Annotations of this start: 1 of 181
- Called 14.3% of time when present
- Phage (with cluster) where this start called: Elfy_45 (FP),

Start 44:

- Found in 4 of 216 (1.9%) of genes in pham
- No Manual Annotations of this start.
- Called 75.0% of time when present
- Phage (with cluster) where this start called: AEgle_41 (AZ1), Amploria_43 (AZ1), Turab_42 (AZ1),

Start 45:

- Found in 16 of 216 (7.4%) of genes in pham
- Manual Annotations of this start: 5 of 181
- Called 31.2% of time when present
- Phage (with cluster) where this start called: Donkey_41 (AZ5), Halsey_41 (AZ5), Kalimba_41 (AZ5), Moss_41 (AZ5), Mysterium_40 (AZ5),

Start 47:

- Found in 10 of 216 (4.6%) of genes in pham
- Manual Annotations of this start: 3 of 181
- Called 80.0% of time when present
- Phage (with cluster) where this start called: AceofSpades_49 (AZ4), FiveHead_53 (AZ4), JasmineDragon_50 (AZ4), JohnThicc_52 (AZ4), LadyAstra_52 (AZ4), MiniMommy_50 (AZ4), Origami_51 (AZ4), ShakeltOph_50 (AZ4),

Start 48:

- Found in 25 of 216 (11.6%) of genes in pham
- Manual Annotations of this start: 18 of 181
- Called 92.0% of time when present
- Phage (with cluster) where this start called: AceofSpades_48 (AZ4), Barnstormer_49 (EH), Caron_52 (EH), Cen1621_46 (EH), Emotion_49 (AZ4), FiveHead_52 (AZ4), Floop_51 (EH), Forester_49 (EH), GardenState_50 (EH), Gretchen_50 (EH), Honk_46 (EH), IAmGroot_50 (EH), JohnThicc_51 (AZ4), LadyAstra_51 (AZ4), Mabodamaca_50 (EH), MiniMommy_49 (AZ4), Origami_50 (AZ4), Percival_51 (EH), ShakeltOph_49 (AZ4), SuMoo_53 (EH), SuperHands_49 (EH), UtzChips_49 (EH), VroomVroom_47 (AZ4),

Start 50:

- Found in 2 of 216 (0.9%) of genes in pham
- Manual Annotations of this start: 2 of 181
- Called 100.0% of time when present
- Phage (with cluster) where this start called: GrimEater_40 (FP), Jankie_41 (FP),

Start 51:

- Found in 84 of 216 (38.9%) of genes in pham
- Manual Annotations of this start: 8 of 181
- Called 14.3% of time when present
- Phage (with cluster) where this start called: AinMach_46 (AZ7), BaileyBlu_44 (FP), Buldak_42 (EB), CallinAllBarbz_44 (FP), Exile_39 (AZ6), IUFootball_45 (AZ2), Liebe_45 (AZ2), LisoBros_44 (FP), MaGuCo_42 (AZ2), Maureen_45 (AZ2), Michkear_44 (AZ), Soondubu_40 (AZ6),

Start 52:

- Found in 60 of 216 (27.8%) of genes in pham
- Manual Annotations of this start: 45 of 181
- Called 88.3% of time when present
- Phage (with cluster) where this start called: AGrandiflora_47 (AZ1), Adolin_45 (AZ1), Adumb2043_42 (AZ1), Amyev_44 (AZ1), Asa16_42 (AZ1), Ascela_44 (AZ1), Berrie_46 (AZ1), Cassia_44 (AZ1), Community_47 (AZ1), Crewmate_50 (AZ1), Cyan_45 (AZ1), DrManhattan_44 (AZ1), DrSierra_42 (AZ1), Elezi_42 (AZ1), Eraser_42 (AZ1), Flutur_44 (AZ), Iter_44 (AZ1), IttyBittyPiggy_45 (AZ1), Janeemi_47 (AZ1), Joemato_45 (AZ1), JohnDoe_45 (AZ1), JuneStar_46 (AZ1), Kaylissa_46 (AZ1), Lego_44 (AZ1), Lizalica_43 (AZ1), London_42 (AZ1), MissSwiss_45 (AZ1),

Mudpuppy_41 (AZ1), Niobe_42 (AZ1), Nitro_43 (AZ1), ObiToo_50 (AZ1), PandaPo_45 (AZ1), Phives_48 (AZ1), Pixelle_45 (AZ1), Powerpuff_47 (AZ1), Pumpkins_44 (AZ1), Reedo_44 (AZ1), Schaffner_45 (AZ1), Simpson_47 (AZ1), Skelbel_43 (AZ1), Snek_42 (AZ3), Tallboi_44 (AZ1), Tbone_44 (AZ1), TforTroy_46 (AZ1), ThursdayNight_47 (AZ), Tian_43 (AZ1), Tuck_48 (AZ1), Tutumahutu_46 (AZ1), VResidence_44 (AZ1), Warda_45 (AZ1), Wildwest_43 (AZ1), Yang_44 (AZ1), YesChef_45 (AZ1),

Start 53:

- Found in 12 of 216 (5.6%) of genes in pham
- Manual Annotations of this start: 10 of 181
- Called 83.3% of time when present
- Phage (with cluster) where this start called: Armstrong_43 (EB), Bernstein_43 (EB), Brahms_43 (EB), Clayda5_44 (EB), Coltrane_43 (EB), Eden_43 (EB), Franklin22_44 (EB), Gack_43 (EB), Skylord_43 (EB), Vitas_43 (EB),

Start 54:

- Found in 3 of 216 (1.4%) of genes in pham
- Manual Annotations of this start: 1 of 181
- Called 33.3% of time when present
- Phage (with cluster) where this start called: Squiracle_42 (EB),

Start 55:

- Found in 74 of 216 (34.3%) of genes in pham
- Manual Annotations of this start: 62 of 181
- Called 90.5% of time when present
- Phage (with cluster) where this start called: Albedo_46 (EB), Albright_43 (EB), Ashes_41 (AZ5), AvGardian_47 (EB), Avocadoman_44 (EB), BAjuniper_46 (EB), BabyDaisy_45 (EB), Bachaco_43 (EB), Beaupre_40 (AZ5), BubbaBear_44 (EB), Burritobowl_45 (EB), CanFranMach_47 (EB), Cappuccino_41 (AZ5), Cashington_43 (EB), Celaena_43 (EB), ChiliPepper_43 (EB), CliffHanger_47 (EB), CupcakePrincess_46 (EB), DickRichards_44 (EB), Didgeeridoo_48 (EB), Dismas_43 (EB), Doobus_44 (EB), Eula_46 (EB), Finalfrontier_46 (EB), FlameThrower_43 (EB), Gambol_42 (AZ5), Giorgio_40 (AZ5), Gumpizza_40 (AZ5), IndyLu_45 (EB), Jabb_46 (EB), Johnathan_44 (EB), Jovita_46 (EB), Kamdara_43 (EB), Kate33_46 (EB), Katzastrophic_44 (EB), KeAlii_42 (AZ1), Kenzers_46 (EB), Kieran_43 (EB), Lilo27_46 (EB), Lynlen_46 (EB), Milomuff_45 (EB), MsUbiquitous_46 (EB), Ollicat_42 (EB), Pecas_47 (EB), PhigPhack_46 (EB), Phisb_46 (EB), Quenya_45 (EB), RockScotty_40 (AZ5), Rona_43 (EB), Sabourin_41 (AZ5), SansAfet_46 (EB), SarBear_45 (EB), Sharkboy_44 (EB), Shayna_45 (EB), SirBeanington_45 (EB), Slay_46 (EB), Softsoap_45 (EB), Solea_46 (EB), Sooty_41 (AZ5), SpecialK_41 (AZ5), Stoor_46 (EB), Stuu_41 (AZ5), Sue2_45 (AZ1), SunnyD_45 (EB), Swervy_46 (EB), Teagster_46 (EB), TukTuk_46 (EB),

Start 56:

- Found in 23 of 216 (10.6%) of genes in pham
- Manual Annotations of this start: 19 of 181
- Called 95.7% of time when present
- Phage (with cluster) where this start called: Abigail_45 (EB), Akino08_46 (EB), AnnaLie_46 (EB), Arroyo_46 (EB), AylexOG_47 (EB), BabyYoda_46 (EB), BelmontSKP_46 (EB), Bengal_46 (EB), CroZenni_45 (EB), DirtyBubble_45 (EB), Elva_47 (EB), Icarian_49 (EB), Lahqtemish_45 (EB), LimaBean_45 (EB), Loviatar_46 (EB), Nicky22_46 (EB), PastaFagioli_46 (EB), PondAmelia_56 (EB), QMacho_48

(EB), SanaSana_48 (EB), Stromboli_46 (EB), WalkingDead_47 (EB),

Start 57:

- Found in 9 of 216 (4.2%) of genes in pham
- Manual Annotations of this start: 1 of 181
- Called 11.1% of time when present
- Phage (with cluster) where this start called: Rollins_43 (EB),

Summary by clusters:

There are 12 clusters represented in this pham: FP, singleton, AZ3, EH, EB, AZ1, AZ2, AZ, AZ4, AZ5, AZ6, AZ7,

Info for manual annotations of cluster AZ1:

- Start number 52 was manually annotated 44 times for cluster AZ1.
- Start number 55 was manually annotated 2 times for cluster AZ1.

Info for manual annotations of cluster AZ2:

- Start number 51 was manually annotated 3 times for cluster AZ2.

Info for manual annotations of cluster AZ3:

- Start number 28 was manually annotated 1 time for cluster AZ3.
- Start number 52 was manually annotated 1 time for cluster AZ3.

Info for manual annotations of cluster AZ4:

- Start number 32 was manually annotated 1 time for cluster AZ4.
- Start number 38 was manually annotated 2 times for cluster AZ4.
- Start number 47 was manually annotated 3 times for cluster AZ4.
- Start number 48 was manually annotated 4 times for cluster AZ4.

Info for manual annotations of cluster AZ5:

- Start number 45 was manually annotated 5 times for cluster AZ5.
- Start number 55 was manually annotated 11 times for cluster AZ5.

Info for manual annotations of cluster AZ6:

- Start number 51 was manually annotated 1 time for cluster AZ6.

Info for manual annotations of cluster EB:

- Start number 51 was manually annotated 1 time for cluster EB.
- Start number 53 was manually annotated 10 times for cluster EB.
- Start number 54 was manually annotated 1 time for cluster EB.
- Start number 55 was manually annotated 49 times for cluster EB.
- Start number 56 was manually annotated 19 times for cluster EB.
- Start number 57 was manually annotated 1 time for cluster EB.

Info for manual annotations of cluster EH:

- Start number 30 was manually annotated 1 time for cluster EH.
- Start number 48 was manually annotated 14 times for cluster EH.

Info for manual annotations of cluster FP:

- Start number 42 was manually annotated 1 time for cluster FP.

- Start number 50 was manually annotated 2 times for cluster FP.
- Start number 51 was manually annotated 3 times for cluster FP.

Gene Information:

Gene: AEgle_41 Start: 31604, Stop: 32437, Start Num: 44

Candidate Starts for AEgle_41:

(44, 31604), (Start: 52 @31616 has 45 MA's), (71, 31745), (76, 31778), (81, 31808), (127, 32036), (134, 32072), (179, 32240), (204, 32363), (211, 32411),

Gene: AGrandiflora_47 Start: 32890, Stop: 33708, Start Num: 52

Candidate Starts for AGrandiflora_47:

(Start: 52 @32890 has 45 MA's), (69, 33010), (71, 33019), (92, 33124), (93, 33127), (96, 33136), (116, 33244), (120, 33274), (134, 33352), (181, 33517), (204, 33634), (211, 33682),

Gene: Abigail_45 Start: 31658, Stop: 32443, Start Num: 56

Candidate Starts for Abigail_45:

(4, 31442), (Start: 51 @31646 has 8 MA's), (Start: 56 @31658 has 19 MA's), (58, 31682), (70, 31766), (78, 31811), (82, 31832), (103, 31919), (112, 31964), (114, 31970), (118, 31988), (134, 32081), (147, 32141), (149, 32147), (161, 32198), (169, 32210), (197, 32357), (207, 32390),

Gene: AceofSpades_49 Start: 34223, Stop: 35197, Start Num: 47

Candidate Starts for AceofSpades_49:

(Start: 38 @34193 has 2 MA's), (Start: 47 @34223 has 3 MA's), (49, 34229), (74, 34388), (76, 34400), (125, 34637), (137, 34712), (152, 34778), (161, 34814), (173, 34859), (191, 34970), (198, 35015), (203, 35024), (220, 35171),

Gene: AceofSpades_48 Start: 33235, Stop: 34047, Start Num: 48

Candidate Starts for AceofSpades_48:

(Start: 48 @33235 has 18 MA's), (63, 33319), (69, 33358), (89, 33457), (93, 33469), (104, 33529), (117, 33586), (134, 33697), (211, 34021),

Gene: Adolin_45 Start: 31088, Stop: 31897, Start Num: 52

Candidate Starts for Adolin_45:

(Start: 52 @31088 has 45 MA's), (71, 31217), (81, 31280), (134, 31544), (179, 31700), (193, 31790), (211, 31871),

Gene: Adumb2043_42 Start: 31635, Stop: 32456, Start Num: 52

Candidate Starts for Adumb2043_42:

(44, 31623), (Start: 52 @31635 has 45 MA's), (71, 31764), (76, 31797), (81, 31827), (127, 32055), (134, 32091), (179, 32259), (204, 32382), (211, 32430),

Gene: AinMach_46 Start: 32886, Stop: 33686, Start Num: 51

Candidate Starts for AinMach_46:

(Start: 51 @32886 has 8 MA's), (66, 32982), (76, 33051), (93, 33126), (96, 33135), (102, 33168), (118, 33249), (134, 33342), (196, 33594), (199, 33603), (211, 33660), (213, 33672),

Gene: Akino08_46 Start: 33884, Stop: 34603, Start Num: 56

Candidate Starts for Akino08_46:

(4, 33668), (Start: 51 @33872 has 8 MA's), (Start: 56 @33884 has 19 MA's), (58, 33908), (72, 33998), (80, 34049), (82, 34058), (92, 34097), (101, 34133), (112, 34190), (114, 34196), (134, 34307), (149,

34373), (153, 34391), (169, 34436), (177, 34466), (190, 34544), (197, 34583), (200, 34592),

Gene: Albedo_46 Start: 32261, Stop: 32983, Start Num: 55

Candidate Starts for Albedo_46:

(4, 32045), (Start: 51 @32249 has 8 MA's), (Start: 55 @32261 has 62 MA's), (80, 32426), (82, 32435), (92, 32474), (103, 32522), (104, 32537), (109, 32561), (114, 32573), (133, 32678), (134, 32684), (149, 32750), (190, 32924), (197, 32963),

Gene: Albright_43 Start: 31191, Stop: 31910, Start Num: 55

Candidate Starts for Albright_43:

(Start: 51 @31179 has 8 MA's), (Start: 55 @31191 has 62 MA's), (101, 31440), (104, 31467), (114, 31503), (130, 31596), (133, 31608), (134, 31614), (149, 31680), (156, 31704), (186, 31836), (187, 31839), (197, 31890),

Gene: Amploria_43 Start: 31806, Stop: 32639, Start Num: 44

Candidate Starts for Amploria_43:

(44, 31806), (Start: 52 @31818 has 45 MA's), (71, 31947), (76, 31980), (81, 32010), (127, 32238), (134, 32274), (179, 32442), (204, 32565), (211, 32613),

Gene: Amyev_44 Start: 33180, Stop: 33998, Start Num: 52

Candidate Starts for Amyev_44:

(18, 33087), (23, 33102), (24, 33105), (Start: 42 @33171 has 1 MA's), (Start: 52 @33180 has 45 MA's), (71, 33309), (98, 33441), (134, 33642), (183, 33831), (188, 33861), (211, 33972),

Gene: AnnaLie_46 Start: 32269, Stop: 33054, Start Num: 56

Candidate Starts for AnnaLie_46:

(4, 32053), (Start: 51 @32257 has 8 MA's), (Start: 56 @32269 has 19 MA's), (58, 32293), (78, 32422), (82, 32443), (103, 32530), (112, 32575), (114, 32581), (130, 32674), (134, 32692), (147, 32752), (149, 32758), (161, 32809), (169, 32821), (190, 32929), (197, 32968), (207, 33001),

Gene: Armstrong_43 Start: 29796, Stop: 30521, Start Num: 53

Candidate Starts for Armstrong_43:

(3, 29571), (Start: 53 @29796 has 10 MA's), (Start: 57 @29814 has 1 MA's), (80, 29961), (82, 29970), (85, 29985), (92, 30009), (109, 30096), (114, 30108), (118, 30126), (133, 30213), (134, 30219), (144, 30264), (149, 30285), (153, 30303), (197, 30495), (203, 30510),

Gene: Arroyo_46 Start: 32377, Stop: 33162, Start Num: 56

Candidate Starts for Arroyo_46:

(4, 32161), (Start: 51 @32365 has 8 MA's), (Start: 56 @32377 has 19 MA's), (58, 32401), (78, 32530), (82, 32551), (103, 32638), (112, 32683), (114, 32689), (134, 32800), (147, 32860), (149, 32866), (161, 32917), (169, 32929), (197, 33076), (207, 33109),

Gene: Asa16_42 Start: 32994, Stop: 33812, Start Num: 52

Candidate Starts for Asa16_42:

(41, 32982), (Start: 52 @32994 has 45 MA's), (71, 33123), (134, 33456), (143, 33501), (145, 33510), (183, 33645), (188, 33675), (211, 33786),

Gene: Ascela_44 Start: 32212, Stop: 33024, Start Num: 52

Candidate Starts for Ascela_44:

(Start: 52 @32212 has 45 MA's), (62, 32287), (71, 32341), (86, 32431), (134, 32677), (136, 32695), (143, 32722), (161, 32764), (204, 32950), (211, 32998),

Gene: Ashes_41 Start: 30453, Stop: 31253, Start Num: 55

Candidate Starts for Ashes_41:

(19, 30351), (Start: 45 @30435 has 5 MA's), (Start: 55 @30453 has 62 MA's), (90, 30675), (107, 30756), (134, 30900), (136, 30918), (175, 31035), (178, 31047), (211, 31227), (213, 31239),

Gene: AvGardian_47 Start: 32285, Stop: 33004, Start Num: 55

Candidate Starts for AvGardian_47:

(4, 32069), (Start: 51 @32273 has 8 MA's), (Start: 55 @32285 has 62 MA's), (59, 32318), (75, 32426), (78, 32438), (82, 32459), (92, 32498), (109, 32585), (114, 32597), (118, 32615), (133, 32702), (134, 32708), (149, 32774), (153, 32792), (169, 32837), (171, 32843), (178, 32870), (188, 32936), (197, 32984),

Gene: Avocadoman_44 Start: 31398, Stop: 32117, Start Num: 55

Candidate Starts for Avocadoman_44:

(4, 31182), (Start: 51 @31386 has 8 MA's), (Start: 55 @31398 has 62 MA's), (101, 31647), (104, 31674), (114, 31710), (133, 31815), (134, 31821), (149, 31887), (156, 31911), (186, 32043), (187, 32046), (197, 32097),

Gene: AylexOG_47 Start: 32343, Stop: 33128, Start Num: 56

Candidate Starts for AylexOG_47:

(4, 32127), (Start: 51 @32331 has 8 MA's), (Start: 56 @32343 has 19 MA's), (58, 32367), (80, 32508), (82, 32517), (92, 32556), (112, 32649), (114, 32655), (134, 32766), (149, 32832), (153, 32850), (169, 32895), (177, 32925), (190, 33003), (197, 33042), (207, 33075),

Gene: BAjuniper_46 Start: 33187, Stop: 33909, Start Num: 55

Candidate Starts for BAjuniper_46:

(4, 32971), (Start: 51 @33175 has 8 MA's), (Start: 55 @33187 has 62 MA's), (78, 33340), (85, 33376), (92, 33400), (94, 33406), (96, 33412), (107, 33475), (114, 33499), (118, 33517), (133, 33604), (134, 33610), (149, 33676), (153, 33694), (197, 33886),

Gene: BabyDaisy_45 Start: 32232, Stop: 32951, Start Num: 55

Candidate Starts for BabyDaisy_45:

(4, 32016), (Start: 51 @32220 has 8 MA's), (Start: 55 @32232 has 62 MA's), (58, 32256), (82, 32406), (109, 32532), (114, 32544), (118, 32562), (120, 32577), (133, 32649), (134, 32655), (153, 32739), (162, 32778), (184, 32865), (190, 32892), (192, 32898), (197, 32931),

Gene: BabyYoda_46 Start: 33001, Stop: 33720, Start Num: 56

Candidate Starts for BabyYoda_46:

(4, 32785), (Start: 51 @32989 has 8 MA's), (Start: 56 @33001 has 19 MA's), (58, 33025), (80, 33166), (82, 33175), (92, 33214), (101, 33250), (112, 33307), (114, 33313), (134, 33424), (149, 33490), (153, 33508), (169, 33553), (177, 33583), (190, 33661), (197, 33700),

Gene: Bachaco_43 Start: 32963, Stop: 33685, Start Num: 55

Candidate Starts for Bachaco_43:

(Start: 51 @32951 has 8 MA's), (Start: 55 @32963 has 62 MA's), (59, 32996), (78, 33116), (80, 33128), (82, 33137), (104, 33239), (109, 33263), (114, 33275), (133, 33380), (134, 33386), (149, 33452), (184, 33596), (192, 33629), (197, 33662),

Gene: BaileyBlu_44 Start: 31818, Stop: 32633, Start Num: 51

Candidate Starts for BaileyBlu_44:

(Start: 51 @31818 has 8 MA's), (64, 31905), (69, 31941), (76, 31983), (88, 32040), (89, 32046), (111, 32154), (125, 32220), (184, 32475), (201, 32553), (211, 32607),

Gene: Barnstormer_49 Start: 33593, Stop: 34432, Start Num: 48

Candidate Starts for Barnstormer_49:

(2, 33335), (6, 33410), (26, 33524), (Start: 48 @33593 has 18 MA's), (134, 34025), (146, 34076), (148, 34085), (153, 34109), (211, 34382), (214, 34421),

Gene: Beaupre_40 Start: 30263, Stop: 31063, Start Num: 55

Candidate Starts for Beaupre_40:

(19, 30161), (Start: 45 @30245 has 5 MA's), (Start: 55 @30263 has 62 MA's), (90, 30485), (107, 30566), (134, 30710), (136, 30728), (175, 30845), (178, 30857), (211, 31037), (213, 31049),

Gene: BelmontSKP_46 Start: 32269, Stop: 33054, Start Num: 56

Candidate Starts for BelmontSKP_46:

(4, 32053), (Start: 51 @32257 has 8 MA's), (Start: 56 @32269 has 19 MA's), (58, 32293), (78, 32422), (82, 32443), (103, 32530), (112, 32575), (114, 32581), (130, 32674), (134, 32692), (147, 32752), (149, 32758), (161, 32809), (169, 32821), (190, 32929), (197, 32968), (207, 33001),

Gene: Bengal_46 Start: 31922, Stop: 32707, Start Num: 56

Candidate Starts for Bengal_46:

(4, 31706), (Start: 51 @31910 has 8 MA's), (Start: 56 @31922 has 19 MA's), (58, 31946), (70, 32030), (78, 32075), (82, 32096), (103, 32183), (112, 32228), (114, 32234), (118, 32252), (134, 32345), (147, 32405), (149, 32411), (161, 32462), (169, 32474), (197, 32621), (207, 32654),

Gene: Bernstein_43 Start: 29878, Stop: 30603, Start Num: 53

Candidate Starts for Bernstein_43:

(3, 29653), (5, 29680), (Start: 53 @29878 has 10 MA's), (Start: 57 @29896 has 1 MA's), (80, 30043), (82, 30052), (85, 30067), (92, 30091), (109, 30178), (114, 30190), (118, 30208), (133, 30295), (134, 30301), (144, 30346), (149, 30367), (153, 30385), (197, 30577), (203, 30592),

Gene: Berrie_46 Start: 33402, Stop: 34193, Start Num: 52

Candidate Starts for Berrie_46:

(Start: 52 @33402 has 45 MA's), (71, 33531), (75, 33561), (109, 33720), (134, 33849), (184, 34032), (204, 34119), (211, 34167),

Gene: Brahms_43 Start: 29798, Stop: 30523, Start Num: 53

Candidate Starts for Brahms_43:

(3, 29573), (5, 29600), (Start: 53 @29798 has 10 MA's), (Start: 57 @29816 has 1 MA's), (80, 29963), (82, 29972), (85, 29987), (92, 30011), (109, 30098), (114, 30110), (118, 30128), (133, 30215), (134, 30221), (144, 30266), (149, 30287), (153, 30305), (197, 30497), (203, 30512),

Gene: BubbaBear_44 Start: 31851, Stop: 32570, Start Num: 55

Candidate Starts for BubbaBear_44:

(Start: 51 @31839 has 8 MA's), (Start: 55 @31851 has 62 MA's), (101, 32100), (104, 32127), (114, 32163), (130, 32256), (133, 32268), (134, 32274), (149, 32340), (156, 32364), (186, 32496), (187, 32499), (197, 32550),

Gene: Buldak_42 Start: 30417, Stop: 31178, Start Num: 51

Candidate Starts for Buldak_42:

(4, 30204), (46, 30408), (Start: 51 @30417 has 8 MA's), (Start: 54 @30423 has 1 MA's), (Start: 55 @30429 has 62 MA's), (82, 30615), (107, 30729), (110, 30744), (119, 30783), (120, 30786), (134, 30864), (149, 30930), (177, 31026), (178, 31029), (197, 31146),

Gene: Burritobowl_45 Start: 31852, Stop: 32571, Start Num: 55

Candidate Starts for Burritobowl_45:

(4, 31636), (Start: 51 @31840 has 8 MA's), (Start: 55 @31852 has 62 MA's), (68, 31951), (75, 31993), (82, 32026), (92, 32065), (114, 32164), (120, 32197), (133, 32269), (134, 32275), (147, 32335), (149, 32341), (190, 32512), (197, 32551),

Gene: CallinAllBarbz_44 Start: 32005, Stop: 32820, Start Num: 51

Candidate Starts for CallinAllBarbz_44:

(Start: 51 @32005 has 8 MA's), (64, 32092), (69, 32128), (76, 32170), (89, 32233), (111, 32341), (118, 32371), (125, 32407), (184, 32662), (201, 32740), (211, 32794),

Gene: CanFranMach_47 Start: 32308, Stop: 33030, Start Num: 55

Candidate Starts for CanFranMach_47:

(4, 32092), (Start: 51 @32296 has 8 MA's), (Start: 55 @32308 has 62 MA's), (75, 32449), (82, 32482), (92, 32521), (114, 32620), (133, 32725), (134, 32731), (147, 32791), (153, 32815), (160, 32845), (177, 32890), (190, 32968), (197, 33007),

Gene: Cappuccino_41 Start: 30322, Stop: 31122, Start Num: 55

Candidate Starts for Cappuccino_41:

(Start: 45 @30304 has 5 MA's), (Start: 55 @30322 has 62 MA's), (90, 30544), (107, 30625), (134, 30769), (136, 30787), (175, 30904), (193, 31015), (206, 31063), (211, 31096), (213, 31108),

Gene: Caron_52 Start: 34597, Stop: 35439, Start Num: 48

Candidate Starts for Caron_52:

(34, 34555), (Start: 48 @34597 has 18 MA's), (83, 34789), (115, 34924), (134, 35029), (158, 35134), (167, 35170), (169, 35176), (211, 35392), (214, 35428),

Gene: Cashington_43 Start: 31231, Stop: 31950, Start Num: 55

Candidate Starts for Cashington_43:

(Start: 51 @31219 has 8 MA's), (Start: 55 @31231 has 62 MA's), (101, 31480), (104, 31507), (114, 31543), (130, 31636), (133, 31648), (134, 31654), (149, 31720), (156, 31744), (186, 31876), (187, 31879), (197, 31930),

Gene: Cassia_44 Start: 32176, Stop: 32967, Start Num: 52

Candidate Starts for Cassia_44:

(Start: 52 @32176 has 45 MA's), (71, 32305), (109, 32494), (134, 32623), (166, 32719), (181, 32776), (204, 32893), (211, 32941),

Gene: Celaena_43 Start: 32705, Stop: 33427, Start Num: 55

Candidate Starts for Celaena_43:

(Start: 51 @32693 has 8 MA's), (Start: 55 @32705 has 62 MA's), (59, 32738), (78, 32858), (80, 32870), (82, 32879), (114, 33017), (133, 33122), (134, 33128), (192, 33371), (197, 33404),

Gene: Cen1621_46 Start: 32188, Stop: 32991, Start Num: 48

Candidate Starts for Cen1621_46:

(31, 32140), (35, 32149), (Start: 48 @32188 has 18 MA's), (122, 32566), (133, 32626), (134, 32632), (135, 32644), (180, 32785), (204, 32908), (206, 32923), (211, 32956),

Gene: ChiliPepper_43 Start: 32335, Stop: 33057, Start Num: 55

Candidate Starts for ChiliPepper_43:

(4, 32119), (Start: 51 @32323 has 8 MA's), (Start: 55 @32335 has 62 MA's), (58, 32359), (75, 32476), (78, 32488), (80, 32500), (103, 32596), (105, 32614), (109, 32635), (114, 32647), (134, 32758), (149, 32824), (153, 32842), (169, 32887), (178, 32920), (192, 33001), (197, 33034),

Gene: Clayda5_44 Start: 29785, Stop: 30510, Start Num: 53

Candidate Starts for Clayda5_44:

(3, 29560), (5, 29587), (Start: 53 @29785 has 10 MA's), (Start: 57 @29803 has 1 MA's), (80, 29950), (82, 29959), (85, 29974), (92, 29998), (109, 30085), (114, 30097), (118, 30115), (133, 30202), (134, 30208), (144, 30253), (149, 30274), (153, 30292), (197, 30484), (203, 30499),

Gene: CliffHanger_47 Start: 31124, Stop: 31864, Start Num: 55

Candidate Starts for CliffHanger_47:

(Start: 55 @31124 has 62 MA's), (65, 31193), (82, 31307), (94, 31352), (97, 31364), (114, 31445), (118, 31463), (133, 31550), (134, 31556), (184, 31766), (197, 31832),

Gene: Coltrane_43 Start: 29798, Stop: 30523, Start Num: 53

Candidate Starts for Coltrane_43:

(3, 29573), (5, 29600), (Start: 53 @29798 has 10 MA's), (Start: 57 @29816 has 1 MA's), (80, 29963), (82, 29972), (85, 29987), (92, 30011), (109, 30098), (114, 30110), (118, 30128), (133, 30215), (134, 30221), (144, 30266), (149, 30287), (153, 30305), (197, 30497), (203, 30512),

Gene: Community_47 Start: 34215, Stop: 35021, Start Num: 52

Candidate Starts for Community_47:

(Start: 52 @34215 has 45 MA's), (71, 34344), (96, 34467), (134, 34674), (170, 34785), (204, 34947), (211, 34995),

Gene: Crewmate_50 Start: 32863, Stop: 33654, Start Num: 52

Candidate Starts for Crewmate_50:

(Start: 52 @32863 has 45 MA's), (109, 33181), (134, 33310), (193, 33547), (204, 33580), (211, 33628),

Gene: CroZenni_45 Start: 31772, Stop: 32557, Start Num: 56

Candidate Starts for CroZenni_45:

(4, 31556), (Start: 51 @31760 has 8 MA's), (Start: 56 @31772 has 19 MA's), (58, 31796), (70, 31880), (78, 31925), (82, 31946), (103, 32033), (112, 32078), (114, 32084), (118, 32102), (134, 32195), (147, 32255), (149, 32261), (161, 32312), (169, 32324), (197, 32471), (207, 32504),

Gene: CupcakePrincess_46 Start: 31958, Stop: 32680, Start Num: 55

Candidate Starts for CupcakePrincess_46:

(4, 31742), (Start: 51 @31946 has 8 MA's), (Start: 55 @31958 has 62 MA's), (58, 31982), (78, 32111), (82, 32132), (114, 32270), (133, 32375), (134, 32381), (149, 32447), (153, 32465), (197, 32657),

Gene: Cyan_45 Start: 32495, Stop: 33307, Start Num: 52

Candidate Starts for Cyan_45:

(Start: 52 @32495 has 45 MA's), (62, 32570), (71, 32624), (83, 32699), (86, 32714), (91, 32738), (134, 32960), (136, 32978), (161, 33047), (181, 33116), (204, 33233), (211, 33281),

Gene: DickRichards_44 Start: 32211, Stop: 32930, Start Num: 55

Candidate Starts for DickRichards_44:

(Start: 51 @32199 has 8 MA's), (Start: 55 @32211 has 62 MA's), (101, 32460), (114, 32523), (130, 32616), (133, 32628), (134, 32634), (149, 32700), (156, 32724), (186, 32856), (187, 32859), (197, 32910),

Gene: Didgeridoo_48 Start: 32578, Stop: 33297, Start Num: 55

Candidate Starts for Didgeridoo_48:

(Start: 51 @32566 has 8 MA's), (Start: 55 @32578 has 62 MA's), (58, 32602), (82, 32752), (109, 32878), (114, 32890), (118, 32908), (120, 32923), (133, 32995), (134, 33001), (153, 33085), (184, 33211), (190, 33238), (192, 33244), (197, 33277),

Gene: DirtyBubble_45 Start: 32669, Stop: 33388, Start Num: 56

Candidate Starts for DirtyBubble_45:

(Start: 51 @32657 has 8 MA's), (Start: 56 @32669 has 19 MA's), (58, 32693), (72, 32783), (78, 32822), (80, 32834), (82, 32843), (92, 32882), (101, 32918), (112, 32975), (114, 32981), (128, 33059), (134, 33092), (144, 33137), (149, 33158), (153, 33176), (169, 33221), (177, 33251), (190, 33329), (197, 33368),

Gene: Dismas_43 Start: 32288, Stop: 33010, Start Num: 55

Candidate Starts for Dismas_43:

(4, 32072), (Start: 51 @32276 has 8 MA's), (Start: 55 @32288 has 62 MA's), (58, 32312), (75, 32429), (78, 32441), (80, 32453), (103, 32549), (105, 32567), (109, 32588), (114, 32600), (134, 32711), (149, 32777), (153, 32795), (169, 32840), (178, 32873), (192, 32954), (197, 32987),

Gene: Donkey_41 Start: 30294, Stop: 31112, Start Num: 45

Candidate Starts for Donkey_41:

(Start: 45 @30294 has 5 MA's), (Start: 55 @30312 has 62 MA's), (90, 30534), (107, 30615), (134, 30759), (136, 30777), (175, 30894), (193, 31005), (206, 31053), (211, 31086), (213, 31098),

Gene: Doobus_44 Start: 31595, Stop: 32314, Start Num: 55

Candidate Starts for Doobus_44:

(4, 31379), (Start: 51 @31583 has 8 MA's), (Start: 55 @31595 has 62 MA's), (101, 31844), (104, 31871), (114, 31907), (130, 32000), (133, 32012), (134, 32018), (149, 32084), (156, 32108), (186, 32240), (187, 32243), (197, 32294),

Gene: DrManhattan_44 Start: 30654, Stop: 31463, Start Num: 52

Candidate Starts for DrManhattan_44:

(Start: 52 @30654 has 45 MA's), (71, 30783), (81, 30846), (134, 31110), (179, 31266), (193, 31356), (211, 31437),

Gene: DrSierra_42 Start: 30494, Stop: 31300, Start Num: 52

Candidate Starts for DrSierra_42:

(8, 30329), (10, 30344), (11, 30350), (Start: 52 @30494 has 45 MA's), (69, 30614), (71, 30623), (91, 30731), (96, 30746), (98, 30755), (129, 30929), (134, 30953), (170, 31064), (204, 31226), (211, 31274),

Gene: Eden_43 Start: 30525, Stop: 31250, Start Num: 53

Candidate Starts for Eden_43:

(Start: 53 @30525 has 10 MA's), (82, 30699), (109, 30825), (114, 30837), (118, 30855), (134, 30948), (138, 30969), (149, 31014), (153, 31032), (169, 31077), (185, 31164), (192, 31191), (197, 31224), (205, 31242),

Gene: Elezi_42 Start: 32991, Stop: 33809, Start Num: 52

Candidate Starts for Elezi_42:

(41, 32979), (Start: 52 @32991 has 45 MA's), (71, 33120), (134, 33453), (143, 33498), (145, 33507), (183, 33642), (188, 33672), (211, 33783),

Gene: Elfy_45 Start: 31645, Stop: 32472, Start Num: 42

Candidate Starts for Elfy_45:

(7, 31471), (33, 31612), (Start: 42 @31645 has 1 MA's), (74, 31810), (92, 31906), (95, 31915), (108, 31984), (116, 32020), (118, 32035), (120, 32050), (134, 32128), (138, 32149), (163, 32218), (179, 32278), (181, 32284), (183, 32305), (192, 32350), (209, 32422), (211, 32446), (213, 32458),

Gene: Elva_47 Start: 32903, Stop: 33622, Start Num: 56

Candidate Starts for Elva_47:

(Start: 51 @32888 has 8 MA's), (Start: 56 @32903 has 19 MA's), (58, 32927), (59, 32936), (75, 33044), (80, 33068), (82, 33077), (101, 33152), (112, 33209), (114, 33215), (134, 33326), (151, 33401), (153, 33410), (169, 33455), (184, 33536), (190, 33563), (197, 33602), (200, 33611),

Gene: Emotion_49 Start: 33922, Stop: 34743, Start Num: 48

Candidate Starts for Emotion_49:

(9, 33766), (39, 33901), (Start: 48 @33922 has 18 MA's), (89, 34159), (108, 34246), (121, 34318), (134, 34393), (145, 34447), (166, 34495), (211, 34717),

Gene: Emotion_50 Start: 34867, Stop: 35778, Start Num: 38

Candidate Starts for Emotion_50:

(Start: 38 @34867 has 2 MA's), (Start: 47 @34897 has 3 MA's), (49, 34903), (71, 35038), (77, 35077), (125, 35341), (134, 35398), (165, 35542), (172, 35563), (173, 35566), (182, 35611), (185, 35647), (203, 35728), (208, 35752),

Gene: Eraser_42 Start: 33001, Stop: 33819, Start Num: 52

Candidate Starts for Eraser_42:

(41, 32989), (Start: 52 @33001 has 45 MA's), (71, 33130), (134, 33463), (143, 33508), (145, 33517), (183, 33652), (188, 33682), (211, 33793),

Gene: Eula_46 Start: 31944, Stop: 32666, Start Num: 55

Candidate Starts for Eula_46:

(4, 31728), (Start: 51 @31932 has 8 MA's), (Start: 55 @31944 has 62 MA's), (58, 31968), (78, 32097), (82, 32118), (94, 32163), (114, 32256), (133, 32361), (134, 32367), (149, 32433), (153, 32451), (197, 32643),

Gene: Exile_39 Start: 33484, Stop: 34293, Start Num: 51

Candidate Starts for Exile_39:

(Start: 51 @33484 has 8 MA's), (116, 33844), (123, 33886), (134, 33949), (136, 33967), (139, 33973), (184, 34135), (201, 34213), (211, 34267),

Gene: Finalfrontier_46 Start: 32803, Stop: 33522, Start Num: 55

Candidate Starts for Finalfrontier_46:

(4, 32587), (Start: 51 @32791 has 8 MA's), (Start: 55 @32803 has 62 MA's), (58, 32827), (78, 32956), (82, 32977), (114, 33115), (133, 33220), (134, 33226), (149, 33292), (153, 33310), (190, 33463), (197, 33502),

Gene: FiveHead_52 Start: 33199, Stop: 34014, Start Num: 48

Candidate Starts for FiveHead_52:

(Start: 48 @33199 has 18 MA's), (69, 33322), (89, 33421), (93, 33433), (117, 33550), (128, 33616), (134, 33661), (167, 33769), (211, 33988),

Gene: FiveHead_53 Start: 34190, Stop: 35167, Start Num: 47

Candidate Starts for FiveHead_53:

(16, 34094), (Start: 47 @34190 has 3 MA's), (49, 34196), (74, 34355), (76, 34367), (125, 34604), (137, 34679), (152, 34745), (161, 34781), (173, 34826), (191, 34940), (198, 34985), (203, 34994), (215, 35087), (220, 35141),

Gene: FlameThrower_43 Start: 32154, Stop: 32876, Start Num: 55

Candidate Starts for FlameThrower_43:

(Start: 51 @32142 has 8 MA's), (Start: 55 @32154 has 62 MA's), (59, 32187), (78, 32307), (80, 32319), (82, 32328), (114, 32466), (133, 32571), (134, 32577), (192, 32820), (197, 32853),

Gene: Floop_51 Start: 34481, Stop: 35374, Start Num: 48

Candidate Starts for Floop_51:

(29, 34421), (Start: 48 @34481 has 18 MA's), (96, 34733), (131, 34916), (134, 34928), (166, 35072), (183, 35153), (212, 35303), (216, 35342), (217, 35351), (218, 35357),

Gene: Flutur_44 Start: 32752, Stop: 33564, Start Num: 52

Candidate Starts for Flutur_44:

(Start: 52 @32752 has 45 MA's), (62, 32827), (71, 32881), (83, 32956), (86, 32971), (91, 32995), (134, 33217), (136, 33235), (161, 33304), (181, 33373), (204, 33490), (211, 33538),

Gene: Forester_49 Start: 35414, Stop: 36301, Start Num: 48

Candidate Starts for Forester_49:

(25, 35342), (Start: 48 @35414 has 18 MA's), (91, 35651), (96, 35666), (103, 35702), (131, 35849), (134, 35861), (166, 35996), (183, 36074), (186, 36095), (212, 36224), (217, 36272),

Gene: Franklin22_44 Start: 30400, Stop: 31122, Start Num: 53

Candidate Starts for Franklin22_44:

(Start: 53 @30400 has 10 MA's), (68, 30499), (82, 30574), (85, 30589), (92, 30613), (100, 30640), (109, 30700), (114, 30712), (124, 30763), (134, 30823), (138, 30844), (149, 30889), (153, 30907), (197, 31099),

Gene: Gack_43 Start: 30444, Stop: 31169, Start Num: 53

Candidate Starts for Gack_43:

(Start: 53 @30444 has 10 MA's), (Start: 57 @30462 has 1 MA's), (65, 30513), (82, 30618), (85, 30633), (105, 30723), (114, 30756), (124, 30807), (134, 30867), (149, 30933), (153, 30951), (197, 31143),

Gene: Gambol_42 Start: 30331, Stop: 31131, Start Num: 55

Candidate Starts for Gambol_42:

(Start: 45 @30313 has 5 MA's), (Start: 55 @30331 has 62 MA's), (90, 30553), (107, 30634), (134, 30778), (136, 30796), (175, 30913), (193, 31024), (206, 31072), (211, 31105), (213, 31117),

Gene: GardenState_50 Start: 33862, Stop: 34695, Start Num: 48

Candidate Starts for GardenState_50:

(Start: 48 @33862 has 18 MA's), (134, 34300), (169, 34435), (211, 34651),

Gene: Giorgio_40 Start: 30246, Stop: 31046, Start Num: 55

Candidate Starts for Giorgio_40:

(19, 30144), (Start: 45 @30228 has 5 MA's), (Start: 55 @30246 has 62 MA's), (90, 30468), (107, 30549), (134, 30693), (136, 30711), (175, 30828), (178, 30840), (211, 31020), (213, 31032),

Gene: Gretchen_50 Start: 35099, Stop: 35974, Start Num: 48

Candidate Starts for Gretchen_50:

(25, 35027), (Start: 48 @35099 has 18 MA's), (91, 35336), (96, 35351), (103, 35387), (131, 35534), (134, 35546), (147, 35606), (148, 35609), (154, 35627), (183, 35747), (186, 35768), (212, 35897), (217, 35945), (219, 35957),

Gene: GrimEater_40 Start: 30496, Stop: 31314, Start Num: 50

Candidate Starts for GrimEater_40:

(Start: 50 @30496 has 2 MA's), (71, 30631), (88, 30721), (89, 30727), (108, 30814), (125, 30901), (134, 30958), (201, 31234), (211, 31288),

Gene: Gumpizza_40 Start: 30202, Stop: 31002, Start Num: 55

Candidate Starts for Gumpizza_40:

(19, 30100), (Start: 45 @30184 has 5 MA's), (Start: 55 @30202 has 62 MA's), (90, 30424), (107, 30505), (134, 30649), (136, 30667), (175, 30784), (178, 30796), (211, 30976), (213, 30988),

Gene: Halsey_41 Start: 30440, Stop: 31258, Start Num: 45

Candidate Starts for Halsey_41:

(19, 30356), (Start: 45 @30440 has 5 MA's), (Start: 55 @30458 has 62 MA's), (90, 30680), (107, 30761), (134, 30905), (136, 30923), (175, 31040), (178, 31052), (193, 31151), (211, 31232), (213, 31244),

Gene: Honk_46 Start: 30645, Stop: 31490, Start Num: 48

Candidate Starts for Honk_46:

(27, 30585), (Start: 48 @30645 has 18 MA's), (84, 30843), (88, 30858), (98, 30894), (169, 31206), (180, 31257), (193, 31347), (211, 31428),

Gene: IAmGroot_50 Start: 34329, Stop: 35162, Start Num: 48

Candidate Starts for IAmGroot_50:

(Start: 48 @34329 has 18 MA's), (134, 34767), (169, 34902), (211, 35118),

Gene: IUFootball_45 Start: 33847, Stop: 34644, Start Num: 51

Candidate Starts for IUFootball_45:

(Start: 51 @33847 has 8 MA's), (59, 33889), (69, 33967), (98, 34096), (99, 34099), (118, 34201), (134, 34294), (186, 34498), (211, 34618), (213, 34630),

Gene: Icarian_49 Start: 33677, Stop: 34396, Start Num: 56

Candidate Starts for Icarian_49:

(36, 33626), (Start: 56 @33677 has 19 MA's), (58, 33701), (72, 33791), (80, 33842), (82, 33851), (92, 33890), (101, 33926), (112, 33983), (114, 33989), (134, 34100), (144, 34145), (149, 34166), (153, 34184), (169, 34229), (171, 34235), (177, 34259), (190, 34337), (197, 34376),

Gene: IndyLu_45 Start: 32178, Stop: 32897, Start Num: 55

Candidate Starts for IndyLu_45:

(Start: 51 @32166 has 8 MA's), (Start: 55 @32178 has 62 MA's), (58, 32202), (82, 32352), (109, 32478), (114, 32490), (118, 32508), (120, 32523), (133, 32595), (134, 32601), (162, 32724), (190, 32838), (192, 32844), (197, 32877), (202, 32889),

Gene: Iter_44 Start: 32207, Stop: 33019, Start Num: 52

Candidate Starts for Iter_44:

(Start: 52 @32207 has 45 MA's), (62, 32282), (71, 32336), (86, 32426), (134, 32672), (136, 32690), (143, 32717), (161, 32759), (204, 32945), (211, 32993),

Gene: IttyBittyPiggy_45 Start: 31970, Stop: 32758, Start Num: 52

Candidate Starts for IttyBittyPiggy_45:

(21, 31886), (Start: 52 @31970 has 45 MA's), (71, 32099), (109, 32288), (134, 32417), (204, 32684), (211, 32732),

Gene: Jabb_46 Start: 31958, Stop: 32680, Start Num: 55

Candidate Starts for Jabb_46:

(4, 31742), (Start: 51 @31946 has 8 MA's), (Start: 55 @31958 has 62 MA's), (58, 31982), (78, 32111), (82, 32132), (114, 32270), (133, 32375), (134, 32381), (149, 32447), (153, 32465), (197, 32657),

Gene: Janeemi_47 Start: 34214, Stop: 35026, Start Num: 52

Candidate Starts for Janeemi_47:

(Start: 52 @34214 has 45 MA's), (69, 34334), (71, 34343), (75, 34373), (109, 34532), (134, 34661), (167, 34781), (204, 34952), (211, 35000),

Gene: Jankie_41 Start: 30673, Stop: 31491, Start Num: 50

Candidate Starts for Jankie_41:

(Start: 50 @30673 has 2 MA's), (71, 30808), (88, 30898), (89, 30904), (108, 30991), (125, 31078), (134, 31135), (201, 31411), (211, 31465), (213, 31477),

Gene: JasmineDragon_49 Start: 33132, Stop: 33989, Start Num: 32

Candidate Starts for JasmineDragon_49:

(Start: 32 @33132 has 1 MA's), (43, 33168), (Start: 48 @33177 has 18 MA's), (69, 33300), (89, 33399), (117, 33528), (134, 33639), (201, 33909), (211, 33963),

Gene: JasmineDragon_50 Start: 34166, Stop: 35137, Start Num: 47

Candidate Starts for JasmineDragon_50:

(Start: 38 @34136 has 2 MA's), (Start: 47 @34166 has 3 MA's), (49, 34172), (74, 34328), (76, 34340), (125, 34577), (137, 34652), (152, 34718), (161, 34754), (164, 34772), (173, 34799), (191, 34910), (198, 34955), (203, 34964), (220, 35111),

Gene: Joemato_45 Start: 32522, Stop: 33334, Start Num: 52

Candidate Starts for Joemato_45:

(Start: 52 @32522 has 45 MA's), (62, 32597), (71, 32651), (83, 32726), (86, 32741), (91, 32765), (134, 32987), (136, 33005), (161, 33074), (181, 33143), (204, 33260), (211, 33308),

Gene: JohnDoe_45 Start: 32518, Stop: 33330, Start Num: 52

Candidate Starts for JohnDoe_45:

(Start: 52 @32518 has 45 MA's), (62, 32593), (71, 32647), (83, 32722), (86, 32737), (91, 32761), (134, 32983), (136, 33001), (161, 33070), (181, 33139), (204, 33256), (211, 33304),

Gene: JohnThicc_52 Start: 34190, Stop: 35167, Start Num: 47

Candidate Starts for JohnThicc_52:

(16, 34094), (Start: 47 @34190 has 3 MA's), (49, 34196), (74, 34355), (76, 34367), (125, 34604), (137, 34679), (152, 34745), (161, 34781), (173, 34826), (191, 34940), (198, 34985), (203, 34994), (215, 35087), (220, 35141),

Gene: JohnThicc_51 Start: 33199, Stop: 34014, Start Num: 48

Candidate Starts for JohnThicc_51:

(Start: 48 @33199 has 18 MA's), (69, 33322), (89, 33421), (93, 33433), (117, 33550), (128, 33616), (134, 33661), (167, 33769), (211, 33988),

Gene: Johnathan_44 Start: 31234, Stop: 31953, Start Num: 55

Candidate Starts for Johnathan_44:

(Start: 51 @31222 has 8 MA's), (Start: 55 @31234 has 62 MA's), (75, 31375), (78, 31387), (82, 31408), (109, 31534), (114, 31546), (130, 31639), (133, 31651), (134, 31657), (141, 31693), (147, 31717), (149, 31723), (153, 31741), (190, 31894), (197, 31933),

Gene: Jovita_46 Start: 31973, Stop: 32692, Start Num: 55

Candidate Starts for Jovita_46:

(Start: 51 @31961 has 8 MA's), (Start: 55 @31973 has 62 MA's), (58, 31997), (75, 32114), (78, 32126), (82, 32147), (114, 32285), (133, 32390), (134, 32396), (149, 32462), (153, 32480), (190, 32633), (197, 32672),

Gene: Jstan_44 Start: 32983, Stop: 33813, Start Num: 41

Candidate Starts for Jstan_44:

(41, 32983), (Start: 52 @32995 has 45 MA's), (71, 33124), (134, 33457), (143, 33502), (145, 33511), (183, 33646), (188, 33676), (211, 33787),

Gene: JuneStar_46 Start: 34096, Stop: 34911, Start Num: 52

Candidate Starts for JuneStar_46:

(Start: 52 @34096 has 45 MA's), (68, 34213), (71, 34225), (91, 34333), (96, 34348), (134, 34555), (183, 34735), (204, 34831), (211, 34879),

Gene: Kalimba_41 Start: 30291, Stop: 31109, Start Num: 45

Candidate Starts for Kalimba_41:

(Start: 45 @30291 has 5 MA's), (Start: 55 @30309 has 62 MA's), (90, 30531), (107, 30612), (134, 30756), (136, 30774), (175, 30891), (193, 31002), (206, 31050), (211, 31083), (213, 31095),

Gene: Kamdara_43 Start: 32293, Stop: 33015, Start Num: 55

Candidate Starts for Kamdara_43:

(4, 32077), (Start: 51 @32281 has 8 MA's), (Start: 55 @32293 has 62 MA's), (58, 32317), (75, 32434), (78, 32446), (80, 32458), (103, 32554), (105, 32572), (109, 32593), (114, 32605), (134, 32716), (149, 32782), (153, 32800), (169, 32845), (178, 32878), (192, 32959), (197, 32992),

Gene: Kate33_46 Start: 31923, Stop: 32642, Start Num: 55

Candidate Starts for Kate33_46:

(Start: 51 @31911 has 8 MA's), (Start: 55 @31923 has 62 MA's), (58, 31947), (82, 32097), (109, 32223), (114, 32235), (118, 32253), (120, 32268), (133, 32340), (134, 32346), (153, 32430), (162, 32469), (190, 32583), (192, 32589), (197, 32622), (202, 32634),

Gene: Katzastrophic_44 Start: 32284, Stop: 33006, Start Num: 55

Candidate Starts for Katzastrophic_44:

(Start: 51 @32272 has 8 MA's), (Start: 55 @32284 has 62 MA's), (59, 32317), (78, 32437), (80, 32449), (82, 32458), (114, 32596), (124, 32647), (134, 32707), (149, 32773), (153, 32791), (192, 32950), (197, 32983),

Gene: Kaylissa_46 Start: 32908, Stop: 33726, Start Num: 52

Candidate Starts for Kaylissa_46:

(Start: 52 @32908 has 45 MA's), (69, 33028), (71, 33037), (92, 33142), (93, 33145), (96, 33154), (116, 33262), (120, 33292), (127, 33334), (134, 33370), (181, 33535), (204, 33652), (211, 33700),

Gene: KeAlii_42 Start: 32155, Stop: 32934, Start Num: 55

Candidate Starts for KeAlii_42:

(Start: 52 @32149 has 45 MA's), (Start: 55 @32155 has 62 MA's), (96, 32374), (113, 32467), (130, 32563), (134, 32581), (211, 32908), (213, 32920),

Gene: Kenzers_46 Start: 32014, Stop: 32736, Start Num: 55

Candidate Starts for Kenzers_46:

(4, 31798), (Start: 51 @32002 has 8 MA's), (Start: 55 @32014 has 62 MA's), (80, 32179), (82, 32188), (92, 32227), (103, 32275), (104, 32290), (109, 32314), (114, 32326), (118, 32344), (133, 32431), (134, 32437), (149, 32503), (190, 32677), (197, 32716),

Gene: Kieran_43 Start: 32296, Stop: 33018, Start Num: 55

Candidate Starts for Kieran_43:

(4, 32080), (Start: 51 @32284 has 8 MA's), (Start: 55 @32296 has 62 MA's), (58, 32320), (75, 32437), (78, 32449), (80, 32461), (103, 32557), (105, 32575), (109, 32596), (114, 32608), (134, 32719), (149, 32785), (153, 32803), (169, 32848), (192, 32962), (197, 32995),

Gene: LadyAstra_52 Start: 34290, Stop: 35267, Start Num: 47

Candidate Starts for LadyAstra_52:

(16, 34194), (Start: 47 @34290 has 3 MA's), (49, 34296), (74, 34455), (76, 34467), (125, 34704), (137, 34779), (152, 34845), (161, 34881), (173, 34926), (191, 35040), (198, 35085), (203, 35094), (215, 35187), (220, 35241),

Gene: LadyAstra_51 Start: 33299, Stop: 34114, Start Num: 48

Candidate Starts for LadyAstra_51:

(Start: 48 @33299 has 18 MA's), (69, 33422), (89, 33521), (93, 33533), (117, 33650), (128, 33716), (134, 33761), (167, 33869), (211, 34088),

Gene: Lahqtemish_45 Start: 32204, Stop: 32989, Start Num: 56

Candidate Starts for Lahqtemish_45:

(Start: 51 @32192 has 8 MA's), (Start: 56 @32204 has 19 MA's), (58, 32228), (78, 32357), (82, 32378), (103, 32465), (112, 32510), (114, 32516), (134, 32627), (147, 32687), (149, 32693), (161, 32744), (169, 32756), (190, 32864), (197, 32903), (207, 32936),

Gene: Lego_44 Start: 32226, Stop: 33044, Start Num: 52

Candidate Starts for Lego_44:

(Start: 52 @32226 has 45 MA's), (69, 32346), (71, 32355), (92, 32460), (93, 32463), (96, 32472), (116, 32580), (120, 32610), (134, 32688), (181, 32853), (204, 32970), (211, 33018),

Gene: Liebe_45 Start: 33847, Stop: 34644, Start Num: 51

Candidate Starts for Liebe_45:

(Start: 51 @33847 has 8 MA's), (59, 33889), (69, 33967), (98, 34096), (99, 34099), (118, 34201), (134, 34294), (186, 34498), (211, 34618), (213, 34630),

Gene: Lilo27_46 Start: 31852, Stop: 32571, Start Num: 55

Candidate Starts for Lilo27_46:

(4, 31636), (Start: 51 @31840 has 8 MA's), (Start: 55 @31852 has 62 MA's), (58, 31876), (78, 32005), (82, 32026), (114, 32164), (133, 32269), (134, 32275), (149, 32341), (153, 32359), (190, 32512), (197, 32551),

Gene: LimaBean_45 Start: 31536, Stop: 32321, Start Num: 56

Candidate Starts for LimaBean_45:

(4, 31320), (Start: 51 @31524 has 8 MA's), (Start: 56 @31536 has 19 MA's), (58, 31560), (70, 31644), (78, 31689), (82, 31710), (103, 31797), (112, 31842), (114, 31848), (118, 31866), (134, 31959), (147, 32019), (149, 32025), (161, 32076), (169, 32088), (197, 32235), (207, 32268),

Gene: LisoBros_44 Start: 34979, Stop: 35794, Start Num: 51

Candidate Starts for LisoBros_44:

(13, 34871), (14, 34877), (20, 34895), (24, 34904), (Start: 51 @34979 has 8 MA's), (71, 35111), (76, 35144), (92, 35216), (96, 35228), (134, 35438), (170, 35555), (174, 35570), (184, 35636), (211, 35768),

Gene: Lizalica_43 Start: 31676, Stop: 32488, Start Num: 52

Candidate Starts for Lizalica_43:

(Start: 52 @31676 has 45 MA's), (59, 31718), (71, 31805), (80, 31865), (86, 31895), (91, 31919), (134, 32141), (136, 32159), (143, 32186), (161, 32228), (204, 32414), (211, 32462),

Gene: London_42 Start: 32991, Stop: 33809, Start Num: 52

Candidate Starts for London_42:

(41, 32979), (Start: 52 @32991 has 45 MA's), (71, 33120), (134, 33453), (143, 33498), (145, 33507), (183, 33642), (188, 33672), (211, 33783),

Gene: Loviatar_46 Start: 33899, Stop: 34618, Start Num: 56

Candidate Starts for Loviatar_46:

(4, 33683), (Start: 51 @33887 has 8 MA's), (Start: 56 @33899 has 19 MA's), (58, 33923), (72, 34013), (80, 34064), (82, 34073), (92, 34112), (101, 34148), (112, 34205), (114, 34211), (134, 34322), (149, 34388), (153, 34406), (169, 34451), (177, 34481), (190, 34559), (197, 34598), (200, 34607),

Gene: Lynlen_46 Start: 32014, Stop: 32733, Start Num: 55

Candidate Starts for Lynlen_46:

(4, 31798), (Start: 51 @32002 has 8 MA's), (Start: 55 @32014 has 62 MA's), (75, 32155), (82, 32188), (109, 32314), (114, 32326), (133, 32431), (134, 32437), (141, 32473), (147, 32497), (149, 32503), (190, 32674), (197, 32713), (202, 32725),

Gene: MaGuCo_42 Start: 32331, Stop: 33128, Start Num: 51

Candidate Starts for MaGuCo_42:

(Start: 51 @32331 has 8 MA's), (59, 32373), (69, 32451), (98, 32580), (99, 32583), (118, 32685), (134, 32778), (186, 32982), (211, 33102), (213, 33114),

Gene: Mabodamaca_50 Start: 35098, Stop: 35934, Start Num: 48

Candidate Starts for Mabodamaca_50:

(Start: 48 @35098 has 18 MA's), (61, 35161), (65, 35185), (117, 35434), (134, 35530), (150, 35602), (211, 35887),

Gene: Maureen_45 Start: 33847, Stop: 34644, Start Num: 51

Candidate Starts for Maureen_45:

(Start: 51 @33847 has 8 MA's), (59, 33889), (69, 33967), (98, 34096), (99, 34099), (118, 34201), (134, 34294), (186, 34498), (211, 34618), (213, 34630),

Gene: Michkear_44 Start: 33150, Stop: 33947, Start Num: 51

Candidate Starts for Michkear_44:

(Start: 51 @33150 has 8 MA's), (71, 33279), (86, 33357), (87, 33360), (134, 33603), (211, 33921),

Gene: Milomuff_45 Start: 31760, Stop: 32479, Start Num: 55

Candidate Starts for Milomuff_45:

(Start: 51 @31748 has 8 MA's), (Start: 55 @31760 has 62 MA's), (101, 32009), (104, 32036), (114, 32072), (130, 32165), (133, 32177), (134, 32183), (149, 32249), (156, 32273), (186, 32405), (187, 32408), (197, 32459),

Gene: MiniMommy_50 Start: 34167, Stop: 35138, Start Num: 47

Candidate Starts for MiniMommy_50:

(Start: 38 @34137 has 2 MA's), (Start: 47 @34167 has 3 MA's), (49, 34173), (74, 34329), (76, 34341), (125, 34578), (137, 34653), (152, 34719), (161, 34755), (164, 34773), (173, 34800), (191, 34911), (198, 34956), (203, 34965), (220, 35112),

Gene: MiniMommy_49 Start: 33178, Stop: 33990, Start Num: 48

Candidate Starts for MiniMommy_49:

(Start: 32 @33133 has 1 MA's), (43, 33169), (Start: 48 @33178 has 18 MA's), (69, 33301), (89, 33400), (117, 33529), (134, 33640), (201, 33910), (211, 33964),

Gene: MissSwiss_45 Start: 31166, Stop: 31975, Start Num: 52

Candidate Starts for MissSwiss_45:

(Start: 52 @31166 has 45 MA's), (71, 31295), (81, 31358), (109, 31493), (134, 31622), (179, 31778), (196, 31883), (211, 31949),

Gene: Moss_41 Start: 30380, Stop: 31198, Start Num: 45

Candidate Starts for Moss_41:

(19, 30296), (Start: 45 @30380 has 5 MA's), (Start: 55 @30398 has 62 MA's), (90, 30620), (107, 30701), (134, 30845), (136, 30863), (175, 30980), (178, 30992), (193, 31091), (211, 31172), (213, 31184),

Gene: MsUbiquitous_46 Start: 31958, Stop: 32680, Start Num: 55

Candidate Starts for MsUbiquitous_46:

(4, 31742), (Start: 51 @31946 has 8 MA's), (Start: 55 @31958 has 62 MA's), (58, 31982), (78, 32111), (82, 32132), (114, 32270), (133, 32375), (134, 32381), (149, 32447), (153, 32465), (197, 32657),

Gene: Mudpuppy_41 Start: 32165, Stop: 32983, Start Num: 52

Candidate Starts for Mudpuppy_41:

(Start: 52 @32165 has 45 MA's), (69, 32285), (71, 32294), (93, 32402), (96, 32411), (116, 32519), (120, 32549), (134, 32627), (181, 32792), (204, 32909), (211, 32957),

Gene: Mysterium_40 Start: 30210, Stop: 31028, Start Num: 45

Candidate Starts for Mysterium_40:

(19, 30126), (Start: 45 @30210 has 5 MA's), (Start: 55 @30228 has 62 MA's), (90, 30450), (107, 30531), (134, 30675), (136, 30693), (175, 30810), (178, 30822), (211, 31002), (213, 31014),

Gene: Nicky22_46 Start: 32406, Stop: 33125, Start Num: 56

Candidate Starts for Nicky22_46:

(Start: 51 @32394 has 8 MA's), (Start: 56 @32406 has 19 MA's), (58, 32430), (80, 32571), (82, 32580), (92, 32619), (105, 32685), (112, 32712), (114, 32718), (134, 32829), (153, 32913), (169, 32958), (177, 32988), (184, 33039), (190, 33066), (197, 33105),

Gene: Niobe_42 Start: 32995, Stop: 33813, Start Num: 52

Candidate Starts for Niobe_42:

(41, 32983), (Start: 52 @32995 has 45 MA's), (71, 33124), (134, 33457), (143, 33502), (145, 33511), (183, 33646), (188, 33676), (211, 33787),

Gene: Nitro_43 Start: 32794, Stop: 33615, Start Num: 52

Candidate Starts for Nitro_43:

(Start: 52 @32794 has 45 MA's), (71, 32923), (81, 32986), (134, 33250), (149, 33316), (176, 33406), (179, 33418), (183, 33445), (204, 33541), (211, 33589),

Gene: ObiToo_50 Start: 33306, Stop: 34097, Start Num: 52

Candidate Starts for ObiToo_50:

(Start: 52 @33306 has 45 MA's), (109, 33624), (134, 33753), (193, 33990), (204, 34023), (211, 34071),

Gene: Olliecat_42 Start: 30495, Stop: 31241, Start Num: 55

Candidate Starts for Olliecat_42:

(Start: 54 @30489 has 1 MA's), (Start: 55 @30495 has 62 MA's), (60, 30537), (82, 30681), (109, 30807), (119, 30849), (134, 30930), (149, 30996), (159, 31038), (177, 31092), (178, 31095), (186, 31155), (189, 31167), (192, 31176), (195, 31203), (197, 31209),

Gene: Origami_51 Start: 34082, Stop: 35059, Start Num: 47

Candidate Starts for Origami_51:

(16, 33986), (Start: 47 @34082 has 3 MA's), (49, 34088), (74, 34247), (76, 34259), (125, 34496), (137, 34571), (152, 34637), (161, 34673), (173, 34718), (191, 34832), (198, 34877), (203, 34886), (215, 34979), (220, 35033),

Gene: Origami_50 Start: 33091, Stop: 33906, Start Num: 48

Candidate Starts for Origami_50:

(Start: 48 @33091 has 18 MA's), (69, 33214), (89, 33313), (93, 33325), (117, 33442), (128, 33508), (134, 33553), (167, 33661), (211, 33880),

Gene: PandaPo_45 Start: 31171, Stop: 31980, Start Num: 52

Candidate Starts for PandaPo_45:

(Start: 52 @31171 has 45 MA's), (71, 31300), (81, 31363), (109, 31498), (127, 31591), (134, 31627), (179, 31783), (196, 31888), (211, 31954),

Gene: PastaFagioli_46 Start: 32598, Stop: 33383, Start Num: 56

Candidate Starts for PastaFagioli_46:

(Start: 51 @32586 has 8 MA's), (Start: 56 @32598 has 19 MA's), (58, 32622), (78, 32751), (82, 32772), (103, 32859), (112, 32904), (114, 32910), (134, 33021), (147, 33081), (149, 33087), (161, 33138), (169, 33150), (197, 33297), (207, 33330),

Gene: Pecas_47 Start: 32158, Stop: 32877, Start Num: 55

Candidate Starts for Pecas_47:

(4, 31942), (Start: 51 @32146 has 8 MA's), (Start: 55 @32158 has 62 MA's), (58, 32182), (78, 32311), (82, 32332), (114, 32470), (133, 32575), (134, 32581), (149, 32647), (153, 32665), (190, 32818), (197, 32857),

Gene: Percival_51 Start: 34934, Stop: 35809, Start Num: 48

Candidate Starts for Percival_51:

(25, 34862), (Start: 48 @34934 has 18 MA's), (91, 35171), (96, 35186), (103, 35222), (131, 35369), (134, 35381), (147, 35441), (148, 35444), (154, 35462), (183, 35582), (186, 35603), (212, 35732), (217, 35780), (219, 35792),

Gene: PhigPhack_46 Start: 31778, Stop: 32497, Start Num: 55

Candidate Starts for PhigPhack_46:

(4, 31562), (Start: 51 @31766 has 8 MA's), (Start: 55 @31778 has 62 MA's), (82, 31952), (92, 31991), (109, 32078), (114, 32090), (120, 32123), (133, 32195), (134, 32201), (147, 32261), (149, 32267), (190, 32438), (197, 32477),

Gene: Phisb_46 Start: 32003, Stop: 32722, Start Num: 55

Candidate Starts for Phisb_46:

(4, 31787), (Start: 51 @31991 has 8 MA's), (Start: 55 @32003 has 62 MA's), (58, 32027), (75, 32144), (78, 32156), (82, 32177), (114, 32315), (133, 32420), (134, 32426), (149, 32492), (153, 32510), (190, 32663), (197, 32702),

Gene: Phives_48 Start: 34043, Stop: 34849, Start Num: 52

Candidate Starts for Phives_48:

(Start: 52 @34043 has 45 MA's), (71, 34172), (96, 34295), (134, 34502), (170, 34613), (204, 34775), (211, 34823),

Gene: Pixelle_45 Start: 33205, Stop: 34023, Start Num: 52

Candidate Starts for Pixelle_45:

(18, 33112), (23, 33127), (24, 33130), (Start: 42 @33196 has 1 MA's), (Start: 52 @33205 has 45 MA's), (71, 33334), (98, 33466), (134, 33667), (183, 33856), (188, 33886), (211, 33997),

Gene: PondAmelia_56 Start: 32820, Stop: 33539, Start Num: 56

Candidate Starts for PondAmelia_56:

(Start: 51 @32808 has 8 MA's), (Start: 56 @32820 has 19 MA's), (80, 32985), (82, 32994), (92, 33033), (101, 33069), (112, 33126), (114, 33132), (134, 33243), (149, 33309), (153, 33327), (169, 33372), (171, 33378), (177, 33402), (190, 33480), (197, 33519), (200, 33528),

Gene: Powerpuff_47 Start: 33614, Stop: 34432, Start Num: 52

Candidate Starts for Powerpuff_47:

(Start: 52 @33614 has 45 MA's), (69, 33734), (71, 33743), (92, 33848), (93, 33851), (96, 33860), (116, 33968), (120, 33998), (134, 34076), (181, 34241), (204, 34358), (211, 34406),

Gene: Pumpkins_44 Start: 32640, Stop: 33479, Start Num: 52

Candidate Starts for Pumpkins_44:

(Start: 52 @32640 has 45 MA's), (71, 32769), (73, 32787), (81, 32832), (93, 32877), (134, 33099), (204, 33405), (211, 33453),

Gene: QMacho_48 Start: 32641, Stop: 33360, Start Num: 56

Candidate Starts for QMacho_48:

(4, 32425), (Start: 51 @32629 has 8 MA's), (Start: 56 @32641 has 19 MA's), (58, 32665), (80, 32806), (82, 32815), (92, 32854), (112, 32947), (114, 32953), (134, 33064), (149, 33130), (153, 33148), (169, 33193), (177, 33223), (190, 33301), (197, 33340),

Gene: Quenya_45 Start: 32476, Stop: 33198, Start Num: 55

Candidate Starts for Quenya_45:

(4, 32260), (Start: 51 @32464 has 8 MA's), (Start: 55 @32476 has 62 MA's), (59, 32509), (78, 32629), (80, 32641), (82, 32650), (101, 32725), (103, 32737), (109, 32776), (114, 32788), (118, 32806), (133, 32893), (134, 32899), (144, 32944), (149, 32965), (169, 33028), (178, 33061), (184, 33109), (197, 33175),

Gene: Reedo_44 Start: 30708, Stop: 31547, Start Num: 52

Candidate Starts for Reedo_44:

(Start: 52 @30708 has 45 MA's), (71, 30837), (73, 30855), (79, 30882), (120, 31092), (127, 31134), (134, 31170), (188, 31410), (211, 31521),

Gene: RockScotty_40 Start: 30226, Stop: 31026, Start Num: 55

Candidate Starts for RockScotty_40:

(19, 30124), (Start: 45 @30208 has 5 MA's), (Start: 55 @30226 has 62 MA's), (90, 30448), (107, 30529), (134, 30673), (136, 30691), (175, 30808), (178, 30820), (211, 31000), (213, 31012),

Gene: Rollins_43 Start: 29896, Stop: 30603, Start Num: 57

Candidate Starts for Rollins_43:

(3, 29653), (5, 29680), (Start: 53 @29878 has 10 MA's), (Start: 57 @29896 has 1 MA's), (80, 30043), (82, 30052), (85, 30067), (92, 30091), (109, 30178), (114, 30190), (118, 30208), (133, 30295), (134, 30301), (144, 30346), (149, 30367), (153, 30385), (197, 30577), (203, 30592),

Gene: Rona_43 Start: 32279, Stop: 33001, Start Num: 55

Candidate Starts for Rona_43:

(4, 32063), (Start: 51 @32267 has 8 MA's), (Start: 55 @32279 has 62 MA's), (58, 32303), (75, 32420), (78, 32432), (80, 32444), (103, 32540), (105, 32558), (109, 32579), (114, 32591), (134, 32702), (149, 32768), (153, 32786), (169, 32831), (178, 32864), (192, 32945), (197, 32978),

Gene: Sabourin_41 Start: 30309, Stop: 31109, Start Num: 55

Candidate Starts for Sabourin_41:

(Start: 45 @30291 has 5 MA's), (Start: 55 @30309 has 62 MA's), (90, 30531), (107, 30612), (134, 30756), (136, 30774), (175, 30891), (193, 31002), (206, 31050), (211, 31083), (213, 31095),

Gene: Samy_68 Start: 44824, Stop: 45594, Start Num: 22

Candidate Starts for Samy_68:

(Start: 22 @44824 has 1 MA's), (Start: 42 @44887 has 1 MA's), (Start: 53 @44902 has 10 MA's), (67, 44995), (75, 45052), (82, 45085), (105, 45190), (119, 45244), (126, 45277), (140, 45358), (155, 45409), (174, 45466), (194, 45583),

Gene: SanaSana_48 Start: 33508, Stop: 34227, Start Num: 56

Candidate Starts for SanaSana_48:

(4, 33292), (Start: 51 @33496 has 8 MA's), (Start: 56 @33508 has 19 MA's), (58, 33532), (72, 33622), (75, 33649), (80, 33673), (82, 33682), (92, 33721), (101, 33757), (105, 33787), (112, 33814), (114, 33820), (134, 33931), (149, 33997), (153, 34015), (169, 34060), (172, 34069), (177, 34090), (190, 34168), (197, 34207), (202, 34219),

Gene: SansAfet_46 Start: 31865, Stop: 32584, Start Num: 55

Candidate Starts for SansAfet_46:

(4, 31649), (Start: 51 @31853 has 8 MA's), (Start: 55 @31865 has 62 MA's), (68, 31964), (82, 32039), (92, 32078), (109, 32165), (114, 32177), (120, 32210), (133, 32282), (134, 32288), (147, 32348), (149, 32354), (153, 32372), (190, 32525), (197, 32564),

Gene: SarBear_45 Start: 31651, Stop: 32370, Start Num: 55

Candidate Starts for SarBear_45:

(4, 31435), (Start: 51 @31639 has 8 MA's), (Start: 55 @31651 has 62 MA's), (58, 31675), (78, 31804), (82, 31825), (114, 31963), (133, 32068), (134, 32074), (149, 32140), (153, 32158), (190, 32311), (197, 32350),

Gene: Schaffner_45 Start: 32695, Stop: 33489, Start Num: 52

Candidate Starts for Schaffner_45:

(Start: 52 @32695 has 45 MA's), (71, 32824), (109, 33013), (134, 33142), (166, 33235), (181, 33292), (204, 33409), (211, 33457),

Gene: ShakeltOph_49 Start: 33177, Stop: 33989, Start Num: 48

Candidate Starts for ShakeltOph_49:

(Start: 32 @33132 has 1 MA's), (43, 33168), (Start: 48 @33177 has 18 MA's), (69, 33300), (89, 33399), (117, 33528), (134, 33639), (201, 33909), (211, 33963),

Gene: ShakeltOph_50 Start: 34166, Stop: 35137, Start Num: 47

Candidate Starts for ShakeltOph_50:

(Start: 38 @34136 has 2 MA's), (Start: 47 @34166 has 3 MA's), (49, 34172), (74, 34328), (76, 34340), (125, 34577), (137, 34652), (152, 34718), (161, 34754), (164, 34772), (173, 34799), (191, 34910), (198, 34955), (203, 34964), (220, 35111),

Gene: Sharkboy_44 Start: 32378, Stop: 33100, Start Num: 55

Candidate Starts for Sharkboy_44:

(4, 32162), (Start: 51 @32366 has 8 MA's), (Start: 55 @32378 has 62 MA's), (58, 32402), (75, 32519), (78, 32531), (80, 32543), (103, 32639), (105, 32657), (109, 32678), (114, 32690), (134, 32801), (149, 32867), (153, 32885), (169, 32930), (178, 32963), (192, 33044), (197, 33077),

Gene: Shayna_45 Start: 31215, Stop: 31955, Start Num: 55

Candidate Starts for Shayna_45:

(4, 30999), (Start: 51 @31203 has 8 MA's), (Start: 55 @31215 has 62 MA's), (78, 31377), (80, 31389), (82, 31398), (112, 31530), (114, 31536), (132, 31638), (133, 31641), (134, 31647), (157, 31740), (177, 31806), (187, 31872), (192, 31890), (197, 31923),

Gene: Simpson_47 Start: 32526, Stop: 33338, Start Num: 52

Candidate Starts for Simpson_47:

(Start: 52 @32526 has 45 MA's), (62, 32601), (71, 32655), (83, 32730), (86, 32745), (91, 32769), (134, 32991), (136, 33009), (161, 33078), (181, 33147), (204, 33264), (211, 33312),

Gene: SirBeanington_45 Start: 32162, Stop: 32881, Start Num: 55

Candidate Starts for SirBeanington_45:

(4, 31946), (Start: 51 @32150 has 8 MA's), (Start: 55 @32162 has 62 MA's), (75, 32303), (82, 32336), (109, 32462), (114, 32474), (130, 32567), (133, 32579), (134, 32585), (141, 32621), (147, 32645), (149, 32651), (190, 32822), (197, 32861),

Gene: Skelbel_43 Start: 32995, Stop: 33813, Start Num: 52

Candidate Starts for Skelbel_43:

(41, 32983), (Start: 52 @32995 has 45 MA's), (71, 33124), (134, 33457), (143, 33502), (145, 33511), (183, 33646), (188, 33676), (211, 33787),

Gene: Skylord_43 Start: 29809, Stop: 30534, Start Num: 53

Candidate Starts for Skylord_43:

(3, 29584), (5, 29611), (Start: 53 @29809 has 10 MA's), (Start: 57 @29827 has 1 MA's), (80, 29974), (82, 29983), (85, 29998), (92, 30022), (109, 30109), (114, 30121), (118, 30139), (133, 30226), (134, 30232), (144, 30277), (149, 30298), (153, 30316), (197, 30508), (203, 30523),

Gene: Slay_46 Start: 32379, Stop: 33098, Start Num: 55

Candidate Starts for Slay_46:

(1, 32070), (4, 32163), (Start: 51 @32367 has 8 MA's), (Start: 55 @32379 has 62 MA's), (78, 32532), (82, 32553), (114, 32691), (133, 32796), (134, 32802), (149, 32868), (153, 32886), (190, 33039), (197, 33078), (202, 33090),

Gene: Snek_42 Start: 30604, Stop: 31398, Start Num: 52

Candidate Starts for Snek_42:

(12, 30475), (15, 30508), (17, 30511), (Start: 28 @30544 has 1 MA's), (Start: 42 @30595 has 1 MA's), (Start: 52 @30604 has 45 MA's), (71, 30733), (73, 30751), (134, 31039), (139, 31063), (168, 31156), (181, 31207), (188, 31258), (204, 31324), (211, 31372),

Gene: Softsoap_45 Start: 31776, Stop: 32495, Start Num: 55

Candidate Starts for Softsoap_45:

(Start: 51 @31764 has 8 MA's), (Start: 55 @31776 has 62 MA's), (101, 32025), (104, 32052), (114, 32088), (130, 32181), (133, 32193), (134, 32199), (149, 32265), (156, 32289), (186, 32421), (187, 32424), (197, 32475),

Gene: Solea_46 Start: 31760, Stop: 32479, Start Num: 55

Candidate Starts for Solea_46:

(Start: 51 @31748 has 8 MA's), (Start: 55 @31760 has 62 MA's), (101, 32009), (104, 32036), (114, 32072), (130, 32165), (133, 32177), (134, 32183), (149, 32249), (156, 32273), (186, 32405), (187, 32408), (197, 32459),

Gene: Soondubu_40 Start: 33487, Stop: 34296, Start Num: 51

Candidate Starts for Soondubu_40:

(Start: 51 @33487 has 8 MA's), (116, 33847), (123, 33889), (134, 33952), (136, 33970), (139, 33976), (184, 34138), (201, 34216), (211, 34270),

Gene: Sooty_41 Start: 30324, Stop: 31124, Start Num: 55

Candidate Starts for Sooty_41:

(Start: 45 @30306 has 5 MA's), (Start: 55 @30324 has 62 MA's), (90, 30546), (107, 30627), (134, 30771), (136, 30789), (175, 30906), (193, 31017), (206, 31065), (211, 31098), (213, 31110),

Gene: SpecialK_41 Start: 30306, Stop: 31106, Start Num: 55

Candidate Starts for SpecialK_41:

(19, 30204), (Start: 45 @30288 has 5 MA's), (Start: 55 @30306 has 62 MA's), (90, 30528), (107, 30609), (134, 30753), (136, 30771), (175, 30888), (178, 30900), (193, 30999), (211, 31080), (213, 31092),

Gene: Squircle_42 Start: 30488, Stop: 31240, Start Num: 54

Candidate Starts for Squircle_42:

(Start: 54 @30488 has 1 MA's), (Start: 55 @30494 has 62 MA's), (60, 30536), (82, 30680), (109, 30806), (119, 30848), (134, 30929), (149, 30995), (159, 31037), (177, 31091), (178, 31094), (186, 31154), (189, 31166), (192, 31175), (195, 31202), (197, 31208),

Gene: Stoor_46 Start: 33177, Stop: 33896, Start Num: 55

Candidate Starts for Stoor_46:

(4, 32961), (Start: 51 @33165 has 8 MA's), (Start: 55 @33177 has 62 MA's), (58, 33201), (59, 33210), (72, 33291), (75, 33318), (78, 33330), (80, 33342), (82, 33351), (92, 33390), (101, 33426), (104, 33453), (109, 33477), (114, 33489), (118, 33507), (133, 33594), (134, 33600), (147, 33660), (153, 33684), (177, 33759), (184, 33810), (186, 33822), (190, 33837), (192, 33843), (197, 33876), (198, 33882),

Gene: Stromboli_46 Start: 33039, Stop: 33758, Start Num: 56

Candidate Starts for Stromboli_46:

(4, 32823), (Start: 51 @33027 has 8 MA's), (Start: 56 @33039 has 19 MA's), (58, 33063), (80, 33204), (82, 33213), (92, 33252), (101, 33288), (112, 33345), (114, 33351), (134, 33462), (149, 33528), (153, 33546), (169, 33591), (177, 33621), (190, 33699), (197, 33738),

Gene: Stuu_41 Start: 30418, Stop: 31218, Start Num: 55

Candidate Starts for Stuu_41:

(19, 30316), (Start: 45 @30400 has 5 MA's), (Start: 55 @30418 has 62 MA's), (90, 30640), (107, 30721), (134, 30865), (136, 30883), (175, 31000), (178, 31012), (193, 31111), (211, 31192), (213, 31204),

Gene: SuMoo_53 Start: 34756, Stop: 35586, Start Num: 48

Candidate Starts for SuMoo_53:

(37, 34720), (Start: 48 @34756 has 18 MA's), (61, 34819), (65, 34843), (117, 35092), (134, 35188), (211, 35545),

Gene: Subaru_43 Start: 32979, Stop: 33809, Start Num: 41

Candidate Starts for Subaru_43:

(41, 32979), (Start: 52 @32991 has 45 MA's), (71, 33120), (134, 33453), (143, 33498), (145, 33507), (183, 33642), (188, 33672), (211, 33783),

Gene: Sue2_45 Start: 32968, Stop: 33750, Start Num: 55

Candidate Starts for Sue2_45:

(Start: 55 @32968 has 62 MA's), (108, 33265), (113, 33292), (134, 33406), (181, 33562), (186, 33604), (188, 33613), (211, 33724),

Gene: SunnyD_45 Start: 31220, Stop: 31960, Start Num: 55

Candidate Starts for SunnyD_45:

(4, 31004), (Start: 51 @31208 has 8 MA's), (Start: 55 @31220 has 62 MA's), (78, 31382), (80, 31394), (82, 31403), (112, 31535), (114, 31541), (133, 31646), (134, 31652), (157, 31745), (177, 31811), (187, 31877), (192, 31895), (197, 31928),

Gene: SuperHands_49 Start: 35417, Stop: 36313, Start Num: 48

Candidate Starts for SuperHands_49:

(25, 35345), (Start: 48 @35417 has 18 MA's), (96, 35669), (131, 35852), (134, 35864), (167, 36005), (169, 36011), (172, 36020), (183, 36086), (186, 36107), (212, 36236), (217, 36284),

Gene: Swervy_46 Start: 31923, Stop: 32642, Start Num: 55

Candidate Starts for Swervy_46:

(Start: 51 @31911 has 8 MA's), (Start: 55 @31923 has 62 MA's), (58, 31947), (78, 32076), (82, 32097), (114, 32235), (133, 32340), (134, 32346), (149, 32412), (153, 32430), (190, 32583), (197, 32622),

Gene: Tallboi_44 Start: 33369, Stop: 34190, Start Num: 52

Candidate Starts for Tallboi_44:

(Start: 52 @33369 has 45 MA's), (71, 33498), (81, 33561), (127, 33789), (134, 33825), (183, 34020), (193, 34083), (204, 34116), (211, 34164),

Gene: Tbone_44 Start: 32394, Stop: 33212, Start Num: 52

Candidate Starts for Tbone_44:

(Start: 52 @32394 has 45 MA's), (69, 32514), (71, 32523), (92, 32628), (93, 32631), (96, 32640), (116, 32748), (120, 32778), (134, 32856), (181, 33021), (204, 33138), (211, 33186),

Gene: Teagster_46 Start: 32113, Stop: 32853, Start Num: 55

Candidate Starts for Teagster_46:

(Start: 51 @32101 has 8 MA's), (Start: 55 @32113 has 62 MA's), (78, 32275), (80, 32287), (82, 32296), (112, 32428), (114, 32434), (132, 32536), (133, 32539), (134, 32545), (157, 32638), (177, 32704), (187, 32770), (192, 32788), (197, 32821),

Gene: TforTroy_46 Start: 32506, Stop: 33342, Start Num: 52

Candidate Starts for TforTroy_46:

(Start: 52 @32506 has 45 MA's), (71, 32635), (73, 32653), (92, 32740), (93, 32743), (134, 32965), (147, 33028), (179, 33145), (186, 33193), (204, 33268), (211, 33316),

Gene: ThursdayNight_47 Start: 32985, Stop: 33788, Start Num: 52

Candidate Starts for ThursdayNight_47:

(12, 32850), (Start: 52 @32985 has 45 MA's), (69, 33108), (116, 33333), (118, 33345), (127, 33402), (134, 33438), (147, 33501), (211, 33762), (213, 33774),

Gene: Tian_43 Start: 33180, Stop: 33998, Start Num: 52

Candidate Starts for Tian_43:

(18, 33087), (23, 33102), (24, 33105), (Start: 42 @33171 has 1 MA's), (Start: 52 @33180 has 45 MA's), (71, 33309), (98, 33441), (134, 33642), (183, 33831), (188, 33861), (211, 33972),

Gene: Tuck_48 Start: 34596, Stop: 35402, Start Num: 52

Candidate Starts for Tuck_48:

(Start: 52 @34596 has 45 MA's), (71, 34725), (96, 34848), (134, 35055), (170, 35166), (204, 35328), (211, 35376),

Gene: TukTuk_46 Start: 31931, Stop: 32650, Start Num: 55

Candidate Starts for TukTuk_46:

(4, 31715), (Start: 51 @31919 has 8 MA's), (Start: 55 @31931 has 62 MA's), (58, 31955), (78, 32084), (82, 32105), (114, 32243), (133, 32348), (134, 32354), (149, 32420), (153, 32438), (190, 32591), (197, 32630),

Gene: Turab_42 Start: 31623, Stop: 32456, Start Num: 44

Candidate Starts for Turab_42:

(44, 31623), (Start: 52 @31635 has 45 MA's), (71, 31764), (76, 31797), (81, 31827), (127, 32055), (134, 32091), (179, 32259), (204, 32382), (211, 32430),

Gene: Tutumahutu_46 Start: 32497, Stop: 33315, Start Num: 52

Candidate Starts for Tutumahutu_46:

(Start: 52 @32497 has 45 MA's), (69, 32617), (71, 32626), (92, 32731), (93, 32734), (96, 32743), (116, 32851), (120, 32881), (134, 32959), (181, 33124), (204, 33241), (211, 33289),

Gene: Tweety19_43 Start: 30544, Stop: 31398, Start Num: 28

Candidate Starts for Tweety19_43:

(12, 30475), (15, 30508), (17, 30511), (Start: 28 @30544 has 1 MA's), (Start: 42 @30595 has 1 MA's), (Start: 52 @30604 has 45 MA's), (71, 30733), (73, 30751), (134, 31039), (139, 31063), (168, 31156), (181, 31207), (188, 31258), (204, 31324), (211, 31372),

Gene: UtzChips_49 Start: 33579, Stop: 34418, Start Num: 48

Candidate Starts for UtzChips_49:

(2, 33321), (6, 33396), (26, 33510), (Start: 48 @33579 has 18 MA's), (91, 33801), (134, 34011), (146, 34062), (148, 34071), (153, 34095), (181, 34206), (211, 34368), (214, 34407),

Gene: VResidence_44 Start: 31752, Stop: 32570, Start Num: 52

Candidate Starts for VResidence_44:

(Start: 52 @31752 has 45 MA's), (71, 31881), (93, 31989), (96, 31998), (120, 32136), (134, 32214), (181, 32379), (184, 32409), (204, 32496), (211, 32544),

Gene: Vitas_43 Start: 29791, Stop: 30516, Start Num: 53

Candidate Starts for Vitas_43:

(3, 29566), (5, 29593), (Start: 53 @29791 has 10 MA's), (Start: 57 @29809 has 1 MA's), (80, 29956), (82, 29965), (85, 29980), (92, 30004), (109, 30091), (114, 30103), (118, 30121), (133, 30208), (134, 30214), (144, 30259), (149, 30280), (153, 30298), (197, 30490), (203, 30505),

Gene: VroomVroom_47 Start: 33099, Stop: 33911, Start Num: 48

Candidate Starts for VroomVroom_47:

(Start: 48 @33099 has 18 MA's), (63, 33183), (69, 33222), (89, 33321), (93, 33333), (104, 33393), (117, 33450), (129, 33525), (134, 33561), (211, 33885),

Gene: VroomVroom_48 Start: 34057, Stop: 35061, Start Num: 38

Candidate Starts for VroomVroom_48:

(Start: 38 @34057 has 2 MA's), (Start: 47 @34087 has 3 MA's), (49, 34093), (74, 34252), (76, 34264), (125, 34501), (137, 34576), (152, 34642), (161, 34678), (173, 34723), (191, 34834), (198, 34879), (203, 34888), (220, 35035),

Gene: WalkingDead_47 Start: 33791, Stop: 34510, Start Num: 56

Candidate Starts for WalkingDead_47:

(4, 33572), (Start: 56 @33791 has 19 MA's), (58, 33815), (59, 33824), (75, 33932), (78, 33944), (80, 33956), (82, 33965), (92, 34004), (101, 34040), (104, 34067), (109, 34091), (114, 34103), (118, 34121), (133, 34208), (134, 34214), (147, 34274), (153, 34298), (177, 34373), (184, 34424), (186, 34436), (190, 34451), (192, 34457), (197, 34490),

Gene: Warda_45 Start: 32571, Stop: 33389, Start Num: 52

Candidate Starts for Warda_45:

(Start: 52 @32571 has 45 MA's), (69, 32691), (71, 32700), (92, 32805), (93, 32808), (96, 32817), (116, 32925), (120, 32955), (134, 33033), (181, 33198), (204, 33315), (211, 33363),

Gene: Wildwest_43 Start: 31833, Stop: 32639, Start Num: 52

Candidate Starts for Wildwest_43:

(8, 31668), (10, 31683), (11, 31689), (Start: 52 @31833 has 45 MA's), (69, 31953), (71, 31962), (91, 32070), (96, 32085), (129, 32268), (134, 32292), (170, 32403), (204, 32565), (211, 32613),

Gene: Yang_44 Start: 31815, Stop: 32630, Start Num: 52

Candidate Starts for Yang_44:

(Start: 52 @31815 has 45 MA's), (68, 31932), (71, 31944), (91, 32052), (96, 32067), (134, 32274), (181, 32433), (183, 32454), (204, 32550), (211, 32598),

Gene: YesChef_45 Start: 32473, Stop: 33291, Start Num: 52

Candidate Starts for YesChef_45:

(Start: 52 @32473 has 45 MA's), (69, 32593), (71, 32602), (92, 32707), (93, 32710), (96, 32719), (116, 32827), (120, 32857), (134, 32935), (181, 33100), (204, 33217), (211, 33265),

Gene: Zeta1847_42 Start: 31621, Stop: 32589, Start Num: 30

Candidate Starts for Zeta1847_42:

(Start: 30 @31621 has 1 MA's), (40, 31654), (Start: 48 @31672 has 18 MA's), (Start: 56 @31687 has 19 MA's), (88, 31882), (91, 31894), (106, 31972), (133, 32104), (134, 32110), (135, 32122), (142, 32152), (161, 32227), (187, 32332), (210, 32431), (211, 32449), (213, 32461),