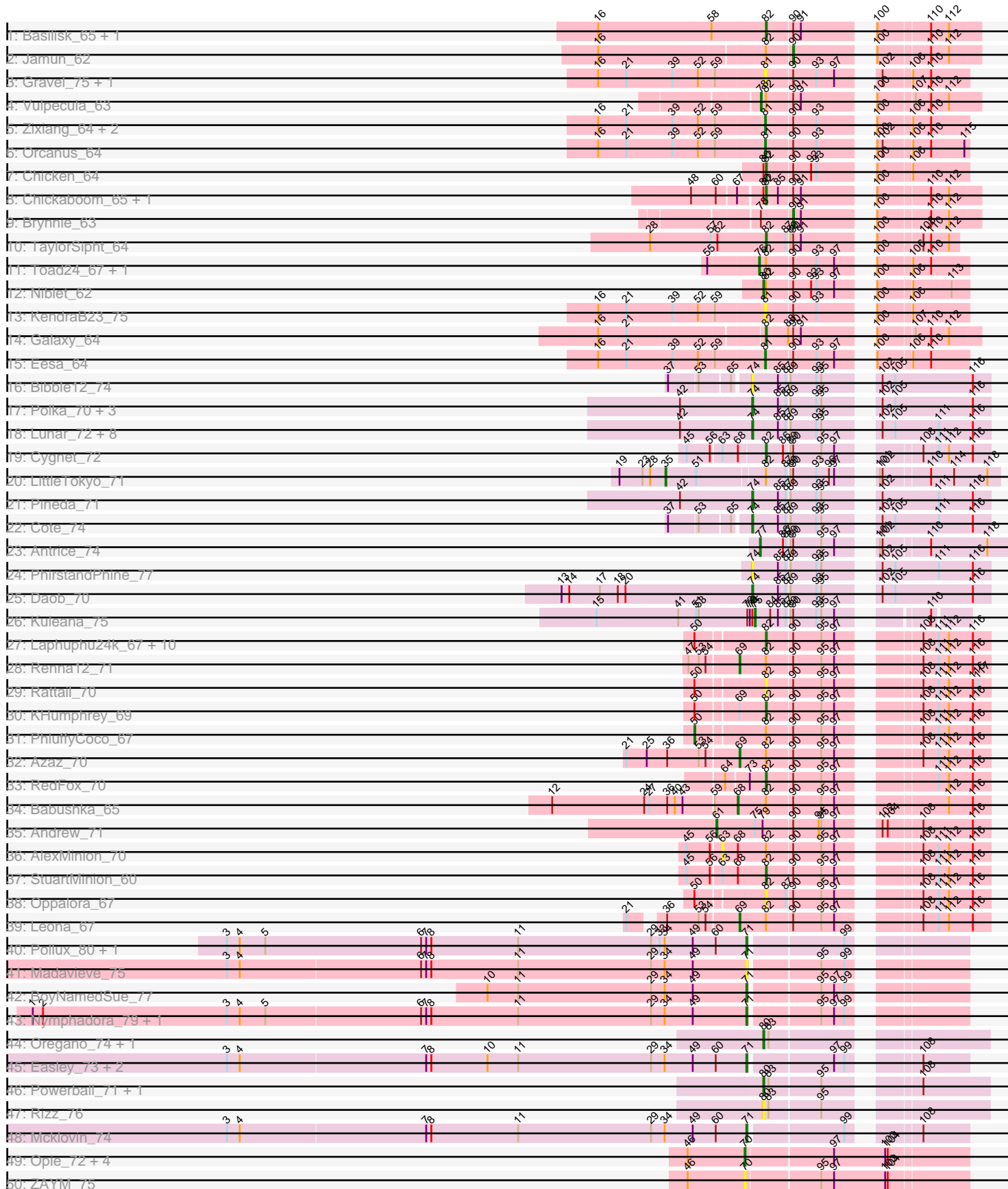


Pham 308087



Note: Tracks are now grouped by subcluster and scaled. Switching in subcluster is indicated by changes in track color. Track scale is now set by default to display the region 30 bp upstream of start 1 to 30 bp downstream of the last possible start. If this default region is judged to be packed too tightly with annotated starts, the track will be further scaled to only show that region of the ORF with annotated starts. This action will be indicated by adding "Zoomed" to the title. For starts, yellow indicates the location of called starts comprised solely of Glimmer/GeneMark auto-annotations, green indicates the location of called starts with at least 1 manual gene annotation.

Pham 308087 Report

This analysis was run 06/27/26 on database version 652.

Pham number 308087 has 212 members, 37 are drafts.

Phages represented in each track:

- Track 1 : Basilisk_65, Ruchi_63
- Track 2 : Jamun_62
- Track 3 : Gravel_75, Pelletreau_75
- Track 4 : Vulpecula_63
- Track 5 : Zixiang_64, Shen_62, Amanises_67
- Track 6 : Orcanus_64
- Track 7 : Chicken_64
- Track 8 : Chickaboom_65, WileyE_65
- Track 9 : Brynnie_63
- Track 10 : TaylorSipht_64
- Track 11 : Toad24_67, Westrich_73
- Track 12 : Niblet_62
- Track 13 : KendraB23_75
- Track 14 : Galaxy_64
- Track 15 : Eesa_64
- Track 16 : Bible12_74
- Track 17 : Polka_70, GramZayde_72, HannahPhantana_71, OtsoOtso_71
- Track 18 : Lunar_72, Damocles_73, Jerole_69, Kepler_74, Amelia_70, Bedetta_74, Melons_72, Coral_71, Colusalem_70
- Track 19 : Cygnet_72
- Track 20 : LittleTokyo_71
- Track 21 : Pineda_71
- Track 22 : Cote_74
- Track 23 : Antrice_74
- Track 24 : PhirstandPhine_77
- Track 25 : Daob_70
- Track 26 : Kuleana_75
- Track 27 : Laphuphu24k_67, Glotell_70, Fingolfin_70, Atlantica_69, DanHam62_69, Amphitrite_68, AmiCi24_67, Juno112_68, AdoptaAdorbs_67, HamCheese_68, Camara_68
- Track 28 : Renna12_71
- Track 29 : Rattail_70
- Track 30 : KHumphrey_69
- Track 31 : PhluffyCoco_67
- Track 32 : Azaz_70
- Track 33 : RedFox_70
- Track 34 : Babushka_65

- Track 35 : Andrew_71
- Track 36 : AlexMinion_70
- Track 37 : StuartMinion_60
- Track 38 : Oppalora_67
- Track 39 : Leona_67
- Track 40 : Pollux_80, Marteena_76
- Track 41 : Madavieve_75
- Track 42 : BoyNamedSue_77
- Track 43 : Nymphadora_79, Hugley_77
- Track 44 : Oregano_74, Suerte_69
- Track 45 : Easley_73, Beenie_69, Invecetra_78
- Track 46 : Powerball_71, Dorito_69
- Track 47 : Rizz_76
- Track 48 : Mcklovin_74
- Track 49 : Opie_72, Eyes_64, MagicMan_69, Jecs_72, Schnabeltier_70
- Track 50 : ZAYM_75
- Track 51 : PatriciaStar_64
- Track 52 : Coriander_65
- Track 53 : BackstagePass_71
- Track 54 : Chipko_69
- Track 55 : BBQValindra_66
- Track 56 : Kiko_66
- Track 57 : NaLuna_71, HannahD_69
- Track 58 : DirtyBoi_67
- Track 59 : TaronosaurusRx_74
- Track 60 : Moonflower_64
- Track 61 : Dmitri_62
- Track 62 : Bowser_66
- Track 63 : DeadP_95, Wachhund_92, Geralt_87, MulchExplorer_94, NewHope4_99, Kenuha5_87, BuzzLyseyear_101, Royals2015_97, Eish_100, BodEinwohner17_104, Spikelee_95, Peridot_97, GigiOuiOui_89, IMPilo_92, Boomer_97, Madiba_93, Galactic_95, Mahavrat_90, IbOuu_85, WillSterrel_92, DaddyRickover_96, Tweety_95, Inventum_92, Ms6_96, Enzomatic_104, DoRead_96, Hamulus_95, RitaG_93, PhlipPhlop_84, Juice456_93, Slim_97, Ovechkin_98, Florinda_106, Polka14_98, DirtMcgirt_95, Doomphist_99, Squirty_94, Girafales_103, Seagreen_95, IrishSherpFalk_94, Empress_94, Ardmore_79, UncleRicky_94, Polo2Bam_103, LittleShirley_102, Fastidio_98, KingMidas_94, Dorothy_95, Grimmer_103, Phatniss_92, Deb65_87, Emma_99, Byougenkin_92, Leperchaun_96, PMC_93, Lucia_94, Poenanya_98, RockyHorror_98, Harley_97, Nimbo_86, Enby_98, Medindi_99, Sassafras_96, Moonbeam_97, EmiMonkey_83, Hegedechwinu_101, StAnnes_98, RedBird_95, Ramsey_99, Taj_101, MilleniumForce_94, Hades_91, Scottish_94, Juniper1_88, JoeyJr_97, Filuzino_94, Kimberlium_96, OldBen_91, Emmaloid_97, SimranZ1_90, Vivum_92, GUmbie_93, Starcevich_96, DaWorst_94, Cornucopia_94, Daenerys_92, Drago_93, Jant_100, Rockne_97, CaptainTrips_96, XFactor_85, PHappiness_94, DLane_94, VRedHorse_95, Violac_96, Quico_103, Ibhubes_i_92, Stap_89, SeaLumen_100, Phalconet_95, Estave1_102, DotProduct_88, Fruitloop_92, Wee_98, Lorde_97, PhesterPhotato_98, LunaBlu_98, QuickMath_95
- Track 64 : KristaRAM_100
- Track 65 : Ogopogo_99
- Track 66 : REQ2_81
- Track 67 : Chymera_52

Summary of Final Annotations (See graph section above for start numbers):

The start number called the most often in the published annotations is 70, it was called in 110 of the 175 non-draft genes in the pham.

Genes that call this "Most Annotated" start:

- Ardmore_79, BBQValindra_66, BackstagePass_71, BodEinwohner17_104, Boomer_97, Bowser_66, BuzzLyseyear_101, Byougenkin_92, CaptainTrips_96, Chipko_69, Coriander_65, Cornucopia_94, DLane_94, DaWorst_94, DaddyRickover_96, Daenerys_92, DeadP_95, Deb65_87, DirtMcgirt_95, DirtyBoi_67, Dmitri_62, DoRead_96, Doomphist_99, Dorothy_95, DotProduct_88, Drago_93, Eish_100, EmiMonkey_83, Emma_99, Emmaloid_97, Empress_94, Enby_98, Enzomatic_104, Estave1_102, Eyes_64, Fastidio_98, Filuzino_94, Florinda_106, Fruitloop_92, GUmbe_93, Galactic_95, Geralt_87, GigiOuiOui_89, Girafales_103, Grimmer_103, Hades_91, Hamulus_95, HannahD_69, Harley_97, Hegedechwinu_101, IMpilo_92, IbOuu_85, lbhubesi_92, Inventum_92, IrishSherpFalk_94, Jant_100, Jecs_72, JoeyJr_97, Juice456_93, Juniper1_88, Kenuha5_87, Kiko_66, Kimberlium_96, KingMidas_94, KristaRAM_100, Leperchaun_96, LittleShirley_102, Lorde_97, Lucia_94, LunaBlu_98, Madiba_93, MagicMan_69, Mahavrat_90, Medindi_99, MilleniumForce_94, Moonbeam_97, Moonflower_64, Ms6_96, MulchExplorer_94, NaLuna_71, NewHope4_99, Nimbo_86, OldBen_91, Opie_72, Ovechkin_98, PHappiness_94, PMC_93, PatriciaStar_64, Peridot_97, Phalconet_95, Phatniss_92, PhesterPhotato_98, PhilipPhlop_84, Poenanya_98, Polka14_98, Polo2Bam_103, QuickMath_95, Quico_103, REQ2_81, Ramsey_99, RedBird_95, RitaG_93, Rockne_97, RockyHorror_98, Royals2015_97, Sassafra_96, Schnabeltier_70, Scottish_94, SeaLumen_100, Seagreen_95, SimranZ1_90, Slim_97, Spikelee_95, Squirty_94, StAnnes_98, Stap_89, Starcevich_96, Taj_101, TaronosaurusRx_74, Tweety_95, UncleRicky_94, VRedHorse_95, Violac_96, Vivum_92, Wachhund_92, Wee_98, WillSterrel_92, XFactor_85, ZAYM_75,

Genes that have the "Most Annotated" start but do not call it:

-

Genes that do not have the "Most Annotated" start:

- AdoptaAdorbs_67, AlexMinion_70, Amanises_67, Amelia_70, AmiCi24_67, Amphitrite_68, Andrew_71, Antrice_74, Atlantica_69, Azaz_70, Babushka_65, Basilisk_65, Bedetta_74, Beenie_69, Bible12_74, BoyNamedSue_77, Brynnie_63, Camara_68, Chickaboom_65, Chicken_64, Chymera_52, Colusalem_70, Coral_71, Cote_74, Cygnet_72, Damocles_73, DanHam62_69, Daob_70, Dorito_69, Easley_73, Eesa_64, Fingolfin_70, Galaxy_64, Glotell_70, GramZayde_72, Gravel_75, HamCheese_68, HannahPhantana_71, Hugley_77, Invecra_78, Jamun_62, Jerole_69, Juno112_68, KHumphrey_69, KendraB23_75, Kepler_74, Kuleana_75, Laphuphu24k_67, Leona_67, LittleTokyo_71, Lunar_72, Madavieve_75, Marteena_76, Mcklovin_74, Melons_72, Niblet_62, Nymphadora_79, Ogopogo_99, Oppalora_67, Orcanus_64, Oregano_74, OtsoOtso_71, Pelletreau_75, PhirstandPhine_77, PhluffyCoco_67, Pineda_71, Polka_70, Pollux_80, Powerball_71, Rattail_70, RedFox_70, Renna12_71, Rizz_76, Ruchi_63, Shen_62, StuartMinion_60, Suerte_69, TaylorSipht_64, Toad24_67, Vulpecula_63, Westrich_73, WileyE_65, Zixiang_64,

Summary by start number:

Start 35:

- Found in 1 of 212 (0.5%) of genes in pham
- Manual Annotations of this start: 1 of 175
- Called 100.0% of time when present
- Phage (with cluster) where this start called: LittleTokyo_71 (AS2),

Start 50:

- Found in 15 of 212 (7.1%) of genes in pham
- Manual Annotations of this start: 1 of 175
- Called 6.7% of time when present
- Phage (with cluster) where this start called: PhluffyCoco_67 (AS3),

Start 61:

- Found in 1 of 212 (0.5%) of genes in pham
- Manual Annotations of this start: 1 of 175
- Called 100.0% of time when present
- Phage (with cluster) where this start called: Andrew_71 (AS3),

Start 63:

- Found in 3 of 212 (1.4%) of genes in pham
- No Manual Annotations of this start.
- Called 33.3% of time when present
- Phage (with cluster) where this start called: AlexMinion_70 (AS3),

Start 66:

- Found in 2 of 212 (0.9%) of genes in pham
- Manual Annotations of this start: 2 of 175
- Called 100.0% of time when present
- Phage (with cluster) where this start called: Chymera_52 (singleton), Ogoopogo_99 (F1),

Start 68:

- Found in 4 of 212 (1.9%) of genes in pham
- Manual Annotations of this start: 1 of 175
- Called 25.0% of time when present
- Phage (with cluster) where this start called: Babushka_65 (AS3),

Start 69:

- Found in 4 of 212 (1.9%) of genes in pham
- Manual Annotations of this start: 3 of 175
- Called 75.0% of time when present
- Phage (with cluster) where this start called: Azaz_70 (AS3), Leona_67 (AS3), Renna12_71 (AS3),

Start 70:

- Found in 129 of 212 (60.8%) of genes in pham
- Manual Annotations of this start: 110 of 175
- Called 100.0% of time when present
- Phage (with cluster) where this start called: Ardmore_79 (F1), BBQValindra_66 (DB), BackstagePass_71 (DB), BodEinwohner17_104 (F1), Boomer_97 (F1), Bowser_66 (DB), BuzzLyseyear_101 (F1), Byougenkin_92 (F1), CaptainTrips_96 (F1), Chipko_69 (DB), Coriander_65 (DB), Cornucopia_94 (F1), DLane_94 (F1),

DaWorst_94 (F1), DaddyRickover_96 (F1), Daenerys_92 (F1), DeadP_95 (F1), Deb65_87 (F1), DirtMcgirt_95 (F1), DirtyBoi_67 (DB), Dmitri_62 (DB), DoRead_96 (F1), Doomphist_99 (F1), Dorothy_95 (F1), DotProduct_88 (F1), Drago_93 (F1), Eish_100 (F1), EmiMonkey_83 (F1), Emma_99 (F1), Emmaloid_97 (F1), Empress_94 (F1), Enby_98 (F1), Enzomatic_104 (F1), Estave1_102 (F1), Eyes_64 (DB), Fastidio_98 (F1), Filuzino_94 (F1), Florinda_106 (F1), Fruitloop_92 (F1), GUmbie_93 (F1), Galactic_95 (F1), Geralt_87 (F1), GigiOuiOui_89 (F1), Girafales_103 (F1), Grimmer_103 (F1), Hades_91 (F1), Hamulus_95 (F1), HannahD_69 (DB), Harley_97 (F1), Hegedechwinu_101 (F1), IMpilo_92 (F1), IbOuu_85 (F1), Ibhubesi_92 (F1), Inventum_92 (F1), IrishSherpFalk_94 (F1), Jant_100 (F1), Jecs_72 (DB), JoeyJr_97 (F1), Juice456_93 (F1), Juniper1_88 (F1), Kenuha5_87 (F1), Kiko_66 (DB), Kimberlium_96 (F1), KingMidas_94 (F1), KristaRAM_100 (F1), Leperchaun_96 (F1), LittleShirley_102 (F1), Lorde_97 (F1), Lucia_94 (F1), LunaBlu_98 (F1), Madiba_93 (F1), MagicMan_69 (DB), Mahavrat_90 (F1), Medindi_99 (F1), MilleniumForce_94 (F1), Moonbeam_97 (F1), Moonflower_64 (DB), Ms6_96 (F1), MulchExplorer_94 (F1), NaLuna_71 (DB), NewHope4_99 (F1), Nimbo_86 (F1), OldBen_91 (F1), Opie_72 (DB), Ovechkin_98 (F1), PHappiness_94 (F1), PMC_93 (F1), PatriciaStar_64 (DB), Peridot_97 (F1), Phalconet_95 (F1), Phatniss_92 (F1), PhesterPhotato_98 (F1), PhilipPhlop_84 (F1), Poenanya_98 (F1), Polka14_98 (F1), Polo2Bam_103 (F1), QuickMath_95 (F1), Quico_103 (F1), REQ2_81 (singleton), Ramsey_99 (F1), RedBird_95 (F1), RitaG_93 (F1), Rockne_97 (F1), RockyHorror_98 (F1), Royals2015_97 (F1), Sassafras_96 (F1), Schnabeltier_70 (DB), Scottish_94 (F1), SeaLumen_100 (F1), Seagreen_95 (F1), SimranZ1_90 (F1), Slim_97 (F1), Spikelee_95 (F1), Squirty_94 (F3), StAnnes_98 (F1), Stap_89 (F1), Starcevich_96 (F1), Taj_101 (F1), TaronosaurusRx_74 (DB), Tweety_95 (F1), UncleRicky_94 (F1), VRedHorse_95 (F1), Violac_96 (F1), Vivum_92 (F1), Wachhund_92 (F1), Wee_98 (F1), WillSterrel_92 (F1), XFactor_85 (F1), ZAYM_75 (DB),

Start 71:

- Found in 10 of 212 (4.7%) of genes in pham
- Manual Annotations of this start: 8 of 175
- Called 100.0% of time when present
- Phage (with cluster) where this start called: Beenie_69 (CZ4), BoyNamedSue_77 (CZ1), Easley_73 (CZ4), Hugley_77 (CZ1), Invecetra_78 (CZ4), Madavieve_75 (CZ1), Marteena_76 (CY1), Mcklovlin_74 (CZ4), Nymphadora_79 (CZ1), Pollux_80 (CY1),

Start 74:

- Found in 19 of 212 (9.0%) of genes in pham
- Manual Annotations of this start: 13 of 175
- Called 94.7% of time when present
- Phage (with cluster) where this start called: Amelia_70 (AS2), Bedetta_74 (AS2), Bible12_74 (AS2), Colusalem_70 (AS2), Coral_71 (AS2), Cote_74 (AS2), Damocles_73 (AS2), Daob_70 (AS2), GramZayde_72 (AS2), HannahPhantana_71 (AS2), Jerole_69 (AS2), Kepler_74 (AS2), Lunar_72 (AS2), Melons_72 (AS2), OtsoOtso_71 (AS2), PhirstandPhine_77 (AS2), Pineda_71 (AS2), Polka_70 (AS2),

Start 75:

- Found in 2 of 212 (0.9%) of genes in pham
- Manual Annotations of this start: 1 of 175
- Called 50.0% of time when present
- Phage (with cluster) where this start called: Kuleana_75 (AS2),

Start 76:

- Found in 2 of 212 (0.9%) of genes in pham
- Manual Annotations of this start: 1 of 175
- Called 100.0% of time when present
- Phage (with cluster) where this start called: Toad24_67 (AS1), Westrich_73 (AS1),

Start 77:

- Found in 1 of 212 (0.5%) of genes in pham
- Manual Annotations of this start: 1 of 175
- Called 100.0% of time when present
- Phage (with cluster) where this start called: Antrice_74 (AS2),

Start 78:

- Found in 2 of 212 (0.9%) of genes in pham
- Manual Annotations of this start: 1 of 175
- Called 50.0% of time when present
- Phage (with cluster) where this start called: Vulpecula_63 (AS1),

Start 80:

- Found in 12 of 212 (5.7%) of genes in pham
- Manual Annotations of this start: 5 of 175
- Called 50.0% of time when present
- Phage (with cluster) where this start called: Dorito_69 (CZ4), Niblet_62 (AS1), Oregano_74 (CZ4), Powerball_71 (CZ4), Rizz_76 (CZ4), Suerte_69 (CZ4),

Start 81:

- Found in 8 of 212 (3.8%) of genes in pham
- Manual Annotations of this start: 4 of 175
- Called 100.0% of time when present
- Phage (with cluster) where this start called: Amanises_67 (AS1), Eesa_64 (AS1), Gravel_75 (AS1), KendraB23_75 (AS1), Orcanus_64 (AS1), Pelletreau_75 (AS1), Shen_62 (AS1), Zixiang_64 (AS1),

Start 82:

- Found in 36 of 212 (17.0%) of genes in pham
- Manual Annotations of this start: 20 of 175
- Called 66.7% of time when present
- Phage (with cluster) where this start called: AdoptaAdorbs_67 (AS3), AmiCi24_67 (AS3), Amphitrite_68 (AS3), Atlantica_69 (AS3), Basilisk_65 (AS1), Camara_68 (AS3), Chickaboom_65 (AS1), Chicken_64 (AS1), Cygnet_72 (AS2), DanHam62_69 (AS3), Fingolfin_70 (AS3), Galaxy_64 (AS1), Glotell_70 (AS3), HamCheese_68 (AS3), Juno112_68 (AS3), KHumphrey_69 (AS3), Laphuphu24k_67 (AS3), Oppalora_67 (AS3), Rattail_70 (AS3), RedFox_70 (AS3), Ruchi_63 (AS1), StuartMinion_60 (AS3), TaylorSipht_64 (AS1), WileyE_65 (AS1),

Start 90:

- Found in 48 of 212 (22.6%) of genes in pham
- Manual Annotations of this start: 2 of 175
- Called 4.2% of time when present
- Phage (with cluster) where this start called: Brynnie_63 (AS1), Jamun_62 (AS1),

Summary by clusters:

There are 10 clusters represented in this pham: AS3, F1, AS1, F3, AS2, CZ1, DB, singleton, CZ4, CY1,

Info for manual annotations of cluster AS1:

- Start number 76 was manually annotated 1 time for cluster AS1.
- Start number 78 was manually annotated 1 time for cluster AS1.
- Start number 80 was manually annotated 1 time for cluster AS1.
- Start number 81 was manually annotated 4 times for cluster AS1.
- Start number 82 was manually annotated 7 times for cluster AS1.
- Start number 90 was manually annotated 2 times for cluster AS1.

Info for manual annotations of cluster AS2:

- Start number 35 was manually annotated 1 time for cluster AS2.
- Start number 74 was manually annotated 13 times for cluster AS2.
- Start number 75 was manually annotated 1 time for cluster AS2.
- Start number 77 was manually annotated 1 time for cluster AS2.
- Start number 82 was manually annotated 1 time for cluster AS2.

Info for manual annotations of cluster AS3:

- Start number 50 was manually annotated 1 time for cluster AS3.
- Start number 61 was manually annotated 1 time for cluster AS3.
- Start number 68 was manually annotated 1 time for cluster AS3.
- Start number 69 was manually annotated 3 times for cluster AS3.
- Start number 82 was manually annotated 12 times for cluster AS3.

Info for manual annotations of cluster CY1:

- Start number 71 was manually annotated 2 times for cluster CY1.

Info for manual annotations of cluster CZ1:

- Start number 71 was manually annotated 2 times for cluster CZ1.

Info for manual annotations of cluster CZ4:

- Start number 71 was manually annotated 4 times for cluster CZ4.
- Start number 80 was manually annotated 4 times for cluster CZ4.

Info for manual annotations of cluster DB:

- Start number 70 was manually annotated 12 times for cluster DB.

Info for manual annotations of cluster F1:

- Start number 66 was manually annotated 1 time for cluster F1.
- Start number 70 was manually annotated 97 times for cluster F1.

Info for manual annotations of cluster F3:

- Start number 70 was manually annotated 1 time for cluster F3.

Gene Information:

Gene: AdoptaAdorbs_67 Start: 37524, Stop: 37748, Start Num: 82

Candidate Starts for AdoptaAdorbs_67:

(Start: 50 @37452 has 1 MA's), (Start: 82 @37524 has 20 MA's), (Start: 90 @37551 has 2 MA's), (95, 37584), (97, 37599), (108, 37671), (111, 37689), (112, 37701), (116, 37728),

Gene: AlexMinion_70 Start: 37426, Stop: 37698, Start Num: 63

Candidate Starts for AlexMinion_70:

(45, 37390), (56, 37417), (63, 37426), (Start: 68 @37444 has 1 MA's), (Start: 82 @37474 has 20 MA's), (Start: 90 @37501 has 2 MA's), (95, 37534), (97, 37549), (108, 37621), (111, 37639), (112, 37651), (116, 37678),

Gene: Amanises_67 Start: 39009, Stop: 39209, Start Num: 81

Candidate Starts for Amanises_67:

(16, 38820), (21, 38853), (39, 38907), (52, 38937), (59, 38955), (Start: 81 @39009 has 4 MA's), (Start: 90 @39036 has 2 MA's), (93, 39063), (100, 39108), (106, 39144), (110, 39165),

Gene: Amelia_70 Start: 37346, Stop: 37591, Start Num: 74

Candidate Starts for Amelia_70:

(42, 37262), (Start: 74 @37346 has 13 MA's), (85, 37373), (87, 37382), (89, 37385), (93, 37415), (95, 37421), (102, 37466), (105, 37481), (111, 37532), (116, 37571),

Gene: AmiCi24_67 Start: 37633, Stop: 37857, Start Num: 82

Candidate Starts for AmiCi24_67:

(Start: 50 @37561 has 1 MA's), (Start: 82 @37633 has 20 MA's), (Start: 90 @37660 has 2 MA's), (95, 37693), (97, 37708), (108, 37780), (111, 37798), (112, 37810), (116, 37837),

Gene: Amphitrite_68 Start: 37538, Stop: 37762, Start Num: 82

Candidate Starts for Amphitrite_68:

(Start: 50 @37466 has 1 MA's), (Start: 82 @37538 has 20 MA's), (Start: 90 @37565 has 2 MA's), (95, 37598), (97, 37613), (108, 37685), (111, 37703), (112, 37715), (116, 37742),

Gene: Andrew_71 Start: 37949, Stop: 38230, Start Num: 61

Candidate Starts for Andrew_71:

(Start: 61 @37949 has 1 MA's), (Start: 75 @37994 has 1 MA's), (79, 38003), (Start: 90 @38033 has 2 MA's), (94, 38063), (95, 38066), (97, 38081), (102, 38111), (104, 38117), (108, 38153), (116, 38210),

Gene: Antrice_74 Start: 38347, Stop: 38604, Start Num: 77

Candidate Starts for Antrice_74:

(Start: 77 @38347 has 1 MA's), (86, 38371), (87, 38374), (89, 38377), (Start: 90 @38380 has 2 MA's), (95, 38413), (97, 38428), (101, 38455), (102, 38458), (110, 38509), (118, 38575),

Gene: Ardmore_79 Start: 47310, Stop: 47534, Start Num: 70

Candidate Starts for Ardmore_79:

(Start: 70 @47310 has 110 MA's), (98, 47409),

Gene: Atlantica_69 Start: 37635, Stop: 37859, Start Num: 82

Candidate Starts for Atlantica_69:

(Start: 50 @37563 has 1 MA's), (Start: 82 @37635 has 20 MA's), (Start: 90 @37662 has 2 MA's), (95, 37695), (97, 37710), (108, 37782), (111, 37800), (112, 37812), (116, 37839),

Gene: Azaz_70 Start: 37771, Stop: 38022, Start Num: 69

Candidate Starts for Azaz_70:

(21, 37645), (25, 37669), (36, 37693), (53, 37729), (54, 37735), (Start: 69 @37771 has 3 MA's), (Start: 82 @37798 has 20 MA's), (Start: 90 @37825 has 2 MA's), (95, 37858), (97, 37873), (108, 37945), (111, 37963), (112, 37975), (116, 38002),

Gene: BBQValindra_66 Start: 46200, Stop: 46448, Start Num: 70

Candidate Starts for BBQValindra_66:

(46, 46137), (Start: 70 @46200 has 110 MA's), (97, 46296), (101, 46350), (104, 46359), (110, 46404),

Gene: Babushka_65 Start: 37513, Stop: 37767, Start Num: 68

Candidate Starts for Babushka_65:

(12, 37303), (24, 37411), (27, 37417), (36, 37438), (40, 37447), (43, 37456), (59, 37489), (Start: 68 @37513 has 1 MA's), (Start: 82 @37543 has 20 MA's), (Start: 90 @37570 has 2 MA's), (95, 37603), (97, 37618), (112, 37720), (116, 37747),

Gene: BackstagePass_71 Start: 45548, Stop: 45796, Start Num: 70

Candidate Starts for BackstagePass_71:

(46, 45485), (Start: 70 @45548 has 110 MA's), (97, 45644), (101, 45698), (104, 45707),

Gene: Basilisk_65 Start: 37815, Stop: 38027, Start Num: 82

Candidate Starts for Basilisk_65:

(16, 37620), (58, 37752), (Start: 82 @37815 has 20 MA's), (Start: 90 @37842 has 2 MA's), (91, 37851), (100, 37914), (110, 37971), (112, 37992),

Gene: Bedetta_74 Start: 37509, Stop: 37754, Start Num: 74

Candidate Starts for Bedetta_74:

(42, 37425), (Start: 74 @37509 has 13 MA's), (85, 37536), (87, 37545), (89, 37548), (93, 37578), (95, 37584), (102, 37629), (105, 37644), (111, 37695), (116, 37734),

Gene: Beenie_69 Start: 46326, Stop: 46541, Start Num: 71

Candidate Starts for Beenie_69:

(3, 45720), (4, 45735), (7, 45951), (8, 45957), (10, 46023), (11, 46059), (29, 46215), (34, 46230), (49, 46263), (60, 46290), (Start: 71 @46326 has 8 MA's), (97, 46416), (99, 46428), (108, 46488),

Gene: Bible12_74 Start: 37919, Stop: 38164, Start Num: 74

Candidate Starts for Bible12_74:

(37, 37838), (53, 37871), (65, 37904), (Start: 74 @37919 has 13 MA's), (85, 37946), (87, 37955), (89, 37958), (93, 37988), (95, 37994), (102, 38039), (105, 38054), (116, 38144),

Gene: BodEinwohner17_104 Start: 55362, Stop: 55586, Start Num: 70

Candidate Starts for BodEinwohner17_104:

(Start: 70 @55362 has 110 MA's), (98, 55461),

Gene: Boomer_97 Start: 53595, Stop: 53819, Start Num: 70

Candidate Starts for Boomer_97:

(Start: 70 @53595 has 110 MA's), (98, 53694),

Gene: Bowser_66 Start: 45894, Stop: 46142, Start Num: 70

Candidate Starts for Bowser_66:

(46, 45828), (Start: 70 @45894 has 110 MA's), (97, 45990), (103, 46050), (104, 46053),

Gene: BoyNamedSue_77 Start: 50965, Stop: 51180, Start Num: 71

Candidate Starts for BoyNamedSue_77:

(10, 50662), (11, 50698), (29, 50854), (34, 50869), (49, 50902), (Start: 71 @50965 has 8 MA's), (95, 51040), (97, 51055), (99, 51067),

Gene: Brynnie_63 Start: 37788, Stop: 37973, Start Num: 90

Candidate Starts for Brynnie_63:

(Start: 78 @37755 has 1 MA's), (Start: 90 @37788 has 2 MA's), (91, 37797), (100, 37860), (110, 37917), (112, 37938),

Gene: BuzzLyseyear_101 Start: 55092, Stop: 55316, Start Num: 70
Candidate Starts for BuzzLyseyear_101:
(Start: 70 @55092 has 110 MA's), (98, 55191),

Gene: Byougenkin_92 Start: 49932, Stop: 50156, Start Num: 70
Candidate Starts for Byougenkin_92:
(Start: 70 @49932 has 110 MA's), (98, 50031),

Gene: Camara_68 Start: 37526, Stop: 37750, Start Num: 82
Candidate Starts for Camara_68:
(Start: 50 @37454 has 1 MA's), (Start: 82 @37526 has 20 MA's), (Start: 90 @37553 has 2 MA's), (95, 37586), (97, 37601), (108, 37673), (111, 37691), (112, 37703), (116, 37730),

Gene: CaptainTrips_96 Start: 52498, Stop: 52722, Start Num: 70
Candidate Starts for CaptainTrips_96:
(Start: 70 @52498 has 110 MA's), (98, 52597),

Gene: Chickaboom_65 Start: 37923, Stop: 38135, Start Num: 82
Candidate Starts for Chickaboom_65:
(48, 37848), (60, 37875), (67, 37896), (Start: 80 @37920 has 5 MA's), (Start: 82 @37923 has 20 MA's), (85, 37935), (Start: 90 @37950 has 2 MA's), (91, 37959), (100, 38022), (110, 38079), (112, 38100),

Gene: Chicken_64 Start: 38731, Stop: 38931, Start Num: 82
Candidate Starts for Chicken_64:
(Start: 80 @38728 has 5 MA's), (Start: 82 @38731 has 20 MA's), (Start: 90 @38758 has 2 MA's), (92, 38779), (93, 38785), (100, 38830), (106, 38866),

Gene: Chipko_69 Start: 44960, Stop: 45208, Start Num: 70
Candidate Starts for Chipko_69:
(31, 44861), (Start: 70 @44960 has 110 MA's), (Start: 80 @44975 has 5 MA's), (96, 45047), (108, 45152), (110, 45161),

Gene: Chymera_52 Start: 33565, Stop: 33825, Start Num: 66
Candidate Starts for Chymera_52:
(Start: 66 @33565 has 2 MA's), (107, 33724),

Gene: Colusalem_70 Start: 37323, Stop: 37568, Start Num: 74
Candidate Starts for Colusalem_70:
(42, 37239), (Start: 74 @37323 has 13 MA's), (85, 37350), (87, 37359), (89, 37362), (93, 37392), (95, 37398), (102, 37443), (105, 37458), (111, 37509), (116, 37548),

Gene: Coral_71 Start: 37538, Stop: 37783, Start Num: 74
Candidate Starts for Coral_71:
(42, 37454), (Start: 74 @37538 has 13 MA's), (85, 37565), (87, 37574), (89, 37577), (93, 37607), (95, 37613), (102, 37658), (105, 37673), (111, 37724), (116, 37763),

Gene: Coriander_65 Start: 43545, Stop: 43793, Start Num: 70
Candidate Starts for Coriander_65:
(Start: 70 @43545 has 110 MA's), (Start: 80 @43560 has 5 MA's), (96, 43632), (108, 43737), (110, 43746),

Gene: Cornucopia_94 Start: 50874, Stop: 51098, Start Num: 70

Candidate Starts for Cornucopia_94:

(Start: 70 @50874 has 110 MA's), (98, 50973),

Gene: Cote_74 Start: 38262, Stop: 38507, Start Num: 74

Candidate Starts for Cote_74:

(37, 38181), (53, 38214), (65, 38247), (Start: 74 @38262 has 13 MA's), (85, 38289), (87, 38298), (89, 38301), (93, 38331), (95, 38337), (102, 38382), (105, 38397), (111, 38448), (116, 38487),

Gene: Cygnet_72 Start: 38655, Stop: 38879, Start Num: 82

Candidate Starts for Cygnet_72:

(45, 38574), (56, 38601), (63, 38610), (Start: 68 @38628 has 1 MA's), (Start: 82 @38655 has 20 MA's), (86, 38673), (89, 38679), (Start: 90 @38682 has 2 MA's), (95, 38715), (97, 38730), (108, 38802), (111, 38820), (112, 38832), (116, 38859),

Gene: DLane_94 Start: 53780, Stop: 54004, Start Num: 70

Candidate Starts for DLane_94:

(Start: 70 @53780 has 110 MA's), (98, 53879),

Gene: DaWorst_94 Start: 52690, Stop: 52914, Start Num: 70

Candidate Starts for DaWorst_94:

(Start: 70 @52690 has 110 MA's), (98, 52789),

Gene: DaddyRickover_96 Start: 53556, Stop: 53780, Start Num: 70

Candidate Starts for DaddyRickover_96:

(Start: 70 @53556 has 110 MA's), (98, 53655),

Gene: Daenerys_92 Start: 53725, Stop: 53949, Start Num: 70

Candidate Starts for Daenerys_92:

(Start: 70 @53725 has 110 MA's), (98, 53824),

Gene: Damocles_73 Start: 37482, Stop: 37727, Start Num: 74

Candidate Starts for Damocles_73:

(42, 37398), (Start: 74 @37482 has 13 MA's), (85, 37509), (87, 37518), (89, 37521), (93, 37551), (95, 37557), (102, 37602), (105, 37617), (111, 37668), (116, 37707),

Gene: DanHam62_69 Start: 37634, Stop: 37858, Start Num: 82

Candidate Starts for DanHam62_69:

(Start: 50 @37562 has 1 MA's), (Start: 82 @37634 has 20 MA's), (Start: 90 @37661 has 2 MA's), (95, 37694), (97, 37709), (108, 37781), (111, 37799), (112, 37811), (116, 37838),

Gene: Daob_70 Start: 37188, Stop: 37433, Start Num: 74

Candidate Starts for Daob_70:

(13, 36969), (14, 36978), (17, 37014), (18, 37035), (20, 37044), (Start: 74 @37188 has 13 MA's), (85, 37215), (87, 37224), (89, 37227), (93, 37257), (95, 37263), (102, 37308), (105, 37323), (116, 37413),

Gene: DeadP_95 Start: 51561, Stop: 51785, Start Num: 70

Candidate Starts for DeadP_95:

(Start: 70 @51561 has 110 MA's), (98, 51660),

Gene: Deb65_87 Start: 51449, Stop: 51673, Start Num: 70

Candidate Starts for Deb65_87:

(Start: 70 @51449 has 110 MA's), (98, 51548),

Gene: DirtMcgirt_95 Start: 50205, Stop: 50429, Start Num: 70

Candidate Starts for DirtMcgirt_95:

(Start: 70 @50205 has 110 MA's), (98, 50304),

Gene: DirtyBoi_67 Start: 43186, Stop: 43434, Start Num: 70

Candidate Starts for DirtyBoi_67:

(31, 43087), (Start: 70 @43186 has 110 MA's), (96, 43273),

Gene: Dmitri_62 Start: 45089, Stop: 45337, Start Num: 70

Candidate Starts for Dmitri_62:

(31, 44990), (Start: 70 @45089 has 110 MA's), (96, 45176), (103, 45242),

Gene: DoRead_96 Start: 51020, Stop: 51244, Start Num: 70

Candidate Starts for DoRead_96:

(Start: 70 @51020 has 110 MA's), (98, 51119),

Gene: Doomphist_99 Start: 54376, Stop: 54600, Start Num: 70

Candidate Starts for Doomphist_99:

(Start: 70 @54376 has 110 MA's), (98, 54475),

Gene: Dorito_69 Start: 44511, Stop: 44738, Start Num: 80

Candidate Starts for Dorito_69:

(Start: 80 @44511 has 5 MA's), (83, 44517), (95, 44574), (108, 44661),

Gene: Dorothy_95 Start: 54545, Stop: 54769, Start Num: 70

Candidate Starts for Dorothy_95:

(Start: 70 @54545 has 110 MA's), (98, 54644),

Gene: DotProduct_88 Start: 50563, Stop: 50787, Start Num: 70

Candidate Starts for DotProduct_88:

(Start: 70 @50563 has 110 MA's), (98, 50662),

Gene: Drago_93 Start: 50208, Stop: 50432, Start Num: 70

Candidate Starts for Drago_93:

(Start: 70 @50208 has 110 MA's), (98, 50307),

Gene: Easley_73 Start: 45090, Stop: 45305, Start Num: 71

Candidate Starts for Easley_73:

(3, 44484), (4, 44499), (7, 44715), (8, 44721), (10, 44787), (11, 44823), (29, 44979), (34, 44994), (49, 45027), (60, 45054), (Start: 71 @45090 has 8 MA's), (97, 45180), (99, 45192), (108, 45252),

Gene: Eesa_64 Start: 39050, Stop: 39250, Start Num: 81

Candidate Starts for Eesa_64:

(16, 38861), (21, 38894), (39, 38948), (52, 38978), (59, 38996), (Start: 81 @39050 has 4 MA's), (Start: 90 @39077 has 2 MA's), (93, 39104), (97, 39125), (100, 39149), (106, 39185), (110, 39206),

Gene: Eish_100 Start: 54009, Stop: 54233, Start Num: 70

Candidate Starts for Eish_100:

(Start: 70 @54009 has 110 MA's), (98, 54108),

Gene: EmiMonkey_83 Start: 54212, Stop: 54436, Start Num: 70

Candidate Starts for EmiMonkey_83:
(Start: 70 @54212 has 110 MA's), (98, 54311),

Gene: Emma_99 Start: 52064, Stop: 52288, Start Num: 70
Candidate Starts for Emma_99:
(Start: 70 @52064 has 110 MA's), (98, 52163),

Gene: Emmaloid_97 Start: 52984, Stop: 53208, Start Num: 70
Candidate Starts for Emmaloid_97:
(Start: 70 @52984 has 110 MA's), (98, 53083),

Gene: Empress_94 Start: 52639, Stop: 52863, Start Num: 70
Candidate Starts for Empress_94:
(Start: 70 @52639 has 110 MA's), (98, 52738),

Gene: Enby_98 Start: 50484, Stop: 50708, Start Num: 70
Candidate Starts for Enby_98:
(Start: 70 @50484 has 110 MA's), (98, 50583),

Gene: Enzomatic_104 Start: 51645, Stop: 51869, Start Num: 70
Candidate Starts for Enzomatic_104:
(Start: 70 @51645 has 110 MA's), (98, 51744),

Gene: Estave1_102 Start: 56371, Stop: 56595, Start Num: 70
Candidate Starts for Estave1_102:
(Start: 70 @56371 has 110 MA's), (98, 56470),

Gene: Eyes_64 Start: 46097, Stop: 46345, Start Num: 70
Candidate Starts for Eyes_64:
(46, 46034), (Start: 70 @46097 has 110 MA's), (97, 46193), (103, 46253), (104, 46256),

Gene: Fastidio_98 Start: 50955, Stop: 51179, Start Num: 70
Candidate Starts for Fastidio_98:
(Start: 70 @50955 has 110 MA's), (98, 51054),

Gene: Filuzino_94 Start: 54475, Stop: 54699, Start Num: 70
Candidate Starts for Filuzino_94:
(Start: 70 @54475 has 110 MA's), (98, 54574),

Gene: Fingolfin_70 Start: 37637, Stop: 37861, Start Num: 82
Candidate Starts for Fingolfin_70:
(Start: 50 @37565 has 1 MA's), (Start: 82 @37637 has 20 MA's), (Start: 90 @37664 has 2 MA's), (95, 37697), (97, 37712), (108, 37784), (111, 37802), (112, 37814), (116, 37841),

Gene: Florinda_106 Start: 54860, Stop: 55084, Start Num: 70
Candidate Starts for Florinda_106:
(Start: 70 @54860 has 110 MA's), (98, 54959),

Gene: Fruitloop_92 Start: 53617, Stop: 53841, Start Num: 70
Candidate Starts for Fruitloop_92:
(Start: 70 @53617 has 110 MA's), (98, 53716),

Gene: GUmbie_93 Start: 52577, Stop: 52801, Start Num: 70

Candidate Starts for GUmbie_93:
(Start: 70 @52577 has 110 MA's), (98, 52676),

Gene: Galactic_95 Start: 52179, Stop: 52403, Start Num: 70
Candidate Starts for Galactic_95:
(Start: 70 @52179 has 110 MA's), (98, 52278),

Gene: Galaxy_64 Start: 36960, Stop: 37175, Start Num: 82
Candidate Starts for Galaxy_64:
(16, 36777), (21, 36810), (Start: 82 @36960 has 20 MA's), (88, 36984), (Start: 90 @36990 has 2 MA's),
(91, 36999), (100, 37062), (107, 37101), (110, 37119), (112, 37140),

Gene: Geralt_87 Start: 51447, Stop: 51671, Start Num: 70
Candidate Starts for Geralt_87:
(Start: 70 @51447 has 110 MA's), (98, 51546),

Gene: GigiOuiOui_89 Start: 51580, Stop: 51804, Start Num: 70
Candidate Starts for GigiOuiOui_89:
(Start: 70 @51580 has 110 MA's), (98, 51679),

Gene: Girafales_103 Start: 54465, Stop: 54689, Start Num: 70
Candidate Starts for Girafales_103:
(Start: 70 @54465 has 110 MA's), (98, 54564),

Gene: Glotell_70 Start: 37681, Stop: 37905, Start Num: 82
Candidate Starts for Glotell_70:
(Start: 50 @37609 has 1 MA's), (Start: 82 @37681 has 20 MA's), (Start: 90 @37708 has 2 MA's), (95,
37741), (97, 37756), (108, 37828), (111, 37846), (112, 37858), (116, 37885),

Gene: GramZayde_72 Start: 38034, Stop: 38279, Start Num: 74
Candidate Starts for GramZayde_72:
(42, 37950), (Start: 74 @38034 has 13 MA's), (85, 38061), (87, 38070), (89, 38073), (93, 38103), (95,
38109), (102, 38154), (105, 38169), (116, 38259),

Gene: Gravel_75 Start: 39306, Stop: 39506, Start Num: 81
Candidate Starts for Gravel_75:
(16, 39117), (21, 39150), (39, 39204), (52, 39234), (59, 39252), (Start: 81 @39306 has 4 MA's), (Start:
90 @39333 has 2 MA's), (93, 39360), (97, 39381), (102, 39411), (106, 39441), (110, 39462),

Gene: Grimmer_103 Start: 53161, Stop: 53385, Start Num: 70
Candidate Starts for Grimmer_103:
(Start: 70 @53161 has 110 MA's), (98, 53260),

Gene: Hades_91 Start: 50166, Stop: 50390, Start Num: 70
Candidate Starts for Hades_91:
(Start: 70 @50166 has 110 MA's), (98, 50265),

Gene: HamCheese_68 Start: 37621, Stop: 37845, Start Num: 82
Candidate Starts for HamCheese_68:
(Start: 50 @37549 has 1 MA's), (Start: 82 @37621 has 20 MA's), (Start: 90 @37648 has 2 MA's), (95,
37681), (97, 37696), (108, 37768), (111, 37786), (112, 37798), (116, 37825),

Gene: Hamulus_95 Start: 52528, Stop: 52752, Start Num: 70

Candidate Starts for Hamulus_95:
(Start: 70 @52528 has 110 MA's), (98, 52627),

Gene: HannahD_69 Start: 45420, Stop: 45668, Start Num: 70
Candidate Starts for HannahD_69:
(46, 45357), (Start: 70 @45420 has 110 MA's), (95, 45501), (97, 45516), (101, 45570), (104, 45579),

Gene: HannahPhantana_71 Start: 37341, Stop: 37586, Start Num: 74
Candidate Starts for HannahPhantana_71:
(42, 37257), (Start: 74 @37341 has 13 MA's), (85, 37368), (87, 37377), (89, 37380), (93, 37410), (95, 37416), (102, 37461), (105, 37476), (116, 37566),

Gene: Harley_97 Start: 53710, Stop: 53934, Start Num: 70
Candidate Starts for Harley_97:
(Start: 70 @53710 has 110 MA's), (98, 53809),

Gene: Hegedechwinu_101 Start: 52838, Stop: 53062, Start Num: 70
Candidate Starts for Hegedechwinu_101:
(Start: 70 @52838 has 110 MA's), (98, 52937),

Gene: Hugley_77 Start: 52070, Stop: 52285, Start Num: 71
Candidate Starts for Hugley_77:
(1, 51236), (2, 51248), (3, 51464), (4, 51479), (5, 51509), (6, 51689), (7, 51695), (8, 51701), (11, 51803), (29, 51959), (34, 51974), (49, 52007), (Start: 71 @52070 has 8 MA's), (95, 52145), (97, 52160), (99, 52172),

Gene: IMpilo_92 Start: 51182, Stop: 51406, Start Num: 70
Candidate Starts for IMpilo_92:
(Start: 70 @51182 has 110 MA's), (98, 51281),

Gene: IbOuu_85 Start: 50477, Stop: 50701, Start Num: 70
Candidate Starts for IbOuu_85:
(Start: 70 @50477 has 110 MA's), (98, 50576),

Gene: Ibhubesi_92 Start: 50579, Stop: 50803, Start Num: 70
Candidate Starts for Ibhubesi_92:
(Start: 70 @50579 has 110 MA's), (98, 50678),

Gene: Invectra_78 Start: 47662, Stop: 47877, Start Num: 71
Candidate Starts for Invectra_78:
(3, 47056), (4, 47071), (7, 47287), (8, 47293), (10, 47359), (11, 47395), (29, 47551), (34, 47566), (49, 47599), (60, 47626), (Start: 71 @47662 has 8 MA's), (97, 47752), (99, 47764), (108, 47824),

Gene: Inventum_92 Start: 52733, Stop: 52957, Start Num: 70
Candidate Starts for Inventum_92:
(Start: 70 @52733 has 110 MA's), (98, 52832),

Gene: IrishSherpFalk_94 Start: 53004, Stop: 53228, Start Num: 70
Candidate Starts for IrishSherpFalk_94:
(Start: 70 @53004 has 110 MA's), (98, 53103),

Gene: Jamun_62 Start: 38028, Stop: 38213, Start Num: 90
Candidate Starts for Jamun_62:

(16, 37818), (Start: 82 @38001 has 20 MA's), (Start: 90 @38028 has 2 MA's), (100, 38100), (110, 38157), (112, 38178),

Gene: Jant_100 Start: 52288, Stop: 52512, Start Num: 70

Candidate Starts for Jant_100:

(Start: 70 @52288 has 110 MA's), (98, 52387),

Gene: Jecs_72 Start: 47614, Stop: 47862, Start Num: 70

Candidate Starts for Jecs_72:

(46, 47551), (Start: 70 @47614 has 110 MA's), (97, 47710), (103, 47770), (104, 47773),

Gene: Jerole_69 Start: 37465, Stop: 37710, Start Num: 74

Candidate Starts for Jerole_69:

(42, 37381), (Start: 74 @37465 has 13 MA's), (85, 37492), (87, 37501), (89, 37504), (93, 37534), (95, 37540), (102, 37585), (105, 37600), (111, 37651), (116, 37690),

Gene: JoeyJr_97 Start: 54641, Stop: 54865, Start Num: 70

Candidate Starts for JoeyJr_97:

(Start: 70 @54641 has 110 MA's), (98, 54740),

Gene: Juice456_93 Start: 52353, Stop: 52577, Start Num: 70

Candidate Starts for Juice456_93:

(Start: 70 @52353 has 110 MA's), (98, 52452),

Gene: Juniper1_88 Start: 51701, Stop: 51925, Start Num: 70

Candidate Starts for Juniper1_88:

(Start: 70 @51701 has 110 MA's), (98, 51800),

Gene: Juno112_68 Start: 37637, Stop: 37861, Start Num: 82

Candidate Starts for Juno112_68:

(Start: 50 @37565 has 1 MA's), (Start: 82 @37637 has 20 MA's), (Start: 90 @37664 has 2 MA's), (95, 37697), (97, 37712), (108, 37784), (111, 37802), (112, 37814), (116, 37841),

Gene: KHumphrey_69 Start: 37510, Stop: 37734, Start Num: 82

Candidate Starts for KHumphrey_69:

(Start: 50 @37438 has 1 MA's), (Start: 69 @37483 has 3 MA's), (Start: 82 @37510 has 20 MA's), (Start: 90 @37537 has 2 MA's), (95, 37570), (97, 37585), (108, 37657), (111, 37675), (112, 37687), (116, 37714),

Gene: KendraB23_75 Start: 39011, Stop: 39211, Start Num: 81

Candidate Starts for KendraB23_75:

(16, 38822), (21, 38855), (39, 38909), (52, 38939), (59, 38957), (Start: 81 @39011 has 4 MA's), (Start: 90 @39038 has 2 MA's), (93, 39065), (100, 39110), (106, 39146),

Gene: Kenuha5_87 Start: 52359, Stop: 52583, Start Num: 70

Candidate Starts for Kenuha5_87:

(Start: 70 @52359 has 110 MA's), (98, 52458),

Gene: Kepler_74 Start: 37670, Stop: 37915, Start Num: 74

Candidate Starts for Kepler_74:

(42, 37586), (Start: 74 @37670 has 13 MA's), (85, 37697), (87, 37706), (89, 37709), (93, 37739), (95, 37745), (102, 37790), (105, 37805), (111, 37856), (116, 37895),

Gene: Kiko_66 Start: 43613, Stop: 43864, Start Num: 70
Candidate Starts for Kiko_66:
(46, 43550), (58, 43577), (Start: 70 @43613 has 110 MA's), (110, 43814), (114, 43841),

Gene: Kimberlium_96 Start: 52453, Stop: 52677, Start Num: 70
Candidate Starts for Kimberlium_96:
(Start: 70 @52453 has 110 MA's), (98, 52552),

Gene: KingMidas_94 Start: 52870, Stop: 53094, Start Num: 70
Candidate Starts for KingMidas_94:
(Start: 70 @52870 has 110 MA's), (98, 52969),

Gene: KristaRAM_100 Start: 53831, Stop: 54055, Start Num: 70
Candidate Starts for KristaRAM_100:
(22, 53708), (51, 53774), (Start: 70 @53831 has 110 MA's), (98, 53930), (99, 53936), (109, 53999),

Gene: Kuleana_75 Start: 38064, Stop: 38273, Start Num: 75
Candidate Starts for Kuleana_75:
(15, 37878), (41, 37974), (51, 37995), (53, 37998), (72, 38055), (73, 38058), (Start: 74 @38061 has 13 MA's), (Start: 75 @38064 has 1 MA's), (84, 38082), (85, 38091), (87, 38100), (89, 38103), (Start: 90 @38106 has 2 MA's), (93, 38133), (95, 38139), (97, 38154), (110, 38232),

Gene: Laphuphu24k_67 Start: 37621, Stop: 37845, Start Num: 82
Candidate Starts for Laphuphu24k_67:
(Start: 50 @37549 has 1 MA's), (Start: 82 @37621 has 20 MA's), (Start: 90 @37648 has 2 MA's), (95, 37681), (97, 37696), (108, 37768), (111, 37786), (112, 37798), (116, 37825),

Gene: Leona_67 Start: 37757, Stop: 38008, Start Num: 69
Candidate Starts for Leona_67:
(21, 37649), (36, 37679), (53, 37715), (54, 37721), (Start: 69 @37757 has 3 MA's), (Start: 82 @37784 has 20 MA's), (Start: 90 @37811 has 2 MA's), (95, 37844), (97, 37859), (108, 37931), (111, 37949), (112, 37961), (116, 37988),

Gene: Leperchaun_96 Start: 53875, Stop: 54099, Start Num: 70
Candidate Starts for Leperchaun_96:
(Start: 70 @53875 has 110 MA's), (98, 53974),

Gene: LittleShirley_102 Start: 54183, Stop: 54407, Start Num: 70
Candidate Starts for LittleShirley_102:
(Start: 70 @54183 has 110 MA's), (98, 54282),

Gene: LittleTokyo_71 Start: 37065, Stop: 37412, Start Num: 35
Candidate Starts for LittleTokyo_71:
(19, 37011), (23, 37038), (28, 37047), (Start: 35 @37065 has 1 MA's), (51, 37101), (Start: 82 @37176 has 20 MA's), (87, 37197), (89, 37200), (Start: 90 @37203 has 2 MA's), (93, 37230), (96, 37245), (97, 37251), (101, 37278), (102, 37281), (110, 37332), (114, 37359), (118, 37398),

Gene: Lorde_97 Start: 49649, Stop: 49873, Start Num: 70
Candidate Starts for Lorde_97:
(Start: 70 @49649 has 110 MA's), (98, 49748),

Gene: Lucia_94 Start: 50497, Stop: 50721, Start Num: 70
Candidate Starts for Lucia_94:

(Start: 70 @50497 has 110 MA's), (98, 50596),

Gene: LunaBlu_98 Start: 53665, Stop: 53889, Start Num: 70

Candidate Starts for LunaBlu_98:

(Start: 70 @53665 has 110 MA's), (98, 53764),

Gene: Lunar_72 Start: 37670, Stop: 37915, Start Num: 74

Candidate Starts for Lunar_72:

(42, 37586), (Start: 74 @37670 has 13 MA's), (85, 37697), (87, 37706), (89, 37709), (93, 37739), (95, 37745), (102, 37790), (105, 37805), (111, 37856), (116, 37895),

Gene: Madavieve_75 Start: 50134, Stop: 50349, Start Num: 71

Candidate Starts for Madavieve_75:

(3, 49528), (4, 49543), (6, 49753), (7, 49759), (8, 49765), (11, 49867), (29, 50023), (34, 50038), (49, 50071), (Start: 71 @50134 has 8 MA's), (95, 50209), (99, 50236),

Gene: Madiba_93 Start: 52090, Stop: 52314, Start Num: 70

Candidate Starts for Madiba_93:

(Start: 70 @52090 has 110 MA's), (98, 52189),

Gene: MagicMan_69 Start: 46923, Stop: 47171, Start Num: 70

Candidate Starts for MagicMan_69:

(46, 46860), (Start: 70 @46923 has 110 MA's), (97, 47019), (103, 47079), (104, 47082),

Gene: Mahavrat_90 Start: 50730, Stop: 50954, Start Num: 70

Candidate Starts for Mahavrat_90:

(Start: 70 @50730 has 110 MA's), (98, 50829),

Gene: Marteena_76 Start: 49557, Stop: 49772, Start Num: 71

Candidate Starts for Marteena_76:

(3, 48948), (4, 48963), (5, 48993), (6, 49176), (7, 49182), (8, 49188), (11, 49290), (29, 49446), (33, 49455), (34, 49461), (49, 49494), (60, 49521), (Start: 71 @49557 has 8 MA's), (99, 49659),

Gene: Mcklovin_74 Start: 51595, Stop: 51810, Start Num: 71

Candidate Starts for Mcklovin_74:

(3, 50989), (4, 51004), (7, 51220), (8, 51226), (11, 51328), (29, 51484), (34, 51499), (49, 51532), (60, 51559), (Start: 71 @51595 has 8 MA's), (99, 51697), (108, 51757),

Gene: Medindi_99 Start: 53851, Stop: 54075, Start Num: 70

Candidate Starts for Medindi_99:

(Start: 70 @53851 has 110 MA's), (98, 53950),

Gene: Melons_72 Start: 37679, Stop: 37924, Start Num: 74

Candidate Starts for Melons_72:

(42, 37595), (Start: 74 @37679 has 13 MA's), (85, 37706), (87, 37715), (89, 37718), (93, 37748), (95, 37754), (102, 37799), (105, 37814), (111, 37865), (116, 37904),

Gene: MilleniumForce_94 Start: 53252, Stop: 53476, Start Num: 70

Candidate Starts for MilleniumForce_94:

(Start: 70 @53252 has 110 MA's), (98, 53351),

Gene: Moonbeam_97 Start: 53630, Stop: 53854, Start Num: 70

Candidate Starts for Moonbeam_97:

(Start: 70 @53630 has 110 MA's), (98, 53729),

Gene: Moonflower_64 Start: 44641, Stop: 44889, Start Num: 70

Candidate Starts for Moonflower_64:

(31, 44542), (Start: 70 @44641 has 110 MA's), (96, 44728), (108, 44833), (110, 44842),

Gene: Ms6_96 Start: 49416, Stop: 49640, Start Num: 70

Candidate Starts for Ms6_96:

(Start: 70 @49416 has 110 MA's), (98, 49515),

Gene: MulchExplorer_94 Start: 52124, Stop: 52348, Start Num: 70

Candidate Starts for MulchExplorer_94:

(Start: 70 @52124 has 110 MA's), (98, 52223),

Gene: NaLuna_71 Start: 45420, Stop: 45668, Start Num: 70

Candidate Starts for NaLuna_71:

(46, 45357), (Start: 70 @45420 has 110 MA's), (95, 45501), (97, 45516), (101, 45570), (104, 45579),

Gene: NewHope4_99 Start: 51791, Stop: 52015, Start Num: 70

Candidate Starts for NewHope4_99:

(Start: 70 @51791 has 110 MA's), (98, 51890),

Gene: Niblet_62 Start: 38397, Stop: 38600, Start Num: 80

Candidate Starts for Niblet_62:

(Start: 80 @38397 has 5 MA's), (Start: 82 @38400 has 20 MA's), (Start: 90 @38427 has 2 MA's), (92, 38448), (93, 38454), (97, 38475), (100, 38499), (106, 38535), (113, 38580),

Gene: Nimbo_86 Start: 51449, Stop: 51673, Start Num: 70

Candidate Starts for Nimbo_86:

(Start: 70 @51449 has 110 MA's), (98, 51548),

Gene: Nymphadora_79 Start: 51695, Stop: 51910, Start Num: 71

Candidate Starts for Nymphadora_79:

(1, 50861), (2, 50873), (3, 51089), (4, 51104), (5, 51134), (6, 51314), (7, 51320), (8, 51326), (11, 51428), (29, 51584), (34, 51599), (49, 51632), (Start: 71 @51695 has 8 MA's), (95, 51770), (97, 51785), (99, 51797),

Gene: Ogotogo_99 Start: 52090, Stop: 52314, Start Num: 66

Candidate Starts for Ogotogo_99:

(Start: 66 @52090 has 2 MA's),

Gene: OldBen_91 Start: 52841, Stop: 53065, Start Num: 70

Candidate Starts for OldBen_91:

(Start: 70 @52841 has 110 MA's), (98, 52940),

Gene: Opie_72 Start: 47038, Stop: 47286, Start Num: 70

Candidate Starts for Opie_72:

(46, 46975), (Start: 70 @47038 has 110 MA's), (97, 47134), (103, 47194), (104, 47197),

Gene: Oppalora_67 Start: 37635, Stop: 37859, Start Num: 82

Candidate Starts for Oppalora_67:

(Start: 50 @37563 has 1 MA's), (Start: 82 @37635 has 20 MA's), (87, 37656), (Start: 90 @37662 has 2 MA's), (95, 37695), (97, 37710), (108, 37782), (111, 37800), (112, 37812), (116, 37839),

Gene: Orcanus_64 Start: 38537, Stop: 38737, Start Num: 81

Candidate Starts for Orcanus_64:

(16, 38348), (21, 38381), (39, 38435), (52, 38465), (59, 38483), (Start: 81 @38537 has 4 MA's), (Start: 90 @38564 has 2 MA's), (93, 38591), (100, 38636), (102, 38642), (106, 38672), (110, 38693), (115, 38732),

Gene: Oregano_74 Start: 45625, Stop: 45852, Start Num: 80

Candidate Starts for Oregano_74:

(Start: 80 @45625 has 5 MA's), (83, 45631),

Gene: OtsoOtso_71 Start: 37295, Stop: 37540, Start Num: 74

Candidate Starts for OtsoOtso_71:

(42, 37211), (Start: 74 @37295 has 13 MA's), (85, 37322), (87, 37331), (89, 37334), (93, 37364), (95, 37370), (102, 37415), (105, 37430), (116, 37520),

Gene: Ovechkin_98 Start: 53678, Stop: 53902, Start Num: 70

Candidate Starts for Ovechkin_98:

(Start: 70 @53678 has 110 MA's), (98, 53777),

Gene: PHappiness_94 Start: 53670, Stop: 53894, Start Num: 70

Candidate Starts for PHappiness_94:

(Start: 70 @53670 has 110 MA's), (98, 53769),

Gene: PMC_93 Start: 51819, Stop: 52043, Start Num: 70

Candidate Starts for PMC_93:

(Start: 70 @51819 has 110 MA's), (98, 51918),

Gene: PatriciaStar_64 Start: 45016, Stop: 45264, Start Num: 70

Candidate Starts for PatriciaStar_64:

(31, 44917), (Start: 70 @45016 has 110 MA's), (Start: 80 @45031 has 5 MA's), (96, 45103), (108, 45208),

Gene: Pelletreau_75 Start: 39306, Stop: 39506, Start Num: 81

Candidate Starts for Pelletreau_75:

(16, 39117), (21, 39150), (39, 39204), (52, 39234), (59, 39252), (Start: 81 @39306 has 4 MA's), (Start: 90 @39333 has 2 MA's), (93, 39360), (97, 39381), (102, 39411), (106, 39441), (110, 39462),

Gene: Peridot_97 Start: 53192, Stop: 53416, Start Num: 70

Candidate Starts for Peridot_97:

(Start: 70 @53192 has 110 MA's), (98, 53291),

Gene: Phalconet_95 Start: 52818, Stop: 53042, Start Num: 70

Candidate Starts for Phalconet_95:

(Start: 70 @52818 has 110 MA's), (98, 52917),

Gene: Phatniss_92 Start: 52150, Stop: 52374, Start Num: 70

Candidate Starts for Phatniss_92:

(Start: 70 @52150 has 110 MA's), (98, 52249),

Gene: PhesterPhotato_98 Start: 52792, Stop: 53016, Start Num: 70

Candidate Starts for PhesterPhotato_98:

(Start: 70 @52792 has 110 MA's), (98, 52891),

Gene: PhirstandPhine_77 Start: 37484, Stop: 37729, Start Num: 74

Candidate Starts for PhirstandPhine_77:

(Start: 74 @37484 has 13 MA's), (85, 37511), (87, 37520), (89, 37523), (93, 37553), (95, 37559), (102, 37604), (105, 37619), (111, 37670), (116, 37709),

Gene: PhlipPhlop_84 Start: 54212, Stop: 54436, Start Num: 70

Candidate Starts for PhlipPhlop_84:

(Start: 70 @54212 has 110 MA's), (98, 54311),

Gene: PhluffyCoco_67 Start: 37664, Stop: 37960, Start Num: 50

Candidate Starts for PhluffyCoco_67:

(Start: 50 @37664 has 1 MA's), (Start: 82 @37736 has 20 MA's), (Start: 90 @37763 has 2 MA's), (95, 37796), (97, 37811), (108, 37883), (111, 37901), (112, 37913), (116, 37940),

Gene: Pineda_71 Start: 37640, Stop: 37885, Start Num: 74

Candidate Starts for Pineda_71:

(42, 37556), (Start: 74 @37640 has 13 MA's), (85, 37667), (87, 37676), (89, 37679), (93, 37709), (95, 37715), (102, 37760), (111, 37826), (116, 37865),

Gene: Poenanya_98 Start: 54376, Stop: 54600, Start Num: 70

Candidate Starts for Poenanya_98:

(Start: 70 @54376 has 110 MA's), (98, 54475),

Gene: Polka_70 Start: 37295, Stop: 37540, Start Num: 74

Candidate Starts for Polka_70:

(42, 37211), (Start: 74 @37295 has 13 MA's), (85, 37322), (87, 37331), (89, 37334), (93, 37364), (95, 37370), (102, 37415), (105, 37430), (116, 37520),

Gene: Polka14_98 Start: 54437, Stop: 54661, Start Num: 70

Candidate Starts for Polka14_98:

(Start: 70 @54437 has 110 MA's), (98, 54536),

Gene: Pollux_80 Start: 51514, Stop: 51729, Start Num: 71

Candidate Starts for Pollux_80:

(3, 50905), (4, 50920), (5, 50950), (6, 51133), (7, 51139), (8, 51145), (11, 51247), (29, 51403), (33, 51412), (34, 51418), (49, 51451), (60, 51478), (Start: 71 @51514 has 8 MA's), (99, 51616),

Gene: Polo2Bam_103 Start: 51645, Stop: 51869, Start Num: 70

Candidate Starts for Polo2Bam_103:

(Start: 70 @51645 has 110 MA's), (98, 51744),

Gene: Powerball_71 Start: 45724, Stop: 45951, Start Num: 80

Candidate Starts for Powerball_71:

(Start: 80 @45724 has 5 MA's), (83, 45730), (95, 45787), (108, 45874),

Gene: QuickMath_95 Start: 52705, Stop: 52929, Start Num: 70

Candidate Starts for QuickMath_95:

(Start: 70 @52705 has 110 MA's), (98, 52804),

Gene: Quico_103 Start: 54680, Stop: 54904, Start Num: 70

Candidate Starts for Quico_103:

(Start: 70 @54680 has 110 MA's), (98, 54779),

Gene: REQ2_81 Start: 47996, Stop: 48220, Start Num: 70
Candidate Starts for REQ2_81:
(9, 47633), (26, 47882), (44, 47927), (Start: 70 @47996 has 110 MA's),

Gene: Ramsey_99 Start: 54678, Stop: 54902, Start Num: 70
Candidate Starts for Ramsey_99:
(Start: 70 @54678 has 110 MA's), (98, 54777),

Gene: Rattail_70 Start: 38032, Stop: 38256, Start Num: 82
Candidate Starts for Rattail_70:
(Start: 50 @37960 has 1 MA's), (Start: 82 @38032 has 20 MA's), (Start: 90 @38059 has 2 MA's), (95, 38092), (97, 38107), (108, 38179), (111, 38197), (112, 38209), (116, 38236), (117, 38242),

Gene: RedBird_95 Start: 54415, Stop: 54639, Start Num: 70
Candidate Starts for RedBird_95:
(Start: 70 @54415 has 110 MA's), (98, 54514),

Gene: RedFox_70 Start: 37895, Stop: 38119, Start Num: 82
Candidate Starts for RedFox_70:
(64, 37856), (73, 37877), (Start: 82 @37895 has 20 MA's), (Start: 90 @37922 has 2 MA's), (95, 37955), (97, 37970), (111, 38060), (112, 38072), (116, 38099),

Gene: Renna12_71 Start: 38335, Stop: 38586, Start Num: 69
Candidate Starts for Renna12_71:
(47, 38281), (53, 38293), (54, 38299), (Start: 69 @38335 has 3 MA's), (Start: 82 @38362 has 20 MA's), (Start: 90 @38389 has 2 MA's), (95, 38422), (97, 38437), (108, 38509), (111, 38527), (112, 38539), (116, 38566),

Gene: RitaG_93 Start: 53472, Stop: 53696, Start Num: 70
Candidate Starts for RitaG_93:
(Start: 70 @53472 has 110 MA's), (98, 53571),

Gene: Rizz_76 Start: 46891, Stop: 47118, Start Num: 80
Candidate Starts for Rizz_76:
(Start: 80 @46891 has 5 MA's), (83, 46897), (95, 46954),

Gene: Rockne_97 Start: 51831, Stop: 52055, Start Num: 70
Candidate Starts for Rockne_97:
(Start: 70 @51831 has 110 MA's), (98, 51930),

Gene: RockyHorror_98 Start: 52582, Stop: 52806, Start Num: 70
Candidate Starts for RockyHorror_98:
(Start: 70 @52582 has 110 MA's), (98, 52681),

Gene: Royals2015_97 Start: 51702, Stop: 51926, Start Num: 70
Candidate Starts for Royals2015_97:
(Start: 70 @51702 has 110 MA's), (98, 51801),

Gene: Ruchi_63 Start: 37737, Stop: 37949, Start Num: 82
Candidate Starts for Ruchi_63:
(16, 37542), (58, 37674), (Start: 82 @37737 has 20 MA's), (Start: 90 @37764 has 2 MA's), (91, 37773), (100, 37836), (110, 37893), (112, 37914),

Gene: Sassafras_96 Start: 52732, Stop: 52956, Start Num: 70

Candidate Starts for Sassafras_96:

(Start: 70 @52732 has 110 MA's), (98, 52831),

Gene: Schnabeltier_70 Start: 46220, Stop: 46468, Start Num: 70

Candidate Starts for Schnabeltier_70:

(46, 46157), (Start: 70 @46220 has 110 MA's), (97, 46316), (103, 46376), (104, 46379),

Gene: Scottish_94 Start: 52309, Stop: 52533, Start Num: 70

Candidate Starts for Scottish_94:

(Start: 70 @52309 has 110 MA's), (98, 52408),

Gene: SeaLumen_100 Start: 51645, Stop: 51869, Start Num: 70

Candidate Starts for SeaLumen_100:

(Start: 70 @51645 has 110 MA's), (98, 51744),

Gene: Seagreen_95 Start: 53324, Stop: 53548, Start Num: 70

Candidate Starts for Seagreen_95:

(Start: 70 @53324 has 110 MA's), (98, 53423),

Gene: Shen_62 Start: 36923, Stop: 37123, Start Num: 81

Candidate Starts for Shen_62:

(16, 36734), (21, 36767), (39, 36821), (52, 36851), (59, 36869), (Start: 81 @36923 has 4 MA's), (Start: 90 @36950 has 2 MA's), (93, 36977), (100, 37022), (106, 37058), (110, 37079),

Gene: SimranZ1_90 Start: 51204, Stop: 51428, Start Num: 70

Candidate Starts for SimranZ1_90:

(Start: 70 @51204 has 110 MA's), (98, 51303),

Gene: Slim_97 Start: 52975, Stop: 53199, Start Num: 70

Candidate Starts for Slim_97:

(Start: 70 @52975 has 110 MA's), (98, 53074),

Gene: Spikelee_95 Start: 54476, Stop: 54700, Start Num: 70

Candidate Starts for Spikelee_95:

(Start: 70 @54476 has 110 MA's), (98, 54575),

Gene: Squirty_94 Start: 56513, Stop: 56737, Start Num: 70

Candidate Starts for Squirty_94:

(Start: 70 @56513 has 110 MA's), (98, 56612),

Gene: StAnnes_98 Start: 54237, Stop: 54461, Start Num: 70

Candidate Starts for StAnnes_98:

(Start: 70 @54237 has 110 MA's), (98, 54336),

Gene: Stap_89 Start: 49963, Stop: 50187, Start Num: 70

Candidate Starts for Stap_89:

(Start: 70 @49963 has 110 MA's), (98, 50062),

Gene: Starcevich_96 Start: 54084, Stop: 54308, Start Num: 70

Candidate Starts for Starcevich_96:

(Start: 70 @54084 has 110 MA's), (98, 54183),

Gene: StuartMinion_60 Start: 34373, Stop: 34597, Start Num: 82
Candidate Starts for StuartMinion_60:
(45, 34289), (56, 34316), (63, 34325), (Start: 68 @34343 has 1 MA's), (Start: 82 @34373 has 20 MA's),
(Start: 90 @34400 has 2 MA's), (95, 34433), (97, 34448), (108, 34520), (111, 34538), (112, 34550),
(116, 34577),

Gene: Suerte_69 Start: 45335, Stop: 45562, Start Num: 80
Candidate Starts for Suerte_69:
(Start: 80 @45335 has 5 MA's), (83, 45341),

Gene: Taj_101 Start: 54398, Stop: 54622, Start Num: 70
Candidate Starts for Taj_101:
(Start: 70 @54398 has 110 MA's), (98, 54497),

Gene: TaronosaurusRx_74 Start: 46596, Stop: 46844, Start Num: 70
Candidate Starts for TaronosaurusRx_74:
(30, 46488), (32, 46491), (38, 46509), (58, 46557), (Start: 70 @46596 has 110 MA's), (95, 46677), (97,
46692), (103, 46752), (104, 46755),

Gene: TaylorSipht_64 Start: 38271, Stop: 38459, Start Num: 82
Candidate Starts for TaylorSipht_64:
(28, 38142), (57, 38211), (62, 38217), (Start: 82 @38271 has 20 MA's), (87, 38292), (89, 38295),
(Start: 90 @38298 has 2 MA's), (91, 38307), (100, 38370), (108, 38418), (110, 38427), (112, 38448),

Gene: Toad24_67 Start: 39060, Stop: 39266, Start Num: 76
Candidate Starts for Toad24_67:
(55, 39006), (Start: 76 @39060 has 1 MA's), (Start: 82 @39066 has 20 MA's), (Start: 90 @39093 has 2
MA's), (93, 39120), (97, 39141), (100, 39165), (106, 39201), (110, 39222),

Gene: Tweety_95 Start: 53662, Stop: 53886, Start Num: 70
Candidate Starts for Tweety_95:
(Start: 70 @53662 has 110 MA's), (98, 53761),

Gene: UncleRicky_94 Start: 51705, Stop: 51929, Start Num: 70
Candidate Starts for UncleRicky_94:
(Start: 70 @51705 has 110 MA's), (98, 51804),

Gene: VRedHorse_95 Start: 50521, Stop: 50745, Start Num: 70
Candidate Starts for VRedHorse_95:
(Start: 70 @50521 has 110 MA's), (98, 50620),

Gene: Violac_96 Start: 54054, Stop: 54278, Start Num: 70
Candidate Starts for Violac_96:
(Start: 70 @54054 has 110 MA's), (98, 54153),

Gene: Vivum_92 Start: 54308, Stop: 54532, Start Num: 70
Candidate Starts for Vivum_92:
(Start: 70 @54308 has 110 MA's), (98, 54407),

Gene: Vulpecula_63 Start: 36929, Stop: 37147, Start Num: 78
Candidate Starts for Vulpecula_63:

(Start: 78 @36929 has 1 MA's), (Start: 82 @36935 has 20 MA's), (Start: 90 @36962 has 2 MA's), (91, 36971), (100, 37034), (107, 37073), (110, 37091), (112, 37112),

Gene: Wachhund_92 Start: 49757, Stop: 49981, Start Num: 70

Candidate Starts for Wachhund_92:

(Start: 70 @49757 has 110 MA's), (98, 49856),

Gene: Wee_98 Start: 54474, Stop: 54698, Start Num: 70

Candidate Starts for Wee_98:

(Start: 70 @54474 has 110 MA's), (98, 54573),

Gene: Westrich_73 Start: 39227, Stop: 39433, Start Num: 76

Candidate Starts for Westrich_73:

(55, 39173), (Start: 76 @39227 has 1 MA's), (Start: 82 @39233 has 20 MA's), (Start: 90 @39260 has 2 MA's), (93, 39287), (97, 39308), (100, 39332), (106, 39368), (110, 39389),

Gene: WileyE_65 Start: 37923, Stop: 38135, Start Num: 82

Candidate Starts for WileyE_65:

(48, 37848), (60, 37875), (67, 37896), (Start: 80 @37920 has 5 MA's), (Start: 82 @37923 has 20 MA's), (85, 37935), (Start: 90 @37950 has 2 MA's), (91, 37959), (100, 38022), (110, 38079), (112, 38100),

Gene: WillSterrel_92 Start: 53037, Stop: 53261, Start Num: 70

Candidate Starts for WillSterrel_92:

(Start: 70 @53037 has 110 MA's), (98, 53136),

Gene: XFactor_85 Start: 50787, Stop: 51011, Start Num: 70

Candidate Starts for XFactor_85:

(Start: 70 @50787 has 110 MA's), (98, 50886),

Gene: ZAYM_75 Start: 46437, Stop: 46685, Start Num: 70

Candidate Starts for ZAYM_75:

(46, 46371), (Start: 70 @46437 has 110 MA's), (95, 46518), (97, 46533), (103, 46593), (104, 46596),

Gene: Zixiang_64 Start: 38427, Stop: 38627, Start Num: 81

Candidate Starts for Zixiang_64:

(16, 38238), (21, 38271), (39, 38325), (52, 38355), (59, 38373), (Start: 81 @38427 has 4 MA's), (Start: 90 @38454 has 2 MA's), (93, 38481), (100, 38526), (106, 38562), (110, 38583),