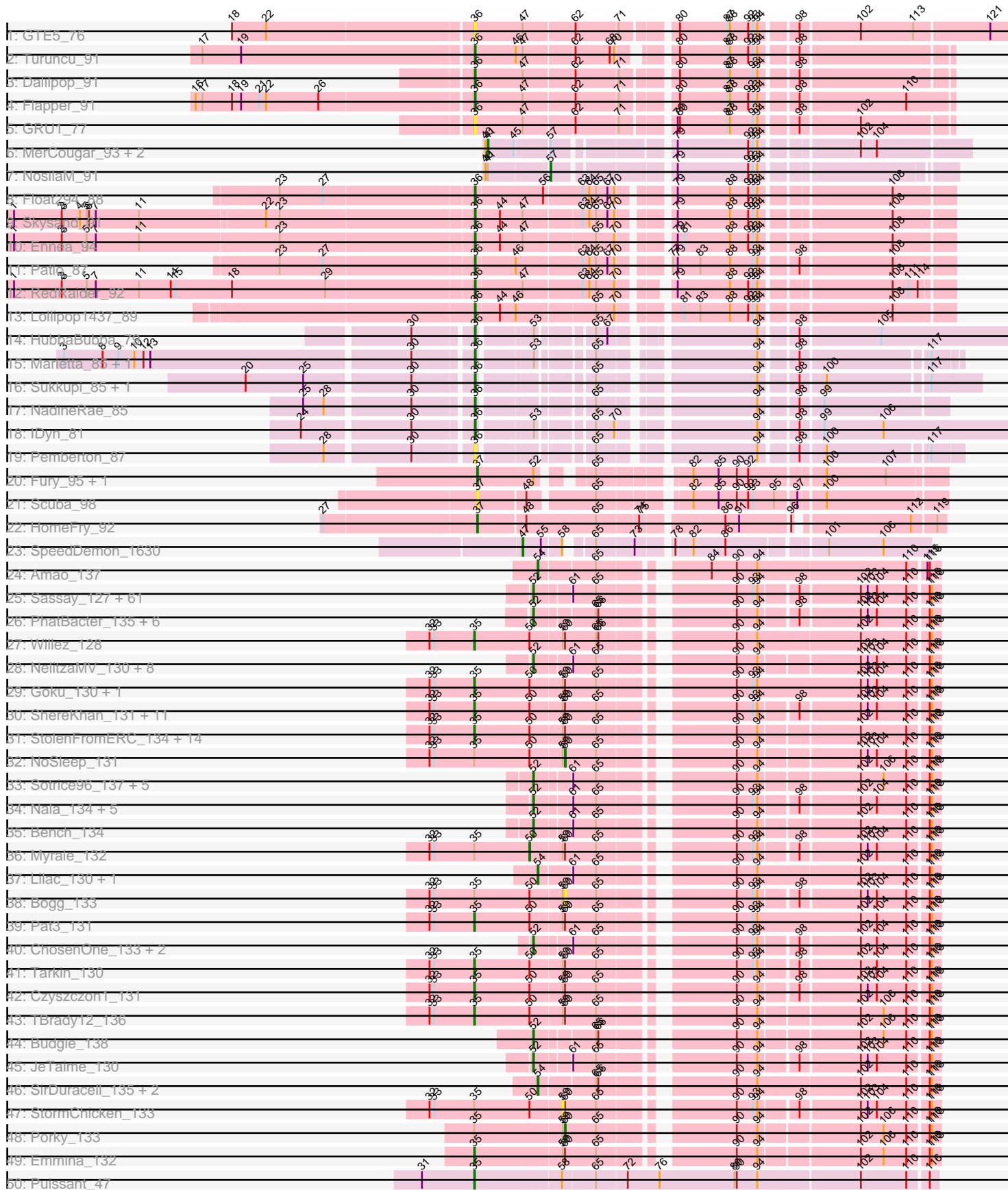
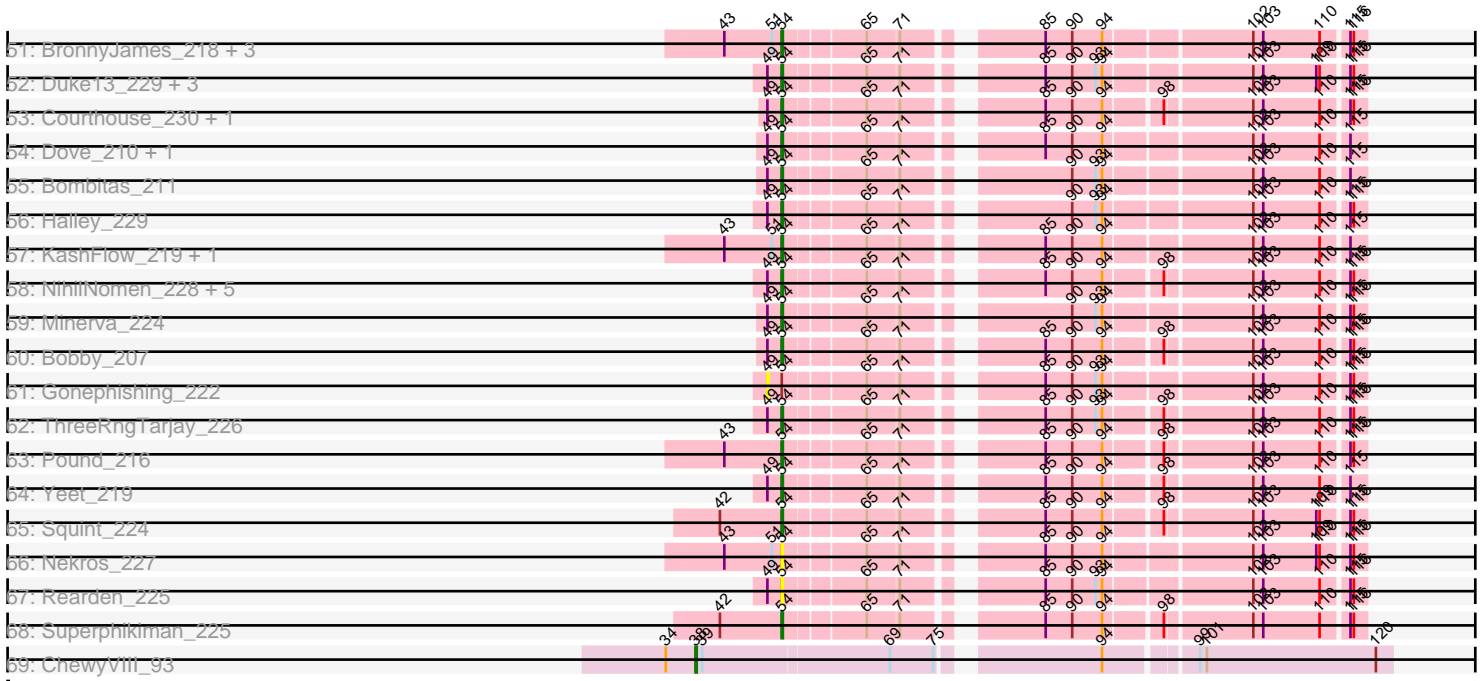


Pham 308097



Pham 308097



Note: Tracks are now grouped by subcluster and scaled. Switching in subcluster is indicated by changes in track color. Track scale is now set by default to display the region 30 bp upstream of start 1 to 30 bp downstream of the last possible start. If this default region is judged to be packed too tightly with annotated starts, the track will be further scaled to only show that region of the ORF with annotated starts. This action will be indicated by adding "Zoomed" to the title. For starts, yellow indicates the location of called starts comprised solely of Glimmer/GeneMark auto-annotations, green indicates the location of called starts with at least 1 manual gene annotation.

Pham 308097 Report

This analysis was run 06/27/26 on database version 652.

Pham number 308097 has 204 members, 24 are drafts.

Phages represented in each track:

- Track 1 : GTE5_76
- Track 2 : Turuncu_91
- Track 3 : Dalilpop_91
- Track 4 : Flapper_91
- Track 5 : GRU1_77
- Track 6 : MerCougar_93, Outis_91, StarStruck_91
- Track 7 : NosilaM_91
- Track 8 : Float294_88
- Track 9 : Skysand_91
- Track 10 : Ennea_94
- Track 11 : Patio_87
- Track 12 : RedRaider_92
- Track 13 : Lollipop1437_89
- Track 14 : HubbaBubba_79
- Track 15 : Marietta_85, WhoseManz_85
- Track 16 : Sukkupi_85, Yndexa_85
- Track 17 : NadineRae_85
- Track 18 : IDyn_81
- Track 19 : Pemberton_87
- Track 20 : Fury_95, Pleakley_95
- Track 21 : Scuba_98
- Track 22 : HomeFry_92
- Track 23 : SpeedDemon_1630
- Track 24 : Amao_137
- Track 25 : Sassay_127, TeardropMSU_133, IHOP_136, SophKB_130, ABCat_133, FoghornLeghorn_130, Harella_138, DrDrey_135, MISSy_134, DoctorDiddles_130, Phrux_128, Tomaszewski_126, Contagion_128, Barbarian_132, BadStone_133, Misfit_132, Murphy_131, Phaja_136, Henry_134, Gator_134, Youngblood_136, Bask21_137, Mosby_129, Petra64142_134, Inca_131, Asriel_129, Filch_134, OrionPax_128, Palpatine_132, CrystalP_132, Dusk_133, 244_133, BaboJay_131, BugsBunny_131, ChotaBhai_136, MollyToe_126, Tuco_138, FairyPath_134, Marshmallow_133, Flypotenuse_127, Ukulele_127, Kostya_133, Maxxinista_134, Toto_130, Simpliphy_131, ShamWow_132, Icee_137, Becksu_130, MPhalcon_133, RiverMonster_131, Traaww1_128, MadamMonkfish_132, Glexan_136, Liveloughbron_131, Greep_136, Nimrod_132, BilboSwaggins_130, Ptowny_126, Terminus_135, Hopey_131, Pumpkin_132, Bruin_129

- Track 26 : PhatBacter_135, FireRed_135, HufflyPuff_134, YassJohnny_128, Phaux_134, Murica_136, Policronamos_133
- Track 27 : Willez_128
- Track 28 : NelitzaMV_130, Command613_134, Daikon_134, Mindy_135, Thresher_134, Elph10_130, Balomoji_132, Rakim_133, Brewer_128
- Track 29 : Goku_130, Eureka_131
- Track 30 : ShereKhan_131, Pharsalus_129, xkcd_135, Miniwave_125, Kanye_128, HanKaySha_131, Qualification_132, Buck_132, TeamEdward_131, Paperbeatsrock_130, BigBubba_134, StellaBean_129
- Track 31 : StolenFromERC_134, Stank_135, NonchalantPear_132, Adnama_136, GooberAzure_134, Kimchi_137, Argent26_136, GoldenSpark_136, Xandras_132, Moldemort_134, Easy2Say_133, Gemini_137, AmericanBeauty_135, Lilizi_132, Goldilocks_137
- Track 32 : NoSleep_131
- Track 33 : Sotrice96_137, Wiggin_135, Highbury_128, Saints25_128, Hoonter_135, Cactus_140
- Track 34 : Nala_134, Dumbo_133, Cjw1_130, Rimmer_129, PaddyBaddy_129, Stark_130
- Track 35 : Bench_134
- Track 36 : Myrale_132
- Track 37 : Lilac_130, Cookies_133
- Track 38 : Bogg_133
- Track 39 : Pat3_131
- Track 40 : ChosenOne_133, Lilpickle_132, Elite2014_132
- Track 41 : Tarkin_130
- Track 42 : Czyszczon1_131
- Track 43 : TBrady12_136
- Track 44 : Budgie_138
- Track 45 : JeTaime_130
- Track 46 : SirDuracell_135, Holt_138, Manda_133
- Track 47 : StormChicken_133
- Track 48 : Porky_133
- Track 49 : Emmina_132
- Track 50 : Puissant_47
- Track 51 : BronnyJames_218, Shaboozey_224, Nibley_216, Omega_228
- Track 52 : Duke13_229, Hughesyang_227, EricMillard_223, Bagrid_233
- Track 53 : Courthouse_230, DmpstrDiver_226
- Track 54 : Dove_210, Schatzie_217
- Track 55 : Bombitas_211
- Track 56 : Halley_229
- Track 57 : KashFlow_219, Hannaconda_217
- Track 58 : NihilNomen_228, Phoebus_224, Ariel_233, Beem_228, HokkenD_217, JuicyJay_221
- Track 59 : Minerva_224
- Track 60 : Bobby_207
- Track 61 : Gonephishing_222
- Track 62 : ThreeRngTarjay_226
- Track 63 : Pound_216
- Track 64 : Yeet_219
- Track 65 : Squint_224
- Track 66 : Nekros_227
- Track 67 : Rearden_225
- Track 68 : Superphikiman_225

- Track 69 : ChewyVIII_93

Summary of Final Annotations (See graph section above for start numbers):

The start number called the most often in the published annotations is 52, it was called in 86 of the 180 non-draft genes in the pham.

Genes that call this "Most Annotated" start:

- 244_133, ABCat_133, Asriel_129, BaboJay_131, BadStone_133, Balomoji_132, Barbarian_132, Bask21_137, Becksu_130, Bench_134, BilboSwaggins_130, Brewer_128, Bruin_129, Budgie_138, BugsBunny_131, Cactus_140, ChosenOne_133, ChotaBhai_136, Cjw1_130, Command613_134, Contagion_128, CrystalP_132, Daikon_134, DoctorDiddles_130, DrDrey_135, Dumbo_133, Dusk_133, Elite2014_132, Elph10_130, FairyPath_134, Filch_134, FireRed_135, Flypotenuse_127, FoghornLeghorn_130, Gator_134, Glexan_136, Greep_136, Harella_138, Henry_134, Highbury_128, Hoonter_135, Hopey_131, HufflyPuff_134, IHOP_136, Icee_137, Inca_131, JeTaime_130, Kostya_133, Lilpickle_132, Livilaughbron_131, MISSy_134, MPhalcon_133, MadamMonkfish_132, Marshmallow_133, Maxxinista_134, Mindy_135, Misfit_132, MollyToe_126, Mosby_129, Murica_136, Murphy_131, Nala_134, NelitzaMV_130, Nimrod_132, OrionPax_128, PaddyBaddy_129, Palpatine_132, Petra64142_134, Phaja_136, PhatBacter_135, Phaux_134, Phrux_128, Policronamos_133, Ptowny_126, Pumpkin_132, Rakim_133, Rimmer_129, RiverMonster_131, Saints25_128, Sassay_127, ShamWow_132, Simpliphy_131, SophKB_130, Sotrice96_137, Stark_130, TeardropMSU_133, Terminus_135, Thresher_134, Tomaszewski_126, Toto_130, Traaww1_128, Tuco_138, Ukulele_127, Wiggin_135, YassJohnny_128, Youngblood_136,

Genes that have the "Most Annotated" start but do not call it:

- Fury_95, Pleakley_95,

Genes that do not have the "Most Annotated" start:

- Adnama_136, Amao_137, AmericanBeauty_135, Argent26_136, Ariel_233, Bagrid_233, Beem_228, BigBubba_134, Bobby_207, Bogg_133, Bombitas_211, BronnyJames_218, Buck_132, ChewyVIII_93, Cookies_133, Courthouse_230, Czyszczonek_131, Dalilpop_91, DmpstrDiver_226, Dove_210, Duke13_229, Easy2Say_133, Emmina_132, Ennea_94, EricMillard_223, Eureka_131, Flapper_91, Float294_88, GRU1_77, GTE5_76, Gemini_137, Goku_130, GoldenSpark_136, Goldilocks_137, Gonephishing_222, GooberAzure_134, Halley_229, HanKaySha_131, Hannaconda_217, HokkenD_217, Holt_138, HomeFry_92, HubbaBubba_79, Hughesyang_227, IDyn_81, JuicyJay_221, Kanye_128, KashFlow_219, Kimchi_137, Lilac_130, Lilizi_132, Lollipop1437_89, Manda_133, Marietta_85, MerCougar_93, Minerva_224, Miniwave_125, Moldemort_134, Myrale_132, NadineRae_85, Nekros_227, Nibley_216, NihilNomen_228, NoSleep_131, NonchalantPear_132, NosilaM_91, Omega_228, Outis_91, Paperbeatsrock_130, Pat3_131, Patio_87, Pemberton_87, Pharsalus_129, Phoebus_224, Porky_133, Pound_216, Puissant_47, Quallification_132, Rearden_225, RedRaider_92, Schatzie_217, Scuba_98, Shaboozey_224, ShereKhan_131, SirDuracell_135, Skysand_91, SpeedDemon_1630, Squint_224, Stank_135, StarStruck_91, StellaBean_129, StolenFromERC_134,

StormChicken_133, Sukkupi_85, Superphikiman_225, TBrady12_136, Tarkin_130, TeamEdward_131, ThreeRngTarjay_226, Turuncu_91, WhoseManz_85, Willez_128, Xandras_132, Yeet_219, Yndexa_85, xkcd_135,

Summary by start number:

Start 35:

- Found in 41 of 204 (20.1%) of genes in pham
- Manual Annotations of this start: 35 of 180
- Called 87.8% of time when present
- Phage (with cluster) where this start called: Adnama_136 (E), AmericanBeauty_135 (E), Argent26_136 (E), BigBubba_134 (E), Buck_132 (E), Czyszczo1_131 (E), Easy2Say_133 (E), Emmina_132 (E), Eureka_131 (E), Gemini_137 (E), Goku_130 (E), GoldenSpark_136 (E), Goldilocks_137 (E), GooberAzure_134 (E), HanKaySha_131 (E), Kanye_128 (E), Kimchi_137 (E), Lilizi_132 (E), Miniwave_125 (E), Moldemort_134 (E), NonchalantPear_132 (E), Paperbeatsrock_130 (E), Pat3_131 (E), Pharsalus_129 (E), Puissant_47 (H1), Qualification_132 (E), ShereKhan_131 (E), Stank_135 (E), StellaBean_129 (E), StolenFromERC_134 (E), TBrady12_136 (E), Tarkin_130 (E), TeamEdward_131 (E), Willez_128 (E), Xandras_132 (E), xkcd_135 (E),

Start 36:

- Found in 19 of 204 (9.3%) of genes in pham
- Manual Annotations of this start: 16 of 180
- Called 100.0% of time when present
- Phage (with cluster) where this start called: Dalilpop_91 (CR1), Ennea_94 (CR3), Flapper_91 (CR1), Float294_88 (CR3), GRU1_77 (CR1), GTE5_76 (CR1), HubbaBubba_79 (CR4), IDyn_81 (CR4), Lollipop1437_89 (CR3), Marietta_85 (CR4), NadineRae_85 (CR4), Patio_87 (CR3), Pemberton_87 (CR4), RedRaider_92 (CR3), Skysand_91 (CR3), Sukkupi_85 (CR4), Turuncu_91 (CR1), WhoseManz_85 (CR4), Yndexa_85 (CR4),

Start 37:

- Found in 4 of 204 (2.0%) of genes in pham
- Manual Annotations of this start: 3 of 180
- Called 100.0% of time when present
- Phage (with cluster) where this start called: Fury_95 (CR5), HomeFry_92 (CR5), Pleakley_95 (CR5), Scuba_98 (CR5),

Start 38:

- Found in 1 of 204 (0.5%) of genes in pham
- Manual Annotations of this start: 1 of 180
- Called 100.0% of time when present
- Phage (with cluster) where this start called: ChewyVIII_93 (singleton),

Start 41:

- Found in 4 of 204 (2.0%) of genes in pham
- Manual Annotations of this start: 3 of 180
- Called 75.0% of time when present
- Phage (with cluster) where this start called: MerCougar_93 (CR2), Outis_91 (CR2), StarStruck_91 (CR2),

Start 47:

- Found in 9 of 204 (4.4%) of genes in pham
- Manual Annotations of this start: 1 of 180
- Called 11.1% of time when present
- Phage (with cluster) where this start called: SpeedDemon_1630 (DL),

Start 49:

- Found in 22 of 204 (10.8%) of genes in pham
- No Manual Annotations of this start.
- Called 4.5% of time when present
- Phage (with cluster) where this start called: Gonephishing_222 (J),

Start 50:

- Found in 38 of 204 (18.6%) of genes in pham
- Manual Annotations of this start: 1 of 180
- Called 2.6% of time when present
- Phage (with cluster) where this start called: Myrale_132 (E),

Start 52:

- Found in 98 of 204 (48.0%) of genes in pham
- Manual Annotations of this start: 86 of 180
- Called 98.0% of time when present
- Phage (with cluster) where this start called: 244_133 (E), ABCat_133 (E), Asriel_129 (E), BaboJay_131 (E), BadStone_133 (E), Balomoji_132 (E), Barbarian_132 (E), Bask21_137 (E), Becksu_130 (E), Bench_134 (E), BilboSwaggins_130 (E), Brewer_128 (E), Bruin_129 (E), Budgie_138 (E), BugsBunny_131 (E), Cactus_140 (E), ChosenOne_133 (E), ChotaBhai_136 (E), Cjw1_130 (E), Command613_134 (E), Contagion_128 (E), CrystalP_132 (E), Daikon_134 (E), DoctorDiddles_130 (E), DrDrey_135 (E), Dumbo_133 (E), Dusk_133 (E), Elite2014_132 (E), Elph10_130 (E), FairyPath_134 (E), Filch_134 (E), FireRed_135 (E), Flypotenuse_127 (E), FoghornLeghorn_130 (E), Gator_134 (E), Glexan_136 (E), Greep_136 (E), Harella_138 (E), Henry_134 (E), Highbury_128 (E), Hoonter_135 (E), Hopey_131 (E), HufflyPuff_134 (E), IHOP_136 (E), Icee_137 (E), Inca_131 (E), JeTaime_130 (E), Kostya_133 (E), Lilpickle_132 (E), Liveloughbron_131 (E), MISSy_134 (E), MPhalcon_133 (E), MadamMonkfish_132 (E), Marshmallow_133 (E), Maxxinsta_134 (E), Mindy_135 (E), Misfit_132 (E), MollyToe_126 (E), Mosby_129 (E), Murica_136 (E), Murphy_131 (E), Nala_134 (E), NelitzaMV_130 (E), Nimrod_132 (E), OrionPax_128 (E), PaddyBaddy_129 (E), Palpatine_132 (E), Petra64142_134 (E), Phaja_136 (E), PhatBacter_135 (E), Phaux_134 (E), Phrux_128 (E), Policronamos_133 (E), Ptowny_126 (E), Pumpkin_132 (E), Rakim_133 (E), Rimmer_129 (E), RiverMonster_131 (E), Saints25_128 (E), Sassay_127 (E), ShamWow_132 (E), Simpliphy_131 (E), SophKB_130 (E), Sotrice96_137 (E), Stark_130 (E), TeardropMSU_133 (E), Terminus_135 (E), Thresher_134 (E), Tomaszewski_126 (E), Toto_130 (E), Traaww1_128 (E), Tuco_138 (E), Ukulele_127 (E), Wiggin_135 (E), YassJohnny_128 (E), Youngblood_136 (E),

Start 54:

- Found in 38 of 204 (18.6%) of genes in pham
- Manual Annotations of this start: 31 of 180
- Called 97.4% of time when present
- Phage (with cluster) where this start called: Amao_137 (E), Ariel_233 (J), Bagrid_233 (J), Beem_228 (J), Bobby_207 (J), Bombitas_211 (J), BronnyJames_218 (J), Cookies_133 (E), Courthouse_230 (J), DmpstrDiver_226 (J), Dove_210 (J), Duke13_229 (J), EricMillard_223 (J), Halley_229 (J), Hannaconda_217 (J),

HokkenD_217 (J), Holt_138 (E), Hughesyang_227 (J), JuicyJay_221 (J), KashFlow_219 (J), Lilac_130 (E), Manda_133 (E), Minerva_224 (J), Nekros_227 (J), Nibley_216 (J), NihilNomen_228 (J), Omega_228 (J), Phoebus_224 (J), Pound_216 (J), Rearden_225 (J), Schatzie_217 (J), Shaboozey_224 (J), SirDuracell_135 (E), Squint_224 (J), Superphikiman_225 (J), ThreeRngTarjay_226 (J), Yeet_219 (J),

Start 57:

- Found in 4 of 204 (2.0%) of genes in pham
- Manual Annotations of this start: 1 of 180
- Called 25.0% of time when present
- Phage (with cluster) where this start called: NosilaM_91 (CR2),

Start 59:

- Found in 40 of 204 (19.6%) of genes in pham
- No Manual Annotations of this start.
- Called 2.5% of time when present
- Phage (with cluster) where this start called: StormChicken_133 (E),

Start 60:

- Found in 40 of 204 (19.6%) of genes in pham
- Manual Annotations of this start: 2 of 180
- Called 7.5% of time when present
- Phage (with cluster) where this start called: Bogg_133 (E), NoSleep_131 (E), Porky_133 (E),

Summary by clusters:

There are 10 clusters represented in this pham: CR2, CR3, singleton, CR1, E, CR4, CR5, J, DL, H1,

Info for manual annotations of cluster CR1:

- Start number 36 was manually annotated 3 times for cluster CR1.

Info for manual annotations of cluster CR2:

- Start number 41 was manually annotated 3 times for cluster CR2.
- Start number 57 was manually annotated 1 time for cluster CR2.

Info for manual annotations of cluster CR3:

- Start number 36 was manually annotated 6 times for cluster CR3.

Info for manual annotations of cluster CR4:

- Start number 36 was manually annotated 7 times for cluster CR4.

Info for manual annotations of cluster CR5:

- Start number 37 was manually annotated 3 times for cluster CR5.

Info for manual annotations of cluster DL:

- Start number 47 was manually annotated 1 time for cluster DL.

Info for manual annotations of cluster E:

- Start number 35 was manually annotated 34 times for cluster E.
- Start number 50 was manually annotated 1 time for cluster E.
- Start number 52 was manually annotated 86 times for cluster E.

- Start number 54 was manually annotated 6 times for cluster E.
- Start number 60 was manually annotated 2 times for cluster E.

Info for manual annotations of cluster H1:

- Start number 35 was manually annotated 1 time for cluster H1.

Info for manual annotations of cluster J:

- Start number 54 was manually annotated 25 times for cluster J.

Gene Information:

Gene: 244_133 Start: 70573, Stop: 70115, Start Num: 52

Candidate Starts for 244_133:

(Start: 52 @70573 has 86 MA's), (61, 70534), (65, 70504), (90, 70354), (93, 70333), (94, 70327), (98, 70285), (102, 70213), (103, 70204), (104, 70192), (110, 70153), (116, 70129), (118, 70126),

Gene: ABCat_133 Start: 72121, Stop: 71663, Start Num: 52

Candidate Starts for ABCat_133:

(Start: 52 @72121 has 86 MA's), (61, 72082), (65, 72052), (90, 71902), (93, 71881), (94, 71875), (98, 71833), (102, 71761), (103, 71752), (104, 71740), (110, 71701), (116, 71677), (118, 71674),

Gene: Adnama_136 Start: 70869, Stop: 70321, Start Num: 35

Candidate Starts for Adnama_136:

(32, 70926), (33, 70920), (Start: 35 @70869 has 35 MA's), (Start: 50 @70797 has 1 MA's), (59, 70758), (Start: 60 @70755 has 2 MA's), (65, 70716), (90, 70566), (94, 70539), (102, 70419), (110, 70359), (116, 70335), (118, 70332),

Gene: Amao_137 Start: 71946, Stop: 71473, Start Num: 54

Candidate Starts for Amao_137:

(Start: 54 @71946 has 31 MA's), (65, 71877), (84, 71760), (90, 71727), (94, 71700), (110, 71508), (115, 71487), (116, 71484),

Gene: AmericanBeauty_135 Start: 70911, Stop: 70363, Start Num: 35

Candidate Starts for AmericanBeauty_135:

(32, 70968), (33, 70962), (Start: 35 @70911 has 35 MA's), (Start: 50 @70839 has 1 MA's), (59, 70800), (Start: 60 @70797 has 2 MA's), (65, 70758), (90, 70608), (94, 70581), (102, 70461), (110, 70401), (116, 70377), (118, 70374),

Gene: Argent26_136 Start: 70793, Stop: 70245, Start Num: 35

Candidate Starts for Argent26_136:

(32, 70850), (33, 70844), (Start: 35 @70793 has 35 MA's), (Start: 50 @70721 has 1 MA's), (59, 70682), (Start: 60 @70679 has 2 MA's), (65, 70640), (90, 70490), (94, 70463), (102, 70343), (110, 70283), (116, 70259), (118, 70256),

Gene: Ariel_233 Start: 105828, Stop: 105376, Start Num: 54

Candidate Starts for Ariel_233:

(49, 105840), (Start: 54 @105828 has 31 MA's), (65, 105762), (71, 105735), (85, 105636), (90, 105612), (94, 105585), (98, 105543), (102, 105471), (103, 105462), (110, 105411), (115, 105390), (116, 105387),

Gene: Asriel_129 Start: 69426, Stop: 68968, Start Num: 52

Candidate Starts for Asriel_129:

(Start: 52 @69426 has 86 MA's), (61, 69387), (65, 69357), (90, 69207), (93, 69186), (94, 69180), (98, 69138), (102, 69066), (103, 69057), (104, 69045), (110, 69006), (116, 68982), (118, 68979),

Gene: BaboJay_131 Start: 71740, Stop: 71282, Start Num: 52

Candidate Starts for BaboJay_131:

(Start: 52 @71740 has 86 MA's), (61, 71701), (65, 71671), (90, 71521), (93, 71500), (94, 71494), (98, 71452), (102, 71380), (103, 71371), (104, 71359), (110, 71320), (116, 71296), (118, 71293),

Gene: BadStone_133 Start: 71669, Stop: 71211, Start Num: 52

Candidate Starts for BadStone_133:

(Start: 52 @71669 has 86 MA's), (61, 71630), (65, 71600), (90, 71450), (93, 71429), (94, 71423), (98, 71381), (102, 71309), (103, 71300), (104, 71288), (110, 71249), (116, 71225), (118, 71222),

Gene: Bagrid_233 Start: 109850, Stop: 109392, Start Num: 54

Candidate Starts for Bagrid_233:

(49, 109862), (Start: 54 @109850 has 31 MA's), (65, 109784), (71, 109757), (85, 109658), (90, 109634), (93, 109613), (94, 109607), (102, 109487), (103, 109478), (109, 109430), (110, 109427), (115, 109406), (116, 109403),

Gene: Balomoji_132 Start: 71215, Stop: 70751, Start Num: 52

Candidate Starts for Balomoji_132:

(Start: 52 @71215 has 86 MA's), (61, 71176), (65, 71146), (90, 70996), (94, 70969), (102, 70849), (103, 70840), (104, 70828), (110, 70789), (116, 70765), (118, 70762),

Gene: Barbarian_132 Start: 69426, Stop: 68968, Start Num: 52

Candidate Starts for Barbarian_132:

(Start: 52 @69426 has 86 MA's), (61, 69387), (65, 69357), (90, 69207), (93, 69186), (94, 69180), (98, 69138), (102, 69066), (103, 69057), (104, 69045), (110, 69006), (116, 68982), (118, 68979),

Gene: Bask21_137 Start: 70592, Stop: 70134, Start Num: 52

Candidate Starts for Bask21_137:

(Start: 52 @70592 has 86 MA's), (61, 70553), (65, 70523), (90, 70373), (93, 70352), (94, 70346), (98, 70304), (102, 70232), (103, 70223), (104, 70211), (110, 70172), (116, 70148), (118, 70145),

Gene: Becksu_130 Start: 71393, Stop: 70935, Start Num: 52

Candidate Starts for Becksu_130:

(Start: 52 @71393 has 86 MA's), (61, 71354), (65, 71324), (90, 71174), (93, 71153), (94, 71147), (98, 71105), (102, 71033), (103, 71024), (104, 71012), (110, 70973), (116, 70949), (118, 70946),

Gene: Beem_228 Start: 108612, Stop: 108160, Start Num: 54

Candidate Starts for Beem_228:

(49, 108624), (Start: 54 @108612 has 31 MA's), (65, 108546), (71, 108519), (85, 108420), (90, 108396), (94, 108369), (98, 108327), (102, 108255), (103, 108246), (110, 108195), (115, 108174), (116, 108171),

Gene: Bench_134 Start: 71466, Stop: 71002, Start Num: 52

Candidate Starts for Bench_134:

(Start: 52 @71466 has 86 MA's), (61, 71427), (65, 71397), (90, 71247), (94, 71220), (102, 71100), (110, 71040), (116, 71016), (118, 71013),

Gene: BigBubba_134 Start: 70303, Stop: 69761, Start Num: 35

Candidate Starts for BigBubba_134:

(32, 70360), (33, 70354), (Start: 35 @70303 has 35 MA's), (Start: 50 @70231 has 1 MA's), (59, 70192), (Start: 60 @70189 has 2 MA's), (65, 70150), (90, 70000), (93, 69979), (94, 69973), (98, 69931), (102, 69859), (103, 69850), (104, 69838), (110, 69799), (116, 69775), (118, 69772),

Gene: BilboSwaggins_130 Start: 71706, Stop: 71248, Start Num: 52

Candidate Starts for BilboSwaggins_130:

(Start: 52 @71706 has 86 MA's), (61, 71667), (65, 71637), (90, 71487), (93, 71466), (94, 71460), (98, 71418), (102, 71346), (103, 71337), (104, 71325), (110, 71286), (116, 71262), (118, 71259),

Gene: Bobby_207 Start: 106620, Stop: 106168, Start Num: 54

Candidate Starts for Bobby_207:

(49, 106632), (Start: 54 @106620 has 31 MA's), (65, 106554), (71, 106527), (85, 106428), (90, 106404), (94, 106377), (98, 106335), (102, 106263), (103, 106254), (110, 106203), (115, 106182), (116, 106179),

Gene: Bogg_133 Start: 70722, Stop: 70294, Start Num: 60

Candidate Starts for Bogg_133:

(32, 70893), (33, 70887), (Start: 35 @70836 has 35 MA's), (Start: 50 @70764 has 1 MA's), (59, 70725), (Start: 60 @70722 has 2 MA's), (65, 70683), (90, 70533), (93, 70512), (94, 70506), (98, 70464), (102, 70392), (103, 70383), (104, 70371), (110, 70332), (116, 70308), (118, 70305),

Gene: Bombitas_211 Start: 105190, Stop: 104732, Start Num: 54

Candidate Starts for Bombitas_211:

(49, 105202), (Start: 54 @105190 has 31 MA's), (65, 105124), (71, 105097), (90, 104974), (93, 104953), (94, 104947), (102, 104827), (103, 104818), (110, 104767), (115, 104746),

Gene: Brewer_128 Start: 69394, Stop: 68930, Start Num: 52

Candidate Starts for Brewer_128:

(Start: 52 @69394 has 86 MA's), (61, 69355), (65, 69325), (90, 69175), (94, 69148), (102, 69028), (103, 69019), (104, 69007), (110, 68968), (116, 68944), (118, 68941),

Gene: BronnyJames_218 Start: 103404, Stop: 102946, Start Num: 54

Candidate Starts for BronnyJames_218:

(43, 103455), (51, 103413), (Start: 54 @103404 has 31 MA's), (65, 103338), (71, 103311), (85, 103212), (90, 103188), (94, 103161), (102, 103041), (103, 103032), (110, 102981), (115, 102960), (116, 102957),

Gene: Bruin_129 Start: 69850, Stop: 69392, Start Num: 52

Candidate Starts for Bruin_129:

(Start: 52 @69850 has 86 MA's), (61, 69811), (65, 69781), (90, 69631), (93, 69610), (94, 69604), (98, 69562), (102, 69490), (103, 69481), (104, 69469), (110, 69430), (116, 69406), (118, 69403),

Gene: Buck_132 Start: 71751, Stop: 71209, Start Num: 35

Candidate Starts for Buck_132:

(32, 71808), (33, 71802), (Start: 35 @71751 has 35 MA's), (Start: 50 @71679 has 1 MA's), (59, 71640), (Start: 60 @71637 has 2 MA's), (65, 71598), (90, 71448), (93, 71427), (94, 71421), (98, 71379), (102, 71307), (103, 71298), (104, 71286), (110, 71247), (116, 71223), (118, 71220),

Gene: Budgie_138 Start: 71929, Stop: 71465, Start Num: 52

Candidate Starts for Budgie_138:

(Start: 52 @71929 has 86 MA's), (65, 71860), (66, 71857), (90, 71710), (94, 71683), (102, 71563), (106, 71533), (110, 71503), (116, 71479), (118, 71476),

Gene: BugsBunny_131 Start: 71165, Stop: 70707, Start Num: 52
Candidate Starts for BugsBunny_131:
(Start: 52 @71165 has 86 MA's), (61, 71126), (65, 71096), (90, 70946), (93, 70925), (94, 70919), (98, 70877), (102, 70805), (103, 70796), (104, 70784), (110, 70745), (116, 70721), (118, 70718),

Gene: Cactus_140 Start: 71263, Stop: 70799, Start Num: 52
Candidate Starts for Cactus_140:
(Start: 52 @71263 has 86 MA's), (61, 71224), (65, 71194), (90, 71044), (94, 71017), (102, 70897), (106, 70867), (110, 70837), (116, 70813), (118, 70810),

Gene: ChewyVIII_93 Start: 67567, Stop: 68139, Start Num: 38
Candidate Starts for ChewyVIII_93:
(34, 67540), (Start: 38 @67567 has 1 MA's), (39, 67573), (69, 67732), (75, 67771), (94, 67894), (99, 67966), (101, 67972), (120, 68125),

Gene: ChosenOne_133 Start: 70642, Stop: 70184, Start Num: 52
Candidate Starts for ChosenOne_133:
(Start: 52 @70642 has 86 MA's), (61, 70603), (65, 70573), (90, 70423), (93, 70402), (94, 70396), (98, 70354), (102, 70282), (104, 70261), (110, 70222), (116, 70198), (118, 70195),

Gene: ChotaBhai_136 Start: 71428, Stop: 70970, Start Num: 52
Candidate Starts for ChotaBhai_136:
(Start: 52 @71428 has 86 MA's), (61, 71389), (65, 71359), (90, 71209), (93, 71188), (94, 71182), (98, 71140), (102, 71068), (103, 71059), (104, 71047), (110, 71008), (116, 70984), (118, 70981),

Gene: Cjw1_130 Start: 71844, Stop: 71386, Start Num: 52
Candidate Starts for Cjw1_130:
(Start: 52 @71844 has 86 MA's), (61, 71805), (65, 71775), (90, 71625), (93, 71604), (94, 71598), (98, 71556), (102, 71484), (104, 71463), (110, 71424), (116, 71400), (118, 71397),

Gene: Command613_134 Start: 71208, Stop: 70744, Start Num: 52
Candidate Starts for Command613_134:
(Start: 52 @71208 has 86 MA's), (61, 71169), (65, 71139), (90, 70989), (94, 70962), (102, 70842), (103, 70833), (104, 70821), (110, 70782), (116, 70758), (118, 70755),

Gene: Contagion_128 Start: 70212, Stop: 69754, Start Num: 52
Candidate Starts for Contagion_128:
(Start: 52 @70212 has 86 MA's), (61, 70173), (65, 70143), (90, 69993), (93, 69972), (94, 69966), (98, 69924), (102, 69852), (103, 69843), (104, 69831), (110, 69792), (116, 69768), (118, 69765),

Gene: Cookies_133 Start: 71754, Stop: 71278, Start Num: 54
Candidate Starts for Cookies_133:
(Start: 54 @71754 has 31 MA's), (61, 71715), (65, 71685), (90, 71535), (94, 71508), (102, 71376), (110, 71316), (116, 71292), (118, 71289),

Gene: Courthouse_230 Start: 106688, Stop: 106236, Start Num: 54
Candidate Starts for Courthouse_230:
(49, 106700), (Start: 54 @106688 has 31 MA's), (65, 106622), (71, 106595), (85, 106496), (90, 106472), (94, 106445), (98, 106403), (102, 106331), (103, 106322), (110, 106271), (115, 106250), (116, 106247),

Gene: CrystalP_132 Start: 71706, Stop: 71248, Start Num: 52
Candidate Starts for CrystalP_132:

(Start: 52 @71706 has 86 MA's), (61, 71667), (65, 71637), (90, 71487), (93, 71466), (94, 71460), (98, 71418), (102, 71346), (103, 71337), (104, 71325), (110, 71286), (116, 71262), (118, 71259),

Gene: Czyszczone1_131 Start: 70290, Stop: 69748, Start Num: 35

Candidate Starts for Czyszczone1_131:

(32, 70347), (33, 70341), (Start: 35 @70290 has 35 MA's), (Start: 50 @70218 has 1 MA's), (59, 70179), (Start: 60 @70176 has 2 MA's), (65, 70137), (90, 69987), (94, 69960), (98, 69918), (102, 69846), (103, 69837), (104, 69825), (110, 69786), (116, 69762), (118, 69759),

Gene: Daikon_134 Start: 70511, Stop: 70047, Start Num: 52

Candidate Starts for Daikon_134:

(Start: 52 @70511 has 86 MA's), (61, 70472), (65, 70442), (90, 70292), (94, 70265), (102, 70145), (103, 70136), (104, 70124), (110, 70085), (116, 70061), (118, 70058),

Gene: Dalilpop_91 Start: 64399, Stop: 64968, Start Num: 36

Candidate Starts for Dalilpop_91:

(Start: 36 @64399 has 16 MA's), (Start: 47 @64462 has 1 MA's), (62, 64525), (71, 64579), (80, 64639), (87, 64702), (88, 64705), (93, 64735), (94, 64741), (98, 64783),

Gene: DmpstrDiver_226 Start: 107322, Stop: 106870, Start Num: 54

Candidate Starts for DmpstrDiver_226:

(49, 107334), (Start: 54 @107322 has 31 MA's), (65, 107256), (71, 107229), (85, 107130), (90, 107106), (94, 107079), (98, 107037), (102, 106965), (103, 106956), (110, 106905), (115, 106884), (116, 106881),

Gene: DoctorDiddles_130 Start: 70165, Stop: 69707, Start Num: 52

Candidate Starts for DoctorDiddles_130:

(Start: 52 @70165 has 86 MA's), (61, 70126), (65, 70096), (90, 69946), (93, 69925), (94, 69919), (98, 69877), (102, 69805), (103, 69796), (104, 69784), (110, 69745), (116, 69721), (118, 69718),

Gene: Dove_210 Start: 103730, Stop: 103272, Start Num: 54

Candidate Starts for Dove_210:

(49, 103742), (Start: 54 @103730 has 31 MA's), (65, 103664), (71, 103637), (85, 103538), (90, 103514), (94, 103487), (102, 103367), (103, 103358), (110, 103307), (115, 103286),

Gene: DrDrey_135 Start: 72902, Stop: 72444, Start Num: 52

Candidate Starts for DrDrey_135:

(Start: 52 @72902 has 86 MA's), (61, 72863), (65, 72833), (90, 72683), (93, 72662), (94, 72656), (98, 72614), (102, 72542), (103, 72533), (104, 72521), (110, 72482), (116, 72458), (118, 72455),

Gene: Duke13_229 Start: 108040, Stop: 107582, Start Num: 54

Candidate Starts for Duke13_229:

(49, 108052), (Start: 54 @108040 has 31 MA's), (65, 107974), (71, 107947), (85, 107848), (90, 107824), (93, 107803), (94, 107797), (102, 107677), (103, 107668), (109, 107620), (110, 107617), (115, 107596), (116, 107593),

Gene: Dumbo_133 Start: 70853, Stop: 70395, Start Num: 52

Candidate Starts for Dumbo_133:

(Start: 52 @70853 has 86 MA's), (61, 70814), (65, 70784), (90, 70634), (93, 70613), (94, 70607), (98, 70565), (102, 70493), (104, 70472), (110, 70433), (116, 70409), (118, 70406),

Gene: Dusk_133 Start: 71329, Stop: 70871, Start Num: 52

Candidate Starts for Dusk_133:

(Start: 52 @71329 has 86 MA's), (61, 71290), (65, 71260), (90, 71110), (93, 71089), (94, 71083), (98, 71041), (102, 70969), (103, 70960), (104, 70948), (110, 70909), (116, 70885), (118, 70882),

Gene: Easy2Say_133 Start: 71259, Stop: 70711, Start Num: 35

Candidate Starts for Easy2Say_133:

(32, 71316), (33, 71310), (Start: 35 @71259 has 35 MA's), (Start: 50 @71187 has 1 MA's), (59, 71148), (Start: 60 @71145 has 2 MA's), (65, 71106), (90, 70956), (94, 70929), (102, 70809), (110, 70749), (116, 70725), (118, 70722),

Gene: Elite2014_132 Start: 70641, Stop: 70183, Start Num: 52

Candidate Starts for Elite2014_132:

(Start: 52 @70641 has 86 MA's), (61, 70602), (65, 70572), (90, 70422), (93, 70401), (94, 70395), (98, 70353), (102, 70281), (104, 70260), (110, 70221), (116, 70197), (118, 70194),

Gene: Elph10_130 Start: 69960, Stop: 69496, Start Num: 52

Candidate Starts for Elph10_130:

(Start: 52 @69960 has 86 MA's), (61, 69921), (65, 69891), (90, 69741), (94, 69714), (102, 69594), (103, 69585), (104, 69573), (110, 69534), (116, 69510), (118, 69507),

Gene: Emmina_132 Start: 70211, Stop: 69663, Start Num: 35

Candidate Starts for Emmina_132:

(Start: 35 @70211 has 35 MA's), (59, 70100), (Start: 60 @70097 has 2 MA's), (65, 70058), (90, 69908), (94, 69881), (102, 69761), (106, 69731), (110, 69701), (116, 69677), (118, 69674),

Gene: Ennea_94 Start: 64628, Stop: 65194, Start Num: 36

Candidate Starts for Ennea_94:

(1, 64034), (2, 64097), (3, 64100), (5, 64130), (7, 64142), (11, 64199), (23, 64379), (Start: 36 @64628 has 16 MA's), (44, 64658), (Start: 47 @64688 has 1 MA's), (65, 64778), (70, 64802), (79, 64856), (81, 64865), (88, 64925), (92, 64949), (93, 64955), (94, 64961), (108, 65117),

Gene: EricMillard_223 Start: 108742, Stop: 108284, Start Num: 54

Candidate Starts for EricMillard_223:

(49, 108754), (Start: 54 @108742 has 31 MA's), (65, 108676), (71, 108649), (85, 108550), (90, 108526), (93, 108505), (94, 108499), (102, 108379), (103, 108370), (109, 108322), (110, 108319), (115, 108298), (116, 108295),

Gene: Eureka_131 Start: 71139, Stop: 70579, Start Num: 35

Candidate Starts for Eureka_131:

(32, 71196), (33, 71190), (Start: 35 @71139 has 35 MA's), (Start: 50 @71067 has 1 MA's), (59, 71028), (Start: 60 @71025 has 2 MA's), (65, 70986), (90, 70836), (93, 70815), (94, 70809), (102, 70677), (103, 70668), (104, 70656), (110, 70617), (116, 70593), (118, 70590),

Gene: FairyPath_134 Start: 71530, Stop: 71072, Start Num: 52

Candidate Starts for FairyPath_134:

(Start: 52 @71530 has 86 MA's), (61, 71491), (65, 71461), (90, 71311), (93, 71290), (94, 71284), (98, 71242), (102, 71170), (103, 71161), (104, 71149), (110, 71110), (116, 71086), (118, 71083),

Gene: Filch_134 Start: 70782, Stop: 70324, Start Num: 52

Candidate Starts for Filch_134:

(Start: 52 @70782 has 86 MA's), (61, 70743), (65, 70713), (90, 70563), (93, 70542), (94, 70536), (98, 70494), (102, 70422), (103, 70413), (104, 70401), (110, 70362), (116, 70338), (118, 70335),

Gene: FireRed_135 Start: 71291, Stop: 70833, Start Num: 52

Candidate Starts for FireRed_135:

(Start: 52 @71291 has 86 MA's), (65, 71222), (66, 71219), (90, 71072), (94, 71045), (98, 71003), (102, 70931), (103, 70922), (104, 70910), (110, 70871), (116, 70847), (118, 70844),

Gene: Flapper_91 Start: 64268, Stop: 64843, Start Num: 36

Candidate Starts for Flapper_91:

(16, 63911), (17, 63920), (18, 63959), (19, 63971), (21, 63995), (22, 64004), (26, 64073), (Start: 36 @64268 has 16 MA's), (Start: 47 @64331 has 1 MA's), (62, 64394), (71, 64448), (80, 64508), (87, 64571), (88, 64574), (92, 64598), (93, 64604), (94, 64610), (98, 64652), (110, 64784),

Gene: Float294_88 Start: 64522, Stop: 65091, Start Num: 36

Candidate Starts for Float294_88:

(23, 64273), (27, 64330), (Start: 36 @64522 has 16 MA's), (56, 64609), (63, 64657), (64, 64666), (65, 64675), (67, 64690), (70, 64699), (79, 64753), (88, 64822), (92, 64846), (93, 64852), (94, 64858), (108, 65014),

Gene: Flypotenuse_127 Start: 70080, Stop: 69622, Start Num: 52

Candidate Starts for Flypotenuse_127:

(Start: 52 @70080 has 86 MA's), (61, 70041), (65, 70011), (90, 69861), (93, 69840), (94, 69834), (98, 69792), (102, 69720), (103, 69711), (104, 69699), (110, 69660), (116, 69636), (118, 69633),

Gene: FoghornLeghorn_130 Start: 69730, Stop: 69272, Start Num: 52

Candidate Starts for FoghornLeghorn_130:

(Start: 52 @69730 has 86 MA's), (61, 69691), (65, 69661), (90, 69511), (93, 69490), (94, 69484), (98, 69442), (102, 69370), (103, 69361), (104, 69349), (110, 69310), (116, 69286), (118, 69283),

Gene: Fury_95 Start: 62225, Stop: 62755, Start Num: 37

Candidate Starts for Fury_95:

(Start: 37 @62225 has 3 MA's), (Start: 52 @62297 has 86 MA's), (65, 62345), (82, 62444), (85, 62477), (90, 62501), (92, 62516), (100, 62603), (107, 62681),

Gene: GRU1_77 Start: 55846, Stop: 56415, Start Num: 36

Candidate Starts for GRU1_77:

(Start: 36 @55846 has 16 MA's), (Start: 47 @55909 has 1 MA's), (62, 55972), (71, 56026), (79, 56083), (80, 56086), (87, 56149), (88, 56152), (93, 56182), (94, 56188), (98, 56230), (102, 56302),

Gene: GTE5_76 Start: 56739, Stop: 57425, Start Num: 36

Candidate Starts for GTE5_76:

(18, 56430), (22, 56475), (Start: 36 @56739 has 16 MA's), (Start: 47 @56802 has 1 MA's), (62, 56865), (71, 56919), (80, 56979), (87, 57042), (88, 57045), (92, 57069), (93, 57075), (94, 57081), (98, 57123), (102, 57195), (113, 57264), (121, 57360),

Gene: Gator_134 Start: 71620, Stop: 71162, Start Num: 52

Candidate Starts for Gator_134:

(Start: 52 @71620 has 86 MA's), (61, 71581), (65, 71551), (90, 71401), (93, 71380), (94, 71374), (98, 71332), (102, 71260), (103, 71251), (104, 71239), (110, 71200), (116, 71176), (118, 71173),

Gene: Gemini_137 Start: 71310, Stop: 70762, Start Num: 35

Candidate Starts for Gemini_137:

(32, 71367), (33, 71361), (Start: 35 @71310 has 35 MA's), (Start: 50 @71238 has 1 MA's), (59, 71199), (Start: 60 @71196 has 2 MA's), (65, 71157), (90, 71007), (94, 70980), (102, 70860), (110, 70800), (116, 70776), (118, 70773),

Gene: Glexan_136 Start: 71770, Stop: 71312, Start Num: 52

Candidate Starts for Glexan_136:

(Start: 52 @71770 has 86 MA's), (61, 71731), (65, 71701), (90, 71551), (93, 71530), (94, 71524), (98, 71482), (102, 71410), (103, 71401), (104, 71389), (110, 71350), (116, 71326), (118, 71323),

Gene: Goku_130 Start: 71448, Stop: 70888, Start Num: 35

Candidate Starts for Goku_130:

(32, 71505), (33, 71499), (Start: 35 @71448 has 35 MA's), (Start: 50 @71376 has 1 MA's), (59, 71337), (Start: 60 @71334 has 2 MA's), (65, 71295), (90, 71145), (93, 71124), (94, 71118), (102, 70986), (103, 70977), (104, 70965), (110, 70926), (116, 70902), (118, 70899),

Gene: GoldenSpark_136 Start: 70793, Stop: 70245, Start Num: 35

Candidate Starts for GoldenSpark_136:

(32, 70850), (33, 70844), (Start: 35 @70793 has 35 MA's), (Start: 50 @70721 has 1 MA's), (59, 70682), (Start: 60 @70679 has 2 MA's), (65, 70640), (90, 70490), (94, 70463), (102, 70343), (110, 70283), (116, 70259), (118, 70256),

Gene: Goldilocks_137 Start: 71389, Stop: 70841, Start Num: 35

Candidate Starts for Goldilocks_137:

(32, 71446), (33, 71440), (Start: 35 @71389 has 35 MA's), (Start: 50 @71317 has 1 MA's), (59, 71278), (Start: 60 @71275 has 2 MA's), (65, 71236), (90, 71086), (94, 71059), (102, 70939), (110, 70879), (116, 70855), (118, 70852),

Gene: Gonephishing_222 Start: 106099, Stop: 105629, Start Num: 49

Candidate Starts for Gonephishing_222:

(49, 106099), (Start: 54 @106087 has 31 MA's), (65, 106021), (71, 105994), (85, 105895), (90, 105871), (93, 105850), (94, 105844), (102, 105724), (103, 105715), (110, 105664), (115, 105643), (116, 105640),

Gene: GooberAzure_134 Start: 70793, Stop: 70245, Start Num: 35

Candidate Starts for GooberAzure_134:

(32, 70850), (33, 70844), (Start: 35 @70793 has 35 MA's), (Start: 50 @70721 has 1 MA's), (59, 70682), (Start: 60 @70679 has 2 MA's), (65, 70640), (90, 70490), (94, 70463), (102, 70343), (110, 70283), (116, 70259), (118, 70256),

Gene: Greep_136 Start: 71982, Stop: 71524, Start Num: 52

Candidate Starts for Greep_136:

(Start: 52 @71982 has 86 MA's), (61, 71943), (65, 71913), (90, 71763), (93, 71742), (94, 71736), (98, 71694), (102, 71622), (103, 71613), (104, 71601), (110, 71562), (116, 71538), (118, 71535),

Gene: Halley_229 Start: 107495, Stop: 107037, Start Num: 54

Candidate Starts for Halley_229:

(49, 107507), (Start: 54 @107495 has 31 MA's), (65, 107429), (71, 107402), (90, 107279), (93, 107258), (94, 107252), (102, 107132), (103, 107123), (110, 107072), (115, 107051), (116, 107048),

Gene: HanKaySha_131 Start: 70747, Stop: 70205, Start Num: 35

Candidate Starts for HanKaySha_131:

(32, 70804), (33, 70798), (Start: 35 @70747 has 35 MA's), (Start: 50 @70675 has 1 MA's), (59, 70636), (Start: 60 @70633 has 2 MA's), (65, 70594), (90, 70444), (93, 70423), (94, 70417), (98, 70375), (102, 70303), (103, 70294), (104, 70282), (110, 70243), (116, 70219), (118, 70216),

Gene: Hannaconda_217 Start: 107027, Stop: 106569, Start Num: 54

Candidate Starts for Hannaconda_217:

(43, 107078), (51, 107036), (Start: 54 @107027 has 31 MA's), (65, 106961), (71, 106934), (85, 106835), (90, 106811), (94, 106784), (102, 106664), (103, 106655), (110, 106604), (115, 106583),

Gene: Harella_138 Start: 72286, Stop: 71828, Start Num: 52

Candidate Starts for Harella_138:

(Start: 52 @72286 has 86 MA's), (61, 72247), (65, 72217), (90, 72067), (93, 72046), (94, 72040), (98, 71998), (102, 71926), (103, 71917), (104, 71905), (110, 71866), (116, 71842), (118, 71839),

Gene: Henry_134 Start: 71571, Stop: 71113, Start Num: 52

Candidate Starts for Henry_134:

(Start: 52 @71571 has 86 MA's), (61, 71532), (65, 71502), (90, 71352), (93, 71331), (94, 71325), (98, 71283), (102, 71211), (103, 71202), (104, 71190), (110, 71151), (116, 71127), (118, 71124),

Gene: Highbury_128 Start: 69055, Stop: 68591, Start Num: 52

Candidate Starts for Highbury_128:

(Start: 52 @69055 has 86 MA's), (61, 69016), (65, 68986), (90, 68836), (94, 68809), (102, 68689), (106, 68659), (110, 68629), (116, 68605), (118, 68602),

Gene: HokkenD_217 Start: 108333, Stop: 107881, Start Num: 54

Candidate Starts for HokkenD_217:

(49, 108345), (Start: 54 @108333 has 31 MA's), (65, 108267), (71, 108240), (85, 108141), (90, 108117), (94, 108090), (98, 108048), (102, 107976), (103, 107967), (110, 107916), (115, 107895), (116, 107892),

Gene: Holt_138 Start: 71715, Stop: 71239, Start Num: 54

Candidate Starts for Holt_138:

(Start: 54 @71715 has 31 MA's), (65, 71646), (66, 71643), (90, 71496), (94, 71469), (102, 71337), (110, 71277), (116, 71253), (118, 71250),

Gene: HomeFry_92 Start: 61283, Stop: 61840, Start Num: 37

Candidate Starts for HomeFry_92:

(27, 61085), (Start: 37 @61283 has 3 MA's), (48, 61343), (65, 61433), (74, 61484), (75, 61487), (86, 61583), (91, 61601), (96, 61661), (112, 61799), (119, 61829),

Gene: Hoonter_135 Start: 71202, Stop: 70738, Start Num: 52

Candidate Starts for Hoonter_135:

(Start: 52 @71202 has 86 MA's), (61, 71163), (65, 71133), (90, 70983), (94, 70956), (102, 70836), (106, 70806), (110, 70776), (116, 70752), (118, 70749),

Gene: Hokey_131 Start: 71209, Stop: 70751, Start Num: 52

Candidate Starts for Hokey_131:

(Start: 52 @71209 has 86 MA's), (61, 71170), (65, 71140), (90, 70990), (93, 70969), (94, 70963), (98, 70921), (102, 70849), (103, 70840), (104, 70828), (110, 70789), (116, 70765), (118, 70762),

Gene: HubbaBubba_79 Start: 58420, Stop: 59040, Start Num: 36

Candidate Starts for HubbaBubba_79:

(30, 58348), (Start: 36 @58420 has 16 MA's), (53, 58486), (65, 58543), (67, 58558), (94, 58720), (98, 58762), (105, 58861),

Gene: HufflyPuff_134 Start: 71517, Stop: 71059, Start Num: 52

Candidate Starts for HufflyPuff_134:

(Start: 52 @71517 has 86 MA's), (65, 71448), (66, 71445), (90, 71298), (94, 71271), (98, 71229), (102, 71157), (103, 71148), (104, 71136), (110, 71097), (116, 71073), (118, 71070),

Gene: Hughesyang_227 Start: 108297, Stop: 107839, Start Num: 54

Candidate Starts for Hughesyang_227:

(49, 108309), (Start: 54 @108297 has 31 MA's), (65, 108231), (71, 108204), (85, 108105), (90, 108081), (93, 108060), (94, 108054), (102, 107934), (103, 107925), (109, 107877), (110, 107874), (115, 107853), (116, 107850),

Gene: IDyn_81 Start: 59074, Stop: 59697, Start Num: 36

Candidate Starts for IDyn_81:

(24, 58867), (30, 59002), (Start: 36 @59074 has 16 MA's), (53, 59140), (65, 59197), (70, 59221), (94, 59377), (98, 59419), (99, 59443), (106, 59521),

Gene: IHOP_136 Start: 71145, Stop: 70687, Start Num: 52

Candidate Starts for IHOP_136:

(Start: 52 @71145 has 86 MA's), (61, 71106), (65, 71076), (90, 70926), (93, 70905), (94, 70899), (98, 70857), (102, 70785), (103, 70776), (104, 70764), (110, 70725), (116, 70701), (118, 70698),

Gene: Icee_137 Start: 71021, Stop: 70563, Start Num: 52

Candidate Starts for Icee_137:

(Start: 52 @71021 has 86 MA's), (61, 70982), (65, 70952), (90, 70802), (93, 70781), (94, 70775), (98, 70733), (102, 70661), (103, 70652), (104, 70640), (110, 70601), (116, 70577), (118, 70574),

Gene: Inca_131 Start: 69165, Stop: 68707, Start Num: 52

Candidate Starts for Inca_131:

(Start: 52 @69165 has 86 MA's), (61, 69126), (65, 69096), (90, 68946), (93, 68925), (94, 68919), (98, 68877), (102, 68805), (103, 68796), (104, 68784), (110, 68745), (116, 68721), (118, 68718),

Gene: JeTaime_130 Start: 70681, Stop: 70223, Start Num: 52

Candidate Starts for JeTaime_130:

(Start: 52 @70681 has 86 MA's), (61, 70642), (65, 70612), (90, 70462), (94, 70435), (98, 70393), (102, 70321), (103, 70312), (104, 70300), (110, 70261), (116, 70237), (118, 70234),

Gene: JuicyJay_221 Start: 108561, Stop: 108109, Start Num: 54

Candidate Starts for JuicyJay_221:

(49, 108573), (Start: 54 @108561 has 31 MA's), (65, 108495), (71, 108468), (85, 108369), (90, 108345), (94, 108318), (98, 108276), (102, 108204), (103, 108195), (110, 108144), (115, 108123), (116, 108120),

Gene: Kanye_128 Start: 70808, Stop: 70266, Start Num: 35

Candidate Starts for Kanye_128:

(32, 70865), (33, 70859), (Start: 35 @70808 has 35 MA's), (Start: 50 @70736 has 1 MA's), (59, 70697), (Start: 60 @70694 has 2 MA's), (65, 70655), (90, 70505), (93, 70484), (94, 70478), (98, 70436), (102, 70364), (103, 70355), (104, 70343), (110, 70304), (116, 70280), (118, 70277),

Gene: KashFlow_219 Start: 106921, Stop: 106463, Start Num: 54

Candidate Starts for KashFlow_219:

(43, 106972), (51, 106930), (Start: 54 @106921 has 31 MA's), (65, 106855), (71, 106828), (85, 106729), (90, 106705), (94, 106678), (102, 106558), (103, 106549), (110, 106498), (115, 106477),

Gene: Kimchi_137 Start: 71514, Stop: 70966, Start Num: 35

Candidate Starts for Kimchi_137:

(32, 71571), (33, 71565), (Start: 35 @71514 has 35 MA's), (Start: 50 @71442 has 1 MA's), (59, 71403), (Start: 60 @71400 has 2 MA's), (65, 71361), (90, 71211), (94, 71184), (102, 71064), (110, 71004),

(116, 70980), (118, 70977),

Gene: Kostya_133 Start: 71247, Stop: 70789, Start Num: 52

Candidate Starts for Kostya_133:

(Start: 52 @71247 has 86 MA's), (61, 71208), (65, 71178), (90, 71028), (93, 71007), (94, 71001), (98, 70959), (102, 70887), (103, 70878), (104, 70866), (110, 70827), (116, 70803), (118, 70800),

Gene: Lilac_130 Start: 71659, Stop: 71183, Start Num: 54

Candidate Starts for Lilac_130:

(Start: 54 @71659 has 31 MA's), (61, 71620), (65, 71590), (90, 71440), (94, 71413), (102, 71281), (110, 71221), (116, 71197), (118, 71194),

Gene: Lilizi_132 Start: 71021, Stop: 70473, Start Num: 35

Candidate Starts for Lilizi_132:

(32, 71078), (33, 71072), (Start: 35 @71021 has 35 MA's), (Start: 50 @70949 has 1 MA's), (59, 70910), (Start: 60 @70907 has 2 MA's), (65, 70868), (90, 70718), (94, 70691), (102, 70571), (110, 70511), (116, 70487), (118, 70484),

Gene: Lilpickle_132 Start: 70641, Stop: 70183, Start Num: 52

Candidate Starts for Lilpickle_132:

(Start: 52 @70641 has 86 MA's), (61, 70602), (65, 70572), (90, 70422), (93, 70401), (94, 70395), (98, 70353), (102, 70281), (104, 70260), (110, 70221), (116, 70197), (118, 70194),

Gene: Liveloughbron_131 Start: 71651, Stop: 71193, Start Num: 52

Candidate Starts for Liveloughbron_131:

(Start: 52 @71651 has 86 MA's), (61, 71612), (65, 71582), (90, 71432), (93, 71411), (94, 71405), (98, 71363), (102, 71291), (103, 71282), (104, 71270), (110, 71231), (116, 71207), (118, 71204),

Gene: Lollipop1437_89 Start: 64307, Stop: 64873, Start Num: 36

Candidate Starts for Lollipop1437_89:

(Start: 36 @64307 has 16 MA's), (44, 64337), (46, 64358), (65, 64457), (70, 64481), (81, 64544), (83, 64565), (88, 64604), (92, 64628), (93, 64634), (94, 64640), (108, 64796),

Gene: MISSy_134 Start: 71556, Stop: 71098, Start Num: 52

Candidate Starts for MISSy_134:

(Start: 52 @71556 has 86 MA's), (61, 71517), (65, 71487), (90, 71337), (93, 71316), (94, 71310), (98, 71268), (102, 71196), (103, 71187), (104, 71175), (110, 71136), (116, 71112), (118, 71109),

Gene: MPhalcon_133 Start: 70974, Stop: 70516, Start Num: 52

Candidate Starts for MPhalcon_133:

(Start: 52 @70974 has 86 MA's), (61, 70935), (65, 70905), (90, 70755), (93, 70734), (94, 70728), (98, 70686), (102, 70614), (103, 70605), (104, 70593), (110, 70554), (116, 70530), (118, 70527),

Gene: MadamMonkfish_132 Start: 70650, Stop: 70192, Start Num: 52

Candidate Starts for MadamMonkfish_132:

(Start: 52 @70650 has 86 MA's), (61, 70611), (65, 70581), (90, 70431), (93, 70410), (94, 70404), (98, 70362), (102, 70290), (103, 70281), (104, 70269), (110, 70230), (116, 70206), (118, 70203),

Gene: Manda_133 Start: 71091, Stop: 70615, Start Num: 54

Candidate Starts for Manda_133:

(Start: 54 @71091 has 31 MA's), (65, 71022), (66, 71019), (90, 70872), (94, 70845), (102, 70713), (110, 70653), (116, 70629), (118, 70626),

Gene: Marietta_85 Start: 59747, Stop: 60280, Start Num: 36

Candidate Starts for Marietta_85:

(3, 59228), (8, 59279), (9, 59300), (10, 59321), (12, 59333), (13, 59342), (30, 59675), (Start: 36 @59747 has 16 MA's), (53, 59813), (65, 59873), (94, 60053), (98, 60095), (117, 60245),

Gene: Marshmallow_133 Start: 71835, Stop: 71377, Start Num: 52

Candidate Starts for Marshmallow_133:

(Start: 52 @71835 has 86 MA's), (61, 71796), (65, 71766), (90, 71616), (93, 71595), (94, 71589), (98, 71547), (102, 71475), (103, 71466), (104, 71454), (110, 71415), (116, 71391), (118, 71388),

Gene: Maxxinista_134 Start: 70603, Stop: 70145, Start Num: 52

Candidate Starts for Maxxinista_134:

(Start: 52 @70603 has 86 MA's), (61, 70564), (65, 70534), (90, 70384), (93, 70363), (94, 70357), (98, 70315), (102, 70243), (103, 70234), (104, 70222), (110, 70183), (116, 70159), (118, 70156),

Gene: MerCougar_93 Start: 67221, Stop: 67787, Start Num: 41

Candidate Starts for MerCougar_93:

(40, 67218), (Start: 41 @67221 has 3 MA's), (45, 67254), (Start: 57 @67296 has 1 MA's), (79, 67428), (92, 67521), (93, 67527), (94, 67533), (102, 67647), (104, 67668),

Gene: Mindy_135 Start: 70999, Stop: 70535, Start Num: 52

Candidate Starts for Mindy_135:

(Start: 52 @70999 has 86 MA's), (61, 70960), (65, 70930), (90, 70780), (94, 70753), (102, 70633), (103, 70624), (104, 70612), (110, 70573), (116, 70549), (118, 70546),

Gene: Minerva_224 Start: 105833, Stop: 105375, Start Num: 54

Candidate Starts for Minerva_224:

(49, 105845), (Start: 54 @105833 has 31 MA's), (65, 105767), (71, 105740), (90, 105617), (93, 105596), (94, 105590), (102, 105470), (103, 105461), (110, 105410), (115, 105389), (116, 105386),

Gene: Miniwave_125 Start: 70331, Stop: 69789, Start Num: 35

Candidate Starts for Miniwave_125:

(32, 70388), (33, 70382), (Start: 35 @70331 has 35 MA's), (Start: 50 @70259 has 1 MA's), (59, 70220), (Start: 60 @70217 has 2 MA's), (65, 70178), (90, 70028), (93, 70007), (94, 70001), (98, 69959), (102, 69887), (103, 69878), (104, 69866), (110, 69827), (116, 69803), (118, 69800),

Gene: Misfit_132 Start: 71848, Stop: 71390, Start Num: 52

Candidate Starts for Misfit_132:

(Start: 52 @71848 has 86 MA's), (61, 71809), (65, 71779), (90, 71629), (93, 71608), (94, 71602), (98, 71560), (102, 71488), (103, 71479), (104, 71467), (110, 71428), (116, 71404), (118, 71401),

Gene: Moldemort_134 Start: 70901, Stop: 70353, Start Num: 35

Candidate Starts for Moldemort_134:

(32, 70958), (33, 70952), (Start: 35 @70901 has 35 MA's), (Start: 50 @70829 has 1 MA's), (59, 70790), (Start: 60 @70787 has 2 MA's), (65, 70748), (90, 70598), (94, 70571), (102, 70451), (110, 70391), (116, 70367), (118, 70364),

Gene: MollyToe_126 Start: 68627, Stop: 68169, Start Num: 52

Candidate Starts for MollyToe_126:

(Start: 52 @68627 has 86 MA's), (61, 68588), (65, 68558), (90, 68408), (93, 68387), (94, 68381), (98, 68339), (102, 68267), (103, 68258), (104, 68246), (110, 68207), (116, 68183), (118, 68180),

Gene: Mosby_129 Start: 70212, Stop: 69754, Start Num: 52

Candidate Starts for Mosby_129:

(Start: 52 @70212 has 86 MA's), (61, 70173), (65, 70143), (90, 69993), (93, 69972), (94, 69966), (98, 69924), (102, 69852), (103, 69843), (104, 69831), (110, 69792), (116, 69768), (118, 69765),

Gene: Murica_136 Start: 72551, Stop: 72093, Start Num: 52

Candidate Starts for Murica_136:

(Start: 52 @72551 has 86 MA's), (65, 72482), (66, 72479), (90, 72332), (94, 72305), (98, 72263), (102, 72191), (103, 72182), (104, 72170), (110, 72131), (116, 72107), (118, 72104),

Gene: Murphy_131 Start: 70977, Stop: 70519, Start Num: 52

Candidate Starts for Murphy_131:

(Start: 52 @70977 has 86 MA's), (61, 70938), (65, 70908), (90, 70758), (93, 70737), (94, 70731), (98, 70689), (102, 70617), (103, 70608), (104, 70596), (110, 70557), (116, 70533), (118, 70530),

Gene: Myrale_132 Start: 71502, Stop: 71032, Start Num: 50

Candidate Starts for Myrale_132:

(32, 71631), (33, 71625), (Start: 35 @71574 has 35 MA's), (Start: 50 @71502 has 1 MA's), (59, 71463), (Start: 60 @71460 has 2 MA's), (65, 71421), (90, 71271), (93, 71250), (94, 71244), (98, 71202), (102, 71130), (103, 71121), (104, 71109), (110, 71070), (116, 71046), (118, 71043),

Gene: NadineRae_85 Start: 59593, Stop: 60120, Start Num: 36

Candidate Starts for NadineRae_85:

(25, 59389), (28, 59416), (30, 59521), (Start: 36 @59593 has 16 MA's), (65, 59716), (94, 59896), (98, 59938), (99, 59962),

Gene: Nala_134 Start: 71263, Stop: 70805, Start Num: 52

Candidate Starts for Nala_134:

(Start: 52 @71263 has 86 MA's), (61, 71224), (65, 71194), (90, 71044), (93, 71023), (94, 71017), (98, 70975), (102, 70903), (104, 70882), (110, 70843), (116, 70819), (118, 70816),

Gene: Nekros_227 Start: 107688, Stop: 107230, Start Num: 54

Candidate Starts for Nekros_227:

(43, 107739), (51, 107697), (Start: 54 @107688 has 31 MA's), (65, 107622), (71, 107595), (85, 107496), (90, 107472), (94, 107445), (102, 107325), (103, 107316), (109, 107268), (110, 107265), (115, 107244), (116, 107241),

Gene: NelitzaMV_130 Start: 69306, Stop: 68842, Start Num: 52

Candidate Starts for NelitzaMV_130:

(Start: 52 @69306 has 86 MA's), (61, 69267), (65, 69237), (90, 69087), (94, 69060), (102, 68940), (103, 68931), (104, 68919), (110, 68880), (116, 68856), (118, 68853),

Gene: Nibley_216 Start: 102981, Stop: 102523, Start Num: 54

Candidate Starts for Nibley_216:

(43, 103032), (51, 102990), (Start: 54 @102981 has 31 MA's), (65, 102915), (71, 102888), (85, 102789), (90, 102765), (94, 102738), (102, 102618), (103, 102609), (110, 102558), (115, 102537), (116, 102534),

Gene: NihilNomen_228 Start: 106600, Stop: 106148, Start Num: 54

Candidate Starts for NihilNomen_228:

(49, 106612), (Start: 54 @106600 has 31 MA's), (65, 106534), (71, 106507), (85, 106408), (90, 106384), (94, 106357), (98, 106315), (102, 106243), (103, 106234), (110, 106183), (115, 106162), (116, 106159),

Gene: Nimrod_132 Start: 71762, Stop: 71304, Start Num: 52

Candidate Starts for Nimrod_132:

(Start: 52 @71762 has 86 MA's), (61, 71723), (65, 71693), (90, 71543), (93, 71522), (94, 71516), (98, 71474), (102, 71402), (103, 71393), (104, 71381), (110, 71342), (116, 71318), (118, 71315),

Gene: NoSleep_131 Start: 70046, Stop: 69612, Start Num: 60

Candidate Starts for NoSleep_131:

(32, 70217), (33, 70211), (Start: 35 @70160 has 35 MA's), (Start: 50 @70088 has 1 MA's), (59, 70049), (Start: 60 @70046 has 2 MA's), (65, 70007), (90, 69857), (94, 69830), (102, 69710), (103, 69701), (104, 69689), (110, 69650), (116, 69626), (118, 69623),

Gene: NonchalantPear_132 Start: 69886, Stop: 69338, Start Num: 35

Candidate Starts for NonchalantPear_132:

(32, 69943), (33, 69937), (Start: 35 @69886 has 35 MA's), (Start: 50 @69814 has 1 MA's), (59, 69775), (Start: 60 @69772 has 2 MA's), (65, 69733), (90, 69583), (94, 69556), (102, 69436), (110, 69376), (116, 69352), (118, 69349),

Gene: NosilaM_91 Start: 66138, Stop: 66605, Start Num: 57

Candidate Starts for NosilaM_91:

(40, 66060), (Start: 41 @66063 has 3 MA's), (Start: 57 @66138 has 1 MA's), (79, 66273), (92, 66366), (93, 66372), (94, 66378),

Gene: Omega_228 Start: 108207, Stop: 107749, Start Num: 54

Candidate Starts for Omega_228:

(43, 108258), (51, 108216), (Start: 54 @108207 has 31 MA's), (65, 108141), (71, 108114), (85, 108015), (90, 107991), (94, 107964), (102, 107844), (103, 107835), (110, 107784), (115, 107763), (116, 107760),

Gene: OrionPax_128 Start: 70208, Stop: 69750, Start Num: 52

Candidate Starts for OrionPax_128:

(Start: 52 @70208 has 86 MA's), (61, 70169), (65, 70139), (90, 69989), (93, 69968), (94, 69962), (98, 69920), (102, 69848), (103, 69839), (104, 69827), (110, 69788), (116, 69764), (118, 69761),

Gene: Outis_91 Start: 66496, Stop: 67062, Start Num: 41

Candidate Starts for Outis_91:

(40, 66493), (Start: 41 @66496 has 3 MA's), (45, 66529), (Start: 57 @66571 has 1 MA's), (79, 66703), (92, 66796), (93, 66802), (94, 66808), (102, 66922), (104, 66943),

Gene: PaddyBaddy_129 Start: 70245, Stop: 69787, Start Num: 52

Candidate Starts for PaddyBaddy_129:

(Start: 52 @70245 has 86 MA's), (61, 70206), (65, 70176), (90, 70026), (93, 70005), (94, 69999), (98, 69957), (102, 69885), (104, 69864), (110, 69825), (116, 69801), (118, 69798),

Gene: Palpatine_132 Start: 71768, Stop: 71310, Start Num: 52

Candidate Starts for Palpatine_132:

(Start: 52 @71768 has 86 MA's), (61, 71729), (65, 71699), (90, 71549), (93, 71528), (94, 71522), (98, 71480), (102, 71408), (103, 71399), (104, 71387), (110, 71348), (116, 71324), (118, 71321),

Gene: Paperbeatsrock_130 Start: 71009, Stop: 70467, Start Num: 35

Candidate Starts for Paperbeatsrock_130:

(32, 71066), (33, 71060), (Start: 35 @71009 has 35 MA's), (Start: 50 @70937 has 1 MA's), (59, 70898), (Start: 60 @70895 has 2 MA's), (65, 70856), (90, 70706), (93, 70685), (94, 70679), (98, 70637), (102, 70565), (103, 70556), (104, 70544), (110, 70505), (116, 70481), (118, 70478),

Gene: Pat3_131 Start: 70546, Stop: 69986, Start Num: 35

Candidate Starts for Pat3_131:

(32, 70603), (33, 70597), (Start: 35 @70546 has 35 MA's), (Start: 50 @70474 has 1 MA's), (59, 70435), (Start: 60 @70432 has 2 MA's), (65, 70393), (90, 70243), (93, 70222), (94, 70216), (102, 70084), (104, 70063), (110, 70024), (116, 70000), (118, 69997),

Gene: Patio_87 Start: 63521, Stop: 64090, Start Num: 36

Candidate Starts for Patio_87:

(23, 63272), (27, 63329), (Start: 36 @63521 has 16 MA's), (46, 63572), (63, 63656), (64, 63665), (65, 63674), (67, 63689), (70, 63698), (77, 63746), (79, 63752), (83, 63782), (88, 63821), (93, 63851), (94, 63857), (98, 63899), (108, 64013),

Gene: Pemberton_87 Start: 59994, Stop: 60527, Start Num: 36

Candidate Starts for Pemberton_87:

(28, 59817), (30, 59922), (Start: 36 @59994 has 16 MA's), (65, 60117), (94, 60297), (98, 60339), (100, 60366), (117, 60489),

Gene: Petra64142_134 Start: 71392, Stop: 70934, Start Num: 52

Candidate Starts for Petra64142_134:

(Start: 52 @71392 has 86 MA's), (61, 71353), (65, 71323), (90, 71173), (93, 71152), (94, 71146), (98, 71104), (102, 71032), (103, 71023), (104, 71011), (110, 70972), (116, 70948), (118, 70945),

Gene: Phaja_136 Start: 71150, Stop: 70692, Start Num: 52

Candidate Starts for Phaja_136:

(Start: 52 @71150 has 86 MA's), (61, 71111), (65, 71081), (90, 70931), (93, 70910), (94, 70904), (98, 70862), (102, 70790), (103, 70781), (104, 70769), (110, 70730), (116, 70706), (118, 70703),

Gene: Pharsalus_129 Start: 71149, Stop: 70607, Start Num: 35

Candidate Starts for Pharsalus_129:

(32, 71206), (33, 71200), (Start: 35 @71149 has 35 MA's), (Start: 50 @71077 has 1 MA's), (59, 71038), (Start: 60 @71035 has 2 MA's), (65, 70996), (90, 70846), (93, 70825), (94, 70819), (98, 70777), (102, 70705), (103, 70696), (104, 70684), (110, 70645), (116, 70621), (118, 70618),

Gene: PhatBacter_135 Start: 71291, Stop: 70833, Start Num: 52

Candidate Starts for PhatBacter_135:

(Start: 52 @71291 has 86 MA's), (65, 71222), (66, 71219), (90, 71072), (94, 71045), (98, 71003), (102, 70931), (103, 70922), (104, 70910), (110, 70871), (116, 70847), (118, 70844),

Gene: Phaux_134 Start: 71917, Stop: 71459, Start Num: 52

Candidate Starts for Phaux_134:

(Start: 52 @71917 has 86 MA's), (65, 71848), (66, 71845), (90, 71698), (94, 71671), (98, 71629), (102, 71557), (103, 71548), (104, 71536), (110, 71497), (116, 71473), (118, 71470),

Gene: Phoebus_224 Start: 109850, Stop: 109398, Start Num: 54

Candidate Starts for Phoebus_224:

(49, 109862), (Start: 54 @109850 has 31 MA's), (65, 109784), (71, 109757), (85, 109658), (90, 109634), (94, 109607), (98, 109565), (102, 109493), (103, 109484), (110, 109433), (115, 109412), (116, 109409),

Gene: Phrux_128 Start: 69995, Stop: 69537, Start Num: 52

Candidate Starts for Phrux_128:

(Start: 52 @69995 has 86 MA's), (61, 69956), (65, 69926), (90, 69776), (93, 69755), (94, 69749), (98, 69707), (102, 69635), (103, 69626), (104, 69614), (110, 69575), (116, 69551), (118, 69548),

Gene: Pleakley_95 Start: 62226, Stop: 62756, Start Num: 37

Candidate Starts for Pleakley_95:

(Start: 37 @62226 has 3 MA's), (Start: 52 @62298 has 86 MA's), (65, 62346), (82, 62445), (85, 62478), (90, 62502), (92, 62517), (100, 62604), (107, 62682),

Gene: Policronamos_133 Start: 71621, Stop: 71163, Start Num: 52

Candidate Starts for Policronamos_133:

(Start: 52 @71621 has 86 MA's), (65, 71552), (66, 71549), (90, 71402), (94, 71375), (98, 71333), (102, 71261), (103, 71252), (104, 71240), (110, 71201), (116, 71177), (118, 71174),

Gene: Porky_133 Start: 71114, Stop: 70680, Start Num: 60

Candidate Starts for Porky_133:

(Start: 35 @71228 has 35 MA's), (59, 71117), (Start: 60 @71114 has 2 MA's), (65, 71075), (90, 70925), (94, 70898), (102, 70778), (106, 70748), (110, 70718), (116, 70694), (118, 70691),

Gene: Pound_216 Start: 106092, Stop: 105640, Start Num: 54

Candidate Starts for Pound_216:

(43, 106143), (Start: 54 @106092 has 31 MA's), (65, 106026), (71, 105999), (85, 105900), (90, 105876), (94, 105849), (98, 105807), (102, 105735), (103, 105726), (110, 105675), (115, 105654), (116, 105651),

Gene: Ptowny_126 Start: 68965, Stop: 68507, Start Num: 52

Candidate Starts for Ptowny_126:

(Start: 52 @68965 has 86 MA's), (61, 68926), (65, 68896), (90, 68746), (93, 68725), (94, 68719), (98, 68677), (102, 68605), (103, 68596), (104, 68584), (110, 68545), (116, 68521), (118, 68518),

Gene: Puissant_47 Start: 40211, Stop: 40798, Start Num: 35

Candidate Starts for Puissant_47:

(31, 40142), (Start: 35 @40211 has 35 MA's), (58, 40322), (65, 40364), (72, 40403), (76, 40445), (89, 40544), (90, 40547), (94, 40574), (102, 40703), (110, 40763), (116, 40787),

Gene: Pumpkin_132 Start: 70271, Stop: 69813, Start Num: 52

Candidate Starts for Pumpkin_132:

(Start: 52 @70271 has 86 MA's), (61, 70232), (65, 70202), (90, 70052), (93, 70031), (94, 70025), (98, 69983), (102, 69911), (103, 69902), (104, 69890), (110, 69851), (116, 69827), (118, 69824),

Gene: Quallification_132 Start: 71487, Stop: 70945, Start Num: 35

Candidate Starts for Quallification_132:

(32, 71544), (33, 71538), (Start: 35 @71487 has 35 MA's), (Start: 50 @71415 has 1 MA's), (59, 71376), (Start: 60 @71373 has 2 MA's), (65, 71334), (90, 71184), (93, 71163), (94, 71157), (98, 71115), (102, 71043), (103, 71034), (104, 71022), (110, 70983), (116, 70959), (118, 70956),

Gene: Rakim_133 Start: 70829, Stop: 70365, Start Num: 52

Candidate Starts for Rakim_133:

(Start: 52 @70829 has 86 MA's), (61, 70790), (65, 70760), (90, 70610), (94, 70583), (102, 70463), (103, 70454), (104, 70442), (110, 70403), (116, 70379), (118, 70376),

Gene: Rearden_225 Start: 105244, Stop: 104786, Start Num: 54

Candidate Starts for Rearden_225:

(49, 105256), (Start: 54 @105244 has 31 MA's), (65, 105178), (71, 105151), (85, 105052), (90, 105028), (93, 105007), (94, 105001), (102, 104881), (103, 104872), (110, 104821), (115, 104800), (116, 104797),

Gene: RedRaider_92 Start: 65733, Stop: 66293, Start Num: 36

Candidate Starts for RedRaider_92:

(1, 65133), (2, 65196), (3, 65199), (5, 65229), (7, 65241), (11, 65298), (14, 65340), (15, 65346), (18, 65421), (29, 65544), (Start: 36 @65733 has 16 MA's), (Start: 47 @65793 has 1 MA's), (63, 65868), (64, 65877), (65, 65886), (70, 65910), (79, 65958), (88, 66027), (92, 66051), (93, 66057), (94, 66063), (108, 66219), (111, 66240), (114, 66252),

Gene: Rimmer_129 Start: 70730, Stop: 70272, Start Num: 52

Candidate Starts for Rimmer_129:

(Start: 52 @70730 has 86 MA's), (61, 70691), (65, 70661), (90, 70511), (93, 70490), (94, 70484), (98, 70442), (102, 70370), (104, 70349), (110, 70310), (116, 70286), (118, 70283),

Gene: RiverMonster_131 Start: 70890, Stop: 70432, Start Num: 52

Candidate Starts for RiverMonster_131:

(Start: 52 @70890 has 86 MA's), (61, 70851), (65, 70821), (90, 70671), (93, 70650), (94, 70644), (98, 70602), (102, 70530), (103, 70521), (104, 70509), (110, 70470), (116, 70446), (118, 70443),

Gene: Saints25_128 Start: 69055, Stop: 68591, Start Num: 52

Candidate Starts for Saints25_128:

(Start: 52 @69055 has 86 MA's), (61, 69016), (65, 68986), (90, 68836), (94, 68809), (102, 68689), (106, 68659), (110, 68629), (116, 68605), (118, 68602),

Gene: Sassay_127 Start: 69174, Stop: 68716, Start Num: 52

Candidate Starts for Sassay_127:

(Start: 52 @69174 has 86 MA's), (61, 69135), (65, 69105), (90, 68955), (93, 68934), (94, 68928), (98, 68886), (102, 68814), (103, 68805), (104, 68793), (110, 68754), (116, 68730), (118, 68727),

Gene: Schatzie_217 Start: 106558, Stop: 106100, Start Num: 54

Candidate Starts for Schatzie_217:

(49, 106570), (Start: 54 @106558 has 31 MA's), (65, 106492), (71, 106465), (85, 106366), (90, 106342), (94, 106315), (102, 106195), (103, 106186), (110, 106135), (115, 106114),

Gene: Scuba_98 Start: 62555, Stop: 63103, Start Num: 37

Candidate Starts for Scuba_98:

(Start: 37 @62555 has 3 MA's), (48, 62615), (65, 62693), (82, 62792), (85, 62825), (90, 62849), (92, 62864), (93, 62870), (95, 62897), (97, 62921), (100, 62951),

Gene: Shaboozey_224 Start: 104253, Stop: 103795, Start Num: 54

Candidate Starts for Shaboozey_224:

(43, 104304), (51, 104262), (Start: 54 @104253 has 31 MA's), (65, 104187), (71, 104160), (85, 104061), (90, 104037), (94, 104010), (102, 103890), (103, 103881), (110, 103830), (115, 103809), (116, 103806),

Gene: ShamWow_132 Start: 71707, Stop: 71249, Start Num: 52

Candidate Starts for ShamWow_132:

(Start: 52 @71707 has 86 MA's), (61, 71668), (65, 71638), (90, 71488), (93, 71467), (94, 71461), (98, 71419), (102, 71347), (103, 71338), (104, 71326), (110, 71287), (116, 71263), (118, 71260),

Gene: ShereKhan_131 Start: 71733, Stop: 71191, Start Num: 35

Candidate Starts for ShereKhan_131:

(32, 71790), (33, 71784), (Start: 35 @71733 has 35 MA's), (Start: 50 @71661 has 1 MA's), (59, 71622), (Start: 60 @71619 has 2 MA's), (65, 71580), (90, 71430), (93, 71409), (94, 71403), (98, 71361), (102, 71289), (103, 71280), (104, 71268), (110, 71229), (116, 71205), (118, 71202),

Gene: Simpliphy_131 Start: 70461, Stop: 70003, Start Num: 52

Candidate Starts for Simpliphy_131:

(Start: 52 @70461 has 86 MA's), (61, 70422), (65, 70392), (90, 70242), (93, 70221), (94, 70215), (98, 70173), (102, 70101), (103, 70092), (104, 70080), (110, 70041), (116, 70017), (118, 70014),

Gene: SirDuracell_135 Start: 71323, Stop: 70847, Start Num: 54

Candidate Starts for SirDuracell_135:

(Start: 54 @71323 has 31 MA's), (65, 71254), (66, 71251), (90, 71104), (94, 71077), (102, 70945), (110, 70885), (116, 70861), (118, 70858),

Gene: Skysand_91 Start: 64471, Stop: 65037, Start Num: 36

Candidate Starts for Skysand_91:

(1, 63880), (2, 63943), (3, 63946), (4, 63967), (5, 63976), (6, 63979), (7, 63988), (11, 64045), (22, 64204), (23, 64222), (Start: 36 @64471 has 16 MA's), (44, 64501), (Start: 47 @64531 has 1 MA's), (63, 64603), (64, 64612), (65, 64621), (67, 64636), (70, 64645), (79, 64699), (88, 64768), (92, 64792), (93, 64798), (94, 64804), (108, 64960),

Gene: SophKB_130 Start: 70806, Stop: 70348, Start Num: 52

Candidate Starts for SophKB_130:

(Start: 52 @70806 has 86 MA's), (61, 70767), (65, 70737), (90, 70587), (93, 70566), (94, 70560), (98, 70518), (102, 70446), (103, 70437), (104, 70425), (110, 70386), (116, 70362), (118, 70359),

Gene: Sotrice96_137 Start: 72007, Stop: 71543, Start Num: 52

Candidate Starts for Sotrice96_137:

(Start: 52 @72007 has 86 MA's), (61, 71968), (65, 71938), (90, 71788), (94, 71761), (102, 71641), (106, 71611), (110, 71581), (116, 71557), (118, 71554),

Gene: SpeedDemon_1630 Start: 91078, Stop: 90608, Start Num: 47

Candidate Starts for SpeedDemon_1630:

(Start: 47 @91078 has 1 MA's), (55, 91054), (58, 91030), (65, 91006), (73, 90958), (78, 90919), (82, 90898), (86, 90856), (101, 90742), (106, 90670),

Gene: Squint_224 Start: 105830, Stop: 105378, Start Num: 54

Candidate Starts for Squint_224:

(42, 105884), (Start: 54 @105830 has 31 MA's), (65, 105764), (71, 105737), (85, 105638), (90, 105614), (94, 105587), (98, 105545), (102, 105473), (103, 105464), (109, 105416), (110, 105413), (115, 105392), (116, 105389),

Gene: Stank_135 Start: 71586, Stop: 71038, Start Num: 35

Candidate Starts for Stank_135:

(32, 71643), (33, 71637), (Start: 35 @71586 has 35 MA's), (Start: 50 @71514 has 1 MA's), (59, 71475), (Start: 60 @71472 has 2 MA's), (65, 71433), (90, 71283), (94, 71256), (102, 71136), (110, 71076), (116, 71052), (118, 71049),

Gene: StarStruck_91 Start: 66496, Stop: 67062, Start Num: 41

Candidate Starts for StarStruck_91:

(40, 66493), (Start: 41 @66496 has 3 MA's), (45, 66529), (Start: 57 @66571 has 1 MA's), (79, 66703), (92, 66796), (93, 66802), (94, 66808), (102, 66922), (104, 66943),

Gene: Stark_130 Start: 70709, Stop: 70251, Start Num: 52

Candidate Starts for Stark_130:

(Start: 52 @70709 has 86 MA's), (61, 70670), (65, 70640), (90, 70490), (93, 70469), (94, 70463), (98, 70421), (102, 70349), (104, 70328), (110, 70289), (116, 70265), (118, 70262),

Gene: StellaBean_129 Start: 71091, Stop: 70549, Start Num: 35

Candidate Starts for StellaBean_129:

(32, 71148), (33, 71142), (Start: 35 @71091 has 35 MA's), (Start: 50 @71019 has 1 MA's), (59, 70980), (Start: 60 @70977 has 2 MA's), (65, 70938), (90, 70788), (93, 70767), (94, 70761), (98, 70719), (102, 70647), (103, 70638), (104, 70626), (110, 70587), (116, 70563), (118, 70560),

Gene: StolenFromERC_134 Start: 70931, Stop: 70383, Start Num: 35

Candidate Starts for StolenFromERC_134:

(32, 70988), (33, 70982), (Start: 35 @70931 has 35 MA's), (Start: 50 @70859 has 1 MA's), (59, 70820), (Start: 60 @70817 has 2 MA's), (65, 70778), (90, 70628), (94, 70601), (102, 70481), (110, 70421), (116, 70397), (118, 70394),

Gene: StormChicken_133 Start: 71445, Stop: 71014, Start Num: 59

Candidate Starts for StormChicken_133:

(32, 71613), (33, 71607), (Start: 35 @71556 has 35 MA's), (Start: 50 @71484 has 1 MA's), (59, 71445), (Start: 60 @71442 has 2 MA's), (65, 71403), (90, 71253), (93, 71232), (94, 71226), (98, 71184), (102, 71112), (103, 71103), (104, 71091), (110, 71052), (116, 71028), (118, 71025),

Gene: Sukkupi_85 Start: 61461, Stop: 62021, Start Num: 36

Candidate Starts for Sukkupi_85:

(20, 61182), (25, 61257), (30, 61389), (Start: 36 @61461 has 16 MA's), (65, 61584), (94, 61764), (98, 61806), (100, 61833), (117, 61956),

Gene: Superphikiman_225 Start: 105649, Stop: 105197, Start Num: 54

Candidate Starts for Superphikiman_225:

(42, 105703), (Start: 54 @105649 has 31 MA's), (65, 105583), (71, 105556), (85, 105457), (90, 105433), (94, 105406), (98, 105364), (102, 105292), (103, 105283), (110, 105232), (115, 105211), (116, 105208),

Gene: TBrady12_136 Start: 71023, Stop: 70475, Start Num: 35

Candidate Starts for TBrady12_136:

(32, 71080), (33, 71074), (Start: 35 @71023 has 35 MA's), (Start: 50 @70951 has 1 MA's), (59, 70912), (Start: 60 @70909 has 2 MA's), (65, 70870), (90, 70720), (94, 70693), (102, 70573), (106, 70543), (110, 70513), (116, 70489), (118, 70486),

Gene: Tarkin_130 Start: 71598, Stop: 71056, Start Num: 35

Candidate Starts for Tarkin_130:

(32, 71655), (33, 71649), (Start: 35 @71598 has 35 MA's), (Start: 50 @71526 has 1 MA's), (59, 71487), (Start: 60 @71484 has 2 MA's), (65, 71445), (90, 71295), (93, 71274), (94, 71268), (98, 71226), (102, 71154), (104, 71133), (110, 71094), (116, 71070), (118, 71067),

Gene: TeamEdward_131 Start: 71174, Stop: 70632, Start Num: 35

Candidate Starts for TeamEdward_131:

(32, 71231), (33, 71225), (Start: 35 @71174 has 35 MA's), (Start: 50 @71102 has 1 MA's), (59, 71063), (Start: 60 @71060 has 2 MA's), (65, 71021), (90, 70871), (93, 70850), (94, 70844), (98, 70802), (102, 70730), (103, 70721), (104, 70709), (110, 70670), (116, 70646), (118, 70643),

Gene: TeardropMSU_133 Start: 70875, Stop: 70417, Start Num: 52

Candidate Starts for TeardropMSU_133:

(Start: 52 @70875 has 86 MA's), (61, 70836), (65, 70806), (90, 70656), (93, 70635), (94, 70629), (98, 70587), (102, 70515), (103, 70506), (104, 70494), (110, 70455), (116, 70431), (118, 70428),

Gene: Terminus_135 Start: 71848, Stop: 71390, Start Num: 52

Candidate Starts for Terminus_135:

(Start: 52 @71848 has 86 MA's), (61, 71809), (65, 71779), (90, 71629), (93, 71608), (94, 71602), (98, 71560), (102, 71488), (103, 71479), (104, 71467), (110, 71428), (116, 71404), (118, 71401),

Gene: ThreeRngTarjay_226 Start: 109071, Stop: 108619, Start Num: 54

Candidate Starts for ThreeRngTarjay_226:

(49, 109083), (Start: 54 @109071 has 31 MA's), (65, 109005), (71, 108978), (85, 108879), (90, 108855), (93, 108834), (94, 108828), (98, 108786), (102, 108714), (103, 108705), (110, 108654), (115, 108633), (116, 108630),

Gene: Thresher_134 Start: 71775, Stop: 71311, Start Num: 52

Candidate Starts for Thresher_134:

(Start: 52 @71775 has 86 MA's), (61, 71736), (65, 71706), (90, 71556), (94, 71529), (102, 71409), (103, 71400), (104, 71388), (110, 71349), (116, 71325), (118, 71322),

Gene: Tomaszewski_126 Start: 70386, Stop: 69928, Start Num: 52

Candidate Starts for Tomaszewski_126:

(Start: 52 @70386 has 86 MA's), (61, 70347), (65, 70317), (90, 70167), (93, 70146), (94, 70140), (98, 70098), (102, 70026), (103, 70017), (104, 70005), (110, 69966), (116, 69942), (118, 69939),

Gene: Toto_130 Start: 71707, Stop: 71249, Start Num: 52

Candidate Starts for Toto_130:

(Start: 52 @71707 has 86 MA's), (61, 71668), (65, 71638), (90, 71488), (93, 71467), (94, 71461), (98, 71419), (102, 71347), (103, 71338), (104, 71326), (110, 71287), (116, 71263), (118, 71260),

Gene: Traaww1_128 Start: 70255, Stop: 69797, Start Num: 52

Candidate Starts for Traaww1_128:

(Start: 52 @70255 has 86 MA's), (61, 70216), (65, 70186), (90, 70036), (93, 70015), (94, 70009), (98, 69967), (102, 69895), (103, 69886), (104, 69874), (110, 69835), (116, 69811), (118, 69808),

Gene: Tuco_138 Start: 72934, Stop: 72476, Start Num: 52

Candidate Starts for Tuco_138:

(Start: 52 @72934 has 86 MA's), (61, 72895), (65, 72865), (90, 72715), (93, 72694), (94, 72688), (98, 72646), (102, 72574), (103, 72565), (104, 72553), (110, 72514), (116, 72490), (118, 72487),

Gene: Turuncu_91 Start: 63897, Stop: 64454, Start Num: 36

Candidate Starts for Turuncu_91:

(17, 63546), (19, 63597), (Start: 36 @63897 has 16 MA's), (46, 63951), (Start: 47 @63960 has 1 MA's), (62, 64023), (68, 64068), (70, 64074), (80, 64125), (87, 64188), (88, 64191), (92, 64215), (93, 64221), (94, 64227), (98, 64269),

Gene: Ukulele_127 Start: 70270, Stop: 69812, Start Num: 52

Candidate Starts for Ukulele_127:

(Start: 52 @70270 has 86 MA's), (61, 70231), (65, 70201), (90, 70051), (93, 70030), (94, 70024), (98, 69982), (102, 69910), (103, 69901), (104, 69889), (110, 69850), (116, 69826), (118, 69823),

Gene: WhoseManz_85 Start: 59407, Stop: 59943, Start Num: 36

Candidate Starts for WhoseManz_85:

(3, 58888), (8, 58939), (9, 58960), (10, 58981), (12, 58993), (13, 59002), (30, 59335), (Start: 36 @59407 has 16 MA's), (53, 59473), (65, 59533), (94, 59713), (98, 59755), (117, 59905),

Gene: Wiggin_135 Start: 70932, Stop: 70468, Start Num: 52

Candidate Starts for Wiggin_135:

(Start: 52 @70932 has 86 MA's), (61, 70893), (65, 70863), (90, 70713), (94, 70686), (102, 70566), (106, 70536), (110, 70506), (116, 70482), (118, 70479),

Gene: Willez_128 Start: 69661, Stop: 69101, Start Num: 35

Candidate Starts for Willez_128:

(32, 69718), (33, 69712), (Start: 35 @69661 has 35 MA's), (Start: 50 @69589 has 1 MA's), (59, 69550), (Start: 60 @69547 has 2 MA's), (65, 69508), (66, 69505), (90, 69358), (94, 69331), (102, 69199), (110, 69139), (116, 69115), (118, 69112),

Gene: Xandras_132 Start: 70840, Stop: 70292, Start Num: 35

Candidate Starts for Xandras_132:

(32, 70897), (33, 70891), (Start: 35 @70840 has 35 MA's), (Start: 50 @70768 has 1 MA's), (59, 70729), (Start: 60 @70726 has 2 MA's), (65, 70687), (90, 70537), (94, 70510), (102, 70390), (110, 70330), (116, 70306), (118, 70303),

Gene: YassJohnny_128 Start: 69195, Stop: 68737, Start Num: 52

Candidate Starts for YassJohnny_128:

(Start: 52 @69195 has 86 MA's), (65, 69126), (66, 69123), (90, 68976), (94, 68949), (98, 68907), (102, 68835), (103, 68826), (104, 68814), (110, 68775), (116, 68751), (118, 68748),

Gene: Yeet_219 Start: 106651, Stop: 106199, Start Num: 54

Candidate Starts for Yeet_219:

(49, 106663), (Start: 54 @106651 has 31 MA's), (65, 106585), (71, 106558), (85, 106459), (90, 106435), (94, 106408), (98, 106366), (102, 106294), (103, 106285), (110, 106234), (115, 106213),

Gene: Yndexa_85 Start: 61461, Stop: 62021, Start Num: 36

Candidate Starts for Yndexa_85:

(20, 61182), (25, 61257), (30, 61389), (Start: 36 @61461 has 16 MA's), (65, 61584), (94, 61764), (98, 61806), (100, 61833), (117, 61956),

Gene: Youngblood_136 Start: 71345, Stop: 70887, Start Num: 52

Candidate Starts for Youngblood_136:

(Start: 52 @71345 has 86 MA's), (61, 71306), (65, 71276), (90, 71126), (93, 71105), (94, 71099), (98, 71057), (102, 70985), (103, 70976), (104, 70964), (110, 70925), (116, 70901), (118, 70898),

Gene: xkcd_135 Start: 71614, Stop: 71072, Start Num: 35

Candidate Starts for xkcd_135:

(32, 71671), (33, 71665), (Start: 35 @71614 has 35 MA's), (Start: 50 @71542 has 1 MA's), (59, 71503), (Start: 60 @71500 has 2 MA's), (65, 71461), (90, 71311), (93, 71290), (94, 71284), (98, 71242), (102, 71170), (103, 71161), (104, 71149), (110, 71110), (116, 71086), (118, 71083),