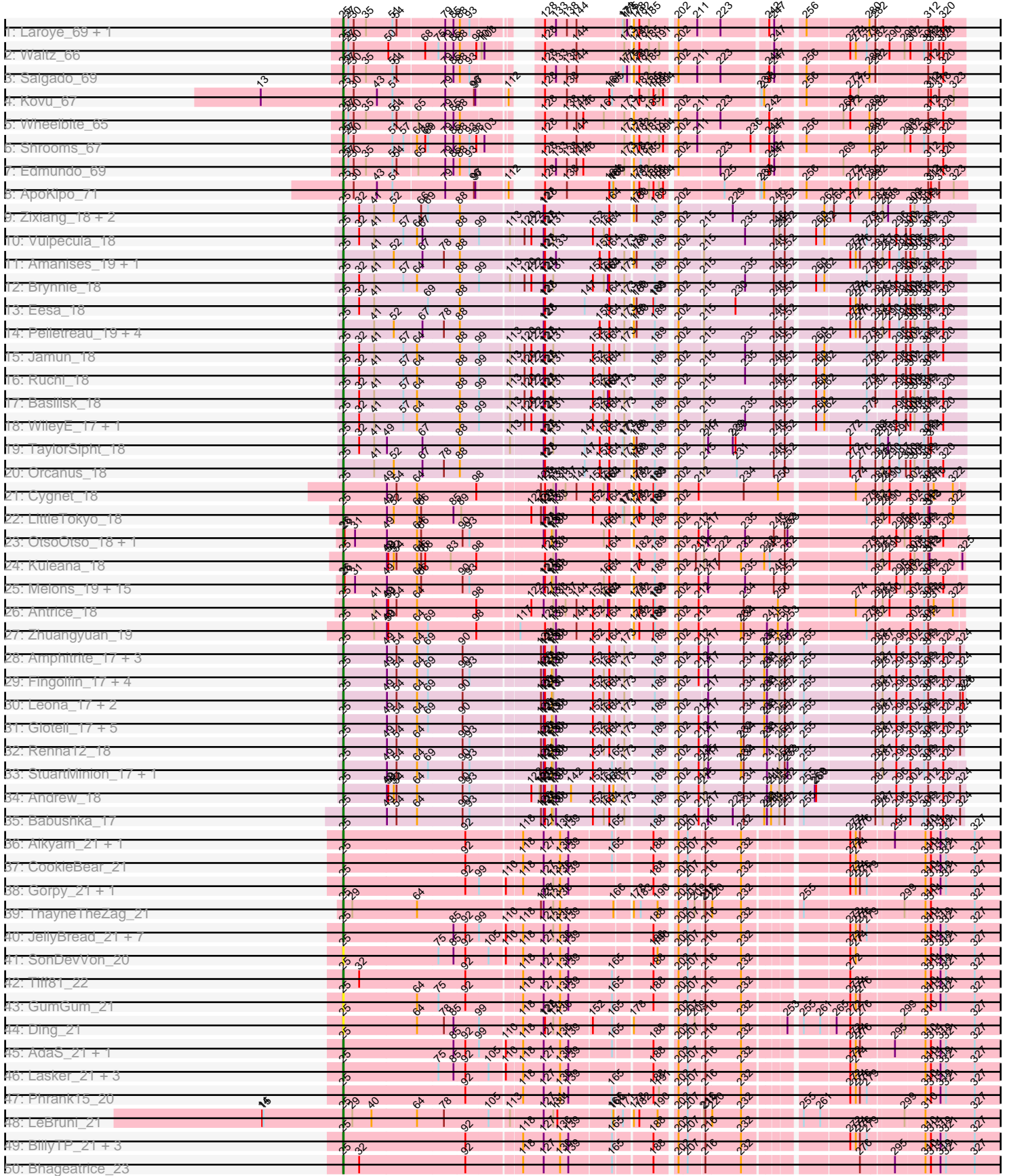
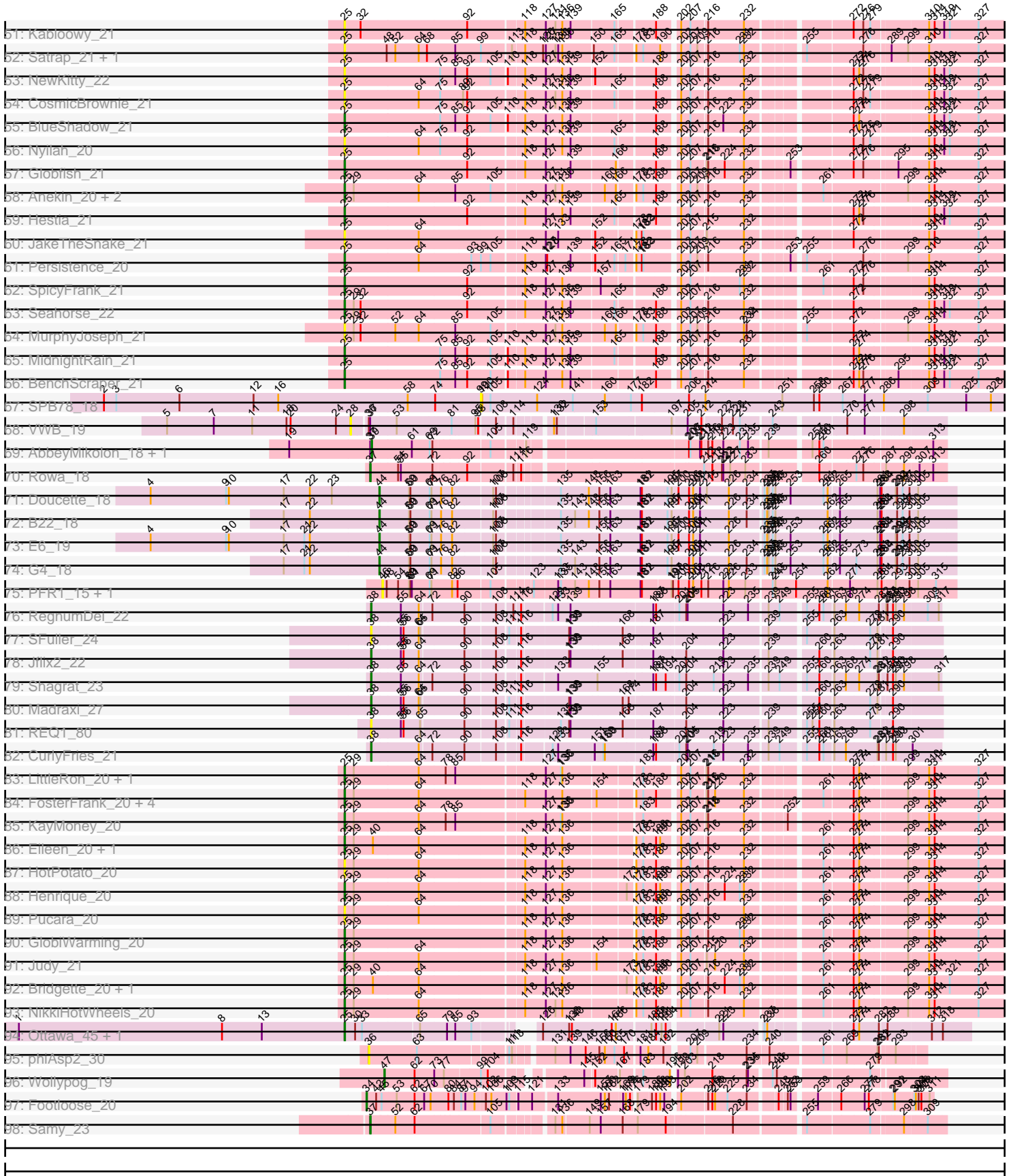


Pham 308121



Pham 308121



Note: Tracks are now grouped by subcluster and scaled. Switching in subcluster is indicated by changes in track color. Track scale is now set by default to display the region 30 bp upstream of start 1 to 30 bp downstream of the last possible start. If this default region is judged to be packed too tightly with annotated starts, the track will be further scaled to only show that region of the ORF with annotated starts. This action will be indicated by adding "Zoomed" to the title. For starts, yellow indicates the location of called starts comprised solely of Glimmer/GeneMark auto-annotations, green indicates the location of called starts with at least 1 manual gene annotation.

Pham 308121 Report

This analysis was run 06/27/26 on database version 652.

Pham number 308121 has 167 members, 42 are drafts.

Phages represented in each track:

- Track 1 : Laroye_69, LiSara_66
- Track 2 : Waltz_66
- Track 3 : Salgado_69
- Track 4 : Kovu_67
- Track 5 : Wheelbite_65
- Track 6 : Shrooms_67
- Track 7 : Edmundo_69
- Track 8 : ApoKipo_71
- Track 9 : Zixiang_18, Chicken_18, Niblet_18
- Track 10 : Vulpecula_18
- Track 11 : Amanises_19, Shen_19
- Track 12 : Brynnie_18
- Track 13 : Eesa_18
- Track 14 : Pelletreau_19, Gravel_19, Toad24_19, Westrich_19, KendraB23_19
- Track 15 : Jamun_18
- Track 16 : Ruchi_18
- Track 17 : Basilisk_18
- Track 18 : WileyE_17, Chickaboom_17
- Track 19 : TaylorSipht_18
- Track 20 : Orcanus_18
- Track 21 : Cygnet_18
- Track 22 : LittleTokyo_18
- Track 23 : OtsoOtso_18, Polka_18
- Track 24 : Kuleana_18
- Track 25 : Melons_19, Pineda_19, Bibble12_19, Amelia_19, Cote_19, Lunar_19, Bedetta_19, PhirstandPhine_19, Damocles_19, Daob_19, Coral_18, Colusalem_18, Kepler_18, HannahPhantana_19, GramZayde_18, Jerole_19
- Track 26 : Antrice_18
- Track 27 : Zhuangyuan_19
- Track 28 : Amphitrite_17, HamCheese_17, PhluffyCoco_17, Laphuphu24k_16
- Track 29 : Fingolfin_17, Juno112_17, Camara_17, Oppalora_17, AmiCi24_17
- Track 30 : Leona_17, Azaz_17, Rattail_17
- Track 31 : Glotell_17, KHumphrey_17, DanHam62_17, AdoptaAdorbs_17, Atlantica_17, RedFox_17
- Track 32 : Renna12_18
- Track 33 : StuartMinion_17, AlexMinion_18
- Track 34 : Andrew_18

- Track 35 : Babushka_17
- Track 36 : Aikyam_21, MaterMagnus_21
- Track 37 : CookieBear_21
- Track 38 : Gorpy_21, Sakai_21
- Track 39 : ThayneTheZag_21
- Track 40 : JellyBread_21, Sporco_22, RadFad_21, Vopal_22, Auxilium_21, Raphaella_21, YoungHarleezy_21, Hillester_21
- Track 41 : SonDevVon_20
- Track 42 : Tiff81_22
- Track 43 : GumGum_21
- Track 44 : Ding_21
- Track 45 : AdaS_21, MUWow_20
- Track 46 : Lasker_21, Richie_21, BasketStar_21, Windest_22
- Track 47 : Phrank15_20
- Track 48 : LeBruni_21
- Track 49 : BillyTP_21, Mapleville_20, Lawnathon_21, Isolde_21
- Track 50 : Bhageatrice_23
- Track 51 : Kabloowy_21
- Track 52 : Satrap_21, Shukran_21
- Track 53 : NewKitty_22
- Track 54 : CosmicBrownie_21
- Track 55 : BlueShadow_21
- Track 56 : Nyilah_20
- Track 57 : Globfish_21
- Track 58 : Aekin_20, Crescenzo_21, DarwinJr_24
- Track 59 : Hestia_21
- Track 60 : JakeTheSnake_21
- Track 61 : Persistence_20
- Track 62 : SpicyFrank_21
- Track 63 : Seahorse_22
- Track 64 : MurphyJoseph_21
- Track 65 : MidnightRain_21
- Track 66 : BenchScraper_21
- Track 67 : SPB78_18
- Track 68 : VWB_19
- Track 69 : AbbeyMikolon_18, Nesbitt_18
- Track 70 : Rowa_18
- Track 71 : Doucette_18
- Track 72 : B22_18
- Track 73 : E6_19
- Track 74 : G4_18
- Track 75 : PFR1_15, PFR2_17
- Track 76 : RegnumDei_22
- Track 77 : SFuller_24
- Track 78 : Jflix2_22
- Track 79 : Shagrat_23
- Track 80 : Madraxi_27
- Track 81 : REQ1_80
- Track 82 : CurlyFries_21
- Track 83 : LittleRon_20, ChuckDuck_20
- Track 84 : FosterFrank_20, PeggyLeg03_20, LilyBell_20, Constance_20, NidoQ_20
- Track 85 : KayMoney_20
- Track 86 : Eileen_20, Peas_20

- Track 87 : HotPotato_20
- Track 88 : Henrique_20
- Track 89 : Pucara_20
- Track 90 : GlobiWarming_20
- Track 91 : Judy_21
- Track 92 : Bridgette_20, Karkharias_20
- Track 93 : NikkiHotWheels_20
- Track 94 : Ottawa_45, Kharcho_45
- Track 95 : phiAsp2_30
- Track 96 : Wollypog_19
- Track 97 : Footloose_20
- Track 98 : Samy_23

Summary of Final Annotations (See graph section above for start numbers):

The start number called the most often in the published annotations is 25, it was called in 110 of the 125 non-draft genes in the pham.

Genes that call this "Most Annotated" start:

- AdaS_21, AdoptaAdorbs_17, Aikyam_21, AlexMinion_18, Amanises_19, Amelia_19, AmiCi24_17, Amphitrite_17, Andrew_18, Anekin_20, Antrice_18, ApoKipo_71, Atlantica_17, Auxilium_21, Azaz_17, Babushka_17, Basilisk_18, BasketStar_21, Bedetta_19, BenchScraper_21, Bhageatrice_23, Bibble12_19, BillyTP_21, BlueShadow_21, Bridgette_20, Brynnie_18, Camara_17, Chickaboom_17, Chicken_18, ChuckDuck_20, Colusalem_18, Constance_20, CookieBear_21, Coral_18, CosmicBrownie_21, Cote_19, Crescenzo_21, Cygnet_18, Damocles_19, DanHam62_17, Daob_19, DarwinJr_24, Ding_21, Edmundo_69, Eesa_18, Eileen_20, Fingolfin_17, FosterFrank_20, Globfish_21, GlobiWarming_20, Glotell_17, Gorpy_21, GramZayde_18, Gravel_19, GumGum_21, HamCheese_17, HannahPhantana_19, Henrique_20, Hestia_21, Hillester_21, HotPotato_20, Isolde_21, JakeTheSnake_21, Jamun_18, JellyBread_21, Jerole_19, Judy_21, Juno112_17, KHumphrey_17, Kabloowy_21, Karkharias_20, KayMoney_20, KendraB23_19, Kepler_18, Kharcho_45, Kovu_67, Kuleana_18, Laphuphu24k_16, Laroye_69, Lasker_21, Lawnathon_21, LeBruni_21, Leona_17, LiSara_66, LilyBell_20, LittleRon_20, LittleTokyo_18, Lunar_19, MUWow_20, Mapleville_20, MaterMagnus_21, Melons_19, MidnightRain_21, MurphyJoseph_21, NewKitty_22, Niblet_18, NidoQ_20, NikkiHotWheels_20, Nyilah_20, Oppalora_17, Orcanus_18, OtsoOtso_18, Ottawa_45, Peas_20, PeggyLeg03_20, Pelletreau_19, Persistence_20, PhirstandPhine_19, PhluffyCoco_17, Phrank15_20, Pineda_19, Polka_18, Pucara_20, RadFad_21, Raphaella_21, Rattail_17, RedFox_17, Renna12_18, Richie_21, Ruchi_18, Sakai_21, Salgado_69, Satrap_21, Seahorse_22, Shen_19, Shrooms_67, Shukran_21, SonDevVon_20, SpicyFrank_21, Sporco_22, StuartMinion_17, TaylorSipht_18, ThayneTheZag_21, Tiff81_22, Toad24_19, Vopal_22, Vulpecula_18, Waltz_66, Westrich_19, Wheelbite_65, WileyE_17, Windest_22, YoungHarleezy_21, Zhuangyuan_19, Zixiang_18,

Genes that have the "Most Annotated" start but do not call it:

-

Genes that do not have the "Most Annotated" start:

- AbbeyMikolon_18, B22_18, CurlyFries_21, Doucette_18, E6_19, Footloose_20, G4_18, Jflix2_22, Madraxi_27, Nesbitt_18, PFR1_15, PFR2_17, REQ1_80, RegnumDei_22, Rowa_18, SFuller_24, SPB78_18, Samy_23, Shagrat_23, VWB_19, Wollypog_19, phiAsp2_30,

Summary by start number:

Start 25:

- Found in 145 of 167 (86.8%) of genes in pham
- Manual Annotations of this start: 110 of 125
- Called 100.0% of time when present
- Phage (with cluster) where this start called: AdaS_21 (AY), AdoptaAdorbs_17 (AS3), Aikyam_21 (AY), AlexMinion_18 (AS3), Amanises_19 (AS1), Amelia_19 (AS2), AmiCi24_17 (AS3), Amphitrite_17 (AS3), Andrew_18 (AS3), Anekin_20 (AY), Antrice_18 (AS2), ApoKipo_71 (AL), Atlantica_17 (AS3), Auxilium_21 (AY), Azaz_17 (AS3), Babushka_17 (AS3), Basilisk_18 (AS1), BasketStar_21 (AY), Bedetta_19 (AS2), BenchScraper_21 (AY), Bhageatrice_23 (AY), Bible12_19 (AS2), BillyTP_21 (AY), BlueShadow_21 (AY), Bridgette_20 (FA), Brynnie_18 (AS1), Camara_17 (AS3), Chickaboom_17 (AS1), Chicken_18 (AS1), ChuckDuck_20 (FA), Colusalem_18 (AS2), Constance_20 (FA), CookieBear_21 (AY), Coral_18 (AS2), CosmicBrownie_21 (AY), Cote_19 (AS2), Crescenzo_21 (AY), Cygnet_18 (AS2), Damocles_19 (AS2), DanHam62_17 (AS3), Daob_19 (AS2), DarwinJr_24 (AY), Ding_21 (AY), Edmundo_69 (AL), Eesa_18 (AS1), Eileen_20 (FA), Fingolfin_17 (AS3), FosterFrank_20 (FA), Globfish_21 (AY), GlobiWarming_20 (FA), Glotell_17 (AS3), Gorpy_21 (AY), GramZayde_18 (AS2), Gravel_19 (AS1), GumGum_21 (AY), HamCheese_17 (AS3), HannahPhantana_19 (AS2), Henrique_20 (FA), Hestia_21 (AY), Hillester_21 (AY), HotPotato_20 (FA), Isolde_21 (AY), JakeTheSnake_21 (AY), Jamun_18 (AS1), JellyBread_21 (AY), Jerole_19 (AS2), Judy_21 (FA), Juno112_17 (AS3), KHumphrey_17 (AS3), Kabloowy_21 (AY), Karkharias_20 (FA), KayMoney_20 (FA), KendraB23_19 (AS1), Kepler_18 (AS2), Kharcho_45 (FM), Kovu_67 (AL), Kuleana_18 (AS2), Laphuphu24k_16 (AS3), Laroye_69 (AL), Lasker_21 (AY), Lawnathon_21 (AY), LeBruni_21 (AY), Leona_17 (AS3), LiSara_66 (AL), LilyBell_20 (FA), LittleRon_20 (FA), LittleTokyo_18 (AS2), Lunar_19 (AS2), MUWow_20 (AY), Mapleville_20 (AY), MaterMagnus_21 (AY), Melons_19 (AS2), MidnightRain_21 (AY), MurphyJoseph_21 (AY), NewKitty_22 (AY), Niblet_18 (AS1), NidoQ_20 (FA), NikkiHotWheels_20 (FA), Nyilah_20 (AY), Oppalora_17 (AS3), Orcanus_18 (AS1), OtsoOtso_18 (AS2), Ottawa_45 (FM), Peas_20 (FA), PeggyLeg03_20 (FA), Pelletreau_19 (AS1), Persistence_20 (AY), PhirstandPhine_19 (AS2), PhluffyCoco_17 (AS3), Phrank15_20 (AY), Pineda_19 (AS2), Polka_18 (AS2), Pucara_20 (FA), RadFad_21 (AY), Raphaella_21 (AY), Rattail_17 (AS3), RedFox_17 (AS3), Renna12_18 (AS3), Richie_21 (AY), Ruchi_18 (AS1), Sakai_21 (AY), Salgado_69 (AL), Satrap_21 (AY), Seahorse_22 (AY), Shen_19 (AS1), Shrooms_67 (AL), Shukran_21 (AY), SonDevVon_20 (AY), SpicyFrank_21 (AY), Sporco_22 (AY), StuartMinion_17 (AS3), TaylorSipht_18 (AS1), ThayneTheZag_21 (AY), Tiff81_22 (AY), Toad24_19 (AS1), Vopal_22 (AY), Vulpecula_18 (AS1), Waltz_66 (AL), Westrich_19 (AS1), Wheelbite_65 (AL), WileyE_17 (AS1), Windest_22 (AY), YoungHarleezy_21 (AY), Zhuangyuan_19 (AS2), Zixiang_18 (AS1),

Start 28:

- Found in 1 of 167 (0.6%) of genes in pham
- No Manual Annotations of this start.
- Called 100.0% of time when present
- Phage (with cluster) where this start called: VWB_19 (BA),

Start 34:

- Found in 1 of 167 (0.6%) of genes in pham
- Manual Annotations of this start: 1 of 125
- Called 100.0% of time when present
- Phage (with cluster) where this start called: Footloose_20 (singleton),

Start 36:

- Found in 2 of 167 (1.2%) of genes in pham
- No Manual Annotations of this start.
- Called 50.0% of time when present
- Phage (with cluster) where this start called: phiAsp2_30 (singleton),

Start 37:

- Found in 5 of 167 (3.0%) of genes in pham
- Manual Annotations of this start: 2 of 125
- Called 40.0% of time when present
- Phage (with cluster) where this start called: Rowa_18 (BL), Samy_23 (singleton),

Start 38:

- Found in 7 of 167 (4.2%) of genes in pham
- Manual Annotations of this start: 5 of 125
- Called 100.0% of time when present
- Phage (with cluster) where this start called: CurlyFries_21 (CF), Jflix2_22 (CF), Madraxi_27 (CF), REQ1_80 (CF), RegnumDei_22 (CF), SFuller_24 (CF), Shagrat_23 (CF),

Start 39:

- Found in 2 of 167 (1.2%) of genes in pham
- Manual Annotations of this start: 2 of 125
- Called 100.0% of time when present
- Phage (with cluster) where this start called: AbbeyMikolon_18 (BL), Nesbitt_18 (BL),

Start 44:

- Found in 4 of 167 (2.4%) of genes in pham
- Manual Annotations of this start: 4 of 125
- Called 100.0% of time when present
- Phage (with cluster) where this start called: B22_18 (BW), Doucette_18 (BW), E6_19 (BW), G4_18 (BW),

Start 46:

- Found in 2 of 167 (1.2%) of genes in pham
- No Manual Annotations of this start.
- Called 100.0% of time when present
- Phage (with cluster) where this start called: PFR1_15 (BX), PFR2_17 (BX),

Start 47:

- Found in 1 of 167 (0.6%) of genes in pham
- Manual Annotations of this start: 1 of 125
- Called 100.0% of time when present
- Phage (with cluster) where this start called: Wollypog_19 (singleton),

Start 99:

- Found in 25 of 167 (15.0%) of genes in pham
- No Manual Annotations of this start.
- Called 4.0% of time when present
- Phage (with cluster) where this start called: SPB78_18 (BA),

Summary by clusters:

There are 13 clusters represented in this pham: AS3, AS2, AS1, BA, BL, CF, AL, FA, BW, AY, singleton, BX, FM,

Info for manual annotations of cluster AL:

- Start number 25 was manually annotated 9 times for cluster AL.

Info for manual annotations of cluster AS1:

- Start number 25 was manually annotated 15 times for cluster AS1.

Info for manual annotations of cluster AS2:

- Start number 25 was manually annotated 18 times for cluster AS2.

Info for manual annotations of cluster AS3:

- Start number 25 was manually annotated 18 times for cluster AS3.

Info for manual annotations of cluster AY:

- Start number 25 was manually annotated 35 times for cluster AY.

Info for manual annotations of cluster BL:

- Start number 37 was manually annotated 1 time for cluster BL.
- Start number 39 was manually annotated 2 times for cluster BL.

Info for manual annotations of cluster BW:

- Start number 44 was manually annotated 4 times for cluster BW.

Info for manual annotations of cluster CF:

- Start number 38 was manually annotated 5 times for cluster CF.

Info for manual annotations of cluster FA:

- Start number 25 was manually annotated 13 times for cluster FA.

Info for manual annotations of cluster FM:

- Start number 25 was manually annotated 2 times for cluster FM.

Gene Information:

Gene: AbbeyMikolon_18 Start: 15163, Stop: 16281, Start Num: 39

Candidate Starts for AbbeyMikolon_18:

(19, 14986), (Start: 37 @15160 has 2 MA's), (Start: 39 @15163 has 2 MA's), (61, 15247), (69, 15286), (72, 15292), (105, 15403), (119, 15463), (206, 15775), (207, 15778), (211, 15799), (212, 15802), (216, 15814), (218, 15823), (223, 15847), (231, 15883), (235, 15901), (239, 15937), (257, 16015), (260, 16030), (261, 16039), (313, 16252),

Gene: AdaS_21 Start: 15623, Stop: 16924, Start Num: 25

Candidate Starts for AdaS_21:

(Start: 25 @15623 has 110 MA's), (85, 15860), (92, 15884), (99, 15911), (110, 15962), (118, 15992), (127, 16034), (136, 16070), (139, 16088), (165, 16178), (188, 16253), (202, 16292), (207, 16310), (216, 16343), (232, 16415), (272, 16613), (274, 16625), (276, 16634), (295, 16700), (310, 16763), (314, 16775), (319, 16796), (321, 16808), (327, 16871),

Gene: AdoptaAdorbs_17 Start: 12931, Stop: 14175, Start Num: 25

Candidate Starts for AdoptaAdorbs_17:

(Start: 25 @12931 has 110 MA's), (49, 13024), (54, 13045), (64, 13090), (69, 13114), (90, 13186), (126, 13342), (127, 13345), (128, 13348), (130, 13363), (131, 13366), (133, 13372), (152, 13453), (161, 13477), (164, 13489), (173, 13516), (189, 13573), (202, 13609), (212, 13651), (217, 13666), (234, 13741), (238, 13783), (241, 13789), (251, 13816), (252, 13828), (255, 13855), (282, 14005), (287, 14011), (296, 14041), (302, 14068), (309, 14095), (312, 14104), (320, 14137), (324, 14167),

Gene: Aikyam_21 Start: 15624, Stop: 16925, Start Num: 25

Candidate Starts for Aikyam_21:

(Start: 25 @15624 has 110 MA's), (92, 15885), (118, 15993), (127, 16035), (136, 16071), (139, 16089), (165, 16179), (188, 16254), (202, 16293), (207, 16311), (216, 16344), (232, 16416), (272, 16614), (274, 16626), (276, 16635), (295, 16701), (310, 16764), (314, 16776), (319, 16797), (321, 16809), (327, 16872),

Gene: AlexMinion_18 Start: 12969, Stop: 14216, Start Num: 25

Candidate Starts for AlexMinion_18:

(Start: 25 @12969 has 110 MA's), (49, 13062), (54, 13083), (64, 13128), (69, 13152), (90, 13224), (93, 13239), (126, 13380), (127, 13383), (128, 13386), (130, 13401), (131, 13404), (133, 13410), (152, 13491), (165, 13533), (173, 13554), (189, 13611), (202, 13647), (212, 13689), (215, 13695), (217, 13704), (232, 13773), (234, 13779), (241, 13827), (251, 13854), (252, 13866), (253, 13872), (255, 13893), (282, 14043), (287, 14049), (296, 14079), (302, 14106), (309, 14133), (312, 14142), (320, 14175),

Gene: Amanises_19 Start: 14538, Stop: 15809, Start Num: 25

Candidate Starts for Amanises_19:

(Start: 25 @14538 has 110 MA's), (41, 14604), (52, 14646), (67, 14709), (78, 14754), (88, 14787), (127, 14949), (128, 14952), (133, 14976), (158, 15072), (164, 15093), (173, 15120), (178, 15132), (180, 15138), (189, 15177), (202, 15213), (215, 15261), (246, 15411), (252, 15435), (272, 15558), (274, 15570), (276, 15579), (282, 15612), (287, 15618), (290, 15633), (297, 15654), (300, 15669), (302, 15675), (305, 15681), (309, 15702), (312, 15711), (320, 15744),

Gene: Amelia_19 Start: 13377, Stop: 14630, Start Num: 25

Candidate Starts for Amelia_19:

(Start: 25 @13377 has 110 MA's), (26, 13380), (31, 13401), (49, 13470), (64, 13536), (66, 13545), (90, 13632), (93, 13647), (127, 13791), (128, 13794), (130, 13809), (131, 13812), (133, 13818), (161, 13923), (164, 13935), (178, 13974), (189, 14019), (202, 14055), (212, 14097), (217, 14112), (235, 14190), (246, 14253), (252, 14277), (282, 14454), (296, 14490), (299, 14508), (302, 14517), (309, 14544), (312, 14553), (320, 14586),

Gene: AmiCi24_17 Start: 12929, Stop: 14173, Start Num: 25

Candidate Starts for AmiCi24_17:

(Start: 25 @12929 has 110 MA's), (49, 13022), (54, 13043), (64, 13088), (69, 13112), (90, 13184), (93, 13199), (126, 13340), (127, 13343), (128, 13346), (130, 13361), (131, 13364), (133, 13370), (152, 13451), (161, 13475), (164, 13487), (173, 13514), (189, 13571), (202, 13607), (212, 13649), (217,

13664), (234, 13739), (238, 13781), (241, 13787), (251, 13814), (252, 13826), (255, 13853), (282, 14003), (287, 14009), (296, 14039), (302, 14066), (309, 14093), (312, 14102), (320, 14135), (324, 14165),

Gene: Amphitrite_17 Start: 12929, Stop: 14173, Start Num: 25

Candidate Starts for Amphitrite_17:

(Start: 25 @12929 has 110 MA's), (49, 13022), (54, 13043), (64, 13088), (69, 13112), (90, 13184), (126, 13340), (127, 13343), (128, 13346), (130, 13361), (131, 13364), (133, 13370), (152, 13451), (164, 13487), (173, 13514), (189, 13571), (202, 13607), (212, 13649), (217, 13664), (234, 13739), (238, 13781), (241, 13787), (251, 13814), (252, 13826), (255, 13853), (282, 14003), (287, 14009), (296, 14039), (302, 14066), (309, 14093), (312, 14102), (320, 14135), (324, 14165),

Gene: Andrew_18 Start: 13390, Stop: 14640, Start Num: 25

Candidate Starts for Andrew_18:

(Start: 25 @13390 has 110 MA's), (49, 13483), (50, 13486), (52, 13498), (54, 13504), (64, 13549), (90, 13645), (93, 13660), (122, 13780), (125, 13798), (126, 13801), (127, 13804), (128, 13807), (130, 13822), (131, 13825), (133, 13831), (142, 13864), (152, 13912), (161, 13936), (164, 13948), (166, 13957), (173, 13975), (189, 14032), (202, 14068), (212, 14110), (215, 14116), (234, 14200), (241, 14251), (244, 14260), (251, 14278), (252, 14290), (255, 14317), (259, 14341), (260, 14344), (282, 14467), (296, 14503), (302, 14530), (312, 14566), (320, 14599), (324, 14629),

Gene: Anekin_20 Start: 15586, Stop: 16887, Start Num: 25

Candidate Starts for Anekin_20:

(Start: 25 @15586 has 110 MA's), (29, 15604), (64, 15745), (85, 15823), (105, 15895), (127, 15997), (131, 16018), (136, 16033), (160, 16120), (166, 16144), (178, 16174), (183, 16189), (188, 16216), (202, 16255), (207, 16273), (209, 16288), (216, 16306), (232, 16378), (261, 16516), (299, 16684), (310, 16726), (314, 16738), (327, 16834),

Gene: Antrice_18 Start: 13934, Stop: 15181, Start Num: 25

Candidate Starts for Antrice_18:

(Start: 25 @13934 has 110 MA's), (41, 14000), (49, 14027), (50, 14030), (54, 14048), (64, 14093), (98, 14219), (122, 14324), (127, 14348), (131, 14369), (133, 14375), (137, 14396), (144, 14420), (152, 14456), (161, 14480), (163, 14489), (164, 14492), (178, 14528), (182, 14540), (188, 14570), (189, 14573), (202, 14609), (212, 14651), (234, 14741), (250, 14816), (274, 14966), (282, 15008), (287, 15014), (290, 15029), (302, 15071), (309, 15098), (312, 15107), (316, 15119), (322, 15161),

Gene: ApoKipo_71 Start: 42421, Stop: 43596, Start Num: 25

Candidate Starts for ApoKipo_71:

(Start: 25 @42421 has 110 MA's), (30, 42442), (43, 42490), (51, 42523), (79, 42628), (96, 42688), (97, 42691), (112, 42745), (128, 42772), (138, 42820), (164, 42910), (165, 42916), (166, 42919), (178, 42955), (182, 42967), (185, 42988), (188, 42997), (191, 43009), (194, 43018), (225, 43129), (237, 43198), (238, 43204), (256, 43270), (272, 43360), (275, 43378), (280, 43402), (282, 43414), (312, 43513), (314, 43519), (318, 43537), (323, 43567),

Gene: Atlantica_17 Start: 12931, Stop: 14175, Start Num: 25

Candidate Starts for Atlantica_17:

(Start: 25 @12931 has 110 MA's), (49, 13024), (54, 13045), (64, 13090), (69, 13114), (90, 13186), (126, 13342), (127, 13345), (128, 13348), (130, 13363), (131, 13366), (133, 13372), (152, 13453), (161, 13477), (164, 13489), (173, 13516), (189, 13573), (202, 13609), (212, 13651), (217, 13666), (234, 13741), (238, 13783), (241, 13789), (251, 13816), (252, 13828), (255, 13855), (282, 14005), (287, 14011), (296, 14041), (302, 14068), (309, 14095), (312, 14104), (320, 14137), (324, 14167),

Gene: Auxilium_21 Start: 15623, Stop: 16924, Start Num: 25

Candidate Starts for Auxilium_21:

(Start: 25 @15623 has 110 MA's), (85, 15860), (92, 15884), (99, 15911), (110, 15962), (118, 15992), (127, 16034), (131, 16055), (136, 16070), (139, 16088), (188, 16253), (202, 16292), (207, 16310), (216, 16343), (232, 16415), (272, 16613), (274, 16625), (276, 16634), (279, 16649), (310, 16763), (314, 16775), (319, 16796), (321, 16808), (327, 16871),

Gene: Azaz_17 Start: 12982, Stop: 14229, Start Num: 25

Candidate Starts for Azaz_17:

(Start: 25 @12982 has 110 MA's), (49, 13075), (54, 13096), (64, 13141), (69, 13165), (90, 13237), (126, 13393), (127, 13396), (128, 13399), (130, 13414), (131, 13417), (152, 13504), (161, 13528), (164, 13540), (173, 13567), (189, 13624), (202, 13660), (217, 13717), (234, 13792), (238, 13834), (241, 13840), (251, 13867), (252, 13879), (255, 13906), (282, 14056), (287, 14062), (296, 14092), (302, 14119), (309, 14146), (312, 14155), (320, 14188), (324, 14218), (326, 14224),

Gene: B22_18 Start: 14570, Stop: 15742, Start Num: 44

Candidate Starts for B22_18:

(17, 14363), (22, 14420), (Start: 44 @14570 has 4 MA's), (59, 14627), (60, 14630), (69, 14672), (71, 14675), (76, 14693), (82, 14717), (107, 14798), (108, 14804), (135, 14918), (143, 14948), (148, 14978), (156, 14999), (163, 15023), (181, 15089), (182, 15092), (195, 15146), (197, 15155), (206, 15191), (208, 15200), (211, 15215), (226, 15278), (234, 15317), (237, 15347), (238, 15353), (239, 15356), (243, 15365), (245, 15371), (262, 15485), (265, 15506), (281, 15584), (283, 15590), (284, 15593), (294, 15623), (297, 15635), (300, 15650), (305, 15662),

Gene: Babushka_17 Start: 12984, Stop: 14228, Start Num: 25

Candidate Starts for Babushka_17:

(Start: 25 @12984 has 110 MA's), (49, 13077), (54, 13098), (64, 13143), (90, 13239), (93, 13254), (126, 13395), (127, 13398), (128, 13401), (130, 13416), (131, 13419), (133, 13425), (152, 13506), (161, 13530), (164, 13542), (173, 13569), (189, 13626), (202, 13662), (212, 13704), (217, 13719), (229, 13770), (234, 13794), (238, 13836), (241, 13842), (244, 13851), (251, 13869), (252, 13881), (255, 13908), (282, 14058), (287, 14064), (296, 14094), (302, 14121), (309, 14148), (312, 14157), (320, 14190), (324, 14220),

Gene: Basilisk_18 Start: 14668, Stop: 15918, Start Num: 25

Candidate Starts for Basilisk_18:

(Start: 25 @14668 has 110 MA's), (32, 14701), (41, 14734), (57, 14797), (64, 14827), (88, 14917), (99, 14956), (113, 15016), (120, 15040), (122, 15055), (127, 15079), (128, 15082), (131, 15100), (152, 15187), (161, 15211), (163, 15220), (164, 15223), (173, 15250), (189, 15307), (202, 15343), (215, 15391), (246, 15541), (252, 15565), (260, 15619), (262, 15637), (279, 15724), (282, 15742), (296, 15778), (300, 15799), (302, 15805), (305, 15811), (309, 15832), (312, 15841), (320, 15874),

Gene: BasketStar_21 Start: 15677, Stop: 16978, Start Num: 25

Candidate Starts for BasketStar_21:

(Start: 25 @15677 has 110 MA's), (75, 15881), (85, 15914), (92, 15938), (105, 15986), (110, 16016), (118, 16046), (127, 16088), (136, 16124), (139, 16142), (188, 16307), (202, 16346), (207, 16364), (216, 16397), (232, 16469), (272, 16667), (274, 16679), (310, 16817), (314, 16829), (319, 16850), (321, 16862), (327, 16925),

Gene: Bedetta_19 Start: 13377, Stop: 14630, Start Num: 25

Candidate Starts for Bedetta_19:

(Start: 25 @13377 has 110 MA's), (26, 13380), (31, 13401), (49, 13470), (64, 13536), (66, 13545), (90, 13632), (93, 13647), (127, 13791), (128, 13794), (130, 13809), (131, 13812), (133, 13818), (161, 13923), (164, 13935), (178, 13974), (189, 14019), (202, 14055), (212, 14097), (217, 14112), (235, 14190), (246, 14253), (252, 14277), (282, 14454), (296, 14490), (299, 14508), (302, 14517), (309,

14544), (312, 14553), (320, 14586),

Gene: BenchScraper_21 Start: 15638, Stop: 16939, Start Num: 25

Candidate Starts for BenchScraper_21:

(Start: 25 @15638 has 110 MA's), (75, 15842), (85, 15875), (92, 15899), (105, 15947), (110, 15977), (118, 16007), (127, 16049), (136, 16085), (139, 16103), (188, 16268), (202, 16307), (207, 16325), (216, 16358), (232, 16430), (272, 16628), (274, 16640), (276, 16649), (295, 16715), (310, 16778), (314, 16790), (319, 16811), (321, 16823), (327, 16886),

Gene: Bhageatrice_23 Start: 16913, Stop: 18214, Start Num: 25

Candidate Starts for Bhageatrice_23:

(Start: 25 @16913 has 110 MA's), (32, 16946), (92, 17174), (118, 17282), (127, 17324), (136, 17360), (139, 17378), (165, 17468), (188, 17543), (202, 17582), (207, 17600), (216, 17633), (232, 17705), (276, 17924), (295, 17990), (310, 18053), (314, 18065), (319, 18086), (321, 18098), (327, 18161),

Gene: Bible12_19 Start: 13380, Stop: 14633, Start Num: 25

Candidate Starts for Bible12_19:

(Start: 25 @13380 has 110 MA's), (26, 13383), (31, 13404), (49, 13473), (64, 13539), (66, 13548), (90, 13635), (93, 13650), (127, 13794), (128, 13797), (130, 13812), (131, 13815), (133, 13821), (161, 13926), (164, 13938), (178, 13977), (189, 14022), (202, 14058), (212, 14100), (217, 14115), (235, 14193), (246, 14256), (252, 14280), (282, 14457), (296, 14493), (299, 14511), (302, 14520), (309, 14547), (312, 14556), (320, 14589),

Gene: BillyTP_21 Start: 15407, Stop: 16708, Start Num: 25

Candidate Starts for BillyTP_21:

(Start: 25 @15407 has 110 MA's), (92, 15668), (118, 15776), (127, 15818), (136, 15854), (139, 15872), (165, 15962), (188, 16037), (202, 16076), (207, 16094), (216, 16127), (232, 16199), (272, 16397), (274, 16409), (276, 16418), (279, 16433), (310, 16547), (314, 16559), (319, 16580), (321, 16592), (327, 16655),

Gene: BlueShadow_21 Start: 15623, Stop: 16924, Start Num: 25

Candidate Starts for BlueShadow_21:

(Start: 25 @15623 has 110 MA's), (75, 15827), (85, 15860), (92, 15884), (105, 15932), (110, 15962), (118, 15992), (127, 16034), (136, 16070), (139, 16088), (188, 16253), (202, 16292), (207, 16310), (216, 16343), (223, 16370), (232, 16415), (272, 16613), (274, 16625), (310, 16763), (314, 16775), (319, 16796), (321, 16808), (327, 16871),

Gene: Bridgette_20 Start: 15685, Stop: 16986, Start Num: 25

Candidate Starts for Bridgette_20:

(Start: 25 @15685 has 110 MA's), (29, 15703), (40, 15745), (64, 15844), (118, 16054), (127, 16096), (136, 16132), (173, 16261), (178, 16273), (183, 16288), (188, 16315), (190, 16324), (202, 16354), (207, 16372), (216, 16405), (224, 16435), (231, 16468), (232, 16477), (261, 16615), (272, 16675), (274, 16687), (299, 16783), (310, 16825), (314, 16837), (321, 16870), (327, 16933),

Gene: Brynnie_18 Start: 14480, Stop: 15730, Start Num: 25

Candidate Starts for Brynnie_18:

(Start: 25 @14480 has 110 MA's), (32, 14513), (41, 14546), (57, 14609), (64, 14639), (88, 14729), (99, 14768), (113, 14828), (120, 14852), (122, 14867), (127, 14891), (128, 14894), (131, 14912), (152, 14999), (161, 15023), (163, 15032), (164, 15035), (173, 15062), (189, 15119), (202, 15155), (215, 15203), (235, 15290), (246, 15353), (252, 15377), (260, 15431), (262, 15449), (279, 15536), (282, 15554), (296, 15590), (300, 15611), (302, 15617), (309, 15644), (312, 15653), (320, 15686),

Gene: Camara_17 Start: 12932, Stop: 14176, Start Num: 25

Candidate Starts for Camara_17:

(Start: 25 @12932 has 110 MA's), (49, 13025), (54, 13046), (64, 13091), (69, 13115), (90, 13187), (93, 13202), (126, 13343), (127, 13346), (128, 13349), (130, 13364), (131, 13367), (133, 13373), (152, 13454), (161, 13478), (164, 13490), (173, 13517), (189, 13574), (202, 13610), (212, 13652), (217, 13667), (234, 13742), (238, 13784), (241, 13790), (251, 13817), (252, 13829), (255, 13856), (282, 14006), (287, 14012), (296, 14042), (302, 14069), (309, 14096), (312, 14105), (320, 14138), (324, 14168),

Gene: Chickaboom_17 Start: 13406, Stop: 14656, Start Num: 25

Candidate Starts for Chickaboom_17:

(Start: 25 @13406 has 110 MA's), (32, 13439), (41, 13472), (57, 13535), (64, 13565), (88, 13655), (99, 13694), (113, 13754), (120, 13778), (122, 13793), (127, 13817), (128, 13820), (131, 13838), (152, 13925), (161, 13949), (164, 13961), (173, 13988), (189, 14045), (202, 14081), (215, 14129), (235, 14216), (246, 14279), (252, 14303), (260, 14357), (262, 14375), (279, 14462), (296, 14516), (300, 14537), (302, 14543), (305, 14549), (309, 14570), (312, 14579), (320, 14612),

Gene: Chicken_18 Start: 14417, Stop: 15667, Start Num: 25

Candidate Starts for Chicken_18:

(Start: 25 @14417 has 110 MA's), (32, 14450), (41, 14483), (52, 14525), (66, 14585), (69, 14600), (88, 14666), (127, 14828), (128, 14831), (164, 14972), (178, 15011), (180, 15017), (189, 15056), (202, 15092), (229, 15200), (246, 15290), (252, 15314), (262, 15386), (264, 15401), (272, 15437), (282, 15491), (287, 15497), (289, 15509), (302, 15554), (305, 15560), (309, 15581), (312, 15590),

Gene: ChuckDuck_20 Start: 15527, Stop: 16828, Start Num: 25

Candidate Starts for ChuckDuck_20:

(Start: 25 @15527 has 110 MA's), (29, 15545), (64, 15686), (78, 15743), (85, 15764), (127, 15938), (135, 15971), (136, 15974), (183, 16130), (202, 16196), (207, 16214), (215, 16244), (216, 16247), (232, 16319), (272, 16517), (274, 16529), (299, 16625), (310, 16667), (314, 16679), (327, 16775),

Gene: Colusalem_18 Start: 13216, Stop: 14469, Start Num: 25

Candidate Starts for Colusalem_18:

(Start: 25 @13216 has 110 MA's), (26, 13219), (31, 13240), (49, 13309), (64, 13375), (66, 13384), (90, 13471), (93, 13486), (127, 13630), (128, 13633), (130, 13648), (131, 13651), (133, 13657), (161, 13762), (164, 13774), (178, 13813), (189, 13858), (202, 13894), (212, 13936), (217, 13951), (235, 14029), (246, 14092), (252, 14116), (282, 14293), (296, 14329), (299, 14347), (302, 14356), (309, 14383), (312, 14392), (320, 14425),

Gene: Constance_20 Start: 15667, Stop: 16968, Start Num: 25

Candidate Starts for Constance_20:

(Start: 25 @15667 has 110 MA's), (29, 15685), (64, 15826), (118, 16036), (127, 16078), (136, 16114), (154, 16183), (178, 16255), (183, 16270), (188, 16297), (202, 16336), (207, 16354), (215, 16384), (216, 16387), (220, 16396), (232, 16459), (261, 16597), (272, 16657), (274, 16669), (299, 16765), (310, 16807), (314, 16819), (327, 16915),

Gene: CookieBear_21 Start: 15623, Stop: 16924, Start Num: 25

Candidate Starts for CookieBear_21:

(Start: 25 @15623 has 110 MA's), (92, 15884), (118, 15992), (127, 16034), (136, 16070), (139, 16088), (165, 16178), (188, 16253), (202, 16292), (207, 16310), (216, 16343), (232, 16415), (272, 16613), (274, 16625), (310, 16763), (314, 16775), (319, 16796), (321, 16808), (327, 16871),

Gene: Coral_18 Start: 13216, Stop: 14469, Start Num: 25

Candidate Starts for Coral_18:

(Start: 25 @13216 has 110 MA's), (26, 13219), (31, 13240), (49, 13309), (64, 13375), (66, 13384), (90, 13471), (93, 13486), (127, 13630), (128, 13633), (130, 13648), (131, 13651), (133, 13657), (161, 13762), (164, 13774), (178, 13813), (189, 13858), (202, 13894), (212, 13936), (217, 13951), (235, 14029), (246, 14092), (252, 14116), (282, 14293), (296, 14329), (299, 14347), (302, 14356), (309, 14383), (312, 14392), (320, 14425),

Gene: CosmicBrownie_21 Start: 15581, Stop: 16882, Start Num: 25

Candidate Starts for CosmicBrownie_21:

(Start: 25 @15581 has 110 MA's), (64, 15740), (75, 15785), (89, 15833), (92, 15842), (118, 15950), (127, 15992), (131, 16013), (136, 16028), (139, 16046), (165, 16136), (188, 16211), (202, 16250), (207, 16268), (216, 16301), (232, 16373), (272, 16571), (276, 16592), (279, 16607), (310, 16721), (314, 16733), (319, 16754), (321, 16766), (327, 16829),

Gene: Cote_19 Start: 13377, Stop: 14630, Start Num: 25

Candidate Starts for Cote_19:

(Start: 25 @13377 has 110 MA's), (26, 13380), (31, 13401), (49, 13470), (64, 13536), (66, 13545), (90, 13632), (93, 13647), (127, 13791), (128, 13794), (130, 13809), (131, 13812), (133, 13818), (161, 13923), (164, 13935), (178, 13974), (189, 14019), (202, 14055), (212, 14097), (217, 14112), (235, 14190), (246, 14253), (252, 14277), (282, 14454), (296, 14490), (299, 14508), (302, 14517), (309, 14544), (312, 14553), (320, 14586),

Gene: Crescenzo_21 Start: 15514, Stop: 16815, Start Num: 25

Candidate Starts for Crescenzo_21:

(Start: 25 @15514 has 110 MA's), (29, 15532), (64, 15673), (85, 15751), (105, 15823), (127, 15925), (131, 15946), (136, 15961), (160, 16048), (166, 16072), (178, 16102), (183, 16117), (188, 16144), (202, 16183), (207, 16201), (209, 16216), (216, 16234), (232, 16306), (261, 16444), (299, 16612), (310, 16654), (314, 16666), (327, 16762),

Gene: CurlyFries_21 Start: 20993, Stop: 22120, Start Num: 38

Candidate Starts for CurlyFries_21:

(Start: 38 @20993 has 5 MA's), (64, 21095), (72, 21119), (90, 21185), (108, 21248), (116, 21290), (129, 21347), (133, 21359), (151, 21437), (159, 21455), (160, 21458), (187, 21557), (188, 21563), (201, 21608), (204, 21620), (205, 21623), (219, 21677), (223, 21698), (235, 21752), (239, 21788), (249, 21809), (255, 21854), (260, 21881), (261, 21890), (263, 21908), (268, 21932), (281, 21998), (282, 22001), (287, 22007), (290, 22022), (293, 22028), (301, 22061),

Gene: Cygnet_18 Start: 14044, Stop: 15291, Start Num: 25

Candidate Starts for Cygnet_18:

(Start: 25 @14044 has 110 MA's), (49, 14137), (54, 14158), (64, 14203), (98, 14329), (126, 14455), (128, 14461), (131, 14479), (133, 14485), (137, 14506), (144, 14530), (152, 14566), (161, 14590), (163, 14599), (164, 14602), (178, 14638), (182, 14650), (188, 14680), (189, 14683), (202, 14719), (212, 14761), (234, 14851), (250, 14926), (274, 15076), (282, 15118), (287, 15124), (290, 15139), (302, 15181), (309, 15208), (312, 15217), (316, 15229), (322, 15271),

Gene: Damocles_19 Start: 13377, Stop: 14630, Start Num: 25

Candidate Starts for Damocles_19:

(Start: 25 @13377 has 110 MA's), (26, 13380), (31, 13401), (49, 13470), (64, 13536), (66, 13545), (90, 13632), (93, 13647), (127, 13791), (128, 13794), (130, 13809), (131, 13812), (133, 13818), (161, 13923), (164, 13935), (178, 13974), (189, 14019), (202, 14055), (212, 14097), (217, 14112), (235, 14190), (246, 14253), (252, 14277), (282, 14454), (296, 14490), (299, 14508), (302, 14517), (309, 14544), (312, 14553), (320, 14586),

Gene: DanHam62_17 Start: 12931, Stop: 14175, Start Num: 25

Candidate Starts for DanHam62_17:

(Start: 25 @12931 has 110 MA's), (49, 13024), (54, 13045), (64, 13090), (69, 13114), (90, 13186), (126, 13342), (127, 13345), (128, 13348), (130, 13363), (131, 13366), (133, 13372), (152, 13453), (161, 13477), (164, 13489), (173, 13516), (189, 13573), (202, 13609), (212, 13651), (217, 13666), (234, 13741), (238, 13783), (241, 13789), (251, 13816), (252, 13828), (255, 13855), (282, 14005), (287, 14011), (296, 14041), (302, 14068), (309, 14095), (312, 14104), (320, 14137), (324, 14167),

Gene: Daob_19 Start: 13380, Stop: 14633, Start Num: 25

Candidate Starts for Daob_19:

(Start: 25 @13380 has 110 MA's), (26, 13383), (31, 13404), (49, 13473), (64, 13539), (66, 13548), (90, 13635), (93, 13650), (127, 13794), (128, 13797), (130, 13812), (131, 13815), (133, 13821), (161, 13926), (164, 13938), (178, 13977), (189, 14022), (202, 14058), (212, 14100), (217, 14115), (235, 14193), (246, 14256), (252, 14280), (282, 14457), (296, 14493), (299, 14511), (302, 14520), (309, 14547), (312, 14556), (320, 14589),

Gene: DarwinJr_24 Start: 16818, Stop: 18119, Start Num: 25

Candidate Starts for DarwinJr_24:

(Start: 25 @16818 has 110 MA's), (29, 16836), (64, 16977), (85, 17055), (105, 17127), (127, 17229), (131, 17250), (136, 17265), (160, 17352), (166, 17376), (178, 17406), (183, 17421), (188, 17448), (202, 17487), (207, 17505), (209, 17520), (216, 17538), (232, 17610), (261, 17748), (299, 17916), (310, 17958), (314, 17970), (327, 18066),

Gene: Ding_21 Start: 15686, Stop: 16987, Start Num: 25

Candidate Starts for Ding_21:

(Start: 25 @15686 has 110 MA's), (64, 15845), (78, 15902), (85, 15923), (99, 15974), (118, 16055), (127, 16097), (128, 16100), (131, 16118), (136, 16133), (152, 16199), (165, 16241), (178, 16274), (202, 16355), (207, 16373), (209, 16388), (216, 16406), (232, 16478), (253, 16559), (255, 16580), (261, 16616), (265, 16646), (272, 16676), (276, 16697), (299, 16784), (310, 16826), (327, 16934),

Gene: Doucette_18 Start: 14743, Stop: 15915, Start Num: 44

Candidate Starts for Doucette_18:

(4, 14245), (9, 14410), (10, 14416), (17, 14536), (22, 14593), (23, 14641), (Start: 44 @14743 has 4 MA's), (59, 14800), (60, 14803), (69, 14845), (71, 14848), (76, 14866), (82, 14890), (107, 14971), (108, 14977), (135, 15091), (148, 15151), (156, 15172), (163, 15196), (181, 15262), (182, 15265), (195, 15319), (197, 15328), (200, 15343), (206, 15364), (208, 15373), (211, 15388), (215, 15403), (226, 15451), (234, 15490), (237, 15520), (238, 15526), (239, 15529), (243, 15538), (245, 15544), (253, 15577), (261, 15649), (262, 15658), (265, 15679), (281, 15757), (283, 15763), (284, 15766), (293, 15793), (294, 15796), (297, 15808), (300, 15823), (305, 15835),

Gene: E6_19 Start: 14791, Stop: 15963, Start Num: 44

Candidate Starts for E6_19:

(4, 14293), (9, 14458), (10, 14464), (17, 14584), (21, 14629), (22, 14641), (Start: 44 @14791 has 4 MA's), (59, 14848), (60, 14851), (69, 14893), (71, 14896), (76, 14914), (82, 14938), (107, 15019), (108, 15025), (135, 15139), (156, 15220), (163, 15244), (181, 15310), (182, 15313), (195, 15367), (197, 15376), (200, 15391), (206, 15412), (208, 15421), (211, 15436), (226, 15499), (237, 15568), (238, 15574), (239, 15577), (243, 15586), (245, 15592), (253, 15625), (261, 15697), (262, 15706), (265, 15727), (281, 15805), (283, 15811), (284, 15814), (293, 15841), (294, 15844), (297, 15856), (300, 15871), (305, 15883),

Gene: Edmundo_69 Start: 42213, Stop: 43382, Start Num: 25

Candidate Starts for Edmundo_69:

(Start: 25 @42213 has 110 MA's), (27, 42222), (30, 42234), (35, 42261), (51, 42318), (54, 42324), (65, 42366), (79, 42423), (85, 42441), (88, 42453), (93, 42474), (128, 42567), (133, 42591), (138, 42615),

(144, 42636), (146, 42651), (173, 42732), (178, 42744), (183, 42759), (185, 42777), (202, 42825), (223, 42909), (242, 43002), (247, 43008), (269, 43134), (282, 43203), (312, 43302), (320, 43335),

Gene: Eesa_18 Start: 14631, Stop: 15881, Start Num: 25

Candidate Starts for Eesa_18:

(Start: 25 @14631 has 110 MA's), (32, 14664), (41, 14697), (69, 14814), (88, 14880), (127, 15042), (128, 15045), (147, 15132), (164, 15186), (173, 15213), (178, 15225), (180, 15231), (188, 15267), (189, 15270), (202, 15306), (215, 15354), (230, 15420), (246, 15504), (252, 15528), (272, 15651), (274, 15663), (276, 15672), (282, 15705), (287, 15711), (290, 15726), (297, 15747), (300, 15762), (302, 15768), (305, 15774), (309, 15795), (312, 15804), (320, 15837),

Gene: Eileen_20 Start: 15628, Stop: 16929, Start Num: 25

Candidate Starts for Eileen_20:

(Start: 25 @15628 has 110 MA's), (29, 15646), (40, 15688), (64, 15787), (118, 15997), (127, 16039), (136, 16075), (178, 16216), (183, 16231), (188, 16258), (190, 16267), (202, 16297), (207, 16315), (216, 16348), (232, 16420), (261, 16558), (272, 16618), (274, 16630), (299, 16726), (310, 16768), (314, 16780), (327, 16876),

Gene: Fingolfin_17 Start: 12932, Stop: 14176, Start Num: 25

Candidate Starts for Fingolfin_17:

(Start: 25 @12932 has 110 MA's), (49, 13025), (54, 13046), (64, 13091), (69, 13115), (90, 13187), (93, 13202), (126, 13343), (127, 13346), (128, 13349), (130, 13364), (131, 13367), (133, 13373), (152, 13454), (161, 13478), (164, 13490), (173, 13517), (189, 13574), (202, 13610), (212, 13652), (217, 13667), (234, 13742), (238, 13784), (241, 13790), (251, 13817), (252, 13829), (255, 13856), (282, 14006), (287, 14012), (296, 14042), (302, 14069), (309, 14096), (312, 14105), (320, 14138), (324, 14168),

Gene: Footloose_20 Start: 13870, Stop: 14982, Start Num: 34

Candidate Starts for Footloose_20:

(Start: 34 @13870 has 1 MA's), (42, 13891), (45, 13903), (53, 13933), (62, 13972), (67, 13993), (70, 14005), (80, 14044), (84, 14056), (87, 14071), (91, 14080), (94, 14098), (102, 14119), (106, 14131), (109, 14164), (111, 14170), (115, 14185), (121, 14215), (133, 14263), (157, 14353), (160, 14362), (162, 14371), (169, 14398), (172, 14404), (176, 14413), (179, 14419), (186, 14446), (188, 14455), (190, 14464), (193, 14473), (202, 14494), (216, 14545), (218, 14554), (220, 14560), (225, 14587), (234, 14629), (248, 14680), (252, 14695), (253, 14701), (259, 14746), (266, 14791), (277, 14842), (278, 14851), (291, 14899), (292, 14902), (303, 14941), (304, 14944), (306, 14950), (308, 14956), (311, 14974),

Gene: FosterFrank_20 Start: 15625, Stop: 16926, Start Num: 25

Candidate Starts for FosterFrank_20:

(Start: 25 @15625 has 110 MA's), (29, 15643), (64, 15784), (118, 15994), (127, 16036), (136, 16072), (154, 16141), (178, 16213), (183, 16228), (188, 16255), (202, 16294), (207, 16312), (215, 16342), (216, 16345), (220, 16354), (232, 16417), (261, 16555), (272, 16615), (274, 16627), (299, 16723), (310, 16765), (314, 16777), (327, 16873),

Gene: G4_18 Start: 14733, Stop: 15905, Start Num: 44

Candidate Starts for G4_18:

(17, 14526), (21, 14571), (22, 14583), (Start: 44 @14733 has 4 MA's), (59, 14790), (60, 14793), (69, 14835), (71, 14838), (76, 14856), (82, 14880), (107, 14961), (108, 14967), (135, 15081), (143, 15111), (156, 15162), (163, 15186), (181, 15252), (182, 15255), (195, 15309), (197, 15318), (206, 15354), (208, 15363), (211, 15378), (226, 15441), (234, 15480), (237, 15510), (238, 15516), (239, 15519), (243, 15528), (245, 15534), (253, 15567), (261, 15639), (262, 15648), (265, 15669), (273, 15702), (281, 15747), (283, 15753), (284, 15756), (293, 15783), (294, 15786), (297, 15798), (300, 15813),

(305, 15825),

Gene: Globfish_21 Start: 15696, Stop: 16997, Start Num: 25

Candidate Starts for Globfish_21:

(Start: 25 @15696 has 110 MA's), (92, 15957), (118, 16065), (127, 16107), (139, 16161), (166, 16254), (188, 16326), (202, 16365), (207, 16383), (215, 16413), (216, 16416), (224, 16446), (232, 16488), (253, 16569), (272, 16686), (276, 16707), (295, 16773), (310, 16836), (314, 16848), (327, 16944),

Gene: GlobiWarming_20 Start: 15621, Stop: 16922, Start Num: 25

Candidate Starts for GlobiWarming_20:

(Start: 25 @15621 has 110 MA's), (29, 15639), (118, 15990), (127, 16032), (136, 16068), (178, 16209), (183, 16224), (188, 16251), (202, 16290), (207, 16308), (216, 16341), (231, 16404), (232, 16413), (261, 16551), (272, 16611), (274, 16623), (299, 16719), (310, 16761), (314, 16773), (327, 16869),

Gene: Glotell_17 Start: 12929, Stop: 14173, Start Num: 25

Candidate Starts for Glotell_17:

(Start: 25 @12929 has 110 MA's), (49, 13022), (54, 13043), (64, 13088), (69, 13112), (90, 13184), (126, 13340), (127, 13343), (128, 13346), (130, 13361), (131, 13364), (133, 13370), (152, 13451), (161, 13475), (164, 13487), (173, 13514), (189, 13571), (202, 13607), (212, 13649), (217, 13664), (234, 13739), (238, 13781), (241, 13787), (251, 13814), (252, 13826), (255, 13853), (282, 14003), (287, 14009), (296, 14039), (302, 14066), (309, 14093), (312, 14102), (320, 14135), (324, 14165),

Gene: Gorpy_21 Start: 15632, Stop: 16933, Start Num: 25

Candidate Starts for Gorpy_21:

(Start: 25 @15632 has 110 MA's), (92, 15893), (99, 15920), (110, 15971), (118, 16001), (127, 16043), (131, 16064), (136, 16079), (139, 16097), (188, 16262), (202, 16301), (207, 16319), (216, 16352), (232, 16424), (272, 16622), (274, 16634), (276, 16643), (279, 16658), (310, 16772), (314, 16784), (319, 16805), (321, 16817), (327, 16880),

Gene: GramZayde_18 Start: 13216, Stop: 14469, Start Num: 25

Candidate Starts for GramZayde_18:

(Start: 25 @13216 has 110 MA's), (26, 13219), (31, 13240), (49, 13309), (64, 13375), (66, 13384), (90, 13471), (93, 13486), (127, 13630), (128, 13633), (130, 13648), (131, 13651), (133, 13657), (161, 13762), (164, 13774), (178, 13813), (189, 13858), (202, 13894), (212, 13936), (217, 13951), (235, 14029), (246, 14092), (252, 14116), (282, 14293), (296, 14329), (299, 14347), (302, 14356), (309, 14383), (312, 14392), (320, 14425),

Gene: Gravel_19 Start: 14537, Stop: 15787, Start Num: 25

Candidate Starts for Gravel_19:

(Start: 25 @14537 has 110 MA's), (41, 14603), (52, 14645), (67, 14708), (78, 14753), (88, 14786), (127, 14948), (128, 14951), (158, 15071), (164, 15092), (173, 15119), (178, 15131), (180, 15137), (189, 15176), (202, 15212), (215, 15260), (246, 15410), (252, 15434), (272, 15557), (274, 15569), (276, 15578), (282, 15611), (287, 15617), (290, 15632), (297, 15653), (300, 15668), (302, 15674), (305, 15680), (309, 15701), (312, 15710), (320, 15743),

Gene: GumGum_21 Start: 15572, Stop: 16873, Start Num: 25

Candidate Starts for GumGum_21:

(Start: 25 @15572 has 110 MA's), (64, 15731), (75, 15776), (92, 15833), (118, 15941), (127, 15983), (136, 16019), (139, 16037), (165, 16127), (188, 16202), (202, 16241), (207, 16259), (216, 16292), (232, 16364), (272, 16562), (274, 16574), (276, 16583), (310, 16712), (314, 16724), (319, 16745), (321, 16757), (327, 16820),

Gene: HamCheese_17 Start: 12931, Stop: 14175, Start Num: 25

Candidate Starts for HamCheese_17:

(Start: 25 @12931 has 110 MA's), (49, 13024), (54, 13045), (64, 13090), (69, 13114), (90, 13186), (126, 13342), (127, 13345), (128, 13348), (130, 13363), (131, 13366), (133, 13372), (152, 13453), (164, 13489), (173, 13516), (189, 13573), (202, 13609), (212, 13651), (217, 13666), (234, 13741), (238, 13783), (241, 13789), (251, 13816), (252, 13828), (255, 13855), (282, 14005), (287, 14011), (296, 14041), (302, 14068), (309, 14095), (312, 14104), (320, 14137), (324, 14167),

Gene: HannahPhantana_19 Start: 13380, Stop: 14633, Start Num: 25

Candidate Starts for HannahPhantana_19:

(Start: 25 @13380 has 110 MA's), (26, 13383), (31, 13404), (49, 13473), (64, 13539), (66, 13548), (90, 13635), (93, 13650), (127, 13794), (128, 13797), (130, 13812), (131, 13815), (133, 13821), (161, 13926), (164, 13938), (178, 13977), (189, 14022), (202, 14058), (212, 14100), (217, 14115), (235, 14193), (246, 14256), (252, 14280), (282, 14457), (296, 14493), (299, 14511), (302, 14520), (309, 14547), (312, 14556), (320, 14589),

Gene: Henrique_20 Start: 15646, Stop: 16947, Start Num: 25

Candidate Starts for Henrique_20:

(Start: 25 @15646 has 110 MA's), (29, 15664), (64, 15805), (118, 16015), (127, 16057), (136, 16093), (173, 16222), (178, 16234), (183, 16249), (188, 16276), (190, 16285), (202, 16315), (207, 16333), (216, 16366), (224, 16396), (231, 16429), (232, 16438), (261, 16576), (272, 16636), (274, 16648), (299, 16744), (310, 16786), (314, 16798), (327, 16894),

Gene: Hestia_21 Start: 15801, Stop: 17102, Start Num: 25

Candidate Starts for Hestia_21:

(Start: 25 @15801 has 110 MA's), (92, 16062), (118, 16170), (127, 16212), (136, 16248), (139, 16266), (165, 16356), (188, 16431), (202, 16470), (207, 16488), (216, 16521), (232, 16593), (272, 16791), (274, 16803), (276, 16812), (310, 16941), (314, 16953), (319, 16974), (321, 16986), (327, 17049),

Gene: Hillester_21 Start: 15623, Stop: 16924, Start Num: 25

Candidate Starts for Hillester_21:

(Start: 25 @15623 has 110 MA's), (85, 15860), (92, 15884), (99, 15911), (110, 15962), (118, 15992), (127, 16034), (131, 16055), (136, 16070), (139, 16088), (188, 16253), (202, 16292), (207, 16310), (216, 16343), (232, 16415), (272, 16613), (274, 16625), (276, 16634), (279, 16649), (310, 16763), (314, 16775), (319, 16796), (321, 16808), (327, 16871),

Gene: HotPotato_20 Start: 15629, Stop: 16930, Start Num: 25

Candidate Starts for HotPotato_20:

(Start: 25 @15629 has 110 MA's), (29, 15647), (64, 15788), (118, 15998), (127, 16040), (136, 16076), (178, 16217), (183, 16232), (188, 16259), (202, 16298), (207, 16316), (216, 16349), (232, 16421), (261, 16559), (272, 16619), (274, 16631), (299, 16727), (310, 16769), (314, 16781), (327, 16877),

Gene: Isolde_21 Start: 15458, Stop: 16759, Start Num: 25

Candidate Starts for Isolde_21:

(Start: 25 @15458 has 110 MA's), (92, 15719), (118, 15827), (127, 15869), (136, 15905), (139, 15923), (165, 16013), (188, 16088), (202, 16127), (207, 16145), (216, 16178), (232, 16250), (272, 16448), (274, 16460), (276, 16469), (279, 16484), (310, 16598), (314, 16610), (319, 16631), (321, 16643), (327, 16706),

Gene: JakeTheSnake_21 Start: 15524, Stop: 16825, Start Num: 25

Candidate Starts for JakeTheSnake_21:

(Start: 25 @15524 has 110 MA's), (64, 15683), (127, 15935), (133, 15962), (152, 16037), (178, 16112), (182, 16124), (183, 16127), (202, 16193), (207, 16211), (215, 16241), (232, 16316), (272, 16514), (310, 16664), (314, 16676), (327, 16772),

Gene: Jamun_18 Start: 14074, Stop: 15324, Start Num: 25

Candidate Starts for Jamun_18:

(Start: 25 @14074 has 110 MA's), (32, 14107), (41, 14140), (57, 14203), (64, 14233), (88, 14323), (99, 14362), (113, 14422), (120, 14446), (122, 14461), (127, 14485), (128, 14488), (131, 14506), (152, 14593), (161, 14617), (164, 14629), (173, 14656), (189, 14713), (202, 14749), (215, 14797), (235, 14884), (246, 14947), (252, 14971), (260, 15025), (262, 15043), (279, 15130), (282, 15148), (296, 15184), (300, 15205), (302, 15211), (309, 15238), (312, 15247), (320, 15280),

Gene: JellyBread_21 Start: 15616, Stop: 16917, Start Num: 25

Candidate Starts for JellyBread_21:

(Start: 25 @15616 has 110 MA's), (85, 15853), (92, 15877), (99, 15904), (110, 15955), (118, 15985), (127, 16027), (131, 16048), (136, 16063), (139, 16081), (188, 16246), (202, 16285), (207, 16303), (216, 16336), (232, 16408), (272, 16606), (274, 16618), (276, 16627), (279, 16642), (310, 16756), (314, 16768), (319, 16789), (321, 16801), (327, 16864),

Gene: Jerole_19 Start: 13377, Stop: 14630, Start Num: 25

Candidate Starts for Jerole_19:

(Start: 25 @13377 has 110 MA's), (26, 13380), (31, 13401), (49, 13470), (64, 13536), (66, 13545), (90, 13632), (93, 13647), (127, 13791), (128, 13794), (130, 13809), (131, 13812), (133, 13818), (161, 13923), (164, 13935), (178, 13974), (189, 14019), (202, 14055), (212, 14097), (217, 14112), (235, 14190), (246, 14253), (252, 14277), (282, 14454), (296, 14490), (299, 14508), (302, 14517), (309, 14544), (312, 14553), (320, 14586),

Gene: JfliX2_22 Start: 23249, Stop: 24382, Start Num: 38

Candidate Starts for JfliX2_22:

(Start: 38 @23249 has 5 MA's), (55, 23312), (56, 23318), (64, 23351), (90, 23441), (108, 23504), (116, 23546), (138, 23642), (139, 23645), (168, 23756), (187, 23816), (204, 23879), (223, 23957), (239, 24047), (260, 24140), (263, 24167), (279, 24242), (281, 24257), (290, 24281),

Gene: Judy_21 Start: 15938, Stop: 17239, Start Num: 25

Candidate Starts for Judy_21:

(Start: 25 @15938 has 110 MA's), (29, 15956), (64, 16097), (118, 16307), (127, 16349), (136, 16385), (154, 16454), (178, 16526), (183, 16541), (188, 16568), (202, 16607), (207, 16625), (215, 16655), (220, 16667), (232, 16730), (261, 16868), (272, 16928), (274, 16940), (299, 17036), (310, 17078), (314, 17090), (327, 17186),

Gene: Juno112_17 Start: 12932, Stop: 14176, Start Num: 25

Candidate Starts for Juno112_17:

(Start: 25 @12932 has 110 MA's), (49, 13025), (54, 13046), (64, 13091), (69, 13115), (90, 13187), (93, 13202), (126, 13343), (127, 13346), (128, 13349), (130, 13364), (131, 13367), (133, 13373), (152, 13454), (161, 13478), (164, 13490), (173, 13517), (189, 13574), (202, 13610), (212, 13652), (217, 13667), (234, 13742), (238, 13784), (241, 13790), (251, 13817), (252, 13829), (255, 13856), (282, 14006), (287, 14012), (296, 14042), (302, 14069), (309, 14096), (312, 14105), (320, 14138), (324, 14168),

Gene: KHumphrey_17 Start: 12929, Stop: 14173, Start Num: 25

Candidate Starts for KHumphrey_17:

(Start: 25 @12929 has 110 MA's), (49, 13022), (54, 13043), (64, 13088), (69, 13112), (90, 13184), (126, 13340), (127, 13343), (128, 13346), (130, 13361), (131, 13364), (133, 13370), (152, 13451), (161, 13475), (164, 13487), (173, 13514), (189, 13571), (202, 13607), (212, 13649), (217, 13664), (234, 13739), (238, 13781), (241, 13787), (251, 13814), (252, 13826), (255, 13853), (282, 14003), (287, 14009), (296, 14039), (302, 14066), (309, 14093), (312, 14102), (320, 14135), (324, 14165),

Gene: Kabloowy_21 Start: 15812, Stop: 17113, Start Num: 25

Candidate Starts for Kabloowy_21:

(Start: 25 @15812 has 110 MA's), (32, 15845), (92, 16073), (118, 16181), (127, 16223), (131, 16244), (136, 16259), (139, 16277), (165, 16367), (188, 16442), (202, 16481), (207, 16499), (216, 16532), (232, 16604), (272, 16802), (276, 16823), (279, 16838), (310, 16952), (314, 16964), (319, 16985), (321, 16997), (327, 17060),

Gene: Karkharias_20 Start: 15625, Stop: 16926, Start Num: 25

Candidate Starts for Karkharias_20:

(Start: 25 @15625 has 110 MA's), (29, 15643), (40, 15685), (64, 15784), (118, 15994), (127, 16036), (136, 16072), (173, 16201), (178, 16213), (183, 16228), (188, 16255), (190, 16264), (202, 16294), (207, 16312), (216, 16345), (224, 16375), (231, 16408), (232, 16417), (261, 16555), (272, 16615), (274, 16627), (299, 16723), (310, 16765), (314, 16777), (321, 16810), (327, 16873),

Gene: KayMoney_20 Start: 15529, Stop: 16830, Start Num: 25

Candidate Starts for KayMoney_20:

(Start: 25 @15529 has 110 MA's), (29, 15547), (64, 15688), (78, 15745), (85, 15766), (127, 15940), (135, 15973), (136, 15976), (183, 16132), (202, 16198), (207, 16216), (215, 16246), (216, 16249), (232, 16321), (252, 16396), (272, 16519), (274, 16531), (299, 16627), (310, 16669), (314, 16681), (327, 16777),

Gene: KendraB23_19 Start: 14538, Stop: 15788, Start Num: 25

Candidate Starts for KendraB23_19:

(Start: 25 @14538 has 110 MA's), (41, 14604), (52, 14646), (67, 14709), (78, 14754), (88, 14787), (127, 14949), (128, 14952), (158, 15072), (164, 15093), (173, 15120), (178, 15132), (180, 15138), (189, 15177), (202, 15213), (215, 15261), (246, 15411), (252, 15435), (272, 15558), (274, 15570), (276, 15579), (282, 15612), (287, 15618), (290, 15633), (297, 15654), (300, 15669), (302, 15675), (305, 15681), (309, 15702), (312, 15711), (320, 15744),

Gene: Kepler_18 Start: 13215, Stop: 14468, Start Num: 25

Candidate Starts for Kepler_18:

(Start: 25 @13215 has 110 MA's), (26, 13218), (31, 13239), (49, 13308), (64, 13374), (66, 13383), (90, 13470), (93, 13485), (127, 13629), (128, 13632), (130, 13647), (131, 13650), (133, 13656), (161, 13761), (164, 13773), (178, 13812), (189, 13857), (202, 13893), (212, 13935), (217, 13950), (235, 14028), (246, 14091), (252, 14115), (282, 14292), (296, 14328), (299, 14346), (302, 14355), (309, 14382), (312, 14391), (320, 14424),

Gene: Kharcho_45 Start: 24006, Stop: 25181, Start Num: 25

Candidate Starts for Kharcho_45:

(1, 23298), (8, 23742), (13, 23829), (Start: 25 @24006 has 110 MA's), (30, 24027), (33, 24042), (65, 24156), (79, 24213), (85, 24231), (93, 24264), (126, 24351), (138, 24405), (140, 24411), (164, 24495), (166, 24504), (185, 24573), (188, 24582), (191, 24594), (194, 24603), (221, 24696), (223, 24705), (237, 24783), (238, 24789), (272, 24945), (274, 24957), (282, 24999), (288, 25008), (312, 25098), (318, 25122),

Gene: Kovu_67 Start: 42081, Stop: 43256, Start Num: 25

Candidate Starts for Kovu_67:

(13, 41904), (Start: 25 @42081 has 110 MA's), (30, 42102), (43, 42150), (51, 42183), (79, 42288), (96, 42348), (97, 42351), (112, 42405), (128, 42432), (138, 42480), (164, 42570), (165, 42576), (182, 42627), (185, 42648), (188, 42657), (191, 42669), (194, 42678), (237, 42858), (238, 42864), (256, 42930), (272, 43020), (275, 43038), (312, 43173), (314, 43179), (318, 43197), (323, 43227),

Gene: Kuleana_18 Start: 13395, Stop: 14642, Start Num: 25

Candidate Starts for Kuleana_18:

(Start: 25 @13395 has 110 MA's), (49, 13488), (50, 13491), (52, 13503), (54, 13509), (64, 13554), (66, 13563), (68, 13572), (83, 13626), (98, 13680), (128, 13812), (131, 13830), (133, 13836), (164, 13953), (182, 14001), (189, 14034), (202, 14070), (210, 14106), (215, 14118), (222, 14148), (232, 14196), (238, 14247), (243, 14259), (252, 14292), (279, 14451), (282, 14469), (287, 14475), (290, 14490), (302, 14532), (305, 14538), (309, 14559), (312, 14568), (313, 14571), (325, 14637),

Gene: Laphuphu24k_16 Start: 12931, Stop: 14175, Start Num: 25

Candidate Starts for Laphuphu24k_16:

(Start: 25 @12931 has 110 MA's), (49, 13024), (54, 13045), (64, 13090), (69, 13114), (90, 13186), (126, 13342), (127, 13345), (128, 13348), (130, 13363), (131, 13366), (133, 13372), (152, 13453), (164, 13489), (173, 13516), (189, 13573), (202, 13609), (212, 13651), (217, 13666), (234, 13741), (238, 13783), (241, 13789), (251, 13816), (252, 13828), (255, 13855), (282, 14005), (287, 14011), (296, 14041), (302, 14068), (309, 14095), (312, 14104), (320, 14137), (324, 14167),

Gene: Laroye_69 Start: 41604, Stop: 42773, Start Num: 25

Candidate Starts for Laroye_69:

(Start: 25 @41604 has 110 MA's), (27, 41613), (30, 41625), (35, 41652), (51, 41709), (54, 41715), (79, 41814), (85, 41832), (88, 41844), (93, 41865), (128, 41958), (133, 41982), (138, 42006), (144, 42027), (171, 42120), (173, 42123), (175, 42129), (178, 42135), (182, 42147), (185, 42168), (202, 42216), (211, 42255), (223, 42300), (242, 42393), (247, 42399), (256, 42450), (280, 42582), (282, 42594), (312, 42693), (320, 42726),

Gene: Lasker_21 Start: 15631, Stop: 16932, Start Num: 25

Candidate Starts for Lasker_21:

(Start: 25 @15631 has 110 MA's), (75, 15835), (85, 15868), (92, 15892), (105, 15940), (110, 15970), (118, 16000), (127, 16042), (136, 16078), (139, 16096), (188, 16261), (202, 16300), (207, 16318), (216, 16351), (232, 16423), (272, 16621), (274, 16633), (310, 16771), (314, 16783), (319, 16804), (321, 16816), (327, 16879),

Gene: Lawnathon_21 Start: 15552, Stop: 16853, Start Num: 25

Candidate Starts for Lawnathon_21:

(Start: 25 @15552 has 110 MA's), (92, 15813), (118, 15921), (127, 15963), (136, 15999), (139, 16017), (165, 16107), (188, 16182), (202, 16221), (207, 16239), (216, 16272), (232, 16344), (272, 16542), (274, 16554), (276, 16563), (279, 16578), (310, 16692), (314, 16704), (319, 16725), (321, 16737), (327, 16800),

Gene: LeBruni_21 Start: 15423, Stop: 16724, Start Num: 25

Candidate Starts for LeBruni_21:

(14, 15246), (15, 15249), (Start: 25 @15423 has 110 MA's), (29, 15441), (40, 15483), (64, 15582), (78, 15639), (105, 15732), (113, 15771), (127, 15834), (131, 15855), (134, 15864), (165, 15978), (166, 15981), (171, 15996), (178, 16011), (182, 16023), (190, 16062), (202, 16092), (207, 16110), (215, 16140), (216, 16143), (220, 16152), (232, 16215), (255, 16317), (261, 16353), (299, 16521), (310, 16563), (327, 16671),

Gene: Leona_17 Start: 12982, Stop: 14229, Start Num: 25

Candidate Starts for Leona_17:

(Start: 25 @12982 has 110 MA's), (49, 13075), (54, 13096), (64, 13141), (69, 13165), (90, 13237), (126, 13393), (127, 13396), (128, 13399), (130, 13414), (131, 13417), (152, 13504), (161, 13528), (164, 13540), (173, 13567), (189, 13624), (202, 13660), (217, 13717), (234, 13792), (238, 13834), (241, 13840), (251, 13867), (252, 13879), (255, 13906), (282, 14056), (287, 14062), (296, 14092), (302, 14119), (309, 14146), (312, 14155), (320, 14188), (324, 14218), (326, 14224),

Gene: LiSara_66 Start: 41766, Stop: 42935, Start Num: 25

Candidate Starts for LiSara_66:

(Start: 25 @41766 has 110 MA's), (27, 41775), (30, 41787), (35, 41814), (51, 41871), (54, 41877), (79, 41976), (85, 41994), (88, 42006), (93, 42027), (128, 42120), (133, 42144), (138, 42168), (144, 42189), (171, 42282), (173, 42285), (175, 42291), (178, 42297), (182, 42309), (185, 42330), (202, 42378), (211, 42417), (223, 42462), (242, 42555), (247, 42561), (256, 42612), (280, 42744), (282, 42756), (312, 42855), (320, 42888),

Gene: LilyBell_20 Start: 15641, Stop: 16942, Start Num: 25

Candidate Starts for LilyBell_20:

(Start: 25 @15641 has 110 MA's), (29, 15659), (64, 15800), (118, 16010), (127, 16052), (136, 16088), (154, 16157), (178, 16229), (183, 16244), (188, 16271), (202, 16310), (207, 16328), (215, 16358), (216, 16361), (220, 16370), (232, 16433), (261, 16571), (272, 16631), (274, 16643), (299, 16739), (310, 16781), (314, 16793), (327, 16889),

Gene: LittleRon_20 Start: 15499, Stop: 16800, Start Num: 25

Candidate Starts for LittleRon_20:

(Start: 25 @15499 has 110 MA's), (29, 15517), (64, 15658), (78, 15715), (85, 15736), (127, 15910), (135, 15943), (136, 15946), (183, 16102), (202, 16168), (207, 16186), (215, 16216), (216, 16219), (232, 16291), (272, 16489), (274, 16501), (299, 16597), (310, 16639), (314, 16651), (327, 16747),

Gene: LittleTokyo_18 Start: 13345, Stop: 14595, Start Num: 25

Candidate Starts for LittleTokyo_18:

(Start: 25 @13345 has 110 MA's), (49, 13438), (52, 13453), (64, 13504), (66, 13513), (85, 13582), (89, 13597), (122, 13735), (126, 13756), (127, 13759), (128, 13762), (131, 13780), (133, 13786), (152, 13867), (164, 13903), (171, 13924), (173, 13927), (178, 13939), (182, 13951), (188, 13981), (189, 13984), (202, 14020), (279, 14401), (282, 14419), (287, 14425), (290, 14440), (302, 14482), (309, 14509), (312, 14518), (313, 14521), (322, 14572),

Gene: Lunar_19 Start: 13377, Stop: 14630, Start Num: 25

Candidate Starts for Lunar_19:

(Start: 25 @13377 has 110 MA's), (26, 13380), (31, 13401), (49, 13470), (64, 13536), (66, 13545), (90, 13632), (93, 13647), (127, 13791), (128, 13794), (130, 13809), (131, 13812), (133, 13818), (161, 13923), (164, 13935), (178, 13974), (189, 14019), (202, 14055), (212, 14097), (217, 14112), (235, 14190), (246, 14253), (252, 14277), (282, 14454), (296, 14490), (299, 14508), (302, 14517), (309, 14544), (312, 14553), (320, 14586),

Gene: MUWow_20 Start: 15716, Stop: 17017, Start Num: 25

Candidate Starts for MUWow_20:

(Start: 25 @15716 has 110 MA's), (85, 15953), (92, 15977), (99, 16004), (110, 16055), (118, 16085), (127, 16127), (136, 16163), (139, 16181), (165, 16271), (188, 16346), (202, 16385), (207, 16403), (216, 16436), (232, 16508), (272, 16706), (274, 16718), (276, 16727), (295, 16793), (310, 16856), (314, 16868), (319, 16889), (321, 16901), (327, 16964),

Gene: Madraxi_27 Start: 25619, Stop: 26752, Start Num: 38

Candidate Starts for Madraxi_27:

(Start: 38 @25619 has 5 MA's), (55, 25682), (56, 25688), (64, 25721), (65, 25724), (90, 25811), (108, 25874), (111, 25895), (116, 25916), (138, 26012), (139, 26015), (168, 26126), (174, 26138), (204, 26249), (223, 26327), (260, 26510), (263, 26537), (279, 26612), (281, 26627), (290, 26651),

Gene: Mapleville_20 Start: 15622, Stop: 16923, Start Num: 25

Candidate Starts for Mapleville_20:

(Start: 25 @15622 has 110 MA's), (92, 15883), (118, 15991), (127, 16033), (136, 16069), (139, 16087), (165, 16177), (188, 16252), (202, 16291), (207, 16309), (216, 16342), (232, 16414), (272, 16612), (274, 16624), (276, 16633), (279, 16648), (310, 16762), (314, 16774), (319, 16795), (321, 16807), (327, 16870),

Gene: MaterMagnus_21 Start: 15624, Stop: 16925, Start Num: 25

Candidate Starts for MaterMagnus_21:

(Start: 25 @15624 has 110 MA's), (92, 15885), (118, 15993), (127, 16035), (136, 16071), (139, 16089), (165, 16179), (188, 16254), (202, 16293), (207, 16311), (216, 16344), (232, 16416), (272, 16614), (274, 16626), (276, 16635), (295, 16701), (310, 16764), (314, 16776), (319, 16797), (321, 16809), (327, 16872),

Gene: Melons_19 Start: 13377, Stop: 14630, Start Num: 25

Candidate Starts for Melons_19:

(Start: 25 @13377 has 110 MA's), (26, 13380), (31, 13401), (49, 13470), (64, 13536), (66, 13545), (90, 13632), (93, 13647), (127, 13791), (128, 13794), (130, 13809), (131, 13812), (133, 13818), (161, 13923), (164, 13935), (178, 13974), (189, 14019), (202, 14055), (212, 14097), (217, 14112), (235, 14190), (246, 14253), (252, 14277), (282, 14454), (296, 14490), (299, 14508), (302, 14517), (309, 14544), (312, 14553), (320, 14586),

Gene: MidnightRain_21 Start: 15622, Stop: 16923, Start Num: 25

Candidate Starts for MidnightRain_21:

(Start: 25 @15622 has 110 MA's), (75, 15826), (85, 15859), (92, 15883), (105, 15931), (110, 15961), (118, 15991), (127, 16033), (136, 16069), (139, 16087), (165, 16177), (188, 16252), (202, 16291), (207, 16309), (216, 16342), (232, 16414), (272, 16612), (274, 16624), (310, 16762), (314, 16774), (319, 16795), (321, 16807), (327, 16870),

Gene: MurphyJoseph_21 Start: 15707, Stop: 17008, Start Num: 25

Candidate Starts for MurphyJoseph_21:

(Start: 25 @15707 has 110 MA's), (29, 15725), (32, 15740), (52, 15815), (64, 15866), (85, 15944), (105, 16016), (127, 16118), (131, 16139), (136, 16154), (160, 16241), (166, 16265), (178, 16295), (183, 16310), (188, 16337), (202, 16376), (207, 16394), (209, 16409), (216, 16427), (232, 16499), (234, 16505), (255, 16601), (272, 16697), (299, 16805), (310, 16847), (314, 16859), (327, 16955),

Gene: Nesbitt_18 Start: 15235, Stop: 16353, Start Num: 39

Candidate Starts for Nesbitt_18:

(19, 15058), (Start: 37 @15232 has 2 MA's), (Start: 39 @15235 has 2 MA's), (61, 15319), (69, 15358), (72, 15364), (105, 15475), (119, 15535), (206, 15847), (207, 15850), (211, 15871), (212, 15874), (216, 15886), (218, 15895), (223, 15919), (231, 15955), (235, 15973), (239, 16009), (257, 16087), (260, 16102), (261, 16111), (313, 16324),

Gene: NewKitty_22 Start: 15853, Stop: 17154, Start Num: 25

Candidate Starts for NewKitty_22:

(Start: 25 @15853 has 110 MA's), (75, 16057), (85, 16090), (92, 16114), (105, 16162), (110, 16192), (118, 16222), (127, 16264), (136, 16300), (139, 16318), (152, 16366), (188, 16483), (202, 16522), (207, 16540), (216, 16573), (232, 16645), (272, 16843), (274, 16855), (276, 16864), (310, 16993), (314, 17005), (319, 17026), (321, 17038), (327, 17101),

Gene: Niblet_18 Start: 14417, Stop: 15667, Start Num: 25

Candidate Starts for Niblet_18:

(Start: 25 @14417 has 110 MA's), (32, 14450), (41, 14483), (52, 14525), (66, 14585), (69, 14600), (88, 14666), (127, 14828), (128, 14831), (164, 14972), (178, 15011), (180, 15017), (189, 15056), (202, 15092), (229, 15200), (246, 15290), (252, 15314), (262, 15386), (264, 15401), (272, 15437), (282,

15491), (287, 15497), (289, 15509), (302, 15554), (305, 15560), (309, 15581), (312, 15590),

Gene: NidoQ_20 Start: 15681, Stop: 16982, Start Num: 25

Candidate Starts for NidoQ_20:

(Start: 25 @15681 has 110 MA's), (29, 15699), (64, 15840), (118, 16050), (127, 16092), (136, 16128), (154, 16197), (178, 16269), (183, 16284), (188, 16311), (202, 16350), (207, 16368), (215, 16398), (216, 16401), (220, 16410), (232, 16473), (261, 16611), (272, 16671), (274, 16683), (299, 16779), (310, 16821), (314, 16833), (327, 16929),

Gene: NikkiHotWheels_20 Start: 15642, Stop: 16943, Start Num: 25

Candidate Starts for NikkiHotWheels_20:

(Start: 25 @15642 has 110 MA's), (29, 15660), (64, 15801), (118, 16011), (127, 16053), (131, 16074), (136, 16089), (178, 16230), (183, 16245), (188, 16272), (202, 16311), (207, 16329), (216, 16362), (232, 16434), (261, 16572), (272, 16632), (274, 16644), (299, 16740), (310, 16782), (314, 16794), (327, 16890),

Gene: Nyilah_20 Start: 15613, Stop: 16914, Start Num: 25

Candidate Starts for Nyilah_20:

(Start: 25 @15613 has 110 MA's), (64, 15772), (75, 15817), (92, 15874), (118, 15982), (127, 16024), (136, 16060), (139, 16078), (165, 16168), (188, 16243), (202, 16282), (207, 16300), (216, 16333), (232, 16405), (272, 16603), (276, 16624), (279, 16639), (310, 16753), (314, 16765), (319, 16786), (321, 16798), (327, 16861),

Gene: Oppalora_17 Start: 12929, Stop: 14173, Start Num: 25

Candidate Starts for Oppalora_17:

(Start: 25 @12929 has 110 MA's), (49, 13022), (54, 13043), (64, 13088), (69, 13112), (90, 13184), (93, 13199), (126, 13340), (127, 13343), (128, 13346), (130, 13361), (131, 13364), (133, 13370), (152, 13451), (161, 13475), (164, 13487), (173, 13514), (189, 13571), (202, 13607), (212, 13649), (217, 13664), (234, 13739), (238, 13781), (241, 13787), (251, 13814), (252, 13826), (255, 13853), (282, 14003), (287, 14009), (296, 14039), (302, 14066), (309, 14093), (312, 14102), (320, 14135), (324, 14165),

Gene: Orcanus_18 Start: 14331, Stop: 15581, Start Num: 25

Candidate Starts for Orcanus_18:

(Start: 25 @14331 has 110 MA's), (41, 14397), (52, 14439), (67, 14502), (78, 14547), (88, 14580), (127, 14742), (128, 14745), (147, 14832), (158, 14865), (164, 14886), (173, 14913), (178, 14925), (180, 14931), (189, 14970), (202, 15006), (215, 15054), (231, 15123), (246, 15204), (252, 15228), (272, 15351), (276, 15372), (282, 15405), (287, 15411), (290, 15426), (297, 15447), (300, 15462), (302, 15468), (305, 15474), (309, 15495), (312, 15504), (320, 15537),

Gene: OtsoOtso_18 Start: 13219, Stop: 14472, Start Num: 25

Candidate Starts for OtsoOtso_18:

(Start: 25 @13219 has 110 MA's), (26, 13222), (31, 13243), (49, 13312), (64, 13378), (66, 13387), (90, 13474), (93, 13489), (127, 13633), (128, 13636), (130, 13651), (131, 13654), (133, 13660), (161, 13765), (164, 13777), (178, 13816), (189, 13861), (202, 13897), (212, 13939), (217, 13954), (235, 14032), (246, 14095), (252, 14119), (253, 14125), (282, 14296), (296, 14332), (299, 14350), (302, 14359), (309, 14386), (312, 14395), (320, 14428),

Gene: Ottawa_45 Start: 24004, Stop: 25179, Start Num: 25

Candidate Starts for Ottawa_45:

(1, 23296), (8, 23740), (13, 23827), (Start: 25 @24004 has 110 MA's), (30, 24025), (33, 24040), (65, 24154), (79, 24211), (85, 24229), (93, 24262), (126, 24349), (138, 24403), (140, 24409), (164, 24493), (166, 24502), (185, 24571), (188, 24580), (191, 24592), (194, 24601), (221, 24694), (223, 24703),

(237, 24781), (238, 24787), (272, 24943), (274, 24955), (282, 24997), (288, 25006), (312, 25096), (318, 25120),

Gene: PFR1_15 Start: 13778, Stop: 14950, Start Num: 46

Candidate Starts for PFR1_15:

(46, 13778), (48, 13787), (54, 13811), (59, 13835), (60, 13838), (61, 13841), (69, 13880), (71, 13883), (82, 13925), (86, 13937), (105, 14000), (123, 14072), (133, 14120), (135, 14126), (143, 14156), (148, 14186), (156, 14207), (163, 14231), (181, 14297), (182, 14300), (197, 14360), (198, 14363), (200, 14375), (206, 14396), (208, 14405), (212, 14423), (216, 14438), (223, 14471), (226, 14483), (233, 14519), (243, 14570), (245, 14576), (254, 14621), (262, 14690), (271, 14732), (281, 14789), (284, 14798), (293, 14825), (300, 14855), (305, 14867), (315, 14906),

Gene: PFR2_17 Start: 15347, Stop: 16519, Start Num: 46

Candidate Starts for PFR2_17:

(46, 15347), (48, 15356), (54, 15380), (59, 15404), (60, 15407), (61, 15410), (69, 15449), (71, 15452), (82, 15494), (86, 15506), (105, 15569), (123, 15641), (133, 15689), (135, 15695), (143, 15725), (148, 15755), (156, 15776), (163, 15800), (181, 15866), (182, 15869), (197, 15929), (198, 15932), (200, 15944), (206, 15965), (208, 15974), (212, 15992), (216, 16007), (223, 16040), (226, 16052), (233, 16088), (243, 16139), (245, 16145), (254, 16190), (262, 16259), (271, 16301), (281, 16358), (284, 16367), (293, 16394), (300, 16424), (305, 16436), (315, 16475),

Gene: Peas_20 Start: 15628, Stop: 16929, Start Num: 25

Candidate Starts for Peas_20:

(Start: 25 @15628 has 110 MA's), (29, 15646), (40, 15688), (64, 15787), (118, 15997), (127, 16039), (136, 16075), (178, 16216), (183, 16231), (188, 16258), (190, 16267), (202, 16297), (207, 16315), (216, 16348), (232, 16420), (261, 16558), (272, 16618), (274, 16630), (299, 16726), (310, 16768), (314, 16780), (327, 16876),

Gene: PeggyLeg03_20 Start: 15667, Stop: 16968, Start Num: 25

Candidate Starts for PeggyLeg03_20:

(Start: 25 @15667 has 110 MA's), (29, 15685), (64, 15826), (118, 16036), (127, 16078), (136, 16114), (154, 16183), (178, 16255), (183, 16270), (188, 16297), (202, 16336), (207, 16354), (215, 16384), (216, 16387), (220, 16396), (232, 16459), (261, 16597), (272, 16657), (274, 16669), (299, 16765), (310, 16807), (314, 16819), (327, 16915),

Gene: Pelletreau_19 Start: 14537, Stop: 15787, Start Num: 25

Candidate Starts for Pelletreau_19:

(Start: 25 @14537 has 110 MA's), (41, 14603), (52, 14645), (67, 14708), (78, 14753), (88, 14786), (127, 14948), (128, 14951), (158, 15071), (164, 15092), (173, 15119), (178, 15131), (180, 15137), (189, 15176), (202, 15212), (215, 15260), (246, 15410), (252, 15434), (272, 15557), (274, 15569), (276, 15578), (282, 15611), (287, 15617), (290, 15632), (297, 15653), (300, 15668), (302, 15674), (305, 15680), (309, 15701), (312, 15710), (320, 15743),

Gene: Persistence_20 Start: 15544, Stop: 16845, Start Num: 25

Candidate Starts for Persistence_20:

(Start: 25 @15544 has 110 MA's), (64, 15703), (93, 15814), (99, 15832), (105, 15853), (118, 15913), (127, 15955), (128, 15958), (139, 16009), (152, 16057), (165, 16099), (171, 16117), (178, 16132), (182, 16144), (183, 16147), (202, 16213), (207, 16231), (209, 16246), (216, 16264), (232, 16336), (253, 16417), (255, 16438), (276, 16555), (299, 16642), (310, 16684), (327, 16792),

Gene: PhirstandPhine_19 Start: 13377, Stop: 14630, Start Num: 25

Candidate Starts for PhirstandPhine_19:

(Start: 25 @13377 has 110 MA's), (26, 13380), (31, 13401), (49, 13470), (64, 13536), (66, 13545), (90, 13632), (93, 13647), (127, 13791), (128, 13794), (130, 13809), (131, 13812), (133, 13818), (161, 13923), (164, 13935), (178, 13974), (189, 14019), (202, 14055), (212, 14097), (217, 14112), (235, 14190), (246, 14253), (252, 14277), (282, 14454), (296, 14490), (299, 14508), (302, 14517), (309, 14544), (312, 14553), (320, 14586),

Gene: PhluffyCoco_17 Start: 12931, Stop: 14175, Start Num: 25

Candidate Starts for PhluffyCoco_17:

(Start: 25 @12931 has 110 MA's), (49, 13024), (54, 13045), (64, 13090), (69, 13114), (90, 13186), (126, 13342), (127, 13345), (128, 13348), (130, 13363), (131, 13366), (133, 13372), (152, 13453), (164, 13489), (173, 13516), (189, 13573), (202, 13609), (212, 13651), (217, 13666), (234, 13741), (238, 13783), (241, 13789), (251, 13816), (252, 13828), (255, 13855), (282, 14005), (287, 14011), (296, 14041), (302, 14068), (309, 14095), (312, 14104), (320, 14137), (324, 14167),

Gene: Phrank15_20 Start: 15557, Stop: 16858, Start Num: 25

Candidate Starts for Phrank15_20:

(Start: 25 @15557 has 110 MA's), (92, 15818), (118, 15926), (127, 15968), (136, 16004), (139, 16022), (165, 16112), (188, 16187), (191, 16199), (202, 16226), (207, 16244), (216, 16277), (232, 16349), (272, 16547), (274, 16559), (276, 16568), (279, 16583), (310, 16697), (314, 16709), (319, 16730), (321, 16742), (327, 16805),

Gene: Pineda_19 Start: 13377, Stop: 14630, Start Num: 25

Candidate Starts for Pineda_19:

(Start: 25 @13377 has 110 MA's), (26, 13380), (31, 13401), (49, 13470), (64, 13536), (66, 13545), (90, 13632), (93, 13647), (127, 13791), (128, 13794), (130, 13809), (131, 13812), (133, 13818), (161, 13923), (164, 13935), (178, 13974), (189, 14019), (202, 14055), (212, 14097), (217, 14112), (235, 14190), (246, 14253), (252, 14277), (282, 14454), (296, 14490), (299, 14508), (302, 14517), (309, 14544), (312, 14553), (320, 14586),

Gene: Polka_18 Start: 13219, Stop: 14472, Start Num: 25

Candidate Starts for Polka_18:

(Start: 25 @13219 has 110 MA's), (26, 13222), (31, 13243), (49, 13312), (64, 13378), (66, 13387), (90, 13474), (93, 13489), (127, 13633), (128, 13636), (130, 13651), (131, 13654), (133, 13660), (161, 13765), (164, 13777), (178, 13816), (189, 13861), (202, 13897), (212, 13939), (217, 13954), (235, 14032), (246, 14095), (252, 14119), (253, 14125), (282, 14296), (296, 14332), (299, 14350), (302, 14359), (309, 14386), (312, 14395), (320, 14428),

Gene: Pucara_20 Start: 15628, Stop: 16929, Start Num: 25

Candidate Starts for Pucara_20:

(Start: 25 @15628 has 110 MA's), (29, 15646), (64, 15787), (118, 15997), (127, 16039), (136, 16075), (178, 16216), (183, 16231), (188, 16258), (190, 16267), (202, 16297), (207, 16315), (216, 16348), (232, 16420), (261, 16558), (272, 16618), (274, 16630), (299, 16726), (310, 16768), (314, 16780), (327, 16876),

Gene: REQ1_80 Start: 46988, Stop: 48121, Start Num: 38

Candidate Starts for REQ1_80:

(Start: 38 @46988 has 5 MA's), (55, 47051), (56, 47057), (65, 47093), (90, 47180), (108, 47243), (111, 47264), (116, 47285), (135, 47363), (138, 47381), (139, 47384), (168, 47495), (187, 47555), (204, 47618), (223, 47696), (239, 47786), (255, 47852), (257, 47864), (260, 47879), (263, 47906), (279, 47981), (290, 48020),

Gene: RadFad_21 Start: 15623, Stop: 16924, Start Num: 25

Candidate Starts for RadFad_21:

(Start: 25 @15623 has 110 MA's), (85, 15860), (92, 15884), (99, 15911), (110, 15962), (118, 15992), (127, 16034), (131, 16055), (136, 16070), (139, 16088), (188, 16253), (202, 16292), (207, 16310), (216, 16343), (232, 16415), (272, 16613), (274, 16625), (276, 16634), (279, 16649), (310, 16763), (314, 16775), (319, 16796), (321, 16808), (327, 16871),

Gene: Raphaella_21 Start: 15623, Stop: 16924, Start Num: 25

Candidate Starts for Raphaella_21:

(Start: 25 @15623 has 110 MA's), (85, 15860), (92, 15884), (99, 15911), (110, 15962), (118, 15992), (127, 16034), (131, 16055), (136, 16070), (139, 16088), (188, 16253), (202, 16292), (207, 16310), (216, 16343), (232, 16415), (272, 16613), (274, 16625), (276, 16634), (279, 16649), (310, 16763), (314, 16775), (319, 16796), (321, 16808), (327, 16871),

Gene: Rattail_17 Start: 12982, Stop: 14229, Start Num: 25

Candidate Starts for Rattail_17:

(Start: 25 @12982 has 110 MA's), (49, 13075), (54, 13096), (64, 13141), (69, 13165), (90, 13237), (126, 13393), (127, 13396), (128, 13399), (130, 13414), (131, 13417), (152, 13504), (161, 13528), (164, 13540), (173, 13567), (189, 13624), (202, 13660), (217, 13717), (234, 13792), (238, 13834), (241, 13840), (251, 13867), (252, 13879), (255, 13906), (282, 14056), (287, 14062), (296, 14092), (302, 14119), (309, 14146), (312, 14155), (320, 14188), (324, 14218), (326, 14224),

Gene: RedFox_17 Start: 12931, Stop: 14175, Start Num: 25

Candidate Starts for RedFox_17:

(Start: 25 @12931 has 110 MA's), (49, 13024), (54, 13045), (64, 13090), (69, 13114), (90, 13186), (126, 13342), (127, 13345), (128, 13348), (130, 13363), (131, 13366), (133, 13372), (152, 13453), (161, 13477), (164, 13489), (173, 13516), (189, 13573), (202, 13609), (212, 13651), (217, 13666), (234, 13741), (238, 13783), (241, 13789), (251, 13816), (252, 13828), (255, 13855), (282, 14005), (287, 14011), (296, 14041), (302, 14068), (309, 14095), (312, 14104), (320, 14137), (324, 14167),

Gene: RegnumDei_22 Start: 21738, Stop: 22865, Start Num: 38

Candidate Starts for RegnumDei_22:

(Start: 38 @21738 has 5 MA's), (55, 21801), (64, 21840), (72, 21864), (90, 21930), (108, 21993), (114, 22023), (116, 22035), (129, 22092), (133, 22104), (139, 22131), (187, 22302), (188, 22308), (201, 22353), (204, 22365), (205, 22368), (223, 22443), (235, 22497), (239, 22533), (249, 22554), (255, 22599), (260, 22626), (261, 22635), (263, 22653), (268, 22677), (274, 22704), (282, 22746), (287, 22752), (288, 22755), (290, 22767), (293, 22773), (298, 22791), (309, 22836), (317, 22860),

Gene: Renna12_18 Start: 13275, Stop: 14519, Start Num: 25

Candidate Starts for Renna12_18:

(Start: 25 @13275 has 110 MA's), (49, 13368), (54, 13389), (64, 13434), (90, 13530), (93, 13545), (126, 13686), (127, 13689), (128, 13692), (130, 13707), (131, 13710), (133, 13716), (152, 13797), (161, 13821), (164, 13833), (173, 13860), (189, 13917), (202, 13953), (212, 13995), (217, 14010), (232, 14079), (234, 14085), (238, 14127), (241, 14133), (251, 14160), (252, 14172), (255, 14199), (282, 14349), (287, 14355), (296, 14385), (302, 14412), (309, 14439), (312, 14448), (320, 14481), (324, 14511),

Gene: Richie_21 Start: 15638, Stop: 16939, Start Num: 25

Candidate Starts for Richie_21:

(Start: 25 @15638 has 110 MA's), (75, 15842), (85, 15875), (92, 15899), (105, 15947), (110, 15977), (118, 16007), (127, 16049), (136, 16085), (139, 16103), (188, 16268), (202, 16307), (207, 16325), (216, 16358), (232, 16430), (272, 16628), (274, 16640), (310, 16778), (314, 16790), (319, 16811), (321, 16823), (327, 16886),

Gene: Rowa_18 Start: 15046, Stop: 16164, Start Num: 37

Candidate Starts for Rowa_18:

(Start: 37 @15046 has 2 MA's), (54, 15103), (55, 15109), (72, 15175), (92, 15241), (114, 15328), (116, 15340), (213, 15691), (218, 15709), (222, 15730), (223, 15733), (227, 15748), (233, 15781), (260, 15916), (273, 15988), (276, 16003), (287, 16042), (298, 16081), (307, 16108), (313, 16138),

Gene: Ruchi_18 Start: 14614, Stop: 15864, Start Num: 25

Candidate Starts for Ruchi_18:

(Start: 25 @14614 has 110 MA's), (32, 14647), (41, 14680), (57, 14743), (64, 14773), (88, 14863), (99, 14902), (113, 14962), (120, 14986), (122, 15001), (127, 15025), (128, 15028), (131, 15046), (152, 15133), (161, 15157), (164, 15169), (189, 15253), (202, 15289), (215, 15337), (235, 15424), (246, 15487), (252, 15511), (260, 15565), (262, 15583), (279, 15670), (282, 15688), (296, 15724), (300, 15745), (302, 15751), (309, 15778), (312, 15787),

Gene: SFuller_24 Start: 23845, Stop: 24978, Start Num: 38

Candidate Starts for SFuller_24:

(Start: 38 @23845 has 5 MA's), (55, 23908), (56, 23914), (64, 23947), (65, 23950), (90, 24037), (108, 24100), (111, 24121), (116, 24142), (138, 24238), (139, 24241), (168, 24352), (187, 24412), (223, 24553), (239, 24643), (255, 24709), (263, 24763), (279, 24838), (281, 24853), (290, 24877),

Gene: SPB78_18 Start: 14539, Stop: 15684, Start Num: 99

Candidate Starts for SPB78_18:

(2, 13717), (3, 13744), (6, 13882), (12, 14044), (16, 14098), (58, 14380), (74, 14440), (99, 14539), (100, 14542), (105, 14560), (124, 14662), (141, 14740), (160, 14809), (177, 14866), (182, 14890), (206, 14992), (214, 15028), (251, 15193), (258, 15259), (260, 15271), (267, 15322), (277, 15370), (286, 15412), (309, 15508), (325, 15592), (328, 15646),

Gene: Sakai_21 Start: 15632, Stop: 16933, Start Num: 25

Candidate Starts for Sakai_21:

(Start: 25 @15632 has 110 MA's), (92, 15893), (99, 15920), (110, 15971), (118, 16001), (127, 16043), (131, 16064), (136, 16079), (139, 16097), (188, 16262), (202, 16301), (207, 16319), (216, 16352), (232, 16424), (272, 16622), (274, 16634), (276, 16643), (279, 16658), (310, 16772), (314, 16784), (319, 16805), (321, 16817), (327, 16880),

Gene: Salgado_69 Start: 41420, Stop: 42589, Start Num: 25

Candidate Starts for Salgado_69:

(Start: 25 @41420 has 110 MA's), (27, 41429), (30, 41441), (35, 41468), (51, 41525), (54, 41531), (79, 41630), (85, 41648), (88, 41660), (93, 41681), (128, 41774), (133, 41798), (138, 41822), (144, 41843), (171, 41936), (175, 41945), (178, 41951), (182, 41963), (185, 41984), (202, 42032), (211, 42071), (223, 42116), (242, 42209), (247, 42215), (256, 42266), (280, 42398), (282, 42410), (312, 42509), (320, 42542),

Gene: Samy_23 Start: 18462, Stop: 19574, Start Num: 37

Candidate Starts for Samy_23:

(Start: 37 @18462 has 2 MA's), (52, 18513), (62, 18552), (105, 18702), (131, 18807), (136, 18822), (149, 18876), (157, 18897), (168, 18945), (179, 18978), (194, 19038), (228, 19170), (255, 19305), (279, 19434), (298, 19491), (309, 19536),

Gene: Satrap_21 Start: 15544, Stop: 16845, Start Num: 25

Candidate Starts for Satrap_21:

(Start: 25 @15544 has 110 MA's), (48, 15634), (52, 15652), (64, 15703), (68, 15721), (85, 15781), (99, 15832), (113, 15892), (118, 15913), (126, 15952), (127, 15955), (131, 15976), (133, 15982), (136, 15991), (150, 16054), (165, 16099), (178, 16132), (183, 16147), (190, 16183), (202, 16213), (207, 16231), (209, 16246), (216, 16264), (231, 16327), (232, 16336), (255, 16438), (276, 16555), (289,

16606), (299, 16642), (310, 16684), (327, 16792),

Gene: Seahorse_22 Start: 15990, Stop: 17291, Start Num: 25

Candidate Starts for Seahorse_22:

(Start: 25 @15990 has 110 MA's), (29, 16008), (32, 16023), (92, 16251), (118, 16359), (127, 16401), (136, 16437), (139, 16455), (165, 16545), (188, 16620), (202, 16659), (207, 16677), (216, 16710), (232, 16782), (272, 16980), (310, 17130), (314, 17142), (319, 17163), (321, 17175), (327, 17238),

Gene: Shagrat_23 Start: 22765, Stop: 23892, Start Num: 38

Candidate Starts for Shagrat_23:

(Start: 38 @22765 has 5 MA's), (55, 22828), (64, 22867), (72, 22891), (90, 22957), (108, 23020), (116, 23062), (133, 23131), (155, 23215), (187, 23329), (188, 23335), (194, 23356), (201, 23380), (204, 23392), (219, 23449), (223, 23470), (235, 23524), (239, 23560), (249, 23581), (255, 23626), (260, 23653), (263, 23680), (268, 23704), (274, 23731), (281, 23770), (282, 23773), (288, 23782), (290, 23794), (293, 23800), (298, 23818), (317, 23887),

Gene: Shen_19 Start: 14538, Stop: 15788, Start Num: 25

Candidate Starts for Shen_19:

(Start: 25 @14538 has 110 MA's), (41, 14604), (52, 14646), (67, 14709), (78, 14754), (88, 14787), (127, 14949), (128, 14952), (133, 14976), (158, 15072), (164, 15093), (173, 15120), (178, 15132), (180, 15138), (189, 15177), (202, 15213), (215, 15261), (246, 15411), (252, 15435), (272, 15558), (274, 15570), (276, 15579), (282, 15612), (287, 15618), (290, 15633), (297, 15654), (300, 15669), (302, 15675), (305, 15681), (309, 15702), (312, 15711), (320, 15744),

Gene: Shrooms_67 Start: 39941, Stop: 41110, Start Num: 25

Candidate Starts for Shrooms_67:

(Start: 25 @39941 has 110 MA's), (27, 39950), (30, 39962), (51, 40046), (57, 40067), (64, 40091), (68, 40109), (69, 40115), (79, 40151), (85, 40169), (88, 40181), (93, 40202), (98, 40217), (103, 40229), (128, 40295), (144, 40364), (173, 40460), (178, 40472), (182, 40484), (185, 40505), (191, 40526), (194, 40535), (202, 40553), (211, 40592), (236, 40703), (242, 40730), (247, 40736), (256, 40787), (280, 40919), (282, 40931), (299, 40985), (302, 40994), (309, 41021), (312, 41030), (320, 41063),

Gene: Shukran_21 Start: 15544, Stop: 16845, Start Num: 25

Candidate Starts for Shukran_21:

(Start: 25 @15544 has 110 MA's), (48, 15634), (52, 15652), (64, 15703), (68, 15721), (85, 15781), (99, 15832), (113, 15892), (118, 15913), (126, 15952), (127, 15955), (131, 15976), (133, 15982), (136, 15991), (150, 16054), (165, 16099), (178, 16132), (183, 16147), (190, 16183), (202, 16213), (207, 16231), (209, 16246), (216, 16264), (231, 16327), (232, 16336), (255, 16438), (276, 16555), (289, 16606), (299, 16642), (310, 16684), (327, 16792),

Gene: SonDevVon_20 Start: 15625, Stop: 16926, Start Num: 25

Candidate Starts for SonDevVon_20:

(Start: 25 @15625 has 110 MA's), (75, 15829), (85, 15862), (92, 15886), (105, 15934), (110, 15964), (118, 15994), (127, 16036), (136, 16072), (139, 16090), (188, 16255), (190, 16264), (202, 16294), (207, 16312), (216, 16345), (232, 16417), (272, 16615), (274, 16627), (310, 16765), (314, 16777), (319, 16798), (321, 16810), (327, 16873),

Gene: SpicyFrank_21 Start: 15700, Stop: 17001, Start Num: 25

Candidate Starts for SpicyFrank_21:

(Start: 25 @15700 has 110 MA's), (92, 15961), (118, 16069), (127, 16111), (136, 16147), (157, 16225), (202, 16369), (207, 16387), (231, 16483), (232, 16492), (261, 16630), (272, 16690), (276, 16711), (310, 16840), (314, 16852), (327, 16948),

Gene: Sporco_22 Start: 15680, Stop: 16981, Start Num: 25

Candidate Starts for Sporco_22:

(Start: 25 @15680 has 110 MA's), (85, 15917), (92, 15941), (99, 15968), (110, 16019), (118, 16049), (127, 16091), (131, 16112), (136, 16127), (139, 16145), (188, 16310), (202, 16349), (207, 16367), (216, 16400), (232, 16472), (272, 16670), (274, 16682), (276, 16691), (279, 16706), (310, 16820), (314, 16832), (319, 16853), (321, 16865), (327, 16928),

Gene: StuartMinion_17 Start: 12969, Stop: 14216, Start Num: 25

Candidate Starts for StuartMinion_17:

(Start: 25 @12969 has 110 MA's), (49, 13062), (54, 13083), (64, 13128), (69, 13152), (90, 13224), (93, 13239), (126, 13380), (127, 13383), (128, 13386), (130, 13401), (131, 13404), (133, 13410), (152, 13491), (165, 13533), (173, 13554), (189, 13611), (202, 13647), (212, 13689), (215, 13695), (217, 13704), (232, 13773), (234, 13779), (241, 13827), (251, 13854), (252, 13866), (253, 13872), (255, 13893), (282, 14043), (287, 14049), (296, 14079), (302, 14106), (309, 14133), (312, 14142), (320, 14175),

Gene: TaylorSipt_18 Start: 13348, Stop: 14598, Start Num: 25

Candidate Starts for TaylorSipt_18:

(Start: 25 @13348 has 110 MA's), (32, 13381), (41, 13414), (49, 13441), (67, 13519), (88, 13597), (113, 13696), (127, 13759), (128, 13762), (131, 13780), (147, 13849), (158, 13882), (164, 13903), (171, 13927), (173, 13930), (178, 13942), (180, 13948), (189, 13987), (202, 14023), (215, 14071), (217, 14080), (229, 14131), (230, 14137), (246, 14221), (252, 14245), (272, 14368), (282, 14422), (285, 14425), (289, 14440), (297, 14464), (309, 14512), (312, 14521), (314, 14527),

Gene: ThayneTheZag_21 Start: 15791, Stop: 17092, Start Num: 25

Candidate Starts for ThayneTheZag_21:

(Start: 25 @15791 has 110 MA's), (29, 15809), (64, 15950), (126, 16199), (127, 16202), (131, 16223), (136, 16238), (166, 16349), (178, 16379), (183, 16394), (190, 16430), (202, 16460), (207, 16478), (209, 16493), (215, 16508), (216, 16511), (220, 16520), (232, 16583), (255, 16685), (299, 16889), (310, 16931), (314, 16943), (327, 17039),

Gene: Tiff81_22 Start: 15718, Stop: 17019, Start Num: 25

Candidate Starts for Tiff81_22:

(Start: 25 @15718 has 110 MA's), (32, 15751), (92, 15979), (118, 16087), (127, 16129), (136, 16165), (139, 16183), (165, 16273), (188, 16348), (202, 16387), (207, 16405), (216, 16438), (232, 16510), (272, 16708), (310, 16858), (314, 16870), (319, 16891), (321, 16903), (327, 16966),

Gene: Toad24_19 Start: 14538, Stop: 15788, Start Num: 25

Candidate Starts for Toad24_19:

(Start: 25 @14538 has 110 MA's), (41, 14604), (52, 14646), (67, 14709), (78, 14754), (88, 14787), (127, 14949), (128, 14952), (158, 15072), (164, 15093), (173, 15120), (178, 15132), (180, 15138), (189, 15177), (202, 15213), (215, 15261), (246, 15411), (252, 15435), (272, 15558), (274, 15570), (276, 15579), (282, 15612), (287, 15618), (290, 15633), (297, 15654), (300, 15669), (302, 15675), (305, 15681), (309, 15702), (312, 15711), (320, 15744),

Gene: VWB_19 Start: 16658, Stop: 17779, Start Num: 28

Candidate Starts for VWB_19:

(5, 16259), (7, 16361), (11, 16445), (18, 16520), (20, 16529), (24, 16628), (28, 16658), (36, 16688), (Start: 37 @16691 has 2 MA's), (53, 16745), (81, 16853), (95, 16901), (98, 16907), (108, 16940), (114, 16967), (130, 17027), (132, 17033), (153, 17105), (197, 17258), (205, 17285), (212, 17315), (222, 17354), (228, 17378), (231, 17393), (243, 17453), (270, 17594), (277, 17630), (298, 17696),

Gene: Vopal_22 Start: 15695, Stop: 16996, Start Num: 25

Candidate Starts for Vopal_22:

(Start: 25 @15695 has 110 MA's), (85, 15932), (92, 15956), (99, 15983), (110, 16034), (118, 16064), (127, 16106), (131, 16127), (136, 16142), (139, 16160), (188, 16325), (202, 16364), (207, 16382), (216, 16415), (232, 16487), (272, 16685), (274, 16697), (276, 16706), (279, 16721), (310, 16835), (314, 16847), (319, 16868), (321, 16880), (327, 16943),

Gene: Vulpecula_18 Start: 14072, Stop: 15322, Start Num: 25

Candidate Starts for Vulpecula_18:

(Start: 25 @14072 has 110 MA's), (32, 14105), (41, 14138), (57, 14201), (64, 14231), (67, 14243), (88, 14321), (99, 14360), (113, 14420), (120, 14444), (122, 14459), (127, 14483), (128, 14486), (131, 14504), (152, 14591), (161, 14615), (164, 14627), (189, 14711), (202, 14747), (215, 14795), (235, 14882), (246, 14945), (251, 14957), (252, 14969), (260, 15023), (262, 15041), (279, 15128), (282, 15146), (296, 15182), (300, 15203), (302, 15209), (309, 15236), (312, 15245), (320, 15278),

Gene: Waltz_66 Start: 39954, Stop: 41123, Start Num: 25

Candidate Starts for Waltz_66:

(Start: 25 @39954 has 110 MA's), (27, 39963), (30, 39975), (50, 40050), (68, 40122), (75, 40149), (79, 40164), (85, 40182), (88, 40194), (98, 40230), (101, 40236), (103, 40242), (128, 40308), (144, 40377), (173, 40473), (178, 40485), (182, 40497), (185, 40518), (191, 40539), (202, 40566), (247, 40749), (272, 40890), (274, 40902), (279, 40926), (282, 40944), (290, 40965), (299, 40998), (302, 41007), (309, 41034), (312, 41043), (314, 41049), (318, 41067), (320, 41076),

Gene: Westrich_19 Start: 14526, Stop: 15797, Start Num: 25

Candidate Starts for Westrich_19:

(Start: 25 @14526 has 110 MA's), (41, 14592), (52, 14634), (67, 14697), (78, 14742), (88, 14775), (127, 14937), (128, 14940), (158, 15060), (164, 15081), (173, 15108), (178, 15120), (180, 15126), (189, 15165), (202, 15201), (215, 15249), (246, 15399), (252, 15423), (272, 15546), (274, 15558), (276, 15567), (282, 15600), (287, 15606), (290, 15621), (297, 15642), (300, 15657), (302, 15663), (305, 15669), (309, 15690), (312, 15699), (320, 15732),

Gene: Wheelbite_65 Start: 41577, Stop: 42746, Start Num: 25

Candidate Starts for Wheelbite_65:

(Start: 25 @41577 has 110 MA's), (27, 41586), (30, 41598), (35, 41625), (51, 41682), (54, 41688), (65, 41730), (79, 41787), (85, 41805), (88, 41817), (128, 41931), (138, 41979), (144, 42000), (146, 42015), (161, 42057), (173, 42096), (178, 42108), (185, 42141), (202, 42189), (211, 42228), (223, 42273), (242, 42366), (269, 42498), (272, 42513), (280, 42555), (282, 42567), (312, 42666), (320, 42699),

Gene: WileyE_17 Start: 13406, Stop: 14656, Start Num: 25

Candidate Starts for WileyE_17:

(Start: 25 @13406 has 110 MA's), (32, 13439), (41, 13472), (57, 13535), (64, 13565), (88, 13655), (99, 13694), (113, 13754), (120, 13778), (122, 13793), (127, 13817), (128, 13820), (131, 13838), (152, 13925), (161, 13949), (164, 13961), (173, 13988), (189, 14045), (202, 14081), (215, 14129), (235, 14216), (246, 14279), (252, 14303), (260, 14357), (262, 14375), (279, 14462), (296, 14516), (300, 14537), (302, 14543), (305, 14549), (309, 14570), (312, 14579), (320, 14612),

Gene: Windest_22 Start: 15679, Stop: 16980, Start Num: 25

Candidate Starts for Windest_22:

(Start: 25 @15679 has 110 MA's), (75, 15883), (85, 15916), (92, 15940), (105, 15988), (110, 16018), (118, 16048), (127, 16090), (136, 16126), (139, 16144), (188, 16309), (202, 16348), (207, 16366), (216, 16399), (232, 16471), (272, 16669), (274, 16681), (310, 16819), (314, 16831), (319, 16852), (321, 16864), (327, 16927),

Gene: Wollypog_19 Start: 17989, Stop: 19074, Start Num: 47

Candidate Starts for Wollypog_19:

(Start: 47 @17989 has 1 MA's), (62, 18055), (73, 18097), (77, 18118), (99, 18193), (104, 18208), (145, 18373), (152, 18391), (167, 18439), (183, 18481), (196, 18538), (199, 18541), (203, 18556), (218, 18616), (234, 18691), (235, 18694), (243, 18736), (246, 18745), (279, 18922),

Gene: YoungHarleezy_21 Start: 15636, Stop: 16937, Start Num: 25

Candidate Starts for YoungHarleezy_21:

(Start: 25 @15636 has 110 MA's), (85, 15873), (92, 15897), (99, 15924), (110, 15975), (118, 16005), (127, 16047), (131, 16068), (136, 16083), (139, 16101), (188, 16266), (202, 16305), (207, 16323), (216, 16356), (232, 16428), (272, 16626), (274, 16638), (276, 16647), (279, 16662), (310, 16776), (314, 16788), (319, 16809), (321, 16821), (327, 16884),

Gene: Zhuangyuan_19 Start: 13779, Stop: 15026, Start Num: 25

Candidate Starts for Zhuangyuan_19:

(Start: 25 @13779 has 110 MA's), (41, 13845), (49, 13872), (50, 13875), (64, 13938), (69, 13962), (98, 14064), (117, 14145), (128, 14196), (131, 14214), (133, 14220), (144, 14265), (152, 14301), (164, 14337), (178, 14373), (182, 14385), (188, 14415), (189, 14418), (202, 14454), (212, 14496), (232, 14580), (234, 14586), (241, 14637), (250, 14661), (253, 14682), (279, 14835), (282, 14853), (302, 14916), (309, 14943), (312, 14952),

Gene: Zixiang_18 Start: 14417, Stop: 15688, Start Num: 25

Candidate Starts for Zixiang_18:

(Start: 25 @14417 has 110 MA's), (32, 14450), (41, 14483), (52, 14525), (66, 14585), (69, 14600), (88, 14666), (127, 14828), (128, 14831), (164, 14972), (178, 15011), (180, 15017), (189, 15056), (202, 15092), (229, 15200), (246, 15290), (252, 15314), (262, 15386), (264, 15401), (272, 15437), (282, 15491), (287, 15497), (289, 15509), (302, 15554), (305, 15560), (309, 15581), (312, 15590),

Gene: phiAsp2_30 Start: 25990, Stop: 27063, Start Num: 36

Candidate Starts for phiAsp2_30:

(36, 25990), (63, 26092), (111, 26269), (113, 26275), (131, 26341), (139, 26374), (146, 26407), (156, 26434), (160, 26446), (165, 26467), (170, 26488), (181, 26515), (184, 26530), (192, 26563), (207, 26602), (209, 26617), (234, 26713), (240, 26758), (261, 26866), (269, 26911), (281, 26974), (282, 26977), (293, 27004),