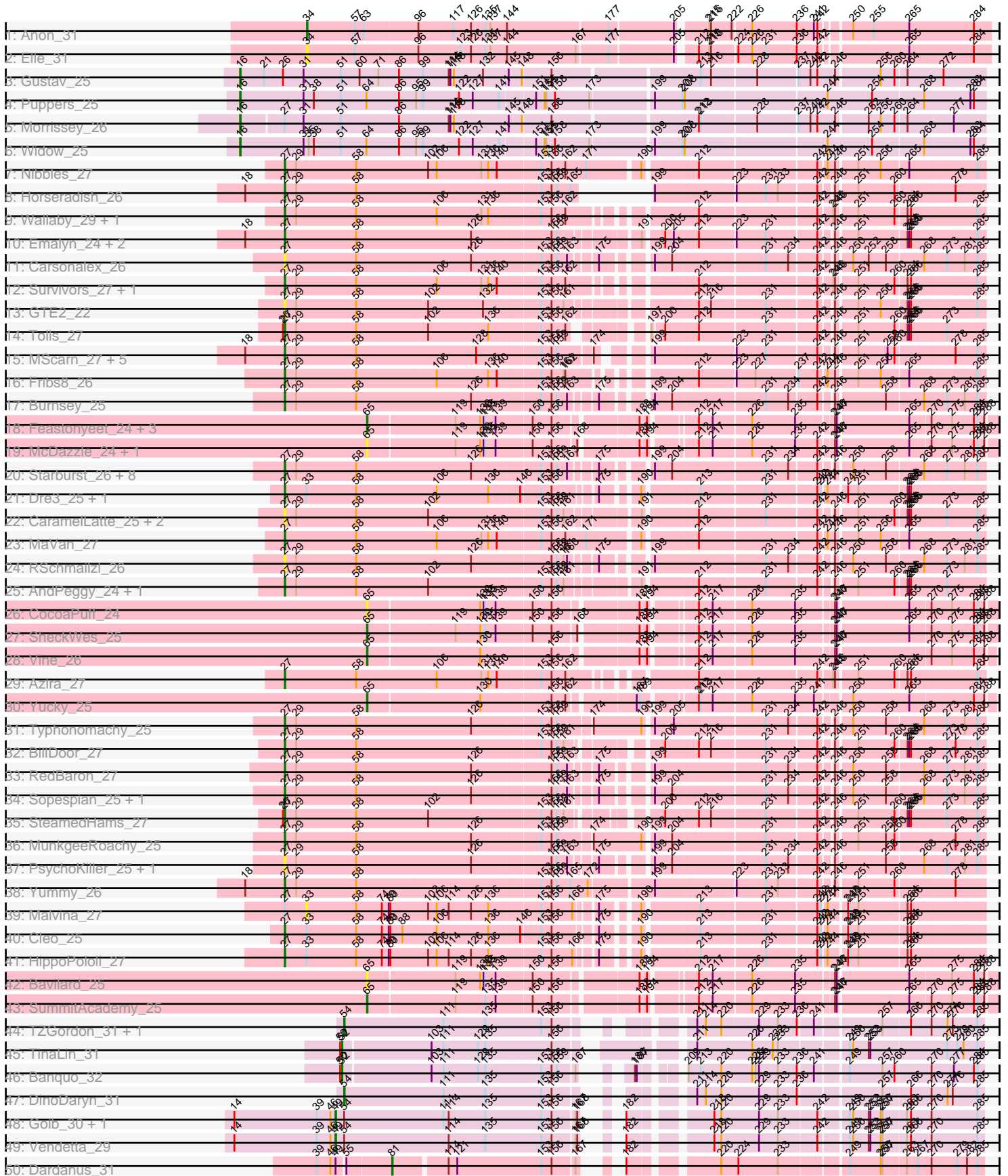
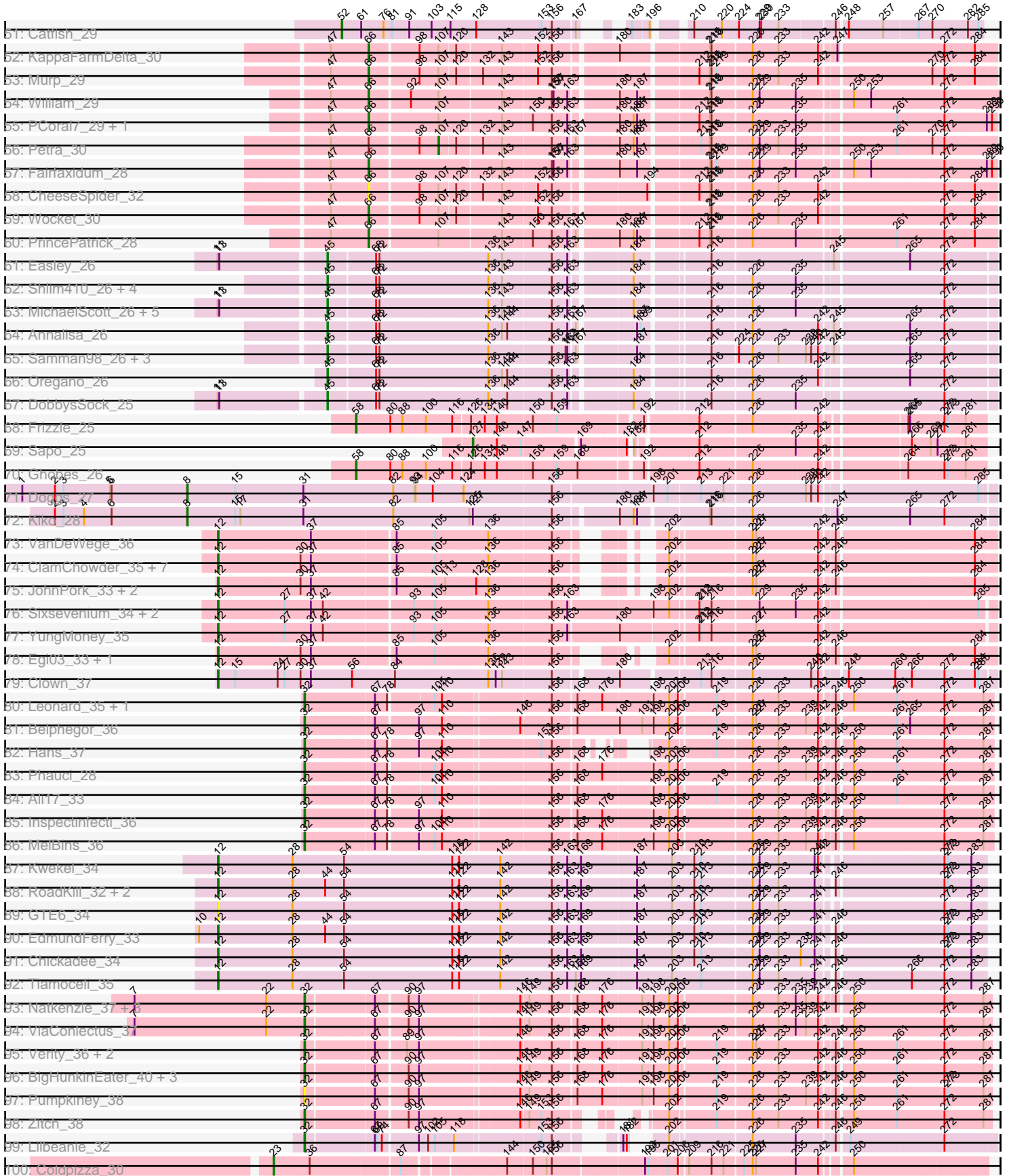


Pham 308124



Pham 308124



Note: Tracks are now grouped by subcluster and scaled. Switching in subcluster is indicated by changes in track color. Track scale is now set by default to display the region 30 bp upstream of start 1 to 30 bp downstream of the last possible start. If this default region is judged to be packed too tightly with annotated starts, the track will be further scaled to only show that region of the ORF with annotated starts. This action will be indicated by adding "Zoomed" to the title. For starts, yellow indicates the location of called starts comprised solely of Glimmer/GeneMark auto-annotations, green indicates the location of called starts with at least 1 manual gene annotation.

Pham 308124 Report

This analysis was run 06/27/26 on database version 652.

Pham number 308124 has 188 members, 34 are drafts.

Phages represented in each track:

- Track 1 : Anon_31
- Track 2 : Elle_31
- Track 3 : Gustav_25
- Track 4 : Poppers_25
- Track 5 : Morrissey_26
- Track 6 : Widow_25
- Track 7 : Nibbles_27
- Track 8 : Horseradish_26
- Track 9 : Wallaby_29, Wolfwood_27
- Track 10 : Emalyn_24, Amok_24, AikoCarson_24
- Track 11 : Carsonalex_26
- Track 12 : Survivors_27, Zareef_27
- Track 13 : GTE2_22
- Track 14 : Tolls_27
- Track 15 : MScarn_27, Blondies_26, Biskit_26, Buttrmlkdreams_25, SketchMex_24, Troje_25
- Track 16 : Fribs8_26
- Track 17 : Burnsey_25
- Track 18 : Feastonyeet_24, PotPie_25, Balloona_24, BigChungus_24
- Track 19 : McDazzle_24, ElJefes_24
- Track 20 : Starburst_26, Axym_25, RADical_26, Agatha_25, GoldHunter_26, Cozz_25, Socotra_26, Bubble_25, Quasar_25
- Track 21 : Dre3_25, Gibbous_25
- Track 22 : CaramelLatte_25, CanesSauce_25, ChocoMunchkin_25
- Track 23 : MaVan_27
- Track 24 : RSchmailzl_26
- Track 25 : AndPeggy_24, Yarn_24
- Track 26 : CocoaPuff_24
- Track 27 : SheckWes_25
- Track 28 : Vine_26
- Track 29 : Azira_27
- Track 30 : Yucky_25
- Track 31 : Typhonmarchy_25
- Track 32 : BillDoor_27
- Track 33 : RedBaron_27
- Track 34 : Sopespian_25, Nina_26
- Track 35 : SteamedHams_27

- Track 36 : MunkgeeRoachy_25
- Track 37 : PsychoKiller_25, Elliott_25
- Track 38 : Yummy_26
- Track 39 : Malvina_27
- Track 40 : Cleo_25
- Track 41 : HippoPololi_27
- Track 42 : Bavidard_25
- Track 43 : SummitAcademy_25
- Track 44 : TZGordon_31, Huffy_31
- Track 45 : TinaLin_31
- Track 46 : Banquo_32
- Track 47 : DinoDaryn_31
- Track 48 : Goib_30, Splinter_29
- Track 49 : Vendetta_29
- Track 50 : Dardanus_31
- Track 51 : Catfish_29
- Track 52 : KappaFarmDelta_30
- Track 53 : Murp_29
- Track 54 : William_29
- Track 55 : PCoral7_29, Toast_29
- Track 56 : Petra_30
- Track 57 : Fairfaxidum_28
- Track 58 : CheeseSpider_32
- Track 59 : Wocket_30
- Track 60 : PrincePatrick_28
- Track 61 : Easley_26
- Track 62 : Shlim410_26, Adora_26, Howe_26, Hortense_26, Twinkle_26
- Track 63 : MichaelScott_26, Dolores_26, Rizz_29, WinkNick_26, Mcklovin_26, Clark_26
- Track 64 : Annalisa_26
- Track 65 : Samman98_26, Dorito_25, Sekhmet_26, PhriskyACE_25
- Track 66 : Oregano_26
- Track 67 : DobbysSock_25
- Track 68 : Frizzle_25
- Track 69 : Sapo_25
- Track 70 : Ghobes_26
- Track 71 : Doggs_27
- Track 72 : Kiko_28
- Track 73 : VanDeWege_36
- Track 74 : ClamChowder_35, Danyall_35, Fugax_35, PinkCoffee_35, Barb_35, CoveyB_35, Twister6_35, Arri_36
- Track 75 : JohnPork_33, Portcullis_33, Shinji_33
- Track 76 : Sixsevenium_34, Bakery_34, SharkTale_33
- Track 77 : YungMoney_35
- Track 78 : Egi03_33, RogerDodger_36
- Track 79 : Clown_37
- Track 80 : Leonard_35, Phinally_35
- Track 81 : Belphegor_36
- Track 82 : Hans_37
- Track 83 : Phauci_28
- Track 84 : Ali17_33
- Track 85 : Inspectinfecti_36
- Track 86 : MelBins_36

- Track 87 : Kwekel_34
- Track 88 : RoadKill_32, Dexdert_35, Twonlo_32
- Track 89 : GTE6_34
- Track 90 : EdmundFerry_33
- Track 91 : Chickadee_34
- Track 92 : Tiamoceli_35
- Track 93 : Natkenzie_37, Abblin_37, Sampson_37, Scioto_37
- Track 94 : ViaConlectus_37
- Track 95 : Verity_36, Delrey21_36, DoctorFroggo_36
- Track 96 : BigHunkinEater_40, APunk_38, Tardus_38, Zipp_36
- Track 97 : Pumpkiney_38
- Track 98 : Zitch_38
- Track 99 : Lilbeanie_32
- Track 100 : Coldpizza_30
- Track 101 : TraderJ_29
- Track 102 : Ligma_27, Fresco_27, Axumite_27, Shatter_27
- Track 103 : BobRoss2024_26
- Track 104 : CaiB_29, Blackpen_29, AnarQue_29, MossRose_29, FelixTres_29, MakoManhole_29, CloverMinnie_29
- Track 105 : BiggityBass_27
- Track 106 : Sour_31
- Track 107 : AksarBAT_27
- Track 108 : NHagos_27
- Track 109 : CharlottesWeb_27, Mariokart_27, JellyBelly_27
- Track 110 : Wooper_29, Yeshua_29
- Track 111 : Gudmit_25

Summary of Final Annotations (See graph section above for start numbers):

The start number called the most often in the published annotations is 27, it was called in 38 of the 154 non-draft genes in the pham.

Genes that call this "Most Annotated" start:

• Agatha_25, AikoCarson_24, Amok_24, AndPeggy_24, Axym_25, Azira_27, BillDoor_27, Biskit_26, Blondies_26, Bubble_25, Burnsey_25, Buttrmlkdreams_25, CanesSauce_25, CaramelLatte_25, Carsonalex_26, ChocoMunchkin_25, Cleo_25, Cozz_25, Dre3_25, Elliott_25, Emalyn_24, Fribs8_26, GTE2_22, Gibbous_25, GoldHunter_26, HippoPololi_27, Horseradish_26, MScarn_27, MaVan_27, MunkgeeRoachy_25, Nibbles_27, Nina_26, PsychoKiller_25, Quasar_25, RADical_26, RSchmailzl_26, RedBaron_27, SketchMex_24, Socotra_26, Sopespian_25, Starburst_26, SteamedHams_27, Survivors_27, Tolls_27, Troje_25, Typhonomachy_25, Wallaby_29, Wolfwood_27, Yarn_24, Yummy_26, Zareef_27,

Genes that have the "Most Annotated" start but do not call it:

• Bakery_34, Clown_37, Malvina_27, Morrissey_26, SharkTale_33, Sixsevenium_34, YungMoney_35,

Genes that do not have the "Most Annotated" start:

• APunk_38, Abblin_37, Adora_26, AksarBAT_27, Ali17_33, AnarQue_29, Annalisa_26, Anon_31, Arri_36, Axumite_27, Balloona_24, Banquo_32, Barb_35,

Bavilard_25, Belphegor_36, BigChungus_24, BigHunkinEater_40, BiggityBass_27, Blackpen_29, BobRoss2024_26, CaiB_29, Catfish_29, CharlottesWeb_27, CheeseSpider_32, Chickadee_34, ClamChowder_35, Clark_26, CloverMinnie_29, CocoaPuff_24, Coldpizza_30, CoveyB_35, Danyall_35, Dardanus_31, Delrey21_36, Dxdert_35, DinoDaryn_31, DobbysSock_25, DoctorFroggo_36, Doggs_27, Dolores_26, Dorito_25, Easley_26, EdmundFerry_33, Egi03_33, ElJefes_24, Elle_31, Fairfaxidum_28, Feastonyeet_24, FelixTres_29, Fresco_27, Frizzle_25, Fugax_35, GTE6_34, Ghobes_26, Goib_30, Gudmit_25, Gustav_25, Hans_37, Hortense_26, Howe_26, Huffy_31, Inspectinfecti_36, JellyBelly_27, JohnPork_33, KappaFarmDelta_30, Kiko_28, Kwekel_34, Leonard_35, Ligma_27, Lilbeanie_32, MakoManhole_29, Mariokart_27, McDazzle_24, Mcklovin_26, MelBins_36, MichaelScott_26, MossRose_29, Murp_29, NHagos_27, Natkenzie_37, Oregano_26, PCoral7_29, Petra_30, Phauci_28, Phinally_35, PhriskyACE_25, PinkCoffee_35, Portcullis_33, PotPie_25, PrincePatrick_28, Pumpkiney_38, Puppies_25, Rizz_29, RoadKill_32, RogerDodger_36, Samman98_26, Sampson_37, Sapo_25, Scioto_37, Sekhmet_26, Shatter_27, SheckWes_25, Shinji_33, Shlim410_26, Sour_31, Splinter_29, SummitAcademy_25, TZGordon_31, Tardus_38, Tiamoceli_35, TinaLin_31, Toast_29, TraderJ_29, Twinkle_26, Twister6_35, Twonlo_32, VanDeWege_36, Vendetta_29, Verity_36, ViaConlectus_37, Vine_26, Widow_25, William_29, WinkNick_26, Wocket_30, Wooper_29, Yeshua_29, Yucky_25, Zipp_36, Zitch_38,

Summary by start number:

Start 8:

- Found in 2 of 188 (1.1%) of genes in pham
- Manual Annotations of this start: 2 of 154
- Called 100.0% of time when present
- Phage (with cluster) where this start called: Doggs_27 (DB), Kiko_28 (DB),

Start 12:

- Found in 27 of 188 (14.4%) of genes in pham
- Manual Annotations of this start: 22 of 154
- Called 100.0% of time when present
- Phage (with cluster) where this start called: Arri_36 (DC1), Bakery_34 (DC1), Barb_35 (DC1), Chickadee_34 (DE3), ClamChowder_35 (DC1), Clown_37 (DC2), CoveyB_35 (DC1), Danyall_35 (DC1), Dxdert_35 (DE3), EdmundFerry_33 (DE3), Egi03_33 (DC1), Fugax_35 (DC1), GTE6_34 (DE3), JohnPork_33 (DC1), Kwekel_34 (DE3), PinkCoffee_35 (DC1), Portcullis_33 (DC1), RoadKill_32 (DE3), RogerDodger_36 (DC1), SharkTale_33 (DC1), Shinji_33 (DC1), Sixsevenium_34 (DC1), Tiamoceli_35 (DE3), Twister6_35 (DC1), Twonlo_32 (DE3), VanDeWege_36 (DC1), YungMoney_35 (DC1),

Start 16:

- Found in 4 of 188 (2.1%) of genes in pham
- Manual Annotations of this start: 4 of 154
- Called 100.0% of time when present
- Phage (with cluster) where this start called: Gustav_25 (CD), Morrissey_26 (CD), Puppies_25 (CD), Widow_25 (CD),

Start 20:

- Found in 1 of 188 (0.5%) of genes in pham
- Manual Annotations of this start: 1 of 154

- Called 100.0% of time when present
- Phage (with cluster) where this start called: Sour_31 (DR),

Start 23:

- Found in 22 of 188 (11.7%) of genes in pham
- Manual Annotations of this start: 16 of 154
- Called 100.0% of time when present
- Phage (with cluster) where this start called: AksarBAT_27 (DR), AnarQue_29 (DR), Axumite_27 (DR), BiggityBass_27 (DR), Blackpen_29 (DR), BobRoss2024_26 (DR), CaiB_29 (DR), CharlottesWeb_27 (DR), CloverMinnie_29 (DR), Coldpizza_30 (DR), FelixTres_29 (DR), Fresco_27 (DR), JellyBelly_27 (DR), Ligma_27 (DR), MakoManhole_29 (DR), Mariokart_27 (DR), MossRose_29 (DR), NHagos_27 (DR), Shatter_27 (DR), TraderJ_29 (DR), Wooper_29 (DR), Yeshua_29 (DR),

Start 27:

- Found in 58 of 188 (30.9%) of genes in pham
- Manual Annotations of this start: 38 of 154
- Called 87.9% of time when present
- Phage (with cluster) where this start called: Agatha_25 (CT), AikoCarson_24 (CT), Amok_24 (CT), AndPeggy_24 (CT), Axym_25 (CT), Azira_27 (CT), BillDoor_27 (CT), Biskit_26 (CT), Blondies_26 (CT), Bubble_25 (CT), Burnsey_25 (CT), Buttrmlkdreams_25 (CT), CanesSauce_25 (CT), CaramelLatte_25 (CT), Carsonalex_26 (CT), ChocoMunchkin_25 (CT), Cleo_25 (CT), Cozz_25 (CT), Dre3_25 (CT), Elliott_25 (CT), Emalyn_24 (CT), Fribs8_26 (CT), GTE2_22 (CT), Gibbous_25 (CT), GoldHunter_26 (CT), HippoPololi_27 (CT), Horseradish_26 (CT), MScarn_27 (CT), MaVan_27 (CT), MunkgeeRoachy_25 (CT), Nibbles_27 (CT), Nina_26 (CT), PsychoKiller_25 (CT), Quasar_25 (CT), RADical_26 (CT), RSchmailzl_26 (CT), RedBaron_27 (CT), SketchMex_24 (CT), Socotra_26 (CT), Sopespian_25 (CT), Starburst_26 (CT), SteamedHams_27 (CT), Survivors_27 (CT), Tolls_27 (CT), Troje_25 (CT), Typhonmarchy_25 (CT), Wallaby_29 (CT), Wolfwood_27 (CT), Yarn_24 (CT), Yummy_26 (CT), Zareef_27 (CT),

Start 32:

- Found in 23 of 188 (12.2%) of genes in pham
- Manual Annotations of this start: 22 of 154
- Called 100.0% of time when present
- Phage (with cluster) where this start called: APunk_38 (DE4), Abblin_37 (DE4), Ali17_33 (DE2), Belphegor_36 (DE2), BigHunkinEater_40 (DE4), Delrey21_36 (DE4), DoctorFroggo_36 (DE4), Hans_37 (DE2), Inspectinfecti_36 (DE2), Leonard_35 (DE2), Lilbeanie_32 (DE5), MelBins_36 (DE2), Natkenzie_37 (DE4), Phauci_28 (DE2), Phinally_35 (DE2), Pumpkiney_38 (DE4), Sampson_37 (DE4), Scioto_37 (DE4), Tardus_38 (DE4), Verity_36 (DE4), ViaConlectus_37 (DE4), Zipp_36 (DE4), Zitch_38 (DE4),

Start 33:

- Found in 5 of 188 (2.7%) of genes in pham
- No Manual Annotations of this start.
- Called 20.0% of time when present
- Phage (with cluster) where this start called: Malvina_27 (CT),

Start 34:

- Found in 2 of 188 (1.1%) of genes in pham
- Manual Annotations of this start: 1 of 154

- Called 100.0% of time when present
- Phage (with cluster) where this start called: Anon_31 (A15), Elle_31 (A15),

Start 45:

- Found in 20 of 188 (10.6%) of genes in pham
- Manual Annotations of this start: 19 of 154
- Called 100.0% of time when present
- Phage (with cluster) where this start called: Adora_26 (CZ4), Annalisa_26 (CZ4), Clark_26 (CZ4), DobbysSock_25 (CZ4), Dolores_26 (CZ4), Dorito_25 (CZ4), Easley_26 (CZ4), Gudmit_25 (singleton), Hortense_26 (CZ4), Howe_26 (CZ4), Mcklovin_26 (CZ4), MichaelScott_26 (CZ4), Oregano_26 (CZ4), PhriskyACE_25 (CZ4), Rizz_29 (CZ4), Samman98_26 (CZ4), Sekhmet_26 (CZ4), Shlim410_26 (CZ4), Twinkle_26 (CZ4), WinkNick_26 (CZ4),

Start 49:

- Found in 6 of 188 (3.2%) of genes in pham
- Manual Annotations of this start: 3 of 154
- Called 50.0% of time when present
- Phage (with cluster) where this start called: Goib_30 (CU1), Splinter_29 (CU1), Vendetta_29 (CU1),

Start 52:

- Found in 3 of 188 (1.6%) of genes in pham
- Manual Annotations of this start: 3 of 154
- Called 100.0% of time when present
- Phage (with cluster) where this start called: Banquo_32 (CU1), Catfish_29 (CU5), TinaLin_31 (CU1),

Start 54:

- Found in 14 of 188 (7.4%) of genes in pham
- Manual Annotations of this start: 3 of 154
- Called 21.4% of time when present
- Phage (with cluster) where this start called: DinoDaryn_31 (CU1), Huffy_31 (CU1), TZGordon_31 (CU1),

Start 58:

- Found in 54 of 188 (28.7%) of genes in pham
- Manual Annotations of this start: 2 of 154
- Called 3.7% of time when present
- Phage (with cluster) where this start called: Frizzle_25 (DA), Ghobes_26 (DA),

Start 65:

- Found in 12 of 188 (6.4%) of genes in pham
- Manual Annotations of this start: 7 of 154
- Called 100.0% of time when present
- Phage (with cluster) where this start called: Balloona_24 (CT), Bavidard_25 (CT), BigChungus_24 (CT), CocoaPuff_24 (CT), ElJefes_24 (CT), Feastonyeet_24 (CT), McDazzle_24 (CT), PotPie_25 (CT), SheckWes_25 (CT), SummitAcademy_25 (CT), Vine_26 (CT), Yucky_25 (CT),

Start 66:

- Found in 10 of 188 (5.3%) of genes in pham
- Manual Annotations of this start: 8 of 154

- Called 90.0% of time when present
- Phage (with cluster) where this start called: CheeseSpider_32 (CV), Fairfaxidum_28 (CV), KappaFarmDelta_30 (CV), Murp_29 (CV), PCoral7_29 (CV), PrincePatrick_28 (CV), Toast_29 (CV), William_29 (CV), Wocket_30 (CV),

Start 81:

- Found in 14 of 188 (7.4%) of genes in pham
- Manual Annotations of this start: 1 of 154
- Called 7.1% of time when present
- Phage (with cluster) where this start called: Dardanus_31 (CU3),

Start 107:

- Found in 9 of 188 (4.8%) of genes in pham
- Manual Annotations of this start: 1 of 154
- Called 11.1% of time when present
- Phage (with cluster) where this start called: Petra_30 (CV),

Start 127:

- Found in 4 of 188 (2.1%) of genes in pham
- Manual Annotations of this start: 1 of 154
- Called 25.0% of time when present
- Phage (with cluster) where this start called: Sapo_25 (DA),

Summary by clusters:

There are 18 clusters represented in this pham: A15, singleton, DA, CU1, DB, DE2, DE3, DE4, DE5, CZ4, CD, DC2, CU5, CU3, CT, DR, CV, DC1,

Info for manual annotations of cluster A15:

- Start number 34 was manually annotated 1 time for cluster A15.

Info for manual annotations of cluster CD:

- Start number 16 was manually annotated 4 times for cluster CD.

Info for manual annotations of cluster CT:

- Start number 27 was manually annotated 38 times for cluster CT.
- Start number 65 was manually annotated 7 times for cluster CT.

Info for manual annotations of cluster CU1:

- Start number 49 was manually annotated 3 times for cluster CU1.
- Start number 52 was manually annotated 2 times for cluster CU1.
- Start number 54 was manually annotated 3 times for cluster CU1.

Info for manual annotations of cluster CU3:

- Start number 81 was manually annotated 1 time for cluster CU3.

Info for manual annotations of cluster CU5:

- Start number 52 was manually annotated 1 time for cluster CU5.

Info for manual annotations of cluster CV:

- Start number 66 was manually annotated 8 times for cluster CV.
- Start number 107 was manually annotated 1 time for cluster CV.

Info for manual annotations of cluster CZ4:

- Start number 45 was manually annotated 18 times for cluster CZ4.

Info for manual annotations of cluster DA:

- Start number 58 was manually annotated 2 times for cluster DA.
- Start number 127 was manually annotated 1 time for cluster DA.

Info for manual annotations of cluster DB:

- Start number 8 was manually annotated 2 times for cluster DB.

Info for manual annotations of cluster DC1:

- Start number 12 was manually annotated 14 times for cluster DC1.

Info for manual annotations of cluster DC2:

- Start number 12 was manually annotated 1 time for cluster DC2.

Info for manual annotations of cluster DE2:

- Start number 32 was manually annotated 8 times for cluster DE2.

Info for manual annotations of cluster DE3:

- Start number 12 was manually annotated 7 times for cluster DE3.

Info for manual annotations of cluster DE4:

- Start number 32 was manually annotated 13 times for cluster DE4.

Info for manual annotations of cluster DE5:

- Start number 32 was manually annotated 1 time for cluster DE5.

Info for manual annotations of cluster DR:

- Start number 20 was manually annotated 1 time for cluster DR.
- Start number 23 was manually annotated 16 times for cluster DR.

Gene Information:

Gene: APunk_38 Start: 32541, Stop: 33617, Start Num: 32

Candidate Starts for APunk_38:

(Start: 32 @32541 has 22 MA's), (67, 32649), (90, 32697), (97, 32715), (146, 32862), (149, 32874), (156, 32913), (168, 32952), (176, 32994), (191, 33060), (198, 33075), (202, 33102), (206, 33117), (219, 33174), (226, 33228), (233, 33273), (242, 33342), (246, 33363), (250, 33387), (261, 33462), (272, 33540), (287, 33606),

Gene: Abblin_37 Start: 33084, Stop: 34160, Start Num: 32

Candidate Starts for Abblin_37:

(7, 32790), (22, 33018), (Start: 32 @33084 has 22 MA's), (67, 33192), (90, 33240), (97, 33258), (146, 33405), (149, 33417), (156, 33456), (168, 33495), (176, 33537), (191, 33603), (198, 33618), (202, 33645), (206, 33660), (226, 33771), (233, 33816), (235, 33846), (239, 33864), (242, 33885), (246, 33906), (250, 33930), (272, 34083), (287, 34149),

Gene: Adora_26 Start: 22572, Stop: 23609, Start Num: 45

Candidate Starts for Adora_26:

(Start: 45 @22572 has 19 MA's), (68, 22641), (72, 22647), (136, 22827), (143, 22848), (156, 22929), (163, 22956), (184, 23049), (216, 23157), (226, 23220), (235, 23295), (272, 23526),

Gene: Agatha_25 Start: 20517, Stop: 21614, Start Num: 27

Candidate Starts for Agatha_25:

(Start: 27 @20517 has 38 MA's), (29, 20535), (Start: 58 @20640 has 2 MA's), (126, 20838), (153, 20952), (156, 20970), (159, 20979), (163, 20997), (175, 21033), (199, 21093), (204, 21123), (231, 21273), (234, 21312), (242, 21357), (246, 21375), (250, 21399), (258, 21456), (268, 21516), (273, 21552), (281, 21582), (285, 21603),

Gene: AikoCarson_24 Start: 19778, Stop: 20890, Start Num: 27

Candidate Starts for AikoCarson_24:

(18, 19709), (Start: 27 @19778 has 38 MA's), (Start: 58 @19901 has 2 MA's), (126, 20099), (156, 20231), (159, 20240), (191, 20357), (200, 20387), (205, 20402), (212, 20441), (223, 20498), (231, 20549), (242, 20633), (246, 20651), (251, 20684), (264, 20765), (265, 20768), (266, 20771), (285, 20879),

Gene: AksarBAT_27 Start: 26586, Stop: 27698, Start Num: 23

Candidate Starts for AksarBAT_27:

(Start: 23 @26586 has 16 MA's), (39, 26655), (Start: 49 @26688 has 3 MA's), (53, 26700), (67, 26751), (Start: 81 @26775 has 1 MA's), (87, 26790), (109, 26856), (144, 26970), (150, 27009), (178, 27108), (195, 27168), (213, 27243), (218, 27267), (219, 27270), (225, 27306), (226, 27321), (227, 27327), (229, 27333), (233, 27366), (242, 27432), (251, 27486), (285, 27684),

Gene: Ali17_33 Start: 30788, Stop: 31876, Start Num: 32

Candidate Starts for Ali17_33:

(Start: 32 @30788 has 22 MA's), (67, 30902), (78, 30923), (105, 30992), (110, 31004), (156, 31169), (168, 31208), (198, 31331), (202, 31358), (206, 31373), (219, 31430), (226, 31484), (233, 31529), (242, 31598), (246, 31619), (250, 31643), (261, 31718), (272, 31796), (287, 31862),

Gene: Amok_24 Start: 19775, Stop: 20848, Start Num: 27

Candidate Starts for Amok_24:

(18, 19706), (Start: 27 @19775 has 38 MA's), (Start: 58 @19898 has 2 MA's), (126, 20096), (156, 20228), (159, 20237), (191, 20315), (200, 20345), (205, 20360), (212, 20399), (223, 20456), (231, 20507), (242, 20591), (246, 20609), (251, 20642), (264, 20723), (265, 20726), (266, 20729), (285, 20837),

Gene: AnarQue_29 Start: 28071, Stop: 29183, Start Num: 23

Candidate Starts for AnarQue_29:

(Start: 23 @28071 has 16 MA's), (53, 28185), (67, 28236), (73, 28245), (Start: 81 @28260 has 1 MA's), (87, 28275), (109, 28341), (144, 28455), (146, 28476), (156, 28527), (168, 28566), (178, 28590), (195, 28650), (219, 28752), (225, 28788), (226, 28803), (242, 28914), (245, 28932), (251, 28968),

Gene: AndPeggy_24 Start: 20180, Stop: 21292, Start Num: 27

Candidate Starts for AndPeggy_24:

(Start: 27 @20180 has 38 MA's), (29, 20198), (Start: 58 @20303 has 2 MA's), (102, 20426), (153, 20615), (156, 20633), (159, 20642), (161, 20654), (191, 20759), (212, 20843), (231, 20951), (242, 21035), (246, 21053), (251, 21086), (260, 21149), (264, 21167), (265, 21170), (266, 21173), (273, 21230),

Gene: Annalisa_26 Start: 22034, Stop: 23074, Start Num: 45

Candidate Starts for Annalisa_26:

(Start: 45 @22034 has 19 MA's), (68, 22103), (72, 22109), (136, 22289), (143, 22310), (144, 22319), (156, 22391), (163, 22418), (167, 22427), (187, 22514), (189, 22520), (216, 22619), (226, 22682), (242, 22796), (245, 22811), (265, 22934), (272, 22991),

Gene: Anon_31 Start: 22310, Stop: 23416, Start Num: 34

Candidate Starts for Anon_31:

(Start: 34 @22310 has 1 MA's), (57, 22391), (63, 22406), (96, 22499), (117, 22559), (126, 22589), (135, 22613), (137, 22622), (144, 22646), (177, 22814), (205, 22919), (215, 22964), (216, 22967), (222, 23000), (226, 23030), (236, 23108), (241, 23138), (242, 23144), (250, 23186), (255, 23222), (265, 23279), (284, 23387),

Gene: Arri_36 Start: 28916, Stop: 30088, Start Num: 12

Candidate Starts for Arri_36:

(Start: 12 @28916 has 22 MA's), (30, 29057), (37, 29075), (85, 29210), (105, 29276), (136, 29363), (156, 29465), (202, 29570), (226, 29696), (227, 29702), (242, 29810), (246, 29828), (284, 30053),

Gene: Axumite_27 Start: 26078, Stop: 27217, Start Num: 23

Candidate Starts for Axumite_27:

(Start: 23 @26078 has 16 MA's), (25, 26087), (36, 26135), (48, 26174), (53, 26192), (76, 26261), (101, 26330), (103, 26339), (144, 26465), (156, 26537), (163, 26564), (164, 26567), (179, 26639), (198, 26693), (211, 26756), (217, 26783), (219, 26789), (226, 26840), (239, 26930), (272, 27143), (285, 27200), (286, 27206), (287, 27209),

Gene: Axym_25 Start: 20517, Stop: 21614, Start Num: 27

Candidate Starts for Axym_25:

(Start: 27 @20517 has 38 MA's), (29, 20535), (Start: 58 @20640 has 2 MA's), (126, 20838), (153, 20952), (156, 20970), (159, 20979), (163, 20997), (175, 21033), (199, 21093), (204, 21123), (231, 21273), (234, 21312), (242, 21357), (246, 21375), (250, 21399), (258, 21456), (268, 21516), (273, 21552), (281, 21582), (285, 21603),

Gene: Azira_27 Start: 21488, Stop: 22588, Start Num: 27

Candidate Starts for Azira_27:

(Start: 27 @21488 has 38 MA's), (Start: 58 @21611 has 2 MA's), (106, 21749), (131, 21827), (136, 21839), (140, 21854), (153, 21923), (156, 21941), (162, 21965), (212, 22133), (242, 22325), (245, 22346), (246, 22349), (251, 22382), (260, 22445), (264, 22463), (266, 22469), (285, 22577),

Gene: Bakery_34 Start: 28127, Stop: 29377, Start Num: 12

Candidate Starts for Bakery_34:

(Start: 12 @28127 has 22 MA's), (Start: 27 @28241 has 38 MA's), (37, 28286), (42, 28307), (93, 28451), (105, 28487), (136, 28574), (156, 28676), (163, 28703), (198, 28838), (202, 28865), (212, 28907), (213, 28910), (216, 28928), (229, 29003), (235, 29066), (242, 29105), (285, 29354),

Gene: Balloona_24 Start: 20277, Stop: 21269, Start Num: 65

Candidate Starts for Balloona_24:

(Start: 65 @20277 has 7 MA's), (119, 20424), (130, 20466), (133, 20472), (135, 20475), (139, 20493), (150, 20550), (156, 20583), (188, 20712), (194, 20721), (212, 20790), (217, 20814), (226, 20874), (235, 20949), (246, 21009), (247, 21012), (265, 21129), (270, 21162), (275, 21198), (284, 21234), (285, 21240), (288, 21252),

Gene: Banquo_32 Start: 23108, Stop: 24055, Start Num: 52

Candidate Starts for Banquo_32:

(50, 23105), (Start: 52 @23108 has 3 MA's), (103, 23255), (111, 23276), (129, 23333), (135, 23345), (153, 23438), (156, 23456), (159, 23465), (167, 23492), (186, 23525), (187, 23528), (209, 23576),

(213, 23597), (220, 23633), (226, 23684), (227, 23690), (229, 23696), (233, 23729), (236, 23762), (241, 23786), (249, 23834), (257, 23891), (260, 23912), (270, 23969), (277, 24008), (284, 24041), (285, 24047),

Gene: Barb_35 Start: 28934, Stop: 30106, Start Num: 12

Candidate Starts for Barb_35:

(Start: 12 @28934 has 22 MA's), (30, 29075), (37, 29093), (85, 29228), (105, 29294), (136, 29381), (156, 29483), (202, 29588), (226, 29714), (227, 29720), (242, 29828), (246, 29846), (284, 30071),

Gene: Bavilard_25 Start: 21062, Stop: 22054, Start Num: 65

Candidate Starts for Bavilard_25:

(Start: 65 @21062 has 7 MA's), (119, 21209), (130, 21251), (133, 21257), (135, 21260), (139, 21278), (150, 21335), (156, 21368), (188, 21497), (194, 21506), (212, 21575), (217, 21599), (226, 21659), (235, 21734), (246, 21794), (247, 21797), (265, 21914), (275, 21983), (284, 22019), (285, 22025), (288, 22037),

Gene: Belphegor_36 Start: 32996, Stop: 34081, Start Num: 32

Candidate Starts for Belphegor_36:

(Start: 32 @32996 has 22 MA's), (67, 33110), (97, 33176), (110, 33212), (146, 33326), (156, 33377), (168, 33416), (180, 33485), (191, 33524), (198, 33539), (202, 33566), (206, 33581), (219, 33638), (226, 33692), (227, 33698), (233, 33737), (239, 33785), (242, 33806), (246, 33824), (261, 33923), (265, 33944), (272, 34001), (287, 34067),

Gene: BigChungus_24 Start: 20320, Stop: 21312, Start Num: 65

Candidate Starts for BigChungus_24:

(Start: 65 @20320 has 7 MA's), (119, 20467), (130, 20509), (133, 20515), (135, 20518), (139, 20536), (150, 20593), (156, 20626), (188, 20755), (194, 20764), (212, 20833), (217, 20857), (226, 20917), (235, 20992), (246, 21052), (247, 21055), (265, 21172), (270, 21205), (275, 21241), (284, 21277), (285, 21283), (288, 21295),

Gene: BigHunkinEater_40 Start: 32322, Stop: 33398, Start Num: 32

Candidate Starts for BigHunkinEater_40:

(Start: 32 @32322 has 22 MA's), (67, 32430), (90, 32478), (97, 32496), (146, 32643), (149, 32655), (156, 32694), (168, 32733), (176, 32775), (191, 32841), (198, 32856), (202, 32883), (206, 32898), (219, 32955), (226, 33009), (233, 33054), (242, 33123), (246, 33144), (250, 33168), (261, 33243), (272, 33321), (287, 33387),

Gene: BiggityBass_27 Start: 28347, Stop: 29480, Start Num: 23

Candidate Starts for BiggityBass_27:

(Start: 23 @28347 has 16 MA's), (41, 28425), (53, 28461), (156, 28797), (160, 28809), (170, 28851), (198, 28959), (225, 29091), (226, 29106), (233, 29151), (248, 29250), (250, 29259), (285, 29466), (286, 29472),

Gene: BillDoor_27 Start: 20148, Stop: 21239, Start Num: 27

Candidate Starts for BillDoor_27:

(Start: 27 @20148 has 38 MA's), (29, 20166), (Start: 58 @20271 has 2 MA's), (153, 20583), (156, 20601), (159, 20610), (161, 20622), (200, 20736), (212, 20790), (216, 20811), (231, 20898), (242, 20982), (246, 21000), (251, 21033), (260, 21096), (264, 21114), (265, 21117), (266, 21120), (273, 21177), (278, 21192), (285, 21228),

Gene: Biskit_26 Start: 20168, Stop: 21265, Start Num: 27

Candidate Starts for Biskit_26:

(18, 20099), (Start: 27 @20168 has 38 MA's), (29, 20186), (Start: 58 @20291 has 2 MA's), (128, 20498), (153, 20603), (156, 20621), (159, 20630), (174, 20684), (199, 20744), (223, 20873), (231, 20924), (242, 21008), (246, 21026), (251, 21059), (259, 21110), (260, 21122), (278, 21218), (285, 21254),

Gene: Blackpen_29 Start: 27489, Stop: 28601, Start Num: 23

Candidate Starts for Blackpen_29:

(Start: 23 @27489 has 16 MA's), (53, 27603), (67, 27654), (73, 27663), (Start: 81 @27678 has 1 MA's), (87, 27693), (109, 27759), (144, 27873), (146, 27894), (156, 27945), (168, 27984), (178, 28008), (195, 28068), (219, 28170), (225, 28206), (226, 28221), (242, 28332), (245, 28350), (251, 28386),

Gene: Blondies_26 Start: 20151, Stop: 21248, Start Num: 27

Candidate Starts for Blondies_26:

(18, 20082), (Start: 27 @20151 has 38 MA's), (29, 20169), (Start: 58 @20274 has 2 MA's), (128, 20481), (153, 20586), (156, 20604), (159, 20613), (174, 20667), (199, 20727), (223, 20856), (231, 20907), (242, 20991), (246, 21009), (251, 21042), (259, 21093), (260, 21105), (278, 21201), (285, 21237),

Gene: BobRoss2024_26 Start: 26114, Stop: 27235, Start Num: 23

Candidate Starts for BobRoss2024_26:

(Start: 23 @26114 has 16 MA's), (87, 26321), (128, 26450), (138, 26480), (150, 26540), (156, 26573), (178, 26636), (212, 26768), (216, 26789), (242, 26966), (251, 27017), (252, 27035),

Gene: Bubble_25 Start: 20517, Stop: 21614, Start Num: 27

Candidate Starts for Bubble_25:

(Start: 27 @20517 has 38 MA's), (29, 20535), (Start: 58 @20640 has 2 MA's), (126, 20838), (153, 20952), (156, 20970), (159, 20979), (163, 20997), (175, 21033), (199, 21093), (204, 21123), (231, 21273), (234, 21312), (242, 21357), (246, 21375), (250, 21399), (258, 21456), (268, 21516), (273, 21552), (281, 21582), (285, 21603),

Gene: Burnsey_25 Start: 20518, Stop: 21615, Start Num: 27

Candidate Starts for Burnsey_25:

(Start: 27 @20518 has 38 MA's), (29, 20536), (Start: 58 @20641 has 2 MA's), (126, 20839), (153, 20953), (156, 20971), (159, 20980), (163, 20998), (175, 21034), (199, 21094), (204, 21124), (231, 21274), (234, 21313), (242, 21358), (246, 21376), (258, 21457), (268, 21517), (273, 21553), (281, 21583), (285, 21604),

Gene: Buttrmlkdreams_25 Start: 20150, Stop: 21247, Start Num: 27

Candidate Starts for Buttrmlkdreams_25:

(18, 20081), (Start: 27 @20150 has 38 MA's), (29, 20168), (Start: 58 @20273 has 2 MA's), (128, 20480), (153, 20585), (156, 20603), (159, 20612), (174, 20666), (199, 20726), (223, 20855), (231, 20906), (242, 20990), (246, 21008), (251, 21041), (259, 21092), (260, 21104), (278, 21200), (285, 21236),

Gene: CaiB_29 Start: 28057, Stop: 29169, Start Num: 23

Candidate Starts for CaiB_29:

(Start: 23 @28057 has 16 MA's), (53, 28171), (67, 28222), (73, 28231), (Start: 81 @28246 has 1 MA's), (87, 28261), (109, 28327), (144, 28441), (146, 28462), (156, 28513), (168, 28552), (178, 28576), (195, 28636), (219, 28738), (225, 28774), (226, 28789), (242, 28900), (245, 28918), (251, 28954),

Gene: CanesSauce_25 Start: 20181, Stop: 21293, Start Num: 27

Candidate Starts for CanesSauce_25:

(Start: 27 @20181 has 38 MA's), (29, 20199), (Start: 58 @20304 has 2 MA's), (102, 20427), (153, 20616), (156, 20634), (159, 20643), (161, 20655), (191, 20760), (212, 20844), (231, 20952), (242, 21036), (246, 21054), (251, 21087), (260, 21150), (264, 21168), (265, 21171), (266, 21174), (273, 21231), (285, 21282),

Gene: CaramellLatte_25 Start: 20181, Stop: 21293, Start Num: 27

Candidate Starts for CaramellLatte_25:

(Start: 27 @20181 has 38 MA's), (29, 20199), (Start: 58 @20304 has 2 MA's), (102, 20427), (153, 20616), (156, 20634), (159, 20643), (161, 20655), (191, 20760), (212, 20844), (231, 20952), (242, 21036), (246, 21054), (251, 21087), (260, 21150), (264, 21168), (265, 21171), (266, 21174), (273, 21231), (285, 21282),

Gene: Carsonalex_26 Start: 20575, Stop: 21672, Start Num: 27

Candidate Starts for Carsonalex_26:

(Start: 27 @20575 has 38 MA's), (Start: 58 @20698 has 2 MA's), (126, 20896), (153, 21010), (156, 21028), (159, 21037), (163, 21055), (175, 21091), (199, 21151), (204, 21181), (231, 21331), (234, 21370), (242, 21415), (246, 21433), (250, 21457), (252, 21484), (258, 21514), (268, 21574), (273, 21610), (281, 21640), (285, 21661),

Gene: Catfish_29 Start: 24416, Stop: 25366, Start Num: 52

Candidate Starts for Catfish_29:

(Start: 52 @24416 has 3 MA's), (61, 24446), (76, 24482), (Start: 81 @24497 has 1 MA's), (91, 24527), (103, 24566), (115, 24599), (128, 24641), (153, 24749), (156, 24767), (167, 24803), (183, 24830), (196, 24854), (210, 24896), (220, 24944), (224, 24971), (229, 25007), (230, 25010), (233, 25040), (246, 25127), (248, 25142), (257, 25202), (267, 25259), (270, 25280), (282, 25340), (285, 25358),

Gene: CharlottesWeb_27 Start: 26001, Stop: 27152, Start Num: 23

Candidate Starts for CharlottesWeb_27:

(Start: 23 @26001 has 16 MA's), (36, 26061), (87, 26211), (101, 26256), (103, 26265), (108, 26277), (112, 26286), (144, 26391), (156, 26463), (190, 26610), (211, 26694), (212, 26697), (215, 26715), (217, 26721), (219, 26727), (224, 26754), (225, 26763), (226, 26778), (248, 26922), (249, 26925), (250, 26931), (272, 27081), (285, 27138), (286, 27144),

Gene: CheeseSpider_32 Start: 23943, Stop: 24920, Start Num: 66

Candidate Starts for CheeseSpider_32:

(47, 23883), (Start: 66 @23943 has 8 MA's), (98, 24024), (Start: 107 @24057 has 1 MA's), (120, 24084), (132, 24123), (143, 24150), (152, 24207), (156, 24231), (194, 24369), (212, 24444), (215, 24462), (216, 24465), (226, 24528), (233, 24573), (242, 24642), (272, 24834), (284, 24885),

Gene: Chickadee_34 Start: 29877, Stop: 31157, Start Num: 12

Candidate Starts for Chickadee_34:

(Start: 12 @29877 has 22 MA's), (28, 30006), (Start: 54 @30096 has 3 MA's), (116, 30279), (122, 30291), (142, 30363), (156, 30453), (163, 30480), (169, 30504), (187, 30597), (203, 30657), (210, 30696), (213, 30708), (226, 30792), (229, 30804), (233, 30837), (238, 30876), (241, 30900), (246, 30918), (272, 31086), (273, 31092), (283, 31131),

Gene: ChocoMunchkin_25 Start: 20181, Stop: 21293, Start Num: 27

Candidate Starts for ChocoMunchkin_25:

(Start: 27 @20181 has 38 MA's), (29, 20199), (Start: 58 @20304 has 2 MA's), (102, 20427), (153, 20616), (156, 20634), (159, 20643), (161, 20655), (191, 20760), (212, 20844), (231, 20952), (242, 21036), (246, 21054), (251, 21087), (260, 21150), (264, 21168), (265, 21171), (266, 21174), (273, 21231), (285, 21282),

Gene: ClamChowder_35 Start: 28934, Stop: 30106, Start Num: 12

Candidate Starts for ClamChowder_35:

(Start: 12 @28934 has 22 MA's), (30, 29075), (37, 29093), (85, 29228), (105, 29294), (136, 29381), (156, 29483), (202, 29588), (226, 29714), (227, 29720), (242, 29828), (246, 29846), (284, 30071),

Gene: Clark_26 Start: 22034, Stop: 23071, Start Num: 45

Candidate Starts for Clark_26:

(11, 21863), (13, 21866), (Start: 45 @22034 has 19 MA's), (68, 22103), (72, 22109), (136, 22289), (143, 22310), (156, 22391), (163, 22418), (184, 22511), (216, 22619), (226, 22682), (235, 22757), (272, 22988),

Gene: Cleo_25 Start: 20832, Stop: 21935, Start Num: 27

Candidate Starts for Cleo_25:

(Start: 27 @20832 has 38 MA's), (33, 20868), (Start: 58 @20955 has 2 MA's), (74, 21000), (79, 21012), (80, 21015), (88, 21036), (106, 21093), (136, 21183), (146, 21234), (153, 21267), (156, 21285), (175, 21348), (190, 21396), (213, 21483), (231, 21588), (242, 21672), (243, 21678), (244, 21684), (248, 21711), (249, 21714), (251, 21729), (264, 21810), (266, 21816),

Gene: CloverMinnie_29 Start: 27997, Stop: 29109, Start Num: 23

Candidate Starts for CloverMinnie_29:

(Start: 23 @27997 has 16 MA's), (53, 28111), (67, 28162), (73, 28171), (Start: 81 @28186 has 1 MA's), (87, 28201), (109, 28267), (144, 28381), (146, 28402), (156, 28453), (168, 28492), (178, 28516), (195, 28576), (219, 28678), (225, 28714), (226, 28729), (242, 28840), (245, 28858), (251, 28894),

Gene: Clown_37 Start: 30957, Stop: 32189, Start Num: 12

Candidate Starts for Clown_37:

(Start: 12 @30957 has 22 MA's), (15, 30987), (24, 31059), (Start: 27 @31071 has 38 MA's), (30, 31098), (37, 31116), (56, 31185), (84, 31251), (136, 31404), (139, 31416), (143, 31425), (156, 31506), (180, 31602), (213, 31719), (216, 31737), (226, 31800), (240, 31902), (242, 31914), (248, 31947), (260, 32028), (266, 32052), (272, 32106), (284, 32157), (285, 32163),

Gene: CocoaPuff_24 Start: 20274, Stop: 21266, Start Num: 65

Candidate Starts for CocoaPuff_24:

(Start: 65 @20274 has 7 MA's), (130, 20463), (133, 20469), (135, 20472), (139, 20490), (150, 20547), (156, 20580), (188, 20709), (194, 20718), (212, 20787), (217, 20811), (226, 20871), (235, 20946), (246, 21006), (247, 21009), (265, 21126), (270, 21159), (275, 21195), (284, 21231), (285, 21237), (288, 21249),

Gene: Coldpizza_30 Start: 30502, Stop: 31638, Start Num: 23

Candidate Starts for Coldpizza_30:

(Start: 23 @30502 has 16 MA's), (36, 30559), (87, 30706), (144, 30868), (150, 30907), (155, 30931), (156, 30940), (193, 31090), (195, 31096), (201, 31129), (206, 31147), (209, 31156), (216, 31195), (221, 31216), (225, 31243), (226, 31258), (227, 31264), (235, 31333), (242, 31372), (250, 31414),

Gene: CoveyB_35 Start: 28734, Stop: 29906, Start Num: 12

Candidate Starts for CoveyB_35:

(Start: 12 @28734 has 22 MA's), (30, 28875), (37, 28893), (85, 29028), (105, 29094), (136, 29181), (156, 29283), (202, 29388), (226, 29514), (227, 29520), (242, 29628), (246, 29646), (284, 29871),

Gene: Cozz_25 Start: 20518, Stop: 21615, Start Num: 27

Candidate Starts for Cozz_25:

(Start: 27 @20518 has 38 MA's), (29, 20536), (Start: 58 @20641 has 2 MA's), (126, 20839), (153, 20953), (156, 20971), (159, 20980), (163, 20998), (175, 21034), (199, 21094), (204, 21124), (231,

21274), (234, 21313), (242, 21358), (246, 21376), (250, 21400), (258, 21457), (268, 21517), (273, 21553), (281, 21583), (285, 21604),

Gene: Danyall_35 Start: 28734, Stop: 29906, Start Num: 12

Candidate Starts for Danyall_35:

(Start: 12 @28734 has 22 MA's), (30, 28875), (37, 28893), (85, 29028), (105, 29094), (136, 29181), (156, 29283), (202, 29388), (226, 29514), (227, 29520), (242, 29628), (246, 29646), (284, 29871),

Gene: Dardanus_31 Start: 23524, Stop: 24384, Start Num: 81

Candidate Starts for Dardanus_31:

(39, 23410), (46, 23434), (Start: 49 @23443 has 3 MA's), (55, 23455), (Start: 81 @23524 has 1 MA's), (114, 23611), (121, 23626), (153, 23764), (156, 23782), (167, 23818), (182, 23836), (220, 23959), (224, 23986), (233, 24055), (249, 24160), (256, 24214), (257, 24217), (263, 24256), (267, 24274), (270, 24295), (279, 24340), (282, 24355), (285, 24373),

Gene: Delrey21_36 Start: 33271, Stop: 34347, Start Num: 32

Candidate Starts for Delrey21_36:

(Start: 32 @33271 has 22 MA's), (67, 33379), (89, 33424), (97, 33445), (146, 33592), (156, 33643), (168, 33682), (176, 33724), (191, 33790), (198, 33805), (202, 33832), (206, 33847), (219, 33904), (226, 33958), (227, 33964), (233, 34003), (242, 34072), (246, 34093), (250, 34117), (261, 34192), (272, 34270), (287, 34336),

Gene: Dextert_35 Start: 30320, Stop: 31600, Start Num: 12

Candidate Starts for Dextert_35:

(Start: 12 @30320 has 22 MA's), (28, 30449), (44, 30506), (Start: 54 @30539 has 3 MA's), (116, 30722), (122, 30734), (142, 30806), (156, 30896), (163, 30923), (169, 30947), (187, 31040), (203, 31100), (210, 31139), (213, 31151), (226, 31235), (229, 31247), (233, 31280), (241, 31343), (246, 31361), (272, 31529), (273, 31535), (283, 31574),

Gene: DinoDaryn_31 Start: 22562, Stop: 23509, Start Num: 54

Candidate Starts for DinoDaryn_31:

(Start: 54 @22562 has 3 MA's), (111, 22733), (135, 22802), (153, 22895), (156, 22913), (211, 23045), (214, 23060), (220, 23087), (229, 23150), (233, 23183), (236, 23216), (257, 23345), (266, 23390), (270, 23420), (274, 23447), (276, 23456), (285, 23498),

Gene: DobbysSock_25 Start: 21508, Stop: 22545, Start Num: 45

Candidate Starts for DobbysSock_25:

(11, 21337), (13, 21340), (Start: 45 @21508 has 19 MA's), (68, 21577), (72, 21583), (136, 21763), (144, 21793), (156, 21865), (163, 21892), (184, 21985), (216, 22093), (226, 22156), (235, 22231), (272, 22462),

Gene: DoctorFroggo_36 Start: 33271, Stop: 34347, Start Num: 32

Candidate Starts for DoctorFroggo_36:

(Start: 32 @33271 has 22 MA's), (67, 33379), (89, 33424), (97, 33445), (146, 33592), (156, 33643), (168, 33682), (176, 33724), (191, 33790), (198, 33805), (202, 33832), (206, 33847), (219, 33904), (226, 33958), (227, 33964), (233, 34003), (242, 34072), (246, 34093), (250, 34117), (261, 34192), (272, 34270), (287, 34336),

Gene: Doggs_27 Start: 22931, Stop: 24244, Start Num: 8

Candidate Starts for Doggs_27:

(1, 22643), (2, 22700), (3, 22715), (5, 22796), (6, 22799), (Start: 8 @22931 has 2 MA's), (15, 23015), (31, 23129), (82, 23282), (93, 23318), (94, 23321), (104, 23351), (124, 23405), (156, 23549), (198, 23705), (201, 23729), (213, 23777), (221, 23816), (226, 23858), (239, 23951), (240, 23960), (242,

23972), (285, 24221),

Gene: Dolores_26 Start: 22010, Stop: 23047, Start Num: 45

Candidate Starts for Dolores_26:

(11, 21839), (13, 21842), (Start: 45 @22010 has 19 MA's), (68, 22079), (72, 22085), (136, 22265), (143, 22286), (156, 22367), (163, 22394), (184, 22487), (216, 22595), (226, 22658), (235, 22733), (272, 22964),

Gene: Dorito_25 Start: 21473, Stop: 22513, Start Num: 45

Candidate Starts for Dorito_25:

(Start: 45 @21473 has 19 MA's), (68, 21542), (72, 21548), (136, 21728), (156, 21830), (162, 21854), (163, 21857), (167, 21866), (187, 21953), (216, 22058), (224, 22097), (226, 22121), (233, 22166), (239, 22214), (240, 22223), (242, 22235), (245, 22250), (265, 22373), (272, 22430),

Gene: Dre3_25 Start: 20758, Stop: 21861, Start Num: 27

Candidate Starts for Dre3_25:

(Start: 27 @20758 has 38 MA's), (33, 20794), (Start: 58 @20881 has 2 MA's), (106, 21019), (136, 21109), (146, 21160), (153, 21193), (156, 21211), (175, 21274), (190, 21322), (213, 21409), (231, 21514), (242, 21598), (243, 21604), (244, 21610), (248, 21637), (251, 21655), (264, 21736), (265, 21739), (266, 21742),

Gene: Easley_26 Start: 22020, Stop: 23057, Start Num: 45

Candidate Starts for Easley_26:

(11, 21849), (13, 21852), (Start: 45 @22020 has 19 MA's), (68, 22089), (72, 22095), (136, 22275), (143, 22296), (156, 22377), (163, 22404), (184, 22497), (216, 22605), (245, 22797), (265, 22917), (272, 22974),

Gene: EdmundFerry_33 Start: 29906, Stop: 31186, Start Num: 12

Candidate Starts for EdmundFerry_33:

(10, 29873), (Start: 12 @29906 has 22 MA's), (28, 30035), (44, 30092), (Start: 54 @30125 has 3 MA's), (116, 30308), (122, 30320), (142, 30392), (156, 30482), (163, 30509), (169, 30533), (187, 30626), (203, 30686), (210, 30725), (213, 30737), (226, 30821), (229, 30833), (233, 30866), (241, 30929), (246, 30947), (272, 31115), (273, 31121), (283, 31160),

Gene: Egi03_33 Start: 28412, Stop: 29584, Start Num: 12

Candidate Starts for Egi03_33:

(Start: 12 @28412 has 22 MA's), (30, 28553), (37, 28571), (85, 28706), (105, 28772), (136, 28859), (156, 28961), (202, 29066), (226, 29192), (227, 29198), (242, 29306), (246, 29324), (284, 29549),

Gene: ElJefes_24 Start: 20753, Stop: 21745, Start Num: 65

Candidate Starts for ElJefes_24:

(Start: 65 @20753 has 7 MA's), (119, 20900), (130, 20942), (133, 20948), (135, 20951), (139, 20969), (150, 21026), (156, 21059), (168, 21098), (188, 21188), (194, 21197), (212, 21266), (217, 21290), (226, 21350), (235, 21425), (242, 21464), (246, 21485), (247, 21488), (265, 21605), (270, 21638), (275, 21674), (284, 21710), (285, 21716), (288, 21728),

Gene: Elliott_25 Start: 20517, Stop: 21614, Start Num: 27

Candidate Starts for Elliott_25:

(Start: 27 @20517 has 38 MA's), (29, 20535), (Start: 58 @20640 has 2 MA's), (126, 20838), (156, 20970), (159, 20979), (163, 20997), (175, 21033), (199, 21093), (204, 21123), (231, 21273), (234, 21312), (242, 21357), (246, 21375), (258, 21456), (268, 21516), (273, 21552), (281, 21582), (285, 21603),

Gene: Elle_31 Start: 21644, Stop: 22750, Start Num: 34

Candidate Starts for Elle_31:

(Start: 34 @21644 has 1 MA's), (57, 21725), (96, 21833), (123, 21905), (126, 21923), (135, 21947), (137, 21956), (144, 21980), (167, 22097), (177, 22148), (205, 22253), (212, 22280), (215, 22298), (216, 22301), (224, 22340), (226, 22364), (231, 22388), (236, 22442), (242, 22478), (265, 22613), (284, 22721),

Gene: Emalyn_24 Start: 19777, Stop: 20889, Start Num: 27

Candidate Starts for Emalyn_24:

(18, 19708), (Start: 27 @19777 has 38 MA's), (Start: 58 @19900 has 2 MA's), (126, 20098), (156, 20230), (159, 20239), (191, 20356), (200, 20386), (205, 20401), (212, 20440), (223, 20497), (231, 20548), (242, 20632), (246, 20650), (251, 20683), (264, 20764), (265, 20767), (266, 20770), (285, 20878),

Gene: Fairfaxidum_28 Start: 23698, Stop: 24678, Start Num: 66

Candidate Starts for Fairfaxidum_28:

(47, 23638), (Start: 66 @23698 has 8 MA's), (143, 23905), (156, 23986), (157, 23989), (163, 24013), (180, 24082), (187, 24109), (215, 24217), (216, 24220), (219, 24229), (226, 24283), (229, 24295), (235, 24358), (250, 24439), (253, 24469), (272, 24589), (289, 24661), (290, 24670),

Gene: Feastonyeet_24 Start: 20320, Stop: 21312, Start Num: 65

Candidate Starts for Feastonyeet_24:

(Start: 65 @20320 has 7 MA's), (119, 20467), (130, 20509), (133, 20515), (135, 20518), (139, 20536), (150, 20593), (156, 20626), (188, 20755), (194, 20764), (212, 20833), (217, 20857), (226, 20917), (235, 20992), (246, 21052), (247, 21055), (265, 21172), (270, 21205), (275, 21241), (284, 21277), (285, 21283), (288, 21295),

Gene: FelixTres_29 Start: 28060, Stop: 29172, Start Num: 23

Candidate Starts for FelixTres_29:

(Start: 23 @28060 has 16 MA's), (53, 28174), (67, 28225), (73, 28234), (Start: 81 @28249 has 1 MA's), (87, 28264), (109, 28330), (144, 28444), (146, 28465), (156, 28516), (168, 28555), (178, 28579), (195, 28639), (219, 28741), (225, 28777), (226, 28792), (242, 28903), (245, 28921), (251, 28957),

Gene: Fresco_27 Start: 26078, Stop: 27217, Start Num: 23

Candidate Starts for Fresco_27:

(Start: 23 @26078 has 16 MA's), (25, 26087), (36, 26135), (48, 26174), (53, 26192), (76, 26261), (101, 26330), (103, 26339), (144, 26465), (156, 26537), (163, 26564), (164, 26567), (179, 26639), (198, 26693), (211, 26756), (217, 26783), (219, 26789), (226, 26840), (239, 26930), (272, 27143), (285, 27200), (286, 27206), (287, 27209),

Gene: Fribs8_26 Start: 21343, Stop: 22440, Start Num: 27

Candidate Starts for Fribs8_26:

(Start: 27 @21343 has 38 MA's), (29, 21361), (Start: 58 @21466 has 2 MA's), (106, 21604), (136, 21694), (140, 21709), (153, 21778), (156, 21796), (161, 21817), (162, 21820), (212, 21985), (223, 22042), (227, 22075), (237, 22144), (242, 22177), (244, 22189), (246, 22201), (251, 22234), (256, 22273), (265, 22318), (285, 22429),

Gene: Frizzle_25 Start: 21406, Stop: 22404, Start Num: 58

Candidate Starts for Frizzle_25:

(Start: 58 @21406 has 2 MA's), (80, 21466), (88, 21487), (100, 21523), (116, 21568), (126, 21595), (134, 21619), (140, 21640), (150, 21694), (159, 21736), (192, 21868), (212, 21952), (226, 22036), (242, 22144), (264, 22276), (265, 22279), (272, 22333), (273, 22339), (281, 22369),

Gene: Fugax_35 Start: 28934, Stop: 30106, Start Num: 12

Candidate Starts for Fugax_35:

(Start: 12 @28934 has 22 MA's), (30, 29075), (37, 29093), (85, 29228), (105, 29294), (136, 29381), (156, 29483), (202, 29588), (226, 29714), (227, 29720), (242, 29828), (246, 29846), (284, 30071),

Gene: GTE2_22 Start: 19853, Stop: 20965, Start Num: 27

Candidate Starts for GTE2_22:

(Start: 27 @19853 has 38 MA's), (29, 19871), (Start: 58 @19976 has 2 MA's), (102, 20099), (132, 20195), (153, 20288), (156, 20306), (161, 20327), (212, 20516), (216, 20537), (231, 20624), (242, 20708), (246, 20726), (251, 20759), (256, 20798), (264, 20840), (265, 20843), (266, 20846), (285, 20954),

Gene: GTE6_34 Start: 30398, Stop: 31678, Start Num: 12

Candidate Starts for GTE6_34:

(Start: 12 @30398 has 22 MA's), (28, 30527), (Start: 54 @30617 has 3 MA's), (116, 30800), (122, 30812), (142, 30884), (156, 30974), (163, 31001), (169, 31025), (187, 31118), (203, 31178), (210, 31217), (213, 31229), (226, 31313), (229, 31325), (233, 31358), (241, 31421), (272, 31607), (283, 31652),

Gene: Ghobes_26 Start: 21406, Stop: 22404, Start Num: 58

Candidate Starts for Ghobes_26:

(Start: 58 @21406 has 2 MA's), (80, 21466), (88, 21487), (100, 21523), (116, 21568), (126, 21595), (134, 21619), (140, 21640), (150, 21694), (159, 21736), (168, 21772), (192, 21868), (212, 21952), (226, 22036), (242, 22144), (264, 22276), (272, 22333), (273, 22339), (281, 22369),

Gene: Gibbous_25 Start: 20758, Stop: 21861, Start Num: 27

Candidate Starts for Gibbous_25:

(Start: 27 @20758 has 38 MA's), (33, 20794), (Start: 58 @20881 has 2 MA's), (106, 21019), (136, 21109), (146, 21160), (153, 21193), (156, 21211), (175, 21274), (190, 21322), (213, 21409), (231, 21514), (242, 21598), (243, 21604), (244, 21610), (248, 21637), (251, 21655), (264, 21736), (265, 21739), (266, 21742),

Gene: Goib_30 Start: 22610, Stop: 23578, Start Num: 49

Candidate Starts for Goib_30:

(14, 22433), (39, 22577), (46, 22601), (Start: 49 @22610 has 3 MA's), (Start: 54 @22625 has 3 MA's), (111, 22796), (114, 22805), (135, 22865), (153, 22958), (156, 22976), (167, 23012), (168, 23015), (182, 23030), (218, 23138), (220, 23150), (229, 23216), (233, 23249), (242, 23312), (249, 23354), (250, 23360), (252, 23387), (253, 23390), (256, 23408), (257, 23411), (263, 23450), (266, 23456), (270, 23489), (285, 23567),

Gene: GoldHunter_26 Start: 20518, Stop: 21615, Start Num: 27

Candidate Starts for GoldHunter_26:

(Start: 27 @20518 has 38 MA's), (29, 20536), (Start: 58 @20641 has 2 MA's), (126, 20839), (153, 20953), (156, 20971), (159, 20980), (163, 20998), (175, 21034), (199, 21094), (204, 21124), (231, 21274), (234, 21313), (242, 21358), (246, 21376), (250, 21400), (258, 21457), (268, 21517), (273, 21553), (281, 21583), (285, 21604),

Gene: Gudmit_25 Start: 20321, Stop: 21364, Start Num: 45

Candidate Starts for Gudmit_25:

(9, 20090), (18, 20186), (19, 20189), (Start: 45 @20321 has 19 MA's), (47, 20327), (62, 20372), (70, 20396), (75, 20405), (89, 20444), (136, 20579), (144, 20609), (156, 20681), (163, 20708), (184, 20801), (216, 20909), (226, 20972), (233, 21017), (235, 21047), (245, 21101), (272, 21278),

Gene: Gustav_25 Start: 19979, Stop: 21202, Start Num: 16

Candidate Starts for Gustav_25:

(Start: 16 @19979 has 4 MA's), (21, 20021), (26, 20051), (31, 20087), (51, 20150), (60, 20183), (71, 20216), (86, 20252), (99, 20294), (114, 20339), (115, 20342), (118, 20348), (132, 20399), (145, 20444), (148, 20465), (156, 20513), (213, 20741), (216, 20759), (228, 20831), (237, 20897), (240, 20918), (242, 20930), (246, 20957), (256, 21029), (260, 21053), (264, 21071), (272, 21131),

Gene: Hans_37 Start: 31512, Stop: 32516, Start Num: 32

Candidate Starts for Hans_37:

(Start: 32 @31512 has 22 MA's), (67, 31626), (78, 31647), (97, 31692), (110, 31728), (153, 31875), (156, 31893), (202, 31998), (219, 32070), (226, 32124), (233, 32169), (242, 32238), (246, 32259), (250, 32283), (261, 32358), (272, 32436), (287, 32502),

Gene: HippoPololi_27 Start: 21407, Stop: 22510, Start Num: 27

Candidate Starts for HippoPololi_27:

(Start: 27 @21407 has 38 MA's), (33, 21443), (Start: 58 @21530 has 2 MA's), (74, 21575), (79, 21587), (80, 21590), (102, 21653), (106, 21668), (114, 21689), (126, 21728), (136, 21758), (153, 21842), (156, 21860), (166, 21896), (175, 21923), (190, 21971), (213, 22058), (231, 22163), (242, 22247), (243, 22253), (244, 22259), (248, 22286), (249, 22289), (251, 22304), (264, 22385), (266, 22391),

Gene: Horseradish_26 Start: 20064, Stop: 21086, Start Num: 27

Candidate Starts for Horseradish_26:

(18, 19995), (Start: 27 @20064 has 38 MA's), (29, 20082), (Start: 58 @20187 has 2 MA's), (153, 20499), (156, 20517), (159, 20526), (165, 20550), (199, 20565), (223, 20694), (231, 20745), (233, 20766), (242, 20829), (246, 20847), (251, 20880), (260, 20943), (278, 21039),

Gene: Hortense_26 Start: 22619, Stop: 23656, Start Num: 45

Candidate Starts for Hortense_26:

(Start: 45 @22619 has 19 MA's), (68, 22688), (72, 22694), (136, 22874), (143, 22895), (156, 22976), (163, 23003), (184, 23096), (216, 23204), (226, 23267), (235, 23342), (272, 23573),

Gene: Howe_26 Start: 22619, Stop: 23656, Start Num: 45

Candidate Starts for Howe_26:

(Start: 45 @22619 has 19 MA's), (68, 22688), (72, 22694), (136, 22874), (143, 22895), (156, 22976), (163, 23003), (184, 23096), (216, 23204), (226, 23267), (235, 23342), (272, 23573),

Gene: Huffy_31 Start: 22562, Stop: 23509, Start Num: 54

Candidate Starts for Huffy_31:

(Start: 54 @22562 has 3 MA's), (111, 22733), (135, 22802), (153, 22895), (156, 22913), (211, 23045), (214, 23060), (220, 23087), (229, 23150), (233, 23183), (236, 23216), (241, 23240), (257, 23345), (266, 23390), (270, 23420), (274, 23447), (276, 23456), (285, 23498),

Gene: Inspectinfecti_36 Start: 31874, Stop: 32962, Start Num: 32

Candidate Starts for Inspectinfecti_36:

(Start: 32 @31874 has 22 MA's), (67, 31988), (78, 32009), (97, 32054), (110, 32090), (156, 32255), (168, 32294), (176, 32336), (198, 32417), (202, 32444), (206, 32459), (226, 32570), (233, 32615), (239, 32663), (242, 32684), (246, 32705), (250, 32729), (272, 32882), (287, 32948),

Gene: JellyBelly_27 Start: 26004, Stop: 27155, Start Num: 23

Candidate Starts for JellyBelly_27:

(Start: 23 @26004 has 16 MA's), (36, 26064), (87, 26214), (101, 26259), (103, 26268), (108, 26280), (112, 26289), (144, 26394), (156, 26466), (190, 26613), (211, 26697), (212, 26700), (215, 26718), (217, 26724), (219, 26730), (224, 26757), (225, 26766), (226, 26781), (248, 26925), (249, 26928),

(250, 26934), (272, 27084), (285, 27141), (286, 27147),

Gene: JohnPork_33 Start: 28253, Stop: 29425, Start Num: 12

Candidate Starts for JohnPork_33:

(Start: 12 @28253 has 22 MA's), (30, 28394), (37, 28412), (85, 28547), (105, 28613), (113, 28631), (128, 28682), (136, 28700), (156, 28802), (202, 28907), (226, 29033), (227, 29039), (242, 29147), (246, 29165), (284, 29390),

Gene: KappaFarmDelta_30 Start: 23868, Stop: 24845, Start Num: 66

Candidate Starts for KappaFarmDelta_30:

(47, 23808), (Start: 66 @23868 has 8 MA's), (98, 23949), (Start: 107 @23982 has 1 MA's), (120, 24009), (143, 24075), (152, 24132), (156, 24156), (180, 24252), (215, 24387), (216, 24390), (226, 24453), (233, 24498), (242, 24567), (247, 24588), (272, 24759), (284, 24810),

Gene: Kiko_28 Start: 22114, Stop: 23412, Start Num: 8

Candidate Starts for Kiko_28:

(2, 21883), (3, 21898), (4, 21934), (6, 21982), (Start: 8 @22114 has 2 MA's), (15, 22198), (17, 22207), (31, 22309), (82, 22462), (125, 22594), (Start: 127 @22600 has 1 MA's), (156, 22729), (180, 22825), (184, 22849), (187, 22852), (215, 22957), (216, 22960), (226, 23023), (247, 23158), (265, 23272), (272, 23329),

Gene: Kwekel_34 Start: 29835, Stop: 31115, Start Num: 12

Candidate Starts for Kwekel_34:

(Start: 12 @29835 has 22 MA's), (28, 29964), (Start: 54 @30054 has 3 MA's), (116, 30237), (122, 30249), (142, 30321), (156, 30411), (163, 30438), (169, 30462), (187, 30555), (203, 30615), (210, 30654), (213, 30666), (226, 30750), (229, 30762), (233, 30795), (241, 30858), (242, 30864), (272, 31044), (273, 31050), (283, 31089),

Gene: Leonard_35 Start: 31510, Stop: 32598, Start Num: 32

Candidate Starts for Leonard_35:

(Start: 32 @31510 has 22 MA's), (67, 31624), (78, 31645), (105, 31714), (110, 31726), (156, 31891), (168, 31930), (176, 31972), (198, 32053), (202, 32080), (206, 32095), (219, 32152), (226, 32206), (233, 32251), (242, 32320), (246, 32341), (250, 32365), (261, 32440), (272, 32518), (287, 32584),

Gene: Ligma_27 Start: 26078, Stop: 27217, Start Num: 23

Candidate Starts for Ligma_27:

(Start: 23 @26078 has 16 MA's), (25, 26087), (36, 26135), (48, 26174), (53, 26192), (76, 26261), (101, 26330), (103, 26339), (144, 26465), (156, 26537), (163, 26564), (164, 26567), (179, 26639), (198, 26693), (211, 26756), (217, 26783), (219, 26789), (226, 26840), (239, 26930), (272, 27143), (285, 27200), (286, 27206), (287, 27209),

Gene: Lilbeanie_32 Start: 26757, Stop: 27755, Start Num: 32

Candidate Starts for Lilbeanie_32:

(Start: 32 @26757 has 22 MA's), (67, 26865), (69, 26868), (74, 26877), (97, 26931), (102, 26943), (105, 26955), (118, 26985), (153, 27114), (156, 27132), (181, 27198), (182, 27204), (202, 27234), (226, 27360), (235, 27435), (246, 27495), (249, 27513), (272, 27669),

Gene: MScarn_27 Start: 20153, Stop: 21250, Start Num: 27

Candidate Starts for MScarn_27:

(18, 20084), (Start: 27 @20153 has 38 MA's), (29, 20171), (Start: 58 @20276 has 2 MA's), (128, 20483), (153, 20588), (156, 20606), (159, 20615), (174, 20669), (199, 20729), (223, 20858), (231, 20909), (242, 20993), (246, 21011), (251, 21044), (259, 21095), (260, 21107), (278, 21203), (285, 21239),

Gene: MaVan_27 Start: 21488, Stop: 22621, Start Num: 27

Candidate Starts for MaVan_27:

(Start: 27 @21488 has 38 MA's), (Start: 58 @21611 has 2 MA's), (106, 21749), (131, 21827), (136, 21839), (140, 21854), (153, 21923), (156, 21941), (162, 21965), (171, 22001), (190, 22082), (212, 22166), (242, 22358), (244, 22370), (246, 22382), (251, 22415), (256, 22454), (265, 22499), (285, 22610),

Gene: MakoManhole_29 Start: 28075, Stop: 29187, Start Num: 23

Candidate Starts for MakoManhole_29:

(Start: 23 @28075 has 16 MA's), (53, 28189), (67, 28240), (73, 28249), (Start: 81 @28264 has 1 MA's), (87, 28279), (109, 28345), (144, 28459), (146, 28480), (156, 28531), (168, 28570), (178, 28594), (195, 28654), (219, 28756), (225, 28792), (226, 28807), (242, 28918), (245, 28936), (251, 28972),

Gene: Malvina_27 Start: 21446, Stop: 22513, Start Num: 33

Candidate Starts for Malvina_27:

(Start: 27 @21410 has 38 MA's), (33, 21446), (Start: 58 @21533 has 2 MA's), (74, 21578), (79, 21590), (80, 21593), (102, 21656), (106, 21671), (114, 21692), (126, 21731), (136, 21761), (153, 21845), (156, 21863), (166, 21899), (175, 21926), (190, 21974), (213, 22061), (231, 22166), (242, 22250), (243, 22256), (244, 22262), (248, 22289), (249, 22292), (251, 22307), (264, 22388), (266, 22394),

Gene: Mariokart_27 Start: 26000, Stop: 27151, Start Num: 23

Candidate Starts for Mariokart_27:

(Start: 23 @26000 has 16 MA's), (36, 26060), (87, 26210), (101, 26255), (103, 26264), (108, 26276), (112, 26285), (144, 26390), (156, 26462), (190, 26609), (211, 26693), (212, 26696), (215, 26714), (217, 26720), (219, 26726), (224, 26753), (225, 26762), (226, 26777), (248, 26921), (249, 26924), (250, 26930), (272, 27080), (285, 27137), (286, 27143),

Gene: McDazzle_24 Start: 20747, Stop: 21739, Start Num: 65

Candidate Starts for McDazzle_24:

(Start: 65 @20747 has 7 MA's), (119, 20894), (130, 20936), (133, 20942), (135, 20945), (139, 20963), (150, 21020), (156, 21053), (168, 21092), (188, 21182), (194, 21191), (212, 21260), (217, 21284), (226, 21344), (235, 21419), (242, 21458), (246, 21479), (247, 21482), (265, 21599), (270, 21632), (275, 21668), (284, 21704), (285, 21710), (288, 21722),

Gene: Mcklovin_26 Start: 24788, Stop: 25825, Start Num: 45

Candidate Starts for Mcklovin_26:

(11, 24617), (13, 24620), (Start: 45 @24788 has 19 MA's), (68, 24857), (72, 24863), (136, 25043), (143, 25064), (156, 25145), (163, 25172), (184, 25265), (216, 25373), (226, 25436), (235, 25511), (272, 25742),

Gene: MelBins_36 Start: 31659, Stop: 32747, Start Num: 32

Candidate Starts for MelBins_36:

(Start: 32 @31659 has 22 MA's), (67, 31773), (78, 31794), (97, 31839), (105, 31863), (110, 31875), (156, 32040), (168, 32079), (176, 32121), (198, 32202), (202, 32229), (206, 32244), (226, 32355), (233, 32400), (239, 32448), (242, 32469), (246, 32490), (250, 32514), (272, 32667), (287, 32733),

Gene: MichaelScott_26 Start: 22391, Stop: 23428, Start Num: 45

Candidate Starts for MichaelScott_26:

(11, 22220), (13, 22223), (Start: 45 @22391 has 19 MA's), (68, 22460), (72, 22466), (136, 22646), (143, 22667), (156, 22748), (163, 22775), (184, 22868), (216, 22976), (226, 23039), (235, 23114), (272, 23345),

Gene: Morrissey_26 Start: 20856, Stop: 22073, Start Num: 16

Candidate Starts for Morrissey_26:

(Start: 16 @20856 has 4 MA's), (Start: 27 @20922 has 38 MA's), (31, 20955), (51, 21018), (86, 21120), (114, 21207), (115, 21210), (118, 21216), (145, 21312), (148, 21333), (156, 21381), (212, 21609), (213, 21612), (228, 21702), (237, 21768), (240, 21789), (242, 21801), (246, 21828), (252, 21879), (256, 21900), (260, 21924), (264, 21942), (277, 22020),

Gene: MossRose_29 Start: 28054, Stop: 29166, Start Num: 23

Candidate Starts for MossRose_29:

(Start: 23 @28054 has 16 MA's), (53, 28168), (67, 28219), (73, 28228), (Start: 81 @28243 has 1 MA's), (87, 28258), (109, 28324), (144, 28438), (146, 28459), (156, 28510), (168, 28549), (178, 28573), (195, 28633), (219, 28735), (225, 28771), (226, 28786), (242, 28897), (245, 28915), (251, 28951),

Gene: MunkgeeRoachy_25 Start: 20565, Stop: 21695, Start Num: 27

Candidate Starts for MunkgeeRoachy_25:

(Start: 27 @20565 has 38 MA's), (29, 20583), (Start: 58 @20688 has 2 MA's), (126, 20886), (153, 21000), (156, 21018), (159, 21027), (174, 21081), (190, 21162), (199, 21174), (204, 21204), (231, 21354), (242, 21438), (246, 21456), (251, 21489), (258, 21537), (260, 21552), (278, 21648), (285, 21684),

Gene: Murp_29 Start: 23645, Stop: 24622, Start Num: 66

Candidate Starts for Murp_29:

(47, 23585), (Start: 66 @23645 has 8 MA's), (98, 23726), (Start: 107 @23759 has 1 MA's), (120, 23786), (132, 23825), (143, 23852), (152, 23909), (156, 23933), (212, 24146), (215, 24164), (216, 24167), (219, 24176), (226, 24230), (233, 24275), (242, 24344), (270, 24515), (272, 24536), (284, 24587),

Gene: NHagos_27 Start: 26589, Stop: 27701, Start Num: 23

Candidate Starts for NHagos_27:

(Start: 23 @26589 has 16 MA's), (39, 26658), (Start: 49 @26691 has 3 MA's), (53, 26703), (59, 26727), (67, 26754), (Start: 81 @26778 has 1 MA's), (87, 26793), (109, 26859), (144, 26973), (150, 27012), (178, 27111), (195, 27171), (213, 27246), (218, 27270), (219, 27273), (225, 27309), (226, 27324), (229, 27336), (233, 27369), (242, 27435), (251, 27489), (285, 27687),

Gene: Natkenzie_37 Start: 33084, Stop: 34160, Start Num: 32

Candidate Starts for Natkenzie_37:

(7, 32790), (22, 33018), (Start: 32 @33084 has 22 MA's), (67, 33192), (90, 33240), (97, 33258), (146, 33405), (149, 33417), (156, 33456), (168, 33495), (176, 33537), (191, 33603), (198, 33618), (202, 33645), (206, 33660), (226, 33771), (233, 33816), (235, 33846), (239, 33864), (242, 33885), (246, 33906), (250, 33930), (272, 34083), (287, 34149),

Gene: Nibbles_27 Start: 21488, Stop: 22621, Start Num: 27

Candidate Starts for Nibbles_27:

(Start: 27 @21488 has 38 MA's), (29, 21506), (Start: 58 @21611 has 2 MA's), (102, 21734), (106, 21749), (131, 21827), (136, 21839), (140, 21854), (153, 21923), (156, 21941), (162, 21965), (171, 22001), (190, 22082), (212, 22166), (242, 22358), (244, 22370), (246, 22382), (251, 22415), (256, 22454), (265, 22499), (285, 22610),

Gene: Nina_26 Start: 21560, Stop: 22657, Start Num: 27

Candidate Starts for Nina_26:

(Start: 27 @21560 has 38 MA's), (29, 21578), (Start: 58 @21683 has 2 MA's), (126, 21881), (156, 22013), (159, 22022), (163, 22040), (175, 22076), (199, 22136), (204, 22166), (231, 22316), (234, 22355), (242, 22400), (246, 22418), (250, 22442), (258, 22499), (268, 22559), (273, 22595), (281,

22625), (285, 22646),

Gene: Oregano_26 Start: 22056, Stop: 23096, Start Num: 45

Candidate Starts for Oregano_26:

(Start: 45 @22056 has 19 MA's), (68, 22125), (72, 22131), (136, 22311), (143, 22332), (144, 22341), (156, 22413), (163, 22440), (184, 22533), (216, 22641), (226, 22704), (242, 22818), (265, 22956), (272, 23013),

Gene: PCoral7_29 Start: 23615, Stop: 24595, Start Num: 66

Candidate Starts for PCoral7_29:

(47, 23555), (Start: 66 @23615 has 8 MA's), (Start: 107 @23726 has 1 MA's), (143, 23822), (150, 23870), (156, 23903), (163, 23930), (180, 23999), (184, 24023), (187, 24026), (212, 24116), (215, 24134), (216, 24137), (226, 24200), (235, 24275), (261, 24431), (272, 24506), (289, 24578), (290, 24587),

Gene: Petra_30 Start: 23485, Stop: 24351, Start Num: 107

Candidate Starts for Petra_30:

(47, 23311), (Start: 66 @23371 has 8 MA's), (98, 23452), (Start: 107 @23485 has 1 MA's), (120, 23512), (132, 23551), (143, 23578), (156, 23659), (163, 23686), (167, 23695), (180, 23755), (184, 23779), (187, 23782), (213, 23875), (215, 23890), (216, 23893), (226, 23956), (229, 23968), (233, 24001), (235, 24031), (261, 24187), (270, 24241), (272, 24262),

Gene: Phauci_28 Start: 28099, Stop: 29187, Start Num: 32

Candidate Starts for Phauci_28:

(Start: 32 @28099 has 22 MA's), (67, 28213), (78, 28234), (105, 28303), (110, 28315), (156, 28480), (168, 28519), (176, 28561), (198, 28642), (202, 28669), (206, 28684), (226, 28795), (233, 28840), (239, 28888), (242, 28909), (246, 28930), (250, 28954), (261, 29029), (272, 29107), (287, 29173),

Gene: Phinally_35 Start: 31507, Stop: 32595, Start Num: 32

Candidate Starts for Phinally_35:

(Start: 32 @31507 has 22 MA's), (67, 31621), (78, 31642), (105, 31711), (110, 31723), (156, 31888), (168, 31927), (176, 31969), (198, 32050), (202, 32077), (206, 32092), (219, 32149), (226, 32203), (233, 32248), (242, 32317), (246, 32338), (250, 32362), (261, 32437), (272, 32515), (287, 32581),

Gene: PhriskyACE_25 Start: 21473, Stop: 22513, Start Num: 45

Candidate Starts for PhriskyACE_25:

(Start: 45 @21473 has 19 MA's), (68, 21542), (72, 21548), (136, 21728), (156, 21830), (162, 21854), (163, 21857), (167, 21866), (187, 21953), (216, 22058), (224, 22097), (226, 22121), (233, 22166), (239, 22214), (240, 22223), (242, 22235), (245, 22250), (265, 22373), (272, 22430),

Gene: PinkCoffee_35 Start: 28943, Stop: 30115, Start Num: 12

Candidate Starts for PinkCoffee_35:

(Start: 12 @28943 has 22 MA's), (30, 29084), (37, 29102), (85, 29237), (105, 29303), (136, 29390), (156, 29492), (202, 29597), (226, 29723), (227, 29729), (242, 29837), (246, 29855), (284, 30080),

Gene: Portcullis_33 Start: 28253, Stop: 29425, Start Num: 12

Candidate Starts for Portcullis_33:

(Start: 12 @28253 has 22 MA's), (30, 28394), (37, 28412), (85, 28547), (105, 28613), (113, 28631), (128, 28682), (136, 28700), (156, 28802), (202, 28907), (226, 29033), (227, 29039), (242, 29147), (246, 29165), (284, 29390),

Gene: PotPie_25 Start: 21139, Stop: 22131, Start Num: 65

Candidate Starts for PotPie_25:

(Start: 65 @21139 has 7 MA's), (119, 21286), (130, 21328), (133, 21334), (135, 21337), (139, 21355), (150, 21412), (156, 21445), (188, 21574), (194, 21583), (212, 21652), (217, 21676), (226, 21736), (235, 21811), (246, 21871), (247, 21874), (265, 21991), (270, 22024), (275, 22060), (284, 22096), (285, 22102), (288, 22114),

Gene: PrincePatrick_28 Start: 23694, Stop: 24674, Start Num: 66

Candidate Starts for PrincePatrick_28:

(47, 23634), (Start: 66 @23694 has 8 MA's), (Start: 107 @23805 has 1 MA's), (143, 23901), (150, 23949), (156, 23982), (163, 24009), (167, 24018), (180, 24078), (184, 24102), (187, 24105), (212, 24195), (215, 24213), (216, 24216), (226, 24279), (235, 24354), (261, 24510), (272, 24585), (284, 24636),

Gene: PsychoKiller_25 Start: 20517, Stop: 21614, Start Num: 27

Candidate Starts for PsychoKiller_25:

(Start: 27 @20517 has 38 MA's), (29, 20535), (Start: 58 @20640 has 2 MA's), (126, 20838), (156, 20970), (159, 20979), (163, 20997), (175, 21033), (199, 21093), (204, 21123), (231, 21273), (234, 21312), (242, 21357), (246, 21375), (258, 21456), (268, 21516), (273, 21552), (281, 21582), (285, 21603),

Gene: Pumpkiney_38 Start: 30407, Stop: 31483, Start Num: 32

Candidate Starts for Pumpkiney_38:

(Start: 32 @30407 has 22 MA's), (67, 30515), (90, 30563), (97, 30581), (146, 30728), (149, 30740), (156, 30779), (168, 30818), (176, 30860), (191, 30926), (198, 30941), (202, 30968), (206, 30983), (219, 31040), (226, 31094), (233, 31139), (239, 31187), (242, 31208), (246, 31229), (250, 31253), (261, 31328), (272, 31406), (273, 31412), (287, 31472),

Gene: Puppies_25 Start: 19683, Stop: 20918, Start Num: 16

Candidate Starts for Puppies_25:

(Start: 16 @19683 has 4 MA's), (31, 19794), (38, 19812), (51, 19857), (64, 19902), (86, 19959), (95, 19989), (99, 20001), (122, 20064), (Start: 127 @20088 has 1 MA's), (141, 20133), (151, 20187), (154, 20202), (155, 20205), (158, 20220), (173, 20280), (199, 20376), (207, 20424), (208, 20427), (244, 20658), (254, 20733), (268, 20817), (283, 20892), (284, 20898),

Gene: Quasar_25 Start: 21126, Stop: 22223, Start Num: 27

Candidate Starts for Quasar_25:

(Start: 27 @21126 has 38 MA's), (29, 21144), (Start: 58 @21249 has 2 MA's), (126, 21447), (153, 21561), (156, 21579), (159, 21588), (163, 21606), (175, 21642), (199, 21702), (204, 21732), (231, 21882), (234, 21921), (242, 21966), (246, 21984), (250, 22008), (258, 22065), (268, 22125), (273, 22161), (281, 22191), (285, 22212),

Gene: RADical_26 Start: 20518, Stop: 21615, Start Num: 27

Candidate Starts for RADical_26:

(Start: 27 @20518 has 38 MA's), (29, 20536), (Start: 58 @20641 has 2 MA's), (126, 20839), (153, 20953), (156, 20971), (159, 20980), (163, 20998), (175, 21034), (199, 21094), (204, 21124), (231, 21274), (234, 21313), (242, 21358), (246, 21376), (250, 21400), (258, 21457), (268, 21517), (273, 21553), (281, 21583), (285, 21604),

Gene: RSchmailzl_26 Start: 20661, Stop: 21758, Start Num: 27

Candidate Starts for RSchmailzl_26:

(Start: 27 @20661 has 38 MA's), (29, 20679), (Start: 58 @20784 has 2 MA's), (126, 20982), (156, 21114), (159, 21123), (161, 21135), (163, 21141), (175, 21177), (199, 21237), (231, 21417), (234, 21456), (242, 21501), (246, 21519), (250, 21543), (258, 21600), (268, 21660), (273, 21696), (281, 21726), (285, 21747),

Gene: RedBaron_27 Start: 20561, Stop: 21658, Start Num: 27

Candidate Starts for RedBaron_27:

(Start: 27 @20561 has 38 MA's), (29, 20579), (Start: 58 @20684 has 2 MA's), (126, 20882), (156, 21014), (159, 21023), (163, 21041), (175, 21077), (199, 21137), (231, 21317), (234, 21356), (242, 21401), (246, 21419), (250, 21443), (258, 21500), (268, 21560), (273, 21596), (281, 21626), (285, 21647),

Gene: Rizz_29 Start: 22391, Stop: 23428, Start Num: 45

Candidate Starts for Rizz_29:

(11, 22220), (13, 22223), (Start: 45 @22391 has 19 MA's), (68, 22460), (72, 22466), (136, 22646), (143, 22667), (156, 22748), (163, 22775), (184, 22868), (216, 22976), (226, 23039), (235, 23114), (272, 23345),

Gene: RoadKill_32 Start: 29401, Stop: 30681, Start Num: 12

Candidate Starts for RoadKill_32:

(Start: 12 @29401 has 22 MA's), (28, 29530), (44, 29587), (Start: 54 @29620 has 3 MA's), (116, 29803), (122, 29815), (142, 29887), (156, 29977), (163, 30004), (169, 30028), (187, 30121), (203, 30181), (210, 30220), (213, 30232), (226, 30316), (229, 30328), (233, 30361), (241, 30424), (246, 30442), (272, 30610), (273, 30616), (283, 30655),

Gene: RogerDodger_36 Start: 29082, Stop: 30254, Start Num: 12

Candidate Starts for RogerDodger_36:

(Start: 12 @29082 has 22 MA's), (30, 29223), (37, 29241), (85, 29376), (105, 29442), (136, 29529), (156, 29631), (202, 29736), (226, 29862), (227, 29868), (242, 29976), (246, 29994), (284, 30219),

Gene: Samman98_26 Start: 22025, Stop: 23065, Start Num: 45

Candidate Starts for Samman98_26:

(Start: 45 @22025 has 19 MA's), (68, 22094), (72, 22100), (136, 22280), (156, 22382), (162, 22406), (163, 22409), (167, 22418), (187, 22505), (216, 22610), (224, 22649), (226, 22673), (233, 22718), (239, 22766), (240, 22775), (242, 22787), (245, 22802), (265, 22925), (272, 22982),

Gene: Sampson_37 Start: 33029, Stop: 34105, Start Num: 32

Candidate Starts for Sampson_37:

(7, 32735), (22, 32963), (Start: 32 @33029 has 22 MA's), (67, 33137), (90, 33185), (97, 33203), (146, 33350), (149, 33362), (156, 33401), (168, 33440), (176, 33482), (191, 33548), (198, 33563), (202, 33590), (206, 33605), (226, 33716), (233, 33761), (235, 33791), (239, 33809), (242, 33830), (246, 33851), (250, 33875), (272, 34028), (287, 34094),

Gene: Sapo_25 Start: 21383, Stop: 22177, Start Num: 127

Candidate Starts for Sapo_25:

(Start: 127 @21383 has 1 MA's), (140, 21425), (147, 21461), (169, 21551), (182, 21626), (185, 21629), (212, 21722), (235, 21878), (242, 21917), (266, 22055), (269, 22085), (271, 22094), (281, 22142),

Gene: Scioto_37 Start: 33084, Stop: 34160, Start Num: 32

Candidate Starts for Scioto_37:

(7, 32790), (22, 33018), (Start: 32 @33084 has 22 MA's), (67, 33192), (90, 33240), (97, 33258), (146, 33405), (149, 33417), (156, 33456), (168, 33495), (176, 33537), (191, 33603), (198, 33618), (202, 33645), (206, 33660), (226, 33771), (233, 33816), (235, 33846), (239, 33864), (242, 33885), (246, 33906), (250, 33930), (272, 34083), (287, 34149),

Gene: Sekhmet_26 Start: 22385, Stop: 23425, Start Num: 45

Candidate Starts for Sekhmet_26:

(Start: 45 @22385 has 19 MA's), (68, 22454), (72, 22460), (136, 22640), (156, 22742), (162, 22766), (163, 22769), (167, 22778), (187, 22865), (216, 22970), (224, 23009), (226, 23033), (233, 23078), (239, 23126), (240, 23135), (242, 23147), (245, 23162), (265, 23285), (272, 23342),

Gene: SharkTale_33 Start: 29016, Stop: 30266, Start Num: 12

Candidate Starts for SharkTale_33:

(Start: 12 @29016 has 22 MA's), (Start: 27 @29130 has 38 MA's), (37, 29175), (42, 29196), (93, 29340), (105, 29376), (136, 29463), (156, 29565), (163, 29592), (198, 29727), (202, 29754), (212, 29796), (213, 29799), (216, 29817), (229, 29892), (235, 29955), (242, 29994), (285, 30243),

Gene: Shatter_27 Start: 26078, Stop: 27217, Start Num: 23

Candidate Starts for Shatter_27:

(Start: 23 @26078 has 16 MA's), (25, 26087), (36, 26135), (48, 26174), (53, 26192), (76, 26261), (101, 26330), (103, 26339), (144, 26465), (156, 26537), (163, 26564), (164, 26567), (179, 26639), (198, 26693), (211, 26756), (217, 26783), (219, 26789), (226, 26840), (239, 26930), (272, 27143), (285, 27200), (286, 27206), (287, 27209),

Gene: SheckWes_25 Start: 20283, Stop: 21275, Start Num: 65

Candidate Starts for SheckWes_25:

(Start: 65 @20283 has 7 MA's), (119, 20430), (130, 20472), (135, 20481), (139, 20499), (150, 20556), (156, 20589), (168, 20628), (188, 20718), (194, 20727), (212, 20796), (217, 20820), (226, 20880), (235, 20955), (246, 21015), (247, 21018), (265, 21135), (270, 21168), (275, 21204), (284, 21240), (285, 21246), (288, 21258),

Gene: Shinji_33 Start: 28194, Stop: 29366, Start Num: 12

Candidate Starts for Shinji_33:

(Start: 12 @28194 has 22 MA's), (30, 28335), (37, 28353), (85, 28488), (105, 28554), (113, 28572), (128, 28623), (136, 28641), (156, 28743), (202, 28848), (226, 28974), (227, 28980), (242, 29088), (246, 29106), (284, 29331),

Gene: Shlim410_26 Start: 22619, Stop: 23656, Start Num: 45

Candidate Starts for Shlim410_26:

(Start: 45 @22619 has 19 MA's), (68, 22688), (72, 22694), (136, 22874), (143, 22895), (156, 22976), (163, 23003), (184, 23096), (216, 23204), (226, 23267), (235, 23342), (272, 23573),

Gene: Sixsevenium_34 Start: 28127, Stop: 29377, Start Num: 12

Candidate Starts for Sixsevenium_34:

(Start: 12 @28127 has 22 MA's), (Start: 27 @28241 has 38 MA's), (37, 28286), (42, 28307), (93, 28451), (105, 28487), (136, 28574), (156, 28676), (163, 28703), (198, 28838), (202, 28865), (212, 28907), (213, 28910), (216, 28928), (229, 29003), (235, 29066), (242, 29105), (285, 29354),

Gene: SketchMex_24 Start: 20168, Stop: 21265, Start Num: 27

Candidate Starts for SketchMex_24:

(18, 20099), (Start: 27 @20168 has 38 MA's), (29, 20186), (Start: 58 @20291 has 2 MA's), (128, 20498), (153, 20603), (156, 20621), (159, 20630), (174, 20684), (199, 20744), (223, 20873), (231, 20924), (242, 21008), (246, 21026), (251, 21059), (259, 21110), (260, 21122), (278, 21218), (285, 21254),

Gene: Socotra_26 Start: 20517, Stop: 21614, Start Num: 27

Candidate Starts for Socotra_26:

(Start: 27 @20517 has 38 MA's), (29, 20535), (Start: 58 @20640 has 2 MA's), (126, 20838), (153, 20952), (156, 20970), (159, 20979), (163, 20997), (175, 21033), (199, 21093), (204, 21123), (231, 21273), (234, 21312), (242, 21357), (246, 21375), (250, 21399), (258, 21456), (268, 21516), (273,

21552), (281, 21582), (285, 21603),

Gene: Sopespian_25 Start: 20518, Stop: 21615, Start Num: 27

Candidate Starts for Sopespian_25:

(Start: 27 @20518 has 38 MA's), (29, 20536), (Start: 58 @20641 has 2 MA's), (126, 20839), (156, 20971), (159, 20980), (163, 20998), (175, 21034), (199, 21094), (204, 21124), (231, 21274), (234, 21313), (242, 21358), (246, 21376), (250, 21400), (258, 21457), (268, 21517), (273, 21553), (281, 21583), (285, 21604),

Gene: Sour_31 Start: 30307, Stop: 31437, Start Num: 20

Candidate Starts for Sour_31:

(Start: 20 @30307 has 1 MA's), (40, 30400), (43, 30406), (77, 30496), (83, 30511), (110, 30577), (156, 30754), (180, 30850), (213, 30967), (216, 30985), (226, 31048), (240, 31150), (242, 31162), (245, 31177), (248, 31195), (260, 31276), (272, 31354), (284, 31405), (285, 31411),

Gene: Splinter_29 Start: 22610, Stop: 23578, Start Num: 49

Candidate Starts for Splinter_29:

(14, 22433), (39, 22577), (46, 22601), (Start: 49 @22610 has 3 MA's), (Start: 54 @22625 has 3 MA's), (111, 22796), (114, 22805), (135, 22865), (153, 22958), (156, 22976), (167, 23012), (168, 23015), (182, 23030), (218, 23138), (220, 23150), (229, 23216), (233, 23249), (242, 23312), (249, 23354), (250, 23360), (252, 23387), (253, 23390), (256, 23408), (257, 23411), (263, 23450), (266, 23456), (270, 23489), (285, 23567),

Gene: Starburst_26 Start: 20518, Stop: 21615, Start Num: 27

Candidate Starts for Starburst_26:

(Start: 27 @20518 has 38 MA's), (29, 20536), (Start: 58 @20641 has 2 MA's), (126, 20839), (153, 20953), (156, 20971), (159, 20980), (163, 20998), (175, 21034), (199, 21094), (204, 21124), (231, 21274), (234, 21313), (242, 21358), (246, 21376), (250, 21400), (258, 21457), (268, 21517), (273, 21553), (281, 21583), (285, 21604),

Gene: SteamedHams_27 Start: 20181, Stop: 21269, Start Num: 27

Candidate Starts for SteamedHams_27:

(26, 20178), (Start: 27 @20181 has 38 MA's), (29, 20199), (Start: 58 @20304 has 2 MA's), (102, 20427), (153, 20616), (156, 20634), (159, 20643), (161, 20655), (200, 20766), (212, 20820), (216, 20841), (231, 20928), (242, 21012), (246, 21030), (251, 21063), (260, 21126), (264, 21144), (265, 21147), (266, 21150), (273, 21207), (285, 21258),

Gene: SummitAcademy_25 Start: 20359, Stop: 21351, Start Num: 65

Candidate Starts for SummitAcademy_25:

(Start: 65 @20359 has 7 MA's), (119, 20506), (135, 20557), (139, 20575), (150, 20632), (156, 20665), (188, 20794), (194, 20803), (212, 20872), (217, 20896), (226, 20956), (235, 21031), (246, 21091), (247, 21094), (265, 21211), (270, 21244), (275, 21280), (284, 21316), (285, 21322), (288, 21334),

Gene: Survivors_27 Start: 21337, Stop: 22437, Start Num: 27

Candidate Starts for Survivors_27:

(Start: 27 @21337 has 38 MA's), (29, 21355), (Start: 58 @21460 has 2 MA's), (106, 21598), (131, 21676), (136, 21688), (140, 21703), (153, 21772), (156, 21790), (162, 21814), (212, 21982), (242, 22174), (245, 22195), (246, 22198), (251, 22231), (260, 22294), (264, 22312), (266, 22318), (285, 22426),

Gene: TZGordon_31 Start: 22485, Stop: 23432, Start Num: 54

Candidate Starts for TZGordon_31:

(Start: 54 @22485 has 3 MA's), (111, 22656), (135, 22725), (153, 22818), (156, 22836), (211, 22968), (214, 22983), (220, 23010), (229, 23073), (233, 23106), (236, 23139), (241, 23163), (257, 23268), (266, 23313), (270, 23343), (274, 23370), (276, 23379), (285, 23421),

Gene: Tardus_38 Start: 32448, Stop: 33524, Start Num: 32

Candidate Starts for Tardus_38:

(Start: 32 @32448 has 22 MA's), (67, 32556), (90, 32604), (97, 32622), (146, 32769), (149, 32781), (156, 32820), (168, 32859), (176, 32901), (191, 32967), (198, 32982), (202, 33009), (206, 33024), (219, 33081), (226, 33135), (233, 33180), (242, 33249), (246, 33270), (250, 33294), (261, 33369), (272, 33447), (287, 33513),

Gene: Tiamoceli_35 Start: 30734, Stop: 32014, Start Num: 12

Candidate Starts for Tiamoceli_35:

(Start: 12 @30734 has 22 MA's), (28, 30863), (Start: 54 @30953 has 3 MA's), (116, 31136), (122, 31148), (142, 31220), (156, 31310), (163, 31337), (167, 31352), (169, 31361), (187, 31454), (203, 31514), (213, 31565), (226, 31649), (229, 31661), (233, 31694), (241, 31757), (246, 31775), (266, 31892), (272, 31943), (283, 31988),

Gene: TinaLin_31 Start: 22732, Stop: 23730, Start Num: 52

Candidate Starts for TinaLin_31:

(50, 22729), (Start: 52 @22732 has 3 MA's), (103, 22879), (111, 22900), (129, 22957), (135, 22969), (156, 23080), (211, 23263), (226, 23356), (232, 23392), (233, 23401), (249, 23506), (250, 23512), (252, 23539), (253, 23542), (273, 23668), (279, 23686), (280, 23695), (285, 23719),

Gene: Toast_29 Start: 23615, Stop: 24595, Start Num: 66

Candidate Starts for Toast_29:

(47, 23555), (Start: 66 @23615 has 8 MA's), (Start: 107 @23726 has 1 MA's), (143, 23822), (150, 23870), (156, 23903), (163, 23930), (180, 23999), (184, 24023), (187, 24026), (212, 24116), (215, 24134), (216, 24137), (226, 24200), (235, 24275), (261, 24431), (272, 24506), (289, 24578), (290, 24587),

Gene: Tolls_27 Start: 20184, Stop: 21263, Start Num: 27

Candidate Starts for Tolls_27:

(26, 20181), (Start: 27 @20184 has 38 MA's), (29, 20202), (Start: 58 @20307 has 2 MA's), (102, 20430), (136, 20535), (153, 20619), (156, 20637), (162, 20661), (197, 20742), (200, 20760), (212, 20814), (231, 20922), (242, 21006), (246, 21024), (251, 21057), (260, 21120), (264, 21138), (265, 21141), (266, 21144), (273, 21201),

Gene: TraderJ_29 Start: 28060, Stop: 29157, Start Num: 23

Candidate Starts for TraderJ_29:

(Start: 23 @28060 has 16 MA's), (53, 28174), (73, 28234), (Start: 81 @28249 has 1 MA's), (87, 28264), (144, 28444), (150, 28483), (156, 28516), (178, 28573), (190, 28621), (195, 28633), (218, 28726), (219, 28729), (220, 28738), (225, 28765), (226, 28780), (227, 28786), (242, 28885), (243, 28891), (249, 28927), (273, 29089), (283, 29128),

Gene: Troje_25 Start: 20150, Stop: 21247, Start Num: 27

Candidate Starts for Troje_25:

(18, 20081), (Start: 27 @20150 has 38 MA's), (29, 20168), (Start: 58 @20273 has 2 MA's), (128, 20480), (153, 20585), (156, 20603), (159, 20612), (174, 20666), (199, 20726), (223, 20855), (231, 20906), (242, 20990), (246, 21008), (251, 21041), (259, 21092), (260, 21104), (278, 21200), (285, 21236),

Gene: Twinkle_26 Start: 23678, Stop: 24715, Start Num: 45

Candidate Starts for Twinkle_26:

(Start: 45 @23678 has 19 MA's), (68, 23747), (72, 23753), (136, 23933), (143, 23954), (156, 24035), (163, 24062), (184, 24155), (216, 24263), (226, 24326), (235, 24401), (272, 24632),

Gene: Twister6_35 Start: 28645, Stop: 29817, Start Num: 12

Candidate Starts for Twister6_35:

(Start: 12 @28645 has 22 MA's), (30, 28786), (37, 28804), (85, 28939), (105, 29005), (136, 29092), (156, 29194), (202, 29299), (226, 29425), (227, 29431), (242, 29539), (246, 29557), (284, 29782),

Gene: Twonlo_32 Start: 29352, Stop: 30632, Start Num: 12

Candidate Starts for Twonlo_32:

(Start: 12 @29352 has 22 MA's), (28, 29481), (44, 29538), (Start: 54 @29571 has 3 MA's), (116, 29754), (122, 29766), (142, 29838), (156, 29928), (163, 29955), (169, 29979), (187, 30072), (203, 30132), (210, 30171), (213, 30183), (226, 30267), (229, 30279), (233, 30312), (241, 30375), (246, 30393), (272, 30561), (273, 30567), (283, 30606),

Gene: Typhonomachy_25 Start: 20517, Stop: 21647, Start Num: 27

Candidate Starts for Typhonomachy_25:

(Start: 27 @20517 has 38 MA's), (29, 20535), (Start: 58 @20640 has 2 MA's), (126, 20838), (153, 20952), (156, 20970), (159, 20979), (174, 21033), (190, 21114), (199, 21126), (205, 21159), (231, 21306), (234, 21345), (242, 21390), (246, 21408), (250, 21432), (258, 21489), (268, 21549), (273, 21585), (281, 21615), (285, 21636),

Gene: VanDeWege_36 Start: 28981, Stop: 30153, Start Num: 12

Candidate Starts for VanDeWege_36:

(Start: 12 @28981 has 22 MA's), (37, 29140), (85, 29275), (105, 29341), (136, 29428), (156, 29530), (202, 29635), (226, 29761), (227, 29767), (242, 29875), (246, 29893), (284, 30118),

Gene: Vendetta_29 Start: 22610, Stop: 23578, Start Num: 49

Candidate Starts for Vendetta_29:

(14, 22433), (39, 22577), (46, 22601), (Start: 49 @22610 has 3 MA's), (Start: 54 @22625 has 3 MA's), (114, 22805), (135, 22865), (153, 22958), (156, 22976), (167, 23012), (168, 23015), (182, 23030), (218, 23138), (220, 23150), (229, 23216), (233, 23249), (242, 23312), (249, 23354), (250, 23360), (252, 23387), (253, 23390), (256, 23408), (257, 23411), (263, 23450), (266, 23456), (270, 23489), (285, 23567),

Gene: Verity_36 Start: 33271, Stop: 34347, Start Num: 32

Candidate Starts for Verity_36:

(Start: 32 @33271 has 22 MA's), (67, 33379), (89, 33424), (97, 33445), (146, 33592), (156, 33643), (168, 33682), (176, 33724), (191, 33790), (198, 33805), (202, 33832), (206, 33847), (219, 33904), (226, 33958), (227, 33964), (233, 34003), (242, 34072), (246, 34093), (250, 34117), (261, 34192), (272, 34270), (287, 34336),

Gene: ViaConlectus_37 Start: 31720, Stop: 32796, Start Num: 32

Candidate Starts for ViaConlectus_37:

(7, 31426), (22, 31654), (Start: 32 @31720 has 22 MA's), (67, 31828), (90, 31876), (97, 31894), (146, 32041), (149, 32053), (156, 32092), (168, 32131), (176, 32173), (191, 32239), (198, 32254), (202, 32281), (206, 32296), (226, 32407), (233, 32452), (235, 32482), (239, 32500), (242, 32521), (250, 32566), (272, 32719), (287, 32785),

Gene: Vine_26 Start: 21286, Stop: 22272, Start Num: 65

Candidate Starts for Vine_26:

(Start: 65 @21286 has 7 MA's), (130, 21475), (156, 21592), (188, 21721), (194, 21730), (212, 21799), (217, 21823), (226, 21883), (235, 21958), (246, 22018), (247, 22021), (270, 22168), (275, 22204), (284, 22240), (288, 22258),

Gene: Wallaby_29 Start: 21481, Stop: 22581, Start Num: 27

Candidate Starts for Wallaby_29:

(Start: 27 @21481 has 38 MA's), (29, 21499), (Start: 58 @21604 has 2 MA's), (106, 21742), (131, 21820), (136, 21832), (153, 21916), (156, 21934), (162, 21958), (212, 22126), (242, 22318), (245, 22339), (246, 22342), (251, 22375), (260, 22438), (264, 22456), (266, 22462), (285, 22570),

Gene: Widow_25 Start: 19674, Stop: 20909, Start Num: 16

Candidate Starts for Widow_25:

(Start: 16 @19674 has 4 MA's), (31, 19785), (35, 19794), (38, 19803), (51, 19848), (64, 19893), (86, 19950), (95, 19980), (99, 19992), (122, 20055), (Start: 127 @20079 has 1 MA's), (141, 20124), (151, 20178), (154, 20193), (155, 20196), (158, 20211), (173, 20271), (199, 20367), (207, 20415), (208, 20418), (244, 20649), (254, 20724), (268, 20808), (283, 20883), (284, 20889),

Gene: William_29 Start: 23441, Stop: 24427, Start Num: 66

Candidate Starts for William_29:

(47, 23381), (Start: 66 @23441 has 8 MA's), (92, 23504), (Start: 107 @23552 has 1 MA's), (143, 23648), (156, 23729), (157, 23732), (163, 23756), (180, 23825), (187, 23852), (215, 23960), (216, 23963), (226, 24026), (229, 24038), (235, 24101), (250, 24182), (253, 24212), (272, 24332),

Gene: WinkNick_26 Start: 22010, Stop: 23047, Start Num: 45

Candidate Starts for WinkNick_26:

(11, 21839), (13, 21842), (Start: 45 @22010 has 19 MA's), (68, 22079), (72, 22085), (136, 22265), (143, 22286), (156, 22367), (163, 22394), (184, 22487), (216, 22595), (226, 22658), (235, 22733), (272, 22964),

Gene: Wocket_30 Start: 24063, Stop: 25040, Start Num: 66

Candidate Starts for Wocket_30:

(47, 24003), (Start: 66 @24063 has 8 MA's), (98, 24144), (Start: 107 @24177 has 1 MA's), (120, 24204), (143, 24270), (152, 24327), (156, 24351), (215, 24582), (216, 24585), (226, 24648), (233, 24693), (242, 24762), (272, 24954), (284, 25005),

Gene: Wolfwood_27 Start: 21481, Stop: 22581, Start Num: 27

Candidate Starts for Wolfwood_27:

(Start: 27 @21481 has 38 MA's), (29, 21499), (Start: 58 @21604 has 2 MA's), (106, 21742), (131, 21820), (136, 21832), (153, 21916), (156, 21934), (162, 21958), (212, 22126), (242, 22318), (245, 22339), (246, 22342), (251, 22375), (260, 22438), (264, 22456), (266, 22462), (285, 22570),

Gene: Wooper_29 Start: 28066, Stop: 29163, Start Num: 23

Candidate Starts for Wooper_29:

(Start: 23 @28066 has 16 MA's), (53, 28180), (73, 28240), (Start: 81 @28255 has 1 MA's), (87, 28270), (144, 28450), (150, 28489), (156, 28522), (178, 28579), (190, 28627), (195, 28639), (218, 28732), (219, 28735), (220, 28744), (225, 28771), (226, 28786), (227, 28792), (242, 28891), (243, 28897), (251, 28948), (253, 28969), (262, 29014), (283, 29134),

Gene: Yarn_24 Start: 20174, Stop: 21286, Start Num: 27

Candidate Starts for Yarn_24:

(Start: 27 @20174 has 38 MA's), (29, 20192), (Start: 58 @20297 has 2 MA's), (102, 20420), (153, 20609), (156, 20627), (159, 20636), (161, 20648), (191, 20753), (212, 20837), (231, 20945), (242, 21029), (246, 21047), (251, 21080), (260, 21143), (264, 21161), (265, 21164), (266, 21167), (273,

21224),

Gene: Yeshua_29 Start: 28043, Stop: 29140, Start Num: 23

Candidate Starts for Yeshua_29:

(Start: 23 @28043 has 16 MA's), (53, 28157), (73, 28217), (Start: 81 @28232 has 1 MA's), (87, 28247), (144, 28427), (150, 28466), (156, 28499), (178, 28556), (190, 28604), (195, 28616), (218, 28709), (219, 28712), (220, 28721), (225, 28748), (226, 28763), (227, 28769), (242, 28868), (243, 28874), (251, 28925), (253, 28946), (262, 28991), (283, 29111),

Gene: Yucky_25 Start: 21145, Stop: 22131, Start Num: 65

Candidate Starts for Yucky_25:

(Start: 65 @21145 has 7 MA's), (130, 21334), (156, 21451), (162, 21475), (187, 21574), (189, 21580), (212, 21658), (213, 21661), (217, 21682), (226, 21742), (235, 21817), (241, 21850), (250, 21901), (265, 21994), (284, 22099), (288, 22117),

Gene: Yummy_26 Start: 20064, Stop: 21200, Start Num: 27

Candidate Starts for Yummy_26:

(18, 19995), (Start: 27 @20064 has 38 MA's), (29, 20082), (Start: 58 @20187 has 2 MA's), (153, 20499), (156, 20517), (159, 20526), (165, 20550), (172, 20577), (199, 20679), (223, 20808), (231, 20859), (233, 20880), (242, 20943), (246, 20961), (251, 20994), (260, 21057), (278, 21153),

Gene: YungMoney_35 Start: 29700, Stop: 30950, Start Num: 12

Candidate Starts for YungMoney_35:

(Start: 12 @29700 has 22 MA's), (Start: 27 @29814 has 38 MA's), (37, 29859), (42, 29880), (93, 30024), (105, 30060), (136, 30147), (156, 30249), (163, 30276), (180, 30357), (212, 30480), (213, 30483), (216, 30501), (227, 30570), (242, 30678),

Gene: Zareef_27 Start: 21489, Stop: 22589, Start Num: 27

Candidate Starts for Zareef_27:

(Start: 27 @21489 has 38 MA's), (29, 21507), (Start: 58 @21612 has 2 MA's), (106, 21750), (131, 21828), (136, 21840), (140, 21855), (153, 21924), (156, 21942), (162, 21966), (212, 22134), (242, 22326), (245, 22347), (246, 22350), (251, 22383), (260, 22446), (264, 22464), (266, 22470), (285, 22578),

Gene: Zipp_36 Start: 33174, Stop: 34250, Start Num: 32

Candidate Starts for Zipp_36:

(Start: 32 @33174 has 22 MA's), (67, 33282), (90, 33330), (97, 33348), (146, 33495), (149, 33507), (156, 33546), (168, 33585), (176, 33627), (191, 33693), (198, 33708), (202, 33735), (206, 33750), (219, 33807), (226, 33861), (233, 33906), (242, 33975), (246, 33996), (250, 34020), (261, 34095), (272, 34173), (287, 34239),

Gene: Zitch_38 Start: 31061, Stop: 32053, Start Num: 32

Candidate Starts for Zitch_38:

(Start: 32 @31061 has 22 MA's), (67, 31169), (90, 31217), (97, 31235), (146, 31382), (149, 31394), (153, 31415), (156, 31433), (202, 31538), (219, 31610), (226, 31664), (233, 31709), (242, 31778), (246, 31799), (250, 31823), (261, 31898), (272, 31976), (287, 32042),