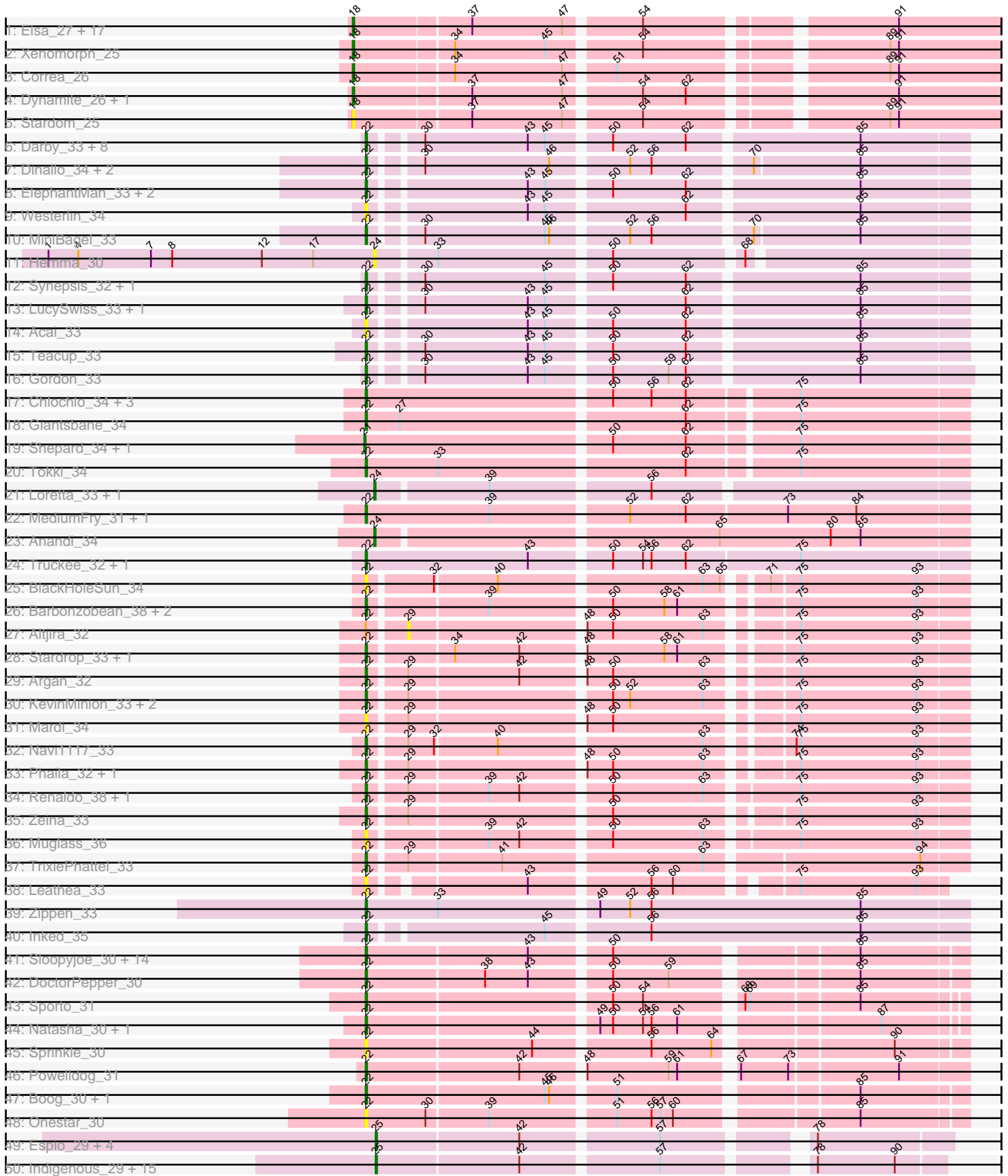
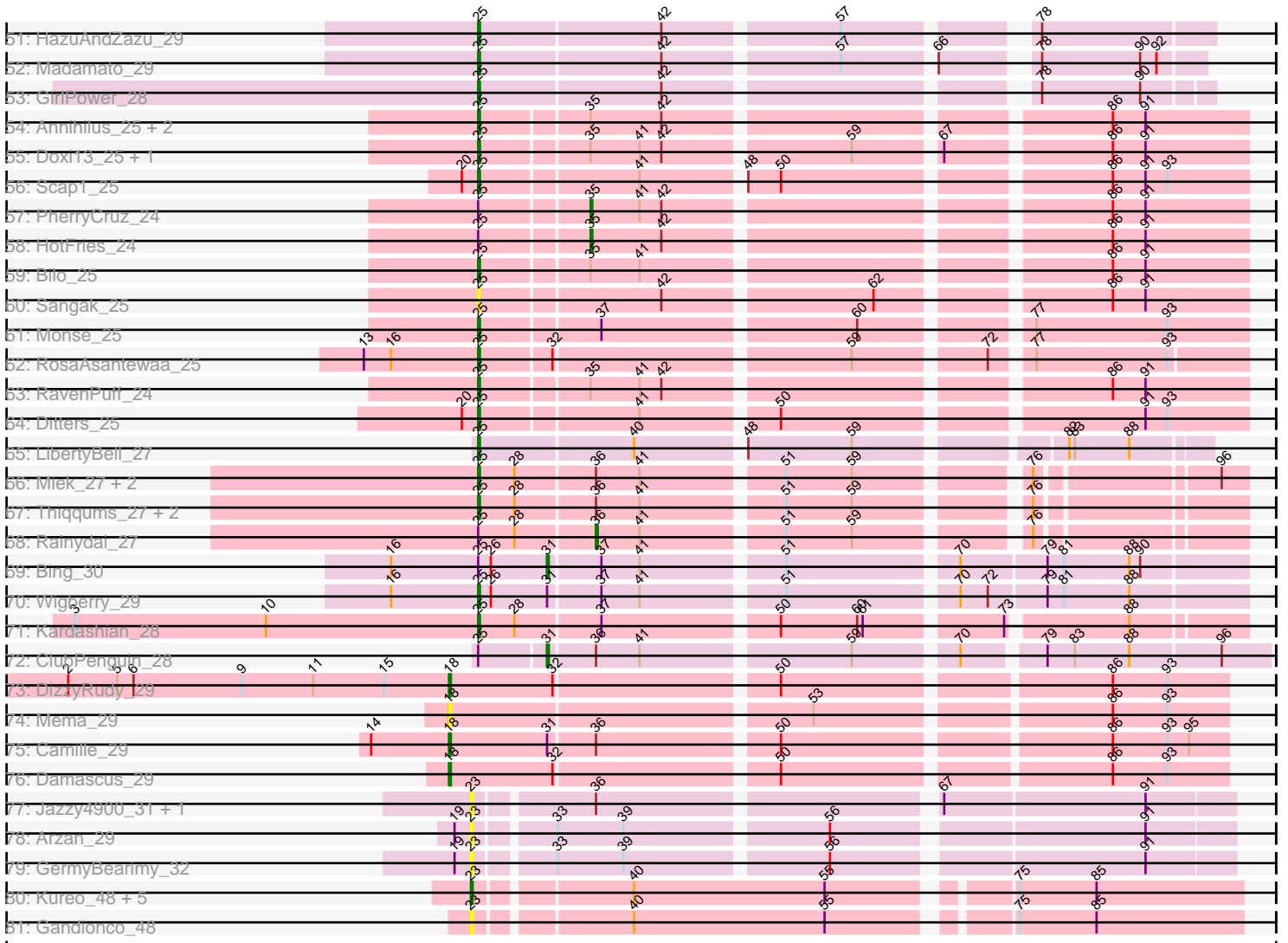


Pham 308150



Pham 308150



Note: Tracks are now grouped by subcluster and scaled. Switching in subcluster is indicated by changes in track color. Track scale is now set by default to display the region 30 bp upstream of start 1 to 30 bp downstream of the last possible start. If this default region is judged to be packed too tightly with annotated starts, the track will be further scaled to only show that region of the ORF with annotated starts. This action will be indicated by adding "Zoomed" to the title. For starts, yellow indicates the location of called starts comprised solely of Glimmer/GeneMark auto-annotations, green indicates the location of called starts with at least 1 manual gene annotation.

Pham 308150 Report

This analysis was run 06/27/26 on database version 652.

Pham number 308150 has 175 members, 32 are drafts.

Phages represented in each track:

- Track 1 : Elsa_27, Mooshroom_26, Cheesy_27, Circum_27, KeaneyLin_25, GoCrazy_25, BenitoAntonio_27, Kardesai_25, Bowling_27, Hankly_25, Arcadia_27, YoshiYama_26, Tribby_27, Nason_27, Mudcat_26, JEGGS_26, Benllo_25, Heisenberger_26
- Track 2 : Xenomorph_25
- Track 3 : Correa_26
- Track 4 : Dynamite_26, NapoleonB_26
- Track 5 : Stardom_25
- Track 6 : Darby_33, Nivinsha_33, AreFloNak_33, CastorTray_35, ScienceWizSam_35, Issa_33, Trustiboi_34, DevitoJr_33, Tatanka_33
- Track 7 : Dinallo_34, CapnMurica_33, Tenno_34
- Track 8 : ElephantMan_33, Brunswick_33, Niktson_33
- Track 9 : Westerlin_34
- Track 10 : MiniBagel_33
- Track 11 : Hemma_30
- Track 12 : Synopsis_32, Breylor17_34
- Track 13 : LucySwiss_33, Nightmare_34
- Track 14 : Acai_33
- Track 15 : Teacup_33
- Track 16 : Gordon_33
- Track 17 : Chlochlo_34, Phaby_34, Tipton_34, Bouchard_34
- Track 18 : Giantsbane_34
- Track 19 : Shepard_34, LilHuddy_34
- Track 20 : Tokki_34
- Track 21 : Loretta_33, Ingrid_33
- Track 22 : MediumFry_31, Caterpillar_31
- Track 23 : Anandi_34
- Track 24 : Truckee_32, Makai_33
- Track 25 : BlackHoleSun_34
- Track 26 : Barbonzobean_38, Lewando_36, Kinny_35
- Track 27 : Altjira_32
- Track 28 : Stardrop_33, PoeMe_34
- Track 29 : Argan_32
- Track 30 : KevinMinion_33, Tenney120_33, Uzumaki_33
- Track 31 : Mardi_34
- Track 32 : Navi1117_33
- Track 33 : Phaila_32, GantcherGoblin_32

- Track 34 : Renaldo_38, Biscute_34
- Track 35 : Zeina_33
- Track 36 : Muglass_36
- Track 37 : TrixiePhattel_33
- Track 38 : Leathea_33
- Track 39 : Zippen_33
- Track 40 : Inked_35
- Track 41 : Sloopyjoe_30, Spain_30, StarLord_30, Shiba_30, Salk_30, Stayer_30, BronxBay_30, Egad_30, Raunak_31, Michelle_30, MrAaronian_30, ProfFrink_30, Jeremy4pt0_30, Linda_30, Djungelskog_30
- Track 42 : DoctorPepper_30
- Track 43 : Sporto_31
- Track 44 : Natasha_30, RustyBoy_30
- Track 45 : Sprinkle_30
- Track 46 : Powelldog_31
- Track 47 : Boog_30, HerbBucket_29
- Track 48 : Onestar_30
- Track 49 : Espio_29, DrGrey_29, Popy_29, Soshi_29, FrodoSwaggins_29
- Track 50 : Indigenous_29, Maya_29, Meibysrarus_29, Hoshi_29, FidgetOrca_29, TaidaOne_29, TonyStarch_29, IceWarrior_29, CherryBlossom_29, Rima_29, Esketit_29, Spectropatronm_29, OlympicHelado_29, Jaylociraptor_29, TieDye_28, Namu_29
- Track 51 : HazuAndZazu_29
- Track 52 : Madamato_29
- Track 53 : GirlPower_28
- Track 54 : Annihilus_25, SheRa_25, Moozy_25
- Track 55 : Doxi13_25, GoblinVoyage_25
- Track 56 : Scap1_25
- Track 57 : PherryCruz_24
- Track 58 : HotFries_24
- Track 59 : Bilo_25
- Track 60 : Sangak_25
- Track 61 : Monse_25
- Track 62 : RosaAsantewaa_25
- Track 63 : RavenPuff_24
- Track 64 : Ditters_25
- Track 65 : LibertyBell_27
- Track 66 : Miek_27, SendItCS_26, FromIndy_28
- Track 67 : Thiqqums_27, CricKo_27, Regigigas_28
- Track 68 : Rainydai_27
- Track 69 : Bing_30
- Track 70 : Wigberry_29
- Track 71 : Kardashian_28
- Track 72 : ClubPenguin_28
- Track 73 : DizzyRudy_29
- Track 74 : Mema_29
- Track 75 : Camille_29
- Track 76 : Damascus_29
- Track 77 : Jazzy4900_31, Sunny4976_30
- Track 78 : Arzan_29
- Track 79 : GermyBearimy_32
- Track 80 : Kureo_48, Marianna39_48, JeNeSaisPas_46, Paella_47, Qui_47, Elver_47

- Track 81 : Gandionco_48

Summary of Final Annotations (See graph section above for start numbers):

The start number called the most often in the published annotations is 22, it was called in 64 of the 143 non-draft genes in the pham.

Genes that call this "Most Annotated" start:

- Acai_33, AreFloNak_33, Argan_32, Barbonzobean_38, Biscute_34, BlackHoleSun_34, Boog_30, Bouchard_34, Breylor17_34, BronxBay_30, Brunswick_33, CapnMurica_33, CastorTray_35, Caterpillar_31, Chlochlo_34, Darby_33, DevitoJr_33, Dinallo_34, Djungelskog_30, DoctorPepper_30, Egad_30, ElephantMan_33, GantcherGoblin_32, Giantsbane_34, Gordon_33, HerbBucket_29, Inked_35, Issa_33, Jeremy4pt0_30, KevinMinion_33, Kinny_35, Leathea_33, Lewando_36, Linda_30, LucySwiss_33, Makai_33, Mardi_34, MediumFry_31, Michelle_30, MiniBagel_33, MrAaronian_30, Muglass_36, Natasha_30, Navi1117_33, Nightmare_34, Niktson_33, Nivinsha_33, Onestar_30, Phaby_34, Phaila_32, PoeMe_34, PowellDog_31, ProfFrink_30, Raunak_31, Renaldo_38, RustyBoy_30, Salk_30, ScienceWizSam_35, Shiba_30, Sloopyjoe_30, Spain_30, Sporto_31, Sprinkle_30, StarLord_30, Stardrop_33, Stayer_30, Synepsis_32, Tatanka_33, Teacup_33, Tenney120_33, Tenno_34, Tipton_34, Tokki_34, TrixiePhattel_33, Truckee_32, Trustiboi_34, Uzumaki_33, Westerlin_34, Zeina_33, Zippen_33,

Genes that have the "Most Annotated" start but do not call it:

- Altjira_32,

Genes that do not have the "Most Annotated" start:

- Anandi_34, Annihilus_25, Arcadia_27, Arzan_29, BenitoAntonio_27, Benllo_25, Bilo_25, Bing_30, Bowling_27, Camille_29, Cheesy_27, CherryBlossom_29, Circum_27, ClubPenguin_28, Correa_26, CricKo_27, Damascus_29, Ditters_25, DizzyRudy_29, Doxi13_25, DrGrey_29, Dynamite_26, Elsa_27, Elver_47, Esketit_29, Espio_29, FidgetOrca_29, FrodoSwaggins_29, FromIndy_28, Gandionco_48, GermyBearimy_32, GirlPower_28, GoCrazy_25, GoblinVoyage_25, Hankly_25, HazuAndZazu_29, Heisenberger_26, Hemma_30, Hoshi_29, HotFries_24, IceWarrior_29, Indigenous_29, Ingrid_33, JEGGS_26, Jaylociraptor_29, Jazzy4900_31, JeNeSaisPas_46, Kardashian_28, Kardesai_25, KeaneyLin_25, Kureo_48, LibertyBell_27, LilHuddy_34, Loretta_33, Madamato_29, Marianna39_48, Maya_29, Meibysrarus_29, Mema_29, Miek_27, Monse_25, Mooshroom_26, Moozy_25, Mudcat_26, Namu_29, NapoleonB_26, Nason_27, OlympicHelado_29, Paella_47, PherryCruz_24, Popy_29, Qui_47, Rainydai_27, RavenPuff_24, Regigigas_28, Rima_29, RosaAsantewaa_25, Sangak_25, Scap1_25, SendItCS_26, SheRa_25, Shepard_34, Soshi_29, Spectropatronm_29, Stardom_25, Sunny4976_30, TaidaOne_29, Thiqqums_27, TieDye_28, TonyStarch_29, Tribby_27, Wigberry_29, Xenomorph_25, YoshiYama_26,

Summary by start number:

Start 18:

- Found in 27 of 175 (15.4%) of genes in pham
- Manual Annotations of this start: 24 of 143

- Called 100.0% of time when present
- Phage (with cluster) where this start called: Arcadia_27 (AM), BenitoAntonio_27 (AM), Benllo_25 (AM), Bowling_27 (AM), Camille_29 (EL), Cheesy_27 (AM), Circum_27 (AM), Correa_26 (AM), Damascus_29 (EL), DizzyRudy_29 (EL), Dynamite_26 (AM), Elsa_27 (AM), GoCrazy_25 (AM), Hankly_25 (AM), Heisenberger_26 (AM), JEGGS_26 (AM), Kardesai_25 (AM), KeaneyLin_25 (AM), Mema_29 (EL), Mooshroom_26 (AM), Mudcat_26 (AM), NapoleonB_26 (AM), Nason_27 (AM), Stardom_25 (AM), Tribby_27 (AM), Xenomorph_25 (AM), YoshiYama_26 (AM),

Start 21:

- Found in 2 of 175 (1.1%) of genes in pham
- Manual Annotations of this start: 2 of 143
- Called 100.0% of time when present
- Phage (with cluster) where this start called: LilHuddy_34 (AU2), Shepard_34 (AU2),

Start 22:

- Found in 81 of 175 (46.3%) of genes in pham
- Manual Annotations of this start: 64 of 143
- Called 98.8% of time when present
- Phage (with cluster) where this start called: Acai_33 (AU1), AreFloNak_33 (AU1), Argan_32 (AU6), Barbonzobean_38 (AU6), Biscute_34 (AU6), BlackHoleSun_34 (AU6), Boog_30 (AW), Bouchard_34 (AU2), Breylor17_34 (AU1), BronxBay_30 (AW), Brunswick_33 (AU1), CapnMurica_33 (AU1), CastorTray_35 (AU1), Caterpillar_31 (AU4), Chlochlo_34 (AU2), Darby_33 (AU1), DevitoJr_33 (AU1), Dinallo_34 (AU1), Djungelskog_30 (AW), DoctorPepper_30 (AW), Egad_30 (AW), ElephantMan_33 (AU1), GantcherGoblin_32 (AU6), Giantsbane_34 (AU2), Gordon_33 (AU1), HerbBucket_29 (AW), Inked_35 (AU7), Issa_33 (AU1), Jeremy4pt0_30 (AW), KevinMinion_33 (AU6), Kinny_35 (AU6), Leathea_33 (AU6), Lewando_36 (AU6), Linda_30 (AW), LucySwiss_33 (AU1), Makai_33 (AU5), Mardi_34 (AU6), MediumFry_31 (AU4), Michelle_30 (AW), MiniBagel_33 (AU1), MrAaronian_30 (AW), Muglass_36 (AU6), Natasha_30 (AW), Navi1117_33 (AU6), Nightmare_34 (AU1), Nikton_33 (AU1), Nivinsha_33 (AU1), Onestar_30 (AW), Phaby_34 (AU2), Phaila_32 (AU6), PoeMe_34 (AU6), Powelldog_31 (AW), ProfFrink_30 (AW), Raunak_31 (AW), Renaldo_38 (AU6), RustyBoy_30 (AW), Salk_30 (AW), ScienceWizSam_35 (AU1), Shiba_30 (AW), Sloopypjoe_30 (AW), Spain_30 (AW), Sporto_31 (AW), Sprinkle_30 (AW), StarLord_30 (AW), Stardrop_33 (AU6), Stayer_30 (AW), Synepsis_32 (AU1), Tatanka_33 (AU1), Teacup_33 (AU1), Tenney120_33 (AU6), Tenno_34 (AU1), Tipton_34 (AU2), Tokki_34 (AU2), TrixiePhattel_33 (AU6), Truckee_32 (AU5), Trustiboi_34 (AU1), Uzumaki_33 (AU6), Westerlin_34 (AU1), Zeina_33 (AU6), Zippen_33 (AU7),

Start 23:

- Found in 11 of 175 (6.3%) of genes in pham
- Manual Annotations of this start: 3 of 143
- Called 100.0% of time when present
- Phage (with cluster) where this start called: Arzan_29 (FI), Elver_47 (FK), Gandionco_48 (FK), GermyBearimy_32 (FI), Jazzy4900_31 (FI), JeNeSaisPas_46 (FK), Kureo_48 (FK), Marianna39_48 (FK), Paella_47 (FK), Qui_47 (FK), Sunny4976_30 (FI),

Start 24:

- Found in 4 of 175 (2.3%) of genes in pham

- Manual Annotations of this start: 3 of 143
- Called 100.0% of time when present
- Phage (with cluster) where this start called: Anandi_34 (AU4), Hemma_30 (AU1), Ingrid_33 (AU3), Loretta_33 (AU3),

Start 25:

- Found in 50 of 175 (28.6%) of genes in pham
- Manual Annotations of this start: 42 of 143
- Called 90.0% of time when present
- Phage (with cluster) where this start called: Annihilus_25 (BI2), Bilo_25 (BI2), CherryBlossom_29 (BI1), CricKo_27 (BI4), Ditters_25 (BI2), Doxi13_25 (BI2), DrGrey_29 (BI1), Esketit_29 (BI1), Espio_29 (BI1), FidgetOrca_29 (BI1), FrodoSwaggins_29 (BI1), FromIndy_28 (BI4), GirlPower_28 (BI1), GoblinVoyage_25 (BI2), HazuAndZazu_29 (BI1), Hoshi_29 (BI1), IceWarrior_29 (BI1), Indigenous_29 (BI1), Jaylociraptor_29 (BI1), Kardashian_28 (BI6), LibertyBell_27 (BI3), Madamato_29 (BI1), Maya_29 (BI1), Meibysrurus_29 (BI1), Miek_27 (BI4), Monse_25 (BI2), Moozy_25 (BI2), Namu_29 (BI1), OlympicHelado_29 (BI1), Popy_29 (BI1), RavenPuff_24 (BI2), Regigigas_28 (BI4), Rima_29 (BI1), RosaAsantewaa_25 (BI2), Sangak_25 (BI2), Scap1_25 (BI2), SendItCS_26 (BI4), SheRa_25 (BI2), Soshi_29 (BI1), Spectropatronm_29 (BI1), TaidaOne_29 (BI1), Thiqqums_27 (BI4), TieDye_28 (BI1), TonyStarch_29 (BI1), Wigberry_29 (BI5),

Start 29:

- Found in 13 of 175 (7.4%) of genes in pham
- No Manual Annotations of this start.
- Called 7.7% of time when present
- Phage (with cluster) where this start called: Altjira_32 (AU6),

Start 31:

- Found in 4 of 175 (2.3%) of genes in pham
- Manual Annotations of this start: 2 of 143
- Called 50.0% of time when present
- Phage (with cluster) where this start called: Bing_30 (BI5), ClubPenguin_28 (BI7),

Start 35:

- Found in 9 of 175 (5.1%) of genes in pham
- Manual Annotations of this start: 2 of 143
- Called 22.2% of time when present
- Phage (with cluster) where this start called: HotFries_24 (BI2), PherryCruz_24 (BI2),

Start 36:

- Found in 11 of 175 (6.3%) of genes in pham
- Manual Annotations of this start: 1 of 143
- Called 9.1% of time when present
- Phage (with cluster) where this start called: Rainydai_27 (BI4),

Summary by clusters:

There are 19 clusters represented in this pham: EL, FK, AU7, AM, AU1, AU3, AU2, AU5, AU4, AW, AU6, BI6, FI, BI4, BI5, BI2, BI3, BI7, BI1,

Info for manual annotations of cluster AM:

- Start number 18 was manually annotated 21 times for cluster AM.

Info for manual annotations of cluster AU1:

- Start number 22 was manually annotated 19 times for cluster AU1.

Info for manual annotations of cluster AU2:

- Start number 21 was manually annotated 2 times for cluster AU2.
- Start number 22 was manually annotated 6 times for cluster AU2.

Info for manual annotations of cluster AU3:

- Start number 24 was manually annotated 2 times for cluster AU3.

Info for manual annotations of cluster AU4:

- Start number 22 was manually annotated 2 times for cluster AU4.
- Start number 24 was manually annotated 1 time for cluster AU4.

Info for manual annotations of cluster AU5:

- Start number 22 was manually annotated 2 times for cluster AU5.

Info for manual annotations of cluster AU6:

- Start number 22 was manually annotated 14 times for cluster AU6.

Info for manual annotations of cluster AU7:

- Start number 22 was manually annotated 2 times for cluster AU7.

Info for manual annotations of cluster AW:

- Start number 22 was manually annotated 19 times for cluster AW.

Info for manual annotations of cluster BI1:

- Start number 25 was manually annotated 24 times for cluster BI1.

Info for manual annotations of cluster BI2:

- Start number 25 was manually annotated 11 times for cluster BI2.
- Start number 35 was manually annotated 2 times for cluster BI2.

Info for manual annotations of cluster BI3:

- Start number 25 was manually annotated 1 time for cluster BI3.

Info for manual annotations of cluster BI4:

- Start number 25 was manually annotated 4 times for cluster BI4.
- Start number 36 was manually annotated 1 time for cluster BI4.

Info for manual annotations of cluster BI5:

- Start number 25 was manually annotated 1 time for cluster BI5.
- Start number 31 was manually annotated 1 time for cluster BI5.

Info for manual annotations of cluster BI6:

- Start number 25 was manually annotated 1 time for cluster BI6.

Info for manual annotations of cluster BI7:

- Start number 31 was manually annotated 1 time for cluster BI7.

Info for manual annotations of cluster EL:

- Start number 18 was manually annotated 3 times for cluster EL.

Info for manual annotations of cluster FK:

•Start number 23 was manually annotated 3 times for cluster FK.

Gene Information:

Gene: Acai_33 Start: 28488, Stop: 28880, Start Num: 22

Candidate Starts for Acai_33:

(Start: 22 @28488 has 64 MA's), (43, 28590), (45, 28602), (50, 28641), (62, 28692), (85, 28806),

Gene: Altjira_32 Start: 27735, Stop: 28097, Start Num: 29

Candidate Starts for Altjira_32:

(Start: 22 @27711 has 64 MA's), (29, 27735), (48, 27849), (50, 27867), (63, 27930), (75, 27981), (93, 28062),

Gene: Anandi_34 Start: 29026, Stop: 29427, Start Num: 24

Candidate Starts for Anandi_34:

(Start: 24 @29026 has 3 MA's), (65, 29254), (80, 29332), (85, 29353),

Gene: Annihilus_25 Start: 22331, Stop: 22720, Start Num: 25

Candidate Starts for Annihilus_25:

(Start: 25 @22331 has 42 MA's), (Start: 35 @22385 has 2 MA's), (42, 22424), (86, 22646), (91, 22664),

Gene: Arcadia_27 Start: 24836, Stop: 25252, Start Num: 18

Candidate Starts for Arcadia_27:

(Start: 18 @24836 has 24 MA's), (37, 24914), (47, 24977), (54, 25025), (91, 25181),

Gene: AreFloNak_33 Start: 28429, Stop: 28821, Start Num: 22

Candidate Starts for AreFloNak_33:

(Start: 22 @28429 has 64 MA's), (30, 28459), (43, 28531), (45, 28543), (50, 28582), (62, 28633), (85, 28747),

Gene: Argan_32 Start: 26978, Stop: 27364, Start Num: 22

Candidate Starts for Argan_32:

(Start: 22 @26978 has 64 MA's), (29, 27002), (42, 27077), (48, 27116), (50, 27134), (63, 27197), (75, 27248), (93, 27329),

Gene: Arzan_29 Start: 25708, Stop: 26094, Start Num: 23

Candidate Starts for Arzan_29:

(19, 25699), (Start: 23 @25708 has 3 MA's), (33, 25747), (39, 25783), (56, 25888), (91, 26047),

Gene: Barbonzobean_38 Start: 28548, Stop: 28934, Start Num: 22

Candidate Starts for Barbonzobean_38:

(Start: 22 @28548 has 64 MA's), (39, 28626), (50, 28704), (58, 28740), (61, 28749), (75, 28818), (93, 28899),

Gene: BenitoAntonio_27 Start: 24452, Stop: 24868, Start Num: 18

Candidate Starts for BenitoAntonio_27:

(Start: 18 @24452 has 24 MA's), (37, 24530), (47, 24593), (54, 24641), (91, 24797),

Gene: Benllo_25 Start: 24736, Stop: 25152, Start Num: 18

Candidate Starts for Benllo_25:

(Start: 18 @24736 has 24 MA's), (37, 24814), (47, 24877), (54, 24925), (91, 25081),

Gene: Bilo_25 Start: 22822, Stop: 23211, Start Num: 25

Candidate Starts for Bilo_25:

(Start: 25 @22822 has 42 MA's), (Start: 35 @22876 has 2 MA's), (41, 22903), (86, 23137), (91, 23155),

Gene: Bing_30 Start: 25162, Stop: 25521, Start Num: 31

Candidate Starts for Bing_30:

(16, 25078), (Start: 25 @25126 has 42 MA's), (26, 25132), (Start: 31 @25162 has 2 MA's), (37, 25189), (41, 25210), (51, 25282), (70, 25369), (79, 25414), (81, 25423), (88, 25459), (90, 25465),

Gene: Biscute_34 Start: 28599, Stop: 28991, Start Num: 22

Candidate Starts for Biscute_34:

(Start: 22 @28599 has 64 MA's), (29, 28623), (39, 28677), (42, 28698), (50, 28755), (63, 28818), (75, 28875), (93, 28956),

Gene: BlackHoleSun_34 Start: 26685, Stop: 27071, Start Num: 22

Candidate Starts for BlackHoleSun_34:

(Start: 22 @26685 has 64 MA's), (32, 26727), (40, 26769), (63, 26904), (65, 26916), (71, 26937), (75, 26955), (93, 27036),

Gene: Boog_30 Start: 25583, Stop: 25972, Start Num: 22

Candidate Starts for Boog_30:

(Start: 22 @25583 has 64 MA's), (45, 25706), (46, 25709), (51, 25748), (85, 25901),

Gene: Bouchard_34 Start: 28632, Stop: 29036, Start Num: 22

Candidate Starts for Bouchard_34:

(Start: 22 @28632 has 64 MA's), (50, 28797), (56, 28824), (62, 28848), (75, 28920),

Gene: Bowling_27 Start: 24550, Stop: 24966, Start Num: 18

Candidate Starts for Bowling_27:

(Start: 18 @24550 has 24 MA's), (37, 24628), (47, 24691), (54, 24739), (91, 24895),

Gene: Breylor17_34 Start: 29035, Stop: 29427, Start Num: 22

Candidate Starts for Breylor17_34:

(Start: 22 @29035 has 64 MA's), (30, 29065), (45, 29149), (50, 29188), (62, 29239), (85, 29353),

Gene: BronxBay_30 Start: 25582, Stop: 25971, Start Num: 22

Candidate Starts for BronxBay_30:

(Start: 22 @25582 has 64 MA's), (43, 25693), (50, 25744), (85, 25900),

Gene: Brunswick_33 Start: 28500, Stop: 28892, Start Num: 22

Candidate Starts for Brunswick_33:

(Start: 22 @28500 has 64 MA's), (43, 28602), (45, 28614), (50, 28653), (62, 28704), (85, 28818),

Gene: Camille_29 Start: 23493, Stop: 23894, Start Num: 18

Candidate Starts for Camille_29:

(14, 23451), (Start: 18 @23493 has 24 MA's), (Start: 31 @23547 has 2 MA's), (Start: 36 @23571 has 1 MA's), (50, 23664), (86, 23832), (93, 23862), (95, 23874),

Gene: CapnMurica_33 Start: 29586, Stop: 29975, Start Num: 22

Candidate Starts for CapnMurica_33:

(Start: 22 @29586 has 64 MA's), (30, 29616), (46, 29703), (52, 29751), (56, 29766), (70, 29829), (85, 29901),

Gene: CastorTray_35 Start: 28893, Stop: 29285, Start Num: 22

Candidate Starts for CastorTray_35:

(Start: 22 @28893 has 64 MA's), (30, 28923), (43, 28995), (45, 29007), (50, 29046), (62, 29097), (85, 29211),

Gene: Caterpillar_31 Start: 27666, Stop: 28076, Start Num: 22

Candidate Starts for Caterpillar_31:

(Start: 22 @27666 has 64 MA's), (39, 27753), (52, 27843), (62, 27882), (73, 27951), (84, 27999),

Gene: Cheesy_27 Start: 24551, Stop: 24967, Start Num: 18

Candidate Starts for Cheesy_27:

(Start: 18 @24551 has 24 MA's), (37, 24629), (47, 24692), (54, 24740), (91, 24896),

Gene: CherryBlossom_29 Start: 25276, Stop: 25635, Start Num: 25

Candidate Starts for CherryBlossom_29:

(Start: 25 @25276 has 42 MA's), (42, 25372), (57, 25462), (78, 25549), (90, 25603),

Gene: Chlochlo_34 Start: 28668, Stop: 29072, Start Num: 22

Candidate Starts for Chlochlo_34:

(Start: 22 @28668 has 64 MA's), (50, 28833), (56, 28860), (62, 28884), (75, 28956),

Gene: Circum_27 Start: 24558, Stop: 24974, Start Num: 18

Candidate Starts for Circum_27:

(Start: 18 @24558 has 24 MA's), (37, 24636), (47, 24699), (54, 24747), (91, 24903),

Gene: ClubPenguin_28 Start: 24936, Stop: 25301, Start Num: 31

Candidate Starts for ClubPenguin_28:

(Start: 25 @24903 has 42 MA's), (Start: 31 @24936 has 2 MA's), (Start: 36 @24960 has 1 MA's), (41, 24984), (59, 25092), (70, 25143), (79, 25182), (83, 25197), (88, 25227), (96, 25275),

Gene: Correa_26 Start: 24066, Stop: 24482, Start Num: 18

Candidate Starts for Correa_26:

(Start: 18 @24066 has 24 MA's), (34, 24132), (47, 24207), (51, 24237), (89, 24405), (91, 24411),

Gene: CricKo_27 Start: 24163, Stop: 24540, Start Num: 25

Candidate Starts for CricKo_27:

(Start: 25 @24163 has 42 MA's), (28, 24181), (Start: 36 @24223 has 1 MA's), (41, 24247), (51, 24319), (59, 24355), (76, 24436),

Gene: Damascus_29 Start: 24399, Stop: 24800, Start Num: 18

Candidate Starts for Damascus_29:

(Start: 18 @24399 has 24 MA's), (32, 24456), (50, 24570), (86, 24738), (93, 24768),

Gene: Darby_33 Start: 28339, Stop: 28731, Start Num: 22

Candidate Starts for Darby_33:

(Start: 22 @28339 has 64 MA's), (30, 28369), (43, 28441), (45, 28453), (50, 28492), (62, 28543), (85, 28657),

Gene: DevitoJr_33 Start: 28510, Stop: 28902, Start Num: 22

Candidate Starts for DevitoJr_33:

(Start: 22 @28510 has 64 MA's), (30, 28540), (43, 28612), (45, 28624), (50, 28663), (62, 28714), (85, 28828),

Gene: Dinallo_34 Start: 29574, Stop: 29963, Start Num: 22

Candidate Starts for Dinallo_34:

(Start: 22 @29574 has 64 MA's), (30, 29604), (46, 29691), (52, 29739), (56, 29754), (70, 29817), (85, 29889),

Gene: Ditters_25 Start: 22781, Stop: 23170, Start Num: 25

Candidate Starts for Ditters_25:

(20, 22772), (Start: 25 @22781 has 42 MA's), (41, 22862), (50, 22931), (91, 23114), (93, 23126),

Gene: DizzyRudy_29 Start: 24315, Stop: 24716, Start Num: 18

Candidate Starts for DizzyRudy_29:

(2, 24105), (5, 24132), (6, 24141), (9, 24201), (11, 24240), (15, 24279), (Start: 18 @24315 has 24 MA's), (32, 24372), (50, 24486), (86, 24654), (93, 24684),

Gene: Djungelskog_30 Start: 25582, Stop: 25971, Start Num: 22

Candidate Starts for Djungelskog_30:

(Start: 22 @25582 has 64 MA's), (43, 25693), (50, 25744), (85, 25900),

Gene: DoctorPepper_30 Start: 25582, Stop: 25971, Start Num: 22

Candidate Starts for DoctorPepper_30:

(Start: 22 @25582 has 64 MA's), (38, 25663), (43, 25693), (50, 25744), (59, 25783), (85, 25900),

Gene: Doxi13_25 Start: 22302, Stop: 22691, Start Num: 25

Candidate Starts for Doxi13_25:

(Start: 25 @22302 has 42 MA's), (Start: 35 @22356 has 2 MA's), (41, 22383), (42, 22395), (59, 22491), (67, 22533), (86, 22617), (91, 22635),

Gene: DrGrey_29 Start: 25776, Stop: 26141, Start Num: 25

Candidate Starts for DrGrey_29:

(Start: 25 @25776 has 42 MA's), (42, 25872), (57, 25962), (78, 26049),

Gene: Dynamite_26 Start: 24359, Stop: 24775, Start Num: 18

Candidate Starts for Dynamite_26:

(Start: 18 @24359 has 24 MA's), (37, 24437), (47, 24500), (54, 24548), (62, 24578), (91, 24704),

Gene: Egad_30 Start: 25583, Stop: 25972, Start Num: 22

Candidate Starts for Egad_30:

(Start: 22 @25583 has 64 MA's), (43, 25694), (50, 25745), (85, 25901),

Gene: ElephantMan_33 Start: 29040, Stop: 29432, Start Num: 22

Candidate Starts for ElephantMan_33:

(Start: 22 @29040 has 64 MA's), (43, 29142), (45, 29154), (50, 29193), (62, 29244), (85, 29358),

Gene: Elsa_27 Start: 24836, Stop: 25252, Start Num: 18

Candidate Starts for Elsa_27:

(Start: 18 @24836 has 24 MA's), (37, 24914), (47, 24977), (54, 25025), (91, 25181),

Gene: Elver_47 Start: 37243, Stop: 37635, Start Num: 23

Candidate Starts for Elver_47:

(Start: 23 @37243 has 3 MA's), (40, 37321), (55, 37426), (75, 37513), (85, 37555),

Gene: Esketit_29 Start: 25259, Stop: 25618, Start Num: 25

Candidate Starts for Esketit_29:

(Start: 25 @25259 has 42 MA's), (42, 25355), (57, 25445), (78, 25532), (90, 25586),

Gene: Espio_29 Start: 25777, Stop: 26142, Start Num: 25

Candidate Starts for Espio_29:

(Start: 25 @25777 has 42 MA's), (42, 25873), (57, 25963), (78, 26050),

Gene: FidgetOrca_29 Start: 25265, Stop: 25624, Start Num: 25

Candidate Starts for FidgetOrca_29:

(Start: 25 @25265 has 42 MA's), (42, 25361), (57, 25451), (78, 25538), (90, 25592),

Gene: FrodoSwaggins_29 Start: 25776, Stop: 26141, Start Num: 25

Candidate Starts for FrodoSwaggins_29:

(Start: 25 @25776 has 42 MA's), (42, 25872), (57, 25962), (78, 26049),

Gene: FromIndy_28 Start: 24151, Stop: 24528, Start Num: 25

Candidate Starts for FromIndy_28:

(Start: 25 @24151 has 42 MA's), (28, 24169), (Start: 36 @24211 has 1 MA's), (41, 24235), (51, 24307), (59, 24343), (76, 24424), (96, 24514),

Gene: Gandionco_48 Start: 37766, Stop: 38158, Start Num: 23

Candidate Starts for Gandionco_48:

(Start: 23 @37766 has 3 MA's), (40, 37844), (55, 37949), (75, 38036), (85, 38078),

Gene: GantcherGoblin_32 Start: 27017, Stop: 27403, Start Num: 22

Candidate Starts for GantcherGoblin_32:

(Start: 22 @27017 has 64 MA's), (29, 27041), (48, 27155), (50, 27173), (63, 27236), (75, 27287), (93, 27368),

Gene: GermyBearimy_32 Start: 26139, Stop: 26525, Start Num: 23

Candidate Starts for GermyBearimy_32:

(19, 26130), (Start: 23 @26139 has 3 MA's), (33, 26178), (39, 26214), (56, 26319), (91, 26478),

Gene: Giantsbane_34 Start: 27528, Stop: 27932, Start Num: 22

Candidate Starts for Giantsbane_34:

(Start: 22 @27528 has 64 MA's), (27, 27552), (62, 27744), (75, 27816),

Gene: GirlPower_28 Start: 26747, Stop: 27109, Start Num: 25

Candidate Starts for GirlPower_28:

(Start: 25 @26747 has 42 MA's), (42, 26843), (78, 27020), (90, 27074),

Gene: GoCrazy_25 Start: 24359, Stop: 24775, Start Num: 18

Candidate Starts for GoCrazy_25:

(Start: 18 @24359 has 24 MA's), (37, 24437), (47, 24500), (54, 24548), (91, 24704),

Gene: GoblinVoyage_25 Start: 22302, Stop: 22691, Start Num: 25

Candidate Starts for GoblinVoyage_25:

(Start: 25 @22302 has 42 MA's), (Start: 35 @22356 has 2 MA's), (41, 22383), (42, 22395), (59, 22491), (67, 22533), (86, 22617), (91, 22635),

Gene: Gordon_33 Start: 29615, Stop: 30010, Start Num: 22

Candidate Starts for Gordon_33:

(Start: 22 @29615 has 64 MA's), (30, 29645), (43, 29717), (45, 29729), (50, 29768), (59, 29807), (62, 29819), (85, 29933),

Gene: Hankly_25 Start: 23581, Stop: 23997, Start Num: 18

Candidate Starts for Hankly_25:

(Start: 18 @23581 has 24 MA's), (37, 23659), (47, 23722), (54, 23770), (91, 23926),

Gene: HazuAndZazu_29 Start: 25777, Stop: 26142, Start Num: 25

Candidate Starts for HazuAndZazu_29:

(Start: 25 @25777 has 42 MA's), (42, 25873), (57, 25963), (78, 26050),

Gene: Heisenberger_26 Start: 24229, Stop: 24645, Start Num: 18

Candidate Starts for Heisenberger_26:

(Start: 18 @24229 has 24 MA's), (37, 24307), (47, 24370), (54, 24418), (91, 24574),

Gene: Hemma_30 Start: 24951, Stop: 25334, Start Num: 24

Candidate Starts for Hemma_30:

(1, 24723), (4, 24744), (7, 24795), (8, 24810), (12, 24873), (17, 24909), (Start: 24 @24951 has 3 MA's), (33, 24990), (50, 25104), (68, 25188),

Gene: HerbBucket_29 Start: 25583, Stop: 25972, Start Num: 22

Candidate Starts for HerbBucket_29:

(Start: 22 @25583 has 64 MA's), (45, 25706), (46, 25709), (51, 25748), (85, 25901),

Gene: Hoshi_29 Start: 25259, Stop: 25618, Start Num: 25

Candidate Starts for Hoshi_29:

(Start: 25 @25259 has 42 MA's), (42, 25355), (57, 25445), (78, 25532), (90, 25586),

Gene: HotFries_24 Start: 22355, Stop: 22690, Start Num: 35

Candidate Starts for HotFries_24:

(Start: 25 @22301 has 42 MA's), (Start: 35 @22355 has 2 MA's), (42, 22394), (86, 22616), (91, 22634),

Gene: IceWarrior_29 Start: 25259, Stop: 25618, Start Num: 25

Candidate Starts for IceWarrior_29:

(Start: 25 @25259 has 42 MA's), (42, 25355), (57, 25445), (78, 25532), (90, 25586),

Gene: Indigenous_29 Start: 25259, Stop: 25618, Start Num: 25

Candidate Starts for Indigenous_29:

(Start: 25 @25259 has 42 MA's), (42, 25355), (57, 25445), (78, 25532), (90, 25586),

Gene: Ingrid_33 Start: 28232, Stop: 28624, Start Num: 24

Candidate Starts for Ingrid_33:

(Start: 24 @28232 has 3 MA's), (39, 28307), (56, 28412),

Gene: Inked_35 Start: 29245, Stop: 29646, Start Num: 22

Candidate Starts for Inked_35:

(Start: 22 @29245 has 64 MA's), (45, 29359), (56, 29425), (85, 29572),

Gene: Issa_33 Start: 28319, Stop: 28711, Start Num: 22

Candidate Starts for Issa_33:

(Start: 22 @28319 has 64 MA's), (30, 28349), (43, 28421), (45, 28433), (50, 28472), (62, 28523), (85, 28637),

Gene: JEGGS_26 Start: 24283, Stop: 24699, Start Num: 18

Candidate Starts for JEGGS_26:

(Start: 18 @24283 has 24 MA's), (37, 24361), (47, 24424), (54, 24472), (91, 24628),

Gene: Jaylociraptor_29 Start: 25259, Stop: 25618, Start Num: 25

Candidate Starts for Jaylociraptor_29:

(Start: 25 @25259 has 42 MA's), (42, 25355), (57, 25445), (78, 25532), (90, 25586),

Gene: Jazzy4900_31 Start: 26962, Stop: 27348, Start Num: 23

Candidate Starts for Jazzy4900_31:

(Start: 23 @26962 has 3 MA's), (Start: 36 @27022 has 1 MA's), (67, 27193), (91, 27301),

Gene: JeNeSaisPas_46 Start: 37778, Stop: 38170, Start Num: 23

Candidate Starts for JeNeSaisPas_46:

(Start: 23 @37778 has 3 MA's), (40, 37856), (55, 37961), (75, 38048), (85, 38090),

Gene: Jeremy4pt0_30 Start: 25582, Stop: 25971, Start Num: 22

Candidate Starts for Jeremy4pt0_30:

(Start: 22 @25582 has 64 MA's), (43, 25693), (50, 25744), (85, 25900),

Gene: Kardashian_28 Start: 25209, Stop: 25595, Start Num: 25

Candidate Starts for Kardashian_28:

(3, 24987), (10, 25092), (Start: 25 @25209 has 42 MA's), (28, 25227), (37, 25272), (50, 25362), (60, 25404), (61, 25407), (73, 25476), (88, 25536),

Gene: Kardesai_25 Start: 23962, Stop: 24378, Start Num: 18

Candidate Starts for Kardesai_25:

(Start: 18 @23962 has 24 MA's), (37, 24040), (47, 24103), (54, 24151), (91, 24307),

Gene: KeaneyLin_25 Start: 24359, Stop: 24775, Start Num: 18

Candidate Starts for KeaneyLin_25:

(Start: 18 @24359 has 24 MA's), (37, 24437), (47, 24500), (54, 24548), (91, 24704),

Gene: KevinMinion_33 Start: 28111, Stop: 28497, Start Num: 22

Candidate Starts for KevinMinion_33:

(Start: 22 @28111 has 64 MA's), (29, 28135), (50, 28267), (52, 28279), (63, 28330), (75, 28381), (93, 28462),

Gene: Kinny_35 Start: 28866, Stop: 29252, Start Num: 22

Candidate Starts for Kinny_35:

(Start: 22 @28866 has 64 MA's), (39, 28944), (50, 29022), (58, 29058), (61, 29067), (75, 29136), (93, 29217),

Gene: Kureo_48 Start: 36588, Stop: 36980, Start Num: 23

Candidate Starts for Kureo_48:

(Start: 23 @36588 has 3 MA's), (40, 36666), (55, 36771), (75, 36858), (85, 36900),

Gene: Leathea_33 Start: 26912, Stop: 27271, Start Num: 22

Candidate Starts for Leathea_33:

(Start: 22 @26912 has 64 MA's), (43, 27008), (56, 27086), (60, 27101), (75, 27170), (93, 27251),

Gene: Lewando_36 Start: 28935, Stop: 29321, Start Num: 22

Candidate Starts for Lewando_36:

(Start: 22 @28935 has 64 MA's), (39, 29013), (50, 29091), (58, 29127), (61, 29136), (75, 29205), (93, 29286),

Gene: LibertyBell_27 Start: 24107, Stop: 24475, Start Num: 25

Candidate Starts for LibertyBell_27:

(Start: 25 @24107 has 42 MA's), (40, 24188), (48, 24242), (59, 24299), (82, 24401), (83, 24404), (88, 24434),

Gene: LilHuddy_34 Start: 28688, Stop: 29092, Start Num: 21

Candidate Starts for LilHuddy_34:

(Start: 21 @28688 has 2 MA's), (50, 28853), (62, 28904), (75, 28976),

Gene: Linda_30 Start: 25582, Stop: 25971, Start Num: 22

Candidate Starts for Linda_30:

(Start: 22 @25582 has 64 MA's), (43, 25693), (50, 25744), (85, 25900),

Gene: Loretta_33 Start: 28232, Stop: 28624, Start Num: 24

Candidate Starts for Loretta_33:

(Start: 24 @28232 has 3 MA's), (39, 28307), (56, 28412),

Gene: LucySwiss_33 Start: 28343, Stop: 28735, Start Num: 22

Candidate Starts for LucySwiss_33:

(Start: 22 @28343 has 64 MA's), (30, 28373), (43, 28445), (45, 28457), (62, 28547), (85, 28661),

Gene: Madamoto_29 Start: 25237, Stop: 25596, Start Num: 25

Candidate Starts for Madamoto_29:

(Start: 25 @25237 has 42 MA's), (42, 25333), (57, 25423), (66, 25468), (78, 25510), (90, 25564), (92, 25573),

Gene: Makai_33 Start: 28464, Stop: 28874, Start Num: 22

Candidate Starts for Makai_33:

(Start: 22 @28464 has 64 MA's), (43, 28578), (50, 28629), (54, 28650), (56, 28656), (62, 28680), (75, 28758),

Gene: Mardi_34 Start: 27545, Stop: 27931, Start Num: 22

Candidate Starts for Mardi_34:

(Start: 22 @27545 has 64 MA's), (29, 27569), (48, 27683), (50, 27701), (75, 27815), (93, 27896),

Gene: Marianna39_48 Start: 37765, Stop: 38157, Start Num: 23

Candidate Starts for Marianna39_48:

(Start: 23 @37765 has 3 MA's), (40, 37843), (55, 37948), (75, 38035), (85, 38077),

Gene: Maya_29 Start: 25273, Stop: 25632, Start Num: 25

Candidate Starts for Maya_29:

(Start: 25 @25273 has 42 MA's), (42, 25369), (57, 25459), (78, 25546), (90, 25600),

Gene: MediumFry_31 Start: 27668, Stop: 28078, Start Num: 22

Candidate Starts for MediumFry_31:

(Start: 22 @27668 has 64 MA's), (39, 27755), (52, 27845), (62, 27884), (73, 27953), (84, 28001),

Gene: Meibysrarus_29 Start: 25259, Stop: 25618, Start Num: 25
Candidate Starts for Meibysrarus_29:
(Start: 25 @25259 has 42 MA's), (42, 25355), (57, 25445), (78, 25532), (90, 25586),

Gene: Mema_29 Start: 26609, Stop: 27010, Start Num: 18
Candidate Starts for Mema_29:
(Start: 18 @26609 has 24 MA's), (53, 26798), (86, 26948), (93, 26978),

Gene: Michelle_30 Start: 25582, Stop: 25971, Start Num: 22
Candidate Starts for Michelle_30:
(Start: 22 @25582 has 64 MA's), (43, 25693), (50, 25744), (85, 25900),

Gene: Miek_27 Start: 24163, Stop: 24540, Start Num: 25
Candidate Starts for Miek_27:
(Start: 25 @24163 has 42 MA's), (28, 24181), (Start: 36 @24223 has 1 MA's), (41, 24247), (51, 24319),
(59, 24355), (76, 24436), (96, 24526),

Gene: MiniBagel_33 Start: 29565, Stop: 29954, Start Num: 22
Candidate Starts for MiniBagel_33:
(Start: 22 @29565 has 64 MA's), (30, 29595), (45, 29679), (46, 29682), (52, 29730), (56, 29745), (70,
29808), (85, 29880),

Gene: Monse_25 Start: 22333, Stop: 22722, Start Num: 25
Candidate Starts for Monse_25:
(Start: 25 @22333 has 42 MA's), (37, 22393), (60, 22525), (77, 22606), (93, 22678),

Gene: Mooshroom_26 Start: 23962, Stop: 24378, Start Num: 18
Candidate Starts for Mooshroom_26:
(Start: 18 @23962 has 24 MA's), (37, 24040), (47, 24103), (54, 24151), (91, 24307),

Gene: Moozy_25 Start: 22318, Stop: 22707, Start Num: 25
Candidate Starts for Moozy_25:
(Start: 25 @22318 has 42 MA's), (Start: 35 @22372 has 2 MA's), (42, 22411), (86, 22633), (91, 22651),

Gene: MrAaronian_30 Start: 25582, Stop: 25971, Start Num: 22
Candidate Starts for MrAaronian_30:
(Start: 22 @25582 has 64 MA's), (43, 25693), (50, 25744), (85, 25900),

Gene: Mudcat_26 Start: 26260, Stop: 26676, Start Num: 18
Candidate Starts for Mudcat_26:
(Start: 18 @26260 has 24 MA's), (37, 26338), (47, 26401), (54, 26449), (91, 26605),

Gene: Muglass_36 Start: 28503, Stop: 28895, Start Num: 22
Candidate Starts for Muglass_36:
(Start: 22 @28503 has 64 MA's), (39, 28581), (42, 28602), (50, 28659), (63, 28722), (75, 28779), (93,
28860),

Gene: Namu_29 Start: 25265, Stop: 25624, Start Num: 25
Candidate Starts for Namu_29:
(Start: 25 @25265 has 42 MA's), (42, 25361), (57, 25451), (78, 25538), (90, 25592),

Gene: NapoleonB_26 Start: 24359, Stop: 24775, Start Num: 18
Candidate Starts for NapoleonB_26:

(Start: 18 @24359 has 24 MA's), (37, 24437), (47, 24500), (54, 24548), (62, 24578), (91, 24704),

Gene: Nason_27 Start: 24836, Stop: 25252, Start Num: 18

Candidate Starts for Nason_27:

(Start: 18 @24836 has 24 MA's), (37, 24914), (47, 24977), (54, 25025), (91, 25181),

Gene: Natasha_30 Start: 25024, Stop: 25410, Start Num: 22

Candidate Starts for Natasha_30:

(Start: 22 @25024 has 64 MA's), (49, 25177), (50, 25186), (54, 25207), (56, 25213), (61, 25231), (87, 25357),

Gene: Navi1117_33 Start: 27244, Stop: 27630, Start Num: 22

Candidate Starts for Navi1117_33:

(Start: 22 @27244 has 64 MA's), (29, 27268), (32, 27286), (40, 27328), (63, 27463), (74, 27511), (75, 27514), (93, 27595),

Gene: Nightmare_34 Start: 28878, Stop: 29270, Start Num: 22

Candidate Starts for Nightmare_34:

(Start: 22 @28878 has 64 MA's), (30, 28908), (43, 28980), (45, 28992), (62, 29082), (85, 29196),

Gene: Niktson_33 Start: 29040, Stop: 29432, Start Num: 22

Candidate Starts for Niktson_33:

(Start: 22 @29040 has 64 MA's), (43, 29142), (45, 29154), (50, 29193), (62, 29244), (85, 29358),

Gene: Nivinsha_33 Start: 28429, Stop: 28821, Start Num: 22

Candidate Starts for Nivinsha_33:

(Start: 22 @28429 has 64 MA's), (30, 28459), (43, 28531), (45, 28543), (50, 28582), (62, 28633), (85, 28747),

Gene: OlympicHelado_29 Start: 25265, Stop: 25624, Start Num: 25

Candidate Starts for OlympicHelado_29:

(Start: 25 @25265 has 42 MA's), (42, 25361), (57, 25451), (78, 25538), (90, 25592),

Gene: Onestar_30 Start: 25365, Stop: 25754, Start Num: 22

Candidate Starts for Onestar_30:

(Start: 22 @25365 has 64 MA's), (30, 25407), (39, 25449), (51, 25530), (56, 25554), (57, 25560), (60, 25569), (85, 25683),

Gene: Paella_47 Start: 37245, Stop: 37637, Start Num: 23

Candidate Starts for Paella_47:

(Start: 23 @37245 has 3 MA's), (40, 37323), (55, 37428), (75, 37515), (85, 37557),

Gene: Phaby_34 Start: 28643, Stop: 29047, Start Num: 22

Candidate Starts for Phaby_34:

(Start: 22 @28643 has 64 MA's), (50, 28808), (56, 28835), (62, 28859), (75, 28931),

Gene: Phaila_32 Start: 26595, Stop: 26981, Start Num: 22

Candidate Starts for Phaila_32:

(Start: 22 @26595 has 64 MA's), (29, 26619), (48, 26733), (50, 26751), (63, 26814), (75, 26865), (93, 26946),

Gene: PherryCruz_24 Start: 22357, Stop: 22692, Start Num: 35

Candidate Starts for PherryCruz_24:

(Start: 25 @22303 has 42 MA's), (Start: 35 @22357 has 2 MA's), (41, 22384), (42, 22396), (86, 22618), (91, 22636),

Gene: PoeMe_34 Start: 27873, Stop: 28259, Start Num: 22

Candidate Starts for PoeMe_34:

(Start: 22 @27873 has 64 MA's), (34, 27927), (42, 27972), (48, 28011), (58, 28065), (61, 28074), (75, 28143), (93, 28224),

Gene: Popy_29 Start: 25776, Stop: 26141, Start Num: 25

Candidate Starts for Popy_29:

(Start: 25 @25776 has 42 MA's), (42, 25872), (57, 25962), (78, 26049),

Gene: Powelldog_31 Start: 25284, Stop: 25676, Start Num: 22

Candidate Starts for Powelldog_31:

(Start: 22 @25284 has 64 MA's), (42, 25389), (48, 25428), (59, 25485), (61, 25491), (67, 25524), (73, 25557), (91, 25629),

Gene: ProfFrink_30 Start: 25582, Stop: 25971, Start Num: 22

Candidate Starts for ProfFrink_30:

(Start: 22 @25582 has 64 MA's), (43, 25693), (50, 25744), (85, 25900),

Gene: Qui_47 Start: 37245, Stop: 37637, Start Num: 23

Candidate Starts for Qui_47:

(Start: 23 @37245 has 3 MA's), (40, 37323), (55, 37428), (75, 37515), (85, 37557),

Gene: Rainydai_27 Start: 24223, Stop: 24540, Start Num: 36

Candidate Starts for Rainydai_27:

(Start: 25 @24163 has 42 MA's), (28, 24181), (Start: 36 @24223 has 1 MA's), (41, 24247), (51, 24319), (59, 24355), (76, 24436),

Gene: Raunak_31 Start: 25582, Stop: 25971, Start Num: 22

Candidate Starts for Raunak_31:

(Start: 22 @25582 has 64 MA's), (43, 25693), (50, 25744), (85, 25900),

Gene: RavenPuff_24 Start: 22303, Stop: 22692, Start Num: 25

Candidate Starts for RavenPuff_24:

(Start: 25 @22303 has 42 MA's), (Start: 35 @22357 has 2 MA's), (41, 22384), (42, 22396), (86, 22618), (91, 22636),

Gene: Regigigas_28 Start: 24163, Stop: 24540, Start Num: 25

Candidate Starts for Regigigas_28:

(Start: 25 @24163 has 42 MA's), (28, 24181), (Start: 36 @24223 has 1 MA's), (41, 24247), (51, 24319), (59, 24355), (76, 24436),

Gene: Renaldo_38 Start: 28944, Stop: 29336, Start Num: 22

Candidate Starts for Renaldo_38:

(Start: 22 @28944 has 64 MA's), (29, 28968), (39, 29022), (42, 29043), (50, 29100), (63, 29163), (75, 29220), (93, 29301),

Gene: Rima_29 Start: 25265, Stop: 25624, Start Num: 25

Candidate Starts for Rima_29:

(Start: 25 @25265 has 42 MA's), (42, 25361), (57, 25451), (78, 25538), (90, 25592),

Gene: RosaAsantewaa_25 Start: 22174, Stop: 22560, Start Num: 25
Candidate Starts for RosaAsantewaa_25:
(13, 22111), (16, 22126), (Start: 25 @22174 has 42 MA's), (32, 22210), (59, 22363), (72, 22429), (77, 22447), (93, 22519),

Gene: RustyBoy_30 Start: 25006, Stop: 25392, Start Num: 22
Candidate Starts for RustyBoy_30:
(Start: 22 @25006 has 64 MA's), (49, 25159), (50, 25168), (54, 25189), (56, 25195), (61, 25213), (87, 25339),

Gene: Salk_30 Start: 25582, Stop: 25971, Start Num: 22
Candidate Starts for Salk_30:
(Start: 22 @25582 has 64 MA's), (43, 25693), (50, 25744), (85, 25900),

Gene: Sangak_25 Start: 22303, Stop: 22692, Start Num: 25
Candidate Starts for Sangak_25:
(Start: 25 @22303 has 42 MA's), (42, 22396), (62, 22504), (86, 22618), (91, 22636),

Gene: Scap1_25 Start: 22251, Stop: 22640, Start Num: 25
Candidate Starts for Scap1_25:
(20, 22242), (Start: 25 @22251 has 42 MA's), (41, 22332), (48, 22383), (50, 22401), (86, 22566), (91, 22584), (93, 22596),

Gene: ScienceWizSam_35 Start: 28830, Stop: 29222, Start Num: 22
Candidate Starts for ScienceWizSam_35:
(Start: 22 @28830 has 64 MA's), (30, 28860), (43, 28932), (45, 28944), (50, 28983), (62, 29034), (85, 29148),

Gene: SendItCS_26 Start: 24163, Stop: 24540, Start Num: 25
Candidate Starts for SendItCS_26:
(Start: 25 @24163 has 42 MA's), (28, 24181), (Start: 36 @24223 has 1 MA's), (41, 24247), (51, 24319), (59, 24355), (76, 24436), (96, 24526),

Gene: SheRa_25 Start: 22302, Stop: 22691, Start Num: 25
Candidate Starts for SheRa_25:
(Start: 25 @22302 has 42 MA's), (Start: 35 @22356 has 2 MA's), (42, 22395), (86, 22617), (91, 22635),

Gene: Shepard_34 Start: 28685, Stop: 29089, Start Num: 21
Candidate Starts for Shepard_34:
(Start: 21 @28685 has 2 MA's), (50, 28850), (62, 28901), (75, 28973),

Gene: Shiba_30 Start: 25582, Stop: 25971, Start Num: 22
Candidate Starts for Shiba_30:
(Start: 22 @25582 has 64 MA's), (43, 25693), (50, 25744), (85, 25900),

Gene: Sloopyjoe_30 Start: 25583, Stop: 25972, Start Num: 22
Candidate Starts for Sloopyjoe_30:
(Start: 22 @25583 has 64 MA's), (43, 25694), (50, 25745), (85, 25901),

Gene: Soshi_29 Start: 25782, Stop: 26147, Start Num: 25
Candidate Starts for Soshi_29:
(Start: 25 @25782 has 42 MA's), (42, 25878), (57, 25968), (78, 26055),

Gene: Spain_30 Start: 25582, Stop: 25971, Start Num: 22
Candidate Starts for Spain_30:
(Start: 22 @25582 has 64 MA's), (43, 25693), (50, 25744), (85, 25900),

Gene: Spectropatronm_29 Start: 25259, Stop: 25618, Start Num: 25
Candidate Starts for Spectropatronm_29:
(Start: 25 @25259 has 42 MA's), (42, 25355), (57, 25445), (78, 25532), (90, 25586),

Gene: Sporto_31 Start: 26752, Stop: 27138, Start Num: 22
Candidate Starts for Sporto_31:
(Start: 22 @26752 has 64 MA's), (50, 26914), (54, 26935), (68, 26995), (69, 26998), (85, 27070),

Gene: Sprinkle_30 Start: 25726, Stop: 26115, Start Num: 22
Candidate Starts for Sprinkle_30:
(Start: 22 @25726 has 64 MA's), (44, 25840), (56, 25915), (64, 25957), (90, 26068),

Gene: StarLord_30 Start: 25583, Stop: 25972, Start Num: 22
Candidate Starts for StarLord_30:
(Start: 22 @25583 has 64 MA's), (43, 25694), (50, 25745), (85, 25901),

Gene: Stardom_25 Start: 23818, Stop: 24234, Start Num: 18
Candidate Starts for Stardom_25:
(Start: 18 @23818 has 24 MA's), (37, 23896), (47, 23959), (54, 24007), (89, 24157), (91, 24163),

Gene: Stardrop_33 Start: 27569, Stop: 27955, Start Num: 22
Candidate Starts for Stardrop_33:
(Start: 22 @27569 has 64 MA's), (34, 27623), (42, 27668), (48, 27707), (58, 27761), (61, 27770), (75, 27839), (93, 27920),

Gene: Stayer_30 Start: 25582, Stop: 25971, Start Num: 22
Candidate Starts for Stayer_30:
(Start: 22 @25582 has 64 MA's), (43, 25693), (50, 25744), (85, 25900),

Gene: Sunny4976_30 Start: 26962, Stop: 27348, Start Num: 23
Candidate Starts for Sunny4976_30:
(Start: 23 @26962 has 3 MA's), (Start: 36 @27022 has 1 MA's), (67, 27193), (91, 27301),

Gene: Synopsis_32 Start: 28493, Stop: 28885, Start Num: 22
Candidate Starts for Synopsis_32:
(Start: 22 @28493 has 64 MA's), (30, 28523), (45, 28607), (50, 28646), (62, 28697), (85, 28811),

Gene: TaidaOne_29 Start: 25907, Stop: 26266, Start Num: 25
Candidate Starts for TaidaOne_29:
(Start: 25 @25907 has 42 MA's), (42, 26003), (57, 26093), (78, 26180), (90, 26234),

Gene: Tatanka_33 Start: 28977, Stop: 29369, Start Num: 22
Candidate Starts for Tatanka_33:
(Start: 22 @28977 has 64 MA's), (30, 29007), (43, 29079), (45, 29091), (50, 29130), (62, 29181), (85, 29295),

Gene: Teacup_33 Start: 28347, Stop: 28739, Start Num: 22
Candidate Starts for Teacup_33:

(Start: 22 @28347 has 64 MA's), (30, 28377), (43, 28449), (45, 28461), (50, 28500), (62, 28551), (85, 28665),

Gene: Tenney120_33 Start: 27306, Stop: 27692, Start Num: 22

Candidate Starts for Tenney120_33:

(Start: 22 @27306 has 64 MA's), (29, 27330), (50, 27462), (52, 27474), (63, 27525), (75, 27576), (93, 27657),

Gene: Tenno_34 Start: 29574, Stop: 29963, Start Num: 22

Candidate Starts for Tenno_34:

(Start: 22 @29574 has 64 MA's), (30, 29604), (46, 29691), (52, 29739), (56, 29754), (70, 29817), (85, 29889),

Gene: Thiqqums_27 Start: 24163, Stop: 24540, Start Num: 25

Candidate Starts for Thiqqums_27:

(Start: 25 @24163 has 42 MA's), (28, 24181), (Start: 36 @24223 has 1 MA's), (41, 24247), (51, 24319), (59, 24355), (76, 24436),

Gene: TieDye_28 Start: 24951, Stop: 25310, Start Num: 25

Candidate Starts for TieDye_28:

(Start: 25 @24951 has 42 MA's), (42, 25047), (57, 25137), (78, 25224), (90, 25278),

Gene: Tipton_34 Start: 28704, Stop: 29108, Start Num: 22

Candidate Starts for Tipton_34:

(Start: 22 @28704 has 64 MA's), (50, 28869), (56, 28896), (62, 28920), (75, 28992),

Gene: Tokki_34 Start: 28659, Stop: 29063, Start Num: 22

Candidate Starts for Tokki_34:

(Start: 22 @28659 has 64 MA's), (33, 28710), (62, 28875), (75, 28947),

Gene: TonyStarch_29 Start: 25265, Stop: 25624, Start Num: 25

Candidate Starts for TonyStarch_29:

(Start: 25 @25265 has 42 MA's), (42, 25361), (57, 25451), (78, 25538), (90, 25592),

Gene: Tribby_27 Start: 24551, Stop: 24967, Start Num: 18

Candidate Starts for Tribby_27:

(Start: 18 @24551 has 24 MA's), (37, 24629), (47, 24692), (54, 24740), (91, 24896),

Gene: TrixiePhattel_33 Start: 27141, Stop: 27533, Start Num: 22

Candidate Starts for TrixiePhattel_33:

(Start: 22 @27141 has 64 MA's), (29, 27165), (41, 27228), (63, 27360), (94, 27501),

Gene: Truckee_32 Start: 28509, Stop: 28919, Start Num: 22

Candidate Starts for Truckee_32:

(Start: 22 @28509 has 64 MA's), (43, 28623), (50, 28674), (54, 28695), (56, 28701), (62, 28725), (75, 28803),

Gene: Trustiboi_34 Start: 29046, Stop: 29438, Start Num: 22

Candidate Starts for Trustiboi_34:

(Start: 22 @29046 has 64 MA's), (30, 29076), (43, 29148), (45, 29160), (50, 29199), (62, 29250), (85, 29364),

Gene: Uzumaki_33 Start: 27836, Stop: 28222, Start Num: 22

Candidate Starts for Uzumaki_33:

(Start: 22 @27836 has 64 MA's), (29, 27860), (50, 27992), (52, 28004), (63, 28055), (75, 28106), (93, 28187),

Gene: Westerlin_34 Start: 30157, Stop: 30549, Start Num: 22

Candidate Starts for Westerlin_34:

(Start: 22 @30157 has 64 MA's), (43, 30259), (45, 30271), (62, 30361), (85, 30475),

Gene: Wigberry_29 Start: 24678, Stop: 25073, Start Num: 25

Candidate Starts for Wigberry_29:

(16, 24630), (Start: 25 @24678 has 42 MA's), (26, 24684), (Start: 31 @24714 has 2 MA's), (37, 24741), (41, 24762), (51, 24834), (70, 24921), (72, 24936), (79, 24966), (81, 24975), (88, 25011),

Gene: Xenomorph_25 Start: 24569, Stop: 24985, Start Num: 18

Candidate Starts for Xenomorph_25:

(Start: 18 @24569 has 24 MA's), (34, 24635), (45, 24698), (54, 24758), (89, 24908), (91, 24914),

Gene: YoshiYama_26 Start: 24600, Stop: 25016, Start Num: 18

Candidate Starts for YoshiYama_26:

(Start: 18 @24600 has 24 MA's), (37, 24678), (47, 24741), (54, 24789), (91, 24945),

Gene: Zeina_33 Start: 27217, Stop: 27603, Start Num: 22

Candidate Starts for Zeina_33:

(Start: 22 @27217 has 64 MA's), (29, 27241), (50, 27373), (75, 27487), (93, 27568),

Gene: Zippen_33 Start: 28824, Stop: 29237, Start Num: 22

Candidate Starts for Zippen_33:

(Start: 22 @28824 has 64 MA's), (33, 28875), (49, 28980), (52, 29001), (56, 29016), (85, 29163),