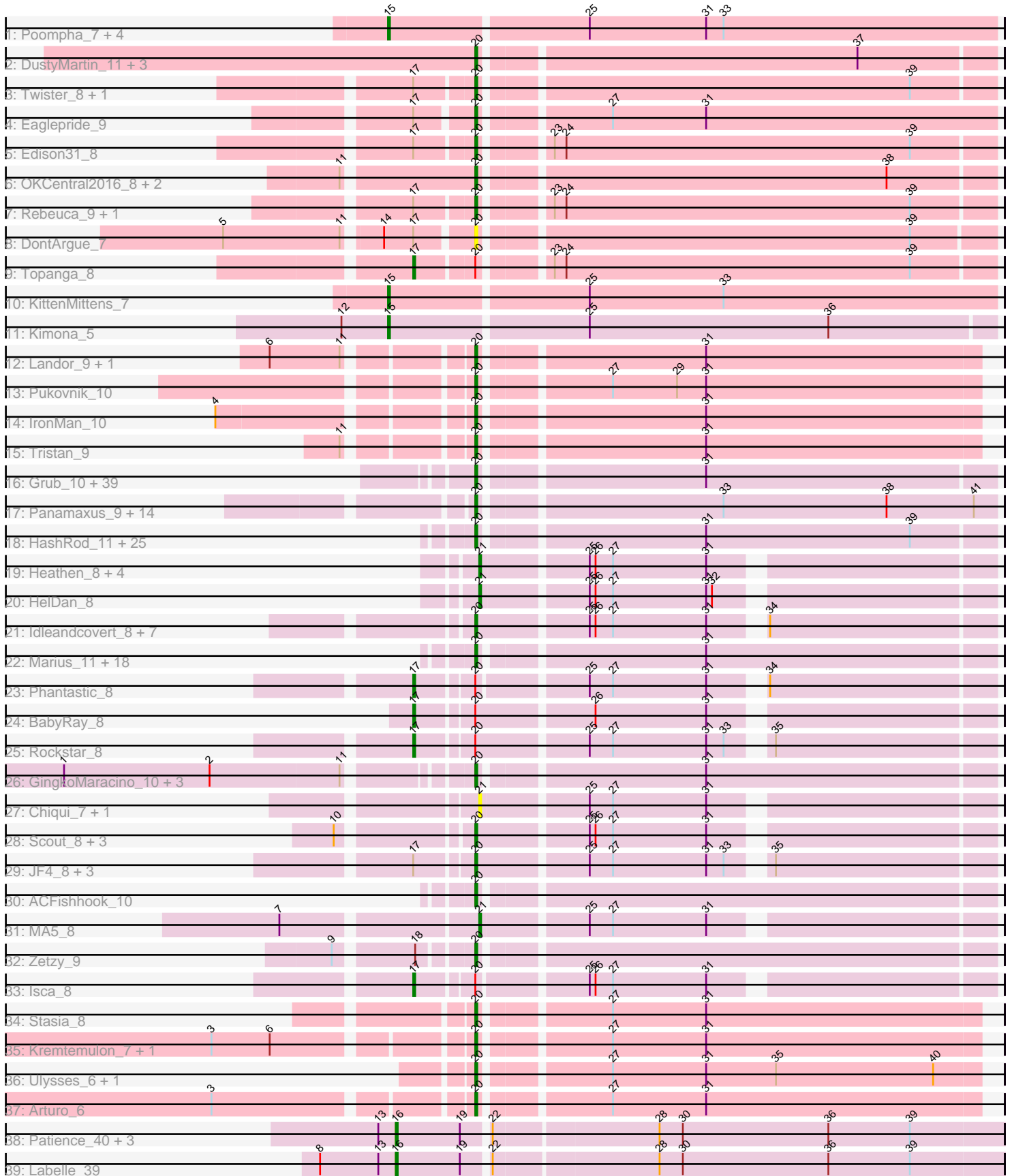


Pham 308151



Note: Tracks are now grouped by subcluster and scaled. Switching in subcluster is indicated by changes in track color. Track scale is now set by default to display the region 30 bp upstream of start 1 to 30 bp downstream of the last possible start. If this default region is judged to be packed too tightly with annotated starts, the track will be further scaled to only show that region of the ORF with annotated starts. This action will be indicated by adding "Zoomed" to the title. For starts, yellow indicates the location of called starts comprised solely of Glimmer/GeneMark auto-annotations, green indicates the location of called starts with at least 1 manual gene annotation.

Pham 308151 Report

This analysis was run 06/27/26 on database version 652.

Pham number 308151 has 173 members, 24 are drafts.

Phages represented in each track:

- Track 1 : Poompha_7, PeaceMeal1_7, Severus_7, Drake94_7, Trike_6
- Track 2 : DustyMartin_11, RhynO_9, Shapes_11, Rowdy_11
- Track 3 : Twister_8, WalterMcMickey_8
- Track 4 : Eaglepride_9
- Track 5 : Edison31_8
- Track 6 : OKCentral2016_8, Goose_8, Chupacabra_8
- Track 7 : Rebeuca_9, Kristoff_9
- Track 8 : DontArgue_7
- Track 9 : Topanga_8
- Track 10 : KittenMittens_7
- Track 11 : Kimona_5
- Track 12 : Landor_9, Bactobuster_9
- Track 13 : Pukovnik_10
- Track 14 : IronMan_10
- Track 15 : Tristan_9
- Track 16 : Grub_10, BreSam8_10, MarQuardt_10, P28Green_10, SoYo_10, Sabia_10, Microwolf_10, Watson_10, Malinsilva_12, Lowa_10, Fernando_10, Aglet_10, Sabinator_10, Bigflo_10, JHC117_10, Phoebe_10, Tiffany_10, Croquant_11, Taurus_10, MuchMore_12, DaHudson_10, Stagni_10, AugsMagnumOpus_12, Lilith_10, PGHhamlin_12, GtownJaz_10, LugYA_12, MadMarie_10, StepMih_10, JenCasNa_10, Pembroke_10, Farber_10, Hercules11_10, Mainiac_10, Cullens_10, Dieselweasel_10, Wooldri_12, Marie_10, Snickers_10, MoneyMay_10
- Track 17 : Panamaxus_9, QuinnKiro_8, Todacoro_9, Popcicle_9, Noella_9, ResDef_9, Caviar_9, Texage_8, Norbert_8, Veracruz_8, Hookmount_9, EtoileNova_9, Margo_9, Pocahontas_9, Lambert1_9
- Track 18 : HashRod_11, LarryKay_10, Misomonster_12, Grif_10, Phoxy_10, Vix_10, EpicPhail_10, LBerry_10, Louie6_10, Montavir_9, Beauxregard13_10, Grum1_10, Penny1_10, TinyPebbles_10, Bxz2_10, Colbster_10, Methuselah_10, Spike509_10, Anubis_12, AgronaGT15_10, Soshari_12, Gwennie_9, Rummer_10, PotatoSplit_11, KADY_11, BuzzBuzz_9
- Track 19 : Heathen_8, Marchesa_8, Kachowdy_8, DropBear_8, Zarafa_8
- Track 20 : HelDan_8
- Track 21 : Idleandcovert_8, Giroux_9, Pistachio_9, Clammy_8, SaturnRing_8, Puppy_9, BlueBird_9, Bugatti_8
- Track 22 : Marius_11, ClownCar_11, HaveUMetTed_11, Groupthink_11, Gemma_10, Kalnok_11, Kalb97_11, PurpleHaze_10, Reba_11, JeppNRM_11,

Calvinny_11, Phranny_11, Jaan_11, Phaded_11, OlanP_10, Heliosoles_10, Manu_11, PhishRPhriends_9, Pawn_10

- Track 23 : Phantastic_8
- Track 24 : BabyRay_8
- Track 25 : Rockstar_8
- Track 26 : GingkoMaracino_10, Ollie_10, SoilDragon_10, Jobu08_10
- Track 27 : Chiqui_7, BabyJohn_7
- Track 28 : Scout_8, Fred313_8, Roimos_8, TNguyen7_8
- Track 29 : JF4_8, MK4_8, B1_06, JF2_8
- Track 30 : ACFishhook_10
- Track 31 : MA5_8
- Track 32 : Zetzy_9
- Track 33 : Isca_8
- Track 34 : Stasia_8
- Track 35 : Kremtemulon_7, Cintron_7
- Track 36 : Ulysses_6, Cindaradix_6
- Track 37 : Arturo_6
- Track 38 : Patience_40, Madrugua_38, SuperSonics_39, Demikore_40
- Track 39 : Labelle_39

Summary of Final Annotations (See graph section above for start numbers):

The start number called the most often in the published annotations is 20, it was called in 131 of the 149 non-draft genes in the pham.

Genes that call this "Most Annotated" start:

- ACFishhook_10, Aglet_10, AgronaGT15_10, Anubis_12, Arturo_6, AugsMagnumOpus_12, B1_06, Bactobuster_9, Beauxregard13_10, Bigflo_10, BlueBird_9, BreSam8_10, Bugatti_8, BuzzBuzz_9, Bxz2_10, Calvinny_11, Caviar_9, Chupacabra_8, Cindaradix_6, Cintron_7, Clammy_8, ClownCar_11, Colbster_10, Croquant_11, Cullens_10, DaHudson_10, Dieselweasel_10, DontArgue_7, DustyMartin_11, Eaglepride_9, Edison31_8, EpicPhail_10, EtoileNova_9, Farber_10, Fernando_10, Fred313_8, Gemma_10, GingkoMaracino_10, Giroux_9, Goose_8, Grif_10, Groupthink_11, Grub_10, Grum1_10, GtownJaz_10, Gwennie_9, HashRod_11, HaveUMetTed_11, Heliosoles_10, Hercules11_10, Hookmount_9, Idleandcovert_8, IronMan_10, JF2_8, JF4_8, JHC117_10, Jaan_11, JenCasNa_10, JeppNRM_11, Jobu08_10, KADY_11, Kalb97_11, Kalnoky_11, Kremtemulon_7, Kristoff_9, LBerry_10, Lambert1_9, Landor_9, LarryKay_10, Lilith_10, Louie6_10, Lowa_10, LugYA_12, MK4_8, MadMarie_10, Mainiac_10, Malinsilva_12, Manu_11, MarQuardt_10, Margo_9, Marie_10, Marius_11, Methuselah_10, Microwolf_10, Misomonster_12, MoneyMay_10, Montavir_9, MuchMore_12, Noella_9, Norbert_8, OKCentral2016_8, OlanP_10, Ollie_10, P28Green_10, PGHhamlin_12, Panamaxus_9, Pawn_10, Pembroke_10, Penny1_10, Phaded_11, PhishRPhriends_9, Phoebe_10, Phoxy_10, Phranny_11, Pistachio_9, Pocahontas_9, Popcicle_9, PotatoSplit_11, Pukovnik_10, Puppy_9, PurpleHaze_10, QuinnKiro_8, Reba_11, Rebeuca_9, ResDef_9, RhynO_9, Roimos_8, Rowdy_11, Rummer_10, Sabia_10, Sabinator_10, SaturnRing_8, Scout_8, Shapes_11, Snickers_10, SoYo_10, SoilDragon_10, Soshari_12, Spike509_10, Stagni_10, Stasia_8, StepMih_10, TNguyen7_8, Taurus_10, Texage_8, Tiffany_10, TinyPebbles_10, Todacoro_9, Tristan_9, Twister_8, Ulysses_6, Veracruz_8, Vix_10,

WalterMcMickey_8, Watson_10, Wooldri_12, Zetzy_9,

Genes that have the "Most Annotated" start but do not call it:

- BabyRay_8, Isca_8, Phantastic_8, Rockstar_8, Topanga_8,

Genes that do not have the "Most Annotated" start:

- BabyJohn_7, Chiqui_7, Demikore_40, Drake94_7, DropBear_8, Heathen_8, HelDan_8, Kachowdy_8, Kimona_5, KittenMittens_7, Labelle_39, MA5_8, Madruga_38, Marchesa_8, Patience_40, PeaceMeal1_7, Poompha_7, Severus_7, SuperSonics_39, Trike_6, Zarafa_8,

Summary by start number:

Start 15:

- Found in 7 of 173 (4.0%) of genes in pham
- Manual Annotations of this start: 7 of 149
- Called 100.0% of time when present
- Phage (with cluster) where this start called: Drake94_7 (A10), Kimona_5 (A19), KittenMittens_7 (A10), PeaceMeal1_7 (A10), Poompha_7 (A10), Severus_7 (A10), Trike_6 (A10),

Start 16:

- Found in 5 of 173 (2.9%) of genes in pham
- Manual Annotations of this start: 3 of 149
- Called 100.0% of time when present
- Phage (with cluster) where this start called: Demikore_40 (U), Labelle_39 (U), Madruga_38 (U), Patience_40 (U), SuperSonics_39 (U),

Start 17:

- Found in 16 of 173 (9.2%) of genes in pham
- Manual Annotations of this start: 5 of 149
- Called 31.2% of time when present
- Phage (with cluster) where this start called: BabyRay_8 (A3), Isca_8 (A3), Phantastic_8 (A3), Rockstar_8 (A3), Topanga_8 (A10),

Start 20:

- Found in 152 of 173 (87.9%) of genes in pham
- Manual Annotations of this start: 131 of 149
- Called 96.7% of time when present
- Phage (with cluster) where this start called: ACFishhook_10 (A3), Aglet_10 (A3), AgronaGT15_10 (A3), Anubis_12 (A3), Arturo_6 (A4), AugsMagnumOpus_12 (A3), B1_06 (A3), Bactobuster_9 (A2), Beauxregard13_10 (A3), Bigflo_10 (A3), BlueBird_9 (A3), BreSam8_10 (A3), Bugatti_8 (A3), BuzzBuzz_9 (A3), Bxz2_10 (A3), Calvinny_11 (A3), Caviar_9 (A3), Chupacabra_8 (A10), Cindaradix_6 (A4), Cintron_7 (A4), Clammy_8 (A3), ClownCar_11 (A3), Colbster_10 (A3), Croquant_11 (A3), Cullens_10 (A3), DaHudson_10 (A3), Dieselweasel_10 (A3), DontArgue_7 (A10), DustyMartin_11 (A10), Eaglepride_9 (A10), Edison31_8 (A10), EpicPhail_10 (A3), EtoileNova_9 (A3), Farber_10 (A3), Fernando_10 (A3), Fred313_8 (A3), Gemma_10 (A3), GingkoMaracino_10 (A3), Giroux_9 (A3), Goose_8 (A10), Grif_10 (A3), Groupthink_11 (A3), Grub_10 (A3), Grum1_10 (A3), GtownJaz_10 (A3), Gwennie_9 (A3), HashRod_11 (A3), HaveUMetTed_11 (A3), Heliosoles_10 (A3), Hercules11_10 (A3), Hookmount_9 (A3), Idleandcovert_8 (A3), IronMan_10 (A2), JF2_8 (A3), JF4_8 (A3), JHC117_10 (A3), Jaan_11 (A2), JenCasNa_10 (A3), JeppNRM_11 (A3),

Jobu08_10 (A3), KADY_11 (A3), Kalb97_11 (A3), Kalnoky_11 (A3), Kremtemulon_7 (A4), Kristoff_9 (A10), LBerry_10 (A3), Lambert1_9 (A3), Landor_9 (A2), LarryKay_10 (A3), Lilith_10 (A3), Louie6_10 (A3), Lowa_10 (A3), LugYA_12 (A3), MK4_8 (A3), MadMarie_10 (A3), Mainiac_10 (A3), Malinsilva_12 (A3), Manu_11 (A3), MarQuardt_10 (A3), Margo_9 (A3), Marie_10 (A3), Marius_11 (A3), Methuselah_10 (A3), Microwolf_10 (A3), Misomonster_12 (A3), MoneyMay_10 (A3), Montavir_9 (A3), MuchMore_12 (A3), Noella_9 (A3), Norbert_8 (A3), OKCentral2016_8 (A10), OlanP_10 (A3), Ollie_10 (A3), P28Green_10 (A3), PGHhamlin_12 (A3), Panamaxus_9 (A3), Pawn_10 (A3), Pembroke_10 (A3), Penny1_10 (A3), Phaded_11 (A2), PhishRPhriends_9 (A3), Phoebe_10 (A3), Phoxy_10 (A3), Phranny_11 (A3), Pistachio_9 (A3), Pocahontas_9 (A3), Popcicle_9 (A3), PotatoSplit_11 (A3), Pukovnik_10 (A2), Puppy_9 (A3), PurpleHaze_10 (A3), QuinnKiro_8 (A3), Reba_11 (A3), Rebeuca_9 (A10), ResDef_9 (A3), RhynO_9 (A10), Roimos_8 (A3), Rowdy_11 (A10), Rummer_10 (A3), Sabia_10 (A3), Sabinator_10 (A3), SaturnRing_8 (A3), Scout_8 (A3), Shapes_11 (A10), Snickers_10 (A3), SoYo_10 (A3), SoilDragon_10 (A3), Soshari_12 (A3), Spike509_10 (A3), Stagni_10 (A3), Stasia_8 (A4), StepMih_10 (A3), TNguyen7_8 (A3), Taurus_10 (A3), Texage_8 (A3), Tiffany_10 (A3), TinyPebbles_10 (A3), Todacoro_9 (A3), Tristan_9 (A2), Twister_8 (A10), Ulysses_6 (A4), Veracruz_8 (A3), Vix_10 (A3), WalterMcMickey_8 (A10), Watson_10 (A3), Wooldri_12 (A3), Zetzy_9 (A3),

Start 21:

- Found in 9 of 173 (5.2%) of genes in pham
- Manual Annotations of this start: 3 of 149
- Called 100.0% of time when present
- Phage (with cluster) where this start called: BabyJohn_7 (A3), Chiqui_7 (A3), DropBear_8 (A3), Heathen_8 (A3), HelDan_8 (A3), Kachowdy_8 (A3), MA5_8 (A3), Marchesa_8 (A3), Zarafa_8 (A3),

Summary by clusters:

There are 6 clusters represented in this pham: A10, A19, A3, A2, U, A4,

Info for manual annotations of cluster A10:

- Start number 15 was manually annotated 6 times for cluster A10.
- Start number 17 was manually annotated 1 time for cluster A10.
- Start number 20 was manually annotated 10 times for cluster A10.

Info for manual annotations of cluster A19:

- Start number 15 was manually annotated 1 time for cluster A19.

Info for manual annotations of cluster A2:

- Start number 20 was manually annotated 7 times for cluster A2.

Info for manual annotations of cluster A3:

- Start number 17 was manually annotated 4 times for cluster A3.
- Start number 20 was manually annotated 108 times for cluster A3.
- Start number 21 was manually annotated 3 times for cluster A3.

Info for manual annotations of cluster A4:

- Start number 20 was manually annotated 6 times for cluster A4.

Info for manual annotations of cluster U:

- Start number 16 was manually annotated 3 times for cluster U.

Gene Information:

Gene: ACFishhook_10 Start: 4283, Stop: 4537, Start Num: 20
Candidate Starts for ACFishhook_10:
(Start: 20 @4283 has 131 MA's),

Gene: Aglet_10 Start: 4168, Stop: 4422, Start Num: 20
Candidate Starts for Aglet_10:
(Start: 20 @4168 has 131 MA's), (31, 4276),

Gene: AgronaGT15_10 Start: 4075, Stop: 4329, Start Num: 20
Candidate Starts for AgronaGT15_10:
(Start: 20 @4075 has 131 MA's), (31, 4183), (39, 4288),

Gene: Anubis_12 Start: 4035, Stop: 4289, Start Num: 20
Candidate Starts for Anubis_12:
(Start: 20 @4035 has 131 MA's), (31, 4143), (39, 4248),

Gene: Arturo_6 Start: 3781, Stop: 4029, Start Num: 20
Candidate Starts for Arturo_6:
(3, 3661), (Start: 20 @3781 has 131 MA's), (27, 3841), (31, 3889),

Gene: AugsMagnumOpus_12 Start: 4159, Stop: 4413, Start Num: 20
Candidate Starts for AugsMagnumOpus_12:
(Start: 20 @4159 has 131 MA's), (31, 4267),

Gene: B1_06 Start: 3569, Stop: 3817, Start Num: 20
Candidate Starts for B1_06:
(Start: 17 @3542 has 5 MA's), (Start: 20 @3569 has 131 MA's), (25, 3623), (27, 3635), (31, 3683), (33, 3692), (35, 3707),

Gene: BabyJohn_7 Start: 4154, Stop: 4399, Start Num: 21
Candidate Starts for BabyJohn_7:
(Start: 21 @4154 has 3 MA's), (25, 4205), (27, 4217), (31, 4265),

Gene: BabyRay_8 Start: 4138, Stop: 4413, Start Num: 17
Candidate Starts for BabyRay_8:
(Start: 17 @4138 has 5 MA's), (Start: 20 @4165 has 131 MA's), (26, 4222), (31, 4279),

Gene: Bactobuster_9 Start: 5958, Stop: 6206, Start Num: 20
Candidate Starts for Bactobuster_9:
(6, 5868), (11, 5904), (Start: 20 @5958 has 131 MA's), (31, 6066),

Gene: Beauxregard13_10 Start: 4167, Stop: 4421, Start Num: 20
Candidate Starts for Beauxregard13_10:
(Start: 20 @4167 has 131 MA's), (31, 4275), (39, 4380),

Gene: Bigflo_10 Start: 4165, Stop: 4419, Start Num: 20
Candidate Starts for Bigflo_10:

(Start: 20 @4165 has 131 MA's), (31, 4273),

Gene: BlueBird_9 Start: 3932, Stop: 4180, Start Num: 20

Candidate Starts for BlueBird_9:

(Start: 20 @3932 has 131 MA's), (25, 3986), (26, 3989), (27, 3998), (31, 4046), (34, 4067),

Gene: BreSam8_10 Start: 4160, Stop: 4414, Start Num: 20

Candidate Starts for BreSam8_10:

(Start: 20 @4160 has 131 MA's), (31, 4268),

Gene: Bugatti_8 Start: 3932, Stop: 4180, Start Num: 20

Candidate Starts for Bugatti_8:

(Start: 20 @3932 has 131 MA's), (25, 3986), (26, 3989), (27, 3998), (31, 4046), (34, 4067),

Gene: BuzzBuzz_9 Start: 4251, Stop: 4505, Start Num: 20

Candidate Starts for BuzzBuzz_9:

(Start: 20 @4251 has 131 MA's), (31, 4359), (39, 4464),

Gene: Bxz2_10 Start: 4261, Stop: 4515, Start Num: 20

Candidate Starts for Bxz2_10:

(Start: 20 @4261 has 131 MA's), (31, 4369), (39, 4474),

Gene: Calvinny_11 Start: 4202, Stop: 4456, Start Num: 20

Candidate Starts for Calvinny_11:

(Start: 20 @4202 has 131 MA's), (31, 4310),

Gene: Caviar_9 Start: 4236, Stop: 4493, Start Num: 20

Candidate Starts for Caviar_9:

(Start: 20 @4236 has 131 MA's), (33, 4353), (38, 4437), (41, 4482),

Gene: Chiqui_7 Start: 4154, Stop: 4399, Start Num: 21

Candidate Starts for Chiqui_7:

(Start: 21 @4154 has 3 MA's), (25, 4205), (27, 4217), (31, 4265),

Gene: Chupacabra_8 Start: 3891, Stop: 4145, Start Num: 20

Candidate Starts for Chupacabra_8:

(11, 3828), (Start: 20 @3891 has 131 MA's), (38, 4092),

Gene: Cindaradix_6 Start: 3421, Stop: 3669, Start Num: 20

Candidate Starts for Cindaradix_6:

(Start: 20 @3421 has 131 MA's), (27, 3481), (31, 3529), (35, 3565), (40, 3646),

Gene: Cintron_7 Start: 3781, Stop: 4029, Start Num: 20

Candidate Starts for Cintron_7:

(3, 3661), (6, 3691), (Start: 20 @3781 has 131 MA's), (27, 3841), (31, 3889),

Gene: Clammy_8 Start: 3932, Stop: 4180, Start Num: 20

Candidate Starts for Clammy_8:

(Start: 20 @3932 has 131 MA's), (25, 3986), (26, 3989), (27, 3998), (31, 4046), (34, 4067),

Gene: ClownCar_11 Start: 4200, Stop: 4454, Start Num: 20

Candidate Starts for ClownCar_11:

(Start: 20 @4200 has 131 MA's), (31, 4308),

Gene: Colbster_10 Start: 4167, Stop: 4421, Start Num: 20
Candidate Starts for Colbster_10:
(Start: 20 @4167 has 131 MA's), (31, 4275), (39, 4380),

Gene: Croquant_11 Start: 4165, Stop: 4419, Start Num: 20
Candidate Starts for Croquant_11:
(Start: 20 @4165 has 131 MA's), (31, 4273),

Gene: Cullens_10 Start: 4165, Stop: 4419, Start Num: 20
Candidate Starts for Cullens_10:
(Start: 20 @4165 has 131 MA's), (31, 4273),

Gene: DaHudson_10 Start: 4159, Stop: 4413, Start Num: 20
Candidate Starts for DaHudson_10:
(Start: 20 @4159 has 131 MA's), (31, 4267),

Gene: Demikore_40 Start: 33545, Stop: 33847, Start Num: 16
Candidate Starts for Demikore_40:
(13, 33536), (Start: 16 @33545 has 3 MA's), (19, 33578), (22, 33590), (28, 33671), (30, 33683), (36, 33758), (39, 33800),

Gene: Dieselweasel_10 Start: 4168, Stop: 4422, Start Num: 20
Candidate Starts for Dieselweasel_10:
(Start: 20 @4168 has 131 MA's), (31, 4276),

Gene: DontArgue_7 Start: 2128, Stop: 2382, Start Num: 20
Candidate Starts for DontArgue_7:
(5, 2011), (11, 2071), (14, 2086), (Start: 17 @2101 has 5 MA's), (Start: 20 @2128 has 131 MA's), (39, 2341),

Gene: Drake94_7 Start: 1969, Stop: 2277, Start Num: 15
Candidate Starts for Drake94_7:
(Start: 15 @1969 has 7 MA's), (25, 2068), (31, 2128), (33, 2137),

Gene: DropBear_8 Start: 3995, Stop: 4240, Start Num: 21
Candidate Starts for DropBear_8:
(Start: 21 @3995 has 3 MA's), (25, 4046), (26, 4049), (27, 4058), (31, 4106),

Gene: DustyMartin_11 Start: 3946, Stop: 4200, Start Num: 20
Candidate Starts for DustyMartin_11:
(Start: 20 @3946 has 131 MA's), (37, 4132),

Gene: Eaglepride_9 Start: 3886, Stop: 4143, Start Num: 20
Candidate Starts for Eaglepride_9:
(Start: 17 @3859 has 5 MA's), (Start: 20 @3886 has 131 MA's), (27, 3946), (31, 3994),

Gene: Edison31_8 Start: 3905, Stop: 4159, Start Num: 20
Candidate Starts for Edison31_8:
(Start: 17 @3878 has 5 MA's), (Start: 20 @3905 has 131 MA's), (23, 3935), (24, 3941), (39, 4118),

Gene: EpicPhail_10 Start: 4167, Stop: 4421, Start Num: 20
Candidate Starts for EpicPhail_10:

(Start: 20 @4167 has 131 MA's), (31, 4275), (39, 4380),

Gene: EtoileNova_9 Start: 4239, Stop: 4496, Start Num: 20

Candidate Starts for EtoileNova_9:

(Start: 20 @4239 has 131 MA's), (33, 4356), (38, 4440), (41, 4485),

Gene: Farber_10 Start: 4160, Stop: 4414, Start Num: 20

Candidate Starts for Farber_10:

(Start: 20 @4160 has 131 MA's), (31, 4268),

Gene: Fernando_10 Start: 4165, Stop: 4419, Start Num: 20

Candidate Starts for Fernando_10:

(Start: 20 @4165 has 131 MA's), (31, 4273),

Gene: Fred313_8 Start: 3633, Stop: 3881, Start Num: 20

Candidate Starts for Fred313_8:

(10, 3573), (Start: 20 @3633 has 131 MA's), (25, 3687), (26, 3690), (27, 3699), (31, 3747),

Gene: Gemma_10 Start: 4202, Stop: 4456, Start Num: 20

Candidate Starts for Gemma_10:

(Start: 20 @4202 has 131 MA's), (31, 4310),

Gene: GingkoMaracino_10 Start: 4032, Stop: 4286, Start Num: 20

Candidate Starts for GingkoMaracino_10:

(1, 3837), (2, 3912), (11, 3978), (Start: 20 @4032 has 131 MA's), (31, 4140),

Gene: Giroux_9 Start: 3932, Stop: 4180, Start Num: 20

Candidate Starts for Giroux_9:

(Start: 20 @3932 has 131 MA's), (25, 3986), (26, 3989), (27, 3998), (31, 4046), (34, 4067),

Gene: Goose_8 Start: 3892, Stop: 4146, Start Num: 20

Candidate Starts for Goose_8:

(11, 3829), (Start: 20 @3892 has 131 MA's), (38, 4093),

Gene: Grif_10 Start: 4250, Stop: 4504, Start Num: 20

Candidate Starts for Grif_10:

(Start: 20 @4250 has 131 MA's), (31, 4358), (39, 4463),

Gene: Groupthink_11 Start: 4202, Stop: 4456, Start Num: 20

Candidate Starts for Groupthink_11:

(Start: 20 @4202 has 131 MA's), (31, 4310),

Gene: Grub_10 Start: 4159, Stop: 4413, Start Num: 20

Candidate Starts for Grub_10:

(Start: 20 @4159 has 131 MA's), (31, 4267),

Gene: Grum1_10 Start: 4160, Stop: 4414, Start Num: 20

Candidate Starts for Grum1_10:

(Start: 20 @4160 has 131 MA's), (31, 4268), (39, 4373),

Gene: GtownJaz_10 Start: 4168, Stop: 4422, Start Num: 20

Candidate Starts for GtownJaz_10:

(Start: 20 @4168 has 131 MA's), (31, 4276),

Gene: Gwennie_9 Start: 4167, Stop: 4421, Start Num: 20

Candidate Starts for Gwennie_9:

(Start: 20 @4167 has 131 MA's), (31, 4275), (39, 4380),

Gene: HashRod_11 Start: 4251, Stop: 4505, Start Num: 20

Candidate Starts for HashRod_11:

(Start: 20 @4251 has 131 MA's), (31, 4359), (39, 4464),

Gene: HaveUMetTed_11 Start: 4202, Stop: 4456, Start Num: 20

Candidate Starts for HaveUMetTed_11:

(Start: 20 @4202 has 131 MA's), (31, 4310),

Gene: Heathen_8 Start: 3734, Stop: 3979, Start Num: 21

Candidate Starts for Heathen_8:

(Start: 21 @3734 has 3 MA's), (25, 3785), (26, 3788), (27, 3797), (31, 3845),

Gene: HelDan_8 Start: 3986, Stop: 4231, Start Num: 21

Candidate Starts for HelDan_8:

(Start: 21 @3986 has 3 MA's), (25, 4037), (26, 4040), (27, 4049), (31, 4097), (32, 4100),

Gene: Heliosoles_10 Start: 4202, Stop: 4456, Start Num: 20

Candidate Starts for Heliosoles_10:

(Start: 20 @4202 has 131 MA's), (31, 4310),

Gene: Hercules11_10 Start: 4174, Stop: 4428, Start Num: 20

Candidate Starts for Hercules11_10:

(Start: 20 @4174 has 131 MA's), (31, 4282),

Gene: Hookmount_9 Start: 4236, Stop: 4493, Start Num: 20

Candidate Starts for Hookmount_9:

(Start: 20 @4236 has 131 MA's), (33, 4353), (38, 4437), (41, 4482),

Gene: Idleandcovert_8 Start: 3932, Stop: 4180, Start Num: 20

Candidate Starts for Idleandcovert_8:

(Start: 20 @3932 has 131 MA's), (25, 3986), (26, 3989), (27, 3998), (31, 4046), (34, 4067),

Gene: IronMan_10 Start: 5925, Stop: 6173, Start Num: 20

Candidate Starts for IronMan_10:

(4, 5808), (Start: 20 @5925 has 131 MA's), (31, 6033),

Gene: Isca_8 Start: 3778, Stop: 4050, Start Num: 17

Candidate Starts for Isca_8:

(Start: 17 @3778 has 5 MA's), (Start: 20 @3805 has 131 MA's), (25, 3856), (26, 3859), (27, 3868), (31, 3916),

Gene: JF2_8 Start: 3569, Stop: 3817, Start Num: 20

Candidate Starts for JF2_8:

(Start: 17 @3542 has 5 MA's), (Start: 20 @3569 has 131 MA's), (25, 3623), (27, 3635), (31, 3683), (33, 3692), (35, 3707),

Gene: JF4_8 Start: 3569, Stop: 3817, Start Num: 20

Candidate Starts for JF4_8:

(Start: 17 @3542 has 5 MA's), (Start: 20 @3569 has 131 MA's), (25, 3623), (27, 3635), (31, 3683), (33, 3692), (35, 3707),

Gene: JHC117_10 Start: 4165, Stop: 4419, Start Num: 20
Candidate Starts for JHC117_10:
(Start: 20 @4165 has 131 MA's), (31, 4273),

Gene: Jaan_11 Start: 6291, Stop: 6539, Start Num: 20
Candidate Starts for Jaan_11:
(Start: 20 @6291 has 131 MA's), (31, 6399),

Gene: JenCasNa_10 Start: 4165, Stop: 4419, Start Num: 20
Candidate Starts for JenCasNa_10:
(Start: 20 @4165 has 131 MA's), (31, 4273),

Gene: JeppNRM_11 Start: 4200, Stop: 4454, Start Num: 20
Candidate Starts for JeppNRM_11:
(Start: 20 @4200 has 131 MA's), (31, 4308),

Gene: Jobu08_10 Start: 4230, Stop: 4484, Start Num: 20
Candidate Starts for Jobu08_10:
(1, 4035), (2, 4110), (11, 4176), (Start: 20 @4230 has 131 MA's), (31, 4338),

Gene: KADY_11 Start: 4251, Stop: 4505, Start Num: 20
Candidate Starts for KADY_11:
(Start: 20 @4251 has 131 MA's), (31, 4359), (39, 4464),

Gene: Kachowdy_8 Start: 3986, Stop: 4231, Start Num: 21
Candidate Starts for Kachowdy_8:
(Start: 21 @3986 has 3 MA's), (25, 4037), (26, 4040), (27, 4049), (31, 4097),

Gene: Kalb97_11 Start: 4200, Stop: 4454, Start Num: 20
Candidate Starts for Kalb97_11:
(Start: 20 @4200 has 131 MA's), (31, 4308),

Gene: Kalnoky_11 Start: 4202, Stop: 4456, Start Num: 20
Candidate Starts for Kalnoky_11:
(Start: 20 @4202 has 131 MA's), (31, 4310),

Gene: Kimona_5 Start: 1675, Stop: 1980, Start Num: 15
Candidate Starts for Kimona_5:
(12, 1651), (Start: 15 @1675 has 7 MA's), (25, 1774), (36, 1897),

Gene: KittenMittens_7 Start: 1977, Stop: 2285, Start Num: 15
Candidate Starts for KittenMittens_7:
(Start: 15 @1977 has 7 MA's), (25, 2076), (33, 2145),

Gene: Kremtemulon_7 Start: 3781, Stop: 4029, Start Num: 20
Candidate Starts for Kremtemulon_7:
(3, 3661), (6, 3691), (Start: 20 @3781 has 131 MA's), (27, 3841), (31, 3889),

Gene: Kristoff_9 Start: 4071, Stop: 4325, Start Num: 20
Candidate Starts for Kristoff_9:

(Start: 17 @4044 has 5 MA's), (Start: 20 @4071 has 131 MA's), (23, 4101), (24, 4107), (39, 4284),

Gene: LBerry_10 Start: 4167, Stop: 4421, Start Num: 20

Candidate Starts for LBerry_10:

(Start: 20 @4167 has 131 MA's), (31, 4275), (39, 4380),

Gene: Labelle_39 Start: 33548, Stop: 33850, Start Num: 16

Candidate Starts for Labelle_39:

(8, 33509), (13, 33539), (Start: 16 @33548 has 3 MA's), (19, 33581), (22, 33593), (28, 33674), (30, 33686), (36, 33761), (39, 33803),

Gene: Lambert1_9 Start: 4236, Stop: 4493, Start Num: 20

Candidate Starts for Lambert1_9:

(Start: 20 @4236 has 131 MA's), (33, 4353), (38, 4437), (41, 4482),

Gene: Landor_9 Start: 5964, Stop: 6212, Start Num: 20

Candidate Starts for Landor_9:

(6, 5874), (11, 5910), (Start: 20 @5964 has 131 MA's), (31, 6072),

Gene: LarryKay_10 Start: 4250, Stop: 4504, Start Num: 20

Candidate Starts for LarryKay_10:

(Start: 20 @4250 has 131 MA's), (31, 4358), (39, 4463),

Gene: Lilith_10 Start: 4160, Stop: 4414, Start Num: 20

Candidate Starts for Lilith_10:

(Start: 20 @4160 has 131 MA's), (31, 4268),

Gene: Louie6_10 Start: 4251, Stop: 4505, Start Num: 20

Candidate Starts for Louie6_10:

(Start: 20 @4251 has 131 MA's), (31, 4359), (39, 4464),

Gene: Lowa_10 Start: 4159, Stop: 4413, Start Num: 20

Candidate Starts for Lowa_10:

(Start: 20 @4159 has 131 MA's), (31, 4267),

Gene: LugYA_12 Start: 4165, Stop: 4419, Start Num: 20

Candidate Starts for LugYA_12:

(Start: 20 @4165 has 131 MA's), (31, 4273),

Gene: MA5_8 Start: 3545, Stop: 3790, Start Num: 21

Candidate Starts for MA5_8:

(7, 3452), (Start: 21 @3545 has 3 MA's), (25, 3596), (27, 3608), (31, 3656),

Gene: MK4_8 Start: 3803, Stop: 4051, Start Num: 20

Candidate Starts for MK4_8:

(Start: 17 @3776 has 5 MA's), (Start: 20 @3803 has 131 MA's), (25, 3857), (27, 3869), (31, 3917), (33, 3926), (35, 3941),

Gene: MadMarie_10 Start: 4169, Stop: 4423, Start Num: 20

Candidate Starts for MadMarie_10:

(Start: 20 @4169 has 131 MA's), (31, 4277),

Gene: Madruga_38 Start: 33216, Stop: 33518, Start Num: 16

Candidate Starts for Madruga_38:

(13, 33207), (Start: 16 @33216 has 3 MA's), (19, 33249), (22, 33261), (28, 33342), (30, 33354), (36, 33429), (39, 33471),

Gene: Mainiac_10 Start: 4160, Stop: 4414, Start Num: 20

Candidate Starts for Mainiac_10:

(Start: 20 @4160 has 131 MA's), (31, 4268),

Gene: Malinsilva_12 Start: 4159, Stop: 4413, Start Num: 20

Candidate Starts for Malinsilva_12:

(Start: 20 @4159 has 131 MA's), (31, 4267),

Gene: Manu_11 Start: 4202, Stop: 4456, Start Num: 20

Candidate Starts for Manu_11:

(Start: 20 @4202 has 131 MA's), (31, 4310),

Gene: MarQuardt_10 Start: 4168, Stop: 4422, Start Num: 20

Candidate Starts for MarQuardt_10:

(Start: 20 @4168 has 131 MA's), (31, 4276),

Gene: Marchesa_8 Start: 3986, Stop: 4231, Start Num: 21

Candidate Starts for Marchesa_8:

(Start: 21 @3986 has 3 MA's), (25, 4037), (26, 4040), (27, 4049), (31, 4097),

Gene: Margo_9 Start: 4261, Stop: 4518, Start Num: 20

Candidate Starts for Margo_9:

(Start: 20 @4261 has 131 MA's), (33, 4378), (38, 4462), (41, 4507),

Gene: Marie_10 Start: 4165, Stop: 4419, Start Num: 20

Candidate Starts for Marie_10:

(Start: 20 @4165 has 131 MA's), (31, 4273),

Gene: Marius_11 Start: 4202, Stop: 4456, Start Num: 20

Candidate Starts for Marius_11:

(Start: 20 @4202 has 131 MA's), (31, 4310),

Gene: Methuselah_10 Start: 4250, Stop: 4504, Start Num: 20

Candidate Starts for Methuselah_10:

(Start: 20 @4250 has 131 MA's), (31, 4358), (39, 4463),

Gene: Microwolf_10 Start: 4168, Stop: 4422, Start Num: 20

Candidate Starts for Microwolf_10:

(Start: 20 @4168 has 131 MA's), (31, 4276),

Gene: Misomonster_12 Start: 4250, Stop: 4504, Start Num: 20

Candidate Starts for Misomonster_12:

(Start: 20 @4250 has 131 MA's), (31, 4358), (39, 4463),

Gene: MoneyMay_10 Start: 4165, Stop: 4419, Start Num: 20

Candidate Starts for MoneyMay_10:

(Start: 20 @4165 has 131 MA's), (31, 4273),

Gene: Montavir_9 Start: 4167, Stop: 4421, Start Num: 20

Candidate Starts for Montavir_9:
(Start: 20 @4167 has 131 MA's), (31, 4275), (39, 4380),

Gene: MuchMore_12 Start: 4159, Stop: 4413, Start Num: 20
Candidate Starts for MuchMore_12:
(Start: 20 @4159 has 131 MA's), (31, 4267),

Gene: Noella_9 Start: 4236, Stop: 4493, Start Num: 20
Candidate Starts for Noella_9:
(Start: 20 @4236 has 131 MA's), (33, 4353), (38, 4437), (41, 4482),

Gene: Norbert_8 Start: 4236, Stop: 4493, Start Num: 20
Candidate Starts for Norbert_8:
(Start: 20 @4236 has 131 MA's), (33, 4353), (38, 4437), (41, 4482),

Gene: OKCentral2016_8 Start: 3592, Stop: 3846, Start Num: 20
Candidate Starts for OKCentral2016_8:
(11, 3529), (Start: 20 @3592 has 131 MA's), (38, 3793),

Gene: OlanP_10 Start: 4382, Stop: 4636, Start Num: 20
Candidate Starts for OlanP_10:
(Start: 20 @4382 has 131 MA's), (31, 4490),

Gene: Ollie_10 Start: 4032, Stop: 4286, Start Num: 20
Candidate Starts for Ollie_10:
(1, 3837), (2, 3912), (11, 3978), (Start: 20 @4032 has 131 MA's), (31, 4140),

Gene: P28Green_10 Start: 4166, Stop: 4420, Start Num: 20
Candidate Starts for P28Green_10:
(Start: 20 @4166 has 131 MA's), (31, 4274),

Gene: PGHhamlin_12 Start: 4159, Stop: 4413, Start Num: 20
Candidate Starts for PGHhamlin_12:
(Start: 20 @4159 has 131 MA's), (31, 4267),

Gene: Panamaxus_9 Start: 4236, Stop: 4493, Start Num: 20
Candidate Starts for Panamaxus_9:
(Start: 20 @4236 has 131 MA's), (33, 4353), (38, 4437), (41, 4482),

Gene: Patience_40 Start: 34097, Stop: 34399, Start Num: 16
Candidate Starts for Patience_40:
(13, 34088), (Start: 16 @34097 has 3 MA's), (19, 34130), (22, 34142), (28, 34223), (30, 34235), (36, 34310), (39, 34352),

Gene: Pawn_10 Start: 4202, Stop: 4456, Start Num: 20
Candidate Starts for Pawn_10:
(Start: 20 @4202 has 131 MA's), (31, 4310),

Gene: PeaceMeal1_7 Start: 1978, Stop: 2286, Start Num: 15
Candidate Starts for PeaceMeal1_7:
(Start: 15 @1978 has 7 MA's), (25, 2077), (31, 2137), (33, 2146),

Gene: Pembroke_10 Start: 4168, Stop: 4422, Start Num: 20

Candidate Starts for Pembroke_10:
(Start: 20 @4168 has 131 MA's), (31, 4276),

Gene: Penny1_10 Start: 4167, Stop: 4421, Start Num: 20
Candidate Starts for Penny1_10:
(Start: 20 @4167 has 131 MA's), (31, 4275), (39, 4380),

Gene: Phaded_11 Start: 6290, Stop: 6538, Start Num: 20
Candidate Starts for Phaded_11:
(Start: 20 @6290 has 131 MA's), (31, 6398),

Gene: Phantastic_8 Start: 3876, Stop: 4148, Start Num: 17
Candidate Starts for Phantastic_8:
(Start: 17 @3876 has 5 MA's), (Start: 20 @3903 has 131 MA's), (25, 3954), (27, 3966), (31, 4014), (34, 4035),

Gene: PhishRPhriends_9 Start: 3393, Stop: 3647, Start Num: 20
Candidate Starts for PhishRPhriends_9:
(Start: 20 @3393 has 131 MA's), (31, 3501),

Gene: Phoebe_10 Start: 4165, Stop: 4419, Start Num: 20
Candidate Starts for Phoebe_10:
(Start: 20 @4165 has 131 MA's), (31, 4273),

Gene: Phoxy_10 Start: 4251, Stop: 4505, Start Num: 20
Candidate Starts for Phoxy_10:
(Start: 20 @4251 has 131 MA's), (31, 4359), (39, 4464),

Gene: Phranny_11 Start: 4200, Stop: 4454, Start Num: 20
Candidate Starts for Phranny_11:
(Start: 20 @4200 has 131 MA's), (31, 4308),

Gene: Pistachio_9 Start: 3479, Stop: 3727, Start Num: 20
Candidate Starts for Pistachio_9:
(Start: 20 @3479 has 131 MA's), (25, 3533), (26, 3536), (27, 3545), (31, 3593), (34, 3614),

Gene: Pocahontas_9 Start: 4236, Stop: 4493, Start Num: 20
Candidate Starts for Pocahontas_9:
(Start: 20 @4236 has 131 MA's), (33, 4353), (38, 4437), (41, 4482),

Gene: Poompha_7 Start: 1976, Stop: 2284, Start Num: 15
Candidate Starts for Poompha_7:
(Start: 15 @1976 has 7 MA's), (25, 2075), (31, 2135), (33, 2144),

Gene: Popcicle_9 Start: 4236, Stop: 4493, Start Num: 20
Candidate Starts for Popcicle_9:
(Start: 20 @4236 has 131 MA's), (33, 4353), (38, 4437), (41, 4482),

Gene: PotatoSplit_11 Start: 4167, Stop: 4421, Start Num: 20
Candidate Starts for PotatoSplit_11:
(Start: 20 @4167 has 131 MA's), (31, 4275), (39, 4380),

Gene: Pukovnik_10 Start: 5875, Stop: 6123, Start Num: 20

Candidate Starts for Pukovnik_10:

(Start: 20 @5875 has 131 MA's), (27, 5935), (29, 5968), (31, 5983),

Gene: Puppy_9 Start: 3551, Stop: 3799, Start Num: 20

Candidate Starts for Puppy_9:

(Start: 20 @3551 has 131 MA's), (25, 3605), (26, 3608), (27, 3617), (31, 3665), (34, 3686),

Gene: PurpleHaze_10 Start: 4201, Stop: 4455, Start Num: 20

Candidate Starts for PurpleHaze_10:

(Start: 20 @4201 has 131 MA's), (31, 4309),

Gene: QuinnKiro_8 Start: 4236, Stop: 4493, Start Num: 20

Candidate Starts for QuinnKiro_8:

(Start: 20 @4236 has 131 MA's), (33, 4353), (38, 4437), (41, 4482),

Gene: Reba_11 Start: 3873, Stop: 4127, Start Num: 20

Candidate Starts for Reba_11:

(Start: 20 @3873 has 131 MA's), (31, 3981),

Gene: Rebeuca_9 Start: 4072, Stop: 4326, Start Num: 20

Candidate Starts for Rebeuca_9:

(Start: 17 @4045 has 5 MA's), (Start: 20 @4072 has 131 MA's), (23, 4102), (24, 4108), (39, 4285),

Gene: ResDef_9 Start: 4236, Stop: 4493, Start Num: 20

Candidate Starts for ResDef_9:

(Start: 20 @4236 has 131 MA's), (33, 4353), (38, 4437), (41, 4482),

Gene: RhynO_9 Start: 4035, Stop: 4289, Start Num: 20

Candidate Starts for RhynO_9:

(Start: 20 @4035 has 131 MA's), (37, 4221),

Gene: Rockstar_8 Start: 3776, Stop: 4051, Start Num: 17

Candidate Starts for Rockstar_8:

(Start: 17 @3776 has 5 MA's), (Start: 20 @3803 has 131 MA's), (25, 3857), (27, 3869), (31, 3917), (33, 3926), (35, 3941),

Gene: Roimos_8 Start: 3899, Stop: 4147, Start Num: 20

Candidate Starts for Roimos_8:

(10, 3839), (Start: 20 @3899 has 131 MA's), (25, 3953), (26, 3956), (27, 3965), (31, 4013),

Gene: Rowdy_11 Start: 3946, Stop: 4200, Start Num: 20

Candidate Starts for Rowdy_11:

(Start: 20 @3946 has 131 MA's), (37, 4132),

Gene: Rummer_10 Start: 4251, Stop: 4505, Start Num: 20

Candidate Starts for Rummer_10:

(Start: 20 @4251 has 131 MA's), (31, 4359), (39, 4464),

Gene: Sabia_10 Start: 4160, Stop: 4414, Start Num: 20

Candidate Starts for Sabia_10:

(Start: 20 @4160 has 131 MA's), (31, 4268),

Gene: Sabinator_10 Start: 4165, Stop: 4419, Start Num: 20

Candidate Starts for Sabinator_10:
(Start: 20 @4165 has 131 MA's), (31, 4273),

Gene: SaturnRing_8 Start: 3932, Stop: 4180, Start Num: 20
Candidate Starts for SaturnRing_8:
(Start: 20 @3932 has 131 MA's), (25, 3986), (26, 3989), (27, 3998), (31, 4046), (34, 4067),

Gene: Scout_8 Start: 3225, Stop: 3473, Start Num: 20
Candidate Starts for Scout_8:
(10, 3165), (Start: 20 @3225 has 131 MA's), (25, 3279), (26, 3282), (27, 3291), (31, 3339),

Gene: Severus_7 Start: 1976, Stop: 2284, Start Num: 15
Candidate Starts for Severus_7:
(Start: 15 @1976 has 7 MA's), (25, 2075), (31, 2135), (33, 2144),

Gene: Shapes_11 Start: 3946, Stop: 4200, Start Num: 20
Candidate Starts for Shapes_11:
(Start: 20 @3946 has 131 MA's), (37, 4132),

Gene: Snickers_10 Start: 4141, Stop: 4395, Start Num: 20
Candidate Starts for Snickers_10:
(Start: 20 @4141 has 131 MA's), (31, 4249),

Gene: SoYo_10 Start: 4078, Stop: 4332, Start Num: 20
Candidate Starts for SoYo_10:
(Start: 20 @4078 has 131 MA's), (31, 4186),

Gene: SoilDragon_10 Start: 3840, Stop: 4094, Start Num: 20
Candidate Starts for SoilDragon_10:
(1, 3645), (2, 3720), (11, 3786), (Start: 20 @3840 has 131 MA's), (31, 3948),

Gene: Soshari_12 Start: 4250, Stop: 4504, Start Num: 20
Candidate Starts for Soshari_12:
(Start: 20 @4250 has 131 MA's), (31, 4358), (39, 4463),

Gene: Spike509_10 Start: 4251, Stop: 4505, Start Num: 20
Candidate Starts for Spike509_10:
(Start: 20 @4251 has 131 MA's), (31, 4359), (39, 4464),

Gene: Stagni_10 Start: 4169, Stop: 4423, Start Num: 20
Candidate Starts for Stagni_10:
(Start: 20 @4169 has 131 MA's), (31, 4277),

Gene: Stasia_8 Start: 4097, Stop: 4345, Start Num: 20
Candidate Starts for Stasia_8:
(Start: 20 @4097 has 131 MA's), (27, 4157), (31, 4205),

Gene: StepMih_10 Start: 4160, Stop: 4414, Start Num: 20
Candidate Starts for StepMih_10:
(Start: 20 @4160 has 131 MA's), (31, 4268),

Gene: SuperSonics_39 Start: 33273, Stop: 33575, Start Num: 16
Candidate Starts for SuperSonics_39:

(13, 33264), (Start: 16 @33273 has 3 MA's), (19, 33306), (22, 33318), (28, 33399), (30, 33411), (36, 33486), (39, 33528),

Gene: TNguyen7_8 Start: 3902, Stop: 4150, Start Num: 20

Candidate Starts for TNguyen7_8:

(10, 3842), (Start: 20 @3902 has 131 MA's), (25, 3956), (26, 3959), (27, 3968), (31, 4016),

Gene: Taurus_10 Start: 4165, Stop: 4419, Start Num: 20

Candidate Starts for Taurus_10:

(Start: 20 @4165 has 131 MA's), (31, 4273),

Gene: Texage_8 Start: 4236, Stop: 4493, Start Num: 20

Candidate Starts for Texage_8:

(Start: 20 @4236 has 131 MA's), (33, 4353), (38, 4437), (41, 4482),

Gene: Tiffany_10 Start: 4061, Stop: 4315, Start Num: 20

Candidate Starts for Tiffany_10:

(Start: 20 @4061 has 131 MA's), (31, 4169),

Gene: TinyPebbles_10 Start: 4250, Stop: 4504, Start Num: 20

Candidate Starts for TinyPebbles_10:

(Start: 20 @4250 has 131 MA's), (31, 4358), (39, 4463),

Gene: Todacoro_9 Start: 4236, Stop: 4493, Start Num: 20

Candidate Starts for Todacoro_9:

(Start: 20 @4236 has 131 MA's), (33, 4353), (38, 4437), (41, 4482),

Gene: Topanga_8 Start: 3980, Stop: 4261, Start Num: 17

Candidate Starts for Topanga_8:

(Start: 17 @3980 has 5 MA's), (Start: 20 @4007 has 131 MA's), (23, 4037), (24, 4043), (39, 4220),

Gene: Trike_6 Start: 1968, Stop: 2276, Start Num: 15

Candidate Starts for Trike_6:

(Start: 15 @1968 has 7 MA's), (25, 2067), (31, 2127), (33, 2136),

Gene: Tristan_9 Start: 5968, Stop: 6216, Start Num: 20

Candidate Starts for Tristan_9:

(11, 5914), (Start: 20 @5968 has 131 MA's), (31, 6076),

Gene: Twister_8 Start: 3906, Stop: 4160, Start Num: 20

Candidate Starts for Twister_8:

(Start: 17 @3879 has 5 MA's), (Start: 20 @3906 has 131 MA's), (39, 4119),

Gene: Ulysses_6 Start: 3422, Stop: 3670, Start Num: 20

Candidate Starts for Ulysses_6:

(Start: 20 @3422 has 131 MA's), (27, 3482), (31, 3530), (35, 3566), (40, 3647),

Gene: Veracruz_8 Start: 4236, Stop: 4493, Start Num: 20

Candidate Starts for Veracruz_8:

(Start: 20 @4236 has 131 MA's), (33, 4353), (38, 4437), (41, 4482),

Gene: Vix_10 Start: 4249, Stop: 4503, Start Num: 20

Candidate Starts for Vix_10:

(Start: 20 @4249 has 131 MA's), (31, 4357), (39, 4462),

Gene: WalterMcMickey_8 Start: 3906, Stop: 4160, Start Num: 20

Candidate Starts for WalterMcMickey_8:

(Start: 17 @3879 has 5 MA's), (Start: 20 @3906 has 131 MA's), (39, 4119),

Gene: Watson_10 Start: 4159, Stop: 4413, Start Num: 20

Candidate Starts for Watson_10:

(Start: 20 @4159 has 131 MA's), (31, 4267),

Gene: Wooldri_12 Start: 4078, Stop: 4332, Start Num: 20

Candidate Starts for Wooldri_12:

(Start: 20 @4078 has 131 MA's), (31, 4186),

Gene: Zarafa_8 Start: 3995, Stop: 4240, Start Num: 21

Candidate Starts for Zarafa_8:

(Start: 21 @3995 has 3 MA's), (25, 4046), (26, 4049), (27, 4058), (31, 4106),

Gene: Zetzy_9 Start: 3726, Stop: 3980, Start Num: 20

Candidate Starts for Zetzy_9:

(9, 3666), (18, 3702), (Start: 20 @3726 has 131 MA's),