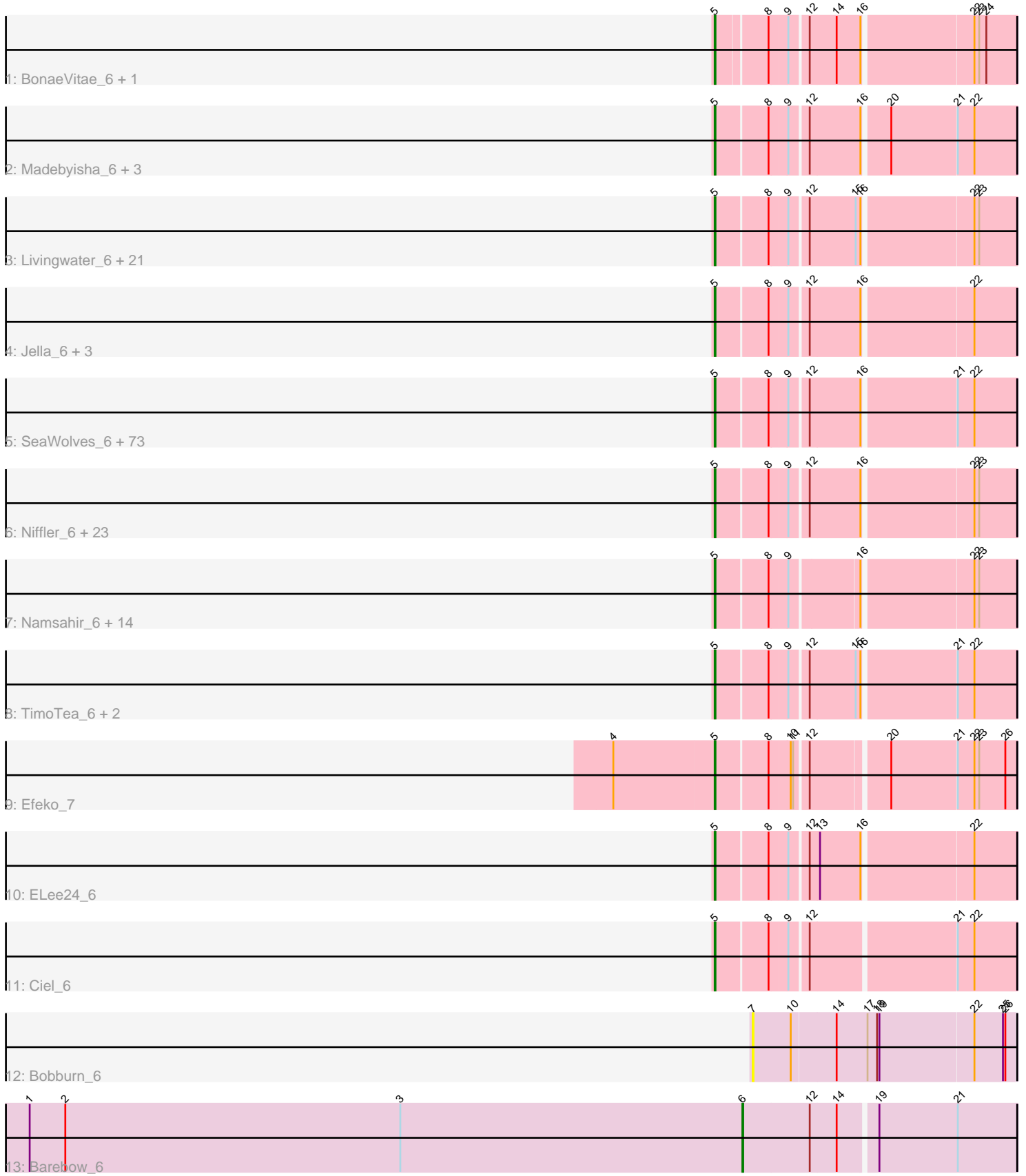


Pham 308195



Note: Tracks are now grouped by subcluster and scaled. Switching in subcluster is indicated by changes in track color. Track scale is now set by default to display the region 30 bp upstream of start 1 to 30 bp downstream of the last possible start. If this default region is judged to be packed too tightly with annotated starts, the track will be further scaled to only show that region of the ORF with annotated starts. This action will be indicated by adding "Zoomed" to the title. For starts, yellow indicates the location of called starts comprised solely of Glimmer/GeneMark auto-annotations, green indicates the location of called starts with at least 1 manual gene annotation.

## Pham 308195 Report

This analysis was run 06/27/26 on database version 652.

Pham number 308195 has 153 members, 7 are drafts.

Phages represented in each track:

- Track 1 : BonaeVitae\_6, Naby\_6
- Track 2 : Madebyisha\_6, VitulaEligans\_6, OdetoJoy\_6, Jerky\_6
- Track 3 : Livingwater\_6, Douggie\_6, MrGreen\_6, SantasSleigh\_6, Quaker\_6, MelBee03\_6, Sippinontea\_6, RoscoWindex\_6, Zahlia\_6, Otwor\_6, Belthelas\_6, Kevanna\_6, LaviMo\_6, Bodhi17\_6, Grayscar\_6, Josuke\_6, Sage7\_6, Rhysand\_6, Vanisius\_6, Wolfpack\_6, Cheesecake\_6, KayPaulus\_6
- Track 4 : Jella\_6, Luxx\_6, Biscayne\_6, Hulk\_6
- Track 5 : SeaWolves\_6, Alucard\_6, Majesty\_6, Goobery\_6, Erin\_6, Burgy\_6, Scamander\_6, Sachet\_6, Minima\_6, Lola20\_6, JoBros\_6, ManAs\_6, Jahseh\_6, Yasuo\_6, Goulash\_6, NeumannU\_6, Horacetta\_6, Eightball\_6, Gabbspett\_6, Gillker\_6, Avvas\_6, Owens\_6, Gardevoir\_6, DirtPie\_6, Cayde6\_6, Dooby\_6, Bradley2\_6, Aztec\_6, Jannah\_6, Dongwon\_6, TeddyBoy\_6, LionelHutz\_6, Concrete\_6, GoldenBlanche\_6, Bri160\_6, JaimeB\_6, Tyrellus\_6, Marichuy\_6, Picnic\_6, Myram\_6, DaftyDuck\_6, Sara\_6, Slentz\_6, Aries55\_6, Rhogar\_6, Puddles3\_6, KyriosFaba\_6, PaoPu\_6, Witch\_6, LemonPepper\_6, Pondwater\_6, Anseraureola\_6, Kojax4\_6, MasterPitts\_6, Yubaba\_6, BurtonThePup\_6, BarBear\_6, YertPhresh\_6, Octopus\_6, Danno\_6, Godfather\_6, Chatham\_6, HeadMave\_6, Danimal\_6, Scrunchy\_6, Duggle\_6, BinkBonk\_6, Loca\_6, Hernandez44\_6, Baine\_6, Picconator\_6, Astro16\_6, EdElric\_6, BoomRoasted\_6
- Track 6 : Niffler\_6, KillerTomato\_6, Nobel\_6, Miaurora\_6, JRok\_6, Trackstar\_6, JooneeDee\_6, BrokMonster\_6, Lunatic\_6, Trireme\_6, TinyTruffula\_6, PoRanda\_6, Bintii\_6, Oaklynn\_6, Cazares\_6, PuffyCat\_6, McShie\_6, MirimarMandM\_6, TlaliMex\_6, Upsilon\_6, Leafy\_6, Yami\_6, Clownery\_6, Azizam\_6
- Track 7 : Namsahir\_6, HarperAnne\_6, Slizam\_6, IzzyPants24\_6, Elspeth\_6, Ekko14\_6, Rira\_6, Kaijohn\_6, TomBrady12\_6, Bullzi2019\_6, Noelani\_6, Snuffles\_7, Stem\_6, Publix\_6, Mauilvory\_6
- Track 8 : TimoTea\_6, Charbie\_6, Maneater\_6
- Track 9 : Efeko\_7
- Track 10 : ELee24\_6
- Track 11 : Ciel\_6
- Track 12 : Bobburn\_6
- Track 13 : Barebow\_6

**Summary of Final Annotations (See graph section above for start numbers):**

The start number called the most often in the published annotations is 5, it was called in 145 of the 146 non-draft genes in the pham.

Genes that call this "Most Annotated" start:

- Alucard\_6, Anseraureola\_6, Aries55\_6, Astro16\_6, Avvas\_6, Azizam\_6, Aztec\_6, Baine\_6, BarBear\_6, Belthelas\_6, BinkBonk\_6, Bintii\_6, Biscayne\_6, Bodhi17\_6, BonaeVitae\_6, BoomRoasted\_6, Bradley2\_6, Bri160\_6, BrokMonster\_6, Bullzi2019\_6, Burgy\_6, BurtonThePup\_6, Cayde6\_6, Cazares\_6, Charbie\_6, Chatham\_6, Cheesecake\_6, Ciel\_6, Clownery\_6, Concrete\_6, DaftyDuck\_6, Danimal\_6, Danno\_6, DirtPie\_6, Dongwon\_6, Dooby\_6, Douggie\_6, Duggle\_6, ELee24\_6, EdElric\_6, Efeko\_7, Eightball\_6, Ekko14\_6, Elspeth\_6, Erin\_6, Gabbspett\_6, Gardevoir\_6, Gillker\_6, Godfather\_6, GoldenBlanche\_6, Goobery\_6, Goulash\_6, Grayscar\_6, HarperAnne\_6, HeadMave\_6, Hernandez44\_6, Horacetta\_6, Hulk\_6, IzzyPants24\_6, JRok\_6, Jahseh\_6, JaimeB\_6, Jannah\_6, Jella\_6, Jerky\_6, JoBros\_6, JooneeDee\_6, Josuke\_6, Kaijohn\_6, KayPaulus\_6, Kevanna\_6, KillerTomato\_6, Kojax4\_6, KyriosFaba\_6, LaviMo\_6, Leafy\_6, LemonPepper\_6, LionelHutz\_6, Livingwater\_6, Loca\_6, Lola20\_6, Lunatic\_6, Luxx\_6, Madebyisha\_6, Majesty\_6, ManAs\_6, Maneater\_6, Marichuy\_6, MasterPitts\_6, Mauilvory\_6, McShie\_6, MelBee03\_6, Miaurora\_6, Minima\_6, MirimarMandM\_6, MrGreen\_6, Myram\_6, Naby\_6, Namsahir\_6, NeumannU\_6, Niffler\_6, Nobel\_6, Noelani\_6, Oaklynn\_6, Octopus\_6, OdetoJoy\_6, Otwor\_6, Owens\_6, PaoPu\_6, Picconator\_6, Picnic\_6, PoRanda\_6, Pondwater\_6, Publix\_6, Puddles3\_6, PuffyCat\_6, Quaker\_6, Rhogar\_6, Rhysand\_6, Rira\_6, RoscoWindex\_6, Sachet\_6, Sage7\_6, SantasSleigh\_6, Sara\_6, Scamander\_6, Scrunchy\_6, SeaWolves\_6, Sippinontea\_6, Slentz\_6, Slizam\_6, Snuffles\_7, Stem\_6, TeddyBoy\_6, TimoTea\_6, TinyTruffula\_6, TlaliMex\_6, TomBrady12\_6, Trackstar\_6, Trireme\_6, Tyrellus\_6, Upsilon\_6, Vanisius\_6, VitulaEligans\_6, Witch\_6, Wolfpack\_6, Yami\_6, Yasuo\_6, YertPhresh\_6, Yubaba\_6, Zahlia\_6,

Genes that have the "Most Annotated" start but do not call it:

- 

Genes that do not have the "Most Annotated" start:

- Barebow\_6, Bobburn\_6,

### Summary by start number:

Start 5:

- Found in 151 of 153 ( 98.7% ) of genes in pham
- Manual Annotations of this start: 145 of 146
- Called 100.0% of time when present
- Phage (with cluster) where this start called: Alucard\_6 (EE), Anseraureola\_6 (EE), Aries55\_6 (EE), Astro16\_6 (EE), Avvas\_6 (EE), Azizam\_6 (EE), Aztec\_6 (EE), Baine\_6 (EE), BarBear\_6 (EE), Belthelas\_6 (EE), BinkBonk\_6 (EE), Bintii\_6 (EE), Biscayne\_6 (EE), Bodhi17\_6 (EE), BonaeVitae\_6 (EE), BoomRoasted\_6 (EE), Bradley2\_6 (EE), Bri160\_6 (EE), BrokMonster\_6 (EE), Bullzi2019\_6 (EE), Burgy\_6 (EE), BurtonThePup\_6 (EE), Cayde6\_6 (EE), Cazares\_6 (EE), Charbie\_6 (EE), Chatham\_6 (EE), Cheesecake\_6 (EE), Ciel\_6 (EE), Clownery\_6 (EE), Concrete\_6 (EE), DaftyDuck\_6 (EE), Danimal\_6 (EE), Danno\_6 (EE), DirtPie\_6 (EE), Dongwon\_6 (EE), Dooby\_6 (EE), Douggie\_6 (EE), Duggle\_6 (EE), ELee24\_6 (EE), EdElric\_6 (EE), Efeko\_7 (EE), Eightball\_6 (EE), Ekko14\_6 (EE), Elspeth\_6 (EE), Erin\_6 (EE), Gabbspett\_6 (EE), Gardevoir\_6 (EE), Gillker\_6 (EE), Godfather\_6 (EE),

GoldenBlanche\_6 (EE), Goobery\_6 (EE), Goulash\_6 (EE), Grayscar\_6 (EE), HarperAnne\_6 (EE), HeadMave\_6 (EE), Hernandez44\_6 (EE), Horacetta\_6 (EE), Hulk\_6 (EE), IzzyPants24\_6 (EE), JRok\_6 (EE), Jahseh\_6 (EE), JaimeB\_6 (EE), Jannah\_6 (EE), Jella\_6 (EE), Jerky\_6 (EE), JoBros\_6 (EE), JooneeDee\_6 (EE), Josuke\_6 (EE), Kaijohn\_6 (EE), KayPaulus\_6 (EE), Kevanna\_6 (EE), KillerTomato\_6 (EE), Kojax4\_6 (EE), KyriosFaba\_6 (EE), LaviMo\_6 (EE), Leafy\_6 (EE), LemonPepper\_6 (EE), LionelHutz\_6 (EE), Livingwater\_6 (EE), Loca\_6 (EE), Lola20\_6 (EE), Lunatic\_6 (EE), Luxx\_6 (EE), Madebyisha\_6 (EE), Majesty\_6 (EE), ManAs\_6 (EE), Maneater\_6 (EE), Marichuy\_6 (EE), MasterPitts\_6 (EE), Mauilvory\_6 (EE), McShie\_6 (EE), MelBee03\_6 (EE), Miaurora\_6 (EE), Minima\_6 (EE), MirimarMandM\_6 (EE), MrGreen\_6 (EE), Myram\_6 (EE), Naby\_6 (EE), Namsahir\_6 (EE), NeumannU\_6 (EE), Niffler\_6 (EE), Nobel\_6 (EE), Noelani\_6 (EE), Oaklynn\_6 (EE), Octopus\_6 (EE), OdetoJoy\_6 (EE), Otwor\_6 (EE), Owens\_6 (EE), PaoPu\_6 (EE), Picconator\_6 (EE), Picnic\_6 (EE), PoRanda\_6 (EE), Pondwater\_6 (EE), Publix\_6 (EE), Puddles3\_6 (EE), PuffyCat\_6 (EE), Quaker\_6 (EE), Rhogar\_6 (EE), Rhysand\_6 (EE), Rira\_6 (EE), RoscoWindex\_6 (EE), Sachet\_6 (EE), Sage7\_6 (EE), SantasSleigh\_6 (EE), Sara\_6 (EE), Scamander\_6 (EE), Scrunchy\_6 (EE), SeaWolves\_6 (EE), Sippinontea\_6 (EE), Slentz\_6 (EE), Slizam\_6 (EE), Snuffles\_7 (EE), Stem\_6 (EE), TeddyBoy\_6 (EE), TimoTea\_6 (EE), TinyTruffula\_6 (EE), TlaliMex\_6 (EE), TomBrady12\_6 (EE), Trackstar\_6 (EE), Trireme\_6 (EE), Tyrellus\_6 (EE), Upsilon\_6 (EE), Vanisius\_6 (EE), VitulaEligans\_6 (EE), Witch\_6 (EE), Wolfpack\_6 (EE), Yami\_6 (EE), Yasuo\_6 (EE), YertPhresh\_6 (EE), Yubaba\_6 (EE), Zahlia\_6 (EE),

Start 6:

- Found in 1 of 153 ( 0.7% ) of genes in pham
- Manual Annotations of this start: 1 of 146
- Called 100.0% of time when present
- Phage (with cluster) where this start called: Barebow\_6 (singleton),

Start 7:

- Found in 1 of 153 ( 0.7% ) of genes in pham
- No Manual Annotations of this start.
- Called 100.0% of time when present
- Phage (with cluster) where this start called: Bobburn\_6 (singleton),

### Summary by clusters:

There are 2 clusters represented in this pham: EE, singleton,

Info for manual annotations of cluster EE:

- Start number 5 was manually annotated 145 times for cluster EE.

### Gene Information:

Gene: Alucard\_6 Start: 5374, Stop: 5727, Start Num: 5

Candidate Starts for Alucard\_6:

(Start: 5 @5374 has 145 MA's), (8, 5437), (9, 5458), (12, 5479), (16, 5542), (21, 5653), (22, 5674),

Gene: Anseraureola\_6 Start: 5397, Stop: 5750, Start Num: 5

Candidate Starts for Anseraureola\_6:

(Start: 5 @5397 has 145 MA's), (8, 5460), (9, 5481), (12, 5502), (16, 5565), (21, 5676), (22, 5697),

Gene: Aries55\_6 Start: 5385, Stop: 5738, Start Num: 5

Candidate Starts for Aries55\_6:

(Start: 5 @5385 has 145 MA's), (8, 5448), (9, 5469), (12, 5490), (16, 5553), (21, 5664), (22, 5685),

Gene: Astro16\_6 Start: 5385, Stop: 5738, Start Num: 5

Candidate Starts for Astro16\_6:

(Start: 5 @5385 has 145 MA's), (8, 5448), (9, 5469), (12, 5490), (16, 5553), (21, 5664), (22, 5685),

Gene: Avvas\_6 Start: 5385, Stop: 5738, Start Num: 5

Candidate Starts for Avvas\_6:

(Start: 5 @5385 has 145 MA's), (8, 5448), (9, 5469), (12, 5490), (16, 5553), (21, 5664), (22, 5685),

Gene: Azizam\_6 Start: 5373, Stop: 5726, Start Num: 5

Candidate Starts for Azizam\_6:

(Start: 5 @5373 has 145 MA's), (8, 5436), (9, 5457), (12, 5478), (16, 5541), (22, 5673), (23, 5679),

Gene: Aztec\_6 Start: 5373, Stop: 5726, Start Num: 5

Candidate Starts for Aztec\_6:

(Start: 5 @5373 has 145 MA's), (8, 5436), (9, 5457), (12, 5478), (16, 5541), (21, 5652), (22, 5673),

Gene: Baine\_6 Start: 5370, Stop: 5723, Start Num: 5

Candidate Starts for Baine\_6:

(Start: 5 @5370 has 145 MA's), (8, 5433), (9, 5454), (12, 5475), (16, 5538), (21, 5649), (22, 5670),

Gene: BarBear\_6 Start: 5385, Stop: 5738, Start Num: 5

Candidate Starts for BarBear\_6:

(Start: 5 @5385 has 145 MA's), (8, 5448), (9, 5469), (12, 5490), (16, 5553), (21, 5664), (22, 5685),

Gene: Barebow\_6 Start: 4989, Stop: 5321, Start Num: 6

Candidate Starts for Barebow\_6:

(1, 4089), (2, 4134), (3, 4557), (Start: 6 @4989 has 1 MA's), (12, 5073), (14, 5106), (19, 5148), (21, 5247),

Gene: Belthelas\_6 Start: 5424, Stop: 5777, Start Num: 5

Candidate Starts for Belthelas\_6:

(Start: 5 @5424 has 145 MA's), (8, 5487), (9, 5508), (12, 5529), (15, 5586), (16, 5592), (22, 5724), (23, 5730),

Gene: BinkBonk\_6 Start: 5385, Stop: 5738, Start Num: 5

Candidate Starts for BinkBonk\_6:

(Start: 5 @5385 has 145 MA's), (8, 5448), (9, 5469), (12, 5490), (16, 5553), (21, 5664), (22, 5685),

Gene: Bintii\_6 Start: 5403, Stop: 5753, Start Num: 5

Candidate Starts for Bintii\_6:

(Start: 5 @5403 has 145 MA's), (8, 5466), (9, 5487), (12, 5508), (16, 5568), (22, 5700), (23, 5706),

Gene: Biscayne\_6 Start: 5431, Stop: 5784, Start Num: 5

Candidate Starts for Biscayne\_6:

(Start: 5 @5431 has 145 MA's), (8, 5494), (9, 5515), (12, 5536), (16, 5599), (22, 5731),

Gene: Bobburn\_6 Start: 4949, Stop: 5272, Start Num: 7

Candidate Starts for Bobburn\_6:  
(7, 4949), (10, 4997), (14, 5051), (17, 5090), (18, 5102), (19, 5105), (22, 5222), (25, 5258), (26, 5261),

Gene: Bodhi17\_6 Start: 5367, Stop: 5720, Start Num: 5

Candidate Starts for Bodhi17\_6:  
(Start: 5 @5367 has 145 MA's), (8, 5430), (9, 5451), (12, 5472), (15, 5529), (16, 5535), (22, 5667), (23, 5673),

Gene: BonaeVitae\_6 Start: 5108, Stop: 5458, Start Num: 5

Candidate Starts for BonaeVitae\_6:  
(Start: 5 @5108 has 145 MA's), (8, 5168), (9, 5189), (12, 5210), (14, 5243), (16, 5273), (22, 5405), (23, 5411), (24, 5420),

Gene: BoomRoasted\_6 Start: 5421, Stop: 5774, Start Num: 5

Candidate Starts for BoomRoasted\_6:  
(Start: 5 @5421 has 145 MA's), (8, 5484), (9, 5505), (12, 5526), (16, 5589), (21, 5700), (22, 5721),

Gene: Bradley2\_6 Start: 5373, Stop: 5726, Start Num: 5

Candidate Starts for Bradley2\_6:  
(Start: 5 @5373 has 145 MA's), (8, 5436), (9, 5457), (12, 5478), (16, 5541), (21, 5652), (22, 5673),

Gene: Bri160\_6 Start: 5421, Stop: 5774, Start Num: 5

Candidate Starts for Bri160\_6:  
(Start: 5 @5421 has 145 MA's), (8, 5484), (9, 5505), (12, 5526), (16, 5589), (21, 5700), (22, 5721),

Gene: BrokMonster\_6 Start: 5373, Stop: 5726, Start Num: 5

Candidate Starts for BrokMonster\_6:  
(Start: 5 @5373 has 145 MA's), (8, 5436), (9, 5457), (12, 5478), (16, 5541), (22, 5673), (23, 5679),

Gene: Bullzi2019\_6 Start: 5394, Stop: 5744, Start Num: 5

Candidate Starts for Bullzi2019\_6:  
(Start: 5 @5394 has 145 MA's), (8, 5457), (9, 5478), (16, 5559), (22, 5691), (23, 5697),

Gene: Burgy\_6 Start: 5385, Stop: 5738, Start Num: 5

Candidate Starts for Burgy\_6:  
(Start: 5 @5385 has 145 MA's), (8, 5448), (9, 5469), (12, 5490), (16, 5553), (21, 5664), (22, 5685),

Gene: BurtonThePup\_6 Start: 5385, Stop: 5738, Start Num: 5

Candidate Starts for BurtonThePup\_6:  
(Start: 5 @5385 has 145 MA's), (8, 5448), (9, 5469), (12, 5490), (16, 5553), (21, 5664), (22, 5685),

Gene: Cayde6\_6 Start: 5370, Stop: 5723, Start Num: 5

Candidate Starts for Cayde6\_6:  
(Start: 5 @5370 has 145 MA's), (8, 5433), (9, 5454), (12, 5475), (16, 5538), (21, 5649), (22, 5670),

Gene: Cazares\_6 Start: 5361, Stop: 5714, Start Num: 5

Candidate Starts for Cazares\_6:  
(Start: 5 @5361 has 145 MA's), (8, 5424), (9, 5445), (12, 5466), (16, 5529), (22, 5661), (23, 5667),

Gene: Charbie\_6 Start: 5361, Stop: 5714, Start Num: 5

Candidate Starts for Charbie\_6:  
(Start: 5 @5361 has 145 MA's), (8, 5424), (9, 5445), (12, 5466), (15, 5523), (16, 5529), (21, 5640), (22, 5661),

Gene: Chatham\_6 Start: 5373, Stop: 5726, Start Num: 5

Candidate Starts for Chatham\_6:

(Start: 5 @5373 has 145 MA's), (8, 5436), (9, 5457), (12, 5478), (16, 5541), (21, 5652), (22, 5673),

Gene: Cheesecake\_6 Start: 5385, Stop: 5738, Start Num: 5

Candidate Starts for Cheesecake\_6:

(Start: 5 @5385 has 145 MA's), (8, 5448), (9, 5469), (12, 5490), (15, 5547), (16, 5553), (22, 5685), (23, 5691),

Gene: Ciel\_6 Start: 5385, Stop: 5738, Start Num: 5

Candidate Starts for Ciel\_6:

(Start: 5 @5385 has 145 MA's), (8, 5448), (9, 5469), (12, 5490), (21, 5664), (22, 5685),

Gene: Clownery\_6 Start: 5478, Stop: 5831, Start Num: 5

Candidate Starts for Clownery\_6:

(Start: 5 @5478 has 145 MA's), (8, 5541), (9, 5562), (12, 5583), (16, 5646), (22, 5778), (23, 5784),

Gene: Concrete\_6 Start: 5421, Stop: 5774, Start Num: 5

Candidate Starts for Concrete\_6:

(Start: 5 @5421 has 145 MA's), (8, 5484), (9, 5505), (12, 5526), (16, 5589), (21, 5700), (22, 5721),

Gene: DaftyDuck\_6 Start: 5385, Stop: 5738, Start Num: 5

Candidate Starts for DaftyDuck\_6:

(Start: 5 @5385 has 145 MA's), (8, 5448), (9, 5469), (12, 5490), (16, 5553), (21, 5664), (22, 5685),

Gene: Danimal\_6 Start: 5373, Stop: 5726, Start Num: 5

Candidate Starts for Danimal\_6:

(Start: 5 @5373 has 145 MA's), (8, 5436), (9, 5457), (12, 5478), (16, 5541), (21, 5652), (22, 5673),

Gene: Danno\_6 Start: 5385, Stop: 5738, Start Num: 5

Candidate Starts for Danno\_6:

(Start: 5 @5385 has 145 MA's), (8, 5448), (9, 5469), (12, 5490), (16, 5553), (21, 5664), (22, 5685),

Gene: DirtPie\_6 Start: 5478, Stop: 5831, Start Num: 5

Candidate Starts for DirtPie\_6:

(Start: 5 @5478 has 145 MA's), (8, 5541), (9, 5562), (12, 5583), (16, 5646), (21, 5757), (22, 5778),

Gene: Dongwon\_6 Start: 5373, Stop: 5726, Start Num: 5

Candidate Starts for Dongwon\_6:

(Start: 5 @5373 has 145 MA's), (8, 5436), (9, 5457), (12, 5478), (16, 5541), (21, 5652), (22, 5673),

Gene: Dooby\_6 Start: 5373, Stop: 5726, Start Num: 5

Candidate Starts for Dooby\_6:

(Start: 5 @5373 has 145 MA's), (8, 5436), (9, 5457), (12, 5478), (16, 5541), (21, 5652), (22, 5673),

Gene: Duggie\_6 Start: 5367, Stop: 5720, Start Num: 5

Candidate Starts for Duggie\_6:

(Start: 5 @5367 has 145 MA's), (8, 5430), (9, 5451), (12, 5472), (15, 5529), (16, 5535), (22, 5667), (23, 5673),

Gene: Duggle\_6 Start: 5373, Stop: 5726, Start Num: 5

Candidate Starts for Duggle\_6:

(Start: 5 @5373 has 145 MA's), (8, 5436), (9, 5457), (12, 5478), (16, 5541), (21, 5652), (22, 5673),

Gene: ELee24\_6 Start: 5427, Stop: 5780, Start Num: 5

Candidate Starts for ELee24\_6:

(Start: 5 @5427 has 145 MA's), (8, 5490), (9, 5511), (12, 5532), (13, 5544), (16, 5595), (22, 5727),

Gene: EdElric\_6 Start: 5373, Stop: 5726, Start Num: 5

Candidate Starts for EdElric\_6:

(Start: 5 @5373 has 145 MA's), (8, 5436), (9, 5457), (12, 5478), (16, 5541), (21, 5652), (22, 5673),

Gene: Efeko\_7 Start: 5283, Stop: 5633, Start Num: 5

Candidate Starts for Efeko\_7:

(4, 5157), (Start: 5 @5283 has 145 MA's), (8, 5346), (10, 5370), (11, 5373), (12, 5388), (20, 5478), (21, 5559), (22, 5580), (23, 5586), (26, 5619),

Gene: Eightball\_6 Start: 5385, Stop: 5738, Start Num: 5

Candidate Starts for Eightball\_6:

(Start: 5 @5385 has 145 MA's), (8, 5448), (9, 5469), (12, 5490), (16, 5553), (21, 5664), (22, 5685),

Gene: Ekko14\_6 Start: 5361, Stop: 5711, Start Num: 5

Candidate Starts for Ekko14\_6:

(Start: 5 @5361 has 145 MA's), (8, 5424), (9, 5445), (16, 5526), (22, 5658), (23, 5664),

Gene: Elspeth\_6 Start: 5361, Stop: 5711, Start Num: 5

Candidate Starts for Elspeth\_6:

(Start: 5 @5361 has 145 MA's), (8, 5424), (9, 5445), (16, 5526), (22, 5658), (23, 5664),

Gene: Erin\_6 Start: 5373, Stop: 5726, Start Num: 5

Candidate Starts for Erin\_6:

(Start: 5 @5373 has 145 MA's), (8, 5436), (9, 5457), (12, 5478), (16, 5541), (21, 5652), (22, 5673),

Gene: Gabbspett\_6 Start: 5478, Stop: 5831, Start Num: 5

Candidate Starts for Gabbspett\_6:

(Start: 5 @5478 has 145 MA's), (8, 5541), (9, 5562), (12, 5583), (16, 5646), (21, 5757), (22, 5778),

Gene: Gardevoir\_6 Start: 5374, Stop: 5727, Start Num: 5

Candidate Starts for Gardevoir\_6:

(Start: 5 @5374 has 145 MA's), (8, 5437), (9, 5458), (12, 5479), (16, 5542), (21, 5653), (22, 5674),

Gene: Gillker\_6 Start: 5373, Stop: 5726, Start Num: 5

Candidate Starts for Gillker\_6:

(Start: 5 @5373 has 145 MA's), (8, 5436), (9, 5457), (12, 5478), (16, 5541), (21, 5652), (22, 5673),

Gene: Godfather\_6 Start: 5385, Stop: 5738, Start Num: 5

Candidate Starts for Godfather\_6:

(Start: 5 @5385 has 145 MA's), (8, 5448), (9, 5469), (12, 5490), (16, 5553), (21, 5664), (22, 5685),

Gene: GoldenBlanche\_6 Start: 5373, Stop: 5726, Start Num: 5

Candidate Starts for GoldenBlanche\_6:

(Start: 5 @5373 has 145 MA's), (8, 5436), (9, 5457), (12, 5478), (16, 5541), (21, 5652), (22, 5673),

Gene: Goobery\_6 Start: 5385, Stop: 5738, Start Num: 5

Candidate Starts for Goobery\_6:

(Start: 5 @5385 has 145 MA's), (8, 5448), (9, 5469), (12, 5490), (16, 5553), (21, 5664), (22, 5685),

Gene: Goulash\_6 Start: 5373, Stop: 5726, Start Num: 5

Candidate Starts for Goulash\_6:

(Start: 5 @5373 has 145 MA's), (8, 5436), (9, 5457), (12, 5478), (16, 5541), (21, 5652), (22, 5673),

Gene: Grayscar\_6 Start: 5385, Stop: 5738, Start Num: 5

Candidate Starts for Grayscar\_6:

(Start: 5 @5385 has 145 MA's), (8, 5448), (9, 5469), (12, 5490), (15, 5547), (16, 5553), (22, 5685), (23, 5691),

Gene: HarperAnne\_6 Start: 5361, Stop: 5711, Start Num: 5

Candidate Starts for HarperAnne\_6:

(Start: 5 @5361 has 145 MA's), (8, 5424), (9, 5445), (16, 5526), (22, 5658), (23, 5664),

Gene: HeadMave\_6 Start: 5385, Stop: 5738, Start Num: 5

Candidate Starts for HeadMave\_6:

(Start: 5 @5385 has 145 MA's), (8, 5448), (9, 5469), (12, 5490), (16, 5553), (21, 5664), (22, 5685),

Gene: Hernandez44\_6 Start: 5478, Stop: 5831, Start Num: 5

Candidate Starts for Hernandez44\_6:

(Start: 5 @5478 has 145 MA's), (8, 5541), (9, 5562), (12, 5583), (16, 5646), (21, 5757), (22, 5778),

Gene: Horacetta\_6 Start: 5373, Stop: 5726, Start Num: 5

Candidate Starts for Horacetta\_6:

(Start: 5 @5373 has 145 MA's), (8, 5436), (9, 5457), (12, 5478), (16, 5541), (21, 5652), (22, 5673),

Gene: Hulk\_6 Start: 5385, Stop: 5738, Start Num: 5

Candidate Starts for Hulk\_6:

(Start: 5 @5385 has 145 MA's), (8, 5448), (9, 5469), (12, 5490), (16, 5553), (22, 5685),

Gene: IzzyPants24\_6 Start: 5412, Stop: 5762, Start Num: 5

Candidate Starts for IzzyPants24\_6:

(Start: 5 @5412 has 145 MA's), (8, 5475), (9, 5496), (16, 5577), (22, 5709), (23, 5715),

Gene: JRok\_6 Start: 5370, Stop: 5723, Start Num: 5

Candidate Starts for JRok\_6:

(Start: 5 @5370 has 145 MA's), (8, 5433), (9, 5454), (12, 5475), (16, 5538), (22, 5670), (23, 5676),

Gene: Jahseh\_6 Start: 5373, Stop: 5726, Start Num: 5

Candidate Starts for Jahseh\_6:

(Start: 5 @5373 has 145 MA's), (8, 5436), (9, 5457), (12, 5478), (16, 5541), (21, 5652), (22, 5673),

Gene: JaimeB\_6 Start: 5385, Stop: 5738, Start Num: 5

Candidate Starts for JaimeB\_6:

(Start: 5 @5385 has 145 MA's), (8, 5448), (9, 5469), (12, 5490), (16, 5553), (21, 5664), (22, 5685),

Gene: Jannah\_6 Start: 5373, Stop: 5726, Start Num: 5

Candidate Starts for Jannah\_6:

(Start: 5 @5373 has 145 MA's), (8, 5436), (9, 5457), (12, 5478), (16, 5541), (21, 5652), (22, 5673),

Gene: Jella\_6 Start: 5397, Stop: 5750, Start Num: 5

Candidate Starts for Jella\_6:

(Start: 5 @5397 has 145 MA's), (8, 5460), (9, 5481), (12, 5502), (16, 5565), (22, 5697),

Gene: Jerky\_6 Start: 5457, Stop: 5810, Start Num: 5

Candidate Starts for Jerky\_6:

(Start: 5 @5457 has 145 MA's), (8, 5520), (9, 5541), (12, 5562), (16, 5625), (20, 5655), (21, 5736), (22, 5757),

Gene: JoBros\_6 Start: 5374, Stop: 5727, Start Num: 5

Candidate Starts for JoBros\_6:

(Start: 5 @5374 has 145 MA's), (8, 5437), (9, 5458), (12, 5479), (16, 5542), (21, 5653), (22, 5674),

Gene: JooneeDee\_6 Start: 5403, Stop: 5753, Start Num: 5

Candidate Starts for JooneeDee\_6:

(Start: 5 @5403 has 145 MA's), (8, 5466), (9, 5487), (12, 5508), (16, 5568), (22, 5700), (23, 5706),

Gene: Josuke\_6 Start: 5385, Stop: 5738, Start Num: 5

Candidate Starts for Josuke\_6:

(Start: 5 @5385 has 145 MA's), (8, 5448), (9, 5469), (12, 5490), (15, 5547), (16, 5553), (22, 5685), (23, 5691),

Gene: Kaijohn\_6 Start: 5379, Stop: 5729, Start Num: 5

Candidate Starts for Kaijohn\_6:

(Start: 5 @5379 has 145 MA's), (8, 5442), (9, 5463), (16, 5544), (22, 5676), (23, 5682),

Gene: KayPaulus\_6 Start: 5367, Stop: 5720, Start Num: 5

Candidate Starts for KayPaulus\_6:

(Start: 5 @5367 has 145 MA's), (8, 5430), (9, 5451), (12, 5472), (15, 5529), (16, 5535), (22, 5667), (23, 5673),

Gene: Kevanna\_6 Start: 5367, Stop: 5720, Start Num: 5

Candidate Starts for Kevanna\_6:

(Start: 5 @5367 has 145 MA's), (8, 5430), (9, 5451), (12, 5472), (15, 5529), (16, 5535), (22, 5667), (23, 5673),

Gene: KillerTomato\_6 Start: 5421, Stop: 5774, Start Num: 5

Candidate Starts for KillerTomato\_6:

(Start: 5 @5421 has 145 MA's), (8, 5484), (9, 5505), (12, 5526), (16, 5589), (22, 5721), (23, 5727),

Gene: Kojax4\_6 Start: 5385, Stop: 5738, Start Num: 5

Candidate Starts for Kojax4\_6:

(Start: 5 @5385 has 145 MA's), (8, 5448), (9, 5469), (12, 5490), (16, 5553), (21, 5664), (22, 5685),

Gene: KyriosFaba\_6 Start: 5373, Stop: 5726, Start Num: 5

Candidate Starts for KyriosFaba\_6:

(Start: 5 @5373 has 145 MA's), (8, 5436), (9, 5457), (12, 5478), (16, 5541), (21, 5652), (22, 5673),

Gene: LaviMo\_6 Start: 5385, Stop: 5738, Start Num: 5

Candidate Starts for LaviMo\_6:

(Start: 5 @5385 has 145 MA's), (8, 5448), (9, 5469), (12, 5490), (15, 5547), (16, 5553), (22, 5685), (23, 5691),

Gene: Leafy\_6 Start: 5391, Stop: 5744, Start Num: 5

Candidate Starts for Leafy\_6:

(Start: 5 @5391 has 145 MA's), (8, 5454), (9, 5475), (12, 5496), (16, 5559), (22, 5691), (23, 5697),

Gene: LemonPepper\_6 Start: 5373, Stop: 5726, Start Num: 5

Candidate Starts for LemonPepper\_6:

(Start: 5 @5373 has 145 MA's), (8, 5436), (9, 5457), (12, 5478), (16, 5541), (21, 5652), (22, 5673),

Gene: LionelHutz\_6 Start: 5385, Stop: 5738, Start Num: 5

Candidate Starts for LionelHutz\_6:

(Start: 5 @5385 has 145 MA's), (8, 5448), (9, 5469), (12, 5490), (16, 5553), (21, 5664), (22, 5685),

Gene: Livingwater\_6 Start: 5367, Stop: 5720, Start Num: 5

Candidate Starts for Livingwater\_6:

(Start: 5 @5367 has 145 MA's), (8, 5430), (9, 5451), (12, 5472), (15, 5529), (16, 5535), (22, 5667), (23, 5673),

Gene: Loca\_6 Start: 5394, Stop: 5747, Start Num: 5

Candidate Starts for Loca\_6:

(Start: 5 @5394 has 145 MA's), (8, 5457), (9, 5478), (12, 5499), (16, 5562), (21, 5673), (22, 5694),

Gene: Lola20\_6 Start: 5370, Stop: 5723, Start Num: 5

Candidate Starts for Lola20\_6:

(Start: 5 @5370 has 145 MA's), (8, 5433), (9, 5454), (12, 5475), (16, 5538), (21, 5649), (22, 5670),

Gene: Lunatic\_6 Start: 5361, Stop: 5714, Start Num: 5

Candidate Starts for Lunatic\_6:

(Start: 5 @5361 has 145 MA's), (8, 5424), (9, 5445), (12, 5466), (16, 5529), (22, 5661), (23, 5667),

Gene: Luxx\_6 Start: 5397, Stop: 5750, Start Num: 5

Candidate Starts for Luxx\_6:

(Start: 5 @5397 has 145 MA's), (8, 5460), (9, 5481), (12, 5502), (16, 5565), (22, 5697),

Gene: Madebyisha\_6 Start: 5457, Stop: 5810, Start Num: 5

Candidate Starts for Madebyisha\_6:

(Start: 5 @5457 has 145 MA's), (8, 5520), (9, 5541), (12, 5562), (16, 5625), (20, 5655), (21, 5736), (22, 5757),

Gene: Majesty\_6 Start: 5385, Stop: 5738, Start Num: 5

Candidate Starts for Majesty\_6:

(Start: 5 @5385 has 145 MA's), (8, 5448), (9, 5469), (12, 5490), (16, 5553), (21, 5664), (22, 5685),

Gene: ManAs\_6 Start: 5373, Stop: 5726, Start Num: 5

Candidate Starts for ManAs\_6:

(Start: 5 @5373 has 145 MA's), (8, 5436), (9, 5457), (12, 5478), (16, 5541), (21, 5652), (22, 5673),

Gene: Maneater\_6 Start: 5361, Stop: 5714, Start Num: 5

Candidate Starts for Maneater\_6:

(Start: 5 @5361 has 145 MA's), (8, 5424), (9, 5445), (12, 5466), (15, 5523), (16, 5529), (21, 5640), (22, 5661),

Gene: Marichuy\_6 Start: 5478, Stop: 5831, Start Num: 5

Candidate Starts for Marichuy\_6:

(Start: 5 @5478 has 145 MA's), (8, 5541), (9, 5562), (12, 5583), (16, 5646), (21, 5757), (22, 5778),

Gene: MasterPitts\_6 Start: 5385, Stop: 5738, Start Num: 5  
Candidate Starts for MasterPitts\_6:  
(Start: 5 @5385 has 145 MA's), (8, 5448), (9, 5469), (12, 5490), (16, 5553), (21, 5664), (22, 5685),

Gene: Mauilvory\_6 Start: 5478, Stop: 5828, Start Num: 5  
Candidate Starts for Mauilvory\_6:  
(Start: 5 @5478 has 145 MA's), (8, 5541), (9, 5562), (16, 5643), (22, 5775), (23, 5781),

Gene: McShie\_6 Start: 5373, Stop: 5726, Start Num: 5  
Candidate Starts for McShie\_6:  
(Start: 5 @5373 has 145 MA's), (8, 5436), (9, 5457), (12, 5478), (16, 5541), (22, 5673), (23, 5679),

Gene: MelBee03\_6 Start: 5367, Stop: 5720, Start Num: 5  
Candidate Starts for MelBee03\_6:  
(Start: 5 @5367 has 145 MA's), (8, 5430), (9, 5451), (12, 5472), (15, 5529), (16, 5535), (22, 5667), (23, 5673),

Gene: Miaurora\_6 Start: 5478, Stop: 5831, Start Num: 5  
Candidate Starts for Miaurora\_6:  
(Start: 5 @5478 has 145 MA's), (8, 5541), (9, 5562), (12, 5583), (16, 5646), (22, 5778), (23, 5784),

Gene: Minima\_6 Start: 5373, Stop: 5726, Start Num: 5  
Candidate Starts for Minima\_6:  
(Start: 5 @5373 has 145 MA's), (8, 5436), (9, 5457), (12, 5478), (16, 5541), (21, 5652), (22, 5673),

Gene: MirimarMandM\_6 Start: 5445, Stop: 5795, Start Num: 5  
Candidate Starts for MirimarMandM\_6:  
(Start: 5 @5445 has 145 MA's), (8, 5508), (9, 5529), (12, 5550), (16, 5610), (22, 5742), (23, 5748),

Gene: MrGreen\_6 Start: 5388, Stop: 5741, Start Num: 5  
Candidate Starts for MrGreen\_6:  
(Start: 5 @5388 has 145 MA's), (8, 5451), (9, 5472), (12, 5493), (15, 5550), (16, 5556), (22, 5688), (23, 5694),

Gene: Myram\_6 Start: 5373, Stop: 5726, Start Num: 5  
Candidate Starts for Myram\_6:  
(Start: 5 @5373 has 145 MA's), (8, 5436), (9, 5457), (12, 5478), (16, 5541), (21, 5652), (22, 5673),

Gene: Naby\_6 Start: 5108, Stop: 5458, Start Num: 5  
Candidate Starts for Naby\_6:  
(Start: 5 @5108 has 145 MA's), (8, 5168), (9, 5189), (12, 5210), (14, 5243), (16, 5273), (22, 5405), (23, 5411), (24, 5420),

Gene: Namsahir\_6 Start: 5436, Stop: 5786, Start Num: 5  
Candidate Starts for Namsahir\_6:  
(Start: 5 @5436 has 145 MA's), (8, 5499), (9, 5520), (16, 5601), (22, 5733), (23, 5739),

Gene: NeumannU\_6 Start: 5385, Stop: 5738, Start Num: 5  
Candidate Starts for NeumannU\_6:  
(Start: 5 @5385 has 145 MA's), (8, 5448), (9, 5469), (12, 5490), (16, 5553), (21, 5664), (22, 5685),

Gene: Niffler\_6 Start: 5451, Stop: 5804, Start Num: 5  
Candidate Starts for Niffler\_6:

(Start: 5 @5451 has 145 MA's), (8, 5514), (9, 5535), (12, 5556), (16, 5619), (22, 5751), (23, 5757),

Gene: Nobel\_6 Start: 5478, Stop: 5831, Start Num: 5

Candidate Starts for Nobel\_6:

(Start: 5 @5478 has 145 MA's), (8, 5541), (9, 5562), (12, 5583), (16, 5646), (22, 5778), (23, 5784),

Gene: Noelani\_6 Start: 5361, Stop: 5711, Start Num: 5

Candidate Starts for Noelani\_6:

(Start: 5 @5361 has 145 MA's), (8, 5424), (9, 5445), (16, 5526), (22, 5658), (23, 5664),

Gene: Oaklynn\_6 Start: 5373, Stop: 5726, Start Num: 5

Candidate Starts for Oaklynn\_6:

(Start: 5 @5373 has 145 MA's), (8, 5436), (9, 5457), (12, 5478), (16, 5541), (22, 5673), (23, 5679),

Gene: Octopus\_6 Start: 5373, Stop: 5726, Start Num: 5

Candidate Starts for Octopus\_6:

(Start: 5 @5373 has 145 MA's), (8, 5436), (9, 5457), (12, 5478), (16, 5541), (21, 5652), (22, 5673),

Gene: OdetoJoy\_6 Start: 5457, Stop: 5810, Start Num: 5

Candidate Starts for OdetoJoy\_6:

(Start: 5 @5457 has 145 MA's), (8, 5520), (9, 5541), (12, 5562), (16, 5625), (20, 5655), (21, 5736), (22, 5757),

Gene: Otwor\_6 Start: 5385, Stop: 5738, Start Num: 5

Candidate Starts for Otwor\_6:

(Start: 5 @5385 has 145 MA's), (8, 5448), (9, 5469), (12, 5490), (15, 5547), (16, 5553), (22, 5685), (23, 5691),

Gene: Owens\_6 Start: 5385, Stop: 5738, Start Num: 5

Candidate Starts for Owens\_6:

(Start: 5 @5385 has 145 MA's), (8, 5448), (9, 5469), (12, 5490), (16, 5553), (21, 5664), (22, 5685),

Gene: PaoPu\_6 Start: 5373, Stop: 5726, Start Num: 5

Candidate Starts for PaoPu\_6:

(Start: 5 @5373 has 145 MA's), (8, 5436), (9, 5457), (12, 5478), (16, 5541), (21, 5652), (22, 5673),

Gene: Picconator\_6 Start: 5385, Stop: 5738, Start Num: 5

Candidate Starts for Picconator\_6:

(Start: 5 @5385 has 145 MA's), (8, 5448), (9, 5469), (12, 5490), (16, 5553), (21, 5664), (22, 5685),

Gene: Picnic\_6 Start: 5373, Stop: 5726, Start Num: 5

Candidate Starts for Picnic\_6:

(Start: 5 @5373 has 145 MA's), (8, 5436), (9, 5457), (12, 5478), (16, 5541), (21, 5652), (22, 5673),

Gene: PoRanda\_6 Start: 5445, Stop: 5795, Start Num: 5

Candidate Starts for PoRanda\_6:

(Start: 5 @5445 has 145 MA's), (8, 5508), (9, 5529), (12, 5550), (16, 5610), (22, 5742), (23, 5748),

Gene: Pondwater\_6 Start: 5373, Stop: 5726, Start Num: 5

Candidate Starts for Pondwater\_6:

(Start: 5 @5373 has 145 MA's), (8, 5436), (9, 5457), (12, 5478), (16, 5541), (21, 5652), (22, 5673),

Gene: Publix\_6 Start: 5436, Stop: 5786, Start Num: 5

Candidate Starts for Publix\_6:

(Start: 5 @5436 has 145 MA's), (8, 5499), (9, 5520), (16, 5601), (22, 5733), (23, 5739),

Gene: Puddles3\_6 Start: 5373, Stop: 5726, Start Num: 5

Candidate Starts for Puddles3\_6:

(Start: 5 @5373 has 145 MA's), (8, 5436), (9, 5457), (12, 5478), (16, 5541), (21, 5652), (22, 5673),

Gene: PuffyCat\_6 Start: 5403, Stop: 5756, Start Num: 5

Candidate Starts for PuffyCat\_6:

(Start: 5 @5403 has 145 MA's), (8, 5466), (9, 5487), (12, 5508), (16, 5571), (22, 5703), (23, 5709),

Gene: Quaker\_6 Start: 5367, Stop: 5720, Start Num: 5

Candidate Starts for Quaker\_6:

(Start: 5 @5367 has 145 MA's), (8, 5430), (9, 5451), (12, 5472), (15, 5529), (16, 5535), (22, 5667), (23, 5673),

Gene: Rhogar\_6 Start: 5385, Stop: 5738, Start Num: 5

Candidate Starts for Rhogar\_6:

(Start: 5 @5385 has 145 MA's), (8, 5448), (9, 5469), (12, 5490), (16, 5553), (21, 5664), (22, 5685),

Gene: Rhysand\_6 Start: 5385, Stop: 5738, Start Num: 5

Candidate Starts for Rhysand\_6:

(Start: 5 @5385 has 145 MA's), (8, 5448), (9, 5469), (12, 5490), (15, 5547), (16, 5553), (22, 5685), (23, 5691),

Gene: Rira\_6 Start: 5412, Stop: 5762, Start Num: 5

Candidate Starts for Rira\_6:

(Start: 5 @5412 has 145 MA's), (8, 5475), (9, 5496), (16, 5577), (22, 5709), (23, 5715),

Gene: RoscoWindex\_6 Start: 5385, Stop: 5738, Start Num: 5

Candidate Starts for RoscoWindex\_6:

(Start: 5 @5385 has 145 MA's), (8, 5448), (9, 5469), (12, 5490), (15, 5547), (16, 5553), (22, 5685), (23, 5691),

Gene: Sachet\_6 Start: 5373, Stop: 5726, Start Num: 5

Candidate Starts for Sachet\_6:

(Start: 5 @5373 has 145 MA's), (8, 5436), (9, 5457), (12, 5478), (16, 5541), (21, 5652), (22, 5673),

Gene: Sage7\_6 Start: 5385, Stop: 5738, Start Num: 5

Candidate Starts for Sage7\_6:

(Start: 5 @5385 has 145 MA's), (8, 5448), (9, 5469), (12, 5490), (15, 5547), (16, 5553), (22, 5685), (23, 5691),

Gene: SantasSleigh\_6 Start: 5409, Stop: 5762, Start Num: 5

Candidate Starts for SantasSleigh\_6:

(Start: 5 @5409 has 145 MA's), (8, 5472), (9, 5493), (12, 5514), (15, 5571), (16, 5577), (22, 5709), (23, 5715),

Gene: Sara\_6 Start: 5373, Stop: 5726, Start Num: 5

Candidate Starts for Sara\_6:

(Start: 5 @5373 has 145 MA's), (8, 5436), (9, 5457), (12, 5478), (16, 5541), (21, 5652), (22, 5673),

Gene: Scamander\_6 Start: 5385, Stop: 5738, Start Num: 5

Candidate Starts for Scamander\_6:

(Start: 5 @5385 has 145 MA's), (8, 5448), (9, 5469), (12, 5490), (16, 5553), (21, 5664), (22, 5685),

Gene: Scrunchy\_6 Start: 5385, Stop: 5738, Start Num: 5

Candidate Starts for Scrunchy\_6:

(Start: 5 @5385 has 145 MA's), (8, 5448), (9, 5469), (12, 5490), (16, 5553), (21, 5664), (22, 5685),

Gene: SeaWolves\_6 Start: 5373, Stop: 5726, Start Num: 5

Candidate Starts for SeaWolves\_6:

(Start: 5 @5373 has 145 MA's), (8, 5436), (9, 5457), (12, 5478), (16, 5541), (21, 5652), (22, 5673),

Gene: Sippinontea\_6 Start: 5367, Stop: 5720, Start Num: 5

Candidate Starts for Sippinontea\_6:

(Start: 5 @5367 has 145 MA's), (8, 5430), (9, 5451), (12, 5472), (15, 5529), (16, 5535), (22, 5667), (23, 5673),

Gene: Slentz\_6 Start: 5385, Stop: 5738, Start Num: 5

Candidate Starts for Slentz\_6:

(Start: 5 @5385 has 145 MA's), (8, 5448), (9, 5469), (12, 5490), (16, 5553), (21, 5664), (22, 5685),

Gene: Slizam\_6 Start: 5412, Stop: 5762, Start Num: 5

Candidate Starts for Slizam\_6:

(Start: 5 @5412 has 145 MA's), (8, 5475), (9, 5496), (16, 5577), (22, 5709), (23, 5715),

Gene: Snuffles\_7 Start: 5582, Stop: 5932, Start Num: 5

Candidate Starts for Snuffles\_7:

(Start: 5 @5582 has 145 MA's), (8, 5645), (9, 5666), (16, 5747), (22, 5879), (23, 5885),

Gene: Stem\_6 Start: 5412, Stop: 5762, Start Num: 5

Candidate Starts for Stem\_6:

(Start: 5 @5412 has 145 MA's), (8, 5475), (9, 5496), (16, 5577), (22, 5709), (23, 5715),

Gene: TeddyBoy\_6 Start: 5385, Stop: 5738, Start Num: 5

Candidate Starts for TeddyBoy\_6:

(Start: 5 @5385 has 145 MA's), (8, 5448), (9, 5469), (12, 5490), (16, 5553), (21, 5664), (22, 5685),

Gene: TimoTea\_6 Start: 5361, Stop: 5714, Start Num: 5

Candidate Starts for TimoTea\_6:

(Start: 5 @5361 has 145 MA's), (8, 5424), (9, 5445), (12, 5466), (15, 5523), (16, 5529), (21, 5640), (22, 5661),

Gene: TinyTruffula\_6 Start: 5478, Stop: 5831, Start Num: 5

Candidate Starts for TinyTruffula\_6:

(Start: 5 @5478 has 145 MA's), (8, 5541), (9, 5562), (12, 5583), (16, 5646), (22, 5778), (23, 5784),

Gene: TlaliMex\_6 Start: 5472, Stop: 5825, Start Num: 5

Candidate Starts for TlaliMex\_6:

(Start: 5 @5472 has 145 MA's), (8, 5535), (9, 5556), (12, 5577), (16, 5640), (22, 5772), (23, 5778),

Gene: TomBrady12\_6 Start: 5412, Stop: 5762, Start Num: 5

Candidate Starts for TomBrady12\_6:

(Start: 5 @5412 has 145 MA's), (8, 5475), (9, 5496), (16, 5577), (22, 5709), (23, 5715),

Gene: Trackstar\_6 Start: 5478, Stop: 5831, Start Num: 5

Candidate Starts for Trackstar\_6:

(Start: 5 @5478 has 145 MA's), (8, 5541), (9, 5562), (12, 5583), (16, 5646), (22, 5778), (23, 5784),

Gene: Trireme\_6 Start: 5478, Stop: 5831, Start Num: 5

Candidate Starts for Trireme\_6:

(Start: 5 @5478 has 145 MA's), (8, 5541), (9, 5562), (12, 5583), (16, 5646), (22, 5778), (23, 5784),

Gene: Tyrellus\_6 Start: 5385, Stop: 5738, Start Num: 5

Candidate Starts for Tyrellus\_6:

(Start: 5 @5385 has 145 MA's), (8, 5448), (9, 5469), (12, 5490), (16, 5553), (21, 5664), (22, 5685),

Gene: Upsilon\_6 Start: 5445, Stop: 5795, Start Num: 5

Candidate Starts for Upsilon\_6:

(Start: 5 @5445 has 145 MA's), (8, 5508), (9, 5529), (12, 5550), (16, 5610), (22, 5742), (23, 5748),

Gene: Vanisius\_6 Start: 5385, Stop: 5738, Start Num: 5

Candidate Starts for Vanisius\_6:

(Start: 5 @5385 has 145 MA's), (8, 5448), (9, 5469), (12, 5490), (15, 5547), (16, 5553), (22, 5685), (23, 5691),

Gene: VitulaEligans\_6 Start: 5457, Stop: 5810, Start Num: 5

Candidate Starts for VitulaEligans\_6:

(Start: 5 @5457 has 145 MA's), (8, 5520), (9, 5541), (12, 5562), (16, 5625), (20, 5655), (21, 5736), (22, 5757),

Gene: Witch\_6 Start: 5374, Stop: 5727, Start Num: 5

Candidate Starts for Witch\_6:

(Start: 5 @5374 has 145 MA's), (8, 5437), (9, 5458), (12, 5479), (16, 5542), (21, 5653), (22, 5674),

Gene: Wolfpack\_6 Start: 5367, Stop: 5720, Start Num: 5

Candidate Starts for Wolfpack\_6:

(Start: 5 @5367 has 145 MA's), (8, 5430), (9, 5451), (12, 5472), (15, 5529), (16, 5535), (22, 5667), (23, 5673),

Gene: Yami\_6 Start: 5361, Stop: 5714, Start Num: 5

Candidate Starts for Yami\_6:

(Start: 5 @5361 has 145 MA's), (8, 5424), (9, 5445), (12, 5466), (16, 5529), (22, 5661), (23, 5667),

Gene: Yasuo\_6 Start: 5370, Stop: 5723, Start Num: 5

Candidate Starts for Yasuo\_6:

(Start: 5 @5370 has 145 MA's), (8, 5433), (9, 5454), (12, 5475), (16, 5538), (21, 5649), (22, 5670),

Gene: YertPhresh\_6 Start: 5373, Stop: 5726, Start Num: 5

Candidate Starts for YertPhresh\_6:

(Start: 5 @5373 has 145 MA's), (8, 5436), (9, 5457), (12, 5478), (16, 5541), (21, 5652), (22, 5673),

Gene: Yubaba\_6 Start: 5374, Stop: 5727, Start Num: 5

Candidate Starts for Yubaba\_6:

(Start: 5 @5374 has 145 MA's), (8, 5437), (9, 5458), (12, 5479), (16, 5542), (21, 5653), (22, 5674),

Gene: Zahlia\_6 Start: 5478, Stop: 5831, Start Num: 5

Candidate Starts for Zahlia\_6:

(Start: 5 @5478 has 145 MA's), (8, 5541), (9, 5562), (12, 5583), (15, 5640), (16, 5646), (22, 5778), (23, 5784),