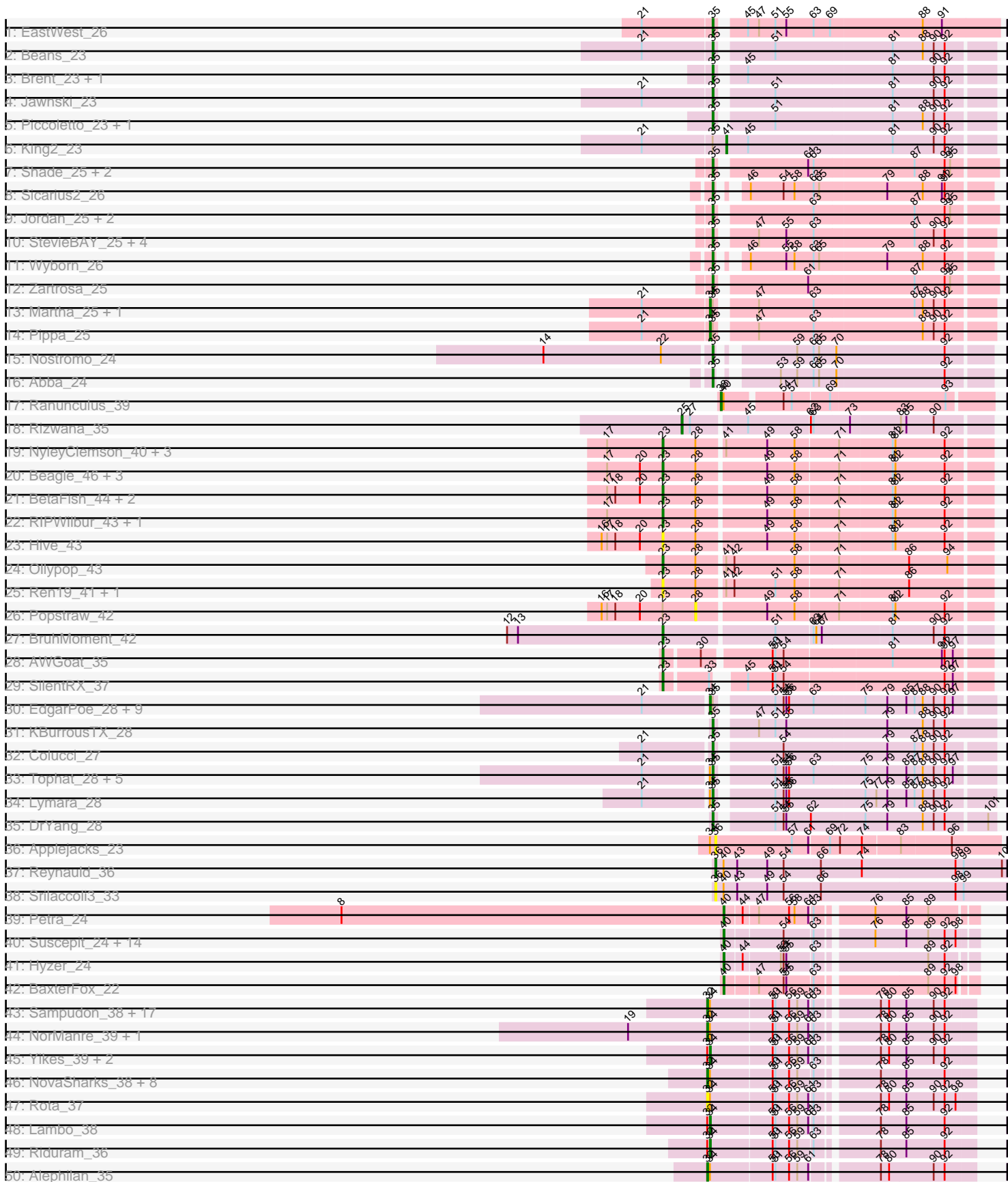
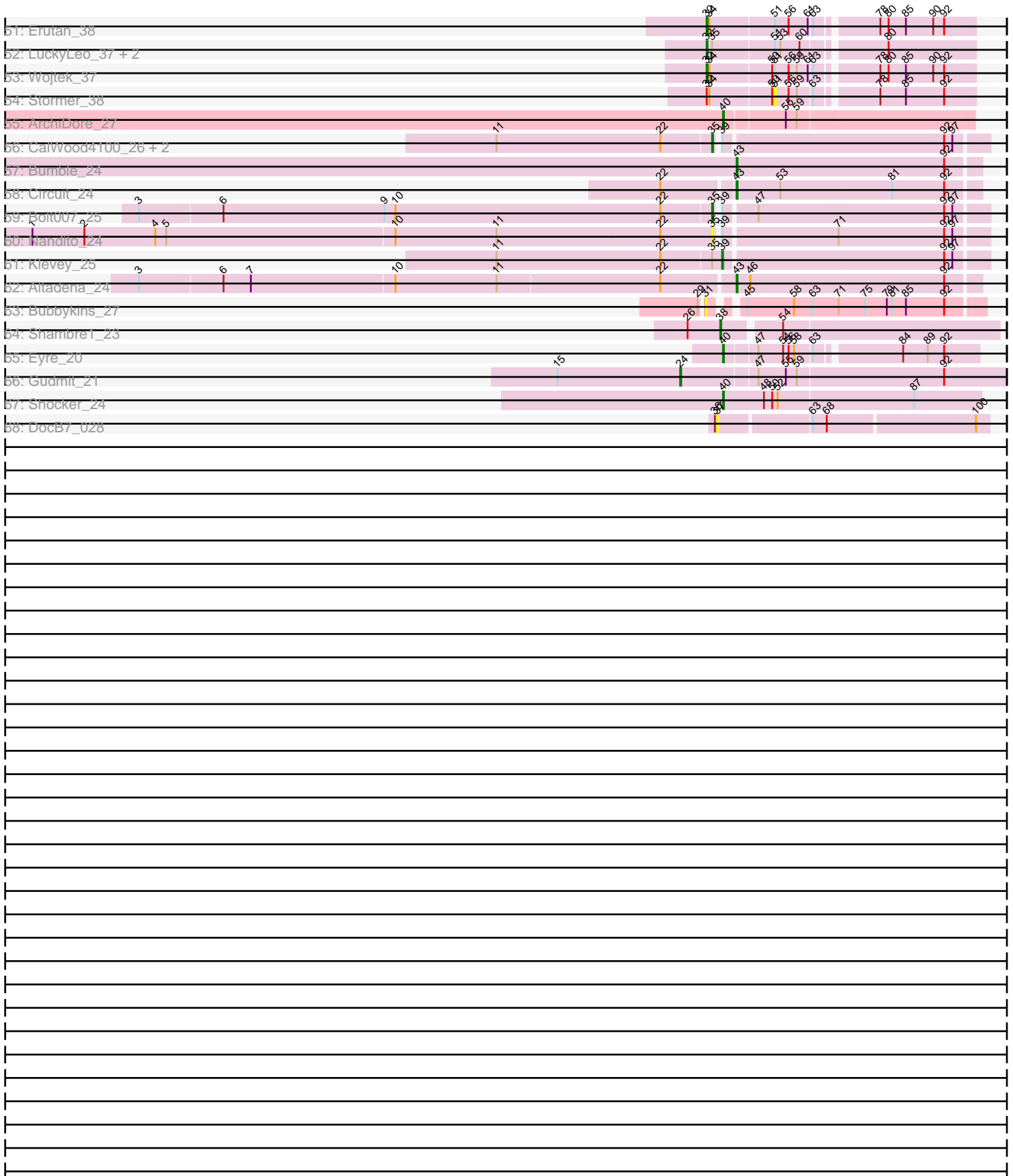


Pham 308207





Note: Tracks are now grouped by subcluster and scaled. Switching in subcluster is indicated by changes in track color. Track scale is now set by default to display the region 30 bp upstream of start 1 to 30 bp downstream of the last possible start. If this default region is judged to be packed too tightly with annotated starts, the track will be further scaled to only show that region of the ORF with annotated starts. This action will be indicated by adding "Zoomed" to the title. For starts, yellow indicates the location of called starts comprised solely of Glimmer/GeneMark auto-annotations, green indicates the location of called starts with at least 1 manual gene annotation.

Pham 308207 Report

This analysis was run 06/27/26 on database version 652.

Pham number 308207 has 149 members, 18 are drafts.

Phages represented in each track:

- Track 1 : EastWest_26
- Track 2 : Beans_23
- Track 3 : Brent_23, Franzy_23
- Track 4 : Jawnski_23
- Track 5 : Piccoletto_23, NathanVaag_23
- Track 6 : King2_23
- Track 7 : Shade_25, TaeYoung_25, Grekaycon_25
- Track 8 : Sicarius2_26
- Track 9 : Jordan_25, Sonny_25, JKerns_25
- Track 10 : StevieBAY_25, BarretLemon_25, GravityBall_25, Timinator_25, LeeroyJ_25
- Track 11 : Wyborn_26
- Track 12 : Zartrosa_25
- Track 13 : Martha_25, BossLady_25
- Track 14 : Pippa_25
- Track 15 : Nostromo_24
- Track 16 : Abba_24
- Track 17 : Ranunculus_39
- Track 18 : Rizwana_35
- Track 19 : NyleyClemson_40, RazzB_41, MellowYellow_42, Forrestell_42
- Track 20 : Beagle_46, Pureglobe5_46, Kubulix_46, Pointis_44
- Track 21 : BetaFish_44, DogYard_45, Odyssey395_47
- Track 22 : RIPWilbur_43, PhuzzTulsa_42
- Track 23 : Hive_43
- Track 24 : Ollypop_43
- Track 25 : Ren19_41, Nikan_43
- Track 26 : Popstraw_42
- Track 27 : BruhMoment_42
- Track 28 : AWGoat_35
- Track 29 : SilentRX_37
- Track 30 : EdgarPoe_28, RosiePosie_28, Kabreeze_28, Conboy_28, Chipper1996_280, HumptyDumpty_28, Chocolat_28, Scavito_28, PrincessTrina_28, Chubster_28
- Track 31 : KBurrousTX_28
- Track 32 : Colucci_27
- Track 33 : Tophat_28, JaNo_28, Mordred_28, Linus_28, JayCookie_28, MoyaNatalis_28

- Track 34 : Lymara_28
- Track 35 : DrYang_28
- Track 36 : Applejacks_23
- Track 37 : Reynauld_36
- Track 38 : Srilaccoli3_33
- Track 39 : Petra_24
- Track 40 : Suscepit_24, Zameen_24, BoyNamedSue_23, Maridalia_23, AlumE_23, Neobush_24, Antonio_24, PantheRoc_23, Eudoria_24, Trumpet_24, Tayonia_24, Agueybana_23, Yeezy_24, Manasvini_24, Kita_24
- Track 41 : Hyzer_24
- Track 42 : BaxterFox_22
- Track 43 : Sampudon_38, ParvusTarda_38, Sadboi_39, MoiGyank_40, Fulcrum_39, Gibbin_39, Lila22_37, BirthdayBoy_39, GOATification_39, Mima20_36, Rukungu_38, GretelLyn_38, Jalebi_37, LavAbarElk_36, DoobyDoo_37, Zany_37, OtterstedtS21_38, Pywacket_37
- Track 44 : NorManre_39, Patos_39
- Track 45 : Yikes_39, DaviePasture_38, Ranch_38
- Track 46 : NovaSharks_38, Astralis_36, Avian_36, Rumi_38, Charminar_36, Alyssamiracle_39, Jamemuya19_36, RazorC_37, Genamy16_39
- Track 47 : Rota_37
- Track 48 : Lambo_38
- Track 49 : Riduram_36
- Track 50 : Alephilan_35
- Track 51 : Erutan_38
- Track 52 : LuckyLeo_37, Apeppi_35, Tillicus_37
- Track 53 : Wojtek_37
- Track 54 : Stormer_38
- Track 55 : ArchiDore_27
- Track 56 : CalWood4100_26, Lilmac1015_26, Prairie_24
- Track 57 : Bumble_24
- Track 58 : Circuit_24
- Track 59 : Bolt007_25
- Track 60 : Nandito_24
- Track 61 : Klevey_25
- Track 62 : Altadena_24
- Track 63 : Bubbykins_27
- Track 64 : Shambre1_23
- Track 65 : Eyre_20
- Track 66 : Gudmit_21
- Track 67 : Shocker_24
- Track 68 : DocB7_028

Summary of Final Annotations (See graph section above for start numbers):

The start number called the most often in the published annotations is 35, it was called in 35 of the 131 non-draft genes in the pham.

Genes that call this "Most Annotated" start:

- Abba_24, BarretLemon_25, Beans_23, Bolt007_25, Brent_23, CalWood4100_26, Colucci_27, DrYang_28, EastWest_26, Franzy_23, GravityBall_25, Grekaycon_25,

JKerns_25, JaNo_28, Jawnski_23, JayCookie_28, Jordan_25, KBurroustX_28, LeeroyJ_25, Lilmac1015_26, Linus_28, Lymara_28, Mordred_28, MoyaNatalis_28, Nandito_24, NathanVaag_23, Nostromo_24, Piccoletto_23, Prairie_24, Shade_25, Sicarius2_26, Sonny_25, StevieBAY_25, TaeYoung_25, Timinator_25, Tophat_28, Wyborn_26, Zartrosa_25,

Genes that have the "Most Annotated" start but do not call it:

- Apeppi_35, BossLady_25, Chipper1996_280, Chocolat_28, Chubster_28, Conboy_28, EdgarPoe_28, HumptyDumpty_28, Kabreeze_28, King2_23, Klevey_25, LuckyLeo_37, Martha_25, Pippa_25, PrincessTrina_28, RosiePosie_28, Scavito_28, Tillicus_37,

Genes that do not have the "Most Annotated" start:

- AWGoat_35, Agueybana_23, Alephilan_35, Altadena_24, AlumE_23, Alyssamiracle_39, Antonio_24, Applejacks_23, ArchiDore_27, Astralis_36, Avian_36, BaxterFox_22, Beagle_46, BetaFish_44, BirthdayBoy_39, BoyNamedSue_23, BruhMoment_42, Bubbykins_27, Bumble_24, Charminar_36, Circuit_24, DaviePasture_38, DocB7_028, DogYard_45, DoobyDoo_37, Erutan_38, Eudoria_24, Eyre_20, Forrestell_42, Fulcrum_39, GOATification_39, Genamy16_39, Gibbin_39, Gretellyn_38, Gudmit_21, Hive_43, Hyzer_24, Jalebi_37, Jamemuya19_36, Kita_24, Kubulix_46, Lambo_38, LavAbarElk_36, Lila22_37, Manasvini_24, Maridalia_23, MellowYellow_42, Mima20_36, MoiGyank_40, Neobush_24, Nikan_43, NorManre_39, NovaSharks_38, NyleyClemson_40, Odyssey395_47, Ollypop_43, OtterstedtS21_38, PantheRoc_23, ParvusTarda_38, Patos_39, Petra_24, PhuzzTulsa_42, Pointis_44, Popstraw_42, Pureglobe5_46, Pywacket_37, RIPWilbur_43, Ranch_38, Ranunculus_39, RazorC_37, RazzB_41, Ren19_41, Reynauld_36, Riduram_36, Rizwana_35, Rota_37, Rukungu_38, Rumi_38, Sadboi_39, Sampudon_38, Shambre1_23, Shocker_24, SilentRX_37, Srilaccoli3_33, Stormer_38, Suscepit_24, Tayonia_24, Trumpet_24, Wojtek_37, Yeezy_24, Yikes_39, Zameen_24, Zany_37,

Summary by start number:

Start 23:

- Found in 21 of 149 (14.1%) of genes in pham
- Manual Annotations of this start: 15 of 131
- Called 95.2% of time when present
- Phage (with cluster) where this start called: AWGoat_35 (AP4), Beagle_46 (AP2), BetaFish_44 (AP2), BruhMoment_42 (AP3), DogYard_45 (AP2), Forrestell_42 (AP2), Hive_43 (AP2), Kubulix_46 (AP2), MellowYellow_42 (AP2), Nikan_43 (AP2), NyleyClemson_40 (AP2), Odyssey395_47 (AP2), Ollypop_43 (AP2), PhuzzTulsa_42 (AP2), Pointis_44 (AP2), Pureglobe5_46 (AP2), RIPWilbur_43 (AP2), RazzB_41 (AP2), Ren19_41 (AP2), SilentRX_37 (AP4),

Start 24:

- Found in 1 of 149 (0.7%) of genes in pham
- Manual Annotations of this start: 1 of 131
- Called 100.0% of time when present
- Phage (with cluster) where this start called: Gudmit_21 (singleton),

Start 25:

- Found in 1 of 149 (0.7%) of genes in pham
- Manual Annotations of this start: 1 of 131

- Called 100.0% of time when present
- Phage (with cluster) where this start called: Rizwana_35 (AP1),

Start 28:

- Found in 18 of 149 (12.1%) of genes in pham
- No Manual Annotations of this start.
- Called 5.6% of time when present
- Phage (with cluster) where this start called: Popstraw_42 (AP2),

Start 31:

- Found in 1 of 149 (0.7%) of genes in pham
- No Manual Annotations of this start.
- Called 100.0% of time when present
- Phage (with cluster) where this start called: Bubbykins_27 (UNK),

Start 32:

- Found in 42 of 149 (28.2%) of genes in pham
- Manual Annotations of this start: 32 of 131
- Called 85.7% of time when present
- Phage (with cluster) where this start called: Alephilan_35 (DV), Alyssamiracle_39 (DV), Apeppi_35 (DV), Astralis_36 (DV), Avian_36 (DV), BirthdayBoy_39 (DV), Charminar_36 (DV), DoobyDoo_37 (DV), Erutan_38 (DV), Fulcrum_39 (DV), GOATification_39 (DV), Genamy16_39 (DV), Gibbin_39 (DV), Gretellyn_38 (DV), Jalebi_37 (DV), Jamemuya19_36 (DV), LavAbarElk_36 (DV), Lila22_37 (DV), LuckyLeo_37 (DV), Mima20_36 (DV), MoiGyank_40 (DV), NorManre_39 (DV), NovaSharks_38 (DV), OtterstedtS21_38 (DV), ParvusTarda_38 (DV), Patos_39 (DV), Pywacket_37 (DV), RazorC_37 (DV), Rota_37 (DV), Rukungu_38 (DV), Rumi_38 (DV), Sadboi_39 (DV), Sampudon_38 (DV), Tillicus_37 (DV), Wojtek_37 (DV), Zany_37 (DV),

Start 34:

- Found in 60 of 149 (40.3%) of genes in pham
- Manual Annotations of this start: 18 of 131
- Called 30.0% of time when present
- Phage (with cluster) where this start called: BossLady_25 (AO2), Chipper1996_280 (AR), Chocolat_28 (AR), Chubster_28 (AR), Conboy_28 (AR), DaviePasture_38 (DV), EdgarPoe_28 (AR), HumptyDumpty_28 (AR), Kabreeze_28 (AR), Lambo_38 (DV), Martha_25 (AO2), Pippa_25 (AO2), PrincessTrina_28 (AR), Ranch_38 (DV), Riduram_36 (DV), RosiePosie_28 (AR), Scavito_28 (AR), Yikes_39 (DV),

Start 35:

- Found in 56 of 149 (37.6%) of genes in pham
- Manual Annotations of this start: 35 of 131
- Called 67.9% of time when present
- Phage (with cluster) where this start called: Abba_24 (AO3), BarretLemon_25 (AO2), Beans_23 (AO1), Bolt007_25 (FH), Brent_23 (AO1), CalWood4100_26 (FH), Colucci_27 (AR), DrYang_28 (AR), EastWest_26 (AO), Franzy_23 (AO1), GravityBall_25 (AO2), Grekaycon_25 (AO2), JKerns_25 (AO2), JaNo_28 (AR), Jawnski_23 (AO1), JayCookie_28 (AR), Jordan_25 (AO2), KBurrousTX_28 (AR), LeeroyJ_25 (AO2), Lilmac1015_26 (FH), Linus_28 (AR), Lymara_28 (AR), Mordred_28 (AR), MoyaNatalis_28 (AR), Nandito_24 (FH), NathanVaag_23 (AO1), Nostromo_24 (AO3), Piccoletto_23 (AO1), Prairie_24 (FH), Shade_25 (AO2), Sicarius2_26 (AO2), Sonny_25 (AO2), StevieBAY_25 (AO2), TaeYoung_25 (AO2),

Timinator_25 (AO2), Tophat_28 (AR), Wyborn_26 (AO2), Zartrosa_25 (AO2),

Start 36:

- Found in 4 of 149 (2.7%) of genes in pham
- Manual Annotations of this start: 1 of 131
- Called 75.0% of time when present
- Phage (with cluster) where this start called: Applejacks_23 (CD), Reynauld_36 (CH), Srilaccoli3_33 (CH),

Start 37:

- Found in 1 of 149 (0.7%) of genes in pham
- No Manual Annotations of this start.
- Called 100.0% of time when present
- Phage (with cluster) where this start called: DocB7_028 (singleton),

Start 38:

- Found in 2 of 149 (1.3%) of genes in pham
- Manual Annotations of this start: 2 of 131
- Called 100.0% of time when present
- Phage (with cluster) where this start called: Ranunculus_39 (AP), Shambre1_23 (singleton),

Start 39:

- Found in 6 of 149 (4.0%) of genes in pham
- Manual Annotations of this start: 1 of 131
- Called 16.7% of time when present
- Phage (with cluster) where this start called: Klevey_25 (FH),

Start 40:

- Found in 24 of 149 (16.1%) of genes in pham
- Manual Annotations of this start: 21 of 131
- Called 87.5% of time when present
- Phage (with cluster) where this start called: Agueybana_23 (CZ1), AlumE_23 (CZ1), Antonio_24 (CZ1), ArchiDore_27 (DW), BaxterFox_22 (CZ3), BoyNamedSue_23 (CZ1), Eudoria_24 (CZ1), Eyre_20 (singleton), Hyzer_24 (CZ1), Kita_24 (CZ1), Manasvini_24 (CZ1), Maridalia_23 (CZ1), Neobush_24 (CZ1), PantheRoc_23 (CZ3), Petra_24 (CV), Shocker_24 (singleton), Suscepit_24 (CZ1), Tayonia_24 (CZ1), Trumpet_24 (CZ1), Yeezy_24 (CZ3), Zameen_24 (CZ1),

Start 41:

- Found in 8 of 149 (5.4%) of genes in pham
- Manual Annotations of this start: 1 of 131
- Called 12.5% of time when present
- Phage (with cluster) where this start called: King2_23 (AO1),

Start 43:

- Found in 5 of 149 (3.4%) of genes in pham
- Manual Annotations of this start: 3 of 131
- Called 60.0% of time when present
- Phage (with cluster) where this start called: Altadena_24 (FH), Bumble_24 (FH), Circuit_24 (FH),

Start 51:

- Found in 71 of 149 (47.7%) of genes in pham
- No Manual Annotations of this start.
- Called 1.4% of time when present
- Phage (with cluster) where this start called: Stormer_38 (DV),

Summary by clusters:

There are 20 clusters represented in this pham: AP1, singleton, CH, AO, AP, AP2, AP3, CZ1, AP4, CD, FH, AR, AO3, AO2, AO1, CZ3, DV, DW, UNK, CV,

Info for manual annotations of cluster AO:

- Start number 35 was manually annotated 1 time for cluster AO.

Info for manual annotations of cluster AO1:

- Start number 35 was manually annotated 6 times for cluster AO1.
- Start number 41 was manually annotated 1 time for cluster AO1.

Info for manual annotations of cluster AO2:

- Start number 34 was manually annotated 3 times for cluster AO2.
- Start number 35 was manually annotated 14 times for cluster AO2.

Info for manual annotations of cluster AO3:

- Start number 35 was manually annotated 2 times for cluster AO3.

Info for manual annotations of cluster AP:

- Start number 38 was manually annotated 1 time for cluster AP.

Info for manual annotations of cluster AP1:

- Start number 25 was manually annotated 1 time for cluster AP1.

Info for manual annotations of cluster AP2:

- Start number 23 was manually annotated 12 times for cluster AP2.

Info for manual annotations of cluster AP3:

- Start number 23 was manually annotated 1 time for cluster AP3.

Info for manual annotations of cluster AP4:

- Start number 23 was manually annotated 2 times for cluster AP4.

Info for manual annotations of cluster AR:

- Start number 34 was manually annotated 10 times for cluster AR.
- Start number 35 was manually annotated 9 times for cluster AR.

Info for manual annotations of cluster CH:

- Start number 36 was manually annotated 1 time for cluster CH.

Info for manual annotations of cluster CV:

- Start number 40 was manually annotated 1 time for cluster CV.

Info for manual annotations of cluster CZ1:

- Start number 40 was manually annotated 14 times for cluster CZ1.

Info for manual annotations of cluster CZ3:

- Start number 40 was manually annotated 3 times for cluster CZ3.

Info for manual annotations of cluster DV:

- Start number 32 was manually annotated 32 times for cluster DV.
- Start number 34 was manually annotated 5 times for cluster DV.

Info for manual annotations of cluster DW:

- Start number 40 was manually annotated 1 time for cluster DW.

Info for manual annotations of cluster FH:

- Start number 35 was manually annotated 3 times for cluster FH.
- Start number 39 was manually annotated 1 time for cluster FH.
- Start number 43 was manually annotated 3 times for cluster FH.

Gene Information:

Gene: AWGoat_35 Start: 33444, Stop: 33779, Start Num: 23

Candidate Starts for AWGoat_35:

(Start: 23 @33444 has 15 MA's), (30, 33480), (50, 33549), (51, 33552), (54, 33561), (81, 33675), (91, 33729), (92, 33732), (97, 33741),

Gene: Abba_24 Start: 22694, Stop: 22966, Start Num: 35

Candidate Starts for Abba_24:

(Start: 35 @22694 has 35 MA's), (53, 22742), (59, 22760), (63, 22778), (65, 22784), (70, 22802), (92, 22919),

Gene: Agueybana_23 Start: 21382, Stop: 21633, Start Num: 40

Candidate Starts for Agueybana_23:

(Start: 40 @21382 has 21 MA's), (54, 21442), (63, 21472), (76, 21526), (85, 21559), (89, 21583), (92, 21601), (98, 21613),

Gene: Alephilan_35 Start: 31809, Stop: 32081, Start Num: 32

Candidate Starts for Alephilan_35:

(Start: 32 @31809 has 32 MA's), (Start: 34 @31812 has 18 MA's), (50, 31878), (51, 31881), (56, 31896), (59, 31905), (61, 31917), (78, 31980), (80, 31989), (90, 32037), (92, 32049),

Gene: Altadena_24 Start: 21892, Stop: 22152, Start Num: 43

Candidate Starts for Altadena_24:

(3, 21250), (6, 21340), (7, 21370), (10, 21526), (11, 21637), (22, 21814), (Start: 43 @21892 has 3 MA's), (46, 21907), (92, 22117),

Gene: AlumE_23 Start: 21381, Stop: 21632, Start Num: 40

Candidate Starts for AlumE_23:

(Start: 40 @21381 has 21 MA's), (54, 21441), (63, 21471), (76, 21525), (85, 21558), (89, 21582), (92, 21600), (98, 21612),

Gene: Alyssamiracle_39 Start: 30903, Stop: 31175, Start Num: 32

Candidate Starts for Alyssamiracle_39:

(Start: 32 @30903 has 32 MA's), (Start: 34 @30906 has 18 MA's), (50, 30972), (51, 30975), (56, 30990), (59, 30999), (63, 31014), (78, 31074), (85, 31101), (92, 31143),

Gene: Antonio_24 Start: 21502, Stop: 21753, Start Num: 40

Candidate Starts for Antonio_24:

(Start: 40 @21502 has 21 MA's), (54, 21562), (63, 21592), (76, 21646), (85, 21679), (89, 21703), (92, 21721), (98, 21733),

Gene: Apeppi_35 Start: 31991, Stop: 32263, Start Num: 32

Candidate Starts for Apeppi_35:

(Start: 32 @31991 has 32 MA's), (Start: 35 @31997 has 35 MA's), (51, 32063), (53, 32069), (60, 32090), (80, 32171),

Gene: Applejacks_23 Start: 18683, Stop: 18985, Start Num: 36

Candidate Starts for Applejacks_23:

(Start: 34 @18677 has 18 MA's), (Start: 36 @18683 has 1 MA's), (57, 18767), (61, 18785), (69, 18806), (72, 18815), (74, 18839), (83, 18878), (96, 18932),

Gene: ArchiDore_27 Start: 23687, Stop: 23947, Start Num: 40

Candidate Starts for ArchiDore_27:

(Start: 40 @23687 has 21 MA's), (55, 23750), (59, 23762),

Gene: Astralis_36 Start: 30493, Stop: 30765, Start Num: 32

Candidate Starts for Astralis_36:

(Start: 32 @30493 has 32 MA's), (Start: 34 @30496 has 18 MA's), (50, 30562), (51, 30565), (56, 30580), (59, 30589), (63, 30604), (78, 30664), (85, 30691), (92, 30733),

Gene: Avian_36 Start: 30885, Stop: 31157, Start Num: 32

Candidate Starts for Avian_36:

(Start: 32 @30885 has 32 MA's), (Start: 34 @30888 has 18 MA's), (50, 30954), (51, 30957), (56, 30972), (59, 30981), (63, 30996), (78, 31056), (85, 31083), (92, 31125),

Gene: BarretLemon_25 Start: 22825, Stop: 23112, Start Num: 35

Candidate Starts for BarretLemon_25:

(Start: 35 @22825 has 35 MA's), (47, 22861), (55, 22891), (63, 22921), (87, 23029), (90, 23050), (92, 23062),

Gene: BaxterFox_22 Start: 20708, Stop: 20956, Start Num: 40

Candidate Starts for BaxterFox_22:

(Start: 40 @20708 has 21 MA's), (47, 20741), (54, 20768), (55, 20771), (63, 20798), (89, 20909), (92, 20927), (98, 20939),

Gene: Beagle_46 Start: 34747, Stop: 35091, Start Num: 23

Candidate Starts for Beagle_46:

(17, 34687), (20, 34723), (Start: 23 @34747 has 15 MA's), (28, 34783), (49, 34855), (58, 34885), (71, 34930), (81, 34987), (82, 34990), (92, 35044),

Gene: Beans_23 Start: 22491, Stop: 22778, Start Num: 35

Candidate Starts for Beans_23:

(21, 22416), (Start: 35 @22491 has 35 MA's), (51, 22545), (81, 22671), (88, 22704), (90, 22716), (92, 22728),

Gene: BetaFish_44 Start: 34941, Stop: 35285, Start Num: 23

Candidate Starts for BetaFish_44:

(17, 34881), (18, 34890), (20, 34917), (Start: 23 @34941 has 15 MA's), (28, 34977), (49, 35049), (58, 35079), (71, 35124), (81, 35181), (82, 35184), (92, 35238),

Gene: BirthdayBoy_39 Start: 32632, Stop: 32904, Start Num: 32

Candidate Starts for BirthdayBoy_39:

(Start: 32 @32632 has 32 MA's), (Start: 34 @32635 has 18 MA's), (50, 32701), (51, 32704), (56, 32719), (59, 32728), (61, 32740), (63, 32743), (78, 32803), (80, 32812), (85, 32830), (90, 32860), (92, 32872),

Gene: Bolt007_25 Start: 20917, Stop: 21198, Start Num: 35

Candidate Starts for Bolt007_25:

(3, 20293), (6, 20383), (9, 20560), (10, 20572), (22, 20863), (Start: 35 @20917 has 35 MA's), (Start: 39 @20920 has 1 MA's), (47, 20953), (92, 21154), (97, 21163),

Gene: BossLady_25 Start: 22799, Stop: 23089, Start Num: 34

Candidate Starts for BossLady_25:

(21, 22727), (Start: 34 @22799 has 18 MA's), (Start: 35 @22802 has 35 MA's), (47, 22838), (63, 22898), (87, 23006), (88, 23015), (90, 23027), (92, 23039),

Gene: BoyNamedSue_23 Start: 21381, Stop: 21632, Start Num: 40

Candidate Starts for BoyNamedSue_23:

(Start: 40 @21381 has 21 MA's), (54, 21441), (63, 21471), (76, 21525), (85, 21558), (89, 21582), (92, 21600), (98, 21612),

Gene: Brent_23 Start: 22473, Stop: 22760, Start Num: 35

Candidate Starts for Brent_23:

(Start: 35 @22473 has 35 MA's), (45, 22497), (81, 22653), (90, 22698), (92, 22710),

Gene: BruhMoment_42 Start: 36111, Stop: 36455, Start Num: 23

Candidate Starts for BruhMoment_42:

(12, 35940), (13, 35952), (Start: 23 @36111 has 15 MA's), (51, 36228), (63, 36267), (64, 36270), (67, 36276), (81, 36351), (90, 36396), (92, 36408),

Gene: Bubbykins_27 Start: 23094, Stop: 23369, Start Num: 31

Candidate Starts for Bubbykins_27:

(29, 23091), (31, 23094), (45, 23118), (58, 23169), (63, 23190), (71, 23217), (75, 23244), (79, 23268), (81, 23274), (85, 23289), (92, 23331),

Gene: Bumble_24 Start: 21766, Stop: 22026, Start Num: 43

Candidate Starts for Bumble_24:

(Start: 43 @21766 has 3 MA's), (92, 21991),

Gene: CalWood4100_26 Start: 20907, Stop: 21188, Start Num: 35

Candidate Starts for CalWood4100_26:

(11, 20673), (22, 20853), (Start: 35 @20907 has 35 MA's), (Start: 39 @20910 has 1 MA's), (92, 21144), (97, 21153),

Gene: Charminar_36 Start: 30496, Stop: 30768, Start Num: 32

Candidate Starts for Charminar_36:

(Start: 32 @30496 has 32 MA's), (Start: 34 @30499 has 18 MA's), (50, 30565), (51, 30568), (56, 30583), (59, 30592), (63, 30607), (78, 30667), (85, 30694), (92, 30736),

Gene: Chipper1996_280 Start: 25644, Stop: 25934, Start Num: 34

Candidate Starts for Chipper1996_280:

(21, 25575), (Start: 34 @25644 has 18 MA's), (Start: 35 @25647 has 35 MA's), (51, 25701), (54, 25710), (55, 25713), (56, 25716), (63, 25743), (75, 25797), (79, 25821), (85, 25842), (87, 25851), (88, 25860), (90, 25872), (92, 25884), (97, 25893),

Gene: Chocolat_28 Start: 25644, Stop: 25934, Start Num: 34

Candidate Starts for Chocolat_28:

(21, 25575), (Start: 34 @25644 has 18 MA's), (Start: 35 @25647 has 35 MA's), (51, 25701), (54, 25710), (55, 25713), (56, 25716), (63, 25743), (75, 25797), (79, 25821), (85, 25842), (87, 25851), (88, 25860), (90, 25872), (92, 25884), (97, 25893),

Gene: Chubster_28 Start: 25415, Stop: 25705, Start Num: 34

Candidate Starts for Chubster_28:

(21, 25346), (Start: 34 @25415 has 18 MA's), (Start: 35 @25418 has 35 MA's), (51, 25472), (54, 25481), (55, 25484), (56, 25487), (63, 25514), (75, 25568), (79, 25592), (85, 25613), (87, 25622), (88, 25631), (90, 25643), (92, 25655), (97, 25664),

Gene: Circuit_24 Start: 21828, Stop: 22088, Start Num: 43

Candidate Starts for Circuit_24:

(22, 21753), (Start: 43 @21828 has 3 MA's), (53, 21876), (81, 21996), (92, 22053),

Gene: Colucci_27 Start: 25113, Stop: 25400, Start Num: 35

Candidate Starts for Colucci_27:

(21, 25041), (Start: 35 @25113 has 35 MA's), (54, 25176), (79, 25287), (87, 25317), (88, 25326), (90, 25338), (92, 25350),

Gene: Conboy_28 Start: 25643, Stop: 25933, Start Num: 34

Candidate Starts for Conboy_28:

(21, 25574), (Start: 34 @25643 has 18 MA's), (Start: 35 @25646 has 35 MA's), (51, 25700), (54, 25709), (55, 25712), (56, 25715), (63, 25742), (75, 25796), (79, 25820), (85, 25841), (87, 25850), (88, 25859), (90, 25871), (92, 25883), (97, 25892),

Gene: DaviePasture_38 Start: 32439, Stop: 32708, Start Num: 34

Candidate Starts for DaviePasture_38:

(Start: 32 @32436 has 32 MA's), (Start: 34 @32439 has 18 MA's), (50, 32505), (51, 32508), (56, 32523), (59, 32532), (61, 32544), (63, 32547), (78, 32607), (80, 32616), (85, 32634), (90, 32664), (92, 32676),

Gene: DocB7_028 Start: 33620, Stop: 33901, Start Num: 37

Candidate Starts for DocB7_028:

(Start: 36 @33617 has 1 MA's), (37, 33620), (63, 33716), (68, 33731), (100, 33887),

Gene: DogYard_45 Start: 34641, Stop: 34985, Start Num: 23

Candidate Starts for DogYard_45:

(17, 34581), (18, 34590), (20, 34617), (Start: 23 @34641 has 15 MA's), (28, 34677), (49, 34749), (58, 34779), (71, 34824), (81, 34881), (82, 34884), (92, 34938),

Gene: DoobyDoo_37 Start: 31583, Stop: 31855, Start Num: 32

Candidate Starts for DoobyDoo_37:

(Start: 32 @31583 has 32 MA's), (Start: 34 @31586 has 18 MA's), (50, 31652), (51, 31655), (56, 31670), (59, 31679), (61, 31691), (63, 31694), (78, 31754), (80, 31763), (85, 31781), (90, 31811), (92, 31823),

Gene: DrYang_28 Start: 26738, Stop: 27025, Start Num: 35

Candidate Starts for DrYang_28:

(Start: 35 @26738 has 35 MA's), (51, 26792), (54, 26801), (55, 26804), (62, 26831), (75, 26888), (79, 26912), (88, 26951), (90, 26963), (92, 26975), (101, 27017),

Gene: EastWest_26 Start: 22751, Stop: 23047, Start Num: 35

Candidate Starts for EastWest_26:

(21, 22676), (Start: 35 @22751 has 35 MA's), (45, 22775), (47, 22787), (51, 22805), (55, 22817), (63, 22847), (69, 22865), (88, 22964), (91, 22985),

Gene: EdgarPoe_28 Start: 25643, Stop: 25933, Start Num: 34

Candidate Starts for EdgarPoe_28:

(21, 25574), (Start: 34 @25643 has 18 MA's), (Start: 35 @25646 has 35 MA's), (51, 25700), (54, 25709), (55, 25712), (56, 25715), (63, 25742), (75, 25796), (79, 25820), (85, 25841), (87, 25850), (88, 25859), (90, 25871), (92, 25883), (97, 25892),

Gene: Erutan_38 Start: 32091, Stop: 32363, Start Num: 32

Candidate Starts for Erutan_38:

(Start: 32 @32091 has 32 MA's), (Start: 34 @32094 has 18 MA's), (51, 32163), (56, 32178), (61, 32199), (63, 32202), (78, 32262), (80, 32271), (85, 32289), (90, 32319), (92, 32331),

Gene: Eudoria_24 Start: 21502, Stop: 21753, Start Num: 40

Candidate Starts for Eudoria_24:

(Start: 40 @21502 has 21 MA's), (54, 21562), (63, 21592), (76, 21646), (85, 21679), (89, 21703), (92, 21721), (98, 21733),

Gene: Eyre_20 Start: 18730, Stop: 18987, Start Num: 40

Candidate Starts for Eyre_20:

(Start: 40 @18730 has 21 MA's), (47, 18763), (54, 18790), (56, 18796), (58, 18802), (63, 18820), (84, 18904), (89, 18931), (92, 18949),

Gene: Forrestell_42 Start: 33116, Stop: 33460, Start Num: 23

Candidate Starts for Forrestell_42:

(17, 33056), (Start: 23 @33116 has 15 MA's), (28, 33152), (Start: 41 @33179 has 1 MA's), (49, 33224), (58, 33254), (71, 33299), (81, 33356), (82, 33359), (92, 33413),

Gene: Franzy_23 Start: 22472, Stop: 22759, Start Num: 35

Candidate Starts for Franzy_23:

(Start: 35 @22472 has 35 MA's), (45, 22496), (81, 22652), (90, 22697), (92, 22709),

Gene: Fulcrum_39 Start: 32612, Stop: 32884, Start Num: 32

Candidate Starts for Fulcrum_39:

(Start: 32 @32612 has 32 MA's), (Start: 34 @32615 has 18 MA's), (50, 32681), (51, 32684), (56, 32699), (59, 32708), (61, 32720), (63, 32723), (78, 32783), (80, 32792), (85, 32810), (90, 32840), (92, 32852),

Gene: GOATification_39 Start: 32612, Stop: 32884, Start Num: 32

Candidate Starts for GOATification_39:

(Start: 32 @32612 has 32 MA's), (Start: 34 @32615 has 18 MA's), (50, 32681), (51, 32684), (56, 32699), (59, 32708), (61, 32720), (63, 32723), (78, 32783), (80, 32792), (85, 32810), (90, 32840), (92, 32852),

Gene: Genamy16_39 Start: 30903, Stop: 31175, Start Num: 32

Candidate Starts for Genamy16_39:

(Start: 32 @30903 has 32 MA's), (Start: 34 @30906 has 18 MA's), (50, 30972), (51, 30975), (56, 30990), (59, 30999), (63, 31014), (78, 31074), (85, 31101), (92, 31143),

Gene: Gibbin_39 Start: 32710, Stop: 32982, Start Num: 32

Candidate Starts for Gibbin_39:

(Start: 32 @32710 has 32 MA's), (Start: 34 @32713 has 18 MA's), (50, 32779), (51, 32782), (56, 32797), (59, 32806), (61, 32818), (63, 32821), (78, 32881), (80, 32890), (85, 32908), (90, 32938), (92, 32950),

Gene: GravityBall_25 Start: 22824, Stop: 23111, Start Num: 35

Candidate Starts for GravityBall_25:

(Start: 35 @22824 has 35 MA's), (47, 22860), (55, 22890), (63, 22920), (87, 23028), (90, 23049), (92, 23061),

Gene: Grekaycon_25 Start: 22811, Stop: 23101, Start Num: 35

Candidate Starts for Grekaycon_25:

(Start: 35 @22811 has 35 MA's), (61, 22901), (63, 22907), (87, 23015), (92, 23048), (95, 23054),

Gene: Gretellyn_38 Start: 32976, Stop: 33248, Start Num: 32

Candidate Starts for Gretellyn_38:

(Start: 32 @32976 has 32 MA's), (Start: 34 @32979 has 18 MA's), (50, 33045), (51, 33048), (56, 33063), (59, 33072), (61, 33084), (63, 33087), (78, 33147), (80, 33156), (85, 33174), (90, 33204), (92, 33216),

Gene: Gudmit_21 Start: 18691, Stop: 19032, Start Num: 24

Candidate Starts for Gudmit_21:

(15, 18556), (Start: 24 @18691 has 1 MA's), (47, 18769), (55, 18799), (59, 18811), (92, 18967),

Gene: Hive_43 Start: 34822, Stop: 35166, Start Num: 23

Candidate Starts for Hive_43:

(16, 34756), (17, 34762), (18, 34771), (20, 34798), (Start: 23 @34822 has 15 MA's), (28, 34858), (49, 34930), (58, 34960), (71, 35005), (81, 35062), (82, 35065), (92, 35119),

Gene: HumptyDumpty_28 Start: 25642, Stop: 25932, Start Num: 34

Candidate Starts for HumptyDumpty_28:

(21, 25573), (Start: 34 @25642 has 18 MA's), (Start: 35 @25645 has 35 MA's), (51, 25699), (54, 25708), (55, 25711), (56, 25714), (63, 25741), (75, 25795), (79, 25819), (85, 25840), (87, 25849), (88, 25858), (90, 25870), (92, 25882), (97, 25891),

Gene: Hyzer_24 Start: 22048, Stop: 22296, Start Num: 40

Candidate Starts for Hyzer_24:

(Start: 40 @22048 has 21 MA's), (44, 22066), (53, 22105), (54, 22108), (55, 22111), (63, 22138), (89, 22249), (92, 22267),

Gene: JKerns_25 Start: 22838, Stop: 23128, Start Num: 35

Candidate Starts for JKerns_25:

(Start: 35 @22838 has 35 MA's), (63, 22934), (87, 23042), (92, 23075), (95, 23081),

Gene: JaNo_28 Start: 25645, Stop: 25932, Start Num: 35

Candidate Starts for JaNo_28:

(21, 25573), (Start: 34 @25642 has 18 MA's), (Start: 35 @25645 has 35 MA's), (51, 25699), (54, 25708), (55, 25711), (56, 25714), (63, 25741), (75, 25795), (79, 25819), (85, 25840), (87, 25849), (88, 25858), (90, 25870), (92, 25882), (97, 25891),

Gene: Jalebi_37 Start: 33145, Stop: 33417, Start Num: 32

Candidate Starts for Jalebi_37:

(Start: 32 @33145 has 32 MA's), (Start: 34 @33148 has 18 MA's), (50, 33214), (51, 33217), (56, 33232), (59, 33241), (61, 33253), (63, 33256), (78, 33316), (80, 33325), (85, 33343), (90, 33373), (92, 33385),

Gene: Jamemuya19_36 Start: 30493, Stop: 30765, Start Num: 32

Candidate Starts for Jamemuya19_36:

(Start: 32 @30493 has 32 MA's), (Start: 34 @30496 has 18 MA's), (50, 30562), (51, 30565), (56, 30580), (59, 30589), (63, 30604), (78, 30664), (85, 30691), (92, 30733),

Gene: Jawnski_23 Start: 22486, Stop: 22773, Start Num: 35

Candidate Starts for Jawnski_23:

(21, 22411), (Start: 35 @22486 has 35 MA's), (51, 22540), (81, 22666), (90, 22711), (92, 22723),

Gene: JayCookie_28 Start: 25648, Stop: 25935, Start Num: 35

Candidate Starts for JayCookie_28:

(21, 25576), (Start: 34 @25645 has 18 MA's), (Start: 35 @25648 has 35 MA's), (51, 25702), (54, 25711), (55, 25714), (56, 25717), (63, 25744), (75, 25798), (79, 25822), (85, 25843), (87, 25852), (88, 25861), (90, 25873), (92, 25885), (97, 25894),

Gene: Jordan_25 Start: 22808, Stop: 23098, Start Num: 35

Candidate Starts for Jordan_25:

(Start: 35 @22808 has 35 MA's), (63, 22904), (87, 23012), (92, 23045), (95, 23051),

Gene: KBurrousTX_28 Start: 26559, Stop: 26852, Start Num: 35

Candidate Starts for KBurrousTX_28:

(Start: 35 @26559 has 35 MA's), (47, 26595), (51, 26613), (55, 26625), (79, 26733), (88, 26772), (90, 26784), (92, 26796),

Gene: Kabreeze_28 Start: 25642, Stop: 25932, Start Num: 34

Candidate Starts for Kabreeze_28:

(21, 25573), (Start: 34 @25642 has 18 MA's), (Start: 35 @25645 has 35 MA's), (51, 25699), (54, 25708), (55, 25711), (56, 25714), (63, 25741), (75, 25795), (79, 25819), (85, 25840), (87, 25849), (88, 25858), (90, 25870), (92, 25882), (97, 25891),

Gene: King2_23 Start: 22491, Stop: 22778, Start Num: 41

Candidate Starts for King2_23:

(21, 22401), (Start: 35 @22476 has 35 MA's), (Start: 41 @22491 has 1 MA's), (45, 22515), (81, 22671), (90, 22716), (92, 22728),

Gene: Kita_24 Start: 21502, Stop: 21753, Start Num: 40

Candidate Starts for Kita_24:

(Start: 40 @21502 has 21 MA's), (54, 21562), (63, 21592), (76, 21646), (85, 21679), (89, 21703), (92, 21721), (98, 21733),

Gene: Klevey_25 Start: 20920, Stop: 21198, Start Num: 39

Candidate Starts for Klevey_25:

(11, 20683), (22, 20863), (Start: 35 @20917 has 35 MA's), (Start: 39 @20920 has 1 MA's), (92, 21154), (97, 21163),

Gene: Kubulix_46 Start: 34589, Stop: 34933, Start Num: 23

Candidate Starts for Kubulix_46:

(17, 34529), (20, 34565), (Start: 23 @34589 has 15 MA's), (28, 34625), (49, 34697), (58, 34727), (71, 34772), (81, 34829), (82, 34832), (92, 34886),

Gene: Lambo_38 Start: 32633, Stop: 32902, Start Num: 34

Candidate Starts for Lambo_38:

(Start: 32 @32630 has 32 MA's), (Start: 34 @32633 has 18 MA's), (50, 32699), (51, 32702), (56, 32717), (59, 32726), (61, 32738), (63, 32741), (78, 32801), (85, 32828), (92, 32870),

Gene: LavAbarElk_36 Start: 31084, Stop: 31356, Start Num: 32

Candidate Starts for LavAbarElk_36:

(Start: 32 @31084 has 32 MA's), (Start: 34 @31087 has 18 MA's), (50, 31153), (51, 31156), (56, 31171), (59, 31180), (61, 31192), (63, 31195), (78, 31255), (80, 31264), (85, 31282), (90, 31312), (92, 31324),

Gene: LeeroyJ_25 Start: 22824, Stop: 23111, Start Num: 35

Candidate Starts for LeeroyJ_25:

(Start: 35 @22824 has 35 MA's), (47, 22860), (55, 22890), (63, 22920), (87, 23028), (90, 23049), (92, 23061),

Gene: Lila22_37 Start: 32585, Stop: 32857, Start Num: 32

Candidate Starts for Lila22_37:

(Start: 32 @32585 has 32 MA's), (Start: 34 @32588 has 18 MA's), (50, 32654), (51, 32657), (56, 32672), (59, 32681), (61, 32693), (63, 32696), (78, 32756), (80, 32765), (85, 32783), (90, 32813), (92, 32825),

Gene: Lilmac1015_26 Start: 20907, Stop: 21188, Start Num: 35

Candidate Starts for Lilmac1015_26:

(11, 20673), (22, 20853), (Start: 35 @20907 has 35 MA's), (Start: 39 @20910 has 1 MA's), (92, 21144), (97, 21153),

Gene: Linus_28 Start: 25645, Stop: 25932, Start Num: 35

Candidate Starts for Linus_28:

(21, 25573), (Start: 34 @25642 has 18 MA's), (Start: 35 @25645 has 35 MA's), (51, 25699), (54, 25708), (55, 25711), (56, 25714), (63, 25741), (75, 25795), (79, 25819), (85, 25840), (87, 25849), (88, 25858), (90, 25870), (92, 25882), (97, 25891),

Gene: LuckyLeo_37 Start: 31991, Stop: 32263, Start Num: 32

Candidate Starts for LuckyLeo_37:

(Start: 32 @31991 has 32 MA's), (Start: 35 @31997 has 35 MA's), (51, 32063), (53, 32069), (60, 32090), (80, 32171),

Gene: Lymara_28 Start: 25643, Stop: 25930, Start Num: 35

Candidate Starts for Lymara_28:

(21, 25571), (Start: 34 @25640 has 18 MA's), (Start: 35 @25643 has 35 MA's), (51, 25697), (54, 25706), (55, 25709), (56, 25712), (75, 25793), (77, 25805), (79, 25817), (85, 25838), (87, 25847), (88, 25856), (90, 25868), (92, 25880),

Gene: Manasvini_24 Start: 21502, Stop: 21753, Start Num: 40

Candidate Starts for Manasvini_24:

(Start: 40 @21502 has 21 MA's), (54, 21562), (63, 21592), (76, 21646), (85, 21679), (89, 21703), (92, 21721), (98, 21733),

Gene: Maridalia_23 Start: 21502, Stop: 21753, Start Num: 40

Candidate Starts for Maridalia_23:

(Start: 40 @21502 has 21 MA's), (54, 21562), (63, 21592), (76, 21646), (85, 21679), (89, 21703), (92, 21721), (98, 21733),

Gene: Martha_25 Start: 22746, Stop: 23036, Start Num: 34

Candidate Starts for Martha_25:

(21, 22674), (Start: 34 @22746 has 18 MA's), (Start: 35 @22749 has 35 MA's), (47, 22785), (63, 22845), (87, 22953), (88, 22962), (90, 22974), (92, 22986),

Gene: MellowYellow_42 Start: 33482, Stop: 33826, Start Num: 23

Candidate Starts for MellowYellow_42:

(17, 33422), (Start: 23 @33482 has 15 MA's), (28, 33518), (Start: 41 @33545 has 1 MA's), (49, 33590), (58, 33620), (71, 33665), (81, 33722), (82, 33725), (92, 33779),

Gene: Mima20_36 Start: 32334, Stop: 32606, Start Num: 32

Candidate Starts for Mima20_36:

(Start: 32 @32334 has 32 MA's), (Start: 34 @32337 has 18 MA's), (50, 32403), (51, 32406), (56, 32421), (59, 32430), (61, 32442), (63, 32445), (78, 32505), (80, 32514), (85, 32532), (90, 32562), (92, 32574),

Gene: MoiGyank_40 Start: 33015, Stop: 33287, Start Num: 32

Candidate Starts for MoiGyank_40:

(Start: 32 @33015 has 32 MA's), (Start: 34 @33018 has 18 MA's), (50, 33084), (51, 33087), (56, 33102), (59, 33111), (61, 33123), (63, 33126), (78, 33186), (80, 33195), (85, 33213), (90, 33243), (92, 33255),

Gene: Mordred_28 Start: 25645, Stop: 25932, Start Num: 35

Candidate Starts for Mordred_28:

(21, 25573), (Start: 34 @25642 has 18 MA's), (Start: 35 @25645 has 35 MA's), (51, 25699), (54, 25708), (55, 25711), (56, 25714), (63, 25741), (75, 25795), (79, 25819), (85, 25840), (87, 25849), (88, 25858), (90, 25870), (92, 25882), (97, 25891),

Gene: MoyaNatalis_28 Start: 25648, Stop: 25935, Start Num: 35

Candidate Starts for MoyaNatalis_28:

(21, 25576), (Start: 34 @25645 has 18 MA's), (Start: 35 @25648 has 35 MA's), (51, 25702), (54, 25711), (55, 25714), (56, 25717), (63, 25744), (75, 25798), (79, 25822), (85, 25843), (87, 25852), (88, 25861), (90, 25873), (92, 25885), (97, 25894),

Gene: Nandito_24 Start: 19902, Stop: 20183, Start Num: 35

Candidate Starts for Nandito_24:

(1, 19161), (2, 19218), (4, 19296), (5, 19308), (10, 19557), (11, 19668), (22, 19845), (Start: 35 @19902 has 35 MA's), (Start: 39 @19905 has 1 MA's), (71, 20025), (92, 20139), (97, 20148),

Gene: NathanVaag_23 Start: 22467, Stop: 22754, Start Num: 35

Candidate Starts for NathanVaag_23:

(Start: 35 @22467 has 35 MA's), (51, 22521), (81, 22647), (88, 22680), (90, 22692), (92, 22704),

Gene: Neobush_24 Start: 21502, Stop: 21753, Start Num: 40

Candidate Starts for Neobush_24:

(Start: 40 @21502 has 21 MA's), (54, 21562), (63, 21592), (76, 21646), (85, 21679), (89, 21703), (92, 21721), (98, 21733),

Gene: Nikan_43 Start: 33765, Stop: 34109, Start Num: 23

Candidate Starts for Nikan_43:

(Start: 23 @33765 has 15 MA's), (28, 33801), (Start: 41 @33828 has 1 MA's), (42, 33837), (51, 33882), (58, 33903), (71, 33948), (86, 34023),

Gene: NorManre_39 Start: 32221, Stop: 32493, Start Num: 32

Candidate Starts for NorManre_39:

(19, 32134), (Start: 32 @32221 has 32 MA's), (Start: 34 @32224 has 18 MA's), (50, 32290), (51, 32293), (56, 32308), (59, 32317), (61, 32329), (63, 32332), (78, 32392), (80, 32401), (85, 32419), (90, 32449), (92, 32461),

Gene: Nostromo_24 Start: 22545, Stop: 22817, Start Num: 35

Candidate Starts for Nostromo_24:

(14, 22365), (22, 22494), (Start: 35 @22545 has 35 MA's), (59, 22611), (63, 22629), (65, 22635), (70, 22653), (92, 22770),

Gene: NovaSharks_38 Start: 30493, Stop: 30765, Start Num: 32

Candidate Starts for NovaSharks_38:

(Start: 32 @30493 has 32 MA's), (Start: 34 @30496 has 18 MA's), (50, 30562), (51, 30565), (56, 30580), (59, 30589), (63, 30604), (78, 30664), (85, 30691), (92, 30733),

Gene: NyleyClemson_40 Start: 33097, Stop: 33441, Start Num: 23

Candidate Starts for NyleyClemson_40:

(17, 33037), (Start: 23 @33097 has 15 MA's), (28, 33133), (Start: 41 @33160 has 1 MA's), (49, 33205), (58, 33235), (71, 33280), (81, 33337), (82, 33340), (92, 33394),

Gene: Odyssey395_47 Start: 34766, Stop: 35110, Start Num: 23

Candidate Starts for Odyssey395_47:

(17, 34706), (18, 34715), (20, 34742), (Start: 23 @34766 has 15 MA's), (28, 34802), (49, 34874), (58, 34904), (71, 34949), (81, 35006), (82, 35009), (92, 35063),

Gene: Ollypop_43 Start: 34857, Stop: 35201, Start Num: 23

Candidate Starts for Ollypop_43:

(Start: 23 @34857 has 15 MA's), (28, 34893), (Start: 41 @34920 has 1 MA's), (42, 34929), (58, 34995), (71, 35040), (86, 35115), (94, 35157),

Gene: OtterstedtS21_38 Start: 32292, Stop: 32564, Start Num: 32

Candidate Starts for OtterstedtS21_38:

(Start: 32 @32292 has 32 MA's), (Start: 34 @32295 has 18 MA's), (50, 32361), (51, 32364), (56, 32379), (59, 32388), (61, 32400), (63, 32403), (78, 32463), (80, 32472), (85, 32490), (90, 32520), (92, 32532),

Gene: PantheRoc_23 Start: 20700, Stop: 20951, Start Num: 40

Candidate Starts for PantheRoc_23:

(Start: 40 @20700 has 21 MA's), (54, 20760), (63, 20790), (76, 20844), (85, 20877), (89, 20901), (92, 20919), (98, 20931),

Gene: ParvusTarda_38 Start: 31760, Stop: 32032, Start Num: 32

Candidate Starts for ParvusTarda_38:

(Start: 32 @31760 has 32 MA's), (Start: 34 @31763 has 18 MA's), (50, 31829), (51, 31832), (56, 31847), (59, 31856), (61, 31868), (63, 31871), (78, 31931), (80, 31940), (85, 31958), (90, 31988), (92, 32000),

Gene: Patos_39 Start: 32221, Stop: 32493, Start Num: 32

Candidate Starts for Patos_39:

(19, 32134), (Start: 32 @32221 has 32 MA's), (Start: 34 @32224 has 18 MA's), (50, 32290), (51, 32293), (56, 32308), (59, 32317), (61, 32329), (63, 32332), (78, 32392), (80, 32401), (85, 32419), (90, 32449), (92, 32461),

Gene: Petra_24 Start: 20354, Stop: 20602, Start Num: 40

Candidate Starts for Petra_24:

(8, 19934), (Start: 40 @20354 has 21 MA's), (44, 20372), (47, 20387), (56, 20420), (58, 20426), (61, 20441), (63, 20444), (76, 20498), (85, 20531), (89, 20555),

Gene: PhuzzTulsa_42 Start: 34726, Stop: 35070, Start Num: 23

Candidate Starts for PhuzzTulsa_42:

(17, 34666), (Start: 23 @34726 has 15 MA's), (28, 34762), (49, 34834), (58, 34864), (71, 34909), (81, 34966), (82, 34969), (92, 35023),

Gene: Piccoletto_23 Start: 22466, Stop: 22753, Start Num: 35

Candidate Starts for Piccoletto_23:

(Start: 35 @22466 has 35 MA's), (51, 22520), (81, 22646), (88, 22679), (90, 22691), (92, 22703),

Gene: Pippa_25 Start: 22844, Stop: 23134, Start Num: 34

Candidate Starts for Pippa_25:

(21, 22772), (Start: 34 @22844 has 18 MA's), (Start: 35 @22847 has 35 MA's), (47, 22883), (63, 22943), (88, 23060), (90, 23072), (92, 23084),

Gene: Pointis_44 Start: 34764, Stop: 35108, Start Num: 23

Candidate Starts for Pointis_44:

(17, 34704), (20, 34740), (Start: 23 @34764 has 15 MA's), (28, 34800), (49, 34872), (58, 34902), (71, 34947), (81, 35004), (82, 35007), (92, 35061),

Gene: Popstraw_42 Start: 34586, Stop: 34894, Start Num: 28

Candidate Starts for Popstraw_42:

(16, 34484), (17, 34490), (18, 34499), (20, 34526), (Start: 23 @34550 has 15 MA's), (28, 34586), (49, 34658), (58, 34688), (71, 34733), (81, 34790), (82, 34793), (92, 34847),

Gene: Prairie_24 Start: 20935, Stop: 21216, Start Num: 35

Candidate Starts for Prairie_24:

(11, 20701), (22, 20881), (Start: 35 @20935 has 35 MA's), (Start: 39 @20938 has 1 MA's), (92, 21172), (97, 21181),

Gene: PrincessTrina_28 Start: 25645, Stop: 25935, Start Num: 34

Candidate Starts for PrincessTrina_28:

(21, 25576), (Start: 34 @25645 has 18 MA's), (Start: 35 @25648 has 35 MA's), (51, 25702), (54, 25711), (55, 25714), (56, 25717), (63, 25744), (75, 25798), (79, 25822), (85, 25843), (87, 25852), (88, 25861), (90, 25873), (92, 25885), (97, 25894),

Gene: Pureglobe5_46 Start: 34947, Stop: 35291, Start Num: 23

Candidate Starts for Pureglobe5_46:

(17, 34887), (20, 34923), (Start: 23 @34947 has 15 MA's), (28, 34983), (49, 35055), (58, 35085), (71, 35130), (81, 35187), (82, 35190), (92, 35244),

Gene: Pywacket_37 Start: 33106, Stop: 33378, Start Num: 32

Candidate Starts for Pywacket_37:

(Start: 32 @33106 has 32 MA's), (Start: 34 @33109 has 18 MA's), (50, 33175), (51, 33178), (56, 33193), (59, 33202), (61, 33214), (63, 33217), (78, 33277), (80, 33286), (85, 33304), (90, 33334), (92, 33346),

Gene: RIPWilbur_43 Start: 34080, Stop: 34424, Start Num: 23

Candidate Starts for RIPWilbur_43:

(17, 34020), (Start: 23 @34080 has 15 MA's), (28, 34116), (49, 34188), (58, 34218), (71, 34263), (81, 34320), (82, 34323), (92, 34377),

Gene: Ranch_38 Start: 31121, Stop: 31390, Start Num: 34

Candidate Starts for Ranch_38:

(Start: 32 @31118 has 32 MA's), (Start: 34 @31121 has 18 MA's), (50, 31187), (51, 31190), (56, 31205), (59, 31214), (61, 31226), (63, 31229), (78, 31289), (80, 31298), (85, 31316), (90, 31346), (92, 31358),

Gene: Ranunculus_39 Start: 36875, Stop: 37153, Start Num: 38

Candidate Starts for Ranunculus_39:

(Start: 38 @36875 has 2 MA's), (Start: 40 @36878 has 21 MA's), (54, 36935), (57, 36944), (69, 36983), (93, 37106),

Gene: RazorC_37 Start: 30885, Stop: 31157, Start Num: 32

Candidate Starts for RazorC_37:

(Start: 32 @30885 has 32 MA's), (Start: 34 @30888 has 18 MA's), (50, 30954), (51, 30957), (56, 30972), (59, 30981), (63, 30996), (78, 31056), (85, 31083), (92, 31125),

Gene: RazzB_41 Start: 33228, Stop: 33572, Start Num: 23

Candidate Starts for RazzB_41:

(17, 33168), (Start: 23 @33228 has 15 MA's), (28, 33264), (Start: 41 @33291 has 1 MA's), (49, 33336), (58, 33366), (71, 33411), (81, 33468), (82, 33471), (92, 33525),

Gene: Ren19_41 Start: 33765, Stop: 34109, Start Num: 23

Candidate Starts for Ren19_41:

(Start: 23 @33765 has 15 MA's), (28, 33801), (Start: 41 @33828 has 1 MA's), (42, 33837), (51, 33882), (58, 33903), (71, 33948), (86, 34023),

Gene: Reynauld_36 Start: 37401, Stop: 37718, Start Num: 36

Candidate Starts for Reynauld_36:

(Start: 36 @37401 has 1 MA's), (Start: 40 @37410 has 21 MA's), (Start: 43 @37425 has 3 MA's), (49, 37458), (54, 37476), (66, 37515), (74, 37560), (98, 37662), (99, 37671), (102, 37713),

Gene: Riduram_36 Start: 30466, Stop: 30735, Start Num: 34

Candidate Starts for Riduram_36:

(Start: 32 @30463 has 32 MA's), (Start: 34 @30466 has 18 MA's), (50, 30532), (51, 30535), (56, 30550), (59, 30559), (63, 30574), (78, 30634), (85, 30661), (92, 30703),

Gene: Rizwana_35 Start: 34988, Stop: 35311, Start Num: 25

Candidate Starts for Rizwana_35:

(Start: 25 @34988 has 1 MA's), (27, 34997), (45, 35054), (62, 35120), (63, 35123), (73, 35162), (83, 35216), (85, 35222), (90, 35252),

Gene: RosiePosie_28 Start: 25645, Stop: 25935, Start Num: 34

Candidate Starts for RosiePosie_28:

(21, 25576), (Start: 34 @25645 has 18 MA's), (Start: 35 @25648 has 35 MA's), (51, 25702), (54, 25711), (55, 25714), (56, 25717), (63, 25744), (75, 25798), (79, 25822), (85, 25843), (87, 25852), (88, 25861), (90, 25873), (92, 25885), (97, 25894),

Gene: Rota_37 Start: 32501, Stop: 32773, Start Num: 32

Candidate Starts for Rota_37:

(Start: 32 @32501 has 32 MA's), (Start: 34 @32504 has 18 MA's), (50, 32570), (51, 32573), (56, 32588), (59, 32597), (61, 32609), (63, 32612), (78, 32672), (80, 32681), (85, 32699), (90, 32729), (92, 32741), (98, 32753),

Gene: Rukungu_38 Start: 32810, Stop: 33082, Start Num: 32

Candidate Starts for Rukungu_38:

(Start: 32 @32810 has 32 MA's), (Start: 34 @32813 has 18 MA's), (50, 32879), (51, 32882), (56, 32897), (59, 32906), (61, 32918), (63, 32921), (78, 32981), (80, 32990), (85, 33008), (90, 33038), (92, 33050),

Gene: Rumi_38 Start: 30496, Stop: 30768, Start Num: 32

Candidate Starts for Rumi_38:

(Start: 32 @30496 has 32 MA's), (Start: 34 @30499 has 18 MA's), (50, 30565), (51, 30568), (56, 30583), (59, 30592), (63, 30607), (78, 30667), (85, 30694), (92, 30736),

Gene: Sadboi_39 Start: 32977, Stop: 33249, Start Num: 32

Candidate Starts for Sadboi_39:

(Start: 32 @32977 has 32 MA's), (Start: 34 @32980 has 18 MA's), (50, 33046), (51, 33049), (56, 33064), (59, 33073), (61, 33085), (63, 33088), (78, 33148), (80, 33157), (85, 33175), (90, 33205), (92, 33217),

Gene: Sampudon_38 Start: 33145, Stop: 33417, Start Num: 32

Candidate Starts for Sampudon_38:

(Start: 32 @33145 has 32 MA's), (Start: 34 @33148 has 18 MA's), (50, 33214), (51, 33217), (56, 33232), (59, 33241), (61, 33253), (63, 33256), (78, 33316), (80, 33325), (85, 33343), (90, 33373), (92, 33385),

Gene: Scavito_28 Start: 25642, Stop: 25932, Start Num: 34

Candidate Starts for Scavito_28:

(21, 25573), (Start: 34 @25642 has 18 MA's), (Start: 35 @25645 has 35 MA's), (51, 25699), (54, 25708), (55, 25711), (56, 25714), (63, 25741), (75, 25795), (79, 25819), (85, 25840), (87, 25849), (88, 25858), (90, 25870), (92, 25882), (97, 25891),

Gene: Shade_25 Start: 22787, Stop: 23077, Start Num: 35

Candidate Starts for Shade_25:

(Start: 35 @22787 has 35 MA's), (61, 22877), (63, 22883), (87, 22991), (92, 23024), (95, 23030),

Gene: Shambre1_23 Start: 19730, Stop: 20017, Start Num: 38

Candidate Starts for Shambre1_23:

(26, 19694), (Start: 38 @19730 has 2 MA's), (54, 19787),

Gene: Shocker_24 Start: 13716, Stop: 13991, Start Num: 40

Candidate Starts for Shocker_24:

(Start: 40 @13716 has 21 MA's), (48, 13761), (50, 13770), (52, 13776), (87, 13920),

Gene: Sicarius2_26 Start: 23226, Stop: 23498, Start Num: 35

Candidate Starts for Sicarius2_26:

(Start: 35 @23226 has 35 MA's), (46, 23241), (54, 23277), (58, 23289), (63, 23310), (65, 23316), (79, 23388), (88, 23427), (91, 23448), (92, 23451),

Gene: SilentRX_37 Start: 34506, Stop: 34829, Start Num: 23

Candidate Starts for SilentRX_37:

(Start: 23 @34506 has 15 MA's), (33, 34551), (45, 34572), (50, 34599), (51, 34602), (54, 34611), (92, 34782), (97, 34791),

Gene: Sonny_25 Start: 22808, Stop: 23098, Start Num: 35

Candidate Starts for Sonny_25:

(Start: 35 @22808 has 35 MA's), (63, 22904), (87, 23012), (92, 23045), (95, 23051),

Gene: Srilaccoli3_33 Start: 36321, Stop: 36638, Start Num: 36

Candidate Starts for Srilaccoli3_33:

(Start: 36 @36321 has 1 MA's), (Start: 40 @36330 has 21 MA's), (Start: 43 @36345 has 3 MA's), (49, 36378), (54, 36396), (66, 36435), (98, 36582), (99, 36591),

Gene: StevieBAY_25 Start: 22824, Stop: 23111, Start Num: 35

Candidate Starts for StevieBAY_25:

(Start: 35 @22824 has 35 MA's), (47, 22860), (55, 22890), (63, 22920), (87, 23028), (90, 23049), (92, 23061),

Gene: Stormer_38 Start: 30571, Stop: 30771, Start Num: 51

Candidate Starts for Stormer_38:

(Start: 32 @30499 has 32 MA's), (Start: 34 @30502 has 18 MA's), (50, 30568), (51, 30571), (56, 30586), (59, 30595), (63, 30610), (78, 30670), (85, 30697), (92, 30739),

Gene: Suscepit_24 Start: 21502, Stop: 21753, Start Num: 40

Candidate Starts for Suscepit_24:

(Start: 40 @21502 has 21 MA's), (54, 21562), (63, 21592), (76, 21646), (85, 21679), (89, 21703), (92, 21721), (98, 21733),

Gene: TaeYoung_25 Start: 22812, Stop: 23102, Start Num: 35

Candidate Starts for TaeYoung_25:

(Start: 35 @22812 has 35 MA's), (61, 22902), (63, 22908), (87, 23016), (92, 23049), (95, 23055),

Gene: Tayonia_24 Start: 21502, Stop: 21753, Start Num: 40

Candidate Starts for Tayonia_24:

(Start: 40 @21502 has 21 MA's), (54, 21562), (63, 21592), (76, 21646), (85, 21679), (89, 21703), (92, 21721), (98, 21733),

Gene: Tillicus_37 Start: 31585, Stop: 31857, Start Num: 32

Candidate Starts for Tillicus_37:

(Start: 32 @31585 has 32 MA's), (Start: 35 @31591 has 35 MA's), (51, 31657), (53, 31663), (60, 31684), (80, 31765),

Gene: Timinator_25 Start: 22824, Stop: 23111, Start Num: 35

Candidate Starts for Timinator_25:

(Start: 35 @22824 has 35 MA's), (47, 22860), (55, 22890), (63, 22920), (87, 23028), (90, 23049), (92, 23061),

Gene: Tophat_28 Start: 25647, Stop: 25934, Start Num: 35

Candidate Starts for Tophat_28:

(21, 25575), (Start: 34 @25644 has 18 MA's), (Start: 35 @25647 has 35 MA's), (51, 25701), (54, 25710), (55, 25713), (56, 25716), (63, 25743), (75, 25797), (79, 25821), (85, 25842), (87, 25851), (88, 25860), (90, 25872), (92, 25884), (97, 25893),

Gene: Trumpet_24 Start: 21502, Stop: 21753, Start Num: 40

Candidate Starts for Trumpet_24:

(Start: 40 @21502 has 21 MA's), (54, 21562), (63, 21592), (76, 21646), (85, 21679), (89, 21703), (92, 21721), (98, 21733),

Gene: Wojtek_37 Start: 31844, Stop: 32116, Start Num: 32

Candidate Starts for Wojtek_37:

(Start: 32 @31844 has 32 MA's), (Start: 34 @31847 has 18 MA's), (50, 31913), (51, 31916), (56, 31931), (59, 31940), (61, 31952), (63, 31955), (78, 32015), (80, 32024), (85, 32042), (90, 32072), (92, 32084),

Gene: Wyborn_26 Start: 23201, Stop: 23473, Start Num: 35

Candidate Starts for Wyborn_26:

(Start: 35 @23201 has 35 MA's), (46, 23216), (55, 23255), (58, 23264), (63, 23285), (65, 23291), (79, 23363), (88, 23402), (92, 23426),

Gene: Yeezy_24 Start: 20724, Stop: 20975, Start Num: 40

Candidate Starts for Yeezy_24:

(Start: 40 @20724 has 21 MA's), (54, 20784), (63, 20814), (76, 20868), (85, 20901), (89, 20925), (92, 20943), (98, 20955),

Gene: Yikes_39 Start: 33227, Stop: 33496, Start Num: 34

Candidate Starts for Yikes_39:

(Start: 32 @33224 has 32 MA's), (Start: 34 @33227 has 18 MA's), (50, 33293), (51, 33296), (56, 33311), (59, 33320), (61, 33332), (63, 33335), (78, 33395), (80, 33404), (85, 33422), (90, 33452), (92, 33464),

Gene: Zameen_24 Start: 21502, Stop: 21753, Start Num: 40

Candidate Starts for Zameen_24:

(Start: 40 @21502 has 21 MA's), (54, 21562), (63, 21592), (76, 21646), (85, 21679), (89, 21703), (92, 21721), (98, 21733),

Gene: Zany_37 Start: 32749, Stop: 33021, Start Num: 32

Candidate Starts for Zany_37:

(Start: 32 @32749 has 32 MA's), (Start: 34 @32752 has 18 MA's), (50, 32818), (51, 32821), (56, 32836), (59, 32845), (61, 32857), (63, 32860), (78, 32920), (80, 32929), (85, 32947), (90, 32977), (92, 32989),

Gene: Zartrosa_25 Start: 22811, Stop: 23101, Start Num: 35

Candidate Starts for Zartrosa_25:

(Start: 35 @22811 has 35 MA's), (61, 22901), (87, 23015), (92, 23048), (95, 23054),