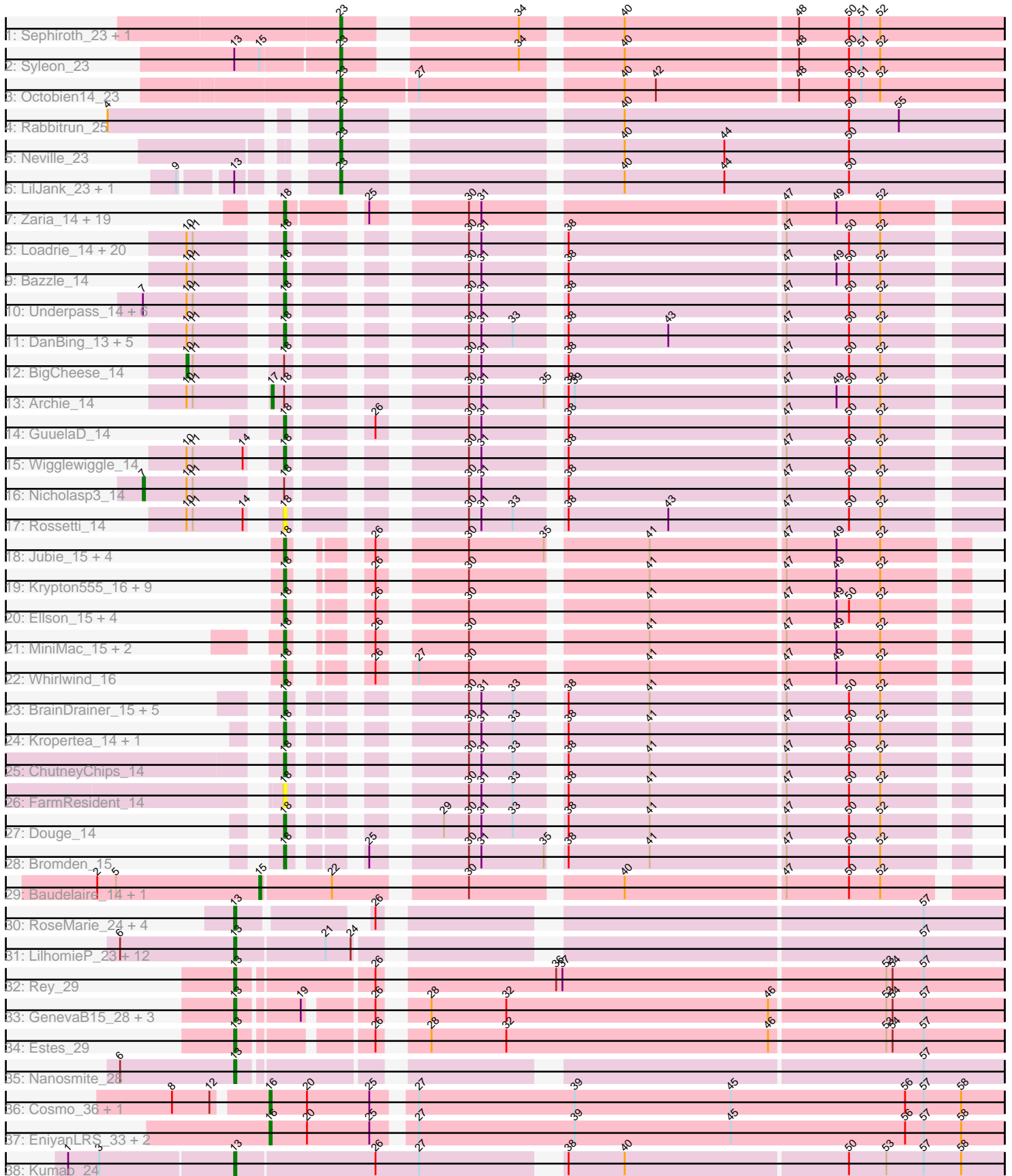


Pham 308238



Note: Tracks are now grouped by subcluster and scaled. Switching in subcluster is indicated by changes in track color. Track scale is now set by default to display the region 30 bp upstream of start 1 to 30 bp downstream of the last possible start. If this default region is judged to be packed too tightly with annotated starts, the track will be further scaled to only show that region of the ORF with annotated starts. This action will be indicated by adding "Zoomed" to the title. For starts, yellow indicates the location of called starts comprised solely of Glimmer/GeneMark auto-annotations, green indicates the location of called starts with at least 1 manual gene annotation.

## Pham 308238 Report

This analysis was run 06/27/26 on database version 652.

Pham number 308238 has 138 members, 25 are drafts.

Phages represented in each track:

- Track 1 : Sephiroth\_23, Kudefre\_22
- Track 2 : Syleon\_23
- Track 3 : Octobien14\_23
- Track 4 : Rabbitrun\_25
- Track 5 : Neville\_23
- Track 6 : LilJank\_23, Trax\_23
- Track 7 : Zaria\_14, Wyatt2\_14, Rose5\_14, Appletree2\_14, Silverleaf\_14, AvadaKedavra\_14, JoeDirt\_14, Tyson\_14, LeBron\_14, UPIE\_14, Halena\_14, CicholasNage\_14, Enceladus\_14, MAckerman\_14, Poochiewood\_14, Acquire49\_14, DirkDirk\_14, OhShagHennessy\_14, Wamburggrxpress\_14, Calm\_14
- Track 8 : Loadrie\_14, OverPar\_14, MkaliMitinis3\_14, Faith1\_15, Miley16\_14, DrSeegs\_14, BobsGarage\_14, Lewan\_14, Gabriela\_14, Zakai\_14, Hafay\_14, Vetric\_14, Soap141\_14, Crossroads\_14, Sarshaun\_14, Itos\_14, Winky\_15, Breezona\_14, Lynnae\_14, Rumpelstiltskin\_14, Netyap\_14
- Track 9 : Bazzle\_14
- Track 10 : Underpass\_14, LilDestine\_14, Kahlid\_14, SoJulia\_14, Finemlucis\_14, Gardann\_14, Wilder\_14
- Track 11 : DanBing\_13, Baoshan\_13, Tourach\_14, DHan\_14, Claus\_14, ZhongYanYuan\_13
- Track 12 : BigCheese\_14
- Track 13 : Archie\_14
- Track 14 : GuuelaD\_14
- Track 15 : Wigglewiggles\_14
- Track 16 : Nicholasp3\_14
- Track 17 : Rossetti\_14
- Track 18 : Jubie\_15, Finnry\_15, Moostard\_15, Bellis\_15, Samty\_15
- Track 19 : Krypton555\_16, TriFive\_15, Clautastrophe\_16, Snenia\_15, Nicholas\_15, MsGreen\_15, Jobypre\_15, Kingsolomon\_15, Red305\_15, Lumos\_15
- Track 20 : Ellson\_15, KirDoubleO7\_13, BourbonZero\_14, DuncansLeg\_15, LiyuLake\_15
- Track 21 : MiniMac\_15, Lolly9\_15, MiniLon\_15
- Track 22 : Whirlwind\_16
- Track 23 : BrainDrainer\_15, Chaser\_14, Quby\_14, Douzhi\_14, Sheng711\_14, PYPDinur\_14
- Track 24 : Kropertea\_14, DyoEdafos\_15
- Track 25 : ChutneyChips\_14
- Track 26 : FarmResident\_14

- Track 27 : Douge\_14
- Track 28 : Bromden\_15
- Track 29 : Baudelaire\_14, Aegeus\_14
- Track 30 : RoseMarie\_24, KleverKiS\_24, SlimJimmy\_23, Reindeer\_22, Bricole\_24
- Track 31 : LilhomieP\_23, Izel\_25, Auspice\_24, TyDawg\_24, IPhane7\_24, Dulcita\_25, Glaske16\_25, Diminimus\_25, Skinny\_25, Bongo\_25, PegLeg\_24, FreakyGoo\_25, TpudiCK\_25
- Track 32 : Rey\_29
- Track 33 : GenevaB15\_28, Aziz\_28, MrMagoo\_28, GardenSalsa\_28
- Track 34 : Estes\_29
- Track 35 : Nanosmite\_28
- Track 36 : Cosmo\_36, Azrael100\_35
- Track 37 : EniyanLRS\_33, MaryV\_36, Wildcat\_36
- Track 38 : Kumao\_24

***Summary of Final Annotations (See graph section above for start numbers):***

The start number called the most often in the published annotations is 18, it was called in 73 of the 113 non-draft genes in the pham.

Genes that call this "Most Annotated" start:

- Acquire49\_14, Appletree2\_14, AvadaKedavra\_14, Baoshan\_13, Bazzle\_14, Bellis\_15, BobsGarage\_14, BourbonZero\_14, BrainDrainer\_15, Breezona\_14, Bromden\_15, Calm\_14, Chaser\_14, ChutneyChips\_14, CicholasNage\_14, Claus\_14, Clautastrophe\_16, Crossroads\_14, DHan\_14, DanBing\_13, DirkDirk\_14, Douge\_14, Douzhi\_14, DrSeegs\_14, DuncansLeg\_15, DyoEdafos\_15, Ellson\_15, Enceladus\_14, Faith1\_15, FarmResident\_14, Finemlucis\_14, Finnry\_15, Gabriela\_14, Gardann\_14, GuuelaD\_14, Hafay\_14, Halena\_14, Itos\_14, Jobypre\_15, JoeDirt\_14, Jubie\_15, Kahlid\_14, Kingsolomon\_15, KirDoubleO7\_13, Kropertea\_14, Krypton555\_16, LeBron\_14, Lewan\_14, LilDestine\_14, LiyuLake\_15, Loadrie\_14, Lolly9\_15, Lumos\_15, Lynnae\_14, MAckerman\_14, Miley16\_14, MiniLon\_15, MiniMac\_15, MkaliMitinis3\_14, Moostard\_15, MsGreen\_15, Netyap\_14, Nicholas\_15, OhShagHennessy\_14, OverPar\_14, PYPDinur\_14, Poochiewood\_14, Quby\_14, Red305\_15, Rose5\_14, Rossetti\_14, Rumpelstiltskin\_14, Samty\_15, Sarshaun\_14, Sheng711\_14, Silverleaf\_14, Snenia\_15, SoJulia\_14, Soap141\_14, Tourach\_14, TriFive\_15, Tyson\_14, UPIE\_14, Underpass\_14, Vetrix\_14, Wamburgrxpress\_14, Whirlwind\_16, Wigglewiggle\_14, Wilder\_14, Winky\_15, Wyatt2\_14, Zakai\_14, Zaria\_14, ZhongYanYuan\_13,

Genes that have the "Most Annotated" start but do not call it:

- Archie\_14, BigCheese\_14, Nicholasp3\_14,

Genes that do not have the "Most Annotated" start:

- Aegeus\_14, Auspice\_24, Aziz\_28, Azrael100\_35, Baudelaire\_14, Bongo\_25, Bricole\_24, Cosmo\_36, Diminimus\_25, Dulcita\_25, EniyanLRS\_33, Estes\_29, FreakyGoo\_25, GardenSalsa\_28, GenevaB15\_28, Glaske16\_25, IPhane7\_24, Izel\_25, KleverKiS\_24, Kudrefre\_22, Kumao\_24, LilJank\_23, LilhomieP\_23, MaryV\_36, MrMagoo\_28, Nanosmite\_28, Neville\_23, Octobien14\_23, PegLeg\_24, Rabbitrun\_25, Reindeer\_22, Rey\_29, RoseMarie\_24, Sephiroth\_23, Skinny\_25, SlimJimmy\_23, Syleon\_23, TpudiCK\_25, Trax\_23, TyDawg\_24, Wildcat\_36,

## Summary by start number:

### Start 7:

- Found in 8 of 138 ( 5.8% ) of genes in pham
- Manual Annotations of this start: 1 of 113
- Called 12.5% of time when present
- Phage (with cluster) where this start called: Nicholasp3\_14 (L2),

### Start 10:

- Found in 40 of 138 ( 29.0% ) of genes in pham
- Manual Annotations of this start: 1 of 113
- Called 2.5% of time when present
- Phage (with cluster) where this start called: BigCheese\_14 (L2),

### Start 13:

- Found in 29 of 138 ( 21.0% ) of genes in pham
- Manual Annotations of this start: 23 of 113
- Called 89.7% of time when present
- Phage (with cluster) where this start called: Auspice\_24 (M1), Aziz\_28 (M2), Bongo\_25 (M1), Bricole\_24 (M1), Diminimus\_25 (M1), Dulcita\_25 (M1), Estes\_29 (M2), FreakyGoo\_25 (M1), GardenSalsa\_28 (M2), GenevaB15\_28 (M2), Glaske16\_25 (M1), IPhane7\_24 (M1), Izel\_25 (M1), KleverKiS\_24 (M1), Kumao\_24 (singleton), LilhomieP\_23 (M1), MrMagoo\_28 (M2), Nanosmite\_28 (M3), PegLeg\_24 (M1), Reindeer\_22 (M1), Rey\_29 (M2), RoseMarie\_24 (M1), Skinny\_25 (M1), SlimJimmy\_23 (M1), TpudiCK\_25 (M1), TyDawg\_24 (M1),

### Start 15:

- Found in 3 of 138 ( 2.2% ) of genes in pham
- Manual Annotations of this start: 2 of 113
- Called 66.7% of time when present
- Phage (with cluster) where this start called: Aegeus\_14 (L5), Baudelaire\_14 (L5),

### Start 16:

- Found in 5 of 138 ( 3.6% ) of genes in pham
- Manual Annotations of this start: 5 of 113
- Called 100.0% of time when present
- Phage (with cluster) where this start called: Azrael100\_35 (V), Cosmo\_36 (V), EniyanLRS\_33 (V), MaryV\_36 (V), Wildcat\_36 (V),

### Start 17:

- Found in 1 of 138 ( 0.7% ) of genes in pham
- Manual Annotations of this start: 1 of 113
- Called 100.0% of time when present
- Phage (with cluster) where this start called: Archie\_14 (L2),

### Start 18:

- Found in 97 of 138 ( 70.3% ) of genes in pham
- Manual Annotations of this start: 73 of 113
- Called 96.9% of time when present
- Phage (with cluster) where this start called: Acquire49\_14 (L1), Appletree2\_14 (L1), AvadaKedavra\_14 (L1), Baoshan\_13 (L2), Bazzle\_14 (L2), Bellis\_15 (L3), BobsGarage\_14 (L2), BourbonZero\_14 (L3), BrainDrainer\_15 (L4), Breezona\_14

(L2), Bromden\_15 (L4), Calm\_14 (L1), Chaser\_14 (L4), ChutneyChips\_14 (L4), CicholasNage\_14 (L1), Claus\_14 (L2), Clautastrophe\_16 (L3), Crossroads\_14 (L2), DHan\_14 (L2), DanBing\_13 (L2), DirkDirk\_14 (L1), Douge\_14 (L4), Douzhi\_14 (L4), DrSeegs\_14 (L2), DuncansLeg\_15 (L3), DyoEdafos\_15 (L4), Ellson\_15 (L3), Enceladus\_14 (L1), Faith1\_15 (L2), FarmResident\_14 (L4), Finemlucis\_14 (L2), Finnry\_15 (L3), Gabriela\_14 (L2), Gardann\_14 (L2), GuuelaD\_14 (L2), Hafay\_14 (L2), Halena\_14 (L1), Itos\_14 (L2), Jobypre\_15 (L3), JoeDirt\_14 (L1), Jubie\_15 (L3), Kahlid\_14 (L2), Kingsolomon\_15 (L3), KirDoubleO7\_13 (L3), Kropertea\_14 (L4), Krypton555\_16 (L3), LeBron\_14 (L1), Lewan\_14 (L2), LilDestine\_14 (L2), LiyuLake\_15 (L3), Loadrie\_14 (L2), Lolly9\_15 (L3), Lumos\_15 (L3), Lynnae\_14 (L2), MAckerman\_14 (L1), Miley16\_14 (L2), MiniLon\_15 (L3), MiniMac\_15 (L3), MkaliMitinis3\_14 (L2), Moostard\_15 (L3), MsGreen\_15 (L3), Netyap\_14 (L2), Nicholas\_15 (L3), OhShagHennessy\_14 (L1), OverPar\_14 (L2), PYPDinur\_14 (L4), Poochiewood\_14 (L1), Quby\_14 (L4), Red305\_15 (L3), Rose5\_14 (L1), Rossetti\_14 (L2), Rumpelstiltskin\_14 (L2), Samty\_15 (L3), Sarshaun\_14 (L2), Sheng711\_14 (L4), Silverleaf\_14 (L1), Snenia\_15 (L3), SoJulia\_14 (L2), Soap141\_14 (L2), Tourach\_14 (L2), TriFive\_15 (L3), Tyson\_14 (L1), UPIE\_14 (L1), Underpass\_14 (L2), Vetrrix\_14 (L2), Wamburggrxpress\_14 (L1), Whirlwind\_16 (L3), Wigglewiggles\_14 (L2), Wilder\_14 (L2), Winky\_15 (L2), Wyatt2\_14 (L1), Zakai\_14 (L2), Zaria\_14 (L1), ZhongYanYuan\_13 (L2),

Start 23:

- Found in 8 of 138 ( 5.8% ) of genes in pham
- Manual Annotations of this start: 7 of 113
- Called 100.0% of time when present
- Phage (with cluster) where this start called: Kudefre\_22 (DU1), LiJank\_23 (DU2), Neville\_23 (DU2), Octobien14\_23 (DU1), Rabbitrun\_25 (DU2), Sephiroth\_23 (DU1), Syleon\_23 (DU1), Trax\_23 (DU2),

### Summary by clusters:

There are 12 clusters represented in this pham: V, L1, DU1, singleton, L4, L5, M1, L3, M3, M2, L2, DU2,

Info for manual annotations of cluster DU1:

- Start number 23 was manually annotated 4 times for cluster DU1.

Info for manual annotations of cluster DU2:

- Start number 23 was manually annotated 3 times for cluster DU2.

Info for manual annotations of cluster L1:

- Start number 18 was manually annotated 19 times for cluster L1.

Info for manual annotations of cluster L2:

- Start number 7 was manually annotated 1 time for cluster L2.
- Start number 10 was manually annotated 1 time for cluster L2.
- Start number 17 was manually annotated 1 time for cluster L2.
- Start number 18 was manually annotated 29 times for cluster L2.

Info for manual annotations of cluster L3:

- Start number 18 was manually annotated 19 times for cluster L3.

Info for manual annotations of cluster L4:

- Start number 18 was manually annotated 6 times for cluster L4.

Info for manual annotations of cluster L5:

- Start number 15 was manually annotated 2 times for cluster L5.

Info for manual annotations of cluster M1:

- Start number 13 was manually annotated 15 times for cluster M1.

Info for manual annotations of cluster M2:

- Start number 13 was manually annotated 6 times for cluster M2.

Info for manual annotations of cluster M3:

- Start number 13 was manually annotated 1 time for cluster M3.

Info for manual annotations of cluster V:

- Start number 16 was manually annotated 5 times for cluster V.

### ***Gene Information:***

Gene: Acquire49\_14 Start: 9980, Stop: 10282, Start Num: 18

Candidate Starts for Acquire49\_14:

(Start: 18 @9980 has 73 MA's), (25, 10010), (30, 10046), (31, 10052), (47, 10187), (49, 10211), (52, 10232),

Gene: Aegeus\_14 Start: 9595, Stop: 9918, Start Num: 15

Candidate Starts for Aegeus\_14:

(2, 9517), (5, 9526), (Start: 15 @9595 has 2 MA's), (22, 9628), (30, 9682), (40, 9748), (47, 9823), (50, 9853), (52, 9868),

Gene: Appletree2\_14 Start: 9954, Stop: 10256, Start Num: 18

Candidate Starts for Appletree2\_14:

(Start: 18 @9954 has 73 MA's), (25, 9984), (30, 10020), (31, 10026), (47, 10161), (49, 10185), (52, 10206),

Gene: Archie\_14 Start: 9934, Stop: 10239, Start Num: 17

Candidate Starts for Archie\_14:

(Start: 10 @9904 has 1 MA's), (11, 9907), (Start: 17 @9934 has 1 MA's), (Start: 18 @9940 has 73 MA's), (30, 10003), (31, 10009), (35, 10039), (38, 10042), (39, 10045), (47, 10144), (49, 10168), (50, 10174), (52, 10189),

Gene: Auspice\_24 Start: 13804, Stop: 14139, Start Num: 13

Candidate Starts for Auspice\_24:

(6, 13750), (Start: 13 @13804 has 23 MA's), (21, 13846), (24, 13858), (57, 14101),

Gene: AvadaKedavra\_14 Start: 9980, Stop: 10282, Start Num: 18

Candidate Starts for AvadaKedavra\_14:

(Start: 18 @9980 has 73 MA's), (25, 10010), (30, 10046), (31, 10052), (47, 10187), (49, 10211), (52, 10232),

Gene: Aziz\_28 Start: 14380, Stop: 14721, Start Num: 13

Candidate Starts for Aziz\_28:

(Start: 13 @14380 has 23 MA's), (19, 14407), (26, 14434), (28, 14449), (32, 14485), (46, 14611), (53, 14665), (54, 14668), (57, 14683),

Gene: Azrael100\_35 Start: 16947, Stop: 17291, Start Num: 16

Candidate Starts for Azrael100\_35:

(8, 16911), (12, 16929), (Start: 16 @16947 has 5 MA's), (20, 16965), (25, 16995), (27, 17010), (39, 17085), (45, 17160), (56, 17244), (57, 17253), (58, 17271),

Gene: Baoshan\_13 Start: 9819, Stop: 10118, Start Num: 18

Candidate Starts for Baoshan\_13:

(Start: 10 @9783 has 1 MA's), (11, 9786), (Start: 18 @9819 has 73 MA's), (30, 9882), (31, 9888), (33, 9903), (38, 9921), (43, 9969), (47, 10023), (50, 10053), (52, 10068),

Gene: Baudelaire\_14 Start: 9595, Stop: 9918, Start Num: 15

Candidate Starts for Baudelaire\_14:

(2, 9517), (5, 9526), (Start: 15 @9595 has 2 MA's), (22, 9628), (30, 9682), (40, 9748), (47, 9823), (50, 9853), (52, 9868),

Gene: Bazzle\_14 Start: 9944, Stop: 10243, Start Num: 18

Candidate Starts for Bazzle\_14:

(Start: 10 @9908 has 1 MA's), (11, 9911), (Start: 18 @9944 has 73 MA's), (30, 10007), (31, 10013), (38, 10046), (47, 10148), (49, 10172), (50, 10178), (52, 10193),

Gene: Bellis\_15 Start: 10120, Stop: 10395, Start Num: 18

Candidate Starts for Bellis\_15:

(Start: 18 @10120 has 73 MA's), (26, 10141), (30, 10174), (35, 10210), (41, 10252), (47, 10315), (49, 10339), (52, 10360),

Gene: BigCheese\_14 Start: 9955, Stop: 10290, Start Num: 10

Candidate Starts for BigCheese\_14:

(Start: 10 @9955 has 1 MA's), (11, 9958), (Start: 18 @9991 has 73 MA's), (30, 10054), (31, 10060), (38, 10093), (47, 10195), (50, 10225), (52, 10240),

Gene: BobsGarage\_14 Start: 9991, Stop: 10290, Start Num: 18

Candidate Starts for BobsGarage\_14:

(Start: 10 @9955 has 1 MA's), (11, 9958), (Start: 18 @9991 has 73 MA's), (30, 10054), (31, 10060), (38, 10093), (47, 10195), (50, 10225), (52, 10240),

Gene: Bongo\_25 Start: 13804, Stop: 14139, Start Num: 13

Candidate Starts for Bongo\_25:

(6, 13750), (Start: 13 @13804 has 23 MA's), (21, 13846), (24, 13858), (57, 14101),

Gene: BourbonZero\_14 Start: 10128, Stop: 10403, Start Num: 18

Candidate Starts for BourbonZero\_14:

(Start: 18 @10128 has 73 MA's), (26, 10149), (30, 10182), (41, 10260), (47, 10323), (49, 10347), (50, 10353), (52, 10368),

Gene: BrainDrainer\_15 Start: 9803, Stop: 10084, Start Num: 18

Candidate Starts for BrainDrainer\_15:

(Start: 18 @9803 has 73 MA's), (30, 9863), (31, 9869), (33, 9884), (38, 9902), (41, 9941), (47, 10004), (50, 10034), (52, 10049),

Gene: Breezona\_14 Start: 9991, Stop: 10290, Start Num: 18

Candidate Starts for Breezona\_14:

(Start: 10 @9955 has 1 MA's), (11, 9958), (Start: 18 @9991 has 73 MA's), (30, 10054), (31, 10060), (38, 10093), (47, 10195), (50, 10225), (52, 10240),

Gene: Bricole\_24 Start: 13802, Stop: 14125, Start Num: 13

Candidate Starts for Bricole\_24:

(Start: 13 @13802 has 23 MA's), (26, 13853), (57, 14087),

Gene: Bromden\_15 Start: 10127, Stop: 10408, Start Num: 18

Candidate Starts for Bromden\_15:

(Start: 18 @10127 has 73 MA's), (25, 10151), (30, 10187), (31, 10193), (35, 10223), (38, 10226), (41, 10265), (47, 10328), (50, 10358), (52, 10373),

Gene: Calm\_14 Start: 9981, Stop: 10283, Start Num: 18

Candidate Starts for Calm\_14:

(Start: 18 @9981 has 73 MA's), (25, 10011), (30, 10047), (31, 10053), (47, 10188), (49, 10212), (52, 10233),

Gene: Chaser\_14 Start: 9719, Stop: 10000, Start Num: 18

Candidate Starts for Chaser\_14:

(Start: 18 @9719 has 73 MA's), (30, 9779), (31, 9785), (33, 9800), (38, 9818), (41, 9857), (47, 9920), (50, 9950), (52, 9965),

Gene: ChutneyChips\_14 Start: 9707, Stop: 9988, Start Num: 18

Candidate Starts for ChutneyChips\_14:

(Start: 18 @9707 has 73 MA's), (30, 9767), (31, 9773), (33, 9788), (38, 9806), (41, 9845), (47, 9908), (50, 9938), (52, 9953),

Gene: CicholasNage\_14 Start: 9981, Stop: 10283, Start Num: 18

Candidate Starts for CicholasNage\_14:

(Start: 18 @9981 has 73 MA's), (25, 10011), (30, 10047), (31, 10053), (47, 10188), (49, 10212), (52, 10233),

Gene: Claus\_14 Start: 9999, Stop: 10298, Start Num: 18

Candidate Starts for Claus\_14:

(Start: 10 @9963 has 1 MA's), (11, 9966), (Start: 18 @9999 has 73 MA's), (30, 10062), (31, 10068), (33, 10083), (38, 10101), (43, 10149), (47, 10203), (50, 10233), (52, 10248),

Gene: Clautastrophe\_16 Start: 10124, Stop: 10399, Start Num: 18

Candidate Starts for Clautastrophe\_16:

(Start: 18 @10124 has 73 MA's), (26, 10145), (30, 10178), (41, 10256), (47, 10319), (49, 10343), (52, 10364),

Gene: Cosmo\_36 Start: 16954, Stop: 17298, Start Num: 16

Candidate Starts for Cosmo\_36:

(8, 16918), (12, 16936), (Start: 16 @16954 has 5 MA's), (20, 16972), (25, 17002), (27, 17017), (39, 17092), (45, 17167), (56, 17251), (57, 17260), (58, 17278),

Gene: Crossroads\_14 Start: 9991, Stop: 10290, Start Num: 18

Candidate Starts for Crossroads\_14:

(Start: 10 @9955 has 1 MA's), (11, 9958), (Start: 18 @9991 has 73 MA's), (30, 10054), (31, 10060), (38, 10093), (47, 10195), (50, 10225), (52, 10240),

Gene: DHan\_14 Start: 9935, Stop: 10234, Start Num: 18

Candidate Starts for DHan\_14:

(Start: 10 @9899 has 1 MA's), (11, 9902), (Start: 18 @9935 has 73 MA's), (30, 9998), (31, 10004), (33, 10019), (38, 10037), (43, 10085), (47, 10139), (50, 10169), (52, 10184),

Gene: DanBing\_13 Start: 9818, Stop: 10117, Start Num: 18

Candidate Starts for DanBing\_13:

(Start: 10 @9782 has 1 MA's), (11, 9785), (Start: 18 @9818 has 73 MA's), (30, 9881), (31, 9887), (33, 9902), (38, 9920), (43, 9968), (47, 10022), (50, 10052), (52, 10067),

Gene: Diminimus\_25 Start: 13803, Stop: 14138, Start Num: 13

Candidate Starts for Diminimus\_25:

(6, 13749), (Start: 13 @13803 has 23 MA's), (21, 13845), (24, 13857), (57, 14100),

Gene: DirkDirk\_14 Start: 9982, Stop: 10284, Start Num: 18

Candidate Starts for DirkDirk\_14:

(Start: 18 @9982 has 73 MA's), (25, 10012), (30, 10048), (31, 10054), (47, 10189), (49, 10213), (52, 10234),

Gene: Douge\_14 Start: 9664, Stop: 9945, Start Num: 18

Candidate Starts for Douge\_14:

(Start: 18 @9664 has 73 MA's), (29, 9712), (30, 9724), (31, 9730), (33, 9745), (38, 9763), (41, 9802), (47, 9865), (50, 9895), (52, 9910),

Gene: Douzhi\_14 Start: 9664, Stop: 9945, Start Num: 18

Candidate Starts for Douzhi\_14:

(Start: 18 @9664 has 73 MA's), (30, 9724), (31, 9730), (33, 9745), (38, 9763), (41, 9802), (47, 9865), (50, 9895), (52, 9910),

Gene: DrSeegs\_14 Start: 9991, Stop: 10290, Start Num: 18

Candidate Starts for DrSeegs\_14:

(Start: 10 @9955 has 1 MA's), (11, 9958), (Start: 18 @9991 has 73 MA's), (30, 10054), (31, 10060), (38, 10093), (47, 10195), (50, 10225), (52, 10240),

Gene: Dulcita\_25 Start: 13803, Stop: 14138, Start Num: 13

Candidate Starts for Dulcita\_25:

(6, 13749), (Start: 13 @13803 has 23 MA's), (21, 13845), (24, 13857), (57, 14100),

Gene: DuncansLeg\_15 Start: 10130, Stop: 10405, Start Num: 18

Candidate Starts for DuncansLeg\_15:

(Start: 18 @10130 has 73 MA's), (26, 10151), (30, 10184), (41, 10262), (47, 10325), (49, 10349), (50, 10355), (52, 10370),

Gene: DyoEdafos\_15 Start: 9877, Stop: 10158, Start Num: 18

Candidate Starts for DyoEdafos\_15:

(Start: 18 @9877 has 73 MA's), (30, 9937), (31, 9943), (33, 9958), (38, 9976), (41, 10015), (47, 10078), (50, 10108), (52, 10123),

Gene: Ellson\_15 Start: 10138, Stop: 10413, Start Num: 18

Candidate Starts for Ellson\_15:

(Start: 18 @10138 has 73 MA's), (26, 10159), (30, 10192), (41, 10270), (47, 10333), (49, 10357), (50, 10363), (52, 10378),

Gene: Enceladus\_14 Start: 9983, Stop: 10285, Start Num: 18  
Candidate Starts for Enceladus\_14:  
(Start: 18 @9983 has 73 MA's), (25, 10013), (30, 10049), (31, 10055), (47, 10190), (49, 10214), (52, 10235),

Gene: EniyanLRS\_33 Start: 16652, Stop: 16996, Start Num: 16  
Candidate Starts for EniyanLRS\_33:  
(Start: 16 @16652 has 5 MA's), (20, 16670), (25, 16700), (27, 16715), (39, 16790), (45, 16865), (56, 16949), (57, 16958), (58, 16976),

Gene: Estes\_29 Start: 14517, Stop: 14858, Start Num: 13  
Candidate Starts for Estes\_29:  
(Start: 13 @14517 has 23 MA's), (26, 14571), (28, 14586), (32, 14622), (46, 14748), (53, 14802), (54, 14805), (57, 14820),

Gene: Faith1\_15 Start: 9991, Stop: 10290, Start Num: 18  
Candidate Starts for Faith1\_15:  
(Start: 10 @9955 has 1 MA's), (11, 9958), (Start: 18 @9991 has 73 MA's), (30, 10054), (31, 10060), (38, 10093), (47, 10195), (50, 10225), (52, 10240),

Gene: FarmResident\_14 Start: 9708, Stop: 9989, Start Num: 18  
Candidate Starts for FarmResident\_14:  
(Start: 18 @9708 has 73 MA's), (30, 9768), (31, 9774), (33, 9789), (38, 9807), (41, 9846), (47, 9909), (50, 9939), (52, 9954),

Gene: Finemlucis\_14 Start: 9991, Stop: 10290, Start Num: 18  
Candidate Starts for Finemlucis\_14:  
(Start: 7 @9934 has 1 MA's), (Start: 10 @9955 has 1 MA's), (11, 9958), (Start: 18 @9991 has 73 MA's), (30, 10054), (31, 10060), (38, 10093), (47, 10195), (50, 10225), (52, 10240),

Gene: Finnry\_15 Start: 10122, Stop: 10397, Start Num: 18  
Candidate Starts for Finnry\_15:  
(Start: 18 @10122 has 73 MA's), (26, 10143), (30, 10176), (35, 10212), (41, 10254), (47, 10317), (49, 10341), (52, 10362),

Gene: FreakyGoo\_25 Start: 13804, Stop: 14139, Start Num: 13  
Candidate Starts for FreakyGoo\_25:  
(6, 13750), (Start: 13 @13804 has 23 MA's), (21, 13846), (24, 13858), (57, 14101),

Gene: Gabriela\_14 Start: 9991, Stop: 10290, Start Num: 18  
Candidate Starts for Gabriela\_14:  
(Start: 10 @9955 has 1 MA's), (11, 9958), (Start: 18 @9991 has 73 MA's), (30, 10054), (31, 10060), (38, 10093), (47, 10195), (50, 10225), (52, 10240),

Gene: Gardann\_14 Start: 9990, Stop: 10289, Start Num: 18  
Candidate Starts for Gardann\_14:  
(Start: 7 @9933 has 1 MA's), (Start: 10 @9954 has 1 MA's), (11, 9957), (Start: 18 @9990 has 73 MA's), (30, 10053), (31, 10059), (38, 10092), (47, 10194), (50, 10224), (52, 10239),

Gene: GardenSalsa\_28 Start: 14353, Stop: 14694, Start Num: 13  
Candidate Starts for GardenSalsa\_28:  
(Start: 13 @14353 has 23 MA's), (19, 14380), (26, 14407), (28, 14422), (32, 14458), (46, 14584), (53, 14638), (54, 14641), (57, 14656),

Gene: GenevaB15\_28 Start: 14380, Stop: 14721, Start Num: 13

Candidate Starts for GenevaB15\_28:

(Start: 13 @14380 has 23 MA's), (19, 14407), (26, 14434), (28, 14449), (32, 14485), (46, 14611), (53, 14665), (54, 14668), (57, 14683),

Gene: Glaske16\_25 Start: 13803, Stop: 14138, Start Num: 13

Candidate Starts for Glaske16\_25:

(6, 13749), (Start: 13 @13803 has 23 MA's), (21, 13845), (24, 13857), (57, 14100),

Gene: GuuelaD\_14 Start: 10025, Stop: 10324, Start Num: 18

Candidate Starts for GuuelaD\_14:

(Start: 18 @10025 has 73 MA's), (26, 10055), (30, 10088), (31, 10094), (38, 10127), (47, 10229), (50, 10259), (52, 10274),

Gene: Hafay\_14 Start: 10024, Stop: 10323, Start Num: 18

Candidate Starts for Hafay\_14:

(Start: 10 @9988 has 1 MA's), (11, 9991), (Start: 18 @10024 has 73 MA's), (30, 10087), (31, 10093), (38, 10126), (47, 10228), (50, 10258), (52, 10273),

Gene: Halena\_14 Start: 9981, Stop: 10283, Start Num: 18

Candidate Starts for Halena\_14:

(Start: 18 @9981 has 73 MA's), (25, 10011), (30, 10047), (31, 10053), (47, 10188), (49, 10212), (52, 10233),

Gene: IPhane7\_24 Start: 13804, Stop: 14139, Start Num: 13

Candidate Starts for IPhane7\_24:

(6, 13750), (Start: 13 @13804 has 23 MA's), (21, 13846), (24, 13858), (57, 14101),

Gene: Itos\_14 Start: 9991, Stop: 10290, Start Num: 18

Candidate Starts for Itos\_14:

(Start: 10 @9955 has 1 MA's), (11, 9958), (Start: 18 @9991 has 73 MA's), (30, 10054), (31, 10060), (38, 10093), (47, 10195), (50, 10225), (52, 10240),

Gene: Izel\_25 Start: 13803, Stop: 14138, Start Num: 13

Candidate Starts for Izel\_25:

(6, 13749), (Start: 13 @13803 has 23 MA's), (21, 13845), (24, 13857), (57, 14100),

Gene: Jobypre\_15 Start: 10124, Stop: 10399, Start Num: 18

Candidate Starts for Jobypre\_15:

(Start: 18 @10124 has 73 MA's), (26, 10145), (30, 10178), (41, 10256), (47, 10319), (49, 10343), (52, 10364),

Gene: JoeDirt\_14 Start: 9981, Stop: 10283, Start Num: 18

Candidate Starts for JoeDirt\_14:

(Start: 18 @9981 has 73 MA's), (25, 10011), (30, 10047), (31, 10053), (47, 10188), (49, 10212), (52, 10233),

Gene: Jubie\_15 Start: 10125, Stop: 10400, Start Num: 18

Candidate Starts for Jubie\_15:

(Start: 18 @10125 has 73 MA's), (26, 10146), (30, 10179), (35, 10215), (41, 10257), (47, 10320), (49, 10344), (52, 10365),

Gene: Kahlid\_14 Start: 9990, Stop: 10289, Start Num: 18

Candidate Starts for Kahlid\_14:

(Start: 7 @9933 has 1 MA's), (Start: 10 @9954 has 1 MA's), (11, 9957), (Start: 18 @9990 has 73 MA's), (30, 10053), (31, 10059), (38, 10092), (47, 10194), (50, 10224), (52, 10239),

Gene: Kingsolomon\_15 Start: 10124, Stop: 10399, Start Num: 18

Candidate Starts for Kingsolomon\_15:

(Start: 18 @10124 has 73 MA's), (26, 10145), (30, 10178), (41, 10256), (47, 10319), (49, 10343), (52, 10364),

Gene: KirDoubleO7\_13 Start: 10139, Stop: 10414, Start Num: 18

Candidate Starts for KirDoubleO7\_13:

(Start: 18 @10139 has 73 MA's), (26, 10160), (30, 10193), (41, 10271), (47, 10334), (49, 10358), (50, 10364), (52, 10379),

Gene: KleverKiS\_24 Start: 13799, Stop: 14122, Start Num: 13

Candidate Starts for KleverKiS\_24:

(Start: 13 @13799 has 23 MA's), (26, 13850), (57, 14084),

Gene: Kropertea\_14 Start: 9683, Stop: 9964, Start Num: 18

Candidate Starts for Kropertea\_14:

(Start: 18 @9683 has 73 MA's), (30, 9743), (31, 9749), (33, 9764), (38, 9782), (41, 9821), (47, 9884), (50, 9914), (52, 9929),

Gene: Krypton555\_16 Start: 10113, Stop: 10388, Start Num: 18

Candidate Starts for Krypton555\_16:

(Start: 18 @10113 has 73 MA's), (26, 10134), (30, 10167), (41, 10245), (47, 10308), (49, 10332), (52, 10353),

Gene: Kudfre\_22 Start: 13087, Stop: 13377, Start Num: 23

Candidate Starts for Kudfre\_22:

(Start: 23 @13087 has 7 MA's), (34, 13156), (40, 13198), (48, 13279), (50, 13303), (51, 13309), (52, 13318),

Gene: Kumao\_24 Start: 13644, Stop: 13994, Start Num: 13

Candidate Starts for Kumao\_24:

(1, 13566), (3, 13581), (Start: 13 @13644 has 23 MA's), (26, 13710), (27, 13731), (38, 13788), (40, 13815), (50, 13920), (53, 13938), (57, 13956), (58, 13974),

Gene: LeBron\_14 Start: 9981, Stop: 10283, Start Num: 18

Candidate Starts for LeBron\_14:

(Start: 18 @9981 has 73 MA's), (25, 10011), (30, 10047), (31, 10053), (47, 10188), (49, 10212), (52, 10233),

Gene: Lewan\_14 Start: 9991, Stop: 10290, Start Num: 18

Candidate Starts for Lewan\_14:

(Start: 10 @9955 has 1 MA's), (11, 9958), (Start: 18 @9991 has 73 MA's), (30, 10054), (31, 10060), (38, 10093), (47, 10195), (50, 10225), (52, 10240),

Gene: LilDestine\_14 Start: 9990, Stop: 10289, Start Num: 18

Candidate Starts for LilDestine\_14:

(Start: 7 @9933 has 1 MA's), (Start: 10 @9954 has 1 MA's), (11, 9957), (Start: 18 @9990 has 73 MA's), (30, 10053), (31, 10059), (38, 10092), (47, 10194), (50, 10224), (52, 10239),

Gene: LilJank\_23 Start: 14699, Stop: 14998, Start Num: 23

Candidate Starts for LilJank\_23:

(9, 14645), (Start: 13 @14666 has 23 MA's), (Start: 23 @14699 has 7 MA's), (40, 14816), (44, 14864), (50, 14924),

Gene: LilhomieP\_23 Start: 13804, Stop: 14139, Start Num: 13

Candidate Starts for LilhomieP\_23:

(6, 13750), (Start: 13 @13804 has 23 MA's), (21, 13846), (24, 13858), (57, 14101),

Gene: LiyuLake\_15 Start: 10130, Stop: 10405, Start Num: 18

Candidate Starts for LiyuLake\_15:

(Start: 18 @10130 has 73 MA's), (26, 10151), (30, 10184), (41, 10262), (47, 10325), (49, 10349), (50, 10355), (52, 10370),

Gene: Loadrie\_14 Start: 10023, Stop: 10322, Start Num: 18

Candidate Starts for Loadrie\_14:

(Start: 10 @9987 has 1 MA's), (11, 9990), (Start: 18 @10023 has 73 MA's), (30, 10086), (31, 10092), (38, 10125), (47, 10227), (50, 10257), (52, 10272),

Gene: Lolly9\_15 Start: 10131, Stop: 10406, Start Num: 18

Candidate Starts for Lolly9\_15:

(Start: 18 @10131 has 73 MA's), (26, 10152), (30, 10185), (41, 10263), (47, 10326), (49, 10350), (52, 10371),

Gene: Lumos\_15 Start: 10124, Stop: 10399, Start Num: 18

Candidate Starts for Lumos\_15:

(Start: 18 @10124 has 73 MA's), (26, 10145), (30, 10178), (41, 10256), (47, 10319), (49, 10343), (52, 10364),

Gene: Lynnae\_14 Start: 9991, Stop: 10290, Start Num: 18

Candidate Starts for Lynnae\_14:

(Start: 10 @9955 has 1 MA's), (11, 9958), (Start: 18 @9991 has 73 MA's), (30, 10054), (31, 10060), (38, 10093), (47, 10195), (50, 10225), (52, 10240),

Gene: MAckerman\_14 Start: 9980, Stop: 10282, Start Num: 18

Candidate Starts for MAckerman\_14:

(Start: 18 @9980 has 73 MA's), (25, 10010), (30, 10046), (31, 10052), (47, 10187), (49, 10211), (52, 10232),

Gene: MaryV\_36 Start: 16924, Stop: 17268, Start Num: 16

Candidate Starts for MaryV\_36:

(Start: 16 @16924 has 5 MA's), (20, 16942), (25, 16972), (27, 16987), (39, 17062), (45, 17137), (56, 17221), (57, 17230), (58, 17248),

Gene: Miley16\_14 Start: 9991, Stop: 10290, Start Num: 18

Candidate Starts for Miley16\_14:

(Start: 10 @9955 has 1 MA's), (11, 9958), (Start: 18 @9991 has 73 MA's), (30, 10054), (31, 10060), (38, 10093), (47, 10195), (50, 10225), (52, 10240),

Gene: MiniLon\_15 Start: 10131, Stop: 10406, Start Num: 18

Candidate Starts for MiniLon\_15:

(Start: 18 @10131 has 73 MA's), (26, 10152), (30, 10185), (41, 10263), (47, 10326), (49, 10350), (52, 10371),

Gene: MiniMac\_15 Start: 10132, Stop: 10407, Start Num: 18

Candidate Starts for MiniMac\_15:

(Start: 18 @10132 has 73 MA's), (26, 10153), (30, 10186), (41, 10264), (47, 10327), (49, 10351), (52, 10372),

Gene: MkaliMitinis3\_14 Start: 9991, Stop: 10290, Start Num: 18

Candidate Starts for MkaliMitinis3\_14:

(Start: 10 @9955 has 1 MA's), (11, 9958), (Start: 18 @9991 has 73 MA's), (30, 10054), (31, 10060), (38, 10093), (47, 10195), (50, 10225), (52, 10240),

Gene: Moostard\_15 Start: 10121, Stop: 10396, Start Num: 18

Candidate Starts for Moostard\_15:

(Start: 18 @10121 has 73 MA's), (26, 10142), (30, 10175), (35, 10211), (41, 10253), (47, 10316), (49, 10340), (52, 10361),

Gene: MrMagoo\_28 Start: 14353, Stop: 14694, Start Num: 13

Candidate Starts for MrMagoo\_28:

(Start: 13 @14353 has 23 MA's), (19, 14380), (26, 14407), (28, 14422), (32, 14458), (46, 14584), (53, 14638), (54, 14641), (57, 14656),

Gene: MsGreen\_15 Start: 10124, Stop: 10399, Start Num: 18

Candidate Starts for MsGreen\_15:

(Start: 18 @10124 has 73 MA's), (26, 10145), (30, 10178), (41, 10256), (47, 10319), (49, 10343), (52, 10364),

Gene: Nanosmite\_28 Start: 14576, Stop: 14908, Start Num: 13

Candidate Starts for Nanosmite\_28:

(6, 14522), (Start: 13 @14576 has 23 MA's), (57, 14870),

Gene: Netyap\_14 Start: 9991, Stop: 10290, Start Num: 18

Candidate Starts for Netyap\_14:

(Start: 10 @9955 has 1 MA's), (11, 9958), (Start: 18 @9991 has 73 MA's), (30, 10054), (31, 10060), (38, 10093), (47, 10195), (50, 10225), (52, 10240),

Gene: Neville\_23 Start: 14339, Stop: 14638, Start Num: 23

Candidate Starts for Neville\_23:

(Start: 23 @14339 has 7 MA's), (40, 14456), (44, 14504), (50, 14564),

Gene: Nicholas\_15 Start: 10124, Stop: 10399, Start Num: 18

Candidate Starts for Nicholas\_15:

(Start: 18 @10124 has 73 MA's), (26, 10145), (30, 10178), (41, 10256), (47, 10319), (49, 10343), (52, 10364),

Gene: Nicholasp3\_14 Start: 9933, Stop: 10289, Start Num: 7

Candidate Starts for Nicholasp3\_14:

(Start: 7 @9933 has 1 MA's), (Start: 10 @9954 has 1 MA's), (11, 9957), (Start: 18 @9990 has 73 MA's), (30, 10053), (31, 10059), (38, 10092), (47, 10194), (50, 10224), (52, 10239),

Gene: Octobien14\_23 Start: 14131, Stop: 14436, Start Num: 23

Candidate Starts for Octobien14\_23:

(Start: 23 @14131 has 7 MA's), (27, 14167), (40, 14257), (42, 14272), (48, 14338), (50, 14362), (51, 14368), (52, 14377),

Gene: OhShagHennessy\_14 Start: 9954, Stop: 10256, Start Num: 18

Candidate Starts for OhShagHennessy\_14:

(Start: 18 @9954 has 73 MA's), (25, 9984), (30, 10020), (31, 10026), (47, 10161), (49, 10185), (52, 10206),

Gene: OverPar\_14 Start: 10023, Stop: 10322, Start Num: 18

Candidate Starts for OverPar\_14:

(Start: 10 @9987 has 1 MA's), (11, 9990), (Start: 18 @10023 has 73 MA's), (30, 10086), (31, 10092), (38, 10125), (47, 10227), (50, 10257), (52, 10272),

Gene: PYPDinur\_14 Start: 9664, Stop: 9945, Start Num: 18

Candidate Starts for PYPDinur\_14:

(Start: 18 @9664 has 73 MA's), (30, 9724), (31, 9730), (33, 9745), (38, 9763), (41, 9802), (47, 9865), (50, 9895), (52, 9910),

Gene: PegLeg\_24 Start: 13803, Stop: 14138, Start Num: 13

Candidate Starts for PegLeg\_24:

(6, 13749), (Start: 13 @13803 has 23 MA's), (21, 13845), (24, 13857), (57, 14100),

Gene: Poochiewood\_14 Start: 9980, Stop: 10282, Start Num: 18

Candidate Starts for Poochiewood\_14:

(Start: 18 @9980 has 73 MA's), (25, 10010), (30, 10046), (31, 10052), (47, 10187), (49, 10211), (52, 10232),

Gene: Quby\_14 Start: 9663, Stop: 9944, Start Num: 18

Candidate Starts for Quby\_14:

(Start: 18 @9663 has 73 MA's), (30, 9723), (31, 9729), (33, 9744), (38, 9762), (41, 9801), (47, 9864), (50, 9894), (52, 9909),

Gene: Rabbitrun\_25 Start: 14785, Stop: 15084, Start Num: 23

Candidate Starts for Rabbitrun\_25:

(4, 14689), (Start: 23 @14785 has 7 MA's), (40, 14902), (50, 15010), (55, 15034),

Gene: Red305\_15 Start: 10124, Stop: 10399, Start Num: 18

Candidate Starts for Red305\_15:

(Start: 18 @10124 has 73 MA's), (26, 10145), (30, 10178), (41, 10256), (47, 10319), (49, 10343), (52, 10364),

Gene: Reindeer\_22 Start: 13656, Stop: 13979, Start Num: 13

Candidate Starts for Reindeer\_22:

(Start: 13 @13656 has 23 MA's), (26, 13707), (57, 13941),

Gene: Rey\_29 Start: 14582, Stop: 14929, Start Num: 13

Candidate Starts for Rey\_29:

(Start: 13 @14582 has 23 MA's), (26, 14642), (36, 14717), (37, 14720), (53, 14873), (54, 14876), (57, 14891),

Gene: Rose5\_14 Start: 9980, Stop: 10282, Start Num: 18

Candidate Starts for Rose5\_14:

(Start: 18 @9980 has 73 MA's), (25, 10010), (30, 10046), (31, 10052), (47, 10187), (49, 10211), (52, 10232),

Gene: RoseMarie\_24 Start: 14045, Stop: 14368, Start Num: 13

Candidate Starts for RoseMarie\_24:

(Start: 13 @14045 has 23 MA's), (26, 14096), (57, 14330),

Gene: Rossetti\_14 Start: 9990, Stop: 10289, Start Num: 18

Candidate Starts for Rossetti\_14:

(Start: 10 @9954 has 1 MA's), (11, 9957), (14, 9981), (Start: 18 @9990 has 73 MA's), (30, 10053), (31, 10059), (33, 10074), (38, 10092), (43, 10140), (47, 10194), (50, 10224), (52, 10239),

Gene: Rumpelstiltskin\_14 Start: 9991, Stop: 10290, Start Num: 18

Candidate Starts for Rumpelstiltskin\_14:

(Start: 10 @9955 has 1 MA's), (11, 9958), (Start: 18 @9991 has 73 MA's), (30, 10054), (31, 10060), (38, 10093), (47, 10195), (50, 10225), (52, 10240),

Gene: Samty\_15 Start: 10121, Stop: 10396, Start Num: 18

Candidate Starts for Samty\_15:

(Start: 18 @10121 has 73 MA's), (26, 10142), (30, 10175), (35, 10211), (41, 10253), (47, 10316), (49, 10340), (52, 10361),

Gene: Sarshaun\_14 Start: 10024, Stop: 10323, Start Num: 18

Candidate Starts for Sarshaun\_14:

(Start: 10 @9988 has 1 MA's), (11, 9991), (Start: 18 @10024 has 73 MA's), (30, 10087), (31, 10093), (38, 10126), (47, 10228), (50, 10258), (52, 10273),

Gene: Sephiroth\_23 Start: 13258, Stop: 13548, Start Num: 23

Candidate Starts for Sephiroth\_23:

(Start: 23 @13258 has 7 MA's), (34, 13327), (40, 13369), (48, 13450), (50, 13474), (51, 13480), (52, 13489),

Gene: Sheng711\_14 Start: 9664, Stop: 9945, Start Num: 18

Candidate Starts for Sheng711\_14:

(Start: 18 @9664 has 73 MA's), (30, 9724), (31, 9730), (33, 9745), (38, 9763), (41, 9802), (47, 9865), (50, 9895), (52, 9910),

Gene: Silverleaf\_14 Start: 9980, Stop: 10282, Start Num: 18

Candidate Starts for Silverleaf\_14:

(Start: 18 @9980 has 73 MA's), (25, 10010), (30, 10046), (31, 10052), (47, 10187), (49, 10211), (52, 10232),

Gene: Skinny\_25 Start: 13804, Stop: 14139, Start Num: 13

Candidate Starts for Skinny\_25:

(6, 13750), (Start: 13 @13804 has 23 MA's), (21, 13846), (24, 13858), (57, 14101),

Gene: SlimJimmy\_23 Start: 13802, Stop: 14125, Start Num: 13

Candidate Starts for SlimJimmy\_23:

(Start: 13 @13802 has 23 MA's), (26, 13853), (57, 14087),

Gene: Snenia\_15 Start: 10125, Stop: 10400, Start Num: 18

Candidate Starts for Snenia\_15:

(Start: 18 @10125 has 73 MA's), (26, 10146), (30, 10179), (41, 10257), (47, 10320), (49, 10344), (52, 10365),

Gene: SoJulia\_14 Start: 9990, Stop: 10289, Start Num: 18

Candidate Starts for SoJulia\_14:

(Start: 7 @9933 has 1 MA's), (Start: 10 @9954 has 1 MA's), (11, 9957), (Start: 18 @9990 has 73 MA's), (30, 10053), (31, 10059), (38, 10092), (47, 10194), (50, 10224), (52, 10239),

Gene: Soap141\_14 Start: 10024, Stop: 10323, Start Num: 18

Candidate Starts for Soap141\_14:

(Start: 10 @9988 has 1 MA's), (11, 9991), (Start: 18 @10024 has 73 MA's), (30, 10087), (31, 10093), (38, 10126), (47, 10228), (50, 10258), (52, 10273),

Gene: Syleon\_23 Start: 13180, Stop: 13470, Start Num: 23

Candidate Starts for Syleon\_23:

(Start: 13 @13132 has 23 MA's), (Start: 15 @13144 has 2 MA's), (Start: 23 @13180 has 7 MA's), (34, 13249), (40, 13291), (48, 13372), (50, 13396), (51, 13402), (52, 13411),

Gene: Tourach\_14 Start: 10006, Stop: 10305, Start Num: 18

Candidate Starts for Tourach\_14:

(Start: 10 @9970 has 1 MA's), (11, 9973), (Start: 18 @10006 has 73 MA's), (30, 10069), (31, 10075), (33, 10090), (38, 10108), (43, 10156), (47, 10210), (50, 10240), (52, 10255),

Gene: TpudiCK\_25 Start: 13803, Stop: 14138, Start Num: 13

Candidate Starts for TpudiCK\_25:

(6, 13749), (Start: 13 @13803 has 23 MA's), (21, 13845), (24, 13857), (57, 14100),

Gene: Trax\_23 Start: 14648, Stop: 14947, Start Num: 23

Candidate Starts for Trax\_23:

(9, 14594), (Start: 13 @14615 has 23 MA's), (Start: 23 @14648 has 7 MA's), (40, 14765), (44, 14813), (50, 14873),

Gene: TriFive\_15 Start: 10124, Stop: 10399, Start Num: 18

Candidate Starts for TriFive\_15:

(Start: 18 @10124 has 73 MA's), (26, 10145), (30, 10178), (41, 10256), (47, 10319), (49, 10343), (52, 10364),

Gene: TyDawg\_24 Start: 13804, Stop: 14139, Start Num: 13

Candidate Starts for TyDawg\_24:

(6, 13750), (Start: 13 @13804 has 23 MA's), (21, 13846), (24, 13858), (57, 14101),

Gene: Tyson\_14 Start: 9980, Stop: 10282, Start Num: 18

Candidate Starts for Tyson\_14:

(Start: 18 @9980 has 73 MA's), (25, 10010), (30, 10046), (31, 10052), (47, 10187), (49, 10211), (52, 10232),

Gene: UPIE\_14 Start: 9978, Stop: 10280, Start Num: 18

Candidate Starts for UPIE\_14:

(Start: 18 @9978 has 73 MA's), (25, 10008), (30, 10044), (31, 10050), (47, 10185), (49, 10209), (52, 10230),

Gene: Underpass\_14 Start: 9990, Stop: 10289, Start Num: 18

Candidate Starts for Underpass\_14:

(Start: 7 @9933 has 1 MA's), (Start: 10 @9954 has 1 MA's), (11, 9957), (Start: 18 @9990 has 73 MA's), (30, 10053), (31, 10059), (38, 10092), (47, 10194), (50, 10224), (52, 10239),

Gene: Vetrix\_14 Start: 9991, Stop: 10290, Start Num: 18

Candidate Starts for Vetrix\_14:

(Start: 10 @9955 has 1 MA's), (11, 9958), (Start: 18 @9991 has 73 MA's), (30, 10054), (31, 10060), (38, 10093), (47, 10195), (50, 10225), (52, 10240),

Gene: Wamburgrxpress\_14 Start: 9980, Stop: 10282, Start Num: 18

Candidate Starts for Wamburgrxpress\_14:

(Start: 18 @9980 has 73 MA's), (25, 10010), (30, 10046), (31, 10052), (47, 10187), (49, 10211), (52, 10232),

Gene: Whirlwind\_16 Start: 10118, Stop: 10393, Start Num: 18

Candidate Starts for Whirlwind\_16:

(Start: 18 @10118 has 73 MA's), (26, 10139), (27, 10148), (30, 10172), (41, 10250), (47, 10313), (49, 10337), (52, 10358),

Gene: Wigglewobble\_14 Start: 10023, Stop: 10322, Start Num: 18

Candidate Starts for Wigglewobble\_14:

(Start: 10 @9987 has 1 MA's), (11, 9990), (14, 10014), (Start: 18 @10023 has 73 MA's), (30, 10086), (31, 10092), (38, 10125), (47, 10227), (50, 10257), (52, 10272),

Gene: Wildcat\_36 Start: 16934, Stop: 17278, Start Num: 16

Candidate Starts for Wildcat\_36:

(Start: 16 @16934 has 5 MA's), (20, 16952), (25, 16982), (27, 16997), (39, 17072), (45, 17147), (56, 17231), (57, 17240), (58, 17258),

Gene: Wilder\_14 Start: 9990, Stop: 10289, Start Num: 18

Candidate Starts for Wilder\_14:

(Start: 7 @9933 has 1 MA's), (Start: 10 @9954 has 1 MA's), (11, 9957), (Start: 18 @9990 has 73 MA's), (30, 10053), (31, 10059), (38, 10092), (47, 10194), (50, 10224), (52, 10239),

Gene: Winky\_15 Start: 9991, Stop: 10290, Start Num: 18

Candidate Starts for Winky\_15:

(Start: 10 @9955 has 1 MA's), (11, 9958), (Start: 18 @9991 has 73 MA's), (30, 10054), (31, 10060), (38, 10093), (47, 10195), (50, 10225), (52, 10240),

Gene: Wyatt2\_14 Start: 9980, Stop: 10282, Start Num: 18

Candidate Starts for Wyatt2\_14:

(Start: 18 @9980 has 73 MA's), (25, 10010), (30, 10046), (31, 10052), (47, 10187), (49, 10211), (52, 10232),

Gene: Zakai\_14 Start: 9979, Stop: 10278, Start Num: 18

Candidate Starts for Zakai\_14:

(Start: 10 @9943 has 1 MA's), (11, 9946), (Start: 18 @9979 has 73 MA's), (30, 10042), (31, 10048), (38, 10081), (47, 10183), (50, 10213), (52, 10228),

Gene: Zaria\_14 Start: 9981, Stop: 10283, Start Num: 18

Candidate Starts for Zaria\_14:

(Start: 18 @9981 has 73 MA's), (25, 10011), (30, 10047), (31, 10053), (47, 10188), (49, 10212), (52, 10233),

Gene: ZhongYanYuan\_13 Start: 9819, Stop: 10118, Start Num: 18

Candidate Starts for ZhongYanYuan\_13:

(Start: 10 @9783 has 1 MA's), (11, 9786), (Start: 18 @9819 has 73 MA's), (30, 9882), (31, 9888), (33, 9903), (38, 9921), (43, 9969), (47, 10023), (50, 10053), (52, 10068),