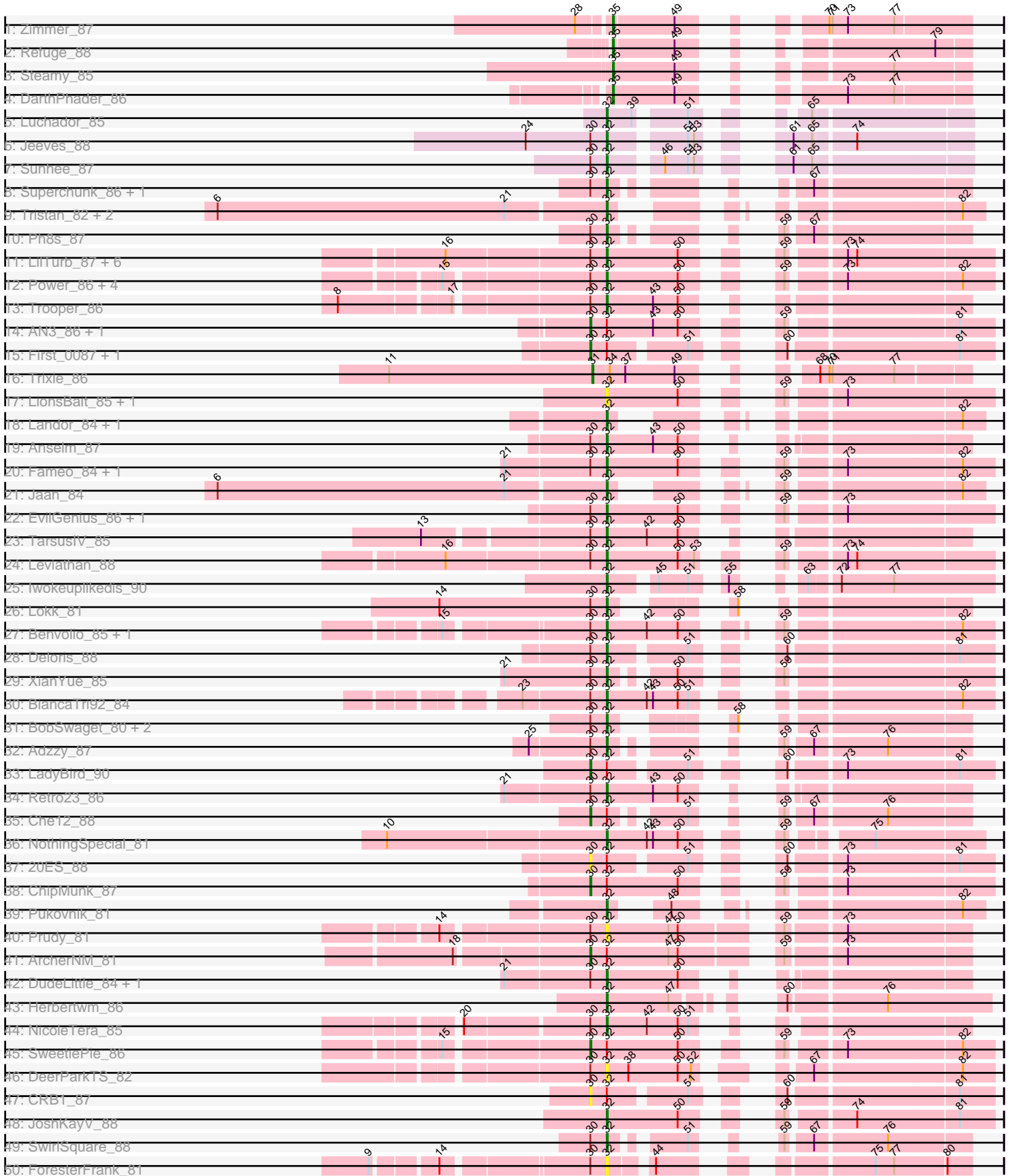
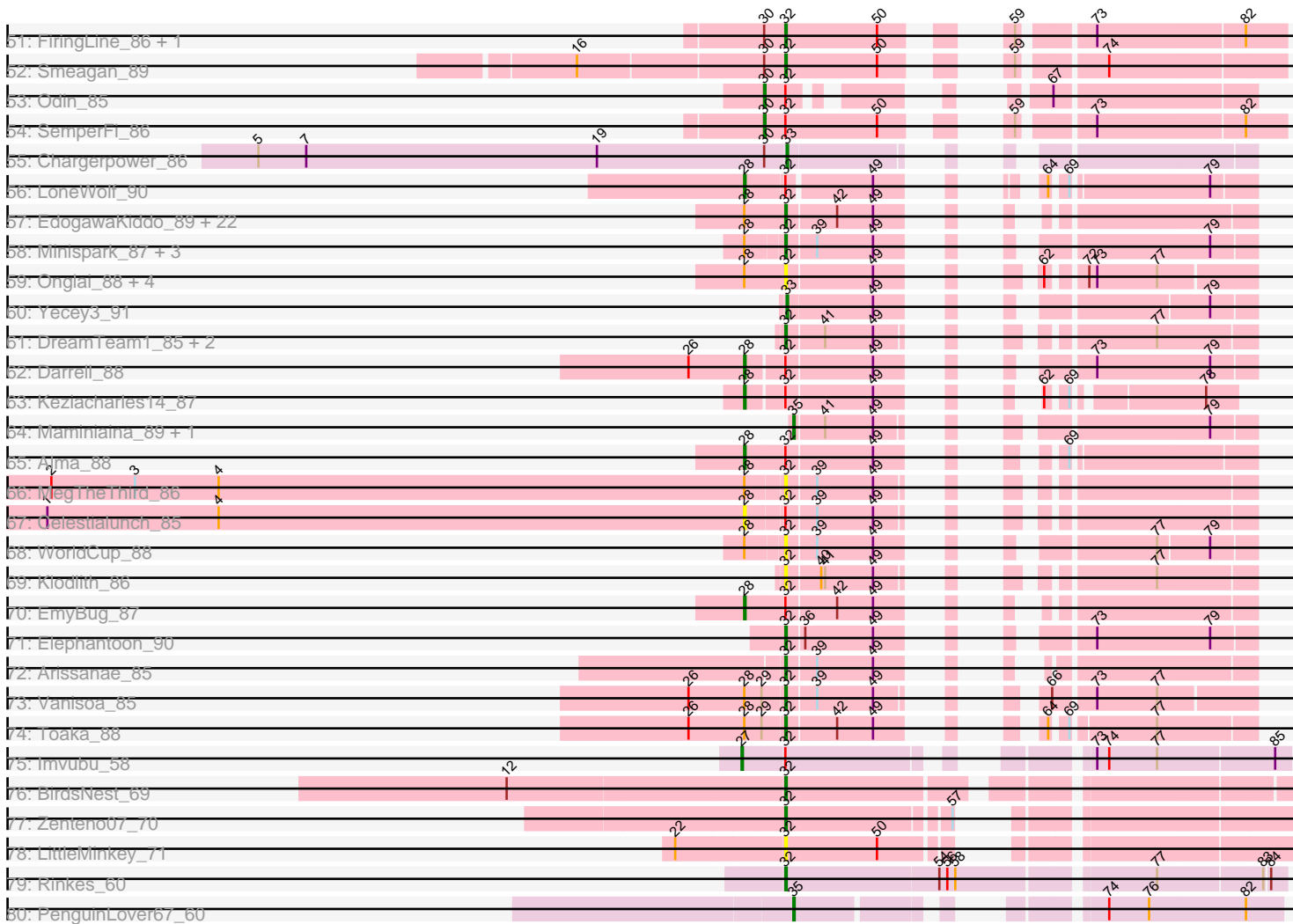


Pham 308244



Pham 308244



Note: Tracks are now grouped by subcluster and scaled. Switching in subcluster is indicated by changes in track color. Track scale is now set by default to display the region 30 bp upstream of start 1 to 30 bp downstream of the last possible start. If this default region is judged to be packed too tightly with annotated starts, the track will be further scaled to only show that region of the ORF with annotated starts. This action will be indicated by adding "Zoomed" to the title. For starts, yellow indicates the location of called starts comprised solely of Glimmer/GeneMark auto-annotations, green indicates the location of called starts with at least 1 manual gene annotation.

Pham 308244 Report

This analysis was run 06/27/26 on database version 652.

Pham number 308244 has 136 members, 26 are drafts.

Phages represented in each track:

- Track 1 : Zimmer_87
- Track 2 : Refuge_88
- Track 3 : Steamy_85
- Track 4 : DarthPhader_86
- Track 5 : Luchador_85
- Track 6 : Jeeves_88
- Track 7 : Sunhee_87
- Track 8 : Superchunk_86, Caraxes_87
- Track 9 : Tristan_82, Phaded_80, Bactobuster_78
- Track 10 : Ph8s_87
- Track 11 : LilTurb_87, Jerm_88, Whabigail7_85, Turbido_87, Agape74_88, Dignity_88, AbbyPaige_88
- Track 12 : Power_86, QueenB2_83, SnapTap_86, Georgie2_88, Crucio_86
- Track 13 : Trooper_86
- Track 14 : AN3_86, VA6_86
- Track 15 : First_0087, BengiVuitton_88
- Track 16 : Trixie_86
- Track 17 : LionsBait_85, HippoHollow_83
- Track 18 : Landor_84, IronMan_83
- Track 19 : Anselm_87
- Track 20 : Fameo_84, Heffalump_83
- Track 21 : Jaan_84
- Track 22 : EvilGenius_86, KingCyrus_85
- Track 23 : TarsusIV_85
- Track 24 : Leviathan_88
- Track 25 : Iwokeuplikedis_90
- Track 26 : Lokk_81
- Track 27 : Benvolio_85, Echild_89
- Track 28 : Deloris_88
- Track 29 : XianYue_85
- Track 30 : BiancaTri92_84
- Track 31 : BobSwaget_80, Rachaly_83, Miko_81
- Track 32 : Adzzy_87
- Track 33 : LadyBird_90
- Track 34 : Retro23_86
- Track 35 : Che12_88
- Track 36 : NothingSpecial_81

- Track 37 : 20ES_88
- Track 38 : ChipMunk_87
- Track 39 : Pukovnik_81
- Track 40 : Prudy_81
- Track 41 : ArcherNM_81
- Track 42 : DudeLittle_84, Dalmatian_86
- Track 43 : Herbertwm_86
- Track 44 : NicoleTera_85
- Track 45 : SweetiePie_86
- Track 46 : DeerParkTS_82
- Track 47 : CRB1_87
- Track 48 : JoshKayV_88
- Track 49 : SwirlSquare_88
- Track 50 : ForesterFrank_81
- Track 51 : FiringLine_86, QueenBeesly_86
- Track 52 : Smeagan_89
- Track 53 : Odin_85
- Track 54 : SemperFi_86
- Track 55 : Chargerpower_86
- Track 56 : LoneWolf_90
- Track 57 : EdogawaKiddo_89, Phaeder_90, Scherzo_88, HortumSL17_91, Phonnegut_90, Qobbit_88, Lilleskat_87, Aliter_83, Tubs_90, Sachima_86, Conquerage_88, Catalina_92, Fayely_88, Pioneer_90, Eidsmoe_88, Beemo_90, Myxus_90, ExplosioNervosa_88, Priya_88, Ugenie5_77, PackMan_85, Spouty_88, Ayanochan_88
- Track 58 : Minispark_87, Bellris_87, Rahalelujah_89, CogOmlette_87
- Track 59 : Onglai_88, Jiawan_88, Halex_89, Hanray_88, RyeScarlet_91
- Track 60 : Yecey3_91
- Track 61 : DreamTeam1_85, SheaKeira_85, Charm_85
- Track 62 : Darrell_88
- Track 63 : Keziacharles14_87
- Track 64 : Maminiaina_89, BogosyJay_89
- Track 65 : Alma_88
- Track 66 : MegTheThird_86
- Track 67 : Celestialunch_85
- Track 68 : WorldCup_88
- Track 69 : Klodlith_86
- Track 70 : EmyBug_87
- Track 71 : Elephantoon_90
- Track 72 : Arissanae_85
- Track 73 : Vanisoa_85
- Track 74 : Toaka_88
- Track 75 : Imvubu_58
- Track 76 : BirdsNest_69
- Track 77 : Zenteno07_70
- Track 78 : LittleMinkey_71
- Track 79 : Rinkes_60
- Track 80 : PenguinLover67_60

Summary of Final Annotations (See graph section above for start numbers):

The start number called the most often in the published annotations is 32, it was called in 84 of the 110 non-draft genes in the pham.

Genes that call this "Most Annotated" start:

- AbbyPaige_88, Adzzy_87, Agape74_88, Aliter_83, Anselm_87, Arissanae_85, Ayanochan_88, Bactobuster_78, Beemo_90, Bellris_87, Benvolio_85, BiancaTri92_84, BirdsNest_69, BobSwaget_80, Caraxes_87, Catalina_92, Charm_85, CogOmlette_87, Conquerage_88, Crucio_86, Dalmatian_86, DeerParkTS_82, Deloris_88, Dignity_88, DreamTeam1_85, DudeLittle_84, Echild_89, EdogawaKiddo_89, Eidsmoe_88, Elephantoon_90, EvilGenius_86, ExplosioNervosa_88, Fameo_84, Fayely_88, FiringLine_86, ForesterFrank_81, Georgie2_88, Hanray_88, Heffalump_83, Herbertwm_86, HippoHollow_83, Horex_89, HortumSL17_91, IronMan_83, Iwokeuplikedis_90, Jaan_84, Jeeves_88, Jerm_88, Jiawan_88, JoshKayV_88, KingCyrus_85, Klodlith_86, Landor_84, Leviathan_88, LilTurb_87, Lilleskat_87, LionsBait_85, LittleMinkey_71, Lokk_81, Luchador_85, MegTheThird_86, Miko_81, Minispark_87, Myxus_90, NicoleTera_85, NothingSpecial_81, Onglai_88, PackMan_85, Ph8s_87, Phaded_80, Phaeder_90, Phonnegut_90, Pioneer_90, Power_86, Priya_88, Prudy_81, Pukovnik_81, Qobbit_88, QueenB2_83, QueenBeesly_86, Rachaly_83, Rahalelujah_89, Retro23_86, Rinkes_60, RyeScarlet_91, Sachima_86, Scherzo_88, SheaKeira_85, Smeagan_89, SnapTap_86, Spouty_88, Sunhee_87, Superchunk_86, SwirlSquare_88, TarsusIV_85, Toaka_88, Tristan_82, Trooper_86, Tubs_90, Turbido_87, Ugenie5_77, Vanisoa_85, Whabigail7_85, WorldCup_88, XianYue_85, Zenteno07_70,

Genes that have the "Most Annotated" start but do not call it:

- 20ES_88, AN3_86, Alma_88, ArcherNM_81, BengiVuitton_88, CRB1_87, Celestiallunch_85, Che12_88, ChipMunk_87, Darrell_88, EmyBug_87, First_0087, Imvubu_58, Keziacharles14_87, LadyBird_90, LoneWolf_90, Odin_85, SemperFi_86, SweetiePie_86, VA6_86,

Genes that do not have the "Most Annotated" start:

- BogosyJay_89, Chargerpower_86, DarthPhader_86, Maminiaina_89, PenguinLover67_60, Refuge_88, Steamy_85, Trixie_86, Yecy3_91, Zimmer_87,

Summary by start number:

Start 27:

- Found in 1 of 136 (0.7%) of genes in pham
- Manual Annotations of this start: 1 of 110
- Called 100.0% of time when present
- Phage (with cluster) where this start called: Imvubu_58 (B10),

Start 28:

- Found in 43 of 136 (31.6%) of genes in pham
- Manual Annotations of this start: 5 of 110
- Called 14.0% of time when present
- Phage (with cluster) where this start called: Alma_88 (A9), Celestiallunch_85 (A9), Darrell_88 (A9), EmyBug_87 (A9), Keziacharles14_87 (A9), LoneWolf_90 (A9),

Start 30:

- Found in 60 of 136 (44.1%) of genes in pham

- Manual Annotations of this start: 10 of 110
- Called 21.7% of time when present
- Phage (with cluster) where this start called: 20ES_88 (A2), AN3_86 (A2), ArcherNM_81 (A2), BengiVuitton_88 (A2), CRB1_87 (A2), Che12_88 (A2), ChipMunk_87 (A2), First_0087 (A2), LadyBird_90 (A2), Odin_85 (A2), SemperFi_86 (A2), SweetiePie_86 (A2), VA6_86 (A2),

Start 31:

- Found in 1 of 136 (0.7%) of genes in pham
- Manual Annotations of this start: 1 of 110
- Called 100.0% of time when present
- Phage (with cluster) where this start called: Trixie_86 (A2),

Start 32:

- Found in 126 of 136 (92.6%) of genes in pham
- Manual Annotations of this start: 84 of 110
- Called 84.1% of time when present
- Phage (with cluster) where this start called: AbbyPaige_88 (A2), Adzzy_87 (A2), Agape74_88 (A2), Aliter_83 (A9), Anselm_87 (A2), Arissanae_85 (A9), Ayanochan_88 (A9), Bactobuster_78 (A2), Beemo_90 (A9), Bellris_87 (A9), Benvolio_85 (A2), BiancaTri92_84 (A2), BirdsNest_69 (B13), BobSwaget_80 (A2), Caraxes_87 (A2), Catalina_92 (A9), Charm_85 (A9), CogOmlette_87 (A9), Conquerage_88 (A9), Crucio_86 (A2), Dalmatian_86 (A2), DeerParkTS_82 (A2), Deloris_88 (A2), Dignity_88 (A2), DreamTeam1_85 (A9), DudeLittle_84 (A2), Echild_89 (A2), EdogawaKiddo_89 (A9), Eidsmoe_88 (A9), Elephantoon_90 (A9), EvilGenius_86 (A2), ExplosioNervosa_88 (A9), Fameo_84 (A2), Fayely_88 (A9), FiringLine_86 (A2), ForesterFrank_81 (A2), Georgie2_88 (A2), Hanray_88 (A9), Heffalump_83 (A2), Herbertwm_86 (A2), HippoHollow_83 (A2), Horex_89 (A9), HortumSL17_91 (A9), IronMan_83 (A2), Iwokeuplikedis_90 (A2), Jaan_84 (A2), Jeeves_88 (A14), Jerm_88 (A2), Jiawan_88 (A9), JoshKayV_88 (A2), KingCyrus_85 (A2), Klodlith_86 (A9), Landor_84 (A2), Leviathan_88 (A2), LilTurb_87 (A2), Lilleskat_87 (A9), LionsBait_85 (A2), LittleMinkey_71 (B13), Lokk_81 (A2), Luchador_85 (A14), MegTheThird_86 (A9), Miko_81 (A2), Minispark_87 (A9), Myxus_90 (A9), NicoleTera_85 (A2), NothingSpecial_81 (A2), Onglai_88 (A9), PackMan_85 (A9), Ph8s_87 (A2), Phaded_80 (A2), Phaeder_90 (A9), Phonnegut_90 (A9), Pioneer_90 (A9), Power_86 (A2), Priya_88 (A9), Prudy_81 (A2), Pukovnik_81 (A2), Qobbit_88 (A9), QueenB2_83 (A2), QueenBeesly_86 (A2), Rachaly_83 (A2), Rahalelujah_89 (A9), Retro23_86 (A2), Rinkes_60 (B9), RyeScarlet_91 (A9), Sachima_86 (A9), Scherzo_88 (A9), SheaKeira_85 (A9), Smeagan_89 (A2), SnapTap_86 (A2), Spouty_88 (A9), Sunhee_87 (A14), Superchunk_86 (A2), SwirlSquare_88 (A2), TarsusIV_85 (A2), Toaka_88 (A9), Tristan_82 (A2), Trooper_86 (A2), Tubs_90 (A9), Turbido_87 (A2), Ugenie5_77 (A9), Vanisoa_85 (A9), Whabigail7_85 (A2), WorldCup_88 (A9), XianYue_85 (A2), Zenteno07_70 (B13),

Start 33:

- Found in 2 of 136 (1.5%) of genes in pham
- Manual Annotations of this start: 2 of 110
- Called 100.0% of time when present
- Phage (with cluster) where this start called: Chargerpower_86 (A22), Yecy3_91 (A9),

Start 35:

- Found in 7 of 136 (5.1%) of genes in pham

- Manual Annotations of this start: 7 of 110
- Called 100.0% of time when present
- Phage (with cluster) where this start called: BogosyJay_89 (A9), DARTHPhader_86 (A12), Maminiaina_89 (A9), PenguinLover67_60 (B9), Refuge_88 (A12), Steamy_85 (A12), Zimmer_87 (A12),

Summary by clusters:

There are 8 clusters represented in this pham: A14, A22, A12, A2, B13, B10, A9, B9,

Info for manual annotations of cluster A12:

- Start number 35 was manually annotated 4 times for cluster A12.

Info for manual annotations of cluster A14:

- Start number 32 was manually annotated 3 times for cluster A14.

Info for manual annotations of cluster A2:

- Start number 30 was manually annotated 10 times for cluster A2.
- Start number 31 was manually annotated 1 time for cluster A2.
- Start number 32 was manually annotated 51 times for cluster A2.

Info for manual annotations of cluster A22:

- Start number 33 was manually annotated 1 time for cluster A22.

Info for manual annotations of cluster A9:

- Start number 28 was manually annotated 5 times for cluster A9.
- Start number 32 was manually annotated 27 times for cluster A9.
- Start number 33 was manually annotated 1 time for cluster A9.
- Start number 35 was manually annotated 2 times for cluster A9.

Info for manual annotations of cluster B10:

- Start number 27 was manually annotated 1 time for cluster B10.

Info for manual annotations of cluster B13:

- Start number 32 was manually annotated 2 times for cluster B13.

Info for manual annotations of cluster B9:

- Start number 32 was manually annotated 1 time for cluster B9.
- Start number 35 was manually annotated 1 time for cluster B9.

Gene Information:

Gene: 20ES_88 Start: 48926, Stop: 48621, Start Num: 30

Candidate Starts for 20ES_88:

(Start: 30 @48926 has 10 MA's), (Start: 32 @48911 has 84 MA's), (51, 48845), (60, 48803), (73, 48758), (81, 48653),

Gene: AN3_86 Start: 47190, Stop: 46879, Start Num: 30

Candidate Starts for AN3_86:

(Start: 30 @47190 has 10 MA's), (Start: 32 @47175 has 84 MA's), (43, 47130), (50, 47106), (59, 47061), (81, 46911),

Gene: AbbyPaige_88 Start: 49174, Stop: 48878, Start Num: 32

Candidate Starts for AbbyPaige_88:

(16, 49324), (Start: 30 @49189 has 10 MA's), (Start: 32 @49174 has 84 MA's), (50, 49105), (59, 49060), (73, 49015), (74, 49006),

Gene: Adzzy_87 Start: 47625, Stop: 47383, Start Num: 32

Candidate Starts for Adzzy_87:

(25, 47697), (Start: 30 @47640 has 10 MA's), (Start: 32 @47625 has 84 MA's), (59, 47547), (67, 47526), (76, 47460),

Gene: Agape74_88 Start: 49150, Stop: 48854, Start Num: 32

Candidate Starts for Agape74_88:

(16, 49300), (Start: 30 @49165 has 10 MA's), (Start: 32 @49150 has 84 MA's), (50, 49081), (59, 49036), (73, 48991), (74, 48982),

Gene: Aliter_83 Start: 46251, Stop: 46006, Start Num: 32

Candidate Starts for Aliter_83:

(Start: 28 @46278 has 5 MA's), (Start: 32 @46251 has 84 MA's), (42, 46215), (49, 46188),

Gene: Alma_88 Start: 49120, Stop: 48845, Start Num: 28

Candidate Starts for Alma_88:

(Start: 28 @49120 has 5 MA's), (Start: 32 @49093 has 84 MA's), (49, 49030), (69, 48973),

Gene: Anselm_87 Start: 49020, Stop: 48757, Start Num: 32

Candidate Starts for Anselm_87:

(Start: 30 @49035 has 10 MA's), (Start: 32 @49020 has 84 MA's), (43, 48975), (50, 48951),

Gene: ArcherNM_81 Start: 48470, Stop: 48147, Start Num: 30

Candidate Starts for ArcherNM_81:

(18, 48590), (Start: 30 @48470 has 10 MA's), (Start: 32 @48455 has 84 MA's), (47, 48395), (50, 48386), (59, 48314), (73, 48263),

Gene: Arissanae_85 Start: 48962, Stop: 48717, Start Num: 32

Candidate Starts for Arissanae_85:

(Start: 32 @48962 has 84 MA's), (39, 48941), (49, 48899),

Gene: Ayanochan_88 Start: 48874, Stop: 48629, Start Num: 32

Candidate Starts for Ayanochan_88:

(Start: 28 @48901 has 5 MA's), (Start: 32 @48874 has 84 MA's), (42, 48838), (49, 48811),

Gene: Bactobuster_78 Start: 47603, Stop: 47352, Start Num: 32

Candidate Starts for Bactobuster_78:

(6, 47975), (21, 47696), (Start: 32 @47603 has 84 MA's), (82, 47372),

Gene: Beemo_90 Start: 49084, Stop: 48839, Start Num: 32

Candidate Starts for Beemo_90:

(Start: 28 @49111 has 5 MA's), (Start: 32 @49084 has 84 MA's), (42, 49048), (49, 49021),

Gene: Bellris_87 Start: 48609, Stop: 48355, Start Num: 32

Candidate Starts for Bellris_87:

(Start: 28 @48633 has 5 MA's), (Start: 32 @48609 has 84 MA's), (39, 48588), (49, 48546), (79, 48387),

Gene: BengiVuitton_88 Start: 49031, Stop: 48726, Start Num: 30
Candidate Starts for BengiVuitton_88:
(Start: 30 @49031 has 10 MA's), (Start: 32 @49016 has 84 MA's), (51, 48950), (60, 48908), (81, 48758),

Gene: Benvolio_85 Start: 48794, Stop: 48495, Start Num: 32
Candidate Starts for Benvolio_85:
(15, 48935), (Start: 30 @48809 has 10 MA's), (Start: 32 @48794 has 84 MA's), (42, 48755), (50, 48725), (59, 48677), (82, 48524),

Gene: BiancaTri92_84 Start: 48631, Stop: 48332, Start Num: 32
Candidate Starts for BiancaTri92_84:
(23, 48709), (Start: 30 @48646 has 10 MA's), (Start: 32 @48631 has 84 MA's), (42, 48592), (43, 48586), (50, 48562), (51, 48553), (82, 48361),

Gene: BirdsNest_69 Start: 56932, Stop: 56600, Start Num: 32
Candidate Starts for BirdsNest_69:
(12, 57136), (Start: 32 @56932 has 84 MA's),

Gene: BobSwaget_80 Start: 46489, Stop: 46259, Start Num: 32
Candidate Starts for BobSwaget_80:
(Start: 30 @46504 has 10 MA's), (Start: 32 @46489 has 84 MA's), (58, 46426),

Gene: BogosyJay_89 Start: 49135, Stop: 48884, Start Num: 35
Candidate Starts for BogosyJay_89:
(Start: 35 @49135 has 7 MA's), (41, 49114), (49, 49078), (79, 48916),

Gene: CRB1_87 Start: 49179, Stop: 48874, Start Num: 30
Candidate Starts for CRB1_87:
(Start: 30 @49179 has 10 MA's), (Start: 32 @49164 has 84 MA's), (51, 49098), (60, 49056), (81, 48906),

Gene: Caraxes_87 Start: 47583, Stop: 47341, Start Num: 32
Candidate Starts for Caraxes_87:
(Start: 30 @47598 has 10 MA's), (Start: 32 @47583 has 84 MA's), (67, 47484),

Gene: Catalina_92 Start: 49198, Stop: 48953, Start Num: 32
Candidate Starts for Catalina_92:
(Start: 28 @49225 has 5 MA's), (Start: 32 @49198 has 84 MA's), (42, 49162), (49, 49135),

Gene: Celestiallunch_85 Start: 48365, Stop: 48090, Start Num: 28
Candidate Starts for Celestiallunch_85:
(1, 48890), (4, 48761), (Start: 28 @48365 has 5 MA's), (Start: 32 @48341 has 84 MA's), (39, 48320), (49, 48278),

Gene: Chargerpower_86 Start: 47145, Stop: 46894, Start Num: 33
Candidate Starts for Chargerpower_86:
(5, 47541), (7, 47505), (19, 47286), (Start: 30 @47160 has 10 MA's), (Start: 33 @47145 has 2 MA's),

Gene: Charm_85 Start: 48488, Stop: 48237, Start Num: 32
Candidate Starts for Charm_85:
(Start: 32 @48488 has 84 MA's), (41, 48461), (49, 48425), (77, 48308),

Gene: Che12_88 Start: 47719, Stop: 47462, Start Num: 30

Candidate Starts for Che12_88:

(Start: 30 @47719 has 10 MA's), (Start: 32 @47704 has 84 MA's), (51, 47650), (59, 47626), (67, 47605), (76, 47539),

Gene: ChipMunk_87 Start: 50092, Stop: 49781, Start Num: 30

Candidate Starts for ChipMunk_87:

(Start: 30 @50092 has 10 MA's), (Start: 32 @50077 has 84 MA's), (50, 50008), (59, 49963), (73, 49918),

Gene: CogOmlette_87 Start: 48606, Stop: 48352, Start Num: 32

Candidate Starts for CogOmlette_87:

(Start: 28 @48630 has 5 MA's), (Start: 32 @48606 has 84 MA's), (39, 48585), (49, 48543), (79, 48384),

Gene: Conquerage_88 Start: 48859, Stop: 48614, Start Num: 32

Candidate Starts for Conquerage_88:

(Start: 28 @48886 has 5 MA's), (Start: 32 @48859 has 84 MA's), (42, 48823), (49, 48796),

Gene: Crucio_86 Start: 49024, Stop: 48728, Start Num: 32

Candidate Starts for Crucio_86:

(15, 49168), (Start: 30 @49039 has 10 MA's), (Start: 32 @49024 has 84 MA's), (50, 48955), (59, 48910), (73, 48865), (82, 48757),

Gene: Dalmatian_86 Start: 48805, Stop: 48542, Start Num: 32

Candidate Starts for Dalmatian_86:

(21, 48901), (Start: 30 @48820 has 10 MA's), (Start: 32 @48805 has 84 MA's), (50, 48736),

Gene: Darrell_88 Start: 48317, Stop: 48039, Start Num: 28

Candidate Starts for Darrell_88:

(26, 48359), (Start: 28 @48317 has 5 MA's), (Start: 32 @48293 has 84 MA's), (49, 48230), (73, 48155), (79, 48071),

Gene: DarthPhader_86 Start: 50000, Stop: 49740, Start Num: 35

Candidate Starts for DarthPhader_86:

(Start: 35 @50000 has 7 MA's), (49, 49940), (73, 49853), (77, 49808),

Gene: DeerParkTS_82 Start: 47533, Stop: 47222, Start Num: 32

Candidate Starts for DeerParkTS_82:

(Start: 30 @47548 has 10 MA's), (Start: 32 @47533 has 84 MA's), (38, 47512), (50, 47464), (52, 47452), (67, 47386), (82, 47251),

Gene: Deloris_88 Start: 48709, Stop: 48419, Start Num: 32

Candidate Starts for Deloris_88:

(Start: 30 @48724 has 10 MA's), (Start: 32 @48709 has 84 MA's), (51, 48643), (60, 48601), (81, 48451),

Gene: Dignity_88 Start: 49257, Stop: 48961, Start Num: 32

Candidate Starts for Dignity_88:

(16, 49407), (Start: 30 @49272 has 10 MA's), (Start: 32 @49257 has 84 MA's), (50, 49188), (59, 49143), (73, 49098), (74, 49089),

Gene: DreamTeam1_85 Start: 48336, Stop: 48085, Start Num: 32

Candidate Starts for DreamTeam1_85:

(Start: 32 @48336 has 84 MA's), (41, 48309), (49, 48273), (77, 48156),

Gene: DudeLittle_84 Start: 48523, Stop: 48260, Start Num: 32

Candidate Starts for DudeLittle_84:

(21, 48619), (Start: 30 @48538 has 10 MA's), (Start: 32 @48523 has 84 MA's), (50, 48454),

Gene: Echild_89 Start: 48818, Stop: 48519, Start Num: 32

Candidate Starts for Echild_89:

(15, 48959), (Start: 30 @48833 has 10 MA's), (Start: 32 @48818 has 84 MA's), (42, 48779), (50, 48749), (59, 48701), (82, 48548),

Gene: EdogawaKiddo_89 Start: 49161, Stop: 48916, Start Num: 32

Candidate Starts for EdogawaKiddo_89:

(Start: 28 @49188 has 5 MA's), (Start: 32 @49161 has 84 MA's), (42, 49125), (49, 49098),

Gene: Eidsmoe_88 Start: 48852, Stop: 48607, Start Num: 32

Candidate Starts for Eidsmoe_88:

(Start: 28 @48879 has 5 MA's), (Start: 32 @48852 has 84 MA's), (42, 48816), (49, 48789),

Gene: Elephantoon_90 Start: 49016, Stop: 48762, Start Num: 32

Candidate Starts for Elephantoon_90:

(Start: 32 @49016 has 84 MA's), (36, 49004), (49, 48953), (73, 48878), (79, 48794),

Gene: EmyBug_87 Start: 48881, Stop: 48609, Start Num: 28

Candidate Starts for EmyBug_87:

(Start: 28 @48881 has 5 MA's), (Start: 32 @48854 has 84 MA's), (42, 48818), (49, 48791),

Gene: EvilGenius_86 Start: 50078, Stop: 49782, Start Num: 32

Candidate Starts for EvilGenius_86:

(Start: 30 @50093 has 10 MA's), (Start: 32 @50078 has 84 MA's), (50, 50009), (59, 49964), (73, 49919),

Gene: ExplosioNervosa_88 Start: 48920, Stop: 48675, Start Num: 32

Candidate Starts for ExplosioNervosa_88:

(Start: 28 @48947 has 5 MA's), (Start: 32 @48920 has 84 MA's), (42, 48884), (49, 48857),

Gene: Fameo_84 Start: 48576, Stop: 48280, Start Num: 32

Candidate Starts for Fameo_84:

(21, 48672), (Start: 30 @48591 has 10 MA's), (Start: 32 @48576 has 84 MA's), (50, 48507), (59, 48462), (73, 48417), (82, 48309),

Gene: Fayely_88 Start: 48828, Stop: 48583, Start Num: 32

Candidate Starts for Fayely_88:

(Start: 28 @48855 has 5 MA's), (Start: 32 @48828 has 84 MA's), (42, 48792), (49, 48765),

Gene: FiringLine_86 Start: 48964, Stop: 48668, Start Num: 32

Candidate Starts for FiringLine_86:

(Start: 30 @48979 has 10 MA's), (Start: 32 @48964 has 84 MA's), (50, 48895), (59, 48850), (73, 48805), (82, 48697),

Gene: First_0087 Start: 48829, Stop: 48521, Start Num: 30

Candidate Starts for First_0087:

(Start: 30 @48829 has 10 MA's), (Start: 32 @48814 has 84 MA's), (51, 48748), (60, 48706), (81, 48553),

Gene: ForesterFrank_81 Start: 48650, Stop: 48381, Start Num: 32

Candidate Starts for ForesterFrank_81:

(9, 48845), (14, 48794), (Start: 30 @48665 has 10 MA's), (Start: 32 @48650 has 84 MA's), (44, 48617), (75, 48470), (77, 48452), (80, 48404),

Gene: Georgie2_88 Start: 49168, Stop: 48872, Start Num: 32

Candidate Starts for Georgie2_88:

(15, 49312), (Start: 30 @49183 has 10 MA's), (Start: 32 @49168 has 84 MA's), (50, 49099), (59, 49054), (73, 49009), (82, 48901),

Gene: Hanray_88 Start: 49149, Stop: 48895, Start Num: 32

Candidate Starts for Hanray_88:

(Start: 28 @49176 has 5 MA's), (Start: 32 @49149 has 84 MA's), (49, 49086), (62, 49038), (72, 49017), (73, 49011), (77, 48966),

Gene: Heffalump_83 Start: 49044, Stop: 48748, Start Num: 32

Candidate Starts for Heffalump_83:

(21, 49140), (Start: 30 @49059 has 10 MA's), (Start: 32 @49044 has 84 MA's), (50, 48975), (59, 48930), (73, 48885), (82, 48777),

Gene: Herbertwm_86 Start: 49248, Stop: 48952, Start Num: 32

Candidate Starts for Herbertwm_86:

(Start: 32 @49248 has 84 MA's), (47, 49188), (60, 49137), (76, 49050),

Gene: HippoHollow_83 Start: 49676, Stop: 49380, Start Num: 32

Candidate Starts for HippoHollow_83:

(Start: 32 @49676 has 84 MA's), (50, 49607), (59, 49562), (73, 49517),

Gene: Holecx_89 Start: 49162, Stop: 48908, Start Num: 32

Candidate Starts for Holecx_89:

(Start: 28 @49189 has 5 MA's), (Start: 32 @49162 has 84 MA's), (49, 49099), (62, 49051), (72, 49030), (73, 49024), (77, 48979),

Gene: HortumSL17_91 Start: 49196, Stop: 48951, Start Num: 32

Candidate Starts for HortumSL17_91:

(Start: 28 @49223 has 5 MA's), (Start: 32 @49196 has 84 MA's), (42, 49160), (49, 49133),

Gene: Imvubu_58 Start: 54802, Stop: 54467, Start Num: 27

Candidate Starts for Imvubu_58:

(Start: 27 @54802 has 1 MA's), (Start: 32 @54772 has 84 MA's), (73, 54607), (74, 54598), (77, 54562), (85, 54478),

Gene: IronMan_83 Start: 49127, Stop: 48876, Start Num: 32

Candidate Starts for IronMan_83:

(Start: 32 @49127 has 84 MA's), (82, 48896),

Gene: Iwokeuplikedis_90 Start: 49128, Stop: 48847, Start Num: 32

Candidate Starts for Iwokeuplikedis_90:

(Start: 32 @49128 has 84 MA's), (45, 49092), (51, 49065), (55, 49044), (63, 49017), (72, 48993), (77, 48942),

Gene: Jaan_84 Start: 49235, Stop: 48984, Start Num: 32

Candidate Starts for Jaan_84:

(6, 49607), (21, 49328), (Start: 32 @49235 has 84 MA's), (59, 49157), (82, 49004),

Gene: Jeeves_88 Start: 47130, Stop: 46858, Start Num: 32

Candidate Starts for Jeeves_88:

(24, 47208), (Start: 30 @47145 has 10 MA's), (Start: 32 @47130 has 84 MA's), (51, 47067), (53, 47061), (61, 47019), (65, 47001), (74, 46965),

Gene: Jerm_88 Start: 49225, Stop: 48929, Start Num: 32

Candidate Starts for Jerm_88:

(16, 49375), (Start: 30 @49240 has 10 MA's), (Start: 32 @49225 has 84 MA's), (50, 49156), (59, 49111), (73, 49066), (74, 49057),

Gene: Jiawan_88 Start: 49179, Stop: 48925, Start Num: 32

Candidate Starts for Jiawan_88:

(Start: 28 @49206 has 5 MA's), (Start: 32 @49179 has 84 MA's), (49, 49116), (62, 49068), (72, 49047), (73, 49041), (77, 48996),

Gene: JoshKayV_88 Start: 49393, Stop: 49097, Start Num: 32

Candidate Starts for JoshKayV_88:

(Start: 32 @49393 has 84 MA's), (50, 49324), (59, 49279), (74, 49225), (81, 49129),

Gene: Keziacharles14_87 Start: 49677, Stop: 49432, Start Num: 28

Candidate Starts for Keziacharles14_87:

(Start: 28 @49677 has 5 MA's), (Start: 32 @49653 has 84 MA's), (49, 49590), (62, 49551), (69, 49539), (78, 49455),

Gene: KingCyrus_85 Start: 50091, Stop: 49795, Start Num: 32

Candidate Starts for KingCyrus_85:

(Start: 30 @50106 has 10 MA's), (Start: 32 @50091 has 84 MA's), (50, 50022), (59, 49977), (73, 49932),

Gene: Klodlith_86 Start: 48558, Stop: 48307, Start Num: 32

Candidate Starts for Klodlith_86:

(Start: 32 @48558 has 84 MA's), (40, 48534), (41, 48531), (49, 48495), (77, 48378),

Gene: LadyBird_90 Start: 49324, Stop: 49019, Start Num: 30

Candidate Starts for LadyBird_90:

(Start: 30 @49324 has 10 MA's), (Start: 32 @49309 has 84 MA's), (51, 49243), (60, 49201), (73, 49156), (81, 49051),

Gene: Landor_84 Start: 49160, Stop: 48909, Start Num: 32

Candidate Starts for Landor_84:

(Start: 32 @49160 has 84 MA's), (82, 48929),

Gene: Leviathan_88 Start: 49306, Stop: 49010, Start Num: 32

Candidate Starts for Leviathan_88:

(16, 49456), (Start: 30 @49321 has 10 MA's), (Start: 32 @49306 has 84 MA's), (50, 49237), (53, 49222), (59, 49192), (73, 49147), (74, 49138),

Gene: LilTurb_87 Start: 49102, Stop: 48806, Start Num: 32

Candidate Starts for LilTurb_87:

(16, 49252), (Start: 30 @49117 has 10 MA's), (Start: 32 @49102 has 84 MA's), (50, 49033), (59, 48988), (73, 48943), (74, 48934),

Gene: Lilleskat_87 Start: 49150, Stop: 48905, Start Num: 32

Candidate Starts for Lilleskat_87:

(Start: 28 @49177 has 5 MA's), (Start: 32 @49150 has 84 MA's), (42, 49114), (49, 49087),

Gene: LionsBait_85 Start: 49616, Stop: 49320, Start Num: 32

Candidate Starts for LionsBait_85:

(Start: 32 @49616 has 84 MA's), (50, 49547), (59, 49502), (73, 49457),

Gene: LittleMinkey_71 Start: 56857, Stop: 56546, Start Num: 32

Candidate Starts for LittleMinkey_71:

(22, 56935), (Start: 32 @56857 has 84 MA's), (50, 56788),

Gene: Lokk_81 Start: 47110, Stop: 46880, Start Num: 32

Candidate Starts for Lokk_81:

(14, 47272), (Start: 30 @47125 has 10 MA's), (Start: 32 @47110 has 84 MA's), (58, 47047),

Gene: LoneWolf_90 Start: 49212, Stop: 48946, Start Num: 28

Candidate Starts for LoneWolf_90:

(Start: 28 @49212 has 5 MA's), (Start: 32 @49188 has 84 MA's), (49, 49128), (64, 49083), (69, 49074), (79, 48978),

Gene: Luchador_85 Start: 48225, Stop: 47965, Start Num: 32

Candidate Starts for Luchador_85:

(Start: 32 @48225 has 84 MA's), (39, 48201), (51, 48162), (65, 48108),

Gene: Maminiaina_89 Start: 49117, Stop: 48866, Start Num: 35

Candidate Starts for Maminiaina_89:

(Start: 35 @49117 has 7 MA's), (41, 49096), (49, 49060), (79, 48898),

Gene: MegTheThird_86 Start: 48559, Stop: 48308, Start Num: 32

Candidate Starts for MegTheThird_86:

(2, 49105), (3, 49042), (4, 48979), (Start: 28 @48583 has 5 MA's), (Start: 32 @48559 has 84 MA's), (39, 48538), (49, 48496),

Gene: Miko_81 Start: 47875, Stop: 47645, Start Num: 32

Candidate Starts for Miko_81:

(Start: 30 @47890 has 10 MA's), (Start: 32 @47875 has 84 MA's), (58, 47812),

Gene: Minispark_87 Start: 48603, Stop: 48349, Start Num: 32

Candidate Starts for Minispark_87:

(Start: 28 @48627 has 5 MA's), (Start: 32 @48603 has 84 MA's), (39, 48582), (49, 48540), (79, 48381),

Gene: Myxus_90 Start: 49196, Stop: 48951, Start Num: 32

Candidate Starts for Myxus_90:

(Start: 28 @49223 has 5 MA's), (Start: 32 @49196 has 84 MA's), (42, 49160), (49, 49133),

Gene: NicoleTera_85 Start: 48705, Stop: 48442, Start Num: 32

Candidate Starts for NicoleTera_85:

(20, 48834), (Start: 30 @48720 has 10 MA's), (Start: 32 @48705 has 84 MA's), (42, 48666), (50, 48636), (51, 48627),

Gene: NothingSpecial_81 Start: 48512, Stop: 48231, Start Num: 32

Candidate Starts for NothingSpecial_81:

(10, 48719), (Start: 32 @48512 has 84 MA's), (42, 48473), (43, 48467), (50, 48443), (59, 48395), (75, 48332),

Gene: Odin_85 Start: 48071, Stop: 47814, Start Num: 30

Candidate Starts for Odin_85:

(Start: 30 @48071 has 10 MA's), (Start: 32 @48056 has 84 MA's), (67, 47957),

Gene: Onglai_88 Start: 47351, Stop: 47097, Start Num: 32

Candidate Starts for Onglai_88:

(Start: 28 @47378 has 5 MA's), (Start: 32 @47351 has 84 MA's), (49, 47288), (62, 47240), (72, 47219), (73, 47213), (77, 47168),

Gene: PackMan_85 Start: 47110, Stop: 46865, Start Num: 32

Candidate Starts for PackMan_85:

(Start: 28 @47137 has 5 MA's), (Start: 32 @47110 has 84 MA's), (42, 47074), (49, 47047),

Gene: PenguinLover67_60 Start: 56278, Stop: 55991, Start Num: 35

Candidate Starts for PenguinLover67_60:

(Start: 35 @56278 has 7 MA's), (74, 56119), (76, 56089), (82, 56017),

Gene: Ph8s_87 Start: 47838, Stop: 47596, Start Num: 32

Candidate Starts for Ph8s_87:

(Start: 30 @47853 has 10 MA's), (Start: 32 @47838 has 84 MA's), (59, 47760), (67, 47739),

Gene: Phaded_80 Start: 49118, Stop: 48867, Start Num: 32

Candidate Starts for Phaded_80:

(6, 49490), (21, 49211), (Start: 32 @49118 has 84 MA's), (82, 48887),

Gene: Phaeder_90 Start: 49071, Stop: 48826, Start Num: 32

Candidate Starts for Phaeder_90:

(Start: 28 @49098 has 5 MA's), (Start: 32 @49071 has 84 MA's), (42, 49035), (49, 49008),

Gene: Phonnegut_90 Start: 49083, Stop: 48838, Start Num: 32

Candidate Starts for Phonnegut_90:

(Start: 28 @49110 has 5 MA's), (Start: 32 @49083 has 84 MA's), (42, 49047), (49, 49020),

Gene: Pioneer_90 Start: 49083, Stop: 48838, Start Num: 32

Candidate Starts for Pioneer_90:

(Start: 28 @49110 has 5 MA's), (Start: 32 @49083 has 84 MA's), (42, 49047), (49, 49020),

Gene: Power_86 Start: 49167, Stop: 48871, Start Num: 32

Candidate Starts for Power_86:

(15, 49311), (Start: 30 @49182 has 10 MA's), (Start: 32 @49167 has 84 MA's), (50, 49098), (59, 49053), (73, 49008), (82, 48900),

Gene: Priya_88 Start: 48855, Stop: 48610, Start Num: 32

Candidate Starts for Priya_88:

(Start: 28 @48882 has 5 MA's), (Start: 32 @48855 has 84 MA's), (42, 48819), (49, 48792),

Gene: Prudy_81 Start: 48955, Stop: 48647, Start Num: 32

Candidate Starts for Prudy_81:

(14, 49102), (Start: 30 @48970 has 10 MA's), (Start: 32 @48955 has 84 MA's), (47, 48895), (50, 48886), (59, 48814), (73, 48763),

Gene: Pukovnik_81 Start: 48588, Stop: 48337, Start Num: 32

Candidate Starts for Pukovnik_81:

(Start: 32 @48588 has 84 MA's), (48, 48561), (82, 48357),

Gene: Qobbit_88 Start: 48817, Stop: 48572, Start Num: 32

Candidate Starts for Qobbit_88:

(Start: 28 @48844 has 5 MA's), (Start: 32 @48817 has 84 MA's), (42, 48781), (49, 48754),

Gene: QueenB2_83 Start: 48257, Stop: 47961, Start Num: 32

Candidate Starts for QueenB2_83:

(15, 48401), (Start: 30 @48272 has 10 MA's), (Start: 32 @48257 has 84 MA's), (50, 48188), (59, 48143), (73, 48098), (82, 47990),

Gene: QueenBeesly_86 Start: 48964, Stop: 48668, Start Num: 32

Candidate Starts for QueenBeesly_86:

(Start: 30 @48979 has 10 MA's), (Start: 32 @48964 has 84 MA's), (50, 48895), (59, 48850), (73, 48805), (82, 48697),

Gene: Rachaly_83 Start: 48018, Stop: 47788, Start Num: 32

Candidate Starts for Rachaly_83:

(Start: 30 @48033 has 10 MA's), (Start: 32 @48018 has 84 MA's), (58, 47955),

Gene: Rahalelujah_89 Start: 48618, Stop: 48364, Start Num: 32

Candidate Starts for Rahalelujah_89:

(Start: 28 @48642 has 5 MA's), (Start: 32 @48618 has 84 MA's), (39, 48597), (49, 48555), (79, 48396),

Gene: Refuge_88 Start: 50832, Stop: 50584, Start Num: 35

Candidate Starts for Refuge_88:

(Start: 35 @50832 has 7 MA's), (49, 50775), (79, 50616),

Gene: Retro23_86 Start: 48647, Stop: 48384, Start Num: 32

Candidate Starts for Retro23_86:

(21, 48743), (Start: 30 @48662 has 10 MA's), (Start: 32 @48647 has 84 MA's), (43, 48602), (50, 48578),

Gene: Rinkes_60 Start: 56279, Stop: 55929, Start Num: 32

Candidate Starts for Rinkes_60:

(Start: 32 @56279 has 84 MA's), (54, 56165), (56, 56159), (58, 56153), (77, 56018), (83, 55943), (84, 55940),

Gene: RyeScarlet_91 Start: 49069, Stop: 48815, Start Num: 32

Candidate Starts for RyeScarlet_91:

(Start: 28 @49096 has 5 MA's), (Start: 32 @49069 has 84 MA's), (49, 49006), (62, 48958), (72, 48937), (73, 48931), (77, 48886),

Gene: Sachima_86 Start: 49098, Stop: 48853, Start Num: 32

Candidate Starts for Sachima_86:

(Start: 28 @49125 has 5 MA's), (Start: 32 @49098 has 84 MA's), (42, 49062), (49, 49035),

Gene: Scherzo_88 Start: 49115, Stop: 48870, Start Num: 32

Candidate Starts for Scherzo_88:

(Start: 28 @49142 has 5 MA's), (Start: 32 @49115 has 84 MA's), (42, 49079), (49, 49052),

Gene: SemperFi_86 Start: 48867, Stop: 48556, Start Num: 30

Candidate Starts for SemperFi_86:

(Start: 30 @48867 has 10 MA's), (Start: 32 @48852 has 84 MA's), (50, 48783), (59, 48738), (73, 48693), (82, 48585),

Gene: SheaKeira_85 Start: 48361, Stop: 48110, Start Num: 32

Candidate Starts for SheaKeira_85:

(Start: 32 @48361 has 84 MA's), (41, 48334), (49, 48298), (77, 48181),

Gene: Smeagan_89 Start: 49397, Stop: 49101, Start Num: 32

Candidate Starts for Smeagan_89:

(16, 49547), (Start: 30 @49412 has 10 MA's), (Start: 32 @49397 has 84 MA's), (50, 49328), (59, 49283), (74, 49229),

Gene: SnapTap_86 Start: 48823, Stop: 48527, Start Num: 32

Candidate Starts for SnapTap_86:

(15, 48967), (Start: 30 @48838 has 10 MA's), (Start: 32 @48823 has 84 MA's), (50, 48754), (59, 48709), (73, 48664), (82, 48556),

Gene: Spouty_88 Start: 48854, Stop: 48609, Start Num: 32

Candidate Starts for Spouty_88:

(Start: 28 @48881 has 5 MA's), (Start: 32 @48854 has 84 MA's), (42, 48818), (49, 48791),

Gene: Steamy_85 Start: 49811, Stop: 49554, Start Num: 35

Candidate Starts for Steamy_85:

(Start: 35 @49811 has 7 MA's), (49, 49751), (77, 49625),

Gene: Sunhee_87 Start: 46599, Stop: 46327, Start Num: 32

Candidate Starts for Sunhee_87:

(Start: 30 @46614 has 10 MA's), (Start: 32 @46599 has 84 MA's), (46, 46557), (51, 46536), (53, 46530), (61, 46488), (65, 46470),

Gene: Superchunk_86 Start: 47583, Stop: 47341, Start Num: 32

Candidate Starts for Superchunk_86:

(Start: 30 @47598 has 10 MA's), (Start: 32 @47583 has 84 MA's), (67, 47484),

Gene: SweetiePie_86 Start: 48971, Stop: 48660, Start Num: 30

Candidate Starts for SweetiePie_86:

(15, 49100), (Start: 30 @48971 has 10 MA's), (Start: 32 @48956 has 84 MA's), (50, 48887), (59, 48842), (73, 48797), (82, 48689),

Gene: SwirlSquare_88 Start: 47313, Stop: 47071, Start Num: 32

Candidate Starts for SwirlSquare_88:

(Start: 30 @47328 has 10 MA's), (Start: 32 @47313 has 84 MA's), (51, 47259), (59, 47235), (67, 47214), (76, 47148),

Gene: TarsusIV_85 Start: 48814, Stop: 48545, Start Num: 32

Candidate Starts for TarsusIV_85:

(13, 48976), (Start: 30 @48829 has 10 MA's), (Start: 32 @48814 has 84 MA's), (42, 48775), (50, 48745),

Gene: Toaka_88 Start: 48957, Stop: 48709, Start Num: 32

Candidate Starts for Toaka_88:

(26, 49023), (Start: 28 @48981 has 5 MA's), (29, 48969), (Start: 32 @48957 has 84 MA's), (42, 48921), (49, 48894), (64, 48846), (69, 48837), (77, 48780),

Gene: Tristan_82 Start: 48950, Stop: 48699, Start Num: 32

Candidate Starts for Tristan_82:

(6, 49322), (21, 49043), (Start: 32 @48950 has 84 MA's), (82, 48719),

Gene: Trixie_86 Start: 49391, Stop: 49113, Start Num: 31

Candidate Starts for Trixie_86:

(11, 49589), (Start: 31 @49391 has 1 MA's), (34, 49376), (37, 49361), (49, 49313), (68, 49253), (70, 49244), (71, 49241), (77, 49181),

Gene: Trooper_86 Start: 48532, Stop: 48263, Start Num: 32

Candidate Starts for Trooper_86:

(8, 48766), (17, 48667), (Start: 30 @48547 has 10 MA's), (Start: 32 @48532 has 84 MA's), (43, 48487), (50, 48463),

Gene: Tubs_90 Start: 49071, Stop: 48826, Start Num: 32

Candidate Starts for Tubs_90:

(Start: 28 @49098 has 5 MA's), (Start: 32 @49071 has 84 MA's), (42, 49035), (49, 49008),

Gene: Turbido_87 Start: 49118, Stop: 48822, Start Num: 32

Candidate Starts for Turbido_87:

(16, 49268), (Start: 30 @49133 has 10 MA's), (Start: 32 @49118 has 84 MA's), (50, 49049), (59, 49004), (73, 48959), (74, 48950),

Gene: Ugenie5_77 Start: 46559, Stop: 46314, Start Num: 32

Candidate Starts for Ugenie5_77:

(Start: 28 @46586 has 5 MA's), (Start: 32 @46559 has 84 MA's), (42, 46523), (49, 46496),

Gene: VA6_86 Start: 48761, Stop: 48450, Start Num: 30

Candidate Starts for VA6_86:

(Start: 30 @48761 has 10 MA's), (Start: 32 @48746 has 84 MA's), (43, 48701), (50, 48677), (59, 48632), (81, 48482),

Gene: Vanisoa_85 Start: 49296, Stop: 49042, Start Num: 32

Candidate Starts for Vanisoa_85:

(26, 49362), (Start: 28 @49320 has 5 MA's), (29, 49308), (Start: 32 @49296 has 84 MA's), (39, 49275), (49, 49233), (66, 49185), (73, 49158), (77, 49113),

Gene: Whabigail7_85 Start: 49116, Stop: 48820, Start Num: 32

Candidate Starts for Whabigail7_85:

(16, 49266), (Start: 30 @49131 has 10 MA's), (Start: 32 @49116 has 84 MA's), (50, 49047), (59, 49002), (73, 48957), (74, 48948),

Gene: WorldCup_88 Start: 48754, Stop: 48503, Start Num: 32

Candidate Starts for WorldCup_88:

(Start: 28 @48778 has 5 MA's), (Start: 32 @48754 has 84 MA's), (39, 48733), (49, 48691), (77, 48571), (79, 48535),

Gene: XianYue_85 Start: 48882, Stop: 48607, Start Num: 32

Candidate Starts for XianYue_85:

(21, 48981), (Start: 30 @48897 has 10 MA's), (Start: 32 @48882 has 84 MA's), (50, 48837), (59, 48789),

Gene: Yecey3_91 Start: 48834, Stop: 48583, Start Num: 33

Candidate Starts for Yecey3_91:

(Start: 33 @48834 has 2 MA's), (49, 48771), (79, 48615),

Gene: Zenteno07_70 Start: 57108, Stop: 56800, Start Num: 32

Candidate Starts for Zenteno07_70:

(Start: 32 @57108 has 84 MA's), (57, 56994),

Gene: Zimmer_87 Start: 50279, Stop: 50019, Start Num: 35

Candidate Starts for Zimmer_87:

(Start: 28 @50306 has 5 MA's), (Start: 35 @50279 has 7 MA's), (49, 50222), (70, 50153), (71, 50150), (73, 50135), (77, 50090),