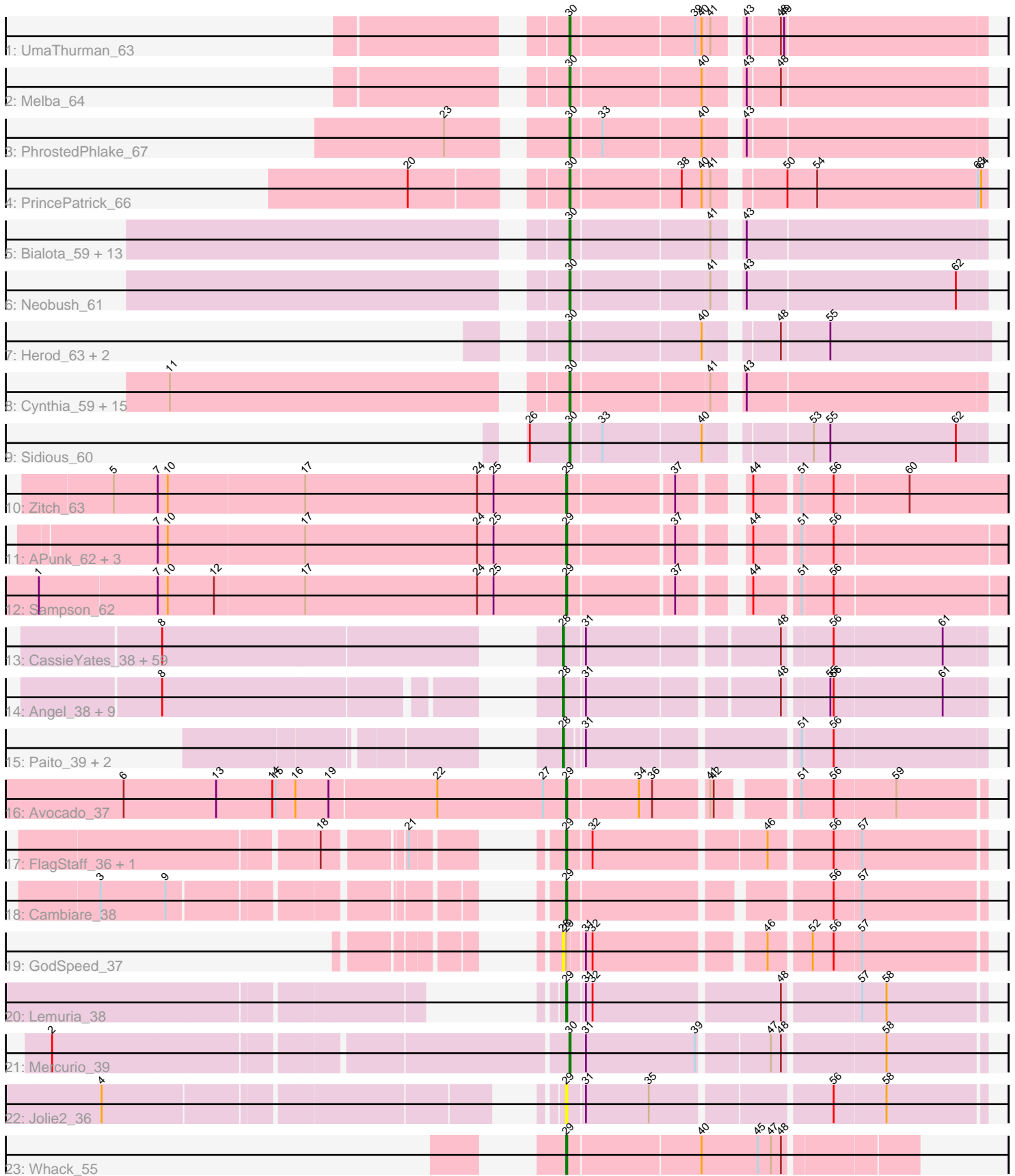


Pham 308265



Note: Tracks are now grouped by subcluster and scaled. Switching in subcluster is indicated by changes in track color. Track scale is now set by default to display the region 30 bp upstream of start 1 to 30 bp downstream of the last possible start. If this default region is judged to be packed too tightly with annotated starts, the track will be further scaled to only show that region of the ORF with annotated starts. This action will be indicated by adding "Zoomed" to the title. For starts, yellow indicates the location of called starts comprised solely of Glimmer/GeneMark auto-annotations, green indicates the location of called starts with at least 1 manual gene annotation.

Pham 308265 Report

This analysis was run 06/27/26 on database version 652.

Pham number 308265 has 127 members, 13 are drafts.

Phages represented in each track:

- Track 1 : UmaThurman_63
- Track 2 : Melba_64
- Track 3 : PhrostedPhlake_67
- Track 4 : PrincePatrick_66
- Track 5 : Bialota_59, Trumpet_61, Bosnia_60, Antonio_61, Polly_58, Eudoria_61, Manasvini_62, Pickett_54, EdnaMode_55, Suscepit_61, Tayonia_61, Zirinka_58, Kita_62, Zameen_61
- Track 6 : Neobush_61
- Track 7 : Herod_63, Hugley_61, Jalleen_60
- Track 8 : Cynthia_59, Sahara_58, Savage_59, Bjanes7_56, Yinzer_59, Ebert_63, Nettuno_55, Lamberg_55, GemG_59, Gizermo_59, Mocha12_59, Whiteclaw_59, Haley23_59, Clap_59, TueritoX_59, Sproutie_59
- Track 9 : Sidious_60
- Track 10 : Zitch_63
- Track 11 : APunk_62, BigHunkinEater_64, ViaConlectus_61, Zipp_62
- Track 12 : Sampson_62
- Track 13 : CassieYates_38, DNAIII_0037, Coleslaw_38, BruceB_38, TinaBug_38, Sweets_38, Halo_38, AzulaCat_38, Annihilator_38, ForeverHowLong_38, Kareem_38, BPs_38, Primanti_38, ShaboiShabazz_38, Jeilious_38, Phloodle_38, Neoh_38, Cherrybomb426_38, Cedasite_38, JorRay_38, DingDing_38, Aroostook_38, Jane_38, Crespo_38, Darionha_38, MZKinsey_38, Maliketh_38, Hope_38, Zombie_38, Mowgli_38, TomBrady_38, DMoney_38, ECartman_38, Chance64_38, Marmie_38, OctaviousRex_38, Camri_38, Wendigo_38, Ruriko_38, Gideon_38, BQuat_38, Phreak_38, Liefie_38, Avrafan_38, Remy19_38, AizenPogi_38, LouisV14_40, Frosty24_38, Periodt_38, CLED96_38, Renaissance_38, Gomashi_38, ZoMa_38, Jonghyun_38, PinkYoshi_38, Olga_38, Hotshotbaby7_38, Phish_38, Jolene_38, Rattrick_38
- Track 14 : Angel_38, Barkley26_38, Richarlison_38, GoldenAsh_38, Grizzly_38, Plagueis_38, Peeb_38, Kasen3_38, Schiebel_38, Sizemore_38
- Track 15 : Paito_39, Rabbs_39, Sneeze_39
- Track 16 : Avocado_37
- Track 17 : FlagStaff_36, Pace1224_36
- Track 18 : Cambiare_38
- Track 19 : GodSpeed_37
- Track 20 : Lemuria_38
- Track 21 : Mercurio_39
- Track 22 : Jolie2_36

- Track 23 : Whack_55

Summary of Final Annotations (See graph section above for start numbers):

The start number called the most often in the published annotations is 28, it was called in 66 of the 114 non-draft genes in the pham.

Genes that call this "Most Annotated" start:

- AizenPogi_38, Angel_38, Annihilator_38, Aroostook_38, Avrafan_38, AzulaCat_38, BPs_38, BQuat_38, Barkley26_38, BruceB_38, CLED96_38, Camri_38, CassieYates_38, Cedasite_38, Chance64_38, Cherrybomb426_38, Coleslaw_38, Crespo_38, DMoney_38, DNAIII_0037, Darionha_38, DingDing_38, ECartman_38, ForeverHowLong_38, Frosty24_38, Gideon_38, GodSpeed_37, GoldenAsh_38, Gomashi_38, Grizzly_38, Halo_38, Hope_38, Hotshotbaby7_38, Jane_38, Jeilious_38, Jolene_38, Jonghyun_38, JorRay_38, Kareem_38, Kasen3_38, Liefie_38, LouisV14_40, MZKinsey_38, Maliketh_38, Marmie_38, Mowgli_38, Neoh_38, OctaviousRex_38, Olga_38, Paito_39, Peeb_38, Periodt_38, Phish_38, Phloodle_38, Phreak_38, PinkYoshi_38, Plagueis_38, Primanti_38, Rabbs_39, Rattrick_38, Remy19_38, Renaissance_38, Richarlison_38, Ruriko_38, Schiebel_38, ShaboiShabazz_38, Sizemore_38, Sneeze_39, Sweets_38, TinaBug_38, TomBrady_38, Wendigo_38, ZoMa_38, Zombie_38,

Genes that have the "Most Annotated" start but do not call it:

-

Genes that do not have the "Most Annotated" start:

- APunk_62, Antonio_61, Avocado_37, Bialota_59, BigHunkinEater_64, Bjanes7_56, Bosnia_60, Cambiare_38, Clap_59, Cynthia_59, Ebert_63, EdnaMode_55, Eudoria_61, FlagStaff_36, GemG_59, Gizermo_59, Haley23_59, Herod_63, Hugley_61, Jalleen_60, Jolie2_36, Kita_62, Lamberg_55, Lemuria_38, Manasvini_62, Melba_64, Mercurio_39, Mocha12_59, Neobush_61, Nettuno_55, Pace1224_36, PhrostedPhlake_67, Pickett_54, Polly_58, PrincePatrick_66, Sahara_58, Sampson_62, Savage_59, Sidious_60, Sproutie_59, Suscepit_61, Tayonia_61, Trumpet_61, TuertoX_59, UmaThurman_63, ViaConlectus_61, Whack_55, Whiteclaw_59, Yinzer_59, Zameen_61, Zipp_62, Zirinka_58, Zitch_63,

Summary by start number:

Start 28:

- Found in 74 of 127 (58.3%) of genes in pham
- Manual Annotations of this start: 66 of 114
- Called 100.0% of time when present
- Phage (with cluster) where this start called: AizenPogi_38 (G1), Angel_38 (G1), Annihilator_38 (G1), Aroostook_38 (G1), Avrafan_38 (G1), AzulaCat_38 (G1), BPs_38 (G1), BQuat_38 (G1), Barkley26_38 (G1), BruceB_38 (G1), CLED96_38 (G1), Camri_38 (G1), CassieYates_38 (G1), Cedasite_38 (G1), Chance64_38 (G1), Cherrybomb426_38 (G1), Coleslaw_38 (G1), Crespo_38 (G1), DMoney_38 (G1), DNAIII_0037 (G1), Darionha_38 (G1), DingDing_38 (G1), ECartman_38 (G1), ForeverHowLong_38 (G1), Frosty24_38 (G1), Gideon_38 (G1), GodSpeed_37 (G2), GoldenAsh_38 (G1), Gomashi_38 (G1), Grizzly_38 (G1), Halo_38 (G1), Hope_38

(G1), Hotshotbaby7_38 (G1), Jane_38 (G1), Jeilious_38 (G), Jolene_38 (G1), Jonghyun_38 (G1), JorRay_38 (G1), Kareem_38 (G1), Kasen3_38 (G1), Liefie_38 (G1), LouisV14_40 (G1), MZKinsey_38 (G1), Maliketh_38 (G1), Marmie_38 (G1), Mowgli_38 (G1), Neoh_38 (G), OctaviousRex_38 (G1), Olga_38 (G1), Paito_39 (G1), Peeb_38 (G1), Periodt_38 (G1), Phish_38 (G1), Phloodle_38 (G1), Phreak_38 (G1), PinkYoshi_38 (G1), Plagueis_38 (G1), Primanti_38 (G1), Rabbs_39 (G1), Rattrick_38 (G1), Remy19_38 (G1), Renaissance_38 (G1), Richarlison_38 (G1), Ruriko_38 (G1), Schiebel_38 (G1), ShaboiShabazz_38 (G1), Sizemore_38 (G1), Sneeze_39 (G1), Sweets_38 (G1), TinaBug_38 (G1), TomBrady_38 (G1), Wendigo_38 (G1), ZoMa_38 (G1), Zombie_38 (G1),

Start 29:

- Found in 14 of 127 (11.0%) of genes in pham
- Manual Annotations of this start: 11 of 114
- Called 92.9% of time when present
- Phage (with cluster) where this start called: APunk_62 (DE4), Avocado_37 (G2), BigHunkinEater_64 (DE4), Cambiare_38 (G2), FlagStaff_36 (G2), Jolie2_36 (G4), Lemuria_38 (G4), Pace1224_36 (G2), Sampson_62 (DE4), ViaConlectus_61 (DE4), Whack_55 (singleton), Zipp_62 (DE4), Zitch_63 (DE4),

Start 30:

- Found in 40 of 127 (31.5%) of genes in pham
- Manual Annotations of this start: 37 of 114
- Called 100.0% of time when present
- Phage (with cluster) where this start called: Antonio_61 (CZ1), Bialota_59 (CZ1), Bjanes7_56 (CZ2), Bosnia_60 (CZ1), Clap_59 (CZ2), Cynthia_59 (CZ2), Ebert_63 (CZ2), EdnaMode_55 (CZ2), Eudoria_61 (CZ1), GemG_59 (CZ2), Gizermo_59 (CZ2), Haley23_59 (CZ2), Herod_63 (CZ1), Hugley_61 (CZ1), Jalleen_60 (CZ2), Kita_62 (CZ1), Lamberg_55 (CZ2), Manasvini_62 (CZ1), Melba_64 (CV), Mercurio_39 (G4), Mocha12_59 (CZ2), Neobush_61 (CZ1), Nettuno_55 (CZ2), PhrostedPhlake_67 (CV), Pickett_54 (CZ2), Polly_58 (CZ1), PrincePatrick_66 (CV), Sahara_58 (CZ2), Savage_59 (CZ2), Sidious_60 (CZ7), Sproutie_59 (CZ2), Suscepit_61 (CZ1), Tayonia_61 (CZ1), Trumpet_61 (CZ1), TuertoX_59 (CZ2), UmaThurman_63 (CV), Whiteclaw_59 (CZ2), Yinzer_59 (CZ2), Zameen_61 (CZ1), Zirinka_58 (CZ1),

Summary by clusters:

There are 10 clusters represented in this pham: singleton, G4, G2, G1, CZ2, CZ1, DE4, CZ7, G, CV,

Info for manual annotations of cluster CV:

- Start number 30 was manually annotated 4 times for cluster CV.

Info for manual annotations of cluster CZ1:

- Start number 30 was manually annotated 14 times for cluster CZ1.

Info for manual annotations of cluster CZ2:

- Start number 30 was manually annotated 17 times for cluster CZ2.

Info for manual annotations of cluster CZ7:

- Start number 30 was manually annotated 1 time for cluster CZ7.

Info for manual annotations of cluster DE4:

- Start number 29 was manually annotated 6 times for cluster DE4.

Info for manual annotations of cluster G:

- Start number 28 was manually annotated 1 time for cluster G.

Info for manual annotations of cluster G1:

- Start number 28 was manually annotated 65 times for cluster G1.

Info for manual annotations of cluster G2:

- Start number 29 was manually annotated 3 times for cluster G2.

Info for manual annotations of cluster G4:

- Start number 29 was manually annotated 1 time for cluster G4.
- Start number 30 was manually annotated 1 time for cluster G4.

Gene Information:

Gene: APunk_62 Start: 47932, Stop: 48282, Start Num: 29

Candidate Starts for APunk_62:

(7, 47563), (10, 47572), (17, 47695), (24, 47851), (25, 47866), (Start: 29 @47932 has 11 MA's), (37, 48022), (44, 48067), (51, 48103), (56, 48130),

Gene: AizenPogi_38 Start: 30928, Stop: 31278, Start Num: 28

Candidate Starts for AizenPogi_38:

(8, 30622), (Start: 28 @30928 has 66 MA's), (31, 30946), (48, 31105), (56, 31144), (61, 31240),

Gene: Angel_38 Start: 30913, Stop: 31263, Start Num: 28

Candidate Starts for Angel_38:

(8, 30622), (Start: 28 @30913 has 66 MA's), (31, 30931), (48, 31090), (55, 31126), (56, 31129), (61, 31225),

Gene: Annihilator_38 Start: 30919, Stop: 31269, Start Num: 28

Candidate Starts for Annihilator_38:

(8, 30613), (Start: 28 @30919 has 66 MA's), (31, 30937), (48, 31096), (56, 31135), (61, 31231),

Gene: Antonio_61 Start: 41679, Stop: 42029, Start Num: 30

Candidate Starts for Antonio_61:

(Start: 30 @41679 has 37 MA's), (41, 41799), (43, 41817),

Gene: Aroostook_38 Start: 30928, Stop: 31278, Start Num: 28

Candidate Starts for Aroostook_38:

(8, 30622), (Start: 28 @30928 has 66 MA's), (31, 30946), (48, 31105), (56, 31144), (61, 31240),

Gene: Avocado_37 Start: 31962, Stop: 32303, Start Num: 29

Candidate Starts for Avocado_37:

(6, 31563), (13, 31647), (14, 31698), (15, 31701), (16, 31719), (19, 31749), (22, 31845), (27, 31941), (Start: 29 @31962 has 11 MA's), (34, 32025), (36, 32037), (41, 32082), (42, 32085), (51, 32145), (56, 32172), (59, 32226),

Gene: Avrafan_38 Start: 30928, Stop: 31278, Start Num: 28

Candidate Starts for Avrafan_38:

(8, 30622), (Start: 28 @30928 has 66 MA's), (31, 30946), (48, 31105), (56, 31144), (61, 31240),

Gene: AzulaCat_38 Start: 30928, Stop: 31278, Start Num: 28

Candidate Starts for AzulaCat_38:

(8, 30622), (Start: 28 @30928 has 66 MA's), (31, 30946), (48, 31105), (56, 31144), (61, 31240),

Gene: BPs_38 Start: 30928, Stop: 31278, Start Num: 28

Candidate Starts for BPs_38:

(8, 30622), (Start: 28 @30928 has 66 MA's), (31, 30946), (48, 31105), (56, 31144), (61, 31240),

Gene: BQuat_38 Start: 30919, Stop: 31269, Start Num: 28

Candidate Starts for BQuat_38:

(8, 30613), (Start: 28 @30919 has 66 MA's), (31, 30937), (48, 31096), (56, 31135), (61, 31231),

Gene: Barkley26_38 Start: 30935, Stop: 31285, Start Num: 28

Candidate Starts for Barkley26_38:

(8, 30644), (Start: 28 @30935 has 66 MA's), (31, 30953), (48, 31112), (55, 31148), (56, 31151), (61, 31247),

Gene: Bialota_59 Start: 42311, Stop: 42661, Start Num: 30

Candidate Starts for Bialota_59:

(Start: 30 @42311 has 37 MA's), (41, 42431), (43, 42449),

Gene: BigHunkinEater_64 Start: 47647, Stop: 47997, Start Num: 29

Candidate Starts for BigHunkinEater_64:

(7, 47278), (10, 47287), (17, 47410), (24, 47566), (25, 47581), (Start: 29 @47647 has 11 MA's), (37, 47737), (44, 47782), (51, 47818), (56, 47845),

Gene: Bjaner7_56 Start: 38058, Stop: 38408, Start Num: 30

Candidate Starts for Bjaner7_56:

(11, 37725), (Start: 30 @38058 has 37 MA's), (41, 38178), (43, 38196),

Gene: Bosnia_60 Start: 44024, Stop: 44377, Start Num: 30

Candidate Starts for Bosnia_60:

(Start: 30 @44024 has 37 MA's), (41, 44144), (43, 44162),

Gene: BruceB_38 Start: 30928, Stop: 31278, Start Num: 28

Candidate Starts for BruceB_38:

(8, 30622), (Start: 28 @30928 has 66 MA's), (31, 30946), (48, 31105), (56, 31144), (61, 31240),

Gene: CLED96_38 Start: 30928, Stop: 31278, Start Num: 28

Candidate Starts for CLED96_38:

(8, 30622), (Start: 28 @30928 has 66 MA's), (31, 30946), (48, 31105), (56, 31144), (61, 31240),

Gene: Cambiare_38 Start: 32235, Stop: 32576, Start Num: 29

Candidate Starts for Cambiare_38:

(3, 31917), (9, 31974), (Start: 29 @32235 has 11 MA's), (56, 32445), (57, 32469),

Gene: Camri_38 Start: 30928, Stop: 31278, Start Num: 28

Candidate Starts for Camri_38:

(8, 30622), (Start: 28 @30928 has 66 MA's), (31, 30946), (48, 31105), (56, 31144), (61, 31240),

Gene: CassieYates_38 Start: 30928, Stop: 31278, Start Num: 28

Candidate Starts for CassieYates_38:

(8, 30622), (Start: 28 @30928 has 66 MA's), (31, 30946), (48, 31105), (56, 31144), (61, 31240),

Gene: Cedasite_38 Start: 30928, Stop: 31278, Start Num: 28

Candidate Starts for Cedasite_38:

(8, 30622), (Start: 28 @30928 has 66 MA's), (31, 30946), (48, 31105), (56, 31144), (61, 31240),

Gene: Chance64_38 Start: 30928, Stop: 31278, Start Num: 28

Candidate Starts for Chance64_38:

(8, 30622), (Start: 28 @30928 has 66 MA's), (31, 30946), (48, 31105), (56, 31144), (61, 31240),

Gene: Cherrybomb426_38 Start: 30928, Stop: 31278, Start Num: 28

Candidate Starts for Cherrybomb426_38:

(8, 30622), (Start: 28 @30928 has 66 MA's), (31, 30946), (48, 31105), (56, 31144), (61, 31240),

Gene: Clap_59 Start: 38237, Stop: 38587, Start Num: 30

Candidate Starts for Clap_59:

(11, 37904), (Start: 30 @38237 has 37 MA's), (41, 38357), (43, 38375),

Gene: Coleslaw_38 Start: 30919, Stop: 31269, Start Num: 28

Candidate Starts for Coleslaw_38:

(8, 30613), (Start: 28 @30919 has 66 MA's), (31, 30937), (48, 31096), (56, 31135), (61, 31231),

Gene: Crespo_38 Start: 30929, Stop: 31279, Start Num: 28

Candidate Starts for Crespo_38:

(8, 30623), (Start: 28 @30929 has 66 MA's), (31, 30947), (48, 31106), (56, 31145), (61, 31241),

Gene: Cynthia_59 Start: 38235, Stop: 38585, Start Num: 30

Candidate Starts for Cynthia_59:

(11, 37902), (Start: 30 @38235 has 37 MA's), (41, 38355), (43, 38373),

Gene: DMoney_38 Start: 30928, Stop: 31278, Start Num: 28

Candidate Starts for DMoney_38:

(8, 30622), (Start: 28 @30928 has 66 MA's), (31, 30946), (48, 31105), (56, 31144), (61, 31240),

Gene: DNAIII_0037 Start: 29562, Stop: 29912, Start Num: 28

Candidate Starts for DNAIII_0037:

(8, 29256), (Start: 28 @29562 has 66 MA's), (31, 29580), (48, 29739), (56, 29778), (61, 29874),

Gene: Darionha_38 Start: 30928, Stop: 31278, Start Num: 28

Candidate Starts for Darionha_38:

(8, 30622), (Start: 28 @30928 has 66 MA's), (31, 30946), (48, 31105), (56, 31144), (61, 31240),

Gene: DingDing_38 Start: 30928, Stop: 31278, Start Num: 28

Candidate Starts for DingDing_38:

(8, 30622), (Start: 28 @30928 has 66 MA's), (31, 30946), (48, 31105), (56, 31144), (61, 31240),

Gene: ECartman_38 Start: 30928, Stop: 31278, Start Num: 28

Candidate Starts for ECartman_38:

(8, 30622), (Start: 28 @30928 has 66 MA's), (31, 30946), (48, 31105), (56, 31144), (61, 31240),

Gene: Ebert_63 Start: 38669, Stop: 39019, Start Num: 30

Candidate Starts for Ebert_63:

(11, 38336), (Start: 30 @38669 has 37 MA's), (41, 38789), (43, 38807),

Gene: EdnaMode_55 Start: 37500, Stop: 37850, Start Num: 30

Candidate Starts for EdnaMode_55:

(Start: 30 @37500 has 37 MA's), (41, 37620), (43, 37638),

Gene: Eudoria_61 Start: 41679, Stop: 42029, Start Num: 30

Candidate Starts for Eudoria_61:

(Start: 30 @41679 has 37 MA's), (41, 41799), (43, 41817),

Gene: FlagStaff_36 Start: 31381, Stop: 31731, Start Num: 29

Candidate Starts for FlagStaff_36:

(18, 31243), (21, 31306), (Start: 29 @31381 has 11 MA's), (32, 31402), (46, 31549), (56, 31600), (57, 31624),

Gene: ForeverHowLong_38 Start: 30923, Stop: 31273, Start Num: 28

Candidate Starts for ForeverHowLong_38:

(8, 30617), (Start: 28 @30923 has 66 MA's), (31, 30941), (48, 31100), (56, 31139), (61, 31235),

Gene: Frosty24_38 Start: 30928, Stop: 31278, Start Num: 28

Candidate Starts for Frosty24_38:

(8, 30622), (Start: 28 @30928 has 66 MA's), (31, 30946), (48, 31105), (56, 31144), (61, 31240),

Gene: GemG_59 Start: 38241, Stop: 38591, Start Num: 30

Candidate Starts for GemG_59:

(11, 37908), (Start: 30 @38241 has 37 MA's), (41, 38361), (43, 38379),

Gene: Gideon_38 Start: 30928, Stop: 31278, Start Num: 28

Candidate Starts for Gideon_38:

(8, 30622), (Start: 28 @30928 has 66 MA's), (31, 30946), (48, 31105), (56, 31144), (61, 31240),

Gene: Gizermo_59 Start: 38237, Stop: 38587, Start Num: 30

Candidate Starts for Gizermo_59:

(11, 37904), (Start: 30 @38237 has 37 MA's), (41, 38357), (43, 38375),

Gene: GodSpeed_37 Start: 31493, Stop: 31834, Start Num: 28

Candidate Starts for GodSpeed_37:

(Start: 28 @31493 has 66 MA's), (Start: 29 @31496 has 11 MA's), (31, 31508), (32, 31514), (46, 31652), (52, 31685), (56, 31703), (57, 31727),

Gene: GoldenAsh_38 Start: 30913, Stop: 31263, Start Num: 28

Candidate Starts for GoldenAsh_38:

(8, 30622), (Start: 28 @30913 has 66 MA's), (31, 30931), (48, 31090), (55, 31126), (56, 31129), (61, 31225),

Gene: Gomashi_38 Start: 30929, Stop: 31279, Start Num: 28

Candidate Starts for Gomashi_38:

(8, 30623), (Start: 28 @30929 has 66 MA's), (31, 30947), (48, 31106), (56, 31145), (61, 31241),

Gene: Grizzly_38 Start: 30913, Stop: 31263, Start Num: 28

Candidate Starts for Grizzly_38:

(8, 30622), (Start: 28 @30913 has 66 MA's), (31, 30931), (48, 31090), (55, 31126), (56, 31129), (61, 31225),

Gene: Haley23_59 Start: 38237, Stop: 38587, Start Num: 30
Candidate Starts for Haley23_59:
(11, 37904), (Start: 30 @38237 has 37 MA's), (41, 38357), (43, 38375),

Gene: Halo_38 Start: 30923, Stop: 31273, Start Num: 28
Candidate Starts for Halo_38:
(8, 30617), (Start: 28 @30923 has 66 MA's), (31, 30941), (48, 31100), (56, 31139), (61, 31235),

Gene: Herod_63 Start: 44381, Stop: 44731, Start Num: 30
Candidate Starts for Herod_63:
(Start: 30 @44381 has 37 MA's), (40, 44495), (48, 44546), (55, 44588),

Gene: Hope_38 Start: 30928, Stop: 31278, Start Num: 28
Candidate Starts for Hope_38:
(8, 30622), (Start: 28 @30928 has 66 MA's), (31, 30946), (48, 31105), (56, 31144), (61, 31240),

Gene: Hotshotbaby7_38 Start: 30928, Stop: 31278, Start Num: 28
Candidate Starts for Hotshotbaby7_38:
(8, 30622), (Start: 28 @30928 has 66 MA's), (31, 30946), (48, 31105), (56, 31144), (61, 31240),

Gene: Hugley_61 Start: 44361, Stop: 44711, Start Num: 30
Candidate Starts for Hugley_61:
(Start: 30 @44361 has 37 MA's), (40, 44475), (48, 44526), (55, 44568),

Gene: Jalleen_60 Start: 38199, Stop: 38549, Start Num: 30
Candidate Starts for Jalleen_60:
(Start: 30 @38199 has 37 MA's), (40, 38313), (48, 38364), (55, 38406),

Gene: Jane_38 Start: 30928, Stop: 31278, Start Num: 28
Candidate Starts for Jane_38:
(8, 30622), (Start: 28 @30928 has 66 MA's), (31, 30946), (48, 31105), (56, 31144), (61, 31240),

Gene: Jeilious_38 Start: 30927, Stop: 31277, Start Num: 28
Candidate Starts for Jeilious_38:
(8, 30621), (Start: 28 @30927 has 66 MA's), (31, 30945), (48, 31104), (56, 31143), (61, 31239),

Gene: Jolene_38 Start: 30928, Stop: 31278, Start Num: 28
Candidate Starts for Jolene_38:
(8, 30622), (Start: 28 @30928 has 66 MA's), (31, 30946), (48, 31105), (56, 31144), (61, 31240),

Gene: Jolie2_36 Start: 30322, Stop: 30672, Start Num: 29
Candidate Starts for Jolie2_36:
(4, 29977), (Start: 29 @30322 has 11 MA's), (31, 30337), (35, 30394), (56, 30541), (58, 30586),

Gene: Jonghyun_38 Start: 30928, Stop: 31278, Start Num: 28
Candidate Starts for Jonghyun_38:
(8, 30622), (Start: 28 @30928 has 66 MA's), (31, 30946), (48, 31105), (56, 31144), (61, 31240),

Gene: JorRay_38 Start: 30928, Stop: 31278, Start Num: 28
Candidate Starts for JorRay_38:
(8, 30622), (Start: 28 @30928 has 66 MA's), (31, 30946), (48, 31105), (56, 31144), (61, 31240),

Gene: Kareem_38 Start: 30928, Stop: 31278, Start Num: 28
Candidate Starts for Kareem_38:
(8, 30622), (Start: 28 @30928 has 66 MA's), (31, 30946), (48, 31105), (56, 31144), (61, 31240),

Gene: Kasen3_38 Start: 30914, Stop: 31264, Start Num: 28
Candidate Starts for Kasen3_38:
(8, 30623), (Start: 28 @30914 has 66 MA's), (31, 30932), (48, 31091), (55, 31127), (56, 31130), (61, 31226),

Gene: Kita_62 Start: 41688, Stop: 42038, Start Num: 30
Candidate Starts for Kita_62:
(Start: 30 @41688 has 37 MA's), (41, 41808), (43, 41826),

Gene: Lamberg_55 Start: 36746, Stop: 37096, Start Num: 30
Candidate Starts for Lamberg_55:
(11, 36413), (Start: 30 @36746 has 37 MA's), (41, 36866), (43, 36884),

Gene: Lemuria_38 Start: 31664, Stop: 32017, Start Num: 29
Candidate Starts for Lemuria_38:
(Start: 29 @31664 has 11 MA's), (31, 31679), (32, 31685), (48, 31847), (57, 31910), (58, 31931),

Gene: Liefie_38 Start: 30926, Stop: 31276, Start Num: 28
Candidate Starts for Liefie_38:
(8, 30620), (Start: 28 @30926 has 66 MA's), (31, 30944), (48, 31103), (56, 31142), (61, 31238),

Gene: LouisV14_40 Start: 33193, Stop: 33543, Start Num: 28
Candidate Starts for LouisV14_40:
(8, 32887), (Start: 28 @33193 has 66 MA's), (31, 33211), (48, 33370), (56, 33409), (61, 33505),

Gene: MZKinsey_38 Start: 30928, Stop: 31278, Start Num: 28
Candidate Starts for MZKinsey_38:
(8, 30622), (Start: 28 @30928 has 66 MA's), (31, 30946), (48, 31105), (56, 31144), (61, 31240),

Gene: Maliketh_38 Start: 30928, Stop: 31278, Start Num: 28
Candidate Starts for Maliketh_38:
(8, 30622), (Start: 28 @30928 has 66 MA's), (31, 30946), (48, 31105), (56, 31144), (61, 31240),

Gene: Manasvini_62 Start: 41703, Stop: 42053, Start Num: 30
Candidate Starts for Manasvini_62:
(Start: 30 @41703 has 37 MA's), (41, 41823), (43, 41841),

Gene: Marmie_38 Start: 30928, Stop: 31278, Start Num: 28
Candidate Starts for Marmie_38:
(8, 30622), (Start: 28 @30928 has 66 MA's), (31, 30946), (48, 31105), (56, 31144), (61, 31240),

Gene: Melba_64 Start: 40839, Stop: 41186, Start Num: 30
Candidate Starts for Melba_64:
(Start: 30 @40839 has 37 MA's), (40, 40953), (43, 40977), (48, 41004),

Gene: Mercurio_39 Start: 32164, Stop: 32514, Start Num: 30
Candidate Starts for Mercurio_39:
(2, 31726), (Start: 30 @32164 has 37 MA's), (31, 32179), (39, 32278), (47, 32335), (48, 32344), (58, 32428),

Gene: Mocha12_59 Start: 38237, Stop: 38587, Start Num: 30
Candidate Starts for Mocha12_59:
(11, 37904), (Start: 30 @38237 has 37 MA's), (41, 38357), (43, 38375),

Gene: Mowgli_38 Start: 30928, Stop: 31278, Start Num: 28
Candidate Starts for Mowgli_38:
(8, 30622), (Start: 28 @30928 has 66 MA's), (31, 30946), (48, 31105), (56, 31144), (61, 31240),

Gene: Neobush_61 Start: 41673, Stop: 42023, Start Num: 30
Candidate Starts for Neobush_61:
(Start: 30 @41673 has 37 MA's), (41, 41793), (43, 41811), (62, 41997),

Gene: Neoh_38 Start: 30920, Stop: 31270, Start Num: 28
Candidate Starts for Neoh_38:
(8, 30614), (Start: 28 @30920 has 66 MA's), (31, 30938), (48, 31097), (56, 31136), (61, 31232),

Gene: Nettuno_55 Start: 36746, Stop: 37096, Start Num: 30
Candidate Starts for Nettuno_55:
(11, 36413), (Start: 30 @36746 has 37 MA's), (41, 36866), (43, 36884),

Gene: OctaviousRex_38 Start: 30928, Stop: 31278, Start Num: 28
Candidate Starts for OctaviousRex_38:
(8, 30622), (Start: 28 @30928 has 66 MA's), (31, 30946), (48, 31105), (56, 31144), (61, 31240),

Gene: Olga_38 Start: 30928, Stop: 31278, Start Num: 28
Candidate Starts for Olga_38:
(8, 30622), (Start: 28 @30928 has 66 MA's), (31, 30946), (48, 31105), (56, 31144), (61, 31240),

Gene: Pace1224_36 Start: 31381, Stop: 31731, Start Num: 29
Candidate Starts for Pace1224_36:
(18, 31243), (21, 31306), (Start: 29 @31381 has 11 MA's), (32, 31402), (46, 31549), (56, 31600), (57, 31624),

Gene: Paito_39 Start: 31261, Stop: 31614, Start Num: 28
Candidate Starts for Paito_39:
(Start: 28 @31261 has 66 MA's), (31, 31276), (51, 31453), (56, 31480),

Gene: Peeb_38 Start: 30913, Stop: 31263, Start Num: 28
Candidate Starts for Peeb_38:
(8, 30622), (Start: 28 @30913 has 66 MA's), (31, 30931), (48, 31090), (55, 31126), (56, 31129), (61, 31225),

Gene: Periodt_38 Start: 30919, Stop: 31269, Start Num: 28
Candidate Starts for Periodt_38:
(8, 30613), (Start: 28 @30919 has 66 MA's), (31, 30937), (48, 31096), (56, 31135), (61, 31231),

Gene: Phish_38 Start: 30928, Stop: 31278, Start Num: 28
Candidate Starts for Phish_38:
(8, 30622), (Start: 28 @30928 has 66 MA's), (31, 30946), (48, 31105), (56, 31144), (61, 31240),

Gene: Phloodle_38 Start: 30928, Stop: 31278, Start Num: 28
Candidate Starts for Phloodle_38:

(8, 30622), (Start: 28 @30928 has 66 MA's), (31, 30946), (48, 31105), (56, 31144), (61, 31240),

Gene: Phreak_38 Start: 30928, Stop: 31278, Start Num: 28

Candidate Starts for Phreak_38:

(8, 30622), (Start: 28 @30928 has 66 MA's), (31, 30946), (48, 31105), (56, 31144), (61, 31240),

Gene: PhrostedPhlake_67 Start: 41454, Stop: 41801, Start Num: 30

Candidate Starts for PhrostedPhlake_67:

(23, 41370), (Start: 30 @41454 has 37 MA's), (33, 41481), (40, 41568), (43, 41592),

Gene: Pickett_54 Start: 35976, Stop: 36326, Start Num: 30

Candidate Starts for Pickett_54:

(Start: 30 @35976 has 37 MA's), (41, 36096), (43, 36114),

Gene: PinkYoshi_38 Start: 30919, Stop: 31269, Start Num: 28

Candidate Starts for PinkYoshi_38:

(8, 30613), (Start: 28 @30919 has 66 MA's), (31, 30937), (48, 31096), (56, 31135), (61, 31231),

Gene: Plagueis_38 Start: 30748, Stop: 31098, Start Num: 28

Candidate Starts for Plagueis_38:

(8, 30457), (Start: 28 @30748 has 66 MA's), (31, 30766), (48, 30925), (55, 30961), (56, 30964), (61, 31060),

Gene: Polly_58 Start: 41122, Stop: 41472, Start Num: 30

Candidate Starts for Polly_58:

(Start: 30 @41122 has 37 MA's), (41, 41242), (43, 41260),

Gene: Primanti_38 Start: 30928, Stop: 31278, Start Num: 28

Candidate Starts for Primanti_38:

(8, 30622), (Start: 28 @30928 has 66 MA's), (31, 30946), (48, 31105), (56, 31144), (61, 31240),

Gene: PrincePatrick_66 Start: 41403, Stop: 41753, Start Num: 30

Candidate Starts for PrincePatrick_66:

(20, 41289), (Start: 30 @41403 has 37 MA's), (38, 41499), (40, 41517), (41, 41523), (50, 41574), (54, 41601), (63, 41745), (64, 41748),

Gene: Rabbs_39 Start: 31163, Stop: 31516, Start Num: 28

Candidate Starts for Rabbs_39:

(Start: 28 @31163 has 66 MA's), (31, 31178), (51, 31355), (56, 31382),

Gene: Rattrick_38 Start: 30919, Stop: 31269, Start Num: 28

Candidate Starts for Rattrick_38:

(8, 30613), (Start: 28 @30919 has 66 MA's), (31, 30937), (48, 31096), (56, 31135), (61, 31231),

Gene: Remy19_38 Start: 30928, Stop: 31278, Start Num: 28

Candidate Starts for Remy19_38:

(8, 30622), (Start: 28 @30928 has 66 MA's), (31, 30946), (48, 31105), (56, 31144), (61, 31240),

Gene: Renaissance_38 Start: 30928, Stop: 31278, Start Num: 28

Candidate Starts for Renaissance_38:

(8, 30622), (Start: 28 @30928 has 66 MA's), (31, 30946), (48, 31105), (56, 31144), (61, 31240),

Gene: Richarlison_38 Start: 30913, Stop: 31263, Start Num: 28

Candidate Starts for Richarlison_38:

(8, 30622), (Start: 28 @30913 has 66 MA's), (31, 30931), (48, 31090), (55, 31126), (56, 31129), (61, 31225),

Gene: Ruriko_38 Start: 30928, Stop: 31278, Start Num: 28

Candidate Starts for Ruriko_38:

(8, 30622), (Start: 28 @30928 has 66 MA's), (31, 30946), (48, 31105), (56, 31144), (61, 31240),

Gene: Sahara_58 Start: 37984, Stop: 38334, Start Num: 30

Candidate Starts for Sahara_58:

(11, 37651), (Start: 30 @37984 has 37 MA's), (41, 38104), (43, 38122),

Gene: Sampson_62 Start: 48244, Stop: 48594, Start Num: 29

Candidate Starts for Sampson_62:

(1, 47770), (7, 47875), (10, 47884), (12, 47926), (17, 48007), (24, 48163), (25, 48178), (Start: 29 @48244 has 11 MA's), (37, 48334), (44, 48379), (51, 48415), (56, 48442),

Gene: Savage_59 Start: 38237, Stop: 38587, Start Num: 30

Candidate Starts for Savage_59:

(11, 37904), (Start: 30 @38237 has 37 MA's), (41, 38357), (43, 38375),

Gene: Schiebel_38 Start: 30913, Stop: 31263, Start Num: 28

Candidate Starts for Schiebel_38:

(8, 30622), (Start: 28 @30913 has 66 MA's), (31, 30931), (48, 31090), (55, 31126), (56, 31129), (61, 31225),

Gene: ShaboiShabazz_38 Start: 30928, Stop: 31278, Start Num: 28

Candidate Starts for ShaboiShabazz_38:

(8, 30622), (Start: 28 @30928 has 66 MA's), (31, 30946), (48, 31105), (56, 31144), (61, 31240),

Gene: Sidious_60 Start: 42842, Stop: 43189, Start Num: 30

Candidate Starts for Sidious_60:

(26, 42806), (Start: 30 @42842 has 37 MA's), (33, 42869), (40, 42956), (53, 43034), (55, 43049), (62, 43163),

Gene: Sizemore_38 Start: 30914, Stop: 31264, Start Num: 28

Candidate Starts for Sizemore_38:

(8, 30623), (Start: 28 @30914 has 66 MA's), (31, 30932), (48, 31091), (55, 31127), (56, 31130), (61, 31226),

Gene: Sneeze_39 Start: 31162, Stop: 31515, Start Num: 28

Candidate Starts for Sneeze_39:

(Start: 28 @31162 has 66 MA's), (31, 31177), (51, 31354), (56, 31381),

Gene: Sproutie_59 Start: 38237, Stop: 38587, Start Num: 30

Candidate Starts for Sproutie_59:

(11, 37904), (Start: 30 @38237 has 37 MA's), (41, 38357), (43, 38375),

Gene: Suscepit_61 Start: 41680, Stop: 42030, Start Num: 30

Candidate Starts for Suscepit_61:

(Start: 30 @41680 has 37 MA's), (41, 41800), (43, 41818),

Gene: Sweets_38 Start: 30923, Stop: 31273, Start Num: 28

Candidate Starts for Sweets_38:
(8, 30617), (Start: 28 @30923 has 66 MA's), (31, 30941), (48, 31100), (56, 31139), (61, 31235),

Gene: Tayonia_61 Start: 41679, Stop: 42029, Start Num: 30
Candidate Starts for Tayonia_61:
(Start: 30 @41679 has 37 MA's), (41, 41799), (43, 41817),

Gene: TinaBug_38 Start: 30923, Stop: 31273, Start Num: 28
Candidate Starts for TinaBug_38:
(8, 30617), (Start: 28 @30923 has 66 MA's), (31, 30941), (48, 31100), (56, 31139), (61, 31235),

Gene: TomBrady_38 Start: 30929, Stop: 31279, Start Num: 28
Candidate Starts for TomBrady_38:
(8, 30623), (Start: 28 @30929 has 66 MA's), (31, 30947), (48, 31106), (56, 31145), (61, 31241),

Gene: Trumpet_61 Start: 41680, Stop: 42030, Start Num: 30
Candidate Starts for Trumpet_61:
(Start: 30 @41680 has 37 MA's), (41, 41800), (43, 41818),

Gene: TuertoX_59 Start: 38237, Stop: 38587, Start Num: 30
Candidate Starts for TuertoX_59:
(11, 37904), (Start: 30 @38237 has 37 MA's), (41, 38357), (43, 38375),

Gene: UmaThurman_63 Start: 41482, Stop: 41829, Start Num: 30
Candidate Starts for UmaThurman_63:
(Start: 30 @41482 has 37 MA's), (39, 41590), (40, 41596), (41, 41602), (43, 41620), (48, 41647), (49, 41650),

Gene: ViaConlectus_61 Start: 47075, Stop: 47425, Start Num: 29
Candidate Starts for ViaConlectus_61:
(7, 46706), (10, 46715), (17, 46838), (24, 46994), (25, 47009), (Start: 29 @47075 has 11 MA's), (37, 47165), (44, 47210), (51, 47246), (56, 47273),

Gene: Wendigo_38 Start: 30928, Stop: 31278, Start Num: 28
Candidate Starts for Wendigo_38:
(8, 30622), (Start: 28 @30928 has 66 MA's), (31, 30946), (48, 31105), (56, 31144), (61, 31240),

Gene: Whack_55 Start: 38005, Stop: 38304, Start Num: 29
Candidate Starts for Whack_55:
(Start: 29 @38005 has 11 MA's), (40, 38122), (45, 38173), (47, 38185), (48, 38194),

Gene: Whiteclaw_59 Start: 38237, Stop: 38587, Start Num: 30
Candidate Starts for Whiteclaw_59:
(11, 37904), (Start: 30 @38237 has 37 MA's), (41, 38357), (43, 38375),

Gene: Yinzer_59 Start: 38237, Stop: 38587, Start Num: 30
Candidate Starts for Yinzer_59:
(11, 37904), (Start: 30 @38237 has 37 MA's), (41, 38357), (43, 38375),

Gene: Zameen_61 Start: 41679, Stop: 42029, Start Num: 30
Candidate Starts for Zameen_61:
(Start: 30 @41679 has 37 MA's), (41, 41799), (43, 41817),

Gene: Zipp_62 Start: 49073, Stop: 49423, Start Num: 29

Candidate Starts for Zipp_62:

(7, 48704), (10, 48713), (17, 48836), (24, 48992), (25, 49007), (Start: 29 @49073 has 11 MA's), (37, 49163), (44, 49208), (51, 49244), (56, 49271),

Gene: Zirinka_58 Start: 42299, Stop: 42649, Start Num: 30

Candidate Starts for Zirinka_58:

(Start: 30 @42299 has 37 MA's), (41, 42419), (43, 42437),

Gene: Zitch_63 Start: 47293, Stop: 47646, Start Num: 29

Candidate Starts for Zitch_63:

(5, 46885), (7, 46924), (10, 46933), (17, 47056), (24, 47212), (25, 47227), (Start: 29 @47293 has 11 MA's), (37, 47383), (44, 47428), (51, 47464), (56, 47491), (60, 47557),

Gene: ZoMa_38 Start: 30928, Stop: 31278, Start Num: 28

Candidate Starts for ZoMa_38:

(8, 30622), (Start: 28 @30928 has 66 MA's), (31, 30946), (48, 31105), (56, 31144), (61, 31240),

Gene: Zombie_38 Start: 30928, Stop: 31278, Start Num: 28

Candidate Starts for Zombie_38:

(8, 30622), (Start: 28 @30928 has 66 MA's), (31, 30946), (48, 31105), (56, 31144), (61, 31240),