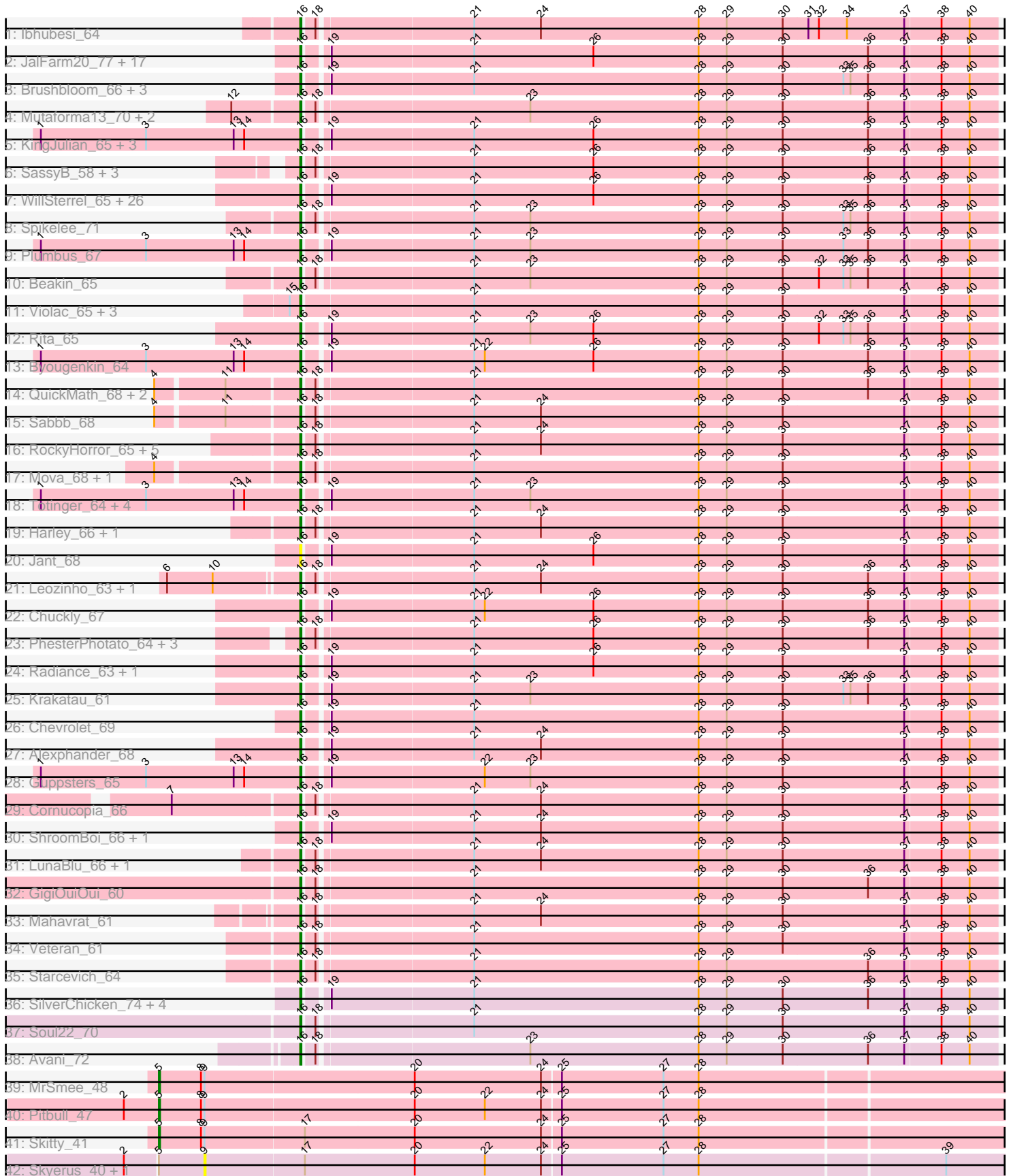


Pham 308277



Note: Tracks are now grouped by subcluster and scaled. Switching in subcluster is indicated by changes in track color. Track scale is now set by default to display the region 30 bp upstream of start 1 to 30 bp downstream of the last possible start. If this default region is judged to be packed too tightly with annotated starts, the track will be further scaled to only show that region of the ORF with annotated starts. This action will be indicated by adding "Zoomed" to the title. For starts, yellow indicates the location of called starts comprised solely of Glimmer/GeneMark auto-annotations, green indicates the location of called starts with at least 1 manual gene annotation.

Pham 308277 Report

This analysis was run 06/27/26 on database version 652.

Pham number 308277 has 124 members, 12 are drafts.

Phages represented in each track:

- Track 1 : Ibhubesi_64
- Track 2 : JalFarm20_77, Strokeseat_60, Juice456_65, Melissauren88_62, Ovechkin_64, Hamulus_64, KristaRAM_67, Florinda_75, Girafales_72, Shauna1_62, DotProduct_59, Fruitloop_60, StAnnes_62, IMpilo_60, Hlubikazi_60, Quico_72, Okabe_59, Mandlovu_60
- Track 3 : Brushbloom_66, Batiatus_62, Bobi_68, MilleniumForce_67
- Track 4 : Mutaforma13_70, EleanorGeorge_66, Firehouse51_67
- Track 5 : KingJulian_65, PatoPoderoso_62, Ms6_61, Corium_62
- Track 6 : SassyB_58, Phalconet_62, DLane_59, PopTart_58
- Track 7 : WillSterrel_65, SiSi_62, Ardmore_56, Donkeykong_67, Ramsey_63, SG4_61, UncleRicky_63, Doomphist_64, Bubbles123_60, XFactor_62, Poenanya_64, Spartacus_66, Dante_65, Lij_60, DirtMcgirt_63, IrishSherpFalk_65, Seagreen_63, Lucia_63, Enby_65, Lorde_64, Boomer_69, Phatniss_62, PMC_61, Rockne_65, Drago_61, Tweety_64, Flathead_65
- Track 8 : Spikelee_71
- Track 9 : Plumbus_67
- Track 10 : Beakin_65
- Track 11 : Violac_65, Eish_67, DaWorst_64, Rialto_69
- Track 12 : Rita_65
- Track 13 : Byougenkin_64
- Track 14 : QuickMath_68, Kimberlium_69, MulchExplorer_68
- Track 15 : Sabbb_68
- Track 16 : RockyHorror_65, Zerg_64, Girr_62, Ruby_60, MisterCuddles_62, Doug_66
- Track 17 : Mova_68, Madiba_65
- Track 18 : Totinger_64, Emmaloid_66, Peridot_66, LittleShirley_64, Slim_66
- Track 19 : Harley_66, Beanstalk_63
- Track 20 : Jant_68
- Track 21 : Leozinho_63, DosHalletts_66
- Track 22 : Chuckly_67
- Track 23 : PhesterPhotato_64, Filuzino_62, Akhila_55, MilanaBonita_54
- Track 24 : Radiance_63, OwlsT2W_64
- Track 25 : Krakatau_61
- Track 26 : Chevrolet_69
- Track 27 : Alexphander_68
- Track 28 : Guppsters_65
- Track 29 : Cornucopia_66

- Track 30 : ShroomBoi_66, Hades_65
- Track 31 : LunaBlu_66, Galactic_63
- Track 32 : GigiOuiOui_60
- Track 33 : Mahavrat_61
- Track 34 : Veteran_61
- Track 35 : Starcevich_64
- Track 36 : SilverChicken_74, TDanisky_71, ArcusAngelus_66, Sparkdehlily_71, Phanphagia_60
- Track 37 : Soul22_70
- Track 38 : Avani_72
- Track 39 : MrSmee_48
- Track 40 : Pitbull_47
- Track 41 : Skitty_41
- Track 42 : Skyerus_40, Raya_45

Summary of Final Annotations (See graph section above for start numbers):

The start number called the most often in the published annotations is 16, it was called in 109 of the 112 non-draft genes in the pham.

Genes that call this "Most Annotated" start:

- Akhila_55, Alexphander_68, ArcusAngelus_66, Ardmore_56, Avani_72, Batiatus_62, Beakin_65, Beanstalk_63, Bobi_68, Boomer_69, Brushbloom_66, Bubbles123_60, Byougenkin_64, Chevrolet_69, Chuckly_67, Corium_62, Cornucopia_66, DLane_59, DaWorst_64, Dante_65, DirtMcgirt_63, Donkeykong_67, Doomphist_64, DosHalletts_66, DotProduct_59, Doug_66, Drago_61, Eish_67, EleanorGeorge_66, Emmaloid_66, Enby_65, Filuzino_62, Firehouse51_67, Flathead_65, Florinda_75, Fruitloop_60, Galactic_63, GigiOuiOui_60, Girafales_72, Girr_62, Guppsters_65, Hades_65, Hamulus_64, Harley_66, Hlubikazi_60, IMpilo_60, Ihubesi_64, IrishSherpFalk_65, JalFarm20_77, Jant_68, Juice456_65, Kimberlium_69, KingJulian_65, Krakatau_61, KristaRAM_67, Leozinho_63, LittleShirley_64, Llij_60, Lorde_64, Lucia_63, LunaBlu_66, Madiba_65, Mahavrat_61, Mandlovu_60, Melissauren88_62, MilanaBonita_54, MilleniumForce_67, MisterCuddles_62, Mova_68, Ms6_61, MulchExplorer_68, Mutaforma13_70, Okabe_59, Ovechkin_64, OwlsT2W_64, PMC_61, PatoPoderoso_62, Peridot_66, Phalconet_62, Phanphagia_60, Phatniss_62, PhesterPhotato_64, Plumbus_67, Poenanya_64, PopTart_58, QuickMath_68, Quico_72, Radiance_63, Ramsey_63, Rialto_69, Rita_65, Rockne_65, RockyHorror_65, Ruby_60, SG4_61, Sabbb_68, SassyB_58, Seagreen_63, Shauna1_62, ShroomBoi_66, SiSi_62, SilverChicken_74, Slim_66, Soul22_70, Sparkdehlily_71, Spartacus_66, Spikelee_71, StAnnes_62, Starcevich_64, Strokeseat_60, TDanisky_71, Totinger_64, Tweety_64, UncleRicky_63, Veteran_61, Violac_65, WillSterrel_65, XFactor_62, Zerg_64,

Genes that have the "Most Annotated" start but do not call it:

-

Genes that do not have the "Most Annotated" start:

- MrSmee_48, Pitbull_47, Raya_45, Skitty_41, Skyerus_40,

Summary by start number:

Start 5:

- Found in 5 of 124 (4.0%) of genes in pham
- Manual Annotations of this start: 3 of 112
- Called 60.0% of time when present
- Phage (with cluster) where this start called: MrSmee_48 (FQ1), Pitbull_47 (FQ1), Skitty_41 (FQ1),

Start 9:

- Found in 5 of 124 (4.0%) of genes in pham
- No Manual Annotations of this start.
- Called 40.0% of time when present
- Phage (with cluster) where this start called: Raya_45 (FQ2), Skyerus_40 (FQ2),

Start 16:

- Found in 119 of 124 (96.0%) of genes in pham
- Manual Annotations of this start: 109 of 112
- Called 100.0% of time when present
- Phage (with cluster) where this start called: Akhila_55 (F1), Alexphander_68 (F1), ArcusAngelus_66 (F1), Ardmore_56 (F1), Avani_72 (F2), Batiatus_62 (F1), Beakin_65 (F1), Beanstalk_63 (F1), Bobi_68 (F1), Boomer_69 (F1), Brushbloom_66 (F1), Bubbles123_60 (F1), Byougenkin_64 (F1), Chevrolet_69 (F1), Chuckly_67 (F1), Corium_62 (F1), Cornucopia_66 (F1), DLane_59 (F1), DaWorst_64 (F1), Dante_65 (F1), DirtMcgirt_63 (F1), Donkeykong_67 (F1), Doomphist_64 (F1), DosHalletts_66 (F1), DotProduct_59 (F1), Doug_66 (F1), Drago_61 (F1), Eish_67 (F1), EleanorGeorge_66 (F1), Emmaloid_66 (F1), Enby_65 (F1), Filuzino_62 (F1), Firehouse51_67 (F1), Flathead_65 (F1), Florinda_75 (F1), Fruitloop_60 (F1), Galactic_63 (F1), GigiOuiOui_60 (F1), Girafales_72 (F1), Girr_62 (F1), Guppsters_65 (F1), Hades_65 (F1), Hamulus_64 (F1), Harley_66 (F1), Hlubikazi_60 (F1), IMpilo_60 (F1), Ibhubesi_64 (F1), IrishSherpFalk_65 (F1), JalFarm20_77 (F1), Jant_68 (F1), Juice456_65 (F1), Kimberlium_69 (F1), KingJulian_65 (F1), Krakatau_61 (F1), KristaRAM_67 (F1), Leozinho_63 (F1), LittleShirley_64 (F1), Llij_60 (F1), Lorde_64 (F1), Lucia_63 (F1), LunaBlu_66 (F1), Madiba_65 (F1), Mahavrat_61 (F1), Mandlovu_60 (F1), Melissauren88_62 (F1), MilanaBonita_54 (F1), MilleniumForce_67 (F1), MisterCuddles_62 (F1), Mova_68 (F1), Ms6_61 (F1), MulchExplorer_68 (F1), Mutaforma13_70 (F1), Okabe_59 (F8), Ovechkin_64 (F1), OwlsT2W_64 (F1), PMC_61 (F1), PatoPoderoso_62 (F1), Peridot_66 (F1), Phalconet_62 (F1), Phanphagia_60 (F1), Phatniss_62 (F1), PhesterPotato_64 (F1), Plumbus_67 (F1), Poenanya_64 (F1), PopTart_58 (F1), QuickMath_68 (F1), Quico_72 (F1), Radiance_63 (F1), Ramsey_63 (F1), Rialto_69 (F1), Rita_65 (F1), Rockne_65 (F1), RockyHorror_65 (F1), Ruby_60 (F1), SG4_61 (F1), Sabbb_68 (F1), SassyB_58 (F1), Seagreen_63 (F1), Shauna1_62 (F1), ShroomBoi_66 (F1), SiSi_62 (F1), SilverChicken_74 (F2), Slim_66 (F1), Soul22_70 (F2), Sparkdehlily_71 (F1), Spartacus_66 (F1), Spikelee_71 (F1), StAnnes_62 (F1), Starcevich_64 (F1), Strokeseat_60 (F1), TDanisky_71 (F1), Totinger_64 (F1), Tweety_64 (F1), UncleRicky_63 (F1), Veteran_61 (F1), Violac_65 (F1), WillSterrel_65 (F1), XFactor_62 (F1), Zerg_64 (F1),

Summary by clusters:

There are 5 clusters represented in this pham: FQ2, F1, F2, FQ1, F8,

Info for manual annotations of cluster F1:

- Start number 16 was manually annotated 107 times for cluster F1.

Info for manual annotations of cluster F2:

- Start number 16 was manually annotated 2 times for cluster F2.

Info for manual annotations of cluster FQ1:

- Start number 5 was manually annotated 3 times for cluster FQ1.

Gene Information:

Gene: Akhila_55 Start: 37373, Stop: 37951, Start Num: 16

Candidate Starts for Akhila_55:

(Start: 16 @37373 has 109 MA's), (18, 37382), (21, 37508), (26, 37610), (28, 37700), (29, 37724), (30, 37772), (36, 37844), (37, 37874), (38, 37904), (40, 37928),

Gene: Alexphander_68 Start: 41707, Stop: 42285, Start Num: 16

Candidate Starts for Alexphander_68:

(Start: 16 @41707 has 109 MA's), (19, 41722), (21, 41842), (24, 41899), (28, 42034), (29, 42058), (30, 42106), (37, 42208), (38, 42238), (40, 42262),

Gene: ArcusAngelus_66 Start: 42057, Stop: 42635, Start Num: 16

Candidate Starts for ArcusAngelus_66:

(Start: 16 @42057 has 109 MA's), (19, 42072), (21, 42192), (28, 42384), (29, 42408), (30, 42456), (36, 42528), (37, 42558), (38, 42588), (40, 42612),

Gene: Ardmore_56 Start: 39474, Stop: 40052, Start Num: 16

Candidate Starts for Ardmore_56:

(Start: 16 @39474 has 109 MA's), (19, 39489), (21, 39609), (26, 39711), (28, 39801), (29, 39825), (30, 39873), (36, 39945), (37, 39975), (38, 40005), (40, 40029),

Gene: Avani_72 Start: 42091, Stop: 42669, Start Num: 16

Candidate Starts for Avani_72:

(Start: 16 @42091 has 109 MA's), (18, 42100), (23, 42274), (28, 42418), (29, 42442), (30, 42490), (36, 42562), (37, 42592), (38, 42622), (40, 42646),

Gene: Batiatus_62 Start: 41350, Stop: 41928, Start Num: 16

Candidate Starts for Batiatus_62:

(Start: 16 @41350 has 109 MA's), (19, 41365), (21, 41485), (28, 41677), (29, 41701), (30, 41749), (33, 41800), (35, 41806), (36, 41821), (37, 41851), (38, 41881), (40, 41905),

Gene: Beakin_65 Start: 40654, Stop: 41232, Start Num: 16

Candidate Starts for Beakin_65:

(Start: 16 @40654 has 109 MA's), (18, 40663), (21, 40789), (23, 40837), (28, 40981), (29, 41005), (30, 41053), (32, 41083), (33, 41104), (35, 41110), (36, 41125), (37, 41155), (38, 41185), (40, 41209),

Gene: Beanstalk_63 Start: 40105, Stop: 40683, Start Num: 16

Candidate Starts for Beanstalk_63:

(Start: 16 @40105 has 109 MA's), (18, 40114), (21, 40240), (24, 40297), (28, 40432), (29, 40456), (30, 40504), (37, 40606), (38, 40636), (40, 40660),

Gene: Bobi_68 Start: 42953, Stop: 43531, Start Num: 16

Candidate Starts for Bobi_68:

(Start: 16 @42953 has 109 MA's), (19, 42968), (21, 43088), (28, 43280), (29, 43304), (30, 43352), (33, 43403), (35, 43409), (36, 43424), (37, 43454), (38, 43484), (40, 43508),

Gene: Boomer_69 Start: 43611, Stop: 44189, Start Num: 16

Candidate Starts for Boomer_69:

(Start: 16 @43611 has 109 MA's), (19, 43626), (21, 43746), (26, 43848), (28, 43938), (29, 43962), (30, 44010), (36, 44082), (37, 44112), (38, 44142), (40, 44166),

Gene: Brushbloom_66 Start: 42282, Stop: 42860, Start Num: 16

Candidate Starts for Brushbloom_66:

(Start: 16 @42282 has 109 MA's), (19, 42297), (21, 42417), (28, 42609), (29, 42633), (30, 42681), (33, 42732), (35, 42738), (36, 42753), (37, 42783), (38, 42813), (40, 42837),

Gene: Bubbles123_60 Start: 41257, Stop: 41835, Start Num: 16

Candidate Starts for Bubbles123_60:

(Start: 16 @41257 has 109 MA's), (19, 41272), (21, 41392), (26, 41494), (28, 41584), (29, 41608), (30, 41656), (36, 41728), (37, 41758), (38, 41788), (40, 41812),

Gene: Byougenkin_64 Start: 41613, Stop: 42191, Start Num: 16

Candidate Starts for Byougenkin_64:

(1, 41391), (3, 41481), (13, 41556), (14, 41565), (Start: 16 @41613 has 109 MA's), (19, 41628), (21, 41748), (22, 41757), (26, 41850), (28, 41940), (29, 41964), (30, 42012), (36, 42084), (37, 42114), (38, 42144), (40, 42168),

Gene: Chevrolet_69 Start: 42058, Stop: 42636, Start Num: 16

Candidate Starts for Chevrolet_69:

(Start: 16 @42058 has 109 MA's), (19, 42073), (21, 42193), (28, 42385), (29, 42409), (30, 42457), (37, 42559), (38, 42589), (40, 42613),

Gene: Chuckly_67 Start: 42080, Stop: 42658, Start Num: 16

Candidate Starts for Chuckly_67:

(Start: 16 @42080 has 109 MA's), (19, 42095), (21, 42215), (22, 42224), (26, 42317), (28, 42407), (29, 42431), (30, 42479), (36, 42551), (37, 42581), (38, 42611), (40, 42635),

Gene: Corium_62 Start: 40905, Stop: 41483, Start Num: 16

Candidate Starts for Corium_62:

(1, 40683), (3, 40773), (13, 40848), (14, 40857), (Start: 16 @40905 has 109 MA's), (19, 40920), (21, 41040), (26, 41142), (28, 41232), (29, 41256), (30, 41304), (36, 41376), (37, 41406), (38, 41436), (40, 41460),

Gene: Cornucopia_66 Start: 42004, Stop: 42582, Start Num: 16

Candidate Starts for Cornucopia_66:

(7, 41902), (Start: 16 @42004 has 109 MA's), (18, 42013), (21, 42139), (24, 42196), (28, 42331), (29, 42355), (30, 42403), (37, 42505), (38, 42535), (40, 42559),

Gene: DLane_59 Start: 39980, Stop: 40558, Start Num: 16

Candidate Starts for DLane_59:

(Start: 16 @39980 has 109 MA's), (18, 39989), (21, 40115), (26, 40217), (28, 40307), (29, 40331), (30, 40379), (36, 40451), (37, 40481), (38, 40511), (40, 40535),

Gene: DaWorst_64 Start: 41441, Stop: 42025, Start Num: 16

Candidate Starts for DaWorst_64:

(15, 41432), (Start: 16 @41441 has 109 MA's), (21, 41582), (28, 41774), (29, 41798), (30, 41846), (37, 41948), (38, 41978), (40, 42002),

Gene: Dante_65 Start: 41221, Stop: 41799, Start Num: 16

Candidate Starts for Dante_65:

(Start: 16 @41221 has 109 MA's), (19, 41236), (21, 41356), (26, 41458), (28, 41548), (29, 41572), (30, 41620), (36, 41692), (37, 41722), (38, 41752), (40, 41776),

Gene: DirtMcgirt_63 Start: 39979, Stop: 40557, Start Num: 16

Candidate Starts for DirtMcgirt_63:

(Start: 16 @39979 has 109 MA's), (19, 39994), (21, 40114), (26, 40216), (28, 40306), (29, 40330), (30, 40378), (36, 40450), (37, 40480), (38, 40510), (40, 40534),

Gene: Donkeykong_67 Start: 43893, Stop: 44471, Start Num: 16

Candidate Starts for Donkeykong_67:

(Start: 16 @43893 has 109 MA's), (19, 43908), (21, 44028), (26, 44130), (28, 44220), (29, 44244), (30, 44292), (36, 44364), (37, 44394), (38, 44424), (40, 44448),

Gene: Doomphist_64 Start: 42388, Stop: 42966, Start Num: 16

Candidate Starts for Doomphist_64:

(Start: 16 @42388 has 109 MA's), (19, 42403), (21, 42523), (26, 42625), (28, 42715), (29, 42739), (30, 42787), (36, 42859), (37, 42889), (38, 42919), (40, 42943),

Gene: DosHalletts_66 Start: 42728, Stop: 43306, Start Num: 16

Candidate Starts for DosHalletts_66:

(6, 42623), (10, 42662), (Start: 16 @42728 has 109 MA's), (18, 42737), (21, 42863), (24, 42920), (28, 43055), (29, 43079), (30, 43127), (36, 43199), (37, 43229), (38, 43259), (40, 43283),

Gene: DotProduct_59 Start: 40227, Stop: 40805, Start Num: 16

Candidate Starts for DotProduct_59:

(Start: 16 @40227 has 109 MA's), (19, 40242), (21, 40362), (26, 40464), (28, 40554), (29, 40578), (30, 40626), (36, 40698), (37, 40728), (38, 40758), (40, 40782),

Gene: Doug_66 Start: 42060, Stop: 42638, Start Num: 16

Candidate Starts for Doug_66:

(Start: 16 @42060 has 109 MA's), (18, 42069), (21, 42195), (24, 42252), (28, 42387), (29, 42411), (30, 42459), (37, 42561), (38, 42591), (40, 42615),

Gene: Drago_61 Start: 39982, Stop: 40560, Start Num: 16

Candidate Starts for Drago_61:

(Start: 16 @39982 has 109 MA's), (19, 39997), (21, 40117), (26, 40219), (28, 40309), (29, 40333), (30, 40381), (36, 40453), (37, 40483), (38, 40513), (40, 40537),

Gene: Eish_67 Start: 41956, Stop: 42540, Start Num: 16

Candidate Starts for Eish_67:

(15, 41947), (Start: 16 @41956 has 109 MA's), (21, 42097), (28, 42289), (29, 42313), (30, 42361), (37, 42463), (38, 42493), (40, 42517),

Gene: EleanorGeorge_66 Start: 42742, Stop: 43320, Start Num: 16

Candidate Starts for EleanorGeorge_66:

(12, 42688), (Start: 16 @42742 has 109 MA's), (18, 42751), (23, 42925), (28, 43069), (29, 43093), (30, 43141), (36, 43213), (37, 43243), (38, 43273), (40, 43297),

Gene: Emmaloid_66 Start: 42487, Stop: 43065, Start Num: 16

Candidate Starts for Emmaloid_66:

(1, 42265), (3, 42355), (13, 42430), (14, 42439), (Start: 16 @42487 has 109 MA's), (19, 42502), (21, 42622), (23, 42670), (28, 42814), (29, 42838), (30, 42886), (37, 42988), (38, 43018), (40, 43042),

Gene: Enby_65 Start: 40258, Stop: 40836, Start Num: 16

Candidate Starts for Enby_65:

(Start: 16 @40258 has 109 MA's), (19, 40273), (21, 40393), (26, 40495), (28, 40585), (29, 40609), (30, 40657), (36, 40729), (37, 40759), (38, 40789), (40, 40813),

Gene: Filuzino_62 Start: 40285, Stop: 40863, Start Num: 16

Candidate Starts for Filuzino_62:

(Start: 16 @40285 has 109 MA's), (18, 40294), (21, 40420), (26, 40522), (28, 40612), (29, 40636), (30, 40684), (36, 40756), (37, 40786), (38, 40816), (40, 40840),

Gene: Firehouse51_67 Start: 45788, Stop: 46366, Start Num: 16

Candidate Starts for Firehouse51_67:

(12, 45734), (Start: 16 @45788 has 109 MA's), (18, 45797), (23, 45971), (28, 46115), (29, 46139), (30, 46187), (36, 46259), (37, 46289), (38, 46319), (40, 46343),

Gene: Flathead_65 Start: 41939, Stop: 42517, Start Num: 16

Candidate Starts for Flathead_65:

(Start: 16 @41939 has 109 MA's), (19, 41954), (21, 42074), (26, 42176), (28, 42266), (29, 42290), (30, 42338), (36, 42410), (37, 42440), (38, 42470), (40, 42494),

Gene: Florinda_75 Start: 43399, Stop: 43977, Start Num: 16

Candidate Starts for Florinda_75:

(Start: 16 @43399 has 109 MA's), (19, 43414), (21, 43534), (26, 43636), (28, 43726), (29, 43750), (30, 43798), (36, 43870), (37, 43900), (38, 43930), (40, 43954),

Gene: Fruitloop_60 Start: 41616, Stop: 42194, Start Num: 16

Candidate Starts for Fruitloop_60:

(Start: 16 @41616 has 109 MA's), (19, 41631), (21, 41751), (26, 41853), (28, 41943), (29, 41967), (30, 42015), (36, 42087), (37, 42117), (38, 42147), (40, 42171),

Gene: Galactic_63 Start: 41258, Stop: 41836, Start Num: 16

Candidate Starts for Galactic_63:

(Start: 16 @41258 has 109 MA's), (18, 41267), (21, 41393), (24, 41450), (28, 41585), (29, 41609), (30, 41657), (37, 41759), (38, 41789), (40, 41813),

Gene: GigiOuiOui_60 Start: 40247, Stop: 40825, Start Num: 16

Candidate Starts for GigiOuiOui_60:

(Start: 16 @40247 has 109 MA's), (18, 40256), (21, 40382), (28, 40574), (29, 40598), (30, 40646), (36, 40718), (37, 40748), (38, 40778), (40, 40802),

Gene: Girafales_72 Start: 43190, Stop: 43768, Start Num: 16

Candidate Starts for Girafales_72:

(Start: 16 @43190 has 109 MA's), (19, 43205), (21, 43325), (26, 43427), (28, 43517), (29, 43541), (30, 43589), (36, 43661), (37, 43691), (38, 43721), (40, 43745),

Gene: Girr_62 Start: 41117, Stop: 41695, Start Num: 16

Candidate Starts for Girr_62:

(Start: 16 @41117 has 109 MA's), (18, 41126), (21, 41252), (24, 41309), (28, 41444), (29, 41468), (30, 41516), (37, 41618), (38, 41648), (40, 41672),

Gene: Guppsters_65 Start: 41402, Stop: 41980, Start Num: 16

Candidate Starts for Guppsters_65:

(1, 41180), (3, 41270), (13, 41345), (14, 41354), (Start: 16 @41402 has 109 MA's), (19, 41417), (22, 41546), (23, 41585), (28, 41729), (29, 41753), (30, 41801), (37, 41903), (38, 41933), (40, 41957),

Gene: Hades_65 Start: 42117, Stop: 42695, Start Num: 16

Candidate Starts for Hades_65:

(Start: 16 @42117 has 109 MA's), (19, 42132), (21, 42252), (24, 42309), (28, 42444), (29, 42468), (30, 42516), (37, 42618), (38, 42648), (40, 42672),

Gene: Hamulus_64 Start: 41759, Stop: 42337, Start Num: 16

Candidate Starts for Hamulus_64:

(Start: 16 @41759 has 109 MA's), (19, 41774), (21, 41894), (26, 41996), (28, 42086), (29, 42110), (30, 42158), (36, 42230), (37, 42260), (38, 42290), (40, 42314),

Gene: Harley_66 Start: 42366, Stop: 42944, Start Num: 16

Candidate Starts for Harley_66:

(Start: 16 @42366 has 109 MA's), (18, 42375), (21, 42501), (24, 42558), (28, 42693), (29, 42717), (30, 42765), (37, 42867), (38, 42897), (40, 42921),

Gene: Hlubikazi_60 Start: 39337, Stop: 39915, Start Num: 16

Candidate Starts for Hlubikazi_60:

(Start: 16 @39337 has 109 MA's), (19, 39352), (21, 39472), (26, 39574), (28, 39664), (29, 39688), (30, 39736), (36, 39808), (37, 39838), (38, 39868), (40, 39892),

Gene: IMpilo_60 Start: 39388, Stop: 39966, Start Num: 16

Candidate Starts for IMpilo_60:

(Start: 16 @39388 has 109 MA's), (19, 39403), (21, 39523), (26, 39625), (28, 39715), (29, 39739), (30, 39787), (36, 39859), (37, 39889), (38, 39919), (40, 39943),

Gene: Ibhubesi_64 Start: 41382, Stop: 41960, Start Num: 16

Candidate Starts for Ibhubesi_64:

(Start: 16 @41382 has 109 MA's), (18, 41391), (21, 41517), (24, 41574), (28, 41709), (29, 41733), (30, 41781), (31, 41802), (32, 41811), (34, 41835), (37, 41883), (38, 41913), (40, 41937),

Gene: IrishSherpFalk_65 Start: 42972, Stop: 43550, Start Num: 16

Candidate Starts for IrishSherpFalk_65:

(Start: 16 @42972 has 109 MA's), (19, 42987), (21, 43107), (26, 43209), (28, 43299), (29, 43323), (30, 43371), (36, 43443), (37, 43473), (38, 43503), (40, 43527),

Gene: JalFarm20_77 Start: 45441, Stop: 46019, Start Num: 16

Candidate Starts for JalFarm20_77:

(Start: 16 @45441 has 109 MA's), (19, 45456), (21, 45576), (26, 45678), (28, 45768), (29, 45792), (30, 45840), (36, 45912), (37, 45942), (38, 45972), (40, 45996),

Gene: Jant_68 Start: 43019, Stop: 43597, Start Num: 16

Candidate Starts for Jant_68:

(Start: 16 @43019 has 109 MA's), (19, 43034), (21, 43154), (26, 43256), (28, 43346), (29, 43370), (30, 43418), (37, 43520), (38, 43550), (40, 43574),

Gene: Juice456_65 Start: 43397, Stop: 43975, Start Num: 16

Candidate Starts for Juice456_65:

(Start: 16 @43397 has 109 MA's), (19, 43412), (21, 43532), (26, 43634), (28, 43724), (29, 43748), (30, 43796), (36, 43868), (37, 43898), (38, 43928), (40, 43952),

Gene: Kimberlium_69 Start: 43678, Stop: 44256, Start Num: 16

Candidate Starts for Kimberlium_69:

(4, 43567), (11, 43621), (Start: 16 @43678 has 109 MA's), (18, 43687), (21, 43813), (28, 44005), (29, 44029), (30, 44077), (36, 44149), (37, 44179), (38, 44209), (40, 44233),

Gene: KingJulian_65 Start: 40905, Stop: 41483, Start Num: 16

Candidate Starts for KingJulian_65:

(1, 40683), (3, 40773), (13, 40848), (14, 40857), (Start: 16 @40905 has 109 MA's), (19, 40920), (21, 41040), (26, 41142), (28, 41232), (29, 41256), (30, 41304), (36, 41376), (37, 41406), (38, 41436), (40, 41460),

Gene: Krakatau_61 Start: 40570, Stop: 41148, Start Num: 16

Candidate Starts for Krakatau_61:

(Start: 16 @40570 has 109 MA's), (19, 40585), (21, 40705), (23, 40753), (28, 40897), (29, 40921), (30, 40969), (33, 41020), (35, 41026), (36, 41041), (37, 41071), (38, 41101), (40, 41125),

Gene: KristaRAM_67 Start: 43766, Stop: 44344, Start Num: 16

Candidate Starts for KristaRAM_67:

(Start: 16 @43766 has 109 MA's), (19, 43781), (21, 43901), (26, 44003), (28, 44093), (29, 44117), (30, 44165), (36, 44237), (37, 44267), (38, 44297), (40, 44321),

Gene: Leozinho_63 Start: 40576, Stop: 41154, Start Num: 16

Candidate Starts for Leozinho_63:

(6, 40471), (10, 40510), (Start: 16 @40576 has 109 MA's), (18, 40585), (21, 40711), (24, 40768), (28, 40903), (29, 40927), (30, 40975), (36, 41047), (37, 41077), (38, 41107), (40, 41131),

Gene: LittleShirley_64 Start: 42218, Stop: 42796, Start Num: 16

Candidate Starts for LittleShirley_64:

(1, 41996), (3, 42086), (13, 42161), (14, 42170), (Start: 16 @42218 has 109 MA's), (19, 42233), (21, 42353), (23, 42401), (28, 42545), (29, 42569), (30, 42617), (37, 42719), (38, 42749), (40, 42773),

Gene: Llij_60 Start: 40136, Stop: 40714, Start Num: 16

Candidate Starts for Llij_60:

(Start: 16 @40136 has 109 MA's), (19, 40151), (21, 40271), (26, 40373), (28, 40463), (29, 40487), (30, 40535), (36, 40607), (37, 40637), (38, 40667), (40, 40691),

Gene: Lorde_64 Start: 39423, Stop: 40001, Start Num: 16

Candidate Starts for Lorde_64:

(Start: 16 @39423 has 109 MA's), (19, 39438), (21, 39558), (26, 39660), (28, 39750), (29, 39774), (30, 39822), (36, 39894), (37, 39924), (38, 39954), (40, 39978),

Gene: Lucia_63 Start: 40256, Stop: 40834, Start Num: 16

Candidate Starts for Lucia_63:

(Start: 16 @40256 has 109 MA's), (19, 40271), (21, 40391), (26, 40493), (28, 40583), (29, 40607), (30, 40655), (36, 40727), (37, 40757), (38, 40787), (40, 40811),

Gene: LunaBlu_66 Start: 41917, Stop: 42495, Start Num: 16

Candidate Starts for LunaBlu_66:

(Start: 16 @41917 has 109 MA's), (18, 41926), (21, 42052), (24, 42109), (28, 42244), (29, 42268), (30, 42316), (37, 42418), (38, 42448), (40, 42472),

Gene: Madiba_65 Start: 41150, Stop: 41728, Start Num: 16

Candidate Starts for Madiba_65:

(4, 41039), (Start: 16 @41150 has 109 MA's), (18, 41159), (21, 41285), (28, 41477), (29, 41501), (30, 41549), (37, 41651), (38, 41681), (40, 41705),

Gene: Mahavrat_61 Start: 40856, Stop: 41434, Start Num: 16

Candidate Starts for Mahavrat_61:

(Start: 16 @40856 has 109 MA's), (18, 40865), (21, 40991), (24, 41048), (28, 41183), (29, 41207), (30, 41255), (37, 41357), (38, 41387), (40, 41411),

Gene: Mandlovu_60 Start: 39279, Stop: 39857, Start Num: 16

Candidate Starts for Mandlovu_60:

(Start: 16 @39279 has 109 MA's), (19, 39294), (21, 39414), (26, 39516), (28, 39606), (29, 39630), (30, 39678), (36, 39750), (37, 39780), (38, 39810), (40, 39834),

Gene: Melissauren88_62 Start: 40797, Stop: 41375, Start Num: 16

Candidate Starts for Melissauren88_62:

(Start: 16 @40797 has 109 MA's), (19, 40812), (21, 40932), (26, 41034), (28, 41124), (29, 41148), (30, 41196), (36, 41268), (37, 41298), (38, 41328), (40, 41352),

Gene: MilanaBonita_54 Start: 37373, Stop: 37951, Start Num: 16

Candidate Starts for MilanaBonita_54:

(Start: 16 @37373 has 109 MA's), (18, 37382), (21, 37508), (26, 37610), (28, 37700), (29, 37724), (30, 37772), (36, 37844), (37, 37874), (38, 37904), (40, 37928),

Gene: MilleniumForce_67 Start: 43485, Stop: 44063, Start Num: 16

Candidate Starts for MilleniumForce_67:

(Start: 16 @43485 has 109 MA's), (19, 43500), (21, 43620), (28, 43812), (29, 43836), (30, 43884), (33, 43935), (35, 43941), (36, 43956), (37, 43986), (38, 44016), (40, 44040),

Gene: MisterCuddles_62 Start: 41117, Stop: 41695, Start Num: 16

Candidate Starts for MisterCuddles_62:

(Start: 16 @41117 has 109 MA's), (18, 41126), (21, 41252), (24, 41309), (28, 41444), (29, 41468), (30, 41516), (37, 41618), (38, 41648), (40, 41672),

Gene: Mova_68 Start: 41654, Stop: 42232, Start Num: 16

Candidate Starts for Mova_68:

(4, 41543), (Start: 16 @41654 has 109 MA's), (18, 41663), (21, 41789), (28, 41981), (29, 42005), (30, 42053), (37, 42155), (38, 42185), (40, 42209),

Gene: MrSmee_48 Start: 29337, Stop: 30098, Start Num: 5

Candidate Starts for MrSmee_48:

(Start: 5 @29337 has 3 MA's), (8, 29373), (9, 29376), (20, 29553), (24, 29661), (25, 29676), (27, 29763), (28, 29793),

Gene: Ms6_61 Start: 37162, Stop: 37740, Start Num: 16

Candidate Starts for Ms6_61:

(1, 36940), (3, 37030), (13, 37105), (14, 37114), (Start: 16 @37162 has 109 MA's), (19, 37177), (21, 37297), (26, 37399), (28, 37489), (29, 37513), (30, 37561), (36, 37633), (37, 37663), (38, 37693), (40, 37717),

Gene: MulchExplorer_68 Start: 43677, Stop: 44255, Start Num: 16

Candidate Starts for MulchExplorer_68:

(4, 43566), (11, 43620), (Start: 16 @43677 has 109 MA's), (18, 43686), (21, 43812), (28, 44004), (29, 44028), (30, 44076), (36, 44148), (37, 44178), (38, 44208), (40, 44232),

Gene: Mutaforma13_70 Start: 45098, Stop: 45676, Start Num: 16

Candidate Starts for Mutaforma13_70:

(12, 45044), (Start: 16 @45098 has 109 MA's), (18, 45107), (23, 45281), (28, 45425), (29, 45449), (30, 45497), (36, 45569), (37, 45599), (38, 45629), (40, 45653),

Gene: Okabe_59 Start: 37710, Stop: 38288, Start Num: 16

Candidate Starts for Okabe_59:

(Start: 16 @37710 has 109 MA's), (19, 37725), (21, 37845), (26, 37947), (28, 38037), (29, 38061), (30, 38109), (36, 38181), (37, 38211), (38, 38241), (40, 38265),

Gene: Ovechkin_64 Start: 42113, Stop: 42691, Start Num: 16

Candidate Starts for Ovechkin_64:

(Start: 16 @42113 has 109 MA's), (19, 42128), (21, 42248), (26, 42350), (28, 42440), (29, 42464), (30, 42512), (36, 42584), (37, 42614), (38, 42644), (40, 42668),

Gene: OwlsT2W_64 Start: 41445, Stop: 42023, Start Num: 16

Candidate Starts for OwlsT2W_64:

(Start: 16 @41445 has 109 MA's), (19, 41460), (21, 41580), (26, 41682), (28, 41772), (29, 41796), (30, 41844), (37, 41946), (38, 41976), (40, 42000),

Gene: PMC_61 Start: 41835, Stop: 42413, Start Num: 16

Candidate Starts for PMC_61:

(Start: 16 @41835 has 109 MA's), (19, 41850), (21, 41970), (26, 42072), (28, 42162), (29, 42186), (30, 42234), (36, 42306), (37, 42336), (38, 42366), (40, 42390),

Gene: PatoPoderoso_62 Start: 40905, Stop: 41483, Start Num: 16

Candidate Starts for PatoPoderoso_62:

(1, 40683), (3, 40773), (13, 40848), (14, 40857), (Start: 16 @40905 has 109 MA's), (19, 40920), (21, 41040), (26, 41142), (28, 41232), (29, 41256), (30, 41304), (36, 41376), (37, 41406), (38, 41436), (40, 41460),

Gene: Peridot_66 Start: 41137, Stop: 41715, Start Num: 16

Candidate Starts for Peridot_66:

(1, 40915), (3, 41005), (13, 41080), (14, 41089), (Start: 16 @41137 has 109 MA's), (19, 41152), (21, 41272), (23, 41320), (28, 41464), (29, 41488), (30, 41536), (37, 41638), (38, 41668), (40, 41692),

Gene: Phalconet_62 Start: 40048, Stop: 40626, Start Num: 16

Candidate Starts for Phalconet_62:

(Start: 16 @40048 has 109 MA's), (18, 40057), (21, 40183), (26, 40285), (28, 40375), (29, 40399), (30, 40447), (36, 40519), (37, 40549), (38, 40579), (40, 40603),

Gene: Phanphagia_60 Start: 41659, Stop: 42237, Start Num: 16

Candidate Starts for Phanphagia_60:

(Start: 16 @41659 has 109 MA's), (19, 41674), (21, 41794), (28, 41986), (29, 42010), (30, 42058), (36, 42130), (37, 42160), (38, 42190), (40, 42214),

Gene: Phatniss_62 Start: 41231, Stop: 41809, Start Num: 16

Candidate Starts for Phatniss_62:

(Start: 16 @41231 has 109 MA's), (19, 41246), (21, 41366), (26, 41468), (28, 41558), (29, 41582), (30, 41630), (36, 41702), (37, 41732), (38, 41762), (40, 41786),

Gene: PhesterPhotato_64 Start: 40868, Stop: 41446, Start Num: 16

Candidate Starts for PhesterPhotato_64:

(Start: 16 @40868 has 109 MA's), (18, 40877), (21, 41003), (26, 41105), (28, 41195), (29, 41219), (30, 41267), (36, 41339), (37, 41369), (38, 41399), (40, 41423),

Gene: Pitbull_47 Start: 27673, Stop: 28434, Start Num: 5

Candidate Starts for Pitbull_47:

(2, 27643), (Start: 5 @27673 has 3 MA's), (8, 27709), (9, 27712), (20, 27889), (22, 27949), (24, 27997), (25, 28012), (27, 28099), (28, 28129),

Gene: Plumbus_67 Start: 41998, Stop: 42576, Start Num: 16

Candidate Starts for Plumbus_67:

(1, 41776), (3, 41866), (13, 41941), (14, 41950), (Start: 16 @41998 has 109 MA's), (19, 42013), (21, 42133), (23, 42181), (28, 42325), (29, 42349), (30, 42397), (33, 42448), (36, 42469), (37, 42499), (38, 42529), (40, 42553),

Gene: Poenanya_64 Start: 42388, Stop: 42966, Start Num: 16

Candidate Starts for Poenanya_64:

(Start: 16 @42388 has 109 MA's), (19, 42403), (21, 42523), (26, 42625), (28, 42715), (29, 42739), (30, 42787), (36, 42859), (37, 42889), (38, 42919), (40, 42943),

Gene: PopTart_58 Start: 39673, Stop: 40251, Start Num: 16

Candidate Starts for PopTart_58:

(Start: 16 @39673 has 109 MA's), (18, 39682), (21, 39808), (26, 39910), (28, 40000), (29, 40024), (30, 40072), (36, 40144), (37, 40174), (38, 40204), (40, 40228),

Gene: QuickMath_68 Start: 43901, Stop: 44479, Start Num: 16

Candidate Starts for QuickMath_68:

(4, 43790), (11, 43844), (Start: 16 @43901 has 109 MA's), (18, 43910), (21, 44036), (28, 44228), (29, 44252), (30, 44300), (36, 44372), (37, 44402), (38, 44432), (40, 44456),

Gene: Quico_72 Start: 43219, Stop: 43797, Start Num: 16

Candidate Starts for Quico_72:

(Start: 16 @43219 has 109 MA's), (19, 43234), (21, 43354), (26, 43456), (28, 43546), (29, 43570), (30, 43618), (36, 43690), (37, 43720), (38, 43750), (40, 43774),

Gene: Radiance_63 Start: 41326, Stop: 41904, Start Num: 16

Candidate Starts for Radiance_63:

(Start: 16 @41326 has 109 MA's), (19, 41341), (21, 41461), (26, 41563), (28, 41653), (29, 41677), (30, 41725), (37, 41827), (38, 41857), (40, 41881),

Gene: Ramsey_63 Start: 41639, Stop: 42217, Start Num: 16

Candidate Starts for Ramsey_63:

(Start: 16 @41639 has 109 MA's), (19, 41654), (21, 41774), (26, 41876), (28, 41966), (29, 41990), (30, 42038), (36, 42110), (37, 42140), (38, 42170), (40, 42194),

Gene: Raya_45 Start: 27877, Stop: 28599, Start Num: 9

Candidate Starts for Raya_45:

(2, 27811), (Start: 5 @27838 has 3 MA's), (9, 27877), (17, 27961), (20, 28054), (22, 28114), (24, 28162), (25, 28177), (27, 28264), (28, 28294), (39, 28498),

Gene: Rialto_69 Start: 43854, Stop: 44438, Start Num: 16

Candidate Starts for Rialto_69:

(15, 43845), (Start: 16 @43854 has 109 MA's), (21, 43995), (28, 44187), (29, 44211), (30, 44259), (37, 44361), (38, 44391), (40, 44415),

Gene: Rita_65 Start: 39938, Stop: 40516, Start Num: 16

Candidate Starts for Rita_65:

(Start: 16 @39938 has 109 MA's), (19, 39953), (21, 40073), (23, 40121), (26, 40175), (28, 40265), (29, 40289), (30, 40337), (32, 40367), (33, 40388), (35, 40394), (36, 40409), (37, 40439), (38, 40469), (40, 40493),

Gene: Rockne_65 Start: 41847, Stop: 42425, Start Num: 16

Candidate Starts for Rockne_65:

(Start: 16 @41847 has 109 MA's), (19, 41862), (21, 41982), (26, 42084), (28, 42174), (29, 42198), (30, 42246), (36, 42318), (37, 42348), (38, 42378), (40, 42402),

Gene: RockyHorror_65 Start: 40989, Stop: 41567, Start Num: 16

Candidate Starts for RockyHorror_65:

(Start: 16 @40989 has 109 MA's), (18, 40998), (21, 41124), (24, 41181), (28, 41316), (29, 41340), (30, 41388), (37, 41490), (38, 41520), (40, 41544),

Gene: Ruby_60 Start: 41118, Stop: 41696, Start Num: 16

Candidate Starts for Ruby_60:

(Start: 16 @41118 has 109 MA's), (18, 41127), (21, 41253), (24, 41310), (28, 41445), (29, 41469), (30, 41517), (37, 41619), (38, 41649), (40, 41673),

Gene: SG4_61 Start: 40725, Stop: 41303, Start Num: 16

Candidate Starts for SG4_61:

(Start: 16 @40725 has 109 MA's), (19, 40740), (21, 40860), (26, 40962), (28, 41052), (29, 41076), (30, 41124), (36, 41196), (37, 41226), (38, 41256), (40, 41280),

Gene: Sabbb_68 Start: 42259, Stop: 42837, Start Num: 16

Candidate Starts for Sabbb_68:

(4, 42148), (11, 42202), (Start: 16 @42259 has 109 MA's), (18, 42268), (21, 42394), (24, 42451), (28, 42586), (29, 42610), (30, 42658), (37, 42760), (38, 42790), (40, 42814),

Gene: SassyB_58 Start: 39673, Stop: 40251, Start Num: 16

Candidate Starts for SassyB_58:

(Start: 16 @39673 has 109 MA's), (18, 39682), (21, 39808), (26, 39910), (28, 40000), (29, 40024), (30, 40072), (36, 40144), (37, 40174), (38, 40204), (40, 40228),

Gene: Seagreen_63 Start: 41028, Stop: 41606, Start Num: 16

Candidate Starts for Seagreen_63:

(Start: 16 @41028 has 109 MA's), (19, 41043), (21, 41163), (26, 41265), (28, 41355), (29, 41379), (30, 41427), (36, 41499), (37, 41529), (38, 41559), (40, 41583),

Gene: Shauna1_62 Start: 41568, Stop: 42146, Start Num: 16

Candidate Starts for Shauna1_62:

(Start: 16 @41568 has 109 MA's), (19, 41583), (21, 41703), (26, 41805), (28, 41895), (29, 41919), (30, 41967), (36, 42039), (37, 42069), (38, 42099), (40, 42123),

Gene: ShroomBoi_66 Start: 42177, Stop: 42755, Start Num: 16

Candidate Starts for ShroomBoi_66:

(Start: 16 @42177 has 109 MA's), (19, 42192), (21, 42312), (24, 42369), (28, 42504), (29, 42528), (30, 42576), (37, 42678), (38, 42708), (40, 42732),

Gene: SiSi_62 Start: 40627, Stop: 41205, Start Num: 16

Candidate Starts for SiSi_62:

(Start: 16 @40627 has 109 MA's), (19, 40642), (21, 40762), (26, 40864), (28, 40954), (29, 40978), (30, 41026), (36, 41098), (37, 41128), (38, 41158), (40, 41182),

Gene: SilverChicken_74 Start: 41537, Stop: 42115, Start Num: 16

Candidate Starts for SilverChicken_74:

(Start: 16 @41537 has 109 MA's), (19, 41552), (21, 41672), (28, 41864), (29, 41888), (30, 41936), (36, 42008), (37, 42038), (38, 42068), (40, 42092),

Gene: Skitty_41 Start: 27019, Stop: 27780, Start Num: 5

Candidate Starts for Skitty_41:

(Start: 5 @27019 has 3 MA's), (8, 27055), (9, 27058), (17, 27142), (20, 27235), (24, 27343), (25, 27358), (27, 27445), (28, 27475),

Gene: Skyerus_40 Start: 25995, Stop: 26717, Start Num: 9

Candidate Starts for Skyerus_40:

(2, 25929), (Start: 5 @25956 has 3 MA's), (9, 25995), (17, 26079), (20, 26172), (22, 26232), (24, 26280), (25, 26295), (27, 26382), (28, 26412), (39, 26616),

Gene: Slim_66 Start: 42478, Stop: 43056, Start Num: 16

Candidate Starts for Slim_66:

(1, 42256), (3, 42346), (13, 42421), (14, 42430), (Start: 16 @42478 has 109 MA's), (19, 42493), (21, 42613), (23, 42661), (28, 42805), (29, 42829), (30, 42877), (37, 42979), (38, 43009), (40, 43033),

Gene: Soul22_70 Start: 42902, Stop: 43480, Start Num: 16

Candidate Starts for Soul22_70:

(Start: 16 @42902 has 109 MA's), (18, 42911), (21, 43037), (28, 43229), (29, 43253), (30, 43301), (37, 43403), (38, 43433), (40, 43457),

Gene: Sparkdehlily_71 Start: 42690, Stop: 43268, Start Num: 16

Candidate Starts for Sparkdehlily_71:

(Start: 16 @42690 has 109 MA's), (19, 42705), (21, 42825), (28, 43017), (29, 43041), (30, 43089), (36, 43161), (37, 43191), (38, 43221), (40, 43245),

Gene: Spartacus_66 Start: 41888, Stop: 42466, Start Num: 16

Candidate Starts for Spartacus_66:

(Start: 16 @41888 has 109 MA's), (19, 41903), (21, 42023), (26, 42125), (28, 42215), (29, 42239), (30, 42287), (36, 42359), (37, 42389), (38, 42419), (40, 42443),

Gene: Spikelee_71 Start: 43487, Stop: 44065, Start Num: 16

Candidate Starts for Spikelee_71:

(Start: 16 @43487 has 109 MA's), (18, 43496), (21, 43622), (23, 43670), (28, 43814), (29, 43838), (30, 43886), (33, 43937), (35, 43943), (36, 43958), (37, 43988), (38, 44018), (40, 44042),

Gene: StAnnes_62 Start: 41746, Stop: 42324, Start Num: 16

Candidate Starts for StAnnes_62:

(Start: 16 @41746 has 109 MA's), (19, 41761), (21, 41881), (26, 41983), (28, 42073), (29, 42097), (30, 42145), (36, 42217), (37, 42247), (38, 42277), (40, 42301),

Gene: Starcevich_64 Start: 41369, Stop: 41947, Start Num: 16

Candidate Starts for Starcevich_64:

(Start: 16 @41369 has 109 MA's), (18, 41378), (21, 41504), (28, 41696), (29, 41720), (36, 41840), (37, 41870), (38, 41900), (40, 41924),

Gene: Strokeseat_60 Start: 39336, Stop: 39914, Start Num: 16

Candidate Starts for Strokeseat_60:

(Start: 16 @39336 has 109 MA's), (19, 39351), (21, 39471), (26, 39573), (28, 39663), (29, 39687), (30, 39735), (36, 39807), (37, 39837), (38, 39867), (40, 39891),

Gene: TDanisky_71 Start: 42690, Stop: 43268, Start Num: 16

Candidate Starts for TDanisky_71:

(Start: 16 @42690 has 109 MA's), (19, 42705), (21, 42825), (28, 43017), (29, 43041), (30, 43089), (36, 43161), (37, 43191), (38, 43221), (40, 43245),

Gene: Totinger_64 Start: 40944, Stop: 41522, Start Num: 16

Candidate Starts for Totinger_64:

(1, 40722), (3, 40812), (13, 40887), (14, 40896), (Start: 16 @40944 has 109 MA's), (19, 40959), (21, 41079), (23, 41127), (28, 41271), (29, 41295), (30, 41343), (37, 41445), (38, 41475), (40, 41499),

Gene: Tweety_64 Start: 42540, Stop: 43118, Start Num: 16

Candidate Starts for Tweety_64:

(Start: 16 @42540 has 109 MA's), (19, 42555), (21, 42675), (26, 42777), (28, 42867), (29, 42891), (30, 42939), (36, 43011), (37, 43041), (38, 43071), (40, 43095),

Gene: UncleRicky_63 Start: 41479, Stop: 42057, Start Num: 16

Candidate Starts for UncleRicky_63:

(Start: 16 @41479 has 109 MA's), (19, 41494), (21, 41614), (26, 41716), (28, 41806), (29, 41830), (30, 41878), (36, 41950), (37, 41980), (38, 42010), (40, 42034),

Gene: Veteran_61 Start: 40223, Stop: 40801, Start Num: 16

Candidate Starts for Veteran_61:

(Start: 16 @40223 has 109 MA's), (18, 40232), (21, 40358), (28, 40550), (29, 40574), (30, 40622), (37, 40724), (38, 40754), (40, 40778),

Gene: Violac_65 Start: 42347, Stop: 42931, Start Num: 16

Candidate Starts for Violac_65:

(15, 42338), (Start: 16 @42347 has 109 MA's), (21, 42488), (28, 42680), (29, 42704), (30, 42752), (37, 42854), (38, 42884), (40, 42908),

Gene: WillSterrel_65 Start: 43005, Stop: 43583, Start Num: 16

Candidate Starts for WillSterrel_65:

(Start: 16 @43005 has 109 MA's), (19, 43020), (21, 43140), (26, 43242), (28, 43332), (29, 43356), (30, 43404), (36, 43476), (37, 43506), (38, 43536), (40, 43560),

Gene: XFactor_62 Start: 40257, Stop: 40835, Start Num: 16

Candidate Starts for XFactor_62:

(Start: 16 @40257 has 109 MA's), (19, 40272), (21, 40392), (26, 40494), (28, 40584), (29, 40608), (30, 40656), (36, 40728), (37, 40758), (38, 40788), (40, 40812),

Gene: Zerg_64 Start: 41101, Stop: 41679, Start Num: 16

Candidate Starts for Zerg_64:

(Start: 16 @41101 has 109 MA's), (18, 41110), (21, 41236), (24, 41293), (28, 41428), (29, 41452), (30, 41500), (37, 41602), (38, 41632), (40, 41656),