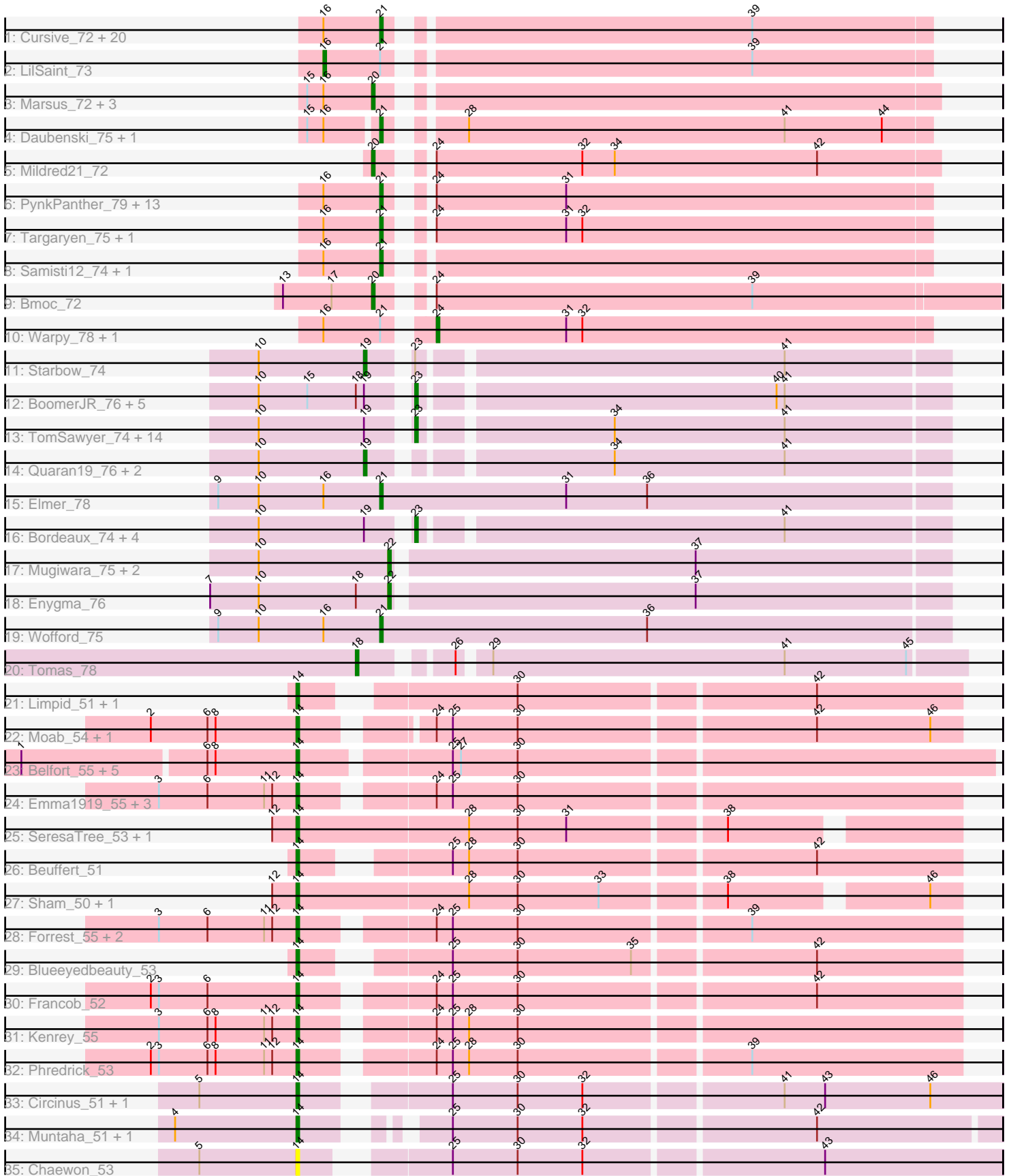


Pham 308306



Note: Tracks are now grouped by subcluster and scaled. Switching in subcluster is indicated by changes in track color. Track scale is now set by default to display the region 30 bp upstream of start 1 to 30 bp downstream of the last possible start. If this default region is judged to be packed too tightly with annotated starts, the track will be further scaled to only show that region of the ORF with annotated starts. This action will be indicated by adding "Zoomed" to the title. For starts, yellow indicates the location of called starts comprised solely of Glimmer/GeneMark auto-annotations, green indicates the location of called starts with at least 1 manual gene annotation.

Pham 308306 Report

This analysis was run 06/27/26 on database version 652.

Pham number 308306 has 118 members, 11 are drafts.

Phages represented in each track:

- Track 1 : Cursive_72, Larnav_74, EGole_75, HangryHippo_74, Tribute_72, Coogler_74, Watermoore_74, PacManQ_73, BlueOtter_74, Anedea_72, WashU_77, Leo04_75, Teutsch_74, ArianaSWT_77, Scheme_75, Cross_74, Peebs_73, Lululemon_73, Pepperwood_74, Sushi23_74, Riptide_71
- Track 2 : LilSaint_73
- Track 3 : Marsus_72, MulchMansion_71, LilMartin_71, Angela_71
- Track 4 : Daubenski_75, Cadmus_72
- Track 5 : Mildred21_72
- Track 6 : PynkPanther_79, Paradiddles_70, Braelyn_73, NootNoot_70, FreddyDRoo_72, Persimmon_70, Squillium_73, Eliot67_72, Navo_72, WhereRU_71, Liandry_73, Bartholomune_72, Davielle_71, PinkiePie_72
- Track 7 : Targaryen_75, Evy_75
- Track 8 : Samisti12_74, Shuckle_72
- Track 9 : Bmoc_72
- Track 10 : Warpy_78, Jay2Jay_79
- Track 11 : Starbow_74
- Track 12 : BoomerJR_76, AngryGiraffe_75, Sollertia_76, Genie2_76, Yaboi_76, Stanimal_76
- Track 13 : TomSawyer_74, CeilingFan_75, Birchlyn_73, SaltySpittoon_76, Gibbi_80, Spelly_76, Karimac_75, Amabiko_76, Daisy123_80, JimJam_76, PumpkinSpice_75, AcciDwight_80, Rikishi_76, MindFlayer_74, Wipeout_74
- Track 14 : Quarant19_76, KentuckyRacer_76, Jollison_75
- Track 15 : Elmer_78
- Track 16 : Bordeaux_74, Spilled_77, Battuta_74, IchabodCrane_73, Brizzy_75
- Track 17 : Mugiwara_75, LukeCage_75, StarPlatinum_76
- Track 18 : Enygma_76
- Track 19 : Wofford_75
- Track 20 : Tomas_78
- Track 21 : Limpid_51, Annadreamy_51
- Track 22 : Moab_54, Patelgo_54
- Track 23 : Belfort_55, Westy_54, Karp_52, Comrade_54, SparkleGoddess_54, Stigma_53
- Track 24 : Emma1919_55, Gilson_54, DeluluLabubu_53, Maupel_53
- Track 25 : SeresaTree_53, Faust_54
- Track 26 : Beuffert_51
- Track 27 : Sham_50, TunaTartare_52
- Track 28 : Forrest_55, MeganTheeKilla_52, Jada_53

- Track 29 : Blueeyedbeauty_53
- Track 30 : Francob_52
- Track 31 : Kenrey_55
- Track 32 : Phredrick_53
- Track 33 : Circinus_51, BillNye_50
- Track 34 : Muntaha_51, Wakanda_50
- Track 35 : Chaewon_53

Summary of Final Annotations (See graph section above for start numbers):

The start number called the most often in the published annotations is 21, it was called in 38 of the 107 non-draft genes in the pham.

Genes that call this "Most Annotated" start:

- Anedeia_72, ArianaSWT_77, Bartholomune_72, BlueOtter_74, Braelyn_73, Cadmus_72, Coogler_74, Cross_74, Cursive_72, Daubenski_75, Davielle_71, EGole_75, Eliot67_72, Elmer_78, Evy_75, FreddyDRoo_72, HangryHippo_74, Larnav_74, Leo04_75, Liandry_73, Lululemon_73, Navo_72, NootNoot_70, PacManQ_73, Paradiddles_70, Peebs_73, Pepperwood_74, Persimmon_70, PinkiePie_72, PynkPanther_79, Riptide_71, Samisti12_74, Scheme_75, Shuckle_72, Squillium_73, Sushi23_74, Targaryen_75, Teutsch_74, Tribute_72, WashU_77, Watermoore_74, WhereRU_71, Wofford_75,

Genes that have the "Most Annotated" start but do not call it:

- Jay2Jay_79, LilSaint_73, Warpy_78,

Genes that do not have the "Most Annotated" start:

- AcciDwight_80, Amabiko_76, Angela_71, AngryGiraffe_75, Annadreamy_51, Battuta_74, Belfort_55, Beuffert_51, BillNye_50, Birchlyn_73, Blueeyedbeauty_53, Bmoc_72, BoomerJR_76, Bordeaux_74, Brizzy_75, CeilingFan_75, Chaewon_53, Circinus_51, Comrade_54, Daisy123_80, DeluluLabubu_53, Emma1919_55, Enygma_76, Faust_54, Forrest_55, Francob_52, Genie2_76, Gibbi_80, Gilson_54, IchabodCrane_73, Jada_53, JimJam_76, Jollison_75, Karimac_75, Karp_52, Kenrey_55, KentuckyRacer_76, LilMartin_71, Limpid_51, LukeCage_75, Marsus_72, Maupel_53, MeganTheeKilla_52, Mildred21_72, MindFlayer_74, Moab_54, Mugiwara_75, MulchMansion_71, Muntaha_51, Patelgo_54, Phredrick_53, PumpkinSpice_75, Quarant19_76, Rikishi_76, SaltySpittoon_76, SeresaTree_53, Sham_50, Sollertia_76, SparkleGoddess_54, Spelly_76, Spilled_77, Stanimal_76, StarPlatinum_76, Starbow_74, Stigma_53, TomSawyer_74, Tomas_78, TunaTartare_52, Wakanda_50, Westy_54, Wipeout_74, Yaboi_76,

Summary by start number:

Start 14:

- Found in 31 of 118 (26.3%) of genes in pham
- Manual Annotations of this start: 28 of 107
- Called 100.0% of time when present
- Phage (with cluster) where this start called: Annadreamy_51 (BK1), Belfort_55 (BK1), Beuffert_51 (BK1), BillNye_50 (BK2), Blueeyedbeauty_53 (BK1), Chaewon_53 (BK2), Circinus_51 (BK2), Comrade_54 (BK1), DeluluLabubu_53 (BK1),

Emma1919_55 (BK1), Faust_54 (BK1), Forrest_55 (BK1), Francob_52 (BK1), Gilson_54 (BK1), Jada_53 (BK1), Karp_52 (BK1), Kenrey_55 (BK1), Limpid_51 (BK1), Maupel_53 (BK1), MeganTheeKilla_52 (BK1), Moab_54 (BK1), Muntaha_51 (BK2), Patelgo_54 (BK1), Phredrick_53 (BK1), SeresaTree_53 (BK1), Sham_50 (BK1), SparkleGoddess_54 (BK1), Stigma_53 (BK1), TunaTartare_52 (BK1), Wakanda_50 (BK2), Westy_54 (BK1),

Start 16:

- Found in 50 of 118 (42.4%) of genes in pham
- Manual Annotations of this start: 1 of 107
- Called 2.0% of time when present
- Phage (with cluster) where this start called: LilSaint_73 (BE1),

Start 18:

- Found in 8 of 118 (6.8%) of genes in pham
- Manual Annotations of this start: 1 of 107
- Called 12.5% of time when present
- Phage (with cluster) where this start called: Tomas_78 (BE2),

Start 19:

- Found in 30 of 118 (25.4%) of genes in pham
- Manual Annotations of this start: 4 of 107
- Called 13.3% of time when present
- Phage (with cluster) where this start called: Jollison_75 (BE2), KentuckyRacer_76 (BE2), Quaran19_76 (BE2), Starbow_74 (BE2),

Start 20:

- Found in 6 of 118 (5.1%) of genes in pham
- Manual Annotations of this start: 6 of 107
- Called 100.0% of time when present
- Phage (with cluster) where this start called: Angela_71 (BE1), Bmoc_72 (BE1), LilMartin_71 (BE1), Marsus_72 (BE1), Mildred21_72 (BE1), MulchMansion_71 (BE1),

Start 21:

- Found in 46 of 118 (39.0%) of genes in pham
- Manual Annotations of this start: 38 of 107
- Called 93.5% of time when present
- Phage (with cluster) where this start called: Anedea_72 (BE1), ArianaSWT_77 (BE1), Bartholomune_72 (BE1), BlueOtter_74 (BE1), Braelyn_73 (BE1), Cadmus_72 (BE1), Coogler_74 (BE1), Cross_74 (BE1), Cursive_72 (BE1), Daubenski_75 (BE1), Davielle_71 (BE1), EGole_75 (BE1), Eliot67_72 (BE1), Elmer_78 (BE2), Evy_75 (BE1), FreddyDRoo_72 (BE1), HangryHippo_74 (BE1), Larnav_74 (BE1), Leo04_75 (BE1), Liandry_73 (BE1), Lululemon_73 (BE1), Navo_72 (BE1), NootNoot_70 (BE1), PacManQ_73 (BE1), Paradiddles_70 (BE1), Peebs_73 (BE1), Pepperwood_74 (BE1), Persimmon_70 (BE1), PinkiePie_72 (BE1), PynkPanther_79 (BE1), Riptide_71 (BE1), Samisti12_74 (BE1), Scheme_75 (BE1), Shuckle_72 (BE1), Squillium_73 (BE1), Sushi23_74 (BE1), Targaryen_75 (BE1), Teutsch_74 (BE1), Tribute_72 (BE1), WashU_77 (BE1), Watermoore_74 (BE1), WhereRU_71 (BE1), Wofford_75 (BE2),

Start 22:

- Found in 4 of 118 (3.4%) of genes in pham
- Manual Annotations of this start: 4 of 107
- Called 100.0% of time when present

- Phage (with cluster) where this start called: Enygma_76 (BE2), LukeCage_75 (BE2), Mugiwara_75 (BE2), StarPlatinum_76 (BE2),

Start 23:

- Found in 27 of 118 (22.9%) of genes in pham
- Manual Annotations of this start: 23 of 107
- Called 96.3% of time when present
- Phage (with cluster) where this start called: AcciDwight_80 (BE2), Amabiko_76 (BE2), AngryGiraffe_75 (BE2), Battuta_74 (BE2), Birchlyn_73 (BE2), BoomerJR_76 (BE2), Bordeaux_74 (BE2), Brizzy_75 (BE2), CeilingFan_75 (BE2), Daisy123_80 (BE2), Genie2_76 (BE2), Gibbi_80 (BE2), IchabodCrane_73 (BE2), JimJam_76 (BE2), Karimac_75 (BE2), MindFlayer_74 (BE2), PumpkinSpice_75 (BE2), Rikishi_76 (BE2), SaltySpittoon_76 (BE2), Sollertia_76 (BE2), Spelly_76 (BE2), Spilled_77 (BE2), Stanimal_76 (BE2), TomSawyer_74 (BE2), Wipeout_74 (BE2), Yaboi_76 (BE2),

Start 24:

- Found in 32 of 118 (27.1%) of genes in pham
- Manual Annotations of this start: 2 of 107
- Called 6.2% of time when present
- Phage (with cluster) where this start called: Jay2Jay_79 (BE1), Warpy_78 (BE1),

Summary by clusters:

There are 4 clusters represented in this pham: BE2, BE1, BK1, BK2,

Info for manual annotations of cluster BE1:

- Start number 16 was manually annotated 1 time for cluster BE1.
- Start number 20 was manually annotated 6 times for cluster BE1.
- Start number 21 was manually annotated 36 times for cluster BE1.
- Start number 24 was manually annotated 2 times for cluster BE1.

Info for manual annotations of cluster BE2:

- Start number 18 was manually annotated 1 time for cluster BE2.
- Start number 19 was manually annotated 4 times for cluster BE2.
- Start number 21 was manually annotated 2 times for cluster BE2.
- Start number 22 was manually annotated 4 times for cluster BE2.
- Start number 23 was manually annotated 23 times for cluster BE2.

Info for manual annotations of cluster BK1:

- Start number 14 was manually annotated 24 times for cluster BK1.

Info for manual annotations of cluster BK2:

- Start number 14 was manually annotated 4 times for cluster BK2.

Gene Information:

Gene: AcciDwight_80 Start: 54382, Stop: 54570, Start Num: 23

Candidate Starts for AcciDwight_80:

(10, 54331), (Start: 19 @54370 has 4 MA's), (Start: 23 @54382 has 23 MA's), (34, 54448), (41, 54511),

Gene: Amabiko_76 Start: 54427, Stop: 54615, Start Num: 23

Candidate Starts for Amabiko_76:
(10, 54376), (Start: 19 @54415 has 4 MA's), (Start: 23 @54427 has 23 MA's), (34, 54493), (41, 54556),

Gene: Anedea_72 Start: 53993, Stop: 54184, Start Num: 21
Candidate Starts for Anedea_72:
(Start: 16 @53972 has 1 MA's), (Start: 21 @53993 has 38 MA's), (39, 54119),

Gene: Angela_71 Start: 53445, Stop: 53642, Start Num: 20
Candidate Starts for Angela_71:
(15, 53421), (Start: 16 @53427 has 1 MA's), (Start: 20 @53445 has 6 MA's),

Gene: AngryGiraffe_75 Start: 54378, Stop: 54566, Start Num: 23
Candidate Starts for AngryGiraffe_75:
(10, 54327), (15, 54345), (Start: 18 @54363 has 1 MA's), (Start: 19 @54366 has 4 MA's), (Start: 23 @54378 has 23 MA's), (40, 54504), (41, 54507),

Gene: Annadreamy_51 Start: 43372, Stop: 43596, Start Num: 14
Candidate Starts for Annadreamy_51:
(Start: 14 @43372 has 28 MA's), (30, 43438), (42, 43543),

Gene: ArianaSWT_77 Start: 55149, Stop: 55340, Start Num: 21
Candidate Starts for ArianaSWT_77:
(Start: 16 @55128 has 1 MA's), (Start: 21 @55149 has 38 MA's), (39, 55275),

Gene: Bartholomune_72 Start: 53812, Stop: 54003, Start Num: 21
Candidate Starts for Bartholomune_72:
(Start: 16 @53791 has 1 MA's), (Start: 21 @53812 has 38 MA's), (Start: 24 @53821 has 2 MA's), (31, 53869),

Gene: Battuta_74 Start: 54401, Stop: 54589, Start Num: 23
Candidate Starts for Battuta_74:
(10, 54350), (Start: 19 @54389 has 4 MA's), (Start: 23 @54401 has 23 MA's), (41, 54530),

Gene: Belfort_55 Start: 45887, Stop: 46132, Start Num: 14
Candidate Starts for Belfort_55:
(1, 45788), (6, 45854), (8, 45857), (Start: 14 @45887 has 28 MA's), (25, 45938), (27, 45941), (30, 45962),

Gene: Beuffert_51 Start: 44510, Stop: 44734, Start Num: 14
Candidate Starts for Beuffert_51:
(Start: 14 @44510 has 28 MA's), (25, 44552), (28, 44558), (30, 44576), (42, 44681),

Gene: BillNye_50 Start: 47336, Stop: 47578, Start Num: 14
Candidate Starts for BillNye_50:
(5, 47300), (Start: 14 @47336 has 28 MA's), (25, 47381), (30, 47405), (32, 47429), (41, 47498), (43, 47513), (46, 47552),

Gene: Birchlyn_73 Start: 52284, Stop: 52472, Start Num: 23
Candidate Starts for Birchlyn_73:
(10, 52233), (Start: 19 @52272 has 4 MA's), (Start: 23 @52284 has 23 MA's), (34, 52350), (41, 52413),

Gene: BlueOtter_74 Start: 55186, Stop: 55377, Start Num: 21
Candidate Starts for BlueOtter_74:

(Start: 16 @55165 has 1 MA's), (Start: 21 @55186 has 38 MA's), (39, 55312),

Gene: Blueeyedbeauty_53 Start: 43884, Stop: 44108, Start Num: 14

Candidate Starts for Blueeyedbeauty_53:

(Start: 14 @43884 has 28 MA's), (25, 43926), (30, 43950), (35, 43992), (42, 44055),

Gene: Bmoc_72 Start: 53803, Stop: 54021, Start Num: 20

Candidate Starts for Bmoc_72:

(13, 53770), (17, 53788), (Start: 20 @53803 has 6 MA's), (Start: 24 @53815 has 2 MA's), (39, 53932),

Gene: BoomerJR_76 Start: 54267, Stop: 54455, Start Num: 23

Candidate Starts for BoomerJR_76:

(10, 54216), (15, 54234), (Start: 18 @54252 has 1 MA's), (Start: 19 @54255 has 4 MA's), (Start: 23 @54267 has 23 MA's), (40, 54393), (41, 54396),

Gene: Bordeaux_74 Start: 54556, Stop: 54744, Start Num: 23

Candidate Starts for Bordeaux_74:

(10, 54505), (Start: 19 @54544 has 4 MA's), (Start: 23 @54556 has 23 MA's), (41, 54685),

Gene: Braelyn_73 Start: 54579, Stop: 54770, Start Num: 21

Candidate Starts for Braelyn_73:

(Start: 16 @54558 has 1 MA's), (Start: 21 @54579 has 38 MA's), (Start: 24 @54588 has 2 MA's), (31, 54636),

Gene: Brizzy_75 Start: 54075, Stop: 54263, Start Num: 23

Candidate Starts for Brizzy_75:

(10, 54024), (Start: 19 @54063 has 4 MA's), (Start: 23 @54075 has 23 MA's), (41, 54204),

Gene: Cadmus_72 Start: 54158, Stop: 54349, Start Num: 21

Candidate Starts for Cadmus_72:

(15, 54134), (Start: 16 @54140 has 1 MA's), (Start: 21 @54158 has 38 MA's), (28, 54179), (41, 54296), (44, 54332),

Gene: CeilingFan_75 Start: 54316, Stop: 54504, Start Num: 23

Candidate Starts for CeilingFan_75:

(10, 54265), (Start: 19 @54304 has 4 MA's), (Start: 23 @54316 has 23 MA's), (34, 54382), (41, 54445),

Gene: Chaewon_53 Start: 47476, Stop: 47715, Start Num: 14

Candidate Starts for Chaewon_53:

(5, 47440), (Start: 14 @47476 has 28 MA's), (25, 47518), (30, 47542), (32, 47566), (43, 47650),

Gene: Circinus_51 Start: 47475, Stop: 47717, Start Num: 14

Candidate Starts for Circinus_51:

(5, 47439), (Start: 14 @47475 has 28 MA's), (25, 47520), (30, 47544), (32, 47568), (41, 47637), (43, 47652), (46, 47691),

Gene: Comrade_54 Start: 45503, Stop: 45748, Start Num: 14

Candidate Starts for Comrade_54:

(1, 45404), (6, 45470), (8, 45473), (Start: 14 @45503 has 28 MA's), (25, 45554), (27, 45557), (30, 45578),

Gene: Coogler_74 Start: 55212, Stop: 55403, Start Num: 21

Candidate Starts for Coogler_74:

(Start: 16 @55191 has 1 MA's), (Start: 21 @55212 has 38 MA's), (39, 55338),

Gene: Cross_74 Start: 55187, Stop: 55378, Start Num: 21

Candidate Starts for Cross_74:

(Start: 16 @55166 has 1 MA's), (Start: 21 @55187 has 38 MA's), (39, 55313),

Gene: Cursive_72 Start: 54712, Stop: 54903, Start Num: 21

Candidate Starts for Cursive_72:

(Start: 16 @54691 has 1 MA's), (Start: 21 @54712 has 38 MA's), (39, 54838),

Gene: Daisy123_80 Start: 54175, Stop: 54363, Start Num: 23

Candidate Starts for Daisy123_80:

(10, 54124), (Start: 19 @54163 has 4 MA's), (Start: 23 @54175 has 23 MA's), (34, 54241), (41, 54304),

Gene: Daubenski_75 Start: 54922, Stop: 55113, Start Num: 21

Candidate Starts for Daubenski_75:

(15, 54898), (Start: 16 @54904 has 1 MA's), (Start: 21 @54922 has 38 MA's), (28, 54943), (41, 55060), (44, 55096),

Gene: Davielle_71 Start: 53999, Stop: 54190, Start Num: 21

Candidate Starts for Davielle_71:

(Start: 16 @53978 has 1 MA's), (Start: 21 @53999 has 38 MA's), (Start: 24 @54008 has 2 MA's), (31, 54056),

Gene: DeluluLabubu_53 Start: 43617, Stop: 43847, Start Num: 14

Candidate Starts for DeluluLabubu_53:

(3, 43566), (6, 43584), (11, 43605), (12, 43608), (Start: 14 @43617 has 28 MA's), (Start: 24 @43659 has 2 MA's), (25, 43665), (30, 43689),

Gene: EGole_75 Start: 56133, Stop: 56324, Start Num: 21

Candidate Starts for EGole_75:

(Start: 16 @56112 has 1 MA's), (Start: 21 @56133 has 38 MA's), (39, 56259),

Gene: Eliot67_72 Start: 53854, Stop: 54045, Start Num: 21

Candidate Starts for Eliot67_72:

(Start: 16 @53833 has 1 MA's), (Start: 21 @53854 has 38 MA's), (Start: 24 @53863 has 2 MA's), (31, 53911),

Gene: Elmer_78 Start: 55487, Stop: 55696, Start Num: 21

Candidate Starts for Elmer_78:

(9, 55427), (10, 55442), (Start: 16 @55466 has 1 MA's), (Start: 21 @55487 has 38 MA's), (31, 55556), (36, 55586),

Gene: Emma1919_55 Start: 44300, Stop: 44530, Start Num: 14

Candidate Starts for Emma1919_55:

(3, 44249), (6, 44267), (11, 44288), (12, 44291), (Start: 14 @44300 has 28 MA's), (Start: 24 @44342 has 2 MA's), (25, 44348), (30, 44372),

Gene: Enygma_76 Start: 56198, Stop: 56398, Start Num: 22

Candidate Starts for Enygma_76:

(7, 56132), (10, 56150), (Start: 18 @56186 has 1 MA's), (Start: 22 @56198 has 4 MA's), (37, 56306),

Gene: Evy_75 Start: 55080, Stop: 55271, Start Num: 21

Candidate Starts for Evy_75:

(Start: 16 @55059 has 1 MA's), (Start: 21 @55080 has 38 MA's), (Start: 24 @55089 has 2 MA's), (31, 55137), (32, 55143),

Gene: Faust_54 Start: 45437, Stop: 45667, Start Num: 14

Candidate Starts for Faust_54:

(12, 45428), (Start: 14 @45437 has 28 MA's), (28, 45500), (30, 45518), (31, 45536), (38, 45590),

Gene: Forrest_55 Start: 44997, Stop: 45227, Start Num: 14

Candidate Starts for Forrest_55:

(3, 44946), (6, 44964), (11, 44985), (12, 44988), (Start: 14 @44997 has 28 MA's), (Start: 24 @45039 has 2 MA's), (25, 45045), (30, 45069), (39, 45150),

Gene: Francob_52 Start: 44361, Stop: 44591, Start Num: 14

Candidate Starts for Francob_52:

(2, 44307), (3, 44310), (6, 44328), (Start: 14 @44361 has 28 MA's), (Start: 24 @44403 has 2 MA's), (25, 44409), (30, 44433), (42, 44538),

Gene: FreddyDRoo_72 Start: 53854, Stop: 54045, Start Num: 21

Candidate Starts for FreddyDRoo_72:

(Start: 16 @53833 has 1 MA's), (Start: 21 @53854 has 38 MA's), (Start: 24 @53863 has 2 MA's), (31, 53911),

Gene: Genie2_76 Start: 54381, Stop: 54569, Start Num: 23

Candidate Starts for Genie2_76:

(10, 54330), (15, 54348), (Start: 18 @54366 has 1 MA's), (Start: 19 @54369 has 4 MA's), (Start: 23 @54381 has 23 MA's), (40, 54507), (41, 54510),

Gene: Gibbi_80 Start: 54539, Stop: 54727, Start Num: 23

Candidate Starts for Gibbi_80:

(10, 54488), (Start: 19 @54527 has 4 MA's), (Start: 23 @54539 has 23 MA's), (34, 54605), (41, 54668),

Gene: Gilson_54 Start: 44253, Stop: 44483, Start Num: 14

Candidate Starts for Gilson_54:

(3, 44202), (6, 44220), (11, 44241), (12, 44244), (Start: 14 @44253 has 28 MA's), (Start: 24 @44295 has 2 MA's), (25, 44301), (30, 44325),

Gene: HangryHippo_74 Start: 55186, Stop: 55377, Start Num: 21

Candidate Starts for HangryHippo_74:

(Start: 16 @55165 has 1 MA's), (Start: 21 @55186 has 38 MA's), (39, 55312),

Gene: IchabodCrane_73 Start: 54128, Stop: 54316, Start Num: 23

Candidate Starts for IchabodCrane_73:

(10, 54077), (Start: 19 @54116 has 4 MA's), (Start: 23 @54128 has 23 MA's), (41, 54257),

Gene: Jada_53 Start: 44179, Stop: 44409, Start Num: 14

Candidate Starts for Jada_53:

(3, 44128), (6, 44146), (11, 44167), (12, 44170), (Start: 14 @44179 has 28 MA's), (Start: 24 @44221 has 2 MA's), (25, 44227), (30, 44251), (39, 44332),

Gene: Jay2Jay_79 Start: 55942, Stop: 56124, Start Num: 24

Candidate Starts for Jay2Jay_79:

(Start: 16 @55912 has 1 MA's), (Start: 21 @55933 has 38 MA's), (Start: 24 @55942 has 2 MA's), (31, 55990), (32, 55996),

Gene: JimJam_76 Start: 54502, Stop: 54690, Start Num: 23

Candidate Starts for JimJam_76:

(10, 54451), (Start: 19 @54490 has 4 MA's), (Start: 23 @54502 has 23 MA's), (34, 54568), (41, 54631),

Gene: Jollison_75 Start: 54372, Stop: 54572, Start Num: 19

Candidate Starts for Jollison_75:

(10, 54333), (Start: 19 @54372 has 4 MA's), (34, 54450), (41, 54513),

Gene: Karimac_75 Start: 54533, Stop: 54721, Start Num: 23

Candidate Starts for Karimac_75:

(10, 54482), (Start: 19 @54521 has 4 MA's), (Start: 23 @54533 has 23 MA's), (34, 54599), (41, 54662),

Gene: Karp_52 Start: 45102, Stop: 45347, Start Num: 14

Candidate Starts for Karp_52:

(1, 45003), (6, 45069), (8, 45072), (Start: 14 @45102 has 28 MA's), (25, 45153), (27, 45156), (30, 45177),

Gene: Kenrey_55 Start: 44448, Stop: 44678, Start Num: 14

Candidate Starts for Kenrey_55:

(3, 44397), (6, 44415), (8, 44418), (11, 44436), (12, 44439), (Start: 14 @44448 has 28 MA's), (Start: 24 @44490 has 2 MA's), (25, 44496), (28, 44502), (30, 44520),

Gene: KentuckyRacer_76 Start: 54305, Stop: 54505, Start Num: 19

Candidate Starts for KentuckyRacer_76:

(10, 54266), (Start: 19 @54305 has 4 MA's), (34, 54383), (41, 54446),

Gene: Larnav_74 Start: 55171, Stop: 55362, Start Num: 21

Candidate Starts for Larnav_74:

(Start: 16 @55150 has 1 MA's), (Start: 21 @55171 has 38 MA's), (39, 55297),

Gene: Leo04_75 Start: 55686, Stop: 55877, Start Num: 21

Candidate Starts for Leo04_75:

(Start: 16 @55665 has 1 MA's), (Start: 21 @55686 has 38 MA's), (39, 55812),

Gene: Liandry_73 Start: 54561, Stop: 54752, Start Num: 21

Candidate Starts for Liandry_73:

(Start: 16 @54540 has 1 MA's), (Start: 21 @54561 has 38 MA's), (Start: 24 @54570 has 2 MA's), (31, 54618),

Gene: LilMartin_71 Start: 53393, Stop: 53590, Start Num: 20

Candidate Starts for LilMartin_71:

(15, 53369), (Start: 16 @53375 has 1 MA's), (Start: 20 @53393 has 6 MA's),

Gene: LilSaint_73 Start: 53644, Stop: 53856, Start Num: 16

Candidate Starts for LilSaint_73:

(Start: 16 @53644 has 1 MA's), (Start: 21 @53665 has 38 MA's), (39, 53791),

Gene: Limpid_51 Start: 43371, Stop: 43595, Start Num: 14

Candidate Starts for Limpid_51:

(Start: 14 @43371 has 28 MA's), (30, 43437), (42, 43542),

Gene: LukeCage_75 Start: 54284, Stop: 54484, Start Num: 22

Candidate Starts for LukeCage_75:

(10, 54236), (Start: 22 @54284 has 4 MA's), (37, 54392),

Gene: Lululemon_73 Start: 54567, Stop: 54758, Start Num: 21

Candidate Starts for Lululemon_73:

(Start: 16 @54546 has 1 MA's), (Start: 21 @54567 has 38 MA's), (39, 54693),

Gene: Marsus_72 Start: 53665, Stop: 53862, Start Num: 20

Candidate Starts for Marsus_72:

(15, 53641), (Start: 16 @53647 has 1 MA's), (Start: 20 @53665 has 6 MA's),

Gene: Maupel_53 Start: 44253, Stop: 44483, Start Num: 14

Candidate Starts for Maupel_53:

(3, 44202), (6, 44220), (11, 44241), (12, 44244), (Start: 14 @44253 has 28 MA's), (Start: 24 @44295 has 2 MA's), (25, 44301), (30, 44325),

Gene: MeganTheeKilla_52 Start: 43614, Stop: 43844, Start Num: 14

Candidate Starts for MeganTheeKilla_52:

(3, 43563), (6, 43581), (11, 43602), (12, 43605), (Start: 14 @43614 has 28 MA's), (Start: 24 @43656 has 2 MA's), (25, 43662), (30, 43686), (39, 43767),

Gene: Mildred21_72 Start: 53597, Stop: 53794, Start Num: 20

Candidate Starts for Mildred21_72:

(Start: 20 @53597 has 6 MA's), (Start: 24 @53609 has 2 MA's), (32, 53663), (34, 53675), (42, 53750),

Gene: MindFlayer_74 Start: 54035, Stop: 54223, Start Num: 23

Candidate Starts for MindFlayer_74:

(10, 53984), (Start: 19 @54023 has 4 MA's), (Start: 23 @54035 has 23 MA's), (34, 54101), (41, 54164),

Gene: Moab_54 Start: 45473, Stop: 45700, Start Num: 14

Candidate Starts for Moab_54:

(2, 45419), (6, 45440), (8, 45443), (Start: 14 @45473 has 28 MA's), (Start: 24 @45512 has 2 MA's), (25, 45518), (30, 45542), (42, 45647), (46, 45689),

Gene: Mugiwara_75 Start: 54783, Stop: 54983, Start Num: 22

Candidate Starts for Mugiwara_75:

(10, 54735), (Start: 22 @54783 has 4 MA's), (37, 54891),

Gene: MulchMansion_71 Start: 53393, Stop: 53590, Start Num: 20

Candidate Starts for MulchMansion_71:

(15, 53369), (Start: 16 @53375 has 1 MA's), (Start: 20 @53393 has 6 MA's),

Gene: Muntaha_51 Start: 45723, Stop: 45953, Start Num: 14

Candidate Starts for Muntaha_51:

(4, 45678), (Start: 14 @45723 has 28 MA's), (25, 45759), (30, 45783), (32, 45807), (42, 45888),

Gene: Navo_72 Start: 54483, Stop: 54674, Start Num: 21

Candidate Starts for Navo_72:

(Start: 16 @54462 has 1 MA's), (Start: 21 @54483 has 38 MA's), (Start: 24 @54492 has 2 MA's), (31, 54540),

Gene: NootNoot_70 Start: 53475, Stop: 53666, Start Num: 21
Candidate Starts for NootNoot_70:
(Start: 16 @53454 has 1 MA's), (Start: 21 @53475 has 38 MA's), (Start: 24 @53484 has 2 MA's), (31, 53532),

Gene: PacManQ_73 Start: 54567, Stop: 54758, Start Num: 21
Candidate Starts for PacManQ_73:
(Start: 16 @54546 has 1 MA's), (Start: 21 @54567 has 38 MA's), (39, 54693),

Gene: Paradiddles_70 Start: 53739, Stop: 53930, Start Num: 21
Candidate Starts for Paradiddles_70:
(Start: 16 @53718 has 1 MA's), (Start: 21 @53739 has 38 MA's), (Start: 24 @53748 has 2 MA's), (31, 53796),

Gene: Patelgo_54 Start: 45660, Stop: 45887, Start Num: 14
Candidate Starts for Patelgo_54:
(2, 45606), (6, 45627), (8, 45630), (Start: 14 @45660 has 28 MA's), (Start: 24 @45699 has 2 MA's), (25, 45705), (30, 45729), (42, 45834), (46, 45876),

Gene: Peebs_73 Start: 54921, Stop: 55112, Start Num: 21
Candidate Starts for Peebs_73:
(Start: 16 @54900 has 1 MA's), (Start: 21 @54921 has 38 MA's), (39, 55047),

Gene: Pepperwood_74 Start: 55054, Stop: 55245, Start Num: 21
Candidate Starts for Pepperwood_74:
(Start: 16 @55033 has 1 MA's), (Start: 21 @55054 has 38 MA's), (39, 55180),

Gene: Persimmon_70 Start: 53408, Stop: 53599, Start Num: 21
Candidate Starts for Persimmon_70:
(Start: 16 @53387 has 1 MA's), (Start: 21 @53408 has 38 MA's), (Start: 24 @53417 has 2 MA's), (31, 53465),

Gene: Phredrick_53 Start: 43519, Stop: 43749, Start Num: 14
Candidate Starts for Phredrick_53:
(2, 43465), (3, 43468), (6, 43486), (8, 43489), (11, 43507), (12, 43510), (Start: 14 @43519 has 28 MA's), (Start: 24 @43561 has 2 MA's), (25, 43567), (28, 43573), (30, 43591), (39, 43672),

Gene: PinkiePie_72 Start: 54561, Stop: 54752, Start Num: 21
Candidate Starts for PinkiePie_72:
(Start: 16 @54540 has 1 MA's), (Start: 21 @54561 has 38 MA's), (Start: 24 @54570 has 2 MA's), (31, 54618),

Gene: PumpkinSpice_75 Start: 54427, Stop: 54615, Start Num: 23
Candidate Starts for PumpkinSpice_75:
(10, 54376), (Start: 19 @54415 has 4 MA's), (Start: 23 @54427 has 23 MA's), (34, 54493), (41, 54556),

Gene: PynkPanther_79 Start: 54541, Stop: 54732, Start Num: 21
Candidate Starts for PynkPanther_79:
(Start: 16 @54520 has 1 MA's), (Start: 21 @54541 has 38 MA's), (Start: 24 @54550 has 2 MA's), (31, 54598),

Gene: Quaran19_76 Start: 54406, Stop: 54606, Start Num: 19
Candidate Starts for Quaran19_76:

(10, 54367), (Start: 19 @54406 has 4 MA's), (34, 54484), (41, 54547),

Gene: Rikishi_76 Start: 54333, Stop: 54521, Start Num: 23

Candidate Starts for Rikishi_76:

(10, 54282), (Start: 19 @54321 has 4 MA's), (Start: 23 @54333 has 23 MA's), (34, 54399), (41, 54462),

Gene: Riptide_71 Start: 53209, Stop: 53400, Start Num: 21

Candidate Starts for Riptide_71:

(Start: 16 @53188 has 1 MA's), (Start: 21 @53209 has 38 MA's), (39, 53335),

Gene: SaltySpittoon_76 Start: 54427, Stop: 54615, Start Num: 23

Candidate Starts for SaltySpittoon_76:

(10, 54376), (Start: 19 @54415 has 4 MA's), (Start: 23 @54427 has 23 MA's), (34, 54493), (41, 54556),

Gene: Samisti12_74 Start: 56364, Stop: 56555, Start Num: 21

Candidate Starts for Samisti12_74:

(Start: 16 @56343 has 1 MA's), (Start: 21 @56364 has 38 MA's),

Gene: Scheme_75 Start: 55768, Stop: 55959, Start Num: 21

Candidate Starts for Scheme_75:

(Start: 16 @55747 has 1 MA's), (Start: 21 @55768 has 38 MA's), (39, 55894),

Gene: SeresaTree_53 Start: 44827, Stop: 45057, Start Num: 14

Candidate Starts for SeresaTree_53:

(12, 44818), (Start: 14 @44827 has 28 MA's), (28, 44890), (30, 44908), (31, 44926), (38, 44980),

Gene: Sham_50 Start: 45368, Stop: 45598, Start Num: 14

Candidate Starts for Sham_50:

(12, 45359), (Start: 14 @45368 has 28 MA's), (28, 45431), (30, 45449), (33, 45479), (38, 45521), (46, 45587),

Gene: Shuckle_72 Start: 55378, Stop: 55569, Start Num: 21

Candidate Starts for Shuckle_72:

(Start: 16 @55357 has 1 MA's), (Start: 21 @55378 has 38 MA's),

Gene: Sollertia_76 Start: 54381, Stop: 54569, Start Num: 23

Candidate Starts for Sollertia_76:

(10, 54330), (15, 54348), (Start: 18 @54366 has 1 MA's), (Start: 19 @54369 has 4 MA's), (Start: 23 @54381 has 23 MA's), (40, 54507), (41, 54510),

Gene: SparkleGoddess_54 Start: 45504, Stop: 45749, Start Num: 14

Candidate Starts for SparkleGoddess_54:

(1, 45405), (6, 45471), (8, 45474), (Start: 14 @45504 has 28 MA's), (25, 45555), (27, 45558), (30, 45579),

Gene: Spelly_76 Start: 54382, Stop: 54570, Start Num: 23

Candidate Starts for Spelly_76:

(10, 54331), (Start: 19 @54370 has 4 MA's), (Start: 23 @54382 has 23 MA's), (34, 54448), (41, 54511),

Gene: Spilled_77 Start: 54499, Stop: 54687, Start Num: 23

Candidate Starts for Spilled_77:

(10, 54448), (Start: 19 @54487 has 4 MA's), (Start: 23 @54499 has 23 MA's), (41, 54628),

Gene: Squillium_73 Start: 54562, Stop: 54753, Start Num: 21
Candidate Starts for Squillium_73:
(Start: 16 @54541 has 1 MA's), (Start: 21 @54562 has 38 MA's), (Start: 24 @54571 has 2 MA's), (31, 54619),

Gene: Stanimal_76 Start: 54270, Stop: 54458, Start Num: 23
Candidate Starts for Stanimal_76:
(10, 54219), (15, 54237), (Start: 18 @54255 has 1 MA's), (Start: 19 @54258 has 4 MA's), (Start: 23 @54270 has 23 MA's), (40, 54396), (41, 54399),

Gene: StarPlatinum_76 Start: 54924, Stop: 55124, Start Num: 22
Candidate Starts for StarPlatinum_76:
(10, 54876), (Start: 22 @54924 has 4 MA's), (37, 55032),

Gene: Starbow_74 Start: 54391, Stop: 54591, Start Num: 19
Candidate Starts for Starbow_74:
(10, 54352), (Start: 19 @54391 has 4 MA's), (Start: 23 @54403 has 23 MA's), (41, 54532),

Gene: Stigma_53 Start: 45518, Stop: 45763, Start Num: 14
Candidate Starts for Stigma_53:
(1, 45419), (6, 45485), (8, 45488), (Start: 14 @45518 has 28 MA's), (25, 45569), (27, 45572), (30, 45593),

Gene: Sushi23_74 Start: 55279, Stop: 55470, Start Num: 21
Candidate Starts for Sushi23_74:
(Start: 16 @55258 has 1 MA's), (Start: 21 @55279 has 38 MA's), (39, 55405),

Gene: Targaryen_75 Start: 55982, Stop: 56173, Start Num: 21
Candidate Starts for Targaryen_75:
(Start: 16 @55961 has 1 MA's), (Start: 21 @55982 has 38 MA's), (Start: 24 @55991 has 2 MA's), (31, 56039), (32, 56045),

Gene: Teutsch_74 Start: 55542, Stop: 55733, Start Num: 21
Candidate Starts for Teutsch_74:
(Start: 16 @55521 has 1 MA's), (Start: 21 @55542 has 38 MA's), (39, 55668),

Gene: TomSawyer_74 Start: 54021, Stop: 54209, Start Num: 23
Candidate Starts for TomSawyer_74:
(10, 53970), (Start: 19 @54009 has 4 MA's), (Start: 23 @54021 has 23 MA's), (34, 54087), (41, 54150),

Gene: Tomas_78 Start: 56737, Stop: 56946, Start Num: 18
Candidate Starts for Tomas_78:
(Start: 18 @56737 has 1 MA's), (26, 56764), (29, 56773), (41, 56881), (45, 56926),

Gene: Tribute_72 Start: 54748, Stop: 54939, Start Num: 21
Candidate Starts for Tribute_72:
(Start: 16 @54727 has 1 MA's), (Start: 21 @54748 has 38 MA's), (39, 54874),

Gene: TunaTartare_52 Start: 45671, Stop: 45901, Start Num: 14
Candidate Starts for TunaTartare_52:
(12, 45662), (Start: 14 @45671 has 28 MA's), (28, 45734), (30, 45752), (33, 45782), (38, 45824), (46, 45890),

Gene: Wakanda_50 Start: 45660, Stop: 45890, Start Num: 14

Candidate Starts for Wakanda_50:

(4, 45615), (Start: 14 @45660 has 28 MA's), (25, 45696), (30, 45720), (32, 45744), (42, 45825),

Gene: Warpy_78 Start: 55455, Stop: 55637, Start Num: 24

Candidate Starts for Warpy_78:

(Start: 16 @55425 has 1 MA's), (Start: 21 @55446 has 38 MA's), (Start: 24 @55455 has 2 MA's), (31, 55503), (32, 55509),

Gene: WashU_77 Start: 55057, Stop: 55248, Start Num: 21

Candidate Starts for WashU_77:

(Start: 16 @55036 has 1 MA's), (Start: 21 @55057 has 38 MA's), (39, 55183),

Gene: Watermoore_74 Start: 55758, Stop: 55949, Start Num: 21

Candidate Starts for Watermoore_74:

(Start: 16 @55737 has 1 MA's), (Start: 21 @55758 has 38 MA's), (39, 55884),

Gene: Westy_54 Start: 45505, Stop: 45750, Start Num: 14

Candidate Starts for Westy_54:

(1, 45406), (6, 45472), (8, 45475), (Start: 14 @45505 has 28 MA's), (25, 45556), (27, 45559), (30, 45580),

Gene: WhereRU_71 Start: 53999, Stop: 54190, Start Num: 21

Candidate Starts for WhereRU_71:

(Start: 16 @53978 has 1 MA's), (Start: 21 @53999 has 38 MA's), (Start: 24 @54008 has 2 MA's), (31, 54056),

Gene: Wipeout_74 Start: 54772, Stop: 54960, Start Num: 23

Candidate Starts for Wipeout_74:

(10, 54721), (Start: 19 @54760 has 4 MA's), (Start: 23 @54772 has 23 MA's), (34, 54838), (41, 54901),

Gene: Wofford_75 Start: 55450, Stop: 55659, Start Num: 21

Candidate Starts for Wofford_75:

(9, 55390), (10, 55405), (Start: 16 @55429 has 1 MA's), (Start: 21 @55450 has 38 MA's), (36, 55549),

Gene: Yaboi_76 Start: 54358, Stop: 54546, Start Num: 23

Candidate Starts for Yaboi_76:

(10, 54307), (15, 54325), (Start: 18 @54343 has 1 MA's), (Start: 19 @54346 has 4 MA's), (Start: 23 @54358 has 23 MA's), (40, 54484), (41, 54487),