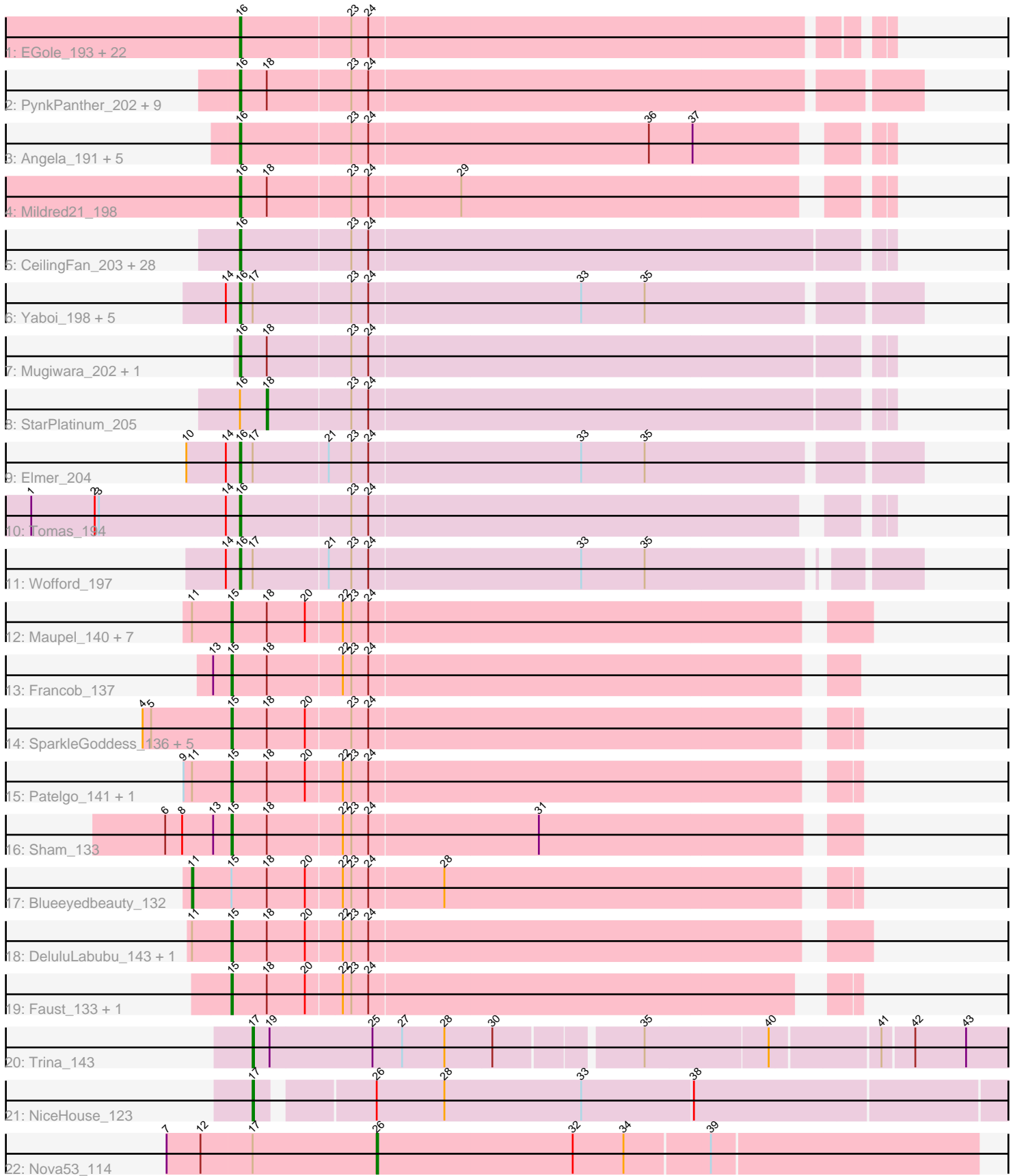


Pham 308358



Note: Tracks are now grouped by subcluster and scaled. Switching in subcluster is indicated by changes in track color. Track scale is now set by default to display the region 30 bp upstream of start 1 to 30 bp downstream of the last possible start. If this default region is judged to be packed too tightly with annotated starts, the track will be further scaled to only show that region of the ORF with annotated starts. This action will be indicated by adding "Zoomed" to the title. For starts, yellow indicates the location of called starts comprised solely of Glimmer/GeneMark auto-annotations, green indicates the location of called starts with at least 1 manual gene annotation.

Pham 308358 Report

This analysis was run 06/27/26 on database version 652.

Pham number 308358 has 107 members, 10 are drafts.

Phages represented in each track:

- Track 1 : EGole_193, WashU_192, Leo04_191, HangryHippo_189, Larnav_190, Coogler_188, Shuckle_187, Pepperwood_189, Riptide_185, BlueOtter_189, Teutsch_188, Cursive_190, Samisti12_192, Scheme_193, ArianaSWT_199, Tribute_187, Lululemon_188, LilSaint_185, PacManQ_188, Cross_189, Bmoc_193, Anedea_193, Sushi23_190
- Track 2 : PynkPanther_202, Bartholomune_189, Liandry_188, FreddyDRoo_191, Squillium_191, PinkiePie_188, Watermoore_189, NootNoot_185, Eliot67_189, Paradiddles_182
- Track 3 : Angela_191, MulchMansion_192, Daubenski_182, LilMartin_189, Marsus_192, Cadmus_185
- Track 4 : Mildred21_198
- Track 5 : CeilingFan_203, JimJam_206, Gibbi_206, Brizzy_198, Evy_182, SaltySpitoon_198, Bordeaux_197, Karimac_199, Quaran19_199, Rikishi_199, Jay2Jay_195, Targaryen_189, IchabodCrane_194, Jollison_196, Birchlyn_197, Daisy123_206, TomSawyer_203, Battuta_196, KentuckyRacer_205, Amabiko_203, Spelly_202, AcciDwight_206, MindFlayer_192, LukeCage_200, Starbow_196, PumpkinSpice_201, Wipeout_190, Spilled_205, Warpy_193
- Track 6 : Yaboi_198, Sollertia_194, BoomerJR_193, Stanimal_193, Genie2_193, AngryGiraffe_192
- Track 7 : Mugiwara_202, Enyigma_204
- Track 8 : StarPlatinum_205
- Track 9 : Elmer_204
- Track 10 : Tomas_194
- Track 11 : Wofford_197
- Track 12 : Maupel_140, MeganTheeKilla_138, Limpid_132, Emma1919_140, Phredrick_140, Kenrey_143, Gilson_140, Annadreamy_125
- Track 13 : Francob_137
- Track 14 : SparkleGoddess_136, Belfort_138, Comrade_134, Karp_134, Westy_140, Stigma_135
- Track 15 : Patelgo_141, Moab_138
- Track 16 : Sham_133
- Track 17 : Blueeyedbeauty_132
- Track 18 : DeluluLabubu_143, Beuffert_130
- Track 19 : Faust_133, SeresaTree_134
- Track 20 : Trina_143
- Track 21 : NiceHouse_123
- Track 22 : Nova53_114

Summary of Final Annotations (See graph section above for start numbers):

The start number called the most often in the published annotations is 16, it was called in 72 of the 97 non-draft genes in the pham.

Genes that call this "Most Annotated" start:

- AcciDwight_206, Amabiko_203, Anedea_193, Angela_191, AngryGiraffe_192, ArianaSWT_199, Bartholomune_189, Battuta_196, Birchlyn_197, BlueOtter_189, Bmoc_193, BoomerJR_193, Bordeaux_197, Brizzy_198, Cadmus_185, CeilingFan_203, Coogler_188, Cross_189, Cursive_190, Daisy123_206, Daubenski_182, EGole_193, Eliot67_189, Elmer_204, Enygma_204, Evy_182, FreddyDRoo_191, Genie2_193, Gibbi_206, HangryHippo_189, IchabodCrane_194, Jay2Jay_195, JimJam_206, Jollison_196, Karimac_199, KentuckyRacer_205, Larnav_190, Leo04_191, Liandry_188, LilMartin_189, LilSaint_185, LukeCage_200, Lululemon_188, Marsus_192, Mildred21_198, MindFlayer_192, Mugiwara_202, MulchMansion_192, NootNoot_185, PacManQ_188, Paradiddles_182, Pepperwood_189, PinkiePie_188, PumpkinSpice_201, PynkPanther_202, Quarant19_199, Rikishi_199, Riptide_185, SaltySpittoon_198, Samisti12_192, Scheme_193, Shuckle_187, Sollertia_194, Spelly_202, Spilled_205, Squillium_191, Stanimal_193, Starbow_196, Sushi23_190, Targaryen_189, Teutsch_188, TomSawyer_203, Tomas_194, Tribute_187, Warpy_193, WashU_192, Watermoore_189, Wipeout_190, Wofford_197, Yaboi_198,

Genes that have the "Most Annotated" start but do not call it:

- StarPlatinum_205,

Genes that do not have the "Most Annotated" start:

- Annadreamy_125, Belfort_138, Beuffert_130, Blueeyedbeauty_132, Comrade_134, DeluluLabubu_143, Emma1919_140, Faust_133, Francob_137, Gilson_140, Karp_134, Kenrey_143, Limpid_132, Maupel_140, MeganTheeKilla_138, Moab_138, NiceHouse_123, Nova53_114, Patelgo_141, Phredrick_140, SeresaTree_134, Sham_133, SparkleGoddess_136, Stigma_135, Trina_143, Westy_140,

Summary by start number:

Start 11:

- Found in 13 of 107 (12.1%) of genes in pham
- Manual Annotations of this start: 1 of 97
- Called 7.7% of time when present
- Phage (with cluster) where this start called: Blueeyedbeauty_132 (BK1),

Start 15:

- Found in 23 of 107 (21.5%) of genes in pham
- Manual Annotations of this start: 20 of 97
- Called 95.7% of time when present
- Phage (with cluster) where this start called: Annadreamy_125 (BK1), Belfort_138 (BK1), Beuffert_130 (BK1), Comrade_134 (BK1), DeluluLabubu_143 (BK1), Emma1919_140 (BK1), Faust_133 (BK1), Francob_137 (BK1), Gilson_140 (BK1), Karp_134 (BK1), Kenrey_143 (BK1), Limpid_132 (BK1), Maupel_140 (BK1),

MeganTheeKilla_138 (BK1), Moab_138 (BK1), Patelgo_141 (BK1), Phredrick_140 (BK1), SeresaTree_134 (BK1), Sham_133 (BK1), SparkleGoddess_136 (BK1), Stigma_135 (BK1), Westy_140 (BK1),

Start 16:

- Found in 81 of 107 (75.7%) of genes in pham
- Manual Annotations of this start: 72 of 97
- Called 98.8% of time when present
- Phage (with cluster) where this start called: AcciDwight_206 (BE2), Amabiko_203 (BE2), Anedea_193 (BE1), Angela_191 (BE1), AngryGiraffe_192 (BE2), ArianaSWT_199 (BE1), Bartholomune_189 (BE1), Battuta_196 (BE2), Birchlyn_197 (BE2), BlueOtter_189 (BE1), Bmoc_193 (BE1), BoomerJR_193 (BE2), Bordeaux_197 (BE2), Brizzy_198 (BE2), Cadmus_185 (BE1), CeilingFan_203 (BE2), Coogler_188 (BE1), Cross_189 (BE1), Cursive_190 (BE1), Daisy123_206 (BE2), Daubenski_182 (BE1), EGole_193 (BE1), Eliot67_189 (BE1), Elmer_204 (BE2), Enygma_204 (BE2), Evy_182 (BE1), FreddyDRoo_191 (BE1), Genie2_193 (BE2), Gibbi_206 (BE2), HangryHippo_189 (BE1), IchabodCrane_194 (BE2), Jay2Jay_195 (BE1), JimJam_206 (BE2), Jollison_196 (BE2), Karimac_199 (BE2), KentuckyRacer_205 (BE2), Larnav_190 (BE1), Leo04_191 (BE1), Liandry_188 (BE1), LilMartin_189 (BE1), LilSaint_185 (BE1), LukeCage_200 (BE2), Lululemon_188 (BE1), Marsus_192 (BE1), Mildred21_198 (BE1), MindFlayer_192 (BE2), Mugiwara_202 (BE2), MulchMansion_192 (BE1), NootNoot_185 (BE1), PacManQ_188 (BE1), Paradiddles_182 (BE1), Pepperwood_189 (BE1), PinkiePie_188 (BE1), PumpkinSpice_201 (BE2), PynkPanther_202 (BE1), Quarant19_199 (BE2), Rikishi_199 (BE2), Riptide_185 (BE1), SaltySpittoon_198 (BE2), Samisti12_192 (BE1), Scheme_193 (BE1), Shuckle_187 (BE1), Sollertia_194 (BE2), Spelly_202 (BE2), Spilled_205 (BE2), Squillium_191 (BE1), Stanimal_193 (BE2), Starbow_196 (BE2), Sushi23_190 (BE1), Targaryen_189 (BE1), Teutsch_188 (BE1), TomSawyer_203 (BE2), Tomas_194 (BE2), Tribute_187 (BE1), Warpy_193 (BE1), WashU_192 (BE1), Watermoore_189 (BE1), Wipeout_190 (BE2), Wofford_197 (BE2), Yaboi_198 (BE2),

Start 17:

- Found in 11 of 107 (10.3%) of genes in pham
- Manual Annotations of this start: 2 of 97
- Called 18.2% of time when present
- Phage (with cluster) where this start called: NiceHouse_123 (CE), Trina_143 (CE),

Start 18:

- Found in 37 of 107 (34.6%) of genes in pham
- Manual Annotations of this start: 1 of 97
- Called 2.7% of time when present
- Phage (with cluster) where this start called: StarPlatinum_205 (BE2),

Start 26:

- Found in 2 of 107 (1.9%) of genes in pham
- Manual Annotations of this start: 1 of 97
- Called 50.0% of time when present
- Phage (with cluster) where this start called: Nova53_114 (CG),

Summary by clusters:

There are 5 clusters represented in this pham: BE2, BE1, CG, BK1, CE,

Info for manual annotations of cluster BE1:

- Start number 16 was manually annotated 39 times for cluster BE1.

Info for manual annotations of cluster BE2:

- Start number 16 was manually annotated 33 times for cluster BE2.
- Start number 18 was manually annotated 1 time for cluster BE2.

Info for manual annotations of cluster BK1:

- Start number 11 was manually annotated 1 time for cluster BK1.
- Start number 15 was manually annotated 20 times for cluster BK1.

Info for manual annotations of cluster CE:

- Start number 17 was manually annotated 2 times for cluster CE.

Info for manual annotations of cluster CG:

- Start number 26 was manually annotated 1 time for cluster CG.

Gene Information:

Gene: AcciDwight_206 Start: 99844, Stop: 100284, Start Num: 16

Candidate Starts for AcciDwight_206:

(Start: 16 @99844 has 72 MA's), (23, 99919), (24, 99931),

Gene: Amabiko_203 Start: 99662, Stop: 100102, Start Num: 16

Candidate Starts for Amabiko_203:

(Start: 16 @99662 has 72 MA's), (23, 99737), (24, 99749),

Gene: Anedea_193 Start: 98951, Stop: 99385, Start Num: 16

Candidate Starts for Anedea_193:

(Start: 16 @98951 has 72 MA's), (23, 99026), (24, 99038),

Gene: Angela_191 Start: 98939, Stop: 99364, Start Num: 16

Candidate Starts for Angela_191:

(Start: 16 @98939 has 72 MA's), (23, 99014), (24, 99026), (36, 99221), (37, 99251),

Gene: AngryGiraffe_192 Start: 98521, Stop: 98979, Start Num: 16

Candidate Starts for AngryGiraffe_192:

(14, 98515), (Start: 16 @98521 has 72 MA's), (Start: 17 @98530 has 2 MA's), (23, 98596), (24, 98608), (33, 98755), (35, 98800),

Gene: Annadreamy_125 Start: 74035, Stop: 74451, Start Num: 15

Candidate Starts for Annadreamy_125:

(Start: 11 @74008 has 1 MA's), (Start: 15 @74035 has 20 MA's), (Start: 18 @74059 has 1 MA's), (20, 74086), (22, 74110), (23, 74116), (24, 74128),

Gene: ArianaSWT_199 Start: 100126, Stop: 100557, Start Num: 16

Candidate Starts for ArianaSWT_199:

(Start: 16 @100126 has 72 MA's), (23, 100201), (24, 100213),

Gene: Bartholomune_189 Start: 98638, Stop: 99096, Start Num: 16

Candidate Starts for Bartholomune_189:

(Start: 16 @98638 has 72 MA's), (Start: 18 @98656 has 1 MA's), (23, 98713), (24, 98725),

Gene: Battuta_196 Start: 98978, Stop: 99418, Start Num: 16

Candidate Starts for Battuta_196:

(Start: 16 @98978 has 72 MA's), (23, 99053), (24, 99065),

Gene: Belfort_138 Start: 80503, Stop: 80919, Start Num: 15

Candidate Starts for Belfort_138:

(4, 80440), (5, 80446), (Start: 15 @80503 has 20 MA's), (Start: 18 @80527 has 1 MA's), (20, 80554), (23, 80584), (24, 80596),

Gene: Beuffert_130 Start: 78356, Stop: 78772, Start Num: 15

Candidate Starts for Beuffert_130:

(Start: 11 @78329 has 1 MA's), (Start: 15 @78356 has 20 MA's), (Start: 18 @78380 has 1 MA's), (20, 78407), (22, 78431), (23, 78437), (24, 78449),

Gene: Birchlyn_197 Start: 96910, Stop: 97350, Start Num: 16

Candidate Starts for Birchlyn_197:

(Start: 16 @96910 has 72 MA's), (23, 96985), (24, 96997),

Gene: BlueOtter_189 Start: 99455, Stop: 99886, Start Num: 16

Candidate Starts for BlueOtter_189:

(Start: 16 @99455 has 72 MA's), (23, 99530), (24, 99542),

Gene: Blueeyedbeauty_132 Start: 77762, Stop: 78205, Start Num: 11

Candidate Starts for Blueeyedbeauty_132:

(Start: 11 @77762 has 1 MA's), (Start: 15 @77789 has 20 MA's), (Start: 18 @77813 has 1 MA's), (20, 77840), (22, 77864), (23, 77870), (24, 77882), (28, 77933),

Gene: Bmoc_193 Start: 99451, Stop: 99876, Start Num: 16

Candidate Starts for Bmoc_193:

(Start: 16 @99451 has 72 MA's), (23, 99526), (24, 99538),

Gene: BoomerJR_193 Start: 98954, Stop: 99412, Start Num: 16

Candidate Starts for BoomerJR_193:

(14, 98948), (Start: 16 @98954 has 72 MA's), (Start: 17 @98963 has 2 MA's), (23, 99029), (24, 99041), (33, 99188), (35, 99233),

Gene: Bordeaux_197 Start: 99561, Stop: 100001, Start Num: 16

Candidate Starts for Bordeaux_197:

(Start: 16 @99561 has 72 MA's), (23, 99636), (24, 99648),

Gene: Brizzy_198 Start: 100106, Stop: 100537, Start Num: 16

Candidate Starts for Brizzy_198:

(Start: 16 @100106 has 72 MA's), (23, 100181), (24, 100193),

Gene: Cadmus_185 Start: 99340, Stop: 99765, Start Num: 16

Candidate Starts for Cadmus_185:

(Start: 16 @99340 has 72 MA's), (23, 99415), (24, 99427), (36, 99622), (37, 99652),

Gene: CeilingFan_203 Start: 100355, Stop: 100795, Start Num: 16

Candidate Starts for CeilingFan_203:

(Start: 16 @100355 has 72 MA's), (23, 100430), (24, 100442),

Gene: Comrade_134 Start: 79822, Stop: 80238, Start Num: 15

Candidate Starts for Comrade_134:

(4, 79759), (5, 79765), (Start: 15 @79822 has 20 MA's), (Start: 18 @79846 has 1 MA's), (20, 79873), (23, 79903), (24, 79915),

Gene: Coogler_188 Start: 100124, Stop: 100555, Start Num: 16

Candidate Starts for Coogler_188:

(Start: 16 @100124 has 72 MA's), (23, 100199), (24, 100211),

Gene: Cross_189 Start: 100100, Stop: 100531, Start Num: 16

Candidate Starts for Cross_189:

(Start: 16 @100100 has 72 MA's), (23, 100175), (24, 100187),

Gene: Cursive_190 Start: 99002, Stop: 99433, Start Num: 16

Candidate Starts for Cursive_190:

(Start: 16 @99002 has 72 MA's), (23, 99077), (24, 99089),

Gene: Daisy123_206 Start: 100217, Stop: 100657, Start Num: 16

Candidate Starts for Daisy123_206:

(Start: 16 @100217 has 72 MA's), (23, 100292), (24, 100304),

Gene: Daubenski_182 Start: 99870, Stop: 100295, Start Num: 16

Candidate Starts for Daubenski_182:

(Start: 16 @99870 has 72 MA's), (23, 99945), (24, 99957), (36, 100152), (37, 100182),

Gene: DeluluLabubu_143 Start: 81268, Stop: 81693, Start Num: 15

Candidate Starts for DeluluLabubu_143:

(Start: 11 @81241 has 1 MA's), (Start: 15 @81268 has 20 MA's), (Start: 18 @81292 has 1 MA's), (20, 81319), (22, 81343), (23, 81349), (24, 81361),

Gene: EGole_193 Start: 101755, Stop: 102186, Start Num: 16

Candidate Starts for EGole_193:

(Start: 16 @101755 has 72 MA's), (23, 101830), (24, 101842),

Gene: Eliot67_189 Start: 98250, Stop: 98708, Start Num: 16

Candidate Starts for Eliot67_189:

(Start: 16 @98250 has 72 MA's), (Start: 18 @98268 has 1 MA's), (23, 98325), (24, 98337),

Gene: Elmer_204 Start: 102392, Stop: 102850, Start Num: 16

Candidate Starts for Elmer_204:

(10, 102359), (14, 102386), (Start: 16 @102392 has 72 MA's), (Start: 17 @102401 has 2 MA's), (21, 102452), (23, 102467), (24, 102479), (33, 102626), (35, 102671),

Gene: Emma1919_140 Start: 79688, Stop: 80113, Start Num: 15

Candidate Starts for Emma1919_140:

(Start: 11 @79661 has 1 MA's), (Start: 15 @79688 has 20 MA's), (Start: 18 @79712 has 1 MA's), (20, 79739), (22, 79763), (23, 79769), (24, 79781),

Gene: Enygma_204 Start: 102186, Stop: 102626, Start Num: 16

Candidate Starts for Enygma_204:

(Start: 16 @102186 has 72 MA's), (Start: 18 @102204 has 1 MA's), (23, 102261), (24, 102273),

Gene: Evy_182 Start: 99932, Stop: 100363, Start Num: 16
Candidate Starts for Evy_182:
(Start: 16 @99932 has 72 MA's), (23, 100007), (24, 100019),

Gene: Faust_133 Start: 80653, Stop: 81063, Start Num: 15
Candidate Starts for Faust_133:
(Start: 15 @80653 has 20 MA's), (Start: 18 @80677 has 1 MA's), (20, 80704), (22, 80728), (23, 80734),
(24, 80746),

Gene: Francob_137 Start: 79881, Stop: 80297, Start Num: 15
Candidate Starts for Francob_137:
(13, 79869), (Start: 15 @79881 has 20 MA's), (Start: 18 @79905 has 1 MA's), (22, 79956), (23, 79962),
(24, 79974),

Gene: FreddyDRoo_191 Start: 98250, Stop: 98708, Start Num: 16
Candidate Starts for FreddyDRoo_191:
(Start: 16 @98250 has 72 MA's), (Start: 18 @98268 has 1 MA's), (23, 98325), (24, 98337),

Gene: Genie2_193 Start: 99068, Stop: 99526, Start Num: 16
Candidate Starts for Genie2_193:
(14, 99062), (Start: 16 @99068 has 72 MA's), (Start: 17 @99077 has 2 MA's), (23, 99143), (24, 99155),
(33, 99302), (35, 99347),

Gene: Gibbi_206 Start: 99848, Stop: 100288, Start Num: 16
Candidate Starts for Gibbi_206:
(Start: 16 @99848 has 72 MA's), (23, 99923), (24, 99935),

Gene: Gilson_140 Start: 79650, Stop: 80075, Start Num: 15
Candidate Starts for Gilson_140:
(Start: 11 @79623 has 1 MA's), (Start: 15 @79650 has 20 MA's), (Start: 18 @79674 has 1 MA's), (20,
79701), (22, 79725), (23, 79731), (24, 79743),

Gene: HangryHippo_189 Start: 99455, Stop: 99886, Start Num: 16
Candidate Starts for HangryHippo_189:
(Start: 16 @99455 has 72 MA's), (23, 99530), (24, 99542),

Gene: IchabodCrane_194 Start: 99363, Stop: 99803, Start Num: 16
Candidate Starts for IchabodCrane_194:
(Start: 16 @99363 has 72 MA's), (23, 99438), (24, 99450),

Gene: Jay2Jay_195 Start: 100434, Stop: 100865, Start Num: 16
Candidate Starts for Jay2Jay_195:
(Start: 16 @100434 has 72 MA's), (23, 100509), (24, 100521),

Gene: JimJam_206 Start: 101284, Stop: 101724, Start Num: 16
Candidate Starts for JimJam_206:
(Start: 16 @101284 has 72 MA's), (23, 101359), (24, 101371),

Gene: Jollison_196 Start: 99494, Stop: 99934, Start Num: 16
Candidate Starts for Jollison_196:
(Start: 16 @99494 has 72 MA's), (23, 99569), (24, 99581),

Gene: Karimac_199 Start: 99688, Stop: 100128, Start Num: 16
Candidate Starts for Karimac_199:
(Start: 16 @99688 has 72 MA's), (23, 99763), (24, 99775),

Gene: Karp_134 Start: 79930, Stop: 80346, Start Num: 15
Candidate Starts for Karp_134:
(4, 79867), (5, 79873), (Start: 15 @79930 has 20 MA's), (Start: 18 @79954 has 1 MA's), (20, 79981),
(23, 80011), (24, 80023),

Gene: Kenrey_143 Start: 81179, Stop: 81604, Start Num: 15
Candidate Starts for Kenrey_143:
(Start: 11 @81152 has 1 MA's), (Start: 15 @81179 has 20 MA's), (Start: 18 @81203 has 1 MA's), (20,
81230), (22, 81254), (23, 81260), (24, 81272),

Gene: KentuckyRacer_205 Start: 101199, Stop: 101639, Start Num: 16
Candidate Starts for KentuckyRacer_205:
(Start: 16 @101199 has 72 MA's), (23, 101274), (24, 101286),

Gene: Larnav_190 Start: 100075, Stop: 100506, Start Num: 16
Candidate Starts for Larnav_190:
(Start: 16 @100075 has 72 MA's), (23, 100150), (24, 100162),

Gene: Leo04_191 Start: 100466, Stop: 100897, Start Num: 16
Candidate Starts for Leo04_191:
(Start: 16 @100466 has 72 MA's), (23, 100541), (24, 100553),

Gene: Liandry_188 Start: 98957, Stop: 99415, Start Num: 16
Candidate Starts for Liandry_188:
(Start: 16 @98957 has 72 MA's), (Start: 18 @98975 has 1 MA's), (23, 99032), (24, 99044),

Gene: LilMartin_189 Start: 98558, Stop: 98983, Start Num: 16
Candidate Starts for LilMartin_189:
(Start: 16 @98558 has 72 MA's), (23, 98633), (24, 98645), (36, 98840), (37, 98870),

Gene: LilSaint_185 Start: 98113, Stop: 98547, Start Num: 16
Candidate Starts for LilSaint_185:
(Start: 16 @98113 has 72 MA's), (23, 98188), (24, 98200),

Gene: Limpid_132 Start: 79343, Stop: 79759, Start Num: 15
Candidate Starts for Limpid_132:
(Start: 11 @79316 has 1 MA's), (Start: 15 @79343 has 20 MA's), (Start: 18 @79367 has 1 MA's), (20,
79394), (22, 79418), (23, 79424), (24, 79436),

Gene: LukeCage_200 Start: 100792, Stop: 101232, Start Num: 16
Candidate Starts for LukeCage_200:
(Start: 16 @100792 has 72 MA's), (23, 100867), (24, 100879),

Gene: Lululemon_188 Start: 98836, Stop: 99267, Start Num: 16
Candidate Starts for Lululemon_188:
(Start: 16 @98836 has 72 MA's), (23, 98911), (24, 98923),

Gene: Marsus_192 Start: 99690, Stop: 100115, Start Num: 16
Candidate Starts for Marsus_192:

(Start: 16 @99690 has 72 MA's), (23, 99765), (24, 99777), (36, 99972), (37, 100002),

Gene: Maupel_140 Start: 79650, Stop: 80075, Start Num: 15

Candidate Starts for Maupel_140:

(Start: 11 @79623 has 1 MA's), (Start: 15 @79650 has 20 MA's), (Start: 18 @79674 has 1 MA's), (20, 79701), (22, 79725), (23, 79731), (24, 79743),

Gene: MeganTheeKilla_138 Start: 79730, Stop: 80155, Start Num: 15

Candidate Starts for MeganTheeKilla_138:

(Start: 11 @79703 has 1 MA's), (Start: 15 @79730 has 20 MA's), (Start: 18 @79754 has 1 MA's), (20, 79781), (22, 79805), (23, 79811), (24, 79823),

Gene: Mildred21_198 Start: 98073, Stop: 98498, Start Num: 16

Candidate Starts for Mildred21_198:

(Start: 16 @98073 has 72 MA's), (Start: 18 @98091 has 1 MA's), (23, 98148), (24, 98160), (29, 98223),

Gene: MindFlayer_192 Start: 98879, Stop: 99319, Start Num: 16

Candidate Starts for MindFlayer_192:

(Start: 16 @98879 has 72 MA's), (23, 98954), (24, 98966),

Gene: Moab_138 Start: 82022, Stop: 82438, Start Num: 15

Candidate Starts for Moab_138:

(9, 81989), (Start: 11 @81995 has 1 MA's), (Start: 15 @82022 has 20 MA's), (Start: 18 @82046 has 1 MA's), (20, 82073), (22, 82097), (23, 82103), (24, 82115),

Gene: Mugiwara_202 Start: 101015, Stop: 101455, Start Num: 16

Candidate Starts for Mugiwara_202:

(Start: 16 @101015 has 72 MA's), (Start: 18 @101033 has 1 MA's), (23, 101090), (24, 101102),

Gene: MulchMansion_192 Start: 99938, Stop: 100363, Start Num: 16

Candidate Starts for MulchMansion_192:

(Start: 16 @99938 has 72 MA's), (23, 100013), (24, 100025), (36, 100220), (37, 100250),

Gene: NiceHouse_123 Start: 82089, Stop: 82613, Start Num: 17

Candidate Starts for NiceHouse_123:

(Start: 17 @82089 has 2 MA's), (Start: 26 @82161 has 1 MA's), (28, 82209), (33, 82305), (38, 82383),

Gene: NootNoot_185 Start: 97746, Stop: 98204, Start Num: 16

Candidate Starts for NootNoot_185:

(Start: 16 @97746 has 72 MA's), (Start: 18 @97764 has 1 MA's), (23, 97821), (24, 97833),

Gene: Nova53_114 Start: 77601, Stop: 78017, Start Num: 26

Candidate Starts for Nova53_114:

(7, 77454), (12, 77478), (Start: 17 @77514 has 2 MA's), (Start: 26 @77601 has 1 MA's), (32, 77739), (34, 77775), (39, 77832),

Gene: PacManQ_188 Start: 98836, Stop: 99267, Start Num: 16

Candidate Starts for PacManQ_188:

(Start: 16 @98836 has 72 MA's), (23, 98911), (24, 98923),

Gene: Paradiddles_182 Start: 100559, Stop: 101017, Start Num: 16

Candidate Starts for Paradiddles_182:

(Start: 16 @100559 has 72 MA's), (Start: 18 @100577 has 1 MA's), (23, 100634), (24, 100646),

Gene: Patelgo_141 Start: 82714, Stop: 83130, Start Num: 15

Candidate Starts for Patelgo_141:

(9, 82681), (Start: 11 @82687 has 1 MA's), (Start: 15 @82714 has 20 MA's), (Start: 18 @82738 has 1 MA's), (20, 82765), (22, 82789), (23, 82795), (24, 82807),

Gene: Pepperwood_189 Start: 99706, Stop: 100137, Start Num: 16

Candidate Starts for Pepperwood_189:

(Start: 16 @99706 has 72 MA's), (23, 99781), (24, 99793),

Gene: Phredrick_140 Start: 79491, Stop: 79916, Start Num: 15

Candidate Starts for Phredrick_140:

(Start: 11 @79464 has 1 MA's), (Start: 15 @79491 has 20 MA's), (Start: 18 @79515 has 1 MA's), (20, 79542), (22, 79566), (23, 79572), (24, 79584),

Gene: PinkiePie_188 Start: 98957, Stop: 99415, Start Num: 16

Candidate Starts for PinkiePie_188:

(Start: 16 @98957 has 72 MA's), (Start: 18 @98975 has 1 MA's), (23, 99032), (24, 99044),

Gene: PumpkinSpice_201 Start: 100100, Stop: 100540, Start Num: 16

Candidate Starts for PumpkinSpice_201:

(Start: 16 @100100 has 72 MA's), (23, 100175), (24, 100187),

Gene: PynkPanther_202 Start: 100267, Stop: 100725, Start Num: 16

Candidate Starts for PynkPanther_202:

(Start: 16 @100267 has 72 MA's), (Start: 18 @100285 has 1 MA's), (23, 100342), (24, 100354),

Gene: Quaran19_199 Start: 99541, Stop: 99981, Start Num: 16

Candidate Starts for Quaran19_199:

(Start: 16 @99541 has 72 MA's), (23, 99616), (24, 99628),

Gene: Rikishi_199 Start: 99822, Stop: 100262, Start Num: 16

Candidate Starts for Rikishi_199:

(Start: 16 @99822 has 72 MA's), (23, 99897), (24, 99909),

Gene: Riptide_185 Start: 97590, Stop: 98024, Start Num: 16

Candidate Starts for Riptide_185:

(Start: 16 @97590 has 72 MA's), (23, 97665), (24, 97677),

Gene: SaltySpittoon_198 Start: 99083, Stop: 99523, Start Num: 16

Candidate Starts for SaltySpittoon_198:

(Start: 16 @99083 has 72 MA's), (23, 99158), (24, 99170),

Gene: Samisti12_192 Start: 101162, Stop: 101593, Start Num: 16

Candidate Starts for Samisti12_192:

(Start: 16 @101162 has 72 MA's), (23, 101237), (24, 101249),

Gene: Scheme_193 Start: 101343, Stop: 101774, Start Num: 16

Candidate Starts for Scheme_193:

(Start: 16 @101343 has 72 MA's), (23, 101418), (24, 101430),

Gene: SeresaTree_134 Start: 80035, Stop: 80445, Start Num: 15

Candidate Starts for SeresaTree_134:

(Start: 15 @80035 has 20 MA's), (Start: 18 @80059 has 1 MA's), (20, 80086), (22, 80110), (23, 80116), (24, 80128),

Gene: Sham_133 Start: 80587, Stop: 81006, Start Num: 15

Candidate Starts for Sham_133:

(6, 80542), (8, 80554), (13, 80575), (Start: 15 @80587 has 20 MA's), (Start: 18 @80611 has 1 MA's), (22, 80662), (23, 80668), (24, 80680), (31, 80797),

Gene: Shuckle_187 Start: 99806, Stop: 100246, Start Num: 16

Candidate Starts for Shuckle_187:

(Start: 16 @99806 has 72 MA's), (23, 99881), (24, 99893),

Gene: Sollertia_194 Start: 99068, Stop: 99526, Start Num: 16

Candidate Starts for Sollertia_194:

(14, 99062), (Start: 16 @99068 has 72 MA's), (Start: 17 @99077 has 2 MA's), (23, 99143), (24, 99155), (33, 99302), (35, 99347),

Gene: SparkleGoddess_136 Start: 80122, Stop: 80538, Start Num: 15

Candidate Starts for SparkleGoddess_136:

(4, 80059), (5, 80065), (Start: 15 @80122 has 20 MA's), (Start: 18 @80146 has 1 MA's), (20, 80173), (23, 80203), (24, 80215),

Gene: Spelly_202 Start: 99012, Stop: 99452, Start Num: 16

Candidate Starts for Spelly_202:

(Start: 16 @99012 has 72 MA's), (23, 99087), (24, 99099),

Gene: Spilled_205 Start: 100216, Stop: 100656, Start Num: 16

Candidate Starts for Spilled_205:

(Start: 16 @100216 has 72 MA's), (23, 100291), (24, 100303),

Gene: Squillium_191 Start: 98959, Stop: 99417, Start Num: 16

Candidate Starts for Squillium_191:

(Start: 16 @98959 has 72 MA's), (Start: 18 @98977 has 1 MA's), (23, 99034), (24, 99046),

Gene: Stanimal_193 Start: 99429, Stop: 99887, Start Num: 16

Candidate Starts for Stanimal_193:

(14, 99423), (Start: 16 @99429 has 72 MA's), (Start: 17 @99438 has 2 MA's), (23, 99504), (24, 99516), (33, 99663), (35, 99708),

Gene: StarPlatinum_205 Start: 101499, Stop: 101921, Start Num: 18

Candidate Starts for StarPlatinum_205:

(Start: 16 @101481 has 72 MA's), (Start: 18 @101499 has 1 MA's), (23, 101556), (24, 101568),

Gene: Starbow_196 Start: 99056, Stop: 99496, Start Num: 16

Candidate Starts for Starbow_196:

(Start: 16 @99056 has 72 MA's), (23, 99131), (24, 99143),

Gene: Stigma_135 Start: 80267, Stop: 80683, Start Num: 15

Candidate Starts for Stigma_135:

(4, 80204), (5, 80210), (Start: 15 @80267 has 20 MA's), (Start: 18 @80291 has 1 MA's), (20, 80318), (23, 80348), (24, 80360),

Gene: Sushi23_190 Start: 100812, Stop: 101243, Start Num: 16

Candidate Starts for Sushi23_190:

(Start: 16 @100812 has 72 MA's), (23, 100887), (24, 100899),

Gene: Targaryen_189 Start: 100963, Stop: 101394, Start Num: 16

Candidate Starts for Targaryen_189:

(Start: 16 @100963 has 72 MA's), (23, 101038), (24, 101050),

Gene: Teutsch_188 Start: 100260, Stop: 100691, Start Num: 16

Candidate Starts for Teutsch_188:

(Start: 16 @100260 has 72 MA's), (23, 100335), (24, 100347),

Gene: TomSawyer_203 Start: 101527, Stop: 101967, Start Num: 16

Candidate Starts for TomSawyer_203:

(Start: 16 @101527 has 72 MA's), (23, 101602), (24, 101614),

Gene: Tomas_194 Start: 99352, Stop: 99777, Start Num: 16

Candidate Starts for Tomas_194:

(1, 99205), (2, 99250), (3, 99253), (14, 99343), (Start: 16 @99352 has 72 MA's), (23, 99427), (24, 99439),

Gene: Tribute_187 Start: 100277, Stop: 100708, Start Num: 16

Candidate Starts for Tribute_187:

(Start: 16 @100277 has 72 MA's), (23, 100352), (24, 100364),

Gene: Trina_143 Start: 88112, Stop: 88633, Start Num: 17

Candidate Starts for Trina_143:

(Start: 17 @88112 has 2 MA's), (19, 88124), (25, 88196), (27, 88217), (28, 88247), (30, 88280), (35, 88376), (40, 88460), (41, 88532), (42, 88553), (43, 88589),

Gene: Warpy_193 Start: 99875, Stop: 100306, Start Num: 16

Candidate Starts for Warpy_193:

(Start: 16 @99875 has 72 MA's), (23, 99950), (24, 99962),

Gene: WashU_192 Start: 100351, Stop: 100782, Start Num: 16

Candidate Starts for WashU_192:

(Start: 16 @100351 has 72 MA's), (23, 100426), (24, 100438),

Gene: Watermoore_189 Start: 101098, Stop: 101529, Start Num: 16

Candidate Starts for Watermoore_189:

(Start: 16 @101098 has 72 MA's), (Start: 18 @101116 has 1 MA's), (23, 101173), (24, 101185),

Gene: Westy_140 Start: 81156, Stop: 81572, Start Num: 15

Candidate Starts for Westy_140:

(4, 81093), (5, 81099), (Start: 15 @81156 has 20 MA's), (Start: 18 @81180 has 1 MA's), (20, 81207), (23, 81237), (24, 81249),

Gene: Wipeout_190 Start: 100479, Stop: 100919, Start Num: 16

Candidate Starts for Wipeout_190:

(Start: 16 @100479 has 72 MA's), (23, 100554), (24, 100566),

Gene: Wofford_197 Start: 102352, Stop: 102801, Start Num: 16

Candidate Starts for Wofford_197:

(14, 102346), (Start: 16 @102352 has 72 MA's), (Start: 17 @102361 has 2 MA's), (21, 102412), (23, 102427), (24, 102439), (33, 102586), (35, 102631),

Gene: Yaboi_198 Start: 99003, Stop: 99461, Start Num: 16

Candidate Starts for Yaboi_198:

(14, 98997), (Start: 16 @99003 has 72 MA's), (Start: 17 @99012 has 2 MA's), (23, 99078), (24, 99090), (33, 99237), (35, 99282),