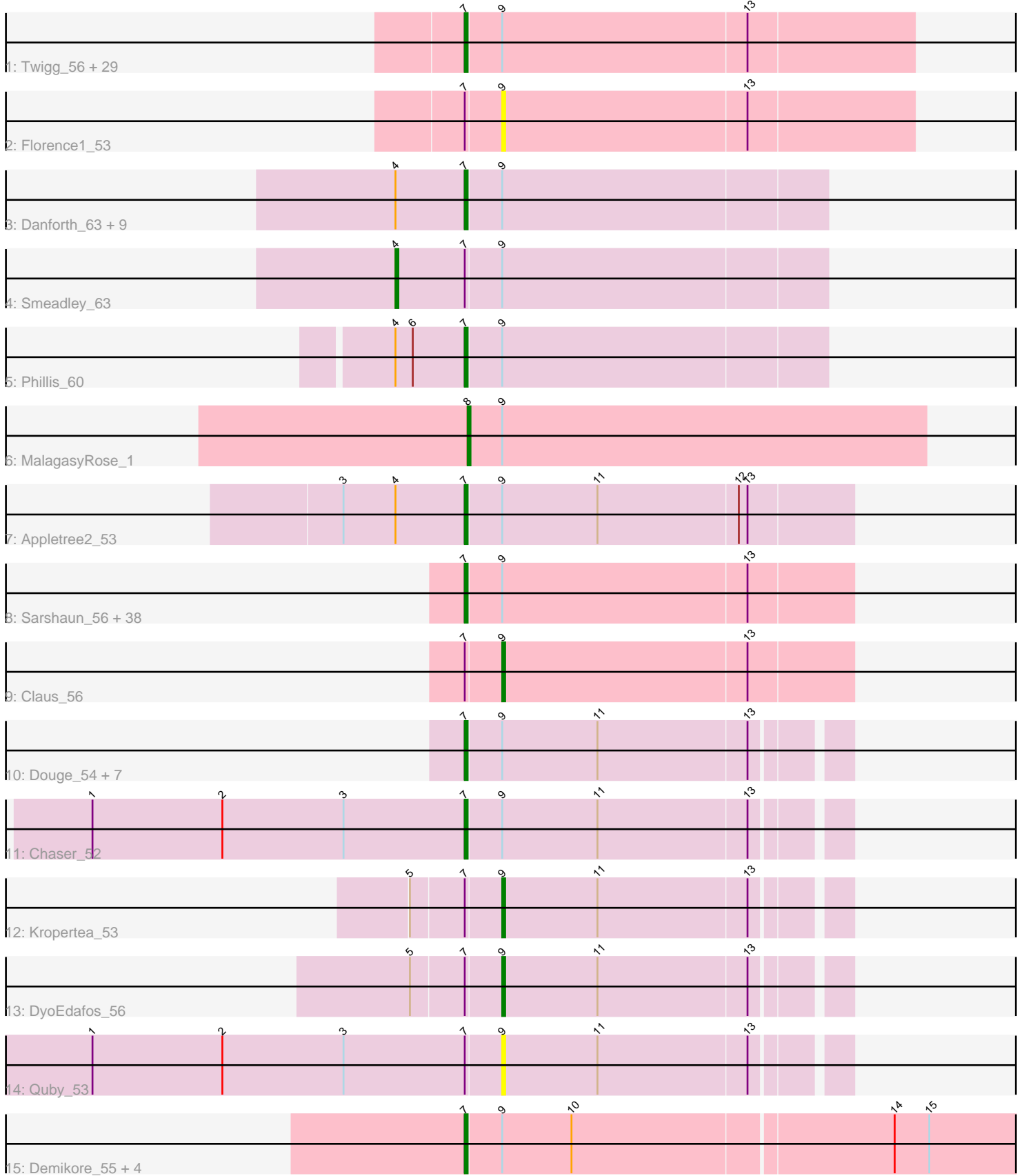


Pham 308373



Note: Tracks are now grouped by subcluster and scaled. Switching in subcluster is indicated by changes in track color. Track scale is now set by default to display the region 30 bp upstream of start 1 to 30 bp downstream of the last possible start. If this default region is judged to be packed too tightly with annotated starts, the track will be further scaled to only show that region of the ORF with annotated starts. This action will be indicated by adding "Zoomed" to the title. For starts, yellow indicates the location of called starts comprised solely of Glimmer/GeneMark auto-annotations, green indicates the location of called starts with at least 1 manual gene annotation.

Pham 308373 Report

This analysis was run 06/27/26 on database version 652.

Pham number 308373 has 102 members, 20 are drafts.

Phages represented in each track:

- Track 1 : Twigg_56, SydNat_59, ForGetIt_58, Aragog_57, Tarynearal_54, Discoknowium_56, Jovo_58, Dublin_57, Conspiracy_58, HuhtaEnerson15_56, Bonamassa_55, Prinash11_55, Florence4_55, Phlorence_56, Milcery_56, PickleBack_58, Lev2_58, Ghoulboy_59, MarysWell_57, AgentM_57, Theia_56, George_54, Cuco_57, Swirley_58, Archetta_57, Zolita_58, Bluefalcon_55, Tiger_57, LittleCherry_56, Micasa_57
- Track 2 : Florence1_53
- Track 3 : Danforth_63, Roary_64, Saintus_58, Stephig9_62, Expelliarmus_60, Astro_63, Dixon_62, NearlyHeadless_63, Caitlin_62, Groundhog_62
- Track 4 : Smeadley_63
- Track 5 : Phillis_60
- Track 6 : MalagasyRose_1
- Track 7 : Appletree2_53
- Track 8 : Sarshaun_56, Wigglewobble_56, Zakai_57, Kahlid_56, Tourach_55, Baoshan_55, Hafay_57, DrSeegs_56, Crossroads_56, Vetric_56, Soap141_56, Nicholasp3_56, SoJulia_58, Gabriela_53, ZhongYanYuan_54, Itos_55, Winky_56, Breezona_56, Lynnae_57, Rossetti_57, Finemlucis_56, DHan_57, BobsGarage_56, Gardann_57, Wilder_57, Loadrie_55, Bazzle_56, OverPar_57, Rumpelstiltskin_55, GuuelaD_55, BigCheese_56, Faith1_56, MkaliMitinis3_57, Miley16_56, Netyap_57, Archie_56, LilDestine_56, DanBing_56, Lewan_57
- Track 9 : Claus_56
- Track 10 : Douge_54, PYPDinur_52, BrainDrainer_54, FarmResident_55, ChutneyChips_54, Sheng711_54, Bromden_55, Douzhi_54
- Track 11 : Chaser_52
- Track 12 : Kropertea_53
- Track 13 : DyoEdafos_56
- Track 14 : Quby_53
- Track 15 : Demikore_55, Patience_55, Labelle_54, SuperSonics_55, Madruga_53

Summary of Final Annotations (See graph section above for start numbers):

The start number called the most often in the published annotations is 7, it was called in 77 of the 82 non-draft genes in the pham.

Genes that call this "Most Annotated" start:

- AgentM_57, Appletree2_53, Aragog_57, Archetta_57, Archie_56, Astro_63, Baoshan_55, Bazzle_56, BigCheese_56, Bluefalcon_55, BobsGarage_56, Bonamassa_55, BrainDrainer_54, Breezona_56, Bromden_55, Caitlin_62, Chaser_52, ChutneyChips_54, Conspiracy_58, Crossroads_56, Cuco_57, DHan_57, DanBing_56, Danforth_63, Demikore_55, Discoknowium_56, Dixon_62, Douge_54, Douzhi_54, DrSeegs_56, Dublin_57, Expelliarmus_60, Faith1_56, FarmResident_55, Finemlucis_56, Florence4_55, ForGetIt_58, Gabriela_53, Gardann_57, George_54, Ghoulboy_59, Groundhog_62, GuuelaD_55, Hafay_57, HuhtaEnerson15_56, Itos_55, Jovo_58, Kahlid_56, Labelle_54, Lev2_58, Lewan_57, LilDestine_56, LittleCherry_56, Loadrie_55, Lynnae_57, Madrugua_53, MarysWell_57, Micasa_57, Milcery_56, Miley16_56, MkaliMitinis3_57, NearlyHeadless_63, Netyap_57, Nicholasp3_56, OverPar_57, PYPDinur_52, Patience_55, Phillis_60, Phlorence_56, PickleBack_58, Prinash11_55, Roary_64, Rossetti_57, Rumpelstiltskin_55, Saintus_58, Sarshaun_56, Sheng711_54, SoJulia_58, Soap141_56, StepHig9_62, SuperSonics_55, Swirley_58, SydNat_59, Tarynearal_54, Theia_56, Tiger_57, Tourach_55, Twigg_56, Vetrix_56, Wigglewiggle_56, Wilder_57, Winky_56, Zakai_57, ZhongYanYuan_54, Zolita_58,

Genes that have the "Most Annotated" start but do not call it:

- Claus_56, DyoEdafos_56, Florence1_53, Kropertea_53, Quby_53, Smeadley_63,

Genes that do not have the "Most Annotated" start:

- MalagasyRose_1,

Summary by start number:

Start 4:

- Found in 13 of 102 (12.7%) of genes in pham
- Manual Annotations of this start: 1 of 82
- Called 7.7% of time when present
- Phage (with cluster) where this start called: Smeadley_63 (A8),

Start 7:

- Found in 101 of 102 (99.0%) of genes in pham
- Manual Annotations of this start: 77 of 82
- Called 94.1% of time when present
- Phage (with cluster) where this start called: AgentM_57 (A5), Appletree2_53 (L1), Aragog_57 (A5), Archetta_57 (A5), Archie_56 (L2), Astro_63 (A8), Baoshan_55 (L2), Bazzle_56 (L2), BigCheese_56 (L2), Bluefalcon_55 (A5), BobsGarage_56 (L2), Bonamassa_55 (A5), BrainDrainer_54 (L4), Breezona_56 (L2), Bromden_55 (L4), Caitlin_62 (A8), Chaser_52 (L4), ChutneyChips_54 (L4), Conspiracy_58 (A5), Crossroads_56 (L2), Cuco_57 (A5), DHan_57 (L2), DanBing_56 (L2), Danforth_63 (A8), Demikore_55 (U), Discoknowium_56 (A5), Dixon_62 (A8), Douge_54 (L4), Douzhi_54 (L4), DrSeegs_56 (L2), Dublin_57 (A5), Expelliarmus_60 (A8), Faith1_56 (L2), FarmResident_55 (L4), Finemlucis_56 (L2), Florence4_55 (A5), ForGetIt_58 (A5), Gabriela_53 (L2), Gardann_57 (L2), George_54 (A5), Ghoulboy_59 (A5), Groundhog_62 (A8), GuuelaD_55 (L2), Hafay_57 (L2), HuhtaEnerson15_56 (A5), Itos_55 (L2), Jovo_58 (A5), Kahlid_56 (L2), Labelle_54 (U), Lev2_58 (A5), Lewan_57 (L2), LilDestine_56 (L2), LittleCherry_56 (A5), Loadrie_55 (L2), Lynnae_57 (L2), Madrugua_53 (U), MarysWell_57 (A5), Micasa_57 (A5), Milcery_56 (A5), Miley16_56 (L2), MkaliMitinis3_57 (L2), NearlyHeadless_63 (A8), Netyap_57 (L2), Nicholasp3_56 (L2), OverPar_57 (L2), PYPDinur_52 (L4), Patience_55 (U), Phillis_60 (A8),

Phlorence_56 (A5), PickleBack_58 (A5), Prin Ashe11_55 (A5), Roary_64 (A8), Rossetti_57 (L2), Rumpelstiltskin_55 (L2), Saintus_58 (A8), Sarshaun_56 (L2), Sheng711_54 (L4), SoJulia_58 (L2), Soap141_56 (L2), Stephig9_62 (A8), SuperSonics_55 (U), Swirley_58 (A5), SydNat_59 (A5), Tarynearal_54 (A5), Theia_56 (A5), Tiger_57 (A5), Tourach_55 (L2), Twigg_56 (A5), Vetrix_56 (L2), Wigglewiggles_56 (L2), Wilder_57 (L2), Winky_56 (L2), Zakai_57 (L2), ZhongYanYuan_54 (L2), Zolita_58 (A5),

Start 8:

- Found in 1 of 102 (1.0%) of genes in pham
- Manual Annotations of this start: 1 of 82
- Called 100.0% of time when present
- Phage (with cluster) where this start called: MalagasyRose_1 (AG),

Start 9:

- Found in 102 of 102 (100.0%) of genes in pham
- Manual Annotations of this start: 3 of 82
- Called 4.9% of time when present
- Phage (with cluster) where this start called: Claus_56 (L2), DyoEdafos_56 (L4), Florence1_53 (A5), Kropertea_53 (L4), Quby_53 (L4),

Summary by clusters:

There are 7 clusters represented in this pham: AG, A8, L4, A5, L1, L2, U,

Info for manual annotations of cluster A5:

- Start number 7 was manually annotated 28 times for cluster A5.

Info for manual annotations of cluster A8:

- Start number 4 was manually annotated 1 time for cluster A8.
- Start number 7 was manually annotated 11 times for cluster A8.

Info for manual annotations of cluster AG:

- Start number 8 was manually annotated 1 time for cluster AG.

Info for manual annotations of cluster L1:

- Start number 7 was manually annotated 1 time for cluster L1.

Info for manual annotations of cluster L2:

- Start number 7 was manually annotated 30 times for cluster L2.
- Start number 9 was manually annotated 1 time for cluster L2.

Info for manual annotations of cluster L4:

- Start number 7 was manually annotated 4 times for cluster L4.
- Start number 9 was manually annotated 2 times for cluster L4.

Info for manual annotations of cluster U:

- Start number 7 was manually annotated 3 times for cluster U.

Gene Information:

Gene: AgentM_57 Start: 39179, Stop: 39045, Start Num: 7
Candidate Starts for AgentM_57:
(Start: 7 @39179 has 77 MA's), (Start: 9 @39167 has 3 MA's), (13, 39083),

Gene: Appletree2_53 Start: 40440, Stop: 40571, Start Num: 7
Candidate Starts for Appletree2_53:
(3, 40398), (Start: 4 @40416 has 1 MA's), (Start: 7 @40440 has 77 MA's), (Start: 9 @40452 has 3 MA's), (11, 40485), (12, 40533), (13, 40536),

Gene: Aragog_57 Start: 39199, Stop: 39065, Start Num: 7
Candidate Starts for Aragog_57:
(Start: 7 @39199 has 77 MA's), (Start: 9 @39187 has 3 MA's), (13, 39103),

Gene: Archetta_57 Start: 39609, Stop: 39475, Start Num: 7
Candidate Starts for Archetta_57:
(Start: 7 @39609 has 77 MA's), (Start: 9 @39597 has 3 MA's), (13, 39513),

Gene: Archie_56 Start: 42579, Stop: 42710, Start Num: 7
Candidate Starts for Archie_56:
(Start: 7 @42579 has 77 MA's), (Start: 9 @42591 has 3 MA's), (13, 42675),

Gene: Astro_63 Start: 38975, Stop: 38853, Start Num: 7
Candidate Starts for Astro_63:
(Start: 4 @38999 has 1 MA's), (Start: 7 @38975 has 77 MA's), (Start: 9 @38963 has 3 MA's),

Gene: Baoshan_55 Start: 42253, Stop: 42384, Start Num: 7
Candidate Starts for Baoshan_55:
(Start: 7 @42253 has 77 MA's), (Start: 9 @42265 has 3 MA's), (13, 42349),

Gene: Bazzle_56 Start: 42649, Stop: 42780, Start Num: 7
Candidate Starts for Bazzle_56:
(Start: 7 @42649 has 77 MA's), (Start: 9 @42661 has 3 MA's), (13, 42745),

Gene: BigCheese_56 Start: 42319, Stop: 42450, Start Num: 7
Candidate Starts for BigCheese_56:
(Start: 7 @42319 has 77 MA's), (Start: 9 @42331 has 3 MA's), (13, 42415),

Gene: Bluefalcon_55 Start: 39629, Stop: 39492, Start Num: 7
Candidate Starts for Bluefalcon_55:
(Start: 7 @39629 has 77 MA's), (Start: 9 @39617 has 3 MA's), (13, 39533),

Gene: BobsGarage_56 Start: 42319, Stop: 42450, Start Num: 7
Candidate Starts for BobsGarage_56:
(Start: 7 @42319 has 77 MA's), (Start: 9 @42331 has 3 MA's), (13, 42415),

Gene: Bonamassa_55 Start: 39021, Stop: 38887, Start Num: 7
Candidate Starts for Bonamassa_55:
(Start: 7 @39021 has 77 MA's), (Start: 9 @39009 has 3 MA's), (13, 38925),

Gene: BrainDrainer_54 Start: 41187, Stop: 41312, Start Num: 7
Candidate Starts for BrainDrainer_54:
(Start: 7 @41187 has 77 MA's), (Start: 9 @41199 has 3 MA's), (11, 41232), (13, 41283),

Gene: Breezona_56 Start: 42319, Stop: 42450, Start Num: 7
Candidate Starts for Breezona_56:
(Start: 7 @42319 has 77 MA's), (Start: 9 @42331 has 3 MA's), (13, 42415),

Gene: Bromden_55 Start: 41859, Stop: 41984, Start Num: 7
Candidate Starts for Bromden_55:
(Start: 7 @41859 has 77 MA's), (Start: 9 @41871 has 3 MA's), (11, 41904), (13, 41955),

Gene: Caitlin_62 Start: 38691, Stop: 38569, Start Num: 7
Candidate Starts for Caitlin_62:
(Start: 4 @38715 has 1 MA's), (Start: 7 @38691 has 77 MA's), (Start: 9 @38679 has 3 MA's),

Gene: Chaser_52 Start: 40944, Stop: 41069, Start Num: 7
Candidate Starts for Chaser_52:
(1, 40815), (2, 40860), (3, 40902), (Start: 7 @40944 has 77 MA's), (Start: 9 @40956 has 3 MA's), (11, 40989), (13, 41040),

Gene: ChutneyChips_54 Start: 41220, Stop: 41345, Start Num: 7
Candidate Starts for ChutneyChips_54:
(Start: 7 @41220 has 77 MA's), (Start: 9 @41232 has 3 MA's), (11, 41265), (13, 41316),

Gene: Claus_56 Start: 42412, Stop: 42531, Start Num: 9
Candidate Starts for Claus_56:
(Start: 7 @42400 has 77 MA's), (Start: 9 @42412 has 3 MA's), (13, 42496),

Gene: Conspiracy_58 Start: 39421, Stop: 39287, Start Num: 7
Candidate Starts for Conspiracy_58:
(Start: 7 @39421 has 77 MA's), (Start: 9 @39409 has 3 MA's), (13, 39325),

Gene: Crossroads_56 Start: 42397, Stop: 42528, Start Num: 7
Candidate Starts for Crossroads_56:
(Start: 7 @42397 has 77 MA's), (Start: 9 @42409 has 3 MA's), (13, 42493),

Gene: Cuco_57 Start: 39245, Stop: 39111, Start Num: 7
Candidate Starts for Cuco_57:
(Start: 7 @39245 has 77 MA's), (Start: 9 @39233 has 3 MA's), (13, 39149),

Gene: DHan_57 Start: 42300, Stop: 42431, Start Num: 7
Candidate Starts for DHan_57:
(Start: 7 @42300 has 77 MA's), (Start: 9 @42312 has 3 MA's), (13, 42396),

Gene: DanBing_56 Start: 42251, Stop: 42382, Start Num: 7
Candidate Starts for DanBing_56:
(Start: 7 @42251 has 77 MA's), (Start: 9 @42263 has 3 MA's), (13, 42347),

Gene: Danforth_63 Start: 39038, Stop: 38916, Start Num: 7
Candidate Starts for Danforth_63:
(Start: 4 @39062 has 1 MA's), (Start: 7 @39038 has 77 MA's), (Start: 9 @39026 has 3 MA's),

Gene: Demikore_55 Start: 41310, Stop: 41504, Start Num: 7
Candidate Starts for Demikore_55:
(Start: 7 @41310 has 77 MA's), (Start: 9 @41322 has 3 MA's), (10, 41346), (14, 41454), (15, 41466),

Gene: Discoknowium_56 Start: 39088, Stop: 38954, Start Num: 7
Candidate Starts for Discoknowium_56:
(Start: 7 @39088 has 77 MA's), (Start: 9 @39076 has 3 MA's), (13, 38992),

Gene: Dixon_62 Start: 38558, Stop: 38436, Start Num: 7
Candidate Starts for Dixon_62:
(Start: 4 @38582 has 1 MA's), (Start: 7 @38558 has 77 MA's), (Start: 9 @38546 has 3 MA's),

Gene: Douge_54 Start: 40938, Stop: 41063, Start Num: 7
Candidate Starts for Douge_54:
(Start: 7 @40938 has 77 MA's), (Start: 9 @40950 has 3 MA's), (11, 40983), (13, 41034),

Gene: Douzhi_54 Start: 41015, Stop: 41140, Start Num: 7
Candidate Starts for Douzhi_54:
(Start: 7 @41015 has 77 MA's), (Start: 9 @41027 has 3 MA's), (11, 41060), (13, 41111),

Gene: DrSeegs_56 Start: 42319, Stop: 42450, Start Num: 7
Candidate Starts for DrSeegs_56:
(Start: 7 @42319 has 77 MA's), (Start: 9 @42331 has 3 MA's), (13, 42415),

Gene: Dublin_57 Start: 39321, Stop: 39184, Start Num: 7
Candidate Starts for Dublin_57:
(Start: 7 @39321 has 77 MA's), (Start: 9 @39309 has 3 MA's), (13, 39225),

Gene: DyoEdafos_56 Start: 41232, Stop: 41345, Start Num: 9
Candidate Starts for DyoEdafos_56:
(5, 41202), (Start: 7 @41220 has 77 MA's), (Start: 9 @41232 has 3 MA's), (11, 41265), (13, 41316),

Gene: Expelliarmus_60 Start: 38762, Stop: 38640, Start Num: 7
Candidate Starts for Expelliarmus_60:
(Start: 4 @38786 has 1 MA's), (Start: 7 @38762 has 77 MA's), (Start: 9 @38750 has 3 MA's),

Gene: Faith1_56 Start: 42319, Stop: 42450, Start Num: 7
Candidate Starts for Faith1_56:
(Start: 7 @42319 has 77 MA's), (Start: 9 @42331 has 3 MA's), (13, 42415),

Gene: FarmResident_55 Start: 40978, Stop: 41103, Start Num: 7
Candidate Starts for FarmResident_55:
(Start: 7 @40978 has 77 MA's), (Start: 9 @40990 has 3 MA's), (11, 41023), (13, 41074),

Gene: Finemlucis_56 Start: 42640, Stop: 42771, Start Num: 7
Candidate Starts for Finemlucis_56:
(Start: 7 @42640 has 77 MA's), (Start: 9 @42652 has 3 MA's), (13, 42736),

Gene: Florence1_53 Start: 38521, Stop: 38381, Start Num: 9
Candidate Starts for Florence1_53:
(Start: 7 @38533 has 77 MA's), (Start: 9 @38521 has 3 MA's), (13, 38437),

Gene: Florence4_55 Start: 38533, Stop: 38381, Start Num: 7
Candidate Starts for Florence4_55:
(Start: 7 @38533 has 77 MA's), (Start: 9 @38521 has 3 MA's), (13, 38437),

Gene: ForGetIt_58 Start: 39446, Stop: 39312, Start Num: 7

Candidate Starts for ForGetIt_58:

(Start: 7 @39446 has 77 MA's), (Start: 9 @39434 has 3 MA's), (13, 39350),

Gene: Gabriela_53 Start: 40769, Stop: 40900, Start Num: 7

Candidate Starts for Gabriela_53:

(Start: 7 @40769 has 77 MA's), (Start: 9 @40781 has 3 MA's), (13, 40865),

Gene: Gardann_57 Start: 42355, Stop: 42486, Start Num: 7

Candidate Starts for Gardann_57:

(Start: 7 @42355 has 77 MA's), (Start: 9 @42367 has 3 MA's), (13, 42451),

Gene: George_54 Start: 38915, Stop: 38781, Start Num: 7

Candidate Starts for George_54:

(Start: 7 @38915 has 77 MA's), (Start: 9 @38903 has 3 MA's), (13, 38819),

Gene: Ghoulboy_59 Start: 39883, Stop: 39746, Start Num: 7

Candidate Starts for Ghoulboy_59:

(Start: 7 @39883 has 77 MA's), (Start: 9 @39871 has 3 MA's), (13, 39787),

Gene: Groundhog_62 Start: 38953, Stop: 38831, Start Num: 7

Candidate Starts for Groundhog_62:

(Start: 4 @38977 has 1 MA's), (Start: 7 @38953 has 77 MA's), (Start: 9 @38941 has 3 MA's),

Gene: GuuelaD_55 Start: 42434, Stop: 42565, Start Num: 7

Candidate Starts for GuuelaD_55:

(Start: 7 @42434 has 77 MA's), (Start: 9 @42446 has 3 MA's), (13, 42530),

Gene: Hafay_57 Start: 42423, Stop: 42554, Start Num: 7

Candidate Starts for Hafay_57:

(Start: 7 @42423 has 77 MA's), (Start: 9 @42435 has 3 MA's), (13, 42519),

Gene: HuhtaEnerson15_56 Start: 38915, Stop: 38781, Start Num: 7

Candidate Starts for HuhtaEnerson15_56:

(Start: 7 @38915 has 77 MA's), (Start: 9 @38903 has 3 MA's), (13, 38819),

Gene: Itos_55 Start: 41225, Stop: 41356, Start Num: 7

Candidate Starts for Itos_55:

(Start: 7 @41225 has 77 MA's), (Start: 9 @41237 has 3 MA's), (13, 41321),

Gene: Jovo_58 Start: 39702, Stop: 39568, Start Num: 7

Candidate Starts for Jovo_58:

(Start: 7 @39702 has 77 MA's), (Start: 9 @39690 has 3 MA's), (13, 39606),

Gene: Kahlid_56 Start: 42325, Stop: 42456, Start Num: 7

Candidate Starts for Kahlid_56:

(Start: 7 @42325 has 77 MA's), (Start: 9 @42337 has 3 MA's), (13, 42421),

Gene: Kropertea_53 Start: 41134, Stop: 41247, Start Num: 9

Candidate Starts for Kropertea_53:

(5, 41104), (Start: 7 @41122 has 77 MA's), (Start: 9 @41134 has 3 MA's), (11, 41167), (13, 41218),

Gene: Labelle_54 Start: 41309, Stop: 41503, Start Num: 7

Candidate Starts for Labelle_54:

(Start: 7 @41309 has 77 MA's), (Start: 9 @41321 has 3 MA's), (10, 41345), (14, 41453), (15, 41465),

Gene: Lev2_58 Start: 39334, Stop: 39200, Start Num: 7

Candidate Starts for Lev2_58:

(Start: 7 @39334 has 77 MA's), (Start: 9 @39322 has 3 MA's), (13, 39238),

Gene: Lewan_57 Start: 42379, Stop: 42510, Start Num: 7

Candidate Starts for Lewan_57:

(Start: 7 @42379 has 77 MA's), (Start: 9 @42391 has 3 MA's), (13, 42475),

Gene: LilDestine_56 Start: 42352, Stop: 42483, Start Num: 7

Candidate Starts for LilDestine_56:

(Start: 7 @42352 has 77 MA's), (Start: 9 @42364 has 3 MA's), (13, 42448),

Gene: LittleCherry_56 Start: 38935, Stop: 38801, Start Num: 7

Candidate Starts for LittleCherry_56:

(Start: 7 @38935 has 77 MA's), (Start: 9 @38923 has 3 MA's), (13, 38839),

Gene: Loadrie_55 Start: 42407, Stop: 42538, Start Num: 7

Candidate Starts for Loadrie_55:

(Start: 7 @42407 has 77 MA's), (Start: 9 @42419 has 3 MA's), (13, 42503),

Gene: Lynnae_57 Start: 42350, Stop: 42481, Start Num: 7

Candidate Starts for Lynnae_57:

(Start: 7 @42350 has 77 MA's), (Start: 9 @42362 has 3 MA's), (13, 42446),

Gene: Madruga_53 Start: 40962, Stop: 41156, Start Num: 7

Candidate Starts for Madruga_53:

(Start: 7 @40962 has 77 MA's), (Start: 9 @40974 has 3 MA's), (10, 40998), (14, 41106), (15, 41118),

Gene: MalagasyRose_1 Start: 96, Stop: 254, Start Num: 8

Candidate Starts for MalagasyRose_1:

(Start: 8 @96 has 1 MA's), (Start: 9 @108 has 3 MA's),

Gene: MarysWell_57 Start: 39564, Stop: 39427, Start Num: 7

Candidate Starts for MarysWell_57:

(Start: 7 @39564 has 77 MA's), (Start: 9 @39552 has 3 MA's), (13, 39468),

Gene: Micasa_57 Start: 39286, Stop: 39134, Start Num: 7

Candidate Starts for Micasa_57:

(Start: 7 @39286 has 77 MA's), (Start: 9 @39274 has 3 MA's), (13, 39190),

Gene: Milcery_56 Start: 38883, Stop: 38749, Start Num: 7

Candidate Starts for Milcery_56:

(Start: 7 @38883 has 77 MA's), (Start: 9 @38871 has 3 MA's), (13, 38787),

Gene: Miley16_56 Start: 42319, Stop: 42450, Start Num: 7

Candidate Starts for Miley16_56:

(Start: 7 @42319 has 77 MA's), (Start: 9 @42331 has 3 MA's), (13, 42415),

Gene: MkaliMitinis3_57 Start: 42391, Stop: 42522, Start Num: 7

Candidate Starts for MkaliMitinis3_57:

(Start: 7 @42391 has 77 MA's), (Start: 9 @42403 has 3 MA's), (13, 42487),

Gene: NearlyHeadless_63 Start: 38804, Stop: 38682, Start Num: 7
Candidate Starts for NearlyHeadless_63:
(Start: 4 @38828 has 1 MA's), (Start: 7 @38804 has 77 MA's), (Start: 9 @38792 has 3 MA's),

Gene: Netyap_57 Start: 42320, Stop: 42451, Start Num: 7
Candidate Starts for Netyap_57:
(Start: 7 @42320 has 77 MA's), (Start: 9 @42332 has 3 MA's), (13, 42416),

Gene: Nicholasp3_56 Start: 42355, Stop: 42486, Start Num: 7
Candidate Starts for Nicholasp3_56:
(Start: 7 @42355 has 77 MA's), (Start: 9 @42367 has 3 MA's), (13, 42451),

Gene: OverPar_57 Start: 42407, Stop: 42538, Start Num: 7
Candidate Starts for OverPar_57:
(Start: 7 @42407 has 77 MA's), (Start: 9 @42419 has 3 MA's), (13, 42503),

Gene: PYPDinur_52 Start: 41048, Stop: 41173, Start Num: 7
Candidate Starts for PYPDinur_52:
(Start: 7 @41048 has 77 MA's), (Start: 9 @41060 has 3 MA's), (11, 41093), (13, 41144),

Gene: Patience_55 Start: 41857, Stop: 42051, Start Num: 7
Candidate Starts for Patience_55:
(Start: 7 @41857 has 77 MA's), (Start: 9 @41869 has 3 MA's), (10, 41893), (14, 42001), (15, 42013),

Gene: Phillis_60 Start: 38282, Stop: 38160, Start Num: 7
Candidate Starts for Phillis_60:
(Start: 4 @38306 has 1 MA's), (6, 38300), (Start: 7 @38282 has 77 MA's), (Start: 9 @38270 has 3 MA's),

Gene: Phlorence_56 Start: 39079, Stop: 38945, Start Num: 7
Candidate Starts for Phlorence_56:
(Start: 7 @39079 has 77 MA's), (Start: 9 @39067 has 3 MA's), (13, 38983),

Gene: PickleBack_58 Start: 39256, Stop: 39122, Start Num: 7
Candidate Starts for PickleBack_58:
(Start: 7 @39256 has 77 MA's), (Start: 9 @39244 has 3 MA's), (13, 39160),

Gene: Prin Ashe11_55 Start: 38794, Stop: 38660, Start Num: 7
Candidate Starts for Prin Ashe11_55:
(Start: 7 @38794 has 77 MA's), (Start: 9 @38782 has 3 MA's), (13, 38698),

Gene: Quby_53 Start: 40913, Stop: 41026, Start Num: 9
Candidate Starts for Quby_53:
(1, 40772), (2, 40817), (3, 40859), (Start: 7 @40901 has 77 MA's), (Start: 9 @40913 has 3 MA's), (11, 40946), (13, 40997),

Gene: Roary_64 Start: 39023, Stop: 38901, Start Num: 7
Candidate Starts for Roary_64:
(Start: 4 @39047 has 1 MA's), (Start: 7 @39023 has 77 MA's), (Start: 9 @39011 has 3 MA's),

Gene: Rossetti_57 Start: 42901, Stop: 43032, Start Num: 7
Candidate Starts for Rossetti_57:

(Start: 7 @42901 has 77 MA's), (Start: 9 @42913 has 3 MA's), (13, 42997),

Gene: Rumpelstiltskin_55 Start: 41748, Stop: 41879, Start Num: 7

Candidate Starts for Rumpelstiltskin_55:

(Start: 7 @41748 has 77 MA's), (Start: 9 @41760 has 3 MA's), (13, 41844),

Gene: Saintus_58 Start: 35688, Stop: 35566, Start Num: 7

Candidate Starts for Saintus_58:

(Start: 4 @35712 has 1 MA's), (Start: 7 @35688 has 77 MA's), (Start: 9 @35676 has 3 MA's),

Gene: Sarshaun_56 Start: 42415, Stop: 42546, Start Num: 7

Candidate Starts for Sarshaun_56:

(Start: 7 @42415 has 77 MA's), (Start: 9 @42427 has 3 MA's), (13, 42511),

Gene: Sheng711_54 Start: 41025, Stop: 41150, Start Num: 7

Candidate Starts for Sheng711_54:

(Start: 7 @41025 has 77 MA's), (Start: 9 @41037 has 3 MA's), (11, 41070), (13, 41121),

Gene: Smeadley_63 Start: 38908, Stop: 38762, Start Num: 4

Candidate Starts for Smeadley_63:

(Start: 4 @38908 has 1 MA's), (Start: 7 @38884 has 77 MA's), (Start: 9 @38872 has 3 MA's),

Gene: SoJulia_58 Start: 42584, Stop: 42715, Start Num: 7

Candidate Starts for SoJulia_58:

(Start: 7 @42584 has 77 MA's), (Start: 9 @42596 has 3 MA's), (13, 42680),

Gene: Soap141_56 Start: 42415, Stop: 42546, Start Num: 7

Candidate Starts for Soap141_56:

(Start: 7 @42415 has 77 MA's), (Start: 9 @42427 has 3 MA's), (13, 42511),

Gene: Stephig9_62 Start: 38845, Stop: 38723, Start Num: 7

Candidate Starts for Stephig9_62:

(Start: 4 @38869 has 1 MA's), (Start: 7 @38845 has 77 MA's), (Start: 9 @38833 has 3 MA's),

Gene: SuperSonics_55 Start: 41033, Stop: 41227, Start Num: 7

Candidate Starts for SuperSonics_55:

(Start: 7 @41033 has 77 MA's), (Start: 9 @41045 has 3 MA's), (10, 41069), (14, 41177), (15, 41189),

Gene: Swirley_58 Start: 39274, Stop: 39122, Start Num: 7

Candidate Starts for Swirley_58:

(Start: 7 @39274 has 77 MA's), (Start: 9 @39262 has 3 MA's), (13, 39178),

Gene: SydNat_59 Start: 39892, Stop: 39755, Start Num: 7

Candidate Starts for SydNat_59:

(Start: 7 @39892 has 77 MA's), (Start: 9 @39880 has 3 MA's), (13, 39796),

Gene: Tarynearal_54 Start: 38719, Stop: 38567, Start Num: 7

Candidate Starts for Tarynearal_54:

(Start: 7 @38719 has 77 MA's), (Start: 9 @38707 has 3 MA's), (13, 38623),

Gene: Theia_56 Start: 39545, Stop: 39408, Start Num: 7

Candidate Starts for Theia_56:

(Start: 7 @39545 has 77 MA's), (Start: 9 @39533 has 3 MA's), (13, 39449),

Gene: Tiger_57 Start: 39000, Stop: 38866, Start Num: 7
Candidate Starts for Tiger_57:
(Start: 7 @39000 has 77 MA's), (Start: 9 @38988 has 3 MA's), (13, 38904),

Gene: Tourach_55 Start: 42404, Stop: 42535, Start Num: 7
Candidate Starts for Tourach_55:
(Start: 7 @42404 has 77 MA's), (Start: 9 @42416 has 3 MA's), (13, 42500),

Gene: Twigg_56 Start: 38922, Stop: 38770, Start Num: 7
Candidate Starts for Twigg_56:
(Start: 7 @38922 has 77 MA's), (Start: 9 @38910 has 3 MA's), (13, 38826),

Gene: Vetrix_56 Start: 42359, Stop: 42490, Start Num: 7
Candidate Starts for Vetrix_56:
(Start: 7 @42359 has 77 MA's), (Start: 9 @42371 has 3 MA's), (13, 42455),

Gene: Wigglewigggle_56 Start: 42379, Stop: 42510, Start Num: 7
Candidate Starts for Wigglewigggle_56:
(Start: 7 @42379 has 77 MA's), (Start: 9 @42391 has 3 MA's), (13, 42475),

Gene: Wilder_57 Start: 42325, Stop: 42456, Start Num: 7
Candidate Starts for Wilder_57:
(Start: 7 @42325 has 77 MA's), (Start: 9 @42337 has 3 MA's), (13, 42421),

Gene: Winky_56 Start: 42319, Stop: 42450, Start Num: 7
Candidate Starts for Winky_56:
(Start: 7 @42319 has 77 MA's), (Start: 9 @42331 has 3 MA's), (13, 42415),

Gene: Zakai_57 Start: 42645, Stop: 42776, Start Num: 7
Candidate Starts for Zakai_57:
(Start: 7 @42645 has 77 MA's), (Start: 9 @42657 has 3 MA's), (13, 42741),

Gene: ZhongYanYuan_54 Start: 42214, Stop: 42345, Start Num: 7
Candidate Starts for ZhongYanYuan_54:
(Start: 7 @42214 has 77 MA's), (Start: 9 @42226 has 3 MA's), (13, 42310),

Gene: Zolita_58 Start: 39896, Stop: 39759, Start Num: 7
Candidate Starts for Zolita_58:
(Start: 7 @39896 has 77 MA's), (Start: 9 @39884 has 3 MA's), (13, 39800),