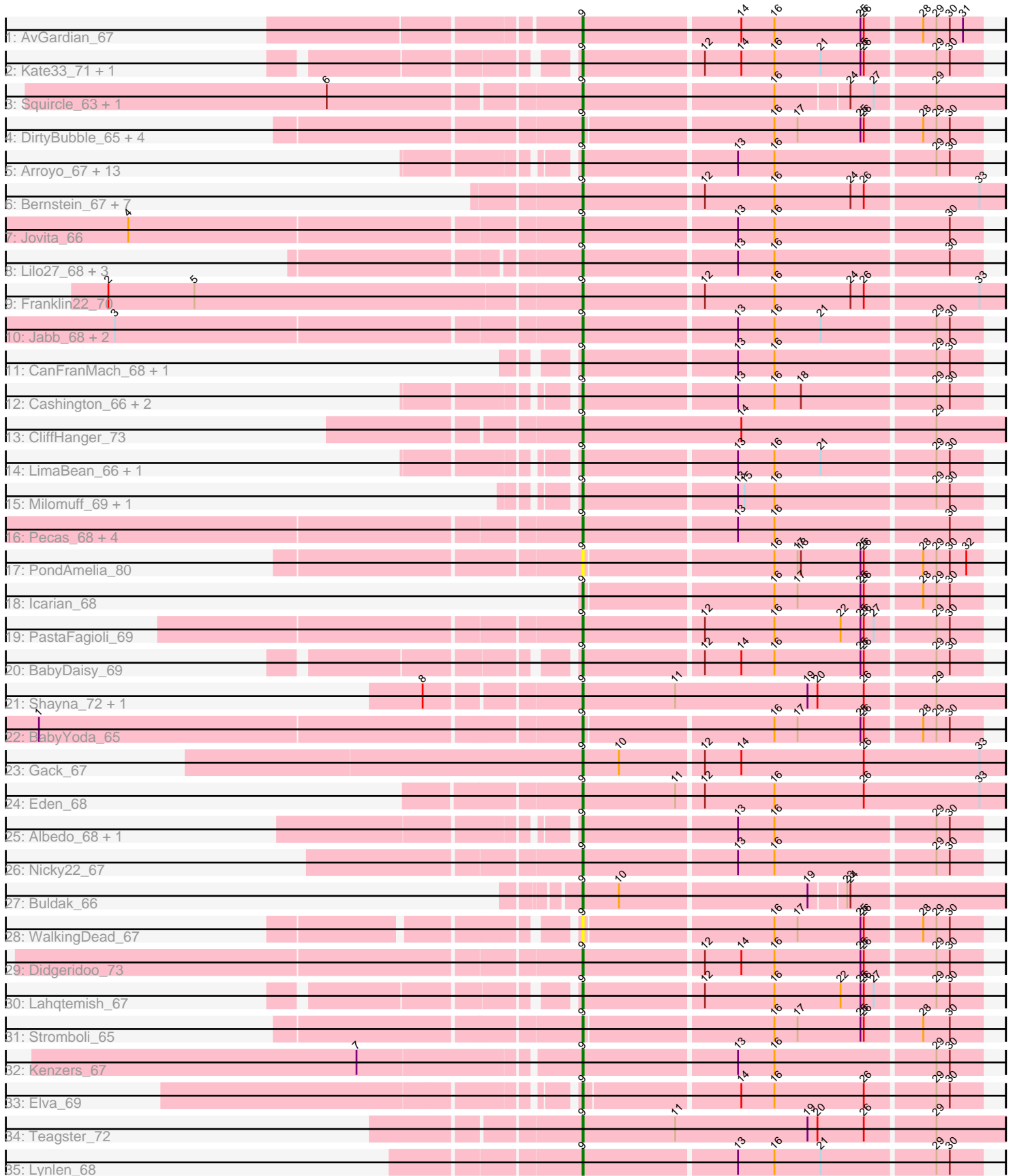


Pham 308427



Note: Tracks are now grouped by subcluster and scaled. Switching in subcluster is indicated by changes in track color. Track scale is now set by default to display the region 30 bp upstream of start 1 to 30 bp downstream of the last possible start. If this default region is judged to be packed too tightly with annotated starts, the track will be further scaled to only show that region of the ORF with annotated starts. This action will be indicated by adding "Zoomed" to the title. For starts, yellow indicates the location of called starts comprised solely of Glimmer/GeneMark auto-annotations, green indicates the location of called starts with at least 1 manual gene annotation.

Pham 308427 Report

This analysis was run 06/27/26 on database version 652.

Pham number 308427 has 77 members, 7 are drafts.

Phages represented in each track:

- Track 1 : AvGardian_67
- Track 2 : Kate33_71, IndyLu_69
- Track 3 : Squirrel_63, Olliecat_63
- Track 4 : DirtyBubble_65, Stoor_65, Loviatar_66, SanaSana_67, Akino08_65
- Track 5 : Arroyo_67, DickRichards_65, Doobus_65, BubbaBear_66, Johnathan_66, Burritobowl_68, BelmontSKP_66, AnnaLie_66, Softsoap_68, SansAfet_68, QMacho_68, Abigail_66, Albright_66, Bengal_69
- Track 6 : Bernstein_67, Clayda5_69, Rollins_67, Armstrong_67, Coltrane_67, Skylord_67, Vitas_67, Brahms_67
- Track 7 : Jovita_66
- Track 8 : Lilo27_68, TukTuk_68, Finalfrontier_67, Slay_68
- Track 9 : Franklin22_70
- Track 10 : Jabb_68, CupcakePrincess_68, MsUbiquitous_68
- Track 11 : CanFranMach_68, Avocadoman_67
- Track 12 : Cashington_66, Phisb_68, PhigPhack_69
- Track 13 : CliffHanger_73
- Track 14 : LimaBean_66, CroZenni_67
- Track 15 : Milomuff_69, Solea_70
- Track 16 : Pecas_68, Swervy_68, Eula_67, SarBear_68, AylexOG_69
- Track 17 : PondAmelia_80
- Track 18 : Icarian_68
- Track 19 : PastaFagioli_69
- Track 20 : BabyDaisy_69
- Track 21 : Shayna_72, SunnyD_72
- Track 22 : BabyYoda_65
- Track 23 : Gack_67
- Track 24 : Eden_68
- Track 25 : Albedo_68, SirBeanington_67
- Track 26 : Nicky22_67
- Track 27 : Buldak_66
- Track 28 : WalkingDead_67
- Track 29 : Didgeridoo_73
- Track 30 : Lahqtemish_67
- Track 31 : Stromboli_65
- Track 32 : Kenzers_67
- Track 33 : Elva_69
- Track 34 : Teagster_72

- Track 35 : Lynlen_68

Summary of Final Annotations (See graph section above for start numbers):

The start number called the most often in the published annotations is 9, it was called in 70 of the 70 non-draft genes in the pham.

Genes that call this "Most Annotated" start:

- Abigail_66, Akino08_65, Albedo_68, Albright_66, AnnaLie_66, Armstrong_67, Arroyo_67, AvGardian_67, Avocadoman_67, AylexOG_69, BabyDaisy_69, BabyYoda_65, BelmontSKP_66, Bengal_69, Bernstein_67, Brahms_67, BubbaBear_66, Buldak_66, Burritobowl_68, CanFranMach_68, Cashington_66, Clayda5_69, CliffHanger_73, Coltrane_67, CroZenni_67, CupcakePrincess_68, DickRichards_65, Didgeridoo_73, DirtyBubble_65, Doobus_65, Eden_68, Elva_69, Eula_67, Finalfrontier_67, Franklin22_70, Gack_67, Icarian_68, IndyLu_69, Jabb_68, Johnathan_66, Jovita_66, Kate33_71, Kenzers_67, Lahqtemish_67, Lilo27_68, LimaBean_66, Loviatar_66, Lynlen_68, Milomuff_69, MsUbiquitous_68, Nicky22_67, Olliecat_63, PastaFagioli_69, Pecas_68, PhigPhack_69, Phisb_68, PondAmelia_80, QMacho_68, Rollins_67, SanaSana_67, SansAfet_68, SarBear_68, Shayna_72, SirBeanington_67, Skylord_67, Slay_68, Softsoap_68, Solea_70, Squircle_63, Stoor_65, Stromboli_65, SunnyD_72, Swervy_68, Teagster_72, TukTuk_68, Vitas_67, WalkingDead_67,

Genes that have the "Most Annotated" start but do not call it:

-

Genes that do not have the "Most Annotated" start:

-

Summary by start number:

Start 9:

- Found in 77 of 77 (100.0%) of genes in pham
- Manual Annotations of this start: 70 of 70
- Called 100.0% of time when present
- Phage (with cluster) where this start called: Abigail_66 (EB), Akino08_65 (EB), Albedo_68 (EB), Albright_66 (EB), AnnaLie_66 (EB), Armstrong_67 (EB), Arroyo_67 (EB), AvGardian_67 (EB), Avocadoman_67 (EB), AylexOG_69 (EB), BabyDaisy_69 (EB), BabyYoda_65 (EB), BelmontSKP_66 (EB), Bengal_69 (EB), Bernstein_67 (EB), Brahms_67 (EB), BubbaBear_66 (EB), Buldak_66 (EB), Burritobowl_68 (EB), CanFranMach_68 (EB), Cashington_66 (EB), Clayda5_69 (EB), CliffHanger_73 (EB), Coltrane_67 (EB), CroZenni_67 (EB), CupcakePrincess_68 (EB), DickRichards_65 (EB), Didgeridoo_73 (EB), DirtyBubble_65 (EB), Doobus_65 (EB), Eden_68 (EB), Elva_69 (EB), Eula_67 (EB), Finalfrontier_67 (EB), Franklin22_70 (EB), Gack_67 (EB), Icarian_68 (EB), IndyLu_69 (EB), Jabb_68 (EB), Johnathan_66 (EB), Jovita_66 (EB), Kate33_71 (EB), Kenzers_67 (EB), Lahqtemish_67 (EB), Lilo27_68 (EB), LimaBean_66 (EB), Loviatar_66 (EB), Lynlen_68 (EB), Milomuff_69 (EB), MsUbiquitous_68 (EB), Nicky22_67 (EB), Olliecat_63 (EB), PastaFagioli_69 (EB), Pecas_68 (EB), PhigPhack_69 (EB), Phisb_68 (EB), PondAmelia_80 (EB), QMacho_68 (EB), Rollins_67 (EB), SanaSana_67 (EB), SansAfet_68 (EB),

SarBear_68 (EB), Shayna_72 (EB), SirBeanington_67 (EB), Skylord_67 (EB), Slay_68 (EB), Softsoap_68 (EB), Solea_70 (EB), Squirrel_63 (EB), Stoor_65 (EB), Stromboli_65 (EB), SunnyD_72 (EB), Swervy_68 (EB), Teagster_72 (EB), TukTuk_68 (EB), Vitas_67 (EB), WalkingDead_67 (EB),

Summary by clusters:

There is one cluster represented in this pham: EB

Info for manual annotations of cluster EB:

•Start number 9 was manually annotated 70 times for cluster EB.

Gene Information:

Gene: Abigail_66 Start: 39740, Stop: 40090, Start Num: 9

Candidate Starts for Abigail_66:

(Start: 9 @39740 has 70 MA's), (13, 39875), (16, 39908), (29, 40049), (30, 40061),

Gene: Akino08_65 Start: 41520, Stop: 41867, Start Num: 9

Candidate Starts for Akino08_65:

(Start: 9 @41520 has 70 MA's), (16, 41685), (17, 41706), (25, 41763), (26, 41766), (28, 41814), (29, 41826), (30, 41838),

Gene: Albedo_68 Start: 40661, Stop: 41011, Start Num: 9

Candidate Starts for Albedo_68:

(Start: 9 @40661 has 70 MA's), (13, 40796), (16, 40829), (29, 40970), (30, 40982),

Gene: Albright_66 Start: 39722, Stop: 40072, Start Num: 9

Candidate Starts for Albright_66:

(Start: 9 @39722 has 70 MA's), (13, 39857), (16, 39890), (29, 40031), (30, 40043),

Gene: AnnaLie_66 Start: 40401, Stop: 40751, Start Num: 9

Candidate Starts for AnnaLie_66:

(Start: 9 @40401 has 70 MA's), (13, 40536), (16, 40569), (29, 40710), (30, 40722),

Gene: Armstrong_67 Start: 38820, Stop: 39191, Start Num: 9

Candidate Starts for Armstrong_67:

(Start: 9 @38820 has 70 MA's), (12, 38925), (16, 38988), (24, 39057), (26, 39069), (33, 39168),

Gene: Arroyo_67 Start: 40865, Stop: 41215, Start Num: 9

Candidate Starts for Arroyo_67:

(Start: 9 @40865 has 70 MA's), (13, 41000), (16, 41033), (29, 41174), (30, 41186),

Gene: AvGardian_67 Start: 40487, Stop: 40837, Start Num: 9

Candidate Starts for AvGardian_67:

(Start: 9 @40487 has 70 MA's), (14, 40625), (16, 40655), (25, 40733), (26, 40736), (28, 40784), (29, 40796), (30, 40808), (31, 40820),

Gene: Avocadoman_67 Start: 40039, Stop: 40389, Start Num: 9

Candidate Starts for Avocadoman_67:

(Start: 9 @40039 has 70 MA's), (13, 40174), (16, 40207), (29, 40348), (30, 40360),

Gene: AylexOG_69 Start: 40804, Stop: 41154, Start Num: 9
Candidate Starts for AylexOG_69:
(Start: 9 @40804 has 70 MA's), (13, 40939), (16, 40972), (30, 41125),

Gene: BabyDaisy_69 Start: 41209, Stop: 41559, Start Num: 9
Candidate Starts for BabyDaisy_69:
(Start: 9 @41209 has 70 MA's), (12, 41314), (14, 41347), (16, 41377), (25, 41455), (26, 41458), (29, 41518), (30, 41530),

Gene: BabyYoda_65 Start: 40429, Stop: 40776, Start Num: 9
Candidate Starts for BabyYoda_65:
(1, 39952), (Start: 9 @40429 has 70 MA's), (16, 40594), (17, 40615), (25, 40672), (26, 40675), (28, 40723), (29, 40735), (30, 40747),

Gene: BelmontSKP_66 Start: 40401, Stop: 40751, Start Num: 9
Candidate Starts for BelmontSKP_66:
(Start: 9 @40401 has 70 MA's), (13, 40536), (16, 40569), (29, 40710), (30, 40722),

Gene: Bengal_69 Start: 40632, Stop: 40982, Start Num: 9
Candidate Starts for Bengal_69:
(Start: 9 @40632 has 70 MA's), (13, 40767), (16, 40800), (29, 40941), (30, 40953),

Gene: Bernstein_67 Start: 38818, Stop: 39189, Start Num: 9
Candidate Starts for Bernstein_67:
(Start: 9 @38818 has 70 MA's), (12, 38923), (16, 38986), (24, 39055), (26, 39067), (33, 39166),

Gene: Brahms_67 Start: 38720, Stop: 39091, Start Num: 9
Candidate Starts for Brahms_67:
(Start: 9 @38720 has 70 MA's), (12, 38825), (16, 38888), (24, 38957), (26, 38969), (33, 39068),

Gene: BubbaBear_66 Start: 40653, Stop: 41003, Start Num: 9
Candidate Starts for BubbaBear_66:
(Start: 9 @40653 has 70 MA's), (13, 40788), (16, 40821), (29, 40962), (30, 40974),

Gene: Buldak_66 Start: 38230, Stop: 38595, Start Num: 9
Candidate Starts for Buldak_66:
(Start: 9 @38230 has 70 MA's), (10, 38263), (19, 38428), (23, 38458), (24, 38461),

Gene: Burritobowl_68 Start: 40223, Stop: 40573, Start Num: 9
Candidate Starts for Burritobowl_68:
(Start: 9 @40223 has 70 MA's), (13, 40358), (16, 40391), (29, 40532), (30, 40544),

Gene: CanFranMach_68 Start: 40433, Stop: 40783, Start Num: 9
Candidate Starts for CanFranMach_68:
(Start: 9 @40433 has 70 MA's), (13, 40568), (16, 40601), (29, 40742), (30, 40754),

Gene: Cashington_66 Start: 39964, Stop: 40314, Start Num: 9
Candidate Starts for Cashington_66:
(Start: 9 @39964 has 70 MA's), (13, 40099), (16, 40132), (18, 40156), (29, 40273), (30, 40285),

Gene: Clayda5_69 Start: 38786, Stop: 39157, Start Num: 9
Candidate Starts for Clayda5_69:

(Start: 9 @38786 has 70 MA's), (12, 38891), (16, 38954), (24, 39023), (26, 39035), (33, 39134),

Gene: CliffHanger_73 Start: 39507, Stop: 39884, Start Num: 9

Candidate Starts for CliffHanger_73:

(Start: 9 @39507 has 70 MA's), (14, 39651), (29, 39822),

Gene: Coltrane_67 Start: 38720, Stop: 39091, Start Num: 9

Candidate Starts for Coltrane_67:

(Start: 9 @38720 has 70 MA's), (12, 38825), (16, 38888), (24, 38957), (26, 38969), (33, 39068),

Gene: CroZenni_67 Start: 40208, Stop: 40558, Start Num: 9

Candidate Starts for CroZenni_67:

(Start: 9 @40208 has 70 MA's), (13, 40343), (16, 40376), (21, 40418), (29, 40517), (30, 40529),

Gene: CupcakePrincess_68 Start: 40528, Stop: 40878, Start Num: 9

Candidate Starts for CupcakePrincess_68:

(3, 40120), (Start: 9 @40528 has 70 MA's), (13, 40663), (16, 40696), (21, 40738), (29, 40837), (30, 40849),

Gene: DickRichards_65 Start: 40179, Stop: 40529, Start Num: 9

Candidate Starts for DickRichards_65:

(Start: 9 @40179 has 70 MA's), (13, 40314), (16, 40347), (29, 40488), (30, 40500),

Gene: Didgeridoo_73 Start: 41636, Stop: 41986, Start Num: 9

Candidate Starts for Didgeridoo_73:

(Start: 9 @41636 has 70 MA's), (12, 41741), (14, 41774), (16, 41804), (25, 41882), (26, 41885), (29, 41945), (30, 41957),

Gene: DirtyBubble_65 Start: 40468, Stop: 40815, Start Num: 9

Candidate Starts for DirtyBubble_65:

(Start: 9 @40468 has 70 MA's), (16, 40633), (17, 40654), (25, 40711), (26, 40714), (28, 40762), (29, 40774), (30, 40786),

Gene: Doobus_65 Start: 40034, Stop: 40384, Start Num: 9

Candidate Starts for Doobus_65:

(Start: 9 @40034 has 70 MA's), (13, 40169), (16, 40202), (29, 40343), (30, 40355),

Gene: Eden_68 Start: 39619, Stop: 39996, Start Num: 9

Candidate Starts for Eden_68:

(Start: 9 @39619 has 70 MA's), (11, 39703), (12, 39724), (16, 39787), (26, 39868), (33, 39973),

Gene: Elva_69 Start: 40991, Stop: 41338, Start Num: 9

Candidate Starts for Elva_69:

(Start: 9 @40991 has 70 MA's), (14, 41126), (16, 41156), (26, 41237), (29, 41297), (30, 41309),

Gene: Eula_67 Start: 40261, Stop: 40611, Start Num: 9

Candidate Starts for Eula_67:

(Start: 9 @40261 has 70 MA's), (13, 40396), (16, 40429), (30, 40582),

Gene: Finalfrontier_67 Start: 40928, Stop: 41278, Start Num: 9

Candidate Starts for Finalfrontier_67:

(Start: 9 @40928 has 70 MA's), (13, 41063), (16, 41096), (30, 41249),

Gene: Franklin22_70 Start: 39362, Stop: 39733, Start Num: 9

Candidate Starts for Franklin22_70:

(2, 38942), (5, 39020), (Start: 9 @39362 has 70 MA's), (12, 39467), (16, 39530), (24, 39599), (26, 39611), (33, 39710),

Gene: Gack_67 Start: 39302, Stop: 39679, Start Num: 9

Candidate Starts for Gack_67:

(Start: 9 @39302 has 70 MA's), (10, 39335), (12, 39407), (14, 39440), (26, 39551), (33, 39656),

Gene: Icarian_68 Start: 41170, Stop: 41517, Start Num: 9

Candidate Starts for Icarian_68:

(Start: 9 @41170 has 70 MA's), (16, 41335), (17, 41356), (25, 41413), (26, 41416), (28, 41464), (29, 41476), (30, 41488),

Gene: IndyLu_69 Start: 40940, Stop: 41290, Start Num: 9

Candidate Starts for IndyLu_69:

(Start: 9 @40940 has 70 MA's), (12, 41045), (14, 41078), (16, 41108), (21, 41150), (25, 41186), (26, 41189), (29, 41249), (30, 41261),

Gene: Jabb_68 Start: 40528, Stop: 40878, Start Num: 9

Candidate Starts for Jabb_68:

(3, 40120), (Start: 9 @40528 has 70 MA's), (13, 40663), (16, 40696), (21, 40738), (29, 40837), (30, 40849),

Gene: Johnathan_66 Start: 39723, Stop: 40073, Start Num: 9

Candidate Starts for Johnathan_66:

(Start: 9 @39723 has 70 MA's), (13, 39858), (16, 39891), (29, 40032), (30, 40044),

Gene: Jovita_66 Start: 40029, Stop: 40379, Start Num: 9

Candidate Starts for Jovita_66:

(4, 39633), (Start: 9 @40029 has 70 MA's), (13, 40164), (16, 40197), (30, 40350),

Gene: Kate33_71 Start: 40670, Stop: 41020, Start Num: 9

Candidate Starts for Kate33_71:

(Start: 9 @40670 has 70 MA's), (12, 40775), (14, 40808), (16, 40838), (21, 40880), (25, 40916), (26, 40919), (29, 40979), (30, 40991),

Gene: Kenzers_67 Start: 40109, Stop: 40459, Start Num: 9

Candidate Starts for Kenzers_67:

(7, 39932), (Start: 9 @40109 has 70 MA's), (13, 40244), (16, 40277), (29, 40418), (30, 40430),

Gene: Lahqtemish_67 Start: 41142, Stop: 41492, Start Num: 9

Candidate Starts for Lahqtemish_67:

(Start: 9 @41142 has 70 MA's), (12, 41247), (16, 41310), (22, 41370), (25, 41388), (26, 41391), (27, 41400), (29, 41451), (30, 41463),

Gene: Lilo27_68 Start: 40445, Stop: 40795, Start Num: 9

Candidate Starts for Lilo27_68:

(Start: 9 @40445 has 70 MA's), (13, 40580), (16, 40613), (30, 40766),

Gene: LimaBean_66 Start: 39617, Stop: 39967, Start Num: 9

Candidate Starts for LimaBean_66:

(Start: 9 @39617 has 70 MA's), (13, 39752), (16, 39785), (21, 39827), (29, 39926), (30, 39938),

Gene: Loviatar_66 Start: 41536, Stop: 41883, Start Num: 9
Candidate Starts for Loviatar_66:
(Start: 9 @41536 has 70 MA's), (16, 41701), (17, 41722), (25, 41779), (26, 41782), (28, 41830), (29, 41842), (30, 41854),

Gene: Lynlen_68 Start: 40262, Stop: 40612, Start Num: 9
Candidate Starts for Lynlen_68:
(Start: 9 @40262 has 70 MA's), (13, 40397), (16, 40430), (21, 40472), (29, 40571), (30, 40583),

Gene: Milomuff_69 Start: 40659, Stop: 41009, Start Num: 9
Candidate Starts for Milomuff_69:
(Start: 9 @40659 has 70 MA's), (13, 40794), (15, 40800), (16, 40827), (29, 40968), (30, 40980),

Gene: MsUbiquitous_68 Start: 40528, Stop: 40878, Start Num: 9
Candidate Starts for MsUbiquitous_68:
(3, 40120), (Start: 9 @40528 has 70 MA's), (13, 40663), (16, 40696), (21, 40738), (29, 40837), (30, 40849),

Gene: Nicky22_67 Start: 40704, Stop: 41054, Start Num: 9
Candidate Starts for Nicky22_67:
(Start: 9 @40704 has 70 MA's), (13, 40839), (16, 40872), (29, 41013), (30, 41025),

Gene: Olliecat_63 Start: 37835, Stop: 38200, Start Num: 9
Candidate Starts for Olliecat_63:
(6, 37619), (Start: 9 @37835 has 70 MA's), (16, 38003), (24, 38066), (27, 38087), (29, 38138),

Gene: PastaFagioli_69 Start: 41210, Stop: 41560, Start Num: 9
Candidate Starts for PastaFagioli_69:
(Start: 9 @41210 has 70 MA's), (12, 41315), (16, 41378), (22, 41438), (25, 41456), (26, 41459), (27, 41468), (29, 41519), (30, 41531),

Gene: Pecas_68 Start: 40562, Stop: 40912, Start Num: 9
Candidate Starts for Pecas_68:
(Start: 9 @40562 has 70 MA's), (13, 40697), (16, 40730), (30, 40883),

Gene: PhigPhack_69 Start: 40319, Stop: 40669, Start Num: 9
Candidate Starts for PhigPhack_69:
(Start: 9 @40319 has 70 MA's), (13, 40454), (16, 40487), (18, 40511), (29, 40628), (30, 40640),

Gene: Phisb_68 Start: 40292, Stop: 40642, Start Num: 9
Candidate Starts for Phisb_68:
(Start: 9 @40292 has 70 MA's), (13, 40427), (16, 40460), (18, 40484), (29, 40601), (30, 40613),

Gene: PondAmelia_80 Start: 40495, Stop: 40842, Start Num: 9
Candidate Starts for PondAmelia_80:
(Start: 9 @40495 has 70 MA's), (16, 40660), (17, 40681), (18, 40684), (25, 40738), (26, 40741), (28, 40789), (29, 40801), (30, 40813), (32, 40828),

Gene: QMacho_68 Start: 40423, Stop: 40773, Start Num: 9
Candidate Starts for QMacho_68:
(Start: 9 @40423 has 70 MA's), (13, 40558), (16, 40591), (29, 40732), (30, 40744),

Gene: Rollins_67 Start: 38818, Stop: 39189, Start Num: 9
Candidate Starts for Rollins_67:
(Start: 9 @38818 has 70 MA's), (12, 38923), (16, 38986), (24, 39055), (26, 39067), (33, 39166),

Gene: SanaSana_67 Start: 40879, Stop: 41226, Start Num: 9
Candidate Starts for SanaSana_67:
(Start: 9 @40879 has 70 MA's), (16, 41044), (17, 41065), (25, 41122), (26, 41125), (28, 41173), (29, 41185), (30, 41197),

Gene: SansAfet_68 Start: 40268, Stop: 40618, Start Num: 9
Candidate Starts for SansAfet_68:
(Start: 9 @40268 has 70 MA's), (13, 40403), (16, 40436), (29, 40577), (30, 40589),

Gene: SarBear_68 Start: 40354, Stop: 40704, Start Num: 9
Candidate Starts for SarBear_68:
(Start: 9 @40354 has 70 MA's), (13, 40489), (16, 40522), (30, 40675),

Gene: Shayna_72 Start: 40114, Stop: 40491, Start Num: 9
Candidate Starts for Shayna_72:
(8, 39985), (Start: 9 @40114 has 70 MA's), (11, 40198), (19, 40318), (20, 40327), (26, 40369), (29, 40429),

Gene: SirBeanington_67 Start: 40528, Stop: 40878, Start Num: 9
Candidate Starts for SirBeanington_67:
(Start: 9 @40528 has 70 MA's), (13, 40663), (16, 40696), (29, 40837), (30, 40849),

Gene: Skylord_67 Start: 38735, Stop: 39106, Start Num: 9
Candidate Starts for Skylord_67:
(Start: 9 @38735 has 70 MA's), (12, 38840), (16, 38903), (24, 38972), (26, 38984), (33, 39083),

Gene: Slay_68 Start: 40803, Stop: 41153, Start Num: 9
Candidate Starts for Slay_68:
(Start: 9 @40803 has 70 MA's), (13, 40938), (16, 40971), (30, 41124),

Gene: Softsoap_68 Start: 40491, Stop: 40841, Start Num: 9
Candidate Starts for Softsoap_68:
(Start: 9 @40491 has 70 MA's), (13, 40626), (16, 40659), (29, 40800), (30, 40812),

Gene: Solea_70 Start: 40658, Stop: 41008, Start Num: 9
Candidate Starts for Solea_70:
(Start: 9 @40658 has 70 MA's), (13, 40793), (15, 40799), (16, 40826), (29, 40967), (30, 40979),

Gene: Squiracle_63 Start: 37834, Stop: 38199, Start Num: 9
Candidate Starts for Squiracle_63:
(6, 37618), (Start: 9 @37834 has 70 MA's), (16, 38002), (24, 38065), (27, 38086), (29, 38137),

Gene: Stoor_65 Start: 40666, Stop: 41013, Start Num: 9
Candidate Starts for Stoor_65:
(Start: 9 @40666 has 70 MA's), (16, 40831), (17, 40852), (25, 40909), (26, 40912), (28, 40960), (29, 40972), (30, 40984),

Gene: Stromboli_65 Start: 40467, Stop: 40814, Start Num: 9
Candidate Starts for Stromboli_65:

(Start: 9 @40467 has 70 MA's), (16, 40632), (17, 40653), (25, 40710), (26, 40713), (28, 40761), (30, 40785),

Gene: SunnyD_72 Start: 40114, Stop: 40491, Start Num: 9

Candidate Starts for SunnyD_72:

(8, 39985), (Start: 9 @40114 has 70 MA's), (11, 40198), (19, 40318), (20, 40327), (26, 40369), (29, 40429),

Gene: Swervy_68 Start: 40391, Stop: 40741, Start Num: 9

Candidate Starts for Swervy_68:

(Start: 9 @40391 has 70 MA's), (13, 40526), (16, 40559), (30, 40712),

Gene: Teagster_72 Start: 40532, Stop: 40909, Start Num: 9

Candidate Starts for Teagster_72:

(Start: 9 @40532 has 70 MA's), (11, 40616), (19, 40736), (20, 40745), (26, 40787), (29, 40847),

Gene: TukTuk_68 Start: 40582, Stop: 40932, Start Num: 9

Candidate Starts for TukTuk_68:

(Start: 9 @40582 has 70 MA's), (13, 40717), (16, 40750), (30, 40903),

Gene: Vitas_67 Start: 38791, Stop: 39162, Start Num: 9

Candidate Starts for Vitas_67:

(Start: 9 @38791 has 70 MA's), (12, 38896), (16, 38959), (24, 39028), (26, 39040), (33, 39139),

Gene: WalkingDead_67 Start: 41328, Stop: 41675, Start Num: 9

Candidate Starts for WalkingDead_67:

(Start: 9 @41328 has 70 MA's), (16, 41493), (17, 41514), (25, 41571), (26, 41574), (28, 41622), (29, 41634), (30, 41646),