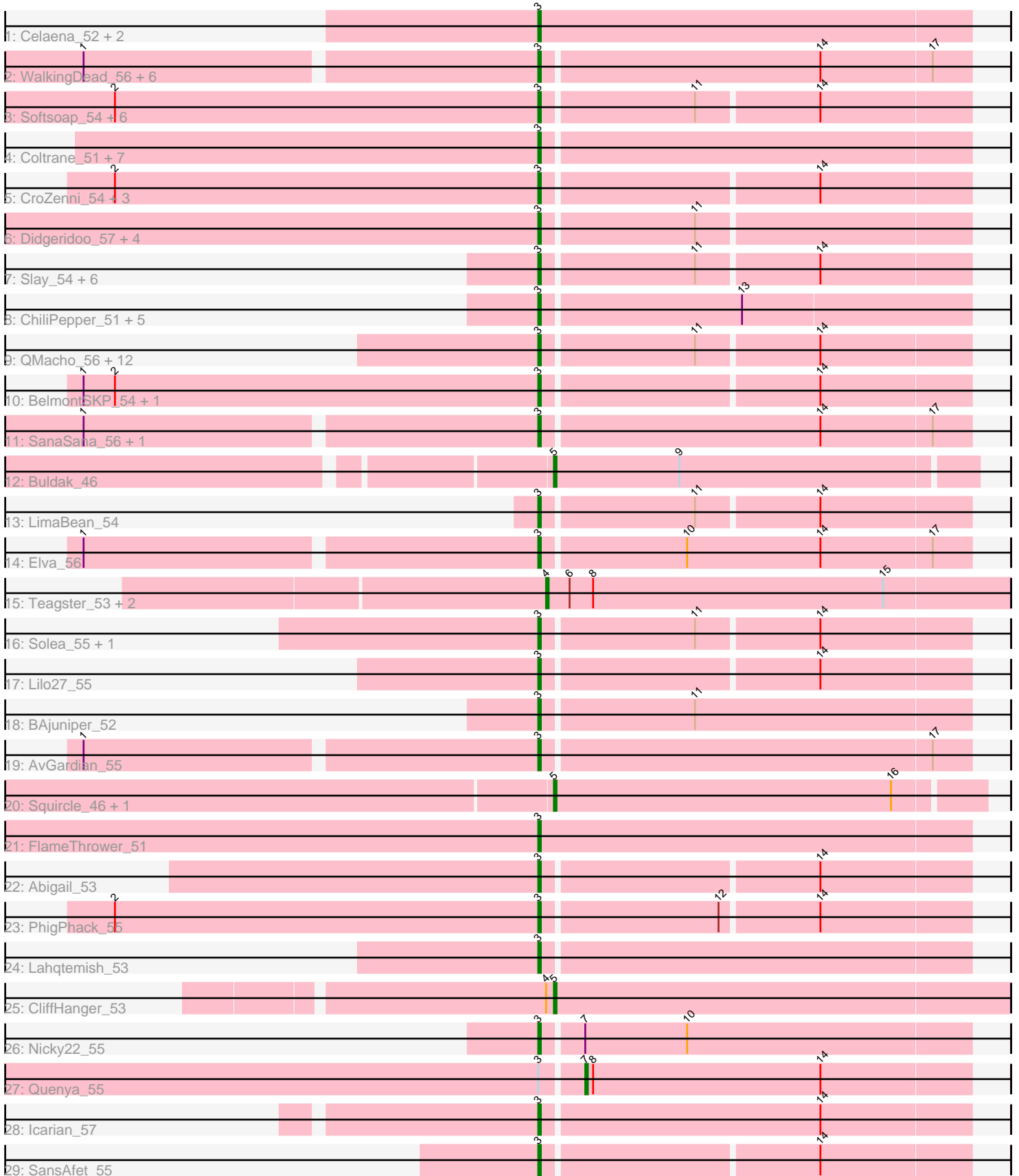


Pham 308442



Note: Tracks are now grouped by subcluster and scaled. Switching in subcluster is indicated by changes in track color. Track scale is now set by default to display the region 30 bp upstream of start 1 to 30 bp downstream of the last possible start. If this default region is judged to be packed too tightly with annotated starts, the track will be further scaled to only show that region of the ORF with annotated starts. This action will be indicated by adding "Zoomed" to the title. For starts, yellow indicates the location of called starts comprised solely of Glimmer/GeneMark auto-annotations, green indicates the location of called starts with at least 1 manual gene annotation.

Pham 308442 Report

This analysis was run 06/27/26 on database version 652.

Pham number 308442 has 86 members, 8 are drafts.

Phages represented in each track:

- Track 1 : Celaena_52, Bachaco_52, Katzastrophic_53
- Track 2 : WalkingDead_56, BabyYoda_54, Loviatar_55, Akino08_55, DirtyBubble_53, Stromboli_54, Stoor_54
- Track 3 : Softsoap_54, Avocadoman_52, Albright_51, Burritobowl_54, BubbaBear_53, DickRichards_52, Doobus_52
- Track 4 : Coltrane_51, Vitas_51, Brahms_51, Bernstein_51, Skylord_51, Armstrong_51, Clayda5_53, Rollins_51
- Track 5 : CroZenni_54, CanFranMach_55, Bengal_55, Arroyo_54
- Track 6 : Didgeridoo_57, IndyLu_54, PastaFagioli_54, Kate33_56, BabyDaisy_54
- Track 7 : Slay_54, Johnathan_53, Kenzers_54, Lynlen_55, Albedo_55, Cashington_52, SirBeanington_54
- Track 8 : ChiliPepper_51, Dismas_52, Rona_51, Kamdara_51, Sharkboy_52, Kieran_51
- Track 9 : QMacho_56, TukTuk_55, Jabb_54, Finalfrontier_55, Pecas_55, Eula_54, SarBear_54, Swervy_55, Jovita_53, MsUbiquitous_54, Phisb_54, AylexOG_56, CupcakePrincess_54
- Track 10 : BelmontSKP_54, AnnaLie_54
- Track 11 : SanaSana_56, PondAmelia_66
- Track 12 : Buldak_46
- Track 13 : LimaBean_54
- Track 14 : Elva_56
- Track 15 : Teagster_53, Shayna_53, SunnyD_53
- Track 16 : Solea_55, Milomuff_54
- Track 17 : Lilo27_55
- Track 18 : BAjuniper_52
- Track 19 : AvGardian_55
- Track 20 : Squiracle_46, Olliecat_46
- Track 21 : FlameThrower_51
- Track 22 : Abigail_53
- Track 23 : PhigPhack_55
- Track 24 : Lahqtemish_53
- Track 25 : CliffHanger_53
- Track 26 : Nicky22_55
- Track 27 : Quenya_55
- Track 28 : Icarian_57
- Track 29 : SansAfet_55

Summary of Final Annotations (See graph section above for start numbers):

The start number called the most often in the published annotations is 3, it was called in 70 of the 78 non-draft genes in the pham.

Genes that call this "Most Annotated" start:

- Abigail_53, Akino08_55, Albedo_55, Albright_51, AnnaLie_54, Armstrong_51, Arroyo_54, AvGardian_55, Avocadoman_52, AylexOG_56, BAjuniper_52, BabyDaisy_54, BabyYoda_54, Bachaco_52, BelmontSKP_54, Bengal_55, Bernstein_51, Brahms_51, BubbaBear_53, Burritobowl_54, CanFranMach_55, Cashington_52, Celaena_52, ChiliPepper_51, Clayda5_53, Coltrane_51, CroZenni_54, CupcakePrincess_54, DickRichards_52, Didgeridoo_57, DirtyBubble_53, Dismas_52, Doobus_52, Elva_56, Eula_54, Finalfrontier_55, FlameThrower_51, Icarian_57, IndyLu_54, Jabb_54, Johnathan_53, Jovita_53, Kamdara_51, Kate33_56, Katzastrophic_53, Kenzers_54, Kieran_51, Lahqtemish_53, Lilo27_55, LimaBean_54, Loviatar_55, Lynlen_55, Milomuff_54, MsUbiquitous_54, Nicky22_55, PastaFagioli_54, Pecas_55, PhigPhack_55, Phisb_54, PondAmelia_66, QMacho_56, Rollins_51, Rona_51, SanaSana_56, SansAfet_55, SarBear_54, Sharkboy_52, SirBeanington_54, Skylord_51, Slay_54, Softsoap_54, Solea_55, Stoor_54, Stromboli_54, Swervy_55, TukTuk_55, Vitas_51, WalkingDead_56,

Genes that have the "Most Annotated" start but do not call it:

- Quenya_55,

Genes that do not have the "Most Annotated" start:

- Buldak_46, CliffHanger_53, Olliecat_46, Shayna_53, Squiracle_46, SunnyD_53, Teagster_53,

Summary by start number:

Start 3:

- Found in 79 of 86 (91.9%) of genes in pham
- Manual Annotations of this start: 70 of 78
- Called 98.7% of time when present
- Phage (with cluster) where this start called: Abigail_53 (EB), Akino08_55 (EB), Albedo_55 (EB), Albright_51 (EB), AnnaLie_54 (EB), Armstrong_51 (EB), Arroyo_54 (EB), AvGardian_55 (EB), Avocadoman_52 (EB), AylexOG_56 (EB), BAjuniper_52 (EB), BabyDaisy_54 (EB), BabyYoda_54 (EB), Bachaco_52 (EB), BelmontSKP_54 (EB), Bengal_55 (EB), Bernstein_51 (EB), Brahms_51 (EB), BubbaBear_53 (EB), Burritobowl_54 (EB), CanFranMach_55 (EB), Cashington_52 (EB), Celaena_52 (EB), ChiliPepper_51 (EB), Clayda5_53 (EB), Coltrane_51 (EB), CroZenni_54 (EB), CupcakePrincess_54 (EB), DickRichards_52 (EB), Didgeridoo_57 (EB), DirtyBubble_53 (EB), Dismas_52 (EB), Doobus_52 (EB), Elva_56 (EB), Eula_54 (EB), Finalfrontier_55 (EB), FlameThrower_51 (EB), Icarian_57 (EB), IndyLu_54 (EB), Jabb_54 (EB), Johnathan_53 (EB), Jovita_53 (EB), Kamdara_51 (EB), Kate33_56 (EB), Katzastrophic_53 (EB), Kenzers_54 (EB), Kieran_51 (EB), Lahqtemish_53 (EB), Lilo27_55 (EB), LimaBean_54 (EB), Loviatar_55 (EB), Lynlen_55 (EB), Milomuff_54 (EB), MsUbiquitous_54 (EB), Nicky22_55 (EB), PastaFagioli_54 (EB), Pecas_55 (EB), PhigPhack_55 (EB), Phisb_54 (EB), PondAmelia_66 (EB), QMacho_56 (EB),

Rollins_51 (EB), Rona_51 (EB), SanaSana_56 (EB), SansAfet_55 (EB), SarBear_54 (EB), Sharkboy_52 (EB), SirBeanington_54 (EB), Skylord_51 (EB), Slay_54 (EB), Softsoap_54 (EB), Solea_55 (EB), Stoor_54 (EB), Stromboli_54 (EB), Swervy_55 (EB), TukTuk_55 (EB), Vitas_51 (EB), WalkingDead_56 (EB),

Start 4:

- Found in 4 of 86 (4.7%) of genes in pham
- Manual Annotations of this start: 3 of 78
- Called 75.0% of time when present
- Phage (with cluster) where this start called: Shayna_53 (EB), SunnyD_53 (EB), Teagster_53 (EB),

Start 5:

- Found in 4 of 86 (4.7%) of genes in pham
- Manual Annotations of this start: 4 of 78
- Called 100.0% of time when present
- Phage (with cluster) where this start called: Buldak_46 (EB), CliffHanger_53 (EB), Olliecat_46 (EB), Squirrel_46 (EB),

Start 7:

- Found in 2 of 86 (2.3%) of genes in pham
- Manual Annotations of this start: 1 of 78
- Called 50.0% of time when present
- Phage (with cluster) where this start called: Quenya_55 (EB),

Summary by clusters:

There is one cluster represented in this pham: EB

Info for manual annotations of cluster EB:

- Start number 3 was manually annotated 70 times for cluster EB.
- Start number 4 was manually annotated 3 times for cluster EB.
- Start number 5 was manually annotated 4 times for cluster EB.
- Start number 7 was manually annotated 1 time for cluster EB.

Gene Information:

Gene: Abigail_53 Start: 35128, Stop: 35286, Start Num: 3

Candidate Starts for Abigail_53:

(Start: 3 @35128 has 70 MA's), (14, 35230),

Gene: Akino08_55 Start: 37557, Stop: 37718, Start Num: 3

Candidate Starts for Akino08_55:

(1, 37389), (Start: 3 @37557 has 70 MA's), (14, 37662), (17, 37704),

Gene: Albedo_55 Start: 35853, Stop: 36011, Start Num: 3

Candidate Starts for Albedo_55:

(Start: 3 @35853 has 70 MA's), (11, 35910), (14, 35955),

Gene: Albright_51 Start: 34559, Stop: 34717, Start Num: 3

Candidate Starts for Albright_51:

(2, 34397), (Start: 3 @34559 has 70 MA's), (11, 34616), (14, 34661),

Gene: AnnaLie_54 Start: 35788, Stop: 35946, Start Num: 3

Candidate Starts for AnnaLie_54:

(1, 35614), (2, 35626), (Start: 3 @35788 has 70 MA's), (14, 35890),

Gene: Armstrong_51 Start: 33629, Stop: 33790, Start Num: 3

Candidate Starts for Armstrong_51:

(Start: 3 @33629 has 70 MA's),

Gene: Arroyo_54 Start: 35896, Stop: 36054, Start Num: 3

Candidate Starts for Arroyo_54:

(2, 35734), (Start: 3 @35896 has 70 MA's), (14, 35998),

Gene: AvGardian_55 Start: 36075, Stop: 36236, Start Num: 3

Candidate Starts for AvGardian_55:

(1, 35907), (Start: 3 @36075 has 70 MA's), (17, 36222),

Gene: Avocadoman_52 Start: 34760, Stop: 34918, Start Num: 3

Candidate Starts for Avocadoman_52:

(2, 34598), (Start: 3 @34760 has 70 MA's), (11, 34817), (14, 34862),

Gene: AylexOG_56 Start: 35794, Stop: 35952, Start Num: 3

Candidate Starts for AylexOG_56:

(Start: 3 @35794 has 70 MA's), (11, 35851), (14, 35896),

Gene: BAjuniper_52 Start: 36408, Stop: 36569, Start Num: 3

Candidate Starts for BAjuniper_52:

(Start: 3 @36408 has 70 MA's), (11, 36465),

Gene: BabyDaisy_54 Start: 35917, Stop: 36075, Start Num: 3

Candidate Starts for BabyDaisy_54:

(Start: 3 @35917 has 70 MA's), (11, 35974),

Gene: BabyYoda_54 Start: 36496, Stop: 36657, Start Num: 3

Candidate Starts for BabyYoda_54:

(1, 36328), (Start: 3 @36496 has 70 MA's), (14, 36601), (17, 36643),

Gene: Bachaco_52 Start: 37225, Stop: 37389, Start Num: 3

Candidate Starts for Bachaco_52:

(Start: 3 @37225 has 70 MA's),

Gene: BelmontSKP_54 Start: 35788, Stop: 35946, Start Num: 3

Candidate Starts for BelmontSKP_54:

(1, 35614), (2, 35626), (Start: 3 @35788 has 70 MA's), (14, 35890),

Gene: Bengal_55 Start: 35554, Stop: 35712, Start Num: 3

Candidate Starts for Bengal_55:

(2, 35392), (Start: 3 @35554 has 70 MA's), (14, 35656),

Gene: Bernstein_51 Start: 33627, Stop: 33788, Start Num: 3

Candidate Starts for Bernstein_51:

(Start: 3 @33627 has 70 MA's),

Gene: Brahms_51 Start: 33547, Stop: 33708, Start Num: 3

Candidate Starts for Brahms_51:

(Start: 3 @33547 has 70 MA's),

Gene: BubbaBear_53 Start: 35537, Stop: 35695, Start Num: 3

Candidate Starts for BubbaBear_53:

(2, 35375), (Start: 3 @35537 has 70 MA's), (11, 35594), (14, 35639),

Gene: Buldak_46 Start: 32389, Stop: 32547, Start Num: 5

Candidate Starts for Buldak_46:

(Start: 5 @32389 has 4 MA's), (9, 32437),

Gene: Burritobowl_54 Start: 35467, Stop: 35625, Start Num: 3

Candidate Starts for Burritobowl_54:

(2, 35305), (Start: 3 @35467 has 70 MA's), (11, 35524), (14, 35569),

Gene: CanFranMach_55 Start: 35716, Stop: 35874, Start Num: 3

Candidate Starts for CanFranMach_55:

(2, 35554), (Start: 3 @35716 has 70 MA's), (14, 35818),

Gene: Cashington_52 Start: 34880, Stop: 35038, Start Num: 3

Candidate Starts for Cashington_52:

(Start: 3 @34880 has 70 MA's), (11, 34937), (14, 34982),

Gene: Celaena_52 Start: 36987, Stop: 37151, Start Num: 3

Candidate Starts for Celaena_52:

(Start: 3 @36987 has 70 MA's),

Gene: ChiliPepper_51 Start: 36277, Stop: 36438, Start Num: 3

Candidate Starts for ChiliPepper_51:

(Start: 3 @36277 has 70 MA's), (13, 36352),

Gene: Clayda5_53 Start: 33612, Stop: 33773, Start Num: 3

Candidate Starts for Clayda5_53:

(Start: 3 @33612 has 70 MA's),

Gene: CliffHanger_53 Start: 33634, Stop: 33807, Start Num: 5

Candidate Starts for CliffHanger_53:

(Start: 4 @33631 has 3 MA's), (Start: 5 @33634 has 4 MA's),

Gene: Coltrane_51 Start: 33547, Stop: 33708, Start Num: 3

Candidate Starts for Coltrane_51:

(Start: 3 @33547 has 70 MA's),

Gene: CroZenni_54 Start: 35404, Stop: 35562, Start Num: 3

Candidate Starts for CroZenni_54:

(2, 35242), (Start: 3 @35404 has 70 MA's), (14, 35506),

Gene: CupcakePrincess_54 Start: 35265, Stop: 35423, Start Num: 3

Candidate Starts for CupcakePrincess_54:

(Start: 3 @35265 has 70 MA's), (11, 35322), (14, 35367),

Gene: DickRichards_52 Start: 35579, Stop: 35737, Start Num: 3
Candidate Starts for DickRichards_52:
(2, 35417), (Start: 3 @35579 has 70 MA's), (11, 35636), (14, 35681),

Gene: Didgeridoo_57 Start: 36261, Stop: 36419, Start Num: 3
Candidate Starts for Didgeridoo_57:
(Start: 3 @36261 has 70 MA's), (11, 36318),

Gene: DirtyBubble_53 Start: 36164, Stop: 36325, Start Num: 3
Candidate Starts for DirtyBubble_53:
(1, 35996), (Start: 3 @36164 has 70 MA's), (14, 36269), (17, 36311),

Gene: Dismas_52 Start: 36198, Stop: 36359, Start Num: 3
Candidate Starts for Dismas_52:
(Start: 3 @36198 has 70 MA's), (13, 36273),

Gene: Doobus_52 Start: 35068, Stop: 35226, Start Num: 3
Candidate Starts for Doobus_52:
(2, 34906), (Start: 3 @35068 has 70 MA's), (11, 35125), (14, 35170),

Gene: Elva_56 Start: 36561, Stop: 36722, Start Num: 3
Candidate Starts for Elva_56:
(1, 36393), (Start: 3 @36561 has 70 MA's), (10, 36615), (14, 36666), (17, 36708),

Gene: Eula_54 Start: 35251, Stop: 35409, Start Num: 3
Candidate Starts for Eula_54:
(Start: 3 @35251 has 70 MA's), (11, 35308), (14, 35353),

Gene: Finalfrontier_55 Start: 36361, Stop: 36519, Start Num: 3
Candidate Starts for Finalfrontier_55:
(Start: 3 @36361 has 70 MA's), (11, 36418), (14, 36463),

Gene: FlameThrower_51 Start: 36024, Stop: 36188, Start Num: 3
Candidate Starts for FlameThrower_51:
(Start: 3 @36024 has 70 MA's),

Gene: Icarian_57 Start: 37160, Stop: 37321, Start Num: 3
Candidate Starts for Icarian_57:
(Start: 3 @37160 has 70 MA's), (14, 37265),

Gene: IndyLu_54 Start: 35837, Stop: 35995, Start Num: 3
Candidate Starts for IndyLu_54:
(Start: 3 @35837 has 70 MA's), (11, 35894),

Gene: Jabb_54 Start: 35265, Stop: 35423, Start Num: 3
Candidate Starts for Jabb_54:
(Start: 3 @35265 has 70 MA's), (11, 35322), (14, 35367),

Gene: Johnathan_53 Start: 34906, Stop: 35064, Start Num: 3
Candidate Starts for Johnathan_53:
(Start: 3 @34906 has 70 MA's), (11, 34963), (14, 35008),

Gene: Jovita_53 Start: 35125, Stop: 35283, Start Num: 3

Candidate Starts for Jovita_53:
(Start: 3 @35125 has 70 MA's), (11, 35182), (14, 35227),

Gene: Kamdara_51 Start: 36236, Stop: 36397, Start Num: 3
Candidate Starts for Kamdara_51:
(Start: 3 @36236 has 70 MA's), (13, 36311),

Gene: Kate33_56 Start: 35554, Stop: 35712, Start Num: 3
Candidate Starts for Kate33_56:
(Start: 3 @35554 has 70 MA's), (11, 35611),

Gene: Katzastrophic_53 Start: 36534, Stop: 36698, Start Num: 3
Candidate Starts for Katzastrophic_53:
(Start: 3 @36534 has 70 MA's),

Gene: Kenzers_54 Start: 35385, Stop: 35543, Start Num: 3
Candidate Starts for Kenzers_54:
(Start: 3 @35385 has 70 MA's), (11, 35442), (14, 35487),

Gene: Kieran_51 Start: 36239, Stop: 36400, Start Num: 3
Candidate Starts for Kieran_51:
(Start: 3 @36239 has 70 MA's), (13, 36314),

Gene: Lahqtemish_53 Start: 35828, Stop: 35989, Start Num: 3
Candidate Starts for Lahqtemish_53:
(Start: 3 @35828 has 70 MA's),

Gene: Lilo27_55 Start: 35410, Stop: 35568, Start Num: 3
Candidate Starts for Lilo27_55:
(Start: 3 @35410 has 70 MA's), (14, 35512),

Gene: LimaBean_54 Start: 35006, Stop: 35164, Start Num: 3
Candidate Starts for LimaBean_54:
(Start: 3 @35006 has 70 MA's), (11, 35063), (14, 35108),

Gene: Loviatar_55 Start: 37572, Stop: 37733, Start Num: 3
Candidate Starts for Loviatar_55:
(1, 37404), (Start: 3 @37572 has 70 MA's), (14, 37677), (17, 37719),

Gene: Lynlen_55 Start: 35565, Stop: 35723, Start Num: 3
Candidate Starts for Lynlen_55:
(Start: 3 @35565 has 70 MA's), (11, 35622), (14, 35667),

Gene: Milomuff_54 Start: 35408, Stop: 35566, Start Num: 3
Candidate Starts for Milomuff_54:
(Start: 3 @35408 has 70 MA's), (11, 35465), (14, 35510),

Gene: MsUbiquitous_54 Start: 35265, Stop: 35423, Start Num: 3
Candidate Starts for MsUbiquitous_54:
(Start: 3 @35265 has 70 MA's), (11, 35322), (14, 35367),

Gene: Nicky22_55 Start: 36014, Stop: 36175, Start Num: 3
Candidate Starts for Nicky22_55:

(Start: 3 @36014 has 70 MA's), (Start: 7 @36029 has 1 MA's), (10, 36068),

Gene: Olliecat_46 Start: 32464, Stop: 32625, Start Num: 5

Candidate Starts for Olliecat_46:

(Start: 5 @32464 has 4 MA's), (16, 32593),

Gene: PastaFagioli_54 Start: 35972, Stop: 36130, Start Num: 3

Candidate Starts for PastaFagioli_54:

(Start: 3 @35972 has 70 MA's), (11, 36029),

Gene: Pecas_55 Start: 35643, Stop: 35801, Start Num: 3

Candidate Starts for Pecas_55:

(Start: 3 @35643 has 70 MA's), (11, 35700), (14, 35745),

Gene: PhigPhack_55 Start: 35415, Stop: 35573, Start Num: 3

Candidate Starts for PhigPhack_55:

(2, 35253), (Start: 3 @35415 has 70 MA's), (12, 35481), (14, 35517),

Gene: Phisb_54 Start: 35489, Stop: 35647, Start Num: 3

Candidate Starts for Phisb_54:

(Start: 3 @35489 has 70 MA's), (11, 35546), (14, 35591),

Gene: PondAmelia_66 Start: 36366, Stop: 36527, Start Num: 3

Candidate Starts for PondAmelia_66:

(1, 36198), (Start: 3 @36366 has 70 MA's), (14, 36471), (17, 36513),

Gene: QMacho_56 Start: 35905, Stop: 36063, Start Num: 3

Candidate Starts for QMacho_56:

(Start: 3 @35905 has 70 MA's), (11, 35962), (14, 36007),

Gene: Quenya_55 Start: 36683, Stop: 36829, Start Num: 7

Candidate Starts for Quenya_55:

(Start: 3 @36668 has 70 MA's), (Start: 7 @36683 has 1 MA's), (8, 36686), (14, 36773),

Gene: Rollins_51 Start: 33627, Stop: 33788, Start Num: 3

Candidate Starts for Rollins_51:

(Start: 3 @33627 has 70 MA's),

Gene: Rona_51 Start: 36189, Stop: 36350, Start Num: 3

Candidate Starts for Rona_51:

(Start: 3 @36189 has 70 MA's), (13, 36264),

Gene: SanaSana_56 Start: 36876, Stop: 37037, Start Num: 3

Candidate Starts for SanaSana_56:

(1, 36708), (Start: 3 @36876 has 70 MA's), (14, 36981), (17, 37023),

Gene: SansAfet_55 Start: 35314, Stop: 35472, Start Num: 3

Candidate Starts for SansAfet_55:

(Start: 3 @35314 has 70 MA's), (14, 35416),

Gene: SarBear_54 Start: 35209, Stop: 35367, Start Num: 3

Candidate Starts for SarBear_54:

(Start: 3 @35209 has 70 MA's), (11, 35266), (14, 35311),

Gene: Sharkboy_52 Start: 36288, Stop: 36449, Start Num: 3
Candidate Starts for Sharkboy_52:
(Start: 3 @36288 has 70 MA's), (13, 36363),

Gene: Shayna_53 Start: 34066, Stop: 34242, Start Num: 4
Candidate Starts for Shayna_53:
(Start: 4 @34066 has 3 MA's), (6, 34075), (8, 34084), (15, 34195),

Gene: SirBeanington_54 Start: 35726, Stop: 35884, Start Num: 3
Candidate Starts for SirBeanington_54:
(Start: 3 @35726 has 70 MA's), (11, 35783), (14, 35828),

Gene: Skylord_51 Start: 33586, Stop: 33747, Start Num: 3
Candidate Starts for Skylord_51:
(Start: 3 @33586 has 70 MA's),

Gene: Slay_54 Start: 35801, Stop: 35959, Start Num: 3
Candidate Starts for Slay_54:
(Start: 3 @35801 has 70 MA's), (11, 35858), (14, 35903),

Gene: Softsoap_54 Start: 35402, Stop: 35560, Start Num: 3
Candidate Starts for Softsoap_54:
(2, 35240), (Start: 3 @35402 has 70 MA's), (11, 35459), (14, 35504),

Gene: Solea_55 Start: 35407, Stop: 35565, Start Num: 3
Candidate Starts for Solea_55:
(Start: 3 @35407 has 70 MA's), (11, 35464), (14, 35509),

Gene: Squircle_46 Start: 32463, Stop: 32624, Start Num: 5
Candidate Starts for Squircle_46:
(Start: 5 @32463 has 4 MA's), (16, 32592),

Gene: Stoor_54 Start: 36663, Stop: 36824, Start Num: 3
Candidate Starts for Stoor_54:
(1, 36495), (Start: 3 @36663 has 70 MA's), (14, 36768), (17, 36810),

Gene: Stromboli_54 Start: 36534, Stop: 36695, Start Num: 3
Candidate Starts for Stromboli_54:
(1, 36366), (Start: 3 @36534 has 70 MA's), (14, 36639), (17, 36681),

Gene: SunnyD_53 Start: 34073, Stop: 34249, Start Num: 4
Candidate Starts for SunnyD_53:
(Start: 4 @34073 has 3 MA's), (6, 34082), (8, 34091), (15, 34202),

Gene: Swervy_55 Start: 35481, Stop: 35639, Start Num: 3
Candidate Starts for Swervy_55:
(Start: 3 @35481 has 70 MA's), (11, 35538), (14, 35583),

Gene: Teagster_53 Start: 34702, Stop: 34878, Start Num: 4
Candidate Starts for Teagster_53:
(Start: 4 @34702 has 3 MA's), (6, 34711), (8, 34720), (15, 34831),

Gene: TukTuk_55 Start: 35546, Stop: 35704, Start Num: 3
Candidate Starts for TukTuk_55:
(Start: 3 @35546 has 70 MA's), (11, 35603), (14, 35648),

Gene: Vitas_51 Start: 33618, Stop: 33779, Start Num: 3
Candidate Starts for Vitas_51:
(Start: 3 @33618 has 70 MA's),

Gene: WalkingDead_56 Start: 37283, Stop: 37444, Start Num: 3
Candidate Starts for WalkingDead_56:
(1, 37115), (Start: 3 @37283 has 70 MA's), (14, 37388), (17, 37430),