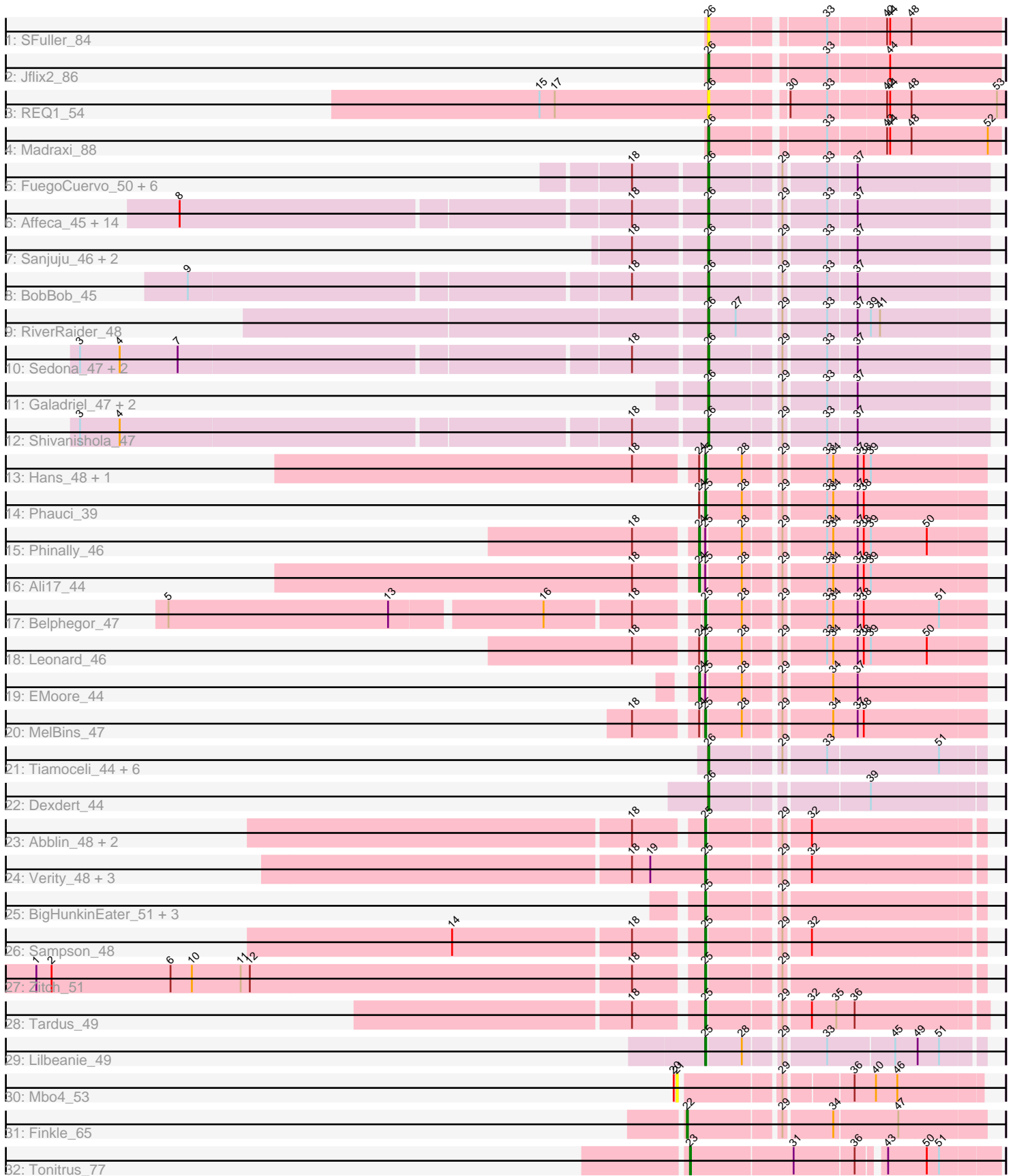


Pham 308532



Note: Tracks are now grouped by subcluster and scaled. Switching in subcluster is indicated by changes in track color. Track scale is now set by default to display the region 30 bp upstream of start 1 to 30 bp downstream of the last possible start. If this default region is judged to be packed too tightly with annotated starts, the track will be further scaled to only show that region of the ORF with annotated starts. This action will be indicated by adding "Zoomed" to the title. For starts, yellow indicates the location of called starts comprised solely of Glimmer/GeneMark auto-annotations, green indicates the location of called starts with at least 1 manual gene annotation.

Pham 308532 Report

This analysis was run 06/27/26 on database version 652.

Pham number 308532 has 73 members, 7 are drafts.

Phages represented in each track:

- Track 1 : SFuller_84
- Track 2 : Jflix2_86
- Track 3 : REQ1_54
- Track 4 : Madraxi_88
- Track 5 : FuegoCuervo_50, Jabberwocky_46, Vivi2_50, Barsten_48, McKinley_49, Kewpiedoll_47, Brawn1_44
- Track 6 : Affeca_45, Charming_48, Lennon_47, Geodirt_46, Ailee_44, ChadMasterC_48, Angelicage_45, Tangent_48, Sitar_47, Kamashten_45, Fosterous_45, Keitabear_47, Thing3_45, Stultus_46, Love_51
- Track 7 : Sanjuju_46, MoontowerMania_47, Fitzgerald_46
- Track 8 : BobBob_45
- Track 9 : RiverRaider_48
- Track 10 : Sedona_47, Nordenberg_42, Brandonk123_49
- Track 11 : Galadriel_47, McCrothy_47, Paries_50
- Track 12 : Shivanishola_47
- Track 13 : Hans_48, Inspectinfecti_47
- Track 14 : Phauci_39
- Track 15 : Phinally_46
- Track 16 : Ali17_44
- Track 17 : Belphegor_47
- Track 18 : Leonard_46
- Track 19 : EMoore_44
- Track 20 : MelBins_47
- Track 21 : Tiamoceli_44, Kwekel_43, Twonlo_41, Chickadee_43, GTE6_43, RoadKill_41, EdmundFerry_42
- Track 22 : Dxdert_44
- Track 23 : Abblin_48, Natkenzie_48, Scioto_49
- Track 24 : Verity_48, Delrey21_48, Zipp_49, DoctorFroggo_48
- Track 25 : BigHunkinEater_51, APunk_49, ViaConlectus_48, Pumpkiney_49
- Track 26 : Sampson_48
- Track 27 : Zitch_51
- Track 28 : Tardus_49
- Track 29 : Lilbeanie_49
- Track 30 : Mbo4_53
- Track 31 : Finkle_65
- Track 32 : Tonitrus_77

Summary of Final Annotations (See graph section above for start numbers):

The start number called the most often in the published annotations is 26, it was called in 41 of the 66 non-draft genes in the pham.

Genes that call this "Most Annotated" start:

- Affeca_45, Ailee_44, Angelicage_45, Barsten_48, BobBob_45, Brandonk123_49, Brawn1_44, ChadMasterC_48, Charming_48, Chickadee_43, Dexdert_44, EdmundFerry_42, Fitzgerald_46, Fosterous_45, FuegoCuervo_50, GTE6_43, Galadriel_47, Geodirt_46, Jabberwocky_46, Jflix2_86, Kamashten_45, Keitabear_47, Kewpiedoll_47, Kwekel_43, Lennon_47, Love_51, Madraxi_88, McCrothy_47, McKinley_49, MoontowerMania_47, Nordenberg_42, Paries_50, REQ1_54, RiverRaider_48, RoadKill_41, SFuller_84, Sanjuju_46, Sedona_47, Shivanishola_47, Sitar_47, Stultus_46, Tangent_48, Thing3_45, Tiamoceli_44, Twonlo_41, Vivi2_50,

Genes that have the "Most Annotated" start but do not call it:

-

Genes that do not have the "Most Annotated" start:

- APunk_49, Abblin_48, Ali17_44, Belphegor_47, BigHunkinEater_51, Delrey21_48, DoctorFroggo_48, EMoore_44, Finkle_65, Hans_48, Inspectinfecti_47, Leonard_46, Lilbeanie_49, Mbo4_53, MelBins_47, Natkenzie_48, Phauci_39, Phinally_46, Pumpkiney_49, Sampson_48, Scioto_49, Tardus_49, Tonitrus_77, Verity_48, ViaConlectus_48, Zipp_49, Zitch_51,

Summary by start number:

Start 21:

- Found in 1 of 73 (1.4%) of genes in pham
- No Manual Annotations of this start.
- Called 100.0% of time when present
- Phage (with cluster) where this start called: Mbo4_53 (singleton),

Start 22:

- Found in 1 of 73 (1.4%) of genes in pham
- Manual Annotations of this start: 1 of 66
- Called 100.0% of time when present
- Phage (with cluster) where this start called: Finkle_65 (singleton),

Start 23:

- Found in 1 of 73 (1.4%) of genes in pham
- Manual Annotations of this start: 1 of 66
- Called 100.0% of time when present
- Phage (with cluster) where this start called: Tonitrus_77 (singleton),

Start 24:

- Found in 8 of 73 (11.0%) of genes in pham
- Manual Annotations of this start: 3 of 66
- Called 37.5% of time when present

- Phage (with cluster) where this start called: Ali17_44 (DE2), EMoore_44 (DE2), Phinally_46 (DE2),

Start 25:

- Found in 24 of 73 (32.9%) of genes in pham
- Manual Annotations of this start: 20 of 66
- Called 87.5% of time when present
- Phage (with cluster) where this start called: APunk_49 (DE4), Abblin_48 (DE4), Belphegor_47 (DE2), BigHunkinEater_51 (DE4), Delrey21_48 (DE4), DoctorFroggo_48 (DE4), Hans_48 (DE2), Inspectinfecti_47 (DE2), Leonard_46 (DE2), Lilbeanie_49 (DE5), MelBins_47 (DE2), Natkenzie_48 (DE4), Phauci_39 (DE2), Pumpkiney_49 (DE4), Sampson_48 (DE4), Scioto_49 (DE4), Tardus_49 (DE4), Verity_48 (DE4), ViaConlectus_48 (DE4), Zipp_49 (DE4), Zitch_51 (DE4),

Start 26:

- Found in 46 of 73 (63.0%) of genes in pham
- Manual Annotations of this start: 41 of 66
- Called 100.0% of time when present
- Phage (with cluster) where this start called: Affeca_45 (DE1), Ailee_44 (DE1), Angelicage_45 (DE1), Barsten_48 (DE1), BobBob_45 (DE1), Brandonk123_49 (DE1), Brawn1_44 (DE1), ChadMasterC_48 (DE1), Charming_48 (DE1), Chickadee_43 (DE3), Dextert_44 (DE3), EdmundFerry_42 (DE3), Fitzgerald_46 (DE1), Fosterous_45 (DE1), FuegoCuervo_50 (DE1), GTE6_43 (DE3), Galadriel_47 (DE1), Geodirt_46 (DE1), Jabberwocky_46 (DE1), Jflix2_86 (CF), Kamashten_45 (DE1), Keitabear_47 (DE1), Kewpiedoll_47 (DE1), Kwekel_43 (DE3), Lennon_47 (DE1), Love_51 (DE1), Madraxi_88 (CF), McCrothy_47 (DE1), McKinley_49 (DE1), MoontowerMania_47 (DE1), Nordenberg_42 (DE1), Paries_50 (DE1), REQ1_54 (CF), RiverRaider_48 (DE1), RoadKill_41 (DE3), SFuller_84 (CF), Sanjuju_46 (DE1), Sedona_47 (DE1), Shivanishola_47 (DE1), Sitar_47 (DE1), Stultus_46 (DE1), Tangent_48 (DE1), Thing3_45 (DE1), Tiamoceli_44 (DE3), Twonlo_41 (DE3), Vivi2_50 (DE1),

Summary by clusters:

There are 7 clusters represented in this pham: singleton, DE1, DE2, DE3, DE4, DE5, CF,

Info for manual annotations of cluster CF:

- Start number 26 was manually annotated 2 times for cluster CF.

Info for manual annotations of cluster DE1:

- Start number 26 was manually annotated 32 times for cluster DE1.

Info for manual annotations of cluster DE2:

- Start number 24 was manually annotated 3 times for cluster DE2.
- Start number 25 was manually annotated 6 times for cluster DE2.

Info for manual annotations of cluster DE3:

- Start number 26 was manually annotated 7 times for cluster DE3.

Info for manual annotations of cluster DE4:

- Start number 25 was manually annotated 13 times for cluster DE4.

Info for manual annotations of cluster DE5:

•Start number 25 was manually annotated 1 time for cluster DE5.

Gene Information:

Gene: APunk_49 Start: 41353, Stop: 41601, Start Num: 25

Candidate Starts for APunk_49:

(Start: 25 @41353 has 20 MA's), (29, 41416),

Gene: Abblin_48 Start: 41901, Stop: 42149, Start Num: 25

Candidate Starts for Abblin_48:

(18, 41841), (Start: 25 @41901 has 20 MA's), (29, 41964), (32, 41988),

Gene: Affeca_45 Start: 40714, Stop: 40968, Start Num: 26

Candidate Starts for Affeca_45:

(8, 40219), (18, 40645), (Start: 26 @40714 has 41 MA's), (29, 40777), (33, 40816), (37, 40843),

Gene: Ailee_44 Start: 40307, Stop: 40561, Start Num: 26

Candidate Starts for Ailee_44:

(8, 39812), (18, 40238), (Start: 26 @40307 has 41 MA's), (29, 40370), (33, 40409), (37, 40436),

Gene: Ali17_44 Start: 39603, Stop: 39860, Start Num: 24

Candidate Starts for Ali17_44:

(18, 39549), (Start: 24 @39603 has 3 MA's), (Start: 25 @39606 has 20 MA's), (28, 39639), (29, 39669), (33, 39708), (34, 39714), (37, 39738), (38, 39744), (39, 39750),

Gene: Angelicage_45 Start: 41132, Stop: 41386, Start Num: 26

Candidate Starts for Angelicage_45:

(8, 40637), (18, 41063), (Start: 26 @41132 has 41 MA's), (29, 41195), (33, 41234), (37, 41261),

Gene: Barsten_48 Start: 41287, Stop: 41541, Start Num: 26

Candidate Starts for Barsten_48:

(18, 41218), (Start: 26 @41287 has 41 MA's), (29, 41350), (33, 41389), (37, 41416),

Gene: Belphegor_47 Start: 41646, Stop: 41900, Start Num: 25

Candidate Starts for Belphegor_47:

(5, 41151), (13, 41367), (16, 41508), (18, 41589), (Start: 25 @41646 has 20 MA's), (28, 41679), (29, 41709), (33, 41748), (34, 41754), (37, 41778), (38, 41784), (51, 41856),

Gene: BigHunkinEater_51 Start: 41131, Stop: 41379, Start Num: 25

Candidate Starts for BigHunkinEater_51:

(Start: 25 @41131 has 20 MA's), (29, 41194),

Gene: BobBob_45 Start: 40405, Stop: 40659, Start Num: 26

Candidate Starts for BobBob_45:

(9, 39919), (18, 40336), (Start: 26 @40405 has 41 MA's), (29, 40468), (33, 40507), (37, 40534),

Gene: Brandonk123_49 Start: 41539, Stop: 41793, Start Num: 26

Candidate Starts for Brandonk123_49:

(3, 40948), (4, 40987), (7, 41044), (18, 41470), (Start: 26 @41539 has 41 MA's), (29, 41602), (33, 41641), (37, 41668),

Gene: Brawn1_44 Start: 40614, Stop: 40868, Start Num: 26

Candidate Starts for Brawn1_44:

(18, 40545), (Start: 26 @40614 has 41 MA's), (29, 40677), (33, 40716), (37, 40743),

Gene: ChadMasterC_48 Start: 42686, Stop: 42940, Start Num: 26

Candidate Starts for ChadMasterC_48:

(8, 42191), (18, 42617), (Start: 26 @42686 has 41 MA's), (29, 42749), (33, 42788), (37, 42815),

Gene: Charming_48 Start: 41042, Stop: 41296, Start Num: 26

Candidate Starts for Charming_48:

(8, 40547), (18, 40973), (Start: 26 @41042 has 41 MA's), (29, 41105), (33, 41144), (37, 41171),

Gene: Chickadee_43 Start: 37502, Stop: 37750, Start Num: 26

Candidate Starts for Chickadee_43:

(Start: 26 @37502 has 41 MA's), (29, 37565), (33, 37604), (51, 37709),

Gene: Delrey21_48 Start: 42667, Stop: 42915, Start Num: 25

Candidate Starts for Delrey21_48:

(18, 42595), (19, 42613), (Start: 25 @42667 has 20 MA's), (29, 42730), (32, 42754),

Gene: Dxdert_44 Start: 37764, Stop: 38012, Start Num: 26

Candidate Starts for Dxdert_44:

(Start: 26 @37764 has 41 MA's), (39, 37905),

Gene: DoctorFroggo_48 Start: 42667, Stop: 42915, Start Num: 25

Candidate Starts for DoctorFroggo_48:

(18, 42595), (19, 42613), (Start: 25 @42667 has 20 MA's), (29, 42730), (32, 42754),

Gene: EMoore_44 Start: 40804, Stop: 41061, Start Num: 24

Candidate Starts for EMoore_44:

(Start: 24 @40804 has 3 MA's), (Start: 25 @40807 has 20 MA's), (28, 40840), (29, 40870), (34, 40915), (37, 40939),

Gene: EdmundFerry_42 Start: 37543, Stop: 37791, Start Num: 26

Candidate Starts for EdmundFerry_42:

(Start: 26 @37543 has 41 MA's), (29, 37606), (33, 37645), (51, 37750),

Gene: Finkle_65 Start: 40751, Stop: 41023, Start Num: 22

Candidate Starts for Finkle_65:

(Start: 22 @40751 has 1 MA's), (29, 40835), (34, 40880), (47, 40940),

Gene: Fitzgerald_46 Start: 41944, Stop: 42198, Start Num: 26

Candidate Starts for Fitzgerald_46:

(18, 41875), (Start: 26 @41944 has 41 MA's), (29, 42007), (33, 42046), (37, 42073),

Gene: Fosterous_45 Start: 40503, Stop: 40757, Start Num: 26

Candidate Starts for Fosterous_45:

(8, 40008), (18, 40434), (Start: 26 @40503 has 41 MA's), (29, 40566), (33, 40605), (37, 40632),

Gene: FuegoCuervo_50 Start: 40371, Stop: 40625, Start Num: 26

Candidate Starts for FuegoCuervo_50:

(18, 40302), (Start: 26 @40371 has 41 MA's), (29, 40434), (33, 40473), (37, 40500),

Gene: GTE6_43 Start: 38035, Stop: 38283, Start Num: 26
Candidate Starts for GTE6_43:
(Start: 26 @38035 has 41 MA's), (29, 38098), (33, 38137), (51, 38242),

Gene: Galadriel_47 Start: 41310, Stop: 41564, Start Num: 26
Candidate Starts for Galadriel_47:
(Start: 26 @41310 has 41 MA's), (29, 41373), (33, 41412), (37, 41439),

Gene: Geodirt_46 Start: 41922, Stop: 42176, Start Num: 26
Candidate Starts for Geodirt_46:
(8, 41427), (18, 41853), (Start: 26 @41922 has 41 MA's), (29, 41985), (33, 42024), (37, 42051),

Gene: Hans_48 Start: 40246, Stop: 40500, Start Num: 25
Candidate Starts for Hans_48:
(18, 40189), (Start: 24 @40243 has 3 MA's), (Start: 25 @40246 has 20 MA's), (28, 40279), (29, 40309),
(33, 40348), (34, 40354), (37, 40378), (38, 40384), (39, 40390),

Gene: Inspectinfecti_47 Start: 40692, Stop: 40946, Start Num: 25
Candidate Starts for Inspectinfecti_47:
(18, 40635), (Start: 24 @40689 has 3 MA's), (Start: 25 @40692 has 20 MA's), (28, 40725), (29, 40755),
(33, 40794), (34, 40800), (37, 40824), (38, 40830), (39, 40836),

Gene: Jabberwocky_46 Start: 42348, Stop: 42602, Start Num: 26
Candidate Starts for Jabberwocky_46:
(18, 42279), (Start: 26 @42348 has 41 MA's), (29, 42411), (33, 42450), (37, 42477),

Gene: Jflix2_86 Start: 49722, Stop: 49988, Start Num: 26
Candidate Starts for Jflix2_86:
(Start: 26 @49722 has 41 MA's), (33, 49824), (44, 49881),

Gene: Kamashten_45 Start: 40283, Stop: 40537, Start Num: 26
Candidate Starts for Kamashten_45:
(8, 39788), (18, 40214), (Start: 26 @40283 has 41 MA's), (29, 40346), (33, 40385), (37, 40412),

Gene: Keitabear_47 Start: 41938, Stop: 42192, Start Num: 26
Candidate Starts for Keitabear_47:
(8, 41443), (18, 41869), (Start: 26 @41938 has 41 MA's), (29, 42001), (33, 42040), (37, 42067),

Gene: Kewpiedoll_47 Start: 41224, Stop: 41478, Start Num: 26
Candidate Starts for Kewpiedoll_47:
(18, 41155), (Start: 26 @41224 has 41 MA's), (29, 41287), (33, 41326), (37, 41353),

Gene: Kwekel_43 Start: 37463, Stop: 37711, Start Num: 26
Candidate Starts for Kwekel_43:
(Start: 26 @37463 has 41 MA's), (29, 37526), (33, 37565), (51, 37670),

Gene: Lennon_47 Start: 42027, Stop: 42281, Start Num: 26
Candidate Starts for Lennon_47:
(8, 41532), (18, 41958), (Start: 26 @42027 has 41 MA's), (29, 42090), (33, 42129), (37, 42156),

Gene: Leonard_46 Start: 40336, Stop: 40590, Start Num: 25
Candidate Starts for Leonard_46:

(18, 40279), (Start: 24 @40333 has 3 MA's), (Start: 25 @40336 has 20 MA's), (28, 40369), (29, 40399), (33, 40438), (34, 40444), (37, 40468), (38, 40474), (39, 40480), (50, 40534),

Gene: Lilbeanie_49 Start: 37033, Stop: 37278, Start Num: 25

Candidate Starts for Lilbeanie_49:

(Start: 25 @37033 has 20 MA's), (28, 37066), (29, 37096), (33, 37135), (45, 37198), (49, 37219), (51, 37240),

Gene: Love_51 Start: 42475, Stop: 42729, Start Num: 26

Candidate Starts for Love_51:

(8, 41980), (18, 42406), (Start: 26 @42475 has 41 MA's), (29, 42538), (33, 42577), (37, 42604),

Gene: Madraxi_88 Start: 51996, Stop: 52262, Start Num: 26

Candidate Starts for Madraxi_88:

(Start: 26 @51996 has 41 MA's), (33, 52098), (42, 52152), (44, 52155), (48, 52176), (52, 52251),

Gene: Mbo4_53 Start: 39385, Stop: 39651, Start Num: 21

Candidate Starts for Mbo4_53:

(20, 39382), (21, 39385), (29, 39472), (36, 39532), (40, 39553), (46, 39574),

Gene: McCrothy_47 Start: 41634, Stop: 41888, Start Num: 26

Candidate Starts for McCrothy_47:

(Start: 26 @41634 has 41 MA's), (29, 41697), (33, 41736), (37, 41763),

Gene: McKinley_49 Start: 41848, Stop: 42102, Start Num: 26

Candidate Starts for McKinley_49:

(18, 41779), (Start: 26 @41848 has 41 MA's), (29, 41911), (33, 41950), (37, 41977),

Gene: MelBins_47 Start: 40486, Stop: 40740, Start Num: 25

Candidate Starts for MelBins_47:

(18, 40429), (Start: 24 @40483 has 3 MA's), (Start: 25 @40486 has 20 MA's), (28, 40519), (29, 40549), (34, 40594), (37, 40618), (38, 40624),

Gene: MoontowerMania_47 Start: 41683, Stop: 41937, Start Num: 26

Candidate Starts for MoontowerMania_47:

(18, 41614), (Start: 26 @41683 has 41 MA's), (29, 41746), (33, 41785), (37, 41812),

Gene: Natkenzie_48 Start: 41901, Stop: 42149, Start Num: 25

Candidate Starts for Natkenzie_48:

(18, 41841), (Start: 25 @41901 has 20 MA's), (29, 41964), (32, 41988),

Gene: Nordenberg_42 Start: 40666, Stop: 40920, Start Num: 26

Candidate Starts for Nordenberg_42:

(3, 40075), (4, 40114), (7, 40171), (18, 40597), (Start: 26 @40666 has 41 MA's), (29, 40729), (33, 40768), (37, 40795),

Gene: Paries_50 Start: 42137, Stop: 42391, Start Num: 26

Candidate Starts for Paries_50:

(Start: 26 @42137 has 41 MA's), (29, 42200), (33, 42239), (37, 42266),

Gene: Phauci_39 Start: 37188, Stop: 37442, Start Num: 25

Candidate Starts for Phauci_39:

(Start: 24 @37185 has 3 MA's), (Start: 25 @37188 has 20 MA's), (28, 37221), (29, 37251), (33, 37290), (34, 37296), (37, 37320), (38, 37326),

Gene: Phinally_46 Start: 40330, Stop: 40587, Start Num: 24

Candidate Starts for Phinally_46:

(18, 40276), (Start: 24 @40330 has 3 MA's), (Start: 25 @40333 has 20 MA's), (28, 40366), (29, 40396), (33, 40435), (34, 40441), (37, 40465), (38, 40471), (39, 40477), (50, 40531),

Gene: Pumpkiney_49 Start: 39211, Stop: 39459, Start Num: 25

Candidate Starts for Pumpkiney_49:

(Start: 25 @39211 has 20 MA's), (29, 39274),

Gene: REQ1_54 Start: 21146, Stop: 21418, Start Num: 26

Candidate Starts for REQ1_54:

(15, 20981), (17, 20996), (Start: 26 @21146 has 41 MA's), (30, 21212), (33, 21248), (42, 21302), (44, 21305), (48, 21326), (53, 21410),

Gene: RiverRaider_48 Start: 39923, Stop: 40180, Start Num: 26

Candidate Starts for RiverRaider_48:

(Start: 26 @39923 has 41 MA's), (27, 39950), (29, 39989), (33, 40028), (37, 40055), (39, 40067), (41, 40076),

Gene: RoadKill_41 Start: 37038, Stop: 37286, Start Num: 26

Candidate Starts for RoadKill_41:

(Start: 26 @37038 has 41 MA's), (29, 37101), (33, 37140), (51, 37245),

Gene: SFuller_84 Start: 49769, Stop: 50035, Start Num: 26

Candidate Starts for SFuller_84:

(Start: 26 @49769 has 41 MA's), (33, 49871), (42, 49925), (44, 49928), (48, 49949),

Gene: Sampson_48 Start: 41846, Stop: 42094, Start Num: 25

Candidate Starts for Sampson_48:

(14, 41615), (18, 41786), (Start: 25 @41846 has 20 MA's), (29, 41909), (32, 41933),

Gene: Sanjuju_46 Start: 42077, Stop: 42331, Start Num: 26

Candidate Starts for Sanjuju_46:

(18, 42008), (Start: 26 @42077 has 41 MA's), (29, 42140), (33, 42179), (37, 42206),

Gene: Scioto_49 Start: 41902, Stop: 42150, Start Num: 25

Candidate Starts for Scioto_49:

(18, 41842), (Start: 25 @41902 has 20 MA's), (29, 41965), (32, 41989),

Gene: Sedona_47 Start: 41672, Stop: 41926, Start Num: 26

Candidate Starts for Sedona_47:

(3, 41081), (4, 41120), (7, 41177), (18, 41603), (Start: 26 @41672 has 41 MA's), (29, 41735), (33, 41774), (37, 41801),

Gene: Shivanishola_47 Start: 40342, Stop: 40596, Start Num: 26

Candidate Starts for Shivanishola_47:

(3, 39751), (4, 39790), (18, 40273), (Start: 26 @40342 has 41 MA's), (29, 40405), (33, 40444), (37, 40471),

Gene: Sitar_47 Start: 42027, Stop: 42281, Start Num: 26

Candidate Starts for Sitar_47:

(8, 41532), (18, 41958), (Start: 26 @42027 has 41 MA's), (29, 42090), (33, 42129), (37, 42156),

Gene: Stultus_46 Start: 40980, Stop: 41234, Start Num: 26

Candidate Starts for Stultus_46:

(8, 40485), (18, 40911), (Start: 26 @40980 has 41 MA's), (29, 41043), (33, 41082), (37, 41109),

Gene: Tangent_48 Start: 41054, Stop: 41308, Start Num: 26

Candidate Starts for Tangent_48:

(8, 40559), (18, 40985), (Start: 26 @41054 has 41 MA's), (29, 41117), (33, 41156), (37, 41183),

Gene: Tardus_49 Start: 41242, Stop: 41493, Start Num: 25

Candidate Starts for Tardus_49:

(18, 41182), (Start: 25 @41242 has 20 MA's), (29, 41305), (32, 41329), (35, 41353), (36, 41371),

Gene: Thing3_45 Start: 40283, Stop: 40537, Start Num: 26

Candidate Starts for Thing3_45:

(8, 39788), (18, 40214), (Start: 26 @40283 has 41 MA's), (29, 40346), (33, 40385), (37, 40412),

Gene: Tiamoceli_44 Start: 38359, Stop: 38607, Start Num: 26

Candidate Starts for Tiamoceli_44:

(Start: 26 @38359 has 41 MA's), (29, 38422), (33, 38461), (51, 38566),

Gene: Tonitrus_77 Start: 54338, Stop: 54619, Start Num: 23

Candidate Starts for Tonitrus_77:

(Start: 23 @54338 has 1 MA's), (31, 54437), (36, 54494), (43, 54515), (50, 54551), (51, 54563),

Gene: Twonlo_41 Start: 36989, Stop: 37237, Start Num: 26

Candidate Starts for Twonlo_41:

(Start: 26 @36989 has 41 MA's), (29, 37052), (33, 37091), (51, 37196),

Gene: Verity_48 Start: 42667, Stop: 42915, Start Num: 25

Candidate Starts for Verity_48:

(18, 42595), (19, 42613), (Start: 25 @42667 has 20 MA's), (29, 42730), (32, 42754),

Gene: ViaConlectus_48 Start: 40525, Stop: 40773, Start Num: 25

Candidate Starts for ViaConlectus_48:

(Start: 25 @40525 has 20 MA's), (29, 40588),

Gene: Vivi2_50 Start: 42081, Stop: 42335, Start Num: 26

Candidate Starts for Vivi2_50:

(18, 42012), (Start: 26 @42081 has 41 MA's), (29, 42144), (33, 42183), (37, 42210),

Gene: Zipp_49 Start: 42582, Stop: 42830, Start Num: 25

Candidate Starts for Zipp_49:

(18, 42510), (19, 42528), (Start: 25 @42582 has 20 MA's), (29, 42645), (32, 42669),

Gene: Zitch_51 Start: 40681, Stop: 40929, Start Num: 25

Candidate Starts for Zitch_51:

(1, 40042), (2, 40057), (6, 40174), (10, 40195), (11, 40243), (12, 40252), (18, 40621), (Start: 25 @40681 has 20 MA's), (29, 40744),