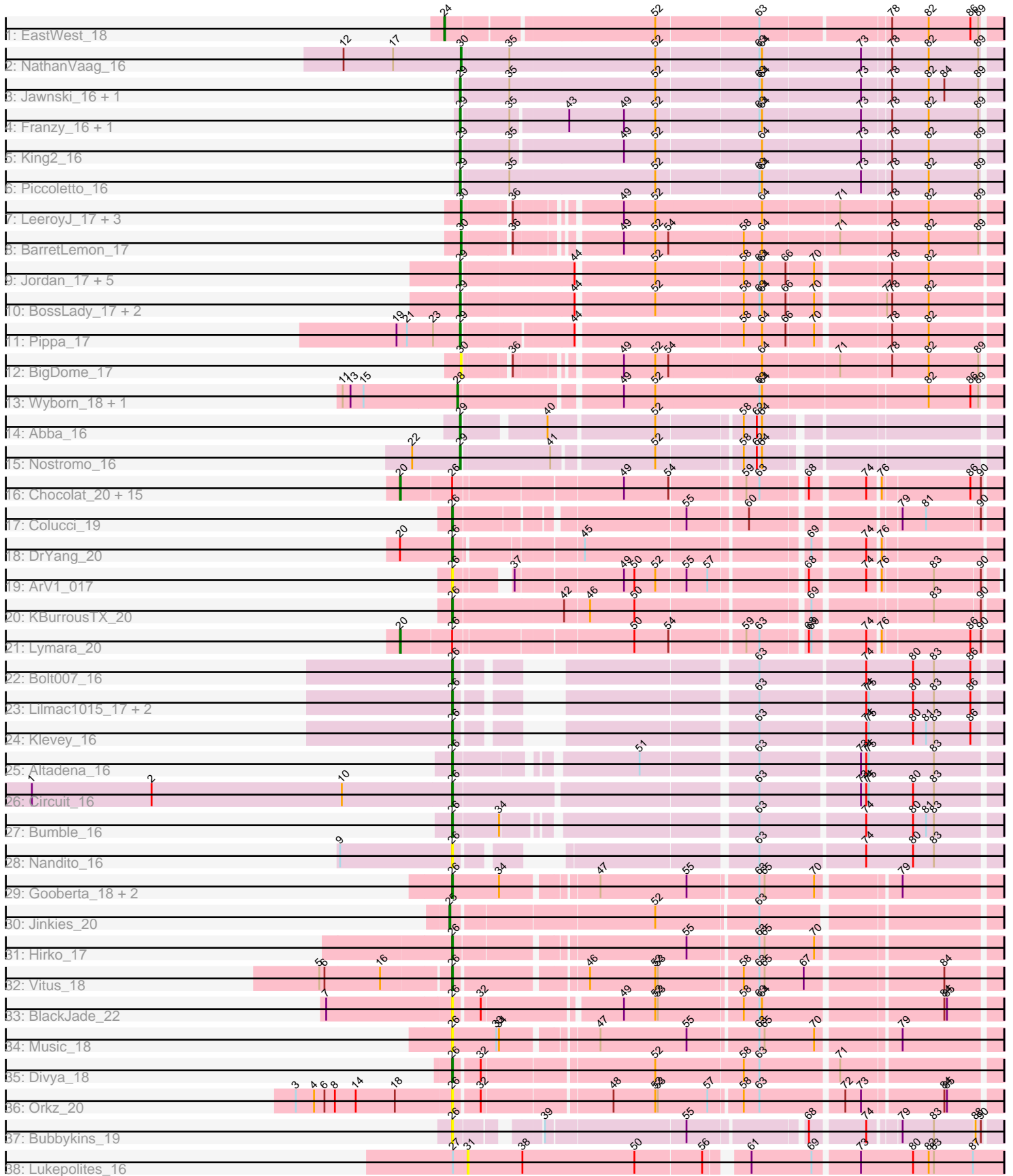


Pham 308539



Note: Tracks are now grouped by subcluster and scaled. Switching in subcluster is indicated by changes in track color. Track scale is now set by default to display the region 30 bp upstream of start 1 to 30 bp downstream of the last possible start. If this default region is judged to be packed too tightly with annotated starts, the track will be further scaled to only show that region of the ORF with annotated starts. This action will be indicated by adding "Zoomed" to the title. For starts, yellow indicates the location of called starts comprised solely of Glimmer/GeneMark auto-annotations, green indicates the location of called starts with at least 1 manual gene annotation.

Pham 308539 Report

This analysis was run 06/27/26 on database version 652.

Pham number 308539 has 70 members, 10 are drafts.

Phages represented in each track:

- Track 1 : EastWest_18
- Track 2 : NathanVaag_16
- Track 3 : Jawnski_16, Beans_16
- Track 4 : Franzy_16, Brent_16
- Track 5 : King2_16
- Track 6 : Piccoletto_16
- Track 7 : LeeroyJ_17, Timinator_17, GravityBall_17, StevieBAY_17
- Track 8 : BarretLemon_17
- Track 9 : Jordan_17, Shade_17, Zartrosa_17, Sonny_17, TaeYoung_17, JKerns_17
- Track 10 : BossLady_17, Martha_17, Grekaycon_17
- Track 11 : Pippa_17
- Track 12 : BigDome_17
- Track 13 : Wyborn_18, Sicarius2_18
- Track 14 : Abba_16
- Track 15 : Nostromo_16
- Track 16 : Chocolat_20, Kabreeze_20, Scavito_20, Conboy_20, Chipper1996_200, PrincessTrina_20, JaNo_20, RosiePosie_20, HumptyDumpty_20, Chubster_20, MoyaNatalis_20, Linus_20, Mordred_20, Tophat_20, JayCookie_20, EdgarPoe_20
- Track 17 : Colucci_19
- Track 18 : DrYang_20
- Track 19 : ArV1_017
- Track 20 : KBurrousTX_20
- Track 21 : Lymara_20
- Track 22 : Bolt007_16
- Track 23 : Lilmac1015_17, Prairie_16, CalWood4100_17
- Track 24 : Klevey_16
- Track 25 : Altadena_16
- Track 26 : Circuit_16
- Track 27 : Bumble_16
- Track 28 : Nandito_16
- Track 29 : Gooberta_18, GoldDust_18, Vibaki_18
- Track 30 : Jinkies_20
- Track 31 : Hirko_17
- Track 32 : Vitus_18
- Track 33 : BlackJade_22
- Track 34 : Music_18
- Track 35 : Divya_18

- Track 36 : Orkz_20
- Track 37 : Bubbykins_19
- Track 38 : Lukepolites_16

Summary of Final Annotations (See graph section above for start numbers):

The start number called the most often in the published annotations is 29, it was called in 18 of the 60 non-draft genes in the pham.

Genes that call this "Most Annotated" start:

- Abba_16, Beans_16, BossLady_17, Brent_16, Franzy_16, Grekaycon_17, JKerns_17, Jawnski_16, Jordan_17, King2_16, Martha_17, Nostromo_16, Piccoletto_16, Pippa_17, Shade_17, Sonny_17, TaeYoung_17, Zartrosa_17,

Genes that have the "Most Annotated" start but do not call it:

-

Genes that do not have the "Most Annotated" start:

- Altadena_16, ArV1_017, BarretLemon_17, BigDome_17, BlackJade_22, Bolt007_16, Bubbykins_19, Bumble_16, CalWood4100_17, Chipper1996_200, Chocolat_20, Chubster_20, Circuit_16, Colucci_19, Conboy_20, Divya_18, DrYang_20, EastWest_18, EdgarPoe_20, GoldDust_18, Gooberta_18, GravityBall_17, Hirko_17, HumptyDumpty_20, JaNo_20, JayCookie_20, Jinkies_20, KBurrousTX_20, Kabreeze_20, Klevey_16, LeeroyJ_17, Lilmac1015_17, Linus_20, Lukepolites_16, Lymara_20, Mordred_20, MoyaNatalis_20, Music_18, Nandito_16, NathanVaag_16, Orkz_20, Prairie_16, PrincessTrina_20, RosiePosie_20, Scavito_20, Sicarius2_18, StevieBAY_17, Timinator_17, Tophat_20, Vibaki_18, Vitus_18, Wyborn_18,

Summary by start number:

Start 20:

- Found in 18 of 70 (25.7%) of genes in pham
- Manual Annotations of this start: 16 of 60
- Called 94.4% of time when present
- Phage (with cluster) where this start called: Chipper1996_200 (AR), Chocolat_20 (AR), Chubster_20 (AR), Conboy_20 (AR), EdgarPoe_20 (AR), HumptyDumpty_20 (AR), JaNo_20 (AR), JayCookie_20 (AR), Kabreeze_20 (AR), Linus_20 (AR), Lymara_20 (AR), Mordred_20 (AR), MoyaNatalis_20 (AR), PrincessTrina_20 (AR), RosiePosie_20 (AR), Scavito_20 (AR), Tophat_20 (AR),

Start 24:

- Found in 1 of 70 (1.4%) of genes in pham
- Manual Annotations of this start: 1 of 60
- Called 100.0% of time when present
- Phage (with cluster) where this start called: EastWest_18 (AO),

Start 25:

- Found in 1 of 70 (1.4%) of genes in pham
- Manual Annotations of this start: 1 of 60

- Called 100.0% of time when present
- Phage (with cluster) where this start called: Jinkies_20 (FL),

Start 26:

- Found in 40 of 70 (57.1%) of genes in pham
- Manual Annotations of this start: 16 of 60
- Called 57.5% of time when present
- Phage (with cluster) where this start called: Altadena_16 (FH), ArV1_017 (AR), BlackJade_22 (FL), Bolt007_16 (FH), Bubbykins_19 (UNK), Bumble_16 (FH), CalWood4100_17 (FH), Circuit_16 (FH), Colucci_19 (AR), Divya_18 (FL), DrYang_20 (AR), GoldDust_18 (FL), Gooberta_18 (FL), Hirko_17 (FL), KBurrousTX_20 (AR), Klevey_16 (FH), Lilmac1015_17 (FH), Music_18 (FL), Nandito_16 (FH), Orkz_20 (FL), Prairie_16 (FH), Vibaki_18 (FL), Vitus_18 (FL),

Start 28:

- Found in 2 of 70 (2.9%) of genes in pham
- Manual Annotations of this start: 2 of 60
- Called 100.0% of time when present
- Phage (with cluster) where this start called: Sicarius2_18 (AO2), Wyborn_18 (AO2),

Start 29:

- Found in 18 of 70 (25.7%) of genes in pham
- Manual Annotations of this start: 18 of 60
- Called 100.0% of time when present
- Phage (with cluster) where this start called: Abba_16 (AO3), Beans_16 (AO1), BossLady_17 (AO2), Brent_16 (AO1), Franzy_16 (AO1), Grekaycon_17 (AO2), JKerns_17 (AO2), Jawnski_16 (AO1), Jordan_17 (AO2), King2_16 (AO1), Martha_17 (AO2), Nostromo_16 (AO3), Piccoletto_16 (AO1), Pippa_17 (AO2), Shade_17 (AO2), Sonny_17 (AO2), TaeYoung_17 (AO2), Zartrosa_17 (AO2),

Start 30:

- Found in 7 of 70 (10.0%) of genes in pham
- Manual Annotations of this start: 6 of 60
- Called 100.0% of time when present
- Phage (with cluster) where this start called: BarretLemon_17 (AO2), BigDome_17 (AO2), GravityBall_17 (AO2), LeeroyJ_17 (AO2), NathanVaag_16 (AO1), StevieBAY_17 (AO2), Timinator_17 (AO2),

Start 31:

- Found in 1 of 70 (1.4%) of genes in pham
- No Manual Annotations of this start.
- Called 100.0% of time when present
- Phage (with cluster) where this start called: Lukepolites_16 (singleton),

Summary by clusters:

There are 9 clusters represented in this pham: singleton, AO, AR, AO3, AO2, AO1, FH, UNK, FL,

Info for manual annotations of cluster AO:

- Start number 24 was manually annotated 1 time for cluster AO.

Info for manual annotations of cluster AO1:

- Start number 29 was manually annotated 6 times for cluster AO1.
- Start number 30 was manually annotated 1 time for cluster AO1.

Info for manual annotations of cluster AO2:

- Start number 28 was manually annotated 2 times for cluster AO2.
- Start number 29 was manually annotated 10 times for cluster AO2.
- Start number 30 was manually annotated 5 times for cluster AO2.

Info for manual annotations of cluster AO3:

- Start number 29 was manually annotated 2 times for cluster AO3.

Info for manual annotations of cluster AR:

- Start number 20 was manually annotated 16 times for cluster AR.
- Start number 26 was manually annotated 3 times for cluster AR.

Info for manual annotations of cluster FH:

- Start number 26 was manually annotated 7 times for cluster FH.

Info for manual annotations of cluster FL:

- Start number 25 was manually annotated 1 time for cluster FL.
- Start number 26 was manually annotated 6 times for cluster FL.

Gene Information:

Gene: Abba_16 Start: 12747, Stop: 13298, Start Num: 29

Candidate Starts for Abba_16:

(Start: 29 @12747 has 18 MA's), (40, 12828), (52, 12945), (58, 13035), (62, 13050), (64, 13056),

Gene: Altadena_16 Start: 12369, Stop: 12935, Start Num: 26

Candidate Starts for Altadena_16:

(Start: 26 @12369 has 16 MA's), (51, 12549), (63, 12672), (73, 12780), (74, 12786), (75, 12789), (83, 12864),

Gene: ArV1_017 Start: 13308, Stop: 13847, Start Num: 26

Candidate Starts for ArV1_017:

(Start: 26 @13308 has 16 MA's), (37, 13356), (49, 13470), (50, 13482), (52, 13506), (55, 13539), (57, 13563), (68, 13659), (74, 13716), (76, 13728), (83, 13782), (90, 13833),

Gene: BarretLemon_17 Start: 12966, Stop: 13523, Start Num: 30

Candidate Starts for BarretLemon_17:

(Start: 30 @12966 has 6 MA's), (36, 13011), (49, 13110), (52, 13146), (54, 13161), (58, 13242), (64, 13263), (71, 13347), (78, 13404), (82, 13446), (89, 13503),

Gene: Beans_16 Start: 12640, Stop: 13233, Start Num: 29

Candidate Starts for Beans_16:

(Start: 29 @12640 has 18 MA's), (35, 12691), (52, 12856), (63, 12970), (64, 12973), (73, 13084), (78, 13114), (82, 13156), (84, 13174), (89, 13213),

Gene: BigDome_17 Start: 12954, Stop: 13511, Start Num: 30

Candidate Starts for BigDome_17:

(Start: 30 @12954 has 6 MA's), (36, 12999), (49, 13098), (52, 13134), (54, 13149), (64, 13251), (71, 13335), (78, 13392), (82, 13434), (89, 13491),

Gene: BlackJade_22 Start: 14610, Stop: 15185, Start Num: 26

Candidate Starts for BlackJade_22:

(7, 14469), (Start: 26 @14610 has 16 MA's), (32, 14637), (49, 14784), (52, 14820), (53, 14823), (58, 14913), (63, 14931), (64, 14934), (84, 15126), (85, 15129),

Gene: Bolt007_16 Start: 12245, Stop: 12781, Start Num: 26

Candidate Starts for Bolt007_16:

(Start: 26 @12245 has 16 MA's), (63, 12515), (74, 12632), (80, 12686), (83, 12710), (86, 12752),

Gene: BossLady_17 Start: 12960, Stop: 13541, Start Num: 29

Candidate Starts for BossLady_17:

(Start: 29 @12960 has 18 MA's), (44, 13080), (52, 13164), (58, 13263), (63, 13281), (64, 13284), (66, 13311), (70, 13341), (77, 13413), (78, 13419), (82, 13461),

Gene: Brent_16 Start: 12623, Stop: 13210, Start Num: 29

Candidate Starts for Brent_16:

(Start: 29 @12623 has 18 MA's), (35, 12674), (43, 12734), (49, 12797), (52, 12833), (63, 12947), (64, 12950), (73, 13061), (78, 13091), (82, 13133), (89, 13190),

Gene: Bubbykins_19 Start: 14513, Stop: 15055, Start Num: 26

Candidate Starts for Bubbykins_19:

(Start: 26 @14513 has 16 MA's), (39, 14588), (55, 14741), (68, 14861), (74, 14918), (79, 14948), (83, 14984), (88, 15029), (90, 15035),

Gene: Bumble_16 Start: 12365, Stop: 12937, Start Num: 26

Candidate Starts for Bumble_16:

(Start: 26 @12365 has 16 MA's), (34, 12416), (63, 12674), (74, 12788), (80, 12842), (81, 12857), (83, 12866),

Gene: CalWood4100_17 Start: 12225, Stop: 12761, Start Num: 26

Candidate Starts for CalWood4100_17:

(Start: 26 @12225 has 16 MA's), (63, 12495), (74, 12612), (75, 12615), (80, 12666), (83, 12690), (86, 12732),

Gene: Chipper1996_200 Start: 14908, Stop: 15531, Start Num: 20

Candidate Starts for Chipper1996_200:

(Start: 20 @14908 has 16 MA's), (Start: 26 @14965 has 16 MA's), (49, 15145), (54, 15196), (59, 15274), (63, 15289), (68, 15334), (74, 15391), (76, 15403), (86, 15499), (90, 15511),

Gene: Chocolat_20 Start: 14909, Stop: 15532, Start Num: 20

Candidate Starts for Chocolat_20:

(Start: 20 @14909 has 16 MA's), (Start: 26 @14966 has 16 MA's), (49, 15146), (54, 15197), (59, 15275), (63, 15290), (68, 15335), (74, 15392), (76, 15404), (86, 15500), (90, 15512),

Gene: Chubster_20 Start: 14679, Stop: 15302, Start Num: 20

Candidate Starts for Chubster_20:

(Start: 20 @14679 has 16 MA's), (Start: 26 @14736 has 16 MA's), (49, 14916), (54, 14967), (59, 15045), (63, 15060), (68, 15105), (74, 15162), (76, 15174), (86, 15270), (90, 15282),

Gene: Circuit_16 Start: 12357, Stop: 12947, Start Num: 26

Candidate Starts for Circuit_16:

(1, 11874), (2, 12012), (10, 12231), (Start: 26 @12357 has 16 MA's), (63, 12684), (73, 12792), (74, 12798), (75, 12801), (80, 12852), (83, 12876),

Gene: Colucci_19 Start: 14456, Stop: 15007, Start Num: 26

Candidate Starts for Colucci_19:

(Start: 26 @14456 has 16 MA's), (55, 14693), (60, 14756), (79, 14900), (81, 14927), (90, 14987),

Gene: Conboy_20 Start: 14907, Stop: 15530, Start Num: 20

Candidate Starts for Conboy_20:

(Start: 20 @14907 has 16 MA's), (Start: 26 @14964 has 16 MA's), (49, 15144), (54, 15195), (59, 15273), (63, 15288), (68, 15333), (74, 15390), (76, 15402), (86, 15498), (90, 15510),

Gene: Divya_18 Start: 12931, Stop: 13515, Start Num: 26

Candidate Starts for Divya_18:

(Start: 26 @12931 has 16 MA's), (32, 12958), (52, 13144), (58, 13243), (63, 13261), (71, 13345),

Gene: DrYang_20 Start: 14938, Stop: 15498, Start Num: 26

Candidate Starts for DrYang_20:

(Start: 20 @14878 has 16 MA's), (Start: 26 @14938 has 16 MA's), (45, 15067), (69, 15304), (74, 15358), (76, 15370),

Gene: EastWest_18 Start: 12936, Stop: 13532, Start Num: 24

Candidate Starts for EastWest_18:

(Start: 24 @12936 has 1 MA's), (52, 13161), (63, 13275), (78, 13413), (82, 13455), (86, 13503), (89, 13512),

Gene: EdgarPoe_20 Start: 14907, Stop: 15530, Start Num: 20

Candidate Starts for EdgarPoe_20:

(Start: 20 @14907 has 16 MA's), (Start: 26 @14964 has 16 MA's), (49, 15144), (54, 15195), (59, 15273), (63, 15288), (68, 15333), (74, 15390), (76, 15402), (86, 15498), (90, 15510),

Gene: Franzy_16 Start: 12623, Stop: 13210, Start Num: 29

Candidate Starts for Franzy_16:

(Start: 29 @12623 has 18 MA's), (35, 12674), (43, 12734), (49, 12797), (52, 12833), (63, 12947), (64, 12950), (73, 13061), (78, 13091), (82, 13133), (89, 13190),

Gene: GoldDust_18 Start: 14535, Stop: 15113, Start Num: 26

Candidate Starts for GoldDust_18:

(Start: 26 @14535 has 16 MA's), (34, 14589), (47, 14685), (55, 14784), (63, 14859), (65, 14865), (70, 14922), (79, 15006),

Gene: Gooberta_18 Start: 14534, Stop: 15112, Start Num: 26

Candidate Starts for Gooberta_18:

(Start: 26 @14534 has 16 MA's), (34, 14588), (47, 14684), (55, 14783), (63, 14858), (65, 14864), (70, 14921), (79, 15005),

Gene: GravityBall_17 Start: 12965, Stop: 13522, Start Num: 30

Candidate Starts for GravityBall_17:

(Start: 30 @12965 has 6 MA's), (36, 13010), (49, 13109), (52, 13145), (64, 13262), (71, 13346), (78, 13403), (82, 13445), (89, 13502),

Gene: Grekaycon_17 Start: 12969, Stop: 13550, Start Num: 29

Candidate Starts for Grekaycon_17:

(Start: 29 @12969 has 18 MA's), (44, 13089), (52, 13173), (58, 13272), (63, 13290), (64, 13293), (66, 13320), (70, 13350), (77, 13422), (78, 13428), (82, 13470),

Gene: Hirko_17 Start: 13972, Stop: 14544, Start Num: 26

Candidate Starts for Hirko_17:

(Start: 26 @13972 has 16 MA's), (55, 14215), (63, 14290), (65, 14296), (70, 14353),

Gene: HumptyDumpty_20 Start: 14906, Stop: 15529, Start Num: 20

Candidate Starts for HumptyDumpty_20:

(Start: 20 @14906 has 16 MA's), (Start: 26 @14963 has 16 MA's), (49, 15143), (54, 15194), (59, 15272), (63, 15287), (68, 15332), (74, 15389), (76, 15401), (86, 15497), (90, 15509),

Gene: JKerns_17 Start: 12996, Stop: 13577, Start Num: 29

Candidate Starts for JKerns_17:

(Start: 29 @12996 has 18 MA's), (44, 13116), (52, 13200), (58, 13299), (63, 13317), (64, 13320), (66, 13347), (70, 13377), (78, 13455), (82, 13497),

Gene: JaNo_20 Start: 14906, Stop: 15529, Start Num: 20

Candidate Starts for JaNo_20:

(Start: 20 @14906 has 16 MA's), (Start: 26 @14963 has 16 MA's), (49, 15143), (54, 15194), (59, 15272), (63, 15287), (68, 15332), (74, 15389), (76, 15401), (86, 15497), (90, 15509),

Gene: Jawnski_16 Start: 12635, Stop: 13228, Start Num: 29

Candidate Starts for Jawnski_16:

(Start: 29 @12635 has 18 MA's), (35, 12686), (52, 12851), (63, 12965), (64, 12968), (73, 13079), (78, 13109), (82, 13151), (84, 13169), (89, 13208),

Gene: JayCookie_20 Start: 14909, Stop: 15532, Start Num: 20

Candidate Starts for JayCookie_20:

(Start: 20 @14909 has 16 MA's), (Start: 26 @14966 has 16 MA's), (49, 15146), (54, 15197), (59, 15275), (63, 15290), (68, 15335), (74, 15392), (76, 15404), (86, 15500), (90, 15512),

Gene: Jinkies_20 Start: 15297, Stop: 15881, Start Num: 25

Candidate Starts for Jinkies_20:

(Start: 25 @15297 has 1 MA's), (52, 15519), (63, 15630),

Gene: Jordan_17 Start: 12966, Stop: 13547, Start Num: 29

Candidate Starts for Jordan_17:

(Start: 29 @12966 has 18 MA's), (44, 13086), (52, 13170), (58, 13269), (63, 13287), (64, 13290), (66, 13317), (70, 13347), (78, 13425), (82, 13467),

Gene: KBurrousTX_20 Start: 14758, Stop: 15333, Start Num: 26

Candidate Starts for KBurrousTX_20:

(Start: 26 @14758 has 16 MA's), (42, 14881), (46, 14908), (50, 14959), (69, 15139), (83, 15262), (90, 15313),

Gene: Kabreeze_20 Start: 14906, Stop: 15529, Start Num: 20

Candidate Starts for Kabreeze_20:

(Start: 20 @14906 has 16 MA's), (Start: 26 @14963 has 16 MA's), (49, 15143), (54, 15194), (59, 15272), (63, 15287), (68, 15332), (74, 15389), (76, 15401), (86, 15497), (90, 15509),

Gene: King2_16 Start: 12625, Stop: 13212, Start Num: 29

Candidate Starts for King2_16:

(Start: 29 @12625 has 18 MA's), (35, 12676), (49, 12799), (52, 12835), (64, 12952), (73, 13063), (78, 13093), (82, 13135), (89, 13192),

Gene: Klevey_16 Start: 12235, Stop: 12771, Start Num: 26

Candidate Starts for Klevey_16:

(Start: 26 @12235 has 16 MA's), (63, 12505), (74, 12622), (75, 12625), (80, 12676), (81, 12691), (83, 12700), (86, 12742),

Gene: LeeroyJ_17 Start: 12965, Stop: 13522, Start Num: 30

Candidate Starts for LeeroyJ_17:

(Start: 30 @12965 has 6 MA's), (36, 13010), (49, 13109), (52, 13145), (64, 13262), (71, 13346), (78, 13403), (82, 13445), (89, 13502),

Gene: Lilmac1015_17 Start: 12225, Stop: 12761, Start Num: 26

Candidate Starts for Lilmac1015_17:

(Start: 26 @12225 has 16 MA's), (63, 12495), (74, 12612), (75, 12615), (80, 12666), (83, 12690), (86, 12732),

Gene: Linus_20 Start: 14906, Stop: 15529, Start Num: 20

Candidate Starts for Linus_20:

(Start: 20 @14906 has 16 MA's), (Start: 26 @14963 has 16 MA's), (49, 15143), (54, 15194), (59, 15272), (63, 15287), (68, 15332), (74, 15389), (76, 15401), (86, 15497), (90, 15509),

Gene: Lukepolites_16 Start: 12548, Stop: 13129, Start Num: 31

Candidate Starts for Lukepolites_16:

(27, 12533), (31, 12548), (38, 12611), (50, 12740), (56, 12815), (61, 12851), (69, 12920), (73, 12968), (80, 13025), (82, 13043), (83, 13049), (87, 13094),

Gene: Lymara_20 Start: 14907, Stop: 15530, Start Num: 20

Candidate Starts for Lymara_20:

(Start: 20 @14907 has 16 MA's), (Start: 26 @14964 has 16 MA's), (50, 15156), (54, 15195), (59, 15273), (63, 15288), (68, 15333), (69, 15336), (74, 15390), (76, 15402), (86, 15498), (90, 15510),

Gene: Martha_17 Start: 12907, Stop: 13488, Start Num: 29

Candidate Starts for Martha_17:

(Start: 29 @12907 has 18 MA's), (44, 13027), (52, 13111), (58, 13210), (63, 13228), (64, 13231), (66, 13258), (70, 13288), (77, 13360), (78, 13366), (82, 13408),

Gene: Mordred_20 Start: 14906, Stop: 15529, Start Num: 20

Candidate Starts for Mordred_20:

(Start: 20 @14906 has 16 MA's), (Start: 26 @14963 has 16 MA's), (49, 15143), (54, 15194), (59, 15272), (63, 15287), (68, 15332), (74, 15389), (76, 15401), (86, 15497), (90, 15509),

Gene: MoyaNatalis_20 Start: 14909, Stop: 15532, Start Num: 20

Candidate Starts for MoyaNatalis_20:

(Start: 20 @14909 has 16 MA's), (Start: 26 @14966 has 16 MA's), (49, 15146), (54, 15197), (59, 15275), (63, 15290), (68, 15335), (74, 15392), (76, 15404), (86, 15500), (90, 15512),

Gene: Music_18 Start: 14404, Stop: 14982, Start Num: 26

Candidate Starts for Music_18:

(Start: 26 @14404 has 16 MA's), (33, 14455), (34, 14458), (47, 14554), (55, 14653), (63, 14728), (65, 14734), (70, 14791), (79, 14875),

Gene: Nandito_16 Start: 12328, Stop: 12861, Start Num: 26

Candidate Starts for Nandito_16:

(9, 12199), (Start: 26 @12328 has 16 MA's), (63, 12595), (74, 12712), (80, 12766), (83, 12790),

Gene: NathanVaag_16 Start: 12628, Stop: 13221, Start Num: 30

Candidate Starts for NathanVaag_16:

(12, 12493), (17, 12550), (Start: 30 @12628 has 6 MA's), (35, 12679), (52, 12844), (63, 12958), (64, 12961), (73, 13072), (78, 13102), (82, 13144), (89, 13201),

Gene: Nostromo_16 Start: 12952, Stop: 13509, Start Num: 29

Candidate Starts for Nostromo_16:

(22, 12898), (Start: 29 @12952 has 18 MA's), (41, 13048), (52, 13156), (58, 13246), (62, 13261), (64, 13267),

Gene: Orkz_20 Start: 13023, Stop: 13601, Start Num: 26

Candidate Starts for Orkz_20:

(3, 12846), (4, 12867), (6, 12879), (8, 12891), (14, 12915), (18, 12960), (Start: 26 @13023 has 16 MA's), (32, 13050), (48, 13188), (52, 13236), (53, 13239), (57, 13296), (58, 13329), (63, 13347), (72, 13437), (73, 13455), (84, 13542), (85, 13545),

Gene: Piccoletto_16 Start: 12628, Stop: 13221, Start Num: 29

Candidate Starts for Piccoletto_16:

(Start: 29 @12628 has 18 MA's), (35, 12679), (52, 12844), (63, 12958), (64, 12961), (73, 13072), (78, 13102), (82, 13144), (89, 13201),

Gene: Pippa_17 Start: 13004, Stop: 13579, Start Num: 29

Candidate Starts for Pippa_17:

(19, 12932), (21, 12944), (23, 12974), (Start: 29 @13004 has 18 MA's), (44, 13118), (58, 13301), (64, 13322), (66, 13349), (70, 13379), (78, 13457), (82, 13499),

Gene: Prairie_16 Start: 12232, Stop: 12768, Start Num: 26

Candidate Starts for Prairie_16:

(Start: 26 @12232 has 16 MA's), (63, 12502), (74, 12619), (75, 12622), (80, 12673), (83, 12697), (86, 12739),

Gene: PrincessTrina_20 Start: 14909, Stop: 15532, Start Num: 20

Candidate Starts for PrincessTrina_20:

(Start: 20 @14909 has 16 MA's), (Start: 26 @14966 has 16 MA's), (49, 15146), (54, 15197), (59, 15275), (63, 15290), (68, 15335), (74, 15392), (76, 15404), (86, 15500), (90, 15512),

Gene: RosiePosie_20 Start: 14909, Stop: 15532, Start Num: 20

Candidate Starts for RosiePosie_20:

(Start: 20 @14909 has 16 MA's), (Start: 26 @14966 has 16 MA's), (49, 15146), (54, 15197), (59, 15275), (63, 15290), (68, 15335), (74, 15392), (76, 15404), (86, 15500), (90, 15512),

Gene: Scavito_20 Start: 14906, Stop: 15529, Start Num: 20

Candidate Starts for Scavito_20:

(Start: 20 @14906 has 16 MA's), (Start: 26 @14963 has 16 MA's), (49, 15143), (54, 15194), (59, 15272), (63, 15287), (68, 15332), (74, 15389), (76, 15401), (86, 15497), (90, 15509),

Gene: Shade_17 Start: 12945, Stop: 13526, Start Num: 29

Candidate Starts for Shade_17:

(Start: 29 @12945 has 18 MA's), (44, 13065), (52, 13149), (58, 13248), (63, 13266), (64, 13269), (66, 13296), (70, 13326), (78, 13404), (82, 13446),

Gene: Sicarius2_18 Start: 13443, Stop: 14027, Start Num: 28

Candidate Starts for Sicarius2_18:

(11, 13314), (13, 13323), (15, 13338), (Start: 28 @13443 has 2 MA's), (49, 13614), (52, 13650), (63, 13767), (64, 13770), (82, 13950), (86, 13998), (89, 14007),

Gene: Sonny_17 Start: 12966, Stop: 13547, Start Num: 29

Candidate Starts for Sonny_17:

(Start: 29 @12966 has 18 MA's), (44, 13086), (52, 13170), (58, 13269), (63, 13287), (64, 13290), (66, 13317), (70, 13347), (78, 13425), (82, 13467),

Gene: StevieBAY_17 Start: 12965, Stop: 13522, Start Num: 30

Candidate Starts for StevieBAY_17:

(Start: 30 @12965 has 6 MA's), (36, 13010), (49, 13109), (52, 13145), (64, 13262), (71, 13346), (78, 13403), (82, 13445), (89, 13502),

Gene: TaeYoung_17 Start: 12970, Stop: 13551, Start Num: 29

Candidate Starts for TaeYoung_17:

(Start: 29 @12970 has 18 MA's), (44, 13090), (52, 13174), (58, 13273), (63, 13291), (64, 13294), (66, 13321), (70, 13351), (78, 13429), (82, 13471),

Gene: Timinator_17 Start: 12965, Stop: 13522, Start Num: 30

Candidate Starts for Timinator_17:

(Start: 30 @12965 has 6 MA's), (36, 13010), (49, 13109), (52, 13145), (64, 13262), (71, 13346), (78, 13403), (82, 13445), (89, 13502),

Gene: Tophat_20 Start: 14908, Stop: 15531, Start Num: 20

Candidate Starts for Tophat_20:

(Start: 20 @14908 has 16 MA's), (Start: 26 @14965 has 16 MA's), (49, 15145), (54, 15196), (59, 15274), (63, 15289), (68, 15334), (74, 15391), (76, 15403), (86, 15499), (90, 15511),

Gene: Vibaki_18 Start: 14416, Stop: 14994, Start Num: 26

Candidate Starts for Vibaki_18:

(Start: 26 @14416 has 16 MA's), (34, 14470), (47, 14566), (55, 14665), (63, 14740), (65, 14746), (70, 14803), (79, 14887),

Gene: Vitus_18 Start: 14206, Stop: 14781, Start Num: 26

Candidate Starts for Vitus_18:

(5, 14062), (6, 14068), (16, 14131), (Start: 26 @14206 has 16 MA's), (46, 14341), (52, 14416), (53, 14419), (58, 14509), (63, 14527), (65, 14533), (67, 14578), (84, 14722),

Gene: Wyborn_18 Start: 13304, Stop: 13888, Start Num: 28

Candidate Starts for Wyborn_18:

(11, 13175), (13, 13184), (15, 13199), (Start: 28 @13304 has 2 MA's), (49, 13475), (52, 13511), (63, 13628), (64, 13631), (82, 13811), (86, 13859), (89, 13868),

Gene: Zartrosa_17 Start: 12969, Stop: 13550, Start Num: 29

Candidate Starts for Zartrosa_17:

(Start: 29 @12969 has 18 MA's), (44, 13089), (52, 13173), (58, 13272), (63, 13290), (64, 13293), (66, 13320), (70, 13350), (78, 13428), (82, 13470),