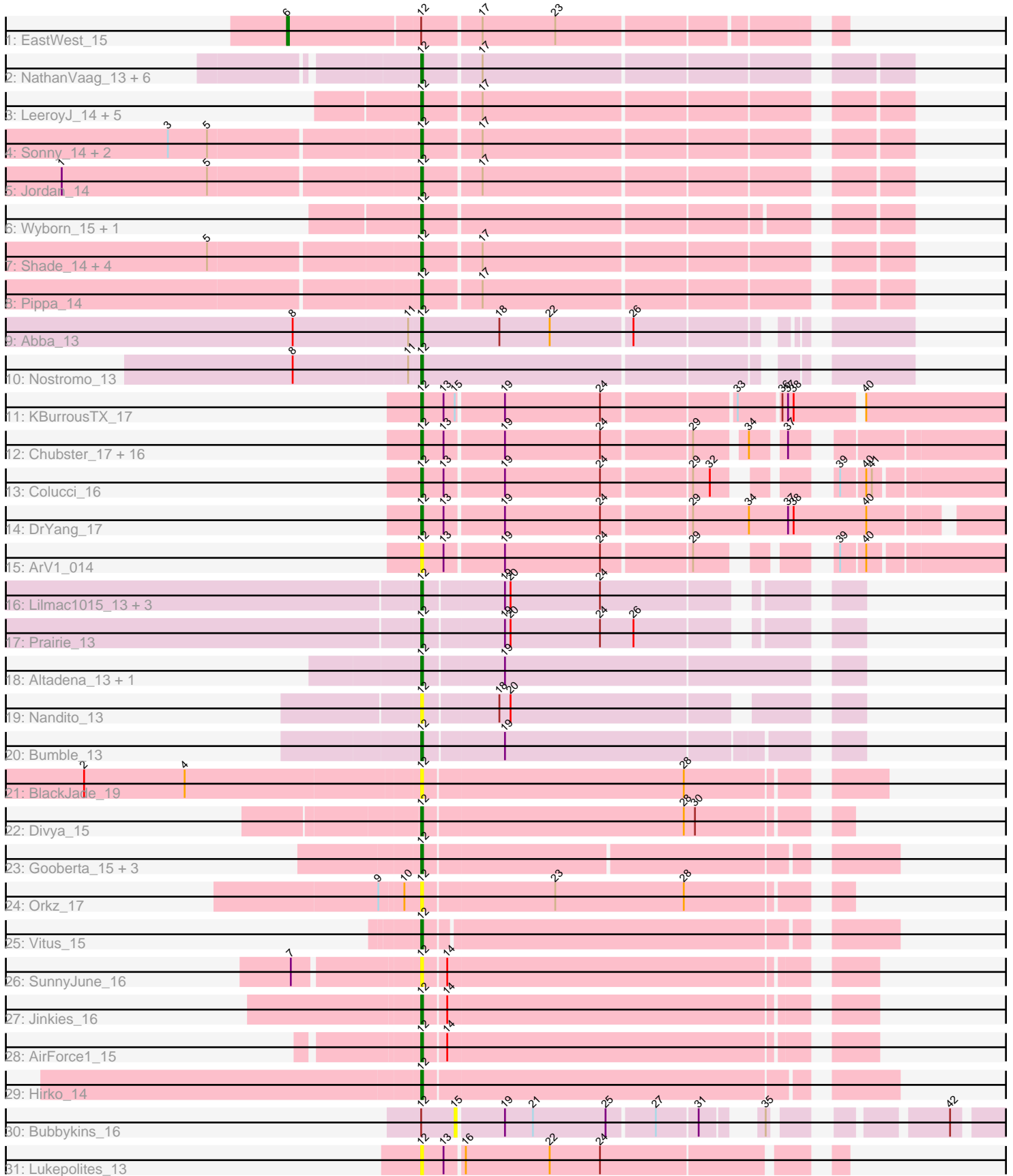


Pham 308540



Note: Tracks are now grouped by subcluster and scaled. Switching in subcluster is indicated by changes in track color. Track scale is now set by default to display the region 30 bp upstream of start 1 to 30 bp downstream of the last possible start. If this default region is judged to be packed too tightly with annotated starts, the track will be further scaled to only show that region of the ORF with annotated starts. This action will be indicated by adding "Zoomed" to the title. For starts, yellow indicates the location of called starts comprised solely of Glimmer/GeneMark auto-annotations, green indicates the location of called starts with at least 1 manual gene annotation.

Pham 308540 Report

This analysis was run 06/27/26 on database version 652.

Pham number 308540 has 72 members, 11 are drafts.

Phages represented in each track:

- Track 1 : EastWest_15
- Track 2 : NathanVaag_13, Franzy_13, Jawnski_13, Brent_13, Piccoletto_13, Beans_13, King2_13
- Track 3 : LeeroyJ_14, Timinator_14, StevieBAY_14, BigDome_14, GravityBall_14, BarretLemon_14
- Track 4 : Sonny_14, Zartrosa_14, JKerns_14
- Track 5 : Jordan_14
- Track 6 : Wyborn_15, Sicarius2_15
- Track 7 : Shade_14, BossLady_14, Martha_14, TaeYoung_14, Grekaycon_14
- Track 8 : Pippa_14
- Track 9 : Abba_13
- Track 10 : Nostromo_13
- Track 11 : KBurrousTX_17
- Track 12 : Chubster_17, Lymara_17, JaNo_17, RosiePosie_17, Chipper1996_170, EdgarPoe_17, Linus_17, Tophat_17, HumptyDumpty_17, Mordred_17, JayCookie_17, MoyaNatalis_17, Chocolat_17, Kabreeze_17, Conboy_17, Scavito_17, PrincessTrina_17
- Track 13 : Colucci_16
- Track 14 : DrYang_17
- Track 15 : ArV1_014
- Track 16 : Lilmac1015_13, Klevey_13, Bolt007_13, CalWood4100_13
- Track 17 : Prairie_13
- Track 18 : Altadena_13, Circuit_13
- Track 19 : Nandito_13
- Track 20 : Bumble_13
- Track 21 : BlackJade_19
- Track 22 : Divya_15
- Track 23 : Gooberta_15, Music_15, GoldDust_15, Vibaki_15
- Track 24 : Orkz_17
- Track 25 : Vitus_15
- Track 26 : SunnyJune_16
- Track 27 : Jinkies_16
- Track 28 : AirForce1_15
- Track 29 : Hirko_14
- Track 30 : Bubbykins_16
- Track 31 : Lukepolites_13

Summary of Final Annotations (See graph section above for start numbers):

The start number called the most often in the published annotations is 12, it was called in 60 of the 61 non-draft genes in the pham.

Genes that call this "Most Annotated" start:

- Abba_13, AirForce1_15, Altadena_13, ArV1_014, BarretLemon_14, Beans_13, BigDome_14, BlackJade_19, Bolt007_13, BossLady_14, Brent_13, Bumble_13, CalWood4100_13, Chipper1996_170, Chocolat_17, Chubster_17, Circuit_13, Colucci_16, Conboy_17, Divya_15, DrYang_17, EdgarPoe_17, Franzy_13, GoldDust_15, Gooberta_15, GravityBall_14, Grekaycon_14, Hirko_14, HumptyDumpty_17, JKerns_14, JaNo_17, Jawnski_13, JayCookie_17, Jinkies_16, Jordan_14, KBurrousTX_17, Kabreeze_17, King2_13, Klevey_13, LeeroyJ_14, Lilmac1015_13, Linus_17, Lukepolites_13, Lymara_17, Martha_14, Mordred_17, MoyaNatalis_17, Music_15, Nandito_13, NathanVaag_13, Nostromo_13, Orkz_17, Piccoletto_13, Pippa_14, Prairie_13, PrincessTrina_17, RosiePosie_17, Scavito_17, Shade_14, Sicarius2_15, Sonny_14, StevieBAY_14, SunnyJune_16, TaeYoung_14, Timinator_14, Tophat_17, Vibaki_15, Vitus_15, Wyborn_15, Zartrosa_14,

Genes that have the "Most Annotated" start but do not call it:

- Bubbykins_16, EastWest_15,

Genes that do not have the "Most Annotated" start:

-

Summary by start number:

Start 6:

- Found in 1 of 72 (1.4%) of genes in pham
- Manual Annotations of this start: 1 of 61
- Called 100.0% of time when present
- Phage (with cluster) where this start called: EastWest_15 (AO),

Start 12:

- Found in 72 of 72 (100.0%) of genes in pham
- Manual Annotations of this start: 60 of 61
- Called 97.2% of time when present
- Phage (with cluster) where this start called: Abba_13 (AO3), AirForce1_15 (FL), Altadena_13 (FH), ArV1_014 (AR), BarretLemon_14 (AO2), Beans_13 (AO1), BigDome_14 (AO2), BlackJade_19 (FL), Bolt007_13 (FH), BossLady_14 (AO2), Brent_13 (AO1), Bumble_13 (FH), CalWood4100_13 (FH), Chipper1996_170 (AR), Chocolat_17 (AR), Chubster_17 (AR), Circuit_13 (FH), Colucci_16 (AR), Conboy_17 (AR), Divya_15 (FL), DrYang_17 (AR), EdgarPoe_17 (AR), Franzy_13 (AO1), GoldDust_15 (FL), Gooberta_15 (FL), GravityBall_14 (AO2), Grekaycon_14 (AO2), Hirko_14 (FL), HumptyDumpty_17 (AR), JKerns_14 (AO2), JaNo_17 (AR), Jawnski_13 (AO1), JayCookie_17 (AR), Jinkies_16 (FL), Jordan_14 (AO2), KBurrousTX_17 (AR), Kabreeze_17 (AR), King2_13 (AO1), Klevey_13 (FH), LeeroyJ_14 (AO2), Lilmac1015_13 (FH), Linus_17 (AR), Lukepolites_13 (singleton), Lymara_17 (AR), Martha_14 (AO2), Mordred_17 (AR), MoyaNatalis_17 (AR), Music_15 (FL), Nandito_13 (FH), NathanVaag_13 (AO1), Nostromo_13 (AO3),

Orkz_17 (FL), Piccoletto_13 (AO1), Pippa_14 (AO2), Prairie_13 (FH), PrincessTrina_17 (AR), RosiePosie_17 (AR), Scavito_17 (AR), Shade_14 (AO2), Sicarius2_15 (AO2), Sonny_14 (AO2), StevieBAY_14 (AO2), SunnyJune_16 (FL), TaeYoung_14 (AO2), Timinator_14 (AO2), Tophat_17 (AR), Vibaki_15 (FL), Vitus_15 (FL), Wyborn_15 (AO2), Zartrosa_14 (AO2),

Start 15:

- Found in 2 of 72 (2.8%) of genes in pham
- No Manual Annotations of this start.
- Called 50.0% of time when present
- Phage (with cluster) where this start called: Bubbykins_16 (UNK),

Summary by clusters:

There are 9 clusters represented in this pham: singleton, AO, AR, AO3, AO2, AO1, FH, UNK, FL,

Info for manual annotations of cluster AO:

- Start number 6 was manually annotated 1 time for cluster AO.

Info for manual annotations of cluster AO1:

- Start number 12 was manually annotated 7 times for cluster AO1.

Info for manual annotations of cluster AO2:

- Start number 12 was manually annotated 17 times for cluster AO2.

Info for manual annotations of cluster AO3:

- Start number 12 was manually annotated 2 times for cluster AO3.

Info for manual annotations of cluster AR:

- Start number 12 was manually annotated 19 times for cluster AR.

Info for manual annotations of cluster FH:

- Start number 12 was manually annotated 7 times for cluster FH.

Info for manual annotations of cluster FL:

- Start number 12 was manually annotated 8 times for cluster FL.

Gene Information:

Gene: Abba_13 Start: 10446, Stop: 10676, Start Num: 12

Candidate Starts for Abba_13:

(8, 10380), (11, 10440), (Start: 12 @10446 has 60 MA's), (18, 10488), (22, 10515), (26, 10557),

Gene: AirForce1_15 Start: 10338, Stop: 10562, Start Num: 12

Candidate Starts for AirForce1_15:

(Start: 12 @10338 has 60 MA's), (14, 10350),

Gene: Altadena_13 Start: 10131, Stop: 10352, Start Num: 12

Candidate Starts for Altadena_13:

(Start: 12 @10131 has 60 MA's), (19, 10173),

Gene: ArV1_014 Start: 10967, Stop: 11242, Start Num: 12

Candidate Starts for ArV1_014:

(Start: 12 @10967 has 60 MA's), (13, 10979), (19, 11009), (24, 11060), (29, 11105), (39, 11153), (40, 11165),

Gene: BarretLemon_14 Start: 10650, Stop: 10889, Start Num: 12

Candidate Starts for BarretLemon_14:

(Start: 12 @10650 has 60 MA's), (17, 10680),

Gene: Beans_13 Start: 10336, Stop: 10575, Start Num: 12

Candidate Starts for Beans_13:

(Start: 12 @10336 has 60 MA's), (17, 10366),

Gene: BigDome_14 Start: 10638, Stop: 10877, Start Num: 12

Candidate Starts for BigDome_14:

(Start: 12 @10638 has 60 MA's), (17, 10668),

Gene: BlackJade_19 Start: 12286, Stop: 12516, Start Num: 12

Candidate Starts for BlackJade_19:

(2, 12109), (4, 12163), (Start: 12 @12286 has 60 MA's), (28, 12424),

Gene: Bolt007_13 Start: 10029, Stop: 10229, Start Num: 12

Candidate Starts for Bolt007_13:

(Start: 12 @10029 has 60 MA's), (19, 10071), (20, 10074), (24, 10122),

Gene: BossLady_14 Start: 10652, Stop: 10891, Start Num: 12

Candidate Starts for BossLady_14:

(5, 10544), (Start: 12 @10652 has 60 MA's), (17, 10682),

Gene: Brent_13 Start: 10318, Stop: 10557, Start Num: 12

Candidate Starts for Brent_13:

(Start: 12 @10318 has 60 MA's), (17, 10348),

Gene: Bubbykins_16 Start: 12202, Stop: 12444, Start Num: 15

Candidate Starts for Bubbykins_16:

(Start: 12 @12184 has 60 MA's), (15, 12202), (19, 12226), (21, 12241), (25, 12280), (27, 12304), (31, 12325), (35, 12343), (42, 12412),

Gene: Bumble_13 Start: 10130, Stop: 10345, Start Num: 12

Candidate Starts for Bumble_13:

(Start: 12 @10130 has 60 MA's), (19, 10172),

Gene: CalWood4100_13 Start: 10012, Stop: 10218, Start Num: 12

Candidate Starts for CalWood4100_13:

(Start: 12 @10012 has 60 MA's), (19, 10054), (20, 10057), (24, 10105),

Gene: Chipper1996_170 Start: 12616, Stop: 12897, Start Num: 12

Candidate Starts for Chipper1996_170:

(Start: 12 @12616 has 60 MA's), (13, 12628), (19, 12658), (24, 12709), (29, 12754), (34, 12778), (37, 12793),

Gene: Chocolat_17 Start: 12617, Stop: 12898, Start Num: 12

Candidate Starts for Chocolat_17:

(Start: 12 @12617 has 60 MA's), (13, 12629), (19, 12659), (24, 12710), (29, 12755), (34, 12779), (37, 12794),

Gene: Chubster_17 Start: 12387, Stop: 12668, Start Num: 12

Candidate Starts for Chubster_17:

(Start: 12 @12387 has 60 MA's), (13, 12399), (19, 12429), (24, 12480), (29, 12525), (34, 12549), (37, 12564),

Gene: Circuit_13 Start: 10115, Stop: 10333, Start Num: 12

Candidate Starts for Circuit_13:

(Start: 12 @10115 has 60 MA's), (19, 10157),

Gene: Colucci_16 Start: 12118, Stop: 12393, Start Num: 12

Candidate Starts for Colucci_16:

(Start: 12 @12118 has 60 MA's), (13, 12130), (19, 12160), (24, 12211), (29, 12256), (32, 12265), (39, 12304), (40, 12316), (41, 12319),

Gene: Conboy_17 Start: 12615, Stop: 12896, Start Num: 12

Candidate Starts for Conboy_17:

(Start: 12 @12615 has 60 MA's), (13, 12627), (19, 12657), (24, 12708), (29, 12753), (34, 12777), (37, 12792),

Gene: Divya_15 Start: 10634, Stop: 10846, Start Num: 12

Candidate Starts for Divya_15:

(Start: 12 @10634 has 60 MA's), (28, 10772), (30, 10778),

Gene: DrYang_17 Start: 12571, Stop: 12864, Start Num: 12

Candidate Starts for DrYang_17:

(Start: 12 @12571 has 60 MA's), (13, 12583), (19, 12613), (24, 12664), (29, 12709), (34, 12739), (37, 12760), (38, 12763), (40, 12802),

Gene: EastWest_15 Start: 10619, Stop: 10891, Start Num: 6

Candidate Starts for EastWest_15:

(Start: 6 @10619 has 1 MA's), (Start: 12 @10688 has 60 MA's), (17, 10718), (23, 10757),

Gene: EdgarPoe_17 Start: 12615, Stop: 12896, Start Num: 12

Candidate Starts for EdgarPoe_17:

(Start: 12 @12615 has 60 MA's), (13, 12627), (19, 12657), (24, 12708), (29, 12753), (34, 12777), (37, 12792),

Gene: Franzy_13 Start: 10318, Stop: 10557, Start Num: 12

Candidate Starts for Franzy_13:

(Start: 12 @10318 has 60 MA's), (17, 10348),

Gene: GoldDust_15 Start: 12216, Stop: 12449, Start Num: 12

Candidate Starts for GoldDust_15:

(Start: 12 @12216 has 60 MA's),

Gene: Gooberta_15 Start: 12216, Stop: 12449, Start Num: 12

Candidate Starts for Gooberta_15:

(Start: 12 @12216 has 60 MA's),

Gene: GravityBall_14 Start: 10649, Stop: 10888, Start Num: 12
Candidate Starts for GravityBall_14:
(Start: 12 @10649 has 60 MA's), (17, 10679),

Gene: Grekaycon_14 Start: 10661, Stop: 10900, Start Num: 12
Candidate Starts for Grekaycon_14:
(5, 10553), (Start: 12 @10661 has 60 MA's), (17, 10691),

Gene: Hirko_14 Start: 11651, Stop: 11887, Start Num: 12
Candidate Starts for Hirko_14:
(Start: 12 @11651 has 60 MA's),

Gene: HumptyDumpty_17 Start: 12614, Stop: 12895, Start Num: 12
Candidate Starts for HumptyDumpty_17:
(Start: 12 @12614 has 60 MA's), (13, 12626), (19, 12656), (24, 12707), (29, 12752), (34, 12776), (37, 12791),

Gene: JKerns_14 Start: 10688, Stop: 10927, Start Num: 12
Candidate Starts for JKerns_14:
(3, 10559), (5, 10580), (Start: 12 @10688 has 60 MA's), (17, 10718),

Gene: JaNo_17 Start: 12614, Stop: 12895, Start Num: 12
Candidate Starts for JaNo_17:
(Start: 12 @12614 has 60 MA's), (13, 12626), (19, 12656), (24, 12707), (29, 12752), (34, 12776), (37, 12791),

Gene: Jawnski_13 Start: 10331, Stop: 10570, Start Num: 12
Candidate Starts for Jawnski_13:
(Start: 12 @10331 has 60 MA's), (17, 10361),

Gene: JayCookie_17 Start: 12617, Stop: 12898, Start Num: 12
Candidate Starts for JayCookie_17:
(Start: 12 @12617 has 60 MA's), (13, 12629), (19, 12659), (24, 12710), (29, 12755), (34, 12779), (37, 12794),

Gene: Jinkies_16 Start: 12256, Stop: 12480, Start Num: 12
Candidate Starts for Jinkies_16:
(Start: 12 @12256 has 60 MA's), (14, 12268),

Gene: Jordan_14 Start: 10658, Stop: 10897, Start Num: 12
Candidate Starts for Jordan_14:
(1, 10472), (5, 10550), (Start: 12 @10658 has 60 MA's), (17, 10688),

Gene: KBurrousTX_17 Start: 12394, Stop: 12696, Start Num: 12
Candidate Starts for KBurrousTX_17:
(Start: 12 @12394 has 60 MA's), (13, 12406), (15, 12412), (19, 12436), (24, 12487), (33, 12553), (36, 12574), (37, 12577), (38, 12580), (40, 12613),

Gene: Kabreeze_17 Start: 12614, Stop: 12895, Start Num: 12
Candidate Starts for Kabreeze_17:
(Start: 12 @12614 has 60 MA's), (13, 12626), (19, 12656), (24, 12707), (29, 12752), (34, 12776), (37, 12791),

Gene: King2_13 Start: 10320, Stop: 10559, Start Num: 12

Candidate Starts for King2_13:

(Start: 12 @10320 has 60 MA's), (17, 10350),

Gene: Klevey_13 Start: 10022, Stop: 10228, Start Num: 12

Candidate Starts for Klevey_13:

(Start: 12 @10022 has 60 MA's), (19, 10064), (20, 10067), (24, 10115),

Gene: LeeroyJ_14 Start: 10649, Stop: 10888, Start Num: 12

Candidate Starts for LeeroyJ_14:

(Start: 12 @10649 has 60 MA's), (17, 10679),

Gene: Lilmac1015_13 Start: 10012, Stop: 10218, Start Num: 12

Candidate Starts for Lilmac1015_13:

(Start: 12 @10012 has 60 MA's), (19, 10054), (20, 10057), (24, 10105),

Gene: Linus_17 Start: 12614, Stop: 12895, Start Num: 12

Candidate Starts for Linus_17:

(Start: 12 @12614 has 60 MA's), (13, 12626), (19, 12656), (24, 12707), (29, 12752), (34, 12776), (37, 12791),

Gene: Lukepolites_13 Start: 10365, Stop: 10571, Start Num: 12

Candidate Starts for Lukepolites_13:

(Start: 12 @10365 has 60 MA's), (13, 10377), (16, 10386), (22, 10431), (24, 10458),

Gene: Lymara_17 Start: 12616, Stop: 12897, Start Num: 12

Candidate Starts for Lymara_17:

(Start: 12 @12616 has 60 MA's), (13, 12628), (19, 12658), (24, 12709), (29, 12754), (34, 12778), (37, 12793),

Gene: Martha_14 Start: 10599, Stop: 10838, Start Num: 12

Candidate Starts for Martha_14:

(5, 10491), (Start: 12 @10599 has 60 MA's), (17, 10629),

Gene: Mordred_17 Start: 12614, Stop: 12895, Start Num: 12

Candidate Starts for Mordred_17:

(Start: 12 @12614 has 60 MA's), (13, 12626), (19, 12656), (24, 12707), (29, 12752), (34, 12776), (37, 12791),

Gene: MoyaNatalis_17 Start: 12617, Stop: 12898, Start Num: 12

Candidate Starts for MoyaNatalis_17:

(Start: 12 @12617 has 60 MA's), (13, 12629), (19, 12659), (24, 12710), (29, 12755), (34, 12779), (37, 12794),

Gene: Music_15 Start: 12086, Stop: 12319, Start Num: 12

Candidate Starts for Music_15:

(Start: 12 @12086 has 60 MA's),

Gene: Nandito_13 Start: 10109, Stop: 10318, Start Num: 12

Candidate Starts for Nandito_13:

(Start: 12 @10109 has 60 MA's), (18, 10148), (20, 10154),

Gene: NathanVaag_13 Start: 10324, Stop: 10563, Start Num: 12
Candidate Starts for NathanVaag_13:
(Start: 12 @10324 has 60 MA's), (17, 10354),

Gene: Nostromo_13 Start: 10650, Stop: 10883, Start Num: 12
Candidate Starts for Nostromo_13:
(8, 10584), (11, 10644), (Start: 12 @10650 has 60 MA's),

Gene: Orkz_17 Start: 10714, Stop: 10926, Start Num: 12
Candidate Starts for Orkz_17:
(9, 10693), (10, 10705), (Start: 12 @10714 has 60 MA's), (23, 10783), (28, 10852),

Gene: Piccoletto_13 Start: 10325, Stop: 10564, Start Num: 12
Candidate Starts for Piccoletto_13:
(Start: 12 @10325 has 60 MA's), (17, 10355),

Gene: Pippa_14 Start: 10697, Stop: 10936, Start Num: 12
Candidate Starts for Pippa_14:
(Start: 12 @10697 has 60 MA's), (17, 10727),

Gene: Prairie_13 Start: 10019, Stop: 10225, Start Num: 12
Candidate Starts for Prairie_13:
(Start: 12 @10019 has 60 MA's), (19, 10061), (20, 10064), (24, 10112), (26, 10130),

Gene: PrincessTrina_17 Start: 12617, Stop: 12898, Start Num: 12
Candidate Starts for PrincessTrina_17:
(Start: 12 @12617 has 60 MA's), (13, 12629), (19, 12659), (24, 12710), (29, 12755), (34, 12779), (37, 12794),

Gene: RosiePosie_17 Start: 12617, Stop: 12898, Start Num: 12
Candidate Starts for RosiePosie_17:
(Start: 12 @12617 has 60 MA's), (13, 12629), (19, 12659), (24, 12710), (29, 12755), (34, 12779), (37, 12794),

Gene: Scavito_17 Start: 12614, Stop: 12895, Start Num: 12
Candidate Starts for Scavito_17:
(Start: 12 @12614 has 60 MA's), (13, 12626), (19, 12656), (24, 12707), (29, 12752), (34, 12776), (37, 12791),

Gene: Shade_14 Start: 10637, Stop: 10876, Start Num: 12
Candidate Starts for Shade_14:
(5, 10529), (Start: 12 @10637 has 60 MA's), (17, 10667),

Gene: Sicarius2_15 Start: 11144, Stop: 11380, Start Num: 12
Candidate Starts for Sicarius2_15:
(Start: 12 @11144 has 60 MA's),

Gene: Sonny_14 Start: 10658, Stop: 10897, Start Num: 12
Candidate Starts for Sonny_14:
(3, 10529), (5, 10550), (Start: 12 @10658 has 60 MA's), (17, 10688),

Gene: StevieBAY_14 Start: 10649, Stop: 10888, Start Num: 12
Candidate Starts for StevieBAY_14:

(Start: 12 @10649 has 60 MA's), (17, 10679),

Gene: SunnyJune_16 Start: 12120, Stop: 12344, Start Num: 12

Candidate Starts for SunnyJune_16:

(7, 12057), (Start: 12 @12120 has 60 MA's), (14, 12132),

Gene: TaeYoung_14 Start: 10662, Stop: 10901, Start Num: 12

Candidate Starts for TaeYoung_14:

(5, 10554), (Start: 12 @10662 has 60 MA's), (17, 10692),

Gene: Timinator_14 Start: 10649, Stop: 10888, Start Num: 12

Candidate Starts for Timinator_14:

(Start: 12 @10649 has 60 MA's), (17, 10679),

Gene: Tophat_17 Start: 12616, Stop: 12897, Start Num: 12

Candidate Starts for Tophat_17:

(Start: 12 @12616 has 60 MA's), (13, 12628), (19, 12658), (24, 12709), (29, 12754), (34, 12778), (37, 12793),

Gene: Vibaki_15 Start: 12095, Stop: 12331, Start Num: 12

Candidate Starts for Vibaki_15:

(Start: 12 @12095 has 60 MA's),

Gene: Vitus_15 Start: 11899, Stop: 12132, Start Num: 12

Candidate Starts for Vitus_15:

(Start: 12 @11899 has 60 MA's),

Gene: Wyborn_15 Start: 11005, Stop: 11241, Start Num: 12

Candidate Starts for Wyborn_15:

(Start: 12 @11005 has 60 MA's),

Gene: Zartrosa_14 Start: 10661, Stop: 10900, Start Num: 12

Candidate Starts for Zartrosa_14:

(3, 10532), (5, 10553), (Start: 12 @10661 has 60 MA's), (17, 10691),