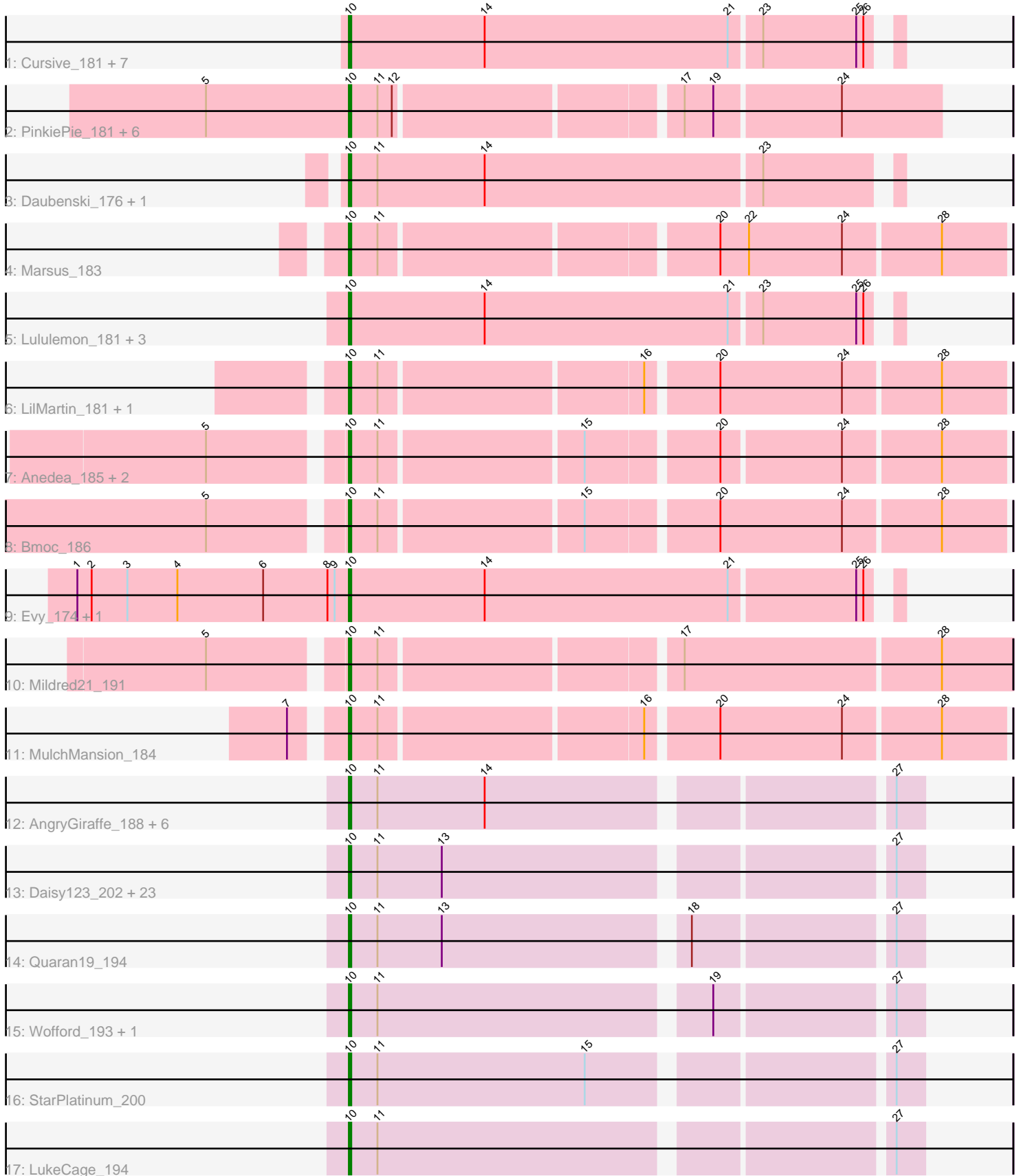


Pham 308568



Note: Tracks are now grouped by subcluster and scaled. Switching in subcluster is indicated by changes in track color. Track scale is now set by default to display the region 30 bp upstream of start 1 to 30 bp downstream of the last possible start. If this default region is judged to be packed too tightly with annotated starts, the track will be further scaled to only show that region of the ORF with annotated starts. This action will be indicated by adding "Zoomed" to the title. For starts, yellow indicates the location of called starts comprised solely of Glimmer/GeneMark auto-annotations, green indicates the location of called starts with at least 1 manual gene annotation.

Pham 308568 Report

This analysis was run 06/27/26 on database version 652.

Pham number 308568 has 68 members, 5 are drafts.

Phages represented in each track:

- Track 1 : Cursive_181, Samisti12_185, Pepperwood_182, Leo04_184, Tribute_180, Scheme_186, Sushi23_183, Peebs_180
- Track 2 : PinkiePie_181, FreddyDRoo_184, Liandry_181, Bartholomune_181, Eliot67_182, Squillium_184, Shuckle_180
- Track 3 : Daubenski_176, Cadmus_177
- Track 4 : Marsus_183
- Track 5 : Lululemon_181, PacManQ_181, Cross_182, Coogler_181
- Track 6 : LilMartin_181, Angela_183
- Track 7 : Anedea_185, LilSaint_178, Riptide_178
- Track 8 : Bmoc_186
- Track 9 : Evy_174, Targaryen_182
- Track 10 : Mildred21_191
- Track 11 : MulchMansion_184
- Track 12 : AngryGiraffe_188, Enygma_199, Genie2_189, Sollertia_190, Yaboi_193, BoomerJR_189, Stanimal_189
- Track 13 : Daisy123_202, Gibbi_202, Battuta_192, JimJam_201, Spelly_197, Amabiko_198, PumpkinSpice_196, Mugiwara_196, IchabodCrane_190, Karimac_194, CeilingFan_198, Rikishi_194, AcciDwight_202, TomSawyer_199, Wipeout_186, Jollison_191, Bordeaux_193, Brizzy_194, SaltySpittoon_193, Birchlyn_193, Spilled_200, MindFlayer_187, KentuckyRacer_200, Starbow_192
- Track 14 : Quarant19_194
- Track 15 : Wofford_193, Elmer_200
- Track 16 : StarPlatinum_200
- Track 17 : LukeCage_194

Summary of Final Annotations (See graph section above for start numbers):

The start number called the most often in the published annotations is 10, it was called in 63 of the 63 non-draft genes in the pham.

Genes that call this "Most Annotated" start:

- AcciDwight_202, Amabiko_198, Anedea_185, Angela_183, AngryGiraffe_188, Bartholomune_181, Battuta_192, Birchlyn_193, Bmoc_186, BoomerJR_189, Bordeaux_193, Brizzy_194, Cadmus_177, CeilingFan_198, Coogler_181, Cross_182,

Cursive_181, Daisy123_202, Daubenski_176, Eliot67_182, Elmer_200, Enygma_199, Evy_174, FreddyDRoo_184, Genie2_189, Gibbi_202, IchabodCrane_190, JimJam_201, Jollison_191, Karimac_194, KentuckyRacer_200, Leo04_184, Liandry_181, LilMartin_181, LilSaint_178, LukeCage_194, Lululemon_181, Marsus_183, Mildred21_191, MindFlayer_187, Mugiwara_196, MulchMansion_184, PacManQ_181, Peebs_180, Pepperwood_182, PinkiePie_181, PumpkinSpice_196, Quaran19_194, Rikishi_194, Riptide_178, SaltySpittoon_193, Samisti12_185, Scheme_186, Shuckle_180, Sollertia_190, Spelly_197, Spilled_200, Squillium_184, Stanimal_189, StarPlatinum_200, Starbow_192, Sushi23_183, Targaryen_182, TomSawyer_199, Tribute_180, Wipeout_186, Wofford_193, Yaboi_193,

Genes that have the "Most Annotated" start but do not call it:

-

Genes that do not have the "Most Annotated" start:

-

Summary by start number:

Start 10:

- Found in 68 of 68 (100.0%) of genes in pham
- Manual Annotations of this start: 63 of 63
- Called 100.0% of time when present
- Phage (with cluster) where this start called: Accidwight_202 (BE2), Amabiko_198 (BE2), Anedea_185 (BE1), Angela_183 (BE1), AngryGiraffe_188 (BE2), Bartholomune_181 (BE1), Battuta_192 (BE2), Birchlyn_193 (BE2), Bmoc_186 (BE1), BoomerJR_189 (BE2), Bordeaux_193 (BE2), Brizzy_194 (BE2), Cadmus_177 (BE1), CeilingFan_198 (BE2), Coogler_181 (BE1), Cross_182 (BE1), Cursive_181 (BE1), Daisy123_202 (BE2), Daubenski_176 (BE1), Eliot67_182 (BE1), Elmer_200 (BE2), Enygma_199 (BE2), Evy_174 (BE1), FreddyDRoo_184 (BE1), Genie2_189 (BE2), Gibbi_202 (BE2), IchabodCrane_190 (BE2), JimJam_201 (BE2), Jollison_191 (BE2), Karimac_194 (BE2), KentuckyRacer_200 (BE2), Leo04_184 (BE1), Liandry_181 (BE1), LilMartin_181 (BE1), LilSaint_178 (BE1), LukeCage_194 (BE2), Lululemon_181 (BE1), Marsus_183 (BE1), Mildred21_191 (BE1), MindFlayer_187 (BE2), Mugiwara_196 (BE2), MulchMansion_184 (BE1), PacManQ_181 (BE1), Peebs_180 (BE1), Pepperwood_182 (BE1), PinkiePie_181 (BE1), PumpkinSpice_196 (BE2), Quaran19_194 (BE2), Rikishi_194 (BE2), Riptide_178 (BE1), SaltySpittoon_193 (BE2), Samisti12_185 (BE1), Scheme_186 (BE1), Shuckle_180 (BE1), Sollertia_190 (BE2), Spelly_197 (BE2), Spilled_200 (BE2), Squillium_184 (BE1), Stanimal_189 (BE2), StarPlatinum_200 (BE2), Starbow_192 (BE2), Sushi23_183 (BE1), Targaryen_182 (BE1), TomSawyer_199 (BE2), Tribute_180 (BE1), Wipeout_186 (BE2), Wofford_193 (BE2), Yaboi_193 (BE2),

Summary by clusters:

There are 2 clusters represented in this pham: BE2, BE1,

Info for manual annotations of cluster BE1:

- Start number 10 was manually annotated 30 times for cluster BE1.

Info for manual annotations of cluster BE2:

- Start number 10 was manually annotated 33 times for cluster BE2.

Gene Information:

Gene: AcciDwight_202 Start: 98523, Stop: 98747, Start Num: 10

Candidate Starts for AcciDwight_202:

(Start: 10 @98523 has 63 MA's), (11, 98535), (13, 98562), (27, 98736),

Gene: Amabiko_198 Start: 98341, Stop: 98565, Start Num: 10

Candidate Starts for Amabiko_198:

(Start: 10 @98341 has 63 MA's), (11, 98353), (13, 98380), (27, 98554),

Gene: Anedea_185 Start: 96500, Stop: 96757, Start Num: 10

Candidate Starts for Anedea_185:

(5, 96449), (Start: 10 @96500 has 63 MA's), (11, 96512), (15, 96593), (20, 96644), (24, 96692), (28, 96731),

Gene: Angela_183 Start: 96479, Stop: 96739, Start Num: 10

Candidate Starts for Angela_183:

(Start: 10 @96479 has 63 MA's), (11, 96491), (16, 96596), (20, 96623), (24, 96674), (28, 96713),

Gene: AngryGiraffe_188 Start: 97200, Stop: 97424, Start Num: 10

Candidate Starts for AngryGiraffe_188:

(Start: 10 @97200 has 63 MA's), (11, 97212), (14, 97257), (27, 97413),

Gene: Bartholomune_181 Start: 96007, Stop: 96240, Start Num: 10

Candidate Starts for Bartholomune_181:

(5, 95947), (Start: 10 @96007 has 63 MA's), (11, 96019), (12, 96025), (17, 96136), (19, 96148), (24, 96199),

Gene: Battuta_192 Start: 97657, Stop: 97881, Start Num: 10

Candidate Starts for Battuta_192:

(Start: 10 @97657 has 63 MA's), (11, 97669), (13, 97696), (27, 97870),

Gene: Birchlyn_193 Start: 95589, Stop: 95813, Start Num: 10

Candidate Starts for Birchlyn_193:

(Start: 10 @95589 has 63 MA's), (11, 95601), (13, 95628), (27, 95802),

Gene: Bmoc_186 Start: 97251, Stop: 97511, Start Num: 10

Candidate Starts for Bmoc_186:

(5, 97200), (Start: 10 @97251 has 63 MA's), (11, 97263), (15, 97344), (20, 97395), (24, 97446), (28, 97485),

Gene: BoomerJR_189 Start: 97633, Stop: 97857, Start Num: 10

Candidate Starts for BoomerJR_189:

(Start: 10 @97633 has 63 MA's), (11, 97645), (14, 97690), (27, 97846),

Gene: Bordeaux_193 Start: 98240, Stop: 98464, Start Num: 10

Candidate Starts for Bordeaux_193:

(Start: 10 @98240 has 63 MA's), (11, 98252), (13, 98279), (27, 98453),

Gene: Brizzy_194 Start: 98785, Stop: 99009, Start Num: 10

Candidate Starts for Brizzy_194:

(Start: 10 @98785 has 63 MA's), (11, 98797), (13, 98824), (27, 98998),

Gene: Cadmus_177 Start: 96509, Stop: 96730, Start Num: 10

Candidate Starts for Cadmus_177:

(Start: 10 @96509 has 63 MA's), (11, 96521), (14, 96566), (23, 96680),

Gene: CeilingFan_198 Start: 99034, Stop: 99258, Start Num: 10

Candidate Starts for CeilingFan_198:

(Start: 10 @99034 has 63 MA's), (11, 99046), (13, 99073), (27, 99247),

Gene: Coogler_181 Start: 97896, Stop: 98117, Start Num: 10

Candidate Starts for Coogler_181:

(Start: 10 @97896 has 63 MA's), (14, 97953), (21, 98055), (23, 98067), (25, 98106), (26, 98109),

Gene: Cross_182 Start: 97872, Stop: 98093, Start Num: 10

Candidate Starts for Cross_182:

(Start: 10 @97872 has 63 MA's), (14, 97929), (21, 98031), (23, 98043), (25, 98082), (26, 98085),

Gene: Cursive_181 Start: 96082, Stop: 96303, Start Num: 10

Candidate Starts for Cursive_181:

(Start: 10 @96082 has 63 MA's), (14, 96139), (21, 96241), (23, 96253), (25, 96292), (26, 96295),

Gene: Daisy123_202 Start: 98896, Stop: 99120, Start Num: 10

Candidate Starts for Daisy123_202:

(Start: 10 @98896 has 63 MA's), (11, 98908), (13, 98935), (27, 99109),

Gene: Daubenski_176 Start: 97746, Stop: 97967, Start Num: 10

Candidate Starts for Daubenski_176:

(Start: 10 @97746 has 63 MA's), (11, 97758), (14, 97803), (23, 97917),

Gene: Eliot67_182 Start: 96043, Stop: 96276, Start Num: 10

Candidate Starts for Eliot67_182:

(5, 95983), (Start: 10 @96043 has 63 MA's), (11, 96055), (12, 96061), (17, 96172), (19, 96184), (24, 96235),

Gene: Elmer_200 Start: 101140, Stop: 101364, Start Num: 10

Candidate Starts for Elmer_200:

(Start: 10 @101140 has 63 MA's), (11, 101152), (19, 101284), (27, 101353),

Gene: Enygma_199 Start: 100871, Stop: 101095, Start Num: 10

Candidate Starts for Enygma_199:

(Start: 10 @100871 has 63 MA's), (11, 100883), (14, 100928), (27, 101084),

Gene: Evy_174 Start: 97572, Stop: 97793, Start Num: 10

Candidate Starts for Evy_174:

(1, 97458), (2, 97464), (3, 97479), (4, 97500), (6, 97536), (8, 97563), (9, 97566), (Start: 10 @97572 has 63 MA's), (14, 97629), (21, 97731), (25, 97782), (26, 97785),

Gene: FreddyDRoo_184 Start: 96043, Stop: 96276, Start Num: 10

Candidate Starts for FreddyDRoo_184:

(5, 95983), (Start: 10 @96043 has 63 MA's), (11, 96055), (12, 96061), (17, 96172), (19, 96184), (24, 96235),

Gene: Genie2_189 Start: 97747, Stop: 97971, Start Num: 10
Candidate Starts for Genie2_189:
(Start: 10 @97747 has 63 MA's), (11, 97759), (14, 97804), (27, 97960),

Gene: Gibbi_202 Start: 98527, Stop: 98751, Start Num: 10
Candidate Starts for Gibbi_202:
(Start: 10 @98527 has 63 MA's), (11, 98539), (13, 98566), (27, 98740),

Gene: IchabodCrane_190 Start: 98042, Stop: 98266, Start Num: 10
Candidate Starts for IchabodCrane_190:
(Start: 10 @98042 has 63 MA's), (11, 98054), (13, 98081), (27, 98255),

Gene: JimJam_201 Start: 99963, Stop: 100187, Start Num: 10
Candidate Starts for JimJam_201:
(Start: 10 @99963 has 63 MA's), (11, 99975), (13, 100002), (27, 100176),

Gene: Jollison_191 Start: 98173, Stop: 98400, Start Num: 10
Candidate Starts for Jollison_191:
(Start: 10 @98173 has 63 MA's), (11, 98185), (13, 98212), (27, 98386),

Gene: Karimac_194 Start: 98367, Stop: 98591, Start Num: 10
Candidate Starts for Karimac_194:
(Start: 10 @98367 has 63 MA's), (11, 98379), (13, 98406), (27, 98580),

Gene: KentuckyRacer_200 Start: 99878, Stop: 100102, Start Num: 10
Candidate Starts for KentuckyRacer_200:
(Start: 10 @99878 has 63 MA's), (11, 99890), (13, 99917), (27, 100091),

Gene: Leo04_184 Start: 98238, Stop: 98459, Start Num: 10
Candidate Starts for Leo04_184:
(Start: 10 @98238 has 63 MA's), (14, 98295), (21, 98397), (23, 98409), (25, 98448), (26, 98451),

Gene: Liandry_181 Start: 96750, Stop: 96983, Start Num: 10
Candidate Starts for Liandry_181:
(5, 96690), (Start: 10 @96750 has 63 MA's), (11, 96762), (12, 96768), (17, 96879), (19, 96891), (24, 96942),

Gene: LilMartin_181 Start: 96098, Stop: 96358, Start Num: 10
Candidate Starts for LilMartin_181:
(Start: 10 @96098 has 63 MA's), (11, 96110), (16, 96215), (20, 96242), (24, 96293), (28, 96332),

Gene: LilSaint_178 Start: 95662, Stop: 95919, Start Num: 10
Candidate Starts for LilSaint_178:
(5, 95611), (Start: 10 @95662 has 63 MA's), (11, 95674), (15, 95755), (20, 95806), (24, 95854), (28, 95893),

Gene: LukeCage_194 Start: 99297, Stop: 99521, Start Num: 10
Candidate Starts for LukeCage_194:
(Start: 10 @99297 has 63 MA's), (11, 99309), (27, 99510),

Gene: Lululemon_181 Start: 96608, Stop: 96829, Start Num: 10
Candidate Starts for Lululemon_181:
(Start: 10 @96608 has 63 MA's), (14, 96665), (21, 96767), (23, 96779), (25, 96818), (26, 96821),

Gene: Marsus_183 Start: 97053, Stop: 97313, Start Num: 10
Candidate Starts for Marsus_183:
(Start: 10 @97053 has 63 MA's), (11, 97065), (20, 97197), (22, 97209), (24, 97248), (28, 97287),

Gene: Mildred21_191 Start: 96364, Stop: 96627, Start Num: 10
Candidate Starts for Mildred21_191:
(5, 96313), (Start: 10 @96364 has 63 MA's), (11, 96376), (17, 96493), (28, 96598),

Gene: MindFlayer_187 Start: 97558, Stop: 97782, Start Num: 10
Candidate Starts for MindFlayer_187:
(Start: 10 @97558 has 63 MA's), (11, 97570), (13, 97597), (27, 97771),

Gene: Mugiwara_196 Start: 99700, Stop: 99924, Start Num: 10
Candidate Starts for Mugiwara_196:
(Start: 10 @99700 has 63 MA's), (11, 99712), (13, 99739), (27, 99913),

Gene: MulchMansion_184 Start: 97478, Stop: 97738, Start Num: 10
Candidate Starts for MulchMansion_184:
(7, 97460), (Start: 10 @97478 has 63 MA's), (11, 97490), (16, 97595), (20, 97622), (24, 97673), (28, 97712),

Gene: PacManQ_181 Start: 96608, Stop: 96829, Start Num: 10
Candidate Starts for PacManQ_181:
(Start: 10 @96608 has 63 MA's), (14, 96665), (21, 96767), (23, 96779), (25, 96818), (26, 96821),

Gene: Peebs_180 Start: 97550, Stop: 97771, Start Num: 10
Candidate Starts for Peebs_180:
(Start: 10 @97550 has 63 MA's), (14, 97607), (21, 97709), (23, 97721), (25, 97760), (26, 97763),

Gene: Pepperwood_182 Start: 97508, Stop: 97729, Start Num: 10
Candidate Starts for Pepperwood_182:
(Start: 10 @97508 has 63 MA's), (14, 97565), (21, 97667), (23, 97679), (25, 97718), (26, 97721),

Gene: PinkiePie_181 Start: 96750, Stop: 96983, Start Num: 10
Candidate Starts for PinkiePie_181:
(5, 96690), (Start: 10 @96750 has 63 MA's), (11, 96762), (12, 96768), (17, 96879), (19, 96891), (24, 96942),

Gene: PumpkinSpice_196 Start: 98779, Stop: 99003, Start Num: 10
Candidate Starts for PumpkinSpice_196:
(Start: 10 @98779 has 63 MA's), (11, 98791), (13, 98818), (27, 98992),

Gene: Quaran19_194 Start: 98220, Stop: 98444, Start Num: 10
Candidate Starts for Quaran19_194:
(Start: 10 @98220 has 63 MA's), (11, 98232), (13, 98259), (18, 98355), (27, 98433),

Gene: Rikishi_194 Start: 98501, Stop: 98725, Start Num: 10
Candidate Starts for Rikishi_194:
(Start: 10 @98501 has 63 MA's), (11, 98513), (13, 98540), (27, 98714),

Gene: Riptide_178 Start: 95139, Stop: 95396, Start Num: 10
Candidate Starts for Riptide_178:

(5, 95088), (Start: 10 @95139 has 63 MA's), (11, 95151), (15, 95232), (20, 95283), (24, 95331), (28, 95370),

Gene: SaltySpittoon_193 Start: 97762, Stop: 97986, Start Num: 10

Candidate Starts for SaltySpittoon_193:

(Start: 10 @97762 has 63 MA's), (11, 97774), (13, 97801), (27, 97975),

Gene: Samisti12_185 Start: 98934, Stop: 99155, Start Num: 10

Candidate Starts for Samisti12_185:

(Start: 10 @98934 has 63 MA's), (14, 98991), (21, 99093), (23, 99105), (25, 99144), (26, 99147),

Gene: Scheme_186 Start: 99115, Stop: 99336, Start Num: 10

Candidate Starts for Scheme_186:

(Start: 10 @99115 has 63 MA's), (14, 99172), (21, 99274), (23, 99286), (25, 99325), (26, 99328),

Gene: Shuckle_180 Start: 97599, Stop: 97832, Start Num: 10

Candidate Starts for Shuckle_180:

(5, 97539), (Start: 10 @97599 has 63 MA's), (11, 97611), (12, 97617), (17, 97728), (19, 97740), (24, 97791),

Gene: Sollertia_190 Start: 97747, Stop: 97971, Start Num: 10

Candidate Starts for Sollertia_190:

(Start: 10 @97747 has 63 MA's), (11, 97759), (14, 97804), (27, 97960),

Gene: Spelly_197 Start: 97691, Stop: 97915, Start Num: 10

Candidate Starts for Spelly_197:

(Start: 10 @97691 has 63 MA's), (11, 97703), (13, 97730), (27, 97904),

Gene: Spilled_200 Start: 98895, Stop: 99119, Start Num: 10

Candidate Starts for Spilled_200:

(Start: 10 @98895 has 63 MA's), (11, 98907), (13, 98934), (27, 99108),

Gene: Squillium_184 Start: 96752, Stop: 96985, Start Num: 10

Candidate Starts for Squillium_184:

(5, 96692), (Start: 10 @96752 has 63 MA's), (11, 96764), (12, 96770), (17, 96881), (19, 96893), (24, 96944),

Gene: Stanimal_189 Start: 98108, Stop: 98332, Start Num: 10

Candidate Starts for Stanimal_189:

(Start: 10 @98108 has 63 MA's), (11, 98120), (14, 98165), (27, 98321),

Gene: StarPlatinum_200 Start: 100164, Stop: 100388, Start Num: 10

Candidate Starts for StarPlatinum_200:

(Start: 10 @100164 has 63 MA's), (11, 100176), (15, 100263), (27, 100377),

Gene: Starbow_192 Start: 97735, Stop: 97959, Start Num: 10

Candidate Starts for Starbow_192:

(Start: 10 @97735 has 63 MA's), (11, 97747), (13, 97774), (27, 97948),

Gene: Sushi23_183 Start: 98614, Stop: 98835, Start Num: 10

Candidate Starts for Sushi23_183:

(Start: 10 @98614 has 63 MA's), (14, 98671), (21, 98773), (23, 98785), (25, 98824), (26, 98827),

Gene: Targaryen_182 Start: 98781, Stop: 99002, Start Num: 10
Candidate Starts for Targaryen_182:
(1, 98667), (2, 98673), (3, 98688), (4, 98709), (6, 98745), (8, 98772), (9, 98775), (Start: 10 @98781 has 63 MA's), (14, 98838), (21, 98940), (25, 98991), (26, 98994),

Gene: TomSawyer_199 Start: 100206, Stop: 100430, Start Num: 10
Candidate Starts for TomSawyer_199:
(Start: 10 @100206 has 63 MA's), (11, 100218), (13, 100245), (27, 100419),

Gene: Tribute_180 Start: 98049, Stop: 98270, Start Num: 10
Candidate Starts for Tribute_180:
(Start: 10 @98049 has 63 MA's), (14, 98106), (21, 98208), (23, 98220), (25, 98259), (26, 98262),

Gene: Wipeout_186 Start: 99158, Stop: 99382, Start Num: 10
Candidate Starts for Wipeout_186:
(Start: 10 @99158 has 63 MA's), (11, 99170), (13, 99197), (27, 99371),

Gene: Wofford_193 Start: 101100, Stop: 101324, Start Num: 10
Candidate Starts for Wofford_193:
(Start: 10 @101100 has 63 MA's), (11, 101112), (19, 101244), (27, 101313),

Gene: Yaboi_193 Start: 97682, Stop: 97906, Start Num: 10
Candidate Starts for Yaboi_193:
(Start: 10 @97682 has 63 MA's), (11, 97694), (14, 97739), (27, 97895),