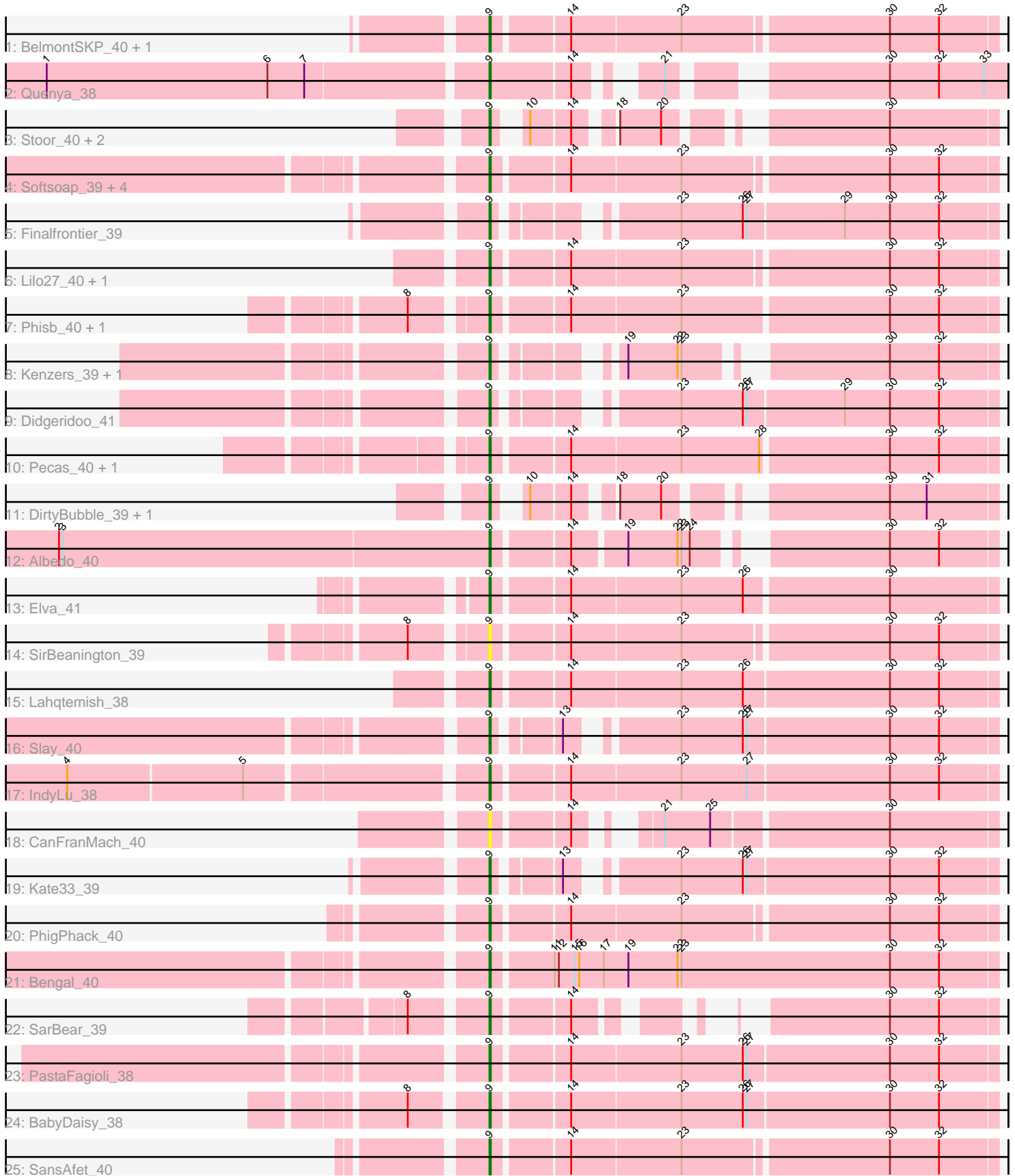


# Pham 308611



Note: Tracks are now grouped by subcluster and scaled. Switching in subcluster is indicated by changes in track color. Track scale is now set by default to display the region 30 bp upstream of start 1 to 30 bp downstream of the last possible start. If this default region is judged to be packed too tightly with annotated starts, the track will be further scaled to only show that region of the ORF with annotated starts. This action will be indicated by adding "Zoomed" to the title. For starts, yellow indicates the location of called starts comprised solely of Glimmer/GeneMark auto-annotations, green indicates the location of called starts with at least 1 manual gene annotation.

## Pham 308611 Report

This analysis was run 06/27/26 on database version 652.

Pham number 308611 has 37 members, 3 are drafts.

Phages represented in each track:

- Track 1 : BelmontSKP\_40, AnnaLie\_40
- Track 2 : Quenya\_38
- Track 3 : Stoor\_40, SanaSana\_42, Icarian\_42
- Track 4 : Softsoap\_39, BubbaBear\_38, AylexOG\_41, Burritobowl\_39, Eula\_40
- Track 5 : Finalfrontier\_39
- Track 6 : Lilo27\_40, Nicky22\_40
- Track 7 : Phisb\_40, Swervy\_40
- Track 8 : Kenzers\_39, Lynlen\_39
- Track 9 : Didgeridoo\_41
- Track 10 : Pecas\_40, QMacho\_42
- Track 11 : DirtyBubble\_39, Stromboli\_40
- Track 12 : Albedo\_40
- Track 13 : Elva\_41
- Track 14 : SirBeanington\_39
- Track 15 : Lahqtemish\_38
- Track 16 : Slay\_40
- Track 17 : IndyLu\_38
- Track 18 : CanFranMach\_40
- Track 19 : Kate33\_39
- Track 20 : PhigPhack\_40
- Track 21 : Bengal\_40
- Track 22 : SarBear\_39
- Track 23 : PastaFagioli\_38
- Track 24 : BabyDaisy\_38
- Track 25 : SansAfet\_40

### ***Summary of Final Annotations (See graph section above for start numbers):***

The start number called the most often in the published annotations is 9, it was called in 34 of the 34 non-draft genes in the pham.

Genes that call this "Most Annotated" start:

- Albedo\_40, AnnaLie\_40, AylexOG\_41, BabyDaisy\_38, BelmontSKP\_40, Bengal\_40, BubbaBear\_38, Burritobowl\_39, CanFranMach\_40, Didgeridoo\_41, DirtyBubble\_39,

Elva\_41, Eula\_40, Finalfrontier\_39, Icarian\_42, IndyLu\_38, Kate33\_39, Kenzers\_39, Lahqtemish\_38, Lilo27\_40, Lynlen\_39, Nicky22\_40, PastaFagioli\_38, Pecas\_40, PhigPhack\_40, Phisb\_40, QMacho\_42, Quenya\_38, SanaSana\_42, SansAfet\_40, SarBear\_39, SirBeanington\_39, Slay\_40, Softsoap\_39, Stoor\_40, Stromboli\_40, Swervy\_40,

Genes that have the "Most Annotated" start but do not call it:

- 

Genes that do not have the "Most Annotated" start:

- 

### Summary by start number:

Start 9:

- Found in 37 of 37 ( 100.0% ) of genes in pham
- Manual Annotations of this start: 34 of 34
- Called 100.0% of time when present
- Phage (with cluster) where this start called: Albedo\_40 (EB), AnnaLie\_40 (EB), AylexOG\_41 (EB), BabyDaisy\_38 (EB), BelmontSKP\_40 (EB), Bengal\_40 (EB), BubbaBear\_38 (EB), Burritobowl\_39 (EB), CanFranMach\_40 (EB), Didgeridoo\_41 (EB), DirtyBubble\_39 (EB), Elva\_41 (EB), Eula\_40 (EB), Finalfrontier\_39 (EB), Icarian\_42 (EB), IndyLu\_38 (EB), Kate33\_39 (EB), Kenzers\_39 (EB), Lahqtemish\_38 (EB), Lilo27\_40 (EB), Lynlen\_39 (EB), Nicky22\_40 (EB), PastaFagioli\_38 (EB), Pecas\_40 (EB), PhigPhack\_40 (EB), Phisb\_40 (EB), QMacho\_42 (EB), Quenya\_38 (EB), SanaSana\_42 (EB), SansAfet\_40 (EB), SarBear\_39 (EB), SirBeanington\_39 (EB), Slay\_40 (EB), Softsoap\_39 (EB), Stoor\_40 (EB), Stromboli\_40 (EB), Swervy\_40 (EB),

### Summary by clusters:

There is one cluster represented in this pham: EB

Info for manual annotations of cluster EB:

- Start number 9 was manually annotated 34 times for cluster EB.

### Gene Information:

Gene: Albedo\_40 Start: 26678, Stop: 27001, Start Num: 9

Candidate Starts for Albedo\_40:

(2, 26366), (3, 26369), (Start: 9 @26678 has 34 MA's), (14, 26729), (19, 26765), (22, 26801), (23, 26804), (24, 26810), (30, 26924), (32, 26960),

Gene: AnnaLie\_40 Start: 26779, Stop: 27129, Start Num: 9

Candidate Starts for AnnaLie\_40:

(Start: 9 @26779 has 34 MA's), (14, 26830), (23, 26908), (30, 27052), (32, 27088),

Gene: AylexOG\_41 Start: 26853, Stop: 27203, Start Num: 9

Candidate Starts for AylexOG\_41:

(Start: 9 @26853 has 34 MA's), (14, 26904), (23, 26982), (30, 27126), (32, 27162),

Gene: BabyDaisy\_38 Start: 26417, Stop: 26773, Start Num: 9  
Candidate Starts for BabyDaisy\_38:  
(8, 26369), (Start: 9 @26417 has 34 MA's), (14, 26468), (23, 26546), (26, 26591), (27, 26594), (30, 26696), (32, 26732),

Gene: BelmontSKP\_40 Start: 26779, Stop: 27129, Start Num: 9  
Candidate Starts for BelmontSKP\_40:  
(Start: 9 @26779 has 34 MA's), (14, 26830), (23, 26908), (30, 27052), (32, 27088),

Gene: Bengal\_40 Start: 26408, Stop: 26773, Start Num: 9  
Candidate Starts for Bengal\_40:  
(Start: 9 @26408 has 34 MA's), (11, 26450), (12, 26453), (15, 26465), (16, 26468), (17, 26486), (19, 26504), (22, 26540), (23, 26543), (30, 26696), (32, 26732),

Gene: BubbaBear\_38 Start: 26352, Stop: 26702, Start Num: 9  
Candidate Starts for BubbaBear\_38:  
(Start: 9 @26352 has 34 MA's), (14, 26403), (23, 26481), (30, 26625), (32, 26661),

Gene: Burritobowl\_39 Start: 26353, Stop: 26703, Start Num: 9  
Candidate Starts for Burritobowl\_39:  
(Start: 9 @26353 has 34 MA's), (14, 26404), (23, 26482), (30, 26626), (32, 26662),

Gene: CanFranMach\_40 Start: 26434, Stop: 26751, Start Num: 9  
Candidate Starts for CanFranMach\_40:  
(Start: 9 @26434 has 34 MA's), (14, 26485), (21, 26518), (25, 26551), (30, 26674),

Gene: Didgeridoo\_41 Start: 26825, Stop: 27154, Start Num: 9  
Candidate Starts for Didgeridoo\_41:  
(Start: 9 @26825 has 34 MA's), (23, 26927), (26, 26972), (27, 26975), (29, 27044), (30, 27077), (32, 27113),

Gene: DirtyBubble\_39 Start: 27207, Stop: 27503, Start Num: 9  
Candidate Starts for DirtyBubble\_39:  
(Start: 9 @27207 has 34 MA's), (10, 27219), (14, 27246), (18, 27267), (20, 27297), (30, 27426), (31, 27453),

Gene: Elva\_41 Start: 27269, Stop: 27622, Start Num: 9  
Candidate Starts for Elva\_41:  
(Start: 9 @27269 has 34 MA's), (14, 27320), (23, 27398), (26, 27443), (30, 27545),

Gene: Eula\_40 Start: 26454, Stop: 26804, Start Num: 9  
Candidate Starts for Eula\_40:  
(Start: 9 @26454 has 34 MA's), (14, 26505), (23, 26583), (30, 26727), (32, 26763),

Gene: Finalfrontier\_39 Start: 27068, Stop: 27397, Start Num: 9  
Candidate Starts for Finalfrontier\_39:  
(Start: 9 @27068 has 34 MA's), (23, 27170), (26, 27215), (27, 27218), (29, 27287), (30, 27320), (32, 27356),

Gene: Icarian\_42 Start: 27843, Stop: 28139, Start Num: 9  
Candidate Starts for Icarian\_42:  
(Start: 9 @27843 has 34 MA's), (10, 27855), (14, 27882), (18, 27903), (20, 27933), (30, 28062),

Gene: IndyLu\_38 Start: 26383, Stop: 26739, Start Num: 9  
Candidate Starts for IndyLu\_38:  
(4, 26098), (5, 26224), (Start: 9 @26383 has 34 MA's), (14, 26434), (23, 26512), (27, 26560), (30, 26662), (32, 26698),

Gene: Kate33\_39 Start: 26148, Stop: 26477, Start Num: 9  
Candidate Starts for Kate33\_39:  
(Start: 9 @26148 has 34 MA's), (13, 26187), (23, 26250), (26, 26295), (27, 26298), (30, 26400), (32, 26436),

Gene: Kenzers\_39 Start: 26376, Stop: 26675, Start Num: 9  
Candidate Starts for Kenzers\_39:  
(Start: 9 @26376 has 34 MA's), (19, 26439), (22, 26475), (23, 26478), (30, 26598), (32, 26634),

Gene: Lahqtemish\_38 Start: 26424, Stop: 26780, Start Num: 9  
Candidate Starts for Lahqtemish\_38:  
(Start: 9 @26424 has 34 MA's), (14, 26475), (23, 26553), (26, 26598), (30, 26703), (32, 26739),

Gene: Lilo27\_40 Start: 26363, Stop: 26713, Start Num: 9  
Candidate Starts for Lilo27\_40:  
(Start: 9 @26363 has 34 MA's), (14, 26414), (23, 26492), (30, 26636), (32, 26672),

Gene: Lynlen\_39 Start: 26376, Stop: 26675, Start Num: 9  
Candidate Starts for Lynlen\_39:  
(Start: 9 @26376 has 34 MA's), (19, 26439), (22, 26475), (23, 26478), (30, 26598), (32, 26634),

Gene: Nicky22\_40 Start: 26917, Stop: 27267, Start Num: 9  
Candidate Starts for Nicky22\_40:  
(Start: 9 @26917 has 34 MA's), (14, 26968), (23, 27046), (30, 27190), (32, 27226),

Gene: PastaFagioli\_38 Start: 26409, Stop: 26765, Start Num: 9  
Candidate Starts for PastaFagioli\_38:  
(Start: 9 @26409 has 34 MA's), (14, 26460), (23, 26538), (26, 26583), (27, 26586), (30, 26688), (32, 26724),

Gene: Pecas\_40 Start: 26669, Stop: 27022, Start Num: 9  
Candidate Starts for Pecas\_40:  
(Start: 9 @26669 has 34 MA's), (14, 26720), (23, 26798), (28, 26855), (30, 26945), (32, 26981),

Gene: PhigPhack\_40 Start: 26279, Stop: 26629, Start Num: 9  
Candidate Starts for PhigPhack\_40:  
(Start: 9 @26279 has 34 MA's), (14, 26330), (23, 26408), (30, 26552), (32, 26588),

Gene: Phisb\_40 Start: 26510, Stop: 26863, Start Num: 9  
Candidate Starts for Phisb\_40:  
(8, 26462), (Start: 9 @26510 has 34 MA's), (14, 26561), (23, 26639), (30, 26786), (32, 26822),

Gene: QMacho\_42 Start: 27152, Stop: 27505, Start Num: 9  
Candidate Starts for QMacho\_42:  
(Start: 9 @27152 has 34 MA's), (14, 27203), (23, 27281), (28, 27338), (30, 27428), (32, 27464),

Gene: Quenya\_38 Start: 26614, Stop: 26925, Start Num: 9  
Candidate Starts for Quenya\_38:

(1, 26302), (6, 26464), (7, 26491), (Start: 9 @26614 has 34 MA's), (14, 26671), (21, 26710), (30, 26839), (32, 26875), (33, 26908),

Gene: SanaSana\_42 Start: 28045, Stop: 28341, Start Num: 9

Candidate Starts for SanaSana\_42:

(Start: 9 @28045 has 34 MA's), (10, 28057), (14, 28084), (18, 28105), (20, 28135), (30, 28264),

Gene: SansAfet\_40 Start: 26366, Stop: 26716, Start Num: 9

Candidate Starts for SansAfet\_40:

(Start: 9 @26366 has 34 MA's), (14, 26417), (23, 26495), (30, 26639), (32, 26675),

Gene: SarBear\_39 Start: 26231, Stop: 26512, Start Num: 9

Candidate Starts for SarBear\_39:

(8, 26183), (Start: 9 @26231 has 34 MA's), (14, 26282), (30, 26435), (32, 26471),

Gene: SirBeanington\_39 Start: 26552, Stop: 26902, Start Num: 9

Candidate Starts for SirBeanington\_39:

(8, 26504), (Start: 9 @26552 has 34 MA's), (14, 26603), (23, 26681), (30, 26825), (32, 26861),

Gene: Slay\_40 Start: 26911, Stop: 27240, Start Num: 9

Candidate Starts for Slay\_40:

(Start: 9 @26911 has 34 MA's), (13, 26950), (23, 27013), (26, 27058), (27, 27061), (30, 27163), (32, 27199),

Gene: Softsoap\_39 Start: 26277, Stop: 26627, Start Num: 9

Candidate Starts for Softsoap\_39:

(Start: 9 @26277 has 34 MA's), (14, 26328), (23, 26406), (30, 26550), (32, 26586),

Gene: Stoor\_40 Start: 27714, Stop: 28010, Start Num: 9

Candidate Starts for Stoor\_40:

(Start: 9 @27714 has 34 MA's), (10, 27726), (14, 27753), (18, 27774), (20, 27804), (30, 27933),

Gene: Stromboli\_40 Start: 27577, Stop: 27873, Start Num: 9

Candidate Starts for Stromboli\_40:

(Start: 9 @27577 has 34 MA's), (10, 27589), (14, 27616), (18, 27637), (20, 27667), (30, 27796), (31, 27823),

Gene: Swervy\_40 Start: 26431, Stop: 26784, Start Num: 9

Candidate Starts for Swervy\_40:

(8, 26383), (Start: 9 @26431 has 34 MA's), (14, 26482), (23, 26560), (30, 26707), (32, 26743),