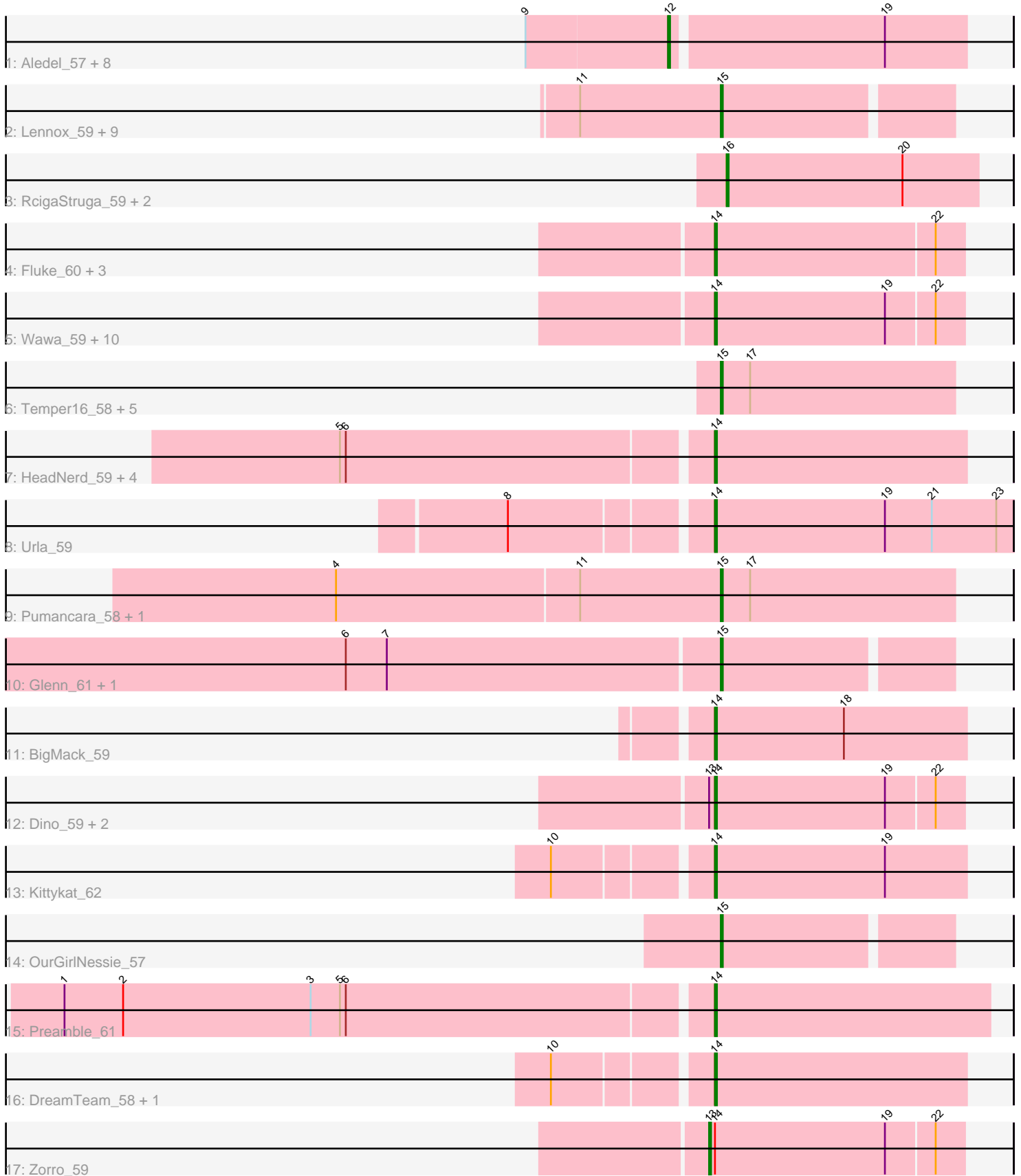


Pham 308622



Note: Tracks are now grouped by subcluster and scaled. Switching in subcluster is indicated by changes in track color. Track scale is now set by default to display the region 30 bp upstream of start 1 to 30 bp downstream of the last possible start. If this default region is judged to be packed too tightly with annotated starts, the track will be further scaled to only show that region of the ORF with annotated starts. This action will be indicated by adding "Zoomed" to the title. For starts, yellow indicates the location of called starts comprised solely of Glimmer/GeneMark auto-annotations, green indicates the location of called starts with at least 1 manual gene annotation.

Pham 308622 Report

This analysis was run 06/27/26 on database version 652.

Pham number 308622 has 63 members, 0 are drafts.

Phages represented in each track:

- Track 1 : Aledel_57, Chridison_54, Riovina_57, AustinPowers_57, Eunoia_59, OMalley_57, Supakev_57, HunterDalle_57, Vulture_57
- Track 2 : Lennox_59, Nancia_59, PitaDog_59, CristinaYang_59, Lucy_58, Christian_59, Bodacious_59, Lasagna_57, LilStuart_58, DrRobert_57
- Track 3 : RcigaStruga_59, Huntingdon_59, Misaeng_58
- Track 4 : Fluke_60, Jumboset_60, Riverdale_59, Scuttle_59
- Track 5 : Wawa_59, MeganNoll_60, Rozby_58, TattModd_58, RAP15_61, Potatoes_59, MrGloopy_60, Cholula_59, BrotherBLo_59, Savage2526_59, Immaculata_59
- Track 6 : Temper16_58, Sergei_58, KingBob_58, Maria1952_57, Daiboju_58, Herb_58
- Track 7 : HeadNerd_59, Bennie_60, Moki_59, Beethoven_60, Huckleberry_59
- Track 8 : Urla_59
- Track 9 : Pumancara_58, PinkFriday_58
- Track 10 : Glenn_61, Carpal_59
- Track 11 : BigMack_59
- Track 12 : Dino_59, Vallejo_59, Kalizoi_59
- Track 13 : Kittykat_62
- Track 14 : OurGirlNessie_57
- Track 15 : Preamble_61
- Track 16 : DreamTeam_58, Gisselle_58
- Track 17 : Zorro_59

Summary of Final Annotations (See graph section above for start numbers):

The start number called the most often in the published annotations is 14, it was called in 29 of the 63 non-draft genes in the pham.

Genes that call this "Most Annotated" start:

- Beethoven_60, Bennie_60, BigMack_59, BrotherBLo_59, Cholula_59, Dino_59, DreamTeam_58, Fluke_60, Gisselle_58, HeadNerd_59, Huckleberry_59, Immaculata_59, Jumboset_60, Kalizoi_59, Kittykat_62, MeganNoll_60, Moki_59, MrGloopy_60, Potatoes_59, Preamble_61, RAP15_61, Riverdale_59, Rozby_58, Savage2526_59, Scuttle_59, TattModd_58, Urla_59, Vallejo_59, Wawa_59,

Genes that have the "Most Annotated" start but do not call it:

- Zorro_59,

Genes that do not have the "Most Annotated" start:

- Aledel_57, AustinPowers_57, Bodacious_59, Carpal_59, Chridison_54, Christian_59, CristinaYang_59, Daiboju_58, DrRobert_57, Eunoia_59, Glenn_61, Herb_58, HunterDalle_57, Huntingdon_59, KingBob_58, Lasagna_57, Lennox_59, LilStuart_58, Lucy_58, Maria1952_57, Misaeng_58, Nancia_59, OMalley_57, OurGirlNessie_57, PinkFriday_58, PitaDog_59, Pumancara_58, RcigaStruga_59, Riovina_57, Sergei_58, Supakev_57, Temper16_58, Vulture_57,

Summary by start number:

Start 12:

- Found in 9 of 63 (14.3%) of genes in pham
- Manual Annotations of this start: 9 of 63
- Called 100.0% of time when present
- Phage (with cluster) where this start called: Aledel_57 (AK), AustinPowers_57 (AK), Chridison_54 (AK), Eunoia_59 (AK), HunterDalle_57 (AK), OMalley_57 (AK), Riovina_57 (AK), Supakev_57 (AK), Vulture_57 (AK),

Start 13:

- Found in 4 of 63 (6.3%) of genes in pham
- Manual Annotations of this start: 1 of 63
- Called 25.0% of time when present
- Phage (with cluster) where this start called: Zorro_59 (AK),

Start 14:

- Found in 30 of 63 (47.6%) of genes in pham
- Manual Annotations of this start: 29 of 63
- Called 96.7% of time when present
- Phage (with cluster) where this start called: Beethoven_60 (AK), Bennie_60 (AK), BigMack_59 (AK), BrotherBLo_59 (AK), Cholula_59 (AK), Dino_59 (AK), DreamTeam_58 (AK), Fluke_60 (AK), Gisselle_58 (AK), HeadNerd_59 (AK), Huckleberry_59 (AK), Immaculata_59 (AK), Jumboset_60 (AK), Kalizoi_59 (AK), Kittykat_62 (AK), MeganNoll_60 (AK), Moki_59 (AK), MrGloopy_60 (AK), Potatoes_59 (AK), Preamble_61 (AK), RAP15_61 (AK), Riverdale_59 (AK), Rozby_58 (AK), Savage2526_59 (AK), Scuttle_59 (AK), TattModd_58 (AK), Urla_59 (AK), Vallejo_59 (AK), Wawa_59 (AK),

Start 15:

- Found in 21 of 63 (33.3%) of genes in pham
- Manual Annotations of this start: 21 of 63
- Called 100.0% of time when present
- Phage (with cluster) where this start called: Bodacious_59 (AK), Carpal_59 (AK), Christian_59 (AK), CristinaYang_59 (AK), Daiboju_58 (AK), DrRobert_57 (AK), Glenn_61 (AK), Herb_58 (AK), KingBob_58 (AK), Lasagna_57 (AK), Lennox_59 (AK), LilStuart_58 (AK), Lucy_58 (AK), Maria1952_57 (AK), Nancia_59 (AK), OurGirlNessie_57 (AK), PinkFriday_58 (AK), PitaDog_59 (AK), Pumancara_58 (AK), Sergei_58 (AK), Temper16_58 (AK),

Start 16:

- Found in 3 of 63 (4.8%) of genes in pham
- Manual Annotations of this start: 3 of 63
- Called 100.0% of time when present
- Phage (with cluster) where this start called: Huntingdon_59 (AK), Misaeng_58 (AK), RcigaStruga_59 (AK),

Summary by clusters:

There is one cluster represented in this pham: AK

Info for manual annotations of cluster AK:

- Start number 12 was manually annotated 9 times for cluster AK.
- Start number 13 was manually annotated 1 time for cluster AK.
- Start number 14 was manually annotated 29 times for cluster AK.
- Start number 15 was manually annotated 21 times for cluster AK.
- Start number 16 was manually annotated 3 times for cluster AK.

Gene Information:

Gene: Aledel_57 Start: 42674, Stop: 42820, Start Num: 12

Candidate Starts for Aledel_57:

(9, 42602), (Start: 12 @42674 has 9 MA's), (19, 42779),

Gene: AustinPowers_57 Start: 42696, Stop: 42842, Start Num: 12

Candidate Starts for AustinPowers_57:

(9, 42624), (Start: 12 @42696 has 9 MA's), (19, 42801),

Gene: Beethoven_60 Start: 43018, Stop: 43146, Start Num: 14

Candidate Starts for Beethoven_60:

(5, 42835), (6, 42838), (Start: 14 @43018 has 29 MA's),

Gene: Bennie_60 Start: 42158, Stop: 42286, Start Num: 14

Candidate Starts for Bennie_60:

(5, 41975), (6, 41978), (Start: 14 @42158 has 29 MA's),

Gene: BigMack_59 Start: 42386, Stop: 42514, Start Num: 14

Candidate Starts for BigMack_59:

(Start: 14 @42386 has 29 MA's), (18, 42452),

Gene: Bodacious_59 Start: 42359, Stop: 42472, Start Num: 15

Candidate Starts for Bodacious_59:

(11, 42287), (Start: 15 @42359 has 21 MA's),

Gene: BrotherBLo_59 Start: 42717, Stop: 42842, Start Num: 14

Candidate Starts for BrotherBLo_59:

(Start: 14 @42717 has 29 MA's), (19, 42804), (22, 42828),

Gene: Carpal_59 Start: 42825, Stop: 42938, Start Num: 15

Candidate Starts for Carpal_59:

(6, 42636), (7, 42657), (Start: 15 @42825 has 21 MA's),

Gene: Cholula_59 Start: 42727, Stop: 42852, Start Num: 14
Candidate Starts for Cholula_59:
(Start: 14 @42727 has 29 MA's), (19, 42814), (22, 42838),

Gene: Chridison_54 Start: 41952, Stop: 42098, Start Num: 12
Candidate Starts for Chridison_54:
(9, 41880), (Start: 12 @41952 has 9 MA's), (19, 42057),

Gene: Christian_59 Start: 42201, Stop: 42314, Start Num: 15
Candidate Starts for Christian_59:
(11, 42129), (Start: 15 @42201 has 21 MA's),

Gene: CristinaYang_59 Start: 42486, Stop: 42599, Start Num: 15
Candidate Starts for CristinaYang_59:
(11, 42414), (Start: 15 @42486 has 21 MA's),

Gene: Daiboju_58 Start: 43065, Stop: 43184, Start Num: 15
Candidate Starts for Daiboju_58:
(Start: 15 @43065 has 21 MA's), (17, 43080),

Gene: Dino_59 Start: 42630, Stop: 42755, Start Num: 14
Candidate Starts for Dino_59:
(Start: 13 @42627 has 1 MA's), (Start: 14 @42630 has 29 MA's), (19, 42717), (22, 42741),

Gene: DrRobert_57 Start: 41720, Stop: 41833, Start Num: 15
Candidate Starts for DrRobert_57:
(11, 41648), (Start: 15 @41720 has 21 MA's),

Gene: DreamTeam_58 Start: 42096, Stop: 42224, Start Num: 14
Candidate Starts for DreamTeam_58:
(10, 42024), (Start: 14 @42096 has 29 MA's),

Gene: Eunoia_59 Start: 43351, Stop: 43497, Start Num: 12
Candidate Starts for Eunoia_59:
(9, 43279), (Start: 12 @43351 has 9 MA's), (19, 43456),

Gene: Fluke_60 Start: 43088, Stop: 43213, Start Num: 14
Candidate Starts for Fluke_60:
(Start: 14 @43088 has 29 MA's), (22, 43199),

Gene: Gisselle_58 Start: 42096, Stop: 42224, Start Num: 14
Candidate Starts for Gisselle_58:
(10, 42024), (Start: 14 @42096 has 29 MA's),

Gene: Glenn_61 Start: 43552, Stop: 43665, Start Num: 15
Candidate Starts for Glenn_61:
(6, 43363), (7, 43384), (Start: 15 @43552 has 21 MA's),

Gene: HeadNerd_59 Start: 42052, Stop: 42180, Start Num: 14
Candidate Starts for HeadNerd_59:
(5, 41869), (6, 41872), (Start: 14 @42052 has 29 MA's),

Gene: Herb_58 Start: 43064, Stop: 43183, Start Num: 15

Candidate Starts for Herb_58:
(Start: 15 @43064 has 21 MA's), (17, 43079),

Gene: Huckleberry_59 Start: 42056, Stop: 42184, Start Num: 14
Candidate Starts for Huckleberry_59:
(5, 41873), (6, 41876), (Start: 14 @42056 has 29 MA's),

Gene: HunterDalle_57 Start: 42273, Stop: 42419, Start Num: 12
Candidate Starts for HunterDalle_57:
(9, 42201), (Start: 12 @42273 has 9 MA's), (19, 42378),

Gene: Huntingdon_59 Start: 43014, Stop: 43142, Start Num: 16
Candidate Starts for Huntingdon_59:
(Start: 16 @43014 has 3 MA's), (20, 43104),

Gene: Immaculata_59 Start: 42727, Stop: 42852, Start Num: 14
Candidate Starts for Immaculata_59:
(Start: 14 @42727 has 29 MA's), (19, 42814), (22, 42838),

Gene: Jumboset_60 Start: 43056, Stop: 43181, Start Num: 14
Candidate Starts for Jumboset_60:
(Start: 14 @43056 has 29 MA's), (22, 43167),

Gene: Kalizoi_59 Start: 42584, Stop: 42709, Start Num: 14
Candidate Starts for Kalizoi_59:
(Start: 13 @42581 has 1 MA's), (Start: 14 @42584 has 29 MA's), (19, 42671), (22, 42695),

Gene: KingBob_58 Start: 43065, Stop: 43184, Start Num: 15
Candidate Starts for KingBob_58:
(Start: 15 @43065 has 21 MA's), (17, 43080),

Gene: Kittykat_62 Start: 42610, Stop: 42738, Start Num: 14
Candidate Starts for Kittykat_62:
(10, 42538), (Start: 14 @42610 has 29 MA's), (19, 42697),

Gene: Lasagna_57 Start: 41722, Stop: 41835, Start Num: 15
Candidate Starts for Lasagna_57:
(11, 41650), (Start: 15 @41722 has 21 MA's),

Gene: Lennox_59 Start: 42207, Stop: 42320, Start Num: 15
Candidate Starts for Lennox_59:
(11, 42135), (Start: 15 @42207 has 21 MA's),

Gene: LilStuart_58 Start: 42070, Stop: 42183, Start Num: 15
Candidate Starts for LilStuart_58:
(11, 41998), (Start: 15 @42070 has 21 MA's),

Gene: Lucy_58 Start: 42065, Stop: 42178, Start Num: 15
Candidate Starts for Lucy_58:
(11, 41993), (Start: 15 @42065 has 21 MA's),

Gene: Maria1952_57 Start: 43064, Stop: 43183, Start Num: 15
Candidate Starts for Maria1952_57:

(Start: 15 @43064 has 21 MA's), (17, 43079),

Gene: MeganNoll_60 Start: 43325, Stop: 43450, Start Num: 14

Candidate Starts for MeganNoll_60:

(Start: 14 @43325 has 29 MA's), (19, 43412), (22, 43436),

Gene: Misaeng_58 Start: 42940, Stop: 43068, Start Num: 16

Candidate Starts for Misaeng_58:

(Start: 16 @42940 has 3 MA's), (20, 43030),

Gene: Moki_59 Start: 42245, Stop: 42373, Start Num: 14

Candidate Starts for Moki_59:

(5, 42062), (6, 42065), (Start: 14 @42245 has 29 MA's),

Gene: MrGloopy_60 Start: 42977, Stop: 43102, Start Num: 14

Candidate Starts for MrGloopy_60:

(Start: 14 @42977 has 29 MA's), (19, 43064), (22, 43088),

Gene: Nancia_59 Start: 42358, Stop: 42471, Start Num: 15

Candidate Starts for Nancia_59:

(11, 42286), (Start: 15 @42358 has 21 MA's),

Gene: OMalley_57 Start: 42674, Stop: 42820, Start Num: 12

Candidate Starts for OMalley_57:

(9, 42602), (Start: 12 @42674 has 9 MA's), (19, 42779),

Gene: OurGirlNessie_57 Start: 41681, Stop: 41794, Start Num: 15

Candidate Starts for OurGirlNessie_57:

(Start: 15 @41681 has 21 MA's),

Gene: PinkFriday_58 Start: 42314, Stop: 42433, Start Num: 15

Candidate Starts for PinkFriday_58:

(4, 42119), (11, 42242), (Start: 15 @42314 has 21 MA's), (17, 42329),

Gene: PitaDog_59 Start: 42083, Stop: 42196, Start Num: 15

Candidate Starts for PitaDog_59:

(11, 42011), (Start: 15 @42083 has 21 MA's),

Gene: Potatoes_59 Start: 42727, Stop: 42852, Start Num: 14

Candidate Starts for Potatoes_59:

(Start: 14 @42727 has 29 MA's), (19, 42814), (22, 42838),

Gene: Preamble_61 Start: 42480, Stop: 42620, Start Num: 14

Candidate Starts for Preamble_61:

(1, 42156), (2, 42186), (3, 42282), (5, 42297), (6, 42300), (Start: 14 @42480 has 29 MA's),

Gene: Pumancara_58 Start: 41978, Stop: 42097, Start Num: 15

Candidate Starts for Pumancara_58:

(4, 41783), (11, 41906), (Start: 15 @41978 has 21 MA's), (17, 41993),

Gene: RAP15_61 Start: 43326, Stop: 43451, Start Num: 14

Candidate Starts for RAP15_61:

(Start: 14 @43326 has 29 MA's), (19, 43413), (22, 43437),

Gene: RcigaStruga_59 Start: 43014, Stop: 43142, Start Num: 16
Candidate Starts for RcigaStruga_59:
(Start: 16 @43014 has 3 MA's), (20, 43104),

Gene: Riovina_57 Start: 42674, Stop: 42820, Start Num: 12
Candidate Starts for Riovina_57:
(9, 42602), (Start: 12 @42674 has 9 MA's), (19, 42779),

Gene: Riverdale_59 Start: 42667, Stop: 42792, Start Num: 14
Candidate Starts for Riverdale_59:
(Start: 14 @42667 has 29 MA's), (22, 42778),

Gene: Rozby_58 Start: 42471, Stop: 42596, Start Num: 14
Candidate Starts for Rozby_58:
(Start: 14 @42471 has 29 MA's), (19, 42558), (22, 42582),

Gene: Savage2526_59 Start: 42694, Stop: 42819, Start Num: 14
Candidate Starts for Savage2526_59:
(Start: 14 @42694 has 29 MA's), (19, 42781), (22, 42805),

Gene: Scuttle_59 Start: 43005, Stop: 43130, Start Num: 14
Candidate Starts for Scuttle_59:
(Start: 14 @43005 has 29 MA's), (22, 43116),

Gene: Sergei_58 Start: 43065, Stop: 43184, Start Num: 15
Candidate Starts for Sergei_58:
(Start: 15 @43065 has 21 MA's), (17, 43080),

Gene: Supakev_57 Start: 42701, Stop: 42847, Start Num: 12
Candidate Starts for Supakev_57:
(9, 42629), (Start: 12 @42701 has 9 MA's), (19, 42806),

Gene: TattModd_58 Start: 42612, Stop: 42737, Start Num: 14
Candidate Starts for TattModd_58:
(Start: 14 @42612 has 29 MA's), (19, 42699), (22, 42723),

Gene: Temper16_58 Start: 43065, Stop: 43184, Start Num: 15
Candidate Starts for Temper16_58:
(Start: 15 @43065 has 21 MA's), (17, 43080),

Gene: Urla_59 Start: 43020, Stop: 43172, Start Num: 14
Candidate Starts for Urla_59:
(8, 42924), (Start: 14 @43020 has 29 MA's), (19, 43107), (21, 43131), (23, 43164),

Gene: Vallejo_59 Start: 42674, Stop: 42799, Start Num: 14
Candidate Starts for Vallejo_59:
(Start: 13 @42671 has 1 MA's), (Start: 14 @42674 has 29 MA's), (19, 42761), (22, 42785),

Gene: Vulture_57 Start: 42273, Stop: 42419, Start Num: 12
Candidate Starts for Vulture_57:
(9, 42201), (Start: 12 @42273 has 9 MA's), (19, 42378),

Gene: Wawa_59 Start: 42917, Stop: 43042, Start Num: 14

Candidate Starts for Wawa_59:

(Start: 14 @42917 has 29 MA's), (19, 43004), (22, 43028),

Gene: Zorro_59 Start: 42627, Stop: 42755, Start Num: 13

Candidate Starts for Zorro_59:

(Start: 13 @42627 has 1 MA's), (Start: 14 @42630 has 29 MA's), (19, 42717), (22, 42741),