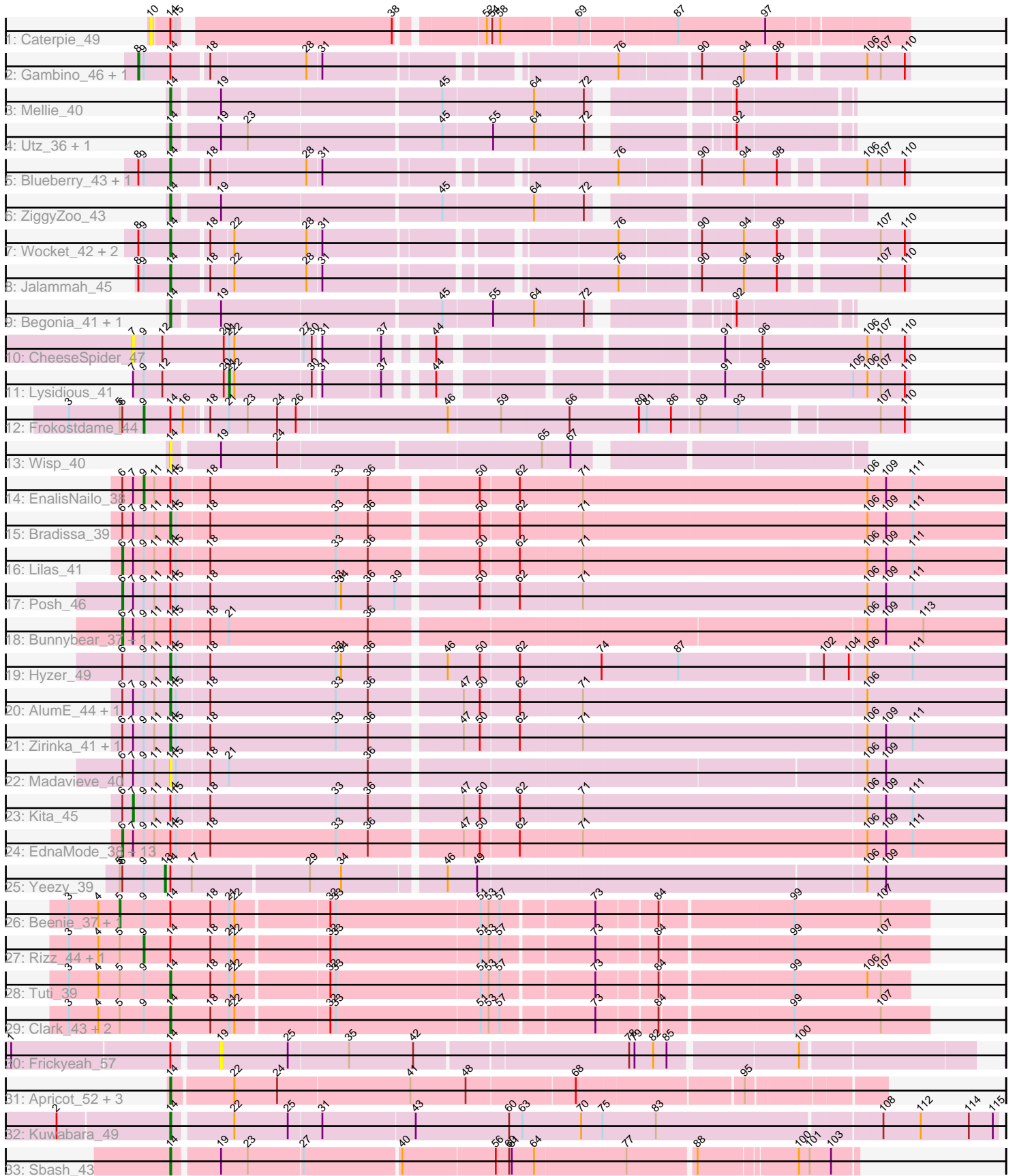


Pham 308632



Note: Tracks are now grouped by subcluster and scaled. Switching in subcluster is indicated by changes in track color. Track scale is now set by default to display the region 30 bp upstream of start 1 to 30 bp downstream of the last possible start. If this default region is judged to be packed too tightly with annotated starts, the track will be further scaled to only show that region of the ORF with annotated starts. This action will be indicated by adding "Zoomed" to the title. For starts, yellow indicates the location of called starts comprised solely of Glimmer/GeneMark auto-annotations, green indicates the location of called starts with at least 1 manual gene annotation.

Pham 308632 Report

This analysis was run 06/27/26 on database version 652.

Pham number 308632 has 62 members, 6 are drafts.

Phages represented in each track:

- Track 1 : Caterpie_49
- Track 2 : Gambino_46, Azula_44
- Track 3 : Mellie_40
- Track 4 : Utz_36, Samba_41
- Track 5 : Blueberry_43, MissRona_44
- Track 6 : ZiggyZoo_43
- Track 7 : Wocket_42, Fenry_40, KappaFarmDelta_43
- Track 8 : Jalammah_45
- Track 9 : Begonia_41, Malachai_41
- Track 10 : CheeseSpider_47
- Track 11 : Lysidious_41
- Track 12 : Frokostdame_44
- Track 13 : Wisp_40
- Track 14 : EnalisNailo_38
- Track 15 : Bradissa_39
- Track 16 : Lilas_41
- Track 17 : Posh_46
- Track 18 : Bunnybear_37, Maridalia_45
- Track 19 : Hyzer_49
- Track 20 : AlumE_44, BoyNamedSue_44
- Track 21 : Zirinka_41, Bialota_42
- Track 22 : Madavieve_40
- Track 23 : Kita_45
- Track 24 : EdnaMode_38, Polly_41, Eudoria_44, Pickett_37, Neobush_44, SoilAssassin_39, LordFarquaad_41, Trumpet_44, Tayonia_44, Antonio_44, Suscepit_44, Zameen_44, Attis_39, Yeet412_39
- Track 25 : Yeezy_39
- Track 26 : Beenie_37, Sekhmet_44
- Track 27 : Rizz_44, Samman98_44
- Track 28 : Tuti_39
- Track 29 : Clark_43, Invectra_45, MichaelScott_44
- Track 30 : Frickyeah_57
- Track 31 : Apricot_52, Crater_52, PhorbesPhlower_36, Phistory_54
- Track 32 : Kuwabara_49
- Track 33 : Sbash_43

Summary of Final Annotations (See graph section above for start numbers):

The start number called the most often in the published annotations is 14, it was called in 28 of the 56 non-draft genes in the pham.

Genes that call this "Most Annotated" start:

- AlumE_44, Apricot_52, Begonia_41, Bialota_42, Blueberry_43, BoyNamedSue_44, Bradissa_39, Clark_43, Crater_52, Fenry_40, Hyzer_49, Invecetra_45, Jalammah_45, KappaFarmDelta_43, Kuwabara_49, Madavieve_40, Malachai_41, Mellie_40, MichaelScott_44, MissRona_44, Phistory_54, PhorbesPhlower_36, Samba_41, Sbash_43, Tuti_39, Utz_36, Wisp_40, Wocket_42, ZiggyZoo_43, Zirinka_41,

Genes that have the "Most Annotated" start but do not call it:

- Antonio_44, Attis_39, Azula_44, Beenie_37, Bunnybear_37, Caterpie_49, EdnaMode_38, EnalisNailo_38, Eudoria_44, Frickyeah_57, Frokostdame_44, Gambino_46, Kita_45, Lilas_41, LordFarquaad_41, Maridalia_45, Neobush_44, Pickett_37, Polly_41, Posh_46, Rizz_44, Samman98_44, Sekhmet_44, SoilAssassin_39, Suscepit_44, Tayonia_44, Trumpet_44, Yeet412_39, Yeezy_39, Zameen_44,

Genes that do not have the "Most Annotated" start:

- CheeseSpider_47, Lysidious_41,

Summary by start number:

Start 5:

- Found in 10 of 62 (16.1%) of genes in pham
- Manual Annotations of this start: 2 of 56
- Called 20.0% of time when present
- Phage (with cluster) where this start called: Beenie_37 (CZ4), Sekhmet_44 (CZ4),

Start 6:

- Found in 29 of 62 (46.8%) of genes in pham
- Manual Annotations of this start: 18 of 56
- Called 62.1% of time when present
- Phage (with cluster) where this start called: Antonio_44 (CZ1), Attis_39 (CZ2), Bunnybear_37 (CZ), EdnaMode_38 (CZ2), Eudoria_44 (CZ1), Lilas_41 (CY1), LordFarquaad_41 (CZ2), Maridalia_45 (CZ1), Neobush_44 (CZ1), Pickett_37 (CZ2), Polly_41 (CZ1), Posh_46 (CY4), SoilAssassin_39 (CZ2), Suscepit_44 (CZ1), Tayonia_44 (CZ1), Trumpet_44 (CZ1), Yeet412_39 (CZ2), Zameen_44 (CZ1),

Start 7:

- Found in 28 of 62 (45.2%) of genes in pham
- Manual Annotations of this start: 1 of 56
- Called 7.1% of time when present
- Phage (with cluster) where this start called: CheeseSpider_47 (CV), Kita_45 (CZ1),

Start 8:

- Found in 8 of 62 (12.9%) of genes in pham
- Manual Annotations of this start: 2 of 56
- Called 25.0% of time when present
- Phage (with cluster) where this start called: Azula_44 (CV), Gambino_46 (CV),

Start 9:

- Found in 47 of 62 (75.8%) of genes in pham
- Manual Annotations of this start: 3 of 56
- Called 8.5% of time when present
- Phage (with cluster) where this start called: EnalisNailo_38 (CY1), Frokostdame_44 (CV), Rizz_44 (CZ4), Samman98_44 (CZ4),

Start 10:

- Found in 1 of 62 (1.6%) of genes in pham
- No Manual Annotations of this start.
- Called 100.0% of time when present
- Phage (with cluster) where this start called: Caterpie_49 (AD),

Start 13:

- Found in 1 of 62 (1.6%) of genes in pham
- Manual Annotations of this start: 1 of 56
- Called 100.0% of time when present
- Phage (with cluster) where this start called: Yeezy_39 (CZ3),

Start 14:

- Found in 60 of 62 (96.8%) of genes in pham
- Manual Annotations of this start: 28 of 56
- Called 50.0% of time when present
- Phage (with cluster) where this start called: AlumE_44 (CZ1), Apricot_52 (DN3), Begonia_41 (CV), Bialota_42 (CZ1), Blueberry_43 (CV), BoyNamedSue_44 (CZ1), Bradissa_39 (CY1), Clark_43 (CZ4), Crater_52 (DN3), Fenry_40 (CV), Hyzer_49 (CZ1), Invectra_45 (CZ4), Jalammah_45 (CV), KappaFarmDelta_43 (CV), Kuwabara_49 (DN4), Madavieve_40 (CZ1), Malachai_41 (CV), Mellie_40 (CV), MichaelScott_44 (CZ4), MissRona_44 (CV), Phistory_54 (DN1), PhorbesPhlower_36 (DH), Samba_41 (CV), Sbash_43 (I2), Tuti_39 (CZ4), Utz_36 (CV), Wisp_40 (CV), Wocket_42 (CV), ZiggyZoo_43 (CV), Zirinka_41 (CZ1),

Start 19:

- Found in 9 of 62 (14.5%) of genes in pham
- No Manual Annotations of this start.
- Called 11.1% of time when present
- Phage (with cluster) where this start called: Frickyeah_57 (DN1),

Start 21:

- Found in 14 of 62 (22.6%) of genes in pham
- Manual Annotations of this start: 1 of 56
- Called 7.1% of time when present
- Phage (with cluster) where this start called: Lysidious_41 (CV),

Summary by clusters:

There are 14 clusters represented in this pham: CY1, CZ1, AD, DH, DN4, CZ2, CZ3, I2, CZ4, CZ, DN1, DN3, CV, CY4,

Info for manual annotations of cluster CV:

- Start number 8 was manually annotated 2 times for cluster CV.

- Start number 9 was manually annotated 1 time for cluster CV.
- Start number 14 was manually annotated 12 times for cluster CV.
- Start number 21 was manually annotated 1 time for cluster CV.

Info for manual annotations of cluster CY1:

- Start number 6 was manually annotated 1 time for cluster CY1.
- Start number 9 was manually annotated 1 time for cluster CY1.
- Start number 14 was manually annotated 1 time for cluster CY1.

Info for manual annotations of cluster CY4:

- Start number 6 was manually annotated 1 time for cluster CY4.

Info for manual annotations of cluster CZ:

- Start number 6 was manually annotated 1 time for cluster CZ.

Info for manual annotations of cluster CZ1:

- Start number 6 was manually annotated 9 times for cluster CZ1.
- Start number 7 was manually annotated 1 time for cluster CZ1.
- Start number 14 was manually annotated 5 times for cluster CZ1.

Info for manual annotations of cluster CZ2:

- Start number 6 was manually annotated 6 times for cluster CZ2.

Info for manual annotations of cluster CZ3:

- Start number 13 was manually annotated 1 time for cluster CZ3.

Info for manual annotations of cluster CZ4:

- Start number 5 was manually annotated 2 times for cluster CZ4.
- Start number 9 was manually annotated 1 time for cluster CZ4.
- Start number 14 was manually annotated 4 times for cluster CZ4.

Info for manual annotations of cluster DH:

- Start number 14 was manually annotated 1 time for cluster DH.

Info for manual annotations of cluster DN1:

- Start number 14 was manually annotated 1 time for cluster DN1.

Info for manual annotations of cluster DN3:

- Start number 14 was manually annotated 2 times for cluster DN3.

Info for manual annotations of cluster DN4:

- Start number 14 was manually annotated 1 time for cluster DN4.

Info for manual annotations of cluster I2:

- Start number 14 was manually annotated 1 time for cluster I2.

Gene Information:

Gene: AlumE_44 Start: 34842, Stop: 33937, Start Num: 14

Candidate Starts for AlumE_44:

(Start: 6 @34896 has 18 MA's), (Start: 7 @34884 has 1 MA's), (Start: 9 @34872 has 3 MA's), (11, 34860), (Start: 14 @34842 has 28 MA's), (15, 34836), (18, 34800), (33, 34659), (36, 34623), (47, 34527), (50, 34509), (62, 34467), (71, 34401), (106, 34092),

Gene: Antonio_44 Start: 34169, Stop: 33210, Start Num: 6

Candidate Starts for Antonio_44:

(Start: 6 @34169 has 18 MA's), (Start: 7 @34157 has 1 MA's), (Start: 9 @34145 has 3 MA's), (11, 34133), (Start: 14 @34115 has 28 MA's), (15, 34109), (18, 34073), (33, 33932), (36, 33896), (47, 33800), (50, 33782), (62, 33740), (71, 33674), (106, 33365), (109, 33344), (111, 33314),

Gene: Apricot_52 Start: 34675, Stop: 33923, Start Num: 14

Candidate Starts for Apricot_52:

(Start: 14 @34675 has 28 MA's), (22, 34609), (24, 34561), (41, 34414), (48, 34354), (68, 34240), (95, 34066),

Gene: Attis_39 Start: 31302, Stop: 30343, Start Num: 6

Candidate Starts for Attis_39:

(Start: 6 @31302 has 18 MA's), (Start: 7 @31290 has 1 MA's), (Start: 9 @31278 has 3 MA's), (11, 31266), (Start: 14 @31248 has 28 MA's), (15, 31242), (18, 31206), (33, 31065), (36, 31029), (47, 30933), (50, 30915), (62, 30873), (71, 30807), (106, 30498), (109, 30477), (111, 30447),

Gene: Azula_44 Start: 34596, Stop: 33832, Start Num: 8

Candidate Starts for Azula_44:

(Start: 8 @34596 has 2 MA's), (Start: 9 @34590 has 3 MA's), (Start: 14 @34560 has 28 MA's), (18, 34524), (28, 34419), (31, 34404), (76, 34119), (90, 34038), (94, 33993), (98, 33960), (106, 33879), (107, 33864), (110, 33837),

Gene: Beenie_37 Start: 32686, Stop: 31826, Start Num: 5

Candidate Starts for Beenie_37:

(3, 32743), (4, 32710), (Start: 5 @32686 has 2 MA's), (Start: 9 @32659 has 3 MA's), (Start: 14 @32629 has 28 MA's), (18, 32584), (Start: 21 @32563 has 1 MA's), (22, 32557), (32, 32458), (33, 32452), (51, 32293), (53, 32284), (57, 32272), (73, 32176), (84, 32113), (99, 31975), (107, 31879),

Gene: Begonia_41 Start: 34637, Stop: 33957, Start Num: 14

Candidate Starts for Begonia_41:

(Start: 14 @34637 has 28 MA's), (19, 34589), (45, 34349), (55, 34298), (64, 34253), (72, 34199), (92, 34070),

Gene: Bialota_42 Start: 34867, Stop: 33962, Start Num: 14

Candidate Starts for Bialota_42:

(Start: 6 @34921 has 18 MA's), (Start: 7 @34909 has 1 MA's), (Start: 9 @34897 has 3 MA's), (11, 34885), (Start: 14 @34867 has 28 MA's), (15, 34861), (18, 34825), (33, 34684), (36, 34648), (47, 34552), (50, 34534), (62, 34492), (71, 34426), (106, 34117), (109, 34096), (111, 34066),

Gene: Blueberry_43 Start: 34560, Stop: 33832, Start Num: 14

Candidate Starts for Blueberry_43:

(Start: 8 @34596 has 2 MA's), (Start: 9 @34590 has 3 MA's), (Start: 14 @34560 has 28 MA's), (18, 34524), (28, 34419), (31, 34404), (76, 34119), (90, 34038), (94, 33993), (98, 33960), (106, 33879), (107, 33864), (110, 33837),

Gene: BoyNamedSue_44 Start: 34842, Stop: 33937, Start Num: 14

Candidate Starts for BoyNamedSue_44:

(Start: 6 @34896 has 18 MA's), (Start: 7 @34884 has 1 MA's), (Start: 9 @34872 has 3 MA's), (11, 34860), (Start: 14 @34842 has 28 MA's), (15, 34836), (18, 34800), (33, 34659), (36, 34623), (47, 34527), (50, 34509), (62, 34467), (71, 34401), (106, 34092),

Gene: Bradissa_39 Start: 34156, Stop: 33251, Start Num: 14

Candidate Starts for Bradissa_39:

(Start: 6 @34210 has 18 MA's), (Start: 7 @34198 has 1 MA's), (Start: 9 @34186 has 3 MA's), (11, 34174), (Start: 14 @34156 has 28 MA's), (15, 34150), (18, 34114), (33, 33973), (36, 33937), (50, 33823), (62, 33781), (71, 33715), (106, 33403), (109, 33382), (111, 33352),

Gene: Bunnybear_37 Start: 32567, Stop: 31611, Start Num: 6

Candidate Starts for Bunnybear_37:

(Start: 6 @32567 has 18 MA's), (Start: 7 @32555 has 1 MA's), (Start: 9 @32543 has 3 MA's), (11, 32531), (Start: 14 @32513 has 28 MA's), (15, 32507), (18, 32471), (Start: 21 @32450 has 1 MA's), (36, 32294), (106, 31766), (109, 31745), (113, 31703),

Gene: Caterpie_49 Start: 43210, Stop: 42446, Start Num: 10

Candidate Starts for Caterpie_49:

(10, 43210), (Start: 14 @43192 has 28 MA's), (15, 43186), (38, 42961), (52, 42880), (54, 42877), (58, 42868), (69, 42787), (87, 42688), (97, 42592),

Gene: CheeseSpider_47 Start: 33030, Stop: 32239, Start Num: 7

Candidate Starts for CheeseSpider_47:

(Start: 7 @33030 has 1 MA's), (Start: 9 @33018 has 3 MA's), (12, 32997), (20, 32928), (Start: 21 @32922 has 1 MA's), (22, 32916), (27, 32841), (30, 32832), (31, 32826), (37, 32763), (44, 32724), (91, 32442), (96, 32403), (106, 32286), (107, 32271), (110, 32244),

Gene: Clark_43 Start: 32446, Stop: 31643, Start Num: 14

Candidate Starts for Clark_43:

(3, 32560), (4, 32527), (Start: 5 @32503 has 2 MA's), (Start: 9 @32476 has 3 MA's), (Start: 14 @32446 has 28 MA's), (18, 32401), (Start: 21 @32380 has 1 MA's), (22, 32374), (32, 32275), (33, 32269), (51, 32110), (53, 32101), (57, 32089), (73, 31993), (84, 31930), (99, 31792), (107, 31696),

Gene: Crater_52 Start: 35070, Stop: 34318, Start Num: 14

Candidate Starts for Crater_52:

(Start: 14 @35070 has 28 MA's), (22, 35004), (24, 34956), (41, 34809), (48, 34749), (68, 34635), (95, 34461),

Gene: EdnaMode_38 Start: 29990, Stop: 29031, Start Num: 6

Candidate Starts for EdnaMode_38:

(Start: 6 @29990 has 18 MA's), (Start: 7 @29978 has 1 MA's), (Start: 9 @29966 has 3 MA's), (11, 29954), (Start: 14 @29936 has 28 MA's), (15, 29930), (18, 29894), (33, 29753), (36, 29717), (47, 29621), (50, 29603), (62, 29561), (71, 29495), (106, 29186), (109, 29165), (111, 29135),

Gene: EnalisNailo_38 Start: 33720, Stop: 32785, Start Num: 9

Candidate Starts for EnalisNailo_38:

(Start: 6 @33744 has 18 MA's), (Start: 7 @33732 has 1 MA's), (Start: 9 @33720 has 3 MA's), (11, 33708), (Start: 14 @33690 has 28 MA's), (15, 33684), (18, 33648), (33, 33507), (36, 33471), (50, 33357), (62, 33315), (71, 33249), (106, 32937), (109, 32916), (111, 32886),

Gene: Eudoria_44 Start: 34169, Stop: 33210, Start Num: 6

Candidate Starts for Eudoria_44:

(Start: 6 @34169 has 18 MA's), (Start: 7 @34157 has 1 MA's), (Start: 9 @34145 has 3 MA's), (11, 34133), (Start: 14 @34115 has 28 MA's), (15, 34109), (18, 34073), (33, 33932), (36, 33896), (47, 33800), (50, 33782), (62, 33740), (71, 33674), (106, 33365), (109, 33344), (111, 33314),

Gene: Fenry_40 Start: 33564, Stop: 32836, Start Num: 14

Candidate Starts for Fenry_40:

(Start: 8 @33600 has 2 MA's), (Start: 9 @33594 has 3 MA's), (Start: 14 @33564 has 28 MA's), (18, 33528), (22, 33504), (28, 33423), (31, 33408), (76, 33123), (90, 33042), (94, 32997), (98, 32964), (107, 32868), (110, 32841),

Gene: Frickyeah_57 Start: 35160, Stop: 34366, Start Num: 19

Candidate Starts for Frickyeah_57:

(1, 35382), (Start: 14 @35208 has 28 MA's), (19, 35160), (25, 35085), (35, 35019), (42, 34947), (78, 34722), (79, 34716), (82, 34695), (85, 34680), (100, 34548),

Gene: Frokostdame_44 Start: 34314, Stop: 33496, Start Num: 9

Candidate Starts for Frokostdame_44:

(3, 34398), (Start: 5 @34341 has 2 MA's), (Start: 6 @34338 has 18 MA's), (Start: 9 @34314 has 3 MA's), (Start: 14 @34284 has 28 MA's), (16, 34272), (18, 34251), (Start: 21 @34230 has 1 MA's), (23, 34209), (24, 34176), (26, 34155), (46, 33990), (59, 33933), (66, 33858), (80, 33780), (81, 33771), (86, 33744), (89, 33714), (93, 33672), (107, 33528), (110, 33501),

Gene: Gambino_46 Start: 34596, Stop: 33832, Start Num: 8

Candidate Starts for Gambino_46:

(Start: 8 @34596 has 2 MA's), (Start: 9 @34590 has 3 MA's), (Start: 14 @34560 has 28 MA's), (18, 34524), (28, 34419), (31, 34404), (76, 34119), (90, 34038), (94, 33993), (98, 33960), (106, 33879), (107, 33864), (110, 33837),

Gene: Hyzer_49 Start: 37114, Stop: 36215, Start Num: 14

Candidate Starts for Hyzer_49:

(Start: 6 @37168 has 18 MA's), (Start: 9 @37144 has 3 MA's), (11, 37132), (Start: 14 @37114 has 28 MA's), (15, 37108), (18, 37072), (33, 36931), (34, 36925), (36, 36895), (46, 36817), (50, 36781), (62, 36739), (74, 36652), (87, 36568), (102, 36415), (104, 36388), (106, 36370), (111, 36319),

Gene: Invectra_45 Start: 34020, Stop: 33217, Start Num: 14

Candidate Starts for Invectra_45:

(3, 34134), (4, 34101), (Start: 5 @34077 has 2 MA's), (Start: 9 @34050 has 3 MA's), (Start: 14 @34020 has 28 MA's), (18, 33975), (Start: 21 @33954 has 1 MA's), (22, 33948), (32, 33849), (33, 33843), (51, 33684), (53, 33675), (57, 33663), (73, 33567), (84, 33504), (99, 33366), (107, 33270),

Gene: Jalammah_45 Start: 34877, Stop: 34149, Start Num: 14

Candidate Starts for Jalammah_45:

(Start: 8 @34913 has 2 MA's), (Start: 9 @34907 has 3 MA's), (Start: 14 @34877 has 28 MA's), (18, 34841), (22, 34817), (28, 34736), (31, 34721), (76, 34436), (90, 34355), (94, 34310), (98, 34277), (107, 34181), (110, 34154),

Gene: KappaFarmDelta_43 Start: 32505, Stop: 31777, Start Num: 14

Candidate Starts for KappaFarmDelta_43:

(Start: 8 @32541 has 2 MA's), (Start: 9 @32535 has 3 MA's), (Start: 14 @32505 has 28 MA's), (18, 32469), (22, 32445), (28, 32364), (31, 32349), (76, 32064), (90, 31983), (94, 31938), (98, 31905), (107, 31809), (110, 31782),

Gene: Kita_45 Start: 34166, Stop: 33219, Start Num: 7

Candidate Starts for Kita_45:

(Start: 6 @34178 has 18 MA's), (Start: 7 @34166 has 1 MA's), (Start: 9 @34154 has 3 MA's), (11, 34142), (Start: 14 @34124 has 28 MA's), (15, 34118), (18, 34082), (33, 33941), (36, 33905), (47, 33809), (50, 33791), (62, 33749), (71, 33683), (106, 33374), (109, 33353), (111, 33323),

Gene: Kuwabara_49 Start: 35751, Stop: 34855, Start Num: 14

Candidate Starts for Kuwabara_49:

(2, 35874), (Start: 14 @35751 has 28 MA's), (22, 35688), (25, 35628), (31, 35592), (43, 35490), (60, 35385), (63, 35370), (70, 35304), (75, 35280), (83, 35220), (108, 34983), (112, 34941), (114, 34887), (115, 34860),

Gene: Lilas_41 Start: 35455, Stop: 34496, Start Num: 6

Candidate Starts for Lilas_41:

(Start: 6 @35455 has 18 MA's), (Start: 7 @35443 has 1 MA's), (Start: 9 @35431 has 3 MA's), (11, 35419), (Start: 14 @35401 has 28 MA's), (15, 35395), (18, 35359), (33, 35218), (36, 35182), (50, 35068), (62, 35026), (71, 34960), (106, 34648), (109, 34627), (111, 34597),

Gene: LordFarquaad_41 Start: 31283, Stop: 30324, Start Num: 6

Candidate Starts for LordFarquaad_41:

(Start: 6 @31283 has 18 MA's), (Start: 7 @31271 has 1 MA's), (Start: 9 @31259 has 3 MA's), (11, 31247), (Start: 14 @31229 has 28 MA's), (15, 31223), (18, 31187), (33, 31046), (36, 31010), (47, 30914), (50, 30896), (62, 30854), (71, 30788), (106, 30479), (109, 30458), (111, 30428),

Gene: Lysidious_41 Start: 33554, Stop: 32868, Start Num: 21

Candidate Starts for Lysidious_41:

(Start: 7 @33662 has 1 MA's), (Start: 9 @33650 has 3 MA's), (12, 33629), (20, 33560), (Start: 21 @33554 has 1 MA's), (22, 33548), (30, 33464), (31, 33458), (37, 33395), (44, 33356), (91, 33074), (96, 33032), (105, 32930), (106, 32915), (107, 32900), (110, 32873),

Gene: Madavieve_40 Start: 33924, Stop: 33025, Start Num: 14

Candidate Starts for Madavieve_40:

(Start: 6 @33978 has 18 MA's), (Start: 7 @33966 has 1 MA's), (Start: 9 @33954 has 3 MA's), (11, 33942), (Start: 14 @33924 has 28 MA's), (15, 33918), (18, 33882), (Start: 21 @33861 has 1 MA's), (36, 33705), (106, 33180), (109, 33159),

Gene: Malachai_41 Start: 34637, Stop: 33957, Start Num: 14

Candidate Starts for Malachai_41:

(Start: 14 @34637 has 28 MA's), (19, 34589), (45, 34349), (55, 34298), (64, 34253), (72, 34199), (92, 34070),

Gene: Maridalia_45 Start: 34313, Stop: 33357, Start Num: 6

Candidate Starts for Maridalia_45:

(Start: 6 @34313 has 18 MA's), (Start: 7 @34301 has 1 MA's), (Start: 9 @34289 has 3 MA's), (11, 34277), (Start: 14 @34259 has 28 MA's), (15, 34253), (18, 34217), (Start: 21 @34196 has 1 MA's), (36, 34040), (106, 33512), (109, 33491), (113, 33449),

Gene: Mellie_40 Start: 32356, Stop: 31673, Start Num: 14

Candidate Starts for Mellie_40:

(Start: 14 @32356 has 28 MA's), (19, 32308), (45, 32068), (64, 31972), (72, 31918), (92, 31786),

Gene: MichaelScott_44 Start: 33922, Stop: 33119, Start Num: 14

Candidate Starts for MichaelScott_44:

(3, 34036), (4, 34003), (Start: 5 @33979 has 2 MA's), (Start: 9 @33952 has 3 MA's), (Start: 14 @33922 has 28 MA's), (18, 33877), (Start: 21 @33856 has 1 MA's), (22, 33850), (32, 33751), (33, 33745), (51, 33586), (53, 33577), (57, 33565), (73, 33469), (84, 33406), (99, 33268), (107, 33172),

Gene: MissRona_44 Start: 34561, Stop: 33833, Start Num: 14

Candidate Starts for MissRona_44:

(Start: 8 @34597 has 2 MA's), (Start: 9 @34591 has 3 MA's), (Start: 14 @34561 has 28 MA's), (18, 34525), (28, 34420), (31, 34405), (76, 34120), (90, 34039), (94, 33994), (98, 33961), (106, 33880), (107, 33865), (110, 33838),

Gene: Neobush_44 Start: 34163, Stop: 33204, Start Num: 6

Candidate Starts for Neobush_44:

(Start: 6 @34163 has 18 MA's), (Start: 7 @34151 has 1 MA's), (Start: 9 @34139 has 3 MA's), (11, 34127), (Start: 14 @34109 has 28 MA's), (15, 34103), (18, 34067), (33, 33926), (36, 33890), (47, 33794), (50, 33776), (62, 33734), (71, 33668), (106, 33359), (109, 33338), (111, 33308),

Gene: Phistory_54 Start: 35622, Stop: 34870, Start Num: 14

Candidate Starts for Phistory_54:

(Start: 14 @35622 has 28 MA's), (22, 35556), (24, 35508), (41, 35361), (48, 35301), (68, 35187), (95, 35013),

Gene: PhorbesPhlower_36 Start: 28118, Stop: 27366, Start Num: 14

Candidate Starts for PhorbesPhlower_36:

(Start: 14 @28118 has 28 MA's), (22, 28052), (24, 28004), (41, 27857), (48, 27797), (68, 27683), (95, 27509),

Gene: Pickett_37 Start: 28466, Stop: 27507, Start Num: 6

Candidate Starts for Pickett_37:

(Start: 6 @28466 has 18 MA's), (Start: 7 @28454 has 1 MA's), (Start: 9 @28442 has 3 MA's), (11, 28430), (Start: 14 @28412 has 28 MA's), (15, 28406), (18, 28370), (33, 28229), (36, 28193), (47, 28097), (50, 28079), (62, 28037), (71, 27971), (106, 27662), (109, 27641), (111, 27611),

Gene: Polly_41 Start: 33612, Stop: 32653, Start Num: 6

Candidate Starts for Polly_41:

(Start: 6 @33612 has 18 MA's), (Start: 7 @33600 has 1 MA's), (Start: 9 @33588 has 3 MA's), (11, 33576), (Start: 14 @33558 has 28 MA's), (15, 33552), (18, 33516), (33, 33375), (36, 33339), (47, 33243), (50, 33225), (62, 33183), (71, 33117), (106, 32808), (109, 32787), (111, 32757),

Gene: Posh_46 Start: 35855, Stop: 34893, Start Num: 6

Candidate Starts for Posh_46:

(Start: 6 @35855 has 18 MA's), (Start: 7 @35843 has 1 MA's), (Start: 9 @35831 has 3 MA's), (11, 35819), (Start: 14 @35801 has 28 MA's), (15, 35795), (18, 35759), (33, 35618), (34, 35612), (36, 35582), (39, 35552), (50, 35468), (62, 35426), (71, 35360), (106, 35048), (109, 35027), (111, 34997),

Gene: Rizz_44 Start: 33262, Stop: 32429, Start Num: 9

Candidate Starts for Rizz_44:

(3, 33346), (4, 33313), (Start: 5 @33289 has 2 MA's), (Start: 9 @33262 has 3 MA's), (Start: 14 @33232 has 28 MA's), (18, 33187), (Start: 21 @33166 has 1 MA's), (22, 33160), (32, 33061), (33, 33055), (51, 32896), (53, 32887), (57, 32875), (73, 32779), (84, 32716), (99, 32578), (107, 32482),

Gene: Samba_41 Start: 34746, Stop: 34066, Start Num: 14

Candidate Starts for Samba_41:

(Start: 14 @34746 has 28 MA's), (19, 34698), (23, 34668), (45, 34458), (55, 34407), (64, 34362), (72, 34308), (92, 34179),

Gene: Samman98_44 Start: 32579, Stop: 31746, Start Num: 9

Candidate Starts for Samman98_44:

(3, 32663), (4, 32630), (Start: 5 @32606 has 2 MA's), (Start: 9 @32579 has 3 MA's), (Start: 14 @32549 has 28 MA's), (18, 32504), (Start: 21 @32483 has 1 MA's), (22, 32477), (32, 32378), (33, 32372), (51, 32213), (53, 32204), (57, 32192), (73, 32096), (84, 32033), (99, 31895), (107, 31799),

Gene: Sbash_43 Start: 35894, Stop: 35175, Start Num: 14

Candidate Starts for Sbash_43:

(Start: 14 @35894 has 28 MA's), (19, 35846), (23, 35816), (27, 35756), (40, 35651), (56, 35552), (60, 35537), (61, 35534), (64, 35510), (77, 35411), (88, 35339), (100, 35237), (101, 35225), (103, 35201),

Gene: Sekhmet_44 Start: 33506, Stop: 32646, Start Num: 5

Candidate Starts for Sekhmet_44:

(3, 33563), (4, 33530), (Start: 5 @33506 has 2 MA's), (Start: 9 @33479 has 3 MA's), (Start: 14 @33449 has 28 MA's), (18, 33404), (Start: 21 @33383 has 1 MA's), (22, 33377), (32, 33278), (33, 33272), (51, 33113), (53, 33104), (57, 33092), (73, 32996), (84, 32933), (99, 32795), (107, 32699),

Gene: SoilAssassin_39 Start: 31301, Stop: 30342, Start Num: 6

Candidate Starts for SoilAssassin_39:

(Start: 6 @31301 has 18 MA's), (Start: 7 @31289 has 1 MA's), (Start: 9 @31277 has 3 MA's), (11, 31265), (Start: 14 @31247 has 28 MA's), (15, 31241), (18, 31205), (33, 31064), (36, 31028), (47, 30932), (50, 30914), (62, 30872), (71, 30806), (106, 30497), (109, 30476), (111, 30446),

Gene: Suscepit_44 Start: 34170, Stop: 33211, Start Num: 6

Candidate Starts for Suscepit_44:

(Start: 6 @34170 has 18 MA's), (Start: 7 @34158 has 1 MA's), (Start: 9 @34146 has 3 MA's), (11, 34134), (Start: 14 @34116 has 28 MA's), (15, 34110), (18, 34074), (33, 33933), (36, 33897), (47, 33801), (50, 33783), (62, 33741), (71, 33675), (106, 33366), (109, 33345), (111, 33315),

Gene: Tayonia_44 Start: 34169, Stop: 33210, Start Num: 6

Candidate Starts for Tayonia_44:

(Start: 6 @34169 has 18 MA's), (Start: 7 @34157 has 1 MA's), (Start: 9 @34145 has 3 MA's), (11, 34133), (Start: 14 @34115 has 28 MA's), (15, 34109), (18, 34073), (33, 33932), (36, 33896), (47, 33800), (50, 33782), (62, 33740), (71, 33674), (106, 33365), (109, 33344), (111, 33314),

Gene: Trumpet_44 Start: 34170, Stop: 33211, Start Num: 6

Candidate Starts for Trumpet_44:

(Start: 6 @34170 has 18 MA's), (Start: 7 @34158 has 1 MA's), (Start: 9 @34146 has 3 MA's), (11, 34134), (Start: 14 @34116 has 28 MA's), (15, 34110), (18, 34074), (33, 33933), (36, 33897), (47, 33801), (50, 33783), (62, 33741), (71, 33675), (106, 33366), (109, 33345), (111, 33315),

Gene: Tuti_39 Start: 33264, Stop: 32482, Start Num: 14

Candidate Starts for Tuti_39:

(3, 33378), (4, 33345), (Start: 5 @33321 has 2 MA's), (Start: 9 @33294 has 3 MA's), (Start: 14 @33264 has 28 MA's), (18, 33219), (Start: 21 @33198 has 1 MA's), (22, 33192), (32, 33093), (33, 33087), (51, 32928), (53, 32919), (57, 32907), (73, 32811), (84, 32748), (99, 32610), (106, 32529), (107, 32514),

Gene: Utz_36 Start: 33436, Stop: 32756, Start Num: 14

Candidate Starts for Utz_36:

(Start: 14 @33436 has 28 MA's), (19, 33388), (23, 33358), (45, 33148), (55, 33097), (64, 33052), (72, 32998), (92, 32869),

Gene: Wisp_40 Start: 33487, Stop: 32777, Start Num: 14

Candidate Starts for Wisp_40:

(Start: 14 @33487 has 28 MA's), (19, 33439), (24, 33376), (65, 33094), (67, 33064),

Gene: Wocket_42 Start: 32670, Stop: 31942, Start Num: 14

Candidate Starts for Wocket_42:

(Start: 8 @32706 has 2 MA's), (Start: 9 @32700 has 3 MA's), (Start: 14 @32670 has 28 MA's), (18, 32634), (22, 32610), (28, 32529), (31, 32514), (76, 32229), (90, 32148), (94, 32103), (98, 32070), (107, 31974), (110, 31947),

Gene: Yeet412_39 Start: 31302, Stop: 30343, Start Num: 6

Candidate Starts for Yeet412_39:

(Start: 6 @31302 has 18 MA's), (Start: 7 @31290 has 1 MA's), (Start: 9 @31278 has 3 MA's), (11, 31266), (Start: 14 @31248 has 28 MA's), (15, 31242), (18, 31206), (33, 31065), (36, 31029), (47, 30933), (50, 30915), (62, 30873), (71, 30807), (106, 30498), (109, 30477), (111, 30447),

Gene: Yeezy_39 Start: 31783, Stop: 30884, Start Num: 13

Candidate Starts for Yeezy_39:

(Start: 5 @31834 has 2 MA's), (Start: 6 @31831 has 18 MA's), (Start: 9 @31807 has 3 MA's), (Start: 13 @31783 has 1 MA's), (Start: 14 @31777 has 28 MA's), (17, 31753), (29, 31627), (34, 31594), (46, 31489), (49, 31456), (106, 31039), (109, 31018),

Gene: Zameen_44 Start: 34169, Stop: 33210, Start Num: 6

Candidate Starts for Zameen_44:

(Start: 6 @34169 has 18 MA's), (Start: 7 @34157 has 1 MA's), (Start: 9 @34145 has 3 MA's), (11, 34133), (Start: 14 @34115 has 28 MA's), (15, 34109), (18, 34073), (33, 33932), (36, 33896), (47, 33800), (50, 33782), (62, 33740), (71, 33674), (106, 33365), (109, 33344), (111, 33314),

Gene: ZiggyZoo_43 Start: 34707, Stop: 33997, Start Num: 14

Candidate Starts for ZiggyZoo_43:

(Start: 14 @34707 has 28 MA's), (19, 34659), (45, 34419), (64, 34323), (72, 34269),

Gene: Zirinka_41 Start: 34855, Stop: 33950, Start Num: 14

Candidate Starts for Zirinka_41:

(Start: 6 @34909 has 18 MA's), (Start: 7 @34897 has 1 MA's), (Start: 9 @34885 has 3 MA's), (11, 34873), (Start: 14 @34855 has 28 MA's), (15, 34849), (18, 34813), (33, 34672), (36, 34636), (47, 34540), (50, 34522), (62, 34480), (71, 34414), (106, 34105), (109, 34084), (111, 34054),