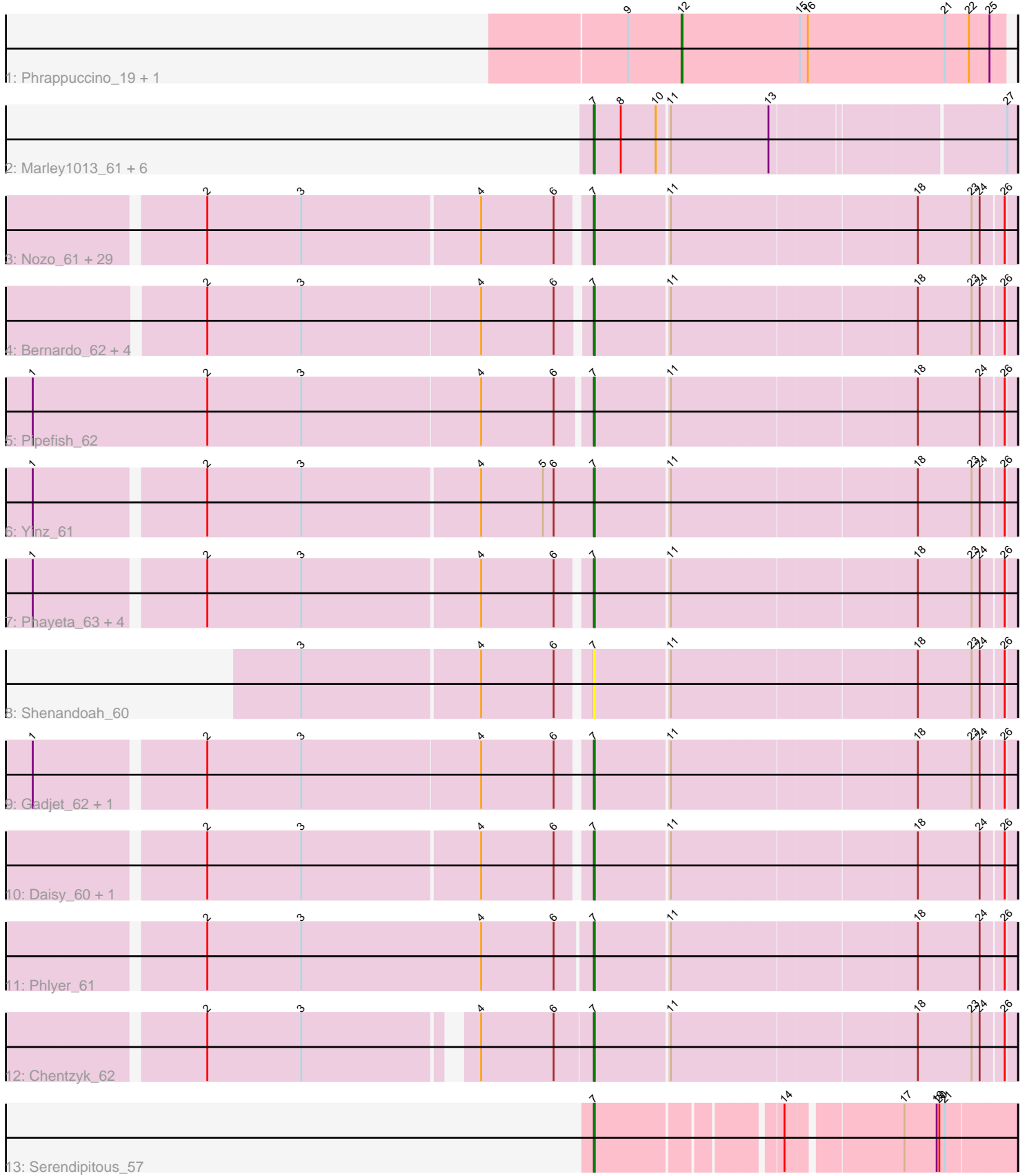


Pham 308650



Note: Tracks are now grouped by subcluster and scaled. Switching in subcluster is indicated by changes in track color. Track scale is now set by default to display the region 30 bp upstream of start 1 to 30 bp downstream of the last possible start. If this default region is judged to be packed too tightly with annotated starts, the track will be further scaled to only show that region of the ORF with annotated starts. This action will be indicated by adding "Zoomed" to the title. For starts, yellow indicates the location of called starts comprised solely of Glimmer/GeneMark auto-annotations, green indicates the location of called starts with at least 1 manual gene annotation.

Pham 308650 Report

This analysis was run 06/27/26 on database version 652.

Pham number 308650 has 59 members, 5 are drafts.

Phages represented in each track:

- Track 1 : Phrappuccino_19, Settecandela_19
- Track 2 : Marley1013_61, LestyG_59, Tydolla_58, Neos5_60, Yahalom_59, Baloo_60, Morty007_60
- Track 3 : Nozo_61, MmasiCarm_62, Obutu_62, Heathcliff_61, Jackstina_57, Akoma_61, GlenHope_62, Chandler_61, SynergyX_61, Compostia_61, ChaChing_61, Mulaychimus_62, RagingRooster_60, Corofin_61, OrangeOswald_61, Athena_63, Chalmers_60, Gervas_62, RomaT_61, HarveySr_60, Deenasa_61, Philly_60, Phaedrus_57, Devonte_60, Audrey_61, Kamiyu_61, Olivio_61, Glubnar_62, Rita1961_62, SlippinJimmy_63
- Track 4 : Bernardo_62, Mortcellus_61, Ben11_61, TinyTerror_62, Kronus_61
- Track 5 : Pipefish_62
- Track 6 : Yinz_61
- Track 7 : Phayeta_63, Briakila_60, SwainyDoc_62, Casbah_61, Marlia_62
- Track 8 : Shenandoah_60
- Track 9 : Gadget_62, Halfpint_60
- Track 10 : Daisy_60, Abinghost_61
- Track 11 : Phlyer_61
- Track 12 : Chentzyk_62
- Track 13 : Serendipitous_57

Summary of Final Annotations (See graph section above for start numbers):

The start number called the most often in the published annotations is 7, it was called in 52 of the 54 non-draft genes in the pham.

Genes that call this "Most Annotated" start:

- Abinghost_61, Akoma_61, Athena_63, Audrey_61, Baloo_60, Ben11_61, Bernardo_62, Briakila_60, Casbah_61, ChaChing_61, Chalmers_60, Chandler_61, Chentzyk_62, Compostia_61, Corofin_61, Daisy_60, Deenasa_61, Devonte_60, Gadget_62, Gervas_62, GlenHope_62, Glubnar_62, Halfpint_60, HarveySr_60, Heathcliff_61, Jackstina_57, Kamiyu_61, Kronus_61, LestyG_59, Marley1013_61, Marlia_62, MmasiCarm_62, Mortcellus_61, Morty007_60, Mulaychimus_62, Neos5_60, Nozo_61, Obutu_62, Olivio_61, OrangeOswald_61, Phaedrus_57, Phayeta_63, Philly_60, Phlyer_61, Pipefish_62, RagingRooster_60, Rita1961_62,

RomaT_61, Serendipitous_57, Shenandoah_60, SlippinJimmy_63, SwainyDoc_62, SynergyX_61, TinyTerror_62, Tydolla_58, Yahalom_59, Yinz_61,

Genes that have the "Most Annotated" start but do not call it:

-

Genes that do not have the "Most Annotated" start:

- Phrappuccino_19, Settecandela_19,

Summary by start number:

Start 7:

- Found in 57 of 59 (96.6%) of genes in pham
- Manual Annotations of this start: 52 of 54
- Called 100.0% of time when present
- Phage (with cluster) where this start called: Abinghost_61 (B3), Akoma_61 (B3), Athena_63 (B3), Audrey_61 (B3), Baloo_60 (B3), Ben11_61 (B3), Bernardo_62 (B3), Briakila_60 (B3), Casbah_61 (B3), ChaChing_61 (B3), Chalmers_60 (B3), Chandler_61 (B3), Chentzyk_62 (B3), Compostia_61 (B3), Corofin_61 (B3), Daisy_60 (B3), Deenasa_61 (B3), Devonte_60 (B3), Gadget_62 (B3), Gervas_62 (B3), GlenHope_62 (B3), Glubnar_62 (B3), Halfpint_60 (B3), HarveySr_60 (B3), Heathcliff_61 (B3), Jackstina_57 (B3), Kamiyu_61 (B3), Kronus_61 (B3), LestyG_59 (B3), Marley1013_61 (B3), Marlia_62 (B3), MmasiCarm_62 (B3), Mortcellus_61 (B3), Morty007_60 (B3), Mulaychimus_62 (B3), Neos5_60 (B3), Nozo_61 (B3), Obutu_62 (B3), Olivio_61 (B3), OrangeOswald_61 (B3), Phaedrus_57 (B3), Phayeta_63 (B3), Philly_60 (B3), Phlyer_61 (B3), Pipefish_62 (B3), RagingRooster_60 (B3), Rita1961_62 (B3), RomaT_61 (B3), Serendipitous_57 (B5), Shenandoah_60 (B3), SlippinJimmy_63 (B3), SwainyDoc_62 (B3), SynergyX_61 (B3), TinyTerror_62 (B3), Tydolla_58 (B3), Yahalom_59 (B3), Yinz_61 (B3),

Start 12:

- Found in 2 of 59 (3.4%) of genes in pham
- Manual Annotations of this start: 2 of 54
- Called 100.0% of time when present
- Phage (with cluster) where this start called: Phrappuccino_19 (AA), Settecandela_19 (AA),

Summary by clusters:

There are 3 clusters represented in this pham: AA, B5, B3,

Info for manual annotations of cluster AA:

- Start number 12 was manually annotated 2 times for cluster AA.

Info for manual annotations of cluster B3:

- Start number 7 was manually annotated 51 times for cluster B3.

Info for manual annotations of cluster B5:

- Start number 7 was manually annotated 1 time for cluster B5.

Gene Information:

Gene: Abinghost_61 Start: 54489, Stop: 54043, Start Num: 7

Candidate Starts for Abinghost_61:

(2, 54903), (3, 54798), (4, 54603), (6, 54522), (Start: 7 @54489 has 52 MA's), (11, 54408), (18, 54147), (24, 54078), (26, 54054),

Gene: Akoma_61 Start: 54537, Stop: 54091, Start Num: 7

Candidate Starts for Akoma_61:

(2, 54951), (3, 54846), (4, 54651), (6, 54570), (Start: 7 @54537 has 52 MA's), (11, 54456), (18, 54195), (23, 54135), (24, 54126), (26, 54102),

Gene: Athena_63 Start: 55272, Stop: 54826, Start Num: 7

Candidate Starts for Athena_63:

(2, 55686), (3, 55581), (4, 55386), (6, 55305), (Start: 7 @55272 has 52 MA's), (11, 55191), (18, 54930), (23, 54870), (24, 54861), (26, 54837),

Gene: Audrey_61 Start: 54528, Stop: 54082, Start Num: 7

Candidate Starts for Audrey_61:

(2, 54942), (3, 54837), (4, 54642), (6, 54561), (Start: 7 @54528 has 52 MA's), (11, 54447), (18, 54186), (23, 54126), (24, 54117), (26, 54093),

Gene: Baloo_60 Start: 54388, Stop: 53945, Start Num: 7

Candidate Starts for Baloo_60:

(Start: 7 @54388 has 52 MA's), (8, 54358), (10, 54319), (11, 54307), (13, 54202), (27, 53956),

Gene: Ben11_61 Start: 54743, Stop: 54297, Start Num: 7

Candidate Starts for Ben11_61:

(2, 55157), (3, 55052), (4, 54857), (6, 54776), (Start: 7 @54743 has 52 MA's), (11, 54662), (18, 54401), (23, 54341), (24, 54332), (26, 54308),

Gene: Bernardo_62 Start: 54880, Stop: 54434, Start Num: 7

Candidate Starts for Bernardo_62:

(2, 55297), (3, 55192), (4, 54994), (6, 54913), (Start: 7 @54880 has 52 MA's), (11, 54799), (18, 54538), (23, 54478), (24, 54469), (26, 54445),

Gene: Briakila_60 Start: 54501, Stop: 54055, Start Num: 7

Candidate Starts for Briakila_60:

(1, 55095), (2, 54915), (3, 54810), (4, 54615), (6, 54534), (Start: 7 @54501 has 52 MA's), (11, 54420), (18, 54159), (23, 54099), (24, 54090), (26, 54066),

Gene: Casbah_61 Start: 54846, Stop: 54400, Start Num: 7

Candidate Starts for Casbah_61:

(1, 55440), (2, 55260), (3, 55155), (4, 54960), (6, 54879), (Start: 7 @54846 has 52 MA's), (11, 54765), (18, 54504), (23, 54444), (24, 54435), (26, 54411),

Gene: ChaChing_61 Start: 54548, Stop: 54102, Start Num: 7

Candidate Starts for ChaChing_61:

(2, 54962), (3, 54857), (4, 54662), (6, 54581), (Start: 7 @54548 has 52 MA's), (11, 54467), (18, 54206), (23, 54146), (24, 54137), (26, 54113),

Gene: Chalmers_60 Start: 54987, Stop: 54541, Start Num: 7

Candidate Starts for Chalmers_60:

(2, 55401), (3, 55296), (4, 55101), (6, 55020), (Start: 7 @54987 has 52 MA's), (11, 54906), (18, 54645), (23, 54585), (24, 54576), (26, 54552),

Gene: Chandler_61 Start: 55316, Stop: 54870, Start Num: 7

Candidate Starts for Chandler_61:

(2, 55730), (3, 55625), (4, 55430), (6, 55349), (Start: 7 @55316 has 52 MA's), (11, 55235), (18, 54974), (23, 54914), (24, 54905), (26, 54881),

Gene: Chentzyk_62 Start: 55268, Stop: 54822, Start Num: 7

Candidate Starts for Chentzyk_62:

(2, 55667), (3, 55562), (4, 55391), (6, 55310), (Start: 7 @55268 has 52 MA's), (11, 55187), (18, 54926), (23, 54866), (24, 54857), (26, 54833),

Gene: Compostia_61 Start: 54935, Stop: 54489, Start Num: 7

Candidate Starts for Compostia_61:

(2, 55349), (3, 55244), (4, 55049), (6, 54968), (Start: 7 @54935 has 52 MA's), (11, 54854), (18, 54593), (23, 54533), (24, 54524), (26, 54500),

Gene: Corofin_61 Start: 54559, Stop: 54113, Start Num: 7

Candidate Starts for Corofin_61:

(2, 54973), (3, 54868), (4, 54673), (6, 54592), (Start: 7 @54559 has 52 MA's), (11, 54478), (18, 54217), (23, 54157), (24, 54148), (26, 54124),

Gene: Daisy_60 Start: 54092, Stop: 53646, Start Num: 7

Candidate Starts for Daisy_60:

(2, 54506), (3, 54401), (4, 54206), (6, 54125), (Start: 7 @54092 has 52 MA's), (11, 54011), (18, 53750), (24, 53681), (26, 53657),

Gene: Deenasa_61 Start: 55397, Stop: 54951, Start Num: 7

Candidate Starts for Deenasa_61:

(2, 55811), (3, 55706), (4, 55511), (6, 55430), (Start: 7 @55397 has 52 MA's), (11, 55316), (18, 55055), (23, 54995), (24, 54986), (26, 54962),

Gene: Devonte_60 Start: 54171, Stop: 53725, Start Num: 7

Candidate Starts for Devonte_60:

(2, 54585), (3, 54480), (4, 54285), (6, 54204), (Start: 7 @54171 has 52 MA's), (11, 54090), (18, 53829), (23, 53769), (24, 53760), (26, 53736),

Gene: Gadjet_62 Start: 54864, Stop: 54418, Start Num: 7

Candidate Starts for Gadjet_62:

(1, 55461), (2, 55281), (3, 55176), (4, 54978), (6, 54897), (Start: 7 @54864 has 52 MA's), (11, 54783), (18, 54522), (23, 54462), (24, 54453), (26, 54429),

Gene: Gervas_62 Start: 54953, Stop: 54507, Start Num: 7

Candidate Starts for Gervas_62:

(2, 55367), (3, 55262), (4, 55067), (6, 54986), (Start: 7 @54953 has 52 MA's), (11, 54872), (18, 54611), (23, 54551), (24, 54542), (26, 54518),

Gene: GlenHope_62 Start: 54527, Stop: 54081, Start Num: 7

Candidate Starts for GlenHope_62:

(2, 54941), (3, 54836), (4, 54641), (6, 54560), (Start: 7 @54527 has 52 MA's), (11, 54446), (18, 54185), (23, 54125), (24, 54116), (26, 54092),

Gene: Glubnar_62 Start: 54433, Stop: 53987, Start Num: 7

Candidate Starts for Glubnar_62:

(2, 54847), (3, 54742), (4, 54547), (6, 54466), (Start: 7 @54433 has 52 MA's), (11, 54352), (18, 54091), (23, 54031), (24, 54022), (26, 53998),

Gene: Halfpint_60 Start: 54267, Stop: 53821, Start Num: 7

Candidate Starts for Halfpint_60:

(1, 54864), (2, 54684), (3, 54579), (4, 54384), (6, 54303), (Start: 7 @54267 has 52 MA's), (11, 54186), (18, 53925), (23, 53865), (24, 53856), (26, 53832),

Gene: HarveySr_60 Start: 54117, Stop: 53671, Start Num: 7

Candidate Starts for HarveySr_60:

(2, 54531), (3, 54426), (4, 54231), (6, 54150), (Start: 7 @54117 has 52 MA's), (11, 54036), (18, 53775), (23, 53715), (24, 53706), (26, 53682),

Gene: Heathcliff_61 Start: 54494, Stop: 54048, Start Num: 7

Candidate Starts for Heathcliff_61:

(2, 54908), (3, 54803), (4, 54608), (6, 54527), (Start: 7 @54494 has 52 MA's), (11, 54413), (18, 54152), (23, 54092), (24, 54083), (26, 54059),

Gene: Jackstina_57 Start: 54419, Stop: 53973, Start Num: 7

Candidate Starts for Jackstina_57:

(2, 54833), (3, 54728), (4, 54533), (6, 54452), (Start: 7 @54419 has 52 MA's), (11, 54338), (18, 54077), (23, 54017), (24, 54008), (26, 53984),

Gene: Kamiyu_61 Start: 54496, Stop: 54050, Start Num: 7

Candidate Starts for Kamiyu_61:

(2, 54910), (3, 54805), (4, 54610), (6, 54529), (Start: 7 @54496 has 52 MA's), (11, 54415), (18, 54154), (23, 54094), (24, 54085), (26, 54061),

Gene: Kronus_61 Start: 55581, Stop: 55135, Start Num: 7

Candidate Starts for Kronus_61:

(2, 55995), (3, 55890), (4, 55695), (6, 55614), (Start: 7 @55581 has 52 MA's), (11, 55500), (18, 55239), (23, 55179), (24, 55170), (26, 55146),

Gene: LestyG_59 Start: 54041, Stop: 53598, Start Num: 7

Candidate Starts for LestyG_59:

(Start: 7 @54041 has 52 MA's), (8, 54011), (10, 53972), (11, 53960), (13, 53855), (27, 53609),

Gene: Marley1013_61 Start: 55239, Stop: 54796, Start Num: 7

Candidate Starts for Marley1013_61:

(Start: 7 @55239 has 52 MA's), (8, 55209), (10, 55170), (11, 55158), (13, 55053), (27, 54807),

Gene: Marlia_62 Start: 54957, Stop: 54511, Start Num: 7

Candidate Starts for Marlia_62:

(1, 55551), (2, 55371), (3, 55266), (4, 55071), (6, 54990), (Start: 7 @54957 has 52 MA's), (11, 54876), (18, 54615), (23, 54555), (24, 54546), (26, 54522),

Gene: MmasiCarm_62 Start: 54941, Stop: 54495, Start Num: 7

Candidate Starts for MmasiCarm_62:

(2, 55355), (3, 55250), (4, 55055), (6, 54974), (Start: 7 @54941 has 52 MA's), (11, 54860), (18, 54599), (23, 54539), (24, 54530), (26, 54506),

Gene: Mortcellus_61 Start: 55596, Stop: 55150, Start Num: 7

Candidate Starts for Mortcellus_61:

(2, 56013), (3, 55908), (4, 55713), (6, 55632), (Start: 7 @55596 has 52 MA's), (11, 55515), (18, 55254), (23, 55194), (24, 55185), (26, 55161),

Gene: Morty007_60 Start: 55239, Stop: 54796, Start Num: 7

Candidate Starts for Morty007_60:

(Start: 7 @55239 has 52 MA's), (8, 55209), (10, 55170), (11, 55158), (13, 55053), (27, 54807),

Gene: Mulaychimus_62 Start: 54958, Stop: 54512, Start Num: 7

Candidate Starts for Mulaychimus_62:

(2, 55372), (3, 55267), (4, 55072), (6, 54991), (Start: 7 @54958 has 52 MA's), (11, 54877), (18, 54616), (23, 54556), (24, 54547), (26, 54523),

Gene: Neos5_60 Start: 54701, Stop: 54258, Start Num: 7

Candidate Starts for Neos5_60:

(Start: 7 @54701 has 52 MA's), (8, 54671), (10, 54632), (11, 54620), (13, 54515), (27, 54269),

Gene: Nozo_61 Start: 55295, Stop: 54849, Start Num: 7

Candidate Starts for Nozo_61:

(2, 55709), (3, 55604), (4, 55409), (6, 55328), (Start: 7 @55295 has 52 MA's), (11, 55214), (18, 54953), (23, 54893), (24, 54884), (26, 54860),

Gene: Obutu_62 Start: 54894, Stop: 54448, Start Num: 7

Candidate Starts for Obutu_62:

(2, 55308), (3, 55203), (4, 55008), (6, 54927), (Start: 7 @54894 has 52 MA's), (11, 54813), (18, 54552), (23, 54492), (24, 54483), (26, 54459),

Gene: Olivio_61 Start: 54753, Stop: 54307, Start Num: 7

Candidate Starts for Olivio_61:

(2, 55167), (3, 55062), (4, 54867), (6, 54786), (Start: 7 @54753 has 52 MA's), (11, 54672), (18, 54411), (23, 54351), (24, 54342), (26, 54318),

Gene: OrangeOswald_61 Start: 54536, Stop: 54090, Start Num: 7

Candidate Starts for OrangeOswald_61:

(2, 54950), (3, 54845), (4, 54650), (6, 54569), (Start: 7 @54536 has 52 MA's), (11, 54455), (18, 54194), (23, 54134), (24, 54125), (26, 54101),

Gene: Phaedrus_57 Start: 53969, Stop: 53523, Start Num: 7

Candidate Starts for Phaedrus_57:

(2, 54383), (3, 54278), (4, 54083), (6, 54002), (Start: 7 @53969 has 52 MA's), (11, 53888), (18, 53627), (23, 53567), (24, 53558), (26, 53534),

Gene: Phayeta_63 Start: 54796, Stop: 54350, Start Num: 7

Candidate Starts for Phayeta_63:

(1, 55390), (2, 55210), (3, 55105), (4, 54910), (6, 54829), (Start: 7 @54796 has 52 MA's), (11, 54715), (18, 54454), (23, 54394), (24, 54385), (26, 54361),

Gene: Philly_60 Start: 54356, Stop: 53910, Start Num: 7

Candidate Starts for Philly_60:

(2, 54770), (3, 54665), (4, 54470), (6, 54389), (Start: 7 @54356 has 52 MA's), (11, 54275), (18, 54014), (23, 53954), (24, 53945), (26, 53921),

Gene: Phlyer_61 Start: 55238, Stop: 54792, Start Num: 7

Candidate Starts for Phlyer_61:

(2, 55664), (3, 55559), (4, 55358), (6, 55277), (Start: 7 @55238 has 52 MA's), (11, 55157), (18, 54896), (24, 54827), (26, 54803),

Gene: Phrappuccino_19 Start: 11710, Stop: 11354, Start Num: 12

Candidate Starts for Phrappuccino_19:

(9, 11770), (Start: 12 @11710 has 2 MA's), (15, 11578), (16, 11569), (21, 11416), (22, 11389), (25, 11368),

Gene: Pipefish_62 Start: 55267, Stop: 54821, Start Num: 7

Candidate Starts for Pipefish_62:

(1, 55882), (2, 55687), (3, 55582), (4, 55384), (6, 55303), (Start: 7 @55267 has 52 MA's), (11, 55186), (18, 54925), (24, 54856), (26, 54832),

Gene: RagingRooster_60 Start: 54184, Stop: 53738, Start Num: 7

Candidate Starts for RagingRooster_60:

(2, 54598), (3, 54493), (4, 54298), (6, 54217), (Start: 7 @54184 has 52 MA's), (11, 54103), (18, 53842), (23, 53782), (24, 53773), (26, 53749),

Gene: Rita1961_62 Start: 54894, Stop: 54448, Start Num: 7

Candidate Starts for Rita1961_62:

(2, 55308), (3, 55203), (4, 55008), (6, 54927), (Start: 7 @54894 has 52 MA's), (11, 54813), (18, 54552), (23, 54492), (24, 54483), (26, 54459),

Gene: RomaT_61 Start: 55093, Stop: 54647, Start Num: 7

Candidate Starts for RomaT_61:

(2, 55507), (3, 55402), (4, 55207), (6, 55126), (Start: 7 @55093 has 52 MA's), (11, 55012), (18, 54751), (23, 54691), (24, 54682), (26, 54658),

Gene: Serendipitous_57 Start: 54156, Stop: 53737, Start Num: 7

Candidate Starts for Serendipitous_57:

(Start: 7 @54156 has 52 MA's), (14, 53976), (17, 53859), (19, 53823), (20, 53820), (21, 53814),

Gene: Settecandela_19 Start: 11710, Stop: 11354, Start Num: 12

Candidate Starts for Settecandela_19:

(9, 11770), (Start: 12 @11710 has 2 MA's), (15, 11578), (16, 11569), (21, 11416), (22, 11389), (25, 11368),

Gene: Shenandoah_60 Start: 54161, Stop: 53715, Start Num: 7

Candidate Starts for Shenandoah_60:

(3, 54470), (4, 54275), (6, 54194), (Start: 7 @54161 has 52 MA's), (11, 54080), (18, 53819), (23, 53759), (24, 53750), (26, 53726),

Gene: SlippinJimmy_63 Start: 55694, Stop: 55248, Start Num: 7

Candidate Starts for SlippinJimmy_63:

(2, 56108), (3, 56003), (4, 55808), (6, 55727), (Start: 7 @55694 has 52 MA's), (11, 55613), (18, 55352), (23, 55292), (24, 55283), (26, 55259),

Gene: SwainyDoc_62 Start: 54923, Stop: 54477, Start Num: 7

Candidate Starts for SwainyDoc_62:

(1, 55517), (2, 55337), (3, 55232), (4, 55037), (6, 54956), (Start: 7 @54923 has 52 MA's), (11, 54842), (18, 54581), (23, 54521), (24, 54512), (26, 54488),

Gene: SynergyX_61 Start: 54533, Stop: 54087, Start Num: 7

Candidate Starts for SynergyX_61:

(2, 54947), (3, 54842), (4, 54647), (6, 54566), (Start: 7 @54533 has 52 MA's), (11, 54452), (18, 54191), (23, 54131), (24, 54122), (26, 54098),

Gene: TinyTerror_62 Start: 54954, Stop: 54508, Start Num: 7

Candidate Starts for TinyTerror_62:

(2, 55368), (3, 55263), (4, 55068), (6, 54987), (Start: 7 @54954 has 52 MA's), (11, 54873), (18, 54612), (23, 54552), (24, 54543), (26, 54519),

Gene: Tydolla_58 Start: 54593, Stop: 54150, Start Num: 7

Candidate Starts for Tydolla_58:

(Start: 7 @54593 has 52 MA's), (8, 54563), (10, 54524), (11, 54512), (13, 54407), (27, 54161),

Gene: Yahalom_59 Start: 54367, Stop: 53924, Start Num: 7

Candidate Starts for Yahalom_59:

(Start: 7 @54367 has 52 MA's), (8, 54337), (10, 54298), (11, 54286), (13, 54181), (27, 53935),

Gene: Yinz_61 Start: 54389, Stop: 53943, Start Num: 7

Candidate Starts for Yinz_61:

(1, 54995), (2, 54815), (3, 54710), (4, 54515), (5, 54446), (6, 54434), (Start: 7 @54389 has 52 MA's), (11, 54308), (18, 54047), (23, 53987), (24, 53978), (26, 53954),