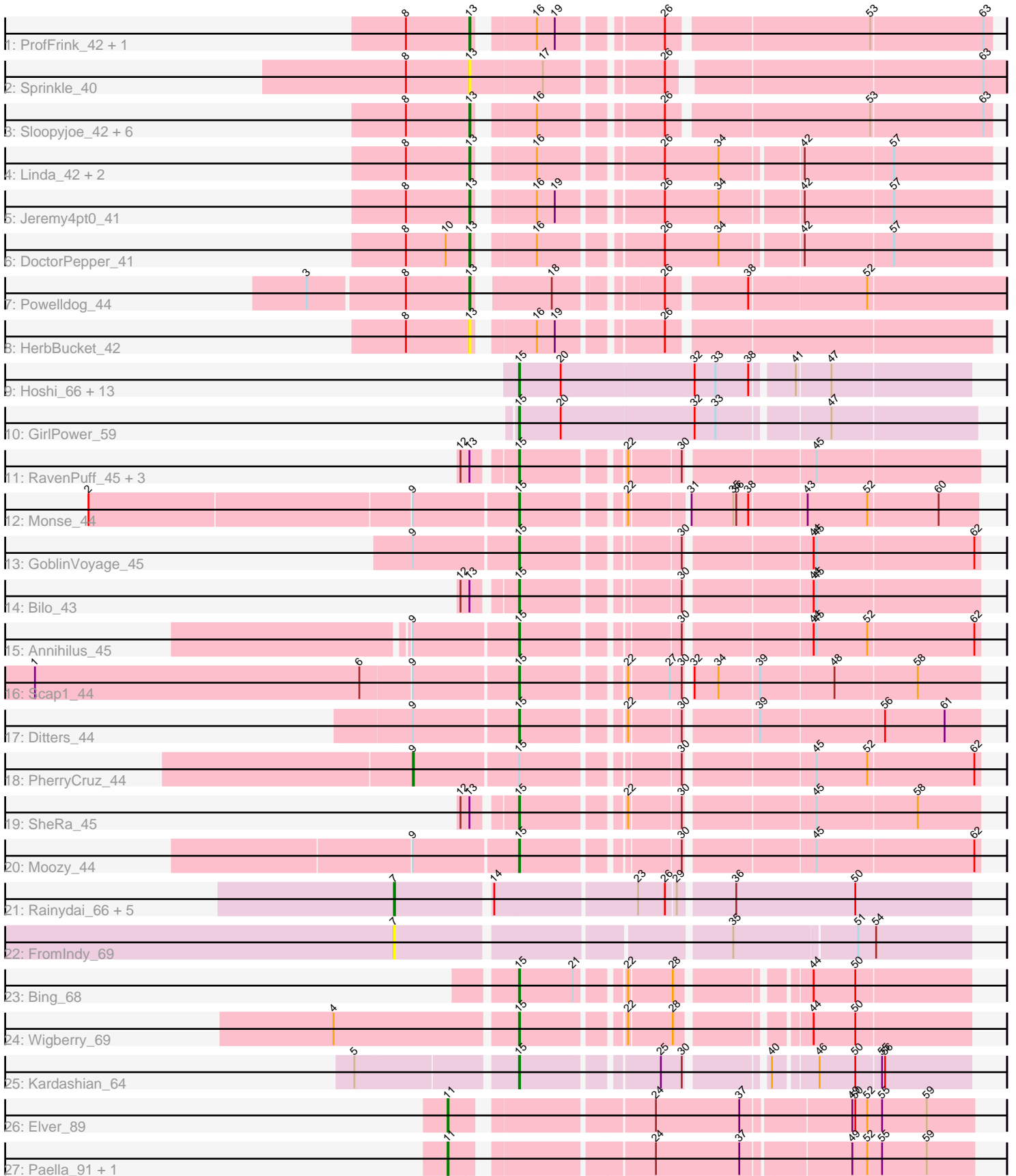


Pham 308668



Note: Tracks are now grouped by subcluster and scaled. Switching in subcluster is indicated by changes in track color. Track scale is now set by default to display the region 30 bp upstream of start 1 to 30 bp downstream of the last possible start. If this default region is judged to be packed too tightly with annotated starts, the track will be further scaled to only show that region of the ORF with annotated starts. This action will be indicated by adding "Zoomed" to the title. For starts, yellow indicates the location of called starts comprised solely of Glimmer/GeneMark auto-annotations, green indicates the location of called starts with at least 1 manual gene annotation.

Pham 308668 Report

This analysis was run 06/27/26 on database version 652.

Pham number 308668 has 58 members, 5 are drafts.

Phages represented in each track:

- Track 1 : ProfFrink_42, Egad_42
- Track 2 : Sprinkle_40
- Track 3 : Sloopyjoe_42, BronxBay_42, StarLord_42, Shiba_41, MrAaronian_42, Michelle_42, Djungelskog_42
- Track 4 : Linda_42, Stayer_42, Salk_42
- Track 5 : Jeremy4pt0_41
- Track 6 : DoctorPepper_41
- Track 7 : PowellDog_44
- Track 8 : HerbBucket_42
- Track 9 : Hoshi_66, Namu_66, IceWarrior_64, Indigenous_67, CherryBlossom_65, Rima_66, TaidaOne_67, Meibysrarus_63, TonyStarch_64, OlympicHelado_67, Spectropatronm_65, FidgetOrca_67, Jaylociraptor_65, Maya_65
- Track 10 : GirlPower_59
- Track 11 : RavenPuff_45, HotFries_44, Sangak_44, Doxi13_46
- Track 12 : Monse_44
- Track 13 : GoblinVoyage_45
- Track 14 : Bilo_43
- Track 15 : Annihilus_45
- Track 16 : Scap1_44
- Track 17 : Ditters_44
- Track 18 : PherryCruz_44
- Track 19 : SheRa_45
- Track 20 : Moozy_44
- Track 21 : Rainydai_66, CricKo_68, Miek_64, Thiqqums_68, Regigigas_68, SendItCS_63
- Track 22 : FromIndy_69
- Track 23 : Bing_68
- Track 24 : Wigberry_69
- Track 25 : Kardashian_64
- Track 26 : Elver_89
- Track 27 : Paella_91, Qui_91

Summary of Final Annotations (See graph section above for start numbers):

The start number called the most often in the published annotations is 15, it was called in 29 of the 53 non-draft genes in the pham.

Genes that call this "Most Annotated" start:

- Annihilus_45, Bilo_43, Bing_68, CherryBlossom_65, Ditters_44, Doxi13_46, FidgetOrca_67, GirlPower_59, GoblinVoyage_45, Hoshi_66, HotFries_44, IceWarrior_64, Indigenous_67, Jaylociraptor_65, Kardashian_64, Maya_65, Meibysrarus_63, Monse_44, Moozy_44, Namu_66, OlympicHelado_67, RavenPuff_45, Rima_66, Sangak_44, Scap1_44, SheRa_45, Spectropatronm_65, TaidaOne_67, TonyStarch_64, Wigberry_69,

Genes that have the "Most Annotated" start but do not call it:

- PherryCruz_44,

Genes that do not have the "Most Annotated" start:

- BronxBay_42, CricKo_68, Djungelskog_42, DoctorPepper_41, Egad_42, Elver_89, FromIndy_69, HerbBucket_42, Jeremy4pt0_41, Linda_42, Michelle_42, Miek_64, MrAaronian_42, Paella_91, Powellldog_44, ProfFrink_42, Qui_91, Rainydai_66, Regigigas_68, Salk_42, SendItCS_63, Shiba_41, Sloopyjoe_42, Sprinkle_40, StarLord_42, Stayer_42, Thiqqums_68,

Summary by start number:

Start 7:

- Found in 7 of 58 (12.1%) of genes in pham
- Manual Annotations of this start: 5 of 53
- Called 100.0% of time when present
- Phage (with cluster) where this start called: CricKo_68 (BI4), FromIndy_69 (BI4), Miek_64 (BI4), Rainydai_66 (BI4), Regigigas_68 (BI4), SendItCS_63 (BI4), Thiqqums_68 (BI4),

Start 9:

- Found in 7 of 58 (12.1%) of genes in pham
- Manual Annotations of this start: 1 of 53
- Called 14.3% of time when present
- Phage (with cluster) where this start called: PherryCruz_44 (BI2),

Start 11:

- Found in 3 of 58 (5.2%) of genes in pham
- Manual Annotations of this start: 3 of 53
- Called 100.0% of time when present
- Phage (with cluster) where this start called: Elver_89 (FK), Paella_91 (FK), Qui_91 (FK),

Start 13:

- Found in 23 of 58 (39.7%) of genes in pham
- Manual Annotations of this start: 15 of 53
- Called 73.9% of time when present
- Phage (with cluster) where this start called: BronxBay_42 (AW), Djungelskog_42 (AW), DoctorPepper_41 (AW), Egad_42 (AW), HerbBucket_42 (AW), Jeremy4pt0_41 (AW), Linda_42 (AW), Michelle_42 (AW), MrAaronian_42 (AW), Powellldog_44 (AW), ProfFrink_42 (AW), Salk_42 (AW), Shiba_41 (AW), Sloopyjoe_42 (AW), Sprinkle_40 (AW), StarLord_42 (AW), Stayer_42 (AW),

Start 15:

- Found in 31 of 58 (53.4%) of genes in pham
- Manual Annotations of this start: 29 of 53
- Called 96.8% of time when present
- Phage (with cluster) where this start called: Annihilus_45 (BI2), Bilo_43 (BI2), Bing_68 (BI5), CherryBlossom_65 (BI1), Ditters_44 (BI2), Doxi13_46 (BI2), FidgetOrca_67 (BI1), GirlPower_59 (BI1), GoblinVoyage_45 (BI2), Hoshi_66 (BI1), HotFries_44 (BI2), IceWarrior_64 (BI1), Indigenous_67 (BI1), Jaylociraptor_65 (BI1), Kardashian_64 (BI6), Maya_65 (BI1), Meibysrarus_63 (BI1), Monse_44 (BI2), Moozy_44 (BI2), Namu_66 (BI1), OlympicHelado_67 (BI1), RavenPuff_45 (BI2), Rima_66 (BI1), Sangak_44 (BI2), Scap1_44 (BI2), SheRa_45 (BI2), Spectropatronm_65 (BI1), TaidaOne_67 (BI1), TonyStarch_64 (BI1), Wigberry_69 (BI5),

Summary by clusters:

There are 7 clusters represented in this pham: BI5, AW, BI6, BI4, FK, BI2, BI1,

Info for manual annotations of cluster AW:

- Start number 13 was manually annotated 15 times for cluster AW.

Info for manual annotations of cluster BI1:

- Start number 15 was manually annotated 15 times for cluster BI1.

Info for manual annotations of cluster BI2:

- Start number 9 was manually annotated 1 time for cluster BI2.
- Start number 15 was manually annotated 11 times for cluster BI2.

Info for manual annotations of cluster BI4:

- Start number 7 was manually annotated 5 times for cluster BI4.

Info for manual annotations of cluster BI5:

- Start number 15 was manually annotated 2 times for cluster BI5.

Info for manual annotations of cluster BI6:

- Start number 15 was manually annotated 1 time for cluster BI6.

Info for manual annotations of cluster FK:

- Start number 11 was manually annotated 3 times for cluster FK.

Gene Information:

Gene: Annihilus_45 Start: 34571, Stop: 34990, Start Num: 15

Candidate Starts for Annihilus_45:

(Start: 9 @34469 has 1 MA's), (Start: 15 @34571 has 29 MA's), (30, 34709), (44, 34826), (45, 34829), (52, 34880), (62, 34985),

Gene: Bilo_43 Start: 34722, Stop: 35141, Start Num: 15

Candidate Starts for Bilo_43:

(12, 34677), (Start: 13 @34686 has 15 MA's), (Start: 15 @34722 has 29 MA's), (30, 34860), (44, 34977), (45, 34980),

Gene: Bing_68 Start: 43846, Stop: 44244, Start Num: 15

Candidate Starts for Bing_68:

(Start: 15 @43846 has 29 MA's), (21, 43900), (22, 43936), (28, 43978), (44, 44089), (50, 44131),

Gene: BronxBay_42 Start: 30407, Stop: 30874, Start Num: 13

Candidate Starts for BronxBay_42:

(8, 30344), (Start: 13 @30407 has 15 MA's), (16, 30455), (26, 30563), (53, 30755), (63, 30866),

Gene: CherryBlossom_65 Start: 42942, Stop: 43376, Start Num: 15

Candidate Starts for CherryBlossom_65:

(Start: 15 @42942 has 29 MA's), (20, 42984), (32, 43116), (33, 43137), (38, 43170), (41, 43206), (47, 43239),

Gene: CricKo_68 Start: 43242, Stop: 43793, Start Num: 7

Candidate Starts for CricKo_68:

(Start: 7 @43242 has 5 MA's), (14, 43332), (23, 43470), (26, 43497), (29, 43506), (36, 43557), (50, 43677),

Gene: Ditters_44 Start: 35243, Stop: 35662, Start Num: 15

Candidate Starts for Ditters_44:

(Start: 9 @35141 has 1 MA's), (Start: 15 @35243 has 29 MA's), (22, 35333), (30, 35381), (39, 35447), (56, 35567), (61, 35627),

Gene: Djungelskog_42 Start: 30406, Stop: 30873, Start Num: 13

Candidate Starts for Djungelskog_42:

(8, 30343), (Start: 13 @30406 has 15 MA's), (16, 30454), (26, 30562), (53, 30754), (63, 30865),

Gene: DoctorPepper_41 Start: 30108, Stop: 30578, Start Num: 13

Candidate Starts for DoctorPepper_41:

(8, 30045), (10, 30084), (Start: 13 @30108 has 15 MA's), (16, 30156), (26, 30264), (34, 30318), (42, 30393), (57, 30480),

Gene: Doxi13_46 Start: 34768, Stop: 35187, Start Num: 15

Candidate Starts for Doxi13_46:

(12, 34723), (Start: 13 @34732 has 15 MA's), (Start: 15 @34768 has 29 MA's), (22, 34858), (30, 34906), (45, 35026),

Gene: Egad_42 Start: 30408, Stop: 30875, Start Num: 13

Candidate Starts for Egad_42:

(8, 30345), (Start: 13 @30408 has 15 MA's), (16, 30456), (19, 30474), (26, 30564), (53, 30756), (63, 30867),

Gene: Elver_89 Start: 51516, Stop: 52001, Start Num: 11

Candidate Starts for Elver_89:

(Start: 11 @51516 has 3 MA's), (24, 51693), (37, 51777), (49, 51879), (50, 51882), (52, 51894), (55, 51909), (59, 51954),

Gene: FidgetOrca_67 Start: 43478, Stop: 43912, Start Num: 15

Candidate Starts for FidgetOrca_67:

(Start: 15 @43478 has 29 MA's), (20, 43520), (32, 43652), (33, 43673), (38, 43706), (41, 43742), (47, 43775),

Gene: FromIndy_69 Start: 42844, Stop: 43386, Start Num: 7

Candidate Starts for FromIndy_69:

(Start: 7 @42844 has 5 MA's), (35, 43153), (51, 43273), (54, 43291),

Gene: GirlPower_59 Start: 43211, Stop: 43651, Start Num: 15

Candidate Starts for GirlPower_59:

(Start: 15 @43211 has 29 MA's), (20, 43253), (32, 43385), (33, 43406), (47, 43508),

Gene: GoblinVoyage_45 Start: 34559, Stop: 34978, Start Num: 15

Candidate Starts for GoblinVoyage_45:

(Start: 9 @34457 has 1 MA's), (Start: 15 @34559 has 29 MA's), (30, 34697), (44, 34814), (45, 34817), (62, 34973),

Gene: HerbBucket_42 Start: 30108, Stop: 30575, Start Num: 13

Candidate Starts for HerbBucket_42:

(8, 30045), (Start: 13 @30108 has 15 MA's), (16, 30156), (19, 30174), (26, 30264),

Gene: Hoshi_66 Start: 43085, Stop: 43519, Start Num: 15

Candidate Starts for Hoshi_66:

(Start: 15 @43085 has 29 MA's), (20, 43127), (32, 43259), (33, 43280), (38, 43313), (41, 43349), (47, 43382),

Gene: HotFries_44 Start: 34745, Stop: 35164, Start Num: 15

Candidate Starts for HotFries_44:

(12, 34700), (Start: 13 @34709 has 15 MA's), (Start: 15 @34745 has 29 MA's), (22, 34835), (30, 34883), (45, 35003),

Gene: IceWarrior_64 Start: 42761, Stop: 43195, Start Num: 15

Candidate Starts for IceWarrior_64:

(Start: 15 @42761 has 29 MA's), (20, 42803), (32, 42935), (33, 42956), (38, 42989), (41, 43025), (47, 43058),

Gene: Indigenous_67 Start: 43482, Stop: 43916, Start Num: 15

Candidate Starts for Indigenous_67:

(Start: 15 @43482 has 29 MA's), (20, 43524), (32, 43656), (33, 43677), (38, 43710), (41, 43746), (47, 43779),

Gene: Jaylociraptor_65 Start: 43078, Stop: 43512, Start Num: 15

Candidate Starts for Jaylociraptor_65:

(Start: 15 @43078 has 29 MA's), (20, 43120), (32, 43252), (33, 43273), (38, 43306), (41, 43342), (47, 43375),

Gene: Jeremy4pt0_41 Start: 30103, Stop: 30573, Start Num: 13

Candidate Starts for Jeremy4pt0_41:

(8, 30040), (Start: 13 @30103 has 15 MA's), (16, 30151), (19, 30169), (26, 30259), (34, 30313), (42, 30388), (57, 30475),

Gene: Kardashian_64 Start: 43749, Stop: 44150, Start Num: 15

Candidate Starts for Kardashian_64:

(5, 43602), (Start: 15 @43749 has 29 MA's), (25, 43872), (30, 43893), (40, 43962), (46, 44001), (50, 44037), (55, 44061), (56, 44064),

Gene: Linda_42 Start: 30401, Stop: 30871, Start Num: 13

Candidate Starts for Linda_42:

(8, 30338), (Start: 13 @30401 has 15 MA's), (16, 30449), (26, 30557), (34, 30611), (42, 30686), (57, 30773),

Gene: Maya_65 Start: 43092, Stop: 43526, Start Num: 15

Candidate Starts for Maya_65:

(Start: 15 @43092 has 29 MA's), (20, 43134), (32, 43266), (33, 43287), (38, 43320), (41, 43356), (47, 43389),

Gene: Meibysrarus_63 Start: 42455, Stop: 42889, Start Num: 15

Candidate Starts for Meibysrarus_63:

(Start: 15 @42455 has 29 MA's), (20, 42497), (32, 42629), (33, 42650), (38, 42683), (41, 42719), (47, 42752),

Gene: Michelle_42 Start: 30406, Stop: 30873, Start Num: 13

Candidate Starts for Michelle_42:

(8, 30343), (Start: 13 @30406 has 15 MA's), (16, 30454), (26, 30562), (53, 30754), (63, 30865),

Gene: Miek_64 Start: 42024, Stop: 42575, Start Num: 7

Candidate Starts for Miek_64:

(Start: 7 @42024 has 5 MA's), (14, 42114), (23, 42252), (26, 42279), (29, 42288), (36, 42339), (50, 42459),

Gene: Monse_44 Start: 34464, Stop: 34883, Start Num: 15

Candidate Starts for Monse_44:

(2, 34044), (Start: 9 @34362 has 1 MA's), (Start: 15 @34464 has 29 MA's), (22, 34554), (31, 34605), (35, 34647), (36, 34650), (38, 34662), (43, 34716), (52, 34776), (60, 34845),

Gene: Moozy_44 Start: 34555, Stop: 34974, Start Num: 15

Candidate Starts for Moozy_44:

(Start: 9 @34453 has 1 MA's), (Start: 15 @34555 has 29 MA's), (30, 34693), (45, 34813), (62, 34969),

Gene: MrAaronian_42 Start: 30406, Stop: 30873, Start Num: 13

Candidate Starts for MrAaronian_42:

(8, 30343), (Start: 13 @30406 has 15 MA's), (16, 30454), (26, 30562), (53, 30754), (63, 30865),

Gene: Namo_66 Start: 43429, Stop: 43863, Start Num: 15

Candidate Starts for Namo_66:

(Start: 15 @43429 has 29 MA's), (20, 43471), (32, 43603), (33, 43624), (38, 43657), (41, 43693), (47, 43726),

Gene: OlympicHelado_67 Start: 43545, Stop: 43979, Start Num: 15

Candidate Starts for OlympicHelado_67:

(Start: 15 @43545 has 29 MA's), (20, 43587), (32, 43719), (33, 43740), (38, 43773), (41, 43809), (47, 43842),

Gene: Paella_91 Start: 52106, Stop: 52591, Start Num: 11

Candidate Starts for Paella_91:

(Start: 11 @52106 has 3 MA's), (24, 52283), (37, 52367), (49, 52469), (52, 52484), (55, 52499), (59, 52544),

Gene: PherryCruz_44 Start: 34642, Stop: 35163, Start Num: 9

Candidate Starts for PherryCruz_44:

(Start: 9 @34642 has 1 MA's), (Start: 15 @34744 has 29 MA's), (30, 34882), (45, 35002), (52, 35053), (62, 35158),

Gene: Powelldog_44 Start: 30418, Stop: 30891, Start Num: 13

Candidate Starts for Powelldog_44:

(3, 30262), (8, 30355), (Start: 13 @30418 has 15 MA's), (18, 30481), (26, 30568), (38, 30640), (52, 30754),

Gene: ProfFrink_42 Start: 30407, Stop: 30874, Start Num: 13

Candidate Starts for ProfFrink_42:

(8, 30344), (Start: 13 @30407 has 15 MA's), (16, 30455), (19, 30473), (26, 30563), (53, 30755), (63, 30866),

Gene: Qui_91 Start: 52106, Stop: 52591, Start Num: 11

Candidate Starts for Qui_91:

(Start: 11 @52106 has 3 MA's), (24, 52283), (37, 52367), (49, 52469), (52, 52484), (55, 52499), (59, 52544),

Gene: Rainydai_66 Start: 43242, Stop: 43793, Start Num: 7

Candidate Starts for Rainydai_66:

(Start: 7 @43242 has 5 MA's), (14, 43332), (23, 43470), (26, 43497), (29, 43506), (36, 43557), (50, 43677),

Gene: RavenPuff_45 Start: 34764, Stop: 35183, Start Num: 15

Candidate Starts for RavenPuff_45:

(12, 34719), (Start: 13 @34728 has 15 MA's), (Start: 15 @34764 has 29 MA's), (22, 34854), (30, 34902), (45, 35022),

Gene: Regigigas_68 Start: 42854, Stop: 43405, Start Num: 7

Candidate Starts for Regigigas_68:

(Start: 7 @42854 has 5 MA's), (14, 42944), (23, 43082), (26, 43109), (29, 43118), (36, 43169), (50, 43289),

Gene: Rima_66 Start: 43429, Stop: 43863, Start Num: 15

Candidate Starts for Rima_66:

(Start: 15 @43429 has 29 MA's), (20, 43471), (32, 43603), (33, 43624), (38, 43657), (41, 43693), (47, 43726),

Gene: Salk_42 Start: 30401, Stop: 30871, Start Num: 13

Candidate Starts for Salk_42:

(8, 30338), (Start: 13 @30401 has 15 MA's), (16, 30449), (26, 30557), (34, 30611), (42, 30686), (57, 30773),

Gene: Sangak_44 Start: 34322, Stop: 34741, Start Num: 15

Candidate Starts for Sangak_44:

(12, 34277), (Start: 13 @34286 has 15 MA's), (Start: 15 @34322 has 29 MA's), (22, 34412), (30, 34460), (45, 34580),

Gene: Scap1_44 Start: 34342, Stop: 34764, Start Num: 15

Candidate Starts for Scap1_44:

(1, 33865), (6, 34192), (Start: 9 @34240 has 1 MA's), (Start: 15 @34342 has 29 MA's), (22, 34432), (27, 34471), (30, 34483), (32, 34486), (34, 34510), (39, 34549), (48, 34621), (58, 34702),

Gene: SendItCS_63 Start: 42012, Stop: 42563, Start Num: 7

Candidate Starts for SendItCS_63:

(Start: 7 @42012 has 5 MA's), (14, 42102), (23, 42240), (26, 42267), (29, 42276), (36, 42327), (50, 42447),

Gene: SheRa_45 Start: 34622, Stop: 35041, Start Num: 15

Candidate Starts for SheRa_45:

(12, 34577), (Start: 13 @34586 has 15 MA's), (Start: 15 @34622 has 29 MA's), (22, 34712), (30, 34760), (45, 34880), (58, 34979),

Gene: Shiba_41 Start: 30104, Stop: 30571, Start Num: 13

Candidate Starts for Shiba_41:

(8, 30041), (Start: 13 @30104 has 15 MA's), (16, 30152), (26, 30260), (53, 30452), (63, 30563),

Gene: Sloopyjoe_42 Start: 30408, Stop: 30875, Start Num: 13

Candidate Starts for Sloopyjoe_42:

(8, 30345), (Start: 13 @30408 has 15 MA's), (16, 30456), (26, 30564), (53, 30756), (63, 30867),

Gene: Spectropatronm_65 Start: 43085, Stop: 43519, Start Num: 15

Candidate Starts for Spectropatronm_65:

(Start: 15 @43085 has 29 MA's), (20, 43127), (32, 43259), (33, 43280), (38, 43313), (41, 43349), (47, 43382),

Gene: Sprinkle_40 Start: 30206, Stop: 30700, Start Num: 13

Candidate Starts for Sprinkle_40:

(8, 30143), (Start: 13 @30206 has 15 MA's), (17, 30278), (26, 30380), (63, 30677),

Gene: StarLord_42 Start: 30407, Stop: 30874, Start Num: 13

Candidate Starts for StarLord_42:

(8, 30344), (Start: 13 @30407 has 15 MA's), (16, 30455), (26, 30563), (53, 30755), (63, 30866),

Gene: Stayer_42 Start: 30401, Stop: 30871, Start Num: 13

Candidate Starts for Stayer_42:

(8, 30338), (Start: 13 @30401 has 15 MA's), (16, 30449), (26, 30557), (34, 30611), (42, 30686), (57, 30773),

Gene: TaidaOne_67 Start: 43991, Stop: 44425, Start Num: 15

Candidate Starts for TaidaOne_67:

(Start: 15 @43991 has 29 MA's), (20, 44033), (32, 44165), (33, 44186), (38, 44219), (41, 44255), (47, 44288),

Gene: Thiqqums_68 Start: 43242, Stop: 43793, Start Num: 7

Candidate Starts for Thiqqums_68:

(Start: 7 @43242 has 5 MA's), (14, 43332), (23, 43470), (26, 43497), (29, 43506), (36, 43557), (50, 43677),

Gene: TonyStarch_64 Start: 42827, Stop: 43261, Start Num: 15

Candidate Starts for TonyStarch_64:

(Start: 15 @42827 has 29 MA's), (20, 42869), (32, 43001), (33, 43022), (38, 43055), (41, 43091), (47, 43124),

Gene: Wigberry_69 Start: 43866, Stop: 44264, Start Num: 15

Candidate Starts for Wigberry_69:

(4, 43689), (Start: 15 @43866 has 29 MA's), (22, 43956), (28, 43998), (44, 44109), (50, 44151),