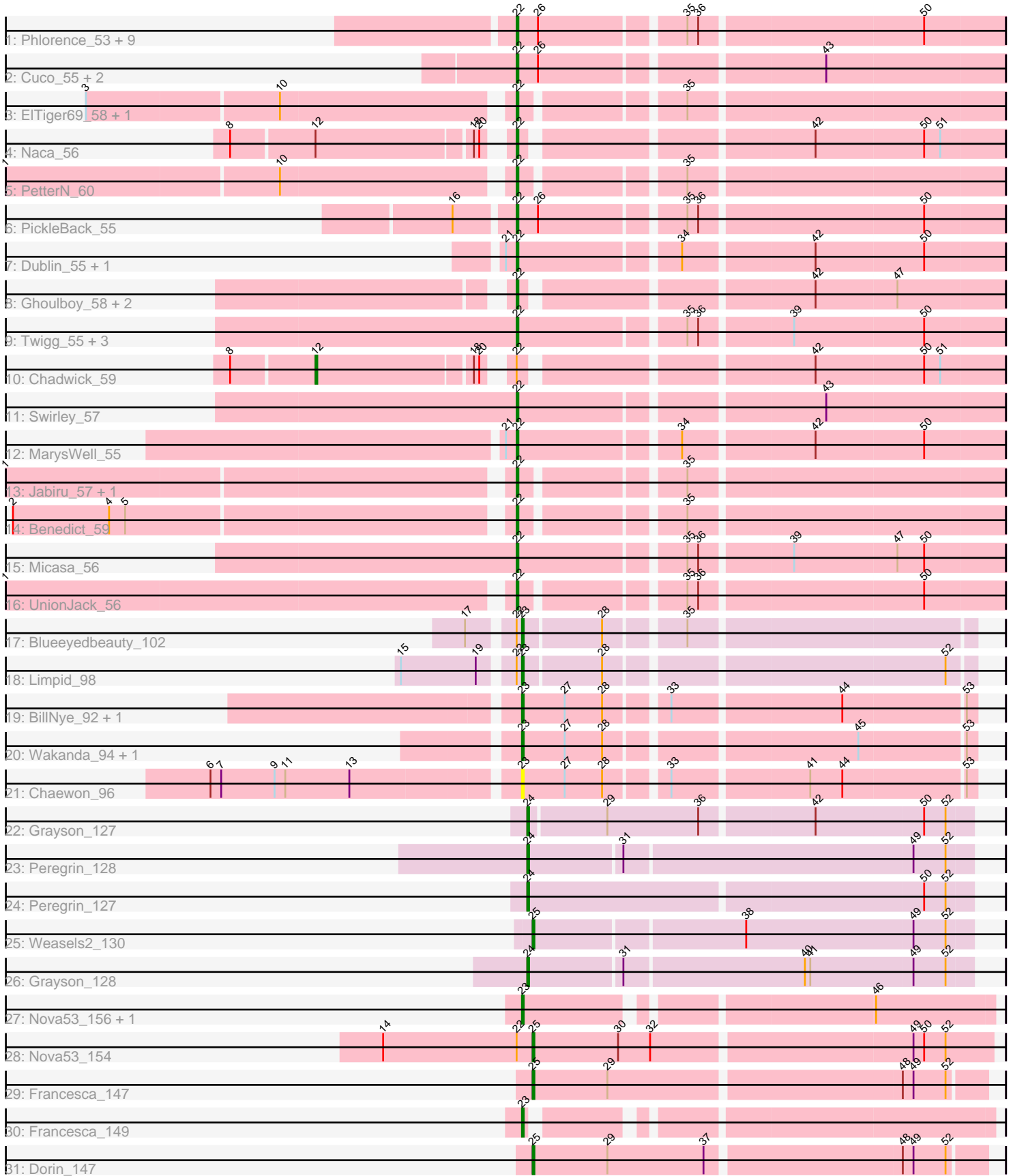


Pham 308720



Note: Tracks are now grouped by subcluster and scaled. Switching in subcluster is indicated by changes in track color. Track scale is now set by default to display the region 30 bp upstream of start 1 to 30 bp downstream of the last possible start. If this default region is judged to be packed too tightly with annotated starts, the track will be further scaled to only show that region of the ORF with annotated starts. This action will be indicated by adding "Zoomed" to the title. For starts, yellow indicates the location of called starts comprised solely of Glimmer/GeneMark auto-annotations, green indicates the location of called starts with at least 1 manual gene annotation.

Pham 308720 Report

This analysis was run 06/27/26 on database version 652.

Pham number 308720 has 53 members, 3 are drafts.

Phages represented in each track:

- Track 1 : Phlorence_53, Discoknowium_53, Jovo_55, Lev2_55, Archetta_54, Conspiracy_55, ForGetIt_55, Tiger_54, Aragog_54, AgentM_54
- Track 2 : Cuco_55, Coog_54, Midas2_54
- Track 3 : EITiger69_58, Airmid_56
- Track 4 : Naca_56
- Track 5 : PetterN_60
- Track 6 : PickleBack_55
- Track 7 : Dublin_55, Theia_54
- Track 8 : Ghoulboy_58, SydNat_58, Zolita_57
- Track 9 : Twigg_55, Florence1_52, Tarynearal_53, Florence4_54
- Track 10 : Chadwick_59
- Track 11 : Swirley_57
- Track 12 : MarysWell_55
- Track 13 : Jabiru_57, Scorpia_60
- Track 14 : Benedict_59
- Track 15 : Micasa_56
- Track 16 : UnionJack_56
- Track 17 : Blueeyedbeauty_102
- Track 18 : Limpid_98
- Track 19 : BillNye_92, Circinus_93
- Track 20 : Wakanda_94, Muntaha_96
- Track 21 : Chaewon_96
- Track 22 : Grayson_127
- Track 23 : Peregrin_128
- Track 24 : Peregrin_127
- Track 25 : Weasels2_130
- Track 26 : Grayson_128
- Track 27 : Nova53_156, Dorin_149
- Track 28 : Nova53_154
- Track 29 : Francesca_147
- Track 30 : Francesca_149
- Track 31 : Dorin_147

Summary of Final Annotations (See graph section above for start numbers):

The start number called the most often in the published annotations is 22, it was called in 32 of the 50 non-draft genes in the pham.

Genes that call this "Most Annotated" start:

- AgentM_54, Airmid_56, Aragog_54, Archetta_54, Benedict_59, Conspiracy_55, Coog_54, Cuco_55, Discoknowium_53, Dublin_55, ElTiger69_58, Florence1_52, Florence4_54, ForGetIt_55, Ghoulboy_58, Jabiru_57, Jovo_55, Lev2_55, MarysWell_55, Micasa_56, Midas2_54, Naca_56, PetterN_60, Phlorence_53, PickleBack_55, Scorpia_60, Swirley_57, SydNat_58, Tarynearal_53, Theia_54, Tiger_54, Twigg_55, UnionJack_56, Zolita_57,

Genes that have the "Most Annotated" start but do not call it:

- Blueeyedbeauty_102, Chadwick_59, Limpid_98, Nova53_154,

Genes that do not have the "Most Annotated" start:

- BillNye_92, Chaewon_96, Circinus_93, Dorin_147, Dorin_149, Francesca_147, Francesca_149, Grayson_127, Grayson_128, Muntaha_96, Nova53_156, Peregrin_127, Peregrin_128, Wakanda_94, Weasels2_130,

Summary by start number:

Start 12:

- Found in 2 of 53 (3.8%) of genes in pham
- Manual Annotations of this start: 1 of 50
- Called 50.0% of time when present
- Phage (with cluster) where this start called: Chadwick_59 (A5),

Start 22:

- Found in 38 of 53 (71.7%) of genes in pham
- Manual Annotations of this start: 32 of 50
- Called 89.5% of time when present
- Phage (with cluster) where this start called: AgentM_54 (A5), Airmid_56 (A5), Aragog_54 (A5), Archetta_54 (A5), Benedict_59 (A5), Conspiracy_55 (A5), Coog_54 (A5), Cuco_55 (A5), Discoknowium_53 (A5), Dublin_55 (A5), ElTiger69_58 (A5), Florence1_52 (A5), Florence4_54 (A5), ForGetIt_55 (A5), Ghoulboy_58 (A5), Jabiru_57 (A5), Jovo_55 (A5), Lev2_55 (A5), MarysWell_55 (A5), Micasa_56 (A5), Midas2_54 (A5), Naca_56 (A5), PetterN_60 (A5), Phlorence_53 (A5), PickleBack_55 (A5), Scorpia_60 (A5), Swirley_57 (A5), SydNat_58 (A5), Tarynearal_53 (A5), Theia_54 (A5), Tiger_54 (A5), Twigg_55 (A5), UnionJack_56 (A5), Zolita_57 (A5),

Start 23:

- Found in 10 of 53 (18.9%) of genes in pham
- Manual Annotations of this start: 9 of 50
- Called 100.0% of time when present
- Phage (with cluster) where this start called: BillNye_92 (BK2), Blueeyedbeauty_102 (BK1), Chaewon_96 (BK2), Circinus_93 (BK2), Dorin_149 (CG), Francesca_149 (CG), Limpid_98 (BK1), Muntaha_96 (BK2), Nova53_156 (CG), Wakanda_94 (BK2),

Start 24:

- Found in 4 of 53 (7.5%) of genes in pham
- Manual Annotations of this start: 4 of 50
- Called 100.0% of time when present

- Phage (with cluster) where this start called: Grayson_127 (CB), Grayson_128 (CB), Peregrin_127 (CB), Peregrin_128 (CB),

Start 25:

- Found in 4 of 53 (7.5%) of genes in pham
- Manual Annotations of this start: 4 of 50
- Called 100.0% of time when present
- Phage (with cluster) where this start called: Dorin_147 (CG), Francesca_147 (CG), Nova53_154 (CG), Weasels2_130 (CB),

Summary by clusters:

There are 5 clusters represented in this pham: CG, CB, A5, BK1, BK2,

Info for manual annotations of cluster A5:

- Start number 12 was manually annotated 1 time for cluster A5.
- Start number 22 was manually annotated 32 times for cluster A5.

Info for manual annotations of cluster BK1:

- Start number 23 was manually annotated 2 times for cluster BK1.

Info for manual annotations of cluster BK2:

- Start number 23 was manually annotated 4 times for cluster BK2.

Info for manual annotations of cluster CB:

- Start number 24 was manually annotated 4 times for cluster CB.
- Start number 25 was manually annotated 1 time for cluster CB.

Info for manual annotations of cluster CG:

- Start number 23 was manually annotated 3 times for cluster CG.
- Start number 25 was manually annotated 3 times for cluster CG.

Gene Information:

Gene: AgentM_54 Start: 38609, Stop: 38352, Start Num: 22

Candidate Starts for AgentM_54:

(Start: 22 @38609 has 32 MA's), (26, 38597), (35, 38522), (36, 38516), (50, 38396),

Gene: Airmid_56 Start: 38747, Stop: 38496, Start Num: 22

Candidate Starts for Airmid_56:

(3, 38972), (10, 38867), (Start: 22 @38747 has 32 MA's), (35, 38666),

Gene: Aragog_54 Start: 38629, Stop: 38372, Start Num: 22

Candidate Starts for Aragog_54:

(Start: 22 @38629 has 32 MA's), (26, 38617), (35, 38542), (36, 38536), (50, 38416),

Gene: Archetta_54 Start: 39039, Stop: 38782, Start Num: 22

Candidate Starts for Archetta_54:

(Start: 22 @39039 has 32 MA's), (26, 39027), (35, 38952), (36, 38946), (50, 38826),

Gene: Benedict_59 Start: 38995, Stop: 38744, Start Num: 22

Candidate Starts for Benedict_59:

(2, 39262), (4, 39208), (5, 39199), (Start: 22 @38995 has 32 MA's), (35, 38914),

Gene: BillNye_92 Start: 68857, Stop: 69093, Start Num: 23

Candidate Starts for BillNye_92:

(Start: 23 @68857 has 9 MA's), (27, 68881), (28, 68902), (33, 68932), (44, 69022), (53, 69088),

Gene: Blueeyedbeauty_102 Start: 67743, Stop: 67976, Start Num: 23

Candidate Starts for Blueeyedbeauty_102:

(17, 67719), (Start: 22 @67740 has 32 MA's), (Start: 23 @67743 has 9 MA's), (28, 67785), (35, 67824),

Gene: Chadwick_59 Start: 38932, Stop: 38585, Start Num: 12

Candidate Starts for Chadwick_59:

(8, 38977), (Start: 12 @38932 has 1 MA's), (18, 38848), (20, 38845), (Start: 22 @38836 has 32 MA's), (42, 38689), (50, 38629), (51, 38620),

Gene: Chaewon_96 Start: 68701, Stop: 68937, Start Num: 23

Candidate Starts for Chaewon_96:

(6, 68536), (7, 68542), (9, 68572), (11, 68578), (13, 68614), (Start: 23 @68701 has 9 MA's), (27, 68725), (28, 68746), (33, 68776), (41, 68848), (44, 68866), (53, 68932),

Gene: Circinus_93 Start: 68844, Stop: 69080, Start Num: 23

Candidate Starts for Circinus_93:

(Start: 23 @68844 has 9 MA's), (27, 68868), (28, 68889), (33, 68919), (44, 69009), (53, 69075),

Gene: Conspiracy_55 Start: 38851, Stop: 38594, Start Num: 22

Candidate Starts for Conspiracy_55:

(Start: 22 @38851 has 32 MA's), (26, 38839), (35, 38764), (36, 38758), (50, 38638),

Gene: Coog_54 Start: 39045, Stop: 38788, Start Num: 22

Candidate Starts for Coog_54:

(Start: 22 @39045 has 32 MA's), (26, 39033), (43, 38886),

Gene: Cuco_55 Start: 38905, Stop: 38648, Start Num: 22

Candidate Starts for Cuco_55:

(Start: 22 @38905 has 32 MA's), (26, 38893), (43, 38746),

Gene: Discoknowium_53 Start: 38518, Stop: 38261, Start Num: 22

Candidate Starts for Discoknowium_53:

(Start: 22 @38518 has 32 MA's), (26, 38506), (35, 38431), (36, 38425), (50, 38305),

Gene: Dorin_149 Start: 88606, Stop: 88848, Start Num: 23

Candidate Starts for Dorin_149:

(Start: 23 @88606 has 9 MA's), (46, 88783),

Gene: Dorin_147 Start: 88197, Stop: 88442, Start Num: 25

Candidate Starts for Dorin_147:

(Start: 25 @88197 has 4 MA's), (29, 88239), (37, 88293), (48, 88398), (49, 88404), (52, 88422),

Gene: Dublin_55 Start: 39020, Stop: 38763, Start Num: 22

Candidate Starts for Dublin_55:

(21, 39026), (Start: 22 @39020 has 32 MA's), (34, 38936), (42, 38867), (50, 38807),

Gene: EITiger69_58 Start: 38971, Stop: 38720, Start Num: 22
Candidate Starts for EITiger69_58:
(3, 39196), (10, 39091), (Start: 22 @38971 has 32 MA's), (35, 38890),

Gene: Florence1_52 Start: 38384, Stop: 38127, Start Num: 22
Candidate Starts for Florence1_52:
(Start: 22 @38384 has 32 MA's), (35, 38297), (36, 38291), (39, 38243), (50, 38171),

Gene: Florence4_54 Start: 38384, Stop: 38127, Start Num: 22
Candidate Starts for Florence4_54:
(Start: 22 @38384 has 32 MA's), (35, 38297), (36, 38291), (39, 38243), (50, 38171),

Gene: ForGetIt_55 Start: 38876, Stop: 38619, Start Num: 22
Candidate Starts for ForGetIt_55:
(Start: 22 @38876 has 32 MA's), (26, 38864), (35, 38789), (36, 38783), (50, 38663),

Gene: Francesca_147 Start: 88894, Stop: 89139, Start Num: 25
Candidate Starts for Francesca_147:
(Start: 25 @88894 has 4 MA's), (29, 88936), (48, 89095), (49, 89101), (52, 89119),

Gene: Francesca_149 Start: 89303, Stop: 89536, Start Num: 23
Candidate Starts for Francesca_149:
(Start: 23 @89303 has 9 MA's),

Gene: Ghoulboy_58 Start: 39749, Stop: 39498, Start Num: 22
Candidate Starts for Ghoulboy_58:
(Start: 22 @39749 has 32 MA's), (42, 39602), (47, 39557),

Gene: Grayson_127 Start: 76957, Stop: 77196, Start Num: 24
Candidate Starts for Grayson_127:
(Start: 24 @76957 has 4 MA's), (29, 76999), (36, 77050), (42, 77110), (50, 77170), (52, 77182),

Gene: Grayson_128 Start: 77193, Stop: 77435, Start Num: 24
Candidate Starts for Grayson_128:
(Start: 24 @77193 has 4 MA's), (31, 77244), (40, 77343), (41, 77346), (49, 77403), (52, 77421),

Gene: Jabiru_57 Start: 38850, Stop: 38599, Start Num: 22
Candidate Starts for Jabiru_57:
(1, 39120), (Start: 22 @38850 has 32 MA's), (35, 38769),

Gene: Jovo_55 Start: 39132, Stop: 38875, Start Num: 22
Candidate Starts for Jovo_55:
(Start: 22 @39132 has 32 MA's), (26, 39120), (35, 39045), (36, 39039), (50, 38919),

Gene: Lev2_55 Start: 38764, Stop: 38507, Start Num: 22
Candidate Starts for Lev2_55:
(Start: 22 @38764 has 32 MA's), (26, 38752), (35, 38677), (36, 38671), (50, 38551),

Gene: Limpid_98 Start: 67780, Stop: 68013, Start Num: 23
Candidate Starts for Limpid_98:
(15, 67720), (19, 67762), (Start: 22 @67777 has 32 MA's), (Start: 23 @67780 has 9 MA's), (28, 67822),
(52, 67999),

Gene: MarysWell_55 Start: 39263, Stop: 39006, Start Num: 22

Candidate Starts for MarysWell_55:

(21, 39269), (Start: 22 @39263 has 32 MA's), (34, 39179), (42, 39110), (50, 39050),

Gene: Micasa_56 Start: 39137, Stop: 38880, Start Num: 22

Candidate Starts for Micasa_56:

(Start: 22 @39137 has 32 MA's), (35, 39050), (36, 39044), (39, 38996), (47, 38939), (50, 38924),

Gene: Midas2_54 Start: 39045, Stop: 38788, Start Num: 22

Candidate Starts for Midas2_54:

(Start: 22 @39045 has 32 MA's), (26, 39033), (43, 38886),

Gene: Muntaha_96 Start: 67690, Stop: 67926, Start Num: 23

Candidate Starts for Muntaha_96:

(Start: 23 @67690 has 9 MA's), (27, 67714), (28, 67735), (45, 67864), (53, 67921),

Gene: Naca_56 Start: 39389, Stop: 39138, Start Num: 22

Candidate Starts for Naca_56:

(8, 39530), (Start: 12 @39485 has 1 MA's), (18, 39401), (20, 39398), (Start: 22 @39389 has 32 MA's), (42, 39242), (50, 39182), (51, 39173),

Gene: Nova53_156 Start: 90976, Stop: 91218, Start Num: 23

Candidate Starts for Nova53_156:

(Start: 23 @90976 has 9 MA's), (46, 91153),

Gene: Nova53_154 Start: 90559, Stop: 90810, Start Num: 25

Candidate Starts for Nova53_154:

(14, 90475), (Start: 22 @90550 has 32 MA's), (Start: 25 @90559 has 4 MA's), (30, 90607), (32, 90625), (49, 90766), (50, 90772), (52, 90784),

Gene: Peregrin_128 Start: 77403, Stop: 77645, Start Num: 24

Candidate Starts for Peregrin_128:

(Start: 24 @77403 has 4 MA's), (31, 77454), (49, 77613), (52, 77631),

Gene: Peregrin_127 Start: 77164, Stop: 77406, Start Num: 24

Candidate Starts for Peregrin_127:

(Start: 24 @77164 has 4 MA's), (50, 77380), (52, 77392),

Gene: PetterN_60 Start: 39004, Stop: 38753, Start Num: 22

Candidate Starts for PetterN_60:

(1, 39274), (10, 39124), (Start: 22 @39004 has 32 MA's), (35, 38923),

Gene: Phlorence_53 Start: 38509, Stop: 38252, Start Num: 22

Candidate Starts for Phlorence_53:

(Start: 22 @38509 has 32 MA's), (26, 38497), (35, 38422), (36, 38416), (50, 38296),

Gene: PickleBack_55 Start: 38756, Stop: 38499, Start Num: 22

Candidate Starts for PickleBack_55:

(16, 38786), (Start: 22 @38756 has 32 MA's), (26, 38744), (35, 38669), (36, 38663), (50, 38543),

Gene: Scorpia_60 Start: 39063, Stop: 38812, Start Num: 22

Candidate Starts for Scorpia_60:

(1, 39333), (Start: 22 @39063 has 32 MA's), (35, 38982),

Gene: Swirley_57 Start: 39125, Stop: 38868, Start Num: 22

Candidate Starts for Swirley_57:

(Start: 22 @39125 has 32 MA's), (43, 38966),

Gene: SydNat_58 Start: 39758, Stop: 39507, Start Num: 22

Candidate Starts for SydNat_58:

(Start: 22 @39758 has 32 MA's), (42, 39611), (47, 39566),

Gene: Tarynearal_53 Start: 38570, Stop: 38313, Start Num: 22

Candidate Starts for Tarynearal_53:

(Start: 22 @38570 has 32 MA's), (35, 38483), (36, 38477), (39, 38429), (50, 38357),

Gene: Theia_54 Start: 39244, Stop: 38987, Start Num: 22

Candidate Starts for Theia_54:

(21, 39250), (Start: 22 @39244 has 32 MA's), (34, 39160), (42, 39091), (50, 39031),

Gene: Tiger_54 Start: 38430, Stop: 38173, Start Num: 22

Candidate Starts for Tiger_54:

(Start: 22 @38430 has 32 MA's), (26, 38418), (35, 38343), (36, 38337), (50, 38217),

Gene: Twigg_55 Start: 38773, Stop: 38516, Start Num: 22

Candidate Starts for Twigg_55:

(Start: 22 @38773 has 32 MA's), (35, 38686), (36, 38680), (39, 38632), (50, 38560),

Gene: UnionJack_56 Start: 38568, Stop: 38317, Start Num: 22

Candidate Starts for UnionJack_56:

(1, 38841), (Start: 22 @38568 has 32 MA's), (35, 38487), (36, 38481), (50, 38361),

Gene: Wakanda_94 Start: 67532, Stop: 67768, Start Num: 23

Candidate Starts for Wakanda_94:

(Start: 23 @67532 has 9 MA's), (27, 67556), (28, 67577), (45, 67706), (53, 67763),

Gene: Weasels2_130 Start: 78415, Stop: 78654, Start Num: 25

Candidate Starts for Weasels2_130:

(Start: 25 @78415 has 4 MA's), (38, 78529), (49, 78622), (52, 78640),

Gene: Zolita_57 Start: 39762, Stop: 39511, Start Num: 22

Candidate Starts for Zolita_57:

(Start: 22 @39762 has 32 MA's), (42, 39615), (47, 39570),