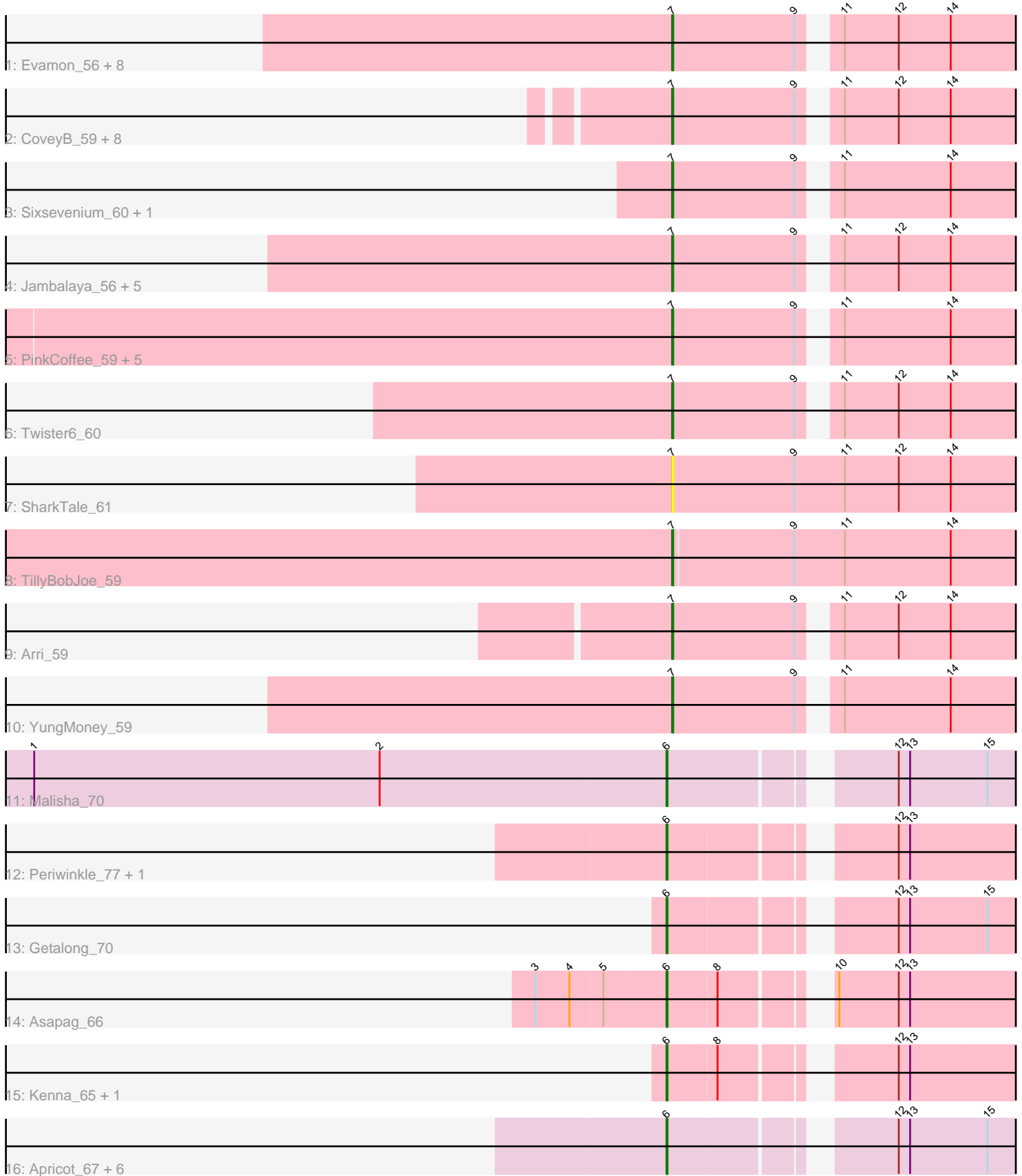


Pham 308738



Note: Tracks are now grouped by subcluster and scaled. Switching in subcluster is indicated by changes in track color. Track scale is now set by default to display the region 30 bp upstream of start 1 to 30 bp downstream of the last possible start. If this default region is judged to be packed too tightly with annotated starts, the track will be further scaled to only show that region of the ORF with annotated starts. This action will be indicated by adding "Zoomed" to the title. For starts, yellow indicates the location of called starts comprised solely of Glimmer/GeneMark auto-annotations, green indicates the location of called starts with at least 1 manual gene annotation.

Pham 308738 Report

This analysis was run 06/27/26 on database version 652.

Pham number 308738 has 51 members, 7 are drafts.

Phages represented in each track:

- Track 1 : Evamon_56, Egi03_57, Sendy_58, Nubi_57, Portcullis_58, Salvador_56, Togo_56, SmokingBunny_57, JohnPork_59
- Track 2 : CoveyB_59, RogerDodger_60, Wizard_56, Halo3_57, Gezellig_56, CherryCola_59, Valary_59, VanDeWege_60, PullumCavea_56
- Track 3 : Sixsevenium_60, Bakery_62
- Track 4 : Jambalaya_56, Shinji_56, Fireball_59, Danyall_58, Mutzi_56, Savbucketdawg_56
- Track 5 : PinkCoffee_59, ClamChowder_59, KimmyK_58, Barb_59, Phlop_56, Fugax_60
- Track 6 : Twister6_60
- Track 7 : SharkTale_61
- Track 8 : TillyBobJoe_59
- Track 9 : Arri_59
- Track 10 : YungMoney_59
- Track 11 : Malisha_70
- Track 12 : Periwinkle_77, Leroy_67
- Track 13 : Getalong_70
- Track 14 : Asapag_66
- Track 15 : Kenna_65, Lutum_70
- Track 16 : Apricot_67, Frickyeah_71, Holliday_71, Phistory_66, Crater_67, BENtherdunthat_71, ShawBrad_72

Summary of Final Annotations (See graph section above for start numbers):

The start number called the most often in the published annotations is 7, it was called in 32 of the 44 non-draft genes in the pham.

Genes that call this "Most Annotated" start:

- Arri_59, Bakery_62, Barb_59, CherryCola_59, ClamChowder_59, CoveyB_59, Danyall_58, Egi03_57, Evamon_56, Fireball_59, Fugax_60, Gezellig_56, Halo3_57, Jambalaya_56, JohnPork_59, KimmyK_58, Mutzi_56, Nubi_57, Phlop_56, PinkCoffee_59, Portcullis_58, PullumCavea_56, RogerDodger_60, Salvador_56, Savbucketdawg_56, Sendy_58, SharkTale_61, Shinji_56, Sixsevenium_60, SmokingBunny_57, TillyBobJoe_59, Togo_56, Twister6_60, Valary_59,

VanDeWege_60, Wizard_56, YungMoney_59,

Genes that have the "Most Annotated" start but do not call it:

-

Genes that do not have the "Most Annotated" start:

- Apricot_67, Asapag_66, BENtherdunthat_71, Crater_67, Frickyeah_71, Getalong_70, Holliday_71, Kenna_65, Leroy_67, Lutum_70, Malisha_70, Periwinkle_77, Phistory_66, ShawBrad_72,

Summary by start number:

Start 6:

- Found in 14 of 51 (27.5%) of genes in pham
- Manual Annotations of this start: 12 of 44
- Called 100.0% of time when present
- Phage (with cluster) where this start called: Apricot_67 (DN3), Asapag_66 (DN1), BENtherdunthat_71 (DN1), Crater_67 (DN3), Frickyeah_71 (DN1), Getalong_70 (DN1), Holliday_71 (DN1), Kenna_65 (DN1), Leroy_67 (DN1), Lutum_70 (DN1), Malisha_70 (DN), Periwinkle_77 (DN1), Phistory_66 (DN1), ShawBrad_72 (DN1),

Start 7:

- Found in 37 of 51 (72.5%) of genes in pham
- Manual Annotations of this start: 32 of 44
- Called 100.0% of time when present
- Phage (with cluster) where this start called: Arri_59 (DC1), Bakery_62 (DC1), Barb_59 (DC1), CherryCola_59 (DC1), ClamChowder_59 (DC1), CoveyB_59 (DC1), Danyall_58 (DC1), Egi03_57 (DC1), Evamon_56 (DC1), Fireball_59 (DC1), Fugax_60 (DC1), Gezellig_56 (DC1), Halo3_57 (DC1), Jambalaya_56 (DC1), JohnPork_59 (DC1), KimmyK_58 (DC1), Mutzi_56 (DC1), Nubi_57 (DC1), Phlop_56 (DC1), PinkCoffee_59 (DC1), Portcullis_58 (DC1), PullumCavea_56 (DC1), RogerDodger_60 (DC1), Salvador_56 (DC1), Savbucketdawg_56 (DC1), Sendy_58 (DC1), SharkTale_61 (DC1), Shinji_56 (DC1), Sixsevenium_60 (DC1), SmokingBunny_57 (DC1), TillyBobJoe_59 (DC1), Togo_56 (DC1), Twister6_60 (DC1), Valary_59 (DC1), VanDeWege_60 (DC1), Wizard_56 (DC1), YungMoney_59 (DC1),

Summary by clusters:

There are 4 clusters represented in this pham: DN, DN1, DN3, DC1,

Info for manual annotations of cluster DC1:

- Start number 7 was manually annotated 32 times for cluster DC1.

Info for manual annotations of cluster DN:

- Start number 6 was manually annotated 1 time for cluster DN.

Info for manual annotations of cluster DN1:

- Start number 6 was manually annotated 9 times for cluster DN1.

Info for manual annotations of cluster DN3:

- Start number 6 was manually annotated 2 times for cluster DN3.

Gene Information:

Gene: Apricot_67 Start: 40426, Stop: 40812, Start Num: 6

Candidate Starts for Apricot_67:

(Start: 6 @40426 has 12 MA's), (12, 40627), (13, 40639), (15, 40720),

Gene: Arri_59 Start: 43393, Stop: 43824, Start Num: 7

Candidate Starts for Arri_59:

(Start: 7 @43393 has 32 MA's), (9, 43522), (11, 43549), (12, 43606), (14, 43660),

Gene: Asapag_66 Start: 40420, Stop: 40806, Start Num: 6

Candidate Starts for Asapag_66:

(3, 40288), (4, 40324), (5, 40357), (Start: 6 @40420 has 12 MA's), (8, 40471), (10, 40558), (12, 40621), (13, 40633),

Gene: BENtherdunthat_71 Start: 41774, Stop: 42160, Start Num: 6

Candidate Starts for BENtherdunthat_71:

(Start: 6 @41774 has 12 MA's), (12, 41975), (13, 41987), (15, 42068),

Gene: Bakery_62 Start: 44583, Stop: 45014, Start Num: 7

Candidate Starts for Bakery_62:

(Start: 7 @44583 has 32 MA's), (9, 44712), (11, 44739), (14, 44850),

Gene: Barb_59 Start: 43430, Stop: 43861, Start Num: 7

Candidate Starts for Barb_59:

(Start: 7 @43430 has 32 MA's), (9, 43559), (11, 43586), (14, 43697),

Gene: CherryCola_59 Start: 44063, Stop: 44494, Start Num: 7

Candidate Starts for CherryCola_59:

(Start: 7 @44063 has 32 MA's), (9, 44192), (11, 44219), (12, 44276), (14, 44330),

Gene: ClamChowder_59 Start: 43430, Stop: 43861, Start Num: 7

Candidate Starts for ClamChowder_59:

(Start: 7 @43430 has 32 MA's), (9, 43559), (11, 43586), (14, 43697),

Gene: CoveyB_59 Start: 43108, Stop: 43539, Start Num: 7

Candidate Starts for CoveyB_59:

(Start: 7 @43108 has 32 MA's), (9, 43237), (11, 43264), (12, 43321), (14, 43375),

Gene: Crater_67 Start: 40821, Stop: 41207, Start Num: 6

Candidate Starts for Crater_67:

(Start: 6 @40821 has 12 MA's), (12, 41022), (13, 41034), (15, 41115),

Gene: Danyall_58 Start: 43255, Stop: 43686, Start Num: 7

Candidate Starts for Danyall_58:

(Start: 7 @43255 has 32 MA's), (9, 43384), (11, 43411), (12, 43468), (14, 43522),

Gene: Egi03_57 Start: 42900, Stop: 43331, Start Num: 7

Candidate Starts for Egi03_57:

(Start: 7 @42900 has 32 MA's), (9, 43029), (11, 43056), (12, 43113), (14, 43167),

Gene: Evamon_56 Start: 43157, Stop: 43588, Start Num: 7

Candidate Starts for Evamon_56:

(Start: 7 @43157 has 32 MA's), (9, 43286), (11, 43313), (12, 43370), (14, 43424),

Gene: Fireball_59 Start: 43890, Stop: 44321, Start Num: 7

Candidate Starts for Fireball_59:

(Start: 7 @43890 has 32 MA's), (9, 44019), (11, 44046), (12, 44103), (14, 44157),

Gene: Frickyeah_71 Start: 40913, Stop: 41299, Start Num: 6

Candidate Starts for Frickyeah_71:

(Start: 6 @40913 has 12 MA's), (12, 41114), (13, 41126), (15, 41207),

Gene: Fugax_60 Start: 43422, Stop: 43853, Start Num: 7

Candidate Starts for Fugax_60:

(Start: 7 @43422 has 32 MA's), (9, 43551), (11, 43578), (14, 43689),

Gene: Getalong_70 Start: 43012, Stop: 43398, Start Num: 6

Candidate Starts for Getalong_70:

(Start: 6 @43012 has 12 MA's), (12, 43213), (13, 43225), (15, 43306),

Gene: Gezellig_56 Start: 43261, Stop: 43692, Start Num: 7

Candidate Starts for Gezellig_56:

(Start: 7 @43261 has 32 MA's), (9, 43390), (11, 43417), (12, 43474), (14, 43528),

Gene: Halo3_57 Start: 43846, Stop: 44277, Start Num: 7

Candidate Starts for Halo3_57:

(Start: 7 @43846 has 32 MA's), (9, 43975), (11, 44002), (12, 44059), (14, 44113),

Gene: Holliday_71 Start: 44536, Stop: 44922, Start Num: 6

Candidate Starts for Holliday_71:

(Start: 6 @44536 has 12 MA's), (12, 44737), (13, 44749), (15, 44830),

Gene: Jambalaya_56 Start: 43053, Stop: 43484, Start Num: 7

Candidate Starts for Jambalaya_56:

(Start: 7 @43053 has 32 MA's), (9, 43182), (11, 43209), (12, 43266), (14, 43320),

Gene: JohnPork_59 Start: 43055, Stop: 43486, Start Num: 7

Candidate Starts for JohnPork_59:

(Start: 7 @43055 has 32 MA's), (9, 43184), (11, 43211), (12, 43268), (14, 43322),

Gene: Kenna_65 Start: 40451, Stop: 40837, Start Num: 6

Candidate Starts for Kenna_65:

(Start: 6 @40451 has 12 MA's), (8, 40502), (12, 40652), (13, 40664),

Gene: KimmyK_58 Start: 43864, Stop: 44295, Start Num: 7

Candidate Starts for KimmyK_58:

(Start: 7 @43864 has 32 MA's), (9, 43993), (11, 44020), (14, 44131),

Gene: Leroy_67 Start: 40757, Stop: 41143, Start Num: 6

Candidate Starts for Leroy_67:

(Start: 6 @40757 has 12 MA's), (12, 40958), (13, 40970),

Gene: Lutum_70 Start: 41615, Stop: 42001, Start Num: 6

Candidate Starts for Lutum_70:

(Start: 6 @41615 has 12 MA's), (8, 41666), (12, 41816), (13, 41828),

Gene: Malisha_70 Start: 42470, Stop: 42856, Start Num: 6

Candidate Starts for Malisha_70:

(1, 41804), (2, 42170), (Start: 6 @42470 has 12 MA's), (12, 42671), (13, 42683), (15, 42764),

Gene: Mutzi_56 Start: 44382, Stop: 44813, Start Num: 7

Candidate Starts for Mutzi_56:

(Start: 7 @44382 has 32 MA's), (9, 44511), (11, 44538), (12, 44595), (14, 44649),

Gene: Nubi_57 Start: 43262, Stop: 43693, Start Num: 7

Candidate Starts for Nubi_57:

(Start: 7 @43262 has 32 MA's), (9, 43391), (11, 43418), (12, 43475), (14, 43529),

Gene: Periwinkle_77 Start: 43921, Stop: 44307, Start Num: 6

Candidate Starts for Periwinkle_77:

(Start: 6 @43921 has 12 MA's), (12, 44122), (13, 44134),

Gene: Phistory_66 Start: 39986, Stop: 40372, Start Num: 6

Candidate Starts for Phistory_66:

(Start: 6 @39986 has 12 MA's), (12, 40187), (13, 40199), (15, 40280),

Gene: Phlop_56 Start: 43336, Stop: 43767, Start Num: 7

Candidate Starts for Phlop_56:

(Start: 7 @43336 has 32 MA's), (9, 43465), (11, 43492), (14, 43603),

Gene: PinkCoffee_59 Start: 43439, Stop: 43870, Start Num: 7

Candidate Starts for PinkCoffee_59:

(Start: 7 @43439 has 32 MA's), (9, 43568), (11, 43595), (14, 43706),

Gene: Portcullis_58 Start: 43055, Stop: 43486, Start Num: 7

Candidate Starts for Portcullis_58:

(Start: 7 @43055 has 32 MA's), (9, 43184), (11, 43211), (12, 43268), (14, 43322),

Gene: PullumCavea_56 Start: 43336, Stop: 43767, Start Num: 7

Candidate Starts for PullumCavea_56:

(Start: 7 @43336 has 32 MA's), (9, 43465), (11, 43492), (12, 43549), (14, 43603),

Gene: RogerDodger_60 Start: 43458, Stop: 43889, Start Num: 7

Candidate Starts for RogerDodger_60:

(Start: 7 @43458 has 32 MA's), (9, 43587), (11, 43614), (12, 43671), (14, 43725),

Gene: Salvador_56 Start: 43155, Stop: 43586, Start Num: 7

Candidate Starts for Salvador_56:

(Start: 7 @43155 has 32 MA's), (9, 43284), (11, 43311), (12, 43368), (14, 43422),

Gene: Savbucketdawg_56 Start: 43053, Stop: 43484, Start Num: 7

Candidate Starts for Savbucketdawg_56:

(Start: 7 @43053 has 32 MA's), (9, 43182), (11, 43209), (12, 43266), (14, 43320),

Gene: Sendy_58 Start: 43463, Stop: 43894, Start Num: 7

Candidate Starts for Sendy_58:

(Start: 7 @43463 has 32 MA's), (9, 43592), (11, 43619), (12, 43676), (14, 43730),

Gene: SharkTale_61 Start: 44982, Stop: 45440, Start Num: 7
Candidate Starts for SharkTale_61:
(Start: 7 @44982 has 32 MA's), (9, 45111), (11, 45165), (12, 45222), (14, 45276),

Gene: ShawBrad_72 Start: 41077, Stop: 41463, Start Num: 6
Candidate Starts for ShawBrad_72:
(Start: 6 @41077 has 12 MA's), (12, 41278), (13, 41290), (15, 41371),

Gene: Shinji_56 Start: 42816, Stop: 43247, Start Num: 7
Candidate Starts for Shinji_56:
(Start: 7 @42816 has 32 MA's), (9, 42945), (11, 42972), (12, 43029), (14, 43083),

Gene: Sixsevenium_60 Start: 43812, Stop: 44243, Start Num: 7
Candidate Starts for Sixsevenium_60:
(Start: 7 @43812 has 32 MA's), (9, 43941), (11, 43968), (14, 44079),

Gene: SmokingBunny_57 Start: 43248, Stop: 43679, Start Num: 7
Candidate Starts for SmokingBunny_57:
(Start: 7 @43248 has 32 MA's), (9, 43377), (11, 43404), (12, 43461), (14, 43515),

Gene: TillyBobJoe_59 Start: 44770, Stop: 45225, Start Num: 7
Candidate Starts for TillyBobJoe_59:
(Start: 7 @44770 has 32 MA's), (9, 44896), (11, 44950), (14, 45061),

Gene: Togo_56 Start: 43248, Stop: 43679, Start Num: 7
Candidate Starts for Togo_56:
(Start: 7 @43248 has 32 MA's), (9, 43377), (11, 43404), (12, 43461), (14, 43515),

Gene: Twister6_60 Start: 43655, Stop: 44086, Start Num: 7
Candidate Starts for Twister6_60:
(Start: 7 @43655 has 32 MA's), (9, 43784), (11, 43811), (12, 43868), (14, 43922),

Gene: Valary_59 Start: 44063, Stop: 44494, Start Num: 7
Candidate Starts for Valary_59:
(Start: 7 @44063 has 32 MA's), (9, 44192), (11, 44219), (12, 44276), (14, 44330),

Gene: VanDeWege_60 Start: 43355, Stop: 43786, Start Num: 7
Candidate Starts for VanDeWege_60:
(Start: 7 @43355 has 32 MA's), (9, 43484), (11, 43511), (12, 43568), (14, 43622),

Gene: Wizard_56 Start: 43261, Stop: 43692, Start Num: 7
Candidate Starts for Wizard_56:
(Start: 7 @43261 has 32 MA's), (9, 43390), (11, 43417), (12, 43474), (14, 43528),

Gene: YungMoney_59 Start: 46924, Stop: 47355, Start Num: 7
Candidate Starts for YungMoney_59:
(Start: 7 @46924 has 32 MA's), (9, 47053), (11, 47080), (14, 47191),