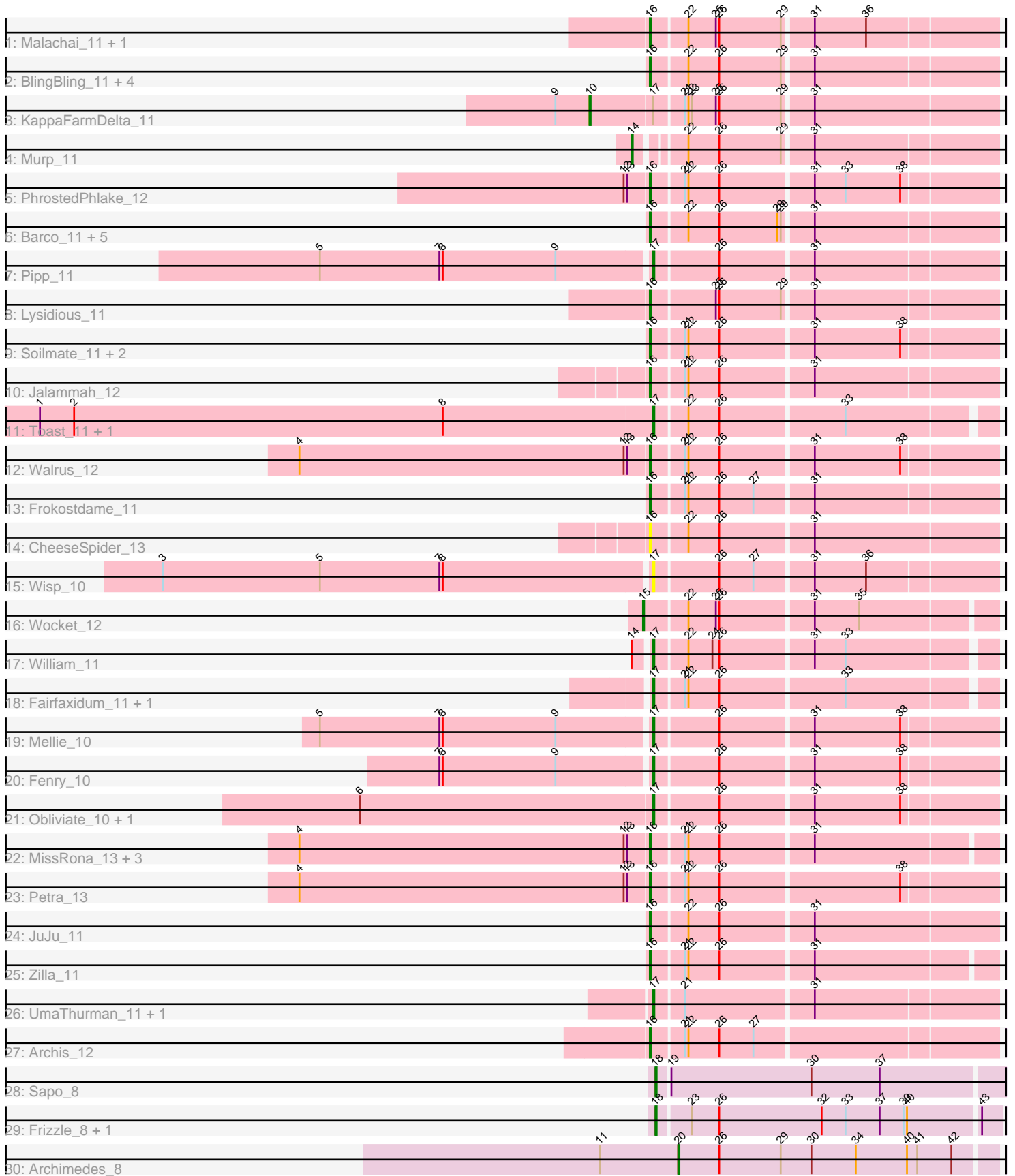


Pham 308751



Note: Tracks are now grouped by subcluster and scaled. Switching in subcluster is indicated by changes in track color. Track scale is now set by default to display the region 30 bp upstream of start 1 to 30 bp downstream of the last possible start. If this default region is judged to be packed too tightly with annotated starts, the track will be further scaled to only show that region of the ORF with annotated starts. This action will be indicated by adding "Zoomed" to the title. For starts, yellow indicates the location of called starts comprised solely of Glimmer/GeneMark auto-annotations, green indicates the location of called starts with at least 1 manual gene annotation.

Pham 308751 Report

This analysis was run 06/27/26 on database version 652.

Pham number 308751 has 50 members, 3 are drafts.

Phages represented in each track:

- Track 1 : Malachai_11, Begonia_11
- Track 2 : BlingBling_11, Hitter_11, CaptainKirk2_11, Delian_11, Utz_11
- Track 3 : KappaFarmDelta_11
- Track 4 : Murp_11
- Track 5 : PhrostedPhlake_12
- Track 6 : Barco_11, MintFen_11, Guacamole_11, JasperJr_11, Zarbodnamra_11, Melba_11
- Track 7 : Pipp_11
- Track 8 : Lysidious_11
- Track 9 : Soilmate_11, Blino_11, CarolAnn_11
- Track 10 : Jalammah_12
- Track 11 : Toast_11, PCoral7_11
- Track 12 : Walrus_12
- Track 13 : Frokostdame_11
- Track 14 : CheeseSpider_13
- Track 15 : Wisp_10
- Track 16 : Wocket_12
- Track 17 : William_11
- Track 18 : Fairfaxidum_11, PrincePatrick_11
- Track 19 : Mellie_10
- Track 20 : Fenry_10
- Track 21 : Obliviate_10, ZiggyZoo_10
- Track 22 : MissRona_13, Blueberry_13, Gambino_13, Azula_13
- Track 23 : Petra_13
- Track 24 : JuJu_11
- Track 25 : Zilla_11
- Track 26 : UmaThurman_11, Samba_11
- Track 27 : Archis_12
- Track 28 : Sapo_8
- Track 29 : Frizzle_8, Ghobes_8
- Track 30 : Archimedes_8

Summary of Final Annotations (See graph section above for start numbers):

The start number called the most often in the published annotations is 16, it was called in 28 of the 47 non-draft genes in the pham.

Genes that call this "Most Annotated" start:

- Archis_12, Azula_13, Barco_11, Begonia_11, BlingBling_11, Blino_11, Blueberry_13, CaptainKirk2_11, CarolAnn_11, CheeseSpider_13, Delian_11, Frokostdame_11, Gambino_13, Guacamole_11, Hitter_11, Jalammah_12, JasperJr_11, JuJu_11, Lysidious_11, Malachai_11, Melba_11, MintFen_11, MissRona_13, Petra_13, PhrostedPhlake_12, Soilmate_11, Utz_11, Walrus_12, Zarbodnamra_11, Zilla_11,

Genes that have the "Most Annotated" start but do not call it:

-

Genes that do not have the "Most Annotated" start:

- Archimedes_8, Fairfaxidum_11, Ferry_10, Frizzle_8, Ghobes_8, KappaFarmDelta_11, Mellie_10, Murp_11, Obliviate_10, PCoral7_11, Pipp_11, PrincePatrick_11, Samba_11, Sapo_8, Toast_11, UmaThurman_11, William_11, Wisp_10, Wocket_12, ZiggyZoo_10,

Summary by start number:

Start 10:

- Found in 1 of 50 (2.0%) of genes in pham
- Manual Annotations of this start: 1 of 47
- Called 100.0% of time when present
- Phage (with cluster) where this start called: KappaFarmDelta_11 (CV),

Start 14:

- Found in 2 of 50 (4.0%) of genes in pham
- Manual Annotations of this start: 1 of 47
- Called 50.0% of time when present
- Phage (with cluster) where this start called: Murp_11 (CV),

Start 15:

- Found in 1 of 50 (2.0%) of genes in pham
- Manual Annotations of this start: 1 of 47
- Called 100.0% of time when present
- Phage (with cluster) where this start called: Wocket_12 (CV),

Start 16:

- Found in 30 of 50 (60.0%) of genes in pham
- Manual Annotations of this start: 28 of 47
- Called 100.0% of time when present
- Phage (with cluster) where this start called: Archis_12 (CV), Azula_13 (CV), Barco_11 (CV), Begonia_11 (CV), BlingBling_11 (CV), Blino_11 (CV), Blueberry_13 (CV), CaptainKirk2_11 (CV), CarolAnn_11 (CV), CheeseSpider_13 (CV), Delian_11 (CV), Frokostdame_11 (CV), Gambino_13 (CV), Guacamole_11 (CV), Hitter_11 (CV), Jalammah_12 (CV), JasperJr_11 (CV), JuJu_11 (CV), Lysidious_11 (CV), Malachai_11 (CV), Melba_11 (CV), MintFen_11 (CV), MissRona_13 (CV), Petra_13 (CV), PhrostedPhlake_12 (CV), Soilmate_11 (CV), Utz_11 (CV), Walrus_12 (CV), Zarbodnamra_11 (CV), Zilla_11 (CV),

Start 17:

- Found in 14 of 50 (28.0%) of genes in pham
- Manual Annotations of this start: 12 of 47
- Called 92.9% of time when present
- Phage (with cluster) where this start called: Fairfaxidum_11 (CV), Fenry_10 (CV), Mellie_10 (CV), Obliviate_10 (CV), PCoral7_11 (CV), Pipp_11 (CV), PrincePatrick_11 (CV), Samba_11 (CV), Toast_11 (CV), UmaThurman_11 (CV), William_11 (CV), Wisp_10 (CV), ZiggyZoo_10 (CV),

Start 18:

- Found in 3 of 50 (6.0%) of genes in pham
- Manual Annotations of this start: 3 of 47
- Called 100.0% of time when present
- Phage (with cluster) where this start called: Frizzle_8 (DA), Ghobes_8 (DA), Sapo_8 (DA),

Start 20:

- Found in 1 of 50 (2.0%) of genes in pham
- Manual Annotations of this start: 1 of 47
- Called 100.0% of time when present
- Phage (with cluster) where this start called: Archimedes_8 (DA),

Summary by clusters:

There are 2 clusters represented in this pham: CV, DA,

Info for manual annotations of cluster CV:

- Start number 10 was manually annotated 1 time for cluster CV.
- Start number 14 was manually annotated 1 time for cluster CV.
- Start number 15 was manually annotated 1 time for cluster CV.
- Start number 16 was manually annotated 28 times for cluster CV.
- Start number 17 was manually annotated 12 times for cluster CV.

Info for manual annotations of cluster DA:

- Start number 18 was manually annotated 3 times for cluster DA.
- Start number 20 was manually annotated 1 time for cluster DA.

Gene Information:

Gene: Archimedes_8 Start: 6366, Stop: 6641, Start Num: 20

Candidate Starts for Archimedes_8:

(11, 6297), (Start: 20 @6366 has 1 MA's), (26, 6402), (29, 6456), (30, 6483), (34, 6522), (40, 6567), (41, 6576), (42, 6606),

Gene: Archis_12 Start: 7799, Stop: 8089, Start Num: 16

Candidate Starts for Archis_12:

(Start: 16 @7799 has 28 MA's), (21, 7826), (22, 7829), (26, 7856), (27, 7886),

Gene: Azula_13 Start: 7934, Stop: 8221, Start Num: 16

Candidate Starts for Azula_13:

(4, 7628), (12, 7913), (13, 7916), (Start: 16 @7934 has 28 MA's), (21, 7961), (22, 7964), (26, 7991), (31, 8069),

Gene: Barco_11 Start: 7587, Stop: 7877, Start Num: 16

Candidate Starts for Barco_11:

(Start: 16 @7587 has 28 MA's), (22, 7617), (26, 7644), (28, 7695), (29, 7698), (31, 7722),

Gene: Begonia_11 Start: 7590, Stop: 7880, Start Num: 16

Candidate Starts for Begonia_11:

(Start: 16 @7590 has 28 MA's), (22, 7620), (25, 7644), (26, 7647), (29, 7701), (31, 7725), (36, 7770),

Gene: BlingBling_11 Start: 7587, Stop: 7877, Start Num: 16

Candidate Starts for BlingBling_11:

(Start: 16 @7587 has 28 MA's), (22, 7617), (26, 7644), (29, 7698), (31, 7722),

Gene: Blino_11 Start: 7487, Stop: 7777, Start Num: 16

Candidate Starts for Blino_11:

(Start: 16 @7487 has 28 MA's), (21, 7514), (22, 7517), (26, 7544), (31, 7622), (38, 7697),

Gene: Blueberry_13 Start: 7934, Stop: 8221, Start Num: 16

Candidate Starts for Blueberry_13:

(4, 7628), (12, 7913), (13, 7916), (Start: 16 @7934 has 28 MA's), (21, 7961), (22, 7964), (26, 7991), (31, 8069),

Gene: CaptainKirk2_11 Start: 7587, Stop: 7880, Start Num: 16

Candidate Starts for CaptainKirk2_11:

(Start: 16 @7587 has 28 MA's), (22, 7617), (26, 7644), (29, 7698), (31, 7722),

Gene: CarolAnn_11 Start: 7486, Stop: 7776, Start Num: 16

Candidate Starts for CarolAnn_11:

(Start: 16 @7486 has 28 MA's), (21, 7513), (22, 7516), (26, 7543), (31, 7621), (38, 7696),

Gene: CheeseSpider_13 Start: 7927, Stop: 8220, Start Num: 16

Candidate Starts for CheeseSpider_13:

(Start: 16 @7927 has 28 MA's), (22, 7957), (26, 7984), (31, 8062),

Gene: Delian_11 Start: 7587, Stop: 7880, Start Num: 16

Candidate Starts for Delian_11:

(Start: 16 @7587 has 28 MA's), (22, 7617), (26, 7644), (29, 7698), (31, 7722),

Gene: Fairfaxidum_11 Start: 7628, Stop: 7909, Start Num: 17

Candidate Starts for Fairfaxidum_11:

(Start: 17 @7628 has 12 MA's), (21, 7652), (22, 7655), (26, 7682), (33, 7787),

Gene: Fenry_10 Start: 7339, Stop: 7626, Start Num: 17

Candidate Starts for Fenry_10:

(7, 7159), (8, 7162), (9, 7261), (Start: 17 @7339 has 12 MA's), (26, 7393), (31, 7471), (38, 7546),

Gene: Frizzle_8 Start: 6422, Stop: 6715, Start Num: 18

Candidate Starts for Frizzle_8:

(Start: 18 @6422 has 3 MA's), (23, 6449), (26, 6473), (32, 6563), (33, 6584), (37, 6614), (39, 6635), (40, 6638), (43, 6698),

Gene: Frokostdame_11 Start: 7582, Stop: 7872, Start Num: 16

Candidate Starts for Frokostdame_11:

(Start: 16 @7582 has 28 MA's), (21, 7609), (22, 7612), (26, 7639), (27, 7669), (31, 7717),

Gene: Gambino_13 Start: 7934, Stop: 8221, Start Num: 16

Candidate Starts for Gambino_13:

(4, 7628), (12, 7913), (13, 7916), (Start: 16 @7934 has 28 MA's), (21, 7961), (22, 7964), (26, 7991), (31, 8069),

Gene: Ghobes_8 Start: 6422, Stop: 6715, Start Num: 18

Candidate Starts for Ghobes_8:

(Start: 18 @6422 has 3 MA's), (23, 6449), (26, 6473), (32, 6563), (33, 6584), (37, 6614), (39, 6635), (40, 6638), (43, 6698),

Gene: Guacamole_11 Start: 7591, Stop: 7881, Start Num: 16

Candidate Starts for Guacamole_11:

(Start: 16 @7591 has 28 MA's), (22, 7621), (26, 7648), (28, 7699), (29, 7702), (31, 7726),

Gene: Hitter_11 Start: 7587, Stop: 7877, Start Num: 16

Candidate Starts for Hitter_11:

(Start: 16 @7587 has 28 MA's), (22, 7617), (26, 7644), (29, 7698), (31, 7722),

Gene: Jalammah_12 Start: 7858, Stop: 8148, Start Num: 16

Candidate Starts for Jalammah_12:

(Start: 16 @7858 has 28 MA's), (21, 7885), (22, 7888), (26, 7915), (31, 7993),

Gene: JasperJr_11 Start: 7591, Stop: 7881, Start Num: 16

Candidate Starts for JasperJr_11:

(Start: 16 @7591 has 28 MA's), (22, 7621), (26, 7648), (28, 7699), (29, 7702), (31, 7726),

Gene: JuJu_11 Start: 7512, Stop: 7805, Start Num: 16

Candidate Starts for JuJu_11:

(Start: 16 @7512 has 28 MA's), (22, 7542), (26, 7569), (31, 7647),

Gene: KappaFarmDelta_11 Start: 7686, Stop: 8030, Start Num: 10

Candidate Starts for KappaFarmDelta_11:

(9, 7656), (Start: 10 @7686 has 1 MA's), (Start: 17 @7740 has 12 MA's), (21, 7764), (22, 7767), (23, 7770), (25, 7791), (26, 7794), (29, 7848), (31, 7872),

Gene: Lysidious_11 Start: 7587, Stop: 7877, Start Num: 16

Candidate Starts for Lysidious_11:

(Start: 16 @7587 has 28 MA's), (25, 7641), (26, 7644), (29, 7698), (31, 7722),

Gene: Malachai_11 Start: 7590, Stop: 7880, Start Num: 16

Candidate Starts for Malachai_11:

(Start: 16 @7590 has 28 MA's), (22, 7620), (25, 7644), (26, 7647), (29, 7701), (31, 7725), (36, 7770),

Gene: Melba_11 Start: 7587, Stop: 7877, Start Num: 16

Candidate Starts for Melba_11:

(Start: 16 @7587 has 28 MA's), (22, 7617), (26, 7644), (28, 7695), (29, 7698), (31, 7722),

Gene: Mellie_10 Start: 7330, Stop: 7617, Start Num: 17

Candidate Starts for Mellie_10:

(5, 7045), (7, 7150), (8, 7153), (9, 7252), (Start: 17 @7330 has 12 MA's), (26, 7384), (31, 7462), (38, 7537),

Gene: MintFen_11 Start: 7587, Stop: 7877, Start Num: 16

Candidate Starts for MintFen_11:

(Start: 16 @7587 has 28 MA's), (22, 7617), (26, 7644), (28, 7695), (29, 7698), (31, 7722),

Gene: MissRona_13 Start: 7934, Stop: 8221, Start Num: 16

Candidate Starts for MissRona_13:

(4, 7628), (12, 7913), (13, 7916), (Start: 16 @7934 has 28 MA's), (21, 7961), (22, 7964), (26, 7991), (31, 8069),

Gene: Murp_11 Start: 7574, Stop: 7870, Start Num: 14

Candidate Starts for Murp_11:

(Start: 14 @7574 has 1 MA's), (22, 7610), (26, 7637), (29, 7691), (31, 7715),

Gene: Obliviate_10 Start: 7359, Stop: 7646, Start Num: 17

Candidate Starts for Obliviate_10:

(6, 7104), (Start: 17 @7359 has 12 MA's), (26, 7413), (31, 7491), (38, 7566),

Gene: PCoral7_11 Start: 7571, Stop: 7852, Start Num: 17

Candidate Starts for PCoral7_11:

(1, 7034), (2, 7064), (8, 7388), (Start: 17 @7571 has 12 MA's), (22, 7598), (26, 7625), (33, 7730),

Gene: Petra_13 Start: 7967, Stop: 8257, Start Num: 16

Candidate Starts for Petra_13:

(4, 7661), (12, 7946), (13, 7949), (Start: 16 @7967 has 28 MA's), (21, 7994), (22, 7997), (26, 8024), (38, 8177),

Gene: PhrostedPhlake_12 Start: 7945, Stop: 8235, Start Num: 16

Candidate Starts for PhrostedPhlake_12:

(12, 7924), (13, 7927), (Start: 16 @7945 has 28 MA's), (21, 7972), (22, 7975), (26, 8002), (31, 8080), (33, 8107), (38, 8155),

Gene: Pipp_11 Start: 7566, Stop: 7853, Start Num: 17

Candidate Starts for Pipp_11:

(5, 7281), (7, 7386), (8, 7389), (9, 7488), (Start: 17 @7566 has 12 MA's), (26, 7620), (31, 7698),

Gene: PrincePatrick_11 Start: 7629, Stop: 7910, Start Num: 17

Candidate Starts for PrincePatrick_11:

(Start: 17 @7629 has 12 MA's), (21, 7653), (22, 7656), (26, 7683), (33, 7788),

Gene: Samba_11 Start: 7698, Stop: 7985, Start Num: 17

Candidate Starts for Samba_11:

(Start: 17 @7698 has 12 MA's), (21, 7722), (31, 7830),

Gene: Sapo_8 Start: 6416, Stop: 6712, Start Num: 18

Candidate Starts for Sapo_8:

(Start: 18 @6416 has 3 MA's), (19, 6425), (30, 6548), (37, 6608),

Gene: Soilmate_11 Start: 7486, Stop: 7776, Start Num: 16

Candidate Starts for Soilmate_11:

(Start: 16 @7486 has 28 MA's), (21, 7513), (22, 7516), (26, 7543), (31, 7621), (38, 7696),

Gene: Toast_11 Start: 7571, Stop: 7852, Start Num: 17

Candidate Starts for Toast_11:

(1, 7034), (2, 7064), (8, 7388), (Start: 17 @7571 has 12 MA's), (22, 7598), (26, 7625), (33, 7730),

Gene: UmaThurman_11 Start: 7697, Stop: 7984, Start Num: 17

Candidate Starts for UmaThurman_11:

(Start: 17 @7697 has 12 MA's), (21, 7721), (31, 7829),

Gene: Utz_11 Start: 7560, Stop: 7850, Start Num: 16

Candidate Starts for Utz_11:

(Start: 16 @7560 has 28 MA's), (22, 7590), (26, 7617), (29, 7671), (31, 7695),

Gene: Walrus_12 Start: 7789, Stop: 8079, Start Num: 16

Candidate Starts for Walrus_12:

(4, 7483), (12, 7768), (13, 7771), (Start: 16 @7789 has 28 MA's), (21, 7816), (22, 7819), (26, 7846), (31, 7924), (38, 7999),

Gene: William_11 Start: 7517, Stop: 7798, Start Num: 17

Candidate Starts for William_11:

(Start: 14 @7505 has 1 MA's), (Start: 17 @7517 has 12 MA's), (22, 7544), (24, 7565), (26, 7571), (31, 7649), (33, 7676),

Gene: Wisp_10 Start: 7330, Stop: 7617, Start Num: 17

Candidate Starts for Wisp_10:

(3, 6907), (5, 7045), (7, 7150), (8, 7153), (Start: 17 @7330 has 12 MA's), (26, 7384), (27, 7414), (31, 7462), (36, 7507),

Gene: Wocket_12 Start: 7810, Stop: 8103, Start Num: 15

Candidate Starts for Wocket_12:

(Start: 15 @7810 has 1 MA's), (22, 7846), (25, 7870), (26, 7873), (31, 7951), (35, 7990),

Gene: Zarbodnamra_11 Start: 7586, Stop: 7876, Start Num: 16

Candidate Starts for Zarbodnamra_11:

(Start: 16 @7586 has 28 MA's), (22, 7616), (26, 7643), (28, 7694), (29, 7697), (31, 7721),

Gene: ZiggyZoo_10 Start: 7359, Stop: 7646, Start Num: 17

Candidate Starts for ZiggyZoo_10:

(6, 7104), (Start: 17 @7359 has 12 MA's), (26, 7413), (31, 7491), (38, 7566),

Gene: Zilla_11 Start: 7639, Stop: 7926, Start Num: 16

Candidate Starts for Zilla_11:

(Start: 16 @7639 has 28 MA's), (21, 7666), (22, 7669), (26, 7696), (31, 7774),