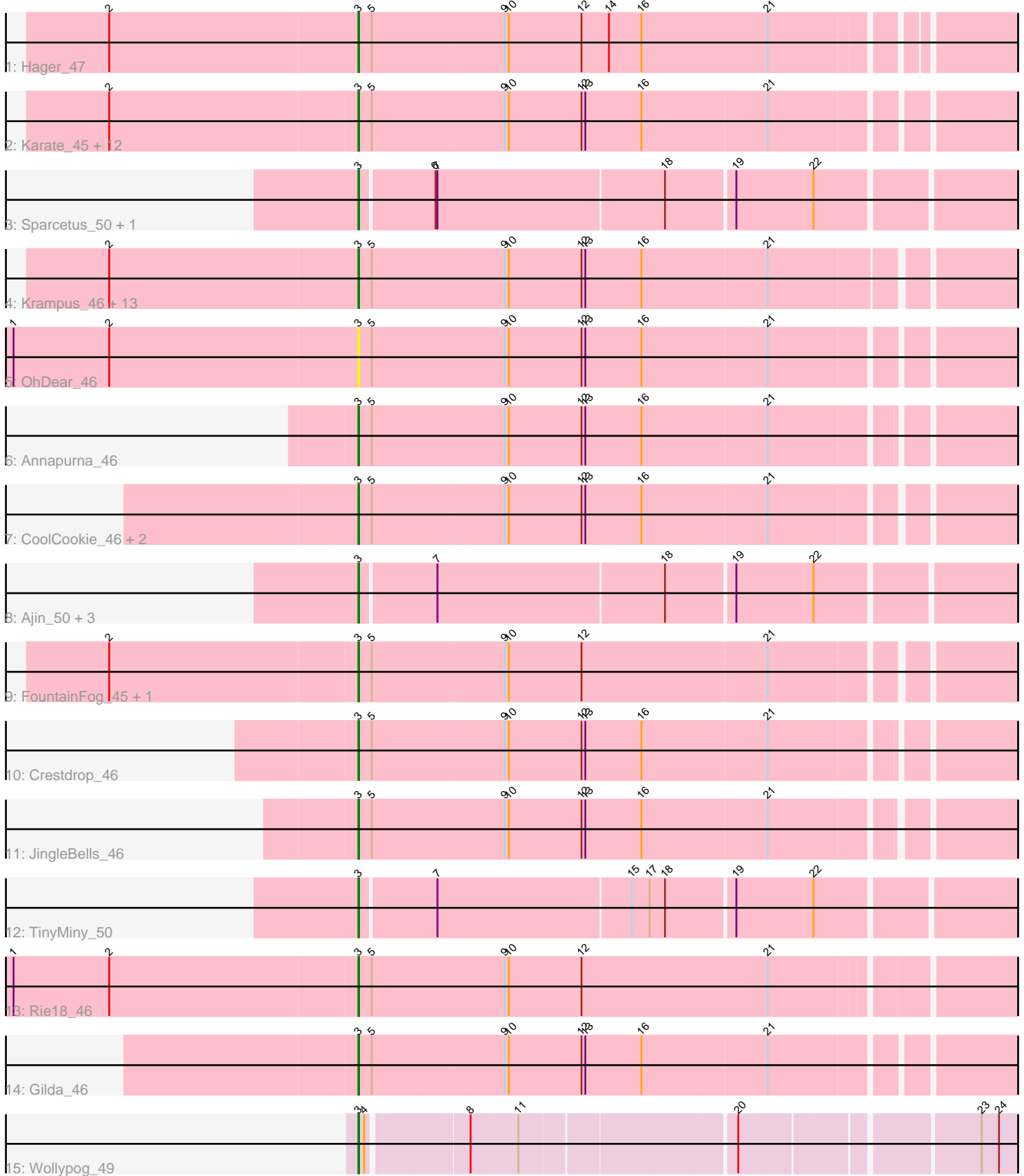


Pham 308792



Note: Tracks are now grouped by subcluster and scaled. Switching in subcluster is indicated by changes in track color. Track scale is now set by default to display the region 30 bp upstream of start 1 to 30 bp downstream of the last possible start. If this default region is judged to be packed too tightly with annotated starts, the track will be further scaled to only show that region of the ORF with annotated starts. This action will be indicated by adding "Zoomed" to the title. For starts, yellow indicates the location of called starts comprised solely of Glimmer/GeneMark auto-annotations, green indicates the location of called starts with at least 1 manual gene annotation.

Pham 308792 Report

This analysis was run 06/27/26 on database version 652.

Pham number 308792 has 47 members, 4 are drafts.

Phages represented in each track:

- Track 1 : Hager_47
- Track 2 : Karate_45, Aesir_45, Erudite_45, Chivey_46, JDawG_45, DannyDe_46, Dauntless_45, MortySmith_44, Haunter_46, Hiddenleaf_46, Tedro_46, Snakehole_46, FreddieHg_46
- Track 3 : Sparcetus_50, RikSengupta_50
- Track 4 : Krampus_46, Pharpay_46, Anakin_46, Tiggy93_46, Rachella_46, Poultruss_45, Neptune_46, OverHedge_46, NarutoRun_46, Cybele_46, SilentWarrior_46, Kate_47, AnnaSerena_46, Artiphact_46
- Track 5 : OhDear_46
- Track 6 : Annapurna_46
- Track 7 : CoolCookie_46, Potty_46, PhunaPhoke_46
- Track 8 : Ajin_50, Kors_50, Bramble_50, LordBart_50
- Track 9 : FountainFog_45, Tongui_46
- Track 10 : Crestdrop_46
- Track 11 : JingleBells_46
- Track 12 : TinyMiny_50
- Track 13 : Rie18_46
- Track 14 : Gilda_46
- Track 15 : Wollypog_49

Summary of Final Annotations (See graph section above for start numbers):

The start number called the most often in the published annotations is 3, it was called in 43 of the 43 non-draft genes in the pham.

Genes that call this "Most Annotated" start:

- Aesir_45, Ajin_50, Anakin_46, AnnaSerena_46, Annapurna_46, Artiphact_46, Bramble_50, Chivey_46, CoolCookie_46, Crestdrop_46, Cybele_46, DannyDe_46, Dauntless_45, Erudite_45, FountainFog_45, FreddieHg_46, Gilda_46, Hager_47, Haunter_46, Hiddenleaf_46, JDawG_45, JingleBells_46, Karate_45, Kate_47, Kors_50, Krampus_46, LordBart_50, MortySmith_44, NarutoRun_46, Neptune_46, OhDear_46, OverHedge_46, Pharpay_46, PhunaPhoke_46, Potty_46, Poultruss_45, Rachella_46, Rie18_46, RikSengupta_50, SilentWarrior_46, Snakehole_46, Sparcetus_50, Tedro_46, Tiggy93_46, TinyMiny_50, Tongui_46, Wollypog_49,

Genes that have the "Most Annotated" start but do not call it:

-

Genes that do not have the "Most Annotated" start:

-

Summary by start number:

Start 3:

- Found in 47 of 47 (100.0%) of genes in pham
- Manual Annotations of this start: 43 of 43
- Called 100.0% of time when present
- Phage (with cluster) where this start called: Aesir_45 (EF), Ajin_50 (EF), Anakin_46 (EF), AnnaSerena_46 (EF), Annapurna_46 (EF), Artiphact_46 (EF), Bramble_50 (EF), Chivey_46 (EF), CoolCookie_46 (EF), Crestdrop_46 (EF), Cybele_46 (EF), DannyDe_46 (EF), Dauntless_45 (EF), Erudite_45 (EF), FountainFog_45 (EF), FreddieHg_46 (EF), Gilda_46 (EF), Hager_47 (EF), Haunter_46 (EF), Hiddenleaf_46 (EF), JDawG_45 (EF), JingleBells_46 (EF), Karate_45 (EF), Kate_47 (EF), Kors_50 (EF), Krampus_46 (EF), LordBart_50 (EF), MortySmith_44 (EF), NarutoRun_46 (EF), Neptune_46 (EF), OhDear_46 (EF), OverHedge_46 (EF), Pharpay_46 (EF), PhunaPhoke_46 (EF), Potty_46 (EF), Poultruss_45 (EF), Rachella_46 (EF), Rie18_46 (EF), RikSengupta_50 (EF), SilentWarrior_46 (EF), Snakehole_46 (EF), Sparcetus_50 (EF), Tedro_46 (EF), Tiggy93_46 (EF), TinyMiny_50 (EF), Tongui_46 (EF), Wollypog_49 (singleton),

Summary by clusters:

There are 2 clusters represented in this pham: singleton, EF,

Info for manual annotations of cluster EF:

- Start number 3 was manually annotated 42 times for cluster EF.

Gene Information:

Gene: Aesir_45 Start: 30636, Stop: 31667, Start Num: 3

Candidate Starts for Aesir_45:

(2, 30252), (Start: 3 @30636 has 43 MA's), (5, 30657), (9, 30861), (10, 30867), (12, 30981), (13, 30987), (16, 31074), (21, 31266),

Gene: Ajin_50 Start: 31955, Stop: 32980, Start Num: 3

Candidate Starts for Ajin_50:

(Start: 3 @31955 has 43 MA's), (7, 32069), (18, 32417), (19, 32519), (22, 32636),

Gene: Anakin_46 Start: 30992, Stop: 32026, Start Num: 3

Candidate Starts for Anakin_46:

(2, 30605), (Start: 3 @30992 has 43 MA's), (5, 31013), (9, 31217), (10, 31223), (12, 31337), (13, 31343), (16, 31430), (21, 31622),

Gene: AnnaSerena_46 Start: 31027, Stop: 32061, Start Num: 3

Candidate Starts for AnnaSerena_46:

(2, 30640), (Start: 3 @31027 has 43 MA's), (5, 31048), (9, 31252), (10, 31258), (12, 31372), (13, 31378), (16, 31465), (21, 31657),

Gene: Annapurna_46 Start: 30265, Stop: 31296, Start Num: 3

Candidate Starts for Annapurna_46:

(Start: 3 @30265 has 43 MA's), (5, 30286), (9, 30490), (10, 30496), (12, 30610), (13, 30616), (16, 30703), (21, 30895),

Gene: Artiphact_46 Start: 31016, Stop: 32050, Start Num: 3

Candidate Starts for Artiphact_46:

(2, 30629), (Start: 3 @31016 has 43 MA's), (5, 31037), (9, 31241), (10, 31247), (12, 31361), (13, 31367), (16, 31454), (21, 31646),

Gene: Bramble_50 Start: 32004, Stop: 33029, Start Num: 3

Candidate Starts for Bramble_50:

(Start: 3 @32004 has 43 MA's), (7, 32118), (18, 32466), (19, 32568), (22, 32685),

Gene: Chivey_46 Start: 30214, Stop: 31257, Start Num: 3

Candidate Starts for Chivey_46:

(2, 29830), (Start: 3 @30214 has 43 MA's), (5, 30235), (9, 30439), (10, 30445), (12, 30559), (13, 30565), (16, 30652), (21, 30844),

Gene: CoolCookie_46 Start: 31022, Stop: 32053, Start Num: 3

Candidate Starts for CoolCookie_46:

(Start: 3 @31022 has 43 MA's), (5, 31043), (9, 31247), (10, 31253), (12, 31367), (13, 31373), (16, 31460), (21, 31652),

Gene: Crestdrop_46 Start: 30245, Stop: 31276, Start Num: 3

Candidate Starts for Crestdrop_46:

(Start: 3 @30245 has 43 MA's), (5, 30266), (9, 30470), (10, 30476), (12, 30590), (13, 30596), (16, 30683), (21, 30875),

Gene: Cybele_46 Start: 30992, Stop: 32026, Start Num: 3

Candidate Starts for Cybele_46:

(2, 30605), (Start: 3 @30992 has 43 MA's), (5, 31013), (9, 31217), (10, 31223), (12, 31337), (13, 31343), (16, 31430), (21, 31622),

Gene: DannyDe_46 Start: 30220, Stop: 31251, Start Num: 3

Candidate Starts for DannyDe_46:

(2, 29836), (Start: 3 @30220 has 43 MA's), (5, 30241), (9, 30445), (10, 30451), (12, 30565), (13, 30571), (16, 30658), (21, 30850),

Gene: Dauntless_45 Start: 30572, Stop: 31603, Start Num: 3

Candidate Starts for Dauntless_45:

(2, 30188), (Start: 3 @30572 has 43 MA's), (5, 30593), (9, 30797), (10, 30803), (12, 30917), (13, 30923), (16, 31010), (21, 31202),

Gene: Erudite_45 Start: 30572, Stop: 31603, Start Num: 3

Candidate Starts for Erudite_45:

(2, 30188), (Start: 3 @30572 has 43 MA's), (5, 30593), (9, 30797), (10, 30803), (12, 30917), (13, 30923), (16, 31010), (21, 31202),

Gene: FountainFog_45 Start: 30256, Stop: 31287, Start Num: 3

Candidate Starts for FountainFog_45:

(2, 29872), (Start: 3 @30256 has 43 MA's), (5, 30277), (9, 30481), (10, 30487), (12, 30601), (21, 30886),

Gene: FreddieHg_46 Start: 30230, Stop: 31267, Start Num: 3

Candidate Starts for FreddieHg_46:

(2, 29846), (Start: 3 @30230 has 43 MA's), (5, 30251), (9, 30455), (10, 30461), (12, 30575), (13, 30581), (16, 30668), (21, 30860),

Gene: Gilda_46 Start: 31013, Stop: 32047, Start Num: 3

Candidate Starts for Gilda_46:

(Start: 3 @31013 has 43 MA's), (5, 31034), (9, 31238), (10, 31244), (12, 31358), (13, 31364), (16, 31451), (21, 31643),

Gene: Hager_47 Start: 30441, Stop: 31469, Start Num: 3

Candidate Starts for Hager_47:

(2, 30054), (Start: 3 @30441 has 43 MA's), (5, 30462), (9, 30666), (10, 30672), (12, 30786), (14, 30828), (16, 30879), (21, 31074),

Gene: Haunter_46 Start: 30396, Stop: 31430, Start Num: 3

Candidate Starts for Haunter_46:

(2, 30012), (Start: 3 @30396 has 43 MA's), (5, 30417), (9, 30621), (10, 30627), (12, 30741), (13, 30747), (16, 30834), (21, 31026),

Gene: Hiddenleaf_46 Start: 30214, Stop: 31257, Start Num: 3

Candidate Starts for Hiddenleaf_46:

(2, 29830), (Start: 3 @30214 has 43 MA's), (5, 30235), (9, 30439), (10, 30445), (12, 30559), (13, 30565), (16, 30652), (21, 30844),

Gene: JDawG_45 Start: 30631, Stop: 31662, Start Num: 3

Candidate Starts for JDawG_45:

(2, 30247), (Start: 3 @30631 has 43 MA's), (5, 30652), (9, 30856), (10, 30862), (12, 30976), (13, 30982), (16, 31069), (21, 31261),

Gene: JingleBells_46 Start: 30365, Stop: 31393, Start Num: 3

Candidate Starts for JingleBells_46:

(Start: 3 @30365 has 43 MA's), (5, 30386), (9, 30590), (10, 30596), (12, 30710), (13, 30716), (16, 30803), (21, 30995),

Gene: Karate_45 Start: 31014, Stop: 32048, Start Num: 3

Candidate Starts for Karate_45:

(2, 30630), (Start: 3 @31014 has 43 MA's), (5, 31035), (9, 31239), (10, 31245), (12, 31359), (13, 31365), (16, 31452), (21, 31644),

Gene: Kate_47 Start: 31024, Stop: 32058, Start Num: 3

Candidate Starts for Kate_47:

(2, 30637), (Start: 3 @31024 has 43 MA's), (5, 31045), (9, 31249), (10, 31255), (12, 31369), (13, 31375), (16, 31462), (21, 31654),

Gene: Kors_50 Start: 32032, Stop: 33069, Start Num: 3

Candidate Starts for Kors_50:

(Start: 3 @32032 has 43 MA's), (7, 32146), (18, 32494), (19, 32596), (22, 32713),

Gene: Krampus_46 Start: 31024, Stop: 32061, Start Num: 3

Candidate Starts for Krampus_46:

(2, 30637), (Start: 3 @31024 has 43 MA's), (5, 31045), (9, 31249), (10, 31255), (12, 31369), (13, 31375), (16, 31462), (21, 31654),

Gene: LordBart_50 Start: 31941, Stop: 32966, Start Num: 3

Candidate Starts for LordBart_50:

(Start: 3 @31941 has 43 MA's), (7, 32055), (18, 32403), (19, 32505), (22, 32622),

Gene: MortySmith_44 Start: 30049, Stop: 31080, Start Num: 3

Candidate Starts for MortySmith_44:

(2, 29665), (Start: 3 @30049 has 43 MA's), (5, 30070), (9, 30274), (10, 30280), (12, 30394), (13, 30400), (16, 30487), (21, 30679),

Gene: NarutoRun_46 Start: 30992, Stop: 32026, Start Num: 3

Candidate Starts for NarutoRun_46:

(2, 30605), (Start: 3 @30992 has 43 MA's), (5, 31013), (9, 31217), (10, 31223), (12, 31337), (13, 31343), (16, 31430), (21, 31622),

Gene: Neptune_46 Start: 30992, Stop: 32026, Start Num: 3

Candidate Starts for Neptune_46:

(2, 30605), (Start: 3 @30992 has 43 MA's), (5, 31013), (9, 31217), (10, 31223), (12, 31337), (13, 31343), (16, 31430), (21, 31622),

Gene: OhDear_46 Start: 30990, Stop: 32024, Start Num: 3

Candidate Starts for OhDear_46:

(1, 30453), (2, 30603), (Start: 3 @30990 has 43 MA's), (5, 31011), (9, 31215), (10, 31221), (12, 31335), (13, 31341), (16, 31428), (21, 31620),

Gene: OverHedge_46 Start: 30982, Stop: 32016, Start Num: 3

Candidate Starts for OverHedge_46:

(2, 30595), (Start: 3 @30982 has 43 MA's), (5, 31003), (9, 31207), (10, 31213), (12, 31327), (13, 31333), (16, 31420), (21, 31612),

Gene: Pharpay_46 Start: 31037, Stop: 32071, Start Num: 3

Candidate Starts for Pharpay_46:

(2, 30650), (Start: 3 @31037 has 43 MA's), (5, 31058), (9, 31262), (10, 31268), (12, 31382), (13, 31388), (16, 31475), (21, 31667),

Gene: PhunaPhoke_46 Start: 31010, Stop: 32041, Start Num: 3

Candidate Starts for PhunaPhoke_46:

(Start: 3 @31010 has 43 MA's), (5, 31031), (9, 31235), (10, 31241), (12, 31355), (13, 31361), (16, 31448), (21, 31640),

Gene: Potty_46 Start: 31015, Stop: 32046, Start Num: 3

Candidate Starts for Potty_46:

(Start: 3 @31015 has 43 MA's), (5, 31036), (9, 31240), (10, 31246), (12, 31360), (13, 31366), (16, 31453), (21, 31645),

Gene: Poultruss_45 Start: 31330, Stop: 32364, Start Num: 3

Candidate Starts for Poultruss_45:

(2, 30943), (Start: 3 @31330 has 43 MA's), (5, 31351), (9, 31555), (10, 31561), (12, 31675), (13, 31681), (16, 31768), (21, 31960),

Gene: Rachella_46 Start: 31018, Stop: 32052, Start Num: 3

Candidate Starts for Rachella_46:

(2, 30631), (Start: 3 @31018 has 43 MA's), (5, 31039), (9, 31243), (10, 31249), (12, 31363), (13, 31369), (16, 31456), (21, 31648),

Gene: Rie18_46 Start: 30512, Stop: 31552, Start Num: 3

Candidate Starts for Rie18_46:

(1, 29978), (2, 30128), (Start: 3 @30512 has 43 MA's), (5, 30533), (9, 30737), (10, 30743), (12, 30857), (21, 31145),

Gene: RikSengupta_50 Start: 32069, Stop: 33094, Start Num: 3

Candidate Starts for RikSengupta_50:

(Start: 3 @32069 has 43 MA's), (6, 32180), (7, 32183), (18, 32531), (19, 32633), (22, 32750),

Gene: SilentWarrior_46 Start: 30230, Stop: 31261, Start Num: 3

Candidate Starts for SilentWarrior_46:

(2, 29843), (Start: 3 @30230 has 43 MA's), (5, 30251), (9, 30455), (10, 30461), (12, 30575), (13, 30581), (16, 30668), (21, 30860),

Gene: Snakehole_46 Start: 30192, Stop: 31235, Start Num: 3

Candidate Starts for Snakehole_46:

(2, 29808), (Start: 3 @30192 has 43 MA's), (5, 30213), (9, 30417), (10, 30423), (12, 30537), (13, 30543), (16, 30630), (21, 30822),

Gene: Sparcetus_50 Start: 31946, Stop: 32971, Start Num: 3

Candidate Starts for Sparcetus_50:

(Start: 3 @31946 has 43 MA's), (6, 32057), (7, 32060), (18, 32408), (19, 32510), (22, 32627),

Gene: Tedro_46 Start: 30446, Stop: 31486, Start Num: 3

Candidate Starts for Tedro_46:

(2, 30062), (Start: 3 @30446 has 43 MA's), (5, 30467), (9, 30671), (10, 30677), (12, 30791), (13, 30797), (16, 30884), (21, 31076),

Gene: Tiggy93_46 Start: 31021, Stop: 32052, Start Num: 3

Candidate Starts for Tiggy93_46:

(2, 30634), (Start: 3 @31021 has 43 MA's), (5, 31042), (9, 31246), (10, 31252), (12, 31366), (13, 31372), (16, 31459), (21, 31651),

Gene: TinyMiny_50 Start: 31967, Stop: 32992, Start Num: 3

Candidate Starts for TinyMiny_50:

(Start: 3 @31967 has 43 MA's), (7, 32081), (15, 32378), (17, 32405), (18, 32429), (19, 32531), (22, 32648),

Gene: Tongui_46 Start: 30566, Stop: 31612, Start Num: 3

Candidate Starts for Tongui_46:

(2, 30182), (Start: 3 @30566 has 43 MA's), (5, 30587), (9, 30791), (10, 30797), (12, 30911), (21, 31199),

Gene: Wollypog_49 Start: 35619, Stop: 36602, Start Num: 3

Candidate Starts for Wollypog_49:

(Start: 3 @35619 has 43 MA's), (4, 35628), (8, 35772), (11, 35844), (20, 36162), (23, 36501), (24, 36528),

