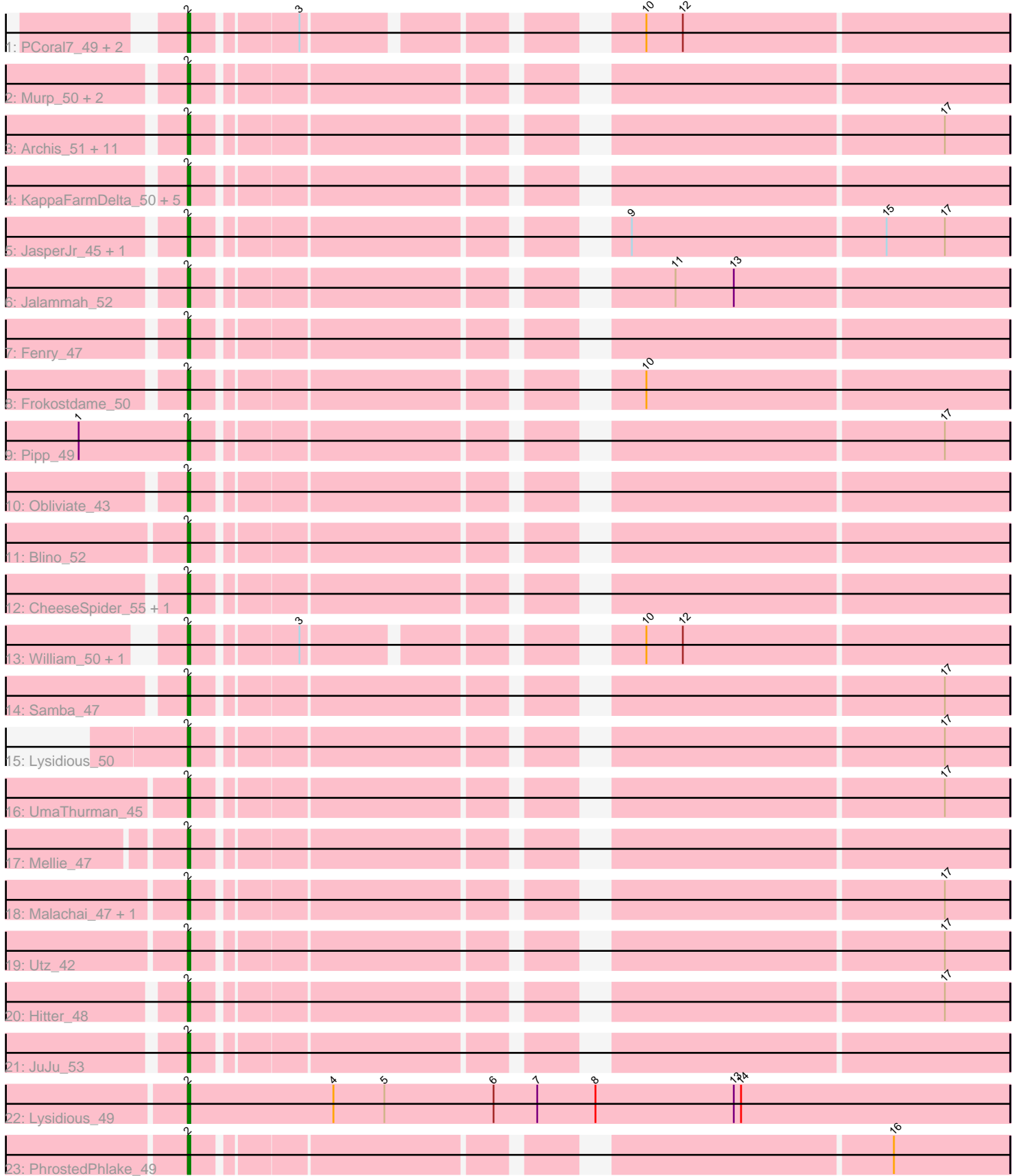


Pham 308794



Note: Tracks are now grouped by subcluster and scaled. Switching in subcluster is indicated by changes in track color. Track scale is now set by default to display the region 30 bp upstream of start 1 to 30 bp downstream of the last possible start. If this default region is judged to be packed too tightly with annotated starts, the track will be further scaled to only show that region of the ORF with annotated starts. This action will be indicated by adding "Zoomed" to the title. For starts, yellow indicates the location of called starts comprised solely of Glimmer/GeneMark auto-annotations, green indicates the location of called starts with at least 1 manual gene annotation.

## Pham 308794 Report

This analysis was run 06/27/26 on database version 652.

Pham number 308794 has 47 members, 3 are drafts.

Phages represented in each track:

- Track 1 : PCoral7\_49, Toast\_49, Fairfaxidum\_50
- Track 2 : Murp\_50, Soilmate\_54, CarolAnn\_51
- Track 3 : Archis\_51, Melba\_47, CaptainKirk2\_48, Zilla\_46, Petra\_44, BlingBling\_45, Zarbodnamra\_47, Barco\_46, Wisp\_47, MintFen\_48, Delian\_51, Walrus\_46
- Track 4 : KappaFarmDelta\_50, Azula\_50, Blueberry\_49, MissRona\_50, ZiggyZoo\_49, Gambino\_52
- Track 5 : JasperJr\_45, Guacamole\_45
- Track 6 : Jalammah\_52
- Track 7 : Fenry\_47
- Track 8 : Frokostdame\_50
- Track 9 : Pipp\_49
- Track 10 : Obliviate\_43
- Track 11 : Blino\_52
- Track 12 : CheeseSpider\_55, Wocket\_49
- Track 13 : William\_50, PrincePatrick\_48
- Track 14 : Samba\_47
- Track 15 : Lysidious\_50
- Track 16 : UmaThurman\_45
- Track 17 : Mellie\_47
- Track 18 : Malachai\_47, Begonia\_47
- Track 19 : Utz\_42
- Track 20 : Hitter\_48
- Track 21 : JuJu\_53
- Track 22 : Lysidious\_49
- Track 23 : PhrostedPhlake\_49

### ***Summary of Final Annotations (See graph section above for start numbers):***

The start number called the most often in the published annotations is 2, it was called in 44 of the 44 non-draft genes in the pham.

Genes that call this "Most Annotated" start:

- Archis\_51, Azula\_50, Barco\_46, Begonia\_47, BlingBling\_45, Blino\_52, Blueberry\_49, CaptainKirk2\_48, CarolAnn\_51, CheeseSpider\_55, Delian\_51,

Fairfaxidum\_50, Fenry\_47, Frokostdame\_50, Gambino\_52, Guacamole\_45, Hitter\_48, Jalammah\_52, JasperJr\_45, JuJu\_53, KappaFarmDelta\_50, Lysidious\_49, Lysidious\_50, Malachai\_47, Melba\_47, Mellie\_47, MintFen\_48, MissRona\_50, Murp\_50, Oblivate\_43, PCoral7\_49, Petra\_44, PhrostedPhlake\_49, Pipp\_49, PrincePatrick\_48, Samba\_47, Soilmate\_54, Toast\_49, UmaThurman\_45, Utz\_42, Walrus\_46, William\_50, Wisp\_47, Wocket\_49, Zarbodnamra\_47, ZiggyZoo\_49, Zilla\_46,

Genes that have the "Most Annotated" start but do not call it:

- 

Genes that do not have the "Most Annotated" start:

- 

### Summary by start number:

Start 2:

- Found in 47 of 47 ( 100.0% ) of genes in pham
- Manual Annotations of this start: 44 of 44
- Called 100.0% of time when present
- Phage (with cluster) where this start called: Archis\_51 (CV), Azula\_50 (CV), Barco\_46 (CV), Begonia\_47 (CV), BlingBling\_45 (CV), Blino\_52 (CV), Blueberry\_49 (CV), CaptainKirk2\_48 (CV), CarolAnn\_51 (CV), CheeseSpider\_55 (CV), Delian\_51 (CV), Fairfaxidum\_50 (CV), Fenry\_47 (CV), Frokostdame\_50 (CV), Gambino\_52 (CV), Guacamole\_45 (CV), Hitter\_48 (CV), Jalammah\_52 (CV), JasperJr\_45 (CV), JuJu\_53 (CV), KappaFarmDelta\_50 (CV), Lysidious\_49 (CV), Lysidious\_50 (CV), Malachai\_47 (CV), Melba\_47 (CV), Mellie\_47 (CV), MintFen\_48 (CV), MissRona\_50 (CV), Murp\_50 (CV), Oblivate\_43 (CV), PCoral7\_49 (CV), Petra\_44 (CV), PhrostedPhlake\_49 (CV), Pipp\_49 (CV), PrincePatrick\_48 (CV), Samba\_47 (CV), Soilmate\_54 (CV), Toast\_49 (CV), UmaThurman\_45 (CV), Utz\_42 (CV), Walrus\_46 (CV), William\_50 (CV), Wisp\_47 (CV), Wocket\_49 (CV), Zarbodnamra\_47 (CV), ZiggyZoo\_49 (CV), Zilla\_46 (CV),

### Summary by clusters:

There is one cluster represented in this pham: CV

Info for manual annotations of cluster CV:

- Start number 2 was manually annotated 44 times for cluster CV.

### Gene Information:

Gene: Archis\_51 Start: 34604, Stop: 34906, Start Num: 2

Candidate Starts for Archis\_51:

(Start: 2 @34604 has 44 MA's), (17, 34880),

Gene: Azula\_50 Start: 36509, Stop: 36811, Start Num: 2

Candidate Starts for Azula\_50:

(Start: 2 @36509 has 44 MA's),

Gene: Barco\_46 Start: 33654, Stop: 33956, Start Num: 2

Candidate Starts for Barco\_46:  
(Start: 2 @33654 has 44 MA's), (17, 33930),

Gene: Begonia\_47 Start: 36633, Stop: 36935, Start Num: 2  
Candidate Starts for Begonia\_47:  
(Start: 2 @36633 has 44 MA's), (17, 36909),

Gene: BlingBling\_45 Start: 34617, Stop: 34919, Start Num: 2  
Candidate Starts for BlingBling\_45:  
(Start: 2 @34617 has 44 MA's), (17, 34893),

Gene: Blino\_52 Start: 39811, Stop: 40113, Start Num: 2  
Candidate Starts for Blino\_52:  
(Start: 2 @39811 has 44 MA's),

Gene: Blueberry\_49 Start: 36509, Stop: 36811, Start Num: 2  
Candidate Starts for Blueberry\_49:  
(Start: 2 @36509 has 44 MA's),

Gene: CaptainKirk2\_48 Start: 33902, Stop: 34204, Start Num: 2  
Candidate Starts for CaptainKirk2\_48:  
(Start: 2 @33902 has 44 MA's), (17, 34178),

Gene: CarolAnn\_51 Start: 39810, Stop: 40112, Start Num: 2  
Candidate Starts for CarolAnn\_51:  
(Start: 2 @39810 has 44 MA's),

Gene: CheeseSpider\_55 Start: 35584, Stop: 35886, Start Num: 2  
Candidate Starts for CheeseSpider\_55:  
(Start: 2 @35584 has 44 MA's),

Gene: Delian\_51 Start: 33900, Stop: 34202, Start Num: 2  
Candidate Starts for Delian\_51:  
(Start: 2 @33900 has 44 MA's), (17, 34176),

Gene: Fairfaxidum\_50 Start: 36644, Stop: 36940, Start Num: 2  
Candidate Starts for Fairfaxidum\_50:  
(Start: 2 @36644 has 44 MA's), (3, 36683), (10, 36794), (12, 36809),

Gene: Fenry\_47 Start: 35697, Stop: 35999, Start Num: 2  
Candidate Starts for Fenry\_47:  
(Start: 2 @35697 has 44 MA's),

Gene: Frokostdame\_50 Start: 36320, Stop: 36622, Start Num: 2  
Candidate Starts for Frokostdame\_50:  
(Start: 2 @36320 has 44 MA's), (10, 36476),

Gene: Gambino\_52 Start: 36509, Stop: 36811, Start Num: 2  
Candidate Starts for Gambino\_52:  
(Start: 2 @36509 has 44 MA's),

Gene: Guacamole\_45 Start: 34051, Stop: 34353, Start Num: 2  
Candidate Starts for Guacamole\_45:

(Start: 2 @34051 has 44 MA's), (9, 34201), (15, 34303), (17, 34327),

Gene: Hitter\_48 Start: 33696, Stop: 33998, Start Num: 2

Candidate Starts for Hitter\_48:

(Start: 2 @33696 has 44 MA's), (17, 33972),

Gene: Jalammah\_52 Start: 37013, Stop: 37315, Start Num: 2

Candidate Starts for Jalammah\_52:

(Start: 2 @37013 has 44 MA's), (11, 37181), (13, 37205),

Gene: JasperJr\_45 Start: 34051, Stop: 34353, Start Num: 2

Candidate Starts for JasperJr\_45:

(Start: 2 @34051 has 44 MA's), (9, 34201), (15, 34303), (17, 34327),

Gene: JuJu\_53 Start: 37667, Stop: 37969, Start Num: 2

Candidate Starts for JuJu\_53:

(Start: 2 @37667 has 44 MA's),

Gene: KappaFarmDelta\_50 Start: 34633, Stop: 34935, Start Num: 2

Candidate Starts for KappaFarmDelta\_50:

(Start: 2 @34633 has 44 MA's),

Gene: Lysidious\_50 Start: 36410, Stop: 36712, Start Num: 2

Candidate Starts for Lysidious\_50:

(Start: 2 @36410 has 44 MA's), (17, 36686),

Gene: Lysidious\_49 Start: 36075, Stop: 36413, Start Num: 2

Candidate Starts for Lysidious\_49:

(Start: 2 @36075 has 44 MA's), (4, 36135), (5, 36156), (6, 36201), (7, 36219), (8, 36243), (13, 36300), (14, 36303),

Gene: Malachai\_47 Start: 36633, Stop: 36935, Start Num: 2

Candidate Starts for Malachai\_47:

(Start: 2 @36633 has 44 MA's), (17, 36909),

Gene: Melba\_47 Start: 34442, Stop: 34744, Start Num: 2

Candidate Starts for Melba\_47:

(Start: 2 @34442 has 44 MA's), (17, 34718),

Gene: Mellie\_47 Start: 34525, Stop: 34827, Start Num: 2

Candidate Starts for Mellie\_47:

(Start: 2 @34525 has 44 MA's),

Gene: MintFen\_48 Start: 34516, Stop: 34818, Start Num: 2

Candidate Starts for MintFen\_48:

(Start: 2 @34516 has 44 MA's), (17, 34792),

Gene: MissRona\_50 Start: 36510, Stop: 36812, Start Num: 2

Candidate Starts for MissRona\_50:

(Start: 2 @36510 has 44 MA's),

Gene: Murp\_50 Start: 38079, Stop: 38381, Start Num: 2

Candidate Starts for Murp\_50:

(Start: 2 @38079 has 44 MA's),

Gene: Obliviate\_43 Start: 32292, Stop: 32594, Start Num: 2

Candidate Starts for Obliviate\_43:

(Start: 2 @32292 has 44 MA's),

Gene: PCoral7\_49 Start: 36061, Stop: 36357, Start Num: 2

Candidate Starts for PCoral7\_49:

(Start: 2 @36061 has 44 MA's), (3, 36100), (10, 36211), (12, 36226),

Gene: Petra\_44 Start: 32650, Stop: 32952, Start Num: 2

Candidate Starts for Petra\_44:

(Start: 2 @32650 has 44 MA's), (17, 32926),

Gene: PhrostedPhlake\_49 Start: 33964, Stop: 34266, Start Num: 2

Candidate Starts for PhrostedPhlake\_49:

(Start: 2 @33964 has 44 MA's), (16, 34219),

Gene: Pipp\_49 Start: 34709, Stop: 35011, Start Num: 2

Candidate Starts for Pipp\_49:

(1, 34664), (Start: 2 @34709 has 44 MA's), (17, 34985),

Gene: PrincePatrick\_48 Start: 34416, Stop: 34712, Start Num: 2

Candidate Starts for PrincePatrick\_48:

(Start: 2 @34416 has 44 MA's), (3, 34455), (10, 34566), (12, 34581),

Gene: Samba\_47 Start: 36729, Stop: 37031, Start Num: 2

Candidate Starts for Samba\_47:

(Start: 2 @36729 has 44 MA's), (17, 37005),

Gene: Soilmate\_54 Start: 39810, Stop: 40112, Start Num: 2

Candidate Starts for Soilmate\_54:

(Start: 2 @39810 has 44 MA's),

Gene: Toast\_49 Start: 36061, Stop: 36357, Start Num: 2

Candidate Starts for Toast\_49:

(Start: 2 @36061 has 44 MA's), (3, 36100), (10, 36211), (12, 36226),

Gene: UmaThurman\_45 Start: 34786, Stop: 35088, Start Num: 2

Candidate Starts for UmaThurman\_45:

(Start: 2 @34786 has 44 MA's), (17, 35062),

Gene: Utz\_42 Start: 35422, Stop: 35724, Start Num: 2

Candidate Starts for Utz\_42:

(Start: 2 @35422 has 44 MA's), (17, 35698),

Gene: Walrus\_46 Start: 33825, Stop: 34127, Start Num: 2

Candidate Starts for Walrus\_46:

(Start: 2 @33825 has 44 MA's), (17, 34101),

Gene: William\_50 Start: 36100, Stop: 36396, Start Num: 2

Candidate Starts for William\_50:

(Start: 2 @36100 has 44 MA's), (3, 36139), (10, 36250), (12, 36265),

Gene: Wisp\_47 Start: 35650, Stop: 35952, Start Num: 2  
Candidate Starts for Wisp\_47:  
(Start: 2 @35650 has 44 MA's), (17, 35926),

Gene: Wocket\_49 Start: 34800, Stop: 35102, Start Num: 2  
Candidate Starts for Wocket\_49:  
(Start: 2 @34800 has 44 MA's),

Gene: Zarbodnamra\_47 Start: 33924, Stop: 34226, Start Num: 2  
Candidate Starts for Zarbodnamra\_47:  
(Start: 2 @33924 has 44 MA's), (17, 34200),

Gene: ZiggyZoo\_49 Start: 36697, Stop: 36999, Start Num: 2  
Candidate Starts for ZiggyZoo\_49:  
(Start: 2 @36697 has 44 MA's),

Gene: Zilla\_46 Start: 33671, Stop: 33973, Start Num: 2  
Candidate Starts for Zilla\_46:  
(Start: 2 @33671 has 44 MA's), (17, 33947),