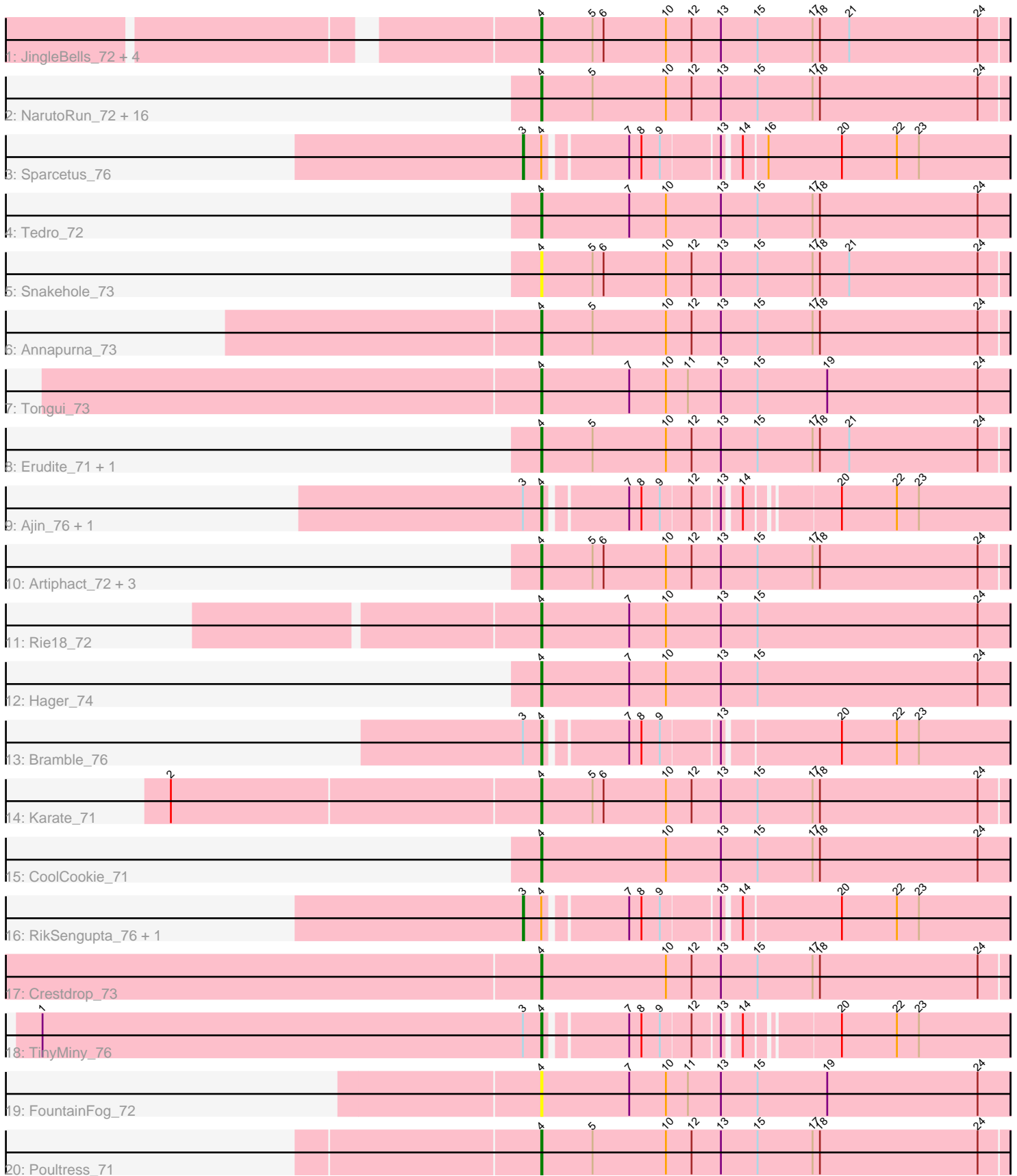


Pham 308800



Note: Tracks are now grouped by subcluster and scaled. Switching in subcluster is indicated by changes in track color. Track scale is now set by default to display the region 30 bp upstream of start 1 to 30 bp downstream of the last possible start. If this default region is judged to be packed too tightly with annotated starts, the track will be further scaled to only show that region of the ORF with annotated starts. This action will be indicated by adding "Zoomed" to the title. For starts, yellow indicates the location of called starts comprised solely of Glimmer/GeneMark auto-annotations, green indicates the location of called starts with at least 1 manual gene annotation.

Pham 308800 Report

This analysis was run 06/27/26 on database version 652.

Pham number 308800 has 46 members, 4 are drafts.

Phages represented in each track:

- Track 1 : JingleBells_72, MortySmith_70, Aesir_71, SilentWarrior_73, DannyDe_73
- Track 2 : NarutoRun_72, PhunaPhoke_72, Kate_72, JDawG_71, Cybele_72, OverHedge_71, AnnaSerena_72, Hiddenleaf_73, FreddieHg_73, Gilda_72, OhDear_72, Chivey_73, Potty_71, Krampus_72, Anakin_72, Rachella_72, Neptune_72
- Track 3 : Sparcetus_76
- Track 4 : Tedro_72
- Track 5 : Snakehole_73
- Track 6 : Annapurna_73
- Track 7 : Tongui_73
- Track 8 : Erudite_71, Dauntless_71
- Track 9 : Ajin_76, LordBart_76
- Track 10 : Artiphact_72, Pharpay_71, Tiggy93_71, Haunter_73
- Track 11 : Rie18_72
- Track 12 : Hager_74
- Track 13 : Bramble_76
- Track 14 : Karate_71
- Track 15 : CoolCookie_71
- Track 16 : RikSengupta_76, Kors_76
- Track 17 : Crestdrop_73
- Track 18 : TinyMiny_76
- Track 19 : FountainFog_72
- Track 20 : Poultruss_71

Summary of Final Annotations (See graph section above for start numbers):

The start number called the most often in the published annotations is 4, it was called in 39 of the 42 non-draft genes in the pham.

Genes that call this "Most Annotated" start:

- Aesir_71, Ajin_76, Anakin_72, AnnaSerena_72, Annapurna_73, Artiphact_72, Bramble_76, Chivey_73, CoolCookie_71, Crestdrop_73, Cybele_72, DannyDe_73, Dauntless_71, Erudite_71, FountainFog_72, FreddieHg_73, Gilda_72, Hager_74, Haunter_73, Hiddenleaf_73, JDawG_71, JingleBells_72, Karate_71, Kate_72,

Krampus_72, LordBart_76, MortySmith_70, NarutoRun_72, Neptune_72, OhDear_72, OverHedge_71, Pharpay_71, PhunaPhoke_72, Potty_71, Poultruss_71, Rachella_72, Rie18_72, SilentWarrior_73, Snakehole_73, Tedro_72, Tiggy93_71, TinyMiny_76, Tongui_73,

Genes that have the "Most Annotated" start but do not call it:

- Kors_76, RikSengupta_76, Sparcetus_76,

Genes that do not have the "Most Annotated" start:

-

Summary by start number:

Start 3:

- Found in 7 of 46 (15.2%) of genes in pham
- Manual Annotations of this start: 3 of 42
- Called 42.9% of time when present
- Phage (with cluster) where this start called: Kors_76 (EF), RikSengupta_76 (EF), Sparcetus_76 (EF),

Start 4:

- Found in 46 of 46 (100.0%) of genes in pham
- Manual Annotations of this start: 39 of 42
- Called 93.5% of time when present
- Phage (with cluster) where this start called: Aesir_71 (EF), Ajin_76 (EF), Anakin_72 (EF), AnnaSerena_72 (EF), Annapurna_73 (EF), Artiphact_72 (EF), Bramble_76 (EF), Chivey_73 (EF), CoolCookie_71 (EF), Crestdrop_73 (EF), Cybele_72 (EF), DannyDe_73 (EF), Dauntless_71 (EF), Erudite_71 (EF), FountainFog_72 (EF), FreddieHg_73 (EF), Gilda_72 (EF), Hager_74 (EF), Haunter_73 (EF), Hiddenleaf_73 (EF), JDawG_71 (EF), JingleBells_72 (EF), Karate_71 (EF), Kate_72 (EF), Krampus_72 (EF), LordBart_76 (EF), MortySmith_70 (EF), NarutoRun_72 (EF), Neptune_72 (EF), OhDear_72 (EF), OverHedge_71 (EF), Pharpay_71 (EF), PhunaPhoke_72 (EF), Potty_71 (EF), Poultruss_71 (EF), Rachella_72 (EF), Rie18_72 (EF), SilentWarrior_73 (EF), Snakehole_73 (EF), Tedro_72 (EF), Tiggy93_71 (EF), TinyMiny_76 (EF), Tongui_73 (EF),

Summary by clusters:

There is one cluster represented in this pham: EF

Info for manual annotations of cluster EF:

- Start number 3 was manually annotated 3 times for cluster EF.
- Start number 4 was manually annotated 39 times for cluster EF.

Gene Information:

Gene: Aesir_71 Start: 51258, Stop: 51638, Start Num: 4

Candidate Starts for Aesir_71:

(Start: 4 @51258 has 39 MA's), (5, 51300), (6, 51309), (10, 51360), (12, 51381), (13, 51405), (15, 51435), (17, 51480), (18, 51486), (21, 51510), (24, 51615),

Gene: Ajin_76 Start: 51742, Stop: 52086, Start Num: 4

Candidate Starts for Ajin_76:

(Start: 3 @51727 has 3 MA's), (Start: 4 @51742 has 39 MA's), (7, 51802), (8, 51811), (9, 51826), (12, 51850), (13, 51871), (14, 51883), (20, 51949), (22, 51994), (23, 52012),

Gene: Anakin_72 Start: 51572, Stop: 51952, Start Num: 4

Candidate Starts for Anakin_72:

(Start: 4 @51572 has 39 MA's), (5, 51614), (10, 51674), (12, 51695), (13, 51719), (15, 51749), (17, 51794), (18, 51800), (24, 51929),

Gene: AnnaSerena_72 Start: 51606, Stop: 51986, Start Num: 4

Candidate Starts for AnnaSerena_72:

(Start: 4 @51606 has 39 MA's), (5, 51648), (10, 51708), (12, 51729), (13, 51753), (15, 51783), (17, 51828), (18, 51834), (24, 51963),

Gene: Annapurna_73 Start: 51161, Stop: 51541, Start Num: 4

Candidate Starts for Annapurna_73:

(Start: 4 @51161 has 39 MA's), (5, 51203), (10, 51263), (12, 51284), (13, 51308), (15, 51338), (17, 51383), (18, 51389), (24, 51518),

Gene: Artiphact_72 Start: 51596, Stop: 51976, Start Num: 4

Candidate Starts for Artiphact_72:

(Start: 4 @51596 has 39 MA's), (5, 51638), (6, 51647), (10, 51698), (12, 51719), (13, 51743), (15, 51773), (17, 51818), (18, 51824), (24, 51953),

Gene: Bramble_76 Start: 51697, Stop: 52053, Start Num: 4

Candidate Starts for Bramble_76:

(Start: 3 @51682 has 3 MA's), (Start: 4 @51697 has 39 MA's), (7, 51757), (8, 51766), (9, 51781), (13, 51826), (20, 51916), (22, 51961), (23, 51979),

Gene: Chivey_73 Start: 51060, Stop: 51440, Start Num: 4

Candidate Starts for Chivey_73:

(Start: 4 @51060 has 39 MA's), (5, 51102), (10, 51162), (12, 51183), (13, 51207), (15, 51237), (17, 51282), (18, 51288), (24, 51417),

Gene: CoolCookie_71 Start: 51657, Stop: 52040, Start Num: 4

Candidate Starts for CoolCookie_71:

(Start: 4 @51657 has 39 MA's), (10, 51759), (13, 51804), (15, 51834), (17, 51879), (18, 51885), (24, 52014),

Gene: Crestdrop_73 Start: 51484, Stop: 51864, Start Num: 4

Candidate Starts for Crestdrop_73:

(Start: 4 @51484 has 39 MA's), (10, 51586), (12, 51607), (13, 51631), (15, 51661), (17, 51706), (18, 51712), (24, 51841),

Gene: Cybele_72 Start: 51602, Stop: 51982, Start Num: 4

Candidate Starts for Cybele_72:

(Start: 4 @51602 has 39 MA's), (5, 51644), (10, 51704), (12, 51725), (13, 51749), (15, 51779), (17, 51824), (18, 51830), (24, 51959),

Gene: DannyDe_73 Start: 51062, Stop: 51442, Start Num: 4

Candidate Starts for DannyDe_73:

(Start: 4 @51062 has 39 MA's), (5, 51104), (6, 51113), (10, 51164), (12, 51185), (13, 51209), (15, 51239), (17, 51284), (18, 51290), (21, 51314), (24, 51419),

Gene: Dauntless_71 Start: 51193, Stop: 51573, Start Num: 4

Candidate Starts for Dauntless_71:

(Start: 4 @51193 has 39 MA's), (5, 51235), (10, 51295), (12, 51316), (13, 51340), (15, 51370), (17, 51415), (18, 51421), (21, 51445), (24, 51550),

Gene: Erudite_71 Start: 51193, Stop: 51573, Start Num: 4

Candidate Starts for Erudite_71:

(Start: 4 @51193 has 39 MA's), (5, 51235), (10, 51295), (12, 51316), (13, 51340), (15, 51370), (17, 51415), (18, 51421), (21, 51445), (24, 51550),

Gene: FountainFog_72 Start: 51033, Stop: 51416, Start Num: 4

Candidate Starts for FountainFog_72:

(Start: 4 @51033 has 39 MA's), (7, 51105), (10, 51135), (11, 51153), (13, 51180), (15, 51210), (19, 51267), (24, 51390),

Gene: FreddieHg_73 Start: 51077, Stop: 51457, Start Num: 4

Candidate Starts for FreddieHg_73:

(Start: 4 @51077 has 39 MA's), (5, 51119), (10, 51179), (12, 51200), (13, 51224), (15, 51254), (17, 51299), (18, 51305), (24, 51434),

Gene: Gilda_72 Start: 51594, Stop: 51974, Start Num: 4

Candidate Starts for Gilda_72:

(Start: 4 @51594 has 39 MA's), (5, 51636), (10, 51696), (12, 51717), (13, 51741), (15, 51771), (17, 51816), (18, 51822), (24, 51951),

Gene: Hager_74 Start: 51057, Stop: 51440, Start Num: 4

Candidate Starts for Hager_74:

(Start: 4 @51057 has 39 MA's), (7, 51129), (10, 51159), (13, 51204), (15, 51234), (24, 51414),

Gene: Haunter_73 Start: 50967, Stop: 51350, Start Num: 4

Candidate Starts for Haunter_73:

(Start: 4 @50967 has 39 MA's), (5, 51009), (6, 51018), (10, 51069), (12, 51090), (13, 51114), (15, 51144), (17, 51189), (18, 51195), (24, 51324),

Gene: Hiddenleaf_73 Start: 51060, Stop: 51440, Start Num: 4

Candidate Starts for Hiddenleaf_73:

(Start: 4 @51060 has 39 MA's), (5, 51102), (10, 51162), (12, 51183), (13, 51207), (15, 51237), (17, 51282), (18, 51288), (24, 51417),

Gene: JDawG_71 Start: 51253, Stop: 51633, Start Num: 4

Candidate Starts for JDawG_71:

(Start: 4 @51253 has 39 MA's), (5, 51295), (10, 51355), (12, 51376), (13, 51400), (15, 51430), (17, 51475), (18, 51481), (24, 51610),

Gene: JingleBells_72 Start: 51165, Stop: 51545, Start Num: 4

Candidate Starts for JingleBells_72:

(Start: 4 @51165 has 39 MA's), (5, 51207), (6, 51216), (10, 51267), (12, 51288), (13, 51312), (15, 51342), (17, 51387), (18, 51393), (21, 51417), (24, 51522),

Gene: Karate_71 Start: 51306, Stop: 51686, Start Num: 4

Candidate Starts for Karate_71:

(2, 51009), (Start: 4 @51306 has 39 MA's), (5, 51348), (6, 51357), (10, 51408), (12, 51429), (13, 51453), (15, 51483), (17, 51528), (18, 51534), (24, 51663),

Gene: Kate_72 Start: 51511, Stop: 51891, Start Num: 4

Candidate Starts for Kate_72:

(Start: 4 @51511 has 39 MA's), (5, 51553), (10, 51613), (12, 51634), (13, 51658), (15, 51688), (17, 51733), (18, 51739), (24, 51868),

Gene: Kors_76 Start: 51787, Stop: 52158, Start Num: 3

Candidate Starts for Kors_76:

(Start: 3 @51787 has 3 MA's), (Start: 4 @51802 has 39 MA's), (7, 51862), (8, 51871), (9, 51886), (13, 51931), (14, 51943), (20, 52021), (22, 52066), (23, 52084),

Gene: Krampus_72 Start: 51607, Stop: 51987, Start Num: 4

Candidate Starts for Krampus_72:

(Start: 4 @51607 has 39 MA's), (5, 51649), (10, 51709), (12, 51730), (13, 51754), (15, 51784), (17, 51829), (18, 51835), (24, 51964),

Gene: LordBart_76 Start: 51724, Stop: 52068, Start Num: 4

Candidate Starts for LordBart_76:

(Start: 3 @51709 has 3 MA's), (Start: 4 @51724 has 39 MA's), (7, 51784), (8, 51793), (9, 51808), (12, 51832), (13, 51853), (14, 51865), (20, 51931), (22, 51976), (23, 51994),

Gene: MortySmith_70 Start: 50667, Stop: 51047, Start Num: 4

Candidate Starts for MortySmith_70:

(Start: 4 @50667 has 39 MA's), (5, 50709), (6, 50718), (10, 50769), (12, 50790), (13, 50814), (15, 50844), (17, 50889), (18, 50895), (21, 50919), (24, 51024),

Gene: NarutoRun_72 Start: 51572, Stop: 51952, Start Num: 4

Candidate Starts for NarutoRun_72:

(Start: 4 @51572 has 39 MA's), (5, 51614), (10, 51674), (12, 51695), (13, 51719), (15, 51749), (17, 51794), (18, 51800), (24, 51929),

Gene: Neptune_72 Start: 51602, Stop: 51982, Start Num: 4

Candidate Starts for Neptune_72:

(Start: 4 @51602 has 39 MA's), (5, 51644), (10, 51704), (12, 51725), (13, 51749), (15, 51779), (17, 51824), (18, 51830), (24, 51959),

Gene: OhDear_72 Start: 51570, Stop: 51950, Start Num: 4

Candidate Starts for OhDear_72:

(Start: 4 @51570 has 39 MA's), (5, 51612), (10, 51672), (12, 51693), (13, 51717), (15, 51747), (17, 51792), (18, 51798), (24, 51927),

Gene: OverHedge_71 Start: 51468, Stop: 51848, Start Num: 4

Candidate Starts for OverHedge_71:

(Start: 4 @51468 has 39 MA's), (5, 51510), (10, 51570), (12, 51591), (13, 51615), (15, 51645), (17, 51690), (18, 51696), (24, 51825),

Gene: Pharpay_71 Start: 51617, Stop: 51997, Start Num: 4

Candidate Starts for Pharpay_71:

(Start: 4 @51617 has 39 MA's), (5, 51659), (6, 51668), (10, 51719), (12, 51740), (13, 51764), (15, 51794), (17, 51839), (18, 51845), (24, 51974),

Gene: PhunaPhoke_72 Start: 51587, Stop: 51967, Start Num: 4

Candidate Starts for PhunaPhoke_72:

(Start: 4 @51587 has 39 MA's), (5, 51629), (10, 51689), (12, 51710), (13, 51734), (15, 51764), (17, 51809), (18, 51815), (24, 51944),

Gene: Potty_71 Start: 51517, Stop: 51897, Start Num: 4

Candidate Starts for Potty_71:

(Start: 4 @51517 has 39 MA's), (5, 51559), (10, 51619), (12, 51640), (13, 51664), (15, 51694), (17, 51739), (18, 51745), (24, 51874),

Gene: Poultress_71 Start: 51862, Stop: 52242, Start Num: 4

Candidate Starts for Poultress_71:

(Start: 4 @51862 has 39 MA's), (5, 51904), (10, 51964), (12, 51985), (13, 52009), (15, 52039), (17, 52084), (18, 52090), (24, 52219),

Gene: Rachella_72 Start: 51598, Stop: 51978, Start Num: 4

Candidate Starts for Rachella_72:

(Start: 4 @51598 has 39 MA's), (5, 51640), (10, 51700), (12, 51721), (13, 51745), (15, 51775), (17, 51820), (18, 51826), (24, 51955),

Gene: Rie18_72 Start: 51385, Stop: 51768, Start Num: 4

Candidate Starts for Rie18_72:

(Start: 4 @51385 has 39 MA's), (7, 51457), (10, 51487), (13, 51532), (15, 51562), (24, 51742),

Gene: RikSengupta_76 Start: 51818, Stop: 52189, Start Num: 3

Candidate Starts for RikSengupta_76:

(Start: 3 @51818 has 3 MA's), (Start: 4 @51833 has 39 MA's), (7, 51893), (8, 51902), (9, 51917), (13, 51962), (14, 51974), (20, 52052), (22, 52097), (23, 52115),

Gene: SilentWarrior_73 Start: 51026, Stop: 51406, Start Num: 4

Candidate Starts for SilentWarrior_73:

(Start: 4 @51026 has 39 MA's), (5, 51068), (6, 51077), (10, 51128), (12, 51149), (13, 51173), (15, 51203), (17, 51248), (18, 51254), (21, 51278), (24, 51383),

Gene: Snakehole_73 Start: 51009, Stop: 51389, Start Num: 4

Candidate Starts for Snakehole_73:

(Start: 4 @51009 has 39 MA's), (5, 51051), (6, 51060), (10, 51111), (12, 51132), (13, 51156), (15, 51186), (17, 51231), (18, 51237), (21, 51261), (24, 51366),

Gene: Sparcetus_76 Start: 51632, Stop: 52003, Start Num: 3

Candidate Starts for Sparcetus_76:

(Start: 3 @51632 has 3 MA's), (Start: 4 @51647 has 39 MA's), (7, 51707), (8, 51716), (9, 51731), (13, 51776), (14, 51788), (16, 51806), (20, 51866), (22, 51911), (23, 51929),

Gene: Tedro_72 Start: 51054, Stop: 51437, Start Num: 4

Candidate Starts for Tedro_72:

(Start: 4 @51054 has 39 MA's), (7, 51126), (10, 51156), (13, 51201), (15, 51231), (17, 51276), (18, 51282), (24, 51411),

Gene: Tiggy93_71 Start: 51616, Stop: 51996, Start Num: 4

Candidate Starts for Tiggy93_71:

(Start: 4 @51616 has 39 MA's), (5, 51658), (6, 51667), (10, 51718), (12, 51739), (13, 51763), (15, 51793), (17, 51838), (18, 51844), (24, 51973),

Gene: TinyMiny_76 Start: 51749, Stop: 52093, Start Num: 4

Candidate Starts for TinyMiny_76:

(1, 51341), (Start: 3 @51734 has 3 MA's), (Start: 4 @51749 has 39 MA's), (7, 51809), (8, 51818), (9, 51833), (12, 51857), (13, 51878), (14, 51890), (20, 51956), (22, 52001), (23, 52019),

Gene: Tongui_73 Start: 51497, Stop: 51880, Start Num: 4

Candidate Starts for Tongui_73:

(Start: 4 @51497 has 39 MA's), (7, 51569), (10, 51599), (11, 51617), (13, 51644), (15, 51674), (19, 51731), (24, 51854),