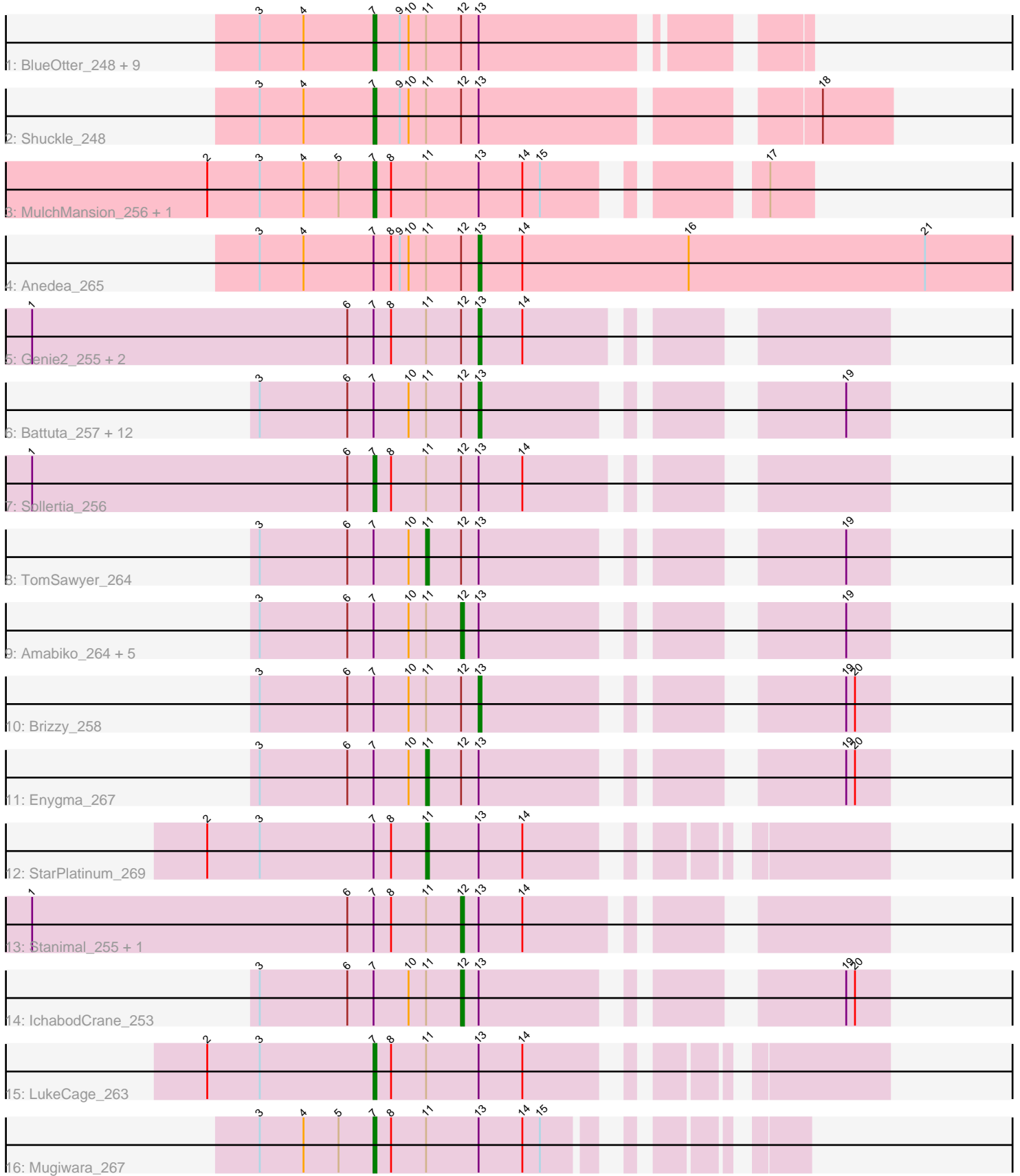


Pham 308802



Note: Tracks are now grouped by subcluster and scaled. Switching in subcluster is indicated by changes in track color. Track scale is now set by default to display the region 30 bp upstream of start 1 to 30 bp downstream of the last possible start. If this default region is judged to be packed too tightly with annotated starts, the track will be further scaled to only show that region of the ORF with annotated starts. This action will be indicated by adding "Zoomed" to the title. For starts, yellow indicates the location of called starts comprised solely of Glimmer/GeneMark auto-annotations, green indicates the location of called starts with at least 1 manual gene annotation.

Pham 308802 Report

This analysis was run 06/27/26 on database version 652.

Pham number 308802 has 46 members, 3 are drafts.

Phages represented in each track:

- Track 1 : BlueOtter_248, PacManQ_247, Tribute_245, Pepperwood_249, Samisti12_251, Scheme_253, Cross_248, HangryHippo_248, Lululemon_247, Larnav_250
- Track 2 : Shuckle_248
- Track 3 : MulchMansion_256, Angela_257
- Track 4 : Anedea_265
- Track 5 : Genie2_255, Yaboi_261, AngryGiraffe_256
- Track 6 : Battuta_257, SaltySpittoon_259, Birchlyn_259, Jollison_256, PumpkinSpice_262, Bordeaux_257, KentuckyRacer_266, Daisy123_269, Spelly_264, Quaran19_260, Spilled_267, Wipeout_251, AcciDwight_268
- Track 7 : Sollertia_256
- Track 8 : TomSawyer_264
- Track 9 : Amabiko_264, CeilingFan_265, JimJam_267, MindFlayer_252, Gibbi_269, Starbow_256
- Track 10 : Brizzy_258
- Track 11 : Enygma_267
- Track 12 : StarPlatinum_269
- Track 13 : Stanimal_255, BoomerJR_255
- Track 14 : IchabodCrane_253
- Track 15 : LukeCage_263
- Track 16 : Mugiwara_267

Summary of Final Annotations (See graph section above for start numbers):

The start number called the most often in the published annotations is 13, it was called in 16 of the 43 non-draft genes in the pham.

Genes that call this "Most Annotated" start:

- AcciDwight_268, Anedea_265, AngryGiraffe_256, Battuta_257, Birchlyn_259, Bordeaux_257, Brizzy_258, Daisy123_269, Genie2_255, Jollison_256, KentuckyRacer_266, PumpkinSpice_262, Quaran19_260, SaltySpittoon_259, Spelly_264, Spilled_267, Wipeout_251, Yaboi_261,

Genes that have the "Most Annotated" start but do not call it:

- Amabiko_264, Angela_257, BlueOtter_248, BoomerJR_255, CeilingFan_265, Cross_248, Enygma_267, Gibbi_269, HangryHippo_248, IchabodCrane_253, JimJam_267, Larnav_250, LukeCage_263, Lululemon_247, MindFlayer_252, Mugiwara_267, MulchMansion_256, PacManQ_247, Pepperwood_249, Samisti12_251, Scheme_253, Shuckle_248, Sollertia_256, Stanimal_255, StarPlatinum_269, Starbow_256, TomSawyer_264, Tribute_245,

Genes that do not have the "Most Annotated" start:

-

Summary by start number:

Start 7:

- Found in 46 of 46 (100.0%) of genes in pham
- Manual Annotations of this start: 16 of 43
- Called 34.8% of time when present
- Phage (with cluster) where this start called: Angela_257 (BE1), BlueOtter_248 (BE1), Cross_248 (BE1), HangryHippo_248 (BE1), Larnav_250 (BE1), LukeCage_263 (BE2), Lululemon_247 (BE1), Mugiwara_267 (BE2), MulchMansion_256 (BE1), PacManQ_247 (BE1), Pepperwood_249 (BE1), Samisti12_251 (BE1), Scheme_253 (BE1), Shuckle_248 (BE1), Sollertia_256 (BE2), Tribute_245 (BE1),

Start 11:

- Found in 46 of 46 (100.0%) of genes in pham
- Manual Annotations of this start: 3 of 43
- Called 6.5% of time when present
- Phage (with cluster) where this start called: Enygma_267 (BE2), StarPlatinum_269 (BE2), TomSawyer_264 (BE2),

Start 12:

- Found in 41 of 46 (89.1%) of genes in pham
- Manual Annotations of this start: 8 of 43
- Called 22.0% of time when present
- Phage (with cluster) where this start called: Amabiko_264 (BE2), BoomerJR_255 (BE2), CeilingFan_265 (BE2), Gibbi_269 (BE2), IchabodCrane_253 (BE2), JimJam_267 (BE2), MindFlayer_252 (BE2), Stanimal_255 (BE2), Starbow_256 (BE2),

Start 13:

- Found in 46 of 46 (100.0%) of genes in pham
- Manual Annotations of this start: 16 of 43
- Called 39.1% of time when present
- Phage (with cluster) where this start called: AcciDwight_268 (BE2), Anedea_265 (BE1), AngryGiraffe_256 (BE2), Battuta_257 (BE2), Birchlyn_259 (BE2), Bordeaux_257 (BE2), Brizzy_258 (BE2), Daisy123_269 (BE2), Genie2_255 (BE2), Jollison_256 (BE2), KentuckyRacer_266 (BE2), PumpkinSpice_262 (BE2), Quaran19_260 (BE2), SaltySpitoon_259 (BE2), Spelly_264 (BE2), Spilled_267 (BE2), Wipeout_251 (BE2), Yaboi_261 (BE2),

Summary by clusters:

There are 2 clusters represented in this pham: BE2, BE1,

Info for manual annotations of cluster BE1:

- Start number 7 was manually annotated 13 times for cluster BE1.
- Start number 13 was manually annotated 1 time for cluster BE1.

Info for manual annotations of cluster BE2:

- Start number 7 was manually annotated 3 times for cluster BE2.
- Start number 11 was manually annotated 3 times for cluster BE2.
- Start number 12 was manually annotated 8 times for cluster BE2.
- Start number 13 was manually annotated 15 times for cluster BE2.

Gene Information:

Gene: AcciDwight_268 Start: 118974, Stop: 119087, Start Num: 13

Candidate Starts for AcciDwight_268:

(3, 118899), (6, 118929), (Start: 7 @118938 has 16 MA's), (10, 118950), (Start: 11 @118956 has 3 MA's), (Start: 12 @118968 has 8 MA's), (Start: 13 @118974 has 16 MA's), (19, 119073),

Gene: Amabiko_264 Start: 118326, Stop: 118445, Start Num: 12

Candidate Starts for Amabiko_264:

(3, 118257), (6, 118287), (Start: 7 @118296 has 16 MA's), (10, 118308), (Start: 11 @118314 has 3 MA's), (Start: 12 @118326 has 8 MA's), (Start: 13 @118332 has 16 MA's), (19, 118431),

Gene: Anedea_265 Start: 122550, Stop: 122744, Start Num: 13

Candidate Starts for Anedea_265:

(3, 122475), (4, 122490), (Start: 7 @122514 has 16 MA's), (8, 122520), (9, 122523), (10, 122526), (Start: 11 @122532 has 3 MA's), (Start: 12 @122544 has 8 MA's), (Start: 13 @122550 has 16 MA's), (14, 122565), (16, 122622), (21, 122703),

Gene: Angela_257 Start: 121854, Stop: 121982, Start Num: 7

Candidate Starts for Angela_257:

(2, 121797), (3, 121815), (4, 121830), (5, 121842), (Start: 7 @121854 has 16 MA's), (8, 121860), (Start: 11 @121872 has 3 MA's), (Start: 13 @121890 has 16 MA's), (14, 121905), (15, 121911), (17, 121968),

Gene: AngryGiraffe_256 Start: 117819, Stop: 117935, Start Num: 13

Candidate Starts for AngryGiraffe_256:

(1, 117666), (6, 117774), (Start: 7 @117783 has 16 MA's), (8, 117789), (Start: 11 @117801 has 3 MA's), (Start: 12 @117813 has 8 MA's), (Start: 13 @117819 has 16 MA's), (14, 117834),

Gene: Battuta_257 Start: 117647, Stop: 117760, Start Num: 13

Candidate Starts for Battuta_257:

(3, 117572), (6, 117602), (Start: 7 @117611 has 16 MA's), (10, 117623), (Start: 11 @117629 has 3 MA's), (Start: 12 @117641 has 8 MA's), (Start: 13 @117647 has 16 MA's), (19, 117746),

Gene: Birchlyn_259 Start: 115580, Stop: 115693, Start Num: 13

Candidate Starts for Birchlyn_259:

(3, 115505), (6, 115535), (Start: 7 @115544 has 16 MA's), (10, 115556), (Start: 11 @115562 has 3 MA's), (Start: 12 @115574 has 8 MA's), (Start: 13 @115580 has 16 MA's), (19, 115679),

Gene: BlueOtter_248 Start: 120523, Stop: 120654, Start Num: 7

Candidate Starts for BlueOtter_248:

(3, 120484), (4, 120499), (Start: 7 @120523 has 16 MA's), (9, 120532), (10, 120535), (Start: 11 @120541 has 3 MA's), (Start: 12 @120553 has 8 MA's), (Start: 13 @120559 has 16 MA's),

Gene: BoomerJR_255 Start: 118246, Stop: 118368, Start Num: 12

Candidate Starts for BoomerJR_255:

(1, 118099), (6, 118207), (Start: 7 @118216 has 16 MA's), (8, 118222), (Start: 11 @118234 has 3 MA's), (Start: 12 @118246 has 8 MA's), (Start: 13 @118252 has 16 MA's), (14, 118267),

Gene: Bordeaux_257 Start: 118230, Stop: 118343, Start Num: 13

Candidate Starts for Bordeaux_257:

(3, 118155), (6, 118185), (Start: 7 @118194 has 16 MA's), (10, 118206), (Start: 11 @118212 has 3 MA's), (Start: 12 @118224 has 8 MA's), (Start: 13 @118230 has 16 MA's), (19, 118329),

Gene: Brizzy_258 Start: 118758, Stop: 118871, Start Num: 13

Candidate Starts for Brizzy_258:

(3, 118683), (6, 118713), (Start: 7 @118722 has 16 MA's), (10, 118734), (Start: 11 @118740 has 3 MA's), (Start: 12 @118752 has 8 MA's), (Start: 13 @118758 has 16 MA's), (19, 118857), (20, 118860),

Gene: CeilingFan_265 Start: 119479, Stop: 119598, Start Num: 12

Candidate Starts for CeilingFan_265:

(3, 119410), (6, 119440), (Start: 7 @119449 has 16 MA's), (10, 119461), (Start: 11 @119467 has 3 MA's), (Start: 12 @119479 has 8 MA's), (Start: 13 @119485 has 16 MA's), (19, 119584),

Gene: Cross_248 Start: 121168, Stop: 121299, Start Num: 7

Candidate Starts for Cross_248:

(3, 121129), (4, 121144), (Start: 7 @121168 has 16 MA's), (9, 121177), (10, 121180), (Start: 11 @121186 has 3 MA's), (Start: 12 @121198 has 8 MA's), (Start: 13 @121204 has 16 MA's),

Gene: Daisy123_269 Start: 119347, Stop: 119460, Start Num: 13

Candidate Starts for Daisy123_269:

(3, 119272), (6, 119302), (Start: 7 @119311 has 16 MA's), (10, 119323), (Start: 11 @119329 has 3 MA's), (Start: 12 @119341 has 8 MA's), (Start: 13 @119347 has 16 MA's), (19, 119446),

Gene: Enygma_267 Start: 121264, Stop: 121395, Start Num: 11

Candidate Starts for Enygma_267:

(3, 121207), (6, 121237), (Start: 7 @121246 has 16 MA's), (10, 121258), (Start: 11 @121264 has 3 MA's), (Start: 12 @121276 has 8 MA's), (Start: 13 @121282 has 16 MA's), (19, 121381), (20, 121384),

Gene: Genie2_255 Start: 118377, Stop: 118493, Start Num: 13

Candidate Starts for Genie2_255:

(1, 118224), (6, 118332), (Start: 7 @118341 has 16 MA's), (8, 118347), (Start: 11 @118359 has 3 MA's), (Start: 12 @118371 has 8 MA's), (Start: 13 @118377 has 16 MA's), (14, 118392),

Gene: Gibbi_269 Start: 118972, Stop: 119091, Start Num: 12

Candidate Starts for Gibbi_269:

(3, 118903), (6, 118933), (Start: 7 @118942 has 16 MA's), (10, 118954), (Start: 11 @118960 has 3 MA's), (Start: 12 @118972 has 8 MA's), (Start: 13 @118978 has 16 MA's), (19, 119077),

Gene: HangryHippo_248 Start: 120523, Stop: 120654, Start Num: 7

Candidate Starts for HangryHippo_248:

(3, 120484), (4, 120499), (Start: 7 @120523 has 16 MA's), (9, 120532), (10, 120535), (Start: 11 @120541 has 3 MA's), (Start: 12 @120553 has 8 MA's), (Start: 13 @120559 has 16 MA's),

Gene: IchabodCrane_253 Start: 118027, Stop: 118146, Start Num: 12

Candidate Starts for IchabodCrane_253:

(3, 117958), (6, 117988), (Start: 7 @117997 has 16 MA's), (10, 118009), (Start: 11 @118015 has 3 MA's), (Start: 12 @118027 has 8 MA's), (Start: 13 @118033 has 16 MA's), (19, 118132), (20, 118135),

Gene: JimJam_267 Start: 120408, Stop: 120527, Start Num: 12

Candidate Starts for JimJam_267:

(3, 120339), (6, 120369), (Start: 7 @120378 has 16 MA's), (10, 120390), (Start: 11 @120396 has 3 MA's), (Start: 12 @120408 has 8 MA's), (Start: 13 @120414 has 16 MA's), (19, 120513),

Gene: Jollison_256 Start: 118164, Stop: 118277, Start Num: 13

Candidate Starts for Jollison_256:

(3, 118089), (6, 118119), (Start: 7 @118128 has 16 MA's), (10, 118140), (Start: 11 @118146 has 3 MA's), (Start: 12 @118158 has 8 MA's), (Start: 13 @118164 has 16 MA's), (19, 118263),

Gene: KentuckyRacer_266 Start: 120329, Stop: 120442, Start Num: 13

Candidate Starts for KentuckyRacer_266:

(3, 120254), (6, 120284), (Start: 7 @120293 has 16 MA's), (10, 120305), (Start: 11 @120311 has 3 MA's), (Start: 12 @120323 has 8 MA's), (Start: 13 @120329 has 16 MA's), (19, 120428),

Gene: Larnav_250 Start: 121441, Stop: 121572, Start Num: 7

Candidate Starts for Larnav_250:

(3, 121402), (4, 121417), (Start: 7 @121441 has 16 MA's), (9, 121450), (10, 121453), (Start: 11 @121459 has 3 MA's), (Start: 12 @121471 has 8 MA's), (Start: 13 @121477 has 16 MA's),

Gene: LukeCage_263 Start: 120379, Stop: 120528, Start Num: 7

Candidate Starts for LukeCage_263:

(2, 120322), (3, 120340), (Start: 7 @120379 has 16 MA's), (8, 120385), (Start: 11 @120397 has 3 MA's), (Start: 13 @120415 has 16 MA's), (14, 120430),

Gene: Lululemon_247 Start: 120328, Stop: 120459, Start Num: 7

Candidate Starts for Lululemon_247:

(3, 120289), (4, 120304), (Start: 7 @120328 has 16 MA's), (9, 120337), (10, 120340), (Start: 11 @120346 has 3 MA's), (Start: 12 @120358 has 8 MA's), (Start: 13 @120364 has 16 MA's),

Gene: MindFlayer_252 Start: 117543, Stop: 117662, Start Num: 12

Candidate Starts for MindFlayer_252:

(3, 117474), (6, 117504), (Start: 7 @117513 has 16 MA's), (10, 117525), (Start: 11 @117531 has 3 MA's), (Start: 12 @117543 has 8 MA's), (Start: 13 @117549 has 16 MA's), (19, 117648),

Gene: Mugiwara_267 Start: 120861, Stop: 120980, Start Num: 7

Candidate Starts for Mugiwara_267:

(3, 120822), (4, 120837), (5, 120849), (Start: 7 @120861 has 16 MA's), (8, 120867), (Start: 11 @120879 has 3 MA's), (Start: 13 @120897 has 16 MA's), (14, 120912), (15, 120918),

Gene: MulchMansion_256 Start: 122428, Stop: 122556, Start Num: 7

Candidate Starts for MulchMansion_256:

(2, 122371), (3, 122389), (4, 122404), (5, 122416), (Start: 7 @122428 has 16 MA's), (8, 122434), (Start: 11 @122446 has 3 MA's), (Start: 13 @122464 has 16 MA's), (14, 122479), (15, 122485), (17, 122542),

Gene: PacManQ_247 Start: 120328, Stop: 120459, Start Num: 7

Candidate Starts for PacManQ_247:

(3, 120289), (4, 120304), (Start: 7 @120328 has 16 MA's), (9, 120337), (10, 120340), (Start: 11 @120346 has 3 MA's), (Start: 12 @120358 has 8 MA's), (Start: 13 @120364 has 16 MA's),

Gene: Pepperwood_249 Start: 121220, Stop: 121351, Start Num: 7

Candidate Starts for Pepperwood_249:

(3, 121181), (4, 121196), (Start: 7 @121220 has 16 MA's), (9, 121229), (10, 121232), (Start: 11 @121238 has 3 MA's), (Start: 12 @121250 has 8 MA's), (Start: 13 @121256 has 16 MA's),

Gene: PumpkinSpice_262 Start: 118770, Stop: 118883, Start Num: 13

Candidate Starts for PumpkinSpice_262:

(3, 118695), (6, 118725), (Start: 7 @118734 has 16 MA's), (10, 118746), (Start: 11 @118752 has 3 MA's), (Start: 12 @118764 has 8 MA's), (Start: 13 @118770 has 16 MA's), (19, 118869),

Gene: Quaran19_260 Start: 118671, Stop: 118784, Start Num: 13

Candidate Starts for Quaran19_260:

(3, 118596), (6, 118626), (Start: 7 @118635 has 16 MA's), (10, 118647), (Start: 11 @118653 has 3 MA's), (Start: 12 @118665 has 8 MA's), (Start: 13 @118671 has 16 MA's), (19, 118770),

Gene: SaltySpittoon_259 Start: 117753, Stop: 117866, Start Num: 13

Candidate Starts for SaltySpittoon_259:

(3, 117678), (6, 117708), (Start: 7 @117717 has 16 MA's), (10, 117729), (Start: 11 @117735 has 3 MA's), (Start: 12 @117747 has 8 MA's), (Start: 13 @117753 has 16 MA's), (19, 117852),

Gene: Samisti12_251 Start: 122477, Stop: 122611, Start Num: 7

Candidate Starts for Samisti12_251:

(3, 122438), (4, 122453), (Start: 7 @122477 has 16 MA's), (9, 122486), (10, 122489), (Start: 11 @122495 has 3 MA's), (Start: 12 @122507 has 8 MA's), (Start: 13 @122513 has 16 MA's),

Gene: Scheme_253 Start: 122629, Stop: 122763, Start Num: 7

Candidate Starts for Scheme_253:

(3, 122590), (4, 122605), (Start: 7 @122629 has 16 MA's), (9, 122638), (10, 122641), (Start: 11 @122647 has 3 MA's), (Start: 12 @122659 has 8 MA's), (Start: 13 @122665 has 16 MA's),

Gene: Shuckle_248 Start: 122102, Stop: 122263, Start Num: 7

Candidate Starts for Shuckle_248:

(3, 122063), (4, 122078), (Start: 7 @122102 has 16 MA's), (9, 122111), (10, 122114), (Start: 11 @122120 has 3 MA's), (Start: 12 @122132 has 8 MA's), (Start: 13 @122138 has 16 MA's), (18, 122240),

Gene: Sollertia_256 Start: 118330, Stop: 118482, Start Num: 7

Candidate Starts for Sollertia_256:

(1, 118213), (6, 118321), (Start: 7 @118330 has 16 MA's), (8, 118336), (Start: 11 @118348 has 3 MA's), (Start: 12 @118360 has 8 MA's), (Start: 13 @118366 has 16 MA's), (14, 118381),

Gene: Spelly_264 Start: 117682, Stop: 117795, Start Num: 13

Candidate Starts for Spelly_264:

(3, 117607), (6, 117637), (Start: 7 @117646 has 16 MA's), (10, 117658), (Start: 11 @117664 has 3 MA's), (Start: 12 @117676 has 8 MA's), (Start: 13 @117682 has 16 MA's), (19, 117781),

Gene: Spilled_267 Start: 119346, Stop: 119459, Start Num: 13

Candidate Starts for Spilled_267:

(3, 119271), (6, 119301), (Start: 7 @119310 has 16 MA's), (10, 119322), (Start: 11 @119328 has 3 MA's), (Start: 12 @119340 has 8 MA's), (Start: 13 @119346 has 16 MA's), (19, 119445),

Gene: Stanimal_255 Start: 118732, Stop: 118854, Start Num: 12

Candidate Starts for Stanimal_255:

(1, 118585), (6, 118693), (Start: 7 @118702 has 16 MA's), (8, 118708), (Start: 11 @118720 has 3 MA's), (Start: 12 @118732 has 8 MA's), (Start: 13 @118738 has 16 MA's), (14, 118753),

Gene: StarPlatinum_269 Start: 121173, Stop: 121304, Start Num: 11

Candidate Starts for StarPlatinum_269:

(2, 121098), (3, 121116), (Start: 7 @121155 has 16 MA's), (8, 121161), (Start: 11 @121173 has 3 MA's), (Start: 13 @121191 has 16 MA's), (14, 121206),

Gene: Starbow_256 Start: 117720, Stop: 117839, Start Num: 12

Candidate Starts for Starbow_256:

(3, 117651), (6, 117681), (Start: 7 @117690 has 16 MA's), (10, 117702), (Start: 11 @117708 has 3 MA's), (Start: 12 @117720 has 8 MA's), (Start: 13 @117726 has 16 MA's), (19, 117825),

Gene: TomSawyer_264 Start: 120639, Stop: 120770, Start Num: 11

Candidate Starts for TomSawyer_264:

(3, 120582), (6, 120612), (Start: 7 @120621 has 16 MA's), (10, 120633), (Start: 11 @120639 has 3 MA's), (Start: 12 @120651 has 8 MA's), (Start: 13 @120657 has 16 MA's), (19, 120756),

Gene: Tribute_245 Start: 121978, Stop: 122112, Start Num: 7

Candidate Starts for Tribute_245:

(3, 121939), (4, 121954), (Start: 7 @121978 has 16 MA's), (9, 121987), (10, 121990), (Start: 11 @121996 has 3 MA's), (Start: 12 @122008 has 8 MA's), (Start: 13 @122014 has 16 MA's),

Gene: Wipeout_251 Start: 119609, Stop: 119722, Start Num: 13

Candidate Starts for Wipeout_251:

(3, 119534), (6, 119564), (Start: 7 @119573 has 16 MA's), (10, 119585), (Start: 11 @119591 has 3 MA's), (Start: 12 @119603 has 8 MA's), (Start: 13 @119609 has 16 MA's), (19, 119708),

Gene: Yaboi_261 Start: 118301, Stop: 118417, Start Num: 13

Candidate Starts for Yaboi_261:

(1, 118148), (6, 118256), (Start: 7 @118265 has 16 MA's), (8, 118271), (Start: 11 @118283 has 3 MA's), (Start: 12 @118295 has 8 MA's), (Start: 13 @118301 has 16 MA's), (14, 118316),