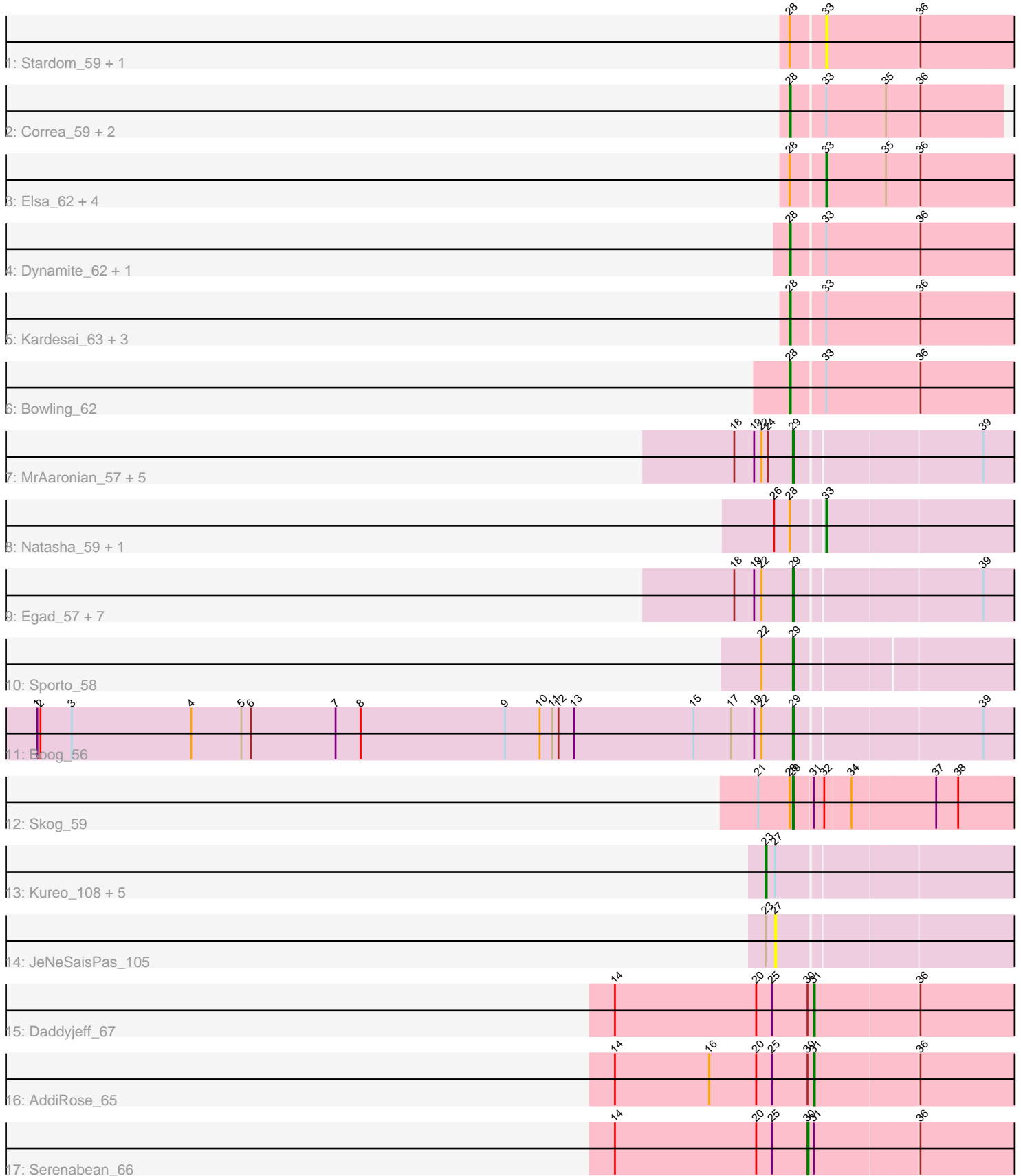


Pham 308807



Note: Tracks are now grouped by subcluster and scaled. Switching in subcluster is indicated by changes in track color. Track scale is now set by default to display the region 30 bp upstream of start 1 to 30 bp downstream of the last possible start. If this default region is judged to be packed too tightly with annotated starts, the track will be further scaled to only show that region of the ORF with annotated starts. This action will be indicated by adding "Zoomed" to the title. For starts, yellow indicates the location of called starts comprised solely of Glimmer/GeneMark auto-annotations, green indicates the location of called starts with at least 1 manual gene annotation.

## Pham 308807 Report

This analysis was run 06/27/26 on database version 652.

Pham number 308807 has 46 members, 6 are drafts.

Phages represented in each track:

- Track 1 : Stardom\_59, YoshiYama\_62
- Track 2 : Correa\_59, Tribby\_64, Hankly\_61
- Track 3 : Elsa\_62, Nason\_62, Cheesy\_62, Xenomorph\_59, Arcadia\_62
- Track 4 : Dynamite\_62, NapoleonB\_62
- Track 5 : Kardesai\_63, Mooshroom\_64, Benllo\_61, BenitoAntonio\_62
- Track 6 : Bowling\_62
- Track 7 : MrAaronian\_57, Djungelskog\_56, Stayer\_57, Sloopyjoe\_57, BronxBay\_57, Michelle\_57
- Track 8 : Natasha\_59, RustyBoy\_59
- Track 9 : Egad\_57, DoctorPepper\_56, Salk\_57, Jeremy4pt0\_56, Linda\_57, StarLord\_57, ProfFrink\_57, Shiba\_56
- Track 10 : Sporto\_58
- Track 11 : Boog\_56
- Track 12 : Skog\_59
- Track 13 : Kureo\_108, Elver\_110, Gandionco\_107, Marianna39\_108, Paella\_110, Qui\_110
- Track 14 : JeNeSaisPas\_105
- Track 15 : Daddyjeff\_67
- Track 16 : AddiRose\_65
- Track 17 : Serenabean\_66

### ***Summary of Final Annotations (See graph section above for start numbers):***

The start number called the most often in the published annotations is 29, it was called in 17 of the 40 non-draft genes in the pham.

Genes that call this "Most Annotated" start:

- Boog\_56, BronxBay\_57, Djungelskog\_56, DoctorPepper\_56, Egad\_57, Jeremy4pt0\_56, Linda\_57, Michelle\_57, MrAaronian\_57, ProfFrink\_57, Salk\_57, Shiba\_56, Skog\_59, Sloopyjoe\_57, Sporto\_58, StarLord\_57, Stayer\_57,

Genes that have the "Most Annotated" start but do not call it:

-

Genes that do not have the "Most Annotated" start:

- AddiRose\_65, Arcadia\_62, BenitoAntonio\_62, Benllo\_61, Bowling\_62, Cheesy\_62, Correa\_59, Daddyjeff\_67, Dynamite\_62, Elsa\_62, Elver\_110, Gandionco\_107, Hankly\_61, JeNeSaisPas\_105, Kardesai\_63, Kureo\_108, Marianna39\_108, Mooshroom\_64, NapoleonB\_62, Nason\_62, Natasha\_59, Paella\_110, Qui\_110, RustyBoy\_59, Serenabean\_66, Stardom\_59, Tribby\_64, Xenomorph\_59, YoshiYama\_62,

### Summary by start number:

Start 23:

- Found in 7 of 46 ( 15.2% ) of genes in pham
- Manual Annotations of this start: 3 of 40
- Called 85.7% of time when present
- Phage (with cluster) where this start called: Elver\_110 (FK), Gandionco\_107 (FK), Kureo\_108 (FK), Marianna39\_108 (FK), Paella\_110 (FK), Qui\_110 (FK),

Start 27:

- Found in 7 of 46 ( 15.2% ) of genes in pham
- No Manual Annotations of this start.
- Called 14.3% of time when present
- Phage (with cluster) where this start called: JeNeSaisPas\_105 (FK),

Start 28:

- Found in 20 of 46 ( 43.5% ) of genes in pham
- Manual Annotations of this start: 10 of 40
- Called 50.0% of time when present
- Phage (with cluster) where this start called: BenitoAntonio\_62 (AM), Benllo\_61 (AM), Bowling\_62 (AM), Correa\_59 (AM), Dynamite\_62 (AM), Hankly\_61 (AM), Kardesai\_63 (AM), Mooshroom\_64 (AM), NapoleonB\_62 (AM), Tribby\_64 (AM),

Start 29:

- Found in 17 of 46 ( 37.0% ) of genes in pham
- Manual Annotations of this start: 17 of 40
- Called 100.0% of time when present
- Phage (with cluster) where this start called: Boog\_56 (AW), BronxBay\_57 (AW), Djungelskog\_56 (AW), DoctorPepper\_56 (AW), Egad\_57 (AW), Jeremy4pt0\_56 (AW), Linda\_57 (AW), Michelle\_57 (AW), MrAaronian\_57 (AW), ProfFrink\_57 (AW), Salk\_57 (AW), Shiba\_56 (AW), Skog\_59 (DO), Sloopyjoe\_57 (AW), Sporto\_58 (AW), StarLord\_57 (AW), Stayer\_57 (AW),

Start 30:

- Found in 3 of 46 ( 6.5% ) of genes in pham
- Manual Annotations of this start: 1 of 40
- Called 33.3% of time when present
- Phage (with cluster) where this start called: Serenabean\_66 (JA),

Start 31:

- Found in 4 of 46 ( 8.7% ) of genes in pham
- Manual Annotations of this start: 2 of 40
- Called 50.0% of time when present
- Phage (with cluster) where this start called: AddiRose\_65 (JA), Daddyjeff\_67 (JA),

Start 33:

- Found in 19 of 46 ( 41.3% ) of genes in pham
- Manual Annotations of this start: 7 of 40
- Called 47.4% of time when present
- Phage (with cluster) where this start called: Arcadia\_62 (AM), Cheesy\_62 (AM), Elsa\_62 (AM), Nason\_62 (AM), Natasha\_59 (AW), RustyBoy\_59 (AW), Stardom\_59 (AM), Xenomorph\_59 (AM), YoshiYama\_62 (AM),

### **Summary by clusters:**

There are 5 clusters represented in this pham: DO, FK, AM, JA, AW,

Info for manual annotations of cluster AM:

- Start number 28 was manually annotated 10 times for cluster AM.
- Start number 33 was manually annotated 5 times for cluster AM.

Info for manual annotations of cluster AW:

- Start number 29 was manually annotated 16 times for cluster AW.
- Start number 33 was manually annotated 2 times for cluster AW.

Info for manual annotations of cluster DO:

- Start number 29 was manually annotated 1 time for cluster DO.

Info for manual annotations of cluster FK:

- Start number 23 was manually annotated 3 times for cluster FK.

Info for manual annotations of cluster JA:

- Start number 30 was manually annotated 1 time for cluster JA.
- Start number 31 was manually annotated 2 times for cluster JA.

### **Gene Information:**

Gene: AddiRose\_65 Start: 42995, Stop: 43180, Start Num: 31

Candidate Starts for AddiRose\_65:

(14, 42806), (16, 42896), (20, 42941), (25, 42956), (Start: 30 @42989 has 1 MA's), (Start: 31 @42995 has 2 MA's), (36, 43091),

Gene: Arcadia\_62 Start: 41331, Stop: 41522, Start Num: 33

Candidate Starts for Arcadia\_62:

(Start: 28 @41301 has 10 MA's), (Start: 33 @41331 has 7 MA's), (35, 41388), (36, 41418),

Gene: BenitoAntonio\_62 Start: 40828, Stop: 41037, Start Num: 28

Candidate Starts for BenitoAntonio\_62:

(Start: 28 @40828 has 10 MA's), (Start: 33 @40858 has 7 MA's), (36, 40945),

Gene: Benllo\_61 Start: 41506, Stop: 41715, Start Num: 28

Candidate Starts for Benllo\_61:

(Start: 28 @41506 has 10 MA's), (Start: 33 @41536 has 7 MA's), (36, 41623),

Gene: Boog\_56 Start: 40076, Stop: 40321, Start Num: 29

Candidate Starts for Boog\_56:

(1, 39356), (2, 39359), (3, 39389), (4, 39503), (5, 39551), (6, 39560), (7, 39641), (8, 39665), (9, 39803), (10, 39836), (11, 39848), (12, 39854), (13, 39869), (15, 39983), (17, 40019), (19, 40040), (22, 40046), (Start: 29 @40076 has 17 MA's), (39, 40244),

Gene: Bowling\_62 Start: 41144, Stop: 41350, Start Num: 28  
Candidate Starts for Bowling\_62:  
(Start: 28 @41144 has 10 MA's), (Start: 33 @41174 has 7 MA's), (36, 41261),

Gene: BronxBay\_57 Start: 40332, Stop: 40577, Start Num: 29  
Candidate Starts for BronxBay\_57:  
(18, 40278), (19, 40296), (22, 40302), (24, 40308), (Start: 29 @40332 has 17 MA's), (39, 40500),

Gene: Cheesy\_62 Start: 41037, Stop: 41201, Start Num: 33  
Candidate Starts for Cheesy\_62:  
(Start: 28 @41007 has 10 MA's), (Start: 33 @41037 has 7 MA's), (35, 41094), (36, 41124),

Gene: Correa\_59 Start: 40168, Stop: 40362, Start Num: 28  
Candidate Starts for Correa\_59:  
(Start: 28 @40168 has 10 MA's), (Start: 33 @40198 has 7 MA's), (35, 40255), (36, 40285),

Gene: Daddyjeff\_67 Start: 43414, Stop: 43599, Start Num: 31  
Candidate Starts for Daddyjeff\_67:  
(14, 43225), (20, 43360), (25, 43375), (Start: 30 @43408 has 1 MA's), (Start: 31 @43414 has 2 MA's), (36, 43510),

Gene: Djungelskog\_56 Start: 40331, Stop: 40576, Start Num: 29  
Candidate Starts for Djungelskog\_56:  
(18, 40277), (19, 40295), (22, 40301), (24, 40307), (Start: 29 @40331 has 17 MA's), (39, 40499),

Gene: DoctorPepper\_56 Start: 40036, Stop: 40281, Start Num: 29  
Candidate Starts for DoctorPepper\_56:  
(18, 39982), (19, 40000), (22, 40006), (Start: 29 @40036 has 17 MA's), (39, 40204),

Gene: Dynamite\_62 Start: 41221, Stop: 41427, Start Num: 28  
Candidate Starts for Dynamite\_62:  
(Start: 28 @41221 has 10 MA's), (Start: 33 @41251 has 7 MA's), (36, 41338),

Gene: Egad\_57 Start: 40333, Stop: 40578, Start Num: 29  
Candidate Starts for Egad\_57:  
(18, 40279), (19, 40297), (22, 40303), (Start: 29 @40333 has 17 MA's), (39, 40501),

Gene: Elsa\_62 Start: 41331, Stop: 41522, Start Num: 33  
Candidate Starts for Elsa\_62:  
(Start: 28 @41301 has 10 MA's), (Start: 33 @41331 has 7 MA's), (35, 41388), (36, 41418),

Gene: Elver\_110 Start: 62996, Stop: 63229, Start Num: 23  
Candidate Starts for Elver\_110:  
(Start: 23 @62996 has 3 MA's), (27, 63005),

Gene: Gandionco\_107 Start: 61810, Stop: 62043, Start Num: 23  
Candidate Starts for Gandionco\_107:  
(Start: 23 @61810 has 3 MA's), (27, 61819),

Gene: Hankly\_61 Start: 40436, Stop: 40642, Start Num: 28  
Candidate Starts for Hankly\_61:  
(Start: 28 @40436 has 10 MA's), (Start: 33 @40466 has 7 MA's), (35, 40523), (36, 40553),

Gene: JeNeSaisPas\_105 Start: 62423, Stop: 62647, Start Num: 27  
Candidate Starts for JeNeSaisPas\_105:  
(Start: 23 @62414 has 3 MA's), (27, 62423),

Gene: Jeremy4pt0\_56 Start: 40031, Stop: 40276, Start Num: 29  
Candidate Starts for Jeremy4pt0\_56:  
(18, 39977), (19, 39995), (22, 40001), (Start: 29 @40031 has 17 MA's), (39, 40199),

Gene: Kardesai\_63 Start: 41403, Stop: 41612, Start Num: 28  
Candidate Starts for Kardesai\_63:  
(Start: 28 @41403 has 10 MA's), (Start: 33 @41433 has 7 MA's), (36, 41520),

Gene: Kureo\_108 Start: 62006, Stop: 62239, Start Num: 23  
Candidate Starts for Kureo\_108:  
(Start: 23 @62006 has 3 MA's), (27, 62015),

Gene: Linda\_57 Start: 40329, Stop: 40574, Start Num: 29  
Candidate Starts for Linda\_57:  
(18, 40275), (19, 40293), (22, 40299), (Start: 29 @40329 has 17 MA's), (39, 40497),

Gene: Marianna39\_108 Start: 62421, Stop: 62654, Start Num: 23  
Candidate Starts for Marianna39\_108:  
(Start: 23 @62421 has 3 MA's), (27, 62430),

Gene: Michelle\_57 Start: 40331, Stop: 40576, Start Num: 29  
Candidate Starts for Michelle\_57:  
(18, 40277), (19, 40295), (22, 40301), (24, 40307), (Start: 29 @40331 has 17 MA's), (39, 40499),

Gene: Mooshroom\_64 Start: 41403, Stop: 41612, Start Num: 28  
Candidate Starts for Mooshroom\_64:  
(Start: 28 @41403 has 10 MA's), (Start: 33 @41433 has 7 MA's), (36, 41520),

Gene: MrAaronian\_57 Start: 40331, Stop: 40576, Start Num: 29  
Candidate Starts for MrAaronian\_57:  
(18, 40277), (19, 40295), (22, 40301), (24, 40307), (Start: 29 @40331 has 17 MA's), (39, 40499),

Gene: NapoleonB\_62 Start: 41221, Stop: 41427, Start Num: 28  
Candidate Starts for NapoleonB\_62:  
(Start: 28 @41221 has 10 MA's), (Start: 33 @41251 has 7 MA's), (36, 41338),

Gene: Nason\_62 Start: 41331, Stop: 41522, Start Num: 33  
Candidate Starts for Nason\_62:  
(Start: 28 @41301 has 10 MA's), (Start: 33 @41331 has 7 MA's), (35, 41388), (36, 41418),

Gene: Natasha\_59 Start: 40285, Stop: 40518, Start Num: 33  
Candidate Starts for Natasha\_59:  
(26, 40243), (Start: 28 @40258 has 10 MA's), (Start: 33 @40285 has 7 MA's),

Gene: Paella\_110 Start: 63586, Stop: 63819, Start Num: 23

Candidate Starts for Paella\_110:  
(Start: 23 @63586 has 3 MA's), (27, 63595),

Gene: ProfFrink\_57 Start: 40332, Stop: 40577, Start Num: 29  
Candidate Starts for ProfFrink\_57:  
(18, 40278), (19, 40296), (22, 40302), (Start: 29 @40332 has 17 MA's), (39, 40500),

Gene: Qui\_110 Start: 63586, Stop: 63819, Start Num: 23  
Candidate Starts for Qui\_110:  
(Start: 23 @63586 has 3 MA's), (27, 63595),

Gene: RustyBoy\_59 Start: 40266, Stop: 40499, Start Num: 33  
Candidate Starts for RustyBoy\_59:  
(26, 40224), (Start: 28 @40239 has 10 MA's), (Start: 33 @40266 has 7 MA's),

Gene: Salk\_57 Start: 40329, Stop: 40574, Start Num: 29  
Candidate Starts for Salk\_57:  
(18, 40275), (19, 40293), (22, 40299), (Start: 29 @40329 has 17 MA's), (39, 40497),

Gene: Serenabean\_66 Start: 43300, Stop: 43491, Start Num: 30  
Candidate Starts for Serenabean\_66:  
(14, 43117), (20, 43252), (25, 43267), (Start: 30 @43300 has 1 MA's), (Start: 31 @43306 has 2 MA's),  
(36, 43402),

Gene: Shiba\_56 Start: 40029, Stop: 40274, Start Num: 29  
Candidate Starts for Shiba\_56:  
(18, 39975), (19, 39993), (22, 39999), (Start: 29 @40029 has 17 MA's), (39, 40197),

Gene: Skog\_59 Start: 24389, Stop: 24598, Start Num: 29  
Candidate Starts for Skog\_59:  
(21, 24356), (Start: 28 @24386 has 10 MA's), (Start: 29 @24389 has 17 MA's), (Start: 31 @24407 has  
2 MA's), (32, 24416), (34, 24440), (37, 24518), (38, 24539),

Gene: Sloopyjoe\_57 Start: 40333, Stop: 40578, Start Num: 29  
Candidate Starts for Sloopyjoe\_57:  
(18, 40279), (19, 40297), (22, 40303), (24, 40309), (Start: 29 @40333 has 17 MA's), (39, 40501),

Gene: Sporto\_58 Start: 41792, Stop: 42043, Start Num: 29  
Candidate Starts for Sporto\_58:  
(22, 41762), (Start: 29 @41792 has 17 MA's),

Gene: StarLord\_57 Start: 40332, Stop: 40577, Start Num: 29  
Candidate Starts for StarLord\_57:  
(18, 40278), (19, 40296), (22, 40302), (Start: 29 @40332 has 17 MA's), (39, 40500),

Gene: Stardom\_59 Start: 39995, Stop: 40171, Start Num: 33  
Candidate Starts for Stardom\_59:  
(Start: 28 @39965 has 10 MA's), (Start: 33 @39995 has 7 MA's), (36, 40082),

Gene: Stayer\_57 Start: 40329, Stop: 40574, Start Num: 29  
Candidate Starts for Stayer\_57:  
(18, 40275), (19, 40293), (22, 40299), (24, 40305), (Start: 29 @40329 has 17 MA's), (39, 40497),

Gene: Tribby\_64 Start: 41554, Stop: 41748, Start Num: 28

Candidate Starts for Tribby\_64:

(Start: 28 @41554 has 10 MA's), (Start: 33 @41584 has 7 MA's), (35, 41641), (36, 41671),

Gene: Xenomorph\_59 Start: 41002, Stop: 41193, Start Num: 33

Candidate Starts for Xenomorph\_59:

(Start: 28 @40972 has 10 MA's), (Start: 33 @41002 has 7 MA's), (35, 41059), (36, 41089),

Gene: YoshiYama\_62 Start: 41641, Stop: 41817, Start Num: 33

Candidate Starts for YoshiYama\_62:

(Start: 28 @41611 has 10 MA's), (Start: 33 @41641 has 7 MA's), (36, 41728),