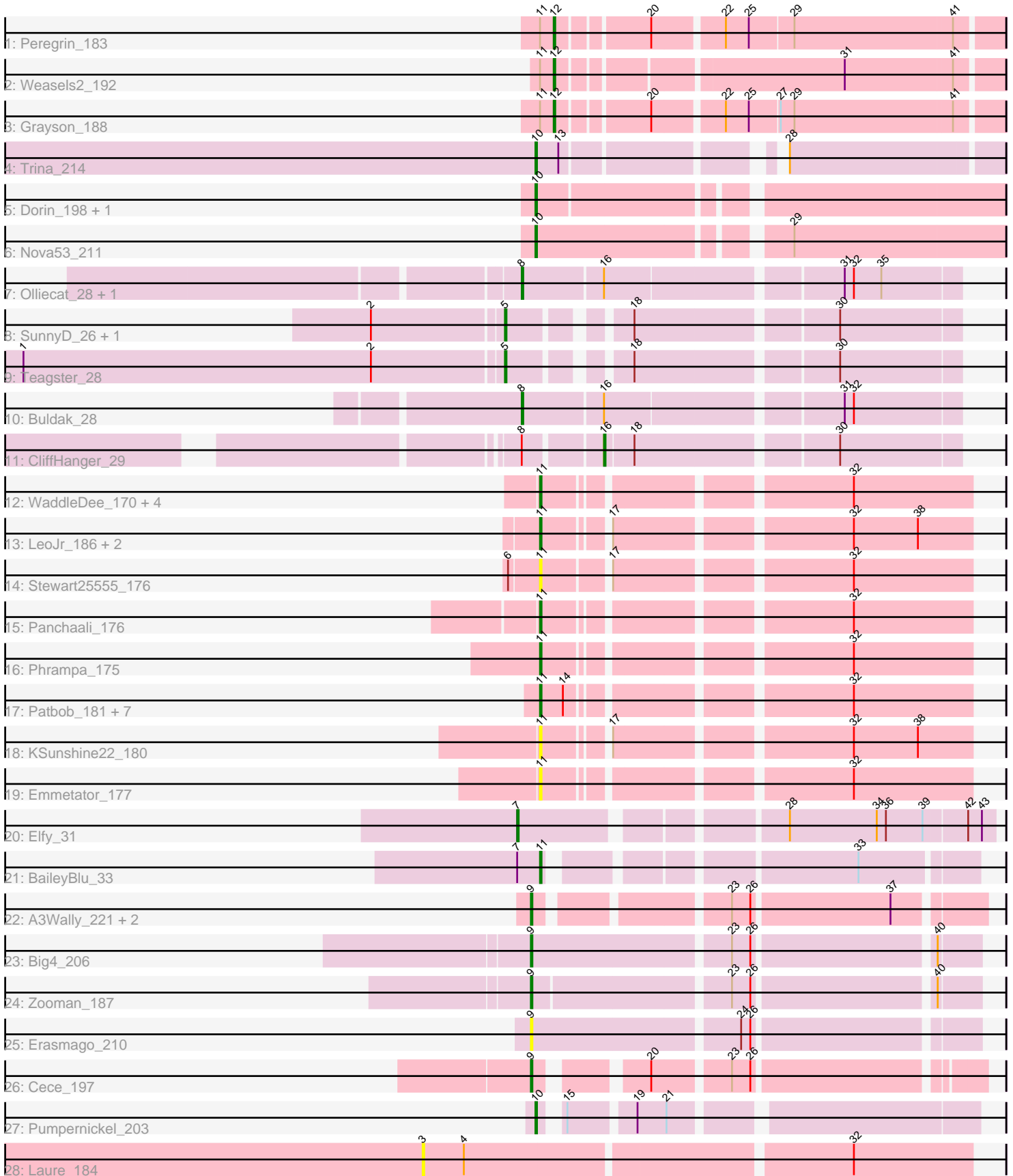


Pham 308808



Note: Tracks are now grouped by subcluster and scaled. Switching in subcluster is indicated by changes in track color. Track scale is now set by default to display the region 30 bp upstream of start 1 to 30 bp downstream of the last possible start. If this default region is judged to be packed too tightly with annotated starts, the track will be further scaled to only show that region of the ORF with annotated starts. This action will be indicated by adding "Zoomed" to the title. For starts, yellow indicates the location of called starts comprised solely of Glimmer/GeneMark auto-annotations, green indicates the location of called starts with at least 1 manual gene annotation.

Pham 308808 Report

This analysis was run 06/27/26 on database version 652.

Pham number 308808 has 46 members, 12 are drafts.

Phages represented in each track:

- Track 1 : Peregrin_183
- Track 2 : Weasels2_192
- Track 3 : Grayson_188
- Track 4 : Trina_214
- Track 5 : Dorin_198, Francesca_200
- Track 6 : Nova53_211
- Track 7 : Olliecat_28, Squircle_28
- Track 8 : SunnyD_26, Shayna_26
- Track 9 : Teagster_28
- Track 10 : Buldak_28
- Track 11 : CliffHanger_29
- Track 12 : WaddleDee_170, BooTeria_182, DunneganBoMo_174, Ellewin_174, Artu_177
- Track 13 : LeoJr_186, ReginaGlobina_190, Atuin_177
- Track 14 : Stewart25555_176
- Track 15 : Panchaali_176
- Track 16 : Phrampa_175
- Track 17 : Patbob_181, GoldenEssence_170, Bloom_187, FloraSnap32_180, Racecar_184, Talia1610_184, Mimi_183, FrostedClock_186
- Track 18 : KSunshine22_180
- Track 19 : Emmetator_177
- Track 20 : Elfy_31
- Track 21 : BaileyBlu_33
- Track 22 : A3Wally_221, PauloDiaboli_221, Dodo_217
- Track 23 : Big4_206
- Track 24 : Zooman_187
- Track 25 : Erasmago_210
- Track 26 : Cece_197
- Track 27 : Pumpernickel_203
- Track 28 : Laure_184

Summary of Final Annotations (See graph section above for start numbers):

The start number called the most often in the published annotations is 11, it was called in 12 of the 34 non-draft genes in the pham.

Genes that call this "Most Annotated" start:

- Artu_177, Atuin_177, BaileyBlu_33, Bloom_187, BooTeria_182, DunneganBoMo_174, Ellewin_174, Emmetator_177, FloraSnap32_180, FrostedClock_186, GoldenEssence_170, KSunshine22_180, LeoJr_186, Mimi_183, Panchaali_176, Patbob_181, Phrampa_175, Racecar_184, ReginaGlobina_190, Stewart25555_176, Talia1610_184, WaddleDee_170,

Genes that have the "Most Annotated" start but do not call it:

- Grayson_188, Peregrin_183, Weasels2_192,

Genes that do not have the "Most Annotated" start:

- A3Wally_221, Big4_206, Buldak_28, Cece_197, CliffHanger_29, Dodo_217, Dorin_198, Elfy_31, Erasmago_210, Francesca_200, Laure_184, Nova53_211, Olliecat_28, PauloDiaboli_221, Pumpernickel_203, Shayna_26, Squircle_28, SunnyD_26, Teagster_28, Trina_214, Zooman_187,

Summary by start number:

Start 3:

- Found in 1 of 46 (2.2%) of genes in pham
- No Manual Annotations of this start.
- Called 100.0% of time when present
- Phage (with cluster) where this start called: Laure_184 (UNK),

Start 5:

- Found in 3 of 46 (6.5%) of genes in pham
- Manual Annotations of this start: 3 of 34
- Called 100.0% of time when present
- Phage (with cluster) where this start called: Shayna_26 (EB), SunnyD_26 (EB), Teagster_28 (EB),

Start 7:

- Found in 2 of 46 (4.3%) of genes in pham
- Manual Annotations of this start: 1 of 34
- Called 50.0% of time when present
- Phage (with cluster) where this start called: Elfy_31 (FP),

Start 8:

- Found in 4 of 46 (8.7%) of genes in pham
- Manual Annotations of this start: 3 of 34
- Called 75.0% of time when present
- Phage (with cluster) where this start called: Buldak_28 (EB), Olliecat_28 (EB), Squircle_28 (EB),

Start 9:

- Found in 7 of 46 (15.2%) of genes in pham
- Manual Annotations of this start: 6 of 34
- Called 100.0% of time when present
- Phage (with cluster) where this start called: A3Wally_221 (GD1), Big4_206 (GD2), Cece_197 (GD3), Dodo_217 (GD1), Erasmago_210 (GD2), PauloDiaboli_221 (GD1),

Zooman_187 (GD2),

Start 10:

- Found in 5 of 46 (10.9%) of genes in pham
- Manual Annotations of this start: 5 of 34
- Called 100.0% of time when present
- Phage (with cluster) where this start called: Dorin_198 (CG), Francesca_200 (CG), Nova53_211 (CG), Pumpernickel_203 (GD4), Trina_214 (CE),

Start 11:

- Found in 25 of 46 (54.3%) of genes in pham
- Manual Annotations of this start: 12 of 34
- Called 88.0% of time when present
- Phage (with cluster) where this start called: Artu_177 (FC), Atuin_177 (FC), BaileyBlu_33 (FP), Bloom_187 (FC), BooTeria_182 (FC), DunneganBoMo_174 (FC), Ellewin_174 (FC), Emmetator_177 (FC), FloraSnap32_180 (FC), FrostedClock_186 (FC), GoldenEssence_170 (FC), KSunshine22_180 (FC), LeoJr_186 (FC), Mimi_183 (FC), Panchaali_176 (FC), Patbob_181 (FC), Phrampa_175 (FC), Racecar_184 (FC), ReginaGlobina_190 (FC), Stewart25555_176 (FC), Talia1610_184 (FC), WaddleDee_170 (FC),

Start 12:

- Found in 3 of 46 (6.5%) of genes in pham
- Manual Annotations of this start: 3 of 34
- Called 100.0% of time when present
- Phage (with cluster) where this start called: Grayson_188 (CB), Peregrin_183 (CB), Weasels2_192 (CB),

Start 16:

- Found in 4 of 46 (8.7%) of genes in pham
- Manual Annotations of this start: 1 of 34
- Called 25.0% of time when present
- Phage (with cluster) where this start called: CliffHanger_29 (EB),

Summary by clusters:

There are 11 clusters represented in this pham: FP, GD1, GD2, GD3, GD4, CB, CG, CE, EB, FC, UNK,

Info for manual annotations of cluster CB:

- Start number 12 was manually annotated 3 times for cluster CB.

Info for manual annotations of cluster CE:

- Start number 10 was manually annotated 1 time for cluster CE.

Info for manual annotations of cluster CG:

- Start number 10 was manually annotated 3 times for cluster CG.

Info for manual annotations of cluster EB:

- Start number 5 was manually annotated 3 times for cluster EB.
- Start number 8 was manually annotated 3 times for cluster EB.
- Start number 16 was manually annotated 1 time for cluster EB.

Info for manual annotations of cluster FC:

- Start number 11 was manually annotated 11 times for cluster FC.

Info for manual annotations of cluster FP:

- Start number 7 was manually annotated 1 time for cluster FP.
- Start number 11 was manually annotated 1 time for cluster FP.

Info for manual annotations of cluster GD1:

- Start number 9 was manually annotated 3 times for cluster GD1.

Info for manual annotations of cluster GD2:

- Start number 9 was manually annotated 2 times for cluster GD2.

Info for manual annotations of cluster GD3:

- Start number 9 was manually annotated 1 time for cluster GD3.

Info for manual annotations of cluster GD4:

- Start number 10 was manually annotated 1 time for cluster GD4.

Gene Information:

Gene: A3Wally_221 Start: 119347, Stop: 119087, Start Num: 9

Candidate Starts for A3Wally_221:

(Start: 9 @119347 has 6 MA's), (23, 119239), (26, 119227), (37, 119140),

Gene: Artu_177 Start: 120610, Stop: 120864, Start Num: 11

Candidate Starts for Artu_177:

(Start: 11 @120610 has 12 MA's), (32, 120787),

Gene: Atuin_177 Start: 122575, Stop: 122829, Start Num: 11

Candidate Starts for Atuin_177:

(Start: 11 @122575 has 12 MA's), (17, 122611), (32, 122752), (38, 122794),

Gene: BaileyBlu_33 Start: 24089, Stop: 24334, Start Num: 11

Candidate Starts for BaileyBlu_33:

(Start: 7 @24074 has 1 MA's), (Start: 11 @24089 has 12 MA's), (33, 24263),

Gene: Big4_206 Start: 115772, Stop: 115500, Start Num: 9

Candidate Starts for Big4_206:

(Start: 9 @115772 has 6 MA's), (23, 115649), (26, 115637), (40, 115526),

Gene: Bloom_187 Start: 122149, Stop: 122403, Start Num: 11

Candidate Starts for Bloom_187:

(Start: 11 @122149 has 12 MA's), (14, 122164), (32, 122326),

Gene: BooTeria_182 Start: 120032, Stop: 120286, Start Num: 11

Candidate Starts for BooTeria_182:

(Start: 11 @120032 has 12 MA's), (32, 120209),

Gene: Buldak_28 Start: 20601, Stop: 20870, Start Num: 8

Candidate Starts for Buldak_28:

(Start: 8 @20601 has 3 MA's), (Start: 16 @20652 has 1 MA's), (31, 20796), (32, 20802),

Gene: Cece_197 Start: 120223, Stop: 119972, Start Num: 9

Candidate Starts for Cece_197:

(Start: 9 @120223 has 6 MA's), (20, 120166), (23, 120121), (26, 120109),

Gene: CliffHanger_29 Start: 20337, Stop: 20555, Start Num: 16

Candidate Starts for CliffHanger_29:

(Start: 8 @20292 has 3 MA's), (Start: 16 @20337 has 1 MA's), (18, 20355), (30, 20478),

Gene: Dodo_217 Start: 119149, Stop: 118889, Start Num: 9

Candidate Starts for Dodo_217:

(Start: 9 @119149 has 6 MA's), (23, 119041), (26, 119029), (37, 118942),

Gene: Dorin_198 Start: 108945, Stop: 109226, Start Num: 10

Candidate Starts for Dorin_198:

(Start: 10 @108945 has 5 MA's),

Gene: DunneganBoMo_174 Start: 119214, Stop: 119468, Start Num: 11

Candidate Starts for DunneganBoMo_174:

(Start: 11 @119214 has 12 MA's), (32, 119391),

Gene: Elfy_31 Start: 23896, Stop: 24180, Start Num: 7

Candidate Starts for Elfy_31:

(Start: 7 @23896 has 1 MA's), (28, 24049), (34, 24106), (36, 24112), (39, 24136), (42, 24163), (43, 24172),

Gene: Ellewin_174 Start: 119388, Stop: 119642, Start Num: 11

Candidate Starts for Ellewin_174:

(Start: 11 @119388 has 12 MA's), (32, 119565),

Gene: Emmetator_177 Start: 119534, Stop: 119788, Start Num: 11

Candidate Starts for Emmetator_177:

(Start: 11 @119534 has 12 MA's), (32, 119711),

Gene: Erasmago_210 Start: 114028, Stop: 113756, Start Num: 9

Candidate Starts for Erasmago_210:

(Start: 9 @114028 has 6 MA's), (24, 113899), (26, 113893),

Gene: FloraSnap32_180 Start: 120480, Stop: 120734, Start Num: 11

Candidate Starts for FloraSnap32_180:

(Start: 11 @120480 has 12 MA's), (14, 120495), (32, 120657),

Gene: Francesca_200 Start: 109865, Stop: 110146, Start Num: 10

Candidate Starts for Francesca_200:

(Start: 10 @109865 has 5 MA's),

Gene: FrostedClock_186 Start: 122724, Stop: 122978, Start Num: 11

Candidate Starts for FrostedClock_186:

(Start: 11 @122724 has 12 MA's), (14, 122739), (32, 122901),

Gene: GoldenEssence_170 Start: 115722, Stop: 115976, Start Num: 11

Candidate Starts for GoldenEssence_170:
(Start: 11 @115722 has 12 MA's), (14, 115737), (32, 115899),

Gene: Grayson_188 Start: 98685, Stop: 98954, Start Num: 12
Candidate Starts for Grayson_188:
(Start: 11 @98676 has 12 MA's), (Start: 12 @98685 has 3 MA's), (20, 98739), (22, 98781), (25, 98796),
(27, 98814), (29, 98823), (41, 98925),

Gene: KSunshine22_180 Start: 121028, Stop: 121282, Start Num: 11
Candidate Starts for KSunshine22_180:
(Start: 11 @121028 has 12 MA's), (17, 121064), (32, 121205), (38, 121247),

Gene: Laure_184 Start: 113724, Stop: 114068, Start Num: 3
Candidate Starts for Laure_184:
(3, 113724), (4, 113751), (32, 113991),

Gene: LeoJr_186 Start: 123129, Stop: 123383, Start Num: 11
Candidate Starts for LeoJr_186:
(Start: 11 @123129 has 12 MA's), (17, 123165), (32, 123306), (38, 123348),

Gene: Mimi_183 Start: 121776, Stop: 122030, Start Num: 11
Candidate Starts for Mimi_183:
(Start: 11 @121776 has 12 MA's), (14, 121791), (32, 121953),

Gene: Nova53_211 Start: 113820, Stop: 114104, Start Num: 10
Candidate Starts for Nova53_211:
(Start: 10 @113820 has 5 MA's), (29, 113967),

Gene: Olliecat_28 Start: 20581, Stop: 20850, Start Num: 8
Candidate Starts for Olliecat_28:
(Start: 8 @20581 has 3 MA's), (Start: 16 @20632 has 1 MA's), (31, 20776), (32, 20782), (35, 20800),

Gene: Panchaali_176 Start: 120271, Stop: 120525, Start Num: 11
Candidate Starts for Panchaali_176:
(Start: 11 @120271 has 12 MA's), (32, 120448),

Gene: Patbob_181 Start: 122338, Stop: 122592, Start Num: 11
Candidate Starts for Patbob_181:
(Start: 11 @122338 has 12 MA's), (14, 122353), (32, 122515),

Gene: PauloDiaboli_221 Start: 117560, Stop: 117300, Start Num: 9
Candidate Starts for PauloDiaboli_221:
(Start: 9 @117560 has 6 MA's), (23, 117452), (26, 117440), (37, 117353),

Gene: Peregrin_183 Start: 97131, Stop: 97400, Start Num: 12
Candidate Starts for Peregrin_183:
(Start: 11 @97122 has 12 MA's), (Start: 12 @97131 has 3 MA's), (20, 97185), (22, 97227), (25, 97242),
(29, 97269), (41, 97371),

Gene: Phrampa_175 Start: 123930, Stop: 124184, Start Num: 11
Candidate Starts for Phrampa_175:
(Start: 11 @123930 has 12 MA's), (32, 124107),

Gene: Pumpernickel_203 Start: 117028, Stop: 116777, Start Num: 10
Candidate Starts for Pumpernickel_203:
(Start: 10 @117028 has 5 MA's), (15, 117019), (19, 116980), (21, 116962),

Gene: Racecar_184 Start: 122742, Stop: 122996, Start Num: 11
Candidate Starts for Racecar_184:
(Start: 11 @122742 has 12 MA's), (14, 122757), (32, 122919),

Gene: ReginaGlobina_190 Start: 124398, Stop: 124652, Start Num: 11
Candidate Starts for ReginaGlobina_190:
(Start: 11 @124398 has 12 MA's), (17, 124434), (32, 124575), (38, 124617),

Gene: Shayna_26 Start: 20524, Stop: 20787, Start Num: 5
Candidate Starts for Shayna_26:
(2, 20443), (Start: 5 @20524 has 3 MA's), (18, 20587), (30, 20710),

Gene: Squircle_28 Start: 20580, Stop: 20849, Start Num: 8
Candidate Starts for Squircle_28:
(Start: 8 @20580 has 3 MA's), (Start: 16 @20631 has 1 MA's), (31, 20775), (32, 20781), (35, 20799),

Gene: Stewart25555_176 Start: 121983, Stop: 122240, Start Num: 11
Candidate Starts for Stewart25555_176:
(6, 121965), (Start: 11 @121983 has 12 MA's), (17, 122022), (32, 122163),

Gene: SunnyD_26 Start: 20566, Stop: 20829, Start Num: 5
Candidate Starts for SunnyD_26:
(2, 20485), (Start: 5 @20566 has 3 MA's), (18, 20629), (30, 20752),

Gene: Talia1610_184 Start: 122159, Stop: 122413, Start Num: 11
Candidate Starts for Talia1610_184:
(Start: 11 @122159 has 12 MA's), (14, 122174), (32, 122336),

Gene: Teagster_28 Start: 21485, Stop: 21748, Start Num: 5
Candidate Starts for Teagster_28:
(1, 21176), (2, 21404), (Start: 5 @21485 has 3 MA's), (18, 21548), (30, 21671),

Gene: Trina_214 Start: 114781, Stop: 115047, Start Num: 10
Candidate Starts for Trina_214:
(Start: 10 @114781 has 5 MA's), (13, 114796), (28, 114913),

Gene: WaddleDee_170 Start: 118487, Stop: 118741, Start Num: 11
Candidate Starts for WaddleDee_170:
(Start: 11 @118487 has 12 MA's), (32, 118664),

Gene: Weasels2_192 Start: 102336, Stop: 102605, Start Num: 12
Candidate Starts for Weasels2_192:
(Start: 11 @102327 has 12 MA's), (Start: 12 @102336 has 3 MA's), (31, 102507), (41, 102576),

Gene: Zooman_187 Start: 111993, Stop: 111724, Start Num: 9
Candidate Starts for Zooman_187:
(Start: 9 @111993 has 6 MA's), (23, 111873), (26, 111861), (40, 111750),