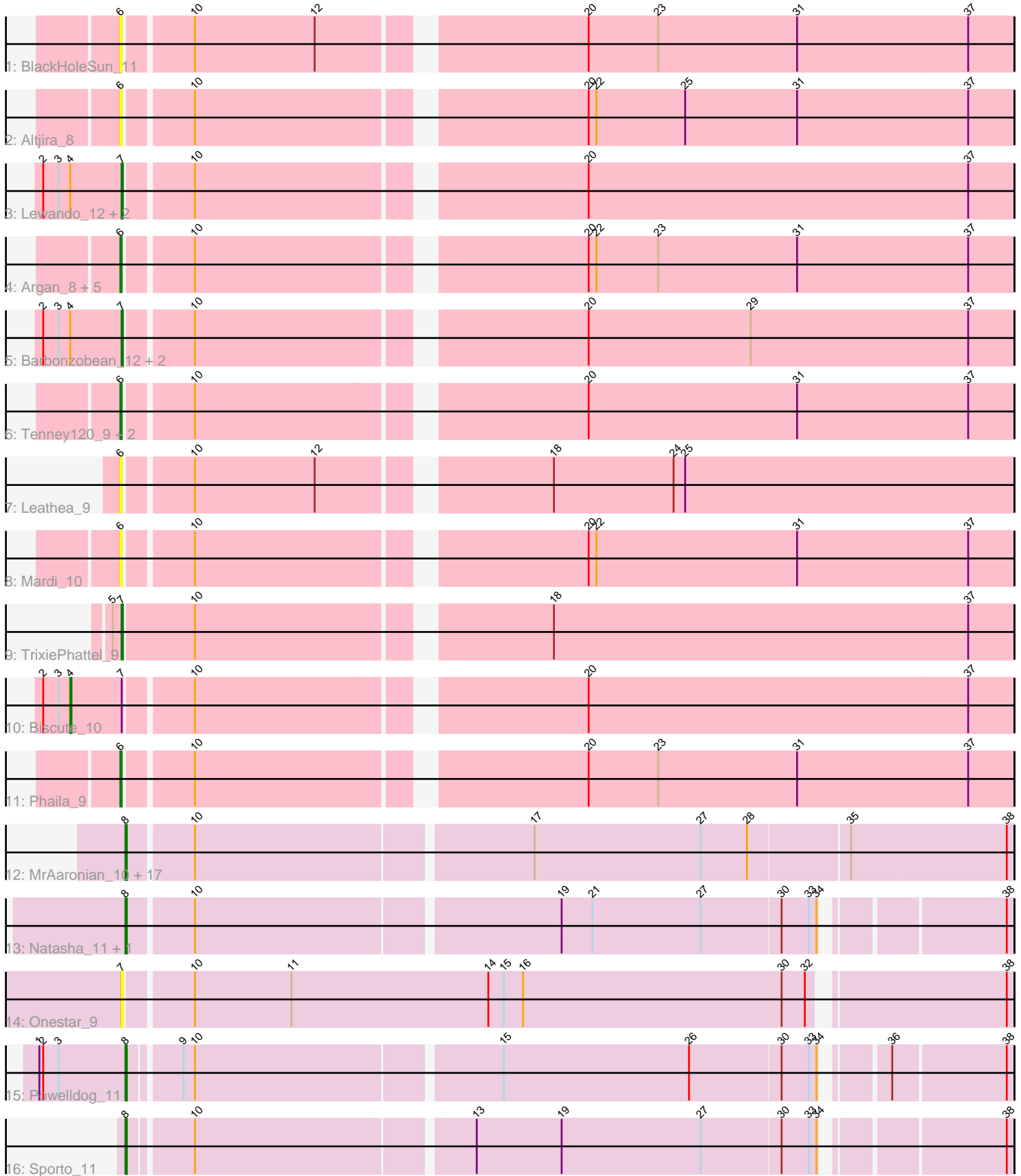


Pham 308809



Note: Tracks are now grouped by subcluster and scaled. Switching in subcluster is indicated by changes in track color. Track scale is now set by default to display the region 30 bp upstream of start 1 to 30 bp downstream of the last possible start. If this default region is judged to be packed too tightly with annotated starts, the track will be further scaled to only show that region of the ORF with annotated starts. This action will be indicated by adding "Zoomed" to the title. For starts, yellow indicates the location of called starts comprised solely of Glimmer/GeneMark auto-annotations, green indicates the location of called starts with at least 1 manual gene annotation.

Pham 308809 Report

This analysis was run 06/27/26 on database version 652.

Pham number 308809 has 45 members, 12 are drafts.

Phages represented in each track:

- Track 1 : BlackHoleSun_11
- Track 2 : Altjira_8
- Track 3 : Lewando_12, Muglass_12, Renaldo_14
- Track 4 : Argan_8, PoeMe_10, Stardrop_9, Zeina_9, KevinMinion_8, Navi1117_9
- Track 5 : Barbonzobean_12, BarbieDoll_13, Kinny_11
- Track 6 : Tenney120_9, Uzumaki_9, GantcherGoblin_8
- Track 7 : Leathea_9
- Track 8 : Mardi_10
- Track 9 : TrixiePhattel_9
- Track 10 : Biscute_10
- Track 11 : Phaila_9
- Track 12 : MrAaronian_10, Shiba_10, HerbBucket_9, Djungelskog_10, Spain_9, DoctorPepper_10, Raunak_10, ProfFrink_10, Jeremy4pt0_10, Salk_10, Boog_10, Stayer_10, Egad_10, BronxBay_10, Sloopyjoe_10, Linda_10, Michelle_10, StarLord_10
- Track 13 : Natasha_11, RustyBoy_11
- Track 14 : Onestar_9
- Track 15 : Powellldog_11
- Track 16 : Sporto_11

Summary of Final Annotations (See graph section above for start numbers):

The start number called the most often in the published annotations is 8, it was called in 19 of the 33 non-draft genes in the pham.

Genes that call this "Most Annotated" start:

- Boog_10, BronxBay_10, Djungelskog_10, DoctorPepper_10, Egad_10, HerbBucket_9, Jeremy4pt0_10, Linda_10, Michelle_10, MrAaronian_10, Natasha_11, Powellldog_11, ProfFrink_10, Raunak_10, RustyBoy_11, Salk_10, Shiba_10, Sloopyjoe_10, Spain_9, Sporto_11, StarLord_10, Stayer_10,

Genes that have the "Most Annotated" start but do not call it:

-

Genes that do not have the "Most Annotated" start:

- Altjira_8, Argan_8, BarbieDoll_13, Barbonzobean_12, Biscute_10, BlackHoleSun_11, GantcherGoblin_8, KevinMinion_8, Kinny_11, Leathea_9, Lewando_12, Mardi_10, Muglass_12, Navi1117_9, Onestar_9, Phaila_9, PoeMe_10, Renaldo_14, Stardrop_9, Tenney120_9, TrixiePhattel_9, Uzumaki_9, Zeina_9,

Summary by start number:

Start 4:

- Found in 7 of 45 (15.6%) of genes in pham
- Manual Annotations of this start: 1 of 33
- Called 14.3% of time when present
- Phage (with cluster) where this start called: Biscute_10 (AU6),

Start 6:

- Found in 14 of 45 (31.1%) of genes in pham
- Manual Annotations of this start: 10 of 33
- Called 100.0% of time when present
- Phage (with cluster) where this start called: Altjira_8 (AU6), Argan_8 (AU6), BlackHoleSun_11 (AU6), GantcherGoblin_8 (AU6), KevinMinion_8 (AU6), Leathea_9 (AU6), Mardi_10 (AU6), Navi1117_9 (AU6), Phaila_9 (AU6), PoeMe_10 (AU6), Stardrop_9 (AU6), Tenney120_9 (AU6), Uzumaki_9 (AU6), Zeina_9 (AU6),

Start 7:

- Found in 9 of 45 (20.0%) of genes in pham
- Manual Annotations of this start: 3 of 33
- Called 88.9% of time when present
- Phage (with cluster) where this start called: BarbieDoll_13 (AU6), Barbonzobean_12 (AU6), Kinny_11 (AU6), Lewando_12 (AU6), Muglass_12 (AU6), Onestar_9 (AW), Renaldo_14 (AU6), TrixiePhattel_9 (AU6),

Start 8:

- Found in 22 of 45 (48.9%) of genes in pham
- Manual Annotations of this start: 19 of 33
- Called 100.0% of time when present
- Phage (with cluster) where this start called: Boog_10 (AW), BronxBay_10 (AW), Djungelskog_10 (AW), DoctorPepper_10 (AW), Egad_10 (AW), HerbBucket_9 (AW), Jeremy4pt0_10 (AW), Linda_10 (AW), Michelle_10 (AW), MrAaronian_10 (AW), Natasha_11 (AW), Powellldog_11 (AW), ProfFrink_10 (AW), Raunak_10 (AW), RustyBoy_11 (AW), Salk_10 (AW), Shiba_10 (AW), Sloopyjoe_10 (AW), Spain_9 (AW), Sporto_11 (AW), StarLord_10 (AW), Stayer_10 (AW),

Summary by clusters:

There are 2 clusters represented in this pham: AW, AU6,

Info for manual annotations of cluster AU6:

- Start number 4 was manually annotated 1 time for cluster AU6.
- Start number 6 was manually annotated 10 times for cluster AU6.
- Start number 7 was manually annotated 3 times for cluster AU6.

Info for manual annotations of cluster AW:

- Start number 8 was manually annotated 19 times for cluster AW.

Gene Information:

Gene: Altjira_8 Start: 5336, Stop: 5992, Start Num: 6

Candidate Starts for Altjira_8:

(Start: 6 @5336 has 10 MA's), (10, 5384), (20, 5663), (22, 5669), (25, 5738), (31, 5825), (37, 5957),

Gene: Argan_8 Start: 5153, Stop: 5809, Start Num: 6

Candidate Starts for Argan_8:

(Start: 6 @5153 has 10 MA's), (10, 5201), (20, 5480), (22, 5486), (23, 5534), (31, 5642), (37, 5774),

Gene: BarbieDoll_13 Start: 7104, Stop: 7760, Start Num: 7

Candidate Starts for BarbieDoll_13:

(2, 7044), (3, 7056), (Start: 4 @7065 has 1 MA's), (Start: 7 @7104 has 3 MA's), (10, 7152), (20, 7431), (29, 7557), (37, 7725),

Gene: Barbonzobean_12 Start: 6800, Stop: 7456, Start Num: 7

Candidate Starts for Barbonzobean_12:

(2, 6740), (3, 6752), (Start: 4 @6761 has 1 MA's), (Start: 7 @6800 has 3 MA's), (10, 6848), (20, 7127), (29, 7253), (37, 7421),

Gene: Biscute_10 Start: 6761, Stop: 7456, Start Num: 4

Candidate Starts for Biscute_10:

(2, 6740), (3, 6752), (Start: 4 @6761 has 1 MA's), (Start: 7 @6800 has 3 MA's), (10, 6848), (20, 7127), (37, 7421),

Gene: BlackHoleSun_11 Start: 5520, Stop: 6176, Start Num: 6

Candidate Starts for BlackHoleSun_11:

(Start: 6 @5520 has 10 MA's), (10, 5568), (12, 5661), (20, 5847), (23, 5901), (31, 6009), (37, 6141),

Gene: Boog_10 Start: 5749, Stop: 6414, Start Num: 8

Candidate Starts for Boog_10:

(Start: 8 @5749 has 19 MA's), (10, 5797), (17, 6049), (27, 6178), (28, 6214), (35, 6289), (38, 6409),

Gene: BronxBay_10 Start: 5748, Stop: 6413, Start Num: 8

Candidate Starts for BronxBay_10:

(Start: 8 @5748 has 19 MA's), (10, 5796), (17, 6048), (27, 6177), (28, 6213), (35, 6288), (38, 6408),

Gene: Djungelskog_10 Start: 5748, Stop: 6413, Start Num: 8

Candidate Starts for Djungelskog_10:

(Start: 8 @5748 has 19 MA's), (10, 5796), (17, 6048), (27, 6177), (28, 6213), (35, 6288), (38, 6408),

Gene: DoctorPepper_10 Start: 5748, Stop: 6413, Start Num: 8

Candidate Starts for DoctorPepper_10:

(Start: 8 @5748 has 19 MA's), (10, 5796), (17, 6048), (27, 6177), (28, 6213), (35, 6288), (38, 6408),

Gene: Egad_10 Start: 5749, Stop: 6414, Start Num: 8

Candidate Starts for Egad_10:

(Start: 8 @5749 has 19 MA's), (10, 5797), (17, 6049), (27, 6178), (28, 6214), (35, 6289), (38, 6409),

Gene: GantcherGoblin_8 Start: 5153, Stop: 5809, Start Num: 6

Candidate Starts for GantcherGoblin_8:

(Start: 6 @5153 has 10 MA's), (10, 5201), (20, 5480), (31, 5642), (37, 5774),

Gene: HerbBucket_9 Start: 5749, Stop: 6414, Start Num: 8

Candidate Starts for HerbBucket_9:

(Start: 8 @5749 has 19 MA's), (10, 5797), (17, 6049), (27, 6178), (28, 6214), (35, 6289), (38, 6409),

Gene: Jeremy4pt0_10 Start: 5748, Stop: 6413, Start Num: 8

Candidate Starts for Jeremy4pt0_10:

(Start: 8 @5748 has 19 MA's), (10, 5796), (17, 6048), (27, 6177), (28, 6213), (35, 6288), (38, 6408),

Gene: KevinMinion_8 Start: 5309, Stop: 5965, Start Num: 6

Candidate Starts for KevinMinion_8:

(Start: 6 @5309 has 10 MA's), (10, 5357), (20, 5636), (22, 5642), (23, 5690), (31, 5798), (37, 5930),

Gene: Kinny_11 Start: 7104, Stop: 7760, Start Num: 7

Candidate Starts for Kinny_11:

(2, 7044), (3, 7056), (Start: 4 @7065 has 1 MA's), (Start: 7 @7104 has 3 MA's), (10, 7152), (20, 7431), (29, 7557), (37, 7725),

Gene: Leathea_9 Start: 5347, Stop: 6003, Start Num: 6

Candidate Starts for Leathea_9:

(Start: 6 @5347 has 10 MA's), (10, 5395), (12, 5488), (18, 5647), (24, 5740), (25, 5749),

Gene: Lewando_12 Start: 7103, Stop: 7759, Start Num: 7

Candidate Starts for Lewando_12:

(2, 7043), (3, 7055), (Start: 4 @7064 has 1 MA's), (Start: 7 @7103 has 3 MA's), (10, 7151), (20, 7430), (37, 7724),

Gene: Linda_10 Start: 5748, Stop: 6413, Start Num: 8

Candidate Starts for Linda_10:

(Start: 8 @5748 has 19 MA's), (10, 5796), (17, 6048), (27, 6177), (28, 6213), (35, 6288), (38, 6408),

Gene: Mardi_10 Start: 5454, Stop: 6110, Start Num: 6

Candidate Starts for Mardi_10:

(Start: 6 @5454 has 10 MA's), (10, 5502), (20, 5781), (22, 5787), (31, 5943), (37, 6075),

Gene: Michelle_10 Start: 5748, Stop: 6413, Start Num: 8

Candidate Starts for Michelle_10:

(Start: 8 @5748 has 19 MA's), (10, 5796), (17, 6048), (27, 6177), (28, 6213), (35, 6288), (38, 6408),

Gene: MrAaronian_10 Start: 5748, Stop: 6413, Start Num: 8

Candidate Starts for MrAaronian_10:

(Start: 8 @5748 has 19 MA's), (10, 5796), (17, 6048), (27, 6177), (28, 6213), (35, 6288), (38, 6408),

Gene: Muglass_12 Start: 6800, Stop: 7456, Start Num: 7

Candidate Starts for Muglass_12:

(2, 6740), (3, 6752), (Start: 4 @6761 has 1 MA's), (Start: 7 @6800 has 3 MA's), (10, 6848), (20, 7127), (37, 7421),

Gene: Natasha_11 Start: 6884, Stop: 7528, Start Num: 8

Candidate Starts for Natasha_11:

(Start: 8 @6884 has 19 MA's), (10, 6932), (19, 7205), (21, 7229), (27, 7313), (30, 7373), (33, 7394), (34, 7400), (38, 7523),

Gene: Navi1117_9 Start: 5548, Stop: 6204, Start Num: 6

Candidate Starts for Navi1117_9:

(Start: 6 @5548 has 10 MA's), (10, 5596), (20, 5875), (22, 5881), (23, 5929), (31, 6037), (37, 6169),

Gene: Onestar_9 Start: 5770, Stop: 6435, Start Num: 7

Candidate Starts for Onestar_9:

(Start: 7 @5770 has 3 MA's), (10, 5818), (11, 5893), (14, 6046), (15, 6058), (16, 6073), (30, 6274), (32, 6292), (38, 6430),

Gene: Phaila_9 Start: 5422, Stop: 6078, Start Num: 6

Candidate Starts for Phaila_9:

(Start: 6 @5422 has 10 MA's), (10, 5470), (20, 5749), (23, 5803), (31, 5911), (37, 6043),

Gene: PoeMe_10 Start: 5456, Stop: 6112, Start Num: 6

Candidate Starts for PoeMe_10:

(Start: 6 @5456 has 10 MA's), (10, 5504), (20, 5783), (22, 5789), (23, 5837), (31, 5945), (37, 6077),

Gene: Powelldog_11 Start: 6790, Stop: 7431, Start Num: 8

Candidate Starts for Powelldog_11:

(1, 6724), (2, 6727), (3, 6739), (Start: 8 @6790 has 19 MA's), (9, 6826), (10, 6835), (15, 7063), (26, 7207), (30, 7276), (33, 7297), (34, 7303), (36, 7342), (38, 7426),

Gene: ProfFrink_10 Start: 5748, Stop: 6413, Start Num: 8

Candidate Starts for ProfFrink_10:

(Start: 8 @5748 has 19 MA's), (10, 5796), (17, 6048), (27, 6177), (28, 6213), (35, 6288), (38, 6408),

Gene: Raunak_10 Start: 5748, Stop: 6413, Start Num: 8

Candidate Starts for Raunak_10:

(Start: 8 @5748 has 19 MA's), (10, 5796), (17, 6048), (27, 6177), (28, 6213), (35, 6288), (38, 6408),

Gene: Renaldo_14 Start: 7104, Stop: 7760, Start Num: 7

Candidate Starts for Renaldo_14:

(2, 7044), (3, 7056), (Start: 4 @7065 has 1 MA's), (Start: 7 @7104 has 3 MA's), (10, 7152), (20, 7431), (37, 7725),

Gene: RustyBoy_11 Start: 6884, Stop: 7528, Start Num: 8

Candidate Starts for RustyBoy_11:

(Start: 8 @6884 has 19 MA's), (10, 6932), (19, 7205), (21, 7229), (27, 7313), (30, 7373), (33, 7394), (34, 7400), (38, 7523),

Gene: Salk_10 Start: 5748, Stop: 6413, Start Num: 8

Candidate Starts for Salk_10:

(Start: 8 @5748 has 19 MA's), (10, 5796), (17, 6048), (27, 6177), (28, 6213), (35, 6288), (38, 6408),

Gene: Shiba_10 Start: 5748, Stop: 6413, Start Num: 8

Candidate Starts for Shiba_10:

(Start: 8 @5748 has 19 MA's), (10, 5796), (17, 6048), (27, 6177), (28, 6213), (35, 6288), (38, 6408),

Gene: Sloopyjoe_10 Start: 5749, Stop: 6414, Start Num: 8

Candidate Starts for Sloopyjoe_10:

(Start: 8 @5749 has 19 MA's), (10, 5797), (17, 6049), (27, 6178), (28, 6214), (35, 6289), (38, 6409),

Gene: Spain_9 Start: 5748, Stop: 6413, Start Num: 8

Candidate Starts for Spain_9:

(Start: 8 @5748 has 19 MA's), (10, 5796), (17, 6048), (27, 6177), (28, 6213), (35, 6288), (38, 6408),

Gene: Sporto_11 Start: 7001, Stop: 7642, Start Num: 8

Candidate Starts for Sporto_11:

(Start: 8 @7001 has 19 MA's), (10, 7046), (13, 7253), (19, 7319), (27, 7427), (30, 7487), (33, 7508), (34, 7514), (38, 7637),

Gene: StarLord_10 Start: 5749, Stop: 6414, Start Num: 8

Candidate Starts for StarLord_10:

(Start: 8 @5749 has 19 MA's), (10, 5797), (17, 6049), (27, 6178), (28, 6214), (35, 6289), (38, 6409),

Gene: Stardrop_9 Start: 5459, Stop: 6115, Start Num: 6

Candidate Starts for Stardrop_9:

(Start: 6 @5459 has 10 MA's), (10, 5507), (20, 5786), (22, 5792), (23, 5840), (31, 5948), (37, 6080),

Gene: Stayer_10 Start: 5748, Stop: 6413, Start Num: 8

Candidate Starts for Stayer_10:

(Start: 8 @5748 has 19 MA's), (10, 5796), (17, 6048), (27, 6177), (28, 6213), (35, 6288), (38, 6408),

Gene: Tenney120_9 Start: 5436, Stop: 6092, Start Num: 6

Candidate Starts for Tenney120_9:

(Start: 6 @5436 has 10 MA's), (10, 5484), (20, 5763), (31, 5925), (37, 6057),

Gene: TrixiePhattel_9 Start: 5391, Stop: 6053, Start Num: 7

Candidate Starts for TrixiePhattel_9:

(5, 5385), (Start: 7 @5391 has 3 MA's), (10, 5445), (18, 5697), (37, 6018),

Gene: Uzumaki_9 Start: 5436, Stop: 6092, Start Num: 6

Candidate Starts for Uzumaki_9:

(Start: 6 @5436 has 10 MA's), (10, 5484), (20, 5763), (31, 5925), (37, 6057),

Gene: Zeina_9 Start: 5446, Stop: 6102, Start Num: 6

Candidate Starts for Zeina_9:

(Start: 6 @5446 has 10 MA's), (10, 5494), (20, 5773), (22, 5779), (23, 5827), (31, 5935), (37, 6067),