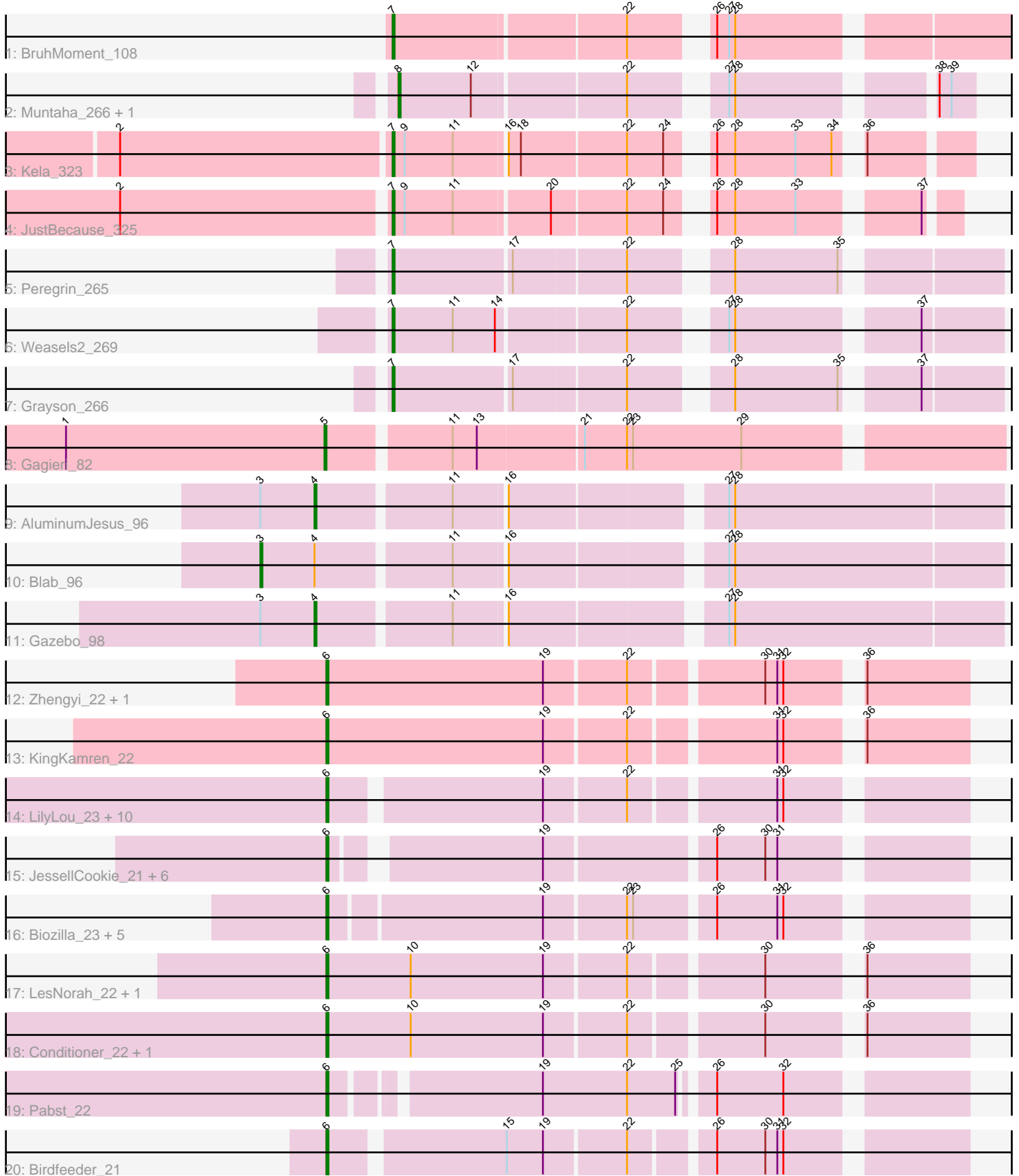


Pham 308811



Note: Tracks are now grouped by subcluster and scaled. Switching in subcluster is indicated by changes in track color. Track scale is now set by default to display the region 30 bp upstream of start 1 to 30 bp downstream of the last possible start. If this default region is judged to be packed too tightly with annotated starts, the track will be further scaled to only show that region of the ORF with annotated starts. This action will be indicated by adding "Zoomed" to the title. For starts, yellow indicates the location of called starts comprised solely of Glimmer/GeneMark auto-annotations, green indicates the location of called starts with at least 1 manual gene annotation.

Pham 308811 Report

This analysis was run 06/27/26 on database version 652.

Pham number 308811 has 45 members, 5 are drafts.

Phages represented in each track:

- Track 1 : BruhMoment_108
- Track 2 : Muntaha_266, Muntaha_3
- Track 3 : Kela_323
- Track 4 : JustBecause_325
- Track 5 : Peregrin_265
- Track 6 : Weasels2_269
- Track 7 : Grayson_266
- Track 8 : Gagieri_82
- Track 9 : AluminumJesus_96
- Track 10 : Blab_96
- Track 11 : Gazebo_98
- Track 12 : Zhengyi_22, EugeneKrabs_22
- Track 13 : KingKamren_22
- Track 14 : LilyLou_23, DumpQuist_22, ArMaWen_22, Alex44_23, Dashyla_22, Corn21_22, Unphazed_23, Xitlalli_22, Phogo_23, SwissCheezer_22, Stormbreaker_22
- Track 15 : JessellCookie_21, Wesak_21, Sorvannah_21, YellowPanda_22, Salvatore2000_21, MiamiPanther_21, TinyTimothy_21
- Track 16 : Biozilla_23, TicTac_23, HitchHiker_24, CrunchyBoi_24, PineapplePluto_24, Oatly_22
- Track 17 : LesNorah_22, BlueRugrat_22
- Track 18 : Conditioner_22, TownLake_22
- Track 19 : Pabst_22
- Track 20 : Birdfeeder_21

Summary of Final Annotations (See graph section above for start numbers):

The start number called the most often in the published annotations is 6, it was called in 28 of the 40 non-draft genes in the pham.

Genes that call this "Most Annotated" start:

- Alex44_23, ArMaWen_22, Biozilla_23, Birdfeeder_21, BlueRugrat_22, Conditioner_22, Corn21_22, CrunchyBoi_24, Dashyla_22, DumpQuist_22, EugeneKrabs_22, HitchHiker_24, JessellCookie_21, KingKamren_22, LesNorah_22,

LilyLou_23, MiamiPanther_21, Oatly_22, Pabst_22, Phogo_23, PineapplePluto_24, Salvatore2000_21, Sorvannah_21, Stormbreaker_22, SwissCheezer_22, TicTac_23, TinyTimothy_21, TownLake_22, Unphazed_23, Wesak_21, Xitlalli_22, YellowPanda_22, Zhengyi_22,

Genes that have the "Most Annotated" start but do not call it:

-

Genes that do not have the "Most Annotated" start:

- AluminumJesus_96, Blab_96, BruhMoment_108, Gagieri_82, Gazebo_98, Grayson_266, JustBecause_325, Kela_323, Muntaha_266, Muntaha_3, Peregrin_265, Weasels2_269,

Summary by start number:

Start 3:

- Found in 3 of 45 (6.7%) of genes in pham
- Manual Annotations of this start: 1 of 40
- Called 33.3% of time when present
- Phage (with cluster) where this start called: Blab_96 (EG),

Start 4:

- Found in 3 of 45 (6.7%) of genes in pham
- Manual Annotations of this start: 2 of 40
- Called 66.7% of time when present
- Phage (with cluster) where this start called: AluminumJesus_96 (EG), Gazebo_98 (EG),

Start 5:

- Found in 1 of 45 (2.2%) of genes in pham
- Manual Annotations of this start: 1 of 40
- Called 100.0% of time when present
- Phage (with cluster) where this start called: Gagieri_82 (CR6),

Start 6:

- Found in 33 of 45 (73.3%) of genes in pham
- Manual Annotations of this start: 28 of 40
- Called 100.0% of time when present
- Phage (with cluster) where this start called: Alex44_23 (EK1), ArMaWen_22 (EK1), Biozilla_23 (EK1), Birdfeeder_21 (EK1), BlueRugrat_22 (EK1), Conditioner_22 (EK1), Corn21_22 (EK1), CrunchyBoi_24 (EK1), Dashyla_22 (EK1), DumpQuist_22 (EK1), EugeneKrabs_22 (EK), HitchHiker_24 (EK1), JessellCookie_21 (EK1), KingKamren_22 (EK), LesNorah_22 (EK1), LilyLou_23 (EK1), MiamiPanther_21 (EK1), Oatly_22 (EK1), Pabst_22 (EK1), Phogo_23 (EK1), PineapplePluto_24 (EK1), Salvatore2000_21 (EK1), Sorvannah_21 (EK1), Stormbreaker_22 (EK1), SwissCheezer_22 (EK1), TicTac_23 (EK1), TinyTimothy_21 (EK1), TownLake_22 (EK1), Unphazed_23 (EK1), Wesak_21 (EK1), Xitlalli_22 (EK1), YellowPanda_22 (EK1), Zhengyi_22 (EK),

Start 7:

- Found in 6 of 45 (13.3%) of genes in pham
- Manual Annotations of this start: 6 of 40
- Called 100.0% of time when present

- Phage (with cluster) where this start called: BruhMoment_108 (AP3), Grayson_266 (CB), JustBecause_325 (BM), Kela_323 (BM), Peregrin_265 (CB), Weasels2_269 (CB),

Start 8:

- Found in 2 of 45 (4.4%) of genes in pham
- Manual Annotations of this start: 2 of 40
- Called 100.0% of time when present
- Phage (with cluster) where this start called: Muntaha_266 (BK2), Muntaha_3 (BK2),

Summary by clusters:

There are 8 clusters represented in this pham: CR6, EK, CB, AP3, EG, BK2, BM, EK1,

Info for manual annotations of cluster AP3:

- Start number 7 was manually annotated 1 time for cluster AP3.

Info for manual annotations of cluster BK2:

- Start number 8 was manually annotated 2 times for cluster BK2.

Info for manual annotations of cluster BM:

- Start number 7 was manually annotated 2 times for cluster BM.

Info for manual annotations of cluster CB:

- Start number 7 was manually annotated 3 times for cluster CB.

Info for manual annotations of cluster CR6:

- Start number 5 was manually annotated 1 time for cluster CR6.

Info for manual annotations of cluster EG:

- Start number 3 was manually annotated 1 time for cluster EG.
- Start number 4 was manually annotated 2 times for cluster EG.

Info for manual annotations of cluster EK:

- Start number 6 was manually annotated 3 times for cluster EK.

Info for manual annotations of cluster EK1:

- Start number 6 was manually annotated 25 times for cluster EK1.

Gene Information:

Gene: Alex44_23 Start: 14012, Stop: 13725, Start Num: 6

Candidate Starts for Alex44_23:

(Start: 6 @14012 has 28 MA's), (19, 13913), (22, 13874), (31, 13808), (32, 13805),

Gene: AluminumJesus_96 Start: 58672, Stop: 58355, Start Num: 4

Candidate Starts for AluminumJesus_96:

(Start: 3 @58699 has 1 MA's), (Start: 4 @58672 has 2 MA's), (11, 58609), (16, 58585), (27, 58489), (28, 58486),

Gene: ArMaWen_22 Start: 13599, Stop: 13312, Start Num: 6
Candidate Starts for ArMaWen_22:
(Start: 6 @13599 has 28 MA's), (19, 13500), (22, 13461), (31, 13395), (32, 13392),

Gene: Biozilla_23 Start: 14093, Stop: 13800, Start Num: 6
Candidate Starts for Biozilla_23:
(Start: 6 @14093 has 28 MA's), (19, 13991), (22, 13952), (23, 13949), (26, 13913), (31, 13883), (32, 13880),

Gene: Birdfeeder_21 Start: 13747, Stop: 13460, Start Num: 6
Candidate Starts for Birdfeeder_21:
(Start: 6 @13747 has 28 MA's), (15, 13666), (19, 13648), (22, 13609), (26, 13573), (30, 13549), (31, 13543), (32, 13540),

Gene: Blab_96 Start: 59272, Stop: 58928, Start Num: 3
Candidate Starts for Blab_96:
(Start: 3 @59272 has 1 MA's), (Start: 4 @59245 has 2 MA's), (11, 59182), (16, 59158), (27, 59062), (28, 59059),

Gene: BlueRugrat_22 Start: 14033, Stop: 13737, Start Num: 6
Candidate Starts for BlueRugrat_22:
(Start: 6 @14033 has 28 MA's), (10, 13991), (19, 13925), (22, 13886), (30, 13826), (36, 13787),

Gene: BruhMoment_108 Start: 64356, Stop: 64054, Start Num: 7
Candidate Starts for BruhMoment_108:
(Start: 7 @64356 has 6 MA's), (22, 64245), (26, 64215), (27, 64209), (28, 64206),

Gene: Conditioner_22 Start: 14104, Stop: 13808, Start Num: 6
Candidate Starts for Conditioner_22:
(Start: 6 @14104 has 28 MA's), (10, 14062), (19, 13996), (22, 13957), (30, 13897), (36, 13858),

Gene: Corn21_22 Start: 14135, Stop: 13848, Start Num: 6
Candidate Starts for Corn21_22:
(Start: 6 @14135 has 28 MA's), (19, 14036), (22, 13997), (31, 13931), (32, 13928),

Gene: CrunchyBoi_24 Start: 13940, Stop: 13647, Start Num: 6
Candidate Starts for CrunchyBoi_24:
(Start: 6 @13940 has 28 MA's), (19, 13838), (22, 13799), (23, 13796), (26, 13760), (31, 13730), (32, 13727),

Gene: Dashyla_22 Start: 13612, Stop: 13325, Start Num: 6
Candidate Starts for Dashyla_22:
(Start: 6 @13612 has 28 MA's), (19, 13513), (22, 13474), (31, 13408), (32, 13405),

Gene: DumpQuist_22 Start: 13587, Stop: 13300, Start Num: 6
Candidate Starts for DumpQuist_22:
(Start: 6 @13587 has 28 MA's), (19, 13488), (22, 13449), (31, 13383), (32, 13380),

Gene: EugeneKrabs_22 Start: 14590, Stop: 14294, Start Num: 6
Candidate Starts for EugeneKrabs_22:
(Start: 6 @14590 has 28 MA's), (19, 14482), (22, 14443), (30, 14383), (31, 14377), (32, 14374), (36, 14344),

Gene: Gagieri_82 Start: 59252, Stop: 59569, Start Num: 5

Candidate Starts for Gagieri_82:

(1, 59123), (Start: 5 @59252 has 1 MA's), (11, 59309), (13, 59321), (21, 59372), (22, 59393), (23, 59396), (29, 59450),

Gene: Gazebo_98 Start: 59250, Stop: 58933, Start Num: 4

Candidate Starts for Gazebo_98:

(Start: 3 @59277 has 1 MA's), (Start: 4 @59250 has 2 MA's), (11, 59187), (16, 59163), (27, 59067), (28, 59064),

Gene: Grayson_266 Start: 122812, Stop: 122543, Start Num: 7

Candidate Starts for Grayson_266:

(Start: 7 @122812 has 6 MA's), (17, 122755), (22, 122701), (28, 122662), (35, 122611), (37, 122581),

Gene: HitchHiker_24 Start: 14093, Stop: 13800, Start Num: 6

Candidate Starts for HitchHiker_24:

(Start: 6 @14093 has 28 MA's), (19, 13991), (22, 13952), (23, 13949), (26, 13913), (31, 13883), (32, 13880),

Gene: JessellCookie_21 Start: 13511, Stop: 13227, Start Num: 6

Candidate Starts for JessellCookie_21:

(Start: 6 @13511 has 28 MA's), (19, 13418), (26, 13340), (30, 13316), (31, 13310),

Gene: JustBecause_325 Start: 173184, Stop: 172939, Start Num: 7

Candidate Starts for JustBecause_325:

(2, 173313), (Start: 7 @173184 has 6 MA's), (9, 173178), (11, 173154), (20, 173109), (22, 173073), (24, 173055), (26, 173043), (28, 173034), (33, 173004), (37, 172953),

Gene: Kela_323 Start: 174086, Stop: 173835, Start Num: 7

Candidate Starts for Kela_323:

(2, 174218), (Start: 7 @174086 has 6 MA's), (9, 174080), (11, 174056), (16, 174032), (18, 174026), (22, 173975), (24, 173957), (26, 173945), (28, 173936), (33, 173906), (34, 173888), (36, 173882),

Gene: KingKamren_22 Start: 14551, Stop: 14255, Start Num: 6

Candidate Starts for KingKamren_22:

(Start: 6 @14551 has 28 MA's), (19, 14443), (22, 14404), (31, 14338), (32, 14335), (36, 14305),

Gene: LesNorah_22 Start: 14126, Stop: 13830, Start Num: 6

Candidate Starts for LesNorah_22:

(Start: 6 @14126 has 28 MA's), (10, 14084), (19, 14018), (22, 13979), (30, 13919), (36, 13880),

Gene: LilyLou_23 Start: 13976, Stop: 13689, Start Num: 6

Candidate Starts for LilyLou_23:

(Start: 6 @13976 has 28 MA's), (19, 13877), (22, 13838), (31, 13772), (32, 13769),

Gene: MiamiPanther_21 Start: 13511, Stop: 13227, Start Num: 6

Candidate Starts for MiamiPanther_21:

(Start: 6 @13511 has 28 MA's), (19, 13418), (26, 13340), (30, 13316), (31, 13310),

Gene: Muntaha_266 Start: 126731, Stop: 126979, Start Num: 8

Candidate Starts for Muntaha_266:

(Start: 8 @126731 has 2 MA's), (12, 126767), (22, 126839), (27, 126875), (28, 126878), (38, 126962), (39, 126968),

Gene: Muntaha_3 Start: 1054, Stop: 1302, Start Num: 8
Candidate Starts for Muntaha_3:
(Start: 8 @1054 has 2 MA's), (12, 1090), (22, 1162), (27, 1198), (28, 1201), (38, 1285), (39, 1291),

Gene: Oatly_22 Start: 13507, Stop: 13214, Start Num: 6
Candidate Starts for Oatly_22:
(Start: 6 @13507 has 28 MA's), (19, 13405), (22, 13366), (23, 13363), (26, 13327), (31, 13297), (32, 13294),

Gene: Pabst_22 Start: 13631, Stop: 13347, Start Num: 6
Candidate Starts for Pabst_22:
(Start: 6 @13631 has 28 MA's), (19, 13538), (22, 13496), (25, 13472), (26, 13460), (32, 13427),

Gene: Peregrin_265 Start: 124384, Stop: 124115, Start Num: 7
Candidate Starts for Peregrin_265:
(Start: 7 @124384 has 6 MA's), (17, 124327), (22, 124273), (28, 124234), (35, 124183),

Gene: Phogo_23 Start: 13802, Stop: 13515, Start Num: 6
Candidate Starts for Phogo_23:
(Start: 6 @13802 has 28 MA's), (19, 13703), (22, 13664), (31, 13598), (32, 13595),

Gene: PineapplePluto_24 Start: 13949, Stop: 13656, Start Num: 6
Candidate Starts for PineapplePluto_24:
(Start: 6 @13949 has 28 MA's), (19, 13847), (22, 13808), (23, 13805), (26, 13769), (31, 13739), (32, 13736),

Gene: Salvatore2000_21 Start: 13511, Stop: 13227, Start Num: 6
Candidate Starts for Salvatore2000_21:
(Start: 6 @13511 has 28 MA's), (19, 13418), (26, 13340), (30, 13316), (31, 13310),

Gene: Sorvannah_21 Start: 13511, Stop: 13227, Start Num: 6
Candidate Starts for Sorvannah_21:
(Start: 6 @13511 has 28 MA's), (19, 13418), (26, 13340), (30, 13316), (31, 13310),

Gene: Stormbreaker_22 Start: 13923, Stop: 13636, Start Num: 6
Candidate Starts for Stormbreaker_22:
(Start: 6 @13923 has 28 MA's), (19, 13824), (22, 13785), (31, 13719), (32, 13716),

Gene: SwissCheezer_22 Start: 13569, Stop: 13282, Start Num: 6
Candidate Starts for SwissCheezer_22:
(Start: 6 @13569 has 28 MA's), (19, 13470), (22, 13431), (31, 13365), (32, 13362),

Gene: TicTac_23 Start: 14006, Stop: 13710, Start Num: 6
Candidate Starts for TicTac_23:
(Start: 6 @14006 has 28 MA's), (19, 13901), (22, 13862), (23, 13859), (26, 13823), (31, 13793), (32, 13790),

Gene: TinyTimothy_21 Start: 13511, Stop: 13227, Start Num: 6
Candidate Starts for TinyTimothy_21:
(Start: 6 @13511 has 28 MA's), (19, 13418), (26, 13340), (30, 13316), (31, 13310),

Gene: TownLake_22 Start: 14108, Stop: 13812, Start Num: 6

Candidate Starts for TownLake_22:

(Start: 6 @14108 has 28 MA's), (10, 14066), (19, 14000), (22, 13961), (30, 13901), (36, 13862),

Gene: Unphazed_23 Start: 13838, Stop: 13551, Start Num: 6

Candidate Starts for Unphazed_23:

(Start: 6 @13838 has 28 MA's), (19, 13739), (22, 13700), (31, 13634), (32, 13631),

Gene: Weasels2_269 Start: 125711, Stop: 125442, Start Num: 7

Candidate Starts for Weasels2_269:

(Start: 7 @125711 has 6 MA's), (11, 125681), (14, 125660), (22, 125600), (27, 125564), (28, 125561), (37, 125480),

Gene: Wesak_21 Start: 13353, Stop: 13069, Start Num: 6

Candidate Starts for Wesak_21:

(Start: 6 @13353 has 28 MA's), (19, 13260), (26, 13182), (30, 13158), (31, 13152),

Gene: Xitlalli_22 Start: 14178, Stop: 13891, Start Num: 6

Candidate Starts for Xitlalli_22:

(Start: 6 @14178 has 28 MA's), (19, 14079), (22, 14040), (31, 13974), (32, 13971),

Gene: YellowPanda_22 Start: 13234, Stop: 12950, Start Num: 6

Candidate Starts for YellowPanda_22:

(Start: 6 @13234 has 28 MA's), (19, 13141), (26, 13063), (30, 13039), (31, 13033),

Gene: Zhengyi_22 Start: 14609, Stop: 14313, Start Num: 6

Candidate Starts for Zhengyi_22:

(Start: 6 @14609 has 28 MA's), (19, 14501), (22, 14462), (30, 14402), (31, 14396), (32, 14393), (36, 14363),