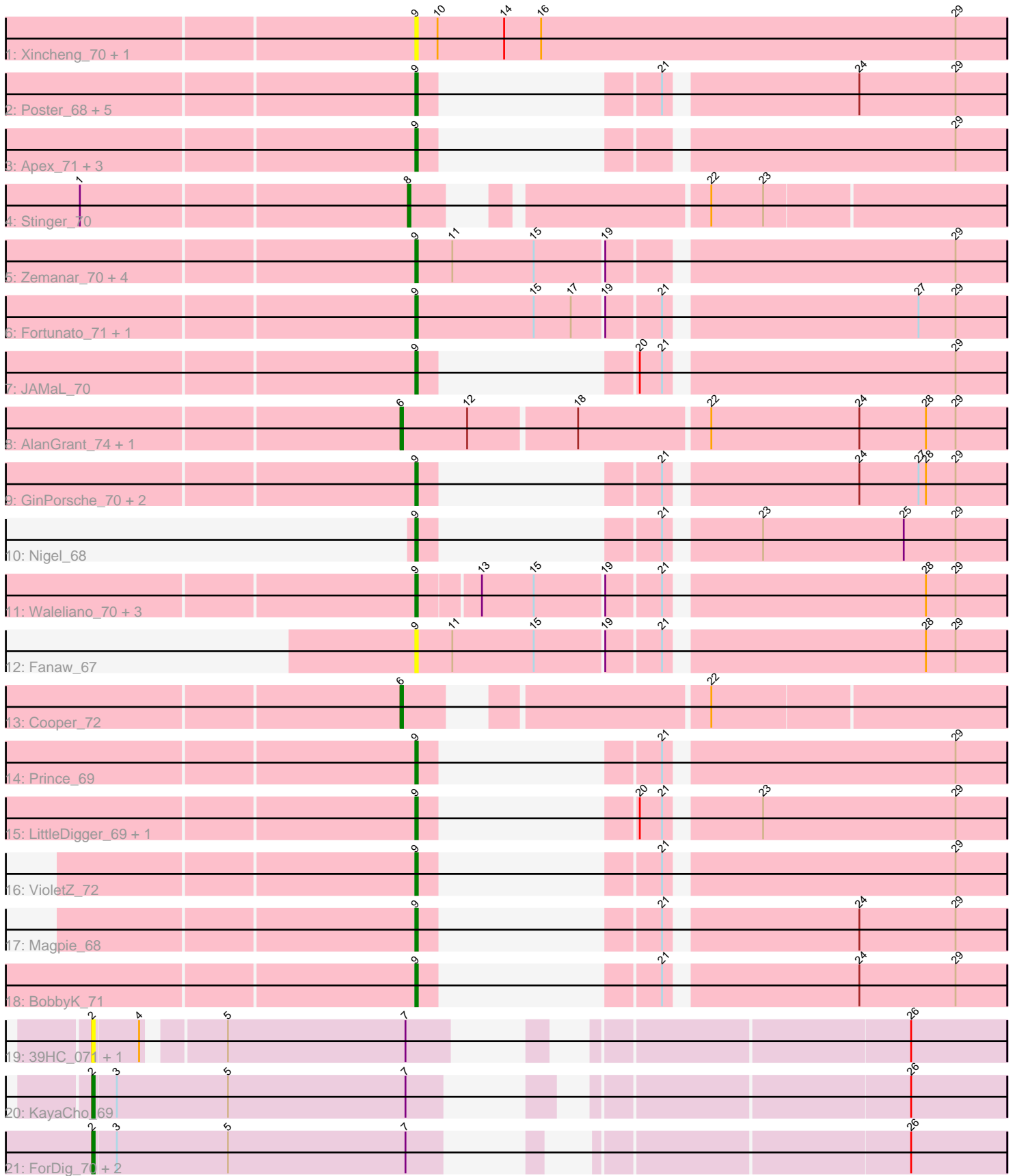


Pham 308818



Note: Tracks are now grouped by subcluster and scaled. Switching in subcluster is indicated by changes in track color. Track scale is now set by default to display the region 30 bp upstream of start 1 to 30 bp downstream of the last possible start. If this default region is judged to be packed too tightly with annotated starts, the track will be further scaled to only show that region of the ORF with annotated starts. This action will be indicated by adding "Zoomed" to the title. For starts, yellow indicates the location of called starts comprised solely of Glimmer/GeneMark auto-annotations, green indicates the location of called starts with at least 1 manual gene annotation.

Pham 308818 Report

This analysis was run 06/27/26 on database version 652.

Pham number 308818 has 45 members, 15 are drafts.

Phages represented in each track:

- Track 1 : Xincheng_70, JaguarMi_71
- Track 2 : Poster_68, ChrisnMich_70, Lambano_68, Nanao_69, Hally898_68, Ahwei_68
- Track 3 : Apex_71, JoyceMaria_70, Austelle_70, Mudslide_70
- Track 4 : Stinger_70
- Track 5 : Zemanar_70, Hangman_71, Heath_70, Frederick_72, Hydro_71
- Track 6 : Fortunato_71, RawrgerThat_71
- Track 7 : JAMaL_70
- Track 8 : AlanGrant_74, Vincenzo_73
- Track 9 : GinPorsche_70, Epah_68, Antihero_68
- Track 10 : Nigel_68
- Track 11 : Waleliano_70, Mithril_70, Lolalove_72, BrownCNA_72
- Track 12 : Fanaw_67
- Track 13 : Cooper_72
- Track 14 : Prince_69
- Track 15 : LittleDigger_69, Renkei_69
- Track 16 : VioletZ_72
- Track 17 : Magpie_68
- Track 18 : BobbyK_71
- Track 19 : 39HC_071, 40BC_071
- Track 20 : KayaCho_69
- Track 21 : ForDig_70, Jolie1_069, Hosp_067

Summary of Final Annotations (See graph section above for start numbers):

The start number called the most often in the published annotations is 9, it was called in 24 of the 30 non-draft genes in the pham.

Genes that call this "Most Annotated" start:

- Ahwei_68, Antihero_68, Apex_71, Austelle_70, BobbyK_71, BrownCNA_72, ChrisnMich_70, Epah_68, Fanaw_67, Fortunato_71, Frederick_72, GinPorsche_70, Hally898_68, Hangman_71, Heath_70, Hydro_71, JAMaL_70, JaguarMi_71, JoyceMaria_70, Lambano_68, LittleDigger_69, Lolalove_72, Magpie_68, Mithril_70, Mudslide_70, Nanao_69, Nigel_68, Poster_68, Prince_69, RawrgerThat_71,

Renkei_69, VioletZ_72, Waleliano_70, Xincheng_70, Zemanar_70,

Genes that have the "Most Annotated" start but do not call it:

-

Genes that do not have the "Most Annotated" start:

- 39HC_071, 40BC_071, AlanGrant_74, Cooper_72, ForDig_70, Hosp_067, Jolie1_069, KayaCho_69, Stinger_70, Vincenzo_73,

Summary by start number:

Start 2:

- Found in 6 of 45 (13.3%) of genes in pham
- Manual Annotations of this start: 2 of 30
- Called 100.0% of time when present
- Phage (with cluster) where this start called: 39HC_071 (B6), 40BC_071 (B6), ForDig_70 (B6), Hosp_067 (B6), Jolie1_069 (B6), KayaCho_69 (B6),

Start 6:

- Found in 3 of 45 (6.7%) of genes in pham
- Manual Annotations of this start: 3 of 30
- Called 100.0% of time when present
- Phage (with cluster) where this start called: AlanGrant_74 (B4), Cooper_72 (B4), Vincenzo_73 (B4),

Start 8:

- Found in 1 of 45 (2.2%) of genes in pham
- Manual Annotations of this start: 1 of 30
- Called 100.0% of time when present
- Phage (with cluster) where this start called: Stinger_70 (B4),

Start 9:

- Found in 35 of 45 (77.8%) of genes in pham
- Manual Annotations of this start: 24 of 30
- Called 100.0% of time when present
- Phage (with cluster) where this start called: Ahwei_68 (B4), Antihero_68 (B4), Apex_71 (B4), Austelle_70 (B4), BobbyK_71 (B4), BrownCNA_72 (B4), ChrisnMich_70 (B4), Epah_68 (B4), Fanaw_67 (B4), Fortunato_71 (B4), Frederick_72 (B4), GinPorsche_70 (B4), Hally898_68 (B4), Hangman_71 (B4), Heath_70 (B4), Hydro_71 (B4), JAMaL_70 (B4), JaguarMi_71 (B4), JoyceMaria_70 (B4), Lambano_68 (B4), LittleDigger_69 (B4), Lolalove_72 (B4), Magpie_68 (B4), Mithril_70 (B4), Mudslide_70 (B4), Nanao_69 (B4), Nigel_68 (B4), Poster_68 (B4), Prince_69 (B4), RawrgerThat_71 (B4), Renkei_69 (B4), VioletZ_72 (B4), Waleliano_70 (B4), Xincheng_70 (B4), Zemanar_70 (B4),

Summary by clusters:

There are 2 clusters represented in this pham: B4, B6,

Info for manual annotations of cluster B4:

- Start number 6 was manually annotated 3 times for cluster B4.
- Start number 8 was manually annotated 1 time for cluster B4.
- Start number 9 was manually annotated 24 times for cluster B4.

Info for manual annotations of cluster B6:

•Start number 2 was manually annotated 2 times for cluster B6.

Gene Information:

Gene: 39HC_071 Start: 59687, Stop: 59992, Start Num: 2

Candidate Starts for 39HC_071:

(Start: 2 @59687 has 2 MA's), (4, 59705), (5, 59732), (7, 59804), (26, 59954),

Gene: 40BC_071 Start: 59687, Stop: 59992, Start Num: 2

Candidate Starts for 40BC_071:

(Start: 2 @59687 has 2 MA's), (4, 59705), (5, 59732), (7, 59804), (26, 59954),

Gene: Ahwei_68 Start: 59878, Stop: 60039, Start Num: 9

Candidate Starts for Ahwei_68:

(Start: 9 @59878 has 24 MA's), (21, 59908), (24, 59980), (29, 60019),

Gene: AlanGrant_74 Start: 62174, Stop: 62413, Start Num: 6

Candidate Starts for AlanGrant_74:

(Start: 6 @62174 has 3 MA's), (12, 62201), (18, 62243), (22, 62294), (24, 62354), (28, 62381), (29, 62393),

Gene: Antihero_68 Start: 59876, Stop: 60037, Start Num: 9

Candidate Starts for Antihero_68:

(Start: 9 @59876 has 24 MA's), (21, 59906), (24, 59978), (27, 60002), (28, 60005), (29, 60017),

Gene: Apex_71 Start: 60981, Stop: 61142, Start Num: 9

Candidate Starts for Apex_71:

(Start: 9 @60981 has 24 MA's), (29, 61122),

Gene: Austelle_70 Start: 61498, Stop: 61659, Start Num: 9

Candidate Starts for Austelle_70:

(Start: 9 @61498 has 24 MA's), (29, 61639),

Gene: BobbyK_71 Start: 60758, Stop: 60919, Start Num: 9

Candidate Starts for BobbyK_71:

(Start: 9 @60758 has 24 MA's), (21, 60788), (24, 60860), (29, 60899),

Gene: BrownCNA_72 Start: 61132, Stop: 61356, Start Num: 9

Candidate Starts for BrownCNA_72:

(Start: 9 @61132 has 24 MA's), (13, 61156), (15, 61177), (19, 61204), (21, 61225), (28, 61324), (29, 61336),

Gene: ChrisnMich_70 Start: 59860, Stop: 60021, Start Num: 9

Candidate Starts for ChrisnMich_70:

(Start: 9 @59860 has 24 MA's), (21, 59890), (24, 59962), (29, 60001),

Gene: Cooper_72 Start: 60528, Stop: 60746, Start Num: 6

Candidate Starts for Cooper_72:

(Start: 6 @60528 has 3 MA's), (22, 60630),

Gene: Epah_68 Start: 59876, Stop: 60037, Start Num: 9
Candidate Starts for Epah_68:
(Start: 9 @59876 has 24 MA's), (21, 59906), (24, 59978), (27, 60002), (28, 60005), (29, 60017),

Gene: Fanaw_67 Start: 60911, Stop: 61138, Start Num: 9
Candidate Starts for Fanaw_67:
(Start: 9 @60911 has 24 MA's), (11, 60926), (15, 60959), (19, 60986), (21, 61007), (28, 61106), (29, 61118),

Gene: ForDig_70 Start: 59595, Stop: 59903, Start Num: 2
Candidate Starts for ForDig_70:
(Start: 2 @59595 has 2 MA's), (3, 59604), (5, 59649), (7, 59721), (26, 59865),

Gene: Fortunato_71 Start: 60910, Stop: 61137, Start Num: 9
Candidate Starts for Fortunato_71:
(Start: 9 @60910 has 24 MA's), (15, 60958), (17, 60973), (19, 60985), (21, 61006), (27, 61102), (29, 61117),

Gene: Frederick_72 Start: 60934, Stop: 61161, Start Num: 9
Candidate Starts for Frederick_72:
(Start: 9 @60934 has 24 MA's), (11, 60949), (15, 60982), (19, 61009), (29, 61141),

Gene: GinPorsche_70 Start: 59876, Stop: 60037, Start Num: 9
Candidate Starts for GinPorsche_70:
(Start: 9 @59876 has 24 MA's), (21, 59906), (24, 59978), (27, 60002), (28, 60005), (29, 60017),

Gene: Hally898_68 Start: 59891, Stop: 60052, Start Num: 9
Candidate Starts for Hally898_68:
(Start: 9 @59891 has 24 MA's), (21, 59921), (24, 59993), (29, 60032),

Gene: Hangman_71 Start: 61133, Stop: 61360, Start Num: 9
Candidate Starts for Hangman_71:
(Start: 9 @61133 has 24 MA's), (11, 61148), (15, 61181), (19, 61208), (29, 61340),

Gene: Heath_70 Start: 60760, Stop: 60987, Start Num: 9
Candidate Starts for Heath_70:
(Start: 9 @60760 has 24 MA's), (11, 60775), (15, 60808), (19, 60835), (29, 60967),

Gene: Hosp_067 Start: 57475, Stop: 57783, Start Num: 2
Candidate Starts for Hosp_067:
(Start: 2 @57475 has 2 MA's), (3, 57484), (5, 57529), (7, 57601), (26, 57745),

Gene: Hydro_71 Start: 61071, Stop: 61298, Start Num: 9
Candidate Starts for Hydro_71:
(Start: 9 @61071 has 24 MA's), (11, 61086), (15, 61119), (19, 61146), (29, 61278),

Gene: JAMaL_70 Start: 60885, Stop: 61046, Start Num: 9
Candidate Starts for JAMaL_70:
(Start: 9 @60885 has 24 MA's), (20, 60906), (21, 60915), (29, 61026),

Gene: JaguarMi_71 Start: 62147, Stop: 62386, Start Num: 9
Candidate Starts for JaguarMi_71:

(Start: 9 @62147 has 24 MA's), (10, 62156), (14, 62183), (16, 62198), (29, 62366),

Gene: Jolie1_069 Start: 59603, Stop: 59917, Start Num: 2

Candidate Starts for Jolie1_069:

(Start: 2 @59603 has 2 MA's), (3, 59612), (5, 59657), (7, 59729), (26, 59879),

Gene: JoyceMaria_70 Start: 61021, Stop: 61182, Start Num: 9

Candidate Starts for JoyceMaria_70:

(Start: 9 @61021 has 24 MA's), (29, 61162),

Gene: KayaCho_69 Start: 59595, Stop: 59909, Start Num: 2

Candidate Starts for KayaCho_69:

(Start: 2 @59595 has 2 MA's), (3, 59604), (5, 59649), (7, 59721), (26, 59871),

Gene: Lambano_68 Start: 59891, Stop: 60052, Start Num: 9

Candidate Starts for Lambano_68:

(Start: 9 @59891 has 24 MA's), (21, 59921), (24, 59993), (29, 60032),

Gene: LittleDigger_69 Start: 59816, Stop: 59977, Start Num: 9

Candidate Starts for LittleDigger_69:

(Start: 9 @59816 has 24 MA's), (20, 59837), (21, 59846), (23, 59879), (29, 59957),

Gene: Lolalove_72 Start: 61063, Stop: 61287, Start Num: 9

Candidate Starts for Lolalove_72:

(Start: 9 @61063 has 24 MA's), (13, 61087), (15, 61108), (19, 61135), (21, 61156), (28, 61255), (29, 61267),

Gene: Magpie_68 Start: 60750, Stop: 60911, Start Num: 9

Candidate Starts for Magpie_68:

(Start: 9 @60750 has 24 MA's), (21, 60780), (24, 60852), (29, 60891),

Gene: Mithril_70 Start: 61062, Stop: 61286, Start Num: 9

Candidate Starts for Mithril_70:

(Start: 9 @61062 has 24 MA's), (13, 61086), (15, 61107), (19, 61134), (21, 61155), (28, 61254), (29, 61266),

Gene: Mudslide_70 Start: 61083, Stop: 61244, Start Num: 9

Candidate Starts for Mudslide_70:

(Start: 9 @61083 has 24 MA's), (29, 61224),

Gene: Nanao_69 Start: 59881, Stop: 60042, Start Num: 9

Candidate Starts for Nanao_69:

(Start: 9 @59881 has 24 MA's), (21, 59911), (24, 59983), (29, 60022),

Gene: Nigel_68 Start: 59701, Stop: 59862, Start Num: 9

Candidate Starts for Nigel_68:

(Start: 9 @59701 has 24 MA's), (21, 59731), (23, 59764), (25, 59821), (29, 59842),

Gene: Poster_68 Start: 59882, Stop: 60043, Start Num: 9

Candidate Starts for Poster_68:

(Start: 9 @59882 has 24 MA's), (21, 59912), (24, 59984), (29, 60023),

Gene: Prince_69 Start: 60984, Stop: 61145, Start Num: 9

Candidate Starts for Prince_69:
(Start: 9 @60984 has 24 MA's), (21, 61014), (29, 61125),

Gene: RawrgerThat_71 Start: 60888, Stop: 61115, Start Num: 9
Candidate Starts for RawrgerThat_71:
(Start: 9 @60888 has 24 MA's), (15, 60936), (17, 60951), (19, 60963), (21, 60984), (27, 61080), (29, 61095),

Gene: Renkei_69 Start: 59810, Stop: 59971, Start Num: 9
Candidate Starts for Renkei_69:
(Start: 9 @59810 has 24 MA's), (20, 59831), (21, 59840), (23, 59873), (29, 59951),

Gene: Stinger_70 Start: 59828, Stop: 60040, Start Num: 8
Candidate Starts for Stinger_70:
(1, 59699), (Start: 8 @59828 has 1 MA's), (22, 59924), (23, 59945),

Gene: Vincenzo_73 Start: 62204, Stop: 62443, Start Num: 6
Candidate Starts for Vincenzo_73:
(Start: 6 @62204 has 3 MA's), (12, 62231), (18, 62273), (22, 62324), (24, 62384), (28, 62411), (29, 62423),

Gene: VioletZ_72 Start: 60978, Stop: 61139, Start Num: 9
Candidate Starts for VioletZ_72:
(Start: 9 @60978 has 24 MA's), (21, 61008), (29, 61119),

Gene: Waleliano_70 Start: 60885, Stop: 61109, Start Num: 9
Candidate Starts for Waleliano_70:
(Start: 9 @60885 has 24 MA's), (13, 60909), (15, 60930), (19, 60957), (21, 60978), (28, 61077), (29, 61089),

Gene: Xincheng_70 Start: 62098, Stop: 62337, Start Num: 9
Candidate Starts for Xincheng_70:
(Start: 9 @62098 has 24 MA's), (10, 62107), (14, 62134), (16, 62149), (29, 62317),

Gene: Zemanar_70 Start: 60862, Stop: 61089, Start Num: 9
Candidate Starts for Zemanar_70:
(Start: 9 @60862 has 24 MA's), (11, 60877), (15, 60910), (19, 60937), (29, 61069),