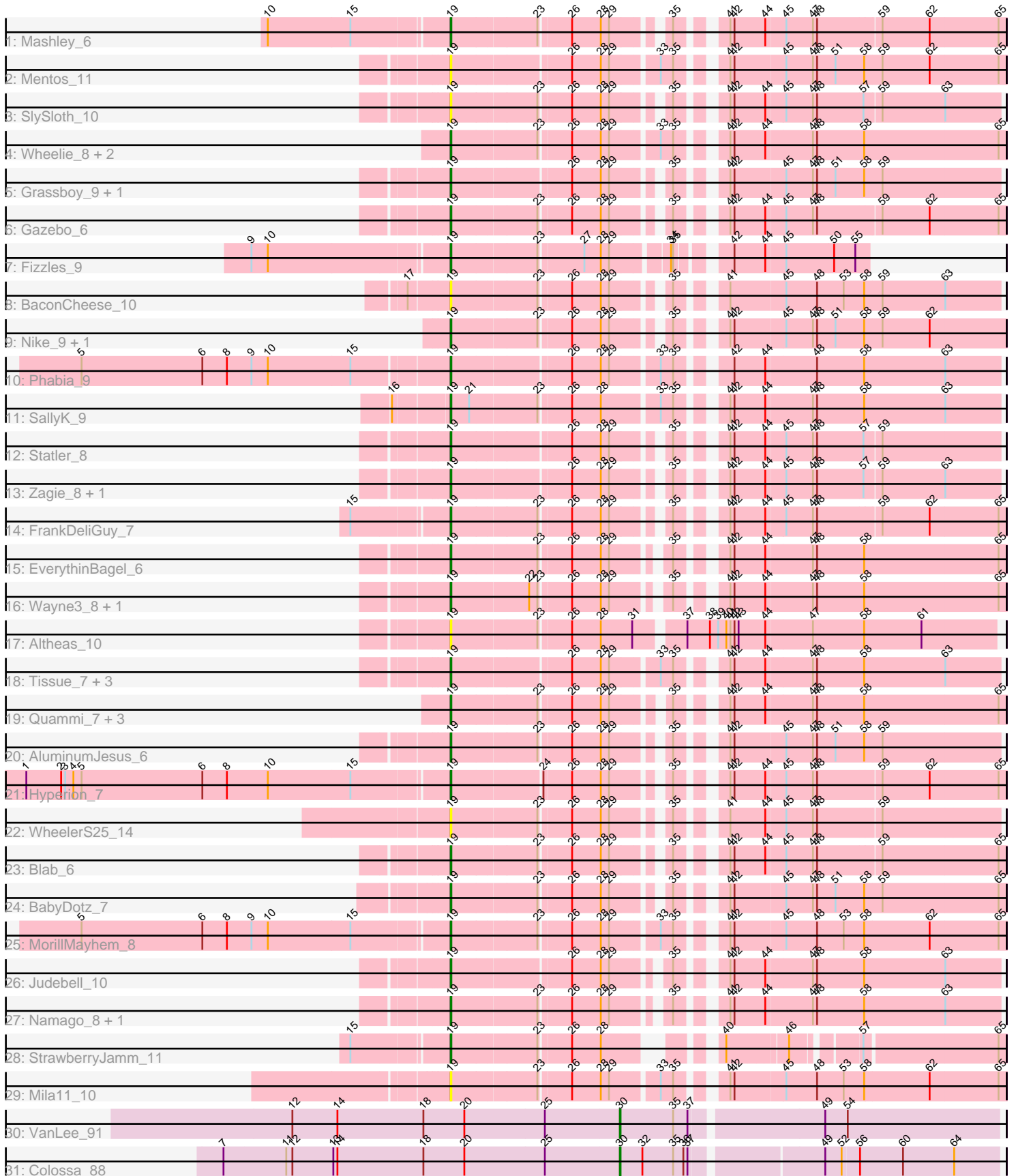


Pham 308824



Note: Tracks are now grouped by subcluster and scaled. Switching in subcluster is indicated by changes in track color. Track scale is now set by default to display the region 30 bp upstream of start 1 to 30 bp downstream of the last possible start. If this default region is judged to be packed too tightly with annotated starts, the track will be further scaled to only show that region of the ORF with annotated starts. This action will be indicated by adding "Zoomed" to the title. For starts, yellow indicates the location of called starts comprised solely of Glimmer/GeneMark auto-annotations, green indicates the location of called starts with at least 1 manual gene annotation.

Pham 308824 Report

This analysis was run 06/27/26 on database version 652.

Pham number 308824 has 44 members, 6 are drafts.

Phages represented in each track:

- Track 1 : Mashley_6
- Track 2 : Mentos_11
- Track 3 : SlySloth_10
- Track 4 : Wheelie_8, Llemily_8, DonaldDuck_8
- Track 5 : Grassboy_9, Kyva_10
- Track 6 : Gazebo_6
- Track 7 : Fizzles_9
- Track 8 : BaconCheese_10
- Track 9 : Nike_9, Squash_10
- Track 10 : Phabia_9
- Track 11 : SallyK_9
- Track 12 : Statler_8
- Track 13 : Zagie_8, Rowlf_4
- Track 14 : FrankDeliGuy_7
- Track 15 : EverythinBagel_6
- Track 16 : Wayne3_8, Casend_8
- Track 17 : Altheas_10
- Track 18 : Tissue_7, Lonelysoil_7, Jehoshaphat_10, Teehee_10
- Track 19 : Quammi_7, Viceroy_8, Rudy_7, Sillytadpoles_8
- Track 20 : AluminumJesus_6
- Track 21 : Hyperion_7
- Track 22 : WheelerS25_14
- Track 23 : Blab_6
- Track 24 : BabyDotz_7
- Track 25 : MorillMayhem_8
- Track 26 : Judebell_10
- Track 27 : Namago_8, Zhafia_10
- Track 28 : StrawberryJamm_11
- Track 29 : Mila11_10
- Track 30 : VanLee_91
- Track 31 : Colossa_88

Summary of Final Annotations (See graph section above for start numbers):

The start number called the most often in the published annotations is 19, it was called in 36 of the 38 non-draft genes in the pham.

Genes that call this "Most Annotated" start:

- Altheas_10, AluminumJesus_6, BabyDotz_7, BaconCheese_10, Blab_6, Casend_8, DonaldDuck_8, EverythinBagel_6, Fizzles_9, FrankDeliGuy_7, Gazebo_6, Grassboy_9, Hyperion_7, Jehoshaphat_10, Judebell_10, Kyva_10, Llemily_8, Lonelysoil_7, Mashley_6, Mentos_11, Mila11_10, MorillMayhem_8, Namago_8, Nike_9, Phabia_9, Quammi_7, Rowlf_4, Rudy_7, SallyK_9, Sillytadpoles_8, SlySloth_10, Squash_10, Statler_8, StrawberryJamm_11, Teehee_10, Tissue_7, Viceroy_8, Wayne3_8, WheelerS25_14, Wheelie_8, Zagie_8, Zhafia_10,

Genes that have the "Most Annotated" start but do not call it:

-

Genes that do not have the "Most Annotated" start:

- Colossa_88, VanLee_91,

Summary by start number:

Start 19:

- Found in 42 of 44 (95.5%) of genes in pham
- Manual Annotations of this start: 36 of 38
- Called 100.0% of time when present
- Phage (with cluster) where this start called: Altheas_10 (EG), AluminumJesus_6 (EG), BabyDotz_7 (EG), BaconCheese_10 (EG), Blab_6 (EG), Casend_8 (EG), DonaldDuck_8 (EG), EverythinBagel_6 (EG), Fizzles_9 (EG), FrankDeliGuy_7 (EG), Gazebo_6 (EG), Grassboy_9 (EG), Hyperion_7 (EG), Jehoshaphat_10 (EG), Judebell_10 (EG), Kyva_10 (EG), Llemily_8 (EG), Lonelysoil_7 (EG), Mashley_6 (EG), Mentos_11 (EG), Mila11_10 (EG), MorillMayhem_8 (EG), Namago_8 (EG), Nike_9 (EG), Phabia_9 (EG), Quammi_7 (EG), Rowlf_4 (EG), Rudy_7 (EG), SallyK_9 (EG), Sillytadpoles_8 (EG), SlySloth_10 (EG), Squash_10 (EG), Statler_8 (EG), StrawberryJamm_11 (EG), Teehee_10 (EG), Tissue_7 (EG), Viceroy_8 (EG), Wayne3_8 (EG), WheelerS25_14 (EG), Wheelie_8 (EG), Zagie_8 (EG), Zhafia_10 (EG),

Start 30:

- Found in 2 of 44 (4.5%) of genes in pham
- Manual Annotations of this start: 2 of 38
- Called 100.0% of time when present
- Phage (with cluster) where this start called: Colossa_88 (KA), VanLee_91 (KA),

Summary by clusters:

There are 2 clusters represented in this pham: EG, KA,

Info for manual annotations of cluster EG:

- Start number 19 was manually annotated 36 times for cluster EG.

Info for manual annotations of cluster KA:

- Start number 30 was manually annotated 2 times for cluster KA.

Gene Information:

Gene: Altheas_10 Start: 3572, Stop: 2817, Start Num: 19

Candidate Starts for Altheas_10:

(Start: 19 @3572 has 36 MA's), (23, 3452), (26, 3410), (28, 3368), (31, 3323), (37, 3260), (38, 3227), (39, 3215), (40, 3203), (41, 3197), (42, 3191), (43, 3185), (44, 3146), (47, 3080), (58, 3005), (61, 2924),

Gene: AluminumJesus_6 Start: 2462, Stop: 1749, Start Num: 19

Candidate Starts for AluminumJesus_6:

(Start: 19 @2462 has 36 MA's), (23, 2342), (26, 2300), (28, 2258), (29, 2246), (35, 2183), (41, 2135), (42, 2129), (45, 2057), (47, 2018), (48, 2012), (51, 1985), (58, 1943), (59, 1919),

Gene: BabyDotz_7 Start: 3165, Stop: 2443, Start Num: 19

Candidate Starts for BabyDotz_7:

(Start: 19 @3165 has 36 MA's), (23, 3045), (26, 3003), (28, 2961), (29, 2949), (35, 2886), (41, 2838), (42, 2832), (45, 2760), (47, 2721), (48, 2715), (51, 2688), (58, 2646), (59, 2622), (65, 2454),

Gene: BaconCheese_10 Start: 3414, Stop: 2701, Start Num: 19

Candidate Starts for BaconCheese_10:

(17, 3471), (Start: 19 @3414 has 36 MA's), (23, 3294), (26, 3252), (28, 3210), (29, 3198), (35, 3135), (41, 3087), (45, 3009), (48, 2964), (53, 2925), (58, 2895), (59, 2871), (63, 2781),

Gene: Blab_6 Start: 2244, Stop: 1528, Start Num: 19

Candidate Starts for Blab_6:

(Start: 19 @2244 has 36 MA's), (23, 2124), (26, 2082), (28, 2040), (29, 2028), (35, 1965), (41, 1917), (42, 1911), (44, 1866), (45, 1839), (47, 1800), (48, 1794), (59, 1707), (65, 1539),

Gene: Casend_8 Start: 3052, Stop: 2330, Start Num: 19

Candidate Starts for Casend_8:

(Start: 19 @3052 has 36 MA's), (22, 2944), (23, 2932), (26, 2890), (28, 2848), (29, 2836), (35, 2773), (41, 2725), (42, 2719), (44, 2674), (47, 2608), (48, 2602), (58, 2533), (65, 2341),

Gene: Colossa_88 Start: 49344, Stop: 49871, Start Num: 30

Candidate Starts for Colossa_88:

(7, 48768), (11, 48858), (12, 48867), (13, 48927), (14, 48933), (18, 49059), (20, 49119), (25, 49236), (Start: 30 @49344 has 2 MA's), (32, 49377), (35, 49422), (36, 49437), (37, 49443), (49, 49620), (52, 49644), (56, 49668), (60, 49731), (64, 49806),

Gene: DonaldDuck_8 Start: 2822, Stop: 2082, Start Num: 19

Candidate Starts for DonaldDuck_8:

(Start: 19 @2822 has 36 MA's), (23, 2702), (26, 2660), (28, 2618), (29, 2606), (33, 2543), (35, 2525), (41, 2477), (42, 2471), (44, 2426), (47, 2360), (48, 2354), (58, 2285), (65, 2093),

Gene: EverythinBagel_6 Start: 2903, Stop: 2181, Start Num: 19

Candidate Starts for EverythinBagel_6:

(Start: 19 @2903 has 36 MA's), (23, 2783), (26, 2741), (28, 2699), (29, 2687), (35, 2624), (41, 2576), (42, 2570), (44, 2525), (47, 2459), (48, 2453), (58, 2384), (65, 2192),

Gene: Fizzles_9 Start: 3173, Stop: 2631, Start Num: 19

Candidate Starts for Fizzles_9:

(9, 3449), (10, 3425), (Start: 19 @3173 has 36 MA's), (23, 3053), (27, 2993), (28, 2969), (29, 2957), (34, 2882), (35, 2879), (42, 2822), (44, 2777), (45, 2750), (50, 2681), (55, 2651),

Gene: FrankDeliGuy_7 Start: 2996, Stop: 2280, Start Num: 19

Candidate Starts for FrankDeliGuy_7:

(15, 3128), (Start: 19 @2996 has 36 MA's), (23, 2876), (26, 2834), (28, 2792), (29, 2780), (35, 2717), (41, 2669), (42, 2663), (44, 2618), (45, 2591), (47, 2552), (48, 2546), (59, 2459), (62, 2390), (65, 2291),

Gene: Gazebo_6 Start: 2778, Stop: 2062, Start Num: 19

Candidate Starts for Gazebo_6:

(Start: 19 @2778 has 36 MA's), (23, 2658), (26, 2616), (28, 2574), (29, 2562), (35, 2499), (41, 2451), (42, 2445), (44, 2400), (45, 2373), (47, 2334), (48, 2328), (59, 2241), (62, 2172), (65, 2073),

Gene: Grassboy_9 Start: 3271, Stop: 2558, Start Num: 19

Candidate Starts for Grassboy_9:

(Start: 19 @3271 has 36 MA's), (26, 3109), (28, 3067), (29, 3055), (35, 2992), (41, 2944), (42, 2938), (45, 2866), (47, 2827), (48, 2821), (51, 2794), (58, 2752), (59, 2728),

Gene: Hyperion_7 Start: 2815, Stop: 2099, Start Num: 19

Candidate Starts for Hyperion_7:

(1, 3421), (2, 3370), (3, 3364), (4, 3352), (5, 3340), (6, 3163), (8, 3127), (10, 3067), (15, 2947), (Start: 19 @2815 has 36 MA's), (24, 2692), (26, 2653), (28, 2611), (29, 2599), (35, 2536), (41, 2488), (42, 2482), (44, 2437), (45, 2410), (47, 2371), (48, 2365), (59, 2278), (62, 2209), (65, 2110),

Gene: Jehoshaphat_10 Start: 3721, Stop: 2990, Start Num: 19

Candidate Starts for Jehoshaphat_10:

(Start: 19 @3721 has 36 MA's), (26, 3559), (28, 3517), (29, 3505), (33, 3442), (35, 3424), (41, 3376), (42, 3370), (44, 3325), (47, 3259), (48, 3253), (58, 3184), (63, 3070),

Gene: Judebell_10 Start: 3340, Stop: 2627, Start Num: 19

Candidate Starts for Judebell_10:

(Start: 19 @3340 has 36 MA's), (26, 3178), (28, 3136), (29, 3124), (35, 3061), (41, 3013), (42, 3007), (44, 2962), (47, 2896), (48, 2890), (58, 2821), (63, 2707),

Gene: Kyva_10 Start: 3306, Stop: 2593, Start Num: 19

Candidate Starts for Kyva_10:

(Start: 19 @3306 has 36 MA's), (26, 3144), (28, 3102), (29, 3090), (35, 3027), (41, 2979), (42, 2973), (45, 2901), (47, 2862), (48, 2856), (51, 2829), (58, 2787), (59, 2763),

Gene: Llemily_8 Start: 2823, Stop: 2083, Start Num: 19

Candidate Starts for Llemily_8:

(Start: 19 @2823 has 36 MA's), (23, 2703), (26, 2661), (28, 2619), (29, 2607), (33, 2544), (35, 2526), (41, 2478), (42, 2472), (44, 2427), (47, 2361), (48, 2355), (58, 2286), (65, 2094),

Gene: Lonelysoil_7 Start: 2829, Stop: 2098, Start Num: 19

Candidate Starts for Lonelysoil_7:

(Start: 19 @2829 has 36 MA's), (26, 2667), (28, 2625), (29, 2613), (33, 2550), (35, 2532), (41, 2484), (42, 2478), (44, 2433), (47, 2367), (48, 2361), (58, 2292), (63, 2178),

Gene: Mashley_6 Start: 2632, Stop: 1916, Start Num: 19

Candidate Starts for Mashley_6:

(10, 2884), (15, 2764), (Start: 19 @2632 has 36 MA's), (23, 2512), (26, 2470), (28, 2428), (29, 2416), (35, 2353), (41, 2305), (42, 2299), (44, 2254), (45, 2227), (47, 2188), (48, 2182), (59, 2095), (62, 2026), (65, 1927),

Gene: Mentos_11 Start: 3584, Stop: 2844, Start Num: 19

Candidate Starts for Mentos_11:

(Start: 19 @3584 has 36 MA's), (26, 3422), (28, 3380), (29, 3368), (33, 3305), (35, 3287), (41, 3239), (42, 3233), (45, 3161), (47, 3122), (48, 3116), (51, 3089), (58, 3047), (59, 3023), (62, 2954), (65, 2855),

Gene: Mila11_10 Start: 3426, Stop: 2686, Start Num: 19

Candidate Starts for Mila11_10:

(Start: 19 @3426 has 36 MA's), (23, 3306), (26, 3264), (28, 3222), (29, 3210), (33, 3147), (35, 3129), (41, 3081), (42, 3075), (45, 3003), (48, 2958), (53, 2919), (58, 2889), (62, 2796), (65, 2697),

Gene: MorillMayhem_8 Start: 2871, Stop: 2131, Start Num: 19

Candidate Starts for MorillMayhem_8:

(5, 3396), (6, 3219), (8, 3183), (9, 3147), (10, 3123), (15, 3003), (Start: 19 @2871 has 36 MA's), (23, 2751), (26, 2709), (28, 2667), (29, 2655), (33, 2592), (35, 2574), (41, 2526), (42, 2520), (45, 2448), (48, 2403), (53, 2364), (58, 2334), (62, 2241), (65, 2142),

Gene: Namago_8 Start: 2647, Stop: 1934, Start Num: 19

Candidate Starts for Namago_8:

(Start: 19 @2647 has 36 MA's), (23, 2527), (26, 2485), (28, 2443), (29, 2431), (35, 2368), (41, 2320), (42, 2314), (44, 2269), (47, 2203), (48, 2197), (58, 2128), (63, 2014),

Gene: Nike_9 Start: 3098, Stop: 2376, Start Num: 19

Candidate Starts for Nike_9:

(Start: 19 @3098 has 36 MA's), (23, 2978), (26, 2936), (28, 2894), (29, 2882), (35, 2819), (41, 2771), (42, 2765), (45, 2693), (47, 2654), (48, 2648), (51, 2621), (58, 2579), (59, 2555), (62, 2486),

Gene: Phabia_9 Start: 3244, Stop: 2513, Start Num: 19

Candidate Starts for Phabia_9:

(5, 3769), (6, 3592), (8, 3556), (9, 3520), (10, 3496), (15, 3376), (Start: 19 @3244 has 36 MA's), (26, 3082), (28, 3040), (29, 3028), (33, 2965), (35, 2947), (42, 2893), (44, 2848), (48, 2776), (58, 2707), (63, 2593),

Gene: Quammi_7 Start: 2812, Stop: 2090, Start Num: 19

Candidate Starts for Quammi_7:

(Start: 19 @2812 has 36 MA's), (23, 2692), (26, 2650), (28, 2608), (29, 2596), (35, 2533), (41, 2485), (42, 2479), (44, 2434), (47, 2368), (48, 2362), (58, 2293), (65, 2101),

Gene: Rowlf_4 Start: 2408, Stop: 1701, Start Num: 19

Candidate Starts for Rowlf_4:

(Start: 19 @2408 has 36 MA's), (26, 2246), (28, 2204), (29, 2192), (35, 2129), (41, 2081), (42, 2075), (44, 2030), (45, 2003), (47, 1964), (48, 1958), (57, 1892), (59, 1871), (63, 1781),

Gene: Rudy_7 Start: 2812, Stop: 2090, Start Num: 19

Candidate Starts for Rudy_7:

(Start: 19 @2812 has 36 MA's), (23, 2692), (26, 2650), (28, 2608), (29, 2596), (35, 2533), (41, 2485), (42, 2479), (44, 2434), (47, 2368), (48, 2362), (58, 2293), (65, 2101),

Gene: SallyK_9 Start: 3771, Stop: 3040, Start Num: 19

Candidate Starts for SallyK_9:

(16, 3846), (Start: 19 @3771 has 36 MA's), (21, 3744), (23, 3651), (26, 3609), (28, 3567), (33, 3492), (35, 3474), (41, 3426), (42, 3420), (44, 3375), (47, 3309), (48, 3303), (58, 3234), (63, 3120),

Gene: Sillytadpoles_8 Start: 2810, Stop: 2088, Start Num: 19

Candidate Starts for Sillytadpoles_8:

(Start: 19 @2810 has 36 MA's), (23, 2690), (26, 2648), (28, 2606), (29, 2594), (35, 2531), (41, 2483), (42, 2477), (44, 2432), (47, 2366), (48, 2360), (58, 2291), (65, 2099),

Gene: SlySloth_10 Start: 3352, Stop: 2645, Start Num: 19

Candidate Starts for SlySloth_10:

(Start: 19 @3352 has 36 MA's), (23, 3232), (26, 3190), (28, 3148), (29, 3136), (35, 3073), (41, 3025), (42, 3019), (44, 2974), (45, 2947), (47, 2908), (48, 2902), (57, 2836), (59, 2815), (63, 2725),

Gene: Squash_10 Start: 3153, Stop: 2431, Start Num: 19

Candidate Starts for Squash_10:

(Start: 19 @3153 has 36 MA's), (23, 3033), (26, 2991), (28, 2949), (29, 2937), (35, 2874), (41, 2826), (42, 2820), (45, 2748), (47, 2709), (48, 2703), (51, 2676), (58, 2634), (59, 2610), (62, 2541),

Gene: Statler_8 Start: 3176, Stop: 2469, Start Num: 19

Candidate Starts for Statler_8:

(Start: 19 @3176 has 36 MA's), (26, 3014), (28, 2972), (29, 2960), (35, 2897), (41, 2849), (42, 2843), (44, 2798), (45, 2771), (47, 2732), (48, 2726), (57, 2660), (59, 2639),

Gene: StrawberryJamm_11 Start: 3121, Stop: 2456, Start Num: 19

Candidate Starts for StrawberryJamm_11:

(15, 3253), (Start: 19 @3121 has 36 MA's), (23, 3001), (26, 2959), (28, 2917), (40, 2812), (46, 2737), (57, 2653), (65, 2467),

Gene: Teehee_10 Start: 3721, Stop: 2990, Start Num: 19

Candidate Starts for Teehee_10:

(Start: 19 @3721 has 36 MA's), (26, 3559), (28, 3517), (29, 3505), (33, 3442), (35, 3424), (41, 3376), (42, 3370), (44, 3325), (47, 3259), (48, 3253), (58, 3184), (63, 3070),

Gene: Tissue_7 Start: 2852, Stop: 2121, Start Num: 19

Candidate Starts for Tissue_7:

(Start: 19 @2852 has 36 MA's), (26, 2690), (28, 2648), (29, 2636), (33, 2573), (35, 2555), (41, 2507), (42, 2501), (44, 2456), (47, 2390), (48, 2384), (58, 2315), (63, 2201),

Gene: VanLee_91 Start: 50243, Stop: 50776, Start Num: 30

Candidate Starts for VanLee_91:

(12, 49766), (14, 49832), (18, 49958), (20, 50018), (25, 50135), (Start: 30 @50243 has 2 MA's), (35, 50321), (37, 50342), (49, 50525), (54, 50555),

Gene: Viceroy_8 Start: 2812, Stop: 2090, Start Num: 19

Candidate Starts for Viceroy_8:

(Start: 19 @2812 has 36 MA's), (23, 2692), (26, 2650), (28, 2608), (29, 2596), (35, 2533), (41, 2485), (42, 2479), (44, 2434), (47, 2368), (48, 2362), (58, 2293), (65, 2101),

Gene: Wayne3_8 Start: 3047, Stop: 2325, Start Num: 19

Candidate Starts for Wayne3_8:

(Start: 19 @3047 has 36 MA's), (22, 2939), (23, 2927), (26, 2885), (28, 2843), (29, 2831), (35, 2768), (41, 2720), (42, 2714), (44, 2669), (47, 2603), (48, 2597), (58, 2528), (65, 2336),

Gene: WheelerS25_14 Start: 4551, Stop: 3844, Start Num: 19

Candidate Starts for WheelerS25_14:

(Start: 19 @4551 has 36 MA's), (23, 4431), (26, 4389), (28, 4347), (29, 4335), (35, 4272), (41, 4224), (44, 4173), (45, 4146), (47, 4107), (48, 4101), (59, 4014),

Gene: Wheelie_8 Start: 2822, Stop: 2082, Start Num: 19

Candidate Starts for Wheelie_8:

(Start: 19 @2822 has 36 MA's), (23, 2702), (26, 2660), (28, 2618), (29, 2606), (33, 2543), (35, 2525), (41, 2477), (42, 2471), (44, 2426), (47, 2360), (48, 2354), (58, 2285), (65, 2093),

Gene: Zagie_8 Start: 3145, Stop: 2438, Start Num: 19

Candidate Starts for Zagie_8:

(Start: 19 @3145 has 36 MA's), (26, 2983), (28, 2941), (29, 2929), (35, 2866), (41, 2818), (42, 2812), (44, 2767), (45, 2740), (47, 2701), (48, 2695), (57, 2629), (59, 2608), (63, 2518),

Gene: Zhafia_10 Start: 3317, Stop: 2604, Start Num: 19

Candidate Starts for Zhafia_10:

(Start: 19 @3317 has 36 MA's), (23, 3197), (26, 3155), (28, 3113), (29, 3101), (35, 3038), (41, 2990), (42, 2984), (44, 2939), (47, 2873), (48, 2867), (58, 2798), (63, 2684),