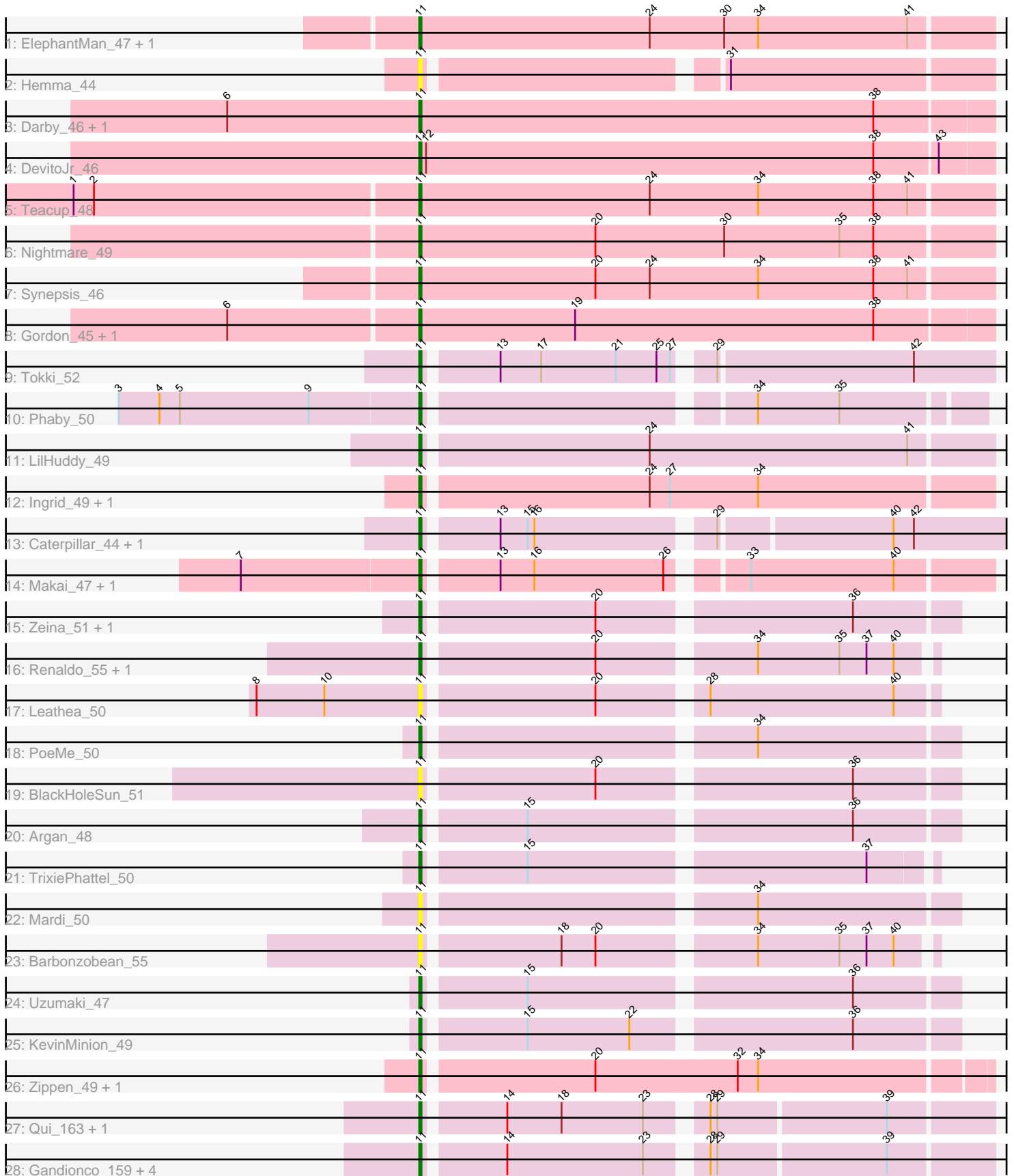


Pham 308848



Note: Tracks are now grouped by subcluster and scaled. Switching in subcluster is indicated by changes in track color. Track scale is now set by default to display the region 30 bp upstream of start 1 to 30 bp downstream of the last possible start. If this default region is judged to be packed too tightly with annotated starts, the track will be further scaled to only show that region of the ORF with annotated starts. This action will be indicated by adding "Zoomed" to the title. For starts, yellow indicates the location of called starts comprised solely of Glimmer/GeneMark auto-annotations, green indicates the location of called starts with at least 1 manual gene annotation.

## Pham 308848 Report

This analysis was run 06/27/26 on database version 652.

Pham number 308848 has 42 members, 10 are drafts.

Phages represented in each track:

- Track 1 : ElephantMan\_47, Niktson\_47
- Track 2 : Hemma\_44
- Track 3 : Darby\_46, Trustiboi\_47
- Track 4 : DevitoJr\_46
- Track 5 : Teacup\_48
- Track 6 : Nightmare\_49
- Track 7 : Synopsis\_46
- Track 8 : Gordon\_45, CastorTray\_50
- Track 9 : Tokki\_52
- Track 10 : Phaby\_50
- Track 11 : LilHuddy\_49
- Track 12 : Ingrid\_49, Loretta\_49
- Track 13 : Caterpillar\_44, MediumFry\_45
- Track 14 : Makai\_47, Truckee\_45
- Track 15 : Zeina\_51, Tenney120\_51
- Track 16 : Renaldo\_55, Lewando\_52
- Track 17 : Leathea\_50
- Track 18 : PoeMe\_50
- Track 19 : BlackHoleSun\_51
- Track 20 : Argan\_48
- Track 21 : TrixiePhattel\_50
- Track 22 : Mardi\_50
- Track 23 : Barbonzobean\_55
- Track 24 : Uzumaki\_47
- Track 25 : KevinMinion\_49
- Track 26 : Zippen\_49, Inked\_51
- Track 27 : Qui\_163, Paella\_163
- Track 28 : Gandionco\_159, Elver\_163, Kureo\_158, JeNeSaisPas\_156, Marianna39\_159

### ***Summary of Final Annotations (See graph section above for start numbers):***

The start number called the most often in the published annotations is 11, it was called in 32 of the 32 non-draft genes in the pham.

Genes that call this "Most Annotated" start:

- Argan\_48, Barbonzobean\_55, BlackHoleSun\_51, CastorTray\_50, Caterpillar\_44, Darby\_46, DevitoJr\_46, ElephantMan\_47, Elver\_163, Gandionco\_159, Gordon\_45, Hemma\_44, Ingrid\_49, Inked\_51, JeNeSaisPas\_156, KevinMinion\_49, Kureo\_158, Leathea\_50, Lewando\_52, LilHuddy\_49, Loretta\_49, Makai\_47, Mardi\_50, Marianna39\_159, MediumFry\_45, Nightmare\_49, Niktson\_47, Paella\_163, Phaby\_50, PoeMe\_50, Qui\_163, Renaldo\_55, Synepsis\_46, Teacup\_48, Tenney120\_51, Tokki\_52, TrixiePhattel\_50, Truckee\_45, Trustiboi\_47, Uzumaki\_47, Zeina\_51, Zippen\_49,

Genes that have the "Most Annotated" start but do not call it:

- 

Genes that do not have the "Most Annotated" start:

- 

### Summary by start number:

Start 11:

- Found in 42 of 42 ( 100.0% ) of genes in pham
- Manual Annotations of this start: 32 of 32
- Called 100.0% of time when present
- Phage (with cluster) where this start called: Argan\_48 (AU6), Barbonzobean\_55 (AU6), BlackHoleSun\_51 (AU6), CastorTray\_50 (AU1), Caterpillar\_44 (AU4), Darby\_46 (AU1), DevitoJr\_46 (AU1), ElephantMan\_47 (AU1), Elver\_163 (FK), Gandionco\_159 (FK), Gordon\_45 (AU1), Hemma\_44 (AU1), Ingrid\_49 (AU3), Inked\_51 (AU7), JeNeSaisPas\_156 (FK), KevinMinion\_49 (AU6), Kureo\_158 (FK), Leathea\_50 (AU6), Lewando\_52 (AU6), LilHuddy\_49 (AU2), Loretta\_49 (AU3), Makai\_47 (AU5), Mardi\_50 (AU6), Marianna39\_159 (FK), MediumFry\_45 (AU4), Nightmare\_49 (AU1), Niktson\_47 (AU1), Paella\_163 (FK), Phaby\_50 (AU2), PoeMe\_50 (AU6), Qui\_163 (FK), Renaldo\_55 (AU6), Synepsis\_46 (AU1), Teacup\_48 (AU1), Tenney120\_51 (AU6), Tokki\_52 (AU2), TrixiePhattel\_50 (AU6), Truckee\_45 (AU5), Trustiboi\_47 (AU1), Uzumaki\_47 (AU6), Zeina\_51 (AU6), Zippen\_49 (AU7),

### Summary by clusters:

There are 8 clusters represented in this pham: AU1, AU3, AU2, AU5, AU4, AU7, AU6, FK,

Info for manual annotations of cluster AU1:

- Start number 11 was manually annotated 10 times for cluster AU1.

Info for manual annotations of cluster AU2:

- Start number 11 was manually annotated 3 times for cluster AU2.

Info for manual annotations of cluster AU3:

- Start number 11 was manually annotated 2 times for cluster AU3.

Info for manual annotations of cluster AU4:

- Start number 11 was manually annotated 2 times for cluster AU4.

Info for manual annotations of cluster AU5:

- Start number 11 was manually annotated 2 times for cluster AU5.

Info for manual annotations of cluster AU6:

- Start number 11 was manually annotated 8 times for cluster AU6.

Info for manual annotations of cluster AU7:

- Start number 11 was manually annotated 2 times for cluster AU7.

Info for manual annotations of cluster FK:

- Start number 11 was manually annotated 3 times for cluster FK.

### ***Gene Information:***

Gene: Argan\_48 Start: 33040, Stop: 33261, Start Num: 11

Candidate Starts for Argan\_48:

(Start: 11 @33040 has 32 MA's), (15, 33082), (36, 33217),

Gene: Barbonzobean\_55 Start: 34940, Stop: 35149, Start Num: 11

Candidate Starts for Barbonzobean\_55:

(Start: 11 @34940 has 32 MA's), (18, 34997), (20, 35012), (34, 35075), (35, 35111), (37, 35123), (40, 35135),

Gene: BlackHoleSun\_51 Start: 33165, Stop: 33386, Start Num: 11

Candidate Starts for BlackHoleSun\_51:

(Start: 11 @33165 has 32 MA's), (20, 33237), (36, 33342),

Gene: CastorTray\_50 Start: 35233, Stop: 35484, Start Num: 11

Candidate Starts for CastorTray\_50:

(6, 35152), (Start: 11 @35233 has 32 MA's), (19, 35302), (38, 35434),

Gene: Caterpillar\_44 Start: 33619, Stop: 33879, Start Num: 11

Candidate Starts for Caterpillar\_44:

(Start: 11 @33619 has 32 MA's), (13, 33649), (15, 33661), (16, 33664), (29, 33736), (40, 33808), (42, 33817),

Gene: Darby\_46 Start: 34407, Stop: 34658, Start Num: 11

Candidate Starts for Darby\_46:

(6, 34323), (Start: 11 @34407 has 32 MA's), (38, 34608),

Gene: DevitoJr\_46 Start: 34595, Stop: 34846, Start Num: 11

Candidate Starts for DevitoJr\_46:

(Start: 11 @34595 has 32 MA's), (12, 34598), (38, 34796), (43, 34823),

Gene: ElephantMan\_47 Start: 35085, Stop: 35336, Start Num: 11

Candidate Starts for ElephantMan\_47:

(Start: 11 @35085 has 32 MA's), (24, 35187), (30, 35220), (34, 35235), (41, 35301),

Gene: Elver\_163 Start: 81364, Stop: 81597, Start Num: 11

Candidate Starts for Elver\_163:

(Start: 11 @81364 has 32 MA's), (14, 81397), (23, 81457), (28, 81478), (29, 81481), (39, 81553),

Gene: Gandionco\_159 Start: 80444, Stop: 80677, Start Num: 11  
Candidate Starts for Gandionco\_159:  
(Start: 11 @80444 has 32 MA's), (14, 80477), (23, 80537), (28, 80558), (29, 80561), (39, 80633),

Gene: Gordon\_45 Start: 35224, Stop: 35475, Start Num: 11  
Candidate Starts for Gordon\_45:  
(6, 35143), (Start: 11 @35224 has 32 MA's), (19, 35293), (38, 35425),

Gene: Hemma\_44 Start: 31430, Stop: 31663, Start Num: 11  
Candidate Starts for Hemma\_44:  
(Start: 11 @31430 has 32 MA's), (31, 31550),

Gene: Ingrid\_49 Start: 34434, Stop: 34679, Start Num: 11  
Candidate Starts for Ingrid\_49:  
(Start: 11 @34434 has 32 MA's), (24, 34530), (27, 34539), (34, 34578),

Gene: Inked\_51 Start: 35565, Stop: 35807, Start Num: 11  
Candidate Starts for Inked\_51:  
(Start: 11 @35565 has 32 MA's), (20, 35637), (32, 35700), (34, 35709),

Gene: JeNeSaisPas\_156 Start: 81040, Stop: 81273, Start Num: 11  
Candidate Starts for JeNeSaisPas\_156:  
(Start: 11 @81040 has 32 MA's), (14, 81073), (23, 81133), (28, 81154), (29, 81157), (39, 81229),

Gene: KevinMinion\_49 Start: 33991, Stop: 34212, Start Num: 11  
Candidate Starts for KevinMinion\_49:  
(Start: 11 @33991 has 32 MA's), (15, 34033), (22, 34078), (36, 34168),

Gene: Kureo\_158 Start: 80539, Stop: 80772, Start Num: 11  
Candidate Starts for Kureo\_158:  
(Start: 11 @80539 has 32 MA's), (14, 80572), (23, 80632), (28, 80653), (29, 80656), (39, 80728),

Gene: Leathea\_50 Start: 33107, Stop: 33319, Start Num: 11  
Candidate Starts for Leathea\_50:  
(8, 33035), (10, 33065), (Start: 11 @33107 has 32 MA's), (20, 33179), (28, 33221), (40, 33302),

Gene: Lewando\_52 Start: 34682, Stop: 34891, Start Num: 11  
Candidate Starts for Lewando\_52:  
(Start: 11 @34682 has 32 MA's), (20, 34754), (34, 34817), (35, 34853), (37, 34865), (40, 34877),

Gene: LilHuddy\_49 Start: 34651, Stop: 34896, Start Num: 11  
Candidate Starts for LilHuddy\_49:  
(Start: 11 @34651 has 32 MA's), (24, 34747), (41, 34861),

Gene: Loretta\_49 Start: 34434, Stop: 34679, Start Num: 11  
Candidate Starts for Loretta\_49:  
(Start: 11 @34434 has 32 MA's), (24, 34530), (27, 34539), (34, 34578),

Gene: Makai\_47 Start: 34628, Stop: 34861, Start Num: 11  
Candidate Starts for Makai\_47:  
(7, 34550), (Start: 11 @34628 has 32 MA's), (13, 34658), (16, 34673), (26, 34730), (33, 34757), (40, 34820),

Gene: Mardi\_50 Start: 33566, Stop: 33787, Start Num: 11

Candidate Starts for Mardi\_50:

(Start: 11 @33566 has 32 MA's), (34, 33701),

Gene: Marianna39\_159 Start: 81049, Stop: 81282, Start Num: 11

Candidate Starts for Marianna39\_159:

(Start: 11 @81049 has 32 MA's), (14, 81082), (23, 81142), (28, 81163), (29, 81166), (39, 81238),

Gene: MediumFry\_45 Start: 33924, Stop: 34184, Start Num: 11

Candidate Starts for MediumFry\_45:

(Start: 11 @33924 has 32 MA's), (13, 33954), (15, 33966), (16, 33969), (29, 34041), (40, 34113), (42, 34122),

Gene: Nightmare\_49 Start: 35641, Stop: 35892, Start Num: 11

Candidate Starts for Nightmare\_49:

(Start: 11 @35641 has 32 MA's), (20, 35719), (30, 35776), (35, 35827), (38, 35842),

Gene: Niktson\_47 Start: 35085, Stop: 35336, Start Num: 11

Candidate Starts for Niktson\_47:

(Start: 11 @35085 has 32 MA's), (24, 35187), (30, 35220), (34, 35235), (41, 35301),

Gene: Paella\_163 Start: 82235, Stop: 82468, Start Num: 11

Candidate Starts for Paella\_163:

(Start: 11 @82235 has 32 MA's), (14, 82268), (18, 82292), (23, 82328), (28, 82349), (29, 82352), (39, 82424),

Gene: Phaby\_50 Start: 35195, Stop: 35422, Start Num: 11

Candidate Starts for Phaby\_50:

(3, 35063), (4, 35081), (5, 35090), (9, 35147), (Start: 11 @35195 has 32 MA's), (34, 35327), (35, 35363),

Gene: PoeMe\_50 Start: 33733, Stop: 33954, Start Num: 11

Candidate Starts for PoeMe\_50:

(Start: 11 @33733 has 32 MA's), (34, 33868),

Gene: Qui\_163 Start: 82235, Stop: 82468, Start Num: 11

Candidate Starts for Qui\_163:

(Start: 11 @82235 has 32 MA's), (14, 82268), (18, 82292), (23, 82328), (28, 82349), (29, 82352), (39, 82424),

Gene: Renaldo\_55 Start: 34991, Stop: 35200, Start Num: 11

Candidate Starts for Renaldo\_55:

(Start: 11 @34991 has 32 MA's), (20, 35063), (34, 35126), (35, 35162), (37, 35174), (40, 35186),

Gene: Synopsis\_46 Start: 34754, Stop: 35005, Start Num: 11

Candidate Starts for Synopsis\_46:

(Start: 11 @34754 has 32 MA's), (20, 34832), (24, 34856), (34, 34904), (38, 34955), (41, 34970),

Gene: Teacup\_48 Start: 35114, Stop: 35365, Start Num: 11

Candidate Starts for Teacup\_48:

(1, 34964), (2, 34973), (Start: 11 @35114 has 32 MA's), (24, 35216), (34, 35264), (38, 35315), (41, 35330),

Gene: Tenney120\_51 Start: 33775, Stop: 33996, Start Num: 11

Candidate Starts for Tenney120\_51:

(Start: 11 @33775 has 32 MA's), (20, 33847), (36, 33952),

Gene: Tokki\_52 Start: 34823, Stop: 35059, Start Num: 11

Candidate Starts for Tokki\_52:

(Start: 11 @34823 has 32 MA's), (13, 34853), (17, 34871), (21, 34904), (25, 34922), (27, 34928), (29, 34940), (42, 35024),

Gene: TrixiePhattel\_50 Start: 33138, Stop: 33347, Start Num: 11

Candidate Starts for TrixiePhattel\_50:

(Start: 11 @33138 has 32 MA's), (15, 33180), (37, 33321),

Gene: Truckee\_45 Start: 34418, Stop: 34651, Start Num: 11

Candidate Starts for Truckee\_45:

(7, 34340), (Start: 11 @34418 has 32 MA's), (13, 34448), (16, 34463), (26, 34520), (33, 34547), (40, 34610),

Gene: Trustiboi\_47 Start: 34955, Stop: 35206, Start Num: 11

Candidate Starts for Trustiboi\_47:

(6, 34871), (Start: 11 @34955 has 32 MA's), (38, 35156),

Gene: Uzumaki\_47 Start: 33233, Stop: 33454, Start Num: 11

Candidate Starts for Uzumaki\_47:

(Start: 11 @33233 has 32 MA's), (15, 33275), (36, 33410),

Gene: Zeina\_51 Start: 33783, Stop: 34004, Start Num: 11

Candidate Starts for Zeina\_51:

(Start: 11 @33783 has 32 MA's), (20, 33855), (36, 33960),

Gene: Zippen\_49 Start: 35264, Stop: 35506, Start Num: 11

Candidate Starts for Zippen\_49:

(Start: 11 @35264 has 32 MA's), (20, 35336), (32, 35399), (34, 35408),