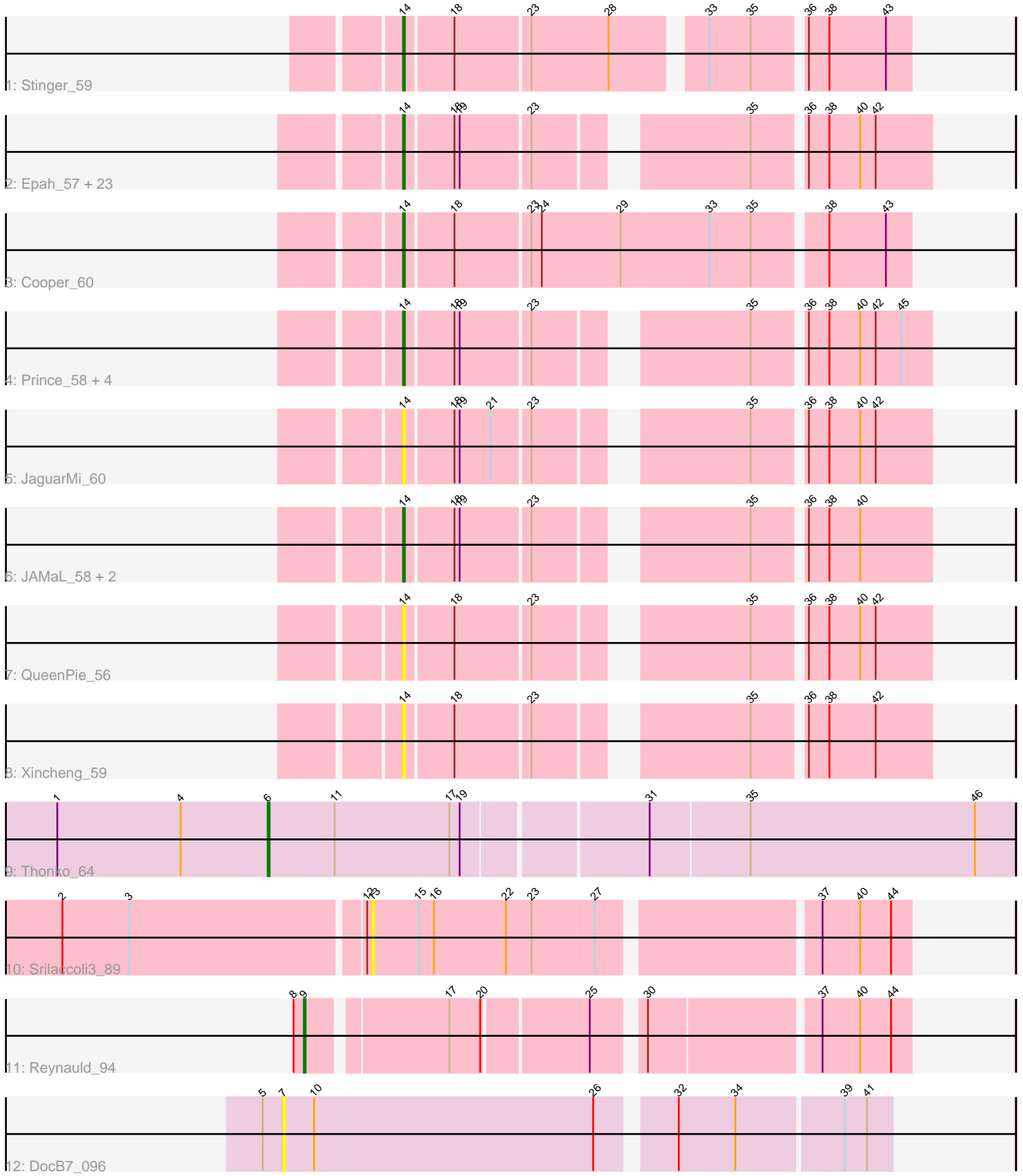


Pham 308858



Note: Tracks are now grouped by subcluster and scaled. Switching in subcluster is indicated by changes in track color. Track scale is now set by default to display the region 30 bp upstream of start 1 to 30 bp downstream of the last possible start. If this default region is judged to be packed too tightly with annotated starts, the track will be further scaled to only show that region of the ORF with annotated starts. This action will be indicated by adding "Zoomed" to the title. For starts, yellow indicates the location of called starts comprised solely of Glimmer/GeneMark auto-annotations, green indicates the location of called starts with at least 1 manual gene annotation.

Pham 308858 Report

This analysis was run 06/27/26 on database version 652.

Pham number 308858 has 41 members, 14 are drafts.

Phages represented in each track:

- Track 1 : Stinger_59
- Track 2 : Epah_57, Fortunato_59, BobbyK_59, Hally898_57, BrownCNA_60, ChrisnMich_58, Fanaw_57, GinPorsche_58, Antihero_57, JoyceMaria_58, Waleliano_58, Hangman_58, VioletZ_60, Magpie_57, Poster_57, Mithril_58, Ahwei_57, Heath_57, Frederick_59, Lolalove_59, Nanao_57, Lambano_57, Zemanar_59, RawrgerThat_59
- Track 3 : Cooper_60
- Track 4 : Prince_58, Apex_59, Austelle_59, Mudslide_58, Hydro_58
- Track 5 : JaguarMi_60
- Track 6 : JAMaL_58, LittleDigger_57, Renkei_57
- Track 7 : QueenPie_56
- Track 8 : Xincheng_59
- Track 9 : Thonko_64
- Track 10 : Srilaccoli3_89
- Track 11 : Reynauld_94
- Track 12 : DocB7_096

Summary of Final Annotations (See graph section above for start numbers):

The start number called the most often in the published annotations is 14, it was called in 25 of the 27 non-draft genes in the pham.

Genes that call this "Most Annotated" start:

- Ahwei_57, Antihero_57, Apex_59, Austelle_59, BobbyK_59, BrownCNA_60, ChrisnMich_58, Cooper_60, Epah_57, Fanaw_57, Fortunato_59, Frederick_59, GinPorsche_58, Hally898_57, Hangman_58, Heath_57, Hydro_58, JAMaL_58, JaguarMi_60, JoyceMaria_58, Lambano_57, LittleDigger_57, Lolalove_59, Magpie_57, Mithril_58, Mudslide_58, Nanao_57, Poster_57, Prince_58, QueenPie_56, RawrgerThat_59, Renkei_57, Stinger_59, VioletZ_60, Waleliano_58, Xincheng_59, Zemanar_59,

Genes that have the "Most Annotated" start but do not call it:

-

Genes that do not have the "Most Annotated" start:

- DocB7_096, Reynauld_94, Srilaccoli3_89, Thonko_64,

Summary by start number:

Start 6:

- Found in 1 of 41 (2.4%) of genes in pham
- Manual Annotations of this start: 1 of 27
- Called 100.0% of time when present
- Phage (with cluster) where this start called: Thonko_64 (B8),

Start 7:

- Found in 1 of 41 (2.4%) of genes in pham
- No Manual Annotations of this start.
- Called 100.0% of time when present
- Phage (with cluster) where this start called: DocB7_096 (singleton),

Start 9:

- Found in 1 of 41 (2.4%) of genes in pham
- Manual Annotations of this start: 1 of 27
- Called 100.0% of time when present
- Phage (with cluster) where this start called: Reynauld_94 (CH),

Start 13:

- Found in 1 of 41 (2.4%) of genes in pham
- No Manual Annotations of this start.
- Called 100.0% of time when present
- Phage (with cluster) where this start called: Srilaccoli3_89 (CH),

Start 14:

- Found in 37 of 41 (90.2%) of genes in pham
- Manual Annotations of this start: 25 of 27
- Called 100.0% of time when present
- Phage (with cluster) where this start called: Ahwei_57 (B4), Antihero_57 (B4), Apex_59 (B4), Austelle_59 (B4), BobbyK_59 (B4), BrownCNA_60 (B4), ChrisnMich_58 (B4), Cooper_60 (B4), Epah_57 (B4), Fanaw_57 (B4), Fortunato_59 (B4), Frederick_59 (B4), GinPorsche_58 (B4), Hally898_57 (B4), Hangman_58 (B4), Heath_57 (B4), Hydro_58 (B4), JAMaL_58 (B4), JaguarMi_60 (B4), JoyceMaria_58 (B4), Lambano_57 (B4), LittleDigger_57 (B4), Lolalove_59 (B4), Magpie_57 (B4), Mithril_58 (B4), Mudslide_58 (B4), Nanao_57 (B4), Poster_57 (B4), Prince_58 (B4), QueenPie_56 (B4), RawrgerThat_59 (B4), Renkei_57 (B4), Stinger_59 (B4), VioletZ_60 (B4), Waleliano_58 (B4), Xincheng_59 (B4), Zemanar_59 (B4),

Summary by clusters:

There are 4 clusters represented in this pham: B4, singleton, CH, B8,

Info for manual annotations of cluster B4:

- Start number 14 was manually annotated 25 times for cluster B4.

Info for manual annotations of cluster B8:

- Start number 6 was manually annotated 1 time for cluster B8.

Info for manual annotations of cluster CH:

•Start number 9 was manually annotated 1 time for cluster CH.

Gene Information:

Gene: Ahwei_57 Start: 55326, Stop: 55054, Start Num: 14

Candidate Starts for Ahwei_57:

(Start: 14 @55326 has 25 MA's), (18, 55299), (19, 55296), (23, 55257), (35, 55152), (36, 55125), (38, 55113), (40, 55095), (42, 55086),

Gene: Antihero_57 Start: 55324, Stop: 55052, Start Num: 14

Candidate Starts for Antihero_57:

(Start: 14 @55324 has 25 MA's), (18, 55297), (19, 55294), (23, 55255), (35, 55150), (36, 55123), (38, 55111), (40, 55093), (42, 55084),

Gene: Apex_59 Start: 56547, Stop: 56275, Start Num: 14

Candidate Starts for Apex_59:

(Start: 14 @56547 has 25 MA's), (18, 56520), (19, 56517), (23, 56478), (35, 56373), (36, 56346), (38, 56334), (40, 56316), (42, 56307), (45, 56292),

Gene: Austelle_59 Start: 57003, Stop: 56731, Start Num: 14

Candidate Starts for Austelle_59:

(Start: 14 @57003 has 25 MA's), (18, 56976), (19, 56973), (23, 56934), (35, 56829), (36, 56802), (38, 56790), (40, 56772), (42, 56763), (45, 56748),

Gene: BobbyK_59 Start: 56313, Stop: 56041, Start Num: 14

Candidate Starts for BobbyK_59:

(Start: 14 @56313 has 25 MA's), (18, 56286), (19, 56283), (23, 56244), (35, 56139), (36, 56112), (38, 56100), (40, 56082), (42, 56073),

Gene: BrownCNA_60 Start: 56670, Stop: 56398, Start Num: 14

Candidate Starts for BrownCNA_60:

(Start: 14 @56670 has 25 MA's), (18, 56643), (19, 56640), (23, 56601), (35, 56496), (36, 56469), (38, 56457), (40, 56439), (42, 56430),

Gene: ChrisnMich_58 Start: 55338, Stop: 55066, Start Num: 14

Candidate Starts for ChrisnMich_58:

(Start: 14 @55338 has 25 MA's), (18, 55311), (19, 55308), (23, 55269), (35, 55164), (36, 55137), (38, 55125), (40, 55107), (42, 55098),

Gene: Cooper_60 Start: 55804, Stop: 55523, Start Num: 14

Candidate Starts for Cooper_60:

(Start: 14 @55804 has 25 MA's), (18, 55777), (23, 55735), (24, 55729), (29, 55684), (33, 55633), (35, 55609), (38, 55570), (43, 55537),

Gene: DocB7_096 Start: 67390, Stop: 67052, Start Num: 7

Candidate Starts for DocB7_096:

(5, 67402), (7, 67390), (10, 67372), (26, 67210), (32, 67171), (34, 67138), (39, 67078), (41, 67066),

Gene: Epah_57 Start: 55324, Stop: 55052, Start Num: 14

Candidate Starts for Epah_57:

(Start: 14 @55324 has 25 MA's), (18, 55297), (19, 55294), (23, 55255), (35, 55150), (36, 55123), (38, 55111), (40, 55093), (42, 55084),

Gene: Fanaw_57 Start: 56225, Stop: 55953, Start Num: 14

Candidate Starts for Fanaw_57:

(Start: 14 @56225 has 25 MA's), (18, 56198), (19, 56195), (23, 56156), (35, 56051), (36, 56024), (38, 56012), (40, 55994), (42, 55985),

Gene: Fortunato_59 Start: 56365, Stop: 56093, Start Num: 14

Candidate Starts for Fortunato_59:

(Start: 14 @56365 has 25 MA's), (18, 56338), (19, 56335), (23, 56296), (35, 56191), (36, 56164), (38, 56152), (40, 56134), (42, 56125),

Gene: Frederick_59 Start: 56256, Stop: 55984, Start Num: 14

Candidate Starts for Frederick_59:

(Start: 14 @56256 has 25 MA's), (18, 56229), (19, 56226), (23, 56187), (35, 56082), (36, 56055), (38, 56043), (40, 56025), (42, 56016),

Gene: GinPorsche_58 Start: 55324, Stop: 55052, Start Num: 14

Candidate Starts for GinPorsche_58:

(Start: 14 @55324 has 25 MA's), (18, 55297), (19, 55294), (23, 55255), (35, 55150), (36, 55123), (38, 55111), (40, 55093), (42, 55084),

Gene: Hally898_57 Start: 55339, Stop: 55067, Start Num: 14

Candidate Starts for Hally898_57:

(Start: 14 @55339 has 25 MA's), (18, 55312), (19, 55309), (23, 55270), (35, 55165), (36, 55138), (38, 55126), (40, 55108), (42, 55099),

Gene: Hangman_58 Start: 56413, Stop: 56141, Start Num: 14

Candidate Starts for Hangman_58:

(Start: 14 @56413 has 25 MA's), (18, 56386), (19, 56383), (23, 56344), (35, 56239), (36, 56212), (38, 56200), (40, 56182), (42, 56173),

Gene: Heath_57 Start: 56039, Stop: 55767, Start Num: 14

Candidate Starts for Heath_57:

(Start: 14 @56039 has 25 MA's), (18, 56012), (19, 56009), (23, 55970), (35, 55865), (36, 55838), (38, 55826), (40, 55808), (42, 55799),

Gene: Hydro_58 Start: 56390, Stop: 56118, Start Num: 14

Candidate Starts for Hydro_58:

(Start: 14 @56390 has 25 MA's), (18, 56363), (19, 56360), (23, 56321), (35, 56216), (36, 56189), (38, 56177), (40, 56159), (42, 56150), (45, 56135),

Gene: JAMaL_58 Start: 56431, Stop: 56159, Start Num: 14

Candidate Starts for JAMaL_58:

(Start: 14 @56431 has 25 MA's), (18, 56404), (19, 56401), (23, 56362), (35, 56257), (36, 56230), (38, 56218), (40, 56200),

Gene: JaguarMi_60 Start: 57457, Stop: 57185, Start Num: 14

Candidate Starts for JaguarMi_60:

(Start: 14 @57457 has 25 MA's), (18, 57430), (19, 57427), (21, 57409), (23, 57388), (35, 57283), (36, 57256), (38, 57244), (40, 57226), (42, 57217),

Gene: JoyceMaria_58 Start: 56293, Stop: 56021, Start Num: 14

Candidate Starts for JoyceMaria_58:

(Start: 14 @56293 has 25 MA's), (18, 56266), (19, 56263), (23, 56224), (35, 56119), (36, 56092), (38, 56080), (40, 56062), (42, 56053),

Gene: Lambano_57 Start: 55339, Stop: 55067, Start Num: 14

Candidate Starts for Lambano_57:

(Start: 14 @55339 has 25 MA's), (18, 55312), (19, 55309), (23, 55270), (35, 55165), (36, 55138), (38, 55126), (40, 55108), (42, 55099),

Gene: LittleDigger_57 Start: 55349, Stop: 55077, Start Num: 14

Candidate Starts for LittleDigger_57:

(Start: 14 @55349 has 25 MA's), (18, 55322), (19, 55319), (23, 55280), (35, 55175), (36, 55148), (38, 55136), (40, 55118),

Gene: Lolalove_59 Start: 56370, Stop: 56098, Start Num: 14

Candidate Starts for Lolalove_59:

(Start: 14 @56370 has 25 MA's), (18, 56343), (19, 56340), (23, 56301), (35, 56196), (36, 56169), (38, 56157), (40, 56139), (42, 56130),

Gene: Magpie_57 Start: 56295, Stop: 56023, Start Num: 14

Candidate Starts for Magpie_57:

(Start: 14 @56295 has 25 MA's), (18, 56268), (19, 56265), (23, 56226), (35, 56121), (36, 56094), (38, 56082), (40, 56064), (42, 56055),

Gene: Mithril_58 Start: 56502, Stop: 56230, Start Num: 14

Candidate Starts for Mithril_58:

(Start: 14 @56502 has 25 MA's), (18, 56475), (19, 56472), (23, 56433), (35, 56328), (36, 56301), (38, 56289), (40, 56271), (42, 56262),

Gene: Mudslide_58 Start: 56635, Stop: 56363, Start Num: 14

Candidate Starts for Mudslide_58:

(Start: 14 @56635 has 25 MA's), (18, 56608), (19, 56605), (23, 56566), (35, 56461), (36, 56434), (38, 56422), (40, 56404), (42, 56395), (45, 56380),

Gene: Nanao_57 Start: 55329, Stop: 55057, Start Num: 14

Candidate Starts for Nanao_57:

(Start: 14 @55329 has 25 MA's), (18, 55302), (19, 55299), (23, 55260), (35, 55155), (36, 55128), (38, 55116), (40, 55098), (42, 55089),

Gene: Poster_57 Start: 55330, Stop: 55058, Start Num: 14

Candidate Starts for Poster_57:

(Start: 14 @55330 has 25 MA's), (18, 55303), (19, 55300), (23, 55261), (35, 55156), (36, 55129), (38, 55117), (40, 55099), (42, 55090),

Gene: Prince_58 Start: 56548, Stop: 56276, Start Num: 14

Candidate Starts for Prince_58:

(Start: 14 @56548 has 25 MA's), (18, 56521), (19, 56518), (23, 56479), (35, 56374), (36, 56347), (38, 56335), (40, 56317), (42, 56308), (45, 56293),

Gene: QueenPie_56 Start: 56063, Stop: 55791, Start Num: 14

Candidate Starts for QueenPie_56:

(Start: 14 @56063 has 25 MA's), (18, 56036), (23, 55994), (35, 55889), (36, 55862), (38, 55850), (40, 55832), (42, 55823),

Gene: RawrgerThat_59 Start: 56388, Stop: 56116, Start Num: 14

Candidate Starts for RawrgerThat_59:

(Start: 14 @56388 has 25 MA's), (18, 56361), (19, 56358), (23, 56319), (35, 56214), (36, 56187), (38, 56175), (40, 56157), (42, 56148),

Gene: Renkei_57 Start: 55343, Stop: 55071, Start Num: 14

Candidate Starts for Renkei_57:

(Start: 14 @55343 has 25 MA's), (18, 55316), (19, 55313), (23, 55274), (35, 55169), (36, 55142), (38, 55130), (40, 55112),

Gene: Reynauld_94 Start: 73444, Stop: 73127, Start Num: 9

Candidate Starts for Reynauld_94:

(8, 73450), (Start: 9 @73444 has 1 MA's), (17, 73369), (20, 73351), (25, 73294), (30, 73270), (37, 73177), (40, 73156), (44, 73138),

Gene: Srilaccoli3_89 Start: 72471, Stop: 72175, Start Num: 13

Candidate Starts for Srilaccoli3_89:

(2, 72645), (3, 72606), (12, 72474), (13, 72471), (15, 72444), (16, 72435), (22, 72393), (23, 72378), (27, 72342), (37, 72225), (40, 72204), (44, 72186),

Gene: Stinger_59 Start: 55258, Stop: 54989, Start Num: 14

Candidate Starts for Stinger_59:

(Start: 14 @55258 has 25 MA's), (18, 55231), (23, 55189), (28, 55144), (33, 55099), (35, 55075), (36, 55048), (38, 55036), (43, 55003),

Gene: Thonko_64 Start: 54627, Stop: 54205, Start Num: 6

Candidate Starts for Thonko_64:

(1, 54750), (4, 54678), (Start: 6 @54627 has 1 MA's), (11, 54588), (17, 54522), (19, 54516), (31, 54414), (35, 54357), (46, 54228),

Gene: VioletZ_60 Start: 56461, Stop: 56189, Start Num: 14

Candidate Starts for VioletZ_60:

(Start: 14 @56461 has 25 MA's), (18, 56434), (19, 56431), (23, 56392), (35, 56287), (36, 56260), (38, 56248), (40, 56230), (42, 56221),

Gene: Waleliano_58 Start: 56402, Stop: 56130, Start Num: 14

Candidate Starts for Waleliano_58:

(Start: 14 @56402 has 25 MA's), (18, 56375), (19, 56372), (23, 56333), (35, 56228), (36, 56201), (38, 56189), (40, 56171), (42, 56162),

Gene: Xincheng_59 Start: 57567, Stop: 57295, Start Num: 14

Candidate Starts for Xincheng_59:

(Start: 14 @57567 has 25 MA's), (18, 57540), (23, 57498), (35, 57393), (36, 57366), (38, 57354), (42, 57327),

Gene: Zemanar_59 Start: 56234, Stop: 55962, Start Num: 14

Candidate Starts for Zemanar_59:

(Start: 14 @56234 has 25 MA's), (18, 56207), (19, 56204), (23, 56165), (35, 56060), (36, 56033), (38, 56021), (40, 56003), (42, 55994),