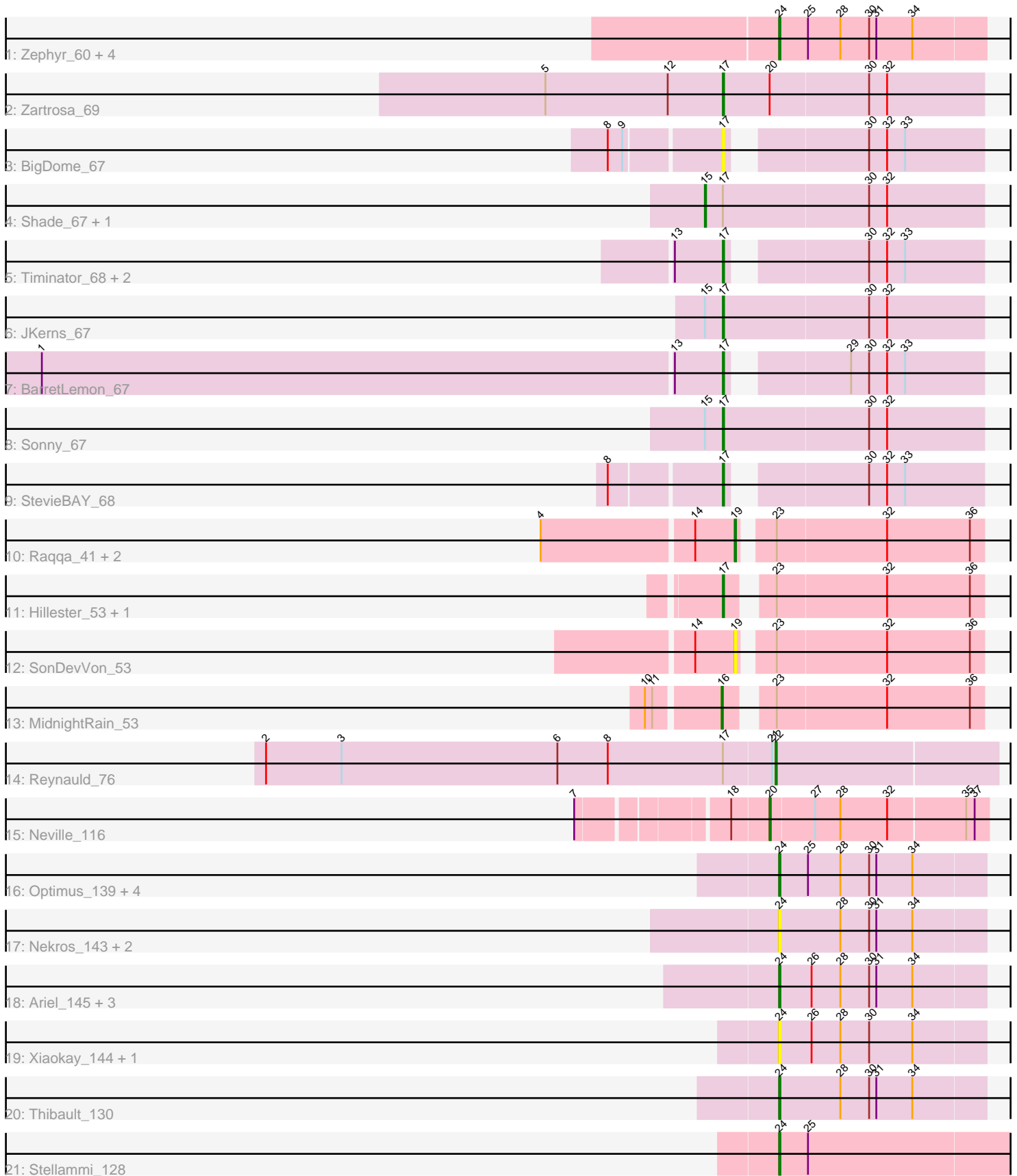


Pham 308861



Note: Tracks are now grouped by subcluster and scaled. Switching in subcluster is indicated by changes in track color. Track scale is now set by default to display the region 30 bp upstream of start 1 to 30 bp downstream of the last possible start. If this default region is judged to be packed too tightly with annotated starts, the track will be further scaled to only show that region of the ORF with annotated starts. This action will be indicated by adding "Zoomed" to the title. For starts, yellow indicates the location of called starts comprised solely of Glimmer/GeneMark auto-annotations, green indicates the location of called starts with at least 1 manual gene annotation.

Pham 308861 Report

This analysis was run 06/27/26 on database version 652.

Pham number 308861 has 41 members, 9 are drafts.

Phages represented in each track:

- Track 1 : Zephyr_60, Sibs6_61, MPlant7149_58, PinkPlastic_59, Magnito_58
- Track 2 : Zartrosa_69
- Track 3 : BigDome_67
- Track 4 : Shade_67, Jordan_68
- Track 5 : Timinator_68, LeeroyJ_68, GravityBall_67
- Track 6 : JKerns_67
- Track 7 : BarretLemon_67
- Track 8 : Sonny_67
- Track 9 : StevieBAY_68
- Track 10 : Raqqa_41, Windest_51, MUWow_49
- Track 11 : Hillester_53, RadFad_53
- Track 12 : SonDevVon_53
- Track 13 : MidnightRain_53
- Track 14 : Reynauld_76
- Track 15 : Neville_116
- Track 16 : Optimus_139, BAKA_148, Bagrid_149, Duke13_144, EricMillard_140
- Track 17 : Nekros_143, Gonephishing_139, Rearden_144
- Track 18 : Ariel_145, Courthouse_141, Hannaconda_139, Superphikiman_143
- Track 19 : Xiaokay_144, Hidrated_134
- Track 20 : Thibault_130
- Track 21 : Stellammi_128

Summary of Final Annotations (See graph section above for start numbers):

The start number called the most often in the published annotations is 24, it was called in 15 of the 32 non-draft genes in the pham.

Genes that call this "Most Annotated" start:

- Ariel_145, BAKA_148, Bagrid_149, Courthouse_141, Duke13_144, EricMillard_140, Gonephishing_139, Hannaconda_139, Hidrated_134, MPlant7149_58, Magnito_58, Nekros_143, Optimus_139, PinkPlastic_59, Rearden_144, Sibs6_61, Stellammi_128, Superphikiman_143, Thibault_130, Xiaokay_144, Zephyr_60,

Genes that have the "Most Annotated" start but do not call it:

•

Genes that do not have the "Most Annotated" start:

• BarretLemon_67, BigDome_67, GravityBall_67, Hillester_53, JKerns_67, Jordan_68, LeeroyJ_68, MUWow_49, MidnightRain_53, Neville_116, RadFad_53, Raqqa_41, Reynauld_76, Shade_67, SonDevVon_53, Sonny_67, StevieBAY_68, Timinator_68, Windest_51, Zartrosa_69,

Summary by start number:

Start 15:

- Found in 4 of 41 (9.8%) of genes in pham
- Manual Annotations of this start: 2 of 32
- Called 50.0% of time when present
- Phage (with cluster) where this start called: Jordan_68 (AO2), Shade_67 (AO2),

Start 16:

- Found in 1 of 41 (2.4%) of genes in pham
- Manual Annotations of this start: 1 of 32
- Called 100.0% of time when present
- Phage (with cluster) where this start called: MidnightRain_53 (AY),

Start 17:

- Found in 14 of 41 (34.1%) of genes in pham
- Manual Annotations of this start: 10 of 32
- Called 78.6% of time when present
- Phage (with cluster) where this start called: BarretLemon_67 (AO2), BigDome_67 (AO2), GravityBall_67 (AO2), Hillester_53 (AY), JKerns_67 (AO2), LeeroyJ_68 (AO2), RadFad_53 (AY), Sonny_67 (AO2), StevieBAY_68 (AO2), Timinator_68 (AO2), Zartrosa_69 (AO2),

Start 19:

- Found in 4 of 41 (9.8%) of genes in pham
- Manual Annotations of this start: 2 of 32
- Called 100.0% of time when present
- Phage (with cluster) where this start called: MUWow_49 (AY), Raqqa_41 (AY), SonDevVon_53 (AY), Windest_51 (AY),

Start 20:

- Found in 2 of 41 (4.9%) of genes in pham
- Manual Annotations of this start: 1 of 32
- Called 50.0% of time when present
- Phage (with cluster) where this start called: Neville_116 (DU2),

Start 22:

- Found in 1 of 41 (2.4%) of genes in pham
- Manual Annotations of this start: 1 of 32
- Called 100.0% of time when present
- Phage (with cluster) where this start called: Reynauld_76 (CH),

Start 24:

- Found in 21 of 41 (51.2%) of genes in pham
- Manual Annotations of this start: 15 of 32

- Called 100.0% of time when present
- Phage (with cluster) where this start called: Ariel_145 (J), BAKA_148 (J), Bagrid_149 (J), Courthouse_141 (J), Duke13_144 (J), EricMillard_140 (J), Gonephishing_139 (J), Hannaconda_139 (J), Hidrated_134 (J), MPlant7149_58 (A1), Magnito_58 (A1), Nekros_143 (J), Optimus_139 (J), PinkPlastic_59 (A1), Rearden_144 (J), Sibs6_61 (A1), Stellammi_128 (UNK), Superphikiman_143 (J), Thibault_130 (J), Xiaokay_144 (J), Zephyr_60 (A1),

Summary by clusters:

There are 7 clusters represented in this pham: CH, J, A1, AO2, AY, DU2, UNK,

Info for manual annotations of cluster A1:

- Start number 24 was manually annotated 5 times for cluster A1.

Info for manual annotations of cluster AO2:

- Start number 15 was manually annotated 2 times for cluster AO2.
- Start number 17 was manually annotated 8 times for cluster AO2.

Info for manual annotations of cluster AY:

- Start number 16 was manually annotated 1 time for cluster AY.
- Start number 17 was manually annotated 2 times for cluster AY.
- Start number 19 was manually annotated 2 times for cluster AY.

Info for manual annotations of cluster CH:

- Start number 22 was manually annotated 1 time for cluster CH.

Info for manual annotations of cluster DU2:

- Start number 20 was manually annotated 1 time for cluster DU2.

Info for manual annotations of cluster J:

- Start number 24 was manually annotated 9 times for cluster J.

Info for manual annotations of cluster UNK:

- Start number 24 was manually annotated 1 time for cluster UNK.

Gene Information:

Gene: Ariel_145 Start: 73854, Stop: 74024, Start Num: 24

Candidate Starts for Ariel_145:

(Start: 24 @73854 has 15 MA's), (26, 73881), (28, 73905), (30, 73929), (31, 73935), (34, 73965),

Gene: BAKA_148 Start: 77184, Stop: 77354, Start Num: 24

Candidate Starts for BAKA_148:

(Start: 24 @77184 has 15 MA's), (25, 77208), (28, 77235), (30, 77259), (31, 77265), (34, 77295),

Gene: Bagrid_149 Start: 77879, Stop: 78049, Start Num: 24

Candidate Starts for Bagrid_149:

(Start: 24 @77879 has 15 MA's), (25, 77903), (28, 77930), (30, 77954), (31, 77960), (34, 77990),

Gene: BarretLemon_67 Start: 43635, Stop: 43826, Start Num: 17

Candidate Starts for BarretLemon_67:

(1, 43074), (13, 43596), (Start: 17 @43635 has 10 MA's), (29, 43716), (30, 43731), (32, 43746), (33, 43761),

Gene: BigDome_67 Start: 43919, Stop: 44110, Start Num: 17

Candidate Starts for BigDome_67:

(8, 43832), (9, 43844), (Start: 17 @43919 has 10 MA's), (30, 44015), (32, 44030), (33, 44045),

Gene: Courthouse_141 Start: 73712, Stop: 73882, Start Num: 24

Candidate Starts for Courthouse_141:

(Start: 24 @73712 has 15 MA's), (26, 73739), (28, 73763), (30, 73787), (31, 73793), (34, 73823),

Gene: Duke13_144 Start: 75469, Stop: 75639, Start Num: 24

Candidate Starts for Duke13_144:

(Start: 24 @75469 has 15 MA's), (25, 75493), (28, 75520), (30, 75544), (31, 75550), (34, 75580),

Gene: EricMillard_140 Start: 76821, Stop: 76991, Start Num: 24

Candidate Starts for EricMillard_140:

(Start: 24 @76821 has 15 MA's), (25, 76845), (28, 76872), (30, 76896), (31, 76902), (34, 76932),

Gene: Gonephishing_139 Start: 73945, Stop: 74115, Start Num: 24

Candidate Starts for Gonephishing_139:

(Start: 24 @73945 has 15 MA's), (28, 73996), (30, 74020), (31, 74026), (34, 74056),

Gene: GravityBall_67 Start: 43935, Stop: 44126, Start Num: 17

Candidate Starts for GravityBall_67:

(13, 43896), (Start: 17 @43935 has 10 MA's), (30, 44031), (32, 44046), (33, 44061),

Gene: Hannaconda_139 Start: 74461, Stop: 74631, Start Num: 24

Candidate Starts for Hannaconda_139:

(Start: 24 @74461 has 15 MA's), (26, 74488), (28, 74512), (30, 74536), (31, 74542), (34, 74572),

Gene: Hidrated_134 Start: 77064, Stop: 77234, Start Num: 24

Candidate Starts for Hidrated_134:

(Start: 24 @77064 has 15 MA's), (26, 77091), (28, 77115), (30, 77139), (34, 77175),

Gene: Hillester_53 Start: 31772, Stop: 31969, Start Num: 17

Candidate Starts for Hillester_53:

(Start: 17 @31772 has 10 MA's), (23, 31799), (32, 31889), (36, 31958),

Gene: JKerns_67 Start: 44127, Stop: 44342, Start Num: 17

Candidate Starts for JKerns_67:

(Start: 15 @44112 has 2 MA's), (Start: 17 @44127 has 10 MA's), (30, 44247), (32, 44262),

Gene: Jordan_68 Start: 44237, Stop: 44467, Start Num: 15

Candidate Starts for Jordan_68:

(Start: 15 @44237 has 2 MA's), (Start: 17 @44252 has 10 MA's), (30, 44372), (32, 44387),

Gene: LeeroyJ_68 Start: 43864, Stop: 44055, Start Num: 17

Candidate Starts for LeeroyJ_68:

(13, 43825), (Start: 17 @43864 has 10 MA's), (30, 43960), (32, 43975), (33, 43990),

Gene: MPlant7149_58 Start: 38800, Stop: 38630, Start Num: 24

Candidate Starts for MPlant7149_58:
(Start: 24 @38800 has 15 MA's), (25, 38776), (28, 38749), (30, 38725), (31, 38719), (34, 38689),

Gene: MUWow_49 Start: 30780, Stop: 30971, Start Num: 19
Candidate Starts for MUWow_49:
(4, 30624), (14, 30747), (Start: 19 @30780 has 2 MA's), (23, 30801), (32, 30891), (36, 30960),

Gene: Magnito_58 Start: 39967, Stop: 39797, Start Num: 24
Candidate Starts for Magnito_58:
(Start: 24 @39967 has 15 MA's), (25, 39943), (28, 39916), (30, 39892), (31, 39886), (34, 39856),

Gene: MidnightRain_53 Start: 31954, Stop: 32151, Start Num: 16
Candidate Starts for MidnightRain_53:
(10, 31897), (11, 31903), (Start: 16 @31954 has 1 MA's), (23, 31981), (32, 32071), (36, 32140),

Gene: Nekros_143 Start: 77051, Stop: 77221, Start Num: 24
Candidate Starts for Nekros_143:
(Start: 24 @77051 has 15 MA's), (28, 77102), (30, 77126), (31, 77132), (34, 77162),

Gene: Neville_116 Start: 66352, Stop: 66528, Start Num: 20
Candidate Starts for Neville_116:
(7, 66211), (18, 66322), (Start: 20 @66352 has 1 MA's), (27, 66388), (28, 66409), (32, 66448), (35, 66511), (37, 66517),

Gene: Optimus_139 Start: 75143, Stop: 75313, Start Num: 24
Candidate Starts for Optimus_139:
(Start: 24 @75143 has 15 MA's), (25, 75167), (28, 75194), (30, 75218), (31, 75224), (34, 75254),

Gene: PinkPlastic_59 Start: 39832, Stop: 39662, Start Num: 24
Candidate Starts for PinkPlastic_59:
(Start: 24 @39832 has 15 MA's), (25, 39808), (28, 39781), (30, 39757), (31, 39751), (34, 39721),

Gene: RadFad_53 Start: 31772, Stop: 31969, Start Num: 17
Candidate Starts for RadFad_53:
(Start: 17 @31772 has 10 MA's), (23, 31799), (32, 31889), (36, 31958),

Gene: Raqqa_41 Start: 27644, Stop: 27835, Start Num: 19
Candidate Starts for Raqqa_41:
(4, 27488), (14, 27611), (Start: 19 @27644 has 2 MA's), (23, 27665), (32, 27755), (36, 27824),

Gene: Rearden_144 Start: 76460, Stop: 76630, Start Num: 24
Candidate Starts for Rearden_144:
(Start: 24 @76460 has 15 MA's), (28, 76511), (30, 76535), (31, 76541), (34, 76571),

Gene: Reynauld_76 Start: 62933, Stop: 62751, Start Num: 22
Candidate Starts for Reynauld_76:
(2, 63356), (3, 63293), (6, 63113), (8, 63071), (Start: 17 @62975 has 10 MA's), (21, 62936), (Start: 22 @62933 has 1 MA's),

Gene: Shade_67 Start: 43875, Stop: 44105, Start Num: 15
Candidate Starts for Shade_67:
(Start: 15 @43875 has 2 MA's), (Start: 17 @43890 has 10 MA's), (30, 44010), (32, 44025),

Gene: Sibs6_61 Start: 38862, Stop: 38692, Start Num: 24
Candidate Starts for Sibs6_61:
(Start: 24 @38862 has 15 MA's), (25, 38838), (28, 38811), (30, 38787), (31, 38781), (34, 38751),

Gene: SonDevVon_53 Start: 31152, Stop: 31343, Start Num: 19
Candidate Starts for SonDevVon_53:
(14, 31119), (Start: 19 @31152 has 2 MA's), (23, 31173), (32, 31263), (36, 31332),

Gene: Sonny_67 Start: 43813, Stop: 44028, Start Num: 17
Candidate Starts for Sonny_67:
(Start: 15 @43798 has 2 MA's), (Start: 17 @43813 has 10 MA's), (30, 43933), (32, 43948),

Gene: Stellammi_128 Start: 60941, Stop: 61135, Start Num: 24
Candidate Starts for Stellammi_128:
(Start: 24 @60941 has 15 MA's), (25, 60965),

Gene: StevieBAY_68 Start: 44157, Stop: 44348, Start Num: 17
Candidate Starts for StevieBAY_68:
(8, 44070), (Start: 17 @44157 has 10 MA's), (30, 44253), (32, 44268), (33, 44283),

Gene: Superphikiman_143 Start: 73994, Stop: 74164, Start Num: 24
Candidate Starts for Superphikiman_143:
(Start: 24 @73994 has 15 MA's), (26, 74021), (28, 74045), (30, 74069), (31, 74075), (34, 74105),

Gene: Thibault_130 Start: 74570, Stop: 74740, Start Num: 24
Candidate Starts for Thibault_130:
(Start: 24 @74570 has 15 MA's), (28, 74621), (30, 74645), (31, 74651), (34, 74681),

Gene: Timinator_68 Start: 43977, Stop: 44168, Start Num: 17
Candidate Starts for Timinator_68:
(13, 43938), (Start: 17 @43977 has 10 MA's), (30, 44073), (32, 44088), (33, 44103),

Gene: Windest_51 Start: 29708, Stop: 29899, Start Num: 19
Candidate Starts for Windest_51:
(4, 29552), (14, 29675), (Start: 19 @29708 has 2 MA's), (23, 29729), (32, 29819), (36, 29888),

Gene: Xiaokay_144 Start: 78000, Stop: 78170, Start Num: 24
Candidate Starts for Xiaokay_144:
(Start: 24 @78000 has 15 MA's), (26, 78027), (28, 78051), (30, 78075), (34, 78111),

Gene: Zartrosa_69 Start: 44139, Stop: 44354, Start Num: 17
Candidate Starts for Zartrosa_69:
(5, 43992), (12, 44094), (Start: 17 @44139 has 10 MA's), (Start: 20 @44178 has 1 MA's), (30, 44259),
(32, 44274),

Gene: Zephyr_60 Start: 39858, Stop: 39688, Start Num: 24
Candidate Starts for Zephyr_60:
(Start: 24 @39858 has 15 MA's), (25, 39834), (28, 39807), (30, 39783), (31, 39777), (34, 39747),