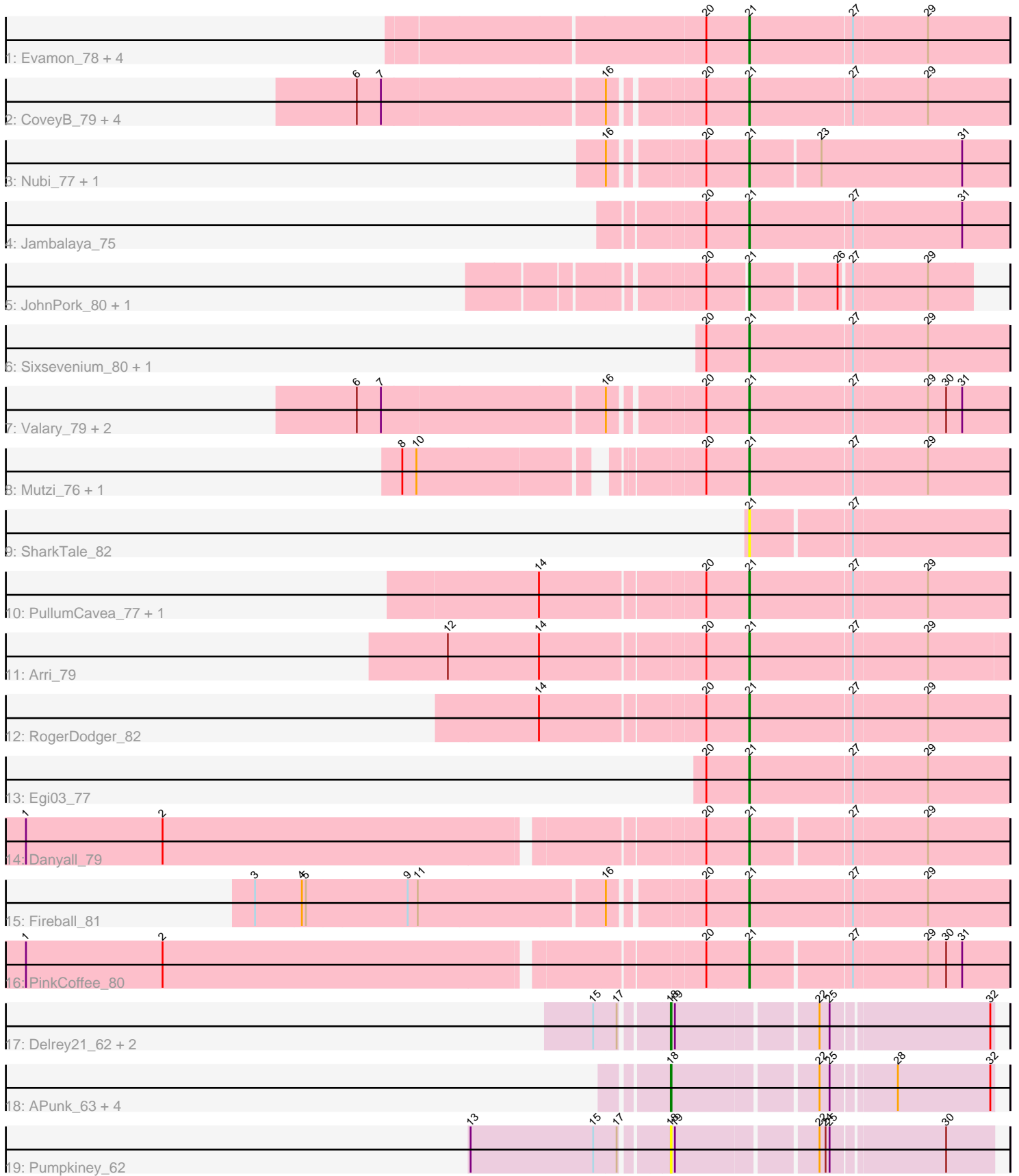


Pham 308868



Note: Tracks are now grouped by subcluster and scaled. Switching in subcluster is indicated by changes in track color. Track scale is now set by default to display the region 30 bp upstream of start 1 to 30 bp downstream of the last possible start. If this default region is judged to be packed too tightly with annotated starts, the track will be further scaled to only show that region of the ORF with annotated starts. This action will be indicated by adding "Zoomed" to the title. For starts, yellow indicates the location of called starts comprised solely of Glimmer/GeneMark auto-annotations, green indicates the location of called starts with at least 1 manual gene annotation.

Pham 308868 Report

This analysis was run 06/27/26 on database version 652.

Pham number 308868 has 40 members, 5 are drafts.

Phages represented in each track:

- Track 1 : Evamon_78, SmokingBunny_79, Salvador_78, Togo_78, Twister6_79
- Track 2 : CoveyB_79, CherryCola_78, Halo3_76, Savbucketdawg_74, Wizard_75
- Track 3 : Nubi_77, Sendy_78
- Track 4 : Jambalaya_75
- Track 5 : JohnPork_80, Portcullis_79
- Track 6 : Sixsevenium_80, Bakery_83
- Track 7 : Valary_79, Gezellig_75, KimmyK_78
- Track 8 : Mutzi_76, YungMoney_77
- Track 9 : SharkTale_82
- Track 10 : PullumCavea_77, Phlop_76
- Track 11 : Arri_79
- Track 12 : RogerDodger_82
- Track 13 : Egi03_77
- Track 14 : Danyall_79
- Track 15 : Fireball_81
- Track 16 : PinkCoffee_80
- Track 17 : Delrey21_62, Verity_62, DoctorFroggo_62
- Track 18 : APunk_63, Sampson_63, BigHunkinEater_65, ViaConlectus_62, Zipp_63
- Track 19 : Pumpkiney_62

Summary of Final Annotations (See graph section above for start numbers):

The start number called the most often in the published annotations is 21, it was called in 27 of the 35 non-draft genes in the pham.

Genes that call this "Most Annotated" start:

- Arri_79, Bakery_83, CherryCola_78, CoveyB_79, Danyall_79, Egi03_77, Evamon_78, Fireball_81, Gezellig_75, Halo3_76, Jambalaya_75, JohnPork_80, KimmyK_78, Mutzi_76, Nubi_77, Phlop_76, PinkCoffee_80, Portcullis_79, PullumCavea_77, RogerDodger_82, Salvador_78, Savbucketdawg_74, Sendy_78, SharkTale_82, Sixsevenium_80, SmokingBunny_79, Togo_78, Twister6_79, Valary_79, Wizard_75, YungMoney_77,

Genes that have the "Most Annotated" start but do not call it:

-

Genes that do not have the "Most Annotated" start:

- APunk_63, BigHunkinEater_65, Delrey21_62, DoctorFroggo_62, Pumpkiney_62, Sampson_63, Verity_62, ViaConlectus_62, Zipp_63,

Summary by start number:

Start 18:

- Found in 9 of 40 (22.5%) of genes in pham
- Manual Annotations of this start: 8 of 35
- Called 100.0% of time when present
- Phage (with cluster) where this start called: APunk_63 (DE4), BigHunkinEater_65 (DE4), Delrey21_62 (DE4), DoctorFroggo_62 (DE4), Pumpkiney_62 (DE4), Sampson_63 (DE4), Verity_62 (DE4), ViaConlectus_62 (DE4), Zipp_63 (DE4),

Start 21:

- Found in 31 of 40 (77.5%) of genes in pham
- Manual Annotations of this start: 27 of 35
- Called 100.0% of time when present
- Phage (with cluster) where this start called: Arri_79 (DC1), Bakery_83 (DC1), CherryCola_78 (DC1), CoveyB_79 (DC1), Danyall_79 (DC1), Egi03_77 (DC1), Evamon_78 (DC1), Fireball_81 (DC1), Gezellig_75 (DC1), Halo3_76 (DC1), Jambalaya_75 (DC1), JohnPork_80 (DC1), KimmyK_78 (DC1), Mutzi_76 (DC1), Nubi_77 (DC1), Phlop_76 (DC1), PinkCoffee_80 (DC1), Portcullis_79 (DC1), PullumCavea_77 (DC1), RogerDodger_82 (DC1), Salvador_78 (DC1), Savbucketdawg_74 (DC1), Sendy_78 (DC1), SharkTale_82 (DC1), Sixsevenium_80 (DC1), SmokingBunny_79 (DC1), Togo_78 (DC1), Twister6_79 (DC1), Valary_79 (DC1), Wizard_75 (DC1), YungMoney_77 (DC1),

Summary by clusters:

There are 2 clusters represented in this pham: DE4, DC1,

Info for manual annotations of cluster DC1:

- Start number 21 was manually annotated 27 times for cluster DC1.

Info for manual annotations of cluster DE4:

- Start number 18 was manually annotated 8 times for cluster DE4.

Gene Information:

Gene: APunk_63 Start: 48279, Stop: 48725, Start Num: 18

Candidate Starts for APunk_63:

(Start: 18 @48279 has 8 MA's), (22, 48480), (25, 48495), (28, 48582), (32, 48720),

Gene: Arri_79 Start: 52547, Stop: 52924, Start Num: 21

Candidate Starts for Arri_79:

(12, 52118), (14, 52253), (20, 52484), (Start: 21 @52547 has 27 MA's), (27, 52697), (29, 52805),

Gene: Bakery_83 Start: 54647, Stop: 55024, Start Num: 21

Candidate Starts for Bakery_83:
(20, 54584), (Start: 21 @54647 has 27 MA's), (27, 54797), (29, 54905),

Gene: BigHunkinEater_65 Start: 47994, Stop: 48440, Start Num: 18
Candidate Starts for BigHunkinEater_65:
(Start: 18 @47994 has 8 MA's), (22, 48195), (25, 48210), (28, 48297), (32, 48435),

Gene: CherryCola_78 Start: 52895, Stop: 53272, Start Num: 21
Candidate Starts for CherryCola_78:
(6, 52352), (7, 52388), (16, 52709), (20, 52832), (Start: 21 @52895 has 27 MA's), (27, 53045), (29, 53153),

Gene: CoveyB_79 Start: 52387, Stop: 52764, Start Num: 21
Candidate Starts for CoveyB_79:
(6, 51844), (7, 51880), (16, 52201), (20, 52324), (Start: 21 @52387 has 27 MA's), (27, 52537), (29, 52645),

Gene: Danyall_79 Start: 52090, Stop: 52458, Start Num: 21
Candidate Starts for Danyall_79:
(1, 51058), (2, 51262), (20, 52027), (Start: 21 @52090 has 27 MA's), (27, 52231), (29, 52339),

Gene: Delrey21_62 Start: 49538, Stop: 49984, Start Num: 18
Candidate Starts for Delrey21_62:
(15, 49445), (17, 49478), (Start: 18 @49538 has 8 MA's), (19, 49544), (22, 49739), (25, 49754), (32, 49979),

Gene: DoctorFroggo_62 Start: 49538, Stop: 49984, Start Num: 18
Candidate Starts for DoctorFroggo_62:
(15, 49445), (17, 49478), (Start: 18 @49538 has 8 MA's), (19, 49544), (22, 49739), (25, 49754), (32, 49979),

Gene: Egi03_77 Start: 51947, Stop: 52324, Start Num: 21
Candidate Starts for Egi03_77:
(20, 51884), (Start: 21 @51947 has 27 MA's), (27, 52097), (29, 52205),

Gene: Evamon_78 Start: 52312, Stop: 52689, Start Num: 21
Candidate Starts for Evamon_78:
(20, 52249), (Start: 21 @52312 has 27 MA's), (27, 52462), (29, 52570),

Gene: Fireball_81 Start: 52875, Stop: 53255, Start Num: 21
Candidate Starts for Fireball_81:
(3, 52179), (4, 52248), (5, 52254), (9, 52404), (11, 52419), (16, 52689), (20, 52812), (Start: 21 @52875 has 27 MA's), (27, 53025), (29, 53133),

Gene: Gezellig_75 Start: 52140, Stop: 52517, Start Num: 21
Candidate Starts for Gezellig_75:
(6, 51597), (7, 51633), (16, 51954), (20, 52077), (Start: 21 @52140 has 27 MA's), (27, 52290), (29, 52398), (30, 52425), (31, 52449),

Gene: Halo3_76 Start: 52725, Stop: 53102, Start Num: 21
Candidate Starts for Halo3_76:
(6, 52182), (7, 52218), (16, 52539), (20, 52662), (Start: 21 @52725 has 27 MA's), (27, 52875), (29, 52983),

Gene: Jambalaya_75 Start: 51368, Stop: 51745, Start Num: 21
Candidate Starts for Jambalaya_75:
(20, 51305), (Start: 21 @51368 has 27 MA's), (27, 51518), (31, 51677),

Gene: JohnPork_80 Start: 52265, Stop: 52576, Start Num: 21
Candidate Starts for JohnPork_80:
(20, 52208), (Start: 21 @52265 has 27 MA's), (26, 52388), (27, 52403), (29, 52511),

Gene: KimmyK_78 Start: 52587, Stop: 52964, Start Num: 21
Candidate Starts for KimmyK_78:
(6, 52044), (7, 52080), (16, 52401), (20, 52524), (Start: 21 @52587 has 27 MA's), (27, 52737), (29, 52845), (30, 52872), (31, 52896),

Gene: Mutzi_76 Start: 52845, Stop: 53222, Start Num: 21
Candidate Starts for Mutzi_76:
(8, 52392), (10, 52413), (20, 52782), (Start: 21 @52845 has 27 MA's), (27, 52995), (29, 53103),

Gene: Nubi_77 Start: 51637, Stop: 52017, Start Num: 21
Candidate Starts for Nubi_77:
(16, 51451), (20, 51574), (Start: 21 @51637 has 27 MA's), (23, 51736), (31, 51946),

Gene: Phlop_76 Start: 52190, Stop: 52567, Start Num: 21
Candidate Starts for Phlop_76:
(14, 51896), (20, 52127), (Start: 21 @52190 has 27 MA's), (27, 52340), (29, 52448),

Gene: PinkCoffee_80 Start: 52131, Stop: 52499, Start Num: 21
Candidate Starts for PinkCoffee_80:
(1, 51099), (2, 51303), (20, 52068), (Start: 21 @52131 has 27 MA's), (27, 52272), (29, 52380), (30, 52407), (31, 52431),

Gene: Portcullis_79 Start: 52265, Stop: 52576, Start Num: 21
Candidate Starts for Portcullis_79:
(20, 52208), (Start: 21 @52265 has 27 MA's), (26, 52388), (27, 52403), (29, 52511),

Gene: PullumCavea_77 Start: 52367, Stop: 52744, Start Num: 21
Candidate Starts for PullumCavea_77:
(14, 52073), (20, 52304), (Start: 21 @52367 has 27 MA's), (27, 52517), (29, 52625),

Gene: Pumpkiney_62 Start: 46582, Stop: 47028, Start Num: 18
Candidate Starts for Pumpkiney_62:
(13, 46306), (15, 46489), (17, 46522), (Start: 18 @46582 has 8 MA's), (19, 46588), (22, 46783), (24, 46792), (25, 46798), (30, 46957),

Gene: RogerDodger_82 Start: 52955, Stop: 53332, Start Num: 21
Candidate Starts for RogerDodger_82:
(14, 52661), (20, 52892), (Start: 21 @52955 has 27 MA's), (27, 53105), (29, 53213),

Gene: Salvador_78 Start: 52310, Stop: 52687, Start Num: 21
Candidate Starts for Salvador_78:
(20, 52247), (Start: 21 @52310 has 27 MA's), (27, 52460), (29, 52568),

Gene: Sampson_63 Start: 48591, Stop: 49037, Start Num: 18

Candidate Starts for Sampson_63:

(Start: 18 @48591 has 8 MA's), (22, 48792), (25, 48807), (28, 48894), (32, 49032),

Gene: Savbucketdawg_74 Start: 51702, Stop: 52079, Start Num: 21

Candidate Starts for Savbucketdawg_74:

(6, 51159), (7, 51195), (16, 51516), (20, 51639), (Start: 21 @51702 has 27 MA's), (27, 51852), (29, 51960),

Gene: Sendy_78 Start: 51838, Stop: 52218, Start Num: 21

Candidate Starts for Sendy_78:

(16, 51652), (20, 51775), (Start: 21 @51838 has 27 MA's), (23, 51937), (31, 52147),

Gene: SharkTale_82 Start: 54567, Stop: 54935, Start Num: 21

Candidate Starts for SharkTale_82:

(Start: 21 @54567 has 27 MA's), (27, 54708),

Gene: Sixsevenium_80 Start: 53628, Stop: 54005, Start Num: 21

Candidate Starts for Sixsevenium_80:

(20, 53565), (Start: 21 @53628 has 27 MA's), (27, 53778), (29, 53886),

Gene: SmokingBunny_79 Start: 53306, Stop: 53683, Start Num: 21

Candidate Starts for SmokingBunny_79:

(20, 53243), (Start: 21 @53306 has 27 MA's), (27, 53456), (29, 53564),

Gene: Togo_78 Start: 53306, Stop: 53683, Start Num: 21

Candidate Starts for Togo_78:

(20, 53243), (Start: 21 @53306 has 27 MA's), (27, 53456), (29, 53564),

Gene: Twister6_79 Start: 51655, Stop: 52032, Start Num: 21

Candidate Starts for Twister6_79:

(20, 51592), (Start: 21 @51655 has 27 MA's), (27, 51805), (29, 51913),

Gene: Valary_79 Start: 52962, Stop: 53339, Start Num: 21

Candidate Starts for Valary_79:

(6, 52419), (7, 52455), (16, 52776), (20, 52899), (Start: 21 @52962 has 27 MA's), (27, 53112), (29, 53220), (30, 53247), (31, 53271),

Gene: Verity_62 Start: 49538, Stop: 49984, Start Num: 18

Candidate Starts for Verity_62:

(15, 49445), (17, 49478), (Start: 18 @49538 has 8 MA's), (19, 49544), (22, 49739), (25, 49754), (32, 49979),

Gene: ViaConlectus_62 Start: 47422, Stop: 47868, Start Num: 18

Candidate Starts for ViaConlectus_62:

(Start: 18 @47422 has 8 MA's), (22, 47623), (25, 47638), (28, 47725), (32, 47863),

Gene: Wizard_75 Start: 52140, Stop: 52517, Start Num: 21

Candidate Starts for Wizard_75:

(6, 51597), (7, 51633), (16, 51954), (20, 52077), (Start: 21 @52140 has 27 MA's), (27, 52290), (29, 52398),

Gene: YungMoney_77 Start: 53685, Stop: 54062, Start Num: 21

Candidate Starts for YungMoney_77:

(8, 53232), (10, 53253), (20, 53622), (Start: 21 @53685 has 27 MA's), (27, 53835), (29, 53943),

Gene: Zipp_63 Start: 49420, Stop: 49866, Start Num: 18

Candidate Starts for Zipp_63:

(Start: 18 @49420 has 8 MA's), (22, 49621), (25, 49636), (28, 49723), (32, 49861),